

# Deer Management Zone

## BOUNDARY DESCRIPTIONS



**Zone 1:** That portion of Sussex County lying within a continuous line beginning at the intersection of Rt. 521 (River Rd.) and Mashipacong Rd.; then west along the northern boundary of the Delaware Water Gap National Recreation Area to the east bank of the Delaware River; then north along the east bank of the Delaware River to the New York state line; then east along the state line to Rt. 519; then south along Rt. 519 to its intersection with Rt. 206 at Branchville; then northwest along Rt. 206 to the intersection with Rt. 633; then south along Rt. 633 to its intersection with Rt. 521; then northwest along Rt. 521 to its intersection with Rt. 206; then northwest on Rt. 521/Rt. 206 to its intersection with Rt. 560; then west along Rt. 560 to the intersection with Ridge Rd.; then north on Ridge Rd. to the intersection with Rt. 646; then east on Rt. 646 to the intersection with Rt. 645 in Hainesville; then north on Rt. 645 to the intersection with Rts. 206 and 521; then north on Rts. 206 and 521 to Montague; then north on Rt. 521 (River Rd.) to the intersection with Mashipacong Rd., the point of beginning. The island of Mashipacong lying in the Delaware River is included in this zone. High Point State Park (Zone 67) is excluded from Zone 1.

**Zone 2:** That portion of Sussex County lying within a continuous line beginning at the intersection of Rt. 94 and the New York state line; then south along Rt. 94 to its intersection with Rt. 23 at Hamburg; then southeast along Rt. 23 to its intersection with Rt. 517 at Franklin; then south along Rt. 517 to its intersection with Rt. 206 at Andover; then north along Rt. 206 to its intersection with Rt. 519 at Newton; then north along Rt. 519 to the New York state line; then east along the New York state line to Rt. 94 to the point of beginning.

**Zone 3:** That portion of Sussex, Morris, Passaic, and Bergen counties lying within a continuous line beginning at the intersection of Rt. 94 and the New York state line; then east along the New York state line to its intersection with Rt. 202 near Suffern; then south along Rt. 202 to its intersection with Rt. 287 in Oakland; then south on Rt. 287 to its intersection with Rt. 23 in Riverdale; then west along Rt. 23 to its intersection with Rt. 94 at Hamburg; then north along Rt. 94 to the point of beginning on the New York state line.

**Zone 4:** That portion of Sussex and Warren counties lying within a continuous line beginning at the intersection of Rt. 521 (River Rd.) and New Mashipacong Rd.; then running along Rt. 521 to the intersection with Rt. 206 in Montague; then south on Rt. 206 to the intersection with Rt. 645 (Layton-Hainesville Rd.); then south on Rt. 645 to the intersection with Rt. 646 in Hainesville (Jagger Rd.); then west on Rt. 646 to the intersection with Ridge Rd.; then south on Ridge Rd. to the intersection with Rt. 560 (Dingman's Bridge Rd.); then southeast along Rt. 560 to its intersection with Rt. 206; then south on Rt. 206 to its intersection with Rt. 521; then south along Rt. 521 to its intersection with Beavans Rd. at the Hampton Twp. – Frankford Twp. border; then northwest along Beavans Rd. to its intersection with the base of the Kittatinny Ridge then southwest along the east base of the Kittatinny Ridge to the Delaware River at the Delaware Water Gap north and west of Quarry Rd.; then north along the east bank of the Delaware River to the northern park boundary of the Delaware Water Gap National Recreation Area; then east along the northern park boundary of the Delaware Water Gap National Recreation Area to Rt. 521 (River Rd.), the point of beginning. Namanock, Minisink, Depew, Tocks, Poxono and Labar Islands in the Delaware River are included in this zone.

**Zone 5:** That portion of Warren and Sussex counties lying within a continuous line beginning at the intersection of Rt. 521 and Beavans Rd. at the Hampton Township – Frankford Township border; then

southeast on Rt. 521 to its intersection with Rt. 633; then north on Rt. 633 to its intersection with Rt. 206 in Branchville; then southeast along Rt. 206 to its intersection with Rt. 519 at Branchville; then south along Rt. 519 to its intersection with Rt. 206 at Newton; then south along Rt. 206 to its intersection with Rt. 517 at Andover; then south along Rt. 517 to its intersection with Rt. 46 at Hackettstown; then west along Rt. 46 to its intersection with the Delaware River at Manunkachunk; then north along the east bank of the Delaware River to its intersection with the Zone 4 boundary at the Delaware Water Gap north and west of Quarry Rd.; then northeast along the base of the Kittatinny Ridge to its intersection with Beavans Rd. at the Hampton Twp. – Frankford Twp. border; then southeast along Beavans Rd. to its intersection with Rt. 521 at the point of beginning.

**Zone 6:** That portion of Morris, Sussex, Passaic, Warren and Essex counties lying within a continuous line beginning at the intersection of Rt. 80 and Rt. 517 at Allamuchy; then northeast along Rt. 517 to its intersection with Rt. 23 at Franklin; then southeast along Rt. 23 to its intersection with Rt. 618; then south along Rt. 618 to its intersection with Rockaway Valley Rd.; then southwest along Rockaway Valley Rd. to its intersection with Diamond Spring Rd.; then south along Diamond Spring Rd. with West Main St. in Denville; then south along West Main St. to its intersection with Rt. 80; then west along Rt. 80 to the point of

(continued on page 38)



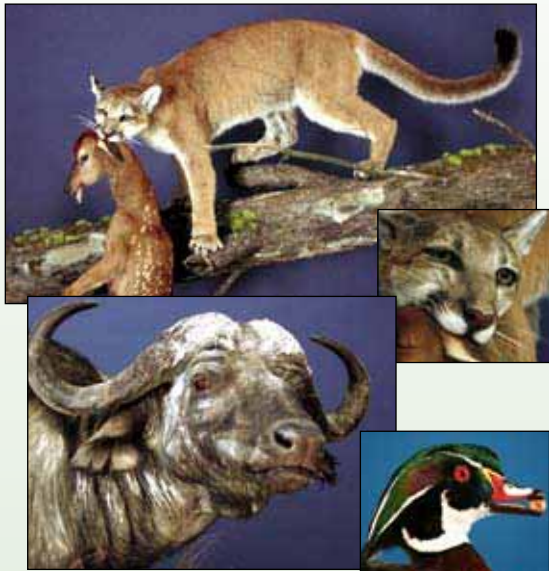
## Be Sure of Your Target and Beyond

Be aware of all SAFETY ZONES.

VIOLATION	FIRST OFFENSE	REPEAT OFFENSES
Deer Permit Violations (Hunting without permit, wrong season, wrong zone, permit transfer)	\$100 to \$300 fine	\$300 to \$500 fine Two convictions within five years and two-year loss of license
Hunting within 450 ft. of a school playground or building	\$100 to \$300 fine	\$300 to \$1,500 fine and permanent loss of license
Negligent use of a weapon (Did cause injury or death of another person)	\$500 to \$2,000 fine and five year loss of license	\$1000 to \$4,000 fine and permanent loss of license
Damage or injury to real or personal property of another	Up to \$2,000 fine and five-year loss of license plus restitution for damages	Up to \$2,000 fine and permanent loss of license plus restitution for damages
Careless use of a weapon (shooting into safety zone, handling weapon in unsafe manner)	\$100 to \$500 fine and two-year loss of license	\$100 to \$500 fine and two-year loss of license.
Trespass	\$100 to \$200 fine	\$200 to \$500 fine and five-year loss of license

# W I L D L I F E P R E S E R V A T I O N S T A X I D E R M Y

Trusted by Major Museums  
Around the World



*"We've mastered the  
unique, and specialize in  
the impossible!"*

ARTISTIC composition & design

EXCEPTIONAL accuracy & detail

CUSTOM sculpture

NJ'S ONLY NATIONAL AWARD OF  
EXCELLENCE WINNER.

NJ'S ONLY NTA CERTIFIED JUDGE.

NJ'S ONLY STUDIO OF ARTISANS  
accredited with over 400 awards from  
regional to world competitions.



Come visit us at the new, 4000 sq.ft.,  
state of the art facility.

**George A. Dante, Jr.**

WILDLIFE PRESERVATIONS, LLC  
192 LACKAWANNA AVENUE, UNIT 104  
WEST PATERSON, NJ 07424

Phone: **973-890-1516**



Where Sportsmen begin their hunt!

At Tip's, your every need is taken care of by a professional staff with personal, expert service. You'll find a complete archery proshop equipped with laser tuning and custom arrows, a large selection of guns, marine supplies and a line of clothing to outfit you for every season.

NJ Deer and Turkey Check Station



Tip's  
Hardware  
features  
these  
and other  
respected  
brands:

EXCALIBUR

Hoyt USA

Mathews

DIAMOND

Carhartt

STEINER

ROCKY

Benelli

Remington

WINCHESTER

KNIGHT

KENT

Huge line of archery supplies  
FREE Set-up on all new bows

New and Used Guns  
FREE bore sighting with the  
purchase of a new gun and scope

218 Main St (Rt. 9)

West Creek, NJ 08092

**(609)296-3192**

Mon-Sat 8am-5:30pm Sun 8am-3:30pm

**www.tipshardware.net**

Tip's Exclusive Coupon • Valid until 12/31/08

**20% All Archery  
OFF Accessories**

Not valid with any  
other offers or promotions

2008 NJ Hunting Regulations

# Deer Management Zone

## BOUNDARY DESCRIPTIONS

(continued from page 36)

beginning at Allamuchy. Picatinny Arsenal (Zone 54) is excluded from Zone 6.

**Zone 7:** That portion of Hunterdon and Warren counties lying within a continuous line beginning at the intersection of Rts. 31 and 78 at Clinton; then north along Rt. 31 to its intersection with Rt. 46 at Buttsville; then west on Rt. 46 to the Delaware River at Manunkachunk; then south along the east bank of the Delaware to its intersection with Rt. 78 at Phillipsburg; then east along Rt. 78 to the point of beginning at Clinton.

**Zone 8:** That portion of Hunterdon, Morris, Somerset and Warren counties lying within a continuous line beginning at the intersection of Rts. 22 and 206 near Somerville; then north along Rt. 206 to its intersection with Rt. 80 near Netcong; then west along Rt. 80 to its intersection with Rt. 517 at Allamuchy; then south along Rt. 517 to its intersection with Rt. 46 at Hackettstown; then west along Rt. 46 to its intersection with Rt. 31 at Buttsville; then southeast along Rt. 31 to its intersection with Rt. 22 at Clinton; then east along Rt. 22 to the point of beginning at Somerville.

**Zone 9:** Those portions of Morris and Somerset counties lying within a continuous line beginning at the intersection of Rt. 206 and Rt. 80 near Netcong; then east along Rt. 80 to its intersection with Rt. 46; then east on Rt. 46 to the intersection with Rt. 10 in Ledgewood; then east on Rt. 10 to the intersection with Morris Tpk.; then east and south on Morris Tpk. to Calais Rd.; then west on Calais Rd. to Combs Hollow Rd.; then south on Combs Hollow Rd. to Calais Rd.; then south on Calais Rd. to Mountain Ave. in Mendham; then south and east on Mountain Ave. to Hilltop Rd. (Rt. 525); then south on Rt. 525 to the intersection with Rt. 78; then west on Rt. 78 to the intersection with Rt. 206 near Pluckemin; then north on Rt. 206 to the intersection with Rt. 80 in Netcong, the point of beginning.

**Zone 10:** That portion of Hunterdon and Warren counties lying within a continuous line beginning at the intersection of Rts. 31 and 12 in Flemington; then north along Rt. 31 to its intersection with Rt. 78 at

Clinton; then west along Rt. 78 to the Delaware River at Phillipsburg; then south along the east bank of the Delaware River to Rt. 12 at Frenchtown; then east along Rt. 12 to the point of beginning at Flemington.

**Zone 11:** That portion of Hunterdon County lying within a continuous line beginning at the intersection of Routes 12 and 31 and 202 at Flemington; then southwest along Route 202 to the Delaware River; then northwest along the east bank of the Delaware River to its intersection with Route 12 at Frenchtown; then east along Route 12 to the point of beginning at Flemington. Shyhawks, Treasure, Rush, Bull and Eagle Islands lying in the Delaware River are in this zone.

**Zone 12:** That portion of Somerset, Hunterdon and Mercer counties lying within a continuous line beginning at the intersection of Rts. 31 and 22 at Clinton; then east on Rt. 22 to its intersection with Rt. 206 at Somerville; then south along Rt. 206 to its intersection with Rt. 546 at Lawrenceville; then west on Rt. 546 to its intersection with Rt. 31 at the Pennington traffic circle; then north along Rt. 31 to the point of beginning at Clinton. That portion of Round Valley Recreation Area designated as open to deer hunting is included in Zone 12.

**Zone 13:** That portion of Morris, Somerset and Union counties lying within a continuous line beginning at the intersection of Rts. 22 and 206 at Somerville; then north on Rt. 206 to the intersection with Rt. 78 near Pluckemin; then east on Rt. 78 to the intersection with Rt. 525; then north on Rt. 525 to Mountain Ave. in Mendham; then north and west on Mountain Ave. to Calais Rd.; then north on Calais Rd. to Combs Hollow Rd., then north on Combs Hollow Rd. to Calais Rd.; then east on Calais Rd. to Morris Tpk.; then north and west on Morris Tpk. to Rt. 10; then west on Rt. 10 to Rt. 46 in Ledgewood; then west on Rt. 46 to the intersection with Rt. 80 near Netcong; then east on Rt. 80 to the intersection with Rt. 511; then south on Rt. 511 to the intersection with Rt. 124 in Morristown; then southeast along Rt. 124 to the intersection with Rt. 82; then southwest along Rt. 82 to the intersection with Rt. 22; then southwest along Rt. 22 to the point of beginning at Somerville. The Great Swamp National Wildlife Refuge (Zone 38) is excluded from Zone 13.

**Zone 14:** That portion of Mercer, Middlesex, Somerset and Burlington counties lying within a continuous line beginning at the intersection of Routes 22 and 206 at Somerville, then east along Route 22 to its intersection with Interstate 287; then south on Interstate 287 to its intersection with Route 18; then south on Route 18 to its intersection with the New Jersey Turnpike; then southwest along the New Jersey Turnpike to its intersection with Rt. 545; then northwest on Route 545 which becomes Farnsworth Ave.; then continuing northwest on Farnsworth Ave. to its intersection with W. Burlington St.; then southwest on W. Burlington St. to its intersection with Interstate 295; then north on Interstate 295 to its intersection with the Delaware River at Bordentown; then northwest along the east bank of the Delaware River to Route 546 at Washington's Crossing; then east on Route 546 to its intersection with Route 206 at Lawrenceville; then north along Route 206 to the point beginning at Somerville. Rotary and Blauguard Islands lying in the Delaware River are in this zone.

**Zone 15:** That portion of Monmouth, Mercer and Middlesex counties lying within a continuous line beginning at the intersection of the New Jersey Turnpike and Rt. 522 near Jamesburg; then south on the Turnpike to its intersection with Interstate 195, then east on Rt. I-195 to its intersection with Rt. 537 near Holmeson; then northeast on Rt. 537 to its intersection with Rt. 522 in Freehold; then northwest on Rt. 522 to its intersection with the New Jersey Turnpike, the point of beginning. Monmouth Battlefield State Park is excluded from this zone.

**Zone 16:** That portion of Monmouth and Ocean counties lying within a continuous line beginning at the intersection of Rt. 537 and Rt. 571 ►



## How Far Can Your Firearm Shoot?

### 12 gauge maximum distances for shot sizes:

No. 6	708 feet or 236 yards
No. 0	1,845 feet or 615 yards
No. 00	1,895 feet or 632 yards
Slug, 1 oz.	3,780 feet or 1,260 yards

**SPORTING ARMS AND AMMUNITION  
MANUFACTURERS' INSTITUTE, INC.**  
Safety Series,  
1075 Post Road, Riverside, CT 06878

- \* Distances above are with barrel held at an elevated angle for maximum trajectory. Always consider the angle of your barrel when shooting.
- \* Never shoot at or over the crest of a hill.
- \* All distances are approximate and can vary depending on the shotgun's gauge/choke and ammunition used.

# Deer Management Zone

## BOUNDARY DESCRIPTIONS

near Holmeson; then southeast on Rt. 571 to the intersection with Rt. 547; then northeast on Rt. 547 through Farmingdale to the intersection with Tinton Falls Rd.; then north on Tinton Falls Rd. to the intersection with Rt. 33 and Rt. 34; then north on Rt. 34 to the intersection with the fenced boundary of the Earle Naval Weapons Depot property; then westward along the fenced border of the Earle Depot to the intersection with Rt. 33; then west along Rt. 33 to the intersection with Rt. 537 in Freehold; then southwest on Rt. 537 to the intersection with Rt. 571 near Holmeson, the point of beginning.

**Zone 17:** That portion of Mercer, Monmouth, Burlington and Ocean counties lying within a continuous line beginning at the intersection of the New Jersey Turnpike and Interstate 195; then east along Interstate 195 to the intersection with Rt. 537 near Holmeson; then southwest along Rt. 537 to the intersection with Hawkin Rd. (Prospertown-Colliers Mills Rd.: Rt. 640) then southeast along Hawkin Rd. (Prospertown-Colliers Mills Rd.: Rt. 640) to the intersection with Colliers Mills Rd.; then west along Colliers Mills Rd. to its intersection with Woodruff Rd.; then southwest along Woodruff Rd. to the intersection with Rt. 539; then southeast along Rt. 539 to the border of Fort Dix Military Reservation; then westward along the Fort Dix Military Reservation boundary to Rt. 545 near Wrightstown; then northwest along Rt. 545 to the intersection with the New Jersey Turnpike; then northeast along the New Jersey Turnpike to its intersection Interstate 195 the point of beginning.

**Zone 18:** That portion of Ocean County lying within a continuous line beginning at the intersection of Rt. 530 and the Garden State Parkway at South Toms River; then west along Rt. 530 to the intersection with Rt. 70; then west along Rt. 70 to the border of Fort Dix Military Reservation; then northward along the Fort Dix Military Reservation boundary to the northernmost intersection of the Fort Dix Military Reservation border and Rt. 539; then northwest along Rt. 539 to the intersection with Woodruff Rd.; then northeast along Woodruff Rd. to the intersection with Colliers Mills Rd.; then east along Colliers Mills Rd. to the intersection with Hawkin Rd. (Prospertown-Colliers Mills Rd.: Rt. 640); then northwest along Hawkin Rd. (Prospertown-Colliers Mills Rd.: Rt. 640) to the intersection with Rt. 537 near Prospertown; then northeast along Rt. 537 to the intersection with Rt. 571 near Holmeson; then southeast along Rt. 571 to the Garden State Parkway; then south along the Garden State Parkway to the point of beginning near South Toms River.

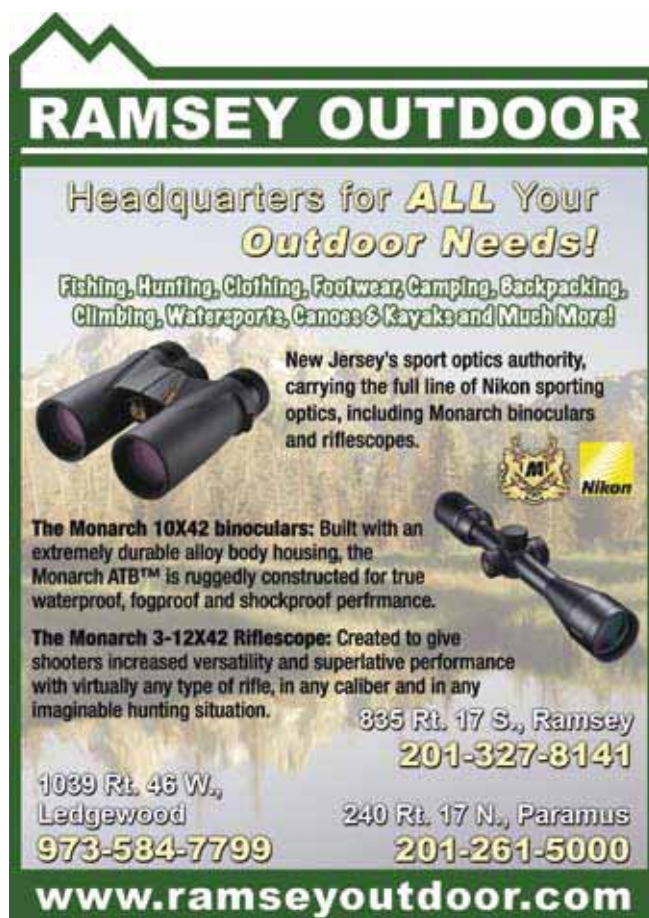
**Zone 19:** That portion of Burlington and Camden counties lying within a continuous line beginning at the intersection of Rt. 530 and Rt. 646 (New Lisbon-Four Mile Rd.); then southeast on Rt. 646 to its intersection with Turkey Buzzard Bridge Rd.; then west on Turkey Buzzard Bridge Rd. to its intersection with Rt. 644 (Buddtown-Ong's Hat Rd.); then southeast on Rt. 644 to its intersection with Rt. 70 at Four Mile Circle; then west on Rt. 70 to its intersection with Burr's Mill Rd.; then southwest on Burr's Mill Rd. to its intersection with Ave. Rd.; then south on Ave. Rd. to its intersection with Sooy Place Rd.; then south on Sooy Place Rd. to its intersection with Irick's Causeway; then southwest on Irick's Causeway to its intersection with Rt. 532 (Chatsworth Rd.); then south and southeast on Rt. 532 to its intersection with South Park Rd.; then south on South Park Rd. to its intersection with White Horse-Speedwell Rd.; then south on White Horse-Speedwell Rd. to its intersection with Eagle Rd.; then southwest on Eagle Rd. to its intersection with the railRd. tracks; then west following the railRd. tracks to their intersection with Carranza Rd.; then northwest on Carranza Rd. to its intersection with Tuckerton Rd.; then north and northwest on Tuckerton Rd. to its intersection with Forked Neck Rd. (Dingletown Rd.); then west along Forked Neck Rd. to its intersection with Rt. 206; then south along Rt. 206 to its intersection with Rt. 541, Stokes Rd.; then northwest along Rt. 541 to its intersection with Willow Grove Rd.; then southwest on Willow Grove Rd. to its intersection with Atsion Rd.; then northwest on Atsion Rd. to its inter-

section with Rt. 534, Jackson Rd.; then west along Rt. 534 to its intersection with Rt. 73; then north along Rt. 73 to its intersection with the New Jersey Turnpike; then northeast along the New Jersey Turnpike to its intersection with Rt. 38; then east along Rt. 38 to its intersection with Rt. 530; then east along Rt. 530 to its intersection with Rt. 616 (Vincentown-Pemberton Rd.); then northeast on Rt. 616, Hanover St., into the town of Pemberton to its intersection with Elizabeth St., then east on Elizabeth St., which becomes Pemberton-Browns Mills Rd. (Rt. 687) to its intersection with Rt. 530 (Pemberton-By-Pass Rd.); then east on Rt. 530 to its intersection with Rt. 646 (New Lisbon-Four Mile Rd.), the point of beginning. Fort Dix Military Reservation (Zone 37) is excluded from Zone 19.

**Zone 20:** Not designated.

**Zone 21:** That portion of Ocean and Burlington counties lying within a continuous line beginning at the intersection of Rt. 530 and the Garden State Parkway near South Toms River; then south along the Parkway to its intersection with Rt. 72; then northwest along Rt. 72 to its intersection with Rt. 644 (Buddtown-Ong's Hat Rd.) at Four Mile Circle; then northwest on Rt. 644 to its intersection with Turkey Buzzard Bridge Rd.; then northeast on Turkey Buzzard Bridge Rd. to its intersection with Rt. 646 (New Lisbon-Four Mile Rd.); then northwest on Rt. 646 to its intersection with Rt. 530 (Pemberton-Browns Mills Rd.); then east along the southern border of Fort Dix Military Reservation to its intersection with Rt. 70; then east on Rt. 70 to its intersection with Rt. 539 and Rt. 530 near Whiting; then east along Rt. 530 to its intersection with the Garden State Parkway near South Toms River, the point

(continued on page 40)



**RAMSEY OUTDOOR**

Headquarters for **ALL** Your Outdoor Needs!

Fishing, Hunting, Clothing, Footwear, Camping, Backpacking, Climbing, Watersports, Canoes & Kayaks and Much More!

New Jersey's sport optics authority, carrying the full line of Nikon sporting optics, including Monarch binoculars and riflescopes.

**The Monarch 10X42 binoculars:** Built with an extremely durable alloy body housing, the Monarch ATB™ is ruggedly constructed for true waterproof, fogproof and shockproof performance.

**The Monarch 3-12X42 Rifle Scope:** Created to give shooters increased versatility and superlative performance with virtually any type of rifle, in any caliber and in any imaginable hunting situation.

835 Rt. 17 S., Ramsey  
201-327-8141

1039 Rt. 46 W.,  
Ledgewood  
973-584-7799

240 Rt. 17 N., Paramus  
201-261-5000

[www.ramseyoutdoor.com](http://www.ramseyoutdoor.com)

# Deer Management Zone

## BOUNDARY DESCRIPTIONS

(continued from page 39)

of beginning. Fort Dix Military Reservation (Zone 37) is excluded from Zone 21.

**Zone 22:** That portion of Ocean and Burlington counties lying within a continuous line beginning at the intersection of the Garden State Parkway and Rt. 72 near Manahawkin; then south along the Garden State Parkway to its intersection with Stage Rd.; then west along Stage Rd. to its intersection with Leektown Rd.; then west along Leektown Rd. (which turns into Rt., 653 to its intersection with the Wading River; then south along the east bank of the Wading River to its intersection with the Mullica River and the Atlantic-Burlington County line; then east along the Atlantic-Burlington County line to the Atlantic Ocean, then east to the Atlantic Ocean; then north along the Atlantic Ocean to Rt. 72 at Ship Bottom; then west along Rt. 72 to the Garden State Parkway, the point of beginning. The Edwin B. Forsythe National Wildlife Refuge (Zone 58) is excluded from Zone 22.

**Zone 23:** That portion of Burlington, Atlantic and Camden counties lying with a continuous line beginning at the intersection of Rt. 563 and the Mullica River at the Atlantic-Burlington County line near Green Bank; then north and west along the north bank of the Mullica River to its intersection with Rt. 542 at Pleasant Mills; then west along Rt. 542 to its intersection with Nescochague Creek; then northwest along Nescochague Creek to Great Swamp Branch; then westward along Great Swamp Branch to its intersection with Rt. 206 (just south of the intersection of Rt. 206 and Middle Rd.); then north along Rt. 206 to its intersection with Albertson Brook (about 4 miles north of Hammonton); then westward along Albertson Brook until it becomes Blue Anchor Brook; then westward along Blue Anchor Brook to its intersection with Rt. 30, near Cedar Ave., south of Ancora; then northwest along Rt. 30 to its intersection with Rt. 73; then north on Rt. 73 to its intersection with Rt. 534, Jackson Rd.; then east along Rt. 534 to its intersection with Atsion Rd.; then southeast on Atsion Rd. to its intersection with Willow Grove Rd.; then northeast on Willow Grove Rd. to its intersection with Rt. 541, Stokes Rd.; then southeast along Rt. 541 to its intersection with Rt. 206; then north along Rt. 206 to its intersection with Forked Neck Rd.; then east along Forked Neck Rd. (Dingletown Rd.) to its intersection with Tuckerton Rd.; then southeast and south on Tuckerton Rd. to its intersection with Carranza Rd., then southeast on Carranza Rd. to its intersection with the railRd. tracks; then east following the railRd. tracks to their intersection with Eagle Rd.; then northeast on Eagle Rd. to its intersection with White Horse-Speedwell Rd.; then north on White Horse-Speedwell Rd. to their intersection with South Park Rd.; then north on South Park Rd. to its intersection with Rt. 532 (Chatsworth Rd.); then northwest on Rt., 532 to its intersection with Irick's Causeway; then northeast on Irick's Causeway to its intersection with Sooy Place Rd. (Vincentown-South Park Rd.); then northwest on Sooy Place Rd. to its intersection with Ave. Rd.; then northeast on Ave. Rd. to its intersection with Burr's Mill Rd.; then northeast on Burr's Mill Rd. to its intersection with Rt. 70; then east on Rt. 70 to its intersection with Rt. 72 at Four Mile Circle; then southeast on Rt. 72 to its intersection with Rt. 563; then southwest along Rt. 563 to its intersection with the Mullica River at the Atlantic-Burlington County line, the point of beginning near Green Bank.

**Zone 24:** That portion of Burlington and Ocean counties lying within a continuous line beginning at the intersection of Rt. 563 and Rt. 72; then southeast along Rt. 72 to its intersection with the Garden State Parkway; then south along the Parkway to its intersection with Stage Rd.; then west along Stage Rd. to its intersection with Leektown Rd.; then west along Leektown Rd. (which turns into Rt. 653) to its intersection with the Wading River; then south along the east bank of the Wading River to its intersection with the Mullica River and the Atlantic-Burlington County line; then west along the north bank of the Mullica River to its intersection with Rt. 563 near Green Bank; then north along Rt. 563 to its intersection with Rt. 72, the point of beginning.

**Zone 25:** That portion of Salem, Gloucester, Atlantic and Camden counties lying within a continuous line beginning at the intersection of Rt. 54 and Rt. 40 near Buena; then west on Rt. 40 to its intersection with Rt. 553; then north on Rt. 553 to its intersection with Rt. 610 (Aura Rd.); then southeast on Rt. 610 to its intersection with Rt. 655 (Fries Mill Rd. then north on Rt. 655 to its intersection with Rt. 322; then west on Rt. 322 to its intersection with Rt. 47 at Glassboro; then north on Rt. 47 to its intersection with County Rt. 635 (Hurville-Grenloch Rd.); then eastward on County Rd. 635 to its intersection with County Rd. 705 (County House Rd.); then southeast along Rt. 705 to its intersection with County Rd. 688 (Turnerville-Hickstown Rd.); then eastward along County Rd. 688 to its intersection with County Rd. 689 (Berlin-Crosskeys Rd.); then northeast along County Rd. 689 to its intersection with Rt. 73 at Berlin; then south on Rt. 73 to its intersection with Rt. 30; then southeast along Rt. 30 to its intersection with Blue Anchor Brook, just past Cedar Ave., south of Ancora; then eastward along Blue Anchor Brook until it becomes Albertson Brook at Fleming Pike; then eastward along Albertson Brook to its intersection with Rt. 206 (about four miles north of Hammonton); then south on Rt. 206 to its intersection with Great Swamp Branch (just past the intersection of Rt. 206 and Middle Rd.); then eastward along Great Swamp Branch to its intersection with Nescochague Creek; then eastward along Nescochague Creek to Nescochague Lake, at Pleasant Mills; then westward along the north and western shore of Nescochague Lake to its intersection with Hammonton Creek; then westward along Hammonton Creek to its intersection with Rt. 30 (White Horse Pike), near Hammonton; then southeast on Rt. 30 to its intersection with Weymouth Rd. (Rts. 640-559); then southward on Weymouth Rd. to its intersection with the Atlantic City Expressway; then west along the Atlantic City Expressway to its intersection with Eighth St.; then south along Eighth St. to its intersection with Rt. 322; then westward on Rt. 322 to its intersection with Rt. 54; then southward on Rt. 54 to its intersection with Rt. 40 near Buena, the point of beginning. Zone 65 is excluded from Zone 25.

**Zone 26:** That portion of Atlantic County lying within a continuous line beginning at the intersection of Rts. 40 and 54 near Buena; then southeast on Rt. 40 to its intersection with Rt. 50; then north on Rt. 50 to its intersection with Rt. 322; then east on Rt. 322 to its intersection with Cologne Ave.; then north on Cologne Ave. to its intersection with Duerer St.; then east on Duerer St. to its intersection with Rt. 575; then northeast on Rt. 575 to its intersection with the Garden State Parkway; then north along the Garden State Parkway to its intersection with the Mullica River and the Atlantic-Burlington County line; then northwest along the south bank of the Mullica River to its intersection with Rt. 542 at Pleasant Mills; then west on Rt. 542 to its intersection with Nescochague Creek at Pleasant Mills; then south along the west bank of Nescochague Creek to Nescochague Lake; then southwest along the western bank of Nescochague Lake to its intersection with Hammonton Creek; then westward along Hammonton Creek to its intersection with Rt. 30 (White Horse Pike), near Hammonton; then south on Rt. 30 to its intersection with Weymouth Rd. (Rts. 640-559); then south on Weymouth Rd. to its intersection with the Atlantic City Expressway; then northwest along the Atlantic City Expressway to its intersection with Eighth St.; then southwest along Eighth St. to its intersection with Rt. 322 (Black Horse Pike); then northwest along Rt. 322 to its intersection with Rt. 54; then southwest along Rt. 54 to its intersection with Rt. 40 at Buena, the point of beginning. The Atlantic County Park System (Zone 61) is excluded from Zone 26.

**Zone 27:** That portion of Cumberland and Salem counties lying within a continuous line beginning at the intersection of Rts. 77 and 40 at Pole Tavern; then northwest on Rt. 40 to its intersection with Rt. 48; then west on Rt. 48 through Penns Grove to the Delaware River; then south along the east bank of the Delaware River to its intersection with the Salem Canal at Deepwater; then eastward along the south bank ➤

of the Salem Canal to its intersection with the Salem River; then southward along the west bank of the Salem River to its intersection with Rt. 49 at Salem; then southeast on Rt. 49 to its intersection with Salem County Rt. 667 (Pecks Corner-Cohansey Rd.) at Pecks Corner; then eastward along Rt. 667 to its intersection with Rt. 540; then east along Rt. 540 to its intersection with Rt. 77; then north on Rt. 77 to its intersection with Rt. 40 at Pole Tavern, the point of beginning.

**Zone 28:** That portion of Gloucester, Cumberland and Salem counties lying within a continuous line beginning at the intersection of Rts. 77 and 40 at Pole Tavern; then east on Rt. 40 to its intersection of Rt. 47 at Malaga; then south on Rt. 47 to its intersection of Rt. 49 in Millville; then west on Rt. 49 to its intersection with Salem County Rt. 667 (Pecks Corner-Cohansey Rd.) at Pecks Corner; then eastward along Rt. 667 to its intersection with Rt. 540; then east on Rt. 540 to its intersection with Rt. 77; then north on Rt. 77 to Pole Tavern, the point of beginning.

**Zone 29:** That portion of Salem and Cumberland counties lying within a continuous line beginning with the intersection of Rts. 77 and 49 at Bridgeton; then northwest on Rt. 49 to its intersection with Alloway Creek at Quinton; then southwest along the northern bank of the Alloway Creek to its intersection with the Delaware River; then south along the east bank of the Delaware River to the Cohansey River; then along the northwest bank of the Cohansey River to Bridgeton, the point of beginning.

**Zone 30:** That portion of Cumberland County lying within a continuous line beginning at Fairton on the Cohansey River; then west along the south bank of the Cohansey River to the Delaware River; then southeast along the east bank of the Delaware River to the Maurice River; then north along the west bank of the Maurice River to Haleyville-Mauricetown Rd. (County Rd. 676); then west on Haleyville-Mauricetown Rd. to its intersection with the Central RailRd. of New Jersey (C.R.R.N.J.); then west along the C.R.R.N.J. line to its intersection with Newport-Centre Grove Rd. (County Rd. 629); then southwest on Newport-Centre Grove Rd. to its intersection with Rt. 553, then northwest on Rt. 553 to Fairton, the point of beginning.

**Zone 31:** That portion of Cumberland County lying within a continuous line beginning at the intersections of Routes 77 and 49 at Bridgeton; then east on Rt. 49 to the Maurice River near Millville; then south along the west bank of the Maurice River near Millville; then south along the west bank of the Maurice River to Buckshutem Creek; then west on the north bank of Buckshutem Creek to its intersection with Buckshutem Rd. (County Rd. 670); then northwest on Buckshutem Rd. to its intersection with Cedarville Rd. (County Rd. 610); then southwest on Cedarville Rd. to its intersection with Newport Centre Grove Rd. (County Rd. 629); then southwest on Newport Centre Grove Rd. to its intersection with Rt. 553; then northwest along Rt. 553 to the Cohansey River at Fairton; then north on the east bank of the Cohansey River to Bridgeton, the point of beginning.

**Zone 32:** Not designated.

**Zone 33:** Not designated.

**Zone 34:** That portion of Cumberland and Cape May counties lying within a continuous line beginning at the intersection of Rt. 47 and Rt. 548 in Port Elizabeth; then east on Rt. 548 to its intersection with Rt. 49; then northwest on Rt. 49 to its intersection with the Tuckahoe River at Head of River; then eastward along the south bank of the Tuckahoe River and Atlantic-Cape May County line to Great Egg Harbor Bay; then continuing eastward along the Atlantic-Cape May County line to the Atlantic Ocean at the Great Egg Harbor Inlet; then southwest along the Atlantic Ocean to Delaware Bay; then north and west along the east bank of Delaware Bay to the Maurice River; then north along the east bank of the Maurice River to Port Elizabeth and Rt. 548, the point of beginning.

**Zone 35:** That portion of Salem and Gloucester counties lying within a continuous line beginning at the east bank of the Delaware River at Penns Grove; then southeast on Rt. 48 to its intersection with Rt. 40; then southeast on Rt. 40 to its intersection with Rt. 553; then north on Rt. 553 to the intersection with Rt. 610 (Aura Rd.); then southeast on Rt. 610 to its intersection with Rt. 47 at Clayton; then north on Rt. 47 to its intersection with County Rt. 635 (Lambs Rd.) at Glassboro; then west on Rt. 635 to its intersection with Mantua Creek at Glassboro; then northwest along the Mantua Creek to the Delaware River; then southwest along the east bank of the Delaware River, to Penns Grove, the point of beginning. Chester and Mond's Islands lying in the Delaware River are in this zone.

**Zone 36:** That portion of Bergen, Hudson, Essex, Passaic, Morris, Union, Somerset and Middlesex Counties lying within a continuous line beginning at the intersection of Rt. 202 and the New York state line near Suffern; then south on Rt. 202 to its intersection with Rt. 287 in Oakland; then south along Rt. 287 to its intersection with Rt. 23; then Rt. 23 northwest to its intersection with Rt. 618; then south along Rt. 618 to its intersection with Rockaway Valley Rd.; then southwest along Rockaway Valley Rd. to its intersection with Diamond Spring Rd.; then south along Diamond Spring Rd. with West Main St. in Denville; then south along West Main St. to its intersection with Rt. 80; then east on Rt. 80 to its intersection with Rt. 511; then south on Rt. 511 to its intersection with Rt. 510; then west on Rt. 510 to its intersection with Rt. 124 at Morristown; then southeast on Rt. 124 to its intersection with Rt. 82; then southeast along Rt. 82 to its intersection with Rt. 22; then southwest on Rt. 22 to its intersection with Rt. 287 near Somerville; then southeast on Rt. 287 to its intersection with Rt. 18 near South Bound Brook; then southeast on Rt. 18 to its intersection with the New Jersey Turnpike; then north on the Turnpike to its intersection with the Raritan River; then east along the north bank of the Raritan River to Raritan Bay and the New York state line; then north along the state line to Arthur Kill and west bank of the Hudson River; then west along the New Jersey-New York border to the point of beginning near Suffern.

**Zone 37:** That portion of Fort Dix Military Reservation, U.S. Dept. of the Army, designated as open for deer hunting, lying within Burlington and Ocean counties.

**Zone 38:** That portion of Great Swamp National Wildlife Refuge, U.S. Dept. of the Interior, designated as open for deer hunting, lying within Morris County.

**Zone 39:** That portion of Naval Weapons Station Earle, U.S. Department of the Navy designated as open for deer hunting, lying within Monmouth County.

**Zone 40:** That portion of Naval Weapons Station Earle, Waterfront Section, U.S. Department of the Navy, designated as open for deer hunting, lying within Monmouth County.

**Zone 41:** That portion of Hunterdon and Mercer counties lying within a continuous line beginning at the intersection of Rt. 31 and Rt. 202 at Ringoes; then south along Rt. 31 to its intersection with Rt. 546 at the Pennington traffic circle; then west along Rt. 546 to the Delaware River; then north along east bank of Delaware River to its intersection with Rt. 202; then north along Rt. 202 to the point beginning at Ringoes.

**Zone 42:** That portion of Atlantic County lying within a continuous line beginning at the intersection of the south bank of the Mullica River and the Garden State Parkway; then south along the Garden State Parkway to its intersection with Rt. 575; then southwest along Rt. 575 to its intersection with Duerer St.; then west on Duerer St. to its intersection with Cologne Ave.; then south on Cologne Ave. to its intersection with Rt. 322; then west on Rt. 322 to its intersection with Rt. 50; then south

(continued on page 42)

# Deer Management Zone

## BOUNDARY DESCRIPTIONS

(continued from page 41)

on Rt. 50 to its intersection with the Great Egg Harbor River at Mays Landing; then south along the east bank of the Great Egg Harbor River to the Atlantic-Cape May County line in Great Egg Harbor Bay; then eastward along the Atlantic-Cape May County line to its intersection with the Atlantic Ocean at the Great Egg Harbor Inlet; then northeast along the Atlantic Ocean to Great Bay; then west along the south shore of Great Bay to the confluence of the Mullica River; then west along the south bank of the Mullica River to its intersection with the Garden State Parkway, the point of beginning. The Edwin B. Forsythe National Wildlife Refuge (Zones 56 and 57), the Atlantic County Park System (Zone 61) and the lands (excluding Laurel Memorial Park Cemetery), Rd.s, right of ways and easements within the contiguous boundary of the Federal Aviation Administration William J. Hughes Technical Center (Zone 66) are excluded from Zone 42.

**Zone 43:** That portion of Cumberland County lying within a continuous line beginning at the intersection of Buckshutem Rd. (County Rd. 670) and Cedarville Rd. (County Rd. 610); then southwest on Cedarville Rd. to its intersection with Newport Centre Grove Rd. (County Rd. 629); then southwest on Newport Centre Grove Rd. to its intersection with the Central RailRd. of New Jersey (C.R.R.N.J.); then east on the C.R.R.N.J. line to its intersection with Haleyville Rd. (County Rd. 676) at Mauricetown Station; then east on Haleyville Rd. to its intersection with the Maurice River at Mauricetown; then north along the west bank of the Maurice River to the north bank of Buckshutem Creek at Laurel Lake; then west along the north bank of Buckshutem Creek to Buckshutem Rd.; then northwest on Buckshutem Rd. to its intersection with Cedarville Rd., the point of beginning.

**Zone 44:** Not designated.

**Zone 45:** That portion of Cumberland, Atlantic and Cape May counties lying within a continuous line beginning at the intersection of BRd. St. (Rt. 552 spur) and Delsea Drive (Rt. 47); then northeast along Rt. 552 spur to Rt. 552; then continuing northeast along Rt. 552 to its intersection with the Tuckahoe River at Milmay; then south along the west bank of the Tuckahoe River to its intersection with Rt. 49 at Hunter's Mill; then southeast on Rt. 49 to its intersection with Rt. 548; then west on Rt. 548 to its intersection with Delsea Drive (Rt. 47) and the Manumuskin River in Port Elizabeth; then west along the south bank of Manumuskin River to its intersection with the Maurice River; then north along the east bank of the Maurice River to its intersection with Rt. 49 in Millville; then east on Rt. 49 to its intersection with Delsea Drive (Rt. 47); then north on Rt. 47 to its intersection with BRd. St. (Rt. 552 spur), the point of beginning.

**Zone 46:** That portion of Atlantic County lying within a continuous line beginning at the intersection of Rt. 49 and the Tuckahoe River at Hunter's Mill; then southeast along Rt. 49 to its intersection with the Tuckahoe River and the Atlantic-Cape May County line at Head of River; then eastward along the north bank of the Tuckahoe River to Great Egg Harbor Bay and the Egg Harbor Township line on the Egg Harbor River; then northwest along the west bank of the Egg Harbor River to its intersection with Rt. 40 at Mays Landing; then west on Rt. 40 to its intersection with Estell Ave; then south on Estell Ave. to its intersection with Rt. 552 then southwest on Rt. 552 to its intersection with the Tuckahoe River at Milmay; then south along the east bank of the Tuckahoe River to its intersection with Rt. 49 at Hunter's Mill the point of beginning. The Atlantic County Park System (Zone 61) is excluded from Zone 46.

**Zone 47:** That portion of Gloucester, Atlantic and Cumberland counties lying within a continuous line beginning at the intersection of Rts. 47 and 40 at Malaga; then southeast on Rt. 40 to its intersection with Estell Ave.; then south on Estell Ave to its intersection with Rt. 552; then southwest on Rt. 552 to spur 552; then west on spur 552 to its intersection with Rt. 47 at Millville; then north on Rt. 47 to Malaga, the point of beginning.

**Zone 48:** That portion of Burlington County lying within a continuous

line beginning at the intersection of the New Jersey Turnpike and Route 38 near Moorestown; then east along Rt. 38 to its intersection with Route 530; then east along Rt. 530 along the Pemberton by-pass to its intersection with the southern boundary of Fort Dix Military Reservation; then northward along the western Fort Dix boundary to its intersection with County Rd. 670; then east on County Rd. 670 to its intersection with Route 545 at Wrightstown; then northwest on Route 545 which becomes Farnsworth Ave.; then continuing northwest on Farnsworth Ave. to its intersection with W. Burlington St.; then southwest on W. Burlington St. to its intersection with Interstate 295; then north on Interstate 295 to its intersection with Crosswicks Creek at Bordentown; then west along the south bank of Crosswicks Creek to its intersection with the Delaware River at Bordentown; then southwest along the east bank of the Delaware River to Route 541 at the City of Burlington; then southeast along Route 541 to its intersection with Interstate 295; then southwest along Interstate 295 to its intersection with Rancocas Creek; then east along Rancocas Creek to its intersection with the New Jersey Turnpike; then southwest along the New Jersey Turnpike to its intersection with Route 38, the point of beginning. New Bold and Burlington Islands lying in the Delaware River are in this zone.

**Zone 49:** That portion of Gloucester, Camden and Burlington counties lying within a continuous line beginning at the mouth of Mantua Creek on the Delaware River; then northeast along the east bank of the Delaware River to Rt. 541 at the City of Burlington; then southeast along Rt. 541 to its intersection with Interstate 295; then southwest along Interstate-295 to its intersection with Rancocas Creek; then east along the Rancocas Creek to its intersection with the New Jersey Turnpike; then southwest along the New Jersey Turnpike to its intersection with Rt. 73; then south along Rt. 73 to its intersection with County Rd. 689 (Cross Keys Rd.) at Berlin; then southwest along County Rd. 689 to its intersection with County Rd. 688 Turnersville-Hickstown Rd.); then west along County Rd. 688 to its intersection with County Rd. 705; then northwest along County Rd. 705 (County House Rd.) to its intersection with County Rd. 635 (Grenlode-Hurville Rd.); then southwest on County Rd. 635 to its intersection with Mantua Creek; then northwest along Mantua Creek to its mouth at the Delaware River, the point of beginning. Petty Island lying in the Delaware River is in this zone.

**Zone 50:** That portion of Monmouth and Middlesex counties lying within a continuous line beginning at the intersection of the New Jersey Turnpike and Rt. 522 near Jamesburg; then southeast on Rt. 522 to the intersection with Rt. 537 at Freehold; then southwest on Rt. 537 to the intersection with business Rt. 33; then east on Rt. 33 to the intersection with the western edge of the fenced boundary of the Earle Naval Weapons Depot; then north and east along the fenced boundary of the Earle Depot to the intersection of County Route 38 (Wayside Rd.) and Rt. 547 at the most eastern point of the fenced boundary of Naval Weapons Station-Earle; then northeast on Rt. 547 to the intersection with the Garden State Parkway; then north on the Garden State Parkway to the intersection with Rt. 36 near Eatontown; then east on Rt. 36 to the Atlantic Ocean; then north along the Atlantic coastline to the Raritan Bay; then south and west along the southern shore of Raritan Bay to the Raritan River; then continuing west along the south bank of the Raritan River to the intersection with the New Jersey Turnpike; then southwest along the New Jersey Turnpike to the intersection with Rt. 522, the point of beginning. Monmouth Battlefield State Park (Zone 64), and Naval Weapons Station Earle (Zones 39 and 40), are excluded from this zone.

**Zone 51:** That portion of Monmouth and Ocean counties lying within a continuous line beginning at the intersection of Rt. 547 and Rt. 571 near Lakehurst; then southeast along Rt. 571 to the intersection with the Garden State Parkway; then south on the Garden State Parkway to its intersection with Rt. 72 near Manahawkin; then east along Rt. 72 to the Atlantic Ocean at Ship Bottom; then north along the Atlantic coastline to the intersection with Rt. 36 in Long Branch; then west on Rt. ➤

# Deer Management Zone

## BOUNDARY DESCRIPTIONS

36 to the intersection with the Garden State Parkway near Eatontown; then south on the parkway to the intersection with 547; then south on Rt. 547 to the intersection with county route 38 (Wayside Rd.) at the eastern fenced boundary of Naval Weapons Station-Earle; then south along the eastern fenced boundary of Naval Weapons Station-Earle to the intersection with Rt. 34; then south on Rt. 34 to the intersection with Tinton Falls Rd. and Rt. 33; then south on Tinton Falls Rd. to the intersection with Rt. 547 (Asbury Rd.); then south on Rt. 547 through Farmingdale to the intersection with Rt. 571, the point of beginning.

**Zone 52:** Not designated.

**Zone 53:** That portion of Lakehurst Naval Air Engineering Center, U.S. Department of the Navy, designated as open for deer hunting, lying within Ocean county.

**Zone 54:** Those portions of Picatinny Arsenal, U.S. Department of the Army, Installation Management Agency (IMA), designated as open for deer hunting, lying within Morris County.

**Zone 55:** That portion of Gloucester County lying within a continuous line beginning at the intersection of Rts. 47 and 322 at Glassboro; then east along Rt. 322 (County Rt. 536) to its intersection with Rt. 655 (Fries Mill Rd.); then south on Rt. 655 to its intersection with Rt. 610 (Academy Ave.); then west on Rt. 610 to its intersection with Rt. 47 (Delsea Drive) at Clayton; then north along Rt. 47 to its intersection with Rt. 322 at Glassboro, the point of beginning.

**Zone 56:** That portion of Edwin B. Forsythe National Wildlife Refuge, U.S. Department of the Interior, located south of Stoney Hill Rd., designated as open for deer hunting, lying within Atlantic County.

**Zone 57:** That portion of Edwin B. Forsythe National Wildlife Refuge, U.S. Department of the Interior, located north of Stoney Hill Rd. and south of the Mullica River, designated as open for deer hunting, lying within Atlantic County.

**Zone 70:** Those portions of Edwin B. Forsythe National Wildlife Refuge, including the Barnegat Division, U.S. Department of the Interior, located north of the Mullica River and south of Rt. 72, designated as open for deer hunting, lying within Burlington and Ocean Counties.

**Zone 58:** Those portions of Edwin B. Forsythe National Wildlife Refuge, including the Barnegat Division, U.S. Department of the Interior, located north of the Mullica River and north of Rt. 72, designated as open for deer hunting, lying within Ocean county.

**Zone 59:** Not designated.

**Zone 60:** Not designated.

**Zone 61:** Those portions of the Atlantic County Park System, County of Atlantic, designated as open for deer hunting, lying within Atlantic County.

**Zone 62:** Not designated.

**Zone 63:** That portion of Salem County lying within a continuous line beginning at the intersection of the Salem Canal and the Delaware River at Deepwater; then eastward along the south bank of the Salem Canal to its intersection with the Salem River; then southward along the west bank of the Salem River to its intersection with Rt. 49 at Salem; then southeastward on Rt. 49 to its intersection with Alloway Creek at Quinton; then southwest along the northern bank of the Alloway Creek to its intersection with the Delaware River; then northward along the east bank of the Delaware River and New Jersey State line to Finns Point and Fort Mott State Park; then northward along the New Jersey state line to the Delaware River; then northwest along the east bank of the Delaware River; then northwestward along the east bank of the Delaware River and New Jersey state line to its intersection with the Salem Canal at Deepwater, the point of beginning.

**Zone 64:** That portion of Monmouth Battlefield State Park, designated as open for deer hunting, lying within Monmouth County.

**Zone 65:** That portion of Camden and Gloucester counties lying within a continuous line beginning at the intersection of Rt. 322 and County Rd. Rt. 659 (Malaga-New Brooklyn Rd.) in Monroe Township, Gloucester County; then northeast along Rt. 659 to its intersection with County Rd. Rt. 536 at New Brooklyn; then northward along Rt. 536 to its intersection with County Rd. Rt. 720 (Brooklyn-Blue Anchor Rd.); then southeast on Rt. 720 to its intersection with Rt. 73 near Blue Anchor; then southward along Rt. 73 to its intersection with Piney Hollow Rd.; then southwest along Piney Hollow Rd. to its intersection with Rt. 322; then west along Rt. 322 to its intersection with County Rd. Rt. 659, the point of beginning.

**Zone 66:** That portion of Atlantic County including lands, Rd.s, right of ways and easements within the contiguous boundary of the Federal Aviation Administration William J. Hughes Technical Center, excluding Laurel Memorial Park Cemetery. Lands open for deer hunting only and persons authorized to hunt deer on the facility shall be determined by the Federal Aviation Administration William J. Hughes Technical Center, the administrative agency.

**Zone 67:** That portion of High Point State Park, located north and east of Deckertown Turnpike (Rt. 650), designated as open to hunting, lying within Sussex County.

**Zone 68:** That portion of the Franklin Parker Preserve and Four Mile Spring Preserve, designated as open to deer hunting, lying within Woodland Township, Burlington County.

**Zone 70:** Those portions of Edwin B. Forsythe National Wildlife Refuge, including the Barnegat Division, U.S. Department of the Interior, located north of the Mullica River and south of Rt. 72, designated as open for deer hunting, lying within Burlington and Ocean Counties. ♫



**ELY**  
**DEER PROCESSING**  
**ElyDeerProcessing.com**  
**(215) 860-0669**  
401 Woodhill Road, Newtown, PA 18940

<b>Deer Pick-up Times</b> <b>Early Season:</b> Sat. 9 am–2 pm <b>From Thanksgiving–</b> <b>End of January</b> Thurs. 7 pm–9 pm Sat. 9 am–2 pm <b>Deer Drop Off 24-7</b> \$20.00 deposit on all deer	<ul style="list-style-type: none"><li>• <b>NEW BBQ Snack Sticks</b> •</li><li>• Venison BBQ •</li><li>• <b>Burger (with pork or bacon)</b> •</li><li>• <b>Sausage (hot or sweet)</b> •</li><li>• Deer Roll •</li><li>• Kielbasa •</li><li>• Bologna •</li><li>• <b>Honey Bologna</b> •</li><li>• <b>Bologna with Cheese</b> •</li><li>• <b>Snack Sticks</b> •</li><li>• <b>Reconstructed Jerky</b> •</li><li>• Hot Dogs •</li><li>• <b>Seasoned Patties</b> •</li><li>• <b>Smoked Tennessee Sausage</b> •</li><li>• Minute Steaks •</li><li>• Dried Beef •</li><li>• <b>Marinated Chops</b> •</li><li>• Jerky •</li><li>• <b>Cape out service</b> •</li></ul>
---	---



# Deer Season

## REGULATION SETS

### REGULATION SET #1: ZONE - 4

- Legal hunting hours: ½ hour before sunrise to ½ hour after sunset. No deer hunting on Sundays.
- For more details, see Deer Hunting Regulations section, page 30.
- **Note:** Only one antlerless permit, per zone, may be purchased in each permit season. If a hunter purchases an antlerless permit for more than one zone in a season, the Antlered Buck Bonus Permit is valid for a ONE TIME USE in only ONE of the corresponding zones for that season. Properly licensed hunters are still limited to ONE antlered buck per season, regardless of the number of antlerless permits purchased.

**Fall Bow (24 days): Oct. 4-31, 2008** Season bag limit is two deer - only ONE may be antlered.

**Permit Bow (25 days): Nov. 1-29, 2008** Season bag limit is two deer. ONE may be antlered if the Antlered Buck Bow Permit is purchased. However, if the hunter chooses not to purchase the Antlered Buck Bow Permit then the bag limit is two antlerless deer only. (See Note above.)

**Youth Day - Bow (1 day): Sept. 27, 2008**

**Youth Day - Firearm (1 day): Nov. 22, 2008** Season bag limit is one deer of either sex for qualified youth hunters only. Any deer harvested by a qualified youth hunter accompanied by a similarly licensed, non-shooting adult mentor is NOT included as part of the bag limit for the Fall Bow or Six-day Firearm Season.

**Winter Bow (27 days): Jan. 1-31, 2009** Season bag limit is two deer - only ONE may be antlered.

**Permit Muzzleloader (12 days): Dec. 1, 2, 15, 16, 20-24 and 26-30, 2008** Season bag limit is two deer. ONE may be antlered if the Antlered Buck Muzzleloader Permit is purchased. However, if the hunter chooses not to purchase the Antlered Buck Muzzleloader Permit then the bag limit is two antlerless deer only. (See Note above.)

**Six-day Firearm (6 days): Dec. 8-13, 2008** Season bag limit is two antlered deer. However, if a hunter harvests two antlered deer, he/she forfeits the opportunity to harvest an antlered deer during the Permit Shotgun Season. Only one buck may be taken at a time.

**Permit Shotgun Season (1 day): Dec. 17, 2008** Season bag limit is one deer. This deer may be antlered if the Antlered Buck Shotgun Permit is purchased. However, if the hunter chooses not to purchase the Antlered Buck Shotgun Permit, or harvested two antlered deer during the Six-day Firearm Season, then the bag limit is one antlerless deer only. (See Note above.)

### *Color-coded to Regulation Set Reference Chart and Zone Map (page 48)*

### REGULATION SET #2: ZONES - 1, 3\*, 21, 23, 24, 43, 45, 46

\* Any antlered deer taken in Zone 3 must have at least three antler points on one side of the rack.

- Legal hunting hours: ½ hour before sunrise to ½ hour after sunset. No deer hunting on Sundays
- For more details, see Deer Hunting Regulations section, page 30.
- **Note:** Only one antlerless permit, per zone, may be purchased in each permit season. If a hunter purchases an antlerless permit for more than one zone in a season, the Antlered Buck Bonus Permit is valid for a ONE TIME USE in only ONE of the corresponding zones for that season. Properly licensed hunters are still limited to ONE antlered buck per season, regardless of the number of antlerless permits purchased.

**Fall Bow (24 days): Oct. 4-31, 2008** Season bag limit is two deer - only ONE may be antlered.

**Permit Bow (25 days): Nov. 1-29, 2008** Season bag limit is two deer. ONE may be antlered if the Antlered Buck Bow Permit is purchased. However, if the hunter chooses not to purchase the Antlered Buck Bow Permit then the bag limit is two antlerless deer only. (See Note above.)

**Youth Day - Bow (1 day): Sept. 27, 2008**

**Youth Day - Firearm (1 day): Nov. 22, 2008** Season bag limit is one deer of either sex for qualified youth hunters only. Any deer harvested by a qualified youth hunter accompanied by a similarly licensed, non-shooting adult mentor is NOT included as part of the bag limit for the Fall Bow or Six-day Firearm Season.

**Winter Bow (27 days): Jan. 1-31, 2009** Season bag limit is two deer - only ONE may be antlered.

**Permit Muzzleloader (21 days): Dec. 1, 2, 15, 16, 20-24, 26-31, 2008; Jan. 1-9, 2009** Season bag limit is two deer. ONE may be antlered if the Antlered Buck Muzzleloader Permit is purchased. However, if the hunter chooses not to purchase the Antlered Buck Muzzleloader Permit, then the bag limit is two antlerless deer only. (See Note above.)

**Six-day Firearm (6 days): Dec. 8-13, 2008** Season bag limit is two antlered deer. However, if a hunter harvests two antlered deer, he/she forfeits the opportunity to harvest an antlered deer during the Permit Shotgun Season. Only one buck may be taken at a time.

**Permit Shotgun Season (1 day): Dec. 17, 2008** Season bag limit is one deer. This deer may be antlered if the Antlered Buck Shotgun Permit is purchased. However, if the hunter chooses not to purchase the Antlered Buck Shotgun Permit or harvested two antlered deer during the Six-day firearm season, then the bag limit is one antlerless deer only. (See Note above.)

### REGULATION SET #3: ZONES - 6, 18, 30, 34, 55, 65

- **Legal hunting hours:** ½ hour before sunrise to ½ hour after sunset. No deer hunting on Sundays.
- For more details, see Deer Hunting Regulations section, page 30.
- **Note:** Only one antlerless permit, per zone, may be purchased in each permit season. If a hunter purchases an antlerless permit for more than one zone in a season, the Antlered Buck Bonus Permit is valid for a ONE TIME USE in only ONE of the corresponding zones for that season. Properly licensed hunters are still limited to ONE antlered buck per season, regardless of the number of antlerless permits purchased.

**Fall Bow (24 days):** Oct. 4-31, 2008 Season bag limit is two deer - only ONE may be antlered.

**Permit Bow (25 days):** Nov. 1-29, 2008 Season bag limit is two deer. ONE may be antlered if the Antlered Buck Bow Permit is purchased. However, if the hunter chooses not to purchase the Antlered Buck Bow Permit then the bag limit is two antlerless deer only. (See Note above.)

**Youth Day - Bow (1 day):** Sept. 27, 2008

**Youth Day - Firearm (1 day):** Nov. 22, 2008 Season bag limit is one deer of either sex for qualified youth hunters only. Any deer harvested by a qualified youth hunter accompanied by a similarly licensed, non-shooting adult mentor is NOT included as part of the bag limit for the Fall Bow or Six-day Firearm Season.

**Winter Bow (27 days):** Jan. 1-31, 2009 Season bag limit is two deer - only ONE may be antlered.

**Permit Muzzleloader (21 days):** Dec. 1, 2, 15, 16, 20-24, 26-31, 2008; Jan. 1-9, 2009 Season bag limit is two deer. ONE may be antlered if the Antlered Buck Muzzleloader Permit is purchased. However, if the hunter chooses not to purchase the Antlered Buck Muzzleloader Permit, then the bag limit is two antlerless deer only. (See Note above.)

**Six-day Firearm (6 days):** Dec. 8-13, 2008 Season bag limit is two antlered deer. However, if a hunter harvests two antlered deer, he/she forfeits the opportunity to harvest an antlered deer during the Permit Shotgun Season. Only one buck may be taken at a time.

**Permit Shotgun Season (3 days):** Dec. 17-19, 2008 Season bag limit is two deer. ONE may be antlered if the Antlered Buck Shotgun Permit is purchased. However, if the hunter chooses not to purchase the Antlered Buck Shotgun Permit or harvested two antlered deer during the Six-day firearm season, then the bag limit is two antlerless deer only. (See Note above.)

### Color-coded to Regulation Set Reference Chart and Zone Map (page 48)

### REGULATION SET #4: ZONES - 2, 16, 22, 26, 27\*, 28, 29\*, 31, 35\*, 47, 63\*

\* Any antlered deer taken in Zone 27, 29, 35 or 63 must have at least three antler points on one side of the rack.

- **Legal hunting hours:** ½ hour before sunrise to ½ hour after sunset. No deer hunting on Sunday.
- For more details, see Deer Hunting Regulations section, page 30.
- **Note:** Only one antlerless permit, per zone, may be purchased in each permit season. If a hunter purchases an antlerless permit for more than one zone in a season, the Antlered Buck Bonus Permit is valid for a ONE TIME USE in only ONE of the corresponding zones for that season. Properly licensed hunters are still limited to ONE antlered buck per season, regardless of the number of antlerless permits purchased.

**Fall Bow (42 days):**

First deer must be antlerless: Sept. 13-Oct. 3, 2008

First deer may be antlered or antlerless: Oct. 4-31, 2008

Season bag limit is unlimited antlerless deer and ONE antlered deer.

**Permit Bow (51 days):** Nov. 1-Dec. 24, 26-31, 2008 Season bag limit is unlimited antlerless deer. ONE antlered deer may be harvested if the Antlered Buck Bow Permit is purchased. (See Note above.)

**Youth Day - Bow (1 day):** Sept. 27, 2008

**Youth Day - Firearm (1 day):** Nov. 22, 2008 Season bag limit is one deer of either sex for any qualified youth hunter only. Any deer harvested by a qualified youth hunter accompanied by a similarly licensed, non-shooting adult mentor is NOT included as part of the bag limit for the Fall Bow or Six-day Firearm seasons.

**Winter Bow (27 days):** Jan. 1-31, 2009 Season bag limit is unlimited antlerless deer and ONE antlered deer.

**Permit Muzzleloader (21 days):** Dec. 1, 2, 15, 16, 20-24, 26-31, 2008; Jan. 1-9, 2009 Season bag limit is unlimited antlerless deer. ONE antlered deer may be harvested if the Antlered Buck Muzzleloader Permit is purchased. However, if the hunter chooses not to purchase the Antlered Buck Muzzleloader Permit, then the bag limit is unlimited antlerless deer only. (See Note above.)

**Six-day Firearm (6 days):** Dec. 8-13, 2008 Season bag limit is two antlered deer. However, if a hunter harvests two antlered deer, he/she forfeits the opportunity to harvest an antlered deer during the Permit Shotgun Season. Only one buck may be taken at a time.

**Permit Shotgun Season (10 days):** Dec. 17-19, 2008; and Jan. 10-17, 2009 Season bag limit is unlimited antlerless deer. ONE antlered deer may be harvested if the Antlered Buck Shotgun Permit is purchased. However, if the hunter harvests two antlered deer during the Six-day Firearm Season, then the bag limit is unlimited antlerless deer only. (See Note above.)

(continued on page 46)

# Deer Season

## REGULATION SETS

### Color-coded to Regulation Set Reference Chart and Zone Map (page 48)

#### REGULATION SET #6: ZONES - 5, 17, 19, 25, 42, 48

- **Legal hunting hours:** ½ hour before sunrise to ½ hour after sunset. No deer hunting on Sundays.
- For more details, see Deer Hunting Regulations section, page 30.
- **Note:** Only one antlerless permit, per zone, may be purchased in each permit season. If a hunter purchases an antlerless permit for more than one zone in a season, the Antlered Buck Bonus Permit is valid for a ONE TIME USE in only ONE of the corresponding zones for that season. Properly licensed hunters are still limited to ONE antlered buck per season, regardless of the number of antlerless permits purchased.

#### Fall Bow (42 days):

First deer must be antlerless: Sept. 13-Oct. 3, 2008

First deer may be antlered or antlerless: Oct. 4-31, 2008

Season bag limit is unlimited antlerless deer and ONE antlered deer.

**Permit Bow (51 days):** Nov. 1-Dec. 24, 26-31, 2008 Season bag limit is unlimited antlerless deer. ONE antlered deer may be harvested if the Antlered Buck Bow Permit is purchased. (See Note above.)

**Youth Day - Bow (1 day):** Sept. 27, 2008

**Youth Day - Firearm (1 day):** Nov. 22, 2008 Season bag limit is one deer of either sex for any qualified youth hunter only. Any deer harvested by a qualified youth hunter accompanied by a similarly licensed, non-shooting adult mentor is NOT included as part of the bag limit for the Fall Bow or Six-day Firearm Season.

**Six-day Firearm (6 days):** Dec. 8-13, 2008 Season bag limit is two antlered deer. However, if a hunter harvests two antlered deer, he/she forfeits the opportunity to harvest an antlered deer during the Permit Shotgun Season. Only one buck may be taken at a time.

**Winter Bow (27 days):** Jan. 1-31, 2009 Season bag limit is unlimited antlerless deer and ONE antlered deer.

#### Permit Muzzleloader (46 days):

**Antlered or Antlerless:** Dec. 1, 2, 15, 16, 20-24, 26-31, 2008; Jan. 1-31, 2009

**Antlerless deer only:** Dec. 8-13, 2008

Season bag limit is unlimited antlerless deer. ONE antlered deer may be harvested if the Antlered Buck Muzzleloader Permit is purchased. However, if the hunter chooses not to purchase the Antlered Buck Muzzleloader Permit, then the bag limit is unlimited antlerless deer only. Two deer may be taken at a time. (See Note above.)

#### Permit Shotgun Season (28 days):

**Antlerless deer only:** Dec. 8-13, 2008

**Antlered or Antlerless:** Dec. 17-19, 2008; Jan. 10-31, 2009

Season bag limit is unlimited antlerless deer. ONE antlered deer may be harvested if the Antlered Buck Shotgun Permit is purchased. However, if the hunter harvests two antlered deer during the Six-day firearm Season, then the bag limit is unlimited antlerless deer only. Two deer may be taken at a time. (See Note above.)

#### REGULATION SET #8: ZONES - 7, 8, 9\*, 10, 11, 12, 13\*, 14, 15, 36, 41, 49, 50, 51

\*Any antlered deer taken in Zones 9 or 13 must have at least three antler points on one side of the rack.

- **Legal hunting hours:** ½ hour before sunrise to ½ hour after sunset. No deer hunting on Sundays.
- For more details, see Deer Hunting Regulations section, page 30.
- **Note:** Only one antlerless permit, per zone, may be purchased in each permit season. If a hunter purchases an antlerless permit for more than one zone in a season, the Antlered Buck Bonus Permit is valid for a ONE TIME USE in only ONE of the corresponding zones for that season. Properly licensed hunters are still limited to ONE antlered buck per season, regardless of the number of antlerless permits purchased.

#### Fall Bow (42 days):

First deer must be antlerless: Sept. 13-Oct. 3, 2008

First deer may be antlered or antlerless: Oct. 4-31, 2008

Season bag limit is unlimited antlerless deer and ONE antlered deer.

**Permit Bow (51 days):** Nov. 1-Dec. 24, 26-31, 2008 Season bag limit is unlimited antlerless deer. ONE antlered deer may be harvested if the Antlered Buck Bow Permit is purchased. (See Note above.)

**Youth Day - Bow (1 day):** Sept. 27, 2008

**Youth Day - Firearm (1 day):** Nov. 22, 2008 Season bag limit is one deer of either sex for any qualified youth hunter only. Any deer harvested by a qualified youth hunter accompanied by a similarly licensed, non-shooting adult mentor is NOT included as part of the bag limit for the Fall Bow or Six-day Firearm Season.

**Six-day Firearm (6 days):** Dec. 8-13, 2008 Season bag limit is two antlered deer. However, if a hunter harvests two antlered deer, he/she forfeits the opportunity to harvest an antlered deer during the Permit Shotgun Season. Only one buck may be taken at a time.

**Winter Bow (45 days):** Jan. 1-Feb. 21, 2009 Season bag limit is unlimited antlerless deer and ONE antlered deer.

#### Permit Muzzleloader (61 days):

**Antlered or Antlerless:** Dec. 1, 2, 15, 16, 20-24, 26-31, 2008; and Jan. 1-Feb. 14, 2009

**Antlerless deer only:** Dec. 3-5, 8-13, 2008

Season bag limit is unlimited antlerless deer. ONE antlered deer may be harvested if the Antlered Buck Muzzleloader Permit is purchased. However, if the hunter chooses not to purchase the Antlered Buck Muzzleloader Permit, then the bag limit is unlimited antlerless deer only. Two deer may be taken at a time. (See Note above.)

#### Permit Shotgun Season (43 days):

**Antlerless deer only:** Dec. 3-5, 8-13, 2008

**Antlered or Antlerless:** Dec. 17-19, 2008; and Jan. 10-Feb. 14, 2009

Season bag limit is unlimited antlerless deer. ONE antlered deer may be harvested if the Antlered Buck Shotgun Permit is purchased. However, if the hunter harvests two antlered deer during the Six-day Firearm Season, then the bag limit is unlimited antlerless deer only. Two deer may be taken at a time. (See Note above.)