

# TRAWLING The Delaware Bay

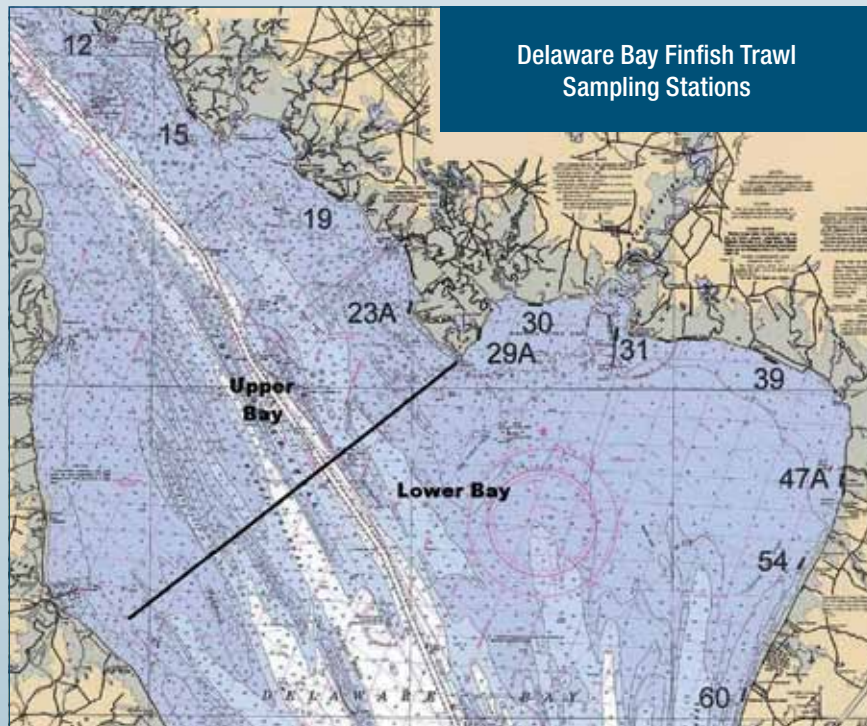
By Jennifer Pyle, Assistant Fisheries Biologist

**The Delaware Estuary is New Jersey's largest estuary system.** This semi-enclosed body of water mixes freshwater from the Delaware River with salt water from the Delaware Bay. It serves as a nursery area, spawning and feeding grounds and a migratory route for many recreational and commercial fish.

Each year New Jersey Division of Fish and Wildlife's Bureau of Shellfisheries biologists conduct several fisheries surveys to study the status of species populations within the estuary. One of these surveys is the Delaware Bay Juvenile Finfish Trawl Survey.

In 1991, Fish and Wildlife began a Delaware Bay trawl survey of juvenile finfish species to develop indices for comparing the relative annual abundance of selected stocks. The survey was designed to complement a similar effort being conducted on the western side of Delaware Bay by the State of Delaware's Division of Fish and Wildlife. Data collected allows biologists to develop relative abundance estimates and length frequencies of estuarine-dependent finfish, information necessary for predicting future fishery trends and harvest potential.

**Survey sampling stations** and their locations have varied over the years. Currently, there are 11 sampling stations located on shoals near the shoreline, extending from Villas in Cape May to the Cohansey River of Cumberland County. These near-shore stations have typically provided greater fish yields and more species diversity than sampling efforts in deeper waters.



### Sampling is conducted

with a 42-foot research vessel, the R/V Zephyrus. The sampling months have also varied. Presently, samples are collected at each location once a month from April to October. Single, ten-minute tows are conducted against the tide at each station.

### All species collected

are identified, counted and measured. If counts are high, 50 individual lengths are randomly selected and recorded. For finfish, fork lengths (tip of nose to inside fork of tail) are recorded for all species with a forked tail. For species without a forked tail, such as Atlantic croaker, a total length is measured.

**Water quality levels** are recorded at each sampling station. These parameters include salinity, water temperature and dissolved oxygen. Measurements are taken at the bottom of the water column at each station.

**Since 1991**, Fish and Wildlife has hauled 1,476 tows and caught 377,641 fish for an average of 255 fish per tow. A total of 83 species have been identified, the five most abundant being bay anchovy, Atlantic croaker, weakfish, blue crab and Atlantic herring.



Fish and Wildlife's Marine Fisheries staff deploy the 16-foot otter trawl net.

Common Name	Total Number Caught
Bay Anchovy	196,341
Atlantic Croaker	89,178
Weakfish	32,328
Blue Crab	23,067
Atlantic Herring	5,192

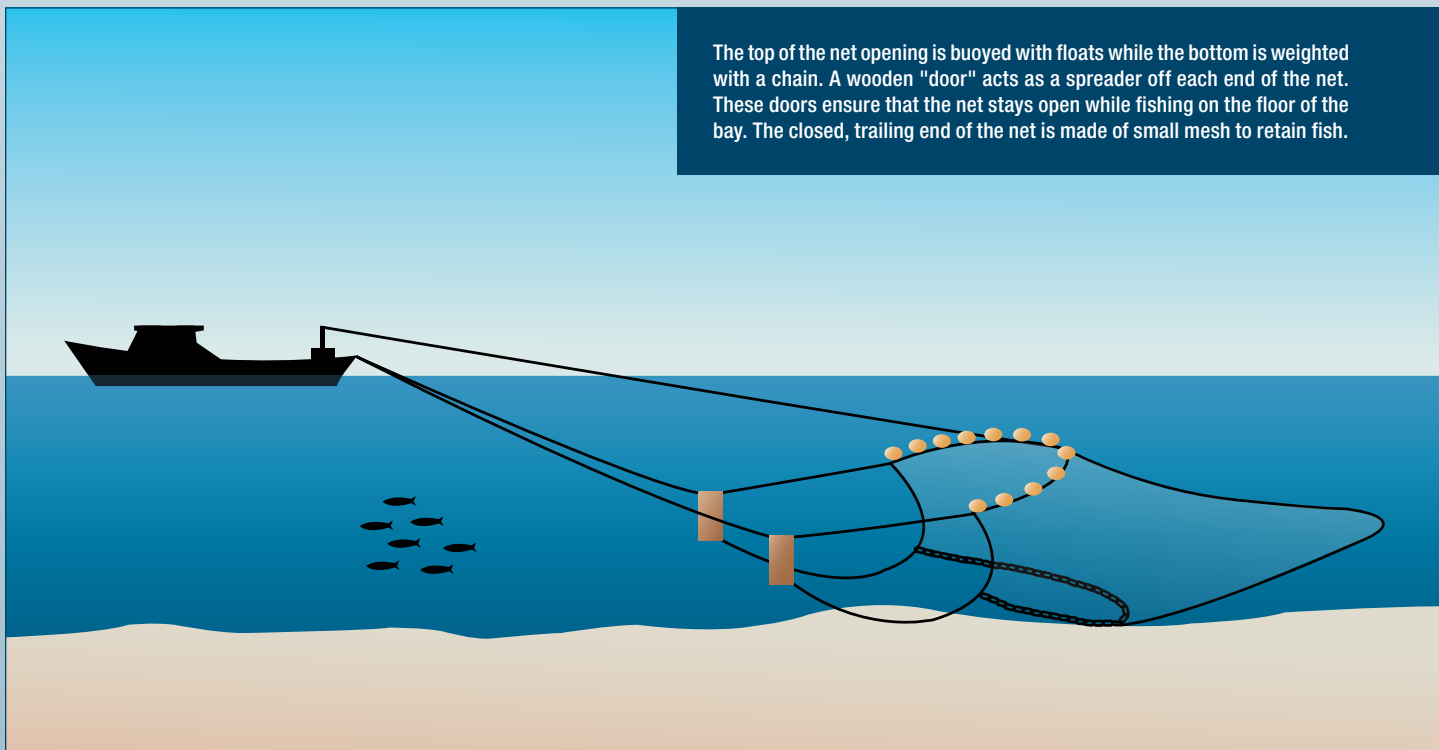
### Bay anchovy numbers

are decreasing at an alarming rate. Typically one of the most abundant species in the Delaware estuary, bay anchovy are a primary food source for many fish, including weakfish, bluefish and striped bass. The numbers caught in this survey peaked in 1998, with an average of 254 fish per tow. Anchovy numbers have been decreasing ever since. The lowest numbers were recorded in 2006, with catches averaging 48 fish per haul. The potential impact from this decrease has yet to be recognized, but

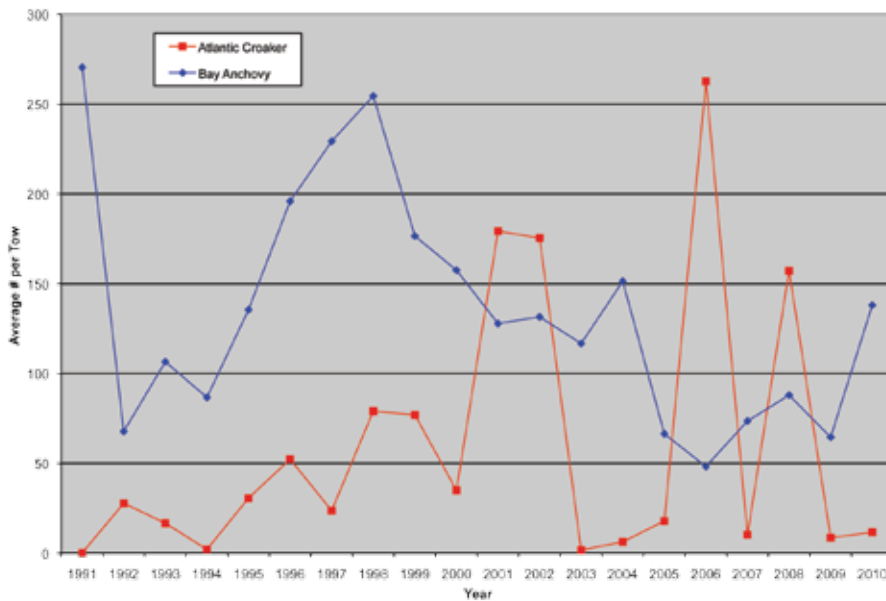
a recent decline in the Delaware Bay's weakfish population may be an indication of a food chain imbalance within this estuary. The average number of weakfish per haul in 2010 was 138 fish, which is the largest average since 2004.

**Atlantic croaker numbers** increased until 2001, when averages reached 179 fish per tow. Since that time there have been many fluctuations within the croaker population. Averages bottomed out in 2003 with only one fish per tow. Croaker reached the survey's peak in 2006, with an average of 262 fish per tow, yet dropped again the next year to an average of 10 fish per tow in 2007. Similar fluctuations are also seen in data collected from Fish and Wildlife's Ocean Trawl Survey. >

The top of the net opening is buoyed with floats while the bottom is weighted with a chain. A wooden "door" acts as a spreader off each end of the net. These doors ensure that the net stays open while fishing on the floor of the bay. The closed, trailing end of the net is made of small mesh to retain fish.



## Population Trends for Atlantic Croaker and Bay Anchovy



The overall number of weakfish caught during the trawl survey has been decreasing since 1999, when the average number per tow was 54 fish. The lowest average was in 1993, with three fish per tow. The drop to an average of 22 fish per tow during 2006 could have been due to severe flooding that year. Because of an above-average influx of freshwater into the bay, the weakfish most likely moved into regions with higher salinities. Despite a decreasing long-term trend, the average number of weakfish caught per haul has been increasing for the past three years.

While the trawl survey primarily catches finfish, 6.11 percent of the total catch for all years has been blue crabs. Over the years, the average number of blue crabs caught increased until 1997, when the average peaked at 35 crabs per tow. Since then, the averages have fluctuated.



Largest Ship's Store on Long Beach Island

- Full Service Marina
- Gas, Diesel and Outboard Service
- Fuel Dock and Pumpout Facility
- Slips Available
- Nautical Gifts, Clocks and Tableware



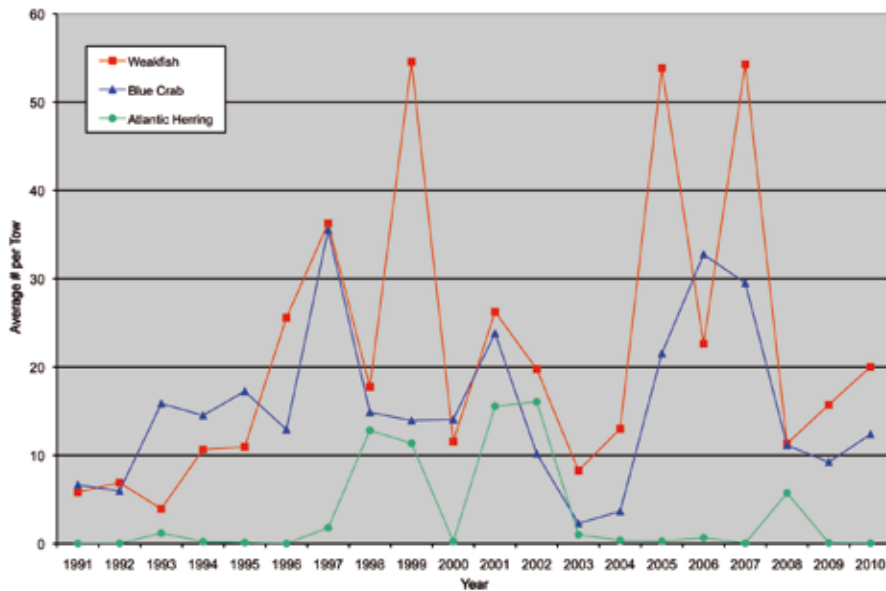
525 2nd Street · Buoy 106 · Beach Haven, NJ

609-492-2150  
[www.MorrisonLBI.com](http://www.MorrisonLBI.com)


Check Out Our Live Web Cam!



## Population Trends for Weakfish, Blue Crab and Atlantic Herring



**Surveys** like this are just the beginning of the stock assessment process for many species. Data collected from this survey shows fluctuations among all species across the years. The size of fish populations changes constantly due to many environmental factors. Fish and Wildlife is planning future research to examine species population variations.

**Fishery surveys** such as the Delaware Bay Juvenile Finfish Trawl are important for ecosystem management. Surveys provide biologists with data on annual abundance and population trends of many species and are essential to predict future fishery management needs. Awareness of population fluctuations is crucial when creating recreational and commercial fishing regulations. 

*\* Information for this article was provided by principal biologists Jeffrey Normant, lead investigator and Jason Heron, co-investigator of New Jersey Division of Fish and Wildlife's Delaware Bay Juvenile Finfish Trawl Survey program.*



**TACKLEDIRECT**  
World's Premier Fishing Outfitter.™

### **PENN** Penn Battle Spinning Reels

- 6 sealed stainless steel ball bearings
- Full metal body and sideplates
- Superline Spool
- Machined aluminum spool
- HT-100 drag washers
- Stainless steel main shaft
- Infinite anti-reverse
- Techno-balanced rotor

Starting at  
**\$99.95**



### **PENN** Penn Squall Star Drag Reels

- Live spindle w/ free floating spool
- Shielded ball bearings
- Stainless steel reel stand
- Lightweight graphite frame
- Quick high-speed gear ratio
- Counter-balanced handle
- HT-100 drag washers

Priced at  
**\$149.95**



**TACKLEDIRECT**  
World's Premier Fishing Outfitter.

► Visit us online: [www.TackleDirect.com](http://www.TackleDirect.com)



Order Toll-Free 1-888-354-7335 Mon-Sat 9am-6pm, Sun 9am-5pm ET

609.788.3819 • 6825 Tilton Road, Bldg C Egg Harbor Twp, NJ 08234-4426

# GOVERNOR'S SURF FISHING TOURNAMENT

By Karen Leskie, Wildlife Technician

**Get Outside and Enjoy a Day of Fishing with Family and Friends**

The 21<sup>st</sup> Annual Governor's Surf Fishing Tournament will be held Sunday, Oct. 7, 2012. Once again anglers from New Jersey and neighboring states will descend upon the beaches of Island Beach State Park in hopes of catching the longest fish of the day. The tournament aims to encourage youngsters and adults to learn more about surf fishing while taking advantage of a great family activity. Funds raised by the tournament go toward marine resource conservation and education.

A beautiful fall day was enjoyed by 20<sup>th</sup> Annual Tournament anglers with 67 eligible fish entered in blackfish, bluefish, kingfish and striped bass categories. A total of 22 prizes were awarded in categories for children, teens and adults. However, the grand prize went to Michael Nightingale of East Windsor, with a 33 $\frac{3}{4}$ -inch striped bass. DEP Commissioner, Bob Martin, along with Division of Fish and Wildlife Director Dave Chanda, congratulated Mr. Nightingale with a

plaque and two rod-and-reel combinations. Also, Mr. Nightingale's name has been engraved on the Governor's Cup, which is on permanent display at Island Beach State Park.

Since its inception in 1991, the tournament has generated more than \$120,000 for various marine education and restoration efforts, construction of access ramps for disabled saltwater anglers, surf fishing instruction programs and equipment, specialized wheel chairs that provide beach access to the disabled and elderly, plus the purchase of the first mobile automatic heart defibrillator for use at Island Beach State Park.

For more information about the Governor's Surf Fishing Tournament or to receive a registration form, visit [NJFishandWildlife.com/gsft.htm](http://NJFishandWildlife.com/gsft.htm) or call (609) 748-4347. 

**New Jersey Division of Fish and Wildlife** (along with our co-sponsors: New Jersey Division of Parks and Forestry, New Jersey State Federation of Sportsmen's Clubs, Jersey Coast Anglers Association and New Jersey Beach Buggy Association) would like to thank the following organizations for contributing to the success of the 20<sup>th</sup> Annual Governor's Surf Fishing Tournament in 2011:

- Canyon Gear
- Eagle Claw Fishing Tackle Company
- Grumpy's Bait & Tackle
- Legal Limits Company
- Manns Bait Company
- O Mustad & Son, Inc.
- Sportsman's Center
- Stanley Jigs, Inc.
- Surf Rocket
- Tru-Turn, Inc.
- TTI-Blakemore Fishing Group
- Wright & McGill Company

Photo: Daniel E. Beards



Left to right: Eileen Smith, President, Jersey Coast Anglers Association; Paul Harris, President, NJ Beach Buggy Association; Bob Martin, DEP Commissioner; Michael Nightingale, 20<sup>th</sup> Annual Governor's Surf Fishing Tournament winner; and Frank Dara, President, Governor's Surf Tournament Committee.

Jamie Derraw

**DAIWA • ST. CROIX • ABU GARCIA • QUANTUM • COSTA DEL MAR • JINKAI • BC PLUGS • MOMOI • VAN STAAL • SHIMANO**

**SUPER STRIKE • BERKLEY GULP • FROGG TOGGS • AQUASKINS • GAMAKATSU**

**ORVIS • PENN • POWER PRO • NORTHBAR • BOMBER • SC ANGLER • HOPKINS**



**Serving New Jersey  
for over 100 years!**



**NJ's LARGEST Sporting Goods Store**

**YOUR FISHING TACKLE DESTINATION**

Fresh & Saltwater Tackle – Friendly & Knowledgeable Staff!  
513 West Union Ave. Bound Brook, NJ · (732) 356-0604

Visit us at  
[www.efingersports.com](http://www.efingersports.com)

**HUNTING • FISHING • CAMPING • ATHLETIC EQUIPMENT • ARCHERY • KAYAKS • BICYCLES • GOLF • OUTDOOR & ATHLETIC CLOTHING  
FOOTWEAR • TEAM, SCHOOL & CORPORATE SALES • BOY SCOUT UNIFORMS • LARGE SELECTION OF CUSTOM SURF PLUGS**

Hours: Monday–Friday 9:30–9:00, Saturday 9:00–5:30, Sunday 10:00–5:00 • AMEX VISA M/C DEBIT  
Directions: 2 blocks east of I-287, exit 13A from I-287N, exit 13 from I-287S. 3 Blocks So. of Rt. 22 at the Thompson Ave. exit. 1/4 Mile east of the Bridgewater Promenade on Rt. 28.

**TRILINE • TSUNAMI • LAMIGLAS • MAUI JIM • SUFIX • SIMMS • AVET • G. LOOMIS • GIBBS • PRO-LINE • SEEKER • STORM**

# CROCODILE BAY RESORT

OSA PENINSULA, COSTA RICA

**Book  
Your Dream  
Sport Fishing  
Vacation Today!**  
1.800.733.1115



4 STAR RESORT | SPORT FISHING | ECO ADVENTURES | LUXURY SPA



Book Your World Class Fishing or Adventure Vacation Today 1-800-733-1115!



Crocodile Bay Resort USA Office 1250 North McDowell, Petaluma, CA 94954  
USA 1.800.733.1115 - local (707) 559 - 7990 fax (707) 559 - 7997  
visit us online at [www.crocodilebay.com](http://www.crocodilebay.com) CST# 2049694-10