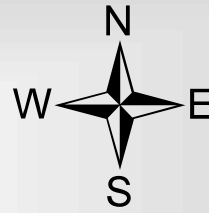
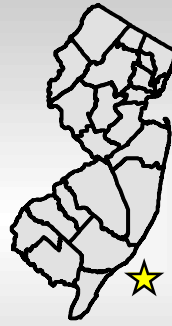
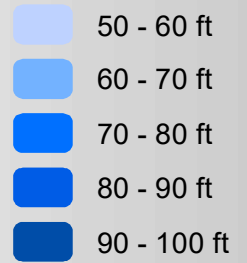


# Atlantic City Reef

(Map 1 of 3)

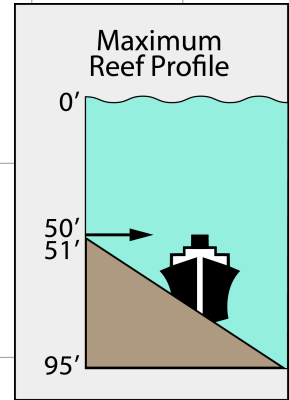
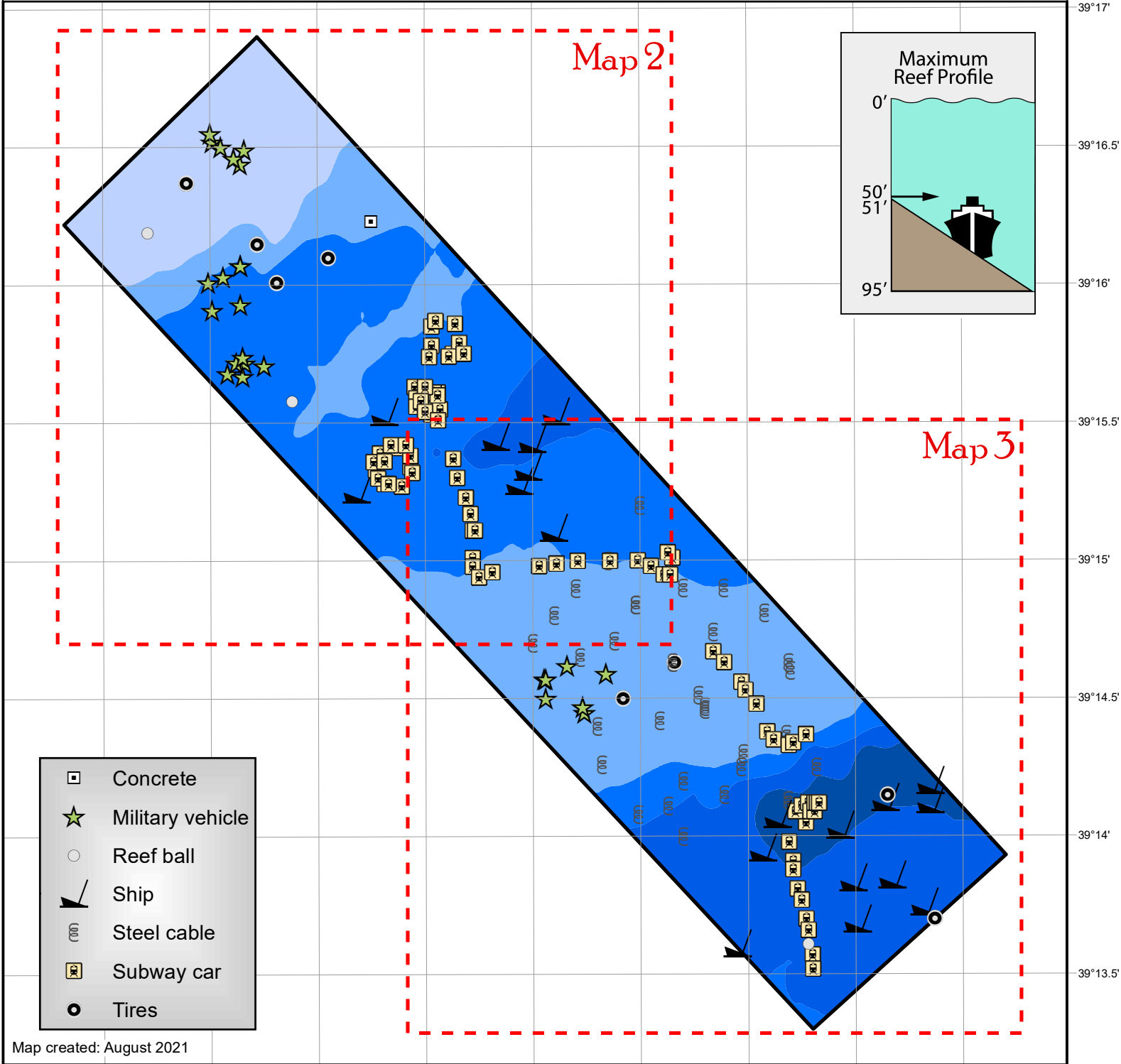
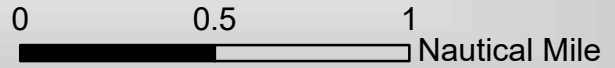


## Depth



Distance offshore --- 8.5 nm  
 Reef area ----- 5.1 sq mi  
 Depth range ----- 51-95 ft

**NOT FOR  
 NAVIGATIONAL  
 PURPOSES.**



- Concrete
- ★ Military vehicle
- Reef ball
- ▲ Ship
- (00) Steel cable
- ☐ Subway car
- Tires

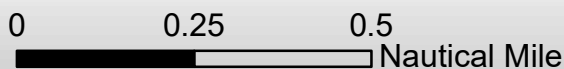
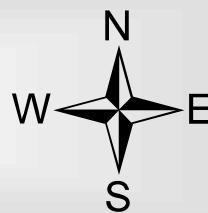
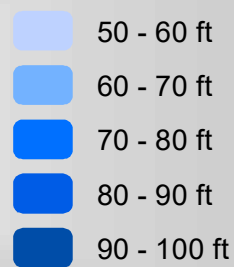
Map created: August 2021

-74°16'    -74°15.5'    -74°15'    -74°14.5'    -74°14'    -74°13.5'    -74°13'    -74°12.5'    -74°12'

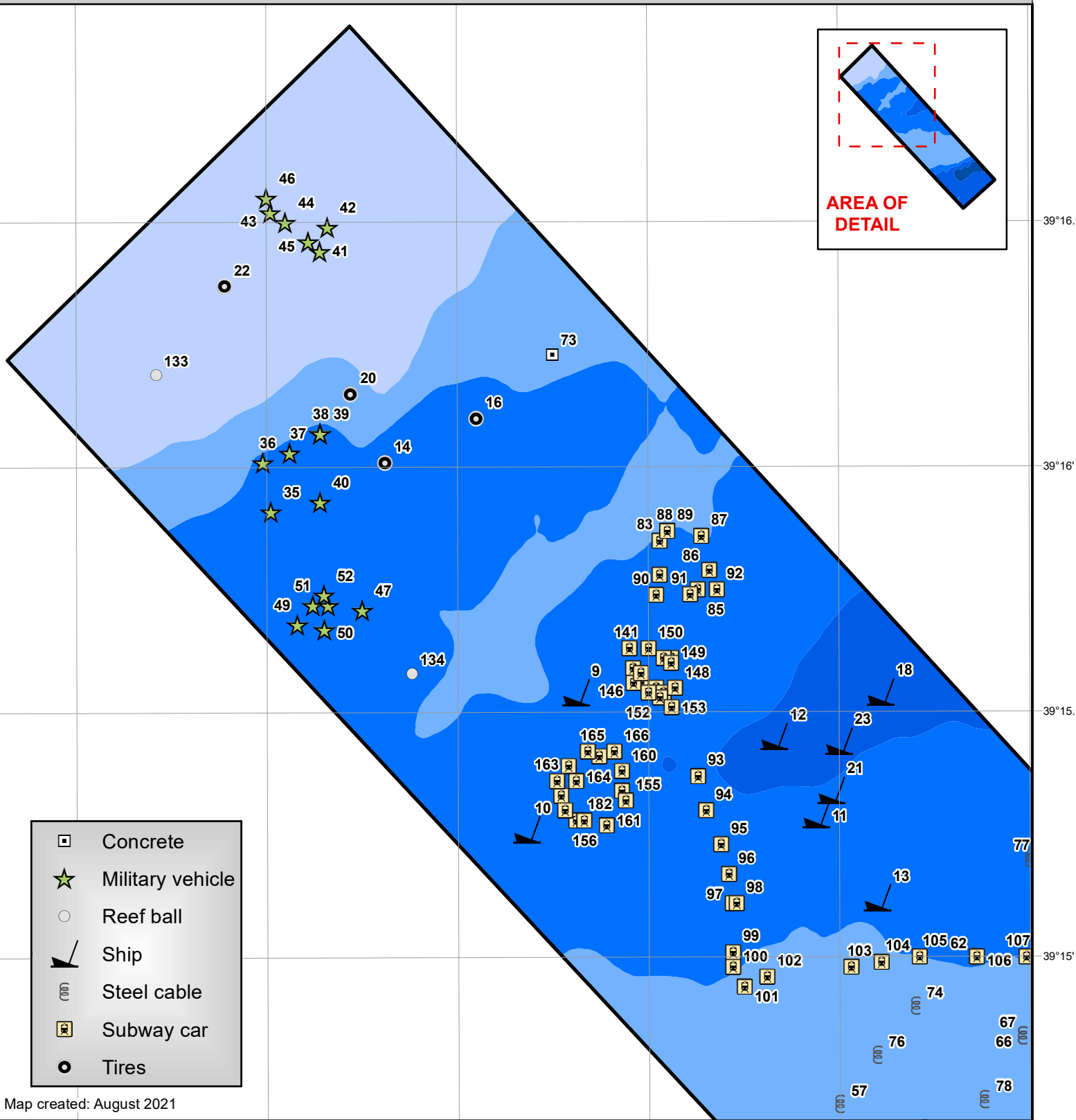
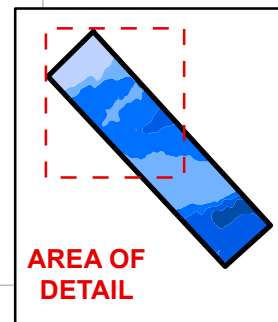
39°17'  
 39°16.5'  
 39°16'  
 39°15.5'  
 39°15'  
 39°14.5'  
 39°14'  
 39°13.5'

# Atlantic City Reef (Map 2 of 3)

## Depth



**NOT FOR  
NAVIGATIONAL  
PURPOSES.**



- Concrete
- ☆ Military vehicle
- Reef ball
- ▲ Ship
- ⊞ Steel cable
- ▣ Subway car
- Tires

Map created: August 2021

-74°16'

-74°15.5'

-74°15'

-74°14.5'

-74°14'

-74°13.5'

39°16.5'

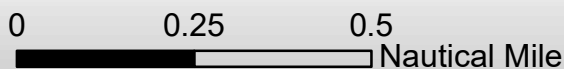
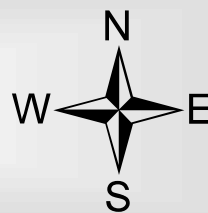
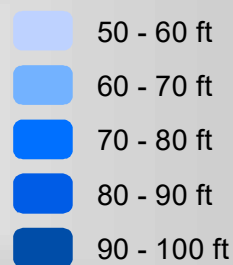
39°16'

39°15.5'

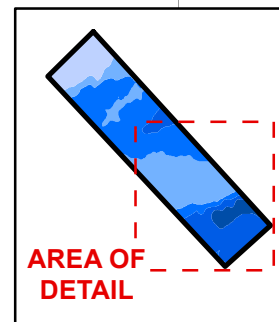
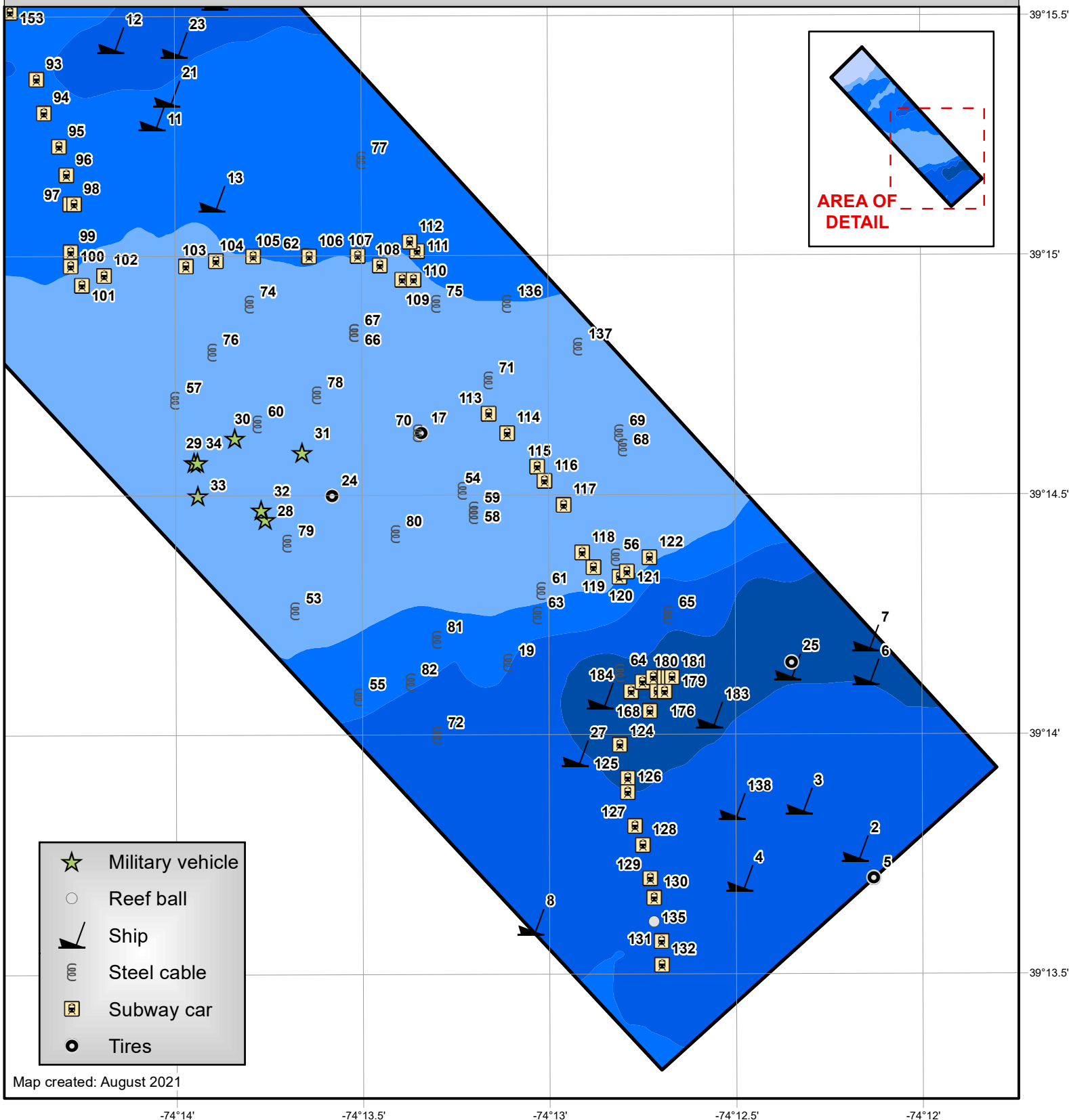
39°15'

# Atlantic City Reef (Map 3 of 3)

## Depth



**NOT FOR  
NAVIGATIONAL  
PURPOSES.**



- ★ Military vehicle
- Reef ball
- ↙ Ship
- ⊖ Steel cable
- ☑ Subway car
- Tires

Map created: August 2021

-74°14'

-74°13.5'

-74°13'

-74°12.5'

-74°12'

39°15.5'

39°15'

39°14.5'

39°14'

39°13.5'

# ATLANTIC CITY REEF

ID #	Name	Description	Sponsor	Date Deployed	Latitude	Longitude
2	Pauline Marie	165' Freighter - "Pauline Marie"	Seacoast Products, Inc.; Fisherman Magazine	3/29/1985	39 13.75998N	074 12.18000W
3	The American	125' Wood Schooner - "The American" (with 40 cu.yds. of concrete ballast)	Cold Spring Dock	6/3/1985	39 13.86000N	074 12.33000W
4	First Lady	93' Clam Dredge - "First Lady"	M&P Boat Inc.	7/6/1985	39 13.69998N	074 12.49002W
5	Tire Units	Tire units (x500) - ballasted	Ocean County Road Dept.	10/15/1985	39 13.69998N	074 12.13002W
6	Morania Abaco	265' Tanker - "Morania Abaco"	Morania Oil Co.; Army Reserves, Navy EOD	11/18/1985	39 14.13000N	074 12.15000W
7	Francis S. Bushey	247' Tanker - "Francis S. Bushey"	Spentonbush Red Star Co.	4/13/1986	39 14.20002N	074 12.15000W
8	NILS S	122' Clam Dredge - "Nils S"	Gifford Marine Enterprises; Ocean City Marlin and Tuna Club; Fish America Foundation	4/23/1989	39 13.60998N	074 13.05000W
9	A.C. WESCOAT	60' Deck Barge - "A.C. Wescoat"	A.C. Wescoat Co.; Atlantic County Party and Charter Boat Assoc.; Fish America Foundation	10/11/1989	39 15.54000N	074 14.68998W
10	VICKI-PAT	64' Clam Dredge - "Vicki-Pat"	Vicki-Pat Inc.	10/30/1989	39 15.25998N	074 14.82000W
11	TROY	90' Tugboat - "Troy"	Joe Williams; Ocean City Marlin and Tuna Club; Atlantic County Party and Charter Boat Assoc.	4/27/1990	39 15.28998N	074 14.05998W
12	Point Pub	110' Tugboat - "Point Pub" (formerly -"Carol Moran")	America Foundation; 1000 Fathom Club	7/17/1990	39 15.45000N	074 14.17002W
13	MARGARET NANCY	75' Clam Dredge - "Margaret Nancy"	Atlantic County Reef Society; Fish America Foundation; Crestwood Village Fishing Club; Bob Kelleher (sp)	10/30/1990	39 15.12000N	074 13.90002W
14	Tire Units	Tire units - (x250)	Atlantic County	5/23/1991	39 16.00998N	074 15.19002W
16	Tire Units	Tire units - (x350)	Atlantic County	6/29/1991	39 16.09998N	074 14.95002W
17	Tire Units	Tire units - (x325)	Atlantic County	8/13/1991	39 14.62998N	074 13.33998W
18	ADA ADELIA	65' Clam Dredge - "Ada Adelia"	Adelia Inc.; Captain Andy Applegate	10/11/1991	39 15.54000N	074 13.89000W
19	Spaghetti Pile Reef	129 mm Longline Cable - "Spaghetti Pile"	U.S. Navy; AT&T Longlines	11/21/1991	39 14.14998N	074 13.11000W
20	Tire Units	Tire units - (x700)	Atlantic County	5/30/1992	39 16.15002N	074 15.28002W
21	BEACH HAVEN	125' Clam Dredge - "Beach Haven"	Gifford Marine Co.; Fish America Foundation; Artificial Reef Assoc.	8/6/1992	39 15.34002N	074 14.02002W
22	Tire Units	Tire units - (x600)	Atlantic County	9/20/1992	39 16.36998N	074 15.61002W
23	BOSTON	128' Lightship - "Boston"	Artificial Reef Assoc. (ARA); Atlantic City Seafood Festival; Atlantic County Party and Charter Boat Assoc.	1/28/1994	39 15.43998N	074 13.99998W
24	Tire Units	Tire units - (x1200)	Atlantic County	3/13/1994	39 14.50002N	074 13.57998W
25	BLUE CROWN	205' Freighter - "Blue Crown"	Coors Brewing Co.; U.S. Army; Artificial Reef Assoc.; Sportfish Fund; U.S. Customs Service	6/10/1994	39 14.14002N	074 12.36000W

# ATLANTIC CITY REEF

ID #	Name	Description	Sponsor	Date Deployed	Latitude	Longitude
26	Tire Units	Tire units - (x300)	Carbon Service Corp.	6/10/1994	39 14.14998N	074 12.34998W
27	BIG MAMA	103' Tugboat - "Big Mama"	Hays Tug and Launch; GDF; Jersey Fresh Seafood Festival	6/9/1995	39 13.96002N	074 12.93000W
28	Military Vehicle	M-551 Sheridan Light Tank	Reef-Ex; NJ Army National Guard	9/19/1995	39 14.44998N	074 13.75998W
29	Military Vehicle	M-60 Patton Main Battle Tank (MBT)	Reef-Ex; NJ Army National Guard	9/19/1995	39 14.56998N	074 13.95000W
30	Military Vehicle	M-60 Patton Main Battle Tank (MBT)	Reef-Ex; NJ Army National Guard	9/19/1995	39 14.62002N	074 13.84002W
31	Military Vehicle	M-551 Sheridan Light Tank	Reef-Ex; NJ Army National Guard	9/19/1995	39 14.59002N	074 13.66002W
32	Military Vehicle	M-551 Sheridan Light Tank	Reef-Ex; NJ Army National Guard	9/19/1995	39 14.47002N	074 13.77000W
33	Military Vehicle	M-551 Sheridan Light Tank	Reef-Ex; NJ Army National Guard	9/19/1995	39 14.50002N	074 13.93998W
34	Military Vehicle	M-551 Sheridan Light Tank	Reef-Ex; NJ Army National Guard	9/19/1995	39 14.56998N	074 13.93998W
35	Military Vehicle	M-60 Patton Main Battle Tank (MBT)	Reef-Ex; NJ Army National Guard	9/19/1995	39 15.91002N	074 15.49002W
36	Military Vehicle	M-551 Sheridan Light Tank	Reef-Ex; NJ Army National Guard	9/19/1995	39 16.00998N	074 15.51000W
37	Military Vehicle	M-551 Sheridan Light Tank	Reef-Ex; NJ Army National Guard	9/19/1995	39 16.03002N	074 15.43998W
38	JR's Tank Reef	M-551 Sheridan Light Tank	PECO Energy; Peach Bottom Dive Team	9/19/1995	39 16.06998N	074 15.36000W
39	Military Vehicle	M-113 Armored Personnel Carrier (APC)	Reef-Ex; NJ Army National Guard	9/19/1995	39 16.06998N	074 15.36000W
40	N.J. State Aquarium Reef	M-60 Patton Main Battle Tank (MBT)	Reef-Ex; NJ Army National Guard; NJ State Aquarium	9/19/1995	39 15.93000N	074 15.36000W
41	Phil Weintraub Memorial Reef	M-578 Light Recovery Vehicle	NJ Army National Guard; Family & Friends	8/10/1999	39 16.44000N	074 15.36000W
42	Phil Weintraub Memorial Reef	M-578 Light Recovery Vehicle	NJ Army National Guard; Family & Friends	8/10/1999	39 16.48998N	074 15.34002W
43	Phil Weintraub Memorial Reef	M-578 Light Recovery Vehicle	NJ Army National Guard; Family & Friends	8/10/1999	39 16.51998N	074 15.49002W
44	Phil Weintraub Memorial Reef	M-578 Light Recovery Vehicle	NJ Army National Guard; Family & Friends	8/10/1999	39 16.50000N	074 15.45000W
45	Phil Weintraub Memorial Reef	M-578 Light Recovery Vehicle	NJ Army National Guard; Family & Friends	8/10/1999	39 16.45998N	074 15.39000W
46	Military Vehicle	M-113 Armored Personnel Carrier (APC)	NJ Army National Guard; Family & Friends	8/10/1999	39 16.54998N	074 15.49998W
47	Jospeh J. Palladino Reef	M-60 Patton Main Battle Tank (MBT)	NJ Army National Guard; Family & Friends	8/12/1999	39 15.70998N	074 15.25002W
48	Jospeh J. Palladino Reef	M-60 Patton Main Battle Tank (MBT)	NJ Army National Guard; Family & Friends	8/12/1999	39 15.72000N	074 15.34002W
49	Jospeh J. Palladino Reef	M-578 Light Recovery Vehicle	NJ Army National Guard; Family & Friends	8/12/1999	39 15.67998N	074 15.42000W
50	Jospeh J. Palladino Reef	M-578 Light Recovery Vehicle	NJ Army National Guard; Family & Friends	8/12/1999	39 15.67002N	074 15.34998W
51	Jospeh J. Palladino Reef	M-578 Light Recovery Vehicle	NJ Army National Guard; Family & Friends	8/12/1999	39 15.72000N	074 15.37998W

# ATLANTIC CITY REEF

ID #	Name	Description	Sponsor	Date Deployed	Latitude	Longitude
			NJ Army National Guard; Family &			
52	Jospeh J. Palladino Reef	M-578 Light Recovery Vehicle	Friends	8/12/1999	39 15.73998N	074 15.34998W
53	Cable	7.5 km Cable	AT&T	2/1/2000	39 14.26002N	074 13.68000W
54	Cable	12.9 km Cable	AT&T	2/4/2000	39 14.50998N	074 13.23000W
55	Cable	20.0 km Cable	AT&T	2/7/2000	39 14.08002N	074 13.51002W
56	Cable	13.6 km Cable	AT&T	2/10/2000	39 14.37000N	074 12.82002W
57	Cable	14.8 km Cable	AT&T	2/15/2000	39 14.70000N	074 13.99998W
58	Cable	13.0 km Cable	AT&T	2/22/2000	39 14.46000N	074 13.20000W
59	Cable	12.0 km Cable	AT&T	2/22/2000	39 14.47002N	074 13.20000W
60	Cable	10.0 km Cable	AT&T	2/26/2000	39 14.65002N	074 13.78002W
61	Cable	6.0 km Cable	AT&T	5/1/2000	39 14.29998N	074 13.02000W
62	Cable	11.7 km Cable	AT&T	5/6/2000	39 15.00000N	074 13.65000W
63	Cable	9.0 km Cable	AT&T	5/8/2000	39 14.25000N	074 13.03002W
64	Cable	7.9 km Cable	AT&T	5/12/2000	39 14.13000N	074 12.81000W
65	Cable	8.0 km Cable	AT&T	5/14/2000	39 14.25000N	074 12.67998W
66	Cable	5.7 km Cable	AT&T	5/15/2000	39 14.83998N	074 13.51998W
67	Cable	3.9 km Cable	AT&T	5/16/2000	39 14.83998N	074 13.51998W
68	Cable	4.4 km Cable	AT&T	5/26/2000	39 14.59998N	074 12.79998W
69	Cable	3.3 km Cable	AT&T	5/28/2000	39 14.62998N	074 12.81000W
70	Cable	1.0 km Cable	Global Marine Systems	9/19/2000	39 14.62998N	074 13.35000W
71	Cable	9.5 km Cable	Kigoria	10/25/2000	39 14.74002N	074 13.15998W
72	Cable	7.9 km Cable	International Telecom	11/23/2000	39 13.99998N	074 13.30002W
73	Applejack Reef	Concrete pipes (x14)	Capt. Andy Applegate	6/12/2001	39 16.23000N	074 14.74998W
74	Cable	4.5 km Cable	U.S. Navy	2/24/2001	39 14.89998N	074 13.80000W
75	Cable	4.1 km Cable	U.S. Navy	2/24/2001	39 14.89998N	074 13.30002W
76	Cable	5.4 km Cable	U.S. Navy	2/24/2001	39 14.80002N	074 13.90002W
77	Cable	10.4 km Cable	U.S. Navy	10/30/2002	39 15.19998N	074 13.50000W
78	Cable	9.0 km Cable	U.S. Navy	10/30/2002	39 14.71002N	074 13.62000W
79	Cable	9.0 km Cable	U.S. Navy	10/30/2002	39 14.40000N	074 13.69998W
80	Cable	9.0 km Cable	U.S. Navy	10/30/2002	39 14.41998N	074 13.41000W
81	Cable	9.0 km Cable	U.S. Navy	10/30/2002	39 14.20002N	074 13.30002W
82	Cable	9.0 km Cable	U.S. Navy	10/30/2002	39 14.11002N	074 13.36998W
83	Subway Car	Subway Car (Redbird XI)	NYC Transit Authority	7/25/2003	39 15.85002N	074 14.47002W
			NYC Transit Authority; Recreational			
84	Recreational Fishing Alliance Redbird Reef	Subway Car (Redbird XI)	Fishing Alliance	7/25/2003	39 15.78000N	074 14.47002W
85	Subway Car	Subway Car (Redbird XI)	NYC Transit Authority	7/25/2003	39 15.75000N	074 14.37000W
86	Subway Car	Subway Car (Redbird XI)	NYC Transit Authority	7/25/2003	39 15.79002N	074 14.34000W
87	Subway Car	Subway Car (Redbird XI)	NYC Transit Authority	7/25/2003	39 15.85998N	074 14.35998W
88	Subway Car	Subway Car (Redbird XI)	NYC Transit Authority	7/25/2003	39 15.87000N	074 14.44998W
89	Subway Car	Subway Car (Redbird XI)	NYC Transit Authority	7/25/2003	39 15.87000N	074 14.44998W

# ATLANTIC CITY REEF

ID #	Name	Description	Sponsor	Date	Latitude	Longitude
				Deployed		
90	Subway Car	Subway Car (Redbird XI)	NYC Transit Authority	7/25/2003	39 15.73998N	074 14.47998W
91	Subway Car	Subway Car (Redbird XI)	NYC Transit Authority	7/25/2003	39 15.73998N	074 14.38998W
92	Subway Car	Subway Car (Redbird XI)	NYC Transit Authority	7/25/2003	39 15.75000N	074 14.32002W
93	Subway Car	Subway Car (Redbird XI)	NYC Transit Authority	7/25/2003	39 15.37002N	074 14.37000W
94	Subway Car	Subway Car (Redbird XI)	NYC Transit Authority	7/25/2003	39 15.30000N	074 14.35002W
95	Subway Car	Subway Car (Redbird XI)	NYC Transit Authority	7/25/2003	39 15.22998N	074 14.31000W
96	Subway Car	Subway Car (Redbird XI)	NYC Transit Authority	7/25/2003	39 15.16998N	074 14.29002W
97	Subway Car	Subway Car (Redbird XII)	NYC Transit Authority	7/25/2003	39 15.10998N	074 14.28000W
98	Subway Car	Subway Car (Redbird XII)	NYC Transit Authority	7/25/2003	39 15.10998N	074 14.26998W
99	Subway Car	Subway Car (Redbird XII)	NYC Transit Authority	7/25/2003	39 15.01002N	074 14.28000W
100	Subway Car	Subway Car (Redbird XII)	NYC Transit Authority	7/25/2003	39 14.98002N	074 14.28000W
101	Subway Car	Subway Car (Redbird XII)	NYC Transit Authority	7/25/2003	39 14.94000N	074 14.25000W
102	Subway Car	Subway Car (Redbird XII)	NYC Transit Authority	7/25/2003	39 14.95998N	074 14.19000W
103	Subway Car	Subway Car (Redbird XII)	NYC Transit Authority	7/25/2003	39 14.98002N	074 13.96998W
104	Subway Car	Subway Car (Redbird XII)	NYC Transit Authority	7/25/2003	39 14.98998N	074 13.89000W
105	Subway Car	Subway Car (Redbird XII)	NYC Transit Authority	7/25/2003	39 15.00000N	074 13.78998W
106	Subway Car	Subway Car (Redbird XIII)	NYC Transit Authority	7/25/2003	39 15.00000N	074 13.63998W
107	Subway Car	Subway Car (Redbird XIII)	NYC Transit Authority	7/25/2003	39 15.00000N	074 13.51002W
108	Subway Car	Subway Car (Redbird XIII)	NYC Transit Authority	7/25/2003	39 14.98002N	074 13.45002W
109	Subway Car	Subway Car (Redbird XIII)	NYC Transit Authority	7/25/2003	39 14.95002N	074 13.39002W
110	Subway Car	Subway Car (Redbird XIII)	NYC Transit Authority	7/25/2003	39 14.95002N	074 13.36002W
111	Subway Car	Subway Car (Redbird XIII)	NYC Transit Authority	7/25/2003	39 15.01002N	074 13.35000W
112	Subway Car	Subway Car (Redbird XIII)	NYC Transit Authority	7/25/2003	39 15.03000N	074 13.36998W
113	Subway Car	Subway Car (Redbird XIII)	NYC Transit Authority	7/25/2003	39 14.67000N	074 13.15998W
114	Subway Car	Subway Car (Redbird XIII)	NYC Transit Authority	7/25/2003	39 14.62998N	074 13.11000W
115	Subway Car	Subway Car (Redbird XIII)	NYC Transit Authority	7/25/2003	39 14.56002N	074 13.03002W
116	Subway Car	Subway Car (Redbird XIII)	NYC Transit Authority	7/25/2003	39 14.53002N	074 13.00998W
117	Subway Car	Subway Car (Redbird XIII)	NYC Transit Authority	7/25/2003	39 14.47998N	074 12.96000W
118	Subway Car	Subway Car (Redbird XIV)	NYC Transit Authority	7/25/2003	39 14.38002N	074 12.91002W
119	Subway Car	Subway Car (Redbird XIV)	NYC Transit Authority	7/25/2003	39 14.35002N	074 12.88002W
120	Subway Car	Subway Car (Redbird XIV)	NYC Transit Authority	7/25/2003	39 14.32998N	074 12.81000W
121	Subway Car	Subway Car (Redbird XIV)	NYC Transit Authority	7/25/2003	39 14.34000N	074 12.79002W
122	Subway Car	Subway Car (Redbird XIV)	NYC Transit Authority	7/25/2003	39 14.37000N	074 12.73002W
124	Subway Car	Subway Car (Redbird XIV)	NYC Transit Authority	7/25/2003	39 13.98000N	074 12.81000W
125	Subway Car	Subway Car (Redbird XIV)	NYC Transit Authority	7/25/2003	39 13.90998N	074 12.79002W
126	Subway Car	Subway Car (Redbird XIV)	NYC Transit Authority	7/25/2003	39 13.87998N	074 12.79002W
127	Subway Car	Subway Car (Redbird XIV)	NYC Transit Authority	7/25/2003	39 13.81002N	074 12.76998W
128	Subway Car	Subway Car (Redbird XIV)	NYC Transit Authority	7/25/2003	39 13.77000N	074 12.75000W
129	Subway Car	Subway Car (Redbird XV)	NYC Transit Authority	7/25/2003	39 13.69998N	074 12.73002W
130	Subway Car	Subway Car (Redbird XV)	NYC Transit Authority	7/25/2003	39 13.66002N	074 12.72000W

# ATLANTIC CITY REEF

ID #	Name	Description	Sponsor	Date Deployed	Latitude	Longitude
131	Subway Car	Subway Car (Redbird XV)	NYC Transit Authority	7/25/2003	39 13.57002N	074 12.70002W
132	Subway Car	Subway Car (Redbird XV)	NYC Transit Authority	7/25/2003	39 13.51998N	074 12.70002W
133	Jersey Fresh Reef	100 Reef Balls	New Jersey Fresh Seafood Festival	11/22/2003	39 16.18998N	074 15.79002W
134	Gus Picone Reef I	50 Reef Balls	Friends of Gus	11/22/2003	39 15.58002N	074 15.12000W
135	Gus Picone Reef II	50 Reef Balls	Friends of Gus	11/22/2003	39 13.60998N	074 12.72000W
136	Cable	Cable - 25 km	U.S. Navy	4/28/2005	39 14.89998N	074 13.11000W
137	Cable	Cable - 25 km	U.S. Navy	4/28/2005	39 14.80998N	074 12.91998W
138	Captain Applegate	170' Tanker - "Jet Trader" (Renamed - "Captain Applegate")	Cleanwater of NY	9/2/2005	39 13.84998N	074 12.51000W
139	Subway Car	Stainless Steel Subway Car - (55'x9'x11')	Weeks Marine - NYC Transit Authority	4/3/2008	39 15.55002N	074 14.47998W
140	Subway Car	Stainless Steel Subway Car - (55'x9'x11')	Weeks Marine - NYC Transit Authority	4/3/2008	39 15.61002N	074 14.44002W
141	Subway Car	Stainless Steel Subway Car - (55'x9'x11')	Weeks Marine - NYC Transit Authority	4/3/2008	39 15.63000N	074 14.55000W
142	Subway Car	Stainless Steel Subway Car - (55'x9'x11')	Weeks Marine - NYC Transit Authority	4/3/2008	39 15.55998N	074 14.52000W
143	Subway Car	Stainless Steel Subway Car - (55'x9'x11')	Weeks Marine - NYC Transit Authority	4/3/2008	39 15.54000N	074 14.46000W
144	Subway Car	Stainless Steel Subway Car - (55'x9'x11')	Weeks Marine - NYC Transit Authority	4/3/2008	39 15.61002N	074 14.46000W
145	Subway Car	Stainless Steel Subway Car - (55'x9'x11')	Weeks Marine - NYC Transit Authority	4/3/2008	39 15.58998N	074 14.53998W
146	Subway Car	Stainless Steel Subway Car - (55'x9'x11')	Weeks Marine - NYC Transit Authority	4/3/2008	39 15.55998N	074 14.53998W
147	Subway Car	Stainless Steel Subway Car - (55'x9'x11')	Weeks Marine - NYC Transit Authority	4/3/2008	39 15.52998N	074 14.47002W
148	Subway Car	Stainless Steel Subway Car - (55'x9'x11')	Weeks Marine - NYC Transit Authority	4/3/2008	39 15.55002N	074 14.43000W
149	Subway Car	Stainless Steel Subway Car - (55'x9'x11')	Weeks Marine - NYC Transit Authority	4/3/2008	39 15.60000N	074 14.44002W
150	Subway Car	Stainless Steel Subway Car - (55'x9'x11')	Weeks Marine - NYC Transit Authority	4/3/2008	39 15.63000N	074 14.50002W
151	Subway Car	Stainless Steel Subway Car - (55'x9'x11')	Weeks Marine - NYC Transit Authority	4/3/2008	39 15.58002N	074 14.52000W
152	Subway Car	Stainless Steel Subway Car - (55'x9'x11')	Weeks Marine - NYC Transit Authority	4/3/2008	39 15.54000N	074 14.50002W
153	Subway Car	Stainless Steel Subway Car - (55'x9'x11')	Weeks Marine - NYC Transit Authority	4/3/2008	39 15.51000N	074 14.44002W
154	Subway Car	Stainless Steel Subway Car - (55'x9'x11')	Weeks Marine - NYC Transit Authority	4/3/2008	39 15.34002N	074 14.56998W
155	Subway Car	Stainless Steel Subway Car - (55'x9'x11')	Weeks Marine - NYC Transit Authority	4/3/2008	39 15.31998N	074 14.56002W
156	Subway Car	Stainless Steel Subway Car - (55'x9'x11')	Weeks Marine - NYC Transit Authority	4/3/2008	39 15.28002N	074 14.68998W
157	Subway Car	Stainless Steel Subway Car - (55'x9'x11')	Weeks Marine - NYC Transit Authority	4/3/2008	39 15.33000N	074 14.73000W
158	Subway Car	Stainless Steel Subway Car - (55'x9'x11')	Weeks Marine - NYC Transit Authority	4/3/2008	39 15.39000N	074 14.71002W
159	Subway Car	Stainless Steel Subway Car - (55'x9'x11')	Weeks Marine - NYC Transit Authority	4/3/2008	39 15.40998N	074 14.62998W
160	Subway Car	Stainless Steel Subway Car - (55'x9'x11')	Weeks Marine - NYC Transit Authority	4/3/2008	39 15.37998N	074 14.56998W
161	Subway Car	Stainless Steel Subway Car - (55'x9'x11')	Weeks Marine - NYC Transit Authority	4/3/2008	39 15.27000N	074 14.61000W
162	Subway Car	Stainless Steel Subway Car - (55'x9'x11')	Weeks Marine - NYC Transit Authority	4/3/2008	39 15.30000N	074 14.71998W
163	Subway Car	Stainless Steel Subway Car - (55'x9'x11')	Weeks Marine - NYC Transit Authority	4/3/2008	39 15.36000N	074 14.74002W
164	Subway Car	Stainless Steel Subway Car - (55'x9'x11')	Weeks Marine - NYC Transit Authority	4/3/2008	39 15.36000N	074 14.68998W
165	Subway Car	Stainless Steel Subway Car - (55'x9'x11')	Weeks Marine - NYC Transit Authority	4/3/2008	39 15.42000N	074 14.65998W
166	Subway Car	Stainless Steel Subway Car - (55'x9'x11')	Weeks Marine - NYC Transit Authority	4/3/2008	39 15.42000N	074 14.59002W
167	Subway Car	Stainless Steel Subway Car - (55'x9'x11')	Weeks Marine - NYC Transit Authority	4/3/2008	39 14.05002N	074 12.73002W
168	Subway Car	Stainless Steel Subway Car - (55'x9'x11')	Weeks Marine - NYC Transit Authority	4/3/2008	39 14.08998N	074 12.78000W
169	Subway Car	Stainless Steel Subway Car - (55'x9'x11')	Weeks Marine - NYC Transit Authority	4/3/2008	39 14.11002N	074 12.75000W



## ATLANTIC CITY REEF

ID #	Name	Description	Sponsor	Date Deployed	Latitude	Longitude
170	Subway Car	Stainless Steel Subway Car - (55'x9'x11')	Weeks Marine - NYC Transit Authority	4/3/2008	39 14.11998N	074 12.70002W
171	Subway Car	Stainless Steel Subway Car - (55'x9'x11')	Weeks Marine - NYC Transit Authority	4/3/2008	39 14.11998N	074 12.67998W
172	Subway Car	Stainless Steel Subway Car - (55'x9'x11')	Weeks Marine - NYC Transit Authority	4/3/2008	39 14.11002N	074 12.69000W
173	Subway Car	Stainless Steel Subway Car - (55'x9'x11')	Weeks Marine - NYC Transit Authority	4/3/2008	39 14.11998N	074 12.70998W
174	Subway Car	Stainless Steel Subway Car - (55'x9'x11')	Weeks Marine - NYC Transit Authority	4/3/2008	39 14.11998N	074 12.72000W
175	Subway Car	Stainless Steel Subway Car - (55'x9'x11')	Weeks Marine - NYC Transit Authority	4/3/2008	39 14.08998N	074 12.70998W
176	Subway Car	Stainless Steel Subway Car - (55'x9'x11')	Weeks Marine - NYC Transit Authority	4/3/2008	39 14.08998N	074 12.69000W
177	Subway Car	Stainless Steel Subway Car - (55'x9'x11')	Weeks Marine - NYC Transit Authority	4/3/2008	39 14.11998N	074 12.69000W
178	Subway Car	Stainless Steel Subway Car - (55'x9'x11')	Weeks Marine - NYC Transit Authority	4/3/2008	39 14.11998N	074 12.69000W
179	Subway Car	Stainless Steel Subway Car - (55'x9'x11')	Weeks Marine - NYC Transit Authority	4/3/2008	39 14.11998N	074 12.67002W
180	Subway Car	Stainless Steel Subway Car - (55'x9'x11')	Weeks Marine - NYC Transit Authority	4/3/2008	39 14.11998N	074 12.67998W
181	Subway Car	Stainless Steel Subway Car - (55'x9'x11')	Weeks Marine - NYC Transit Authority	4/3/2008	39 14.11998N	074 12.67002W
182	Subway Car	Stainless Steel Subway Car - (55'x9'x11')	Weeks Marine - NYC Transit Authority	4/3/2008	39 15.28002N	074 14.67000W
183	Richard Reina Reef	90' Tugboat - "Tobacco Pointe"	Ann E. Clark Foundation; SportfishingFund.org	6/16/2016	39 14.04000N	074 12.57000W
184	William Kane Wreck	Caisson Gate	Ann E. Clark Foundation; SportfishingFund.org	7/27/2019	39 14.08002N	074 12.86202W