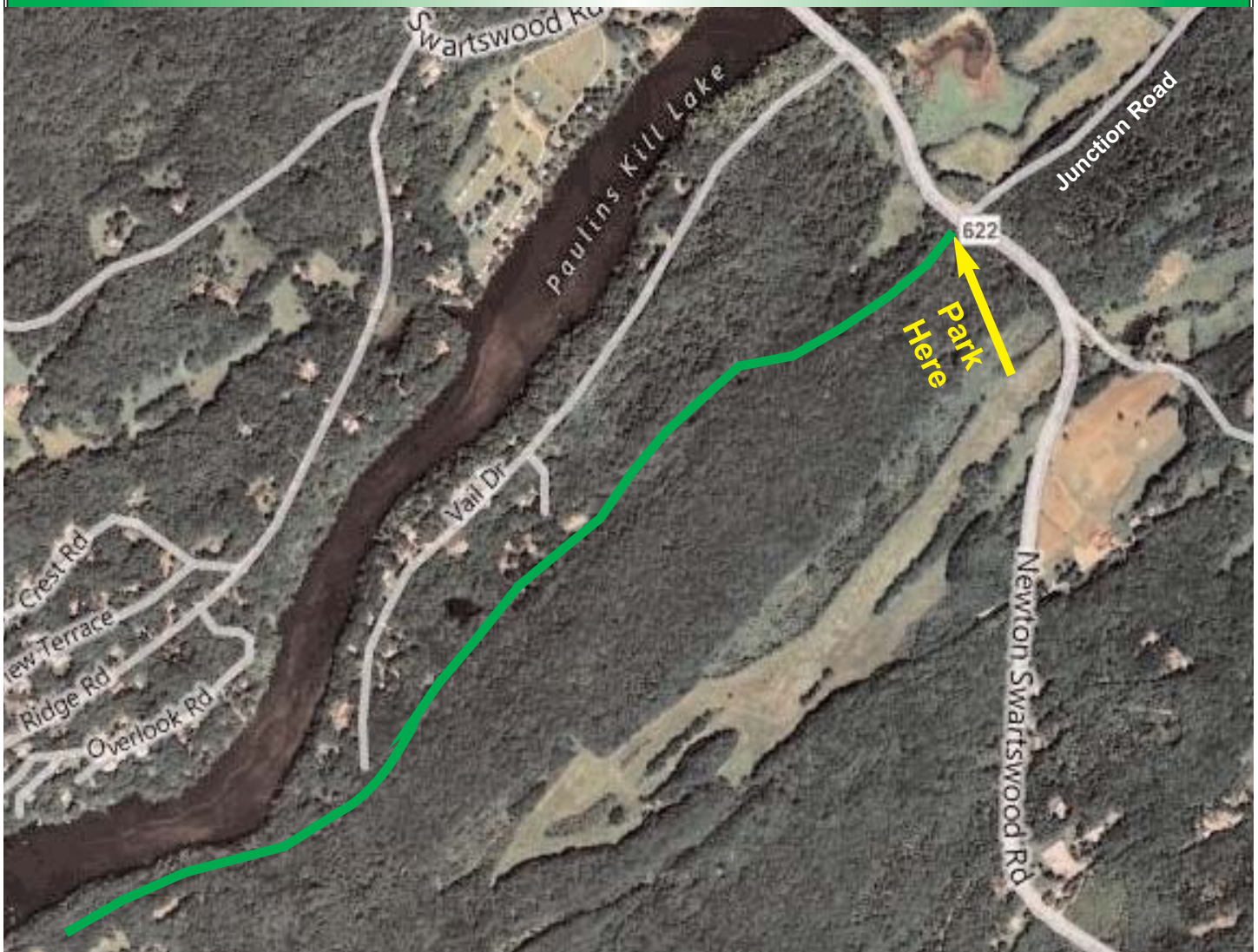


Paulinskill River Wildlife Management Area Tuesday, July 12, 2011 at 9:30 am



Trail Highlights

This is a very easy railtrail hike along the Paulinskill Valley Trail. Total time is approximately 3.5 hours. Bring binoculars, bug spray, ample water and an energy snack.

Participants will have the opportunity to try an exciting activity on this hike called geocaching. Geocaching is a real-world outdoor treasure hunting game, where players try to locate hidden containers called geocaches using GPS enabled devices.

If you would like to participate in this activity you will first need to download the free geocaching application onto a GPS enabled wireless device such as an iPhone, Android or Windows Phone 7, and then bring that device with you on the hike. The application can be found at

<http://www.geocaching.com/live/default.aspx>

For more information about the Wildlife Management Area System visit www.njfishandwildlife.com/wmas.htm. Wildlife Management Area maps are available on the site in PDF format.