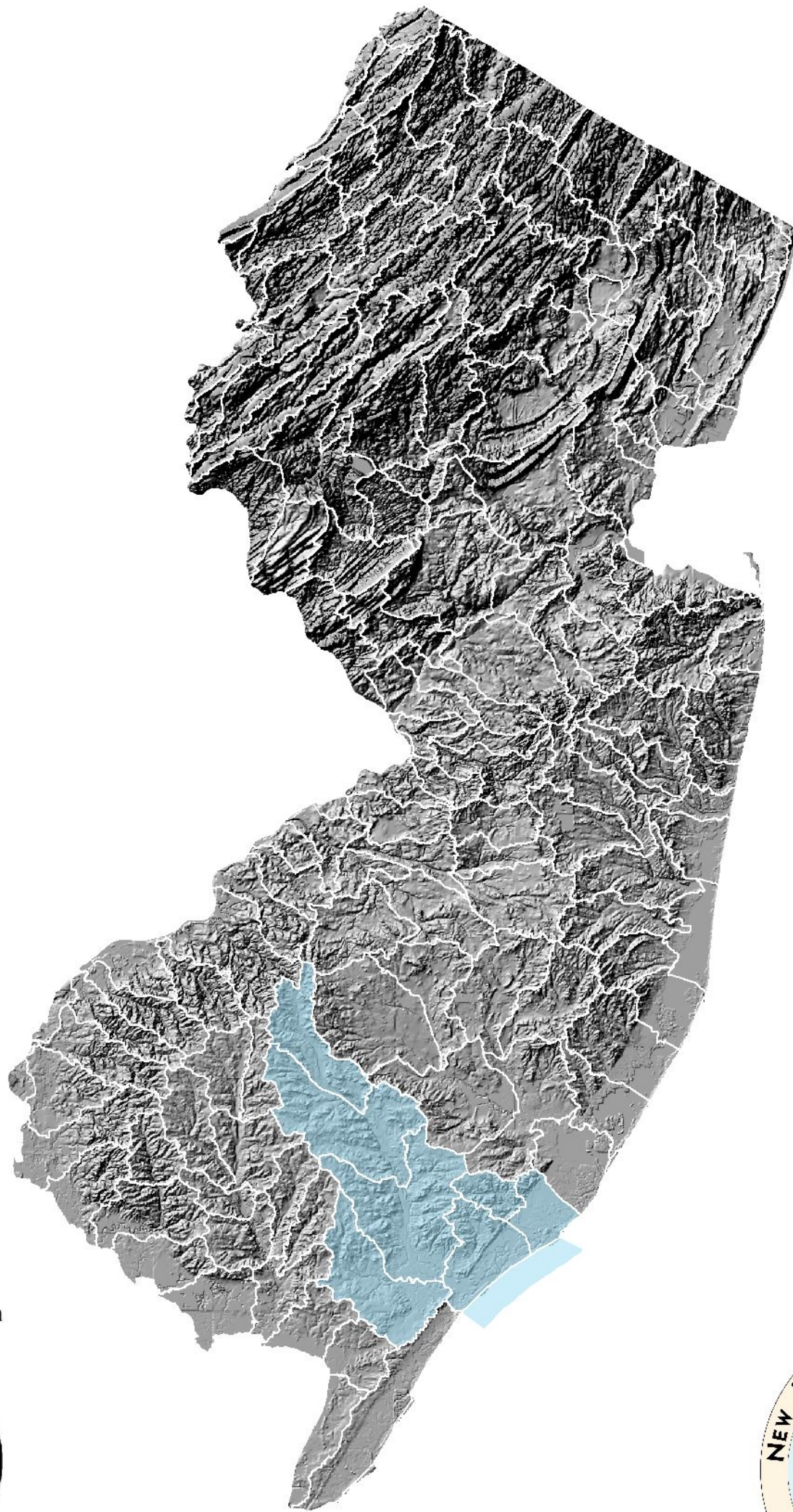


# New Jersey Water Withdrawals, Uses, Transfers, and Discharges by HUC11, 1990 to 1999

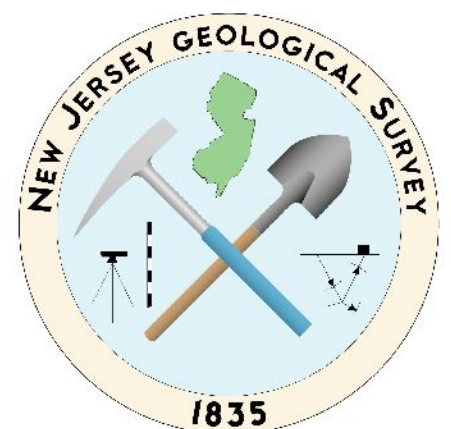
## Appendix 15: HUC11 Tables, Figures and Maps WMA 15 - Great Egg Harbor



Let's protect our earth

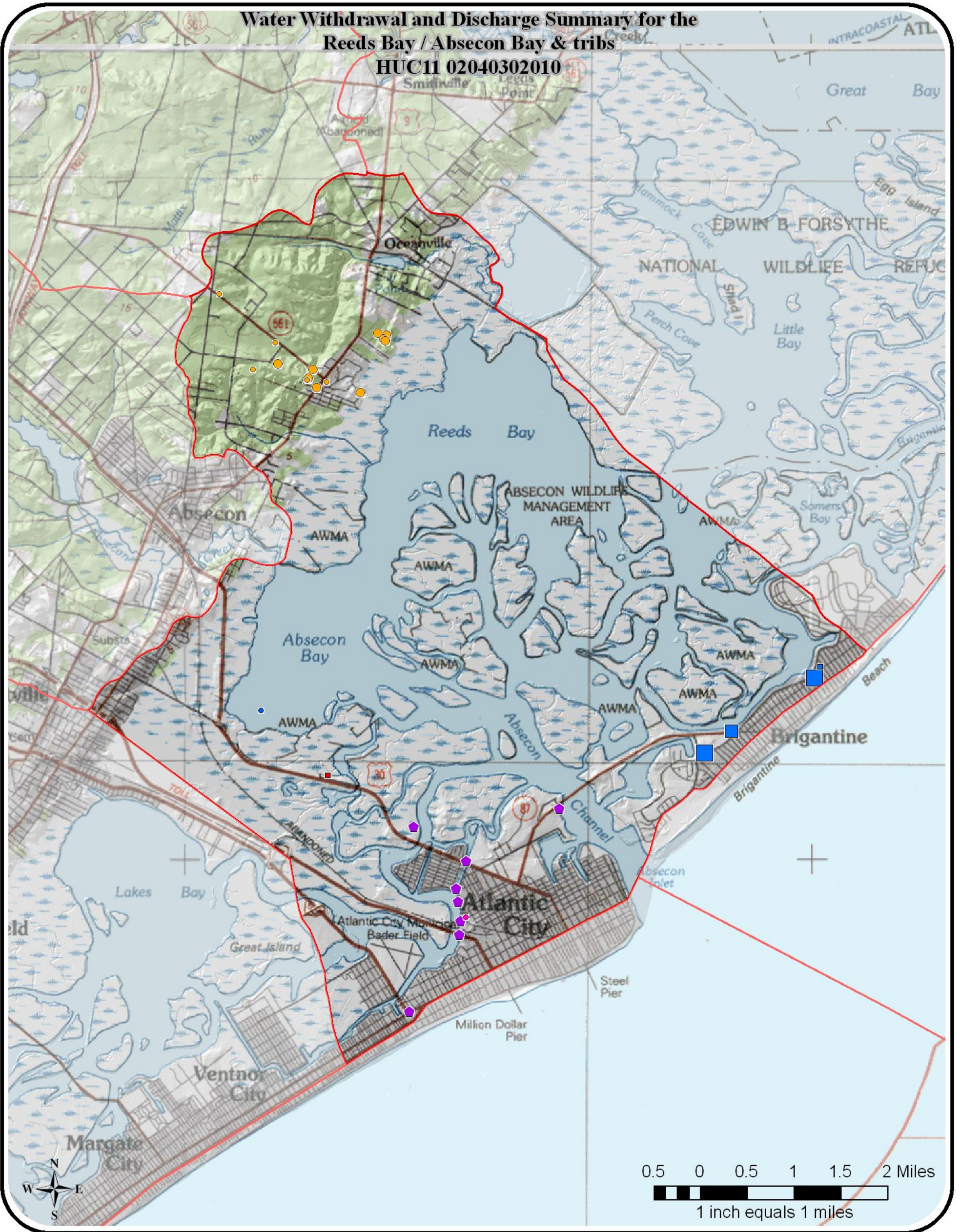


NEW JERSEY DEPARTMENT  
OF ENVIRONMENTAL PROTECTION





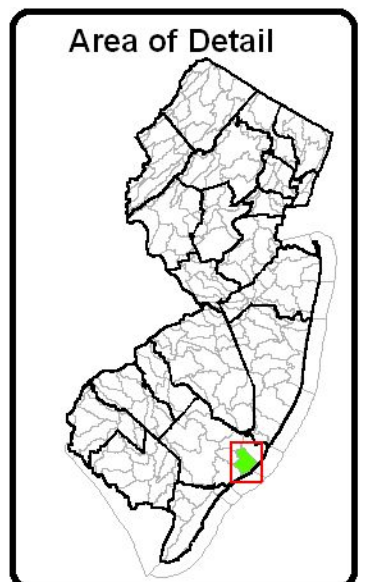
**Water Withdrawal and Discharge Summary for the  
Reeds Bay / Absecon Bay & tribs  
HUC11 02040302010**



Key for Discharge Data		
1999 Treated Effluent Discharge		
0 - 50	MGY	◆
50 - 100	MGY	◆
100 - 500	MGY	◆
> 500	MGY	◆
Other Permitted Discharge		◆

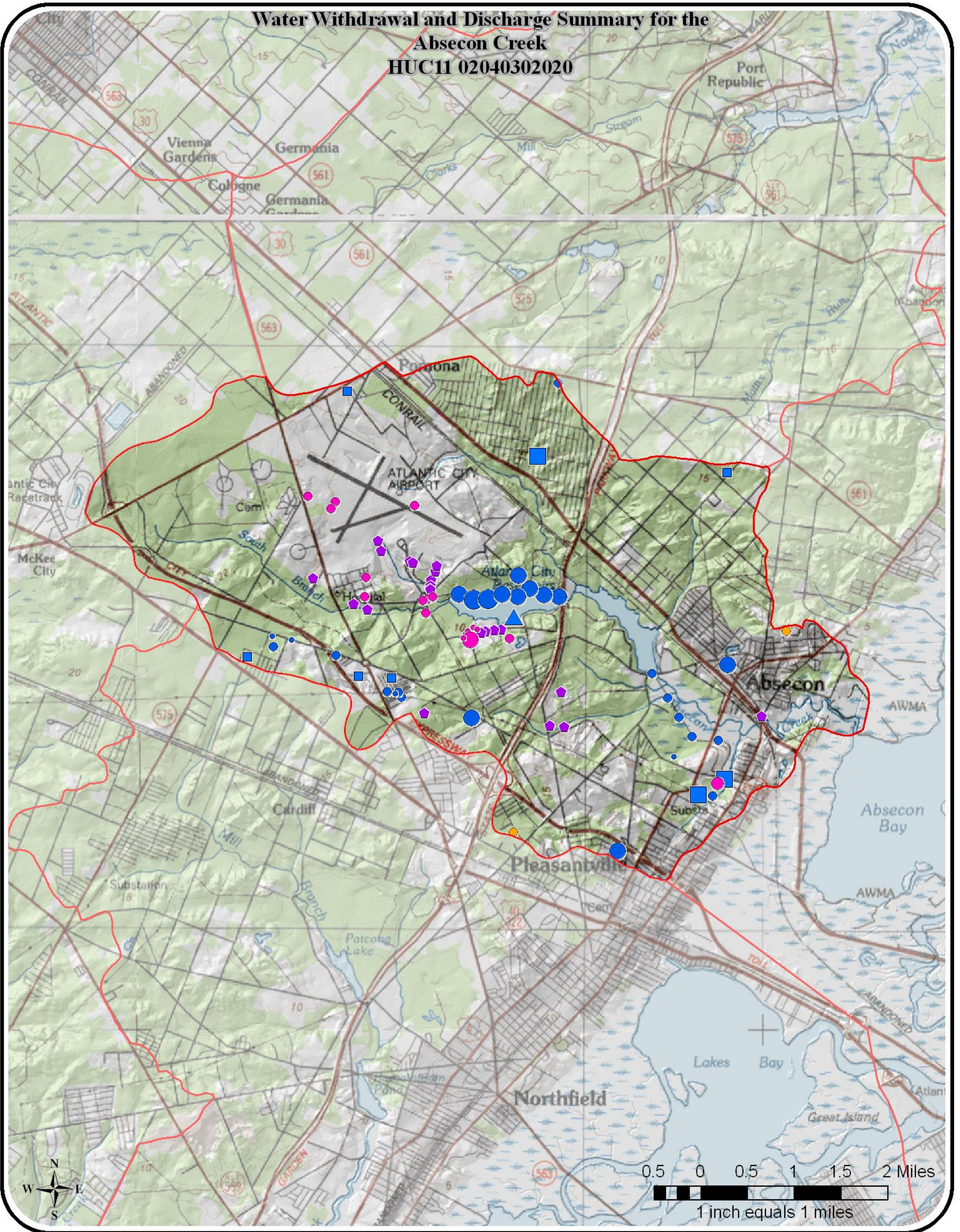
Key for Withdrawal Data					
Source		1999 Withdrawal		Use Group	
GW Confined	□	No 1999 Use	●▲	Agricultural	●
GW Unconfined	○	1 - 50 MGY	■●▲	Commercial	●
SW	△	51 - 100 MGY	■●▲	Industrial	●
		101 - 500 MGY	■●▲	Irrigation	●
		> 500 MGY	■●▲	Mining	●
				Not Classified	●
				Potable Supply	●
				Power Generation	●

MGY = millions of gallons per year





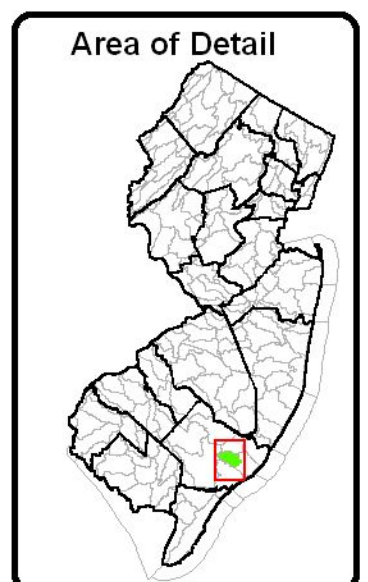
# Water Withdrawal and Discharge Summary for the Absecon Creek HUC11 02040302020



Key for Discharge Data	
<b>1999 Treated Effluent Discharge</b>	
0 - 50 MGY	◆
50 - 100 MGY	◆
100 - 500 MGY	◆
> 500 MGY	◆
<b>Other Permitted Discharge</b>	
	◆

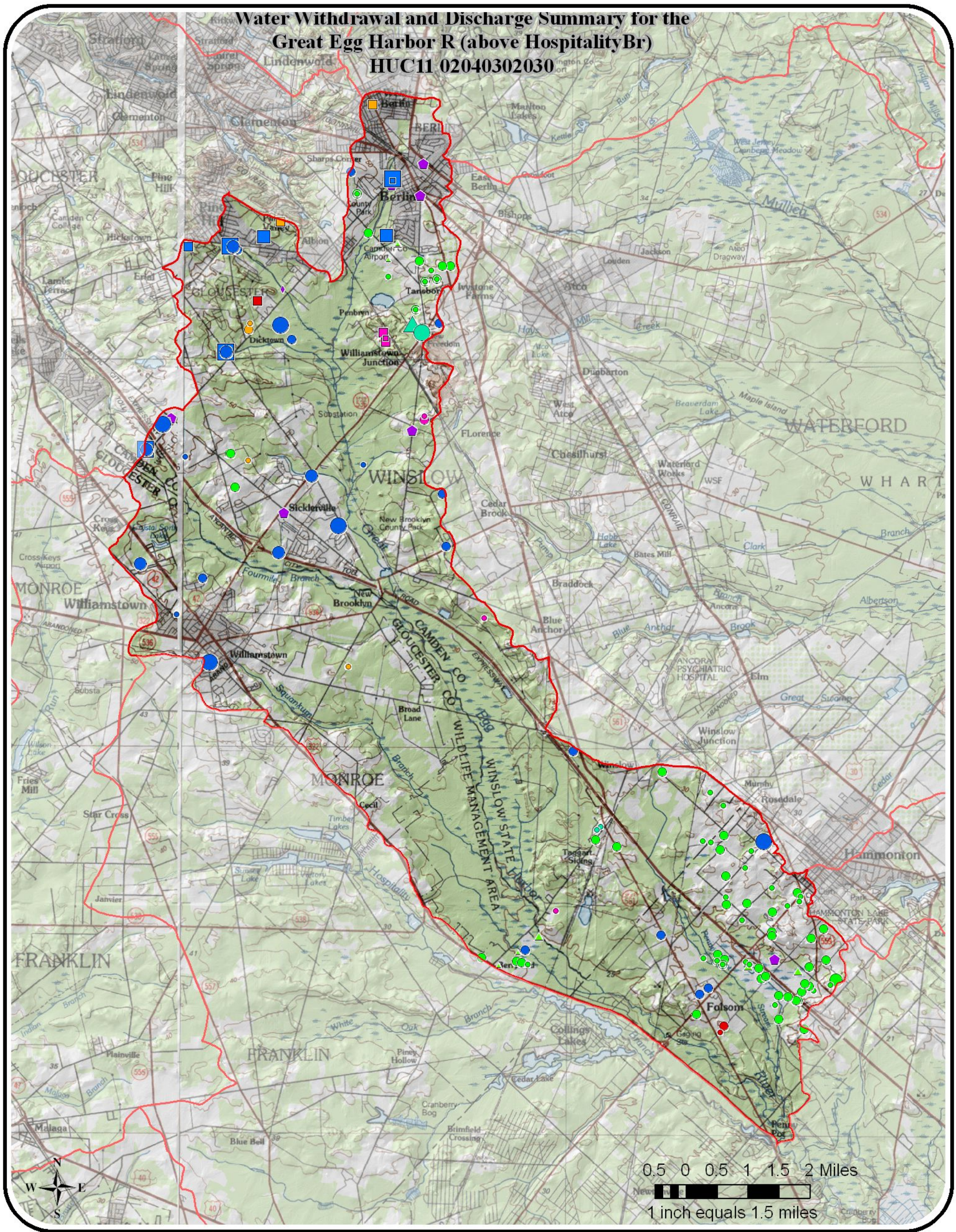
Key for Withdrawal Data	
<b>Source</b>	
GW Confined	□
GW Unconfined	○
SW	△
<b>1999 Withdrawal</b>	
No 1999 Use	●▲
1 - 50 MGY	■●▲
51 - 100 MGY	■●▲
101 - 500 MGY	■●▲
> 500 MGY	■●▲
<b>Use Group</b>	
Agricultural	●
Commercial	●
Industrial	●
Irrigation	●
Mining	●
Not Classified	●
Potable Supply	●
Power Generation	●

MGY = millions of gallons per year





# Water Withdrawal and Discharge Summary for the Great Egg Harbor R (above HospitalityBr) HUC11 02040302030

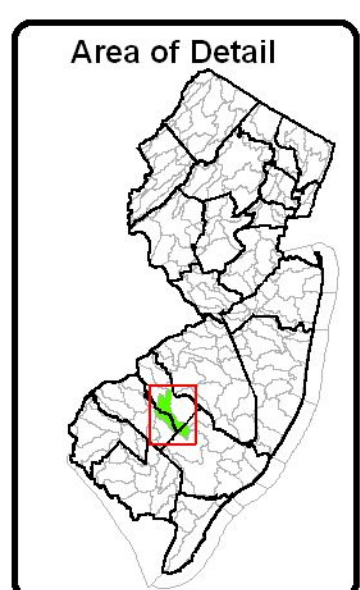


Key for Discharge Data		
<b>1999 Treated Effluent Discharge</b>		
0 - 50	MGY	◆
50 - 100	MGY	◆
100 - 500	MGY	◆
> 500	MGY	◆
<b>Other Permitted Discharge</b>		
		◆

Key for Withdrawal Data		
<b>Source</b>		
GW Confined	□	
GW Unconfined	○	
SW	△	
<b>1999 Withdrawal</b>		
No 1999 Use	●▲	
1 - 50 MGY	■●▲	
51 - 100 MGY	■●▲	
101 - 500 MGY	■●▲	
> 500 MGY	■●▲	

Use Group	
Agricultural	●
Commercial	●
Industrial	●
Irrigation	●
Mining	●
Not Classified	●
Potable Supply	●
Power Generation	●

MGY = millions of gallons per year

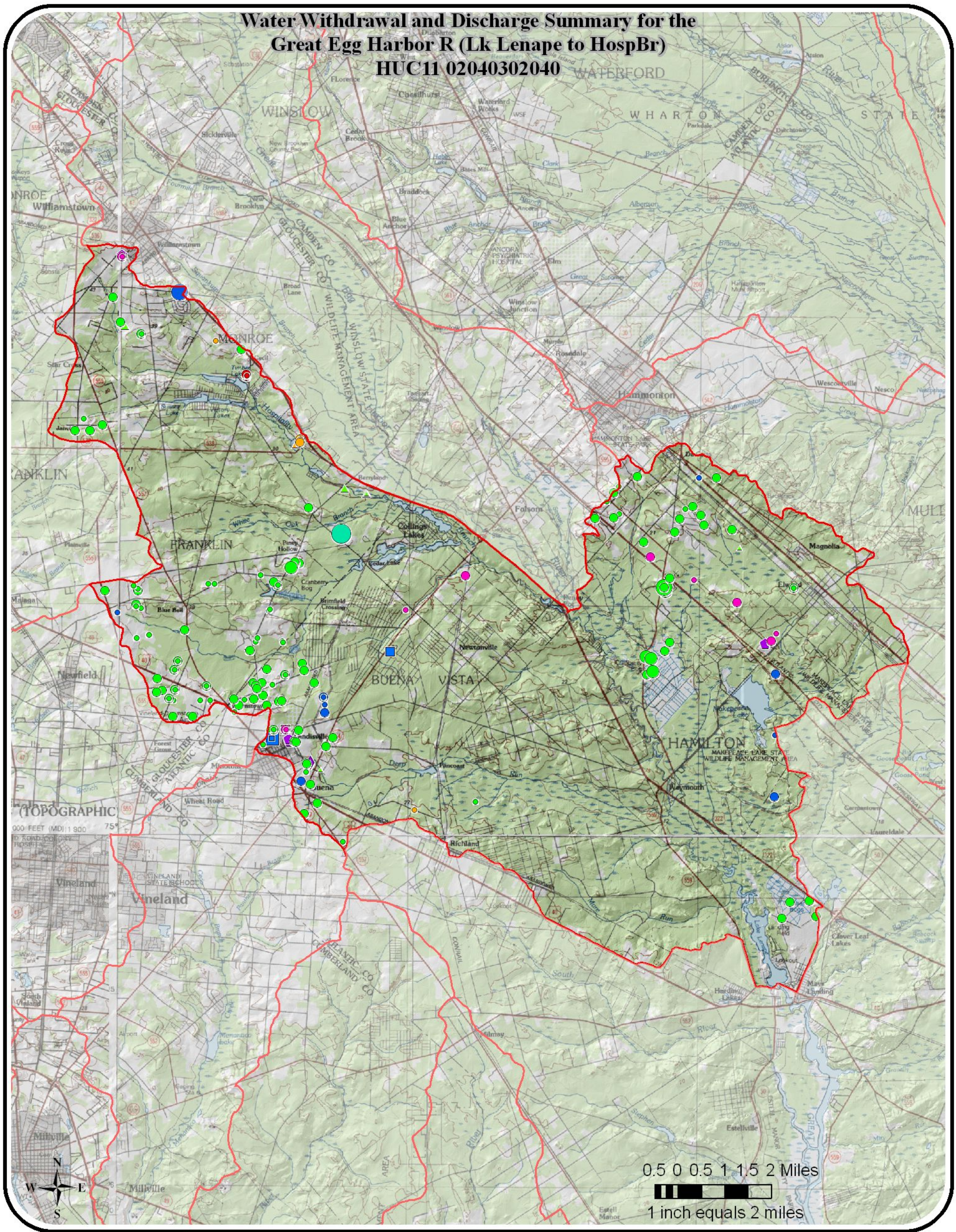






# Water Withdrawal and Discharge Summary for the Great Egg Harbor R (Lk Lenape to HospBr)

HUC11 02040302040

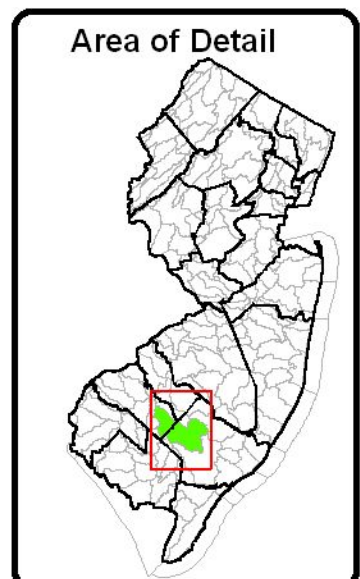


Key for Discharge Data		
1999 Treated Effluent Discharge		
0 - 50	MGY	◆
50 - 100	MGY	◆
100 - 500	MGY	◆
> 500	MGY	◆
Other Permitted Discharge		
		◆

Key for Withdrawal Data		
Source		
GW Confined	□	
GW Unconfined	○	
SW	△	
1999 Withdrawal		
No 1999 Use	●▲	
1 - 50 MGY	■●▲	
51 - 100 MGY	■●▲	
101 - 500 MGY	■●▲	
> 500 MGY	■●▲	

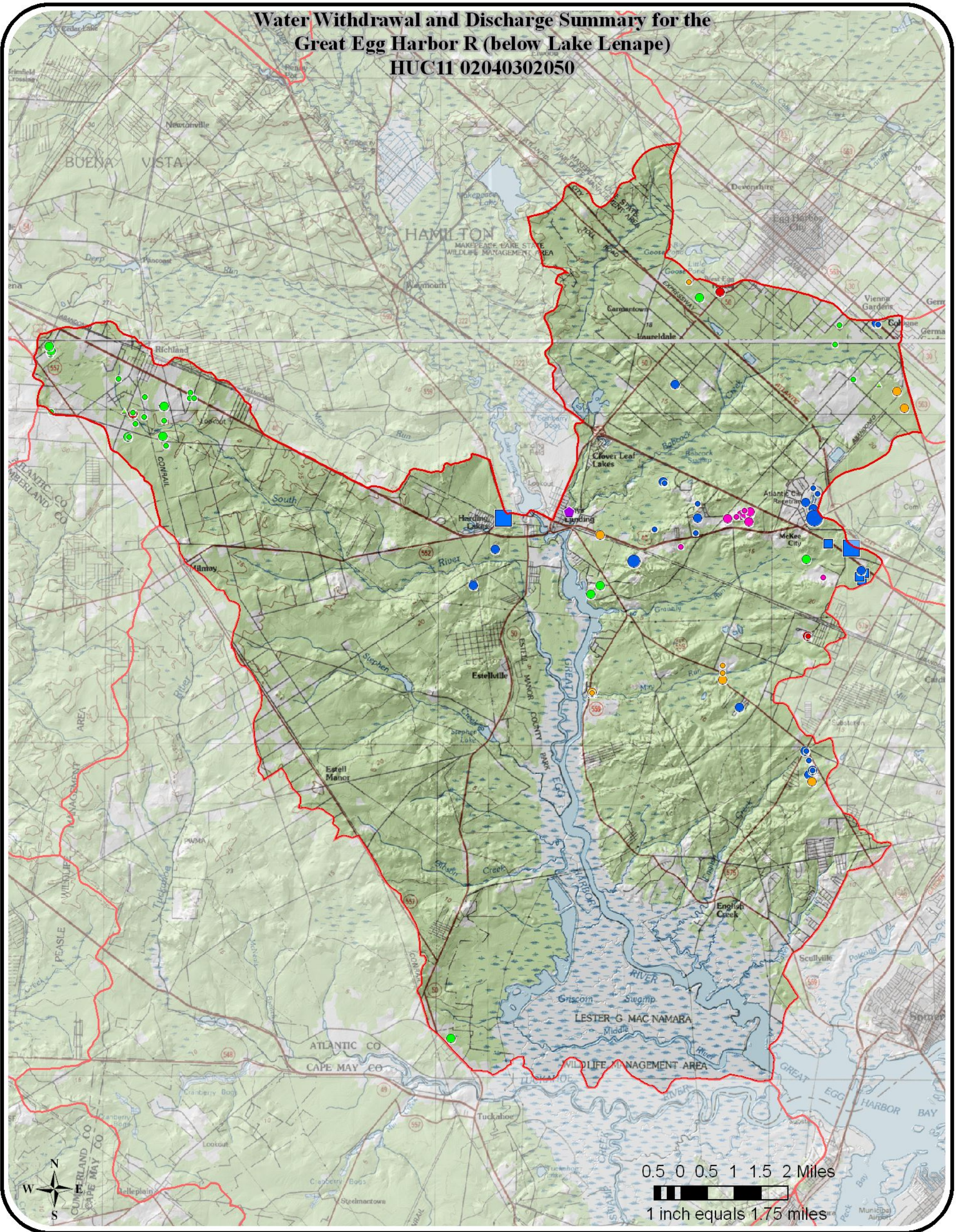
Use Group	
Agricultural	●
Commercial	●
Industrial	●
Irrigation	●
Mining	●
Not Classified	●
Potable Supply	●
Power Generation	●

MGY = millions of gallons per year





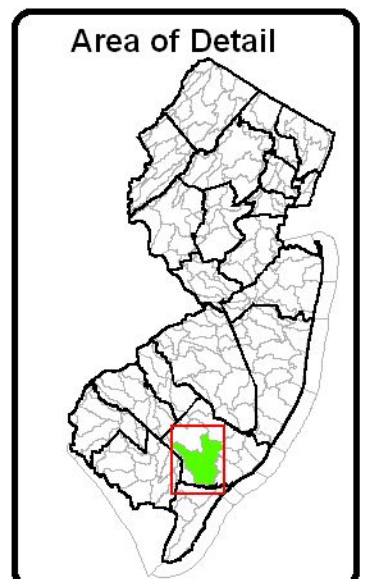
**Water Withdrawal and Discharge Summary for the  
Great Egg Harbor R (below Lake Lenape)  
HUC11 02040302050**



Key for Discharge Data		
<b>1999 Treated Effluent Discharge</b>		
0 - 50	MGY	◆
50 - 100	MGY	◆
100 - 500	MGY	◆
> 500	MGY	◆
<b>Other Permitted Discharge</b>		
		◆

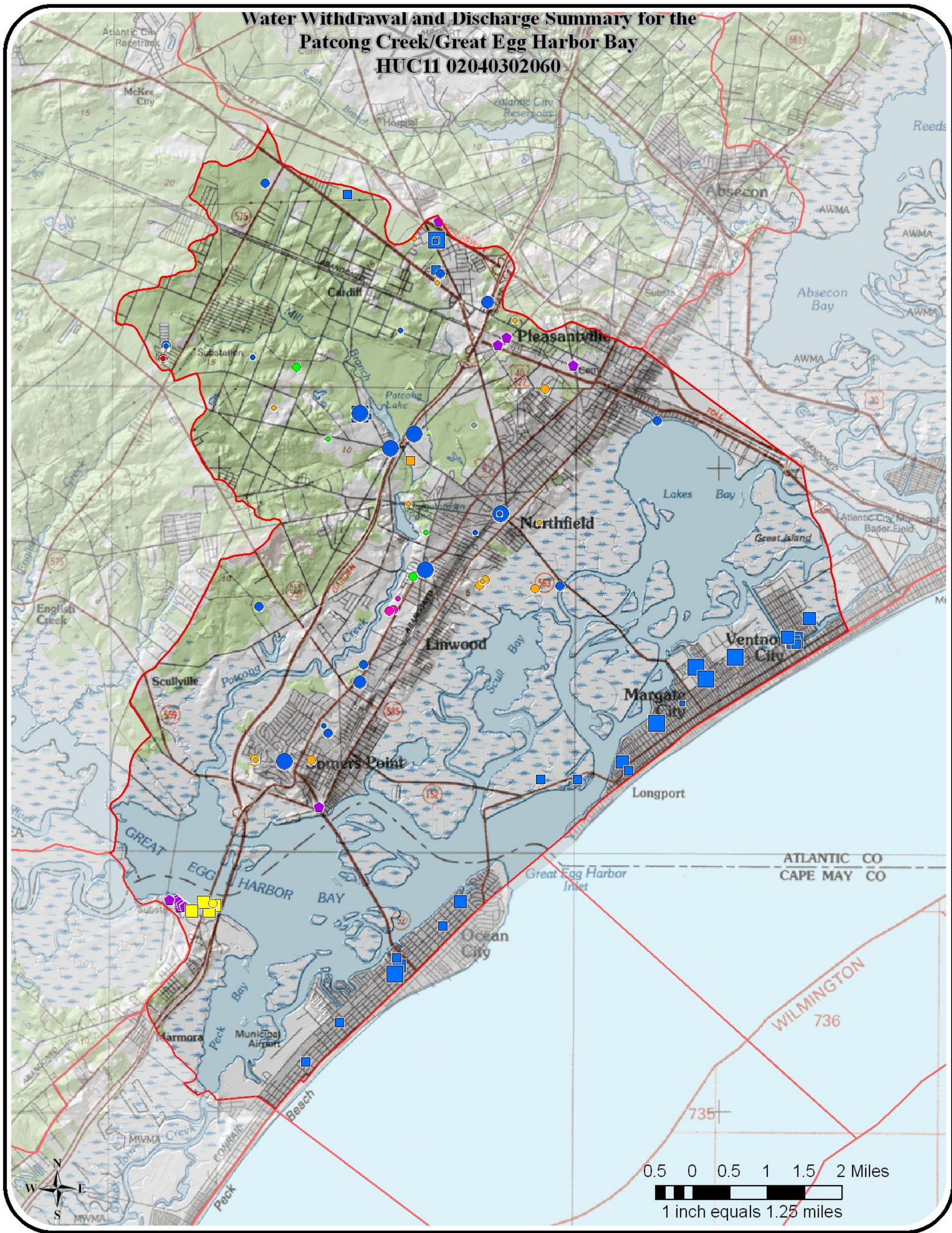
Key for Withdrawal Data			
Source	1999 Withdrawal	Use Group	
GW Confined	No 1999 Use	Agricultural	●
GW Unconfined	1 - 50 MGY	Commercial	●
SW	51 - 100 MGY	Industrial	●
	101 - 500 MGY	Irrigation	●
	> 500 MGY	Mining	●
		Not Classified	●
		Potable Supply	●
		Power Generation	●

MGY = millions of gallons per year



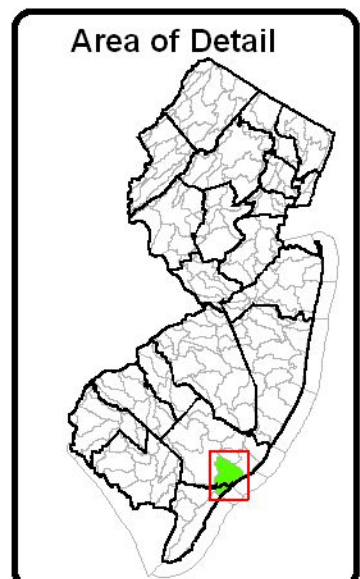


# Water Withdrawal and Discharge Summary for the Patcong Creek/Great Egg Harbor Bay HUC11 02040302060



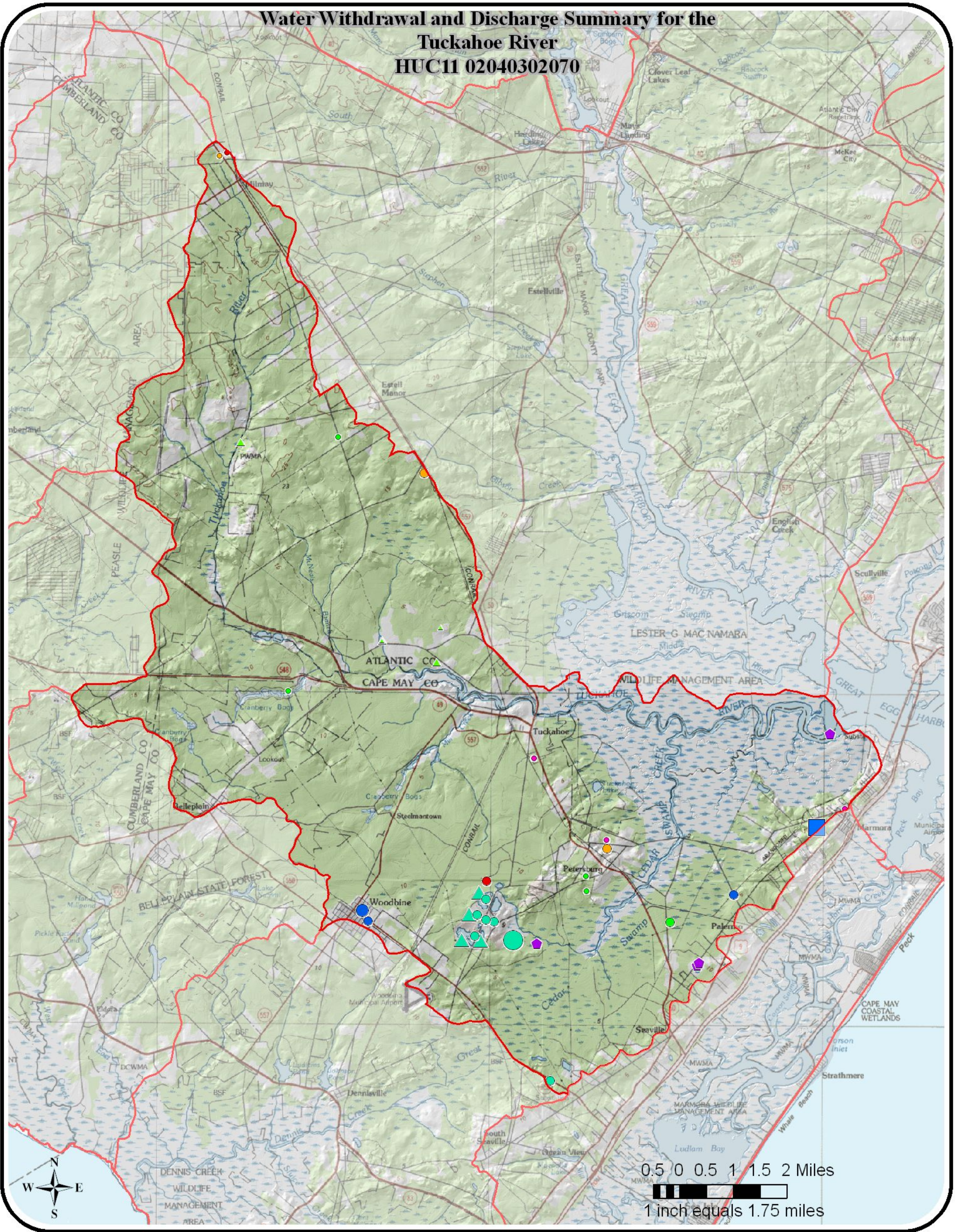
Key for Discharge Data	
1999 Treated Effluent Discharge	
0 - 50 MGY	◆
50 - 100 MGY	◆
100 - 500 MGY	◆
> 500 MGY	◆
Other Permitted Discharge	
	◆

Key for Withdrawal Data	
Source	
GW Confined	□
GW Unconfined	○
SW	△
1999 Withdrawal	
No 1999 Use	●▲
1 - 50 MGY	■●▲
51 - 100 MGY	■●▲
101 - 500 MGY	■●▲
> 500 MGY	■●▲
MGY = millions of gallons per year	
Use Group	
Agricultural	●
Commercial	●
Industrial	●
Irrigation	●
Mining	●
Not Classified	●
Potable Supply	●
Power Generation	●





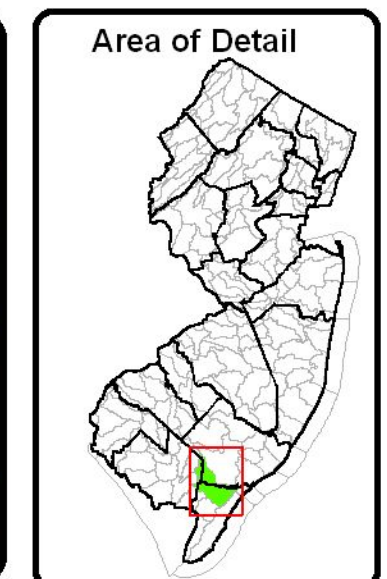
# Water Withdrawal and Discharge Summary for the Tuckahoe River HUC11 02040302070



Key for Discharge Data		
1999 Treated Effluent Discharge		
0 - 50	MGY	◆
50 - 100	MGY	◆
100 - 500	MGY	◆
> 500	MGY	◆
Other Permitted Discharge		◆

Key for Withdrawal Data			
Source		1999 Withdrawal	
GW Confined	□	No 1999 Use	●▲
GW Unconfined	○	1 - 50 MGY	■●▲
SW	△	51 - 100 MGY	■●▲
		101 - 500 MGY	■●▲
		> 500 MGY	■●▲

MGY = millions of gallons per year

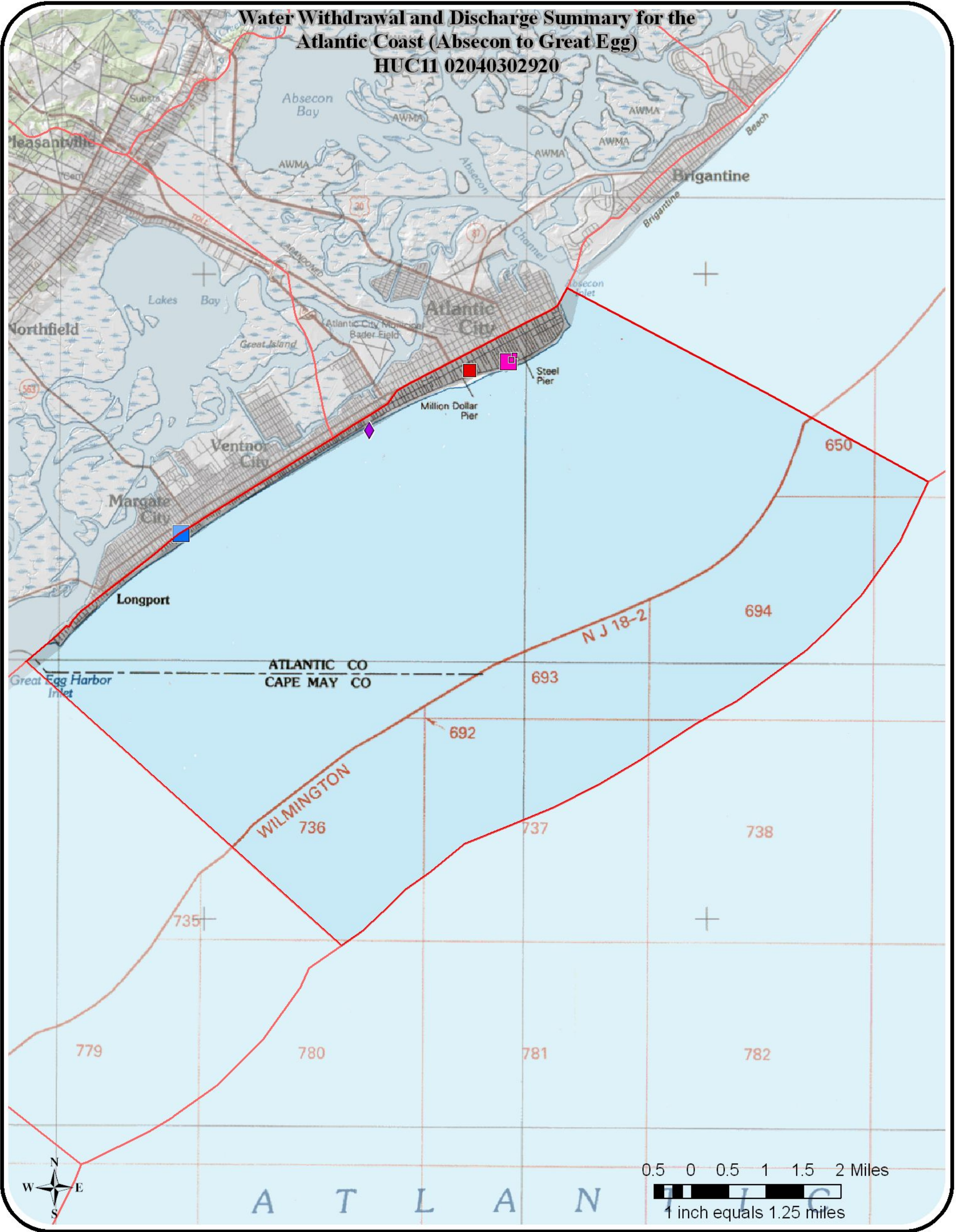


Use Group	
Agricultural	●
Commercial	●
Industrial	●
Irrigation	●
Mining	●
Not Classified	●
Potable Supply	●
Power Generation	●





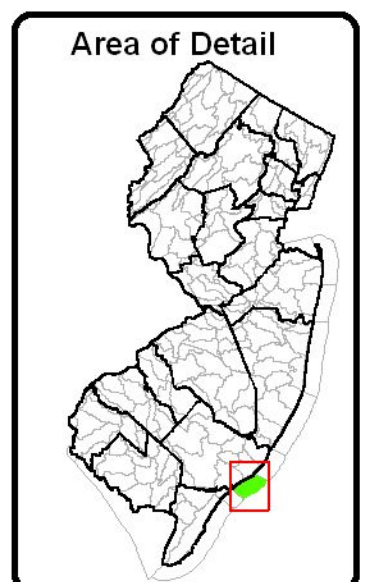
**Water Withdrawal and Discharge Summary for the  
Atlantic Coast (Absecon to Great Egg)  
HUC11 02040302920**



Key for Discharge Data	
1999 Treated Effluent Discharge	
0 - 50 MGY	◆
50 - 100 MGY	◆
100 - 500 MGY	◆
> 500 MGY	◆
Other Permitted Discharge	◆

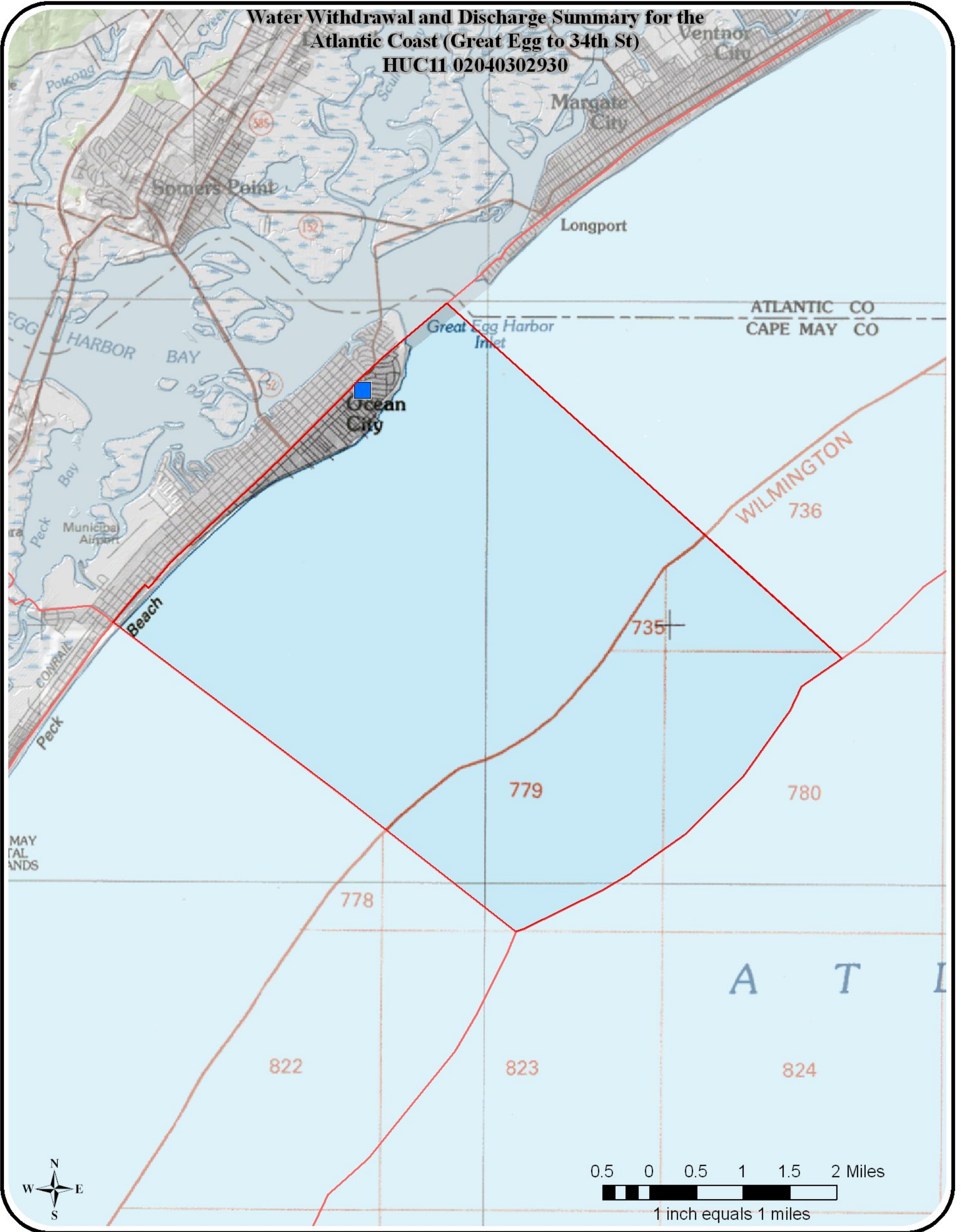
Key for Withdrawal Data		
Source	1999 Withdrawal	Use Group
GW Confined □	No 1999 Use ■●▲	Agricultural ●
GW Unconfined ○	1 - 50 MGY ■●▲	Commercial ●
SW △	51 - 100 MGY ■●▲	Industrial ●
	101 - 500 MGY ■●▲	Irrigation ●
	> 500 MGY ■●▲	Mining ●
		Not Classified ●
		Potable Supply ●
		Power Generation ●

MGY = millions of gallons per year





**Water Withdrawal and Discharge Summary for the  
Atlantic Coast (Great Egg to 34th St)  
HUC11 02040302930**



Key for Discharge Data		
1999 Treated Effluent Discharge		
0 - 50	MGY	◆
50 - 100	MGY	◆
100 - 500	MGY	◆
> 500	MGY	◆
Other Permitted Discharge		◆

Key for Withdrawal Data					
Source		1999 Withdrawal		Use Group	
GW Confined	□	No 1999 Use	●●▲	Agricultural	●
GW Unconfined	○	1 - 50 MGY	■●▲	Commercial	●
SW	△	51 - 100 MGY	■●▲	Industrial	●
		101 - 500 MGY	■●▲	Irrigation	●
		> 500 MGY	■●▲	Mining	●
				Not Classified	●
				Potable Supply	●
				Power Generation	●

MGY = millions of gallons per year

