



State of New Jersey
Department of Environmental Protection
Geological Survey



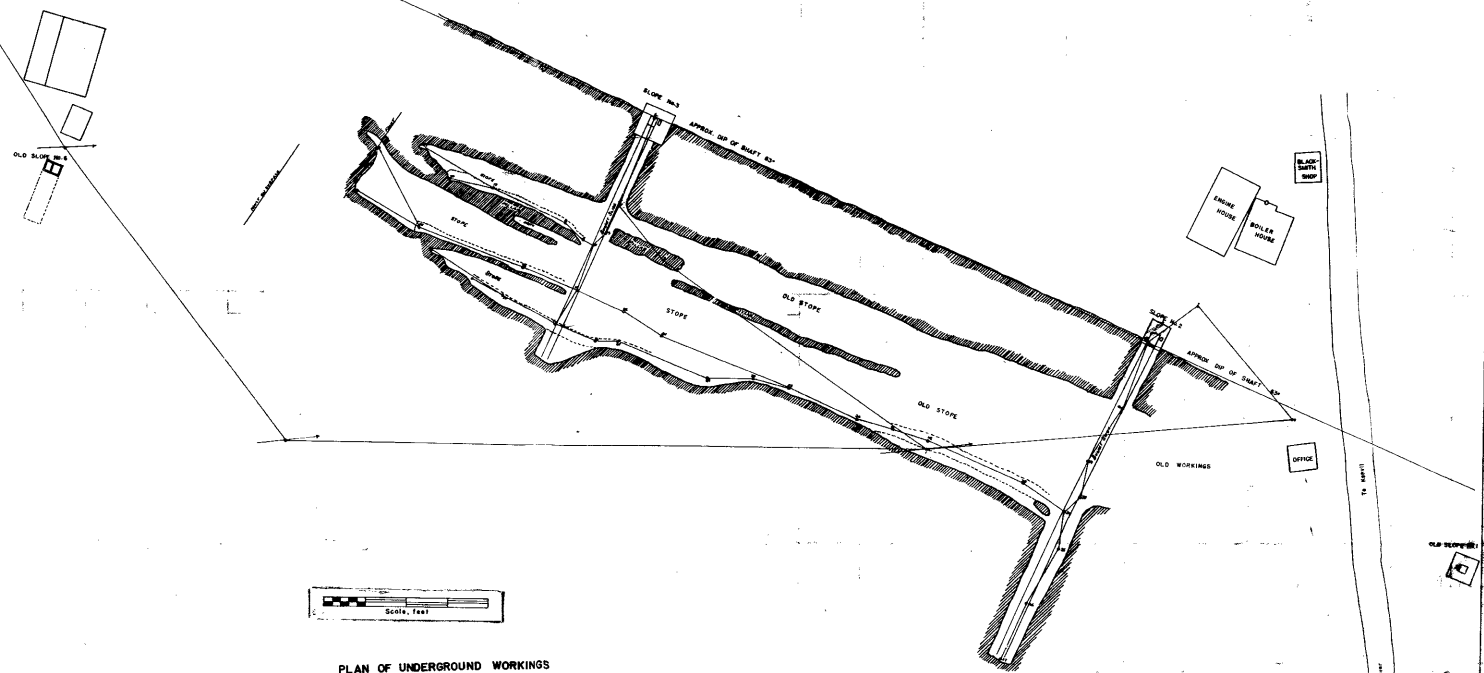
Information Disclaimer

The State of New Jersey makes great effort to provide secure, accurate and complete information. However, portions of the information contained here may be incorrect or not current.

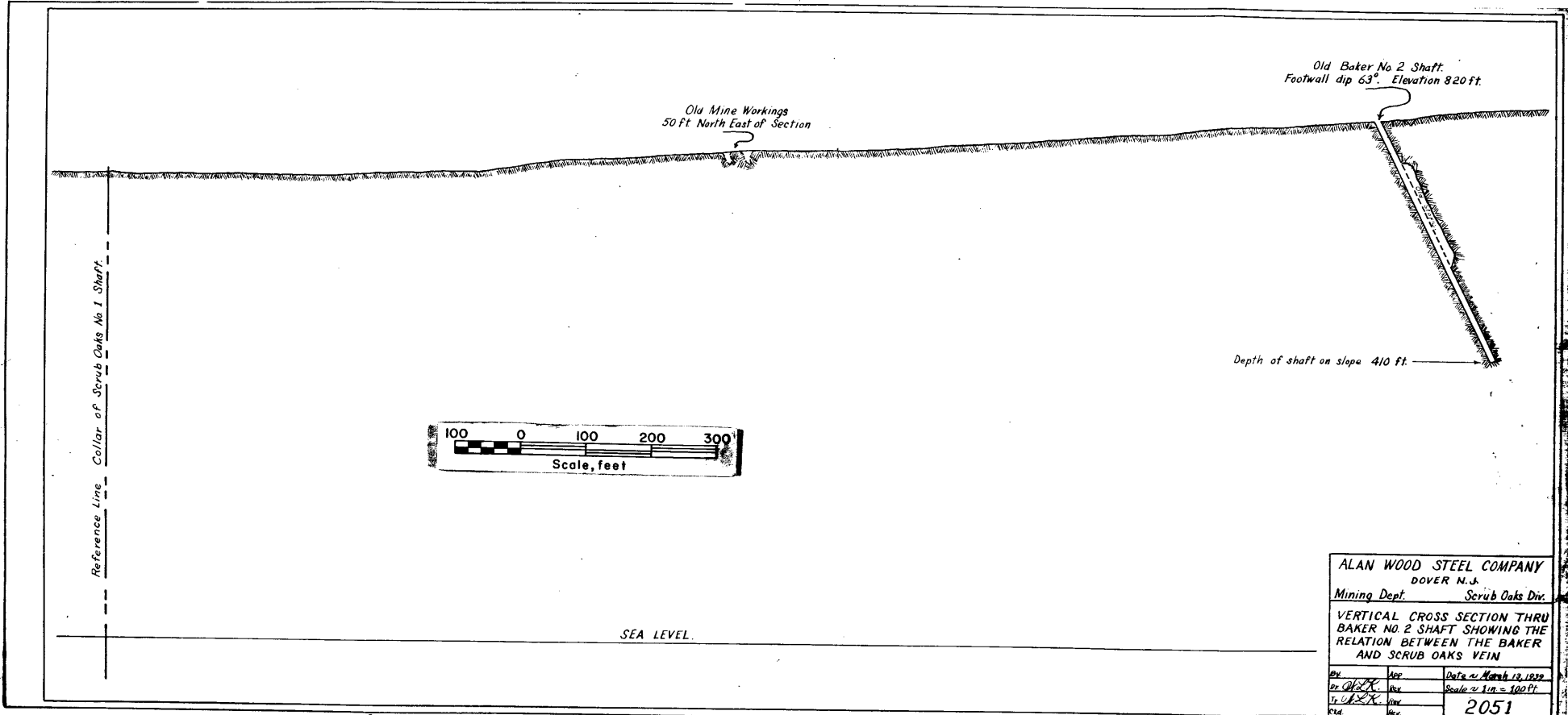
The State of New Jersey, its officers, employees or agents shall not be liable for damages or losses of any kind arising out of or in connection with the use or performance of information, including but not limited to, damages or losses caused by reliance upon the accuracy or timeliness of any such information, or damages incurred from the viewing, distributing, or copying of those materials.

The materials and information provided here are provided "as is." No warranty of any kind, implied, expressed, or statutory, including but not limited to the warranties of non-infringement of third party rights, title, merchantability, fitness for a particular purpose, and freedom from computer virus, is given with respect to the contents of this document.

THE BAKER MINE
MINE HILL, N.J.



PLAN OF UNDERGROUND WORKINGS
SCALE 20'-1"
PERD S. RUTTMANN MINING ENGINEER



NJGS

03145

47

18X

354151

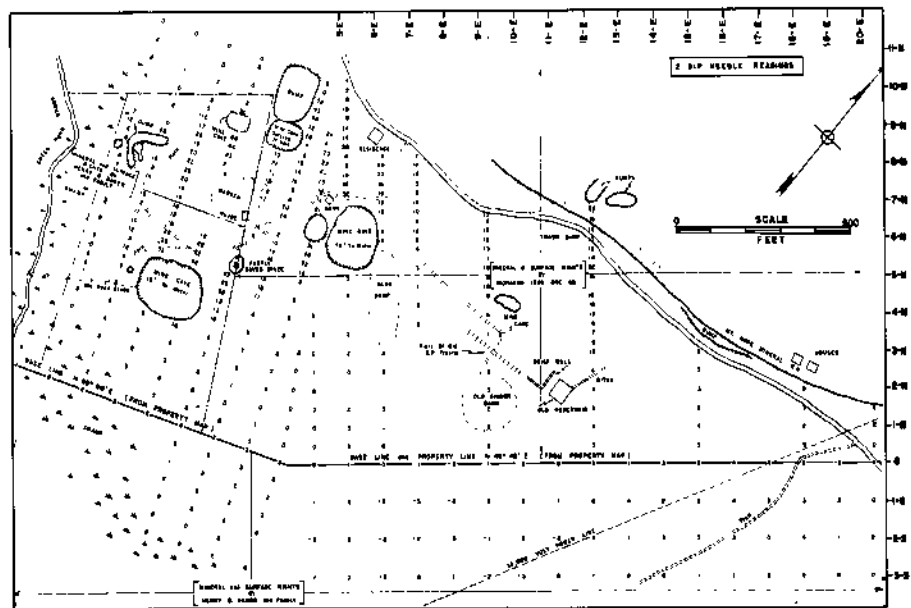


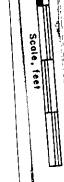
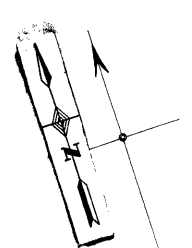
FIGURE 4 BAKER MINE MORRIS COUNTY, N. J.

30002 342

14.5.1 300771

ANDOVER IRON CO

NEW JERSEY IRON MINING Co.



The DELL Lands

Road from

A. K. BAKER.

DICKERSON SUCCASUNNA MINING Co.

CRANE IRON Co.

CRANE IRON Co.

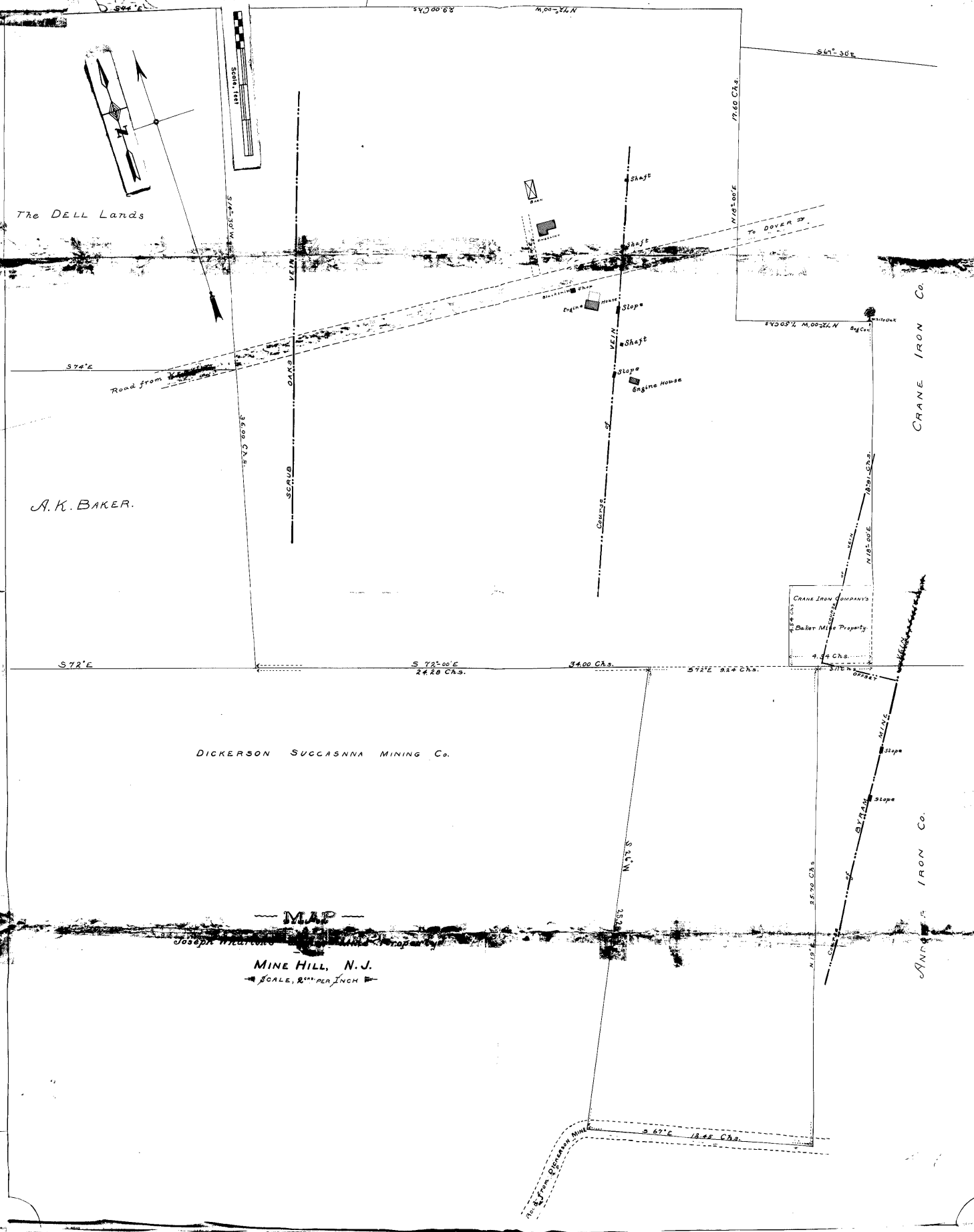
CRANE IRON COMPANY'S
Baker Mine Property
4.34 Chs.

MAP

MINE HILL, N. J.
SCALE, 2" PER INCH

Road from

S 87° E 13.45 Chs.



S 72° E

S 72° 00' E
24.28 Chs.

34.00 Chs.

S 72° E 9.24 Chs.

4.54 Chs.

3.11 Chs.
OFFSET

DICKERSON SUCCASUNNA MINING Co.

MAP

Joseph Wharton's Baker Mine Property

- AT -

MINE HILL, N.J.

SCALE, 2^{CHS.} PER INCH

CRANE IRON COMPANY'S
Baker Mine Property.

4.54 Chs.

4.54 Chs.

3.11 Chs.
OFFSET

MINE

Slope

Slope

BYRAM

of

N 19° E
25.70 Chs.

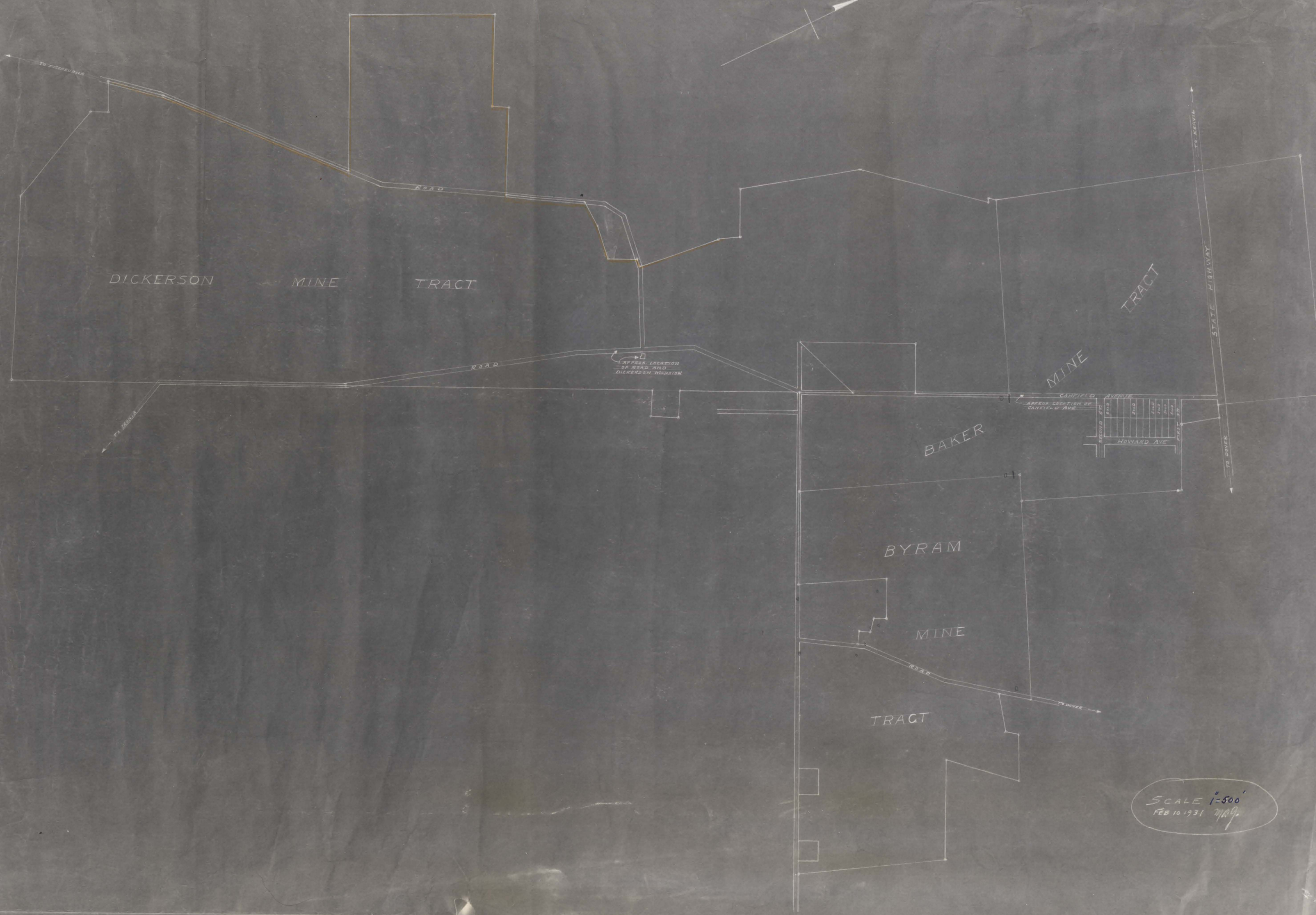
COURSE

OF VEIN

N 18° 00' E

VEIN

ANDOVER IRON Co.



SCALE 1"=500'
FEB 10 1931 *W.A.G.*

DICKERSON

BAKER

BYRAM

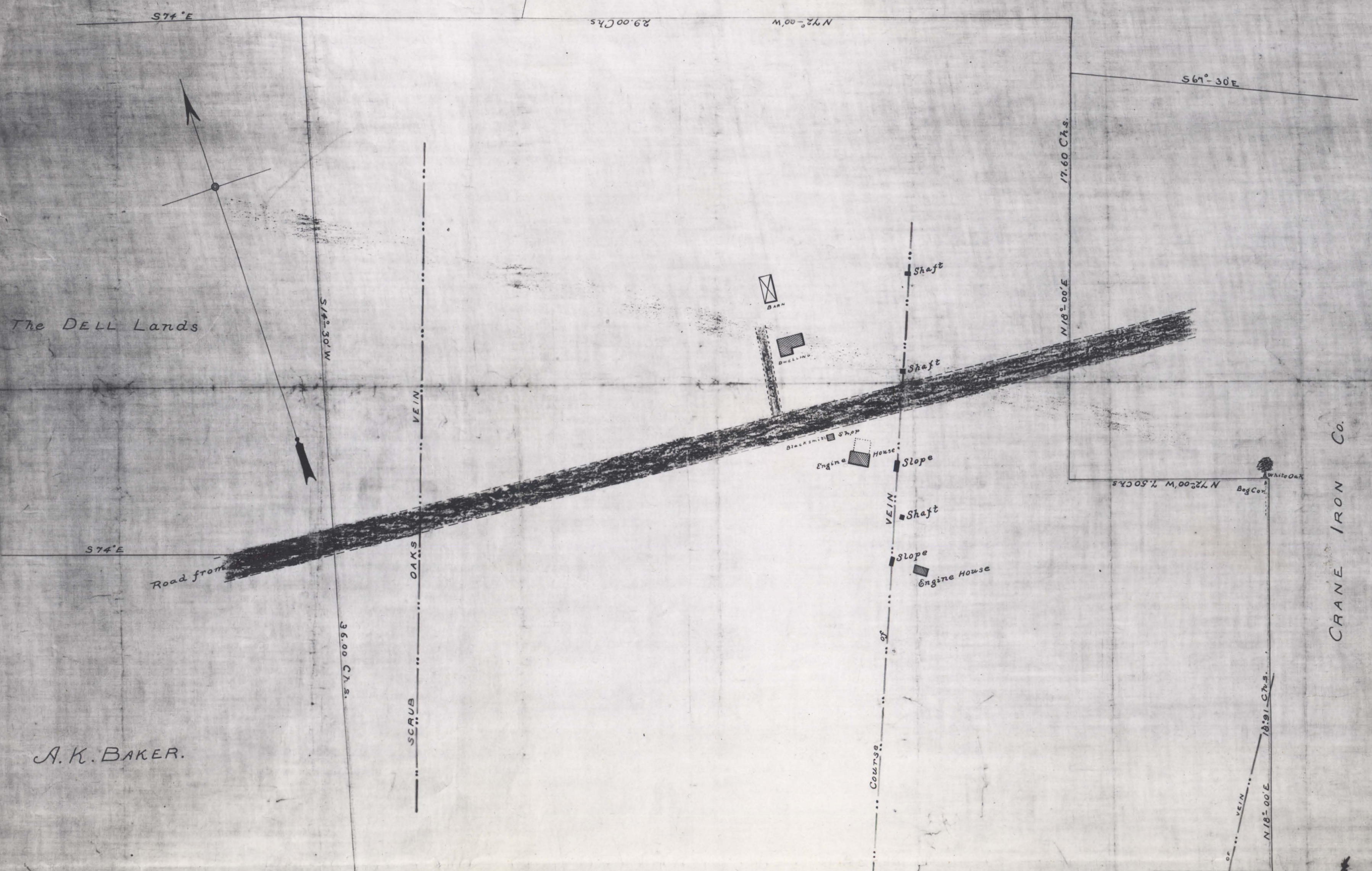
Scale 1" = 300'

Scale 1" = 200'



ANDOVER IRON CO

NEW JERSEY IRON MINING CO.



The DELL Lands

A.K. BAKER.

CRANE IRON CO.

N 30° E
 S 74° E
 N 72° 00' W
 29.00 Chs.
 S 67° 30' E
 17.60 Chs.
 N 18° 00' E
 S 14° 30' W
 VEIN
 OAKS
 SCRUB
 36.00 Chs.
 Road from
 BARN
 DWELLING
 Blacksmith Shop
 Engine House
 Slope
 Shaft
 Shaft
 Shaft
 Slope
 Engine House
 N 72° 00' W
 17.50 Chs.
 White Oak
 Bag Cor.
 N 18° 00' E
 18.91 Chs.
 VEIN
 of
 Course