



State of New Jersey  
Department of Environmental Protection  
Geological Survey

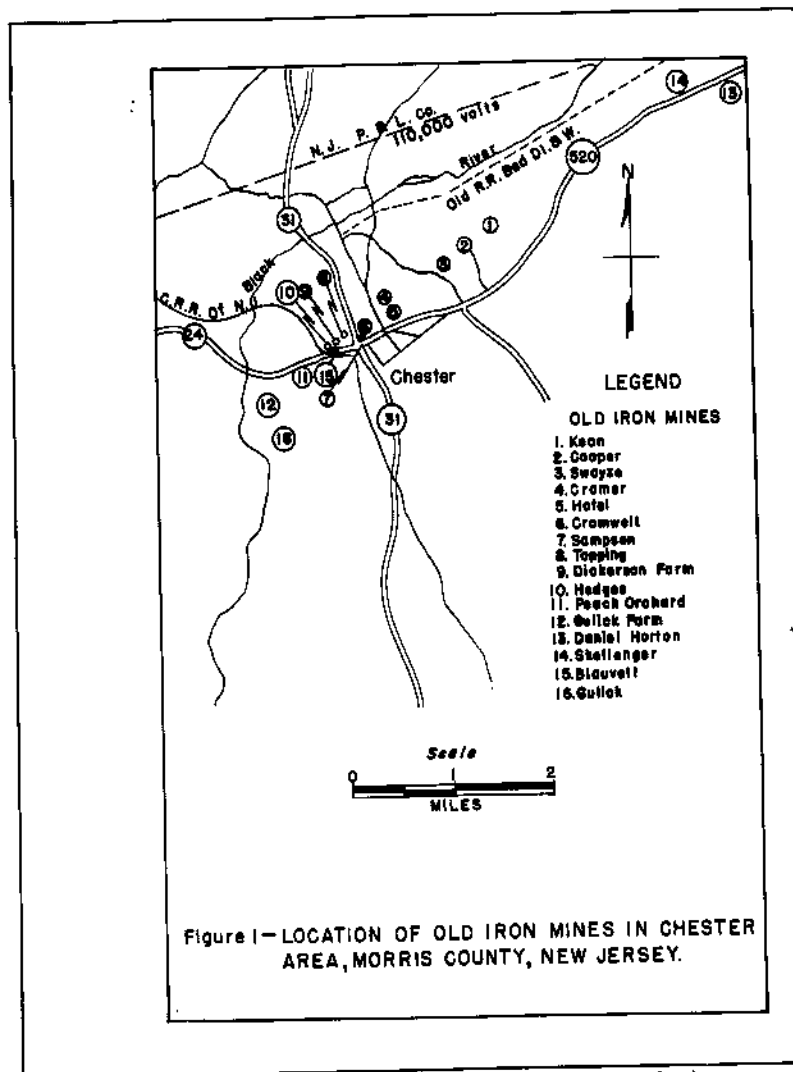


**Information Disclaimer**

The State of New Jersey makes great effort to provide secure, accurate and complete information. However, portions of the information contained here may be incorrect or not current.

The State of New Jersey, its officers, employees or agents shall not be liable for damages or losses of any kind arising out of or in connection with the use or performance of information, including but not limited to, damages or losses caused by reliance upon the accuracy or timeliness of any such information, or damages incurred from the viewing, distributing, or copying of those materials.

The materials and information provided here are provided "as is." No warranty of any kind, implied, expressed, or statutory, including but not limited to the warranties of non-infringement of third party rights, title, merchantability, fitness for a particular purpose, and freedom from computer virus, is given with respect to the contents of this document.

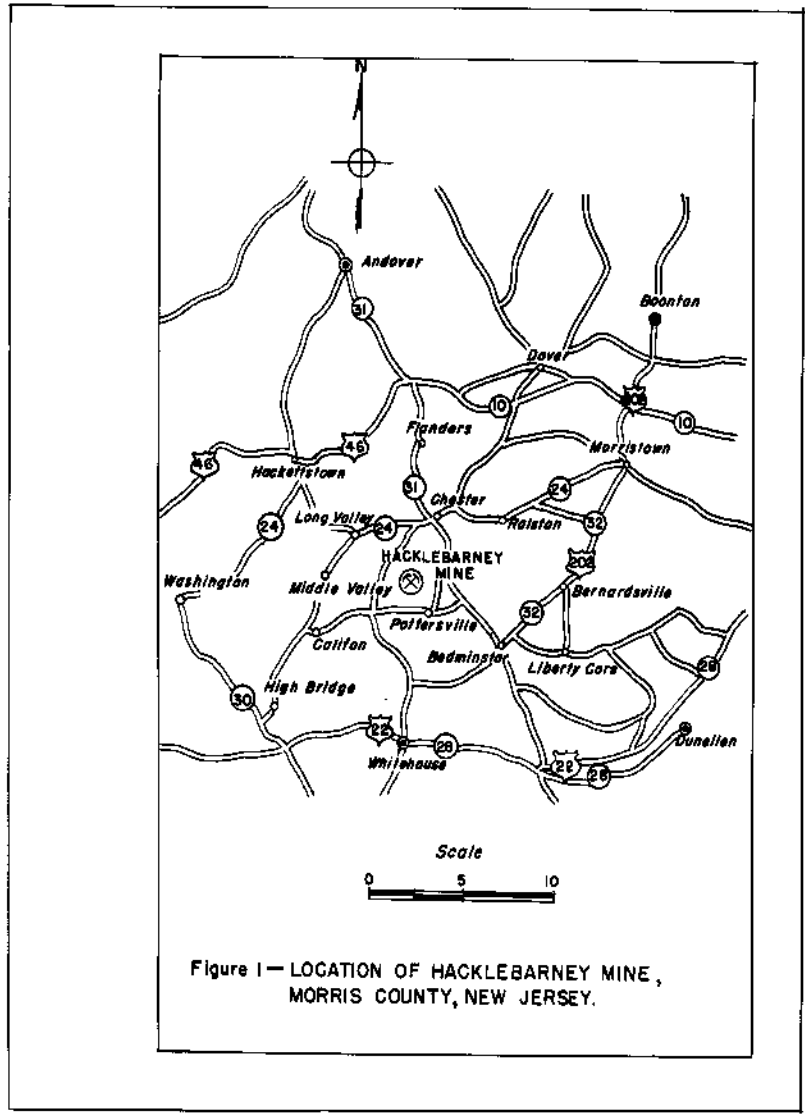


A/591

300020327

14.5.1 300756





A-106

30002

331

14.5.1

300760



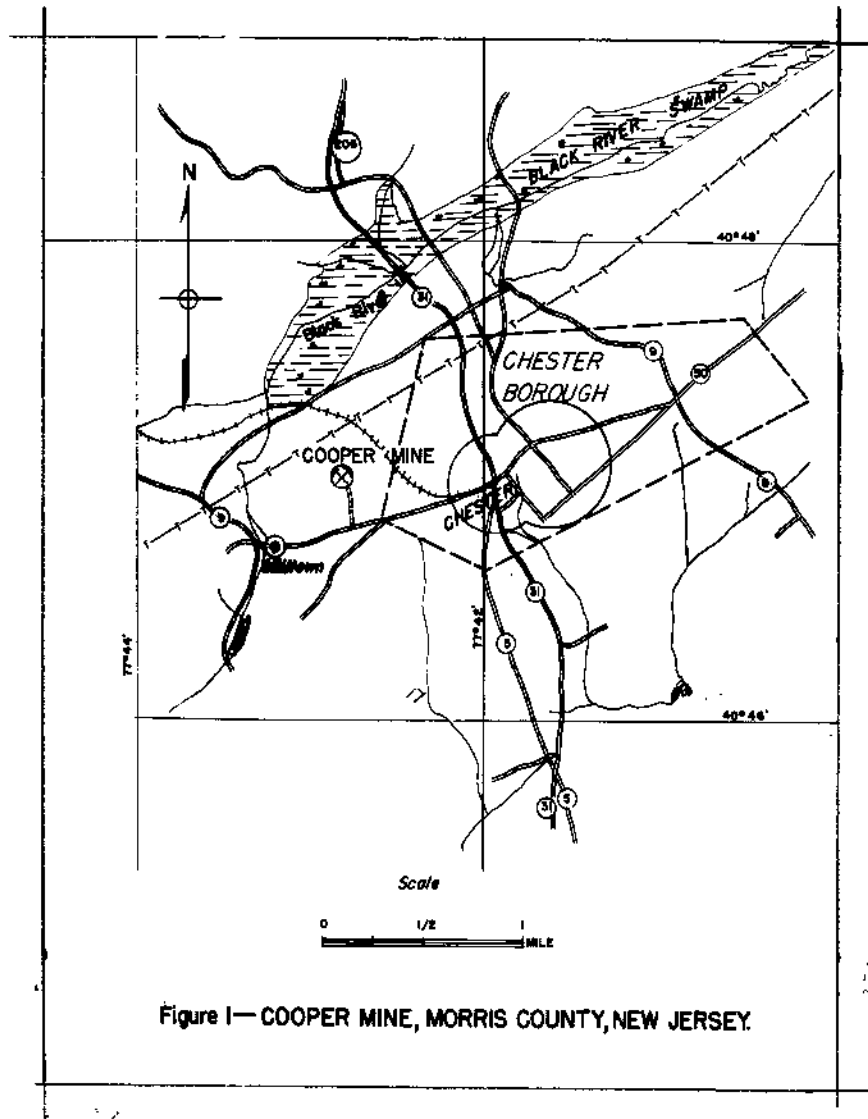


Figure 1— COOPER MINE, MORRIS COUNTY, NEW JERSEY.

300021322

14.5.10300751

Black River 56ch.±

SWAYZE

TREDWELL FARM  
U30-246

MARY L. COOPER  
146 A.

THOMAS BIRD

CHESTER  
IRON CO.

BIRD

BIRD

LEEKS

MAP OF  
PROPERTY OF MRS. O.C. PARKER  
SCOTCH PLAINS, NEW JERSEY  
COOPER MINE (CHESTER)  
MORRIS CO., NEW JERSEY



S. 20° E. 14.5 Ch.

N. 72° 30' E. 1.10 Ch.

S. 33° E. 7.25 Ch.

N. 77° E. 4.54 Ch.

S. 23° E. 6.04 Ch.

S. 51° W. 4 Ch.  
S. 33° E. 70 Links

S. 56° E. 22.62 Ch.

N. 31° W. 25 Ch.

N. 54° E. 22.4 Ch.

C.R.R. of N.J.

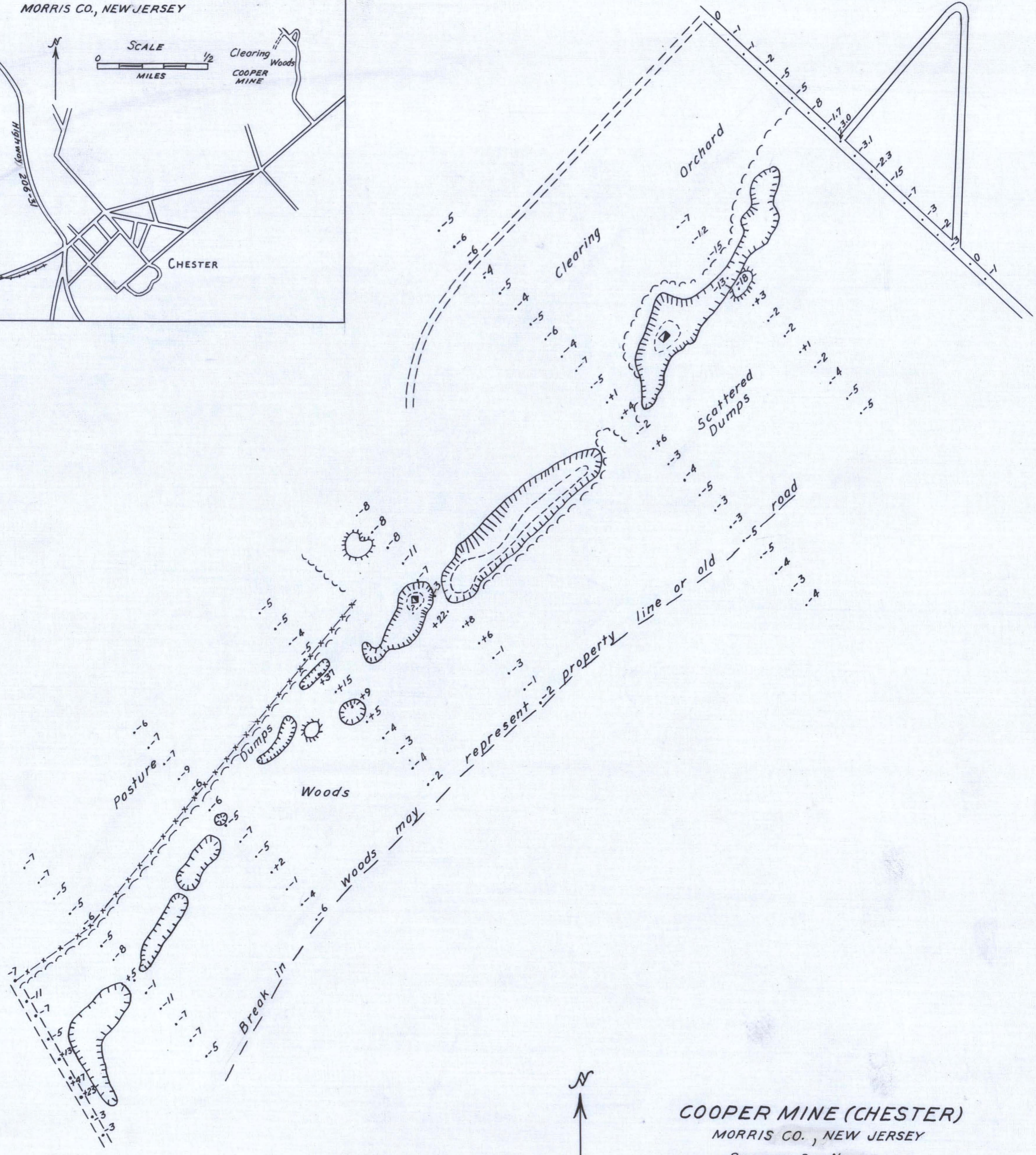
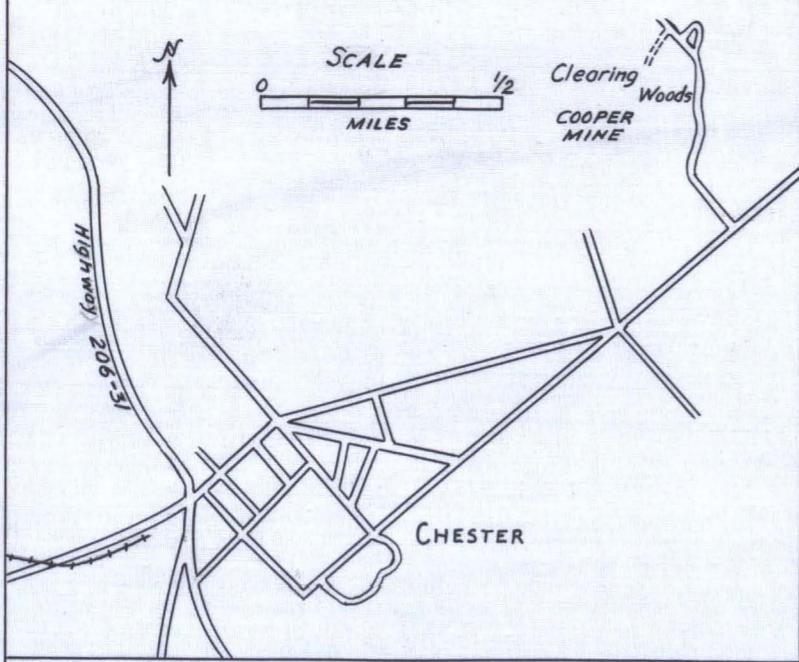
Cooper Mine Workings

S. 34° E. 41.5 Ch.

N. 34° W. 41.5 Ch.

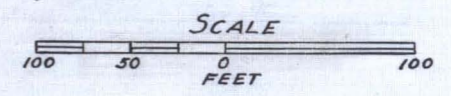
N. 56° E. 23.38 Ch.

COOPER MINE (CHESTER)  
MORRIS CO., NEW JERSEY



COOPER MINE (CHESTER)  
MORRIS CO., NEW JERSEY

SHOWING DIP NEEDLE  
VALUES AND WORKINGS





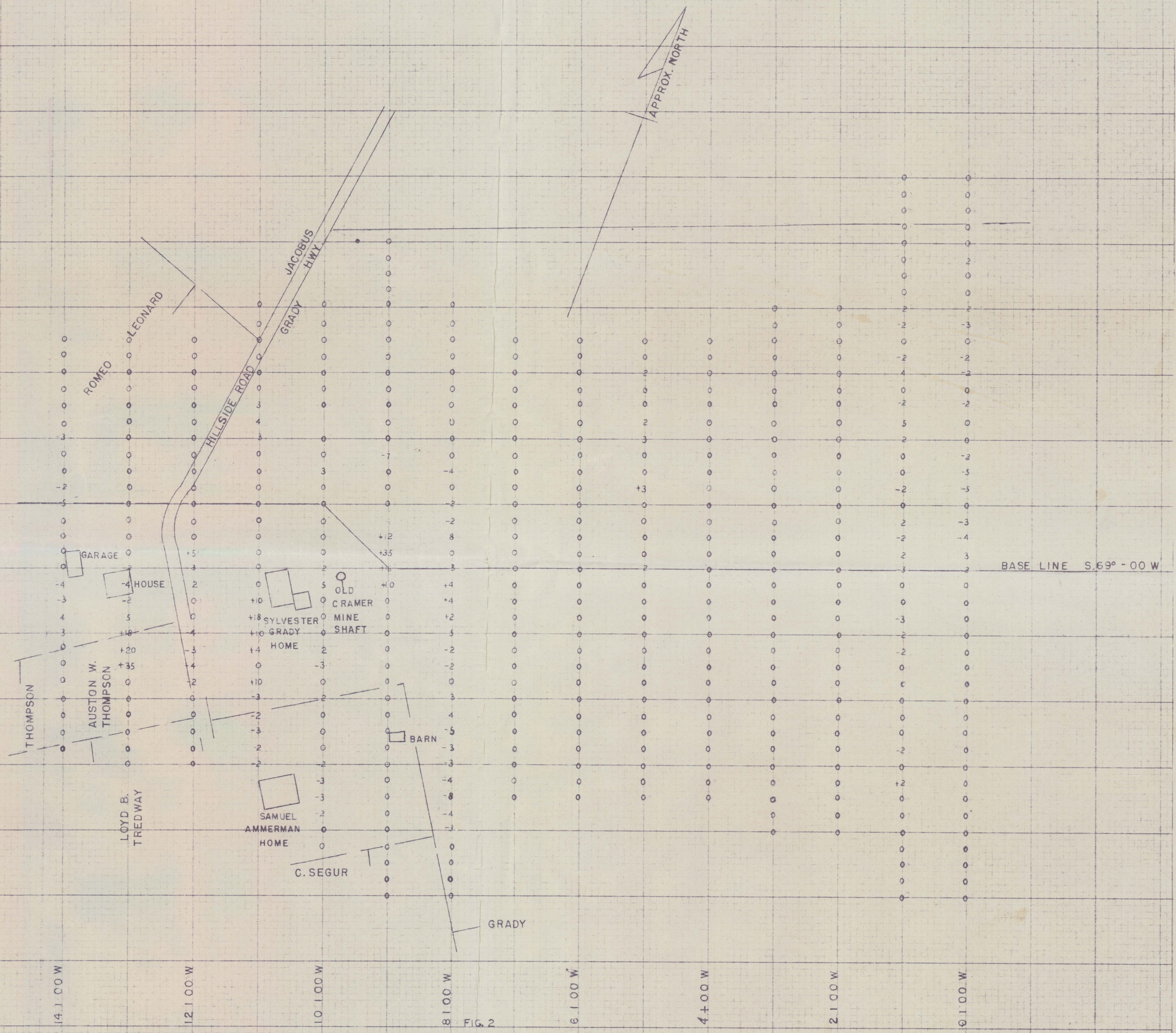
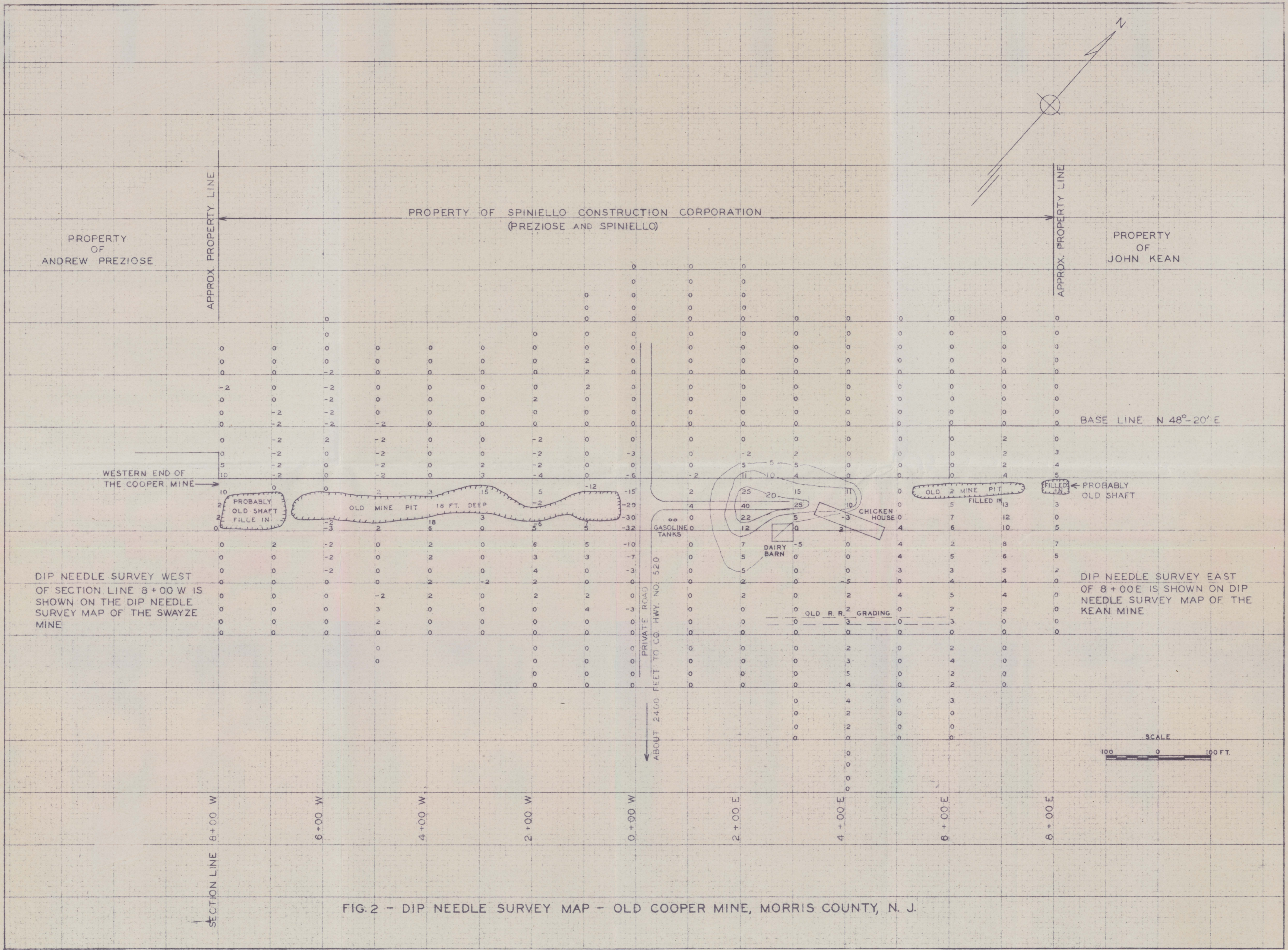


FIG. 2  
 OLD CRAMER MINE; CHESTER, NEW JERSEY  
 PROPERTY OF SYLVESTER GRADY  
 SCALE  
 1 IN = 100 FT HORIZ.  
 1 IN = ∞ VERT.



PROPERTY OF SPINIELLO CONSTRUCTION CORPORATION  
(PREZIOSE AND SPINIELLO)

PROPERTY OF  
ANDREW PREZIOSE

PROPERTY OF  
JOHN KEAN

APPROX. PROPERTY LINE

APPROX. PROPERTY LINE

BASE LINE N 48°-20' E

WESTERN END OF  
THE COOPER MINE

PROBABLY  
OLD SHAFT  
FILLE IN

OLD MINE PIT  
18 FT. DEEP

GASOLINE  
TANKS

DAIRY  
BARN

CHICKEN  
HOUSE

OLD MINE PIT  
FILLED IN

PROBABLY  
OLD SHAFT

DIP NEEDLE SURVEY WEST  
OF SECTION LINE 8+00 W IS  
SHOWN ON THE DIP NEEDLE  
SURVEY MAP OF THE SWAYZE  
MINE

DIP NEEDLE SURVEY EAST  
OF 8+00E IS SHOWN ON DIP  
NEEDLE SURVEY MAP OF THE  
KEAN MINE

PRIVATE ROAD  
ABOUT 2400 FEET TO CO. HWY. NO. 520

OLD R.R. GRADING

SCALE

100 0 100 FT.

SECTION LINE  
8+00 W

6+00 W

4+00 W

2+00 W

0+00 W

2+00 E

4+00 E

6+00 E

8+00 E

FIG. 2 - DIP NEEDLE SURVEY MAP - OLD COOPER MINE, MORRIS COUNTY, N. J.

