



State of New Jersey
Department of Environmental Protection
Geological Survey



Information Disclaimer

The State of New Jersey makes great effort to provide secure, accurate and complete information. However, portions of the information contained here may be incorrect or not current.

The State of New Jersey, its officers, employees or agents shall not be liable for damages or losses of any kind arising out of or in connection with the use or performance of information, including but not limited to, damages or losses caused by reliance upon the accuracy or timeliness of any such information, or damages incurred from the viewing, distributing, or copying of those materials.

The materials and information provided here are provided "as is." No warranty of any kind, implied, expressed, or statutory, including but not limited to the warranties of non-infringement of third party rights, title, merchantability, fitness for a particular purpose, and freedom from computer virus, is given with respect to the contents of this document.

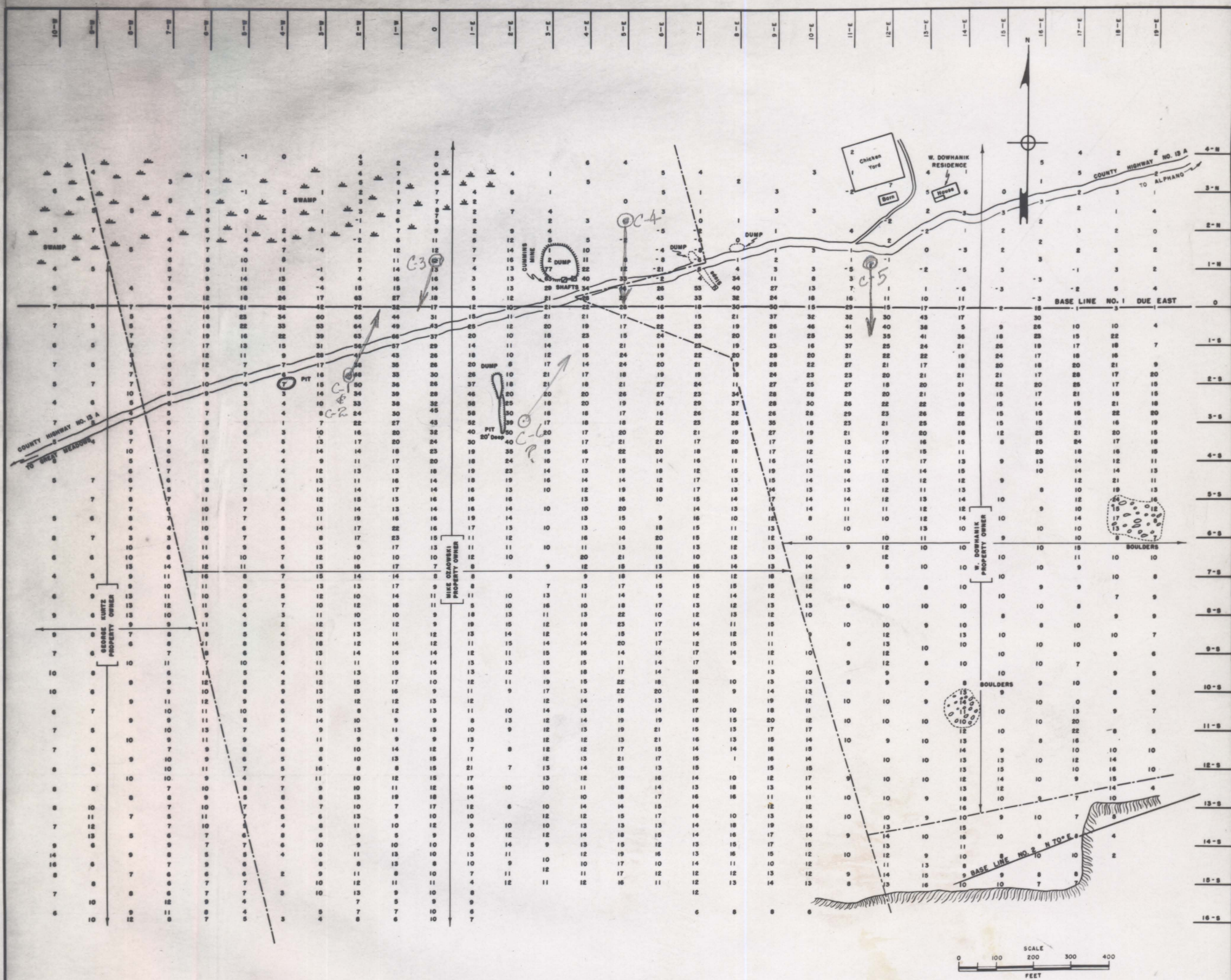


FIGURE 2—PLATE NO. 1—BASE LINE NO. 1
 DIP NEEDLE SURVEY—CUMMINS MINE AREA
 INDEPENDENCE TOWNSHIP, WARREN COUNTY, NEW JERSEY

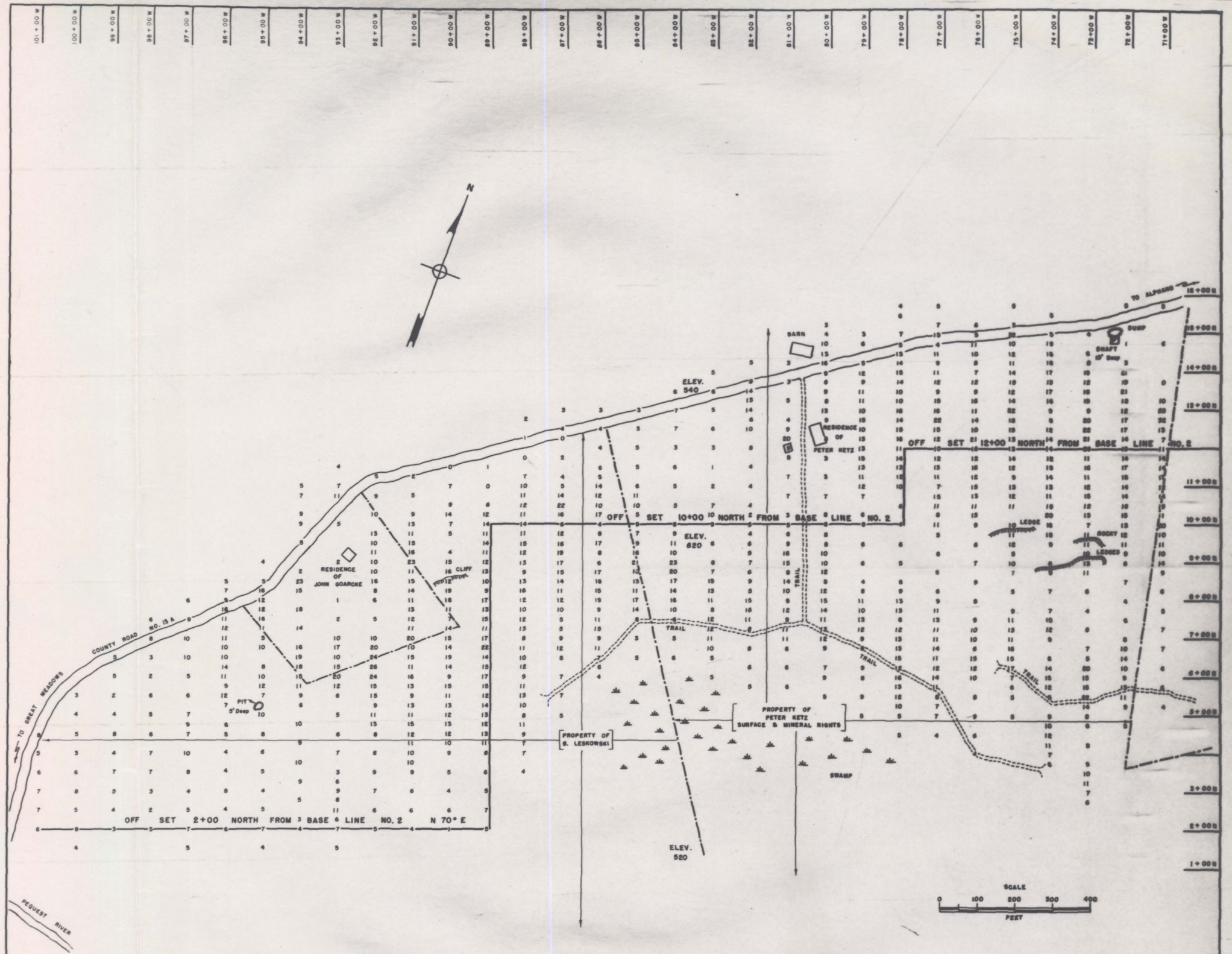
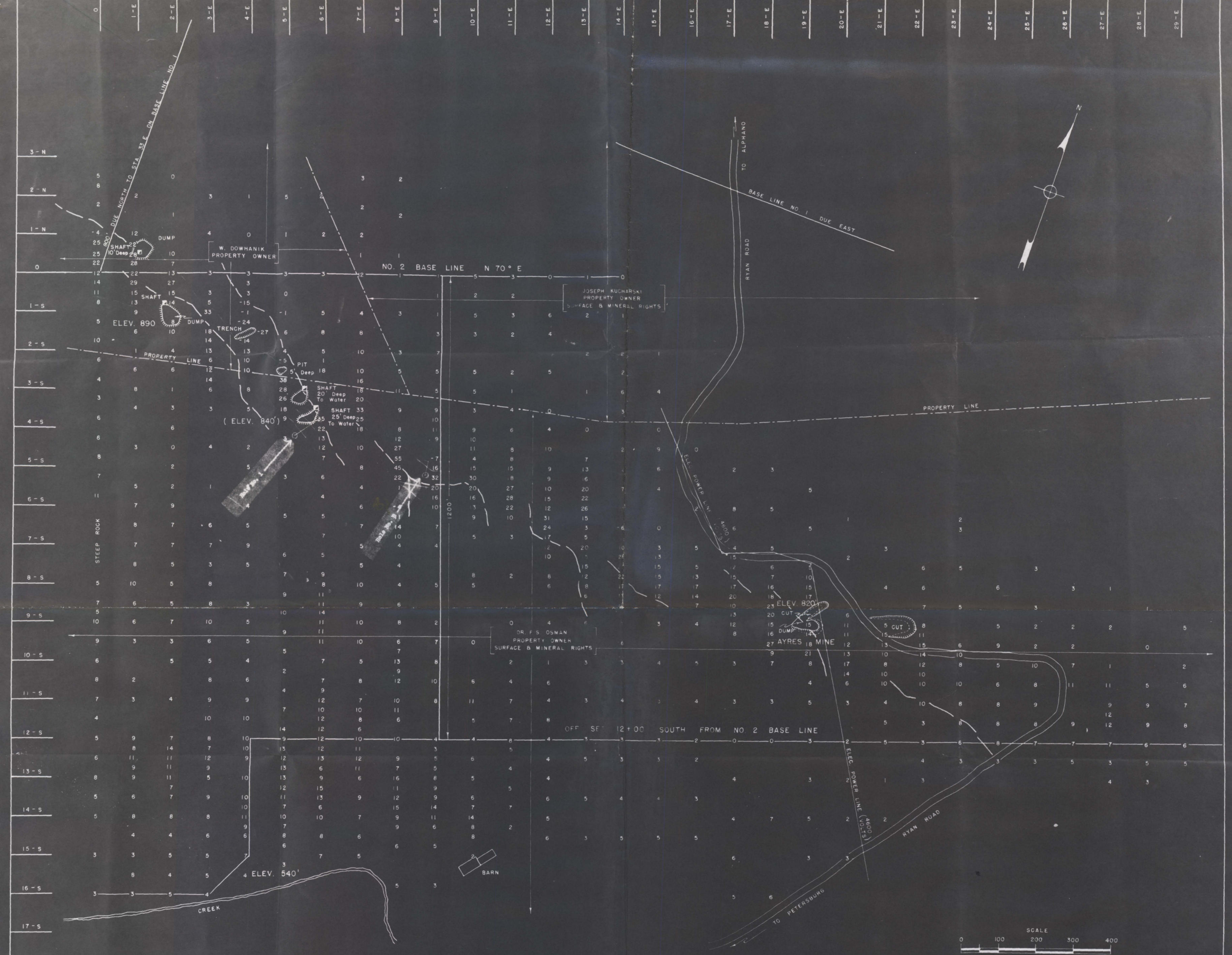


FIGURE 2—PLATE 6—OFF SET FROM BASE LINE 2
DIP NEEDLE SURVEY—CUMMINS MINE AREA
INDEPENDENCE TOWNSHIP, WARREN COUNTY, NEW JERSEY



| Hole No. | Bearing | Dip | Inclined Depth | From | To | % Total Iron |
|----------|-----------|-----|----------------|--------|---------|--------------|
| 1 | N 35° E | 45° | 270' | 155'9" | 159'10" | 22.50 |
| | | | | 163'5" | 164'10" | 18.35 |
| | | | | 165'2" | 169'6" | 19.00 |
| | | | | 196'8" | 196'1" | 22.98 |
| 8 | N 7°30' W | 45° | 68' | 14'4" | 22'7" | 17.7 |

FIGURE 2 — PLATE 3 — BASE LINE NO. 2
 DIP NEEDLE SURVEY — CUMMINS MINE AREA SHOWING AYRES MINE
 INDEPENDENCE TOWNSHIP, WARREN COUNTY, NEW JERSEY

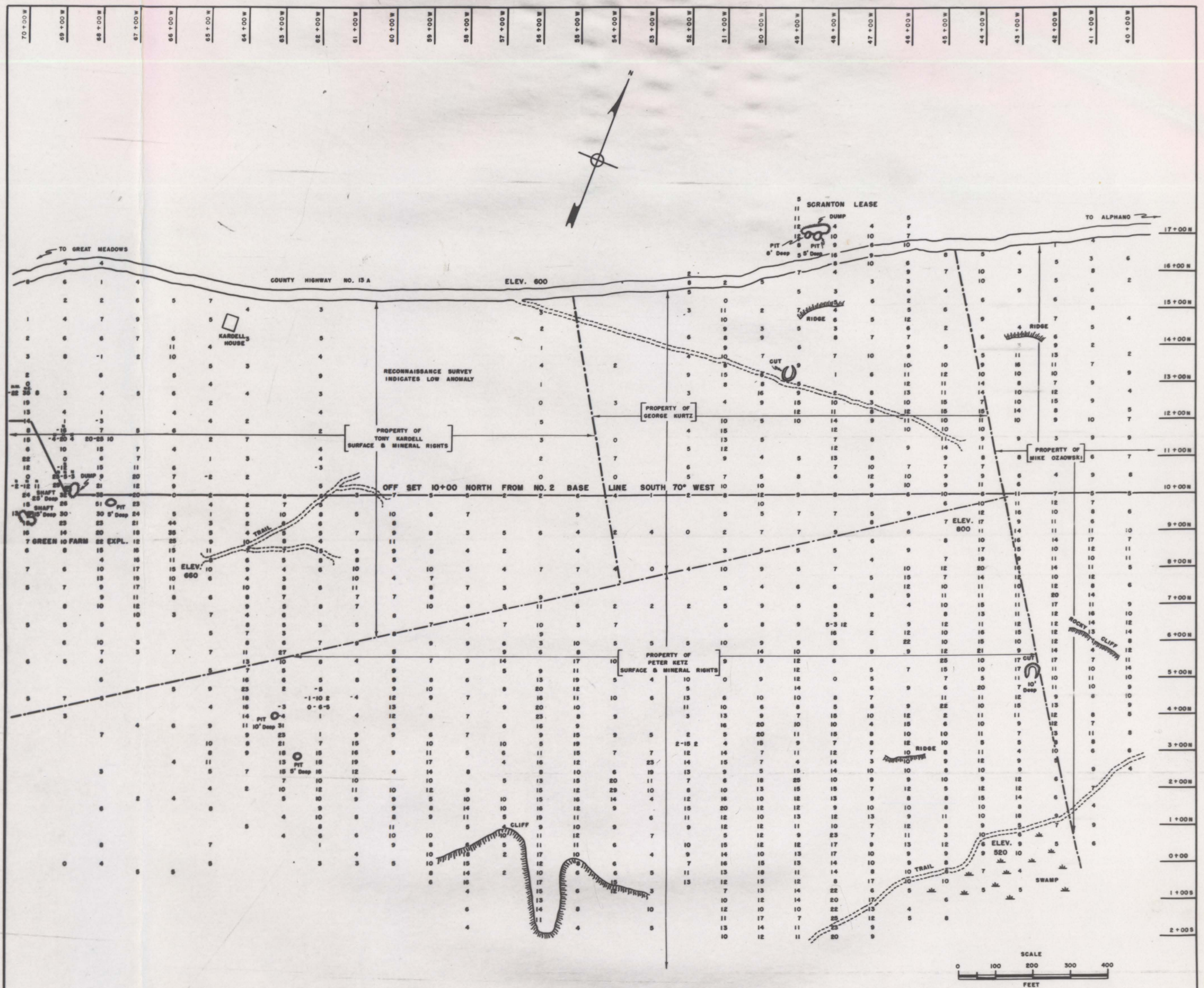
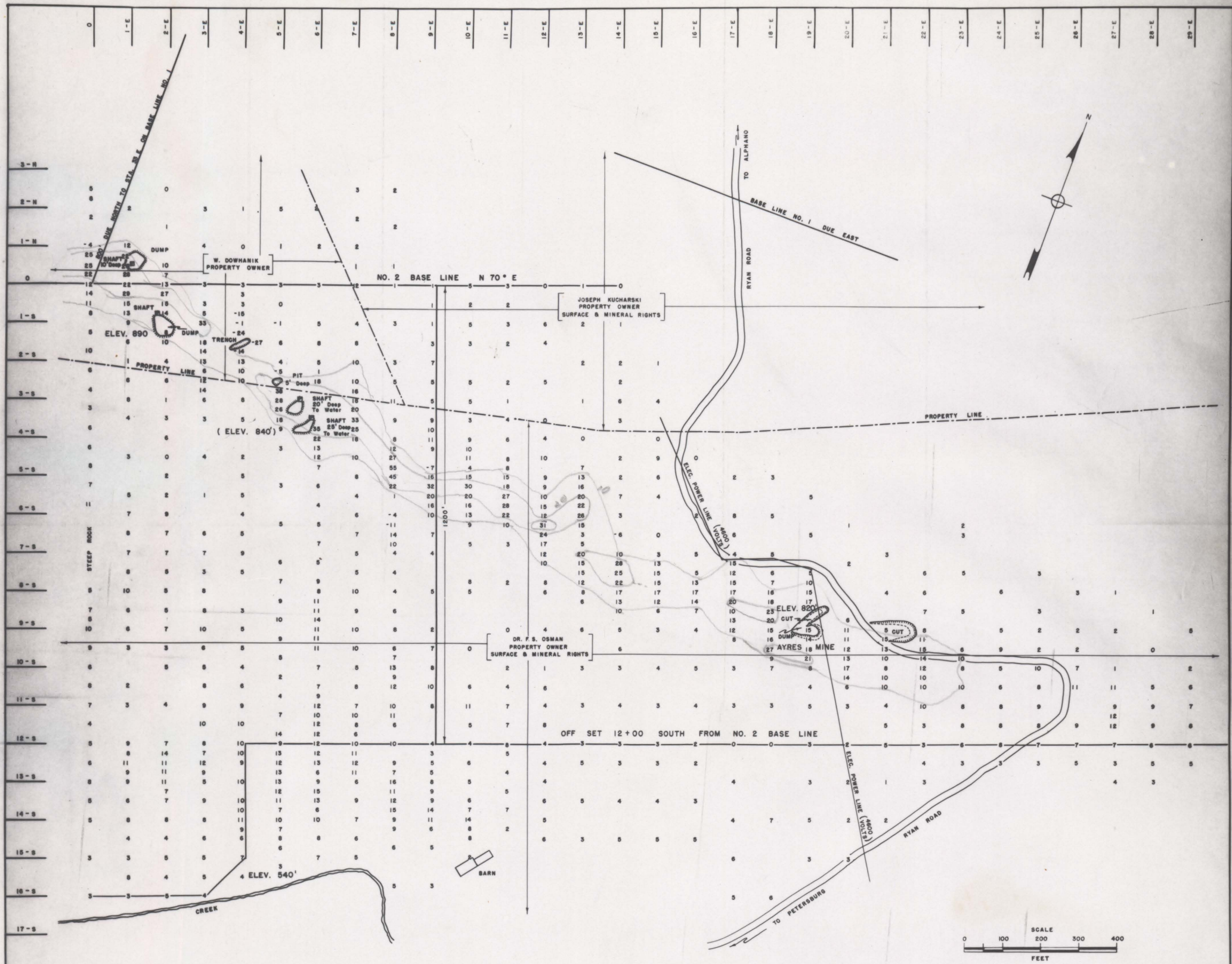


FIGURE 2—PLATE 5—OFF SET FROM BASE LINE 2
 DIP NEEDLE SURVEY—CUMMINS MINE AREA
 INDEPENDENCE TOWNSHIP, WARREN COUNTY, NEW JERSEY



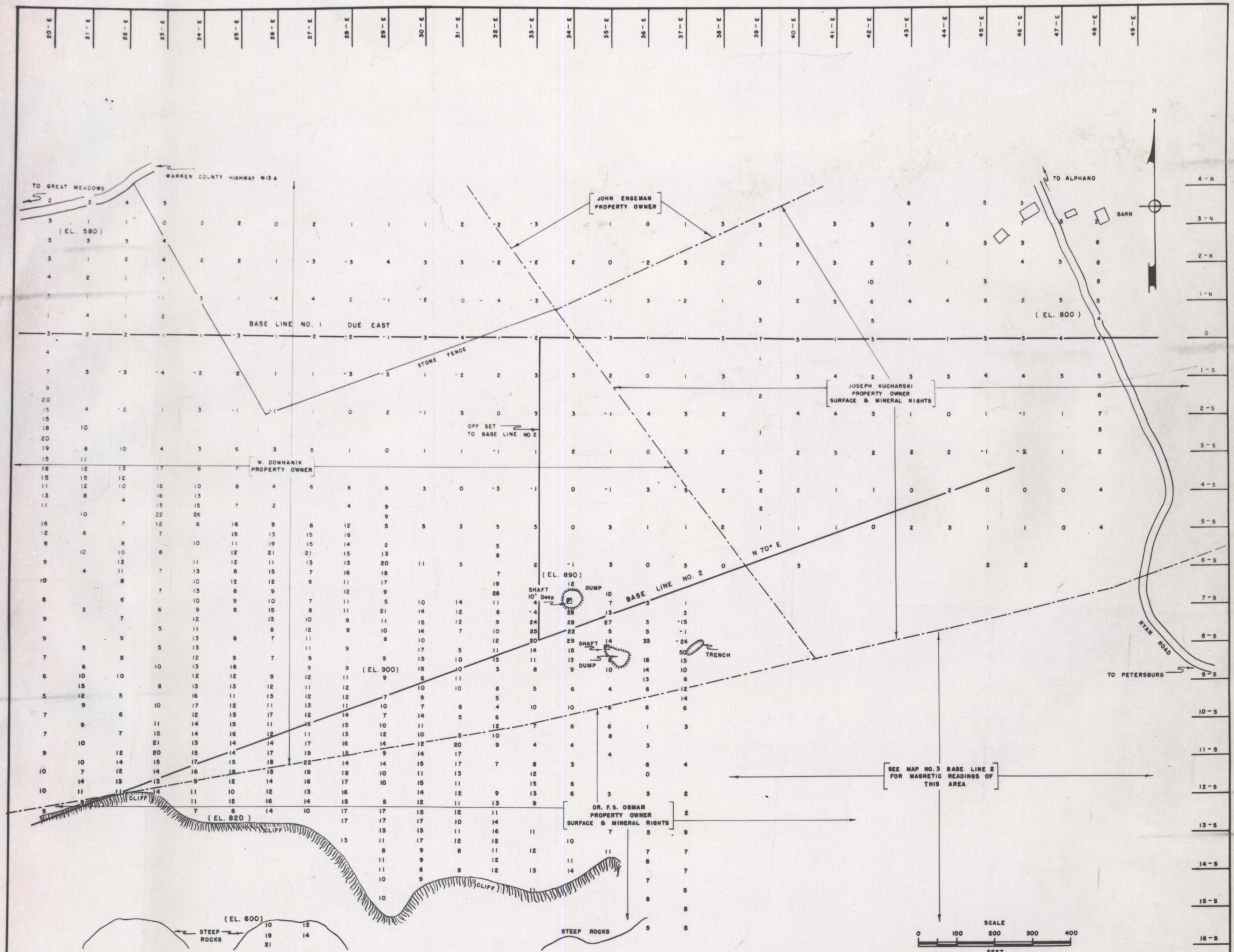


FIGURE 2 — PLATE 2 — BASE LINES 1 and 2
 DIP NEEDLE SURVEY — CUMMINS MINE AREA
 INDEPENDENCE TOWNSHIP, WARREN COUNTY, NEW JERSEY

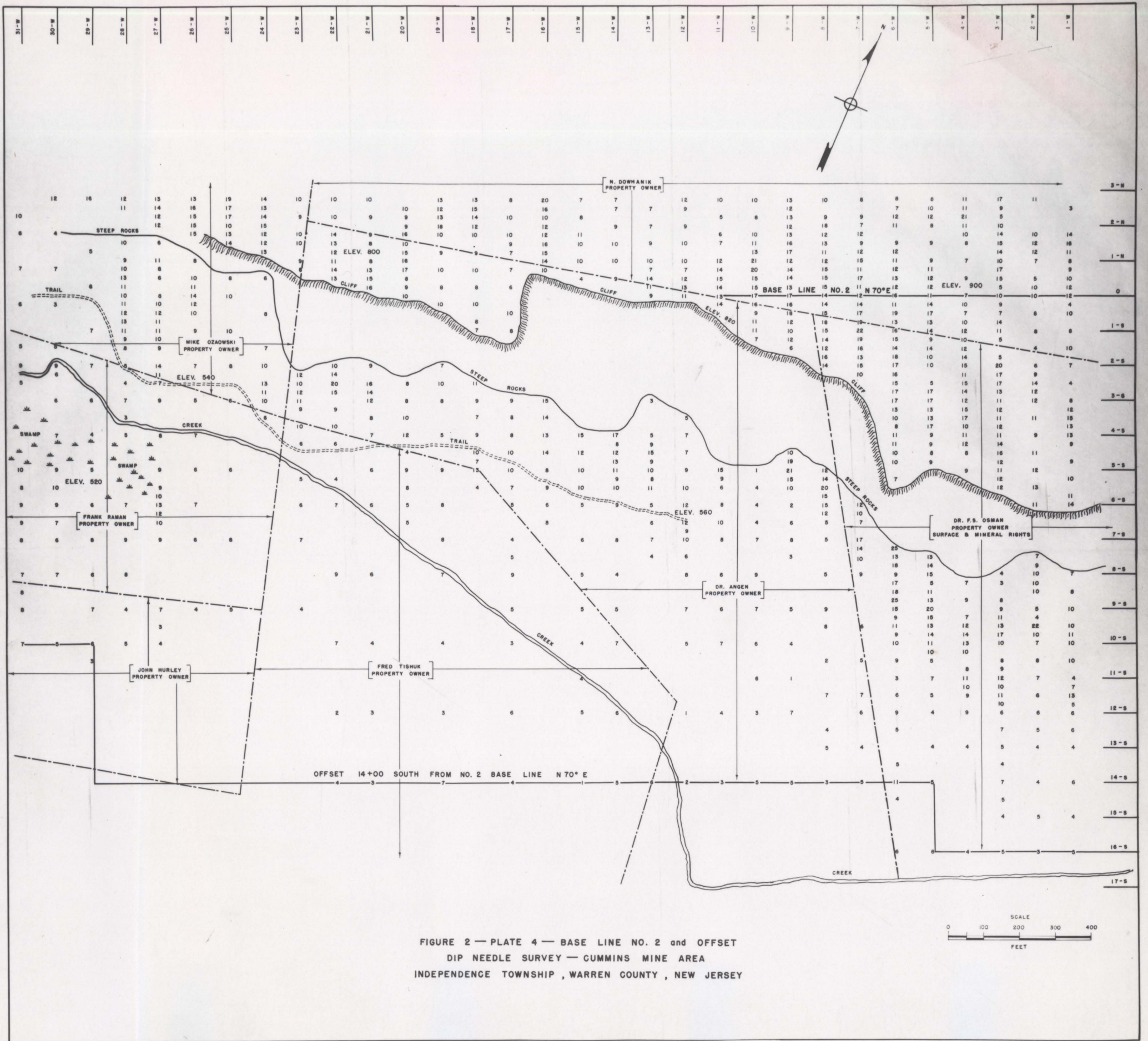
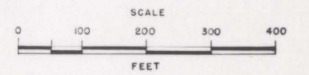
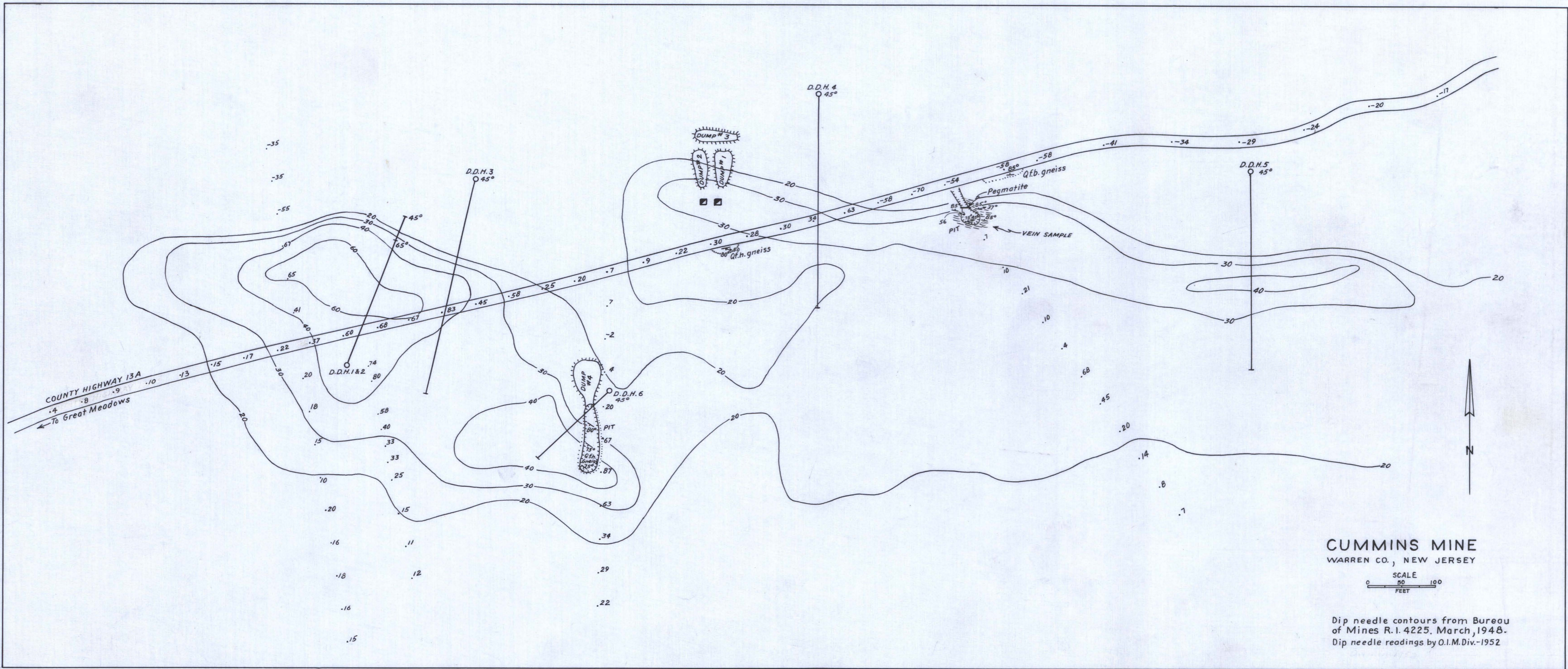


FIGURE 2 — PLATE 4 — BASE LINE NO. 2 and OFFSET
 DIP NEEDLE SURVEY — CUMMINS MINE AREA
 INDEPENDENCE TOWNSHIP, WARREN COUNTY, NEW JERSEY





CUMMINS MINE
WARREN CO., NEW JERSEY



Dip needle contours from Bureau of Mines R.I. 4225, March, 1948.
Dip needle readings by O.I.M.Div.-1952

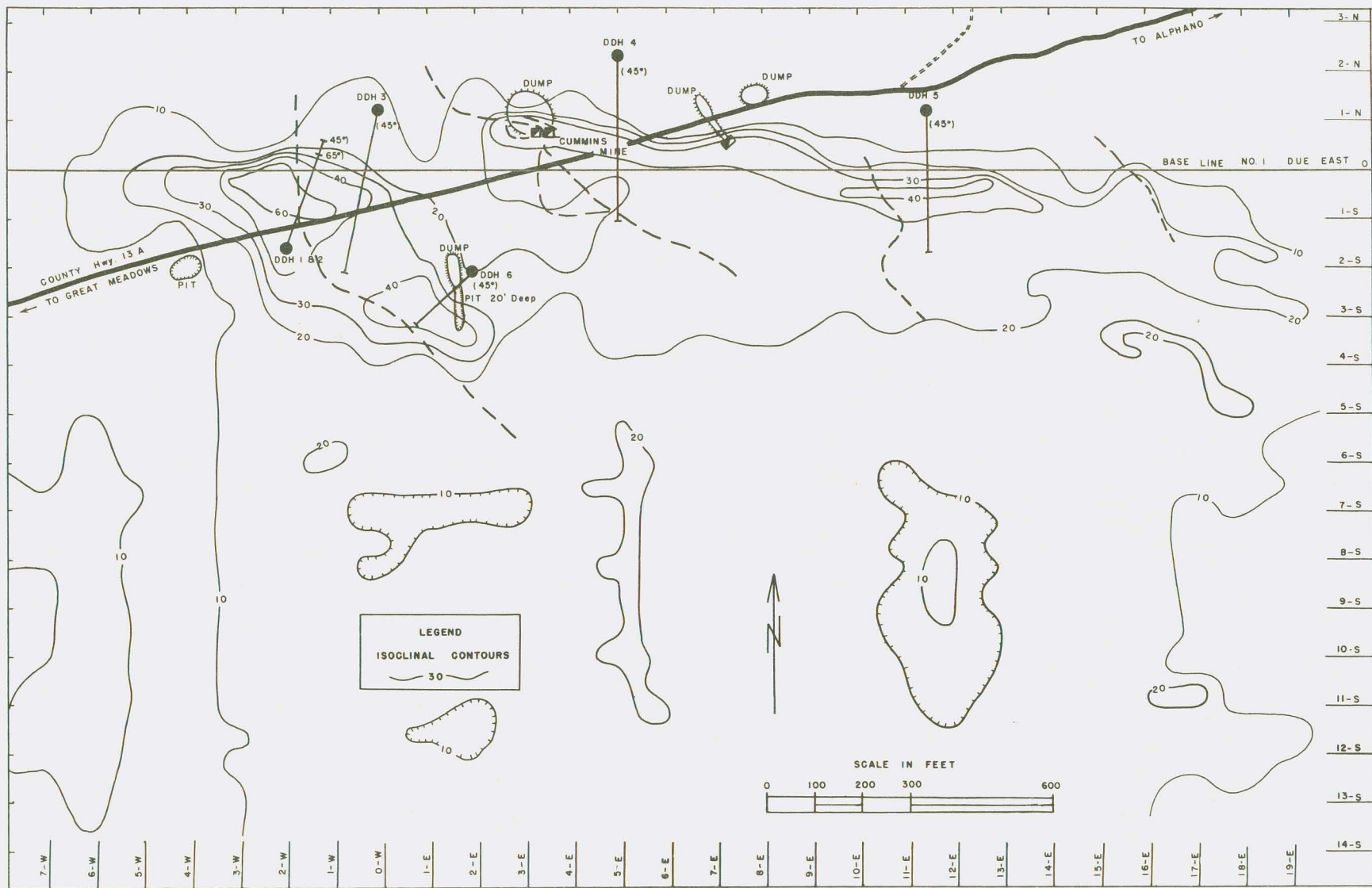
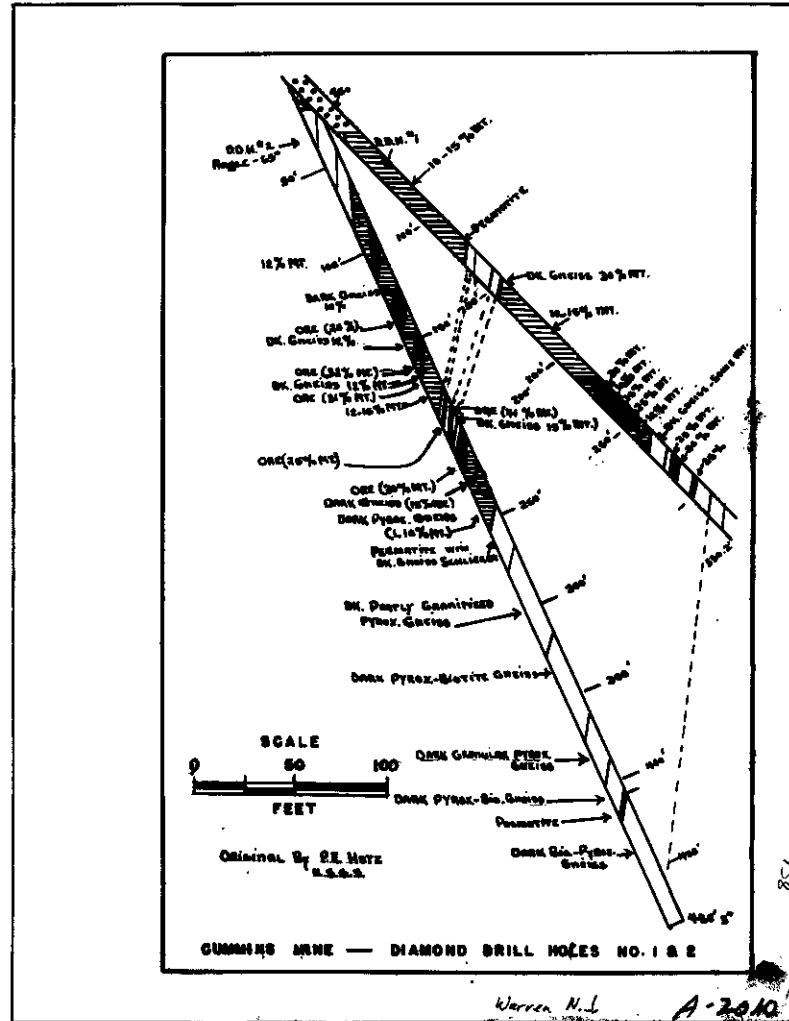


Figure 2. - Cummins mine area.



30002 422 14.5.1 300851