



State of New Jersey
Department of Environmental Protection
Geological Survey



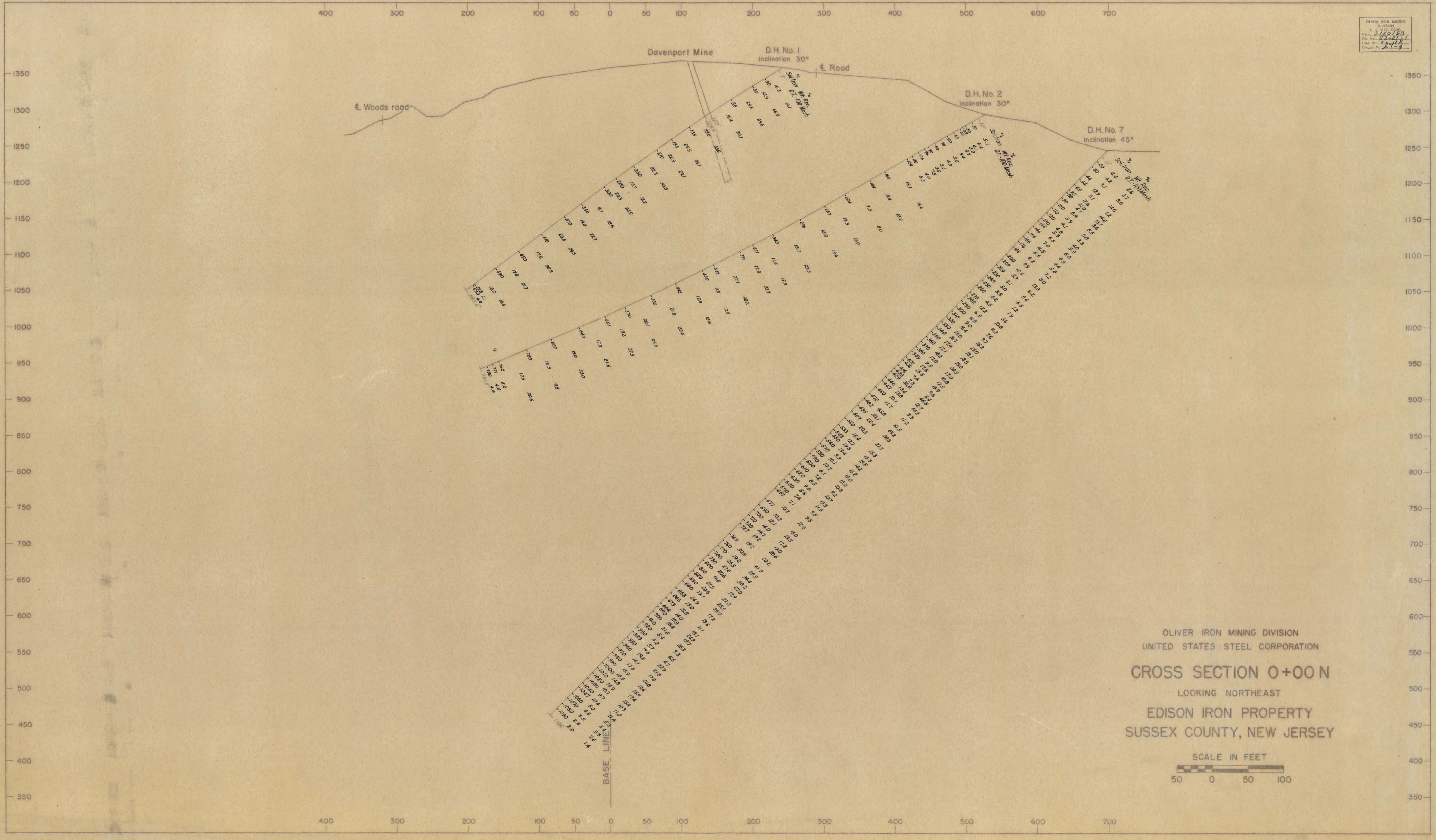
Information Disclaimer

The State of New Jersey makes great effort to provide secure, accurate and complete information. However, portions of the information contained here may be incorrect or not current.

The State of New Jersey, its officers, employees or agents shall not be liable for damages or losses of any kind arising out of or in connection with the use or performance of information, including but not limited to, damages or losses caused by reliance upon the accuracy or timeliness of any such information, or damages incurred from the viewing, distributing, or copying of those materials.

The materials and information provided here are provided "as is." No warranty of any kind, implied, expressed, or statutory, including but not limited to the warranties of non-infringement of third party rights, title, merchantability, fitness for a particular purpose, and freedom from computer virus, is given with respect to the contents of this document.

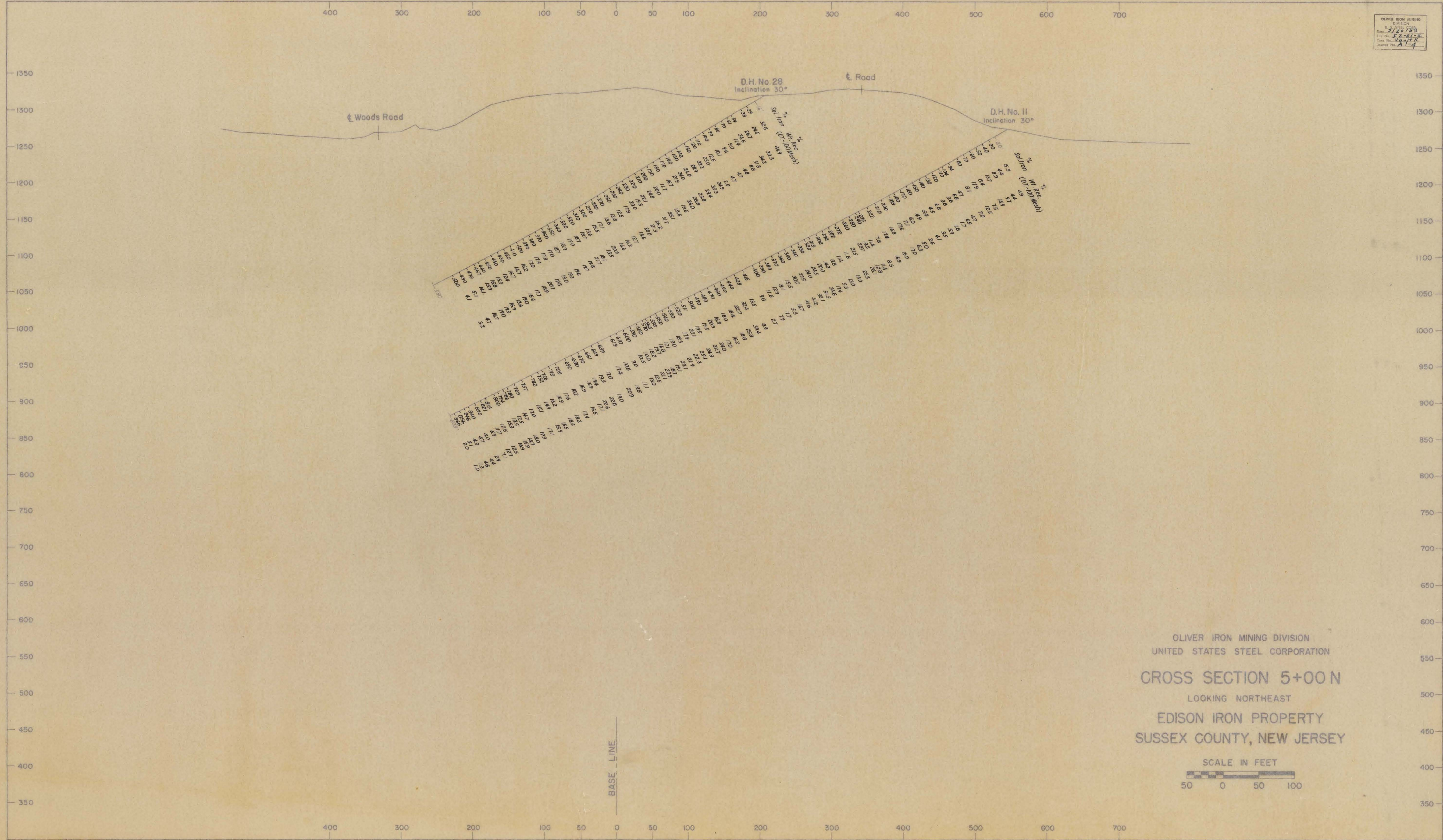
OLIVER IRON MINING DIVISION
 U. S. STEEL CORP.
 Date: 3/20/53
 File No. 52-21-1
 Case No. 4411K
 Drawn No. A1-7



OLIVER IRON MINING DIVISION
 UNITED STATES STEEL CORPORATION
CROSS SECTION 0+00 N
 LOOKING NORTHEAST
 EDISON IRON PROPERTY
 SUSSEX COUNTY, NEW JERSEY

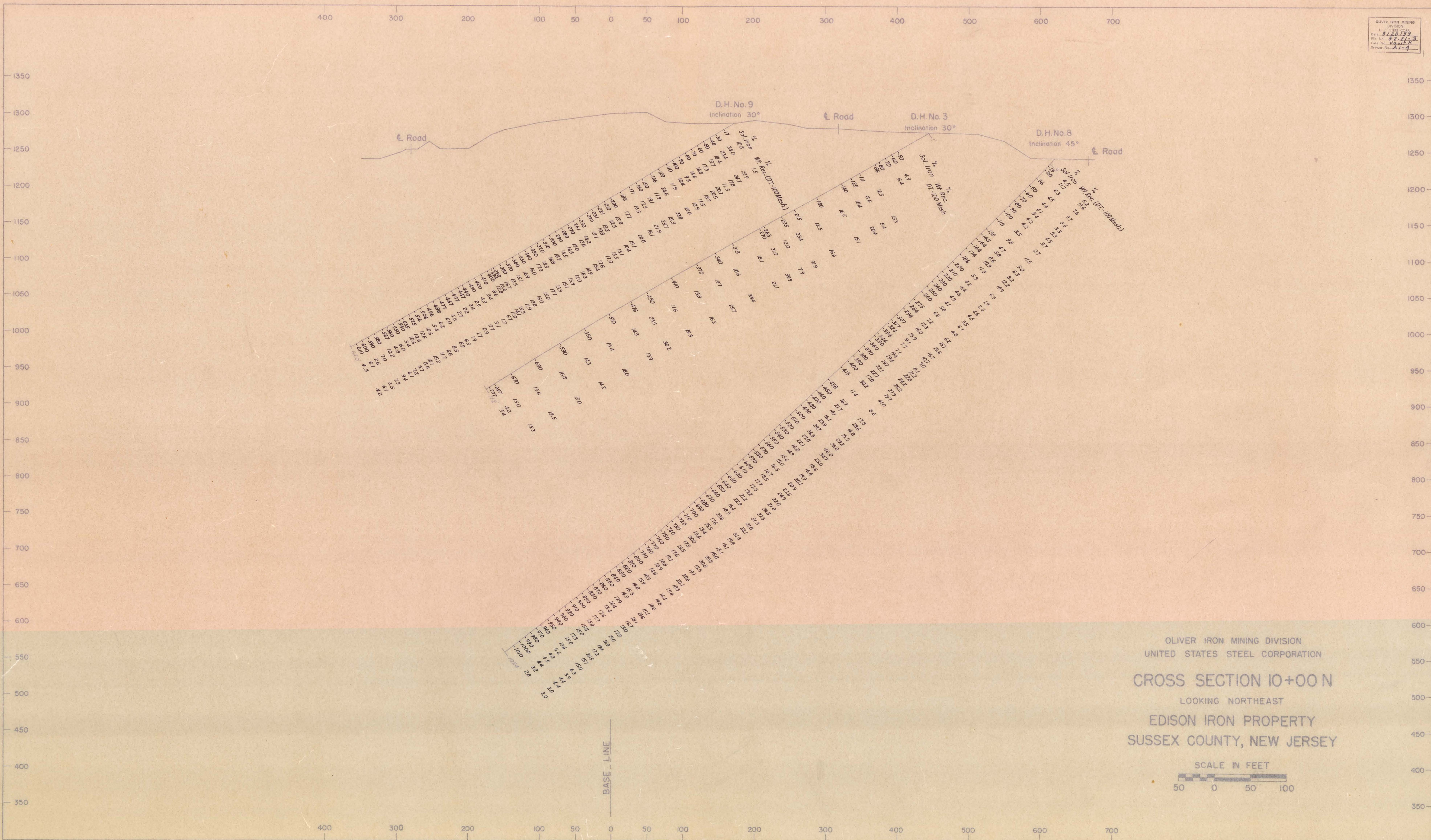


OLIVER IRON MINING DIVISION
 DIVISION
 Date: 5/22/25
 File No: 52-61-2
 Case No: V941K
 Drawing No: A1-4

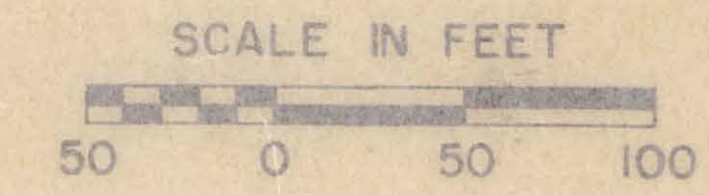


OLIVER IRON MINING DIVISION
 UNITED STATES STEEL CORPORATION
CROSS SECTION 5+00 N
 LOOKING NORTHEAST
 EDISON IRON PROPERTY
 SUSSEX COUNTY, NEW JERSEY

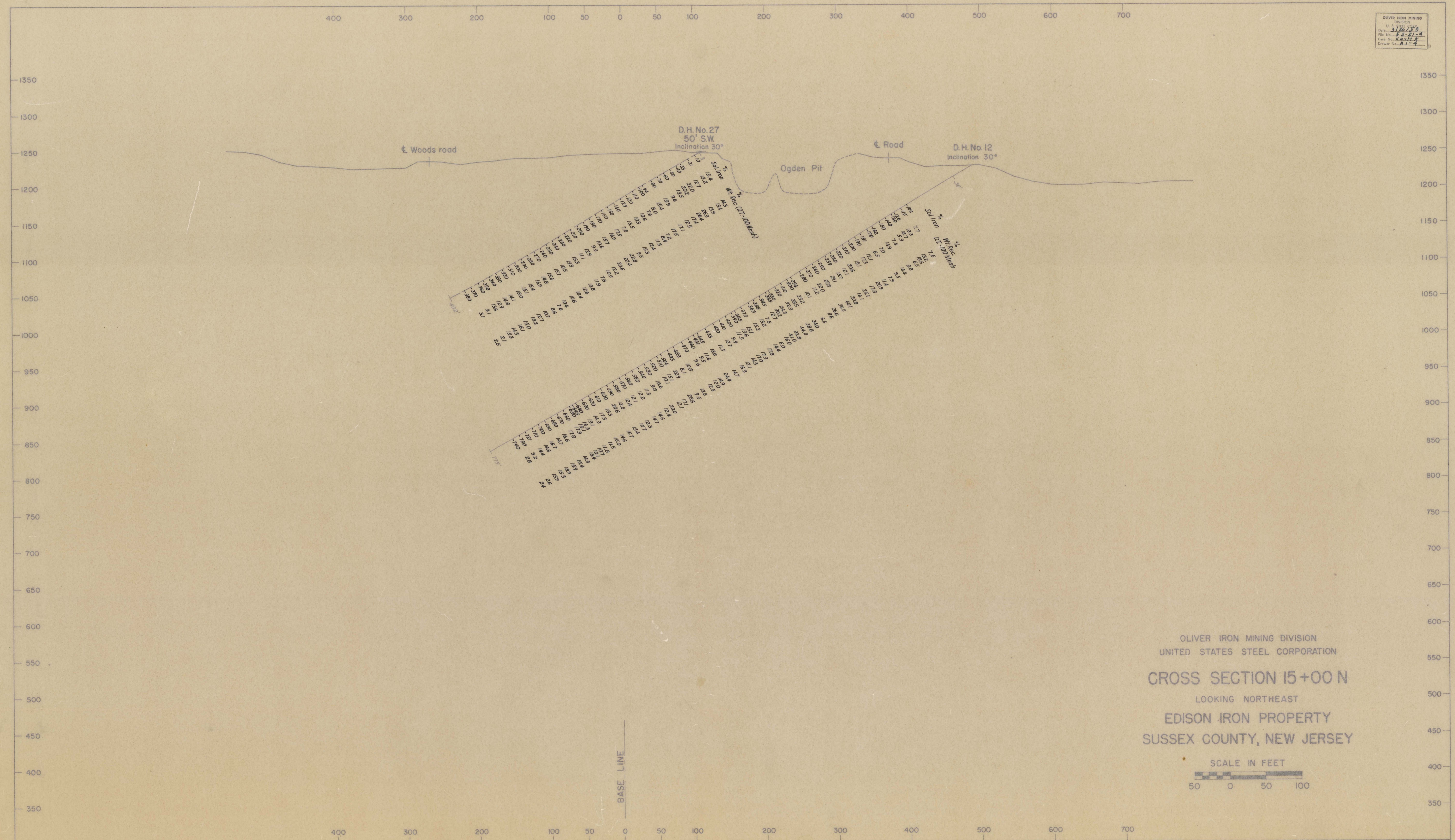




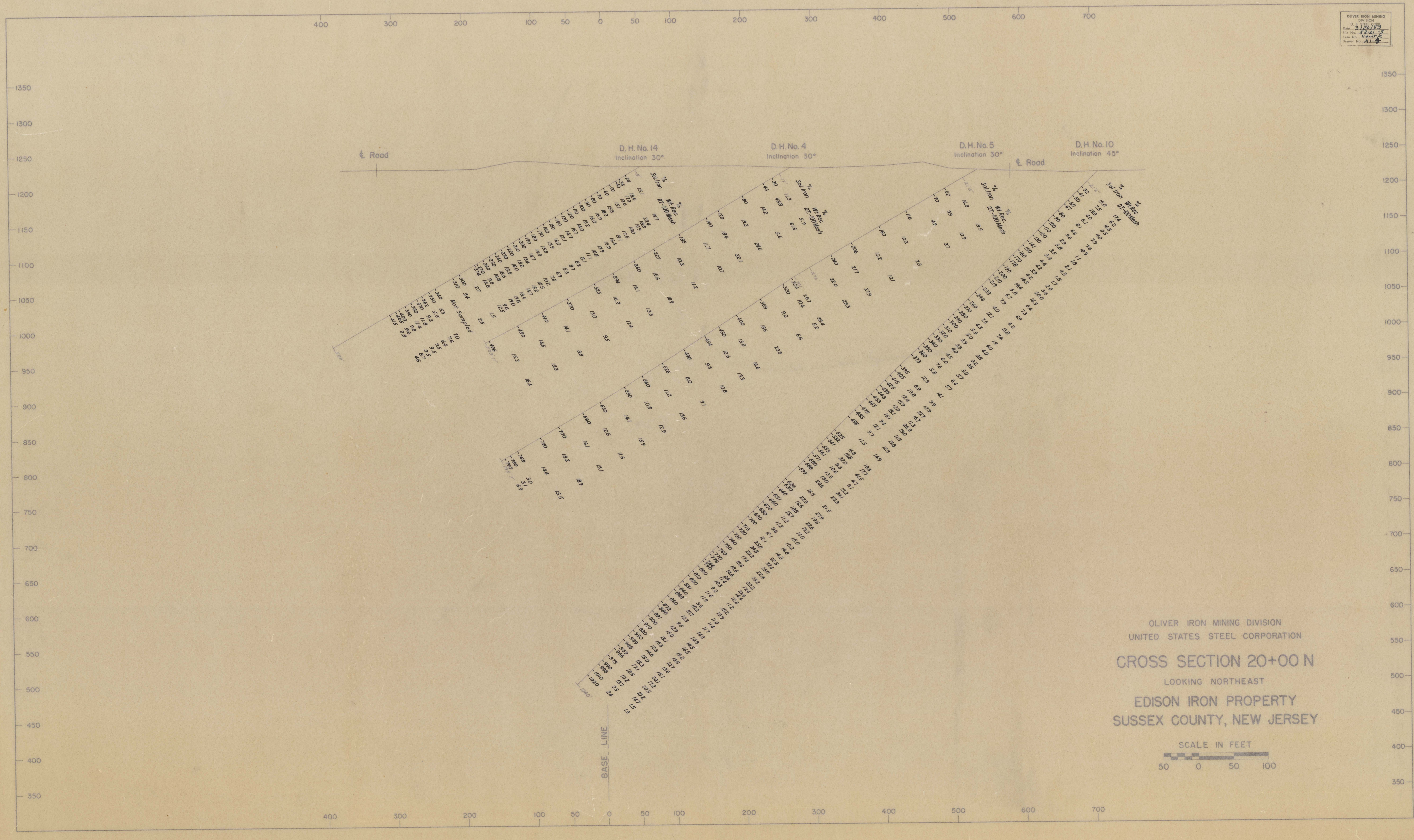
OLIVER IRON MINING DIVISION
 UNITED STATES STEEL CORPORATION
CROSS SECTION IO+00 N
 LOOKING NORTHEAST
 EDISON IRON PROPERTY
 SUSSEX COUNTY, NEW JERSEY



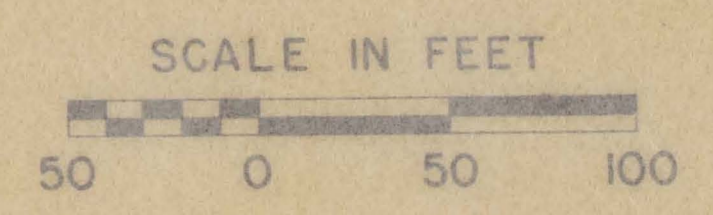
OLIVER IRON MINING DIVISION
U. S. GEO. SURV.
Date: 3/18/39
File No. 52-21-9
Case No. 100114
Drawn No. A1-4



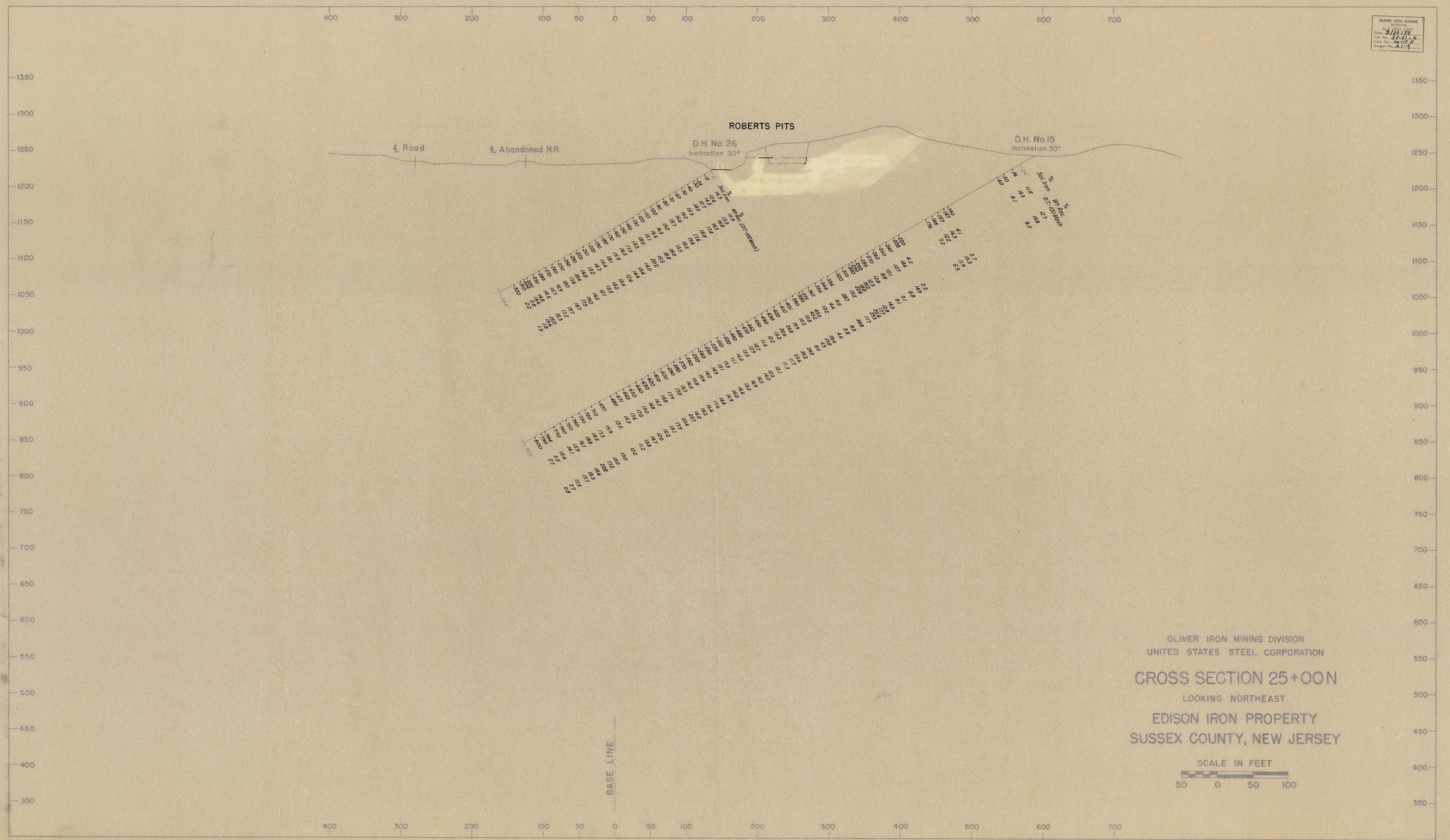
OLIVER IRON MINING DIVISION
 U. S. STEEL CORP.
 Date: 5/20/53
 File No. 3641
 Case No. V-117
 Drawing No. A-18



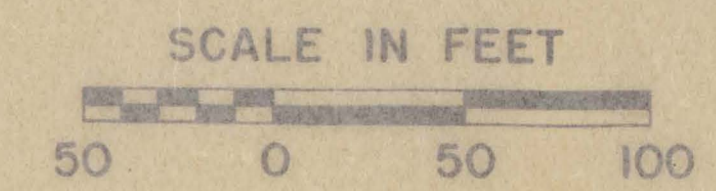
OLIVER IRON MINING DIVISION
 UNITED STATES STEEL CORPORATION
CROSS SECTION 20+00 N
 LOOKING NORTHEAST
 EDISON IRON PROPERTY
 SUSSEX COUNTY, NEW JERSEY



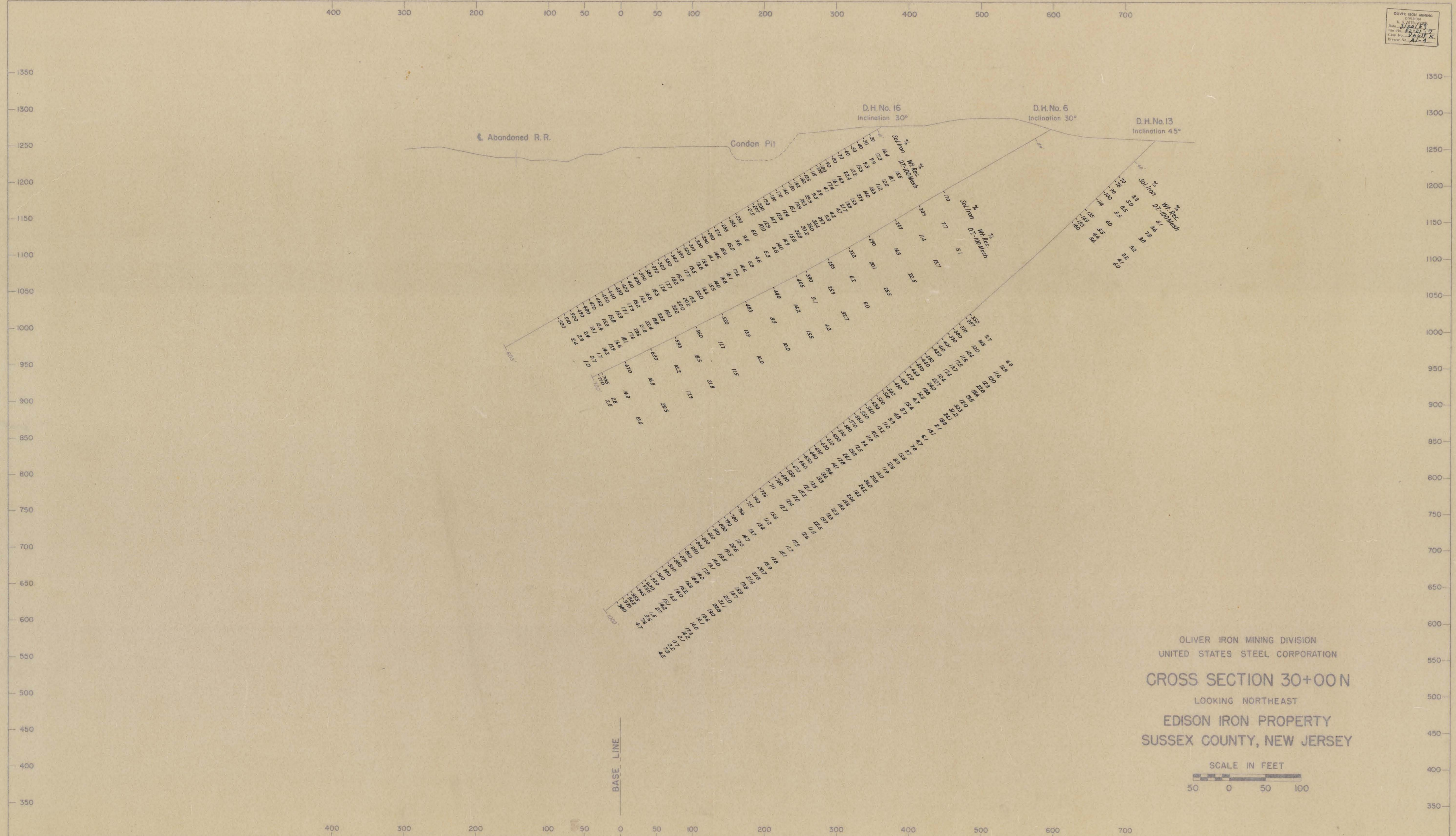
OLIVER IRON MINING
 DIVISION
 UNITED STATES STEEL CORP.
 Date: 3/20/39
 File No. 12-21-6
 Case No. Va-11-1
 Designer No. A-1-4



OLIVER IRON MINING DIVISION
 UNITED STATES STEEL CORPORATION
CROSS SECTION 25+00N
 LOOKING NORTHEAST
 EDISON IRON PROPERTY
 SUSSEX COUNTY, NEW JERSEY



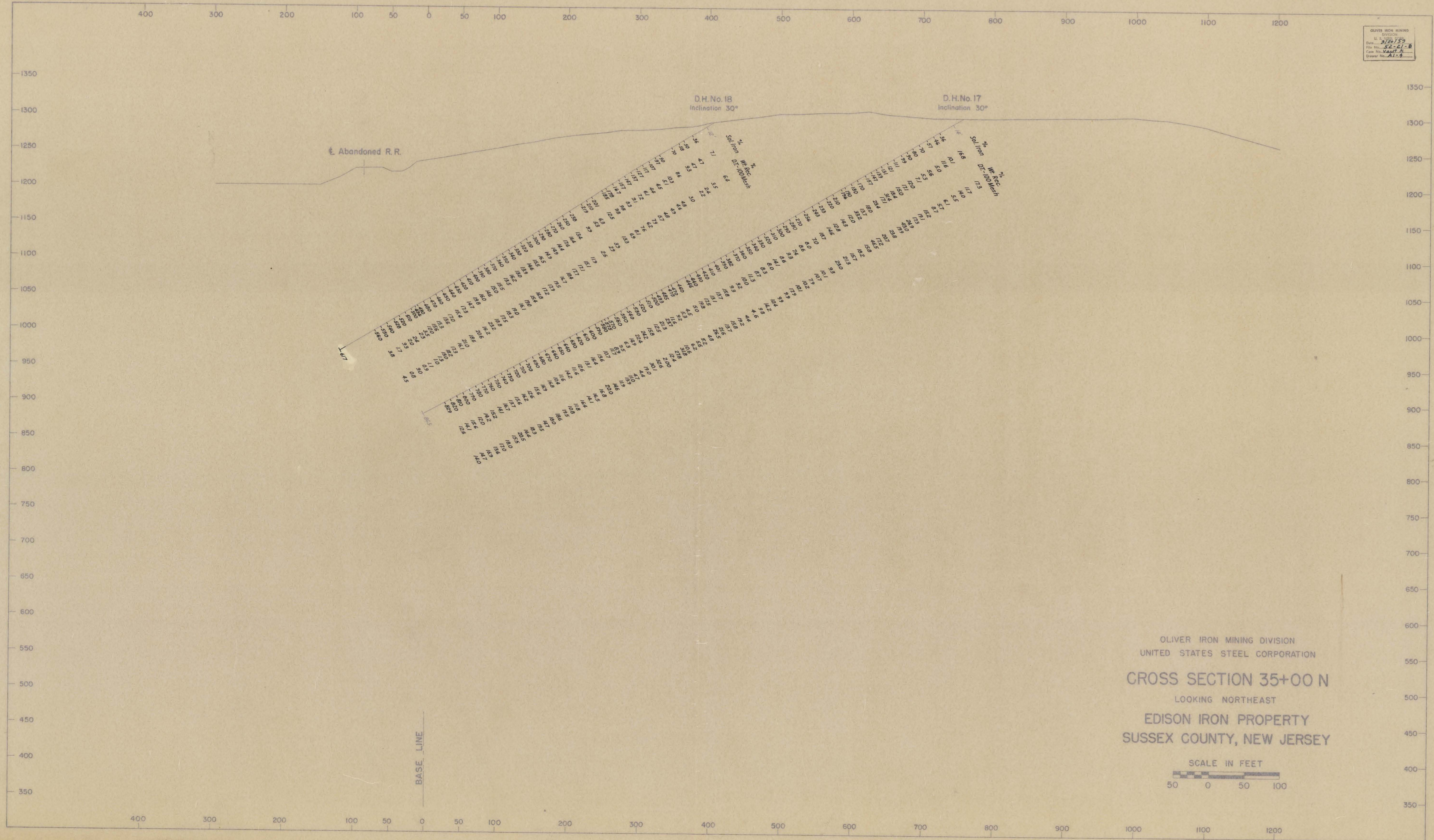
OLIVER IRON MINING DIVISION
 U. S. STEEL CORP.
 Date: 3/22/34
 File No.: 32-21-7
 Case No.: V. 0117 K
 Drawer No.: A1-4



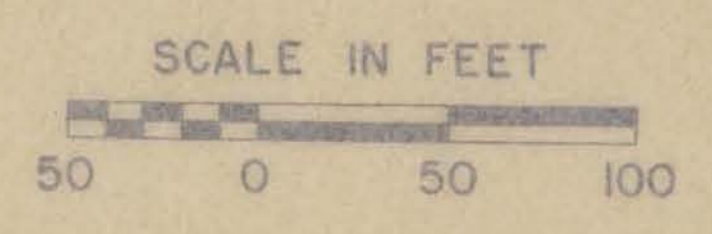
OLIVER IRON MINING DIVISION
 UNITED STATES STEEL CORPORATION
CROSS SECTION 30+00 N
 LOOKING NORTHEAST
 EDISON IRON PROPERTY
 SUSSEX COUNTY, NEW JERSEY



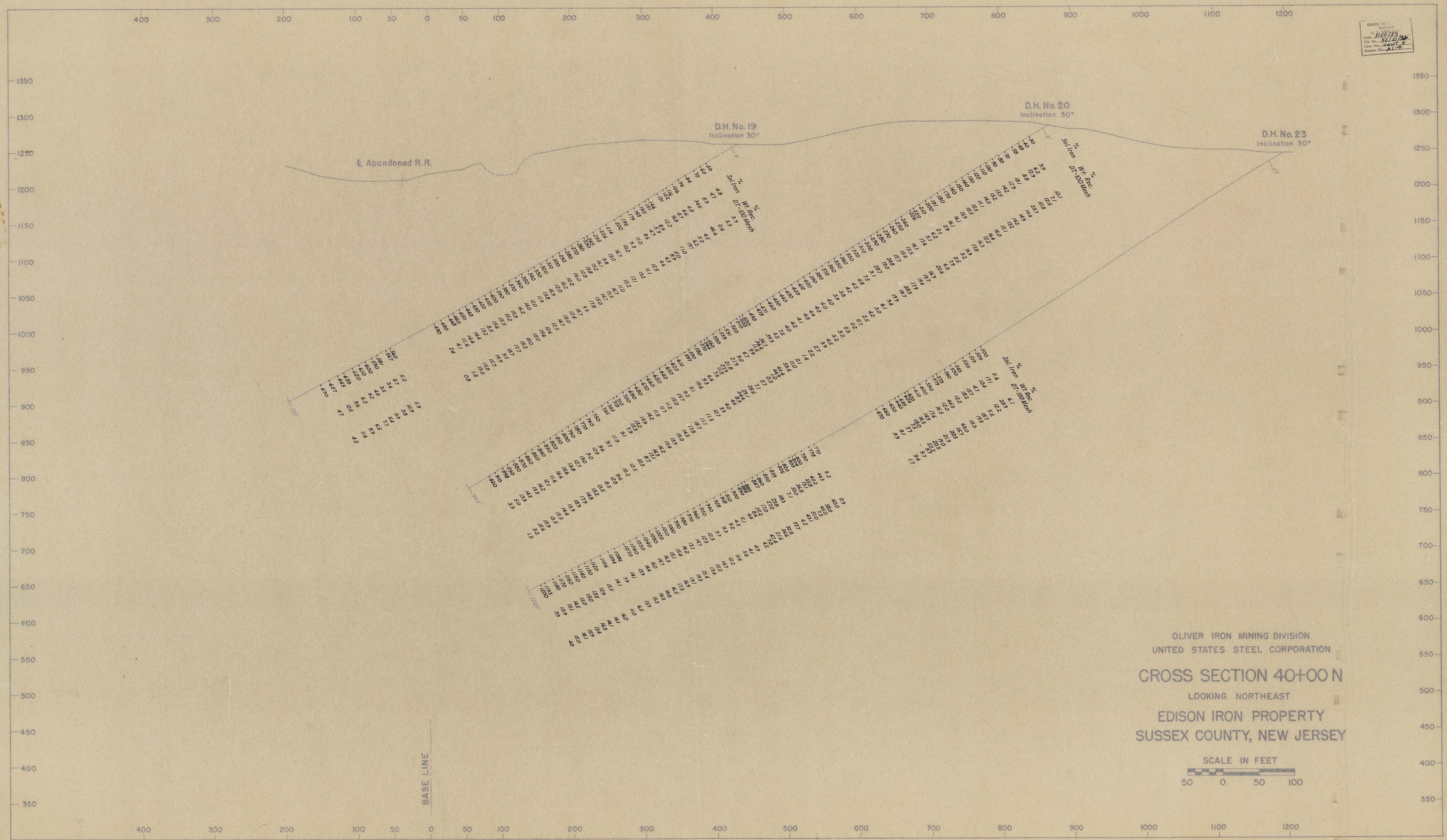
OLIVER IRON MINING DIVISION
 U. S. GEOLOGICAL SURVEY
 Date: 3/15/35
 File No. 52-61-8
 Case No. Vault 5
 Drawn No. A1-4



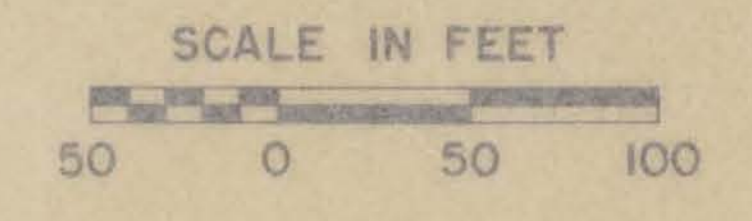
OLIVER IRON MINING DIVISION
 UNITED STATES STEEL CORPORATION
CROSS SECTION 35+00 N
 LOOKING NORTHEAST
 EDISON IRON PROPERTY
 SUSSEX COUNTY, NEW JERSEY



OLIVER IRON MINING DIVISION
 UNITED STATES STEEL CORPORATION
 Date: 2/20/59
 File No.: 52-2178
 Case No.: VAM-11-4
 Drawn By: A.L.A.

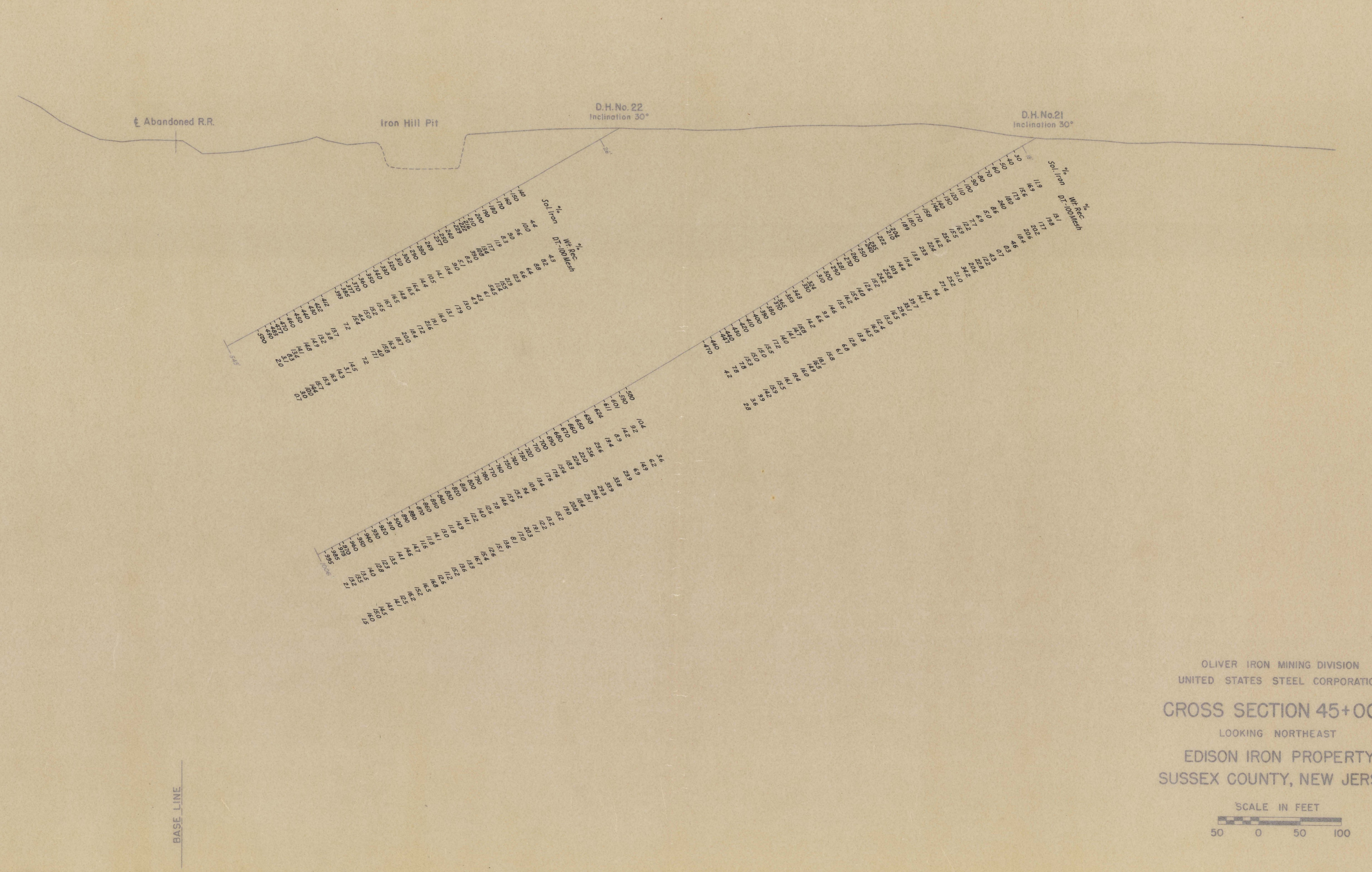


OLIVER IRON MINING DIVISION
 UNITED STATES STEEL CORPORATION
CROSS SECTION 40+00 N
 LOOKING NORTHEAST
 EDISON IRON PROPERTY
 SUSSEX COUNTY, NEW JERSEY

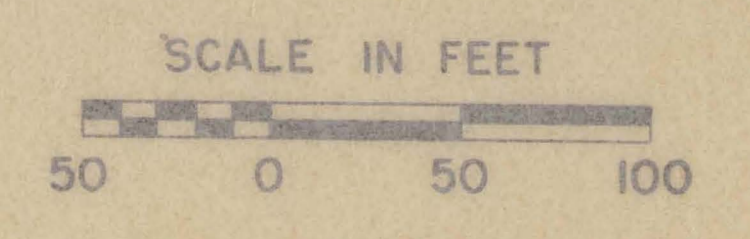


OLIVER IRON MINING DIVISION
 U.S. STEEL CORPORATION
 Date: 5/22/19
 Drawn by: J. J. ...
 Checked by: ...
 Project No. 45+00 N

200 100 50 0 50 100 200 300 400 500 600 700 800 900 1000 1100 1200 1300 1400

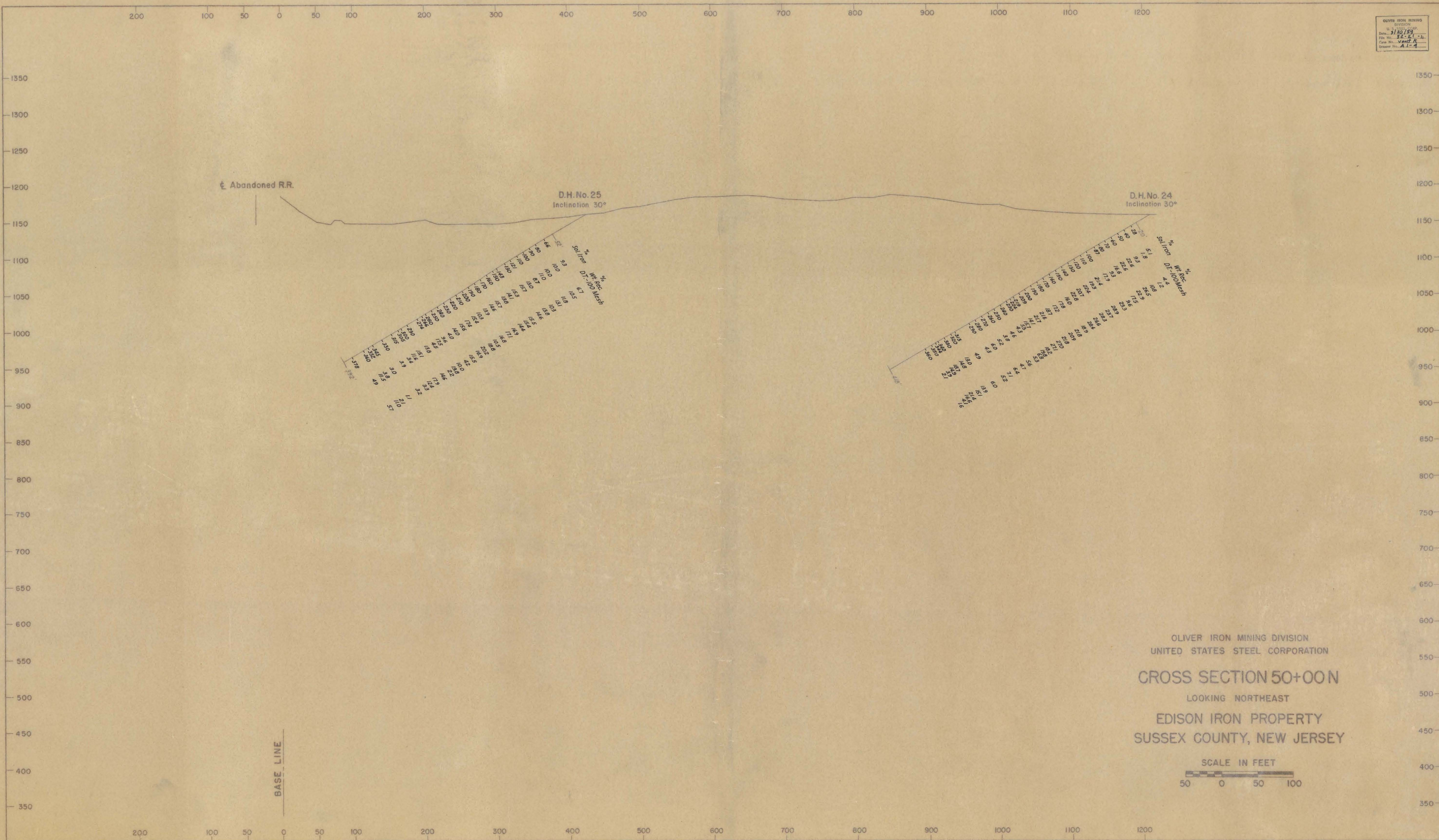


OLIVER IRON MINING DIVISION
 UNITED STATES STEEL CORPORATION
CROSS SECTION 45+00 N
 LOOKING NORTHEAST
 EDISON IRON PROPERTY
 SUSSEX COUNTY, NEW JERSEY



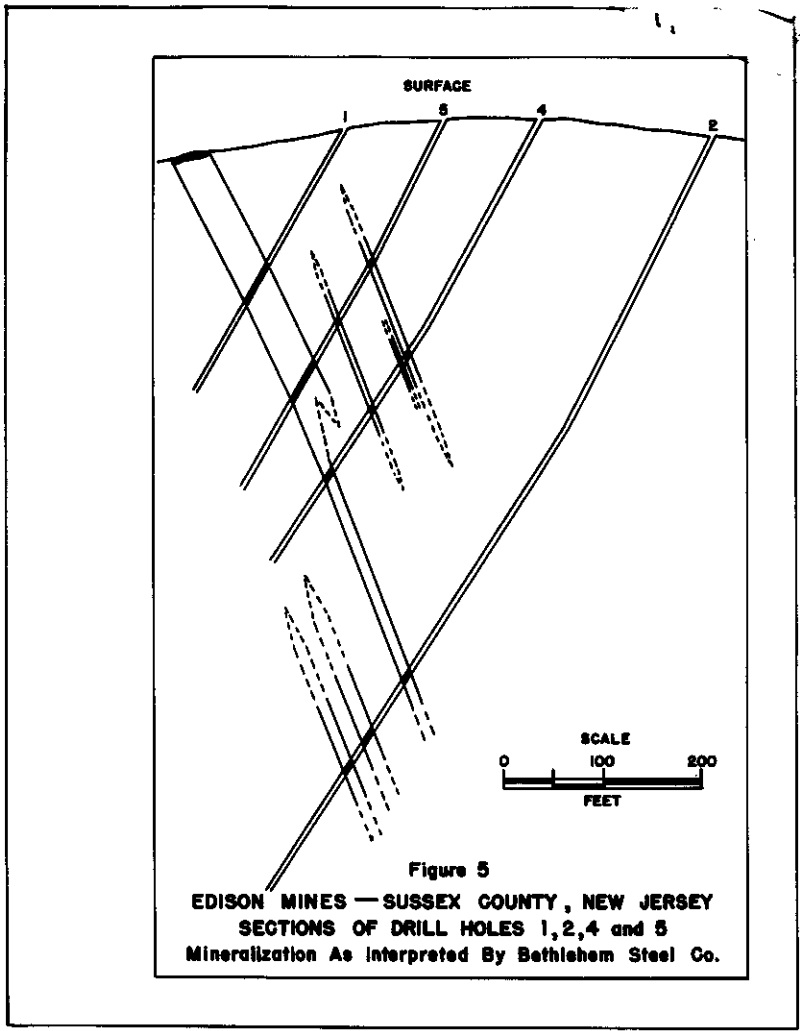
200 100 50 0 50 100 200 300 400 500 600 700 800 900 1000 1100 1200 1300 1400

OLIVER IRON MINING DIVISION
 DIVISION
 Date: 3/20/59
 File No. 52-51-11
 Case No. 5007 K
 Sheet No. A1-4



OLIVER IRON MINING DIVISION
 UNITED STATES STEEL CORPORATION
CROSS SECTION 50+00 N
 LOOKING NORTHEAST
 EDISON IRON PROPERTY
 SUSSEX COUNTY, NEW JERSEY





30002 404 14.5.1 300833