



State of New Jersey
Department of Environmental Protection
Geological Survey



Information Disclaimer

The State of New Jersey makes great effort to provide secure, accurate and complete information. However, portions of the information contained here may be incorrect or not current.

The State of New Jersey, its officers, employees or agents shall not be liable for damages or losses of any kind arising out of or in connection with the use or performance of information, including but not limited to, damages or losses caused by reliance upon the accuracy or timeliness of any such information, or damages incurred from the viewing, distributing, or copying of those materials.

The materials and information provided here are provided "as is." No warranty of any kind, implied, expressed, or statutory, including but not limited to the warranties of non-infringement of third party rights, title, merchantability, fitness for a particular purpose, and freedom from computer virus, is given with respect to the contents of this document.

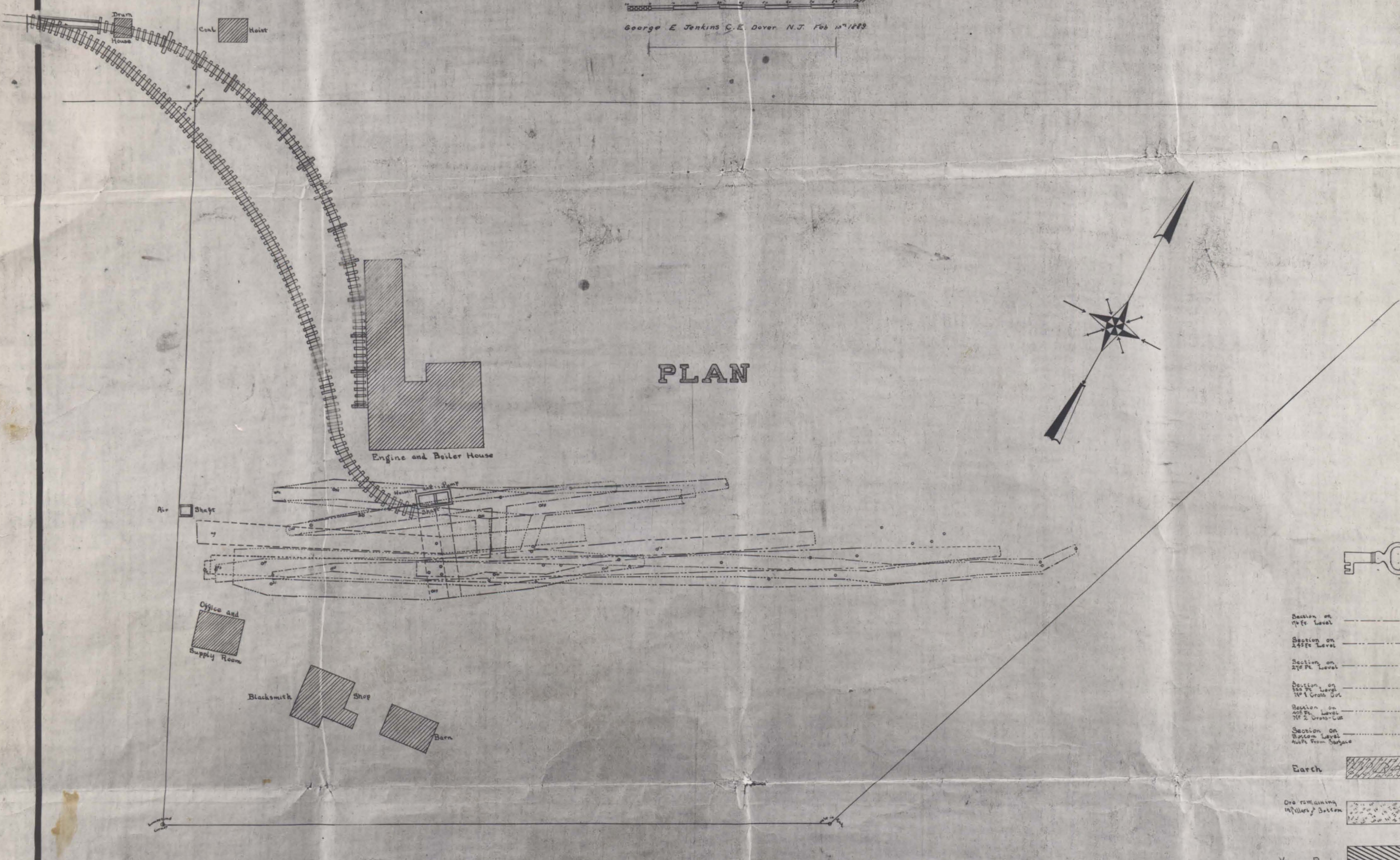
MAP OF THE
CRANE IRON CO'S
SCHOFIELD MINE

MORRIS CO. N.J.

1890

SCALE 40 FEET TO THE INCH

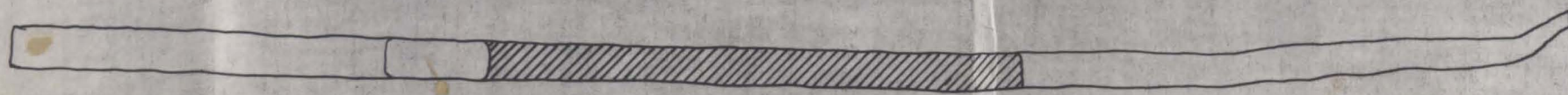
George E. Jenkins C.E. Dover, N.J. Feb. 17/1890



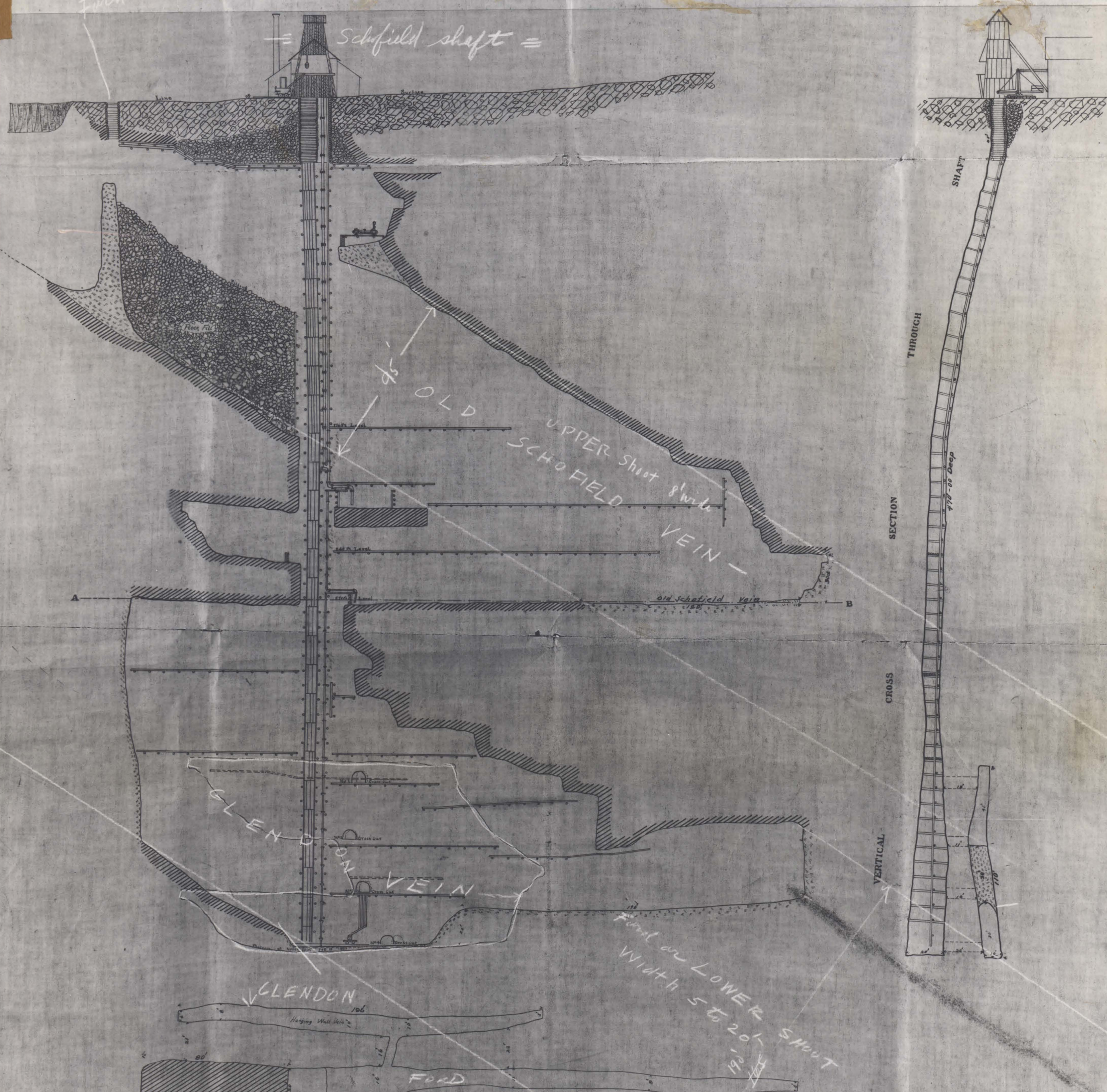
PLAN

- Section on 7th Level
- Section on 1st Level
- Section on 2nd Level
- Section on 3rd Level
- Section on 4th Level
- Section on 5th Level
- Section on 6th Level
- Section on 7th Level
- Section on 8th Level
- Section on 9th Level
- Section on 10th Level
- Section on 11th Level
- Section on 12th Level
- Section on 13th Level
- Section on 14th Level
- Section on 15th Level
- Section on 16th Level
- Section on 17th Level
- Section on 18th Level
- Section on 19th Level
- Section on 20th Level
- Section on 21st Level
- Section on 22nd Level
- Section on 23rd Level
- Section on 24th Level
- Section on 25th Level
- Section on 26th Level
- Section on 27th Level
- Section on 28th Level
- Section on 29th Level
- Section on 30th Level
- Section on 31st Level
- Section on 32nd Level
- Section on 33rd Level
- Section on 34th Level
- Section on 35th Level
- Section on 36th Level
- Section on 37th Level
- Section on 38th Level
- Section on 39th Level
- Section on 40th Level
- Section on 41st Level
- Section on 42nd Level
- Section on 43rd Level
- Section on 44th Level
- Section on 45th Level
- Section on 46th Level
- Section on 47th Level
- Section on 48th Level
- Section on 49th Level
- Section on 50th Level
- Section on 51st Level
- Section on 52nd Level
- Section on 53rd Level
- Section on 54th Level
- Section on 55th Level
- Section on 56th Level
- Section on 57th Level
- Section on 58th Level
- Section on 59th Level
- Section on 60th Level
- Section on 61st Level
- Section on 62nd Level
- Section on 63rd Level
- Section on 64th Level
- Section on 65th Level
- Section on 66th Level
- Section on 67th Level
- Section on 68th Level
- Section on 69th Level
- Section on 70th Level
- Section on 71st Level
- Section on 72nd Level
- Section on 73rd Level
- Section on 74th Level
- Section on 75th Level
- Section on 76th Level
- Section on 77th Level
- Section on 78th Level
- Section on 79th Level
- Section on 80th Level
- Section on 81st Level
- Section on 82nd Level
- Section on 83rd Level
- Section on 84th Level
- Section on 85th Level
- Section on 86th Level
- Section on 87th Level
- Section on 88th Level
- Section on 89th Level
- Section on 90th Level
- Section on 91st Level
- Section on 92nd Level
- Section on 93rd Level
- Section on 94th Level
- Section on 95th Level
- Section on 96th Level
- Section on 97th Level
- Section on 98th Level
- Section on 99th Level
- Section on 100th Level

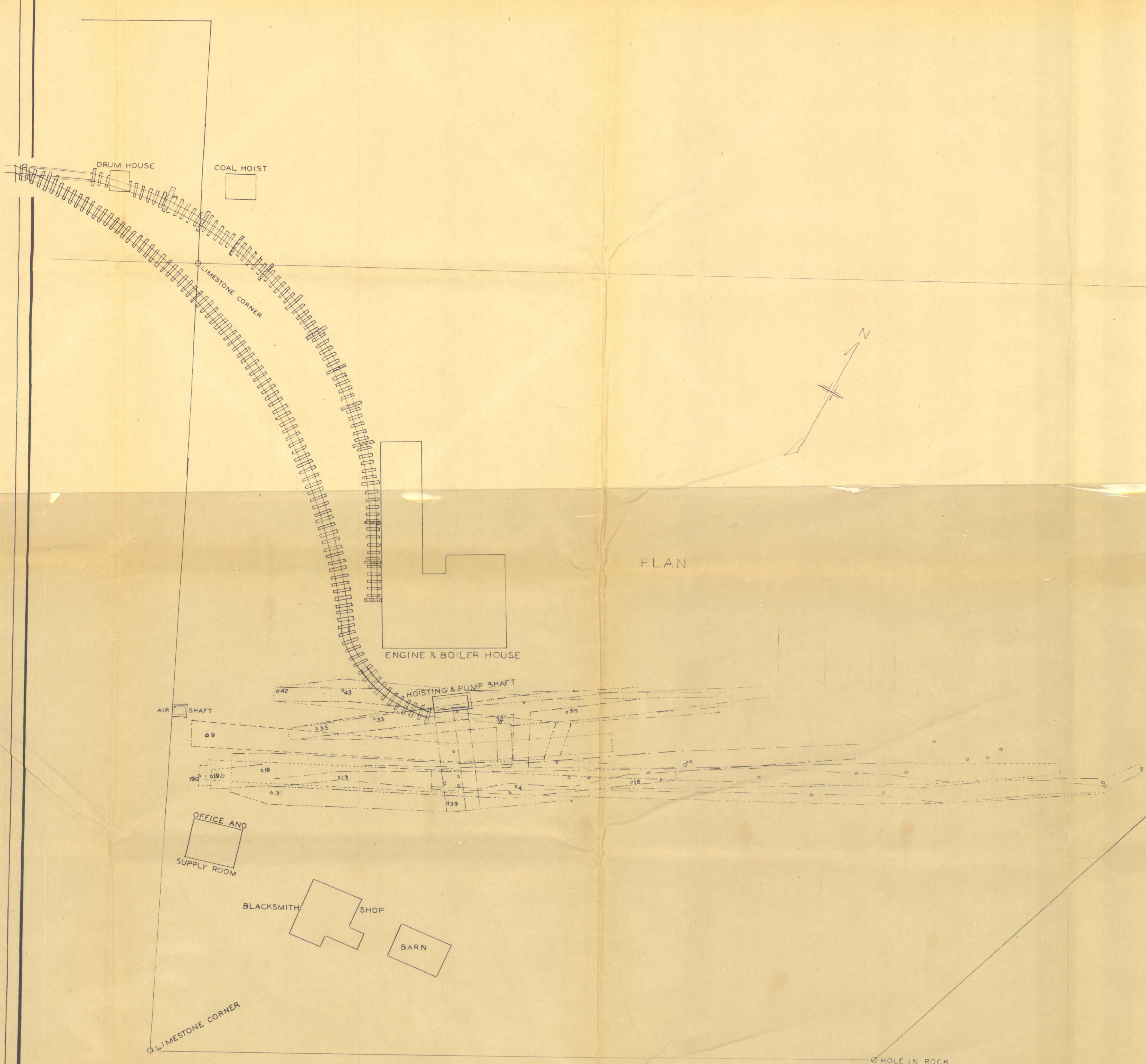
HORIZONTAL SECTION OF "OLD SCHOFIELD" VEIN ON A. B.



ELEVATION



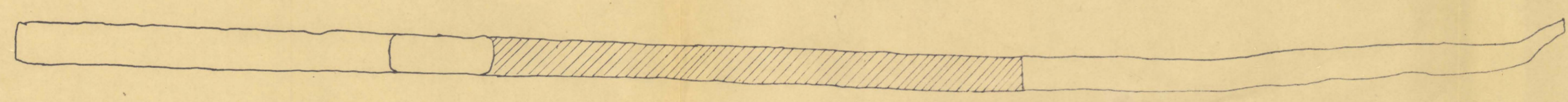
PLAN OF BOTTOM OF MINE



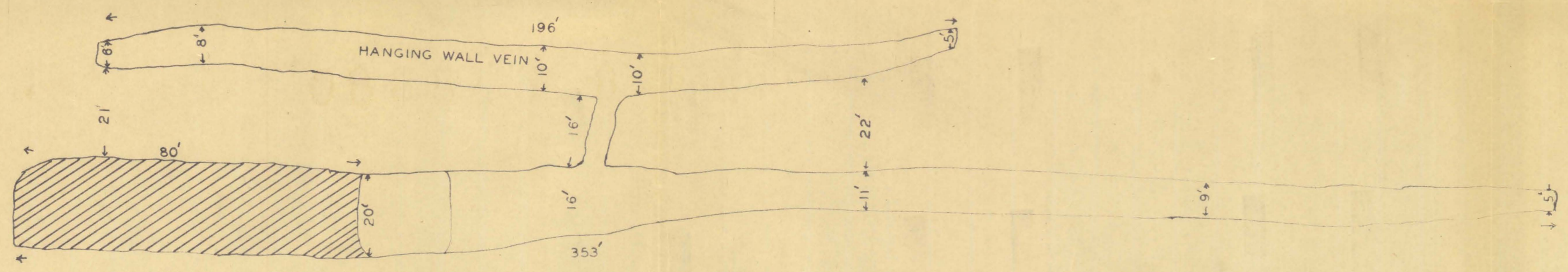
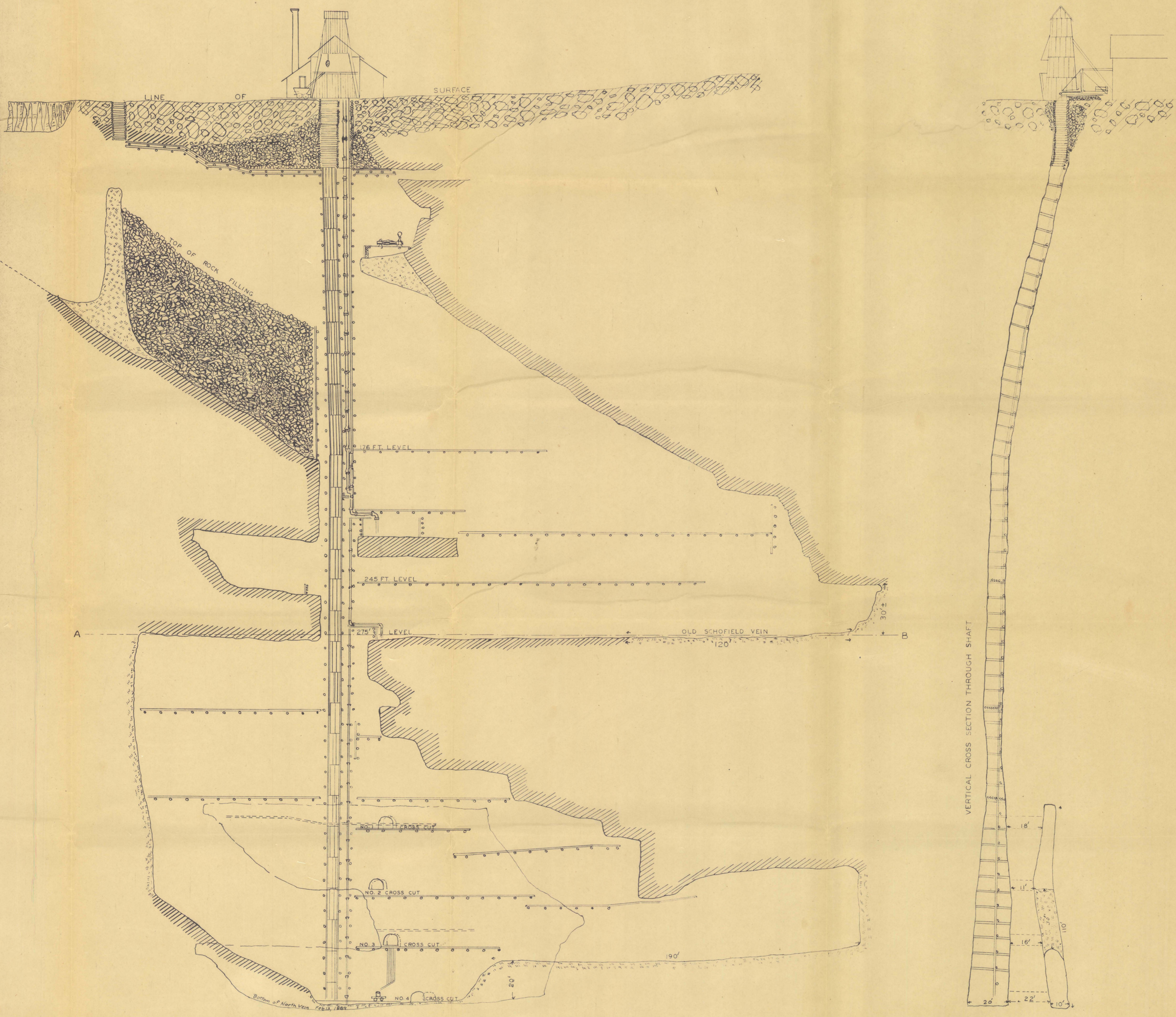
KEY

SECTION ON 176 FT. LEVEL	[Symbol]
SECTION ON 245 FT. LEVEL	[Symbol]
SECTION ON 275 FT. LEVEL	[Symbol]
SECTION ON 355 FT. LEVEL NO. 1 CROSS CUT	[Symbol]
SECTION ON 408 FT. LEVEL NO. 2 CROSS CUT	[Symbol]
SECTION ON 408 FT. LEVEL NO. 3 CROSS CUT	[Symbol]
SECTION ON 408 FT. LEVEL NO. 4 CROSS CUT	[Symbol]
SECTION ON BOTTOM LEVEL FT. FROM SURFACE	[Symbol]
EARTH	[Symbol]
ORE REMAINING IN PILLARS & BOTTOM	[Symbol]
VEIN ROCK	[Symbol]

HORIZONTAL SECTION OF 'OLD SCHOFIELD' VEIN ON A. B.

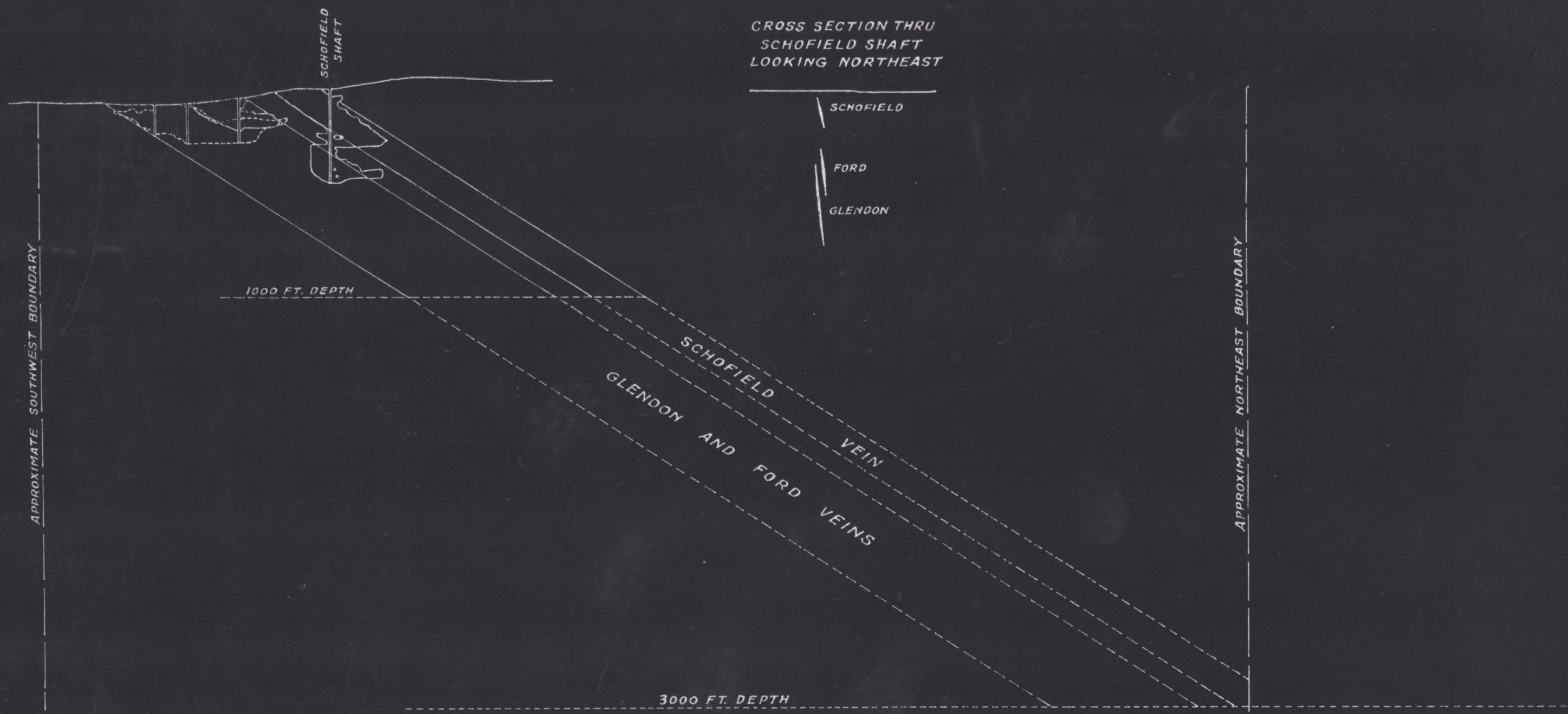


ELEVATION

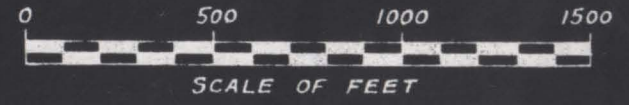


PLAN OF BOTTOM OF MINE

FIGURE 2
U.S. DEPARTMENT OF THE INTERIOR
BUREAU OF MINES
SECOND EASTERN DISTRICT
PLAN MAP OF FORD-SCHOFIELD MINE, JEFFERSON
TOWNSHIP, MORRIS COUNTY, N. J., SHOWING ELEVATION
& VERTICAL CROSS SECTION OF SHAFT
SCALE 1" = 20 FT.



**SCHOFIELD MINE
LONGITUDINAL PROJECTION
GLENDON, FORD AND SCHOFIELD VEINS**



REPORT OF W. SPENCER HUTCHINSON
MINING ENGINEER

BOSTON, MASS.
JANUARY 30, 1923.

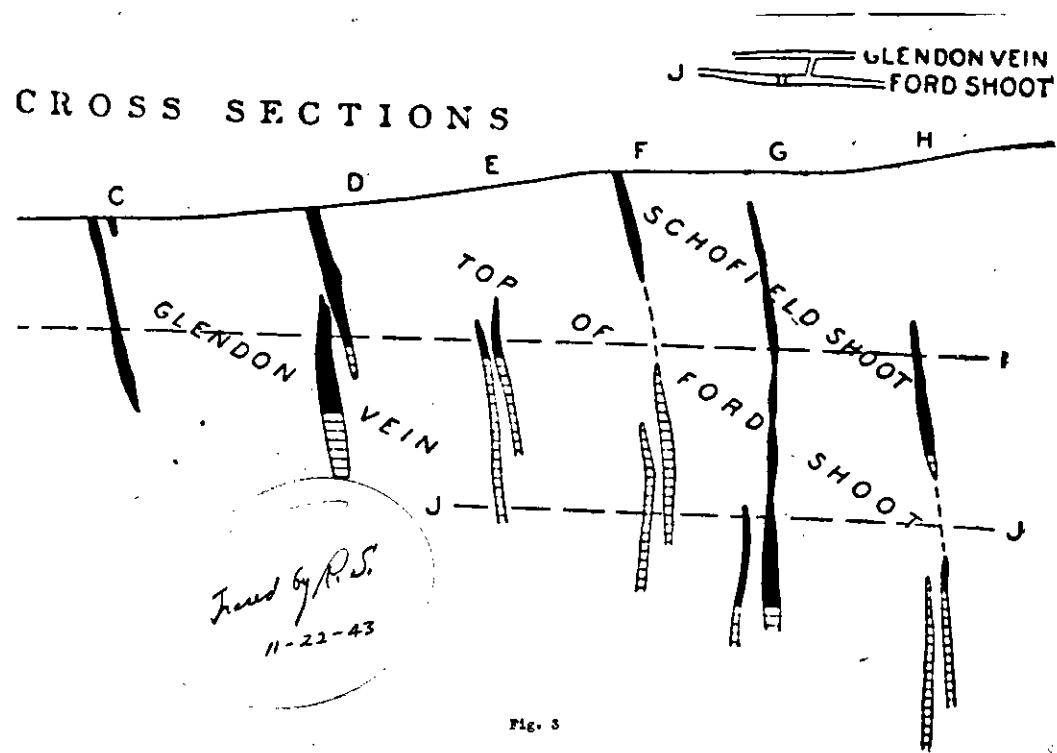


Fig. 3

30002 | 412 | 14.5.1 | 300841

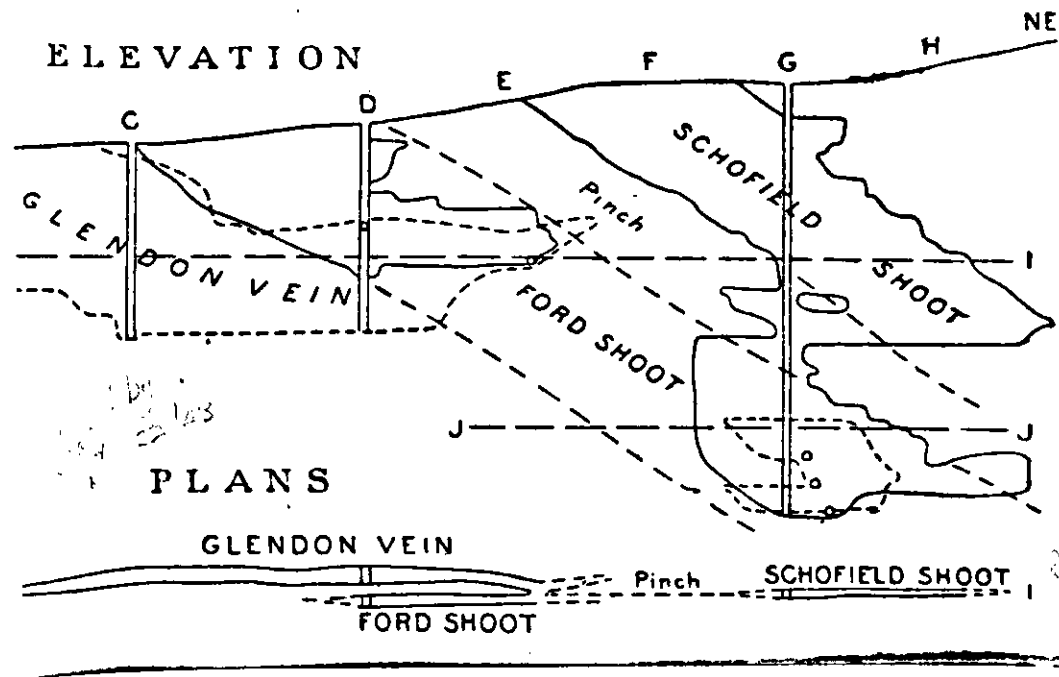


Fig. 2 - FORD-SCHOFIELD MINE

300020411

14.5.1 300840