



State of New Jersey
Department of Environmental Protection
Geological Survey



Information Disclaimer

The State of New Jersey makes great effort to provide secure, accurate and complete information. However, portions of the information contained here may be incorrect or not current.

The State of New Jersey, its officers, employees or agents shall not be liable for damages or losses of any kind arising out of or in connection with the use or performance of information, including but not limited to, damages or losses caused by reliance upon the accuracy or timeliness of any such information, or damages incurred from the viewing, distributing, or copying of those materials.

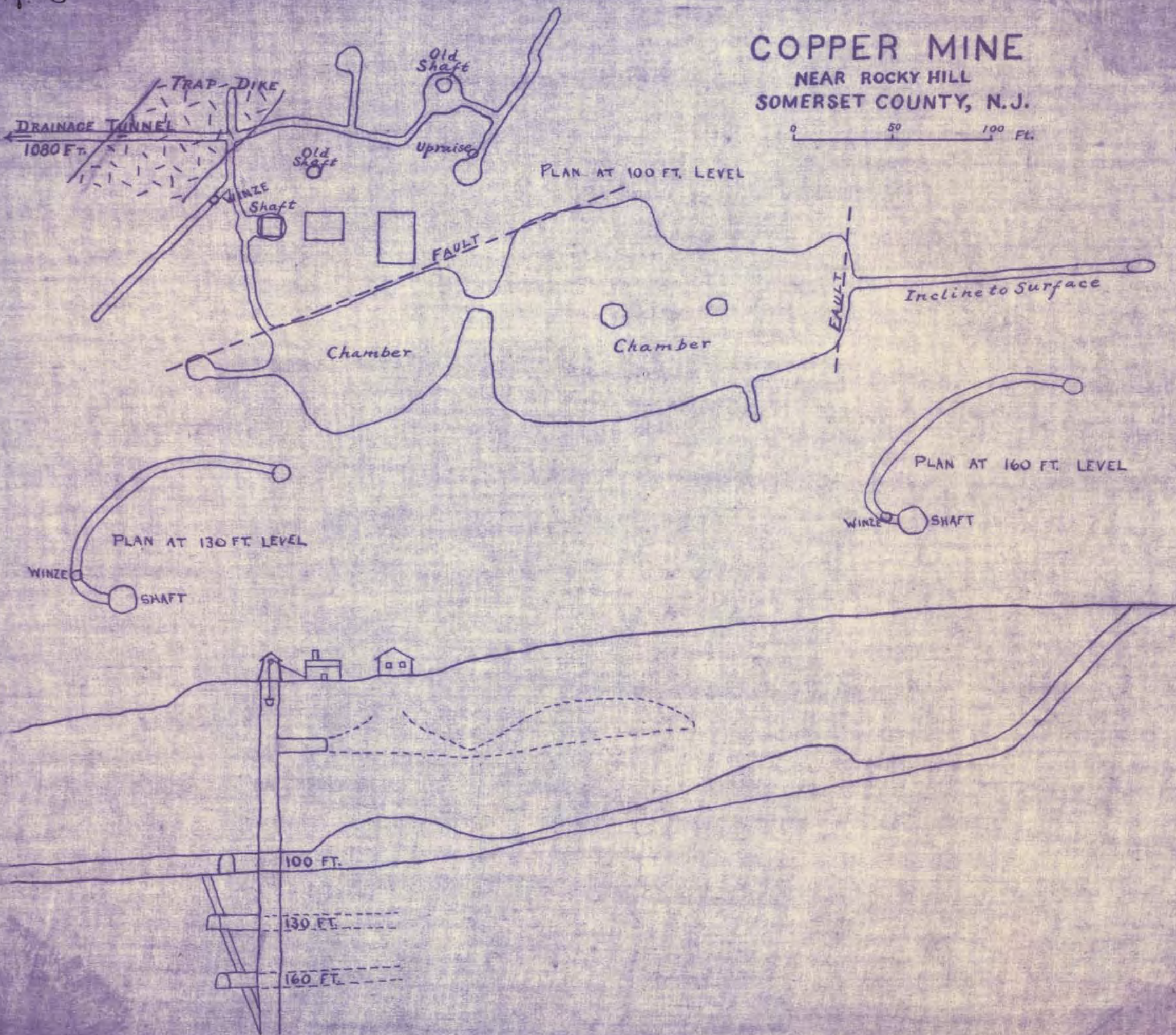
The materials and information provided here are provided "as is." No warranty of any kind, implied, expressed, or statutory, including but not limited to the warranties of non-infringement of third party rights, title, merchantability, fitness for a particular purpose, and freedom from computer virus, is given with respect to the contents of this document.

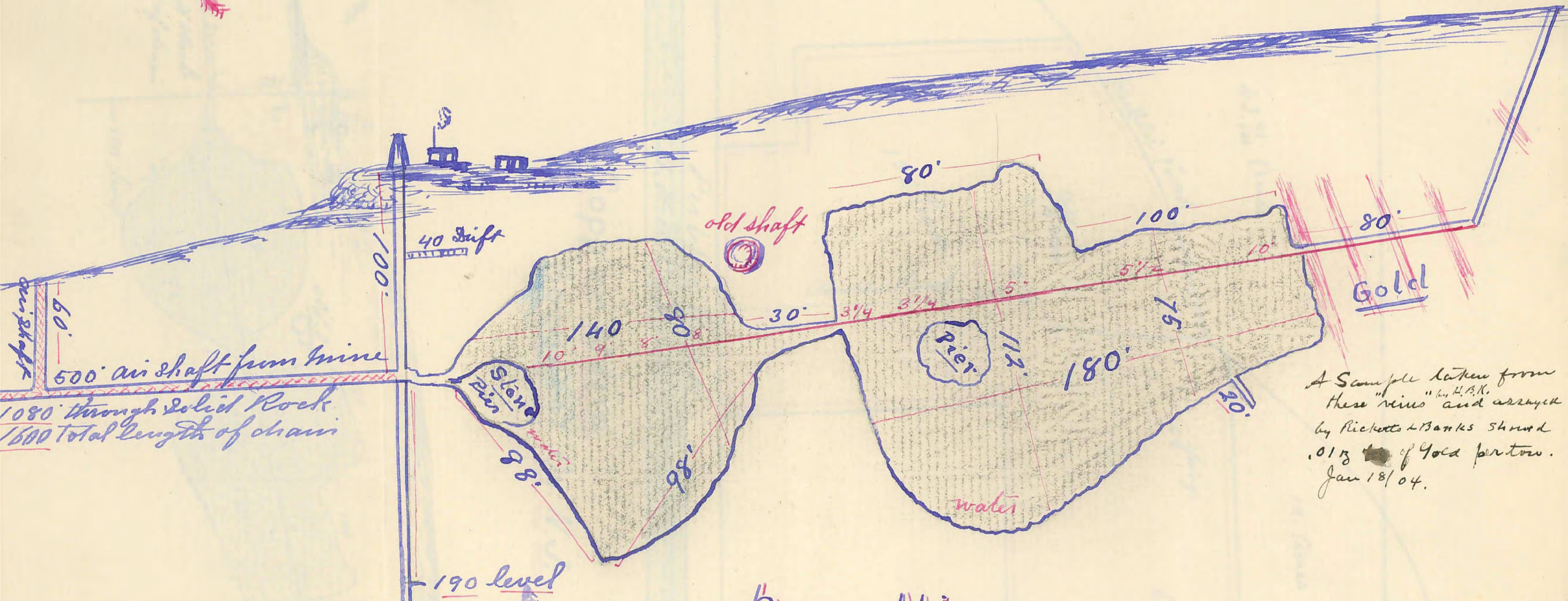
Fig. 5

COPPER MINE

NEAR ROCKY HILL
SOMERSET COUNTY, N.J.

0 50 100 FT.

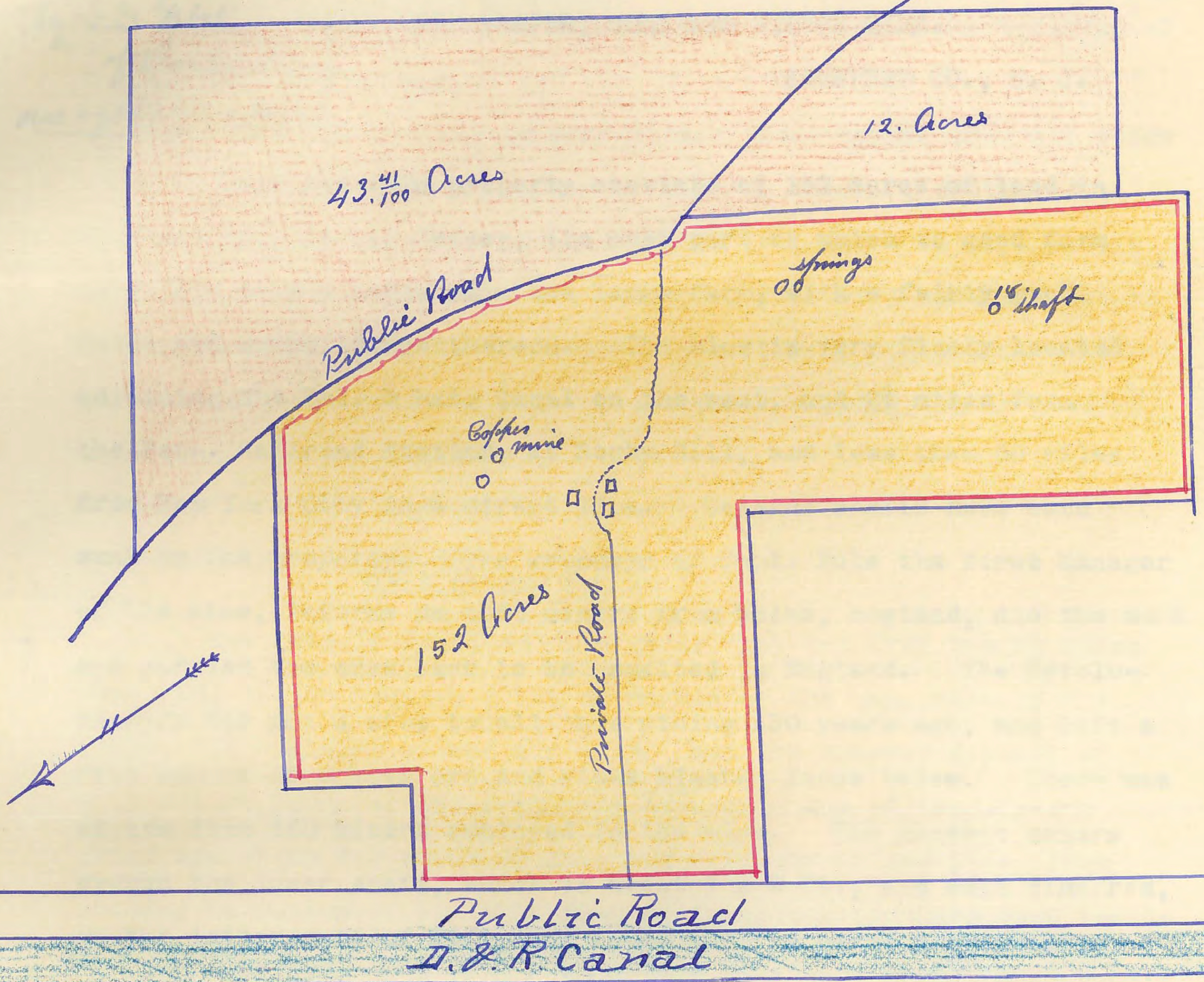




A Sample taken from these "veins" and assayed by Ricketts & Banks showed .013 of Gold per ton. Jan 18/04.

Copper Mine
Somerset Co. N.J.

Coppy
45 degree End low 1 1/2 miles



Copper Mine
Somerst Co. N.J.

