



State of New Jersey  
Department of Environmental Protection  
Geological Survey



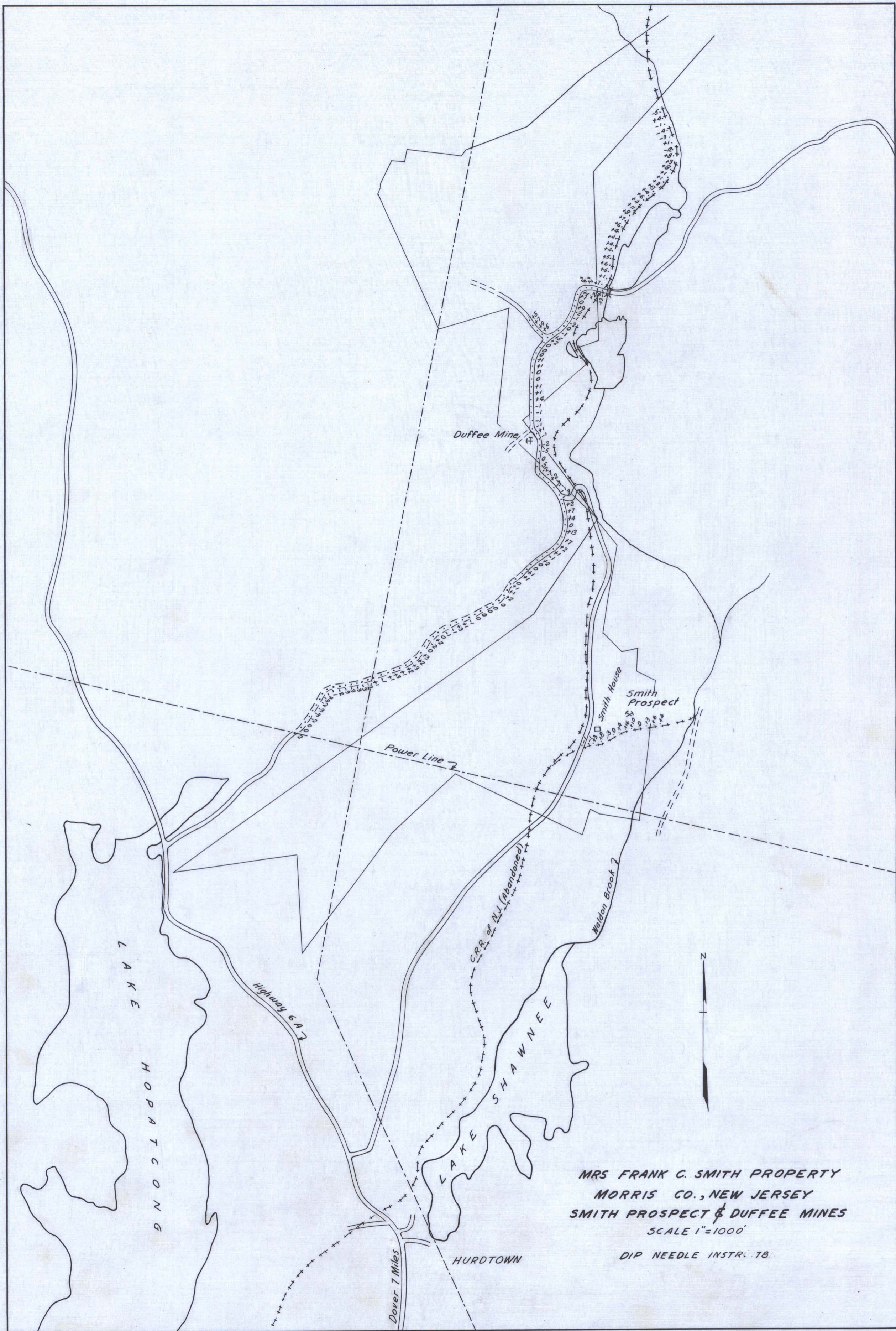
**Information Disclaimer**

The State of New Jersey makes great effort to provide secure, accurate and complete information. However, portions of the information contained here may be incorrect or not current.

The State of New Jersey, its officers, employees or agents shall not be liable for damages or losses of any kind arising out of or in connection with the use or performance of information, including but not limited to, damages or losses caused by reliance upon the accuracy or timeliness of any such information, or damages incurred from the viewing, distributing, or copying of those materials.

The materials and information provided here are provided "as is." No warranty of any kind, implied, expressed, or statutory, including but not limited to the warranties of non-infringement of third party rights, title, merchantability, fitness for a particular purpose, and freedom from computer virus, is given with respect to the contents of this document.





MRS FRANK C. SMITH PROPERTY  
MORRIS CO., NEW JERSEY  
SMITH PROSPECT & DUFFEE MINES  
SCALE 1"=1000'  
DIP NEEDLE INSTR. 78



U.S. MAP E 316

77.96 ACRES RET. TO E. BOND  
NOV 6 - 1806  
Book S. 15 P 16 F

53.06 ACRES  
RET. TO E. BOND  
180 F RECORDED  
IN B - P -

42.08 ACRES  
RET. TO  
E. BOND  
TUNE 30, 1880  
Book S 19 P 39

12.98 ACRES  
DONOR A LIZIB WIFE  
TO DENNIS DURRIS  
DATED FEB 22, 1849  
IN MORRIS CT. RECORD OF  
DEEDS Book P 4

N

330' 660' 990'  
Scale  
in Feet

171.46 ACRES RETURNED TO THE DEVISEES OF  
MARY BISHFIELD + LEWEL LADD, MAR 13, 1876  
BOOK S 12 P 107

53.9 ACRES  
RETURNED TO ISRAEL CAMPBELL  
Book S 15 P 129

1111 06' 15" S 71' E

2111 77' E 28' 40"

50 ACRES RETURNED TO  
SILAS CUMMIST

1111 35' E 71' 40"

1111 11' 15" S 10' 15" E  
1111 11' 15" S 10' 15" E  
1111 11' 15" S 10' 15" E

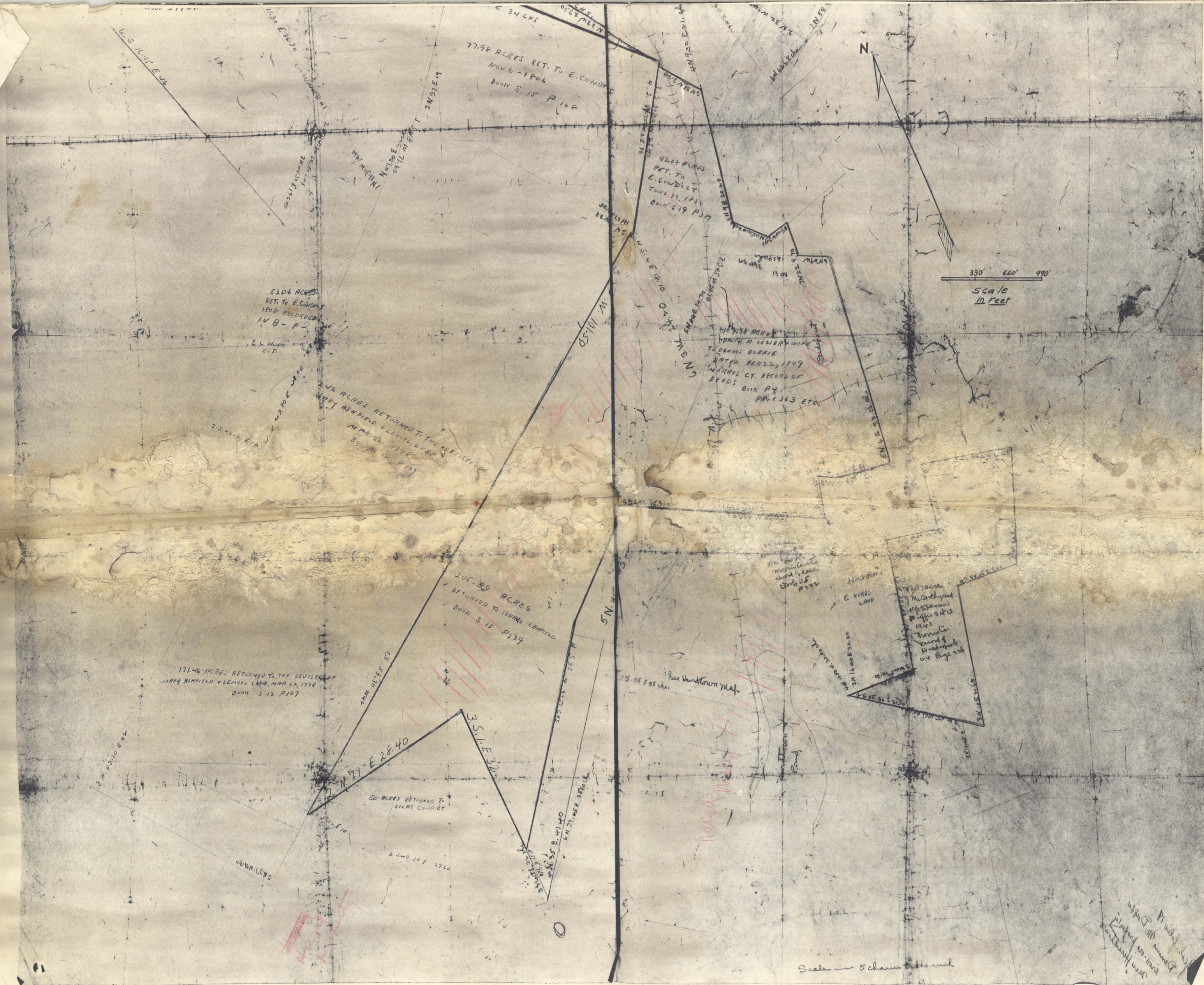
5 N 1/4

1111 35' E 71' 40"

1111 35' E 71' 40"

Scale 5 chains





Lower half

330' 660' 990'  
Scale  
10 Feet

Scale - 5 chains to an inch

Book 11 P 11  
Book 11 P 11  
Book 11 P 11



Upper half

Lands near Weldon,  
Morris County  
controlled by Sue Smith  
and relatives

Estate Dennis  
Morris Duffie

74.01 acres  
Stones S. Readley &  
Wife to Dennis Duffie  
Mar. 10, 1848  
Book N 47 Ches  
P 346

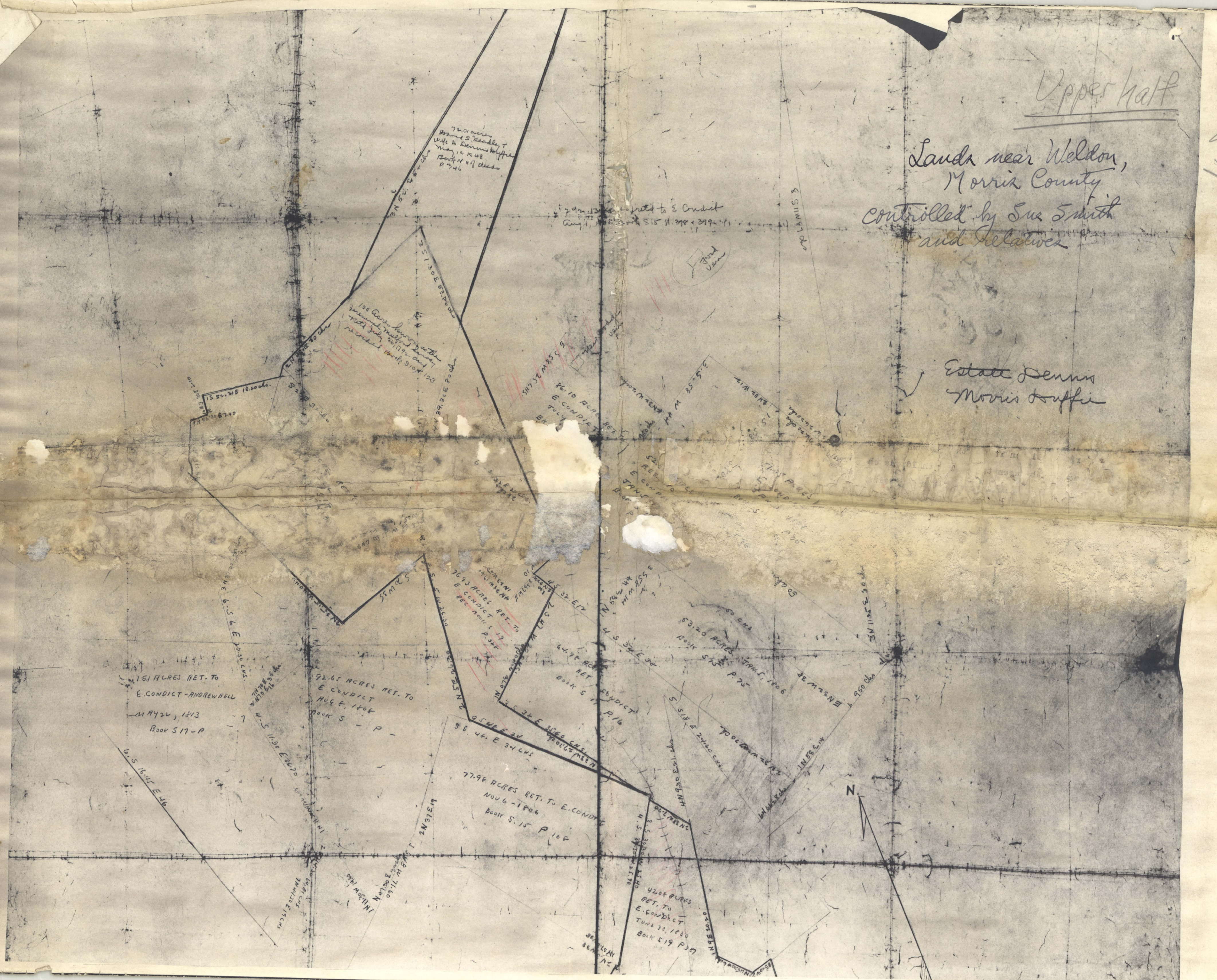
100 Acres  
Surveyed by the  
General Land Office  
July 20, 1792 and  
re-recorded Book 510 P 123

151 ACRES RET. TO  
E. CONDUCT-ANDREW BELL  
MAY 22, 1813  
Book S 17-P

92.65 ACRES RET. TO  
E. CONDUCT  
AUG 8, 1808  
Book S - P

77.98 ACRES RET. TO E. CONDUCT  
NOV 6-1806  
Book S. 15 P 168

42.08 ACRES  
RET. TO  
E. CONDUCT  
JUNE 30, 1830  
Book S 19 P 39





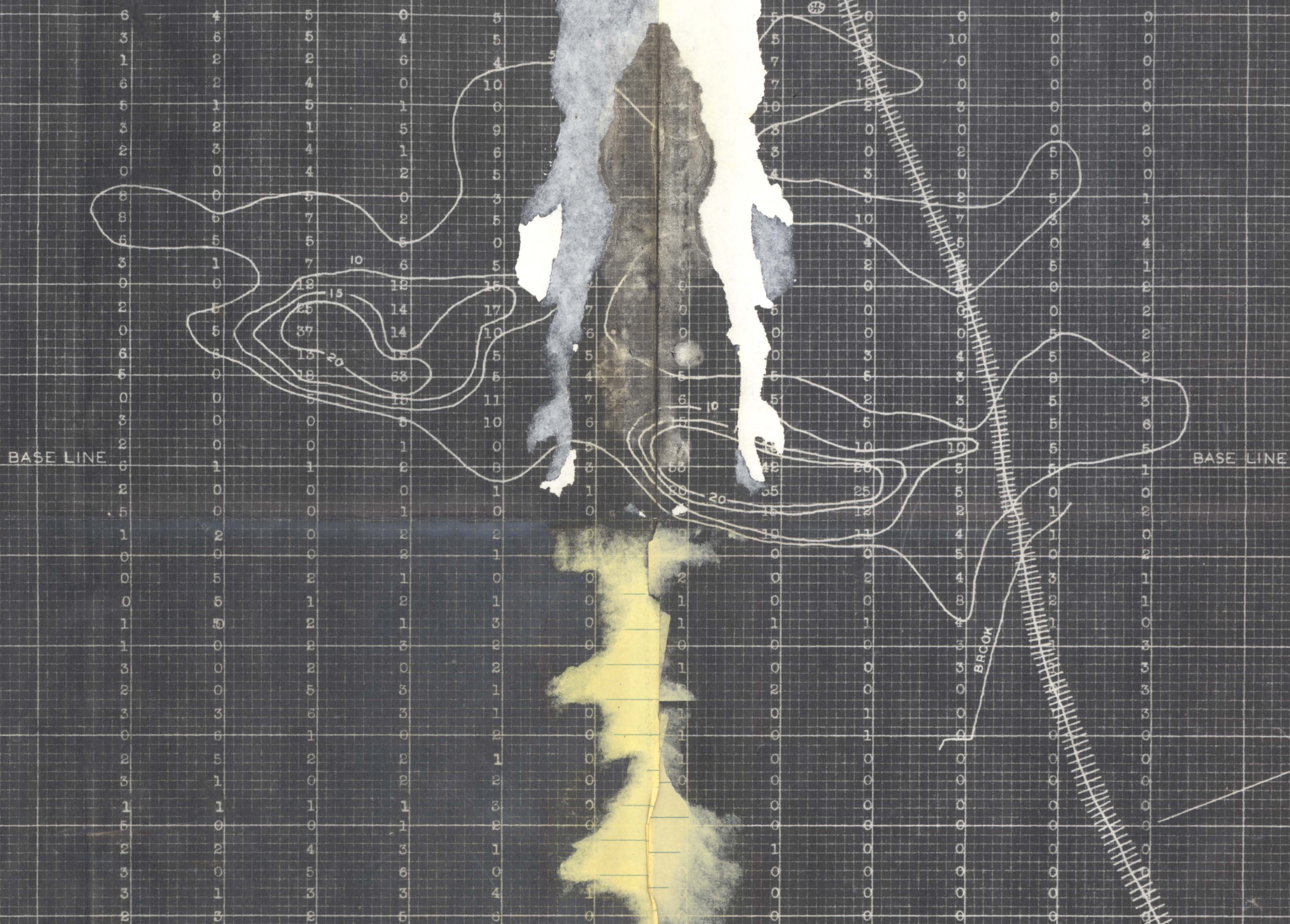


FIGURE 3  
 DIP NEEDLE SURVEY  
 SUE SMITH PROPERTY  
 NEW JERSEY  
 SCALE 1 INCH = 100'

By W.S. Burr of M. ...  
 1943