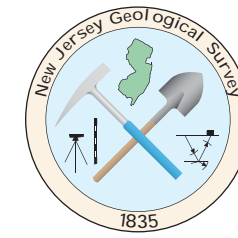


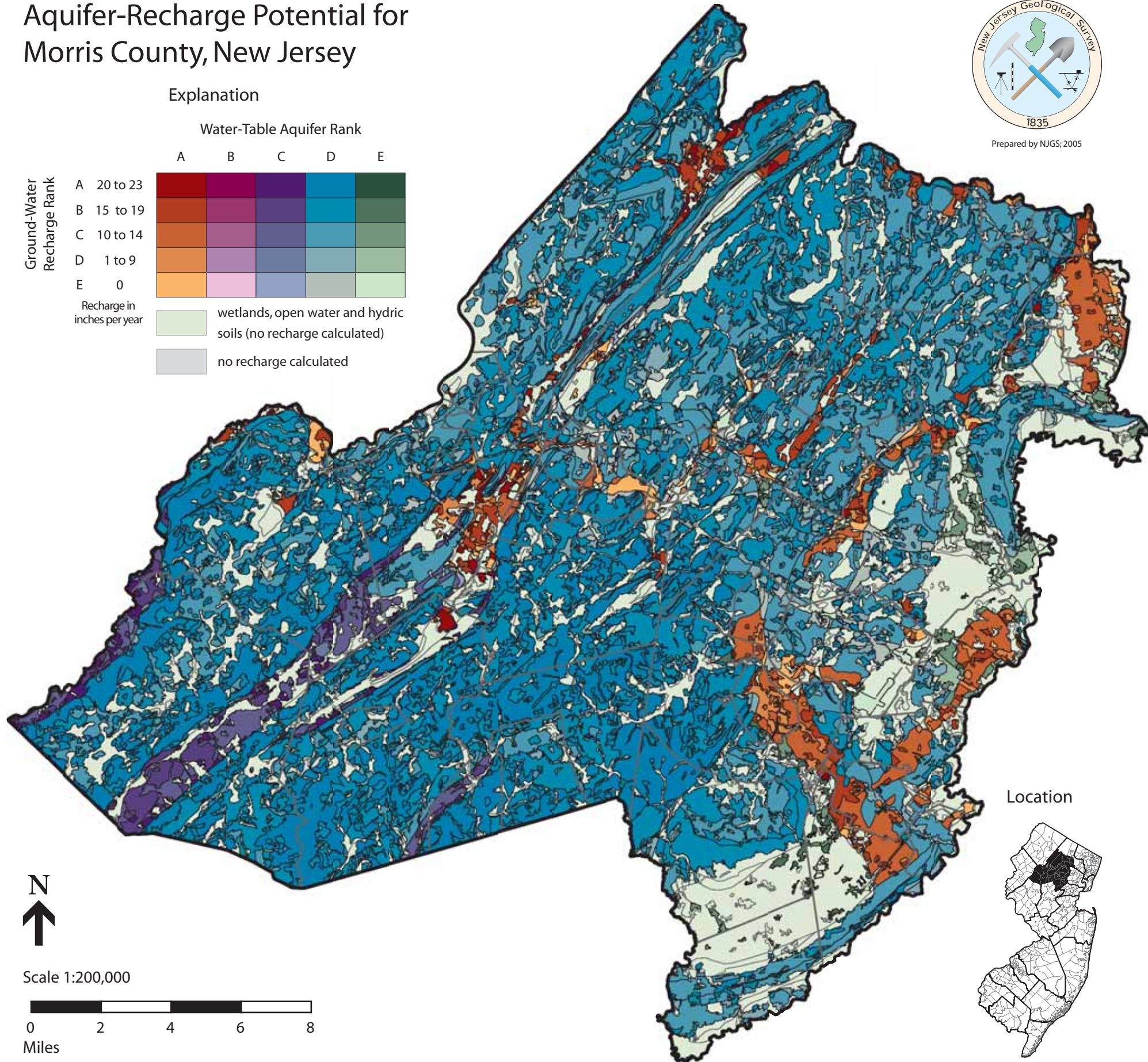
Aquifer-Recharge Potential for Morris County, New Jersey



Prepared by NJGS; 2005

Explanation

		Water-Table Aquifer Rank				
		A	B	C	D	E
Ground-Water Recharge Rank	A	20 to 23	[Dark Red]	[Purple]	[Dark Blue]	[Dark Green]
	B	15 to 19	[Red-Orange]	[Purple-Blue]	[Blue]	[Green]
	C	10 to 14	[Orange]	[Purple-Blue]	[Blue]	[Green]
	D	1 to 9	[Light Orange]	[Purple-Blue]	[Blue]	[Green]
	E	0	[Light Orange]	[Purple-Blue]	[Blue]	[Green]
Recharge in inches per year		<div style="display: flex; justify-content: space-around;"> <div style="text-align: center;"> ■ wetlands, open water and hydric soils (no recharge calculated) </div> <div style="text-align: center;"> ■ no recharge calculated </div> </div>				



Scale 1:200,000



Location

