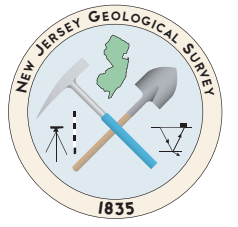


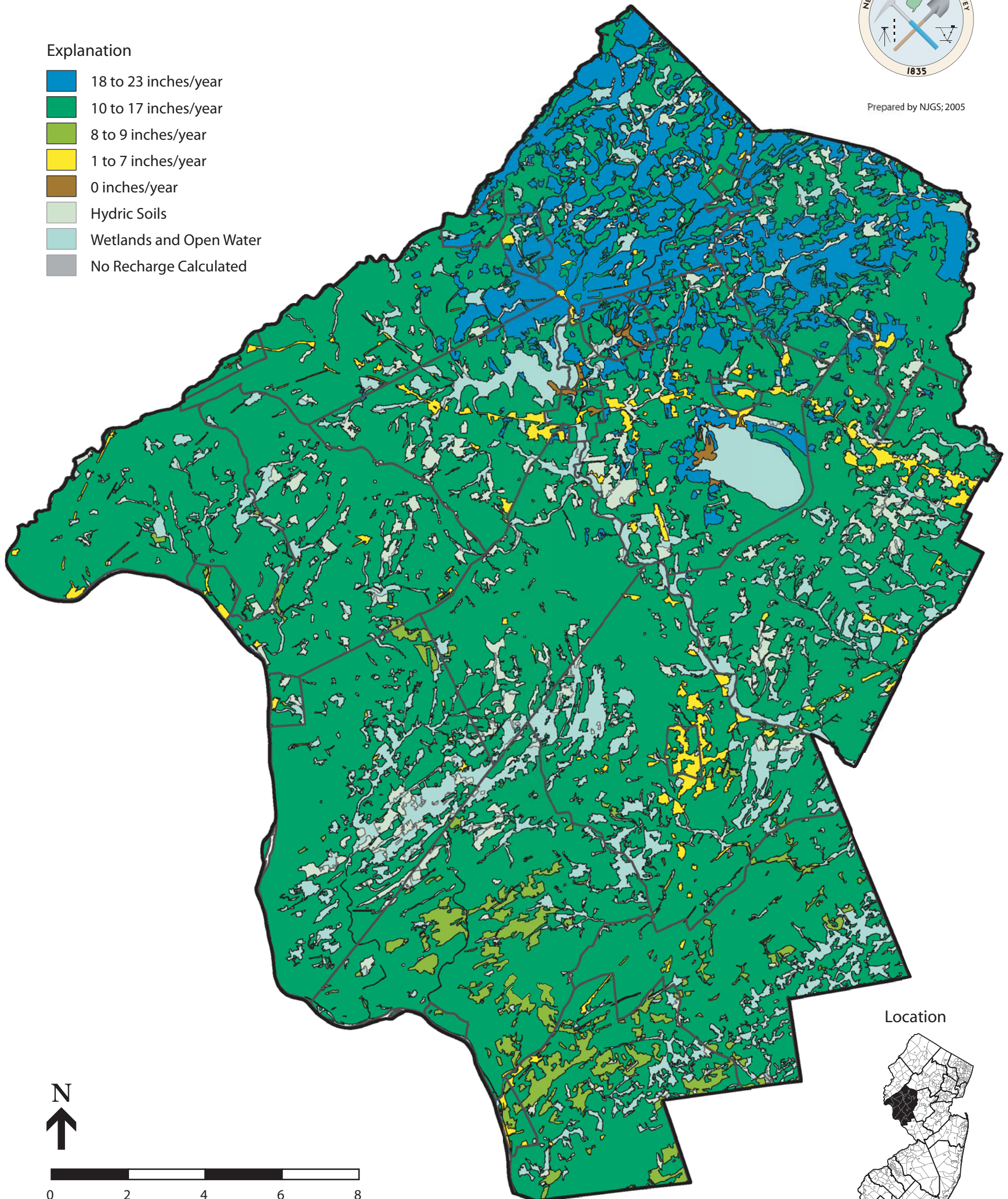
Ground-Water Recharge for Hunterdon County, New Jersey



Prepared by NJGS; 2005

Explanation

- 18 to 23 inches/year
- 10 to 17 inches/year
- 8 to 9 inches/year
- 1 to 7 inches/year
- 0 inches/year
- Hydric Soils
- Wetlands and Open Water
- No Recharge Calculated



Miles
Scale 1:170,000

Location

