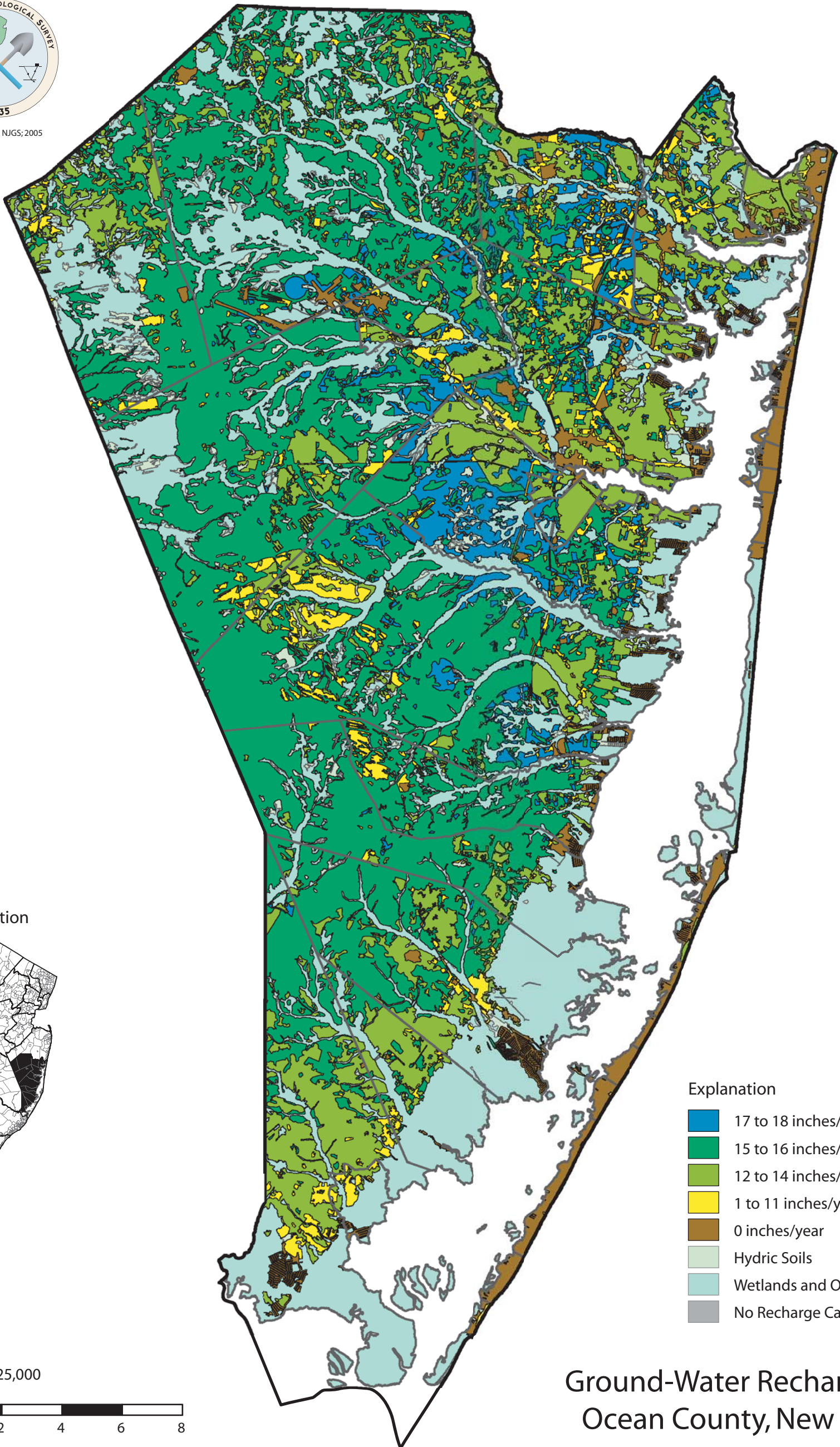
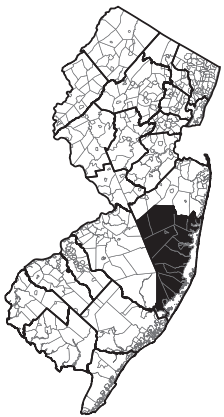


Prepared by NJGS, 2005









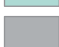

Location



Miles
Scale 1:225,000



Explanation

-  17 to 18 inches/year
-  15 to 16 inches/year
-  12 to 14 inches/year
-  1 to 11 inches/year
-  0 inches/year
-  Hydric Soils
-  Wetlands and Open Water
-  No Recharge Calculated

Ground-Water Recharge for Ocean County, New Jersey