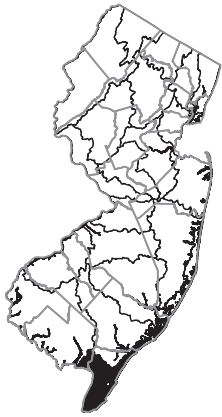
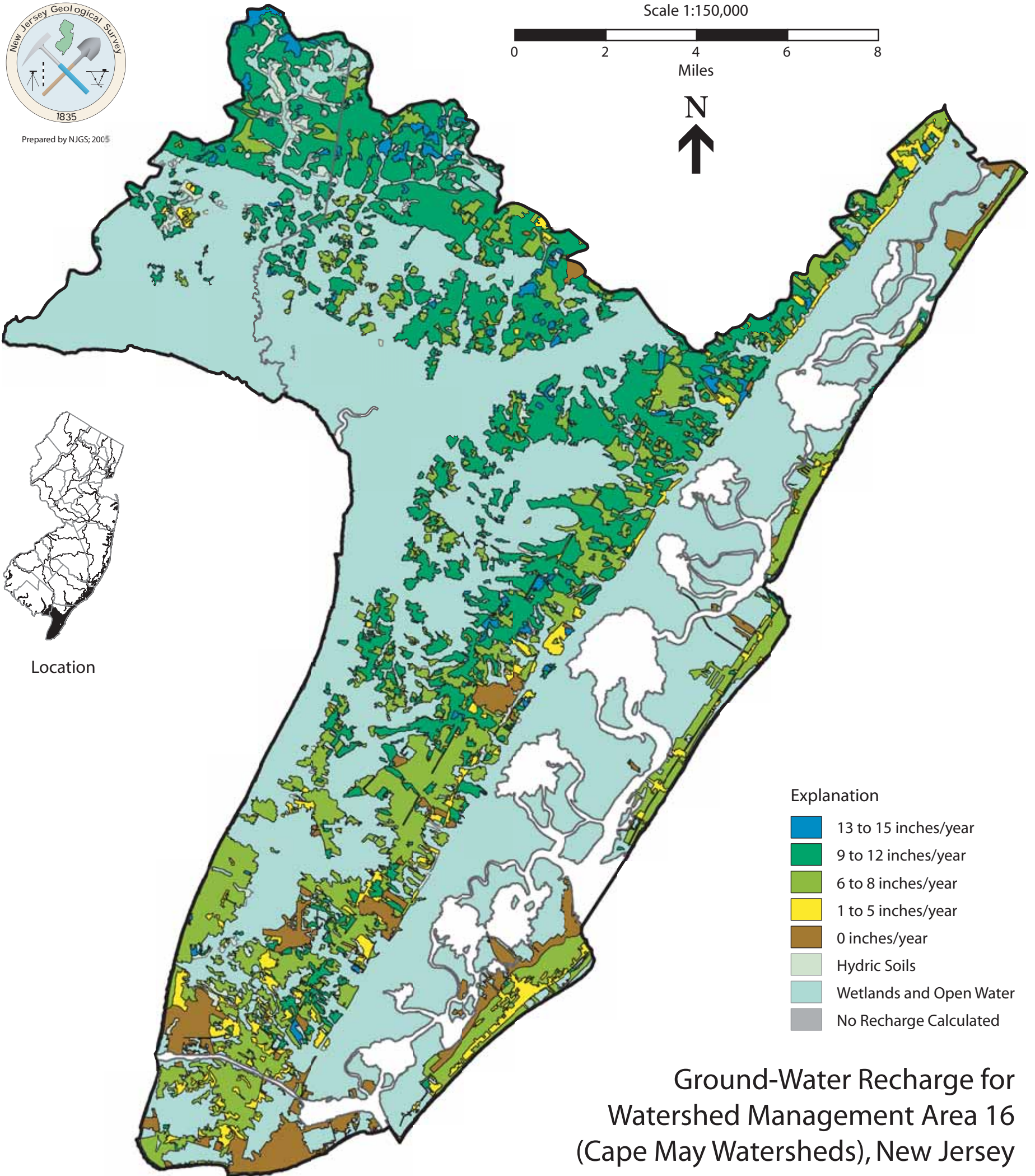


Prepared by NJGS, 2005

Scale 1:150,000








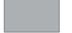


Miles



Location

Explanation

-  13 to 15 inches/year
-  9 to 12 inches/year
-  6 to 8 inches/year
-  1 to 5 inches/year
-  0 inches/year
-  Hydric Soils
-  Wetlands and Open Water
-  No Recharge Calculated

Ground-Water Recharge for Watershed Management Area 16 (Cape May Watersheds), New Jersey