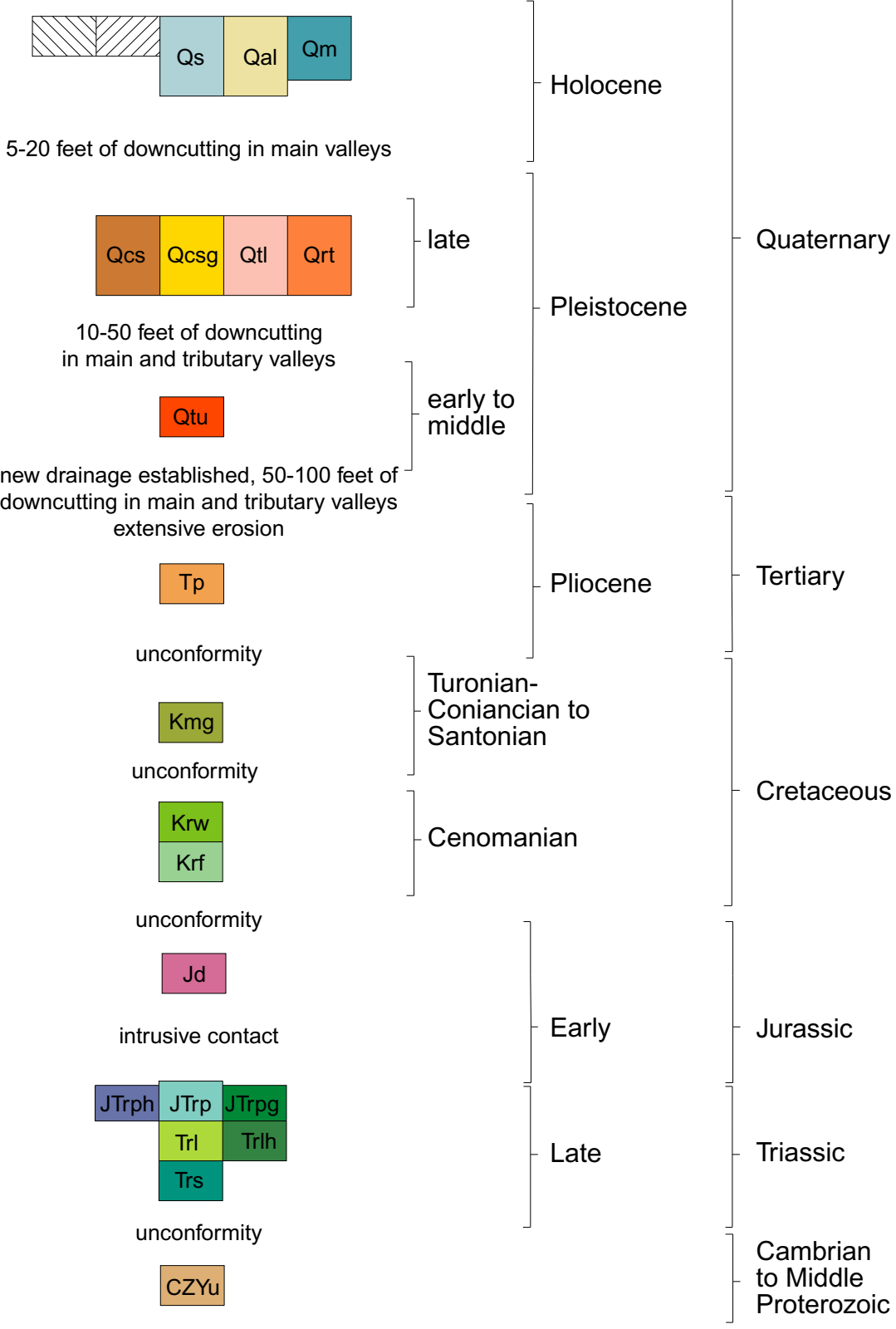


GEOLOGIC MAP

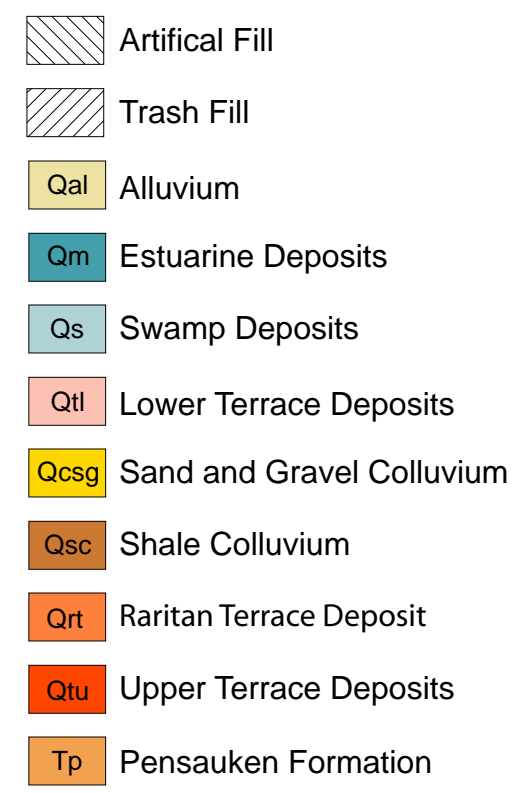
CORRELATION OF MAP UNITS



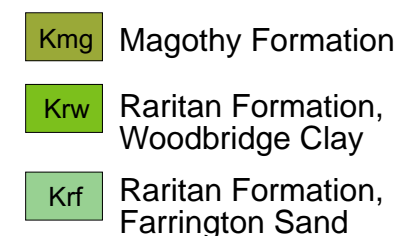
MAP UNITS

(for description, see Sheet 3)

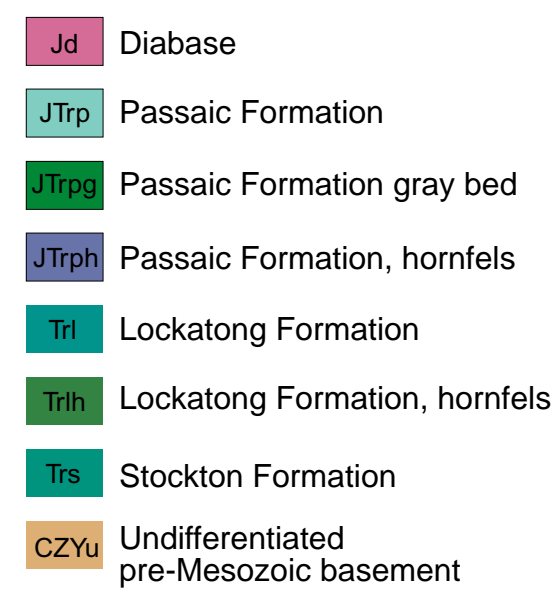
SURFICIAL DEPOSITS



COASTAL PLAIN FORMATIONS

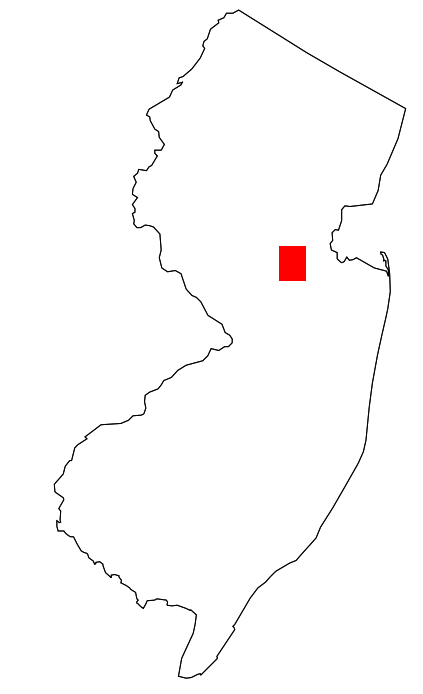
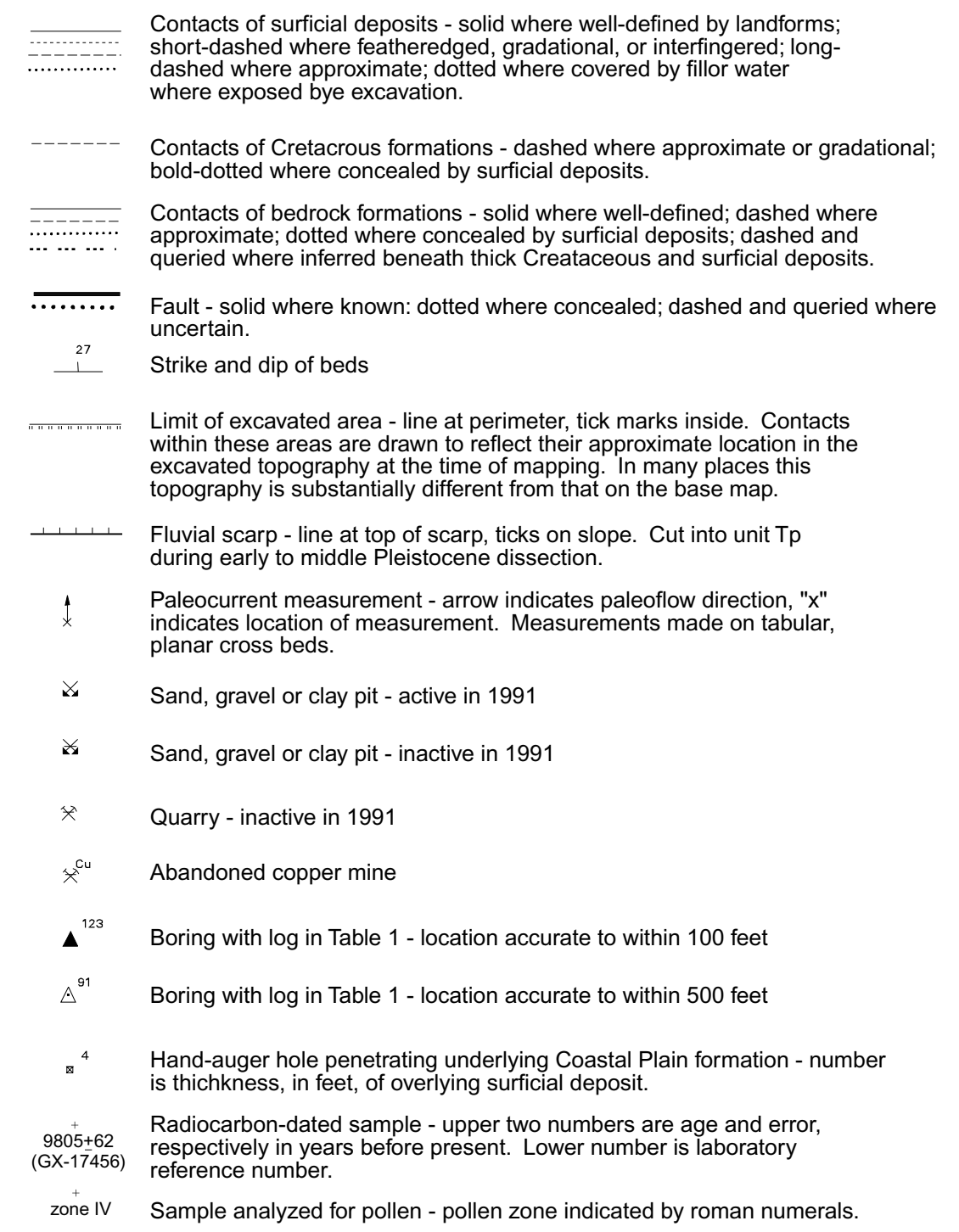


BEDROCK FORMATIONS



EXPLANATION

GEOLOGIC MAP SYMBOLS

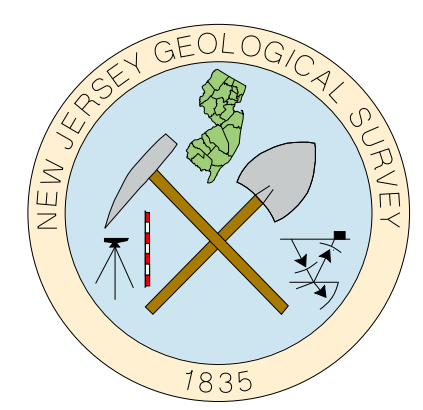
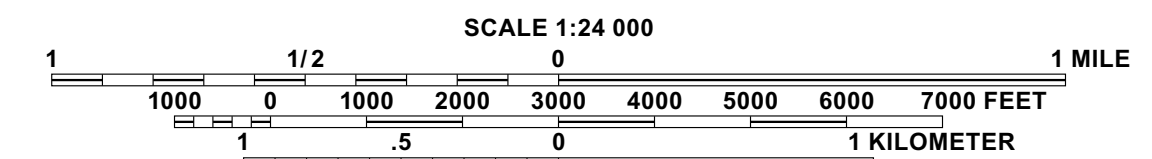


LOCATION MAP

Base from U.S. Geological Survey, 1954  
Photorevised 1970

GIS application and digital cartography by:  
Donald H. Monteverde, Maryann Scott  
and Ronald Pristas

Surficial geology by S.D. Stanford, 1991  
Cretaceous geology by S.D. Stanford and P.J. Sugarman, 1991  
Cretaceous paleontology by G.J. Brenner, 1992-94  
Bedrock geology by D.H. Monteverde and R.A. Volkert, 1993-95  
The interpretations presented here are provisional pending peer review.  
There may be revisions prior to publication.



GEOLOGY OF THE NEW BRUNSWICK QUADRANGLE,  
MIDDLESEX AND SOMERSET COUNTIES, NEW JERSEY

By:

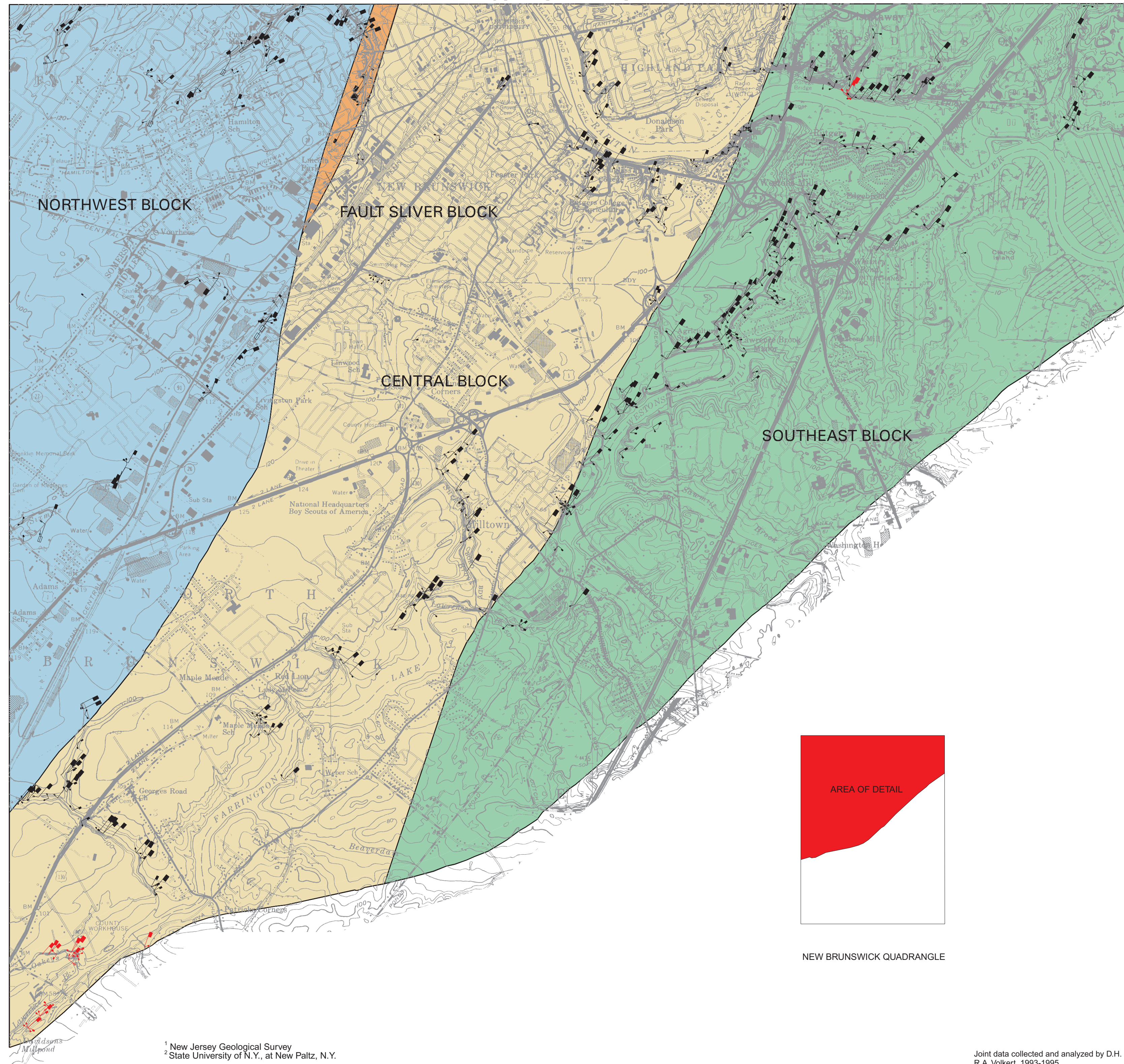
Scott D. Stanford<sup>1</sup>, Donald H. Monteverde<sup>1</sup>,  
Richard A. Volkert<sup>1</sup>, Peter J. Sugarman<sup>1</sup>  
And Gilbert J. Brenner<sup>2</sup>

1998

(for cross sections, see Sheet 2)



JOINT ORIENTATION MAP

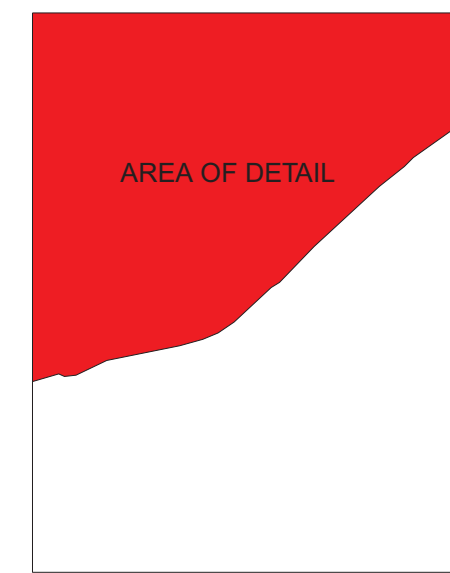


JOINT ORIENTATION MAP UNITS

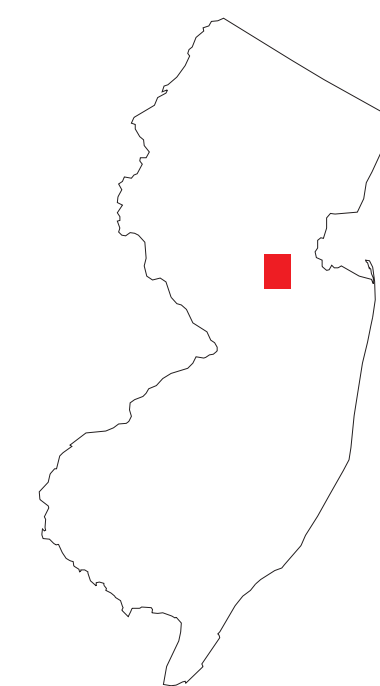
- Northwest block
- Fault sliver block
- Central block
- Southeast block

JOINT ORIENTATION MAP SYMBOLS

- Joints in sedimentary rock
  - dipping between 0-29 degrees
  - dipping between 30-59 degrees
  - dipping between 60-89 degrees
  - dipping 90 degrees
- Joints in diabase
  - dipping between 0-29 degrees
  - dipping between 30-59 degrees
  - dipping between 60-89 degrees
  - dipping 90 degrees



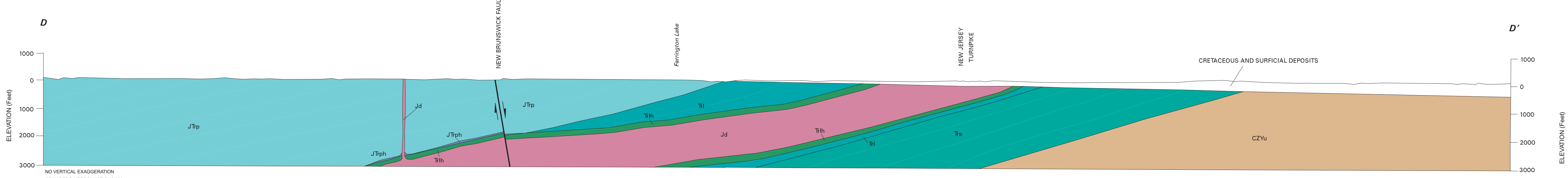
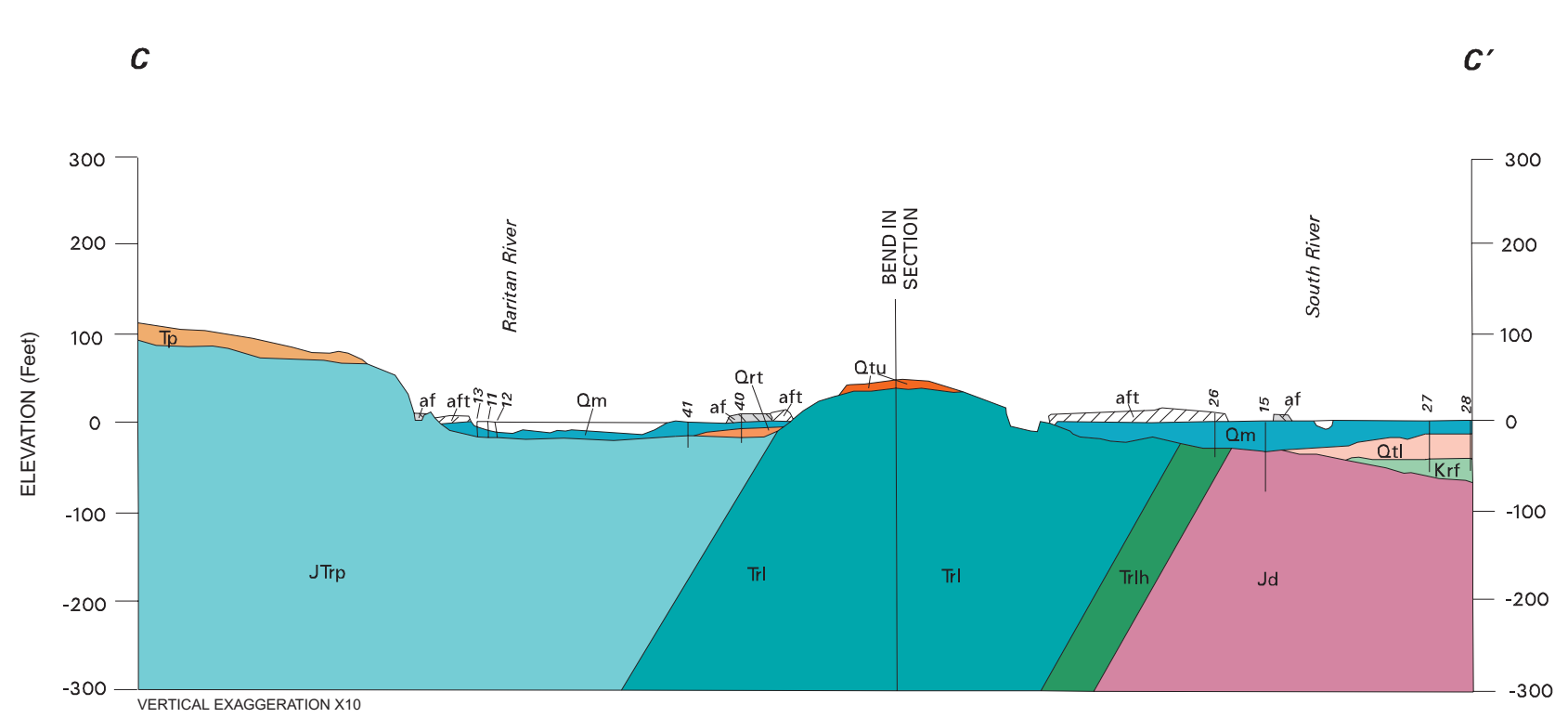
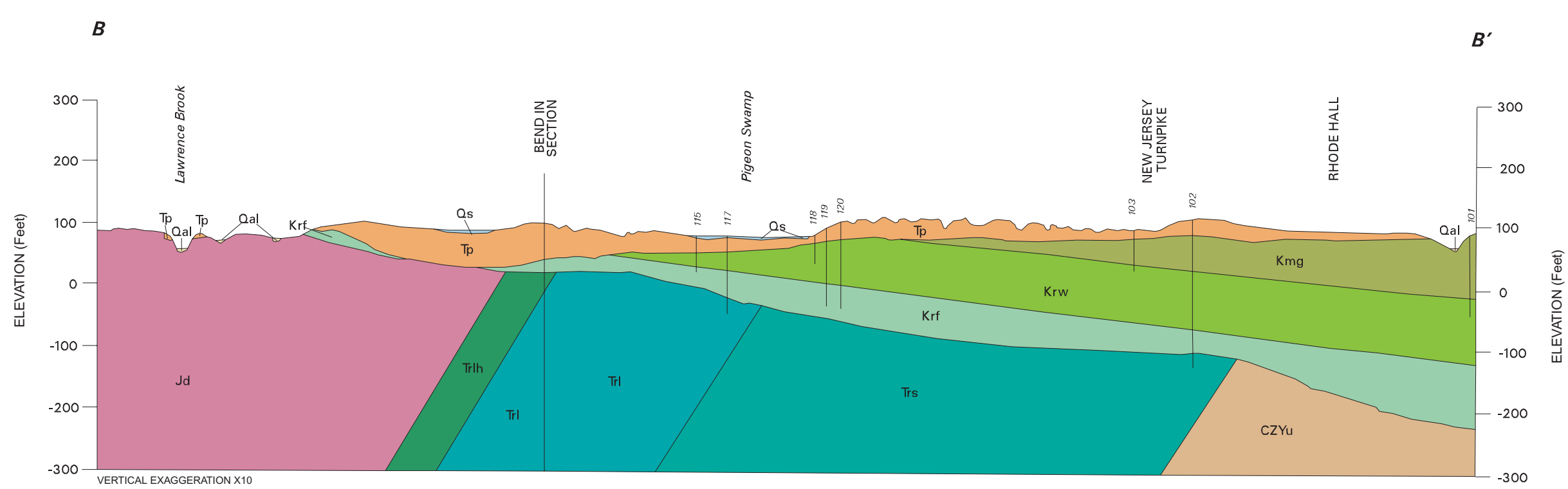
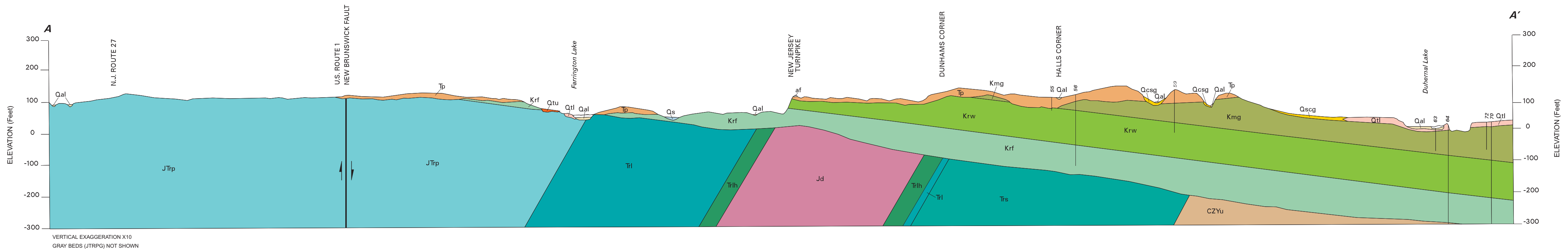
NEW BRUNSWICK QUADRANGLE



LOCATION MAP

<sup>1</sup> New Jersey Geological Survey  
<sup>2</sup> State University of N.Y., at New Paltz, N.Y.

Joint data collected and analyzed by D.H. Monteverde and R.A. Volkert, 1993-1995.



GEOLOGY OF THE NEW BRUNSWICK QUADRANGLE,  
MIDDLESEX AND SOMERSET COUNTIES, NEW JERSEY

By:  
Scott D. Stanford<sup>1</sup>, Donald H. Monteverde<sup>1</sup>,  
Richard A. Volkert<sup>1</sup>, Peter J. Sugarman<sup>1</sup>  
And Gilbert J. Brenner<sup>2</sup>

1998

(for description of cross sections units, see Sheet 3)  
(for location of cross sections, see Sheet 1)  
(for discussion of joint data, see Sheet 3)

