



New Jersey
NATURAL LANDS TRUST

AGENDA

NATURAL LANDS TRUST MEETING

March 4, 2016

Location: Office of Natural Lands Management

501 E. State Street, 5 Station Plaza

4th Floor Large Conference Room

Trenton, NJ

12:00 PM

I. Statement of Open Public Meetings Act

II. General Public Comment

III. Financial Report

-Third and Fourth Quarter 2015 Financial Reports, for decision

IV. Minutes of October 16, 2015 meeting, for decision

V. Unfinished Business

-Petty's Island, Pennsauken Township, Camden County, status update (no enclosure)

-Delaware Bay Migratory Shorebird Project 2016 Budget Request by Endangered and Nongame Species Program, status update (no enclosure)

VI. New Business

-Calendar Year 2016 Spending Authorization, for decision

-Nominating Committee Recommendations for Chair, Vice Chair, Secretary/Treasurer Officers, for election, for decision (no enclosure)

-Reinhardt Preserve-Bender/GA, Land Management Assignment Offer, Montague Township, Sussex County, for decision

-Hirst Ponds-Widmaier, Land Donation Offer, Galloway Township, Atlantic County, for decision

-Wildcat Branch Preserve-Project Area, Franklin Borough and Hardyston and Sparta Townships, Sussex County, for decision

-Tennessee Gas Pipeline (TGP) Plant Fund-Calendar Year 2016 Annual Work Plan, for decision

-New Jersey Wetlands Mitigation Council Resolution Approving Expenditures, for affirmation

-Draft 2015 Annual Report Text, for decision

-2016 Meeting Dates, for discussion

VII. Adjourn

THE NEW JERSEY NATURAL LANDS TRUST
STATEMENT OF FINANCIAL POSITION
SEPTEMBER 30, 2015

Statement 1

(See Accountant's Review Report)

	Fixed Asset Fund	General Fund	Hypoxen	Petty's Island	Petty's Island Cultural	Shorebird	TGP Acquisition	TGP Animals	TGP Plants	Wetlands Acquisition	Wetlands Mitigation	TOTAL
ASSETS												
Current Assets												
Cash and Cash Equivalents	\$ -	\$ 1,290,368	\$ 5,952	\$ 627,649	\$ 685,012	\$ 5,668	\$ 485,057	\$ 1,300,152	\$ 640,075	\$ 15,555	\$ 4,061,976	\$ 9,117,484
Tenants Escrow	-	3,035	-	-	-	-	-	-	-	-	-	3,035
Hirst Pond Endowment	-	25,000	-	-	-	-	-	-	-	-	-	25,000
Hainesville Wood	-	25,000	-	-	-	-	-	-	-	-	-	25,000
Accrued Interest Receivable	-	5,198	134	1,413	343	-	-	-	-	-	22,435	29,523
Total Current Assets	-	1,348,621	6,086	629,062	685,355	5,668	485,057	1,300,152	640,075	15,555	4,084,411	9,200,042
Fixed Assets												
Land	38,079,629	-	-	-	-	-	-	-	-	-	-	38,079,629
Equipment	2,364	-	-	-	-	-	-	-	-	-	-	2,364
Vehicles	15,544	-	-	-	-	-	-	-	-	-	-	15,544
Accumulated Depreciation	(17,908)	-	-	-	-	-	-	-	-	-	-	(17,908)
Total Fixed Assets	38,079,629	-	-	-	-	-	-	-	-	-	-	38,079,629
Other Assets												
Investments-Long Term (FMV)	-	744,225	75,338	195,400	438,397	188,114	-	-	-	-	3,725,944	5,367,418
Due From Related Fund	-	444	-	81,000	-	-	-	-	-	-	-	81,444
Total Other Assets	-	744,669	75,338	276,400	438,397	188,114	-	-	-	-	3,725,944	5,448,862
TOTAL ASSETS	\$38,079,629	\$2,093,290	\$ 81,424	\$ 905,462	\$ 1,123,752	\$ 193,782	\$ 485,057	\$ 1,300,152	\$ 640,075	\$ 15,555	\$ 7,810,355	\$ 52,728,533
LIABILITIES & NET ASSETS												
Liabilities												
Due To Related Fund	\$ -	\$ 81,000	\$ -	\$ 444	\$ -	\$ -	\$ -	\$ -	\$ -	\$ -	\$ -	\$ 81,444
Due to Endowment Account	-	50,000	-	-	-	-	-	-	-	-	-	50,000
Security Deposits Payable	-	2,792	-	-	-	-	-	-	-	-	-	2,792
Total Liabilities	-	133,792	-	444	-	-	-	-	-	-	-	134,236
Net Assets												
Unrestricted	-	2,060,337	-	-	-	-	-	-	-	-	-	2,060,337
Permanently Restricted	38,079,629	-	-	-	-	-	-	-	-	-	-	38,079,629
Temporarily Restricted	-	-	77,768	941,182	1,156,340	205,385	485,057	1,300,152	640,075	15,555	8,127,896	12,949,410
Unrealized Gain/Loss	-	(100,839)	3,656	(35,164)	(32,588)	(11,603)	-	-	-	-	(317,541)	(495,079)
Total Net Assets	38,079,629	1,959,498	81,424	905,018	1,123,752	193,782	485,057	1,300,152	640,075	15,555	7,810,355	52,594,297
TOTAL LIABILITIES & NET ASSETS	\$38,079,629	\$2,093,290	\$ 81,424	\$ 905,462	\$ 1,123,752	\$ 193,782	\$ 485,057	\$ 1,300,152	\$ 640,075	\$ 15,555	\$ 7,810,355	\$ 52,728,533

The accompanying notes are an integral part of the financial statements.

THE NEW JERSEY NATURAL LANDS TRUST
STATEMENT OF ACTIVITIES AND NET ASSETS
FOR THE NINE MONTH PERIOD ENDED SEPTEMBER 30, 2015

(See Accountant's Review Report)

Revenue (Restricted)	Trust Funds										TOTAL	
	Fixed Asset Fund	General Fund	Hypoxen	Petty's Island	Petty's Island Cultural	Shorebird	TGP Acquisition	TGP Animals	TGP Plants	Wetlands Acquisition		Wetlands Mitigation
Contribution Income	\$ -	\$ 25,000	\$ -	\$ 206,000	\$ -	\$ -	\$ 485,000	\$ 1,300,000	\$ 640,000	\$ -	\$ -	\$ 2,656,000
Expense												
Materials and Supplies	\$ -	\$ 266	\$ -	\$ -	\$ -	\$ -	\$ -	\$ -	\$ -	\$ -	\$ -	\$ 266
Services	-	16,830	-	-	-	-	-	-	-	-	-	16,830
Maintenance	-	7,685	-	-	-	-	-	-	-	-	-	7,685
Annual Report	-	198	-	-	-	-	-	-	-	-	-	198
Capital	-	485	-	-	-	-	-	-	-	-	-	485
Educational Programming	-	-	-	-	-	-	-	-	-	-	-	-
Other Authorized Expenditures	-	-	60,598	50,914	-	54,879	-	-	-	-	483,954	650,345
Depreciation Expense	-	-	-	-	-	-	-	-	-	-	-	-
Total Expenses	\$ -	\$ 25,464	\$ 60,598	\$ 50,914	\$ -	\$ 54,879	\$ -	\$ -	\$ -	\$ -	\$ 483,954	\$ 675,809
Other Income												
Rent Income	-	20,100	-	-	-	-	-	-	-	-	-	20,100
Interest/Dividend Income	-	14,124	949	4,274	8,190	4,398	57	152	75	3	84,766	116,988
Miscellaneous Income	-	5,417	-	-	-	-	-	-	-	-	-	5,417
Gain or Loss on Sale	-	-	-	-	-	-	-	-	-	-	-	-
Total Other Income	\$ -	\$ 39,641	\$ 949	\$ 4,274	\$ 8,190	\$ 4,398	\$ 57	\$ 152	\$ 75	\$ 3	\$ 84,766	\$ 142,505
Excess Revenues Over Expenses	\$ -	\$ 39,177	\$ (59,649)	\$ 159,360	\$ 8,190	\$ (50,481)	\$ 485,057	\$ 1,300,152	\$ 640,075	\$ 3	\$ (399,188)	\$ 2,122,696
Net Asset Balance Dec 31, 2014	\$ 38,079,629	\$ 1,922,075	\$ 141,036	\$ 748,011	\$ 1,117,352	\$ 247,074	\$ -	\$ -	\$ -	\$ 15,552	\$ 8,241,692	\$ 50,512,411
Land Acquisition	-	-	-	-	-	-	-	-	-	-	-	-
Unrealized Loss/Gain	-	(1,754)	37	(2,353)	(1,790)	(2,811)	-	-	-	-	(32,139)	(40,810)
Adjustment for Prior Period	-	-	-	-	-	-	-	-	-	-	-	-
Net Asset Balance Sept 30, 2015	\$ 38,079,629	\$ 1,959,498	\$ 81,424	\$ 905,018	\$ 1,123,752	\$ 193,782	\$ 485,057	\$ 1,300,152	\$ 640,075	\$ 15,555	\$ 7,810,355	\$ 52,594,297

The accompanying notes are an integral part of the financial statements.

THE NEW JERSEY NATURAL LANDS TRUST
STATEMENT OF FINANCIAL POSITION
DECEMBER 31, 2015

(See Accountant's Review Report)

	Fixed Asset Fund	General Fund	Hyponex	Petty's Island	Petty's Island Cultural	Shorebird	TGP Acquisition	TGP Animals	TGP Plants	Wetlands Acquisition	Wetlands Mitigation	TOTAL
ASSETS												
Current Assets												
Cash and Cash Equivalents	\$ -	\$ 1,459,550	\$ 5,964	\$ 599,506	\$ 685,641	\$ 5,671	\$ 485,208	\$ 1,300,556	\$ 640,274	\$ 15,560	\$ 3,425,362	\$ 8,623,282
Tenants Escrow	-	3,036	-	-	-	-	-	-	-	-	-	3,036
Hirst Pond Endowment	-	25,000	-	-	-	-	-	-	-	-	-	25,000
Hainesville Wood	-	25,000	-	-	-	-	-	-	-	-	13,475	25,000
Accrued Interest Receivable	-	1,919	370	774	1,219	-	-	1,300,556	640,274	15,560	3,438,837	17,757
Total Current Assets	-	1,514,505	6,324	600,280	686,860	5,671	485,208	1,300,556	640,274	15,560	3,438,837	8,694,075
Fixed Assets												
Land	38,079,629	-	-	-	-	-	-	-	-	-	-	38,079,629
Equipment	2,364	-	-	-	-	-	-	-	-	-	-	2,364
Vehicles	15,544	-	-	-	-	-	-	-	-	-	-	15,544
Accumulated Depreciation	(17,908)	-	-	-	-	-	-	-	-	-	-	(17,908)
Total Fixed Assets	38,079,629	-	-	-	-	-	-	-	-	-	-	38,079,629
Other Assets												
Investments-Long Term (FMV)	-	594,251	75,179	193,763	437,544	188,675	-	-	-	-	3,386,637	4,875,049
Due From Related Fund	-	444	-	81,000	-	-	-	-	-	-	-	81,444
Total Other Assets	-	594,695	75,179	274,763	437,544	188,675	-	-	-	-	3,386,637	4,957,493
TOTAL ASSETS	\$38,079,629	\$2,109,200	\$ 81,503	\$ 875,043	\$ 1,124,404	\$ 194,346	\$ 485,208	\$ 1,300,556	\$ 640,274	\$ 15,560	\$ 6,825,474	\$ 51,731,197
LIABILITIES & NET ASSETS												
Liabilities												
Due To Related Fund	\$ -	\$ 81,000	\$ -	\$ 444	\$ -	\$ -	\$ -	\$ -	\$ -	\$ -	\$ -	\$ 81,444
Due to Endowment Account	-	50,000	-	-	-	-	-	-	-	-	-	50,000
Security Deposits Payable	-	2,792	-	-	-	-	-	-	-	-	-	2,792
Total Liabilities	-	133,792	-	444	-	-	-	-	-	-	-	134,236
Net Assets												
Unrestricted	-	2,084,754	-	-	-	-	-	-	-	-	-	2,084,754
Permanently Restricted	38,079,629	-	77,733	915,392	1,158,130	210,237	485,208	1,300,556	640,274	15,560	7,207,067	38,079,629
Temporarily Restricted	-	-	3,770	(40,793)	(33,726)	(15,891)	-	-	-	-	(381,593)	12,010,157
Unrealized Gain/Loss	-	(109,346)	-	874,599	1,124,404	194,346	485,208	1,300,556	640,274	15,560	6,825,474	(577,579)
Total Net Assets	38,079,629	1,975,408	81,503	875,043	1,124,404	194,346	485,208	1,300,556	640,274	15,560	6,825,474	51,596,961
TOTAL LIABILITIES & NET ASSETS	\$38,079,629	\$2,109,200	\$ 81,503	\$ 875,043	\$ 1,124,404	\$ 194,346	\$ 485,208	\$ 1,300,556	\$ 640,274	\$ 15,560	\$ 6,825,474	\$ 51,731,197

THE NEW JERSEY NATURAL LANDS TRUST
STATEMENT OF ACTIVITIES AND NET ASSETS
FOR THE YEAR ENDED DECEMBER 31, 2015

(See Accountant's Review Report)

	Trust Funds										TOTAL	
	Fixed Asset Fund	General Fund	Hyponex	Petty's Island	Petty's Island Cultural	Shorebird	TGP Acquisition	TGP Animals	TGP Plants	Wetlands Acquisition		Wetlands Mitigation
Revenue (Restricted)												
Contribution Income	\$ -	\$ 25,000	\$ -	\$ 206,000	\$ -	\$ -	\$ 485,000	\$ 1,300,000	\$ 640,000	\$ -	\$ -	\$ 2,656,000
Expense												
Materials and Supplies	-	266	-	-	-	-	-	-	-	-	-	266
Services	-	17,595	-	-	-	-	-	-	-	-	-	17,595
Maintenance	-	22,259	-	-	-	-	-	-	-	-	-	22,259
Annual Report	-	198	-	-	-	-	-	-	-	-	-	198
Capital	-	485	-	-	-	-	-	-	-	-	-	485
Educational Programming	-	-	-	-	-	-	-	-	-	-	-	-
Other Authorized Expenditures	-	-	60,598	81,089	-	54,879	-	-	-	-	1,467,955	1,664,521
Depreciation Expense	-	-	-	-	-	-	-	-	-	-	-	-
Total Expenses	\$ -	\$ 40,803	\$ 60,598	\$ 81,089	\$ -	\$ 54,879	\$ -	\$ -	\$ -	\$ -	\$ 1,467,955	\$ 1,705,324
Other Income												
Rent Income	-	25,900	-	-	-	-	-	-	-	-	-	25,900
Interest/Dividend Income	-	21,326	951	6,306	8,190	6,439	208	556	274	8	115,799	160,057
Miscellaneous Income	-	30,417	-	-	-	-	-	-	-	-	-	30,417
Gain or Loss on Sale	-	-	-	-	-	-	-	-	-	-	-	-
Total Other Income	\$ -	\$ 77,643	\$ 951	\$ 6,306	\$ 8,190	\$ 6,439	\$ 208	\$ 556	\$ 274	\$ 8	\$ 115,799	\$ 216,374
Excess Revenues Over Expenses	\$ -	\$ 61,840	\$ (59,647)	\$ 131,217	\$ 8,190	\$ (48,440)	\$ 485,208	\$ 1,300,556	\$ 640,274	\$ 8	\$ (1,352,156)	\$ 1,167,050
Net Asset Balance Dec 31, 2014	\$ 38,079,629	\$ 1,922,075	\$ 141,036	\$ 748,011	\$ 1,117,352	\$ 247,074	\$ -	\$ -	\$ -	\$ 15,552	\$ 8,241,682	\$ 50,512,411
Land Acquisition	-	-	-	-	-	-	-	-	-	-	-	-
Unrealized Loss/Gain	-	(8,507)	114	(4,629)	(1,138)	(4,288)	-	-	-	-	(64,052)	(82,500)
Adjustment for Prior Period	-	-	-	-	-	-	-	-	-	-	-	-
Net Asset Balance Dec 31, 2015	\$ 38,079,629	\$ 1,975,408	\$ 81,503	\$ 874,599	\$ 1,124,404	\$ 194,346	\$ 485,208	\$ 1,300,556	\$ 640,274	\$ 15,560	\$ 6,825,474	\$ 51,596,961

The accompanying notes are an integral part of the financial statements.

**MINUTES OF THE
NATURAL LANDS TRUST MEETING
October 16, 2015
12:00 PM**

Office of Natural Lands Management, Trenton, New Jersey

Chairman Catania called the meeting to order at 12:01 PM and roll was taken. A quorum of trustees was present. At least one of the trustees was a state governmental representative.

The Open Public Meetings Act notice was read as follows: Notice of the date, time, location and agenda, to the extent known, was forwarded to three newspapers of general circulation, and provided to the Secretary of State in accordance with the Open Public Meetings Act. It was also noted that such notice was provided on the Trust's website in compliance with the Act requiring State, regional, and local authorities, boards, and commissions to establish a website providing specific information in order to facilitate transparency in government.

In attendance were:

Michael Catania, Chairperson
James Hall, Vice Chairperson
Theresa Lettman, Trustee/Secretary-
Treasurer
Judeth Yeany, DEP Trustee
Larry Torok, DEP Trustee arrived 12:19 PM
Steve Eisenhauer, Trustee
Matt Spayth, Trustee representative for the
State Treasurer

Adrienne Kreipke, alternate for Rich
Boornazian, Trustee representative for the
DEP Commissioner
Ryan Benson, DAG, Trust Counsel
Robert J. Cartica, Executive Director
Martin Rapp, Trust Staff
Cari Wild, Trust Staff

Absent were:

Emile DeVito, Trustee
Thomas Gilmore, Trustee
State House Commission representative (not appointed)

Guests:

Dale Rosselet, New Jersey Audubon Society
Kelly Wenzel, New Jersey Audubon Society
Ken Orben, Crowley Marine
John Hourihan, Crowley Marine
Karen Dempsey, Crowley Marine

General Public Comment: Representatives of Crowley Marine advised the Board that it is the leading ocean cargo carrier between the United States and Puerto Rico, the Eastern and Western Caribbean and Central America. Crowley operates a roll on/roll off facility at Petty's Island as part of its liner services. Crowley's lease with CITGO Petroleum for its Petty's Island facility will expire in 2017. Crowley currently employs approximately 90 employees. The Crowley representatives provided information to the Board about the history and future plans of Crowley and its liner services beyond the expiration of its lease with CITGO Petroleum.

Financial Report: Mr. Cartica outlined the Financial Statements for the quarter ending June 30, 2015. Mr. Hall motioned to approve the Financial Statements. Ms. Kreipke seconded the motion and the Financial Statements were unanimously approved by a vote of 8 to 0.

The **June 5, 2015 minutes** were reviewed. Mr. Hall motioned to approve the minutes. Mr. Eisenhower seconded the motion and the minutes were unanimously approved by a vote of 8 to 0.

Unfinished Business:

Ms. Wild provided the Board with a **Petty's Island, Pennsauken Township, Camden County Status Report**

The Trust recently awarded a contract for an engineering feasibility study of the Crowley Ramp as a potential future visitor's center location. Based upon structural integrity analyses of the foundation and subsurface piers, the consultant found that the structure was sound and appropriate for use as the Cultural and Environmental Education Center. Additional study including a lateral analysis will be required after the building is designed.

In July, the William Penn Foundation awarded the Trust a grant in the amount of \$175,000 that, among other things, funds the services of a historian to research the history of Petty's Island as well as a documentary filmmaker(s) to make short films telling the story of Petty's Island's preservation and history. This month, the Trust awarded a contract to Hunter Research to conduct the historical research. The William Penn grant will also fund educational programming for the upcoming year.

The Trust awarded a contract to the New Jersey Audubon Society (NJAS) for educational programming at the Petty's Island Preserve on November 1, 2011. It was a one-year contract with provision for renewal for four additional one-year terms. The Trust and NJAS have again enjoyed a very successful year of programming as will be explained in detail by Ms. Wenzel. Based on this success, the Trust will renew its contract with the NJAS and its subcontractors, Delaware Riverkeeper and Cooper River Watershed Association. Ms. Wenzel provided a power point presentation about the educational programming provided by NJAS during 2014-2015 and their plans for the upcoming 2015-2016 year.

New Business:

Mr. Catania advised the Board that the Endangered and Nongame Species Program (ENSP) and the Conserve Wildlife Foundation (CWF) were still working out the details of the **Delaware Bay Migratory Shorebird Project 2016 Budget Request**. ENSP and CWF have advised that the proposed budget may be as high as \$102,500. The 2015 budget was \$58,800, \$44,000 less than the \$102,800 budgeted in 2014. In 2015, approximately \$55,000 was expended. The variability of budget requests, and occasional discrepancy between what is budgeted and what is spent, results from the uncertainty of the availability of federal funds for Delaware Bay shorebird activities. ENSP has done a tremendous job in obtaining federal funding for shorebird activities over the past couple of years, lessening the need for the Trust's Shorebird funds. Given the limited amount of funds remaining in the Trust's Shorebird account (approximately \$170,000 after this year's expenses are processed), the Board expressed its appreciation and support for efforts to maximize the use of federal funds for the continuation of the studies and surveys which were critical to the federal listing of red knot and horseshoe crab harvest quotas.

Based on a concern that the Board's limited meeting schedule might cause a delay in important shorebird activities, Mr. Catania suggested that the Board consider approving a conditional 2016 shorebird budget with the specifics of the budget subject to review and approval by the Executive Director and the Chair. It was noted that the Board typically approves the budget with a rider authorizing a reallocation of expenses between categories, subject to a limitation of the total budgeted amount, and authorized a \$35,000 upfront payment to CWF in order to fund Delaware Bay shorebird work to be done in May and June 2016 with receipts for such work to be provided at a later time. Ms. Kreipke motioned to approve the 2016 budget up to \$102,500, the specifics of which will be subject to approval by the Executive Director and the Chair, with a reallocation rider and upfront \$35,000 payment. Mr. Torok seconded the motion and the 2016 shorebird budget was approved by a vote of 8 to 0.

The Board considered the **Reinhardt-DiCola Land Donation Offer in Montague Township, Sussex County**. Ms. Yeany motioned to approve the land donation. Mr. Torok seconded the motion and the offer was unanimously approved by a vote of 8 to 0.

The Board considered the **Clarks Landing-Izenberg Land Donation Offer in Galloway Township, Atlantic County**. Ms. Lettman motioned to approve the land donation subject to an inspection by Trust staff and the property being found in acceptable condition. Mr. Eisenhauer seconded the motion and the offer was unanimously approved by a vote of 8 to 0.

The **2015 remaining Board meeting date is** December 4, 2015.

Ms. Kreipke motioned for the meeting to be adjourned. Mr. Hall seconded the motion, and the meeting was adjourned at 1:42 PM by a unanimous vote of 8 to 0.

Respectfully submitted,

Theresa Lettman
Secretary/Treasurer



**NEW JERSEY NATURAL LANDS TRUST
SPENDING AUTHORIZATION FOR
CALENDAR YEAR 2016**

	<u>2015 Authorization</u>	<u>2015 Expenditure</u>	<u>2016 Authorization</u>
MATERIALS AND SUPPLIES	\$2,000	\$266	\$2,000

General Printing, Office Supplies and Mail Services - \$2,000

Includes routine office supplies, photocopying, reference materials and publications, maps and reproduction of maps, creating signage, and similar expenses. Production and printing of the Annual Report is not included under this category. If needed, this item will fund additional functions for outreach and volunteers for management and acquisition.

SERVICES	\$36,700	\$17,595	\$36,700
-----------------	-----------------	-----------------	-----------------

Travel - \$700

Includes funds for refreshments for Board meetings, travel and parking reimbursement for meetings of Board of Trustees, and staff reimbursement for occasional use of personal vehicles.

Information Processing - \$1,000

Includes computer repairs and purchase of software.

DAG Expenses – \$20,000

Includes charges assessed to the Trust for professional services provided by staff of the Attorney General's office.

Other Professional Services - \$15,000

Includes cost of professional accounting services, maintenance of the Trust's website, title searches and filing fees for land donations, legal advertisement of Board of Trustees meeting dates, membership fees and bank service charges. Also includes routine professional service contracts for surveys and preparation of deeds. Minimal back taxes are included as part of this line; however, substantial tax payments will be included in each offering brought to the Board.

MAINTENANCE AND FIXED CHARGES	\$57,100	\$22,259	\$73,000
--	-----------------	-----------------	-----------------

General Maintenance of Buildings, Grounds, Equipment and Vehicle - \$23,000

Includes funds for maintenance of rental units (including furnace or roof replacement, road regrading, power restoration, and other emergency measures), gates and access, safety/stabilization needs, tree trimming and removal, encroachment surveys, etc., as needed. Major planned

2015 Authorization 2015 Expenditure 2016 Authorization

maintenance and capital improvement projects are not included within this authorization and would be submitted individually, together with a recommended funding source, to the Board for consideration.

Conservation/Preserve Management Projects - \$50,000

The following planned projects are relevant to the Trust’s mission of preservation of biodiversity. The costs for each project are gross estimates and quotes have not yet been sought.

Warren Grove Bog Preserve biodiversity inventory:	\$20,000
Bear Swamp at Red Lion Pine Barrens treefrog/vernal pool survey:	\$2,000
Hainesville Wood’s small whorled pogonia plant survey/mapping	\$1,000
Hyper Humus wetland plant survey	\$4,000
Buttermilk Bridge Seneca snakeroot plant survey:	\$2,000
Sweet Hollow Preserve Wild Comfrey plant survey	\$2,000
Mt. Rascal butterfly survey:	\$2,000
Hardwick Meadows northern metalmark, butterfly survey:	\$2,000
Penny Pot rare plant and herptile survey:	\$2,000
Hirst Ponds Pine Barrens treefrog survey:	\$500
Sooy Place Pine Barrens treefrog survey:	\$500
Long-a-Coming Pine Barrens treefrog/vernal pond survey:	\$500
Monarch butterfly / pollinator habitat enhancement:	\$500
Crossley Wrangle Branch curly grass fern/swamp pink survey:	\$1,000
Crossley pine snake habitat management :	\$1,000
Swamp pink survey:	\$500
Bennett Bogs brush removal and herbicide:	\$3,000
High Mountain plant inventory/ invasive control	\$2,000
Various preserves - barn own, kestrel boxes:	\$500
Various preserves - bog turtle habitat management:	\$3,000

ANNUAL REPORT	\$250	\$198	\$250
----------------------	--------------	--------------	--------------

2013 Annual Report - \$250

The requested authorization includes the cost of graphic layout and development of the annual report for posting on the Trust’s website.

CAPITAL	\$5,000	\$485	\$3,000
----------------	----------------	--------------	----------------

Miscellaneous Equipment Purchase and Replacement - \$3,000

This budget allows for miscellaneous small equipment purchases used for land management and office function.

TOTAL SPENDING AUTHORIZATION	\$101,050	\$40,803	\$114,950
-------------------------------------	------------------	-----------------	------------------



**The New Jersey Natural Lands Trust
LAND OFFERING FORM**

Site Name: Reinhardt-Bender/GA
ID#: 750-15

Donor(s): Green Acres
Address: PO Box 412
City, State, Zip: Trenton, NJ 08625
Phone: 609-984-0500
Agent/Contact: Richard Osborn

Municipality: Montague Township
County: Sussex
Quad Name:
Frontage: Steenykill Road
Blocks: 9
Lots: 3

Acreage/dimensions: 8
Zoning:
Assessed value: \$62,800
Annual taxes:

Improvements: None
Offer restrictions: None
Offer contingencies: None
ROWs or easements: None
Type of Acquisition: Agreement

Property taxes paid through end of year transfer: Yes
Property taxes paid by: Property Owner

Farmland assessed: No

Estimated annual management costs:
Land management fund donation: No

Owner will prepare deed: Green Acres will prepare deed
Intended date of closing:
Owner will provide property survey & monuments: Green Acres will provide survey/monuments

Description of Offering

This eight-acre property is located in Montague Township, Sussex County. It has road frontage on Steenykill Road. This property is just outside of the Reinhardt Project Area but is adjacent to the Trust's Reinhardt Preserve.

Ecological Description

The property consists of a mature mixed hardwoods forest. A healthy forest, the woodlands show little or no evidence of invasive species. The property is ranked Landscape 4 by the New Jersey Endangered and Nongame Species Program which has identified this property as habitat for the state-endangered timber rattlesnake and bobcat. The property also supports habitat for the state-threatened barred owl as well as a variety of songbirds.

Management Issues and Concerns

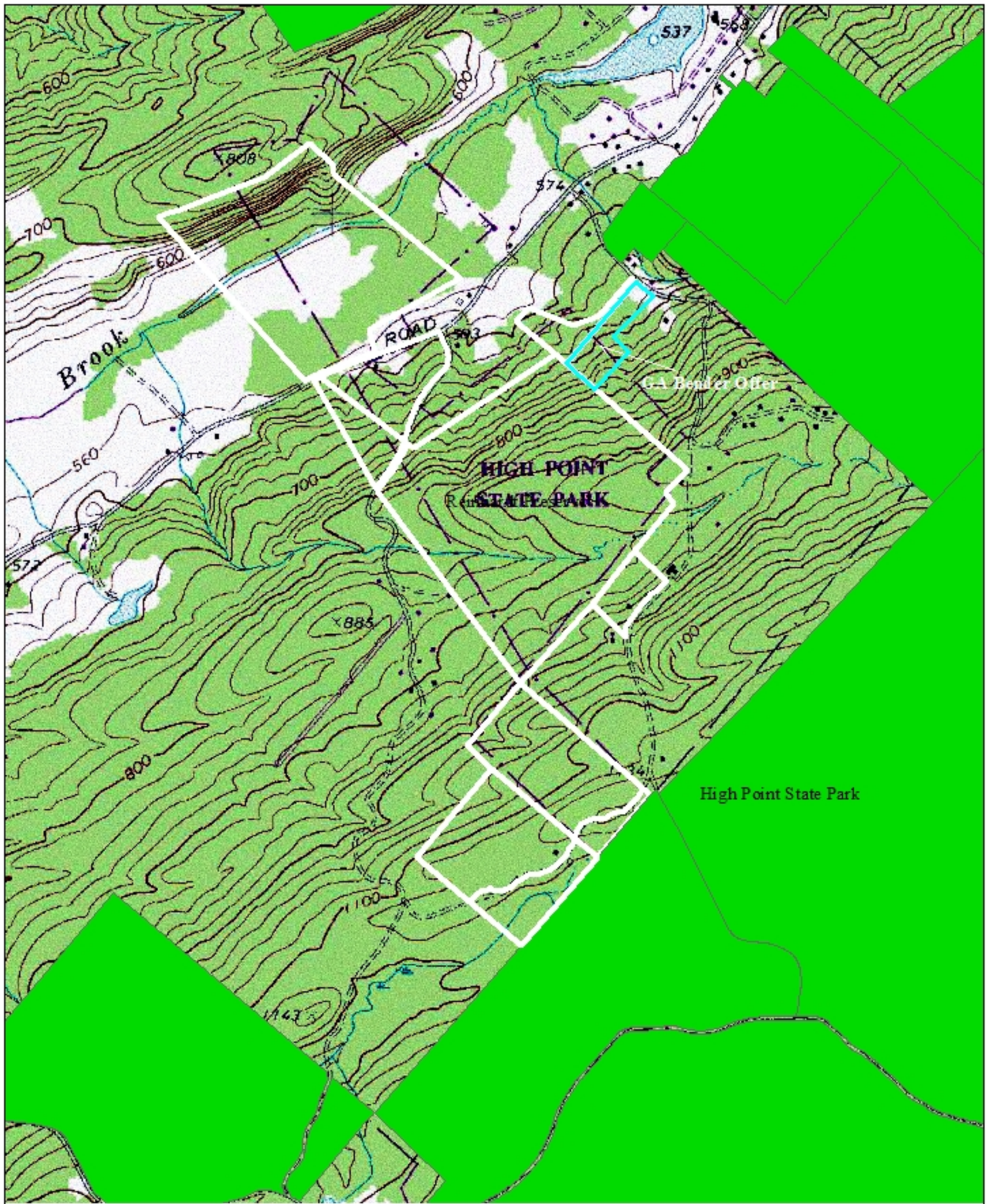
Trust staff inspected this property January 6, 2016 and did not find any issues or concerns. Moreover, based on its proximity to the existing Reinhardt Preserve, staff does not expect this property to pose any new or additional management issues or concerns.

Acquisition Criteria

The property meets the Board's acquisition criteria for Endangered Species Habitat since it includes suitable habitat for state or federally listed plant or animal species. There is no offer of a land management donation.

Staff Recommendations

Staff recommends the approval of this Green Acres Land Management Assignment as part of the Reinhardt Preserve.

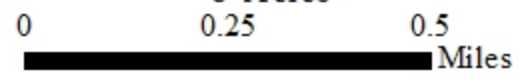


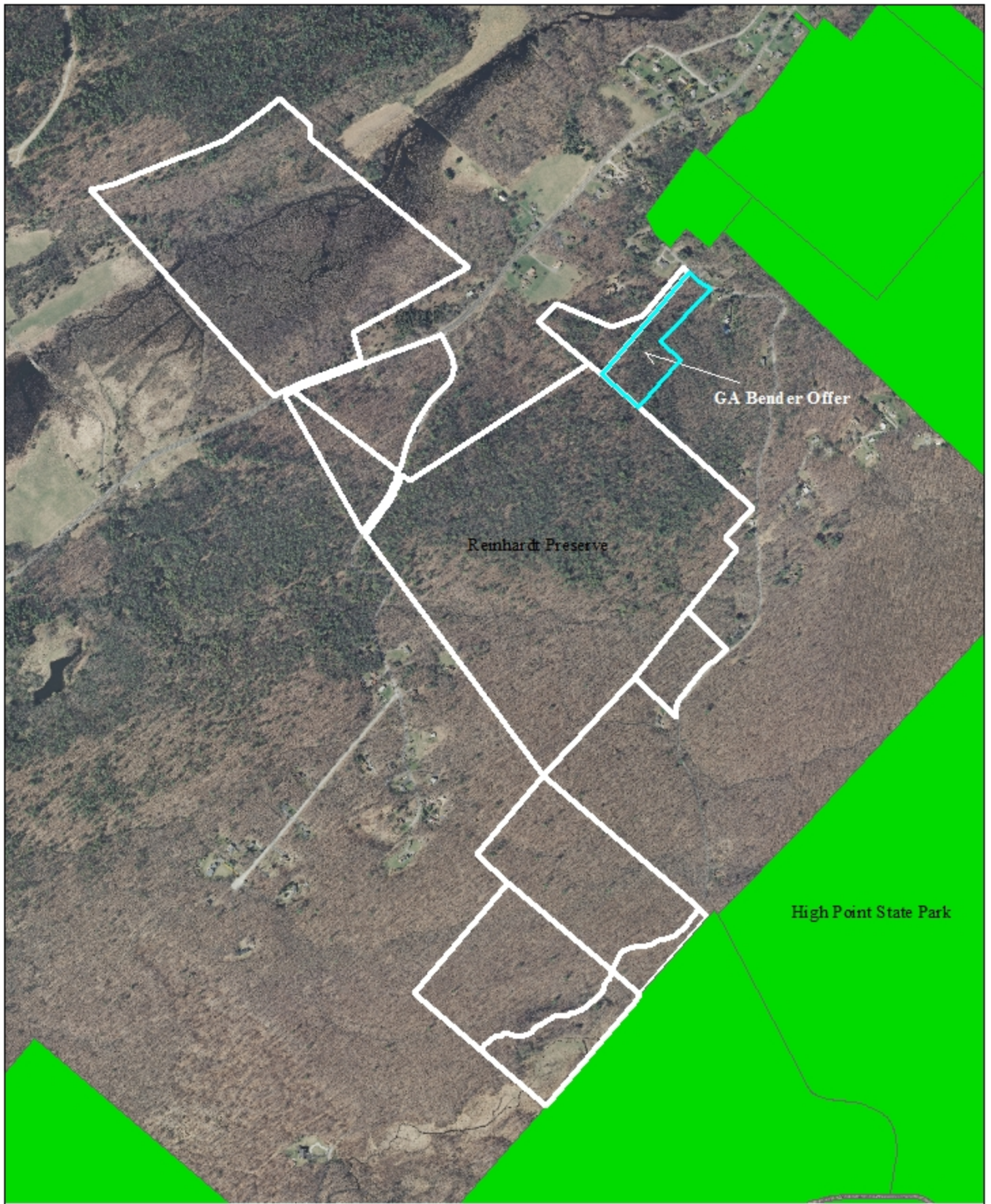
New Jersey Natural Lands Trust

Reinhardt Preserve - Bender

Montague Township, Sussex County, New Jersey

8 Acres





New Jersey Natural Lands Trust

Reinhardt Preserve - Bender

Montague Township, Sussex County, New Jersey

8 Acres

0 0.25 0.5 Miles





**The New Jersey Natural Lands Trust
LAND OFFERING FORM**

Site Name: Hirst Ponds-Widmaier
ID#: 325-02

Donor(s): Carol and Kurt Widmaier
Address: 174 Ninth Avenue, PO Box 88
City, State, Zip: Estell Manor, NJ 08319
Phone: (609) 703-1342
Agent/Contact:

Municipality: Galloway Township
County: Atlantic
Quad Name:
Frontage: Vienna Avenue
Block: 264
Lot: 13
Acreage/dimensions: Approximately 20 acres
Zoning:
Assessed value: \$135,000
Annual taxes:

Improvements: None
Offer restrictions: None
Offer contingencies: None
ROWs or easements: None
Type of Acquisition: Donation of Fee

Property taxes paid through end of year transfer: Yes
Property taxes paid by: Property owner

Farmland assessed: No

Estimated annual management costs:
Land management fund donation: No

Deed Preparation: Trust will prepare deed
Intended date of closing: Before December 31, 2016
Property survey & monuments: As exist

Description of Offering

This 20-acre Land Donation Offer is located in Galloway Township, Atlantic County. The property has road frontage on Vienna Avenue. The property is in close proximity to the Trust's Hirst Ponds Preserve although it is not contiguous with the ponds that comprise Hirst Ponds. The New Jersey Division of Fish and Wildlife manages a property across the street that was acquired and assigned to them under the Limited Practical Use Program but they are not interested in this donation at least at this time.

Ecological Description

This property is representative habitat of the outer coastal plain physiographic province and includes a pitch pine forest with pockets of forested wetlands. There is a coastal plain intermittent pond near the road which should be evaluated for rare plant species such as state-endangered Hirst Brothers' panic grass. The entire property is ranked 3 under the Landscape Project because it provides suitable habitat for state-threatened barred owl.

Management Issues and Concerns

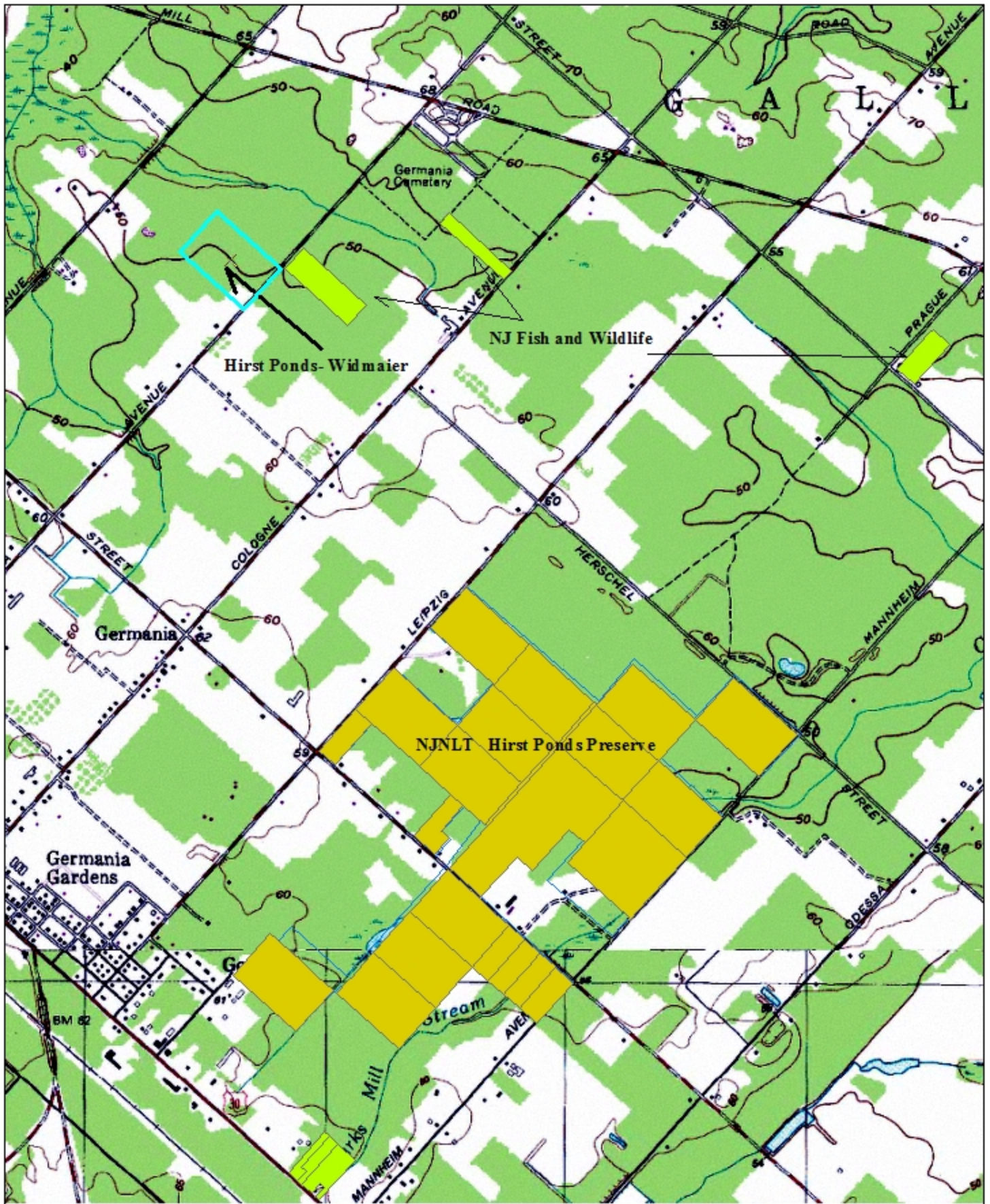
Staff inspected this property on February 18, 2016 and observed that pine trees had been cut along the woods road that runs through the middle of almost the entire property. Some of the pine was cut into firewood lengths and stacked near the woods road. Overall, the cut is fairly minimal and does not present a management concern. Staff noticed that nearby properties had been hit very hard with southern pine beetle damage but did not see any signs of beetle damage on this property. It appeared that some neighbors had created a few trails used by ATVs on this property and adjacent properties but the trails appeared not to have been used in quite a while. Based on its proximity to the existing Hirst Ponds Preserve, staff does not expect management of this additional property to pose any management concerns.

Acquisition Criteria

The property meets the Board's acquisition criteria for Endangered Species Habitat since it includes suitable habitat for state or federally listed plant or animal species. This is a land donation offer from an estate without a monetary land management donation.

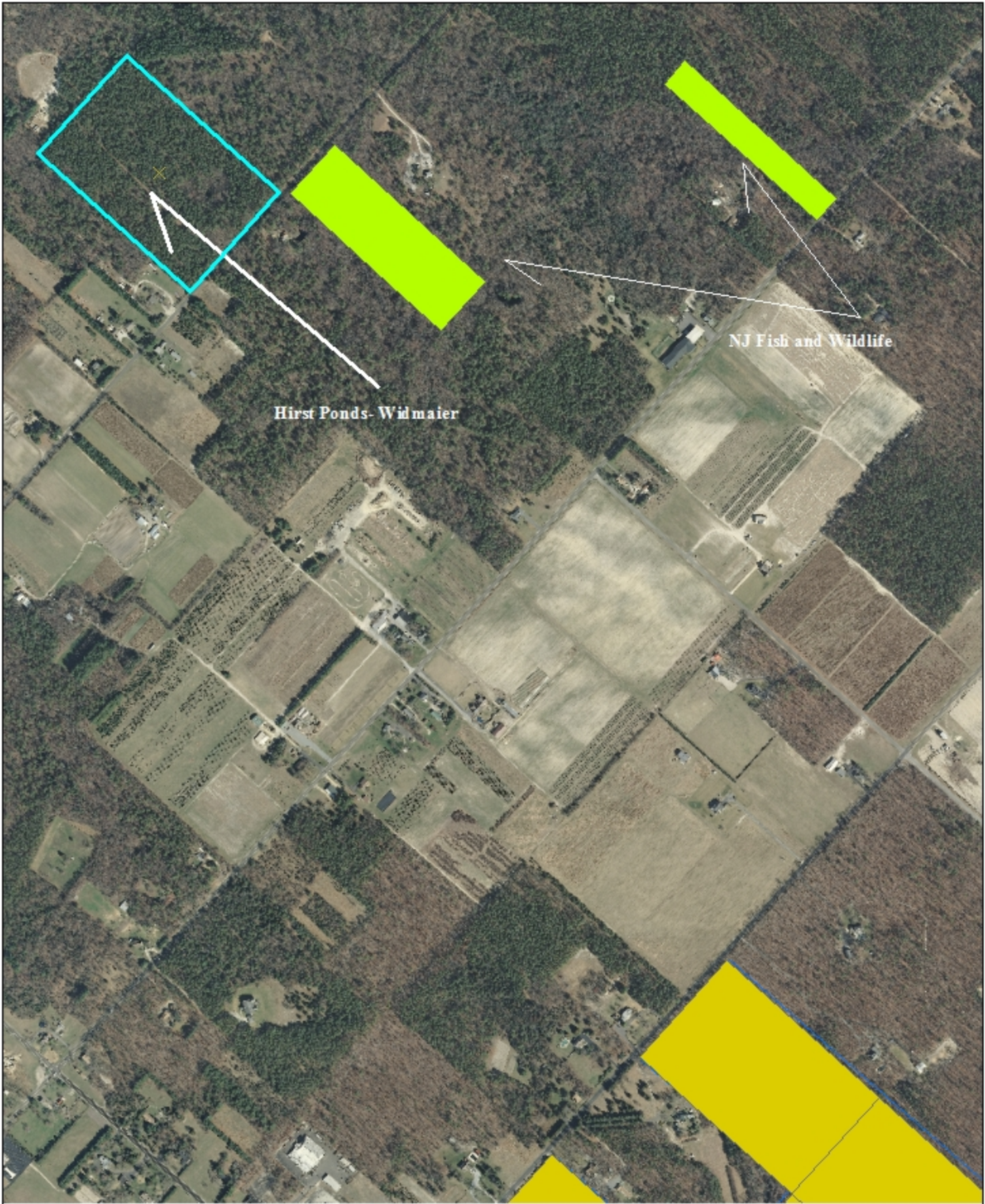
Staff Recommendations

Staff recommends the approval of this Land Donation Offer as an addition to the Trust's Hirst Ponds Preserve.



New Jersey Natural Lands Trust
Hirst Ponds Preserve - Widmaier
 Galloway Township, Atlantic County, New Jersey
 0 0.25 0.5 1 Miles
 20 Acres

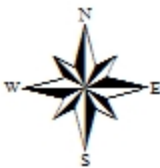




New Jersey Natural Lands Trust

Hirst Ponds Preserve - Widmaier

Galloway Township, Atlantic County, New Jersey
20 Acres





WILDCAT BRANCH PROJECT AREA
Franklin, Hardyston and Sparta Townships, Sussex County
March 4, 2016

Description of Project Area

The approximately 800-acre Wildcat Branch Project Area in Franklin, Hardyston, and Sparta townships, Sussex County encompasses 130 acres already managed by the Trust as its Wildcat Branch Preserve. In addition to adding properties recently offered for sale to the Green Acres Program (Kinzler #8822 approximately 10 acres and Pascual #8498 approximately 18 acres), the Project Area proposes to expand in all directions beyond the existing preserve to additional areas of the Wildcat Ravine and Bog Natural Heritage Priority Sites and to provide connectivity to other preserved lands. The Project Area is generally bounded by Old Prospect School, Davis, Maple and Wildcat roads.

Ecological Description

The Project Area lies within the glaciated Ridge and Valley region of northwestern New Jersey. The Wildcat Branch, a tributary of the Wallkill River, runs through the project area. The project area is comprised of approximately 60 percent upland mixed hardwood forest, 20 percent freshwater wetlands and limestone fen, and 20 percent agricultural, quarry, or developed lands. The Wildcat Branch Project Area encompasses part of the Wildcat Bog and Ravine Natural Heritage Priority Site which includes a wide variety of plant occurrences including state-endangered putty root, long-head anemone, grooved yellow flax and other rare plants including tufted loosestrife, fen rush, lesser panicled sedge, swamp birch, prairie sedge, devil's bit, bristly greenbrier and dwarf hackberry. The project area also contains habitat for the federally-threatened, state-endangered bog turtle, state-endangered bobcat, and state-threatened wood turtle.

Management Issues and Concerns

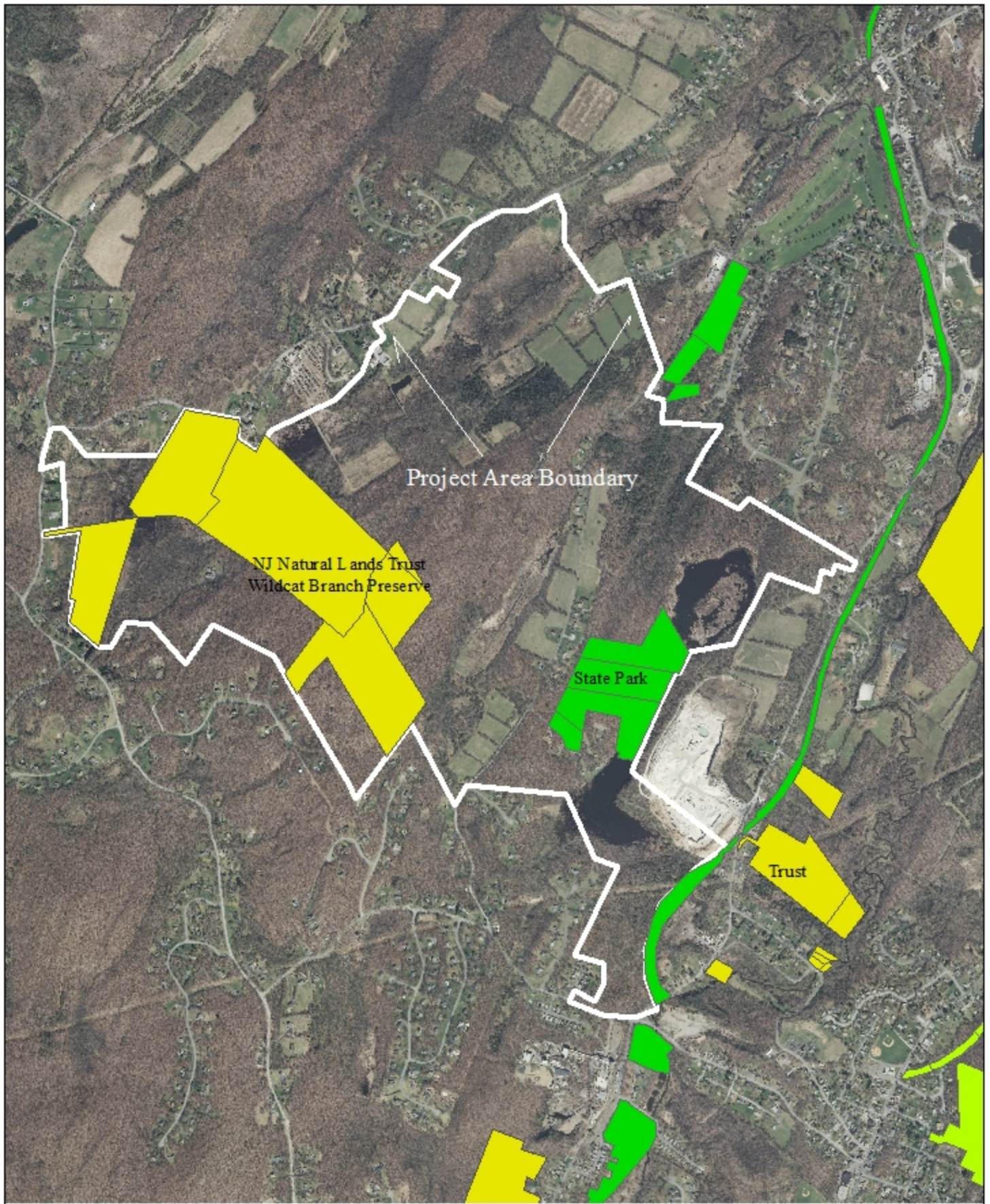
Improved properties and quarry lands are not targeted for acquisition although partial acquisition of vacant land within a developed lot is a possibility. Staff is very familiar with the Project Area based on its management of the Wildcat Branch Preserve. Based on its knowledge of the area, staff expects no significant management issues or concerns.

Acquisition Criteria

Properties within this Project Area meet the acquisition criteria for Endangered Species Habitat since they include habitat for a state or federally listed plant or animal species or suitable buffers to protect such species.

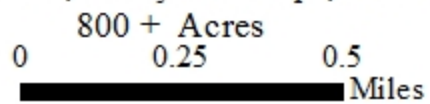
Staff Recommendations

Staff recommends the approval of this Project Area to preserve critical plant and animal habitat and to facilitate Green Acres' acquisition of properties in the area. As required by the Trust's Guidelines for Land Acquisition, lands within the Project Area that would present management concerns, such as structures, improvements or contamination or that would require the expenditure of Trust funds, would be brought to the Board for specific approval before acquisition.



New Jersey Natural Lands Trust


Wildcat Branch Project Area
Sparta, Franklin, Hardyston Twps, Sussex County, New Jersey





The New Jersey
NATURAL LANDS TRUST

To: Mark Texel, Director
Division of Parks and Forestry

From: Robert J. Cartica, Executive Director
New Jersey Natural Lands Trust 

Date: February 24, 2016

Subject: TGP Plant Fund - Annual Work Plan for Calendar Year 2016

A 2015 Memorandum of Agreement (MOA) between the Division of State Forestry Services, now Division of Parks and Forestry (Division), and the New Jersey Natural Lands Trust (Trust) outlines procedures for the transfer and management of mitigation funds received from the Tennessee Gas Pipeline Company, LLC and transferred from the Division to the Trust (TGP Plant Fund).

The MOA requires that no later than March 1 of each year the Division shall provide to the Trust an Annual Work Plan and a certification signed by the Division Director for disbursements from the TGP Plant Fund during the calendar year. Enclosed for your review and approval is a draft 2016 Annual Work Plan and certification form which will be presented to the Board of Trustees of the Trust at its annual financial meeting scheduled for March 4, 2016.

Proposed expenditures during 2016 are to be used to hire a part-time employee under the Office of Natural Lands Management's hourly employee blanket to assist the Natural Heritage Program in its botanical survey and database function, with emphasis on State Park Service properties impacted by the Tennessee Gas Pipeline Company, LLC construction of its Northeast Upgrade Project. Per the enclosed CY 16 Annual Work Plan, the ONLM recommends expenditures from the TGP Plant Fund of \$32,200.00.

Please sign and date the enclosed expenditure certification if you approve of the CY 16 Annual Work Plan and TGP Plant Fund disbursement.

Please feel free to contact me if you have any questions.

Enclosure

c: Richard Boornazian
Robin Madden
John Sacco

TGP Plant Fund - Annual Work Plan for Calendar Year 2016

Division of Parks and Forestry

February 24, 2015

The Division of Parks and Forestry (Division) authorizes the following expenditures from the New Jersey Natural Lands Trust's TGP Plant Fund during Calendar Year 2016:

Assistant Botanist to be added to the Office of Natural Lands Management's hourly blanket #804143 to perform duties in support of the New Jersey Natural Heritage Program, including botanical field survey and data collection, database entry, project/activity review, and related tasks and duties.

Estimated Budget:

Salary: 13.5 pay periods (27 weeks) from June 25, 2016 to December 30, 2016; hourly wage of \$30.00; 70 hours per pay period

Subtotal Salary: \$28,350.00

Operating: Personal Computer @ \$2,000.00; OIRM assessment @\$1850.00

Subtotal Operating: \$3,850.00

Total Budget: \$32,200.00



**NEW JERSEY NATURAL LANDS TRUST
CERTIFICATION FOR TRUST EXPENSES**

VENDOR NAME: Treasurer, State of NJ

INVOICE NUMBER: N/A

GENERAL FUND:

Materials and Supplies

General Printing/Office Supplies []
Clothing/Volunteer Materials []

Maintenance and Fixed Charges

General Maintenance []
Major Project []

Services Other Than Personnel

Travel []
Information Processing []
DAG Charges []
Professional Services []

Annual Report []

Capital []

OTHER FUND:

Shorebird Fund

ENSP []
Conserve Wildlife []

Wetlands Mitigation Acquisition Fund

Real Property []
Acquisition Cost []

Wetlands Mitigation Fund []

Other Fund: TGP Plant Fund

ITEM	COST
Salary and operating expenses for part-time Assistant Botanist hourly employee under ONLM blanket #804143, June 25, 2016 to December 30, 2016	\$32,200.00
	\$32,200.00

I certify that the goods or services described above have been received or rendered as stated. A vendor's receipt is attached.

Signature _____ 

Date _____ 2/24/16

AUTHORIZATION NUMBER: _____	CHECK NUMBER: _____	CREDIT CARD: <input type="checkbox"/>
DISBURSEMENT APPROVAL: _____	DATE OF DISBURSEMENT: _____	
DATE OF COMPUTER ENTRY: _____	DATE CHECK MAILED: _____	

**RESOLUTION OF THE NEW JERSEY NATURAL LANDS TRUST
APPROVING DISBURSEMENTS TOTALING \$976,240.04 FROM THE WETLANDS
MITIGATION FUND TO THE GREEN TRUST ALLIANCE, INC.**

WHEREAS, the New Jersey Wetlands Mitigation Council (hereinafter “Council”), and the New Jersey Natural Lands Trust (hereinafter “Trust”), entered into a Memorandum of Understanding (hereinafter “MOU”) dated April, 28, 2004 to establish a framework for the transfer and management of funds and real estate donated to the Council; and

WHEREAS, the MOU does not create any substantive standards under which mitigation proposals will be reviewed or impose any legal obligations on the public. It is intended to avoid unnecessary duplication of effort between the Council and Trust; and

WHEREAS, the Council was created by Law of 1987, c.156 (N.J.S.A. 13:9B-14) as a public body in but not of the Department of Environmental Protection, and the statutory responsibilities of the Council include the governance of the Wetlands Mitigation Bank and the disbursement of funds from the Bank to finance mitigation projects, the purchase of land to provide areas to restore or enhance degraded wetlands, and the purchase of land to preserve wetlands and transition areas determined to be of critical importance in protecting wetlands; and

WHEREAS, based on its statutory authority to receive moneys and invest same in an interest-bearing account, under the MOU the Trust has agreed to manage moneys that are collected by the Council and to invest such moneys in an account known as the Wetlands Mitigation Fund; and

WHEREAS, under the MOU the Council retained authority to determine what moneys it collects should be transferred into the Wetlands Mitigation Fund and to determine how those moneys are spent. The MOU specified that the Council shall continue to exercise its discretion over the Wetlands Mitigation Fund as to the selection of appropriate real estate acquisitions, restoration projects, mitigation projects and research projects that meet the statutory goals of the Freshwater Wetlands Protection Act except with respect to the specific transfer of funds to the Trust for the purchase of land as provided in paragraph 3 of the MOU. The Executive Director of the Trust shall disburse the moneys for projects approved by a resolution of the Council; provided, however, that disbursements exceeding \$250,000 shall require the authorization of the Trust’s Board, which shall act on any request for such authorization within ten working days after the Executive Director’s receipt of a request for disbursement from staff to the Council; and

WHEREAS, projects that are approved by a resolution of the Council are hereby deemed to be in furtherance of the purposes of the Trust on the basis that they are required by law to be in accordance with the Freshwater Wetlands Protection Act (N.J.S.A. 13:9B-1 et seq., specifically N.J.S.A. 13:9B-15) as well as to preserve natural diversity; and

WHEREAS, the Council approved resolutions on April 1, 2014 and August 5, 2014 approving grant funding to Green Trust Alliance, Inc. (GTA) for the enhancement of wetlands at Lenape Farms-Tuckahoe Wildlife Management Area in Estell Manor City, Atlantic County and the enhancement of urban floodplain and wetlands associated with the Thompson Park Conservation Area in Monroe Township, Middlesex County; and

WHEREAS, on December 1, 2015 the Council submitted to the Trust a request for two payments to GTA totaling \$976,240.04; and

NOW THEREFORE BE IT RESOLVED that the Trust finds the enhancement of wetlands at Lenape Farms-Tuckahoe Wildlife Management Area in Estell Manor City, Atlantic County and the enhancement of urban floodplain and wetlands associated with the Thompson Park Conservation Area in Monroe Township, Middlesex County to be consistent with the intent of the MOU between the Council and the Trust and authorizes the Executive Director or the Secretary-Treasurer to make disbursements totaling \$976,240.04 to the GTA, subject to the conditions outlined in the attached resolutions of the Council as attested to by Ms. Claudia Rocea, Acting Chairperson, on April 1, 2014 and August 5, 2014.



New Jersey Natural Lands Trust 2015 Annual Report

Statement of Purpose

The New Jersey Natural Lands Trust was created by the Legislature in 1968 as an independent agency with the mission to preserve land in its natural state for enjoyment by the public and to protect natural diversity through the acquisition of open space. The Trust preserves land primarily by donations of open space through acquisition of title in fee simple or of conservation easements, and manages its properties to conserve endangered species habitat, rare natural features, and significant ecosystems. The Trust invites passive use by the public for recreational or educational purposes wherever such use will not adversely affect ecological communities and biological diversity.

The Trust also recognizes that ownership and management alone are not enough to achieve its mission. Public education is an integral function of protecting natural diversity. The Trust distributes information designed to convey a conservation ethic for the protection of open space and its natural values.

New Jersey Natural Lands Trust contact information:

New Jersey Natural Lands Trust
Mail Code 501-04
P.O. Box 420
Trenton, NJ 08625-0420
Phone (609) 984-1339
Fax (609) 984-1427
Email: NatLands@dep.state.nj.us
www.njnlt.org

Cover:
Cover Photo Credit:

Index of Preserves Referenced Within the 2015 Annual Report

Atlantic County

Clarks Landing Preserve ~

Cape May County

Bennett Bogs Preserve ~

Cumberland County

Richard J. Buhlman Preserve ~

Hunterdon County

Gravel Hill Preserve ~

Sweet Hollow Preserve ~

Ocean County

Lin Lee Preserve ~

Sussex County

Sterling Hill Preserve ~

Wallkill Preserve ~

Wildcat Branch Preserve ~

Warren County

Bear Creek Preserve ~

Mt. Rascal Preserve ~

In 2015 ... the New Jersey Natural Lands Trust brought approximately 416 new acres under Trust stewardship, making the Trust responsible for over 29,000 acres managed as a system of more than 120 preserves throughout the state.

Three acquisitions created new Trust preserves--The **Bennett Bogs Preserve** in Lower Township, Cape May County, the **Sterling Hill Preserve** in Ogdensburg Borough, Sussex County, and the **Wildcat Branch Preserve** in Sparta and Hardyston townships. The remaining acquisitions were additions to the existing **Bear Creek, Clarks Landing, Gravel Hill, Lin Lee, Mt. Rascal, Richard J. Buhlman, Sweet Hollow, and Wallkill** preserves.

Botanical Legend ~ Bennett Bogs

One of the Trust's three new preserves, Bennett Bogs Preserve in Lower Township, Cape May County, was established after The Nature Conservancy (TNC) donated its lands associated with Bennett Bogs to the Trust. The Trust's Bennett Bogs Preserve is 25 acres comprised of five separate tax parcels, some contiguous and others not. TNC acquired these properties to expand and buffer a 6.5-acre property donated to New Jersey Audubon Society (NJAS) in 1950 and managed as a NJAS sanctuary.

The Bennett Bogs are not true bogs but rather a grouping of intermittent coastal plain ponds. Originally there were five ponds in this system but today, as a result of development, only three remain. The pond known as the southern pond is fully on NJAS's sanctuary, the pond known as the

woods or back pond is fully on TNC's former preserve, and the remaining pond known as the northern pond straddles both properties. Historically, the ponds were seasonally wet depending on rainfall amounts. Over the years, however, surrounding development may have altered the hydrology resulting in recently-observed lower water levels which, in turn, may be affecting vegetation in the bogs.

Bennett Bogs became known as a premier botanical site in the early 1900s when the Philadelphia Botanical Club first surveyed the ponds and discovered numerous plants typically only known from areas south of New Jersey. Over the years, more than 250 plant species have been identified at Bennett Bogs including a large number of state-endangered plant species such as cypress-swamp sedge, black-fruit spike rush, wrinkled jointgrass, rare-flower beaked-rush, coast flat sedge, Virginia thistle, snowy orchid, Barton's St. John's wort and thread-leaf beaked-rush. Other rare plant species at Bennett Bogs include hairy primrose-willow, smooth orange milkweed and aster-like boltonia. Unfortunately in recent years, Bennett Bogs has succumbed to woody vegetation such as persimmon, red maple and sweetgum, which is now pervasive in the ponds. Going back as far as 1907 the ponds had been routinely mowed, but no active management has occurred recently and no mowing has been done for more than five years. This absence of mowing, in combination with the altered hydrology, may explain the increase in woody growth and subsequent habitat changes.

For many years, TNC and NJAS co-managed their respective properties as a collective unit. The Trust hopes to work cooperatively with NJAS to restore Bennett Bogs by removing the woody vegetation and regularly mowing to thwart succession. In addition, herbicide application may be required to eradicate larger trees or patches of common reed in the ponds. A small parking area serving the preserve and sanctuary has become overgrown and will also require some maintenance such as brush removal and gravel application.

The Trust hopes that with these management efforts, rare plants will again thrive at Bennett Bogs and the bogs will be restored to their former status as a legendary Cape May botanical hotspot.

Preservation of the Unique Geology and Plant Habitat at Sterling Hill

Another of the new preserves established by the Trust in 2015, the Sterling Hill Preserve is located in Ogdensburg Borough, Sussex County. The 23-acre preserve consists of two separate areas, one 22-acre property adjacent to the Sterling Mine, and the other one-acre property located across the street which serves as parking for the preserve.

The preserve is almost entirely forested and provides habitat for state-endangered bobcat and state threatened barred owl and wood turtle. The property includes a portion of the Sterling Hill Natural Heritage Priority Site, which includes habitat and buffer for state endangered plants such as Virginia bunchflower and hemlock-parsley. The property also buffers the Sterling Mine Natural Heritage Priority Site, which includes habitat for numerous rare plants that occur there due to the unique geology surrounding Sterling Hill. Due to this unique geology, more than 350 types of minerals are known to occur at Sterling Hill and the surrounding area, which account for approximately 10 percent of the minerals known to science. Indeed, 28 of these minerals have not been found anywhere else in the world.

Many of these minerals had been mined over the years at Sterling Mine, one of the oldest mines in the United States. The earliest documented mining occurred there in 1730 when it was known as the "Copper Mine Tract." Sterling Mine was the last operating mine in New Jersey when mining operations ceased in 1986 due to a property tax dispute. When Ogdensburg Borough placed the mine for sale at public auction, two brothers, Richard and Robert Hauck, bought the property for \$750,000 and opened a museum in its place. The museum is said to offer one of the best mining tours on the east coast and is listed on the National Register of Historic Places. It highlights the history of mining, the mining process, and the consequences of resource extraction. The museum includes an exhibit hall displaying thousands of mining artifacts, a quarter-mile underground tour, and outdoor mining and discovery areas.

The Trust's preservation of the Sterling Hill Preserve ensures that habitat is protected for numerous rare plants and animals while providing a scenic buffer to the Sterling Mine and offering visitors to the area a great opportunity to take an enjoyable hike.

Just notes to add to pictures:

Zobel Exhibit Hall. At the end of the day a miner would take off his wet and muddy work clothes, hang his shirt and pants on the hangers, put his boots in the basket, and pull the chain to hoist the basket close to the ceiling because the miners wanted their clothes to dry overnight. Since warm air is less dense than cold air, the warmest air in the building was near the ceiling.

Oreck Mineral Gallery, the finest display of minerals in New Jersey, contains hundreds of fine mineral specimens in custom-designed glass display cases.

Curiosity at Wildcat Branch Preserve

After waiting quietly, the NJ Natural Lands Trust pounced on the opportunity to acquire a key 130-acre land parcel at the headwater to the Wildcat Branch. Located in a rural area of Sparta Township, Sussex County, the property still possesses a truly wild element. With forest and farm fields flanking the central flowing stream corridor and its associated emergent wetlands, the area provides secluded resting, nesting and feeding areas for waterfowl including blue-wing teal and wood duck. Through the years, periodic beaver activity has provided some open water areas too. A long lane to the former small house and farm now provides access to the preserve. For many years old box-wire fence held cattle in the pasture nearest the road. Now in the pasture, common yellow-throat warblers and cotton tail rabbits hide in shrubby hedgerows. Hikers can use a crude causeway path to cross the marsh area in order to reach a mature hardwood forest on the other side. This wooded hillside still has a series of small open fields outlined in rows of old stone walls. The old field habitat offers good nesting places for wild turkey, and the abundant acorns of the adjacent hardwood forest help make valuable year-round habitat for turkey, bear and bobcat.

The Trust also recognized the significant headwater conservation values of Wildcat Branch Preserve. The preserve acts as a catalyst to the ultimate long-term protection goals of this high quality tributary to the Wallkill River. With encouragement of the NJ Endangered and Nongame Species Program, an additional 17-acre parcel was also acquired this year by the Green Acres Program. This parcel shares a common property boundary and adds protection to sensitive limestone fen wetlands that are important documented habitat for rare plants.

Plans for a multi-home subdivision on Wildcat Branch had been drawn and readied years earlier. However, some outstanding engineering issues, including the causeway wetland crossings, delayed building activity. Also working to the favor of preservation was a slowing economy and business management setbacks. These economic realities made land preservation the best decision for all involved.

With the headwater now secured, the Trust looks downstream to possibilities for future expansion of Wildcat Branch Preserve. For now, the Trust plans to open the preserve for deer hunting. Now, neighbors and visitors, out to explore the preserve, may get a glimpse of a bear or a bobcat at Wildcat Branch.

Petty's Island Update

For years the Trust has been telling many fascinating stories about the history of Petty's Island--stories of the Lenape, Quakers, Ben Franklin, William Cramp, and, of course, Blackbeard—but the Trust wanted to conduct historical research to distinguish fact from legend. With a grant from the William Penn Foundation, the Trust awarded a contract to Hunter Research to conduct historical and archival research on Petty's Island. The result is a 538-page report that provides a wealth of information on a variety of historical themes, including the history of aboriginal people, European settlement, slavery, shipbuilding and oil and bulk materials handling.

The good news is that the historical report backs up most of the Trust's stories... with the exception of the tale of the notorious pirate Blackbeard having hidden in the coves at Petty's Island. Sadly, it looks like there's no buried treasure at Petty's Island. The report includes numerous photographs, articles and maps all of which will help to transport you back in time. We hope you will enjoy reading the report which is available on the Trust's website, Petty's Island Preserve page.

In addition to funding the historical research, the William Penn Foundation's generous \$175,000 grant will allow the Trust to pursue a number of other things at Petty's Island. The grant funding will provide for two years of educational programming, the production of recorded messages to accompany the waysides, and two video documentaries, one about the island's history, and the other the island's preservation.

In addition, the Trust used funding from an earlier William Penn Foundation grant to award a contract to Vitetta Architects to survey and evaluate existing industrial objects at Petty's Island and make recommendations as to how vestiges of Petty's Island's industrial heritage could be incorporated into the landscape of the nature preserve and future cultural and environmental education center. William Penn funding was also used to evaluate the feasibility of using Crowley Maritime's triple ramp structure as the location for the future center. After looking at the ramp, the Trust's feasibility consultant, Lammey and Giorgio, opined that the engineering reports on the structure were favorable and that it would offer "the Trust a truly unique and exciting location for the Cultural and Educational Center. There are river views on three sides; the views to the Benjamin Franklin Bridge and the Philadelphia skyline are spectacular." They also noted that the "structure will require an enclosure, delineation of spaces, stairs, elevator, heating, cooling and ventilation, electrical, and plumbing utilities.... All very easily accomplished given the footprint available."

Obviously, much of what the Trust accomplished last year was possible through William Penn Foundation funding. The Trust is extremely grateful for the financial support and interest that William Penn Foundation has given the Trust to help make the incredible resources at Petty's Island more accessible to the general public. Their funding has also allowed the Trust to consider many different options and opportunities that will enable us to hit the ground running when the Trust takes fee ownership of the island and the Petty's Island Preserve is fully open to the public.

The Petty's Island Preserve was profiled in a video report by Keystone Crossroads, a collaboration of four public media newsrooms (WHYY, WITF, WESA and WPSU) exploring the urgent challenges pressing upon urban cities and reporting in depth on the root causes of the urban crisis -- and on possible solutions. As CITGO's manager of environmental, health, safety and security Jack McCrossin noted in the report:

Unfortunately what we are dealing with today is a lot of the past practices of those operations over the last 100 years. ... The recognition of what was environmentally correct simply wasn't in the lexicon of anyone during those early days. So, the majority of what we are dealing with now is soil and groundwater contamination that quite frankly is the result of past normal operating practice from the industry that was located here beginning in the early 1900s.

...

CITGO has taken more than 1,000 soil and groundwater samples, has identified the areas of contamination and is working to remediate them.

Looking ahead to Petty's Island's bright future, the Trust's Chair Michael Catania noted:

It's going to be a long process to do the clean-up, phase out the marina operations and do the restorations to the island, but ultimately I think it's something that's well worth it. ... I think anyone who has had any role in this is going to look back on this someday when there are families out here enjoying the wildlife, thinking this is a great thing that we have done preserving Petty's Island.

A link to the seven minute video report entitled "Exploring urban islands: from natural to developed," as well as the reports referenced above, can be found on the Trust's website.

Although remediation work is ongoing, there is no reason not to come to and enjoy Petty's Island. The New Jersey Audubon Society, under its contract with the Trust, provides at least 12 programs a year at Petty's Island. Some of these programs are for Camden County school groups but many are public programs such as birding or history hikes. For information about upcoming programs, please check the NJAS program page at <http://www.njaudubon.org/Go/Petty>{hot link}

A Swamp Pink Success Story

The Trust's Richard J. Buhlman Preserve is located at the freshwater head of the tidal area along the Rattlesnake Gut, a tributary to the Cohansey River. Within the Rattlesnake Gut stream corridor are hundreds of swamp pink plants, both clumps and individual rosettes. Since swamp pink is often

found growing on hummocks formed by trees, shrubs and sphagnum mosses, it is thought that topographic conditions may provide an important component of swamp pink habitat. The Rattlesnake Gut has surprisingly steep slopes in areas and varying topographic conditions which provide excellent habitat for swamp pink.

Swamp pink is a state endangered plant and was listed as a federally threatened species in 1988. Supporting over half of the known populations, New Jersey is the world's stronghold for swamp pink, and protection of its known habitat is critical. The primary threats to swamp pink are the indirect effects of off-site activities and development such as pollution, introduction of invasive species, and subtle changes in groundwater and surface water hydrology. Hydrologic changes include increased sedimentation from off-site construction, groundwater withdrawals or diversion of surface water, reduced infiltration (recharge) of groundwater, increases in erosion, increases in the frequency, duration and volume of flooding caused by direct discharges to wetlands (such as stormwater outfalls), and increased runoff from upstream development. Based on its vulnerability to off-site threats, protection of swamp pink necessitates not just protection of the plants but also a significant buffer that may extend as far as a half-mile beyond the plants.

With a new acquisition this year, more swamp pink habitat was preserved at the Richard J. Buhlman Preserve. The preserve now consists of over 100 acres of forest and a complex of swampy forested wetlands bordering meandering streamlets, headwater wetlands, sphagnum wetlands with scattered Atlantic white-cedars, and spring seepage areas.

The Trust is hoping that next year will bring additional lands to the Richard J. Buhlman Preserve and additional protection to swamp pink.

Biodiversity Inventory Updates Biodiversity Inventories and “Surgical Surveys”

What's in reserve? What inventory is on the storekeeper's shelf, or left in the homesteader's pantry? What do you take stock of? These questions assess what we know now so we can plan for the future. Ecologists or land managers need to know what each preserve has in its natural resource inventory. To answer that question, the Trust has started efforts to inventory the plant and animal resources of our preserves.

Over the last four years, the Trust has contracted with experts to thoroughly inventory some of our most unique preserves in search of all species of plants, reptiles and amphibians, birds and butterflies too. In years past, the Trust has selected one preserve which to conduct a complete biological inventory. In 2015 the Trust stepped up its survey pace. Two complete biodiversity inventories and four smaller targeted surveys we like to call “surgical surveys” were put out for work bids. The 1,021-acre Bear Swamp at Red Lion Preserve in Burlington County, and the 2,164-acre Hamilton Preserve in Atlantic County, were both chosen for complete biodiversity inventories. These are two of the more prominent preserves where the Trust had high hopes for new discoveries.

Centrally located in Burlington County, Bear Swamp at Red Lion Preserve is not far from the Red Lion circle. This wet property with its woolly namesake seemed ripe for an inventory to reveal its

unknown natural richness. The Trust selected BioStar Associates for this inventory. BioStar had done similar work at other Trust preserves and was familiar with what the job entailed. The preserve's location spans two geographic regions, the inner and outer coastal plains, which suggested a high potential for interesting plants. The field work to search for plants, reptiles and amphibians spanned spring, summer and fall. After inspecting the furthest corners of the swamp much new was revealed. Most notable was a population of a federally endangered lily called swamp pink, previously undocumented from this swamp. Also heard calling from the depths of the swamp was the threatened Pine Barrens treefrog. Already well known to bird watchers, Bear Swamp at Red Lion Preserve is categorized by the NJ Audubon Society as an "Important Birding Area." So labeled, many skilled bird watchers regularly visit the Preserve and add their sighting information to birding data records for all to share.

The Hamilton Preserve biodiversity inventory was also initiated in 2015. Located near Mays Landing, Atlantic County, this preserve is a known hotspot for many rare plants and herptiles. However, damage from illegal off-road vehicle use has impacted many of the preserve's sensitive wetlands and critical habitats for many species. Herpetological Associates Inc. was retained for the species inventory and assessment of damages to plants and animals from illegal off-road vehicle use. Much of the field work was completed in 2015 and the final report is expected in early 2016.

The Trust also initiated in 2015 "surgical surveys," where searches focus on a single species or specific habitat. When possible, the Trust hired young naturalists or researchers to do these smaller projects, offering them opportunities for solid field work experience. As its first "surgical survey" the Trust studied the utilization of hay fields by grassland birds at the Thomas F. Breden Preserve at Milford Bluffs and Gravel Hill Preserve, both in Hunterdon County. Success was had in locating Pine Barrens treefrogs at our Mankiller and Bears Head preserves, both in Atlantic County. One biologist waded into Sussex County rivers at Congelton Preserve and Papakating Creek Preserve to search for freshwater mussels.

The question of what to take stock of is never-ending. There is always more we hope to learn about our preserves. Next year we will set to work on more surveys and inventories as we take stock of what's on our preserves.

Hunting Update

During the 2015-2016 hunting season over 3,920 hunters registered at Trust preserves through its website: www.njnlt.org. The Trust allows deer hunting only at many of its preserves to maintain biodiversity. The deer population in New Jersey is far greater than the ecosystem can sustain. Over-browsing by deer depletes native vegetation resulting in impacts to animal and plant habitat, such as decreased food sources and increased invasive plants.

In order to hunt at selected Trust preserves, hunters access the Trust's website, electronically submit information to the Trust, and print their own hunter registration letter with the required accompanying preserve map. The Trust is able to use this information to sort hunter registrations by preserve. Trust staff may reach out to hunters registered at a specific preserve to determine their interest in volunteering for clean-ups and maintenance projects. The Trust continues to use

a “lottery” system for the ever-popular but limited hunting opportunities at our Limestone Ridge Preserve and Thomas F. Breden Preserve at Milford Bluffs.

It is important to note that the Trust does not allow hunting for waterfowl, small game, turkey or bear, as it maintains that only over-browsing by deer poses a threat to biodiversity. In addition, Sunday bow hunting is not authorized on Trust preserves as it is on state wildlife management areas and private property during deer season.

While hunting on Trust preserves, all rules and regulations in the New Jersey Division of Fish and Wildlife game code must be followed. Hunting deer by bow and arrow, shotgun or muzzleloader are acceptable, depending on the preserve. No target shooting or discharge of weapons other than for deer hunting purposes is permitted. Permanent deer stands are not allowed, and portable deer stands, while permitted, must be removed after the hunting season is completed or are subject to confiscation by the Trust.

Thanks to Our Volunteers

The Trust would like to acknowledge and thank its many volunteers for their invaluable contributions to the maintenance of Trust preserves. If you are interested in becoming a Trust volunteer monitor or attending a workday, please contact the New Jersey Natural Lands Trust at 609-984-1339, or email NatLands@dep.state.nj.us.

Donations

The New Jersey Natural Lands Trust gratefully extends its thanks to the following who have donated land, funds or services to the Trust in 2015 to help preserve and protect New Jersey’s natural diversity:

**CITGO Petroleum Corporation
Conserve Wildlife Foundation
Covanta Camden Energy Recovery
Center**

**DEP Endangered and Nongame Species
Program
Duke Farms
Herpetological Associates, Inc.
William Penn Foundation**

For more information about how you can make a donation to further the Trust’s mission to acquire, preserve and manage natural lands for the protection of natural diversity, please call 609-984-1339.

The New Jersey Natural Lands Trust financial report is available upon request.

Stefan Martin Prints for Sale to Benefit the Trust

In 1984, the Trust commissioned a series of limited edition prints created exclusively for the Trust by New Jersey wood engraver Stefan Martin. Each of the three prints highlights an object of the Trust's preservation efforts: the State-endangered Peregrine Falcon, titled "Peregrine Falcon;" a northern New Jersey stream habitat titled, "Morning Stream;" and a grouping of three Pine Barrens Gentian, titled "Gentian." After Stefan Martin's death in a 1994 fishing accident, a fellow artist noted that Martin was "absolutely one of the most important artists in New Jersey. He won many awards, was nationally known, and very well-loved."

Unframed prints are \$150 each, or \$400 for all three (a \$50 savings). Remaining as of this writing are 202 "Peregrine Falcon," 125 "Morning Stream," and 17 "Gentian" prints.

To order, contact the Trust at 609-984-1339, or email NatLands@dep.state.nj.us and indicate which print or prints you would like to order and your name and phone number. We will get back to you with ordering details.

The New Jersey
NATURAL LANDS TRUST

Board of Trustees

An 11-member Board of Trustees sets policy for the Trust.
Six members are appointed by the Governor from the recommendations
of a nominating caucus of conservation organizations, and five members are State officials.

Michael Catania (Chairperson), Executive Director, Duke Farms

James Hall (Vice Chairperson), Executive Director, Palisades Interstate Park Commission

Theresa Lettman (Secretary/Treasurer), Pinelands Preservation Alliance

Richard Boornazian, Assistant Commissioner, Natural and Historic Resources, New Jersey
Department of Environmental Protection

Emile DeVito, Director of Conservation Biology, New Jersey Conservation Foundation

Steve Eisenhauer, Natural Lands Trust, Inc.

Thomas Gilmore, President Emeritus, New Jersey Audubon Society

Matt Spayth, Office of Management & Budget, New Jersey Department of Treasury

Larry Torok, Division of Land Use Regulation, New Jersey Department of Environmental
Protection

Judeth Yeany, Green Acres Program, New Jersey Department of Environmental Protection

Vacant – State House Commission Member

Staff

Robert J. Cartica, Executive Director

Cari Wild, Real Estate Coordinator

Martin Rapp, Ecologist

Ryan Benson, Counsel

Darin Oliver, Administrative Support