

# **NJDEP RADON TRAINING WORKSHOP**

**Sponsored by the NJDEP Radon Section**

**Funded through the EPA State Indoor Radon Grant**

**Presented by ERRTC at Rutgers University**

**Anita Kopera**

**609-984-5543**

**[anita.kopera@dep.state.nj.us](mailto:anita.kopera@dep.state.nj.us)**

# WHO'S WHO?

- Patricia Gardner
- Linda Jordan
- Maxine Williams
- Herbert Roy
- Shantha Shashidhara
- Charles Renaud



# WHAT'S NEW FOR RADON CERTIFICATION?

- ▶ All renewal applications are pre-printed
- ▶ Turnaround time for review of individual application: 2-14 days
- ▶ Turnaround time for review of business application: 1-3 weeks
- ▶ New QA/QC Plan guidance and checklist
- ▶ Full business application required after July 1, 2013
- ▶ Revised Child Care Center guidance
- ▶ Assessment of NJ exams and national exams
- ▶ Continuing review of NJ training courses (currently mitigation)

# NEW RADON PROJECTS

## Habitat for Humanity-Low Income Mitigation Pilot Project

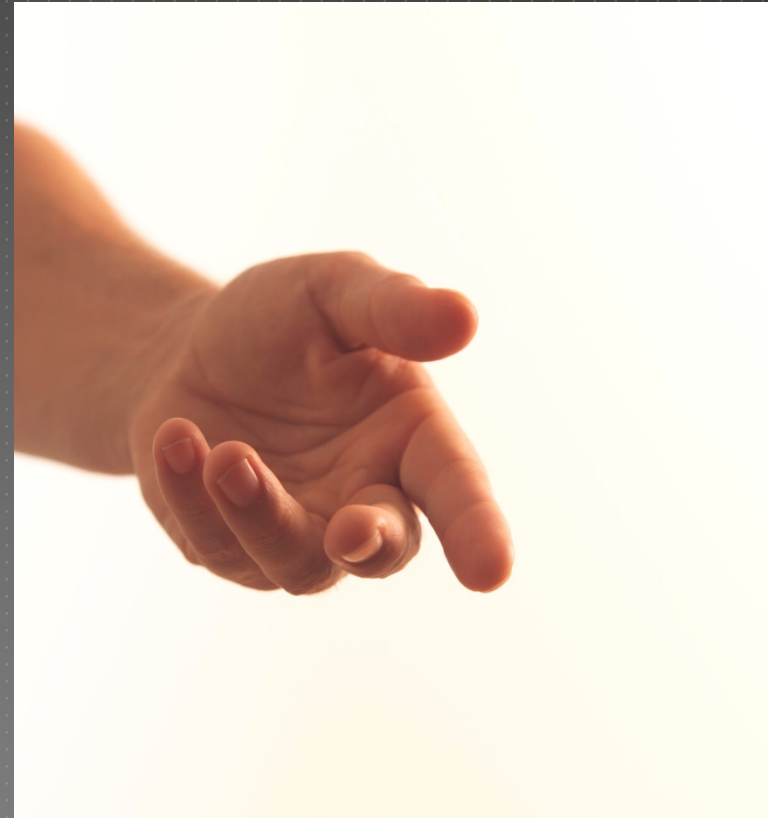
- ▶ Partnering with Raritan Valley Habitat for Humanity
- ▶ Offering free test kits to Habitat homeowners
- ▶ Mitigators will donate their time and receive CEU's
- ▶ All equipment purchased with SIRG funds

## RRNC Training for Municipal Code Enforcement Officials

- ▶ Contract with ERRTC to develop three five-hour workshops (north, central, and south)

# CONTINUING TO REACH OUT AND EDUCATE

- Radon Action Month – 100 activities in NJ
- Radon Poster Contest
- Radon Awareness Program
- Elevated Radon Awareness Program
- Newborn Pilot Program
- Radon Action Partnership Awards
- New Construction Info Card



# ASSISTANCE TO HOMEOWNERS

- ▶ Post Mitigation Testing Program
- ▶ Confirmatory Testing Program
- ▶ Complaint Investigations
- ▶ Routine Mitigation System Inspections
- ▶ Radon Information Line
- ▶ Radon Information Packets

# What impact do we have?

July 1, 2011 through June 30, 2012

- 50,400 tests - all building types
- 3,200 mitigations – all building types
- 1,600 calls to the information line

## Healthy 2010 - NJDHSS

- There was steady improvement in the percentage of New Jersey homes ever tested for radon from 1996 (9.7%) to 2010 (25.4%)
- In 2010, 43.6% of homes that tested equal to or greater than 4 pCi/L had been mitigated, which exceeds the Healthy New Jersey 2010 target value of 40%.





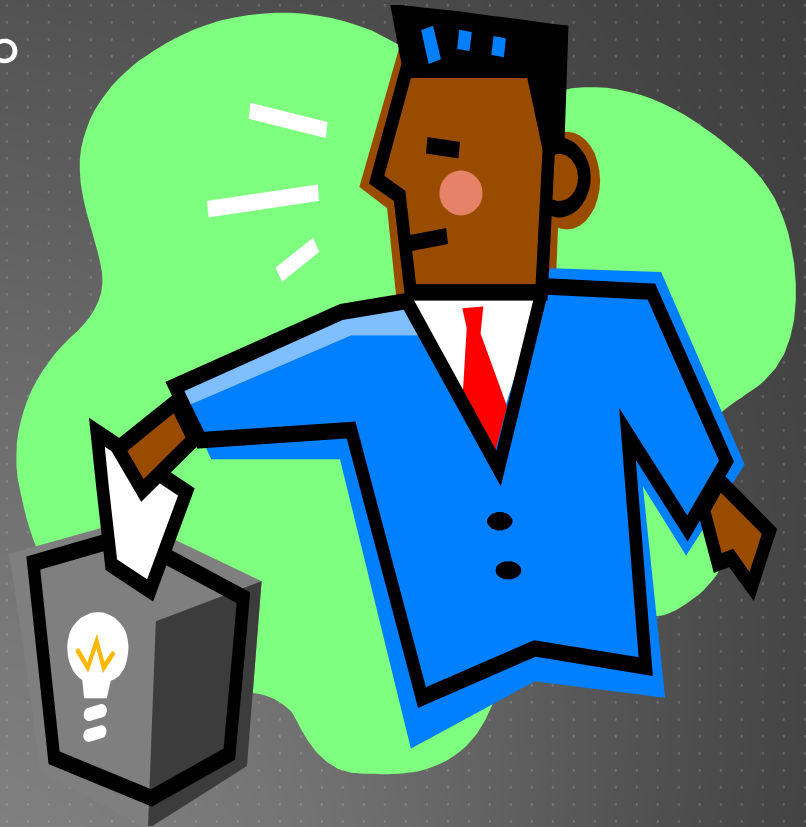
# SUGGESTIONS WELCOME!

We strive to keep up with current needs and to continue to improve:

- Services
- Processes
- Communication
- Documentation

We appreciate YOUR input, feedback and suggestions:

- Call me – 609-984-5543
- E-mail – [anita.kopera@dep.state.nj.us](mailto:anita.kopera@dep.state.nj.us)





# TODAY'S TRAINING: QUESTIONS

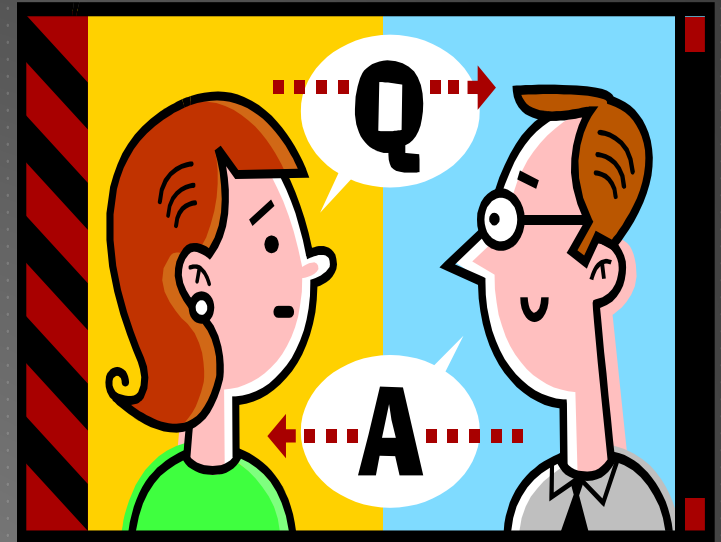
The training courses are designed to provide specific instruction and the instructors have a lot of material to cover. They will only have time to answer questions that relate to the information they are teaching.

If a question or comment does not deal with the specific discussion that is taking place in the session, you may bring it to our attention in the following ways:

- ▶ Fill out the sheet for questions and comments that was provided with your course material and hand it to a Radon Section member any time during the day
- ▶ Ask your question during the session, and if it is not relevant to the discussion at hand it will be placed in a “parking lot” on the flip chart

# TODAY'S TRAINING: ANSWERS

- **MORNING and AFTERNOON SESSIONS:** a response document will be prepared to address relevant questions and will be
  - E-mailed to all attendees
  - Posted at [ngradon.org](http://ngradon.org)
- **AFTERNOON SESSIONS:** if questions or comments warrant some discussion among specialists, the issue will be e-mailed to all MIS or MES attendees for discussion



**Anita Kopera**

**NJDEP Radon Section**

**609-984-5543**

**[anita.kopera@dep.state.nj.us](mailto:anita.kopera@dep.state.nj.us)**

# Radon Section's former "ride"



**ENJOY THE WORKSHOP!**