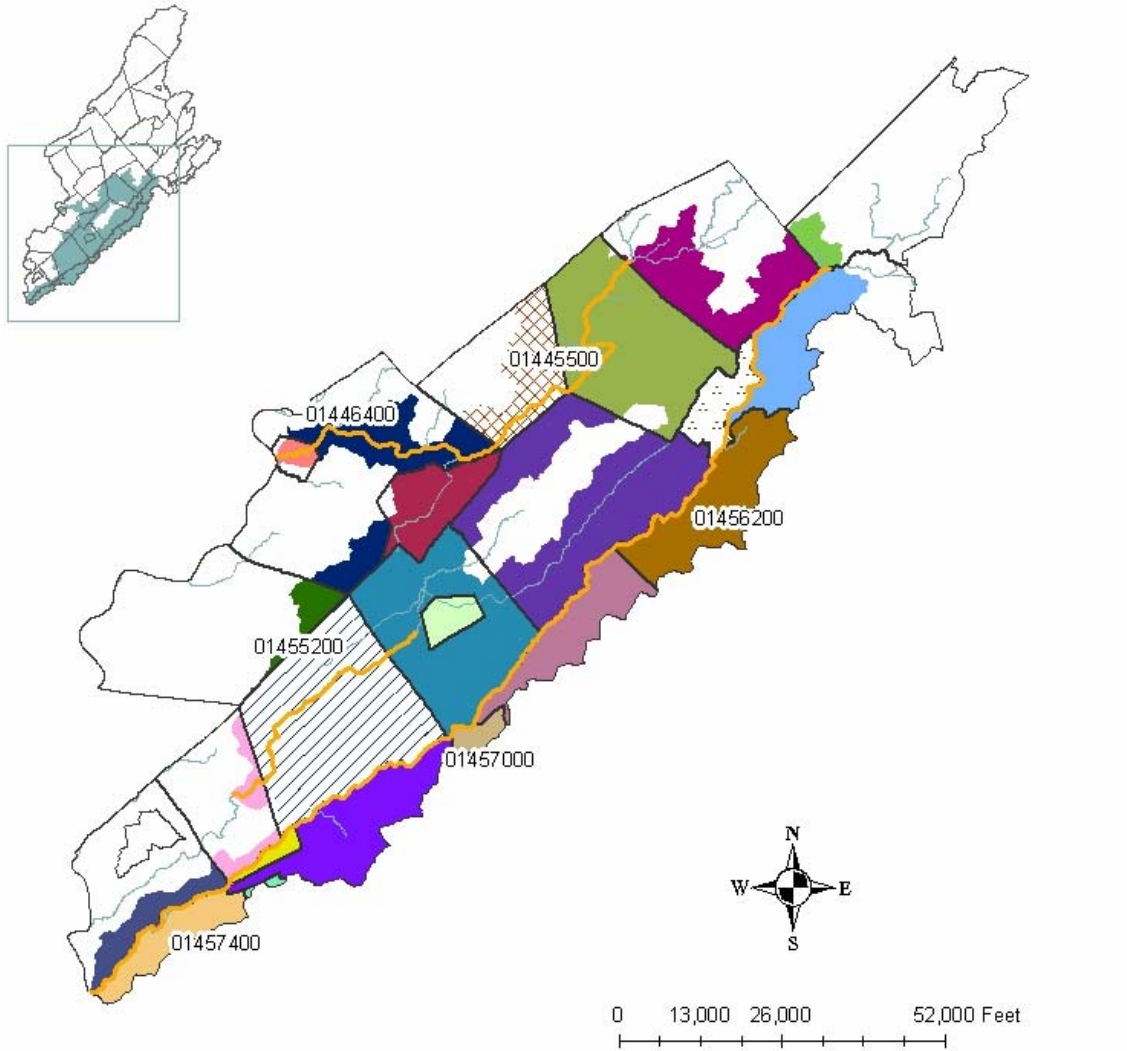


Appendix B

Maps of OWTS Impaired Segments by WMA

The following pages present one map for each Watershed Management Area containing stream segments with established fecal coliform TMDLs which identify onsite wastewater treatment systems as potential pollutant sources. The maps depict the sections of municipalities which drain to these segments, as listed in Appendix A.

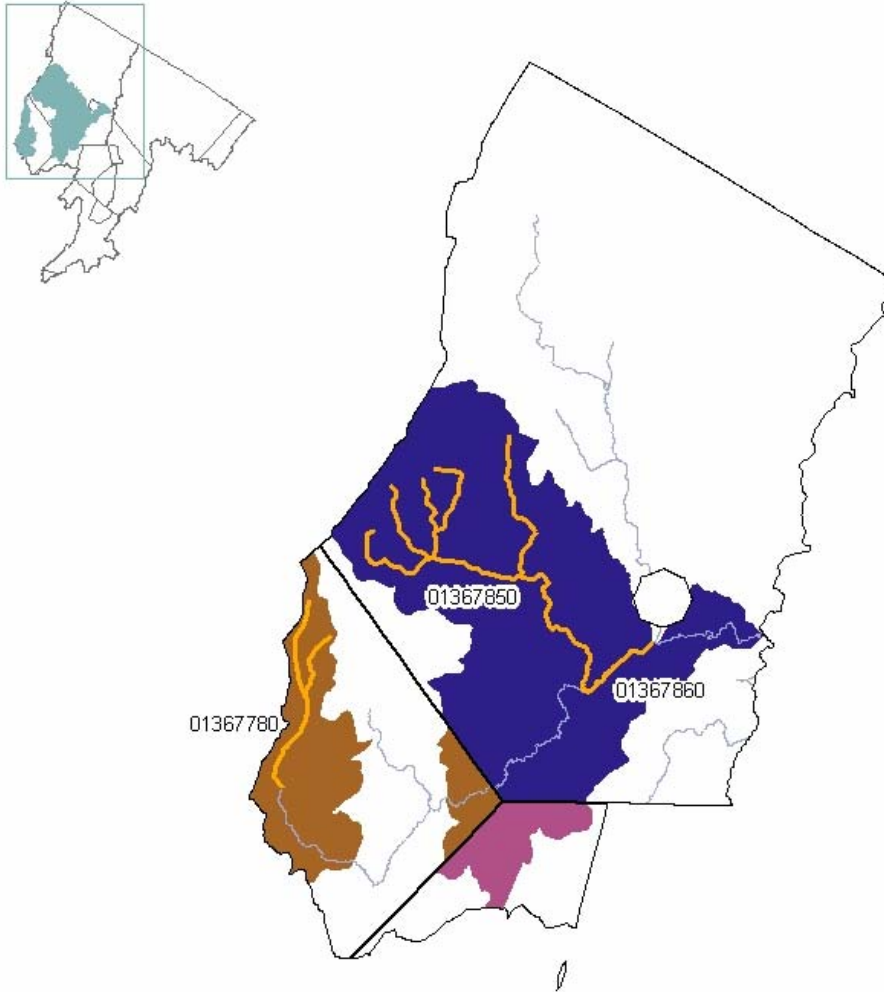
Watershed Management Area 1



Legend

OWTS Impaired Segment	Sections of Municipalities within Affected HUC 14 Watersheds	GREENWICHTWP	MANSFIELD TWP
Major Streams	ALEXANDRIA TWP	HACKETTSTOWN TOWN	MOUNT OLIVETWP
Municipal Boundaries	ALLAMUCHY TWP	HAMPTON BORO	OXFORD TWP
	BELMADERETOWN	HARMONY TWP	POHATCONG TWP
	BETHLEHEMTWP	HOLLAND TWP	WASHINGTON BORO
	BLOOMSBURY BORO	INDEPENDENCE TWP	WASHINGTON TWP; MORRIS CO
	BYRAM TWP	LEBANON TWP	WASHINGTON TWP; WARREN CO
	FRANKLINTWP	LIBERTY TWP	WHITETWP

Watershed Management Area 2

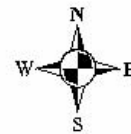


Legend

- OWTS Impaired Segment
- Major Streams
- ▭ Municipal Boundaries

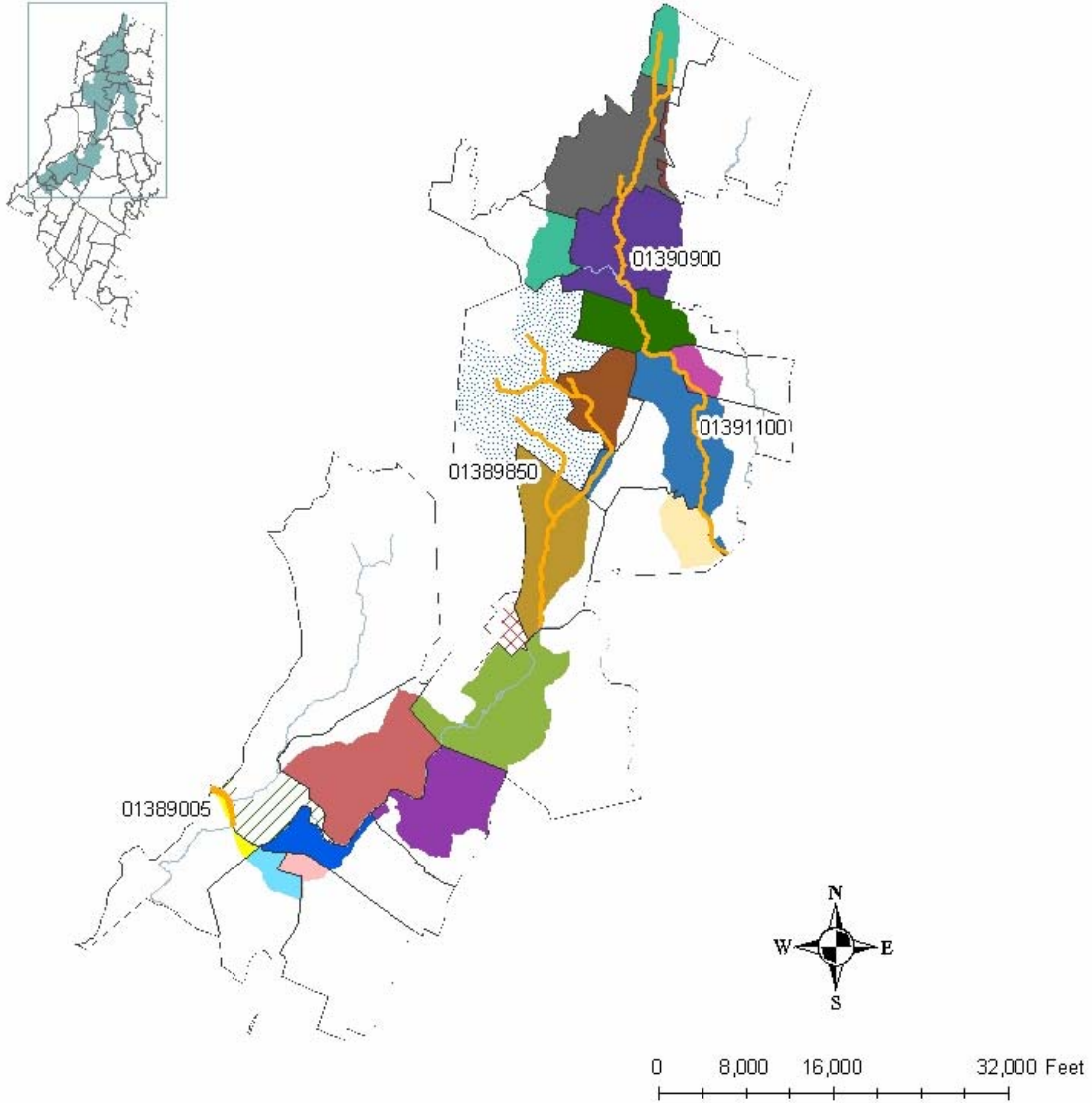
Sections of Municipalities within Affected HUC14 Watersheds

- FRANKFORD TWP
- LAFAYETTE TWP
- WANTAGE TWP



0 7,500 15,000 30,000 Feet

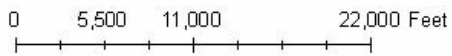
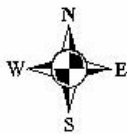
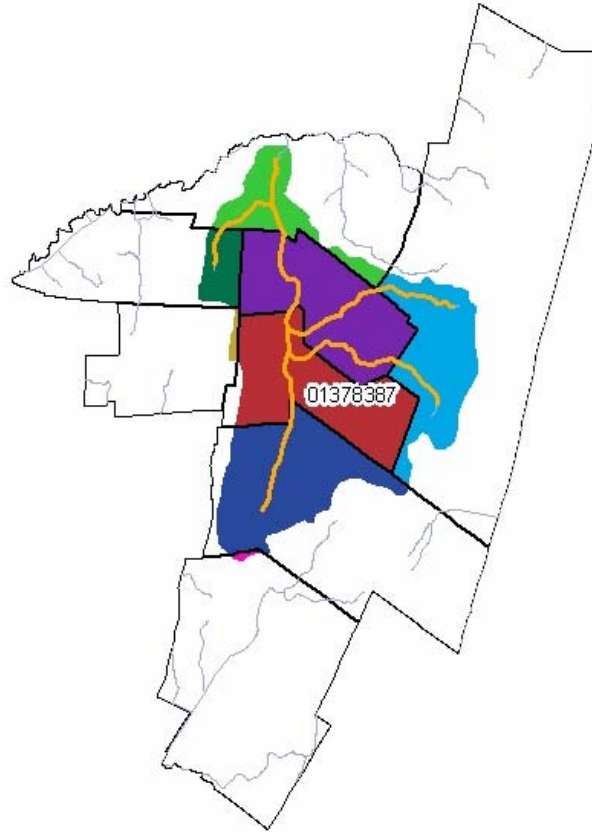
Watershed Management Area 4



Legend

CWTS Impaired Segment	Sections of Municipalities within Affected HUC14 Watersheds	LITTLE FALLS TWP	RIDGEWOOD VILLAGE
Major Streams	ALLENDALE BORO	MAHWAH TWP	TOTOWA BORO
Municipal Boundaries	CEDAR GROVE TWP	MIDLAND PARK BORO	UPPER SADDLE RIVER BORO
	FAIRFIELD TWP	NORTH CALDWELL BORO	WALDWICK BORO
	GLEN ROCK BORO	PATERSON CITY	WAYNE TWP
	HAWTHORNE BORO	PROSPECT PARK BORO	WEST PATERSON BORO
	HO-HO-KUS BORO	RAMSEY BORO	WYCKOFF TWP

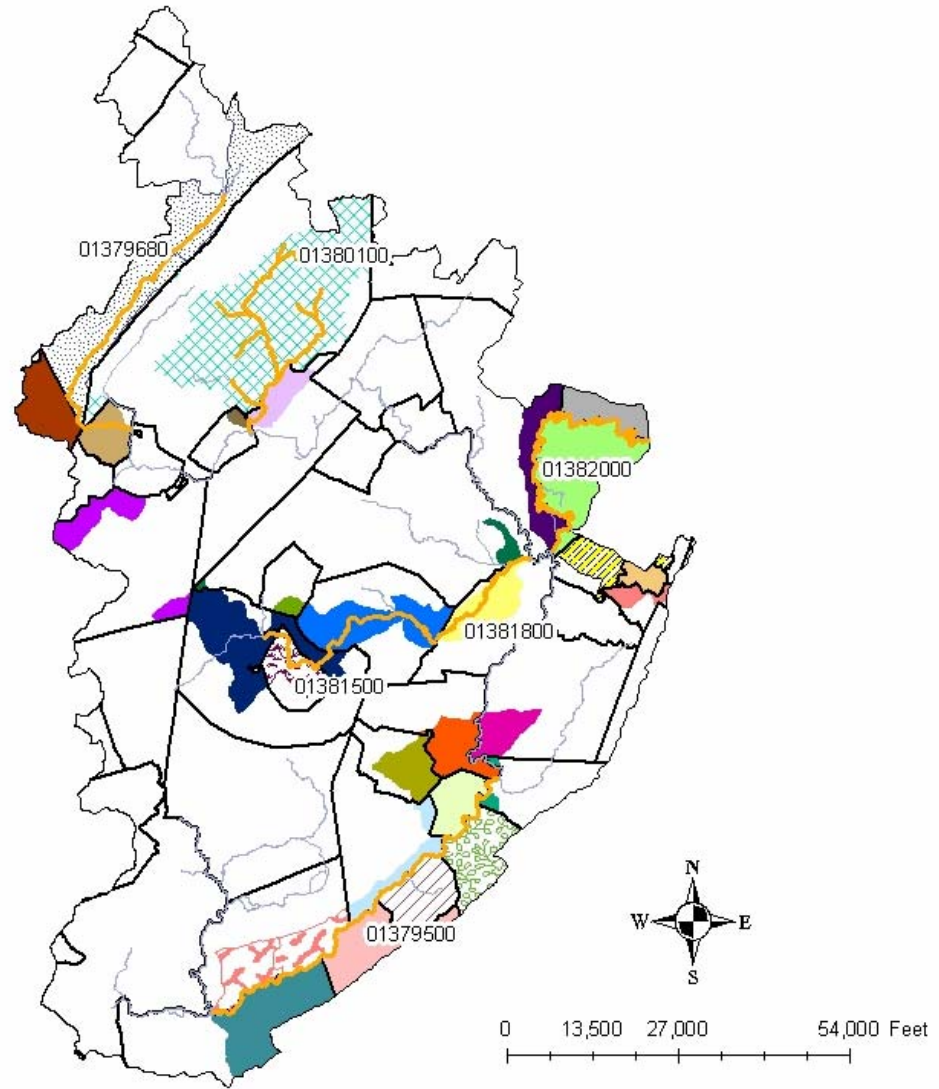
Watershed Management Area 5



Legend

- | | | |
|-----------------------|--|----------------|
| OWTS Impaired Segment | Sections of Municipalities within Affected HUC14 Watersheds | DUMONT BORO |
| Major Streams | ALPINE BORO | ENGLEWOOD CITY |
| | CLOSTER BORO | HAWORTH BORO |
| | CRESSKILL BORO | TENAFLY BORO |
| | DEMAREST BORO | |

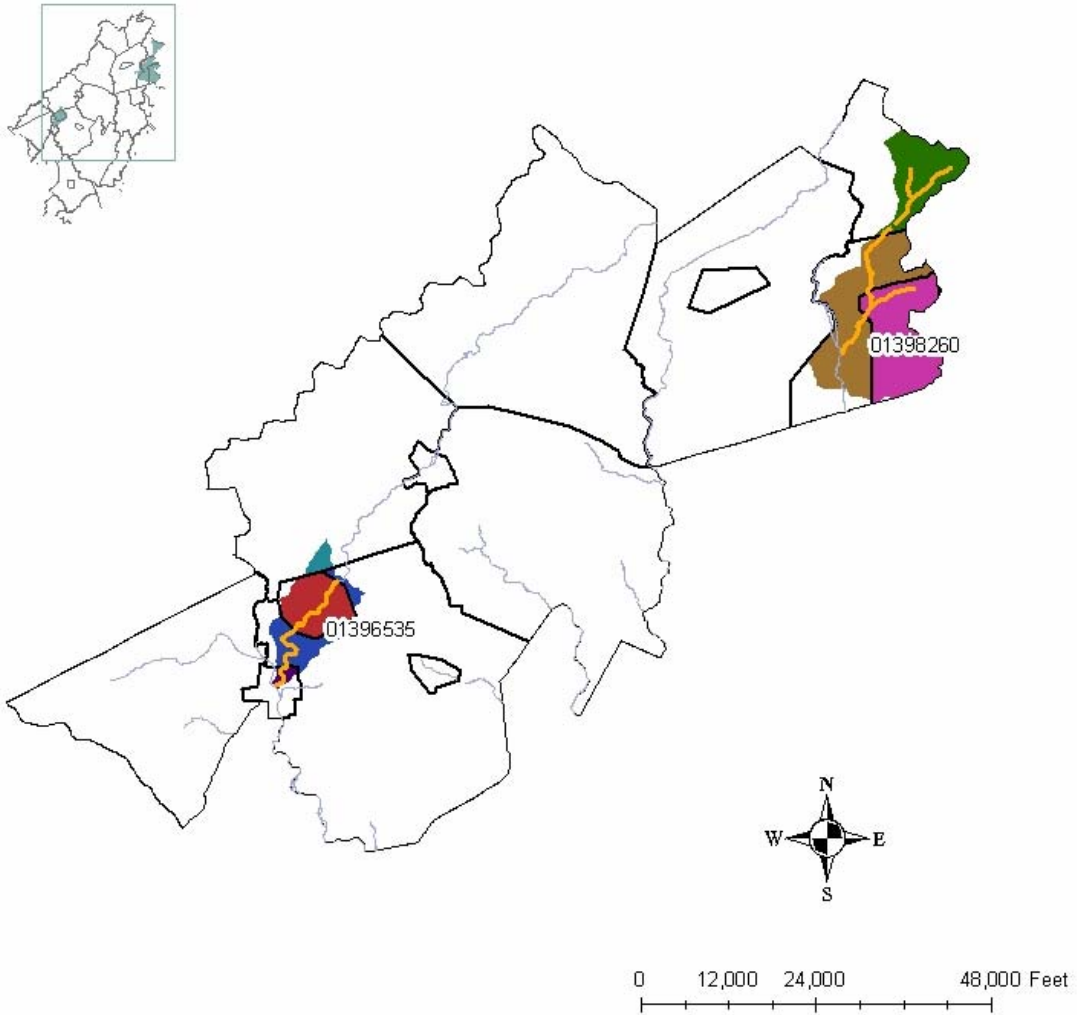
Watershed Management Area 6



Legend

- | | | | | |
|---|--|---|--|---|
| <ul style="list-style-type: none"> OWTS Impaired Segment Sections of Municipalities within Affected HUC14 Watersheds Major Streams Municipal Boundaries | <ul style="list-style-type: none"> BERKELEY HEIGHTS TWP CALDWELL BORO CHATHAM BORO CHATHAM TWP DENVILLE TWP EAST HANOVER TWP ESSEX FIELDS BORO FAIRFIELD TWP FLORHAM PARK BORO | <ul style="list-style-type: none"> HANOVER TWP JEFFERSON TWP LINCOLN PARK BORO LIVINGSTON TWP LONG HILL TWP MADISON BORO MILLBURN TWP MONTVILLE TWP MORRIS PLAINS BORO MORRIS TWP | <ul style="list-style-type: none"> MORRISTOWN TOWNSHIP NEW PROVIDENCE BORO PARSIPPANY-TROY HILLS TWP RANDOLPH TWP ROCKAWAY BORO ROCKAWAY TWP ROCKBURY TWP SUMMIT CITY WARREN TWP WEST CALDWELL TWP | <ul style="list-style-type: none"> WHARTON BORO |
|---|--|---|--|---|

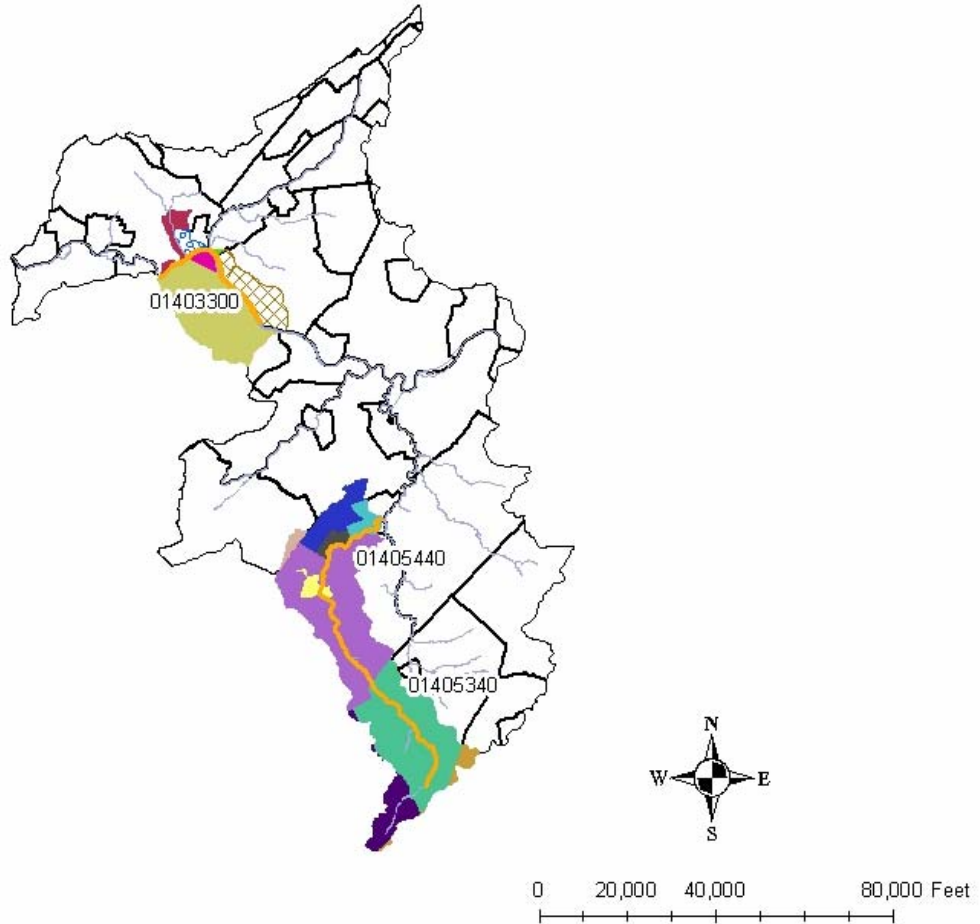
Watershed Management Area 8



Legend

- | | |
|-----------------------|---|
| OWTs Impaired Segment | Sections of Municipalities within Affected HUC 14 Watersheds |
| Major Streams | CLINTON TOWN |
| Municipal Boundaries | CLINTON TWP |
| | HIGH BRIDGE BORO |
| | LEBANON TWP |
| | MENDHAM BORO |
| | MENDHAM TWP |
| | RANDOLPH TWP |

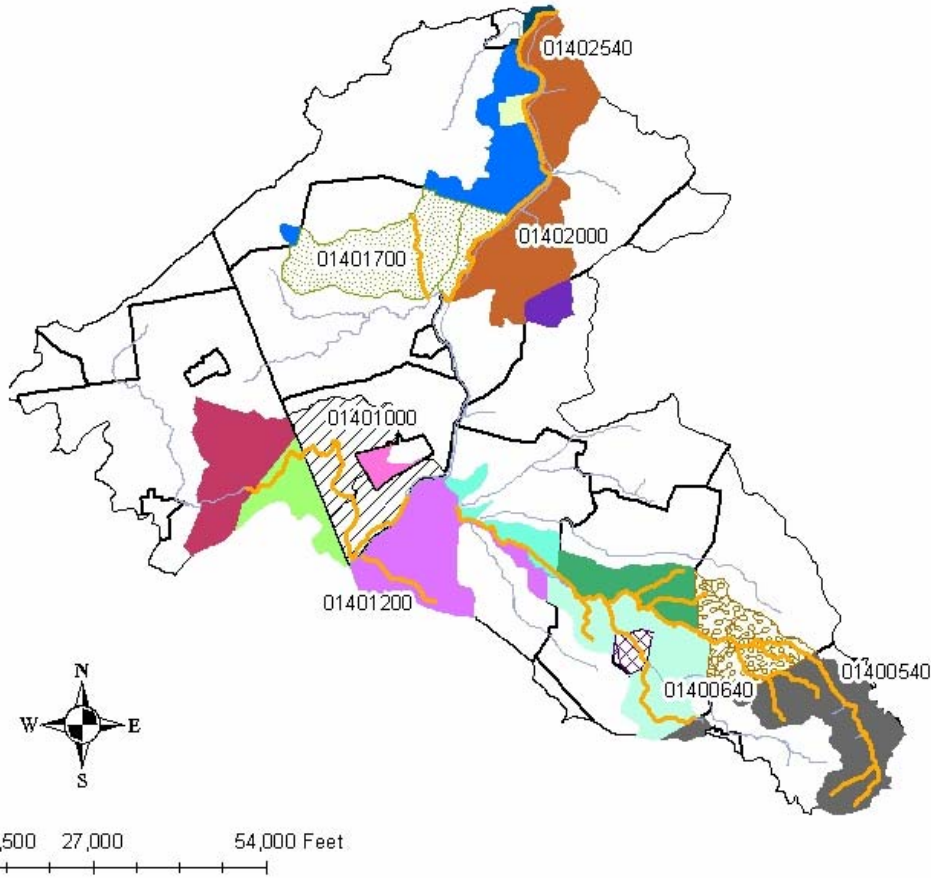
Watershed Management Area 9



Legend

DWTS Impaired Segment	Sections of Municipalities within Affected HUC 14 Watersheds	MILLSTONE TWP
Major Streams	BOUND BROOK BORO	MONROE TWP
Municipal Boundaries	BRIDGEWATER TWP	PISCATAWAY TWP
	EAST BRUNSWICK TWP	SOUTH BOUND BROOK BORO
	FRANKLIN TWP	SOUTH BRUNSWICK TWP
	FREEHOLD TWP	SPOTSWOOD BORO
	HELMETTA BORO	
	JAMESBURG BORO	
	MANALAPAN TWP	
	MIDDLESEX BORO	

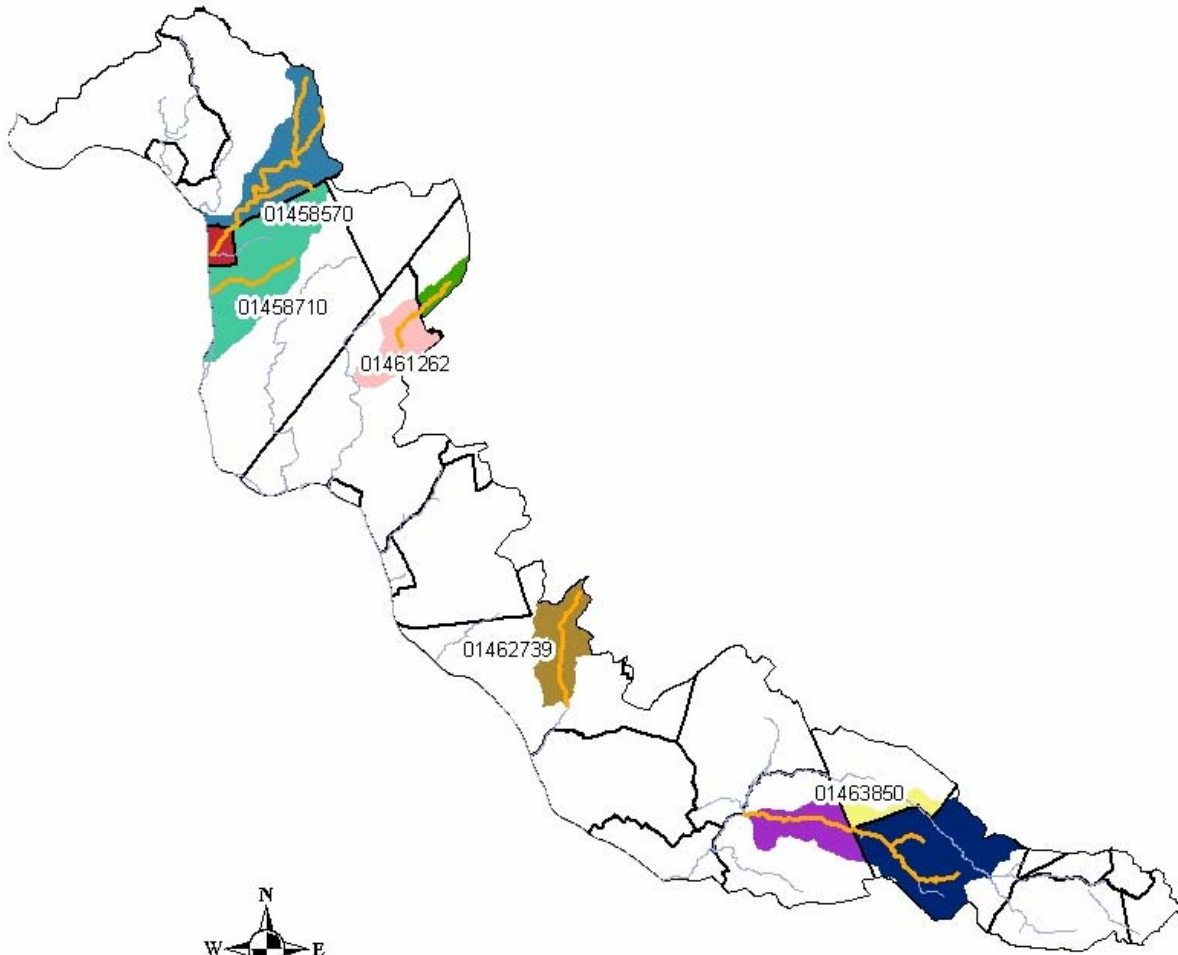
Watershed Management Area 10



Legend

OWTS Impaired Segment	Sections of Municipalities within Affected HUC 14 Watersheds	MONTGOMERY TWP
Major Streams	CRANBURY TWP	PLAINSBORO TWP
Municipal Boundaries	EAST WINDSOR TWP	PRINCETON BORO
	FRANKLIN TWP	PRINCETON TWP
	HIGHTSTOWN BORO	SOUTH BRUNSWICK TWP
	HILLSBOROUGH TWP	WEST WINDSOR TWP
	HOPEWELL TWP	
	LAWRENCE TWP	
	MANVILLE BORO	
	MILLSTONE BORO	
	MILLSTONE TWP	
	MONROE TWP	

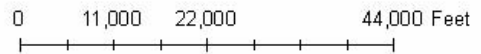
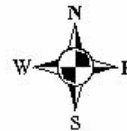
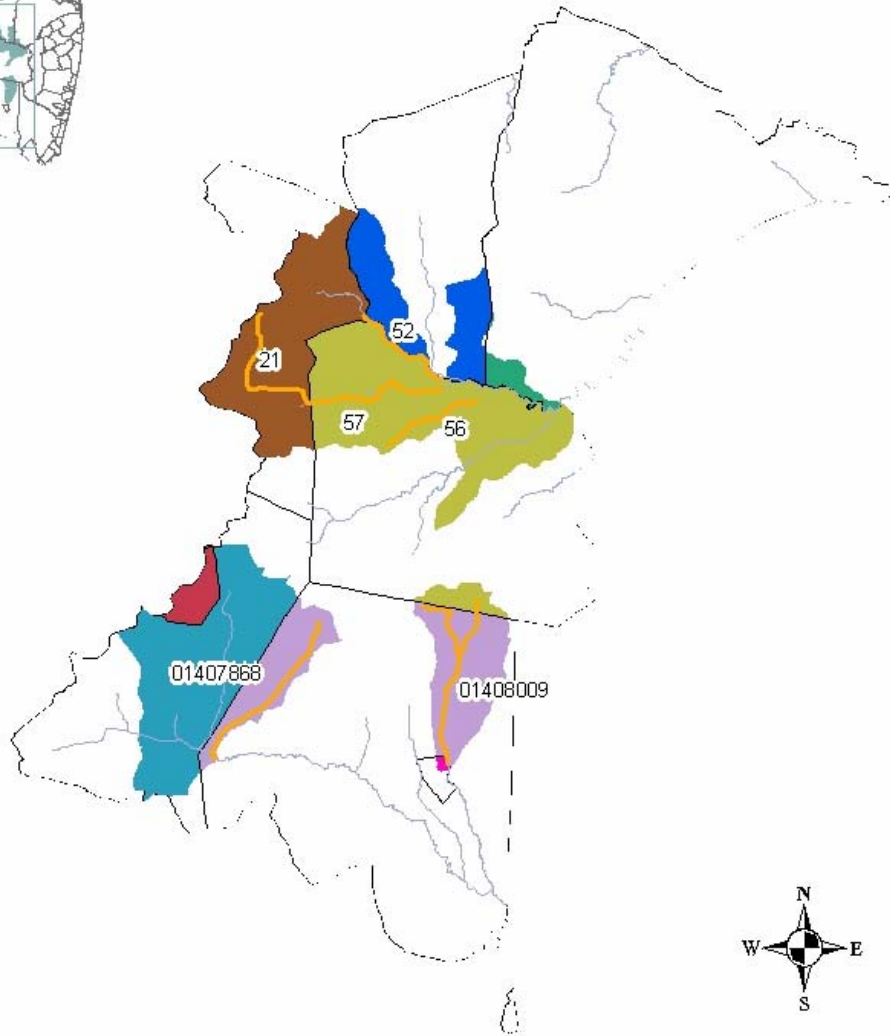
Watershed Management Area 11



Legend

- | | | |
|-----------------------|---|------------------|
| OWTS Impaired Segment | Sections of Municipalities within Affected HUC 14 Watersheds | KINGWOOD TWP |
| Major Streams | ALEXANDRIA TWP | RARITAN TWP |
| Municipal Boundaries | DELAWARE TWP | WASHINGTON TWP |
| | FRENCHTOWN BORO | WEST WINDSOR TWP |
| | HAMILTON TWP | |
| | HOPEWELL TWP | |

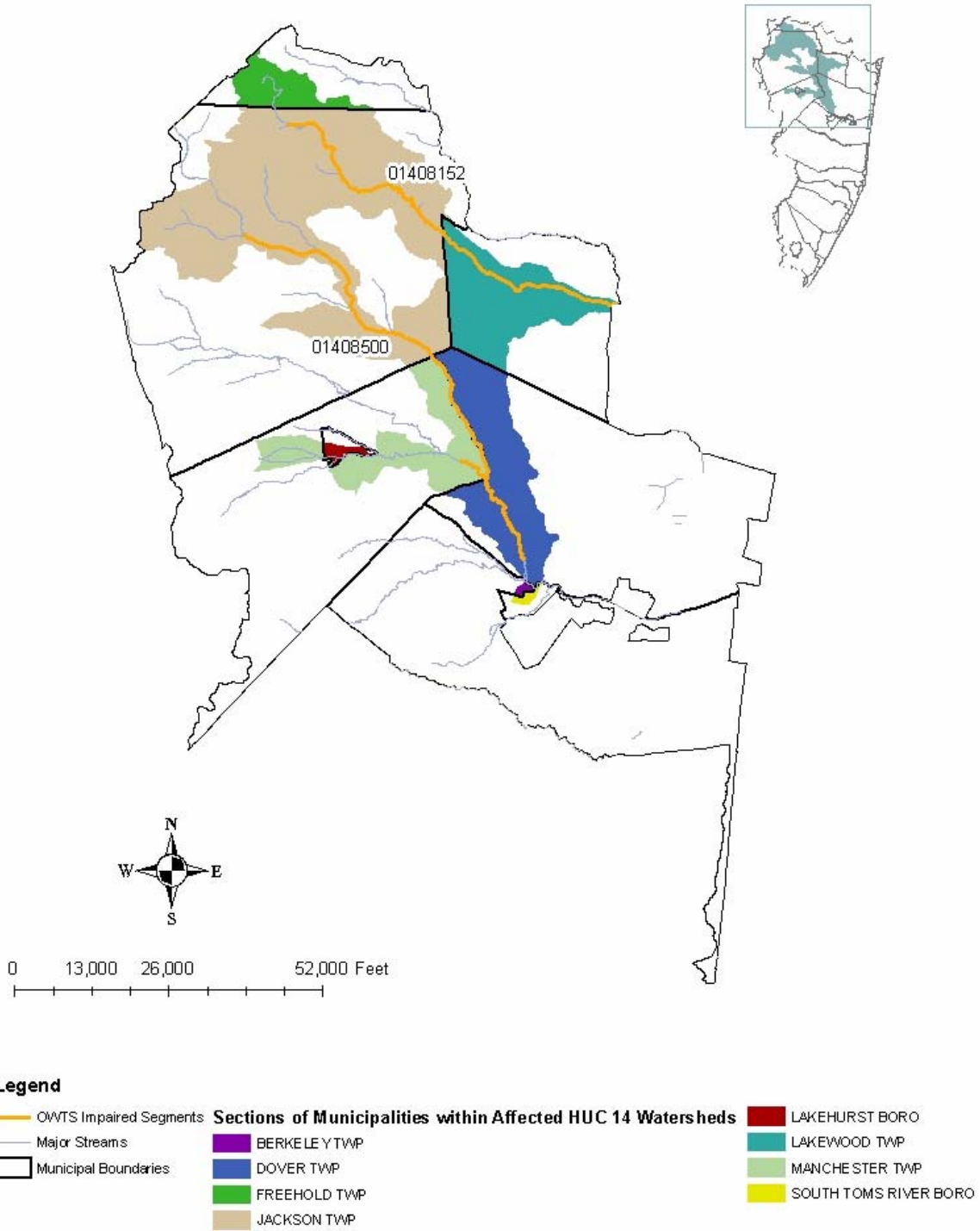
Watershed Management Area 12



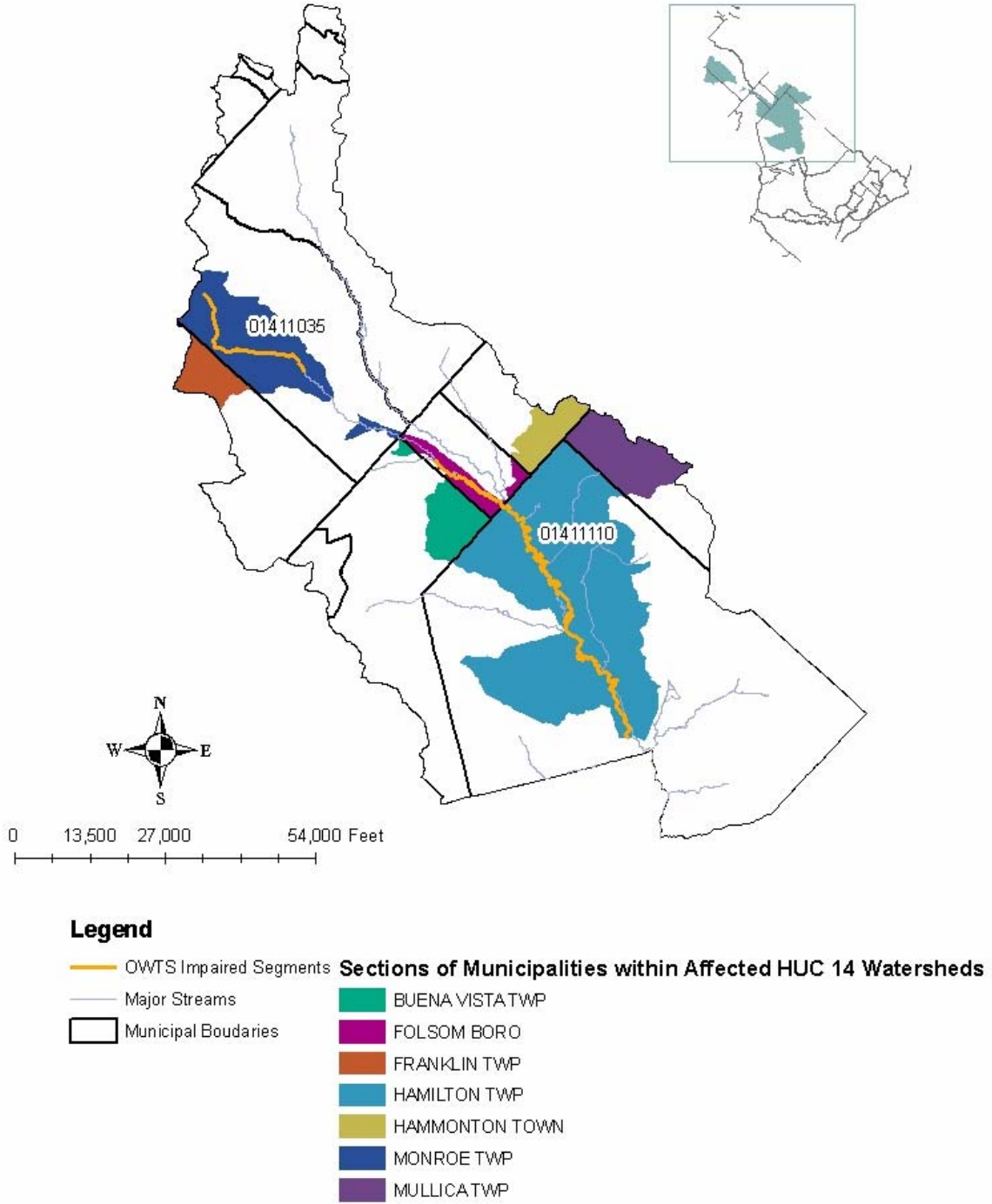
Legend

OWTS Impaired Segments	Sections of Municipalities within Affected HUC 14 Watersheds	HOLMDEL TWP
Major Streams	COLTS NECK TWP	HOWELL TWP
Municipal Boundaries	FARMINGDALE BORO	MARLBORO TWP
	FREEHOLD BORO	MIDDLETOWN TWP
	FREEHOLD TWP	

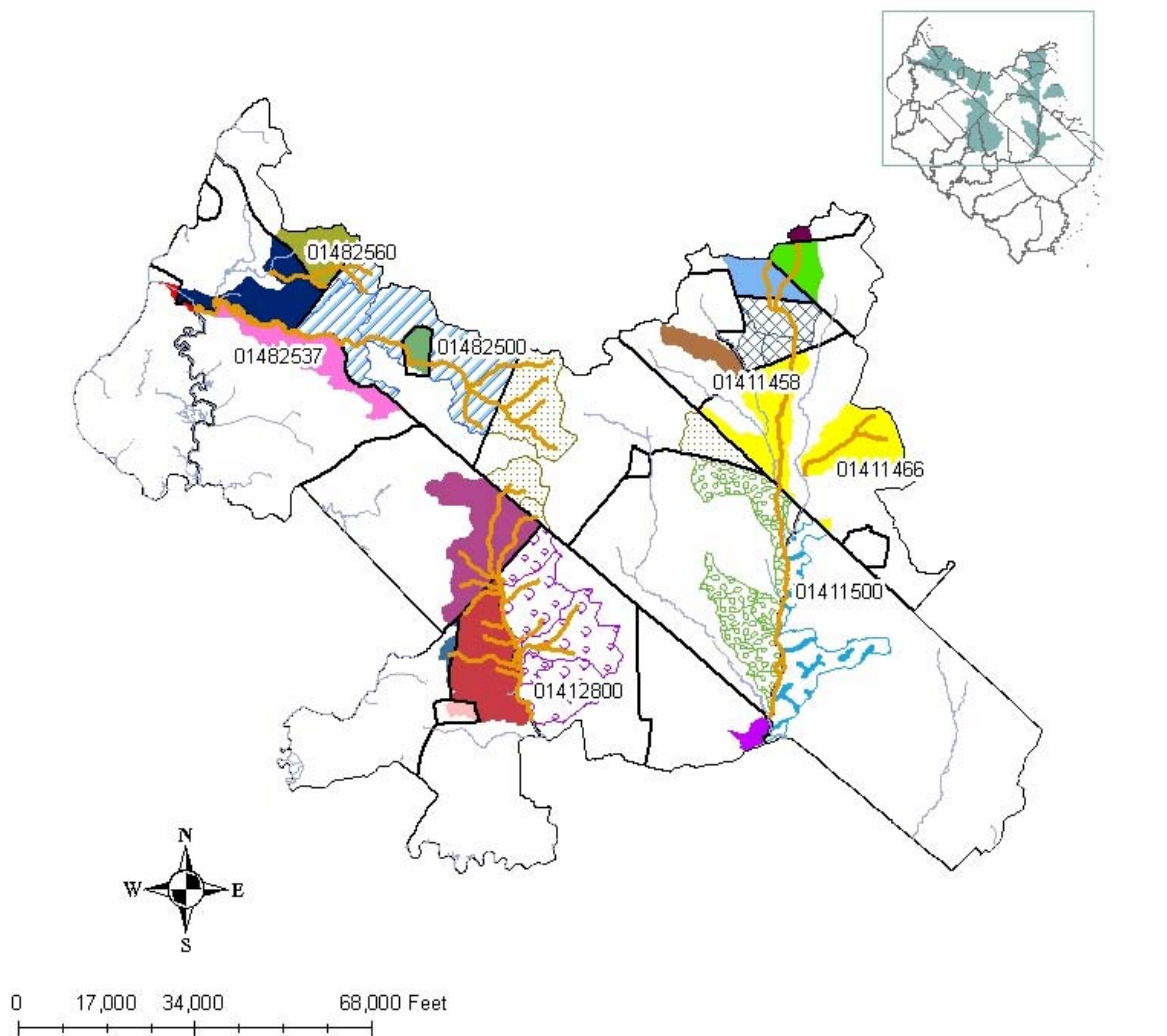
Watershed Management Area 13



Watershed Management Area 15



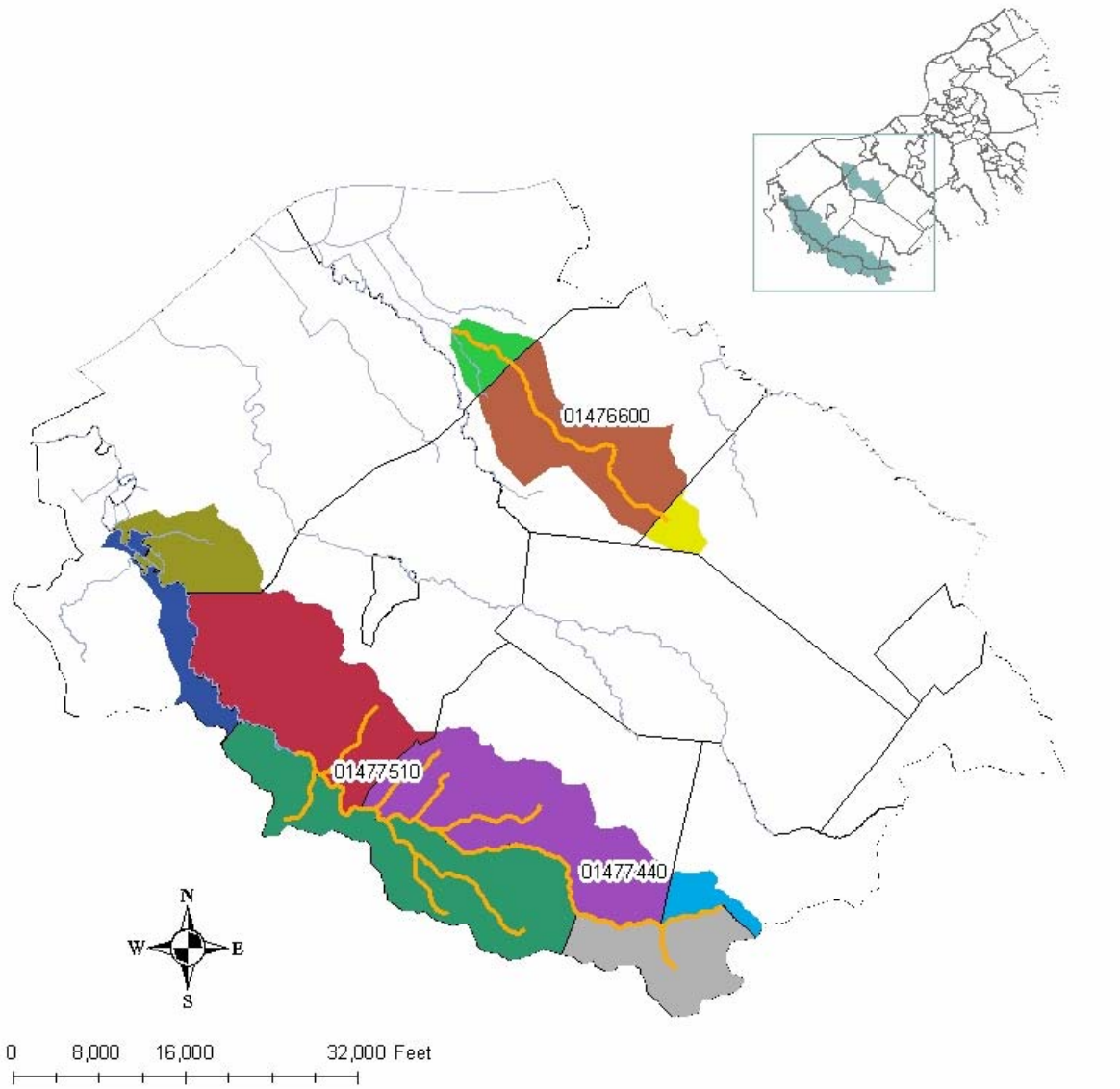
Watershed Management Area 17



Legend

- OWTS Impaired Segments
 - Major Streams
 - Municipal Boundaries
- Sections of Municipalities within Affected HUC 14 Watersheds**
- | | | |
|-------------------|---------------------|---------------------|
| ALLOWAY TWP | GLASSBORO BORO | UPPER PITTSBORO TWP |
| CARNEYS POINT TWP | HOPEWELL TWP | VINELAND CITY |
| CLAYTON BORO | MANNINGTON TWP | WASHINGTON TWP |
| DEERFIELD TWP | MONROE TWP | WOODSTOWN BORO |
| ELK TWP | OLDMANS TWP | |
| FRANKLIN TWP | PENNSVILLE TWP | |
| | PILESGROVE TWP | |
| | PITTSBORO TWP | |
| | SHILOH BORO | |
| | STOW CREEK TWP | |
| | UPPER DEERFIELD TWP | |

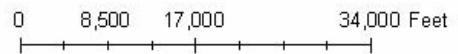
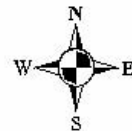
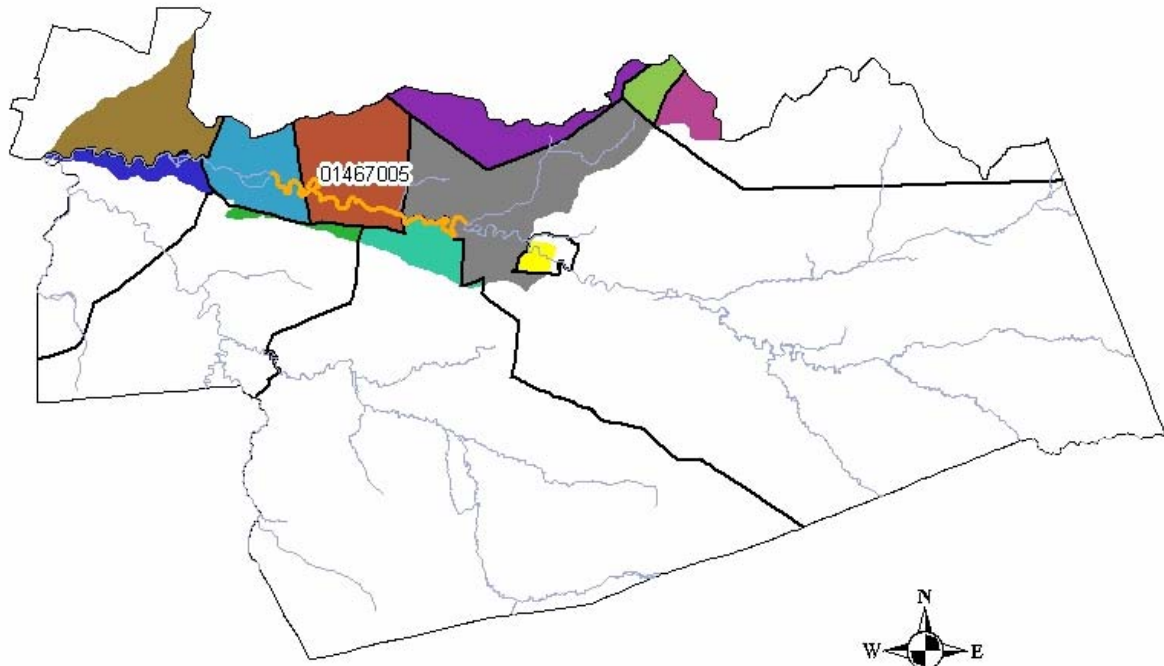
Watershed Management Area 18



Legend

- | | | |
|-----------------------|---|----------------------|
| OWTS Impaired Segment | Sections of Municipalities within Affected HUC 14 Watersheds | PILESGROVE TWP |
| Major Streams | EAST GREENWICH TWP | SOUTH HARRISON TWP |
| Municipal Boundaries | ELK TWP | UPPER PITTSBURGH TWP |
| | GREENWICH TWP | WOOLMICH TWP |
| | LOGAN TWP | |
| | MANTUA TWP | |
| | OLDMANS TWP | |

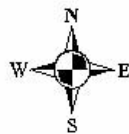
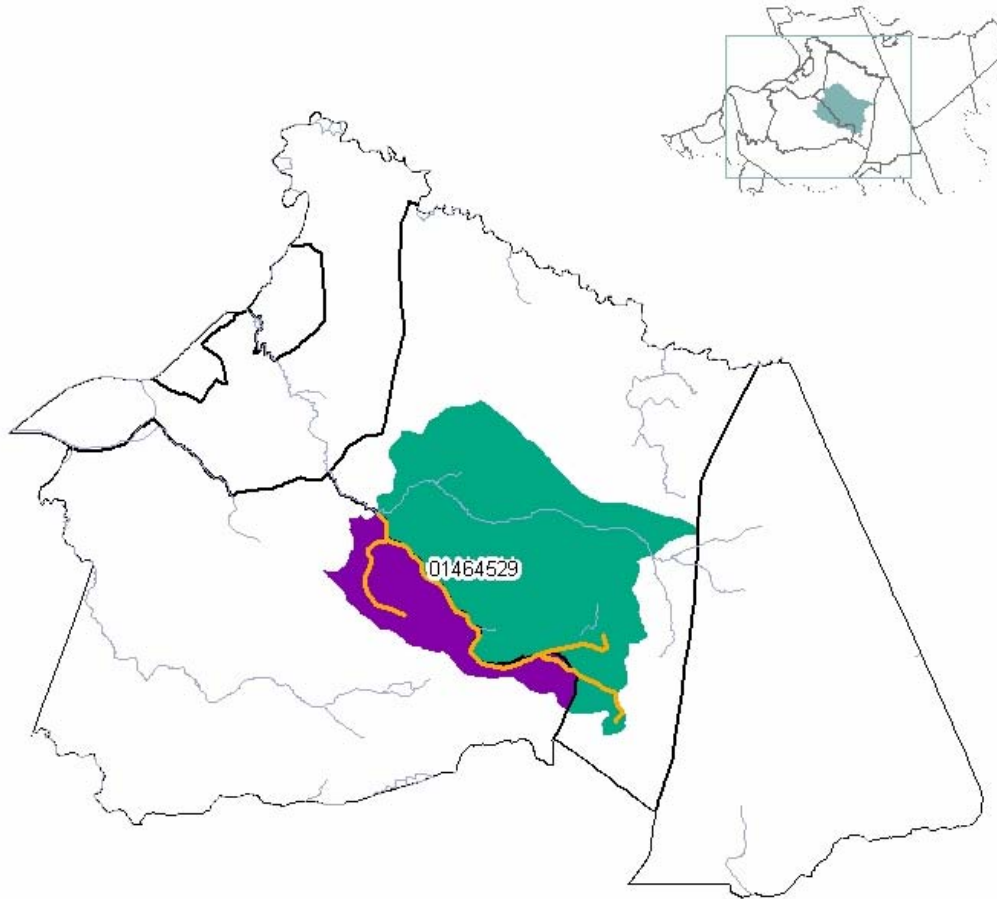
Watershed Management Area 19



Legend

- | | | |
|-----------------------|---|------------------|
| OWTS Impaired Segment | Sections of Municipalities within Affected HUC 14 Watersheds | PEMBERTON TWP |
| Major Streams | EASTAMP TON TWP | SOUTHAMPTON TWP |
| Municipal Boundaries | HAINESPORT TWP | SPRINGFIELD TWP |
| | LUMBERTON TWP | WESTAMP TON TWP |
| | MOUNT HOLLY TWP | WRIGHTSTOWN BORO |
| | NEW HANOVER TWP | |
| | PEMBERTON BORO | |

Watershed Management Area 20



0 6,000 12,000 24,000 Feet

Legend

- | | |
|---|--|
|  OWTS Impaired Segment | Sections of Municipalities within Affected HUC 14 Watersheds |
|  Major Streams |  CHESTERFIELD TWP |
|  Municipal Boundaries |  MANSFIELD TWP |