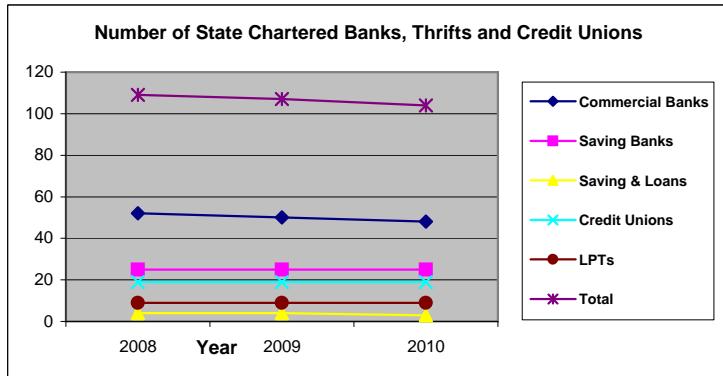
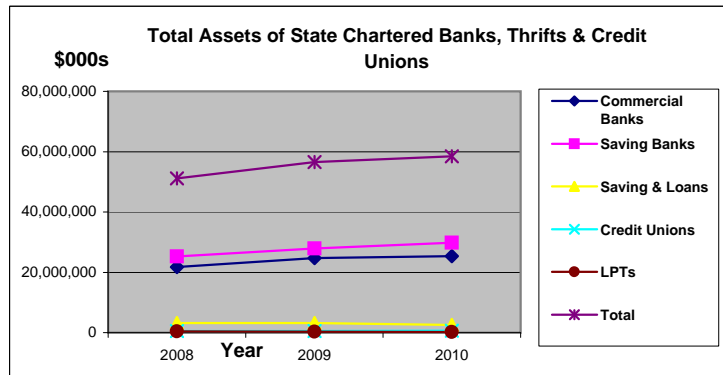


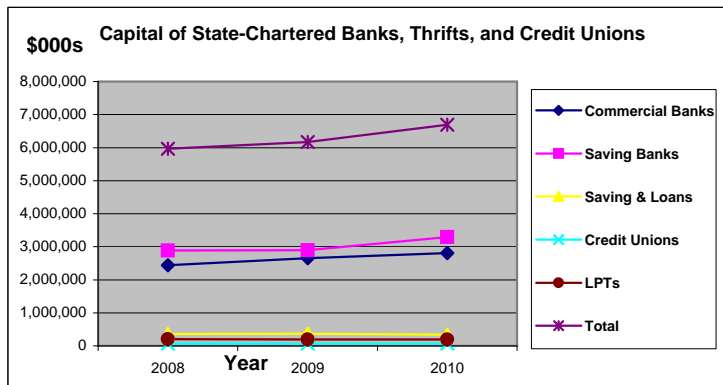
Summary Statistics of State-Chartered Banks, Thrifts and Credit Unions 12/31/2008 -- 12/31/2010



Type of Banks	31-Dec-08	31-Dec-09	31-Dec-10
	Number of Institutions	Number of Institutions	Number of Institutions
Commercial Banks	52	50	48
Saving Banks	25	25	25
Saving & Loans	4	4	3
Credit Unions	19	19	19
LPTs	9	9	9
Total	109	107	104

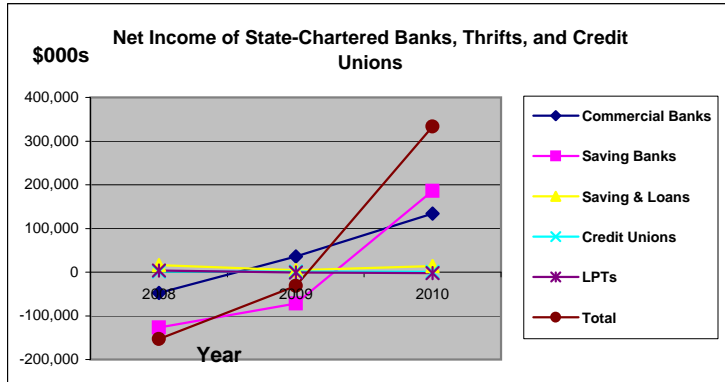


Type of Banks	31-Dec-08	31-Dec-09	31-Dec-10
	Total Assets (\$000s)	Total Assets (\$000s)	Total Assets (\$000s)
Commercial Banks	21,801,914	24,678,275	25,347,535
Saving Banks	25,235,075	27,853,906	29,813,356
Saving & Loans	3,228,766	3,186,316	2,531,521
Credit Unions	506,732	574,135	597,661
LPTs	410,972	293,238	206,571
Total	51,183,459	56,585,870	58,496,644

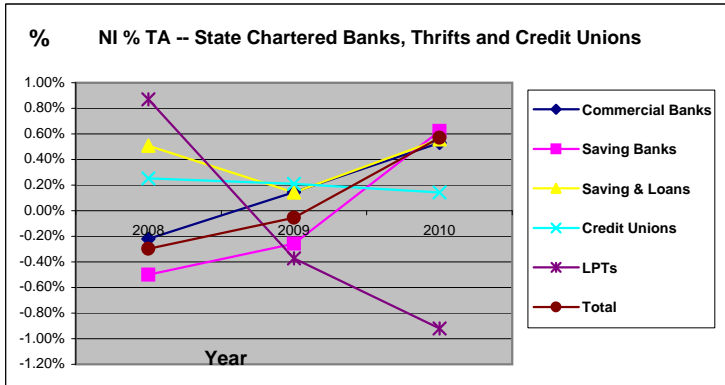


Type of Banks	31-Dec-08	31-Dec-09	31-Dec-10
	Total Capital (\$000s)	Total Capital (\$000s)	Total Capital (\$000s)
Commercial Banks	2,441,969	2,654,961	2,806,774
Saving Banks	2,887,885	2,895,977	3,294,166
Saving & Loans	358,685	364,510	336,369
Credit Unions	68,566	65,711	66,162
LPTs	206,489	191,699	193,227
Total	5,963,594	6,172,858	6,696,698

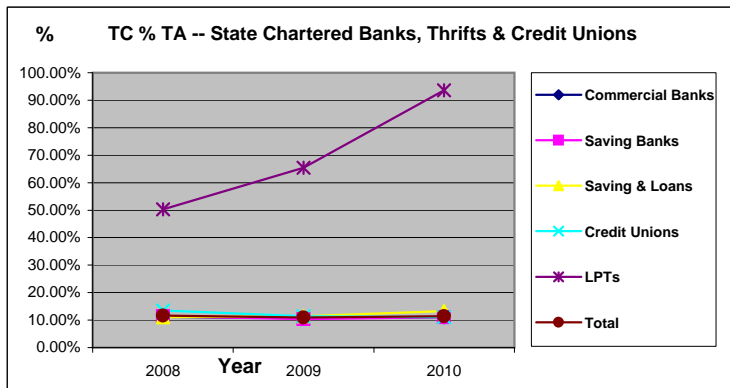
Summary Statistics of State-Chartered Banks, Thrifts and Credit Unions 12/31/2008 -- 12/31/2010



Type of Banks	31-Dec-08 Net Income (\$000s)	31-Dec-09 Net Income (\$000s)	31-Dec-10 Net Income (\$000s)
Commercial Banks	-47,732	35,698	134,222
Saving Banks	-126,418	-71,907	185,739
Saving & Loans	16,407	4,515	14,127
Credit Unions	1,283	1,201	853
LPTs	3,579	-1,092	-1,899
Total	-152,881	-31,585	333,042



Type of Banks	31-Dec-08 Net Income % of Tot Assets	31-Dec-09 Net Income % of Tot Assets	31-Dec-10 Net Income % of Tot Assets
Commercial Banks	-0.22%	0.14%	0.53%
Saving Banks	-0.50%	-0.26%	0.62%
Saving & Loans	0.51%	0.14%	0.56%
Credit Unions	0.25%	0.21%	0.14%
LPTs	0.87%	-0.37%	-0.92%
Total	-0.30%	-0.06%	0.57%



Type of Banks	31-Dec-08 Tot Capital % of Tot Assets	31-Dec-09 Tot Capital % of Tot Assets	31-Dec-10 Tot Capital % of Tot Assets
Commercial Banks	11.20%	10.76%	11.07%
Saving Banks	11.44%	10.40%	11.05%
Saving & Loans	11.11%	11.44%	13.29%
Credit Unions	13.53%	11.45%	11.07%
LPTs	50.24%	65.37%	93.54%
Total	11.65%	10.91%	11.45%