



ANNUAL STATEMENT
 FOR THE YEAR ENDED DECEMBER 31, 2022
 OF THE CONDITION AND AFFAIRS OF THE
LONGEVITY HEALTH PLAN OF NEW JERSEY INSURANCE COMPANY, INC.

NAIC Group Code 4920, 4920 NAIC Company Code 16355 Employer's ID Number 82-5331490
 (Current) (Prior)

Organized under the Laws of NJ State of Domicile or Port of Entry NJ
 Country of Domicile US
 Licensed as business type: Preferred Provider Organization Is HMO Federally Qualified?
 Incorporated/Organized 03/19/2018 Commenced Business 01/01/2020
 Statutory Home Office 695 Cross Street Suite #185 Lakewood, NJ, US 08701
 Main Administrative Office 11780 US Highway One, Suite: N107
 Palm Beach Gardens, FL, US 33408 561-444-0710
 (Telephone)
 Mail Address 11780 US Highway One, Suite: N107 Palm Beach Gardens, FL, US 33408
 Primary Location of Books and
 Records 11780 US Highway One, Suite: N107
 Palm Beach Gardens, FL, US 33408 561-444-0710
 (Telephone)
 Internet Website Address N/A
 Statutory Statement Contact Vicky Zhai 561-632-8915
 (Telephone)
 vicky.zhai@longevityhealthplan.com
 (E-Mail) (Fax)

OFFICERS

..... Rene Lerer, President & CEO Leslie Steven Granow, CFO & Treasurer
 Brendan Todd Rager, Secretary

DIRECTORS OR TRUSTEES

..... Rene Lerer
 Leslie Steven Granow Brendan Todd Rager

State of Florida
 County of Palm Beach SS

The officers of this reporting entity being duly sworn, each depose and say that they are the described officers of said reporting entity, and that on the reporting period stated above, all of the herein described assets were the absolute property of the said reporting entity, free and clear from any liens or claims thereon, except as herein stated, and that this statement, together with related exhibits, schedules and explanations therein contained, annexed or referred to, is a full and true statement of all the assets and liabilities and of the condition and affairs of the said reporting entity as of the reporting period stated above, and of its income and deductions therefrom for the period ended, and have been completed in accordance with the NAIC Annual Statement Instructions and Accounting Practices and Procedures manual except to the extent that: (1) state law may differ; or, (2) that state rules or regulations require differences in reporting not related to accounting practices and procedures, according to the best of their information, knowledge and belief, respectively. Furthermore, the scope of this attestation by the described officers also includes the related corresponding electronic filing with the NAIC, when required, that is an exact copy (except for formatting differences due to electronic filing) of the enclosed statement. The electronic filing may be requested by various regulators in lieu of or in addition to the enclosed statement.

x _____ x _____ x _____
 Leslie Steven Granow Brendan Todd Rager
 CFO & Treasurer Secretary

Subscribed and sworn to before me
 this _____ day of

- a. Is this an original filing? Yes
 b. If no:
 1. State the amendment number: _____
 2. Date filed: _____
 3. Number of pages attached: _____

x _____

ASSETS

	Current Year			Prior Year
	1	2	3	4
	Assets	Nonadmitted Assets	Net Admitted Assets (Cols. 1 - 2)	Net Admitted Assets
1. Bonds (Schedule D)	7,990,298		7,990,298	
2. Stocks (Schedule D):				
2.1 Preferred stocks				
2.2 Common stocks				
3. Mortgage loans on real estate (Schedule B):				
3.1 First liens				
3.2 Other than first liens				
4. Real estate (Schedule A):				
4.1 Properties occupied by the company (less \$ encumbrances)				
4.2 Properties held for the production of income (less \$ encumbrances)				
4.3 Properties held for sale (less \$ encumbrances)				
5. Cash (\$ 269,900, Schedule E - Part 1), cash equivalents (\$ 1,701,358, Schedule E - Part 2) and short-term investments (\$ 0, Schedule DA)	1,971,258		1,971,258	8,491,163
6. Contract loans (including \$ premium notes)				
7. Derivatives (Schedule DB)				
8. Other invested assets (Schedule BA)				
9. Receivables for securities				
10. Securities lending reinvested collateral assets (Schedule DL)				
11. Aggregate write-ins for invested assets				
12. Subtotals, cash and invested assets (Lines 1 to 11)	9,961,556		9,961,556	8,491,163
13. Title plants less \$ charged off (for Title insurers only)				
14. Investment income due and accrued	21,328		21,328	3
15. Premiums and considerations:				
15.1 Uncollected premiums and agents' balances in the course of collection	1,941		1,941	665
15.2 Deferred premiums, agents' balances and installments booked but deferred and not yet due (including \$ earned but unbilled premiums)				
15.3 Accrued retrospective premiums (\$) and contracts subject to redetermination (\$ 1,607,940)	1,607,940		1,607,940	571,595
16. Reinsurance:				
16.1 Amounts recoverable from reinsurers				
16.2 Funds held by or deposited with reinsured companies				
16.3 Other amounts receivable under reinsurance contracts				
17. Amounts receivable relating to uninsured plans	1,791,353		1,791,353	829,614
18.1 Current federal and foreign income tax recoverable and interest thereon				42,000
18.2 Net deferred tax asset	241,407	111,314	130,093	368,284
19. Guaranty funds receivable or on deposit				
20. Electronic data processing equipment and software				
21. Furniture and equipment, including health care delivery assets (\$)				
22. Net adjustment in assets and liabilities due to foreign exchange rates				
23. Receivables from parent, subsidiaries and affiliates				
24. Health care (\$ 258,222) and other amounts receivable	309,253	51,031	258,222	628,302
25. Aggregate write-ins for other-than-invested assets				
26. Total assets excluding Separate Accounts, Segregated Accounts and Protected Cell Accounts (Lines 12 to 25)	13,934,778	162,345	13,772,433	10,931,626
27. From Separate Accounts, Segregated Accounts and Protected Cell Accounts				
28. Total (Lines 26 and 27)	13,934,778	162,345	13,772,433	10,931,626
Details of Write-Ins				
1101.				
1102.				
1103.				
1198. Summary of remaining write-ins for Line 11 from overflow page				
1199. Totals (Lines 1101 through 1103 plus 1198) (Line 11 above)				
2501.				
2502.				
2503.				
2598. Summary of remaining write-ins for Line 25 from overflow page				
2599. Totals (Lines 2501 through 2503 plus 2598) (Line 25 above)				

LIABILITIES, CAPITAL AND SURPLUS

	Current Year			Prior Year
	1 Covered	2 Uncovered	3 Total	4 Total
1. Claims unpaid (less \$ reinsurance ceded)	3,652,633		3,652,633	4,202,960
2. Accrued medical incentive pool and bonus amounts	1,695,325		1,695,325	250,699
3. Unpaid claims adjustment expenses	30,482		30,482	37,818
4. Aggregate health policy reserves, including the liability of \$ for medical loss ratio rebate per the Public Health Service Act				
5. Aggregate life policy reserves				
6. Property/casualty unearned premium reserves				
7. Aggregate health claim reserves				
8. Premiums received in advance	365,738		365,738	172,218
9. General expenses due or accrued	7,704		7,704	17,548
10.1 Current federal and foreign income tax payable and interest thereon (including \$ on realized capital gains (losses))				
10.2 Net deferred tax liability				
11. Ceded reinsurance premiums payable				
12. Amounts withheld or retained for the account of others				
13. Remittances and items not allocated				
14. Borrowed money (including \$ current) and interest thereon \$ (including \$ current)				
15. Amounts due to parent, subsidiaries and affiliates	1,126,648		1,126,648	759,203
16. Derivatives				
17. Payable for securities				
18. Payable for securities lending				
19. Funds held under reinsurance treaties (with \$ authorized reinsurers, \$ unauthorized reinsurers and \$ certified reinsurers)				
20. Reinsurance in unauthorized and certified (\$) companies				
21. Net adjustments in assets and liabilities due to foreign exchange rates				
22. Liability for amounts held under uninsured plans	937,182		937,182	489,405
23. Aggregate write-ins for other liabilities (including \$ current)				
24. Total liabilities (Lines 1 to 23)	7,815,712		7,815,712	5,929,851
25. Aggregate write-ins for special surplus funds	XXX	XXX		
26. Common capital stock	XXX	XXX	700,000	700,000
27. Preferred capital stock	XXX	XXX		
28. Gross paid in and contributed surplus	XXX	XXX	6,275,951	6,275,951
29. Surplus notes	XXX	XXX		
30. Aggregate write-ins for other-than-special surplus funds	XXX	XXX		
31. Unassigned funds (surplus)	XXX	XXX	(1,019,230)	(1,974,176)
32. Less treasury stock, at cost:				
32.1 shares common (value included in Line 26 \$)	XXX	XXX		
32.2 shares preferred (value included in Line 27 \$)	XXX	XXX		
33. Total capital and surplus (Lines 25 to 31 minus Line 32)	XXX	XXX	5,956,721	5,001,775
34. Total liabilities, capital and surplus (Lines 24 and 33)	XXX	XXX	13,772,433	10,931,626
Details of Write-Ins				
2301.				
2302.				
2303.				
2398. Summary of remaining write-ins for Line 23 from overflow page				
2399. Totals (Lines 2301 through 2303 plus 2398) (Line 23 above)				
2501.	XXX	XXX		
2502.	XXX	XXX		
2503.	XXX	XXX		
2598. Summary of remaining write-ins for Line 25 from overflow page	XXX	XXX		
2599. Totals (Lines 2501 through 2503 plus 2598) (Line 25 above)	XXX	XXX		
3001.	XXX	XXX		
3002.	XXX	XXX		
3003.	XXX	XXX		
3098. Summary of remaining write-ins for Line 30 from overflow page	XXX	XXX		
3099. Totals (Lines 3001 through 3003 plus 3098) (Line 30 above)	XXX	XXX		

STATEMENT OF REVENUE AND EXPENSES

	Current Year		Prior Year
	1 Uncovered	2 Total	3 Total
1. Member Months	XXX	9,967	7,604
2. Net premium income (including \$ non-health premium income)	XXX	27,794,522	18,811,016
3. Change in unearned premium reserves and reserve for rate credits	XXX		
4. Fee-for-service (net of \$ medical expenses)	XXX		
5. Risk revenue	XXX		
6. Aggregate write-ins for other health care related revenues	XXX		
7. Aggregate write-ins for other non-health revenues	XXX		
8. Total revenues (Lines 2 to 7)	XXX	27,794,522	18,811,016
Hospital and Medical:			
9. Hospital/medical benefits		14,314,681	11,686,278
10. Other professional services		3,791,284	1,339,275
11. Outside referrals			
12. Emergency room and out-of-area		208,541	135,211
13. Prescription drugs		1,233,141	928,317
14. Aggregate write-ins for other hospital and medical		125,252	204,004
15. Incentive pool, withhold adjustments and bonus amounts		2,259,628	739,220
16. Subtotal (Lines 9 to 15)		21,932,527	15,032,305
Less:			
17. Net reinsurance recoveries			9,711
18. Total hospital and medical (Lines 16 minus 17)		21,932,527	15,022,594
19. Non-health claims (net)			
20. Claims adjustment expenses, including \$ 1,348,277 cost containment expenses		1,843,846	878,224
21. General administrative expenses		3,043,405	2,151,602
22. Increase in reserves for life and accident and health contracts (including \$ increase in reserves for life only)			
23. Total underwriting deductions (Lines 18 through 22)		26,819,778	18,052,420
24. Net underwriting gain or (loss) (Lines 8 minus 23)	XXX	974,744	758,596
25. Net investment income earned (Exhibit of Net Investment Income, Line 17)		112,036	411
26. Net realized capital gains (losses) less capital gains tax of \$		(556)	
27. Net investment gains (losses) (Lines 25 plus 26)		111,480	411
28. Net gain or (loss) from agents' or premium balances charged off [(amount recovered \$) (amount charged off \$)]			
29. Aggregate write-ins for other income or expenses			
30. Net income or (loss) after capital gains tax and before all other federal income taxes (Lines 24 plus 27 plus 28 plus 29)	XXX	1,086,224	759,007
31. Federal and foreign income taxes incurred	XXX		
32. Net income (loss) (Lines 30 minus 31)	XXX	1,086,224	759,007
Details of Write-Ins			
0601.	XXX		
0602.	XXX		
0603.	XXX		
0698. Summary of remaining write-ins for Line 6 from overflow page	XXX		
0699. Totals (Lines 0601 through 0603 plus 0698) (Line 6 above)	XXX		
0701.	XXX		
0702.	XXX		
0703.	XXX		
0798. Summary of remaining write-ins for Line 7 from overflow page	XXX		
0799. Totals (Lines 0701 through 0703 plus 0798) (Line 7 above)	XXX		
1401. Durable Medical Equipment		125,252	204,004
1402.			
1403.			
1498. Summary of remaining write-ins for Line 14 from overflow page			
1499. Totals (Lines 1401 through 1403 plus 1498) (Line 14 above)		125,252	204,004
2901.			
2902.			
2903.			
2998. Summary of remaining write-ins for Line 29 from overflow page			
2999. Totals (Lines 2901 through 2903 plus 2998) (Line 29 above)			

STATEMENT OF REVENUE AND EXPENSES (CONTINUED)

	1	2
CAPITAL & SURPLUS ACCOUNT	Current Year	Prior Year
33. Capital and surplus prior reporting year.....	5,001,775	3,979,402
34. Net income or (loss) from Line 32.....	1,086,224	759,007
35. Change in valuation basis of aggregate policy and claim reserves.....		
36. Change in net unrealized capital gains (losses) less capital gains tax of \$.....		
37. Change in net unrealized foreign exchange capital gain or (loss).....		
38. Change in net deferred income tax.....	(250,559)	491,966
39. Change in nonadmitted assets.....	119,281	(228,600)
40. Change in unauthorized and certified reinsurance.....		
41. Change in treasury stock.....		
42. Change in surplus notes.....		
43. Cumulative effect of changes in accounting principles.....		
44. Capital Changes:		
44.1 Paid in.....		
44.2 Transferred from surplus (Stock Dividend).....		
44.3 Transferred to surplus.....		
45. Surplus adjustments:		
45.1 Paid in.....	-	
45.2 Transferred to capital (Stock Dividend).....		
45.3 Transferred from capital.....		
46. Dividends to stockholders.....		
47. Aggregate write-ins for gains or (losses) in surplus.....		
48. Net change in capital and surplus (Lines 34 to 47).....	954,946	1,022,373
49. Capital and surplus end of reporting year (Line 33 plus 48).....	5,956,721	5,001,775
Details of Write-Ins		
4701.....		
4702.....		
4703.....		
4798. Summary of remaining write-ins for Line 47 from overflow page.....		
4799. Totals (Lines 4701 through 4703 plus 4798) (Line 47 above).....		

CASH FLOW

	1	2
	Current Year	Prior Year
Cash from Operations		
1. Premiums collected net of reinsurance	26,939,661	18,734,074
2. Net investment income	84,148	410
3. Miscellaneous income		
4. Total (Lines 1 to 3)	27,023,809	18,734,484
5. Benefit and loss related payments	20,561,235	13,654,058
6. Net transfers to Separate Accounts, Segregated Accounts and Protected Cell Accounts		
7. Commissions, expenses paid and aggregate write-ins for deductions	5,407,633	2,476,525
8. Dividends paid to policyholders		
9. Federal and foreign income taxes paid (recovered) net of \$ tax on capital gains (losses)	(42,000)	42,000
10. Total (Lines 5 through 9)	25,926,868	16,172,583
11. Net cash from operations (Line 4 minus Line 10)	1,096,941	2,561,901
Cash from Investments		
12. Proceeds from investments sold, matured or repaid:		
12.1 Bonds		
12.2 Stocks		
12.3 Mortgage loans		
12.4 Real estate		
12.5 Other invested assets		
12.6 Net gains or (losses) on cash, cash equivalents and short-term investments		
12.7 Miscellaneous proceeds		
12.8 Total investment proceeds (Lines 12.1 to 12.7)		
13. Cost of investments acquired (long-term only):		
13.1 Bonds	7,984,291	
13.2 Stocks		
13.3 Mortgage loans		
13.4 Real estate		
13.5 Other invested assets		
13.6 Miscellaneous applications		
13.7 Total investments acquired (Lines 13.1 to 13.6)	7,984,291	
14. Net increase (decrease) in contract loans and premium notes		
15. Net cash from investments (Line 12.8 minus Line 13.7 minus Line 14)	(7,984,291)	
Cash from Financing and Miscellaneous Sources		
16. Cash provided (applied):		
16.1 Surplus notes, capital notes		
16.2 Capital and paid in surplus, less treasury stock		
16.3 Borrowed funds		
16.4 Net deposits on deposit-type contracts and other insurance liabilities		
16.5 Dividends to stockholders		
16.6 Other cash provided (applied)	367,445	
17. Net cash from financing and miscellaneous sources (Lines 16.1 to 16.4 minus Line 16.5 plus Line 16.6)	367,445	
Reconciliation of Cash, Cash Equivalents and Short-Term Investments		
18. Net change in cash, cash equivalents and short-term investments (Line 11, plus Lines 15 and 17)	(6,519,905)	2,561,901
19. Cash, cash equivalents and short-term investments:		
19.1 Beginning of year	8,491,163	5,929,262
19.2 End of year (Line 18 plus Line 19.1)	1,971,258	8,491,163

Note: Supplemental disclosures of cash flow information for non-cash transactions:

20.0001		
---------------	--	--

ANALYSIS OF OPERATIONS BY LINES OF BUSINESS

	1	2	3	4	5	6	7	8	9	10
	Total	Comprehensive (Hospital & Medical)	Medicare Supplement	Dental Only	Vision Only	Federal Employees Health Benefits Plan	Title XVIII Medicare	Title XIX Medicaid	Other Health	Other Non- Health
1. Net premium income	27,794,522						27,794,522			
2. Change in unearned premium reserves and reserve for rate credit										
3. Fee-for-service (net of \$ medical expenses)										XXX
4. Risk revenue										XXX
5. Aggregate write-ins for other health care related revenues										XXX
6. Aggregate write-ins for other non-health care related revenues		XXX	XXX	XXX	XXX	XXX	XXX	XXX	XXX	
7. Total revenues (Lines 1 to 6)	27,794,522						27,794,522			
8. Hospital/medical benefits	14,314,681						14,314,681			XXX
9. Other professional services	3,791,284						3,791,284			XXX
10. Outside referrals										XXX
11. Emergency room and out-of-area	208,541						208,541			XXX
12. Prescription drugs	1,233,141						1,233,141			XXX
13. Aggregate write-ins for other hospital and medical	125,252						125,252			XXX
14. Incentive pool, withhold adjustments and bonus amounts	2,259,628						2,259,628			XXX
15. Subtotal (Lines 8 to 14)	21,932,527						21,932,527			XXX
16. Net reinsurance recoveries										XXX
17. Total hospital and medical (Lines 15 minus 16)	21,932,527						21,932,527			XXX
18. Non-health claims (net)		XXX	XXX	XXX	XXX	XXX	XXX	XXX	XXX	
19. Claims adjustment expenses including \$ 1,348,277 cost containment expenses	1,843,846						1,843,846			
20. General administrative expenses	3,043,405						3,043,405			
21. Increase in reserves for accident and health contracts										XXX
22. Increase in reserves for life contracts		XXX	XXX	XXX	XXX	XXX	XXX	XXX	XXX	
23. Total underwriting deductions (Lines 17 to 22)	26,819,778						26,819,778			
24. Net underwriting gain or (loss) (Line 7 minus Line 23)	974,744						974,744			
Details of Write-Ins										
0501.										XXX
0502.										XXX
0503.										XXX
0598. Summary of remaining write-ins for Line 5 from overflow page										XXX
0599. Totals (Lines 0501 through 0503 plus 0598) (Line 5 above)										XXX
0601.		XXX	XXX	XXX	XXX	XXX	XXX	XXX	XXX	
0602.		XXX	XXX	XXX	XXX	XXX	XXX	XXX	XXX	
0603.		XXX	XXX	XXX	XXX	XXX	XXX	XXX	XXX	
0698. Summary of remaining write-ins for Line 6 from overflow page		XXX	XXX	XXX	XXX	XXX	XXX	XXX	XXX	
0699. Totals (Lines 0601 through 0603 plus 0698) (Line 6 above)		XXX	XXX	XXX	XXX	XXX	XXX	XXX	XXX	
1301. Durable Medical Equipment	125,252						125,252			XXX
1302.										XXX
1303.										XXX
1398. Summary of remaining write-ins for Line 13 from overflow page										XXX
1399. Totals (Lines 1301 through 1303 plus 1398) (Line 13 above)	125,252						125,252			XXX

UNDERWRITING AND INVESTMENT EXHIBIT

PART 1 – PREMIUMS

Line of Business		1 Direct Business	2 Reinsurance Assumed	3 Reinsurance Ceded	4 Net Premium Income (Cols. 1+2-3)
1.	Comprehensive (hospital and medical) individual.....				
2.	Comprehensive (hospital and medical) group.....				
3.	Medicare Supplement.....				
4.	Dental only.....				
5.	Vision only.....				
6.	Federal Employees Health Benefits Plan.....				
7.	Title XVIII – Medicare.....	27,847,003		52,481	27,794,522
8.	Title XIX – Medicaid.....				
9.	Credit A&H.....				
10.	Disability Income.....				
11.	Long-Term Care.....				
12.	Other health.....				
13.	Health subtotal (Lines 1 through 12).....	27,847,003		52,481	27,794,522
14.	Life.....				
15.	Property/casualty.....				
16.	Totals (Lines 13 to 15).....	27,847,003		52,481	27,794,522

UNDERWRITING AND INVESTMENT EXHIBIT

PART 2 – CLAIMS INCURRED DURING THE YEAR

	1 Total	Comprehensive (Hospital & Medical)		4 Medicare Supplement	5 Dental Only	6 Vision Only	7 Federal Employees Health Benefits Plan	8 Title XVIII Medicare	9 Title XIX Medicaid	10 Credit A&H	11 Disability Income	12 Long-Term Care	13 Other Health	14 Other Non-Health
		2 Individual	3 Group											
1. Payments during the year:														
1.1 Direct	19,746,233							19,746,233						
1.2 Reinsurance assumed														
1.3 Reinsurance ceded														
1.4 Net	19,746,233							19,746,233						
2. Paid medical incentive pools and bonuses	815,002							815,002						
3. Claim liability December 31, current year from Part 2A:														
3.1 Direct	3,652,633							3,652,633						
3.2 Reinsurance assumed														
3.3 Reinsurance ceded														
3.4 Net	3,652,633							3,652,633						
4. Claim reserve December 31, current year from Part 2D:														
4.1 Direct														
4.2 Reinsurance assumed														
4.3 Reinsurance ceded														
4.4 Net														
5. Accrued medical incentive pools and bonuses, current year	1,695,325							1,695,325						
6. Net health care receivables (a)	(476,993)							(476,993)						
7. Amounts recoverable from reinsurers December 31, current year														
8. Claim liability December 31, prior year from Part 2A:														
8.1 Direct	4,202,960							4,202,960						
8.2 Reinsurance assumed														
8.3 Reinsurance ceded														
8.4 Net	4,202,960							4,202,960						
9. Claim reserve December 31, prior year from Part 2D:														
9.1 Direct														
9.2 Reinsurance assumed														
9.3 Reinsurance ceded														
9.4 Net														
10. Accrued medical incentive pools and bonuses, prior year	250,699							250,699						
11. Amounts recoverable from reinsurers December 31, prior year														
12. Incurred benefits:														
12.1 Direct	19,672,899							19,672,899						
12.2 Reinsurance assumed														
12.3 Reinsurance ceded														
12.4 Net	19,672,899							19,672,899						
13. Incurred medical incentive pools and bonuses	2,259,628							2,259,628						

(a) Excludes \$ loans or advances to providers not yet expensed.

UNDERWRITING AND INVESTMENT EXHIBIT

PART 2A – CLAIMS LIABILITY END OF CURRENT YEAR

	1 Total	Comprehensive (Hospital & Medical)		4 Medicare Supplement	5 Dental Only	6 Vision Only	7 Federal Employees Health Benefits Plan	8 Title XVIII Medicare	9 Title XIX Medicaid	10 Credit A&H	11 Disability Income	12 Long-Term Care	13 Other Health	14 Other Non-Health
		2 Individual	3 Group											
1. Reported in Process of Adjustment:														
1.1 Direct	269,119							269,119						
1.2 Reinsurance assumed														
1.3 Reinsurance ceded														
1.4 Net	269,119							269,119						
2. Incurred but Unreported:														
2.1 Direct	3,383,514							3,383,514						
2.2 Reinsurance assumed														
2.3 Reinsurance ceded														
2.4 Net	3,383,514							3,383,514						
3. Amounts Withheld from Paid Claims and Capitations:														
3.1 Direct														
3.2 Reinsurance assumed														
3.3 Reinsurance ceded														
3.4 Net														
4. TOTALS:														
4.1 Direct	3,652,633							3,652,633						
4.2 Reinsurance assumed														
4.3 Reinsurance ceded														
4.4 Net	3,652,633							3,652,633						

UNDERWRITING AND INVESTMENT EXHIBIT
PART 2B – ANALYSIS OF CLAIMS UNPAID – PRIOR YEAR-NET OF REINSURANCE

Line of Business	Claims Paid During the Year		Claim Reserve and Claim Liability December 31 of Current Year		5	6
	1 On Claims Incurred Prior to January 1 of Current Year	2 On Claims Incurred During the Year	3 On Claims Unpaid December 31 of Prior Year	4 On Claims Incurred During the Year	Claims Incurred in Prior Years (Columns 1 + 3)	Estimated Claim Reserve and Claim Liability December 31 of Prior Year
1. Comprehensive (hospital and medical) individual.....						
2. Comprehensive (hospital and medical) group.....						
3. Medicare Supplement.....						
4. Dental Only.....						
5. Vision Only.....						
6. Federal Employees Health Benefits Plan.....						
7. Title XVIII – Medicare.....	2,755,411	16,990,822	398,477	3,254,156	3,153,888	4,202,960
8. Title XIX – Medicaid.....						
9. Credit A&H.....						
10. Disability Income.....						
11. Long-Term Care.....						
12. Other health.....						
13. Health subtotal (Lines 1 to 12).....	2,755,411	16,990,822	398,477	3,254,156	3,153,888	4,202,960
14. Health care receivables (a).....		309,253				786,246
15. Other non-health.....						
16. Medical incentive pools and bonus amounts.....	87,223	727,779	121,208	1,574,117	208,431	250,699
17. Totals (Lines 13 - 14 + 15 + 16).....	2,842,634	17,409,348	519,685	4,828,273	3,362,319	3,667,413

(a) Excludes \$ loans or advances to providers not yet expensed.

UNDERWRITING AND INVESTMENT EXHIBIT

PART 2C – DEVELOPMENT OF PAID AND INCURRED HEALTH CLAIMS

(\$000 Omitted)

GRAND TOTAL

Section A – Paid Health Claims

Year in Which Losses Were Incurred	Cumulative Net Amounts Paid				
	1 2018	2 2019	3 2020	4 2021	5 2022
1. Prior.....					
2. 2018.....					
3. 2019.....	XXX				
4. 2020.....	XXX	XXX	7,115	8,574	8,829
5. 2021.....	XXX	XXX	XXX	11,973	15,347
6. 2022.....	XXX	XXX	XXX	XXX	17,409

Section B – Incurred Health Claims

Year in Which Losses Were Incurred	Sum of Cumulative Net Amount Paid and Claim Liability, Claim Reserve and Medical Incentive Pool and Bonuses Outstanding at End of Year				
	1 2018	2 2019	3 2020	4 2021	5 2022
1. Prior.....					
2. 2018.....					
3. 2019.....	XXX				
4. 2020.....	XXX	XXX	9,978	9,179	8,829
5. 2021.....	XXX	XXX	XXX	15,822	15,867
6. 2022.....	XXX	XXX	XXX	XXX	22,238

Section C – Incurred Year Health Claims and Claims Adjustment Expense Ratio

Years in which Premiums were Earned and Claims were Incurred	1 Premiums Earned	2 Claims Payments	3 Claim Adjustment Expense Payments	4 (Col. 3/2) Percent	5 Claim and Claim Adjustment Expense Payments (Col. 2+3)	6 (Col. 5/1) Percent	7 Claims Unpaid	8 Unpaid Claims Adjustment Expenses	9 Total Claims and Claims Adjustment Expense Incurred (Col. 5+7+8)	10 (Col. 9/1) Percent
1. 2018.....										
2. 2019.....										
3. 2020.....	10,155	8,829	485	5.493	9,314	91.718	–		9,314	91.718
4. 2021.....	18,811	15,347	1,166	7.598	16,513	87.784	520		17,033	90.548
5. 2022.....	27,795	17,409	1,539	8.840	18,948	68.171	4,829	30	23,807	85.652

12.GT

UNDERWRITING AND INVESTMENT EXHIBIT
 PART 2C – DEVELOPMENT OF PAID AND INCURRED HEALTH CLAIMS
 (\$000 Omitted)
 HOSPITAL & MEDICAL

Section A – Paid Health Claims

Year in Which Losses Were Incurred	Cumulative Net Amounts Paid				
	1 2018	2 2019	3 2020	4 2021	5 2022
1. Prior.....	NONE				
2. 2018.....					
3. 2019.....					
4. 2020.....			XXX		
5. 2021.....			XXX	XXX	
6. 2022.....			XXX	XXX	XXX

Section B – Incurred Health Claims

Year in Which Losses Were Incurred	Sum of Cumulative Net Amount Paid and Claim Liability, Claim Reserve and Medical Incentive Pool and Bonuses Outstanding at End of Year				
	1 2018	2 2019	3 2020	4 2021	5 2022
1. Prior.....	NONE				
2. 2018.....					
3. 2019.....					
4. 2020.....			XXX		
5. 2021.....			XXX	XXX	
6. 2022.....			XXX	XXX	XXX

Section C – Incurred Year Health Claims and Claims Adjustment Expense Ratio

Years in which Premiums were Earned and Claims were Incurred	1 Premiums Earned	2 Claims Payments	3 Claim Adjustment Expense Payments	4 (Col. 3/2) Percent	5 Claim and Claim Adjustment Expense Payments (Col. 2+3)	6 (Col. 5/1) Percent	7 Claims Unpaid	8 Unpaid Claims Adjustment Expenses	9 Total Claims and Claims Adjustment Expense Incurred (Col. 5+7+8)	10 (Col. 9/1) Percent
1. 2018.....	NONE									
2. 2019.....										
3. 2020.....										
4. 2021.....										
5. 2022.....										

12HM

UNDERWRITING AND INVESTMENT EXHIBIT
 PART 2C – DEVELOPMENT OF PAID AND INCURRED HEALTH CLAIMS
 (\$000 Omitted)
 MEDICARE SUPPLEMENT

Section A – Paid Health Claims

Year in Which Losses Were Incurred	Cumulative Net Amounts Paid				
	1 2018	2 2019	3 2020	4 2021	5 2022
1. Prior.....					
2. 2018.....					
3. 2019.....					
4. 2020.....		XXX			
5. 2021.....	XXX	XXX	XXX		
6. 2022.....	XXX	XXX	XXX	XXX	

Section B – Incurred Health Claims

Year in Which Losses Were Incurred	Sum of Cumulative Net Amount Paid and Claim Liability, Claim Reserve and Medical Incentive Pool and Bonuses Outstanding at End of Year				
	1 2018	2 2019	3 2020	4 2021	5 2022
1. Prior.....					
2. 2018.....					
3. 2019.....					
4. 2020.....		XXX			
5. 2021.....	XXX	XXX	XXX		
6. 2022.....	XXX	XXX	XXX	XXX	

Section C – Incurred Year Health Claims and Claims Adjustment Expense Ratio

Years in which Premiums were Earned and Claims were Incurred	1 Premiums Earned	2 Claims Payments	3 Claim Adjustment Expense Payments	4 (Col. 3/2) Percent	5 Claim and Claim Adjustment Expense Payments (Col. 2+3)	6 (Col. 5/1) Percent	7 Claims Unpaid	8 Unpaid Claims Adjustment Expenses	9 Total Claims and Claims Adjustment Expense Incurred (Col. 5+7+8)	10 (Col. 9/1) Percent
1. 2018.....										
2. 2019.....										
3. 2020.....										
4. 2021.....										
5. 2022.....										

12.MS

UNDERWRITING AND INVESTMENT EXHIBIT
 PART 2C – DEVELOPMENT OF PAID AND INCURRED HEALTH CLAIMS
 (\$000 Omitted)
 DENTAL ONLY

Section A – Paid Health Claims

Year in Which Losses Were Incurred	Cumulative Net Amounts Paid				
	1 2018	2 2019	3 2020	4 2021	5 2022
1. Prior.....					
2. 2018.....					
3. 2019.....					
4. 2020.....		XXX			
5. 2021.....	XXX	XXX	XXX		
6. 2022.....	XXX	XXX	XXX	XXX	

Section B – Incurred Health Claims

Year in Which Losses Were Incurred	Sum of Cumulative Net Amount Paid and Claim Liability, Claim Reserve and Medical Incentive Pool and Bonuses Outstanding at End of Year				
	1 2018	2 2019	3 2020	4 2021	5 2022
1. Prior.....					
2. 2018.....					
3. 2019.....					
4. 2020.....		XXX			
5. 2021.....	XXX	XXX	XXX		
6. 2022.....	XXX	XXX	XXX	XXX	

Section C – Incurred Year Health Claims and Claims Adjustment Expense Ratio

Years in which Premiums were Earned and Claims were Incurred	1 Premiums Earned	2 Claims Payments	3 Claim Adjustment Expense Payments	4 (Col. 3/2) Percent	5 Claim and Claim Adjustment Expense Payments (Col. 2+3)	6 (Col. 5/1) Percent	7 Claims Unpaid	8 Unpaid Claims Adjustment Expenses	9 Total Claims and Claims Adjustment Expense Incurred (Col. 5+7+8)	10 (Col. 9/1) Percent
1. 2018.....										
2. 2019.....										
3. 2020.....										
4. 2021.....										
5. 2022.....										

12.D0

UNDERWRITING AND INVESTMENT EXHIBIT
 PART 2C – DEVELOPMENT OF PAID AND INCURRED HEALTH CLAIMS
 (\$000 Omitted)
 VISION ONLY

Section A – Paid Health Claims

Year in Which Losses Were Incurred	Cumulative Net Amounts Paid				
	1 2018	2 2019	3 2020	4 2021	5 2022
1. Prior.....	NONE				
2. 2018.....					
3. 2019.....					
4. 2020.....			XXX		
5. 2021.....			XXX	XXX	
6. 2022.....			XXX	XXX	XXX

Section B – Incurred Health Claims

Year in Which Losses Were Incurred	Sum of Cumulative Net Amount Paid and Claim Liability, Claim Reserve and Medical Incentive Pool and Bonuses Outstanding at End of Year				
	1 2018	2 2019	3 2020	4 2021	5 2022
1. Prior.....	NONE				
2. 2018.....					
3. 2019.....					
4. 2020.....			XXX		
5. 2021.....			XXX	XXX	
6. 2022.....			XXX	XXX	XXX

Section C – Incurred Year Health Claims and Claims Adjustment Expense Ratio

Years in which Premiums were Earned and Claims were Incurred	1	2	3	4	5	6	7	8	9	10
	Premiums Earned	Claims Payments	Claim Adjustment Expense Payments	(Col. 3/2) Percent	Claim and Claim Adjustment Expense Payments (Col. 2+3)	(Col. 5/1) Percent	Claims Unpaid	Unpaid Claims Adjustment Expenses	Total Claims and Claims Adjustment Expense Incurred (Col. 5+7+8)	(Col. 9/1) Percent
1. 2018.....	NONE									
2. 2019.....										
3. 2020.....										
4. 2021.....										
5. 2022.....										

UNDERWRITING AND INVESTMENT EXHIBIT
 PART 2C – DEVELOPMENT OF PAID AND INCURRED HEALTH CLAIMS
 (\$000 Omitted)
 FEDERAL EMPLOYEES HEALTH BENEFITS PLAN

Section A – Paid Health Claims

Year in Which Losses Were Incurred	Cumulative Net Amounts Paid				
	1 2018	2 2019	3 2020	4 2021	5 2022
1. Prior.....					
2. 2018.....					
3. 2019.....					
4. 2020.....		XXX			
5. 2021.....	XXX	XXX	XXX		
6. 2022.....	XXX	XXX	XXX	XXX	

Section B – Incurred Health Claims

Year in Which Losses Were Incurred	Sum of Cumulative Net Amount Paid and Claim Liability, Claim Reserve and Medical Incentive Pool and Bonuses Outstanding at End of Year				
	1 2018	2 2019	3 2020	4 2021	5 2022
1. Prior.....					
2. 2018.....					
3. 2019.....					
4. 2020.....		XXX			
5. 2021.....	XXX	XXX	XXX		
6. 2022.....	XXX	XXX	XXX	XXX	

Section C – Incurred Year Health Claims and Claims Adjustment Expense Ratio

Years in which Premiums were Earned and Claims were Incurred	1 Premiums Earned	2 Claims Payments	3 Claim Adjustment Expense Payments	4 (Col. 3/2) Percent	5 Claim and Claim Adjustment Expense Payments (Col. 2+3)	6 (Col. 5/1) Percent	7 Claims Unpaid	8 Unpaid Claims Adjustment Expenses	9 Total Claims and Claims Adjustment Expense Incurred (Col. 5+7+8)	10 (Col. 9/1) Percent
1. 2018.....										
2. 2019.....										
3. 2020.....										
4. 2021.....										
5. 2022.....										

12.FE

UNDERWRITING AND INVESTMENT EXHIBIT
 PART 2C – DEVELOPMENT OF PAID AND INCURRED HEALTH CLAIMS
 (\$000 Omitted)
 TITLE XVIII MEDICARE

Section A – Paid Health Claims

Year in Which Losses Were Incurred	Cumulative Net Amounts Paid				
	1 2018	2 2019	3 2020	4 2021	5 2022
1. Prior.....					
2. 2018.....					
3. 2019.....	XXX				
4. 2020.....	XXX	XXX	7,115	8,574	8,829
5. 2021.....	XXX	XXX	XXX	11,973	15,347
6. 2022.....	XXX	XXX	XXX	XXX	17,409

Section B – Incurred Health Claims

Year in Which Losses Were Incurred	Sum of Cumulative Net Amount Paid and Claim Liability, Claim Reserve and Medical Incentive Pool and Bonuses Outstanding at End of Year				
	1 2018	2 2019	3 2020	4 2021	5 2022
1. Prior.....					
2. 2018.....					
3. 2019.....	XXX				
4. 2020.....	XXX	XXX	9,978	9,179	8,829
5. 2021.....	XXX	XXX	XXX	15,822	15,867
6. 2022.....	XXX	XXX	XXX	XXX	22,238

Section C – Incurred Year Health Claims and Claims Adjustment Expense Ratio

Years in which Premiums were Earned and Claims were Incurred	1	2	3	4	5	6	7	8	9	10
	Premiums Earned	Claims Payments	Claim Adjustment Expense Payments	(Col. 3/2) Percent	Claim and Claim Adjustment Expense Payments (Col. 2+3)	(Col. 5/1) Percent	Claims Unpaid	Unpaid Claims Adjustment Expenses	Total Claims and Claims Adjustment Expense Incurred (Col. 5+7+8)	(Col. 9/1) Percent
1. 2018.....										
2. 2019.....										
3. 2020.....	10,155	8,829	485	5.493	9,314	91.718	–		9,314	91.718
4. 2021.....	18,811	15,347	1,166	7.598	16,513	87.784	520		17,033	90.548
5. 2022.....	27,795	17,409	1,539	8.840	18,948	68.171	4,829	30	23,807	85.652

UNDERWRITING AND INVESTMENT EXHIBIT
 PART 2C – DEVELOPMENT OF PAID AND INCURRED HEALTH CLAIMS
 (\$000 Omitted)
 TITLE XIX MEDICAID

Section A – Paid Health Claims

Year in Which Losses Were Incurred	Cumulative Net Amounts Paid				
	1 2018	2 2019	3 2020	4 2021	5 2022
1. Prior.....					
2. 2018.....					
3. 2019.....					
4. 2020.....		XXX			
5. 2021.....	XXX	XXX	XXX		
6. 2022.....	XXX	XXX	XXX	XXX	

Section B – Incurred Health Claims

Year in Which Losses Were Incurred	Sum of Cumulative Net Amount Paid and Claim Liability, Claim Reserve and Medical Incentive Pool and Bonuses Outstanding at End of Year				
	1 2018	2 2019	3 2020	4 2021	5 2022
1. Prior.....					
2. 2018.....					
3. 2019.....					
4. 2020.....		XXX			
5. 2021.....	XXX	XXX	XXX		
6. 2022.....	XXX	XXX	XXX	XXX	

Section C – Incurred Year Health Claims and Claims Adjustment Expense Ratio

Years in which Premiums were Earned and Claims were Incurred	1 Premiums Earned	2 Claims Payments	3 Claim Adjustment Expense Payments	4 (Col. 3/2) Percent	5 Claim and Claim Adjustment Expense Payments (Col. 2+3)	6 (Col. 5/1) Percent	7 Claims Unpaid	8 Unpaid Claims Adjustment Expenses	9 Total Claims and Claims Adjustment Expense Incurred (Col. 5+7+8)	10 (Col. 9/1) Percent
1. 2018.....										
2. 2019.....										
3. 2020.....										
4. 2021.....										
5. 2022.....										

12 XI

UNDERWRITING AND INVESTMENT EXHIBIT
 PART 2C – DEVELOPMENT OF PAID AND INCURRED HEALTH CLAIMS
 (\$000 Omitted)
 OTHER HEALTH

Section A – Paid Health Claims

Year in Which Losses Were Incurred	Cumulative Net Amounts Paid				
	1 2018	2 2019	3 2020	4 2021	5 2022
1. Prior.....	NONE				
2. 2018.....					
3. 2019.....					
4. 2020.....			XXX		
5. 2021.....			XXX	XXX	
6. 2022.....			XXX	XXX	XXX

Section B – Incurred Health Claims

Year in Which Losses Were Incurred	Sum of Cumulative Net Amount Paid and Claim Liability, Claim Reserve and Medical Incentive Pool and Bonuses Outstanding at End of Year				
	1 2018	2 2019	3 2020	4 2021	5 2022
1. Prior.....	NONE				
2. 2018.....					
3. 2019.....					
4. 2020.....			XXX		
5. 2021.....			XXX	XXX	
6. 2022.....			XXX	XXX	XXX

Section C – Incurred Year Health Claims and Claims Adjustment Expense Ratio

Years in which Premiums were Earned and Claims were Incurred	1 Premiums Earned	2 Claims Payments	3 Claim Adjustment Expense Payments	4 (Col. 3/2) Percent	5 Claim and Claim Adjustment Expense Payments (Col. 2+3)	6 (Col. 5/1) Percent	7 Claims Unpaid	8 Unpaid Claims Adjustment Expenses	9 Total Claims and Claims Adjustment Expense Incurred (Col. 5+7+8)	10 (Col. 9/1) Percent
1. 2018.....	NONE									
2. 2019.....										
3. 2020.....										
4. 2021.....										
5. 2022.....										

12.01

UNDERWRITING AND INVESTMENT EXHIBIT

PART 2D – AGGREGATE RESERVE FOR ACCIDENT AND HEALTH CONTRACTS ONLY

	1 Total	Comprehensive (Hospital & Medical)		4 Medicare Supplement	5 Dental Only	6 Vision Only	7 Federal Employees Health Benefits Plan	8 Title XVIII Medicare	9 Title XIX Medicaid	10 Credit A&H	11 Disability Income	12 Long-Term Care	13 Other
		2 Individual	3 Group										
1. Unearned premium reserves													
2. Additional policy reserves (a)													
3. Reserve for future contingent benefits													
4. Reserve for rate credits or experience rating refunds (including \$ for investment income)													
5. Aggregate write-ins for other policy reserves													
6. Totals (gross)													
7. Reinsurance ceded													
8. Totals (Net) (Page 3, Line 4)													
9. Present value of amounts not yet due on claims													
10. Reserve for future contingent benefits													
11. Aggregate write-ins for other claim reserves													
12. Totals (gross)													
13. Reinsurance ceded													
14. Totals (Net) (Page 3, Line 7)													
NONE													
Details of Write-Ins													
0501.													
0502.													
0503.													
0598. Summary of remaining write-ins for Line 5 from overflow page													
0599. Totals (Lines 0501 through 0503 plus 0598) (Line 5 above)													
1101.													
1102.													
1103.													
1198. Summary of remaining write-ins for Line 11 from overflow page													
1199. Totals (Lines 1101 through 1103 plus 1198) (Line 11 above)													

(a) Includes \$ premium deficiency reserve.

UNDERWRITING AND INVESTMENT EXHIBIT
PART 3 – ANALYSIS OF EXPENSES

	Claim Adjustment Expenses		3 General Administrative Expenses	4 Investment Expenses	5 Total
	1 Cost Containment Expenses	2 Other Claim Adjustment Expenses			
1. Rent (\$ for occupancy of own building)			16,200		16,200
2. Salaries, wages and other benefits	612,864	306,432	2,145,024		3,064,320
3. Commissions (less \$ ceded plus \$ assumed)			93,413		93,413
4. Legal fees and expenses			10,913		10,913
5. Certifications and accreditation fees					
6. Auditing, actuarial and other consulting services			189,170		189,170
7. Traveling expenses	9,483	4,741	33,190		47,414
8. Marketing and advertising	5,498	2,749	19,243		27,490
9. Postage, express and telephone	6	3	21		30
10. Printing and office supplies	2,174	1,087	7,610		10,871
11. Occupancy, depreciation and amortization					
12. Equipment					
13. Cost or depreciation of EDP equipment and software					
14. Outsourced services including EDP, claims, and other services	705,990	174,426	361,006		1,241,422
15. Boards, bureaus and association fees					
16. Insurance, except on real estate					
17. Collection and bank service charges			28,389		28,389
18. Group service and administration fees	12,262	6,131	82,913		101,306
19. Reimbursements by uninsured plans					
20. Reimbursements from fiscal intermediaries					
21. Real estate expenses					
22. Real estate taxes					
23. Taxes, licenses and fees:					
23.1 State and local insurance taxes					
23.2 State premium taxes					
23.3 Regulatory authority licenses and fees			6,652		6,652
23.4 Payroll taxes			49,661		49,661
23.5 Other (excluding federal income and real estate taxes)					
24. Investment expenses not included elsewhere				5,579	5,579
25. Aggregate write-ins for expenses					
26. Total expenses incurred (Lines 1 to 25)	1,348,277	495,569	3,043,405	5,579	(a) 4,892,830
27. Less expenses unpaid December 31, current year		30,482	7,704		38,186
28. Add expenses unpaid December 31, prior year		37,818	17,548		55,366
29. Amounts receivable relating to uninsured plans, prior year					
30. Amounts receivable relating to uninsured plans, current year					
31. Total expenses paid (Lines 26 minus 27 plus 28 minus 29 plus 30)	1,348,277	502,905	3,053,249	5,579	4,910,010
Details of Write-Ins					
2501.					
2502.					
2503.					
2598. Summary of remaining write-ins for Line 25 from overflow page					
2599. Totals (Lines 2501 through 2503 plus 2598) (Line 25 above)					

(a) Includes management fees of \$ 2,062,797 to affiliates and \$ 711,923 to non-affiliates.

EXHIBIT OF NET INVESTMENT INCOME

	1	2
	Collected During Year	Earned During Year
1. U.S. Government bonds	(a) 3,265	3,577
1.1 Bonds exempt from U.S. tax	(a)	
1.2 Other bonds (unaffiliated)	(a) 77,520	98,535
1.3 Bonds of affiliates	(a)	
2.1 Preferred stocks (unaffiliated)	(b)	
2.11 Preferred stocks of affiliates	(b)	
2.2 Common stocks (unaffiliated)		
2.21 Common stocks of affiliates		
3. Mortgage loans	(c)	
4. Real estate	(d)	
5. Contract loans		
6. Cash, cash equivalents and short-term investments	(e) 15,503	15,503
7. Derivative instruments	(f)	
8. Other invested assets		
9. Aggregate write-ins for investment income		
10. Total gross investment income	96,288	117,615
11. Investment expenses		(g) 5,579
12. Investment taxes, licenses and fees, excluding federal income taxes		(g)
13. Interest expense		(h)
14. Depreciation on real estate and other invested assets		(i)
15. Aggregate write-ins for deductions from investment income		
16. Total deductions (Lines 11 through 15)		5,579
17. Net investment income (Line 10 minus Line 16)		112,036
Details of Write-Ins		
0901.		
0902.		
0903.		
0998. Summary of remaining write-ins for Line 9 from overflow page		
0999. Totals (Lines 0901 through 0903 plus 0998) (Line 9 above)		
1501.		
1502.		
1503.		
1598. Summary of remaining write-ins for Line 15 from overflow page		
1599. Totals (Lines 1501 through 1503 plus 1598) (Line 15 above)		

(a) Includes \$ 13,546 accrual of discount less \$ 7,540 amortization of premium and less \$ 4,590 paid for accrued interest on purchases.

(b) Includes \$ accrual of discount less \$ amortization of premium and less \$ paid for accrued dividends on purchases.

(c) Includes \$ accrual of discount less \$ amortization of premium and less \$ paid for accrued interest on purchases.

(d) Includes \$ for company's occupancy of its own buildings; and excludes \$ interest on encumbrances.

(e) Includes \$ 641 accrual of discount less \$ amortization of premium and less \$ paid for accrued interest on purchases.

(f) Includes \$ accrual of discount less \$ amortization of premium.

(g) Includes \$ investment expenses and \$ investment taxes, licenses and fees, excluding federal income taxes, attributable to segregated and Separate Accounts.

(h) Includes \$ interest on surplus notes and \$ interest on capital notes.

(i) Includes \$ depreciation on real estate and \$ depreciation on other invested assets.

EXHIBIT OF CAPITAL GAINS (LOSSES)

	1	2	3	4	5
	Realized Gain (Loss) On Sales or Maturity	Other Realized Adjustments	Total Realized Capital Gain (Loss) (Columns 1 + 2)	Change in Unrealized Capital Gain (Loss)	Change in Unrealized Foreign Exchange Capital Gain (Loss)
1. U.S. Government bonds					
1.1 Bonds exempt from U.S. tax					
1.2 Other bonds (unaffiliated)					
1.3 Bonds of affiliates					
2.1 Preferred stocks (unaffiliated)					
2.11 Preferred stocks of affiliates					
2.2 Common stocks (unaffiliated)					
2.21 Common stocks of affiliates					
3. Mortgage loans					
4. Real estate					
5. Contract loans					
6. Cash, cash equivalents and short-term investments	(556)		(556)		
7. Derivative instruments					
8. Other invested assets					
9. Aggregate write-ins for capital gains (losses)					
10. Total capital gains (losses)	(556)		(556)		
Details of Write-Ins					
0901.					
0902.					
0903.					
0998. Summary of remaining write-ins for Line 9 from overflow page					
0999. Totals (Lines 0901 through 0903 plus 0998) (Line 9 above)					

EXHIBIT OF NONADMITTED ASSETS

	1	2	3
	Current Year Total Nonadmitted Assets	Prior Year Total Nonadmitted Assets	Change in Total Nonadmitted Assets (Col. 2 – Col. 1)
1. Bonds (Schedule D).....			
2. Stocks (Schedule D):			
2.1 Preferred stocks.....			
2.2 Common stocks.....			
3. Mortgage loans on real estate (Schedule B):			
3.1 First liens.....			
3.2 Other than first liens.....			
4. Real estate (Schedule A):			
4.1 Properties occupied by the company.....			
4.2 Properties held for the production of income.....			
4.3 Properties held for sale.....			
5. Cash (Schedule E-Part 1), cash equivalents (Schedule E-Part 2) and short-term investments (Schedule DA).....			
6. Contract loans.....			
7. Derivatives (Schedule DB).....			
8. Other invested assets (Schedule BA).....			
9. Receivables for securities.....			
10. Securities lending reinvested collateral assets (Schedule DL).....			
11. Aggregate write-ins for invested assets.....			
12. Subtotals, cash and invested assets (Lines 1 to 11).....			
13. Title plants (for Title insurers only).....			
14. Investment income due and accrued.....			
15. Premiums and considerations:			
15.1 Uncollected premiums and agents' balances in the course of collection.....			
15.2 Deferred premiums, agents' balances and installments booked but deferred and not yet due.....			
15.3 Accrued retrospective premiums and contracts subject to redetermination.....			
16. Reinsurance:			
16.1 Amounts recoverable from reinsurers.....			
16.2 Funds held by or deposited with reinsured companies.....			
16.3 Other amounts receivable under reinsurance contracts.....			
17. Amounts receivable relating to uninsured plans.....			
18.1 Current federal and foreign income tax recoverable and interest thereon.....			
18.2 Net deferred tax asset.....	111,314	123,682	12,368
19. Guaranty funds receivable or on deposit.....			
20. Electronic data processing equipment and software.....			
21. Furniture and equipment, including health care delivery assets.....			
22. Net adjustment in assets and liabilities due to foreign exchange rates.....			
23. Receivables from parent, subsidiaries and affiliates.....			
24. Health care and other amounts receivable.....	51,031	157,944	106,913
25. Aggregate write-ins for other-than-invested assets.....			
26. Total assets excluding Separate Accounts, Segregated Accounts and Protected Cell Accounts (Lines 12 to 25).....	162,345	281,626	119,281
27. From Separate Accounts, Segregated Accounts and Protected Cell Accounts.....			
28. Total (Lines 26 and 27).....	162,345	281,626	119,281
Details of Write-Ins			
1101.....			
1102.....			
1103.....			
1198. Summary of remaining write-ins for Line 11 from overflow page.....			
1199. Totals (Lines 1101 through 1103 plus 1198) (Line 11 above).....			
2501.....			
2502.....			
2503.....			
2598. Summary of remaining write-ins for Line 25 from overflow page.....			
2599. Totals (Lines 2501 through 2503 plus 2598) (Line 25 above).....			

EXHIBIT 1 – ENROLLMENT BY PRODUCT TYPE FOR HEALTH BUSINESS ONLY

Source of Enrollment	Total Members at End of					6 Current Year Member Months
	1 Prior Year	2 First Quarter	3 Second Quarter	4 Third Quarter	5 Current Year	
1. Health Maintenance Organizations.....	752					
2. Provider Service Organizations.....						
3. Preferred Provider Organizations.....		788	844	872	863	9,967
4. Point of Service.....						
5. Indemnity Only.....						
6. Aggregate write-ins for other lines of business.....						
7. Total.....	752	788	844	872	863	9,967
Details of Write-Ins						
0601.....						
0602.....						
0603.....						
0698. Summary of remaining write-ins for Line 6 from overflow page.....						
0699. Totals (Lines 0601 through 0603 plus 0698) (Line 6 above).....						

Notes to the Financial Statements

1. Summary of Significant Accounting Policies and Going Concern

A. Accounting Practices

The financial Statements of the Longevity Plan of New Jersey, Inc (LPNJ or the Company) are presented on the basis of accounting practices prescribed or permitted by the New Jersey Department of Banking & Insurance (the Department).

The Department recognizes Statutory Accounting practices prescribed or permitted by the State of New Jersey for determining and reporting the financial conditions and results of the operation of the insurance company and for determining its solvency under the New Jersey Law. The Department has adopted the National Association of Insurance Commissioners' (NAIC) Accounting Practices and Procedures Manual as its statutory accounting principle (SAP) basis. Prescribed accounting practices are those practices which are incorporated directly or by reference to state laws, regulations and general administrative rules applicable to all insurance enterprises domiciled in a particular state. Permitted accounting practices include deviation from NAIC SAP and state prescribed accounting practices specifically requested by an insurer and granted by the Insurance Division.

The Department has approved no permitted practices for the Company that differ from NAIC SAP or state prescribed accounting practices. A reconciliation of the Company's net income and capital surplus between NAIC SAP and practices prescribed and permitted by the department are shown below:

	SSAP #	F/S Page	F/S Line #	2022	2021
Net Income					
(1) State basis (Page 4, Line 32, Columns 2 & 3)	XXX	XXX	XXX	\$ 1,086,224	\$ 759,007
(2) State prescribed practices that are an increase / (decrease) from NAIC SAP:					
(3) State permitted practices that are an increase / (decrease) from NAIC SAP:					
(4) NAIC SAP (1-2-3=4)	XXX	XXX	XXX	<u>\$ 1,086,224</u>	<u>\$ 759,007</u>
Surplus					
(5) State basis (Page 3, Line 33, Columns 3 & 4)	XXX	XXX	XXX	\$ 5,956,721	\$ 5,001,775
(6) State prescribed practices that are an increase / (decrease) from NAIC SAP:					
(7) State permitted practices that are an increase / (decrease) from NAIC SAP:					
(8) NAIC SAP (5-6-7=8)	XXX	XXX	XXX	<u>\$ 5,956,721</u>	<u>\$ 5,001,775</u>

B. Use of Estimates in the Preparation of the Financial Statements

The preparation of the financial statements in conformity with Statutory Accounting Principles requires management to make estimates and assumptions that affect the reported amounts of assets and liabilities. It also requires disclosure of contingent assets and liabilities at the date of the financial statements and the reported amounts of revenue and expenses during the period. Actual results could differ from those estimates.

C. Accounting Policy

Longevity Plan of New Jersey, Inc is a Medicare PPO that provides medical coverage to members who qualify under the Federal Medicare guidelines. Health premiums received are recognized as income in the month of coverage. Premiums collected are recognized as revenue during the months of coverage. Medical Loss Ratio (MLR) rebates are mandated by the Public Health Service Act. Rebates are accrued if the ratio of medical losses to premiums is below the specified minimum of 85% for Medicare Advantage Plans. Premiums are reported net of reinsurance and MLR rebates.

Net investment income earned consists primarily of interest less investment related expenses. Interest is recognized on an accrual basis. Net realized capital gains (losses) are recognized on a specific identification basis when securities are sold, redeemed or otherwise disposed. Realized capital losses include write-downs for impairments considered to be other than temporary. Expenses for management and administration of the organization, including acquisition costs such as marketing, are charged to operations as incurred.

In addition, the Company uses the following accounting policies:

- (1) Short-term investments are stated at amortized cost using the scientific interest method.
- (2) Bonds are stated at amortized cost using the scientific interest method.
- (3) Common stocks - Not Applicable
- (4) Preferred stocks - Not Applicable
- (5) Mortgage loans - Not Applicable
- (6) Loan-backed securities - Not Applicable
- (7) Investments in subsidiaries, controlled and affiliated entities - Not Applicable
- (8) Investments in joint ventures, partnerships and limited liability companies - Not Applicable
- (9) Derivatives - Not Applicable
- (10) Based upon guidance in SSAP No. 54, a premium deficiency reserve (PDR) is recorded when the expected claims payments, incurred claims costs, claims adjustment expense, and administrative expense will exceed premium.
- (11) Claim reserves are estimated based on five key service categories (i.e., inpatient, SNF, outpatient, emergency room, and therapy). Inpatient estimates are based on a review of open authorizations priced at a reasonable cost per service. SNF, Therapy, Outpatient services and emergency room services IBNR estimates are established based on a run-rate historical cost per member for similar services at comparable plans. Management review is used to ensure the final incurred claims approximate a reasonable final incurred amount for each service. It is important to note that IBNR estimates are subject to favorable or unfavorable changes until sufficient claim experience is developed in the plan to minimize variations in estimation. Loss adjustment expense is typically estimated at 1% of total IBNR reserves and is generally reserved prior to year-end.
- (12) Changes in capitalization policy - Not Applicable

Notes to the Financial Statements

1. Summary of Significant Accounting Policies and Going Concern (Continued)

(13) Navitus Health Solutions and Express Scripts, Inc. collect rebates pursuant to contracts with pharmaceutical manufacturers and that are directly attributable to the Formulary and Covered product utilization. LPNJ's share of rebates on covered products is in proportion to its pharmacy utilization. On a quarterly basis, Navitus and Express Scripts, Inc. pay the LPNJ's rebates on a pass-through basis and includes 100% of rebates collected by Navitus and Express Scripts, Inc. All rebates are paid to LPNJ within 30 business days following the end of each quarter in which the rebates are received.

D. Going Concern

After evaluating the entity's ability to continue as a going concern, management was not aware of any conditions or events which raised substantial doubts concerning the entity's ability to continue as a going concern as of the date of the filing of this statement.

2. Accounting Changes and Corrections of Errors - Not Applicable

3. Business Combinations and Goodwill

- A. Statutory Purchase Method - Not Applicable
- B. Statutory Merger - Not Applicable
- C. Assumption Reinsurance - Not Applicable
- D. Impairment Loss - Not Applicable
- E. Subcomponents and Calculation of Adjusted Surplus and Total Admitted Goodwill - Not Applicable

4. Discontinued Operations

- A. Discontinued Operation Disposed of or Classified as Held for Sale - Not Applicable
- B. Change in Plan of Sale of Discontinued Operation - Not Applicable
- C. Nature of Any Significant Continuing Involvement with Discontinued Operations After Disposal - Not Applicable
- D. Equity Interest Retained in the Discontinued Operation After Disposal - Not Applicable

5. Investments

- A. Mortgage Loans, including Mezzanine Real Estate Loans - Not Applicable
- B. Debt Restructuring - Not Applicable
- C. Reverse Mortgages - Not Applicable
- D. Loan-Backed Securities - Not Applicable
- E. Dollar Repurchase Agreements and/or Securities Lending Transactions - Not Applicable
- F. Repurchase Agreements Transactions Accounted for as Secured Borrowing - Not Applicable
- G. Reverse Repurchase Agreements Transactions Accounted for as Secured Borrowing - Not Applicable
- H. Repurchase Agreements Transactions Accounted for as a Sale - Not Applicable
- I. Reverse Repurchase Agreements Transactions Accounted for as a Sale - Not Applicable
- J. Real Estate - Not Applicable
- K. Low-Income Housing Tax Credits (LIHTC) - Not Applicable
- L. Restricted Assets

(1) Restricted assets (including pledged)

Restricted Asset Category	(1) Total Gross (Admitted & Nonadmitted) Restricted from Current Year	(2) Total Gross (Admitted & Nonadmitted) Restricted From Prior Year	(3) Increase / (Decrease) (1 - 2)	(4) Total Current Year Nonadmitted Restricted	(5) Total Current Year Admitted Restricted (1 - 4)	(6) Gross (Admitted & Nonadmitted) Restricted to Total Assets	(7) Admitted Restricted to Total Admitted Assets
a. Subject to contractual obligation for which liability is not shown	\$	\$	\$	\$	\$	%	%
b. Collateral held under security lending agreements							
c. Subject to repurchase agreements							
d. Subject to reverse repurchase agreements							
e. Subject to dollar repurchase agreements							
f. Subject to dollar reverse repurchase agreements							
g. Placed under option contracts							
h. Letter stock or securities restricted as to sale - excluding FHLB capital stock							
i. FHLB capital stock							
j. On deposit with states	102,038	102,005	33		102,038	0.732	0.741
k. On deposit with other regulatory bodies							
l. Pledged as collateral to FHLB (including assets backing funding agreements)							
m. Pledged as collateral not captured in other categories							
n. Other restricted assets							
o. Total restricted assets (Sum of a through n)	\$ 102,038	\$ 102,005	\$ 33	\$	\$ 102,038	0.732 %	0.741 %

(2) Detail of assets pledged as collateral not captured in other categories (contracts that share similar characteristics, such as reinsurance and derivatives, are reported in the aggregate) - Not Applicable

Notes to the Financial Statements

5. Investments (Continued)

- (3) Detail of other restricted assets (contracts that share similar characteristics, such as reinsurance and derivatives, are reported in the aggregate) - Not Applicable
- (4) Collateral received and reflected as assets within the reporting entity's financial statements - Not Applicable
- M. Working Capital Finance Investments - Not Applicable
- N. Offsetting and Netting of Assets and Liabilities - Not Applicable
- O. 5GI Securities - Not Applicable
- P. Short Sales - Not Applicable
- Q. Prepayment Penalty and Acceleration Fees - Not Applicable
- R. Reporting Entity's Share of Cash Pool by Asset type - Not Applicable

6. Joint Ventures, Partnerships and Limited Liability Companies

- A. Investments in Joint Ventures, Partnerships or Limited Liability Companies that Exceed 10% of Admitted Assets - Not Applicable
- B. Impaired Investments in Joint Ventures, Partnerships and Limited Liability Companies - Not Applicable

7. Investment Income

- A. Due and Accrued Income Excluded from Surplus
Any investment income due and accrued with amounts that are over 90 days past due are nonadmitted and excluded from surplus.
- B. Total Amount Excluded
The Company had no investment income due and accrued with any amounts that are over 90 days past due.

8. Derivative Instruments

- A. Derivatives under SSAP No. 86 - Derivatives - Not Applicable
- B. Derivatives under SSAP No. 108 - Derivative Hedging Variable Annuity Guarantees (Life/Fraternal Only) - Not Applicable

9. Income Taxes

- A. Components of the Net Deferred Tax Asset/(Liability)
(1) Change between years by tax character

	2022			2021			Change		
	(1)	(2)	(3)	(4)	(5)	(6)	(7)	(8)	(9)
	Ordinary	Capital	Total (Col 1+2)	Ordinary	Capital	Total (Col 4+5)	Ordinary (Col 1-4)	Capital (Col 2-5)	Total (Col 7+8)
(a) Gross deferred tax assets	\$ 241,407	\$	\$ 241,407	\$ 491,966	\$	\$ 491,966	\$ (250,559)	\$	\$ (250,559)
(b) Statutory valuation allowance adjustments									
(c) Adjusted gross deferred tax assets (1a - 1b)	241,407		241,407	491,966		491,966	(250,559)		(250,559)
(d) Deferred tax assets nonadmitted	111,314		111,314	123,682		123,682	(12,368)		(12,368)
(e) Subtotal net admitted deferred tax asset (1c - 1d)	\$ 130,093	\$	\$ 130,093	\$ 368,284	\$	\$ 368,284	\$ (238,191)	\$	\$ (238,191)
(f) Deferred tax liabilities									
(g) Net admitted deferred tax asset/(net deferred tax liability) (1e - 1f)	\$ 130,093	\$	\$ 130,093	\$ 368,284	\$	\$ 368,284	\$ (238,191)	\$	\$ (238,191)

(2) Admission calculation components SSAP No. 101

	2022			2021			Change		
	(1)	(2)	(3)	(4)	(5)	(6)	(7)	(8)	(9)
	Ordinary	Capital	Total (Col 1+2)	Ordinary	Capital	Total (Col 4+5)	Ordinary (Col 1-4)	Capital (Col 2-5)	Total (Col 7+8)
(a) Federal income taxes paid in prior years recoverable through loss carrybacks	\$	\$	\$	\$	\$	\$	\$	\$	\$
(b) Adjusted gross deferred tax assets expected to be realized (excluding the amount of deferred tax assets from 2(a) above) after application of the threshold limitation (lesser of 2(b)1 and 2(b)2 below)	130,093		130,093	368,284		368,284	(238,191)		(238,191)
1. Adjusted gross deferred tax assets expected to be realized following the balance sheet date	130,093		130,093	368,284		368,284	(238,191)		(238,191)
2. Adjusted gross deferred tax assets allowed per limitation threshold	XXX	XXX	130,093	XXX	XXX	368,284	XXX	XXX	(238,191)
(c) Adjusted gross deferred tax assets (excluding the amount of deferred tax assets from 2(a) and 2(b) above) offset by gross deferred tax liabilities									
(d) Deferred tax assets admitted as the result of application of SSAP No. 101									
Total 2(a) + 2(b) + 2(c))	\$ 130,093	\$	\$ 130,093	\$ 368,284	\$	\$ 368,284	\$ (238,191)	\$	\$ (238,191)

Notes to the Financial Statements

9. Income Taxes (Continued)

(3) Ratio used as basis of admissibility

	2022	2021
(a) Ratio percentage used to determine recovery period and threshold limitation amount	512.000 %	596.000 %
(b) Amount of adjusted capital and surplus used to determine recovery period and threshold limitation in 2(b)2 above	\$ 5,826,628	\$ 4,633,491

(4) Impact of tax-planning strategies

(a) Determination of adjusted gross deferred tax assets and net admitted deferred tax assets, by tax character as a percentage

	2022		2021		Change	
	(1)	(2)	(3)	(4)	(5)	(6)
	Ordinary	Capital	Ordinary	Capital	Ordinary (Col. 1-3)	Capital (Col. 2-4)
1. Adjusted gross DTAs amount from Note 9A1(c)	\$ 241,407	\$	\$ 491,966	\$	\$ (250,559)	\$
2. Percentage of adjusted gross DTAs by tax character attributable to the impact of tax planning strategies	%	%	%	%	%	%
3. Net admitted adjusted gross DTAs amount from Note 9A1(e)	\$ 130,093	\$	\$ 368,284	\$	\$ (238,191)	\$
4. Percentage of net admitted adjusted gross DTAs by tax character admitted because of the impact of tax planning strategies	%	%	%	%	%	%

(b) Use of reinsurance-related tax-planning strategies

Does the company's tax-planning strategies include the use of reinsurance? NO

B. Regarding Deferred Tax Liabilities That Are Not Recognized - Not Applicable

C. Major Components of Current Income Taxes Incurred

	(1) 2022	(2) 2021	(3) Change (1-2)
Current income taxes incurred consist of the following major components:			
1. Current Income Tax			
(a) Federal	\$	\$	\$
(b) Foreign	\$	\$	\$
(c) Subtotal (1a+1b)	\$	\$	\$
(d) Federal income tax on net capital gains	\$	\$	\$
(e) Utilization of capital loss carry-forwards	\$	\$	\$
(f) Other	\$	\$	\$
(g) Federal and foreign income taxes incurred (1c+1d+1e+1f)	\$	\$	\$

Notes to the Financial Statements

9. Income Taxes (Continued)

	(1) 2022	(2) 2021	(3) Change (1-2)
2. Deferred Tax Assets			
(a) Ordinary			
(1) Discounting of unpaid losses	\$ 10,189	\$ 12,469	\$ (2,280)
(2) Unearned premium reserve	15,361	7,233	8,128
(3) Policyholder reserves			
(4) Investments			
(5) Deferred acquisition costs			
(6) Policyholder dividends accrual			
(7) Fixed assets			
(8) Compensation and benefits accrual			
(9) Pension accrual			
(10) Receivables - nonadmitted	10,717	33,168	(22,451)
(11) Net operating loss carry-forward	56,721	278,309	(221,588)
(12) Tax credit carry-forward			
(13) Other	148,419	160,787	(12,368)
(99) Subtotal (sum of 2a1 through 2a13)	<u>\$ 241,407</u>	<u>\$ 491,966</u>	<u>\$ (250,559)</u>
(b) Statutory valuation allowance adjustment			
(c) Nonadmitted	111,314	123,682	(12,368)
(d) Admitted ordinary deferred tax assets (2a99 - 2b - 2c)	<u>\$ 130,093</u>	<u>\$ 368,284</u>	<u>\$ (238,191)</u>
(e) Capital			
(1) Investments	\$	\$	\$
(2) Net capital loss carry-forward			
(3) Real estate			
(4) Other			
(99) Subtotal (2e1+2e2+2e3+2e4)	<u>\$</u>	<u>\$</u>	<u>\$</u>
(f) Statutory valuation allowance adjustment			
(g) Nonadmitted			
(h) Admitted capital deferred tax assets (2e99 - 2f - 2g)			
(i) Admitted deferred tax assets (2d + 2h)	<u>\$ 130,093</u>	<u>\$ 368,284</u>	<u>\$ (238,191)</u>
	(1) 2022	(2) 2021	(3) Change (1-2)
3. Deferred Tax Liabilities			
(a) Ordinary			
(1) Investments	\$	\$	\$
(2) Fixed assets			
(3) Deferred and uncollected premium			
(4) Policyholder reserves			
(5) Other			
(99) Subtotal (3a1+3a2+3a3+3a4+3a5)	<u>\$</u>	<u>\$</u>	<u>\$</u>
(b) Capital			
(1) Investments	\$	\$	\$
(2) Real estate			
(3) Other			
(99) Subtotal (3b1+3b2+3b3)	<u>\$</u>	<u>\$</u>	<u>\$</u>
(c) Deferred tax liabilities (3a99 + 3b99)	<u>\$</u>	<u>\$</u>	<u>\$</u>
4. Net deferred tax assets/liabilities (2i - 3c)	<u>\$ 130,093</u>	<u>\$ 368,284</u>	<u>\$ (238,191)</u>

D. Among the More Significant Book to Tax Adjustments

The provision for federal income taxes incurred is different from that which would be obtained by applying the statutory Federal income tax rate to income before income taxes. The significant items causing this difference are as follows:

	2022	Effective Tax Rate
Statutory Income at Tax Rate	\$ 228,107	21.000 %
Change in non-admitted assets	22,452	2.067 %
Total	<u>\$ 250,559</u>	<u>23.067 %</u>
	2022	Effective Tax Rate
Federal and foreign income taxes incurred	\$ -	- %
Change in net deferred income tax	250,559	23.067 %
Total statutory income taxes	<u>\$ 250,559</u>	<u>23.067 %</u>

Notes to the Financial Statements

9. Income Taxes (Continued)

E. Operating Loss and Tax Credit Carryforwards

- (1) The Company has operating loss carryforwards of approximately \$270,000 and \$1,325,000 as of December 31, 2022 and December 31, 2021, respectively.
- (2) Income tax expense available for recoupment - Not Applicable
- (3) Deposits admitted under IRS Code Section 6603 - Not Applicable

F. Consolidated Federal Income Tax Return - Not Applicable

G. Federal or Foreign Income Tax Loss Contingencies - Not Applicable

H. Repatriation Transition Tax (RTT) - Not Applicable

I. Alternative Minimum Tax (AMT) Credit - Not Applicable

10. Information Concerning Parent, Subsidiaries, Affiliates and Other Related Parties

- A. Per a contract with the Centers of Medicare and Medicaid Services (CMS), Longevity Health Plan of New Jersey Insurance Company, Inc. began providing Medicare benefits to long-term care residents of New Jersey nursing homes on January 1, 2020, via a type of Medicare Advantage plan, which is an Institutional Special Needs Plan (I-SNP). As shown on Schedule Y included with this filing, the Company is wholly-owned by Longevity Health Holdings of New Jersey, LLC, which is owned 50% by Longevity Health Founders (LHF) and 50% by six different organizations that also own and operate nursing homes in and outside of New Jersey. LHF owns more than 90% of the voting right for Longevity Health Holdings of New Jersey, LLC.

LHF also owns holding companies that own I-SNPs in New York, Florida, Illinois, Michigan, Massachusetts, Colorado, and North Carolina.

There are additional legal entities that are established but not in operation yet. Please refer to Schedule Y part 1.

To ensure effective and efficient support, LHF wholly owns LHP MSO, LLC, which is a management services organization that provides centralized services and support to each I-SNP at cost. LHP wholly-owns Livewell Choice, LLC, which will lease licensed clinical staff to an independent physician practice; which in turn, will provide professional clinical services to LHPNJ.

The above investors in Longevity Health Holdings of New Jersey, also own and operate skilled nursing facilities, some of which are contracted with Longevity Health Plan of New Jersey Insurance, Inc. as a provider of health care services. As a result, payments to and activities with these skilled nursing facility health care providers are reported appropriately as related party activities. All payments to the investors are consistent with market rates and amounts paid for similar services to non-related parties.

In 2020, Longevity ODS of New Jersey, LLC ("NJ ODS") was established. The NJ ODS has the same owners and ownership as the Longevity Health Holdings of New Jersey, LLC. The NJ ODS intends to enter a separate ODS agreement with Longevity Health Plan of New Jersey Insurance, Inc. Such ODS agreement will be submitted to and subject to the review and approval from New Jersey State's Department of Banking and Insurance.

- B. The company entered into a management services agreement with LHP MSO, an affiliate company wholly owned by Longevity Health Founders. The purpose of this arrangement is to achieve scale, performance, and efficiency enhancements. The amounts LHP MSO, LLC charged to the Company were \$7,391,810 and \$3,361,917 for the periods ended December 31, 2022 and December 31, 2021, respectively. All amounts allocated to the Longevity Health Plan of North Carolina, Inc. are cost basis only – with no mark ups
- C. Transactions With Related Party Who Are Not Reported on Schedule Y - Not Applicable
- D. The company had amounts due to LHP MSO, LLC of \$1,126,648 and \$759,203 as of December 31, 2022, and December 31, 2021, respectively.
- E. See Note 10(B) above.
- F. Guarantees or Contingencies - Not Applicable
- G. Nature of Relationships that Could Affect Operations - Not Applicable
- H. Amount Deducted for Investment in Upstream Company - Not Applicable
- I. Detail of Investments in Affiliates Greater Than 10% of Admitted Assets - Not Applicable
- J. Write-Down for Impairments of Investments in Subsidiary Controlled or Affiliated Companies - Not Applicable
- K. Foreign Subsidiary Value Using CARVM - Not Applicable
- L. Downstream Holding Company Value Using Look-Through Method - Not Applicable
- M. All SCA Investments - Not Applicable
- N. Investment in Insurance SCAs - Not Applicable
- O. SCA and SSAP No. 48 Entity Loss Tracking - Not Applicable

11. Debt

- A. Debt, Including Capital Notes - Not Applicable
- B. FHLB (Federal Home Loan Bank) Agreements - Not Applicable

12. Retirement Plans, Deferred Compensation, Postemployment Benefits and Compensated Absences and Other Postretirement Benefit Plans

- A. Defined Benefit Plan - Not Applicable
- B. Investment Policies and Strategies of Plan Assets - Not Applicable
- C. Fair Value of Each Class of Plan Assets - Not Applicable
- D. Expected Long-Term Rate of Return for the Plan Assets - Not Applicable

Notes to the Financial Statements

12. Retirement Plans, Deferred Compensation, Postemployment Benefits and Compensated Absences and Other Postretirement Benefit Plans (Continued)

- E. Defined Contribution Plans - Not Applicable
- F. Multiemployer Plans - Not Applicable
- G. Consolidated/Holding Company Plans - Not Applicable
- H. Postemployment Benefits and Compensated Absences - Not Applicable
- I. Impact of Medicare Modernization Act on Postretirement Benefits (INT 04-17) - Not Applicable

13. Capital and Surplus, Dividend Restrictions and Quasi-Reorganizations

- A. The Company has 700,000 shares of common stock with a par value of \$1 authorized with 700,000 shares issued and outstanding.
- B. Dividend Rate of Preferred Stock - Not Applicable
- C. Dividend Restrictions - Not Applicable
- D. Ordinary Dividends - Not Applicable
- E. Company Profits Paid as Ordinary Dividends - Not Applicable
- F. Restrictions on Unassigned Funds
There were no restrictions placed on the Company's surplus, other than imposed by statute, including for whom the surplus is being held.
- G. Surplus Advances - Not Applicable
- H. Stock Held for Special Purposes - Not Applicable
- I. Changes in Special Surplus Funds - Not Applicable
- J. Unassigned Funds (Surplus) - Not Applicable
- K. Company-Issued Surplus Debentures or Similar Obligations - Not Applicable
- L. Impact of Any Restatement Due to Prior Quasi-Reorganizations - Not Applicable
- M. Effective Date(s) of Quasi-Reorganizations in the Prior 10 Years - Not Applicable

14. Liabilities, Contingencies and Assessments

- A. Contingent Commitments - Not Applicable
- B. Assessments - Not Applicable
- C. Gain Contingencies - Not Applicable
- D. Claims Related Extra Contractual Obligation and Bad Faith Losses Stemming from Lawsuits - Not Applicable
- E. Joint and Several Liabilities - Not Applicable
- F. All Other Contingencies - Not Applicable

15. Leases

- A. Lessee Operating Lease - Not Applicable
- B. Lessor Leases - Not Applicable

16. Information About Financial Instruments With Off-Balance-Sheet Risk And Financial Instruments With Concentrations of Credit Risk

- 1. Face Amount of the Company's Financial Instruments with Off-Balance-Sheet Risk - Not Applicable
- 2. Nature of Terms - Not Applicable
- 3. Exposure to Credit Related Losses - Not Applicable
- 4. Collateral Policy - Not Applicable

17. Sale, Transfer and Servicing of Financial Assets and Extinguishments of Liabilities

- A. Transfers of Receivables Reported as Sales - Not Applicable
- B. Transfer and Servicing of Financial Assets - Not Applicable
- C. Wash Sales - Not Applicable

18. Gain or Loss to the Reporting Entity from Uninsured Plans and the Uninsured Portion of Partially Insured Plans

- A. ASO Plans - Not Applicable
- B. ASC Plans - Not Applicable
- C. Medicare or Other Similarly Structured Cost Based Reimbursement Contract

(1) The Medicare Part D program is a partially insured plan. The Company recorded a payable in liability for amounts held under uninsured plans of \$937,182 and \$489,405 as of December 31, 2022, and December 31, 2021, respectively, for the Medicare Part D coverage gap discount, the Medicare Part D low-income member cost sharing subsidies and for cost reimbursement under the Medicare Part D program for the catastrophic reinsurance. The Company recorded a receivable of \$1,791,353 and \$829,614 as of December 31, 2022, and December 31, 2021, respectively, for the coverage gap discount.

Notes to the Financial Statements

18. Gain or Loss to the Reporting Entity from Uninsured Plans and the Uninsured Portion of Partially Insured Plans (Continued)

- (2) Not Applicable
- (3) Not Applicable
- (4) Not Applicable

19. Direct Premium Written/Produced by Managing General Agents/Third Party Administrators - Not Applicable

20. Fair Value Measurements

A. Fair Value Measurement

Inputs used for assets and liabilities measured and reported at Fair Value.

(1) Fair value measurements at reporting date

The Company has categorized its assets and liabilities that are reported on the balance sheet at fair value into the three-level fair value hierarchy as reflected in the table below. The three-level fair value hierarchy is based on the degree of subjectivity inherent in the valuation method by which fair value was determined. The three levels of the fair value hierarchy are defined as follows:

Level 1 – Inputs to the valuation methodology are unadjusted quoted prices for identical assets or liabilities in active markets that the Company has the ability to access.

Level 2 – Inputs to the valuation methodology include quoted prices for similar assets or liabilities in active markets; quoted prices for identical or similar assets or liabilities in inactive markets; inputs other than quoted prices that are observable; or inputs that are derived principally from or corroborated by observable market data by correlation or other means.

Level 3 – Inputs to the valuation methodology are unobservable and significant to the fair value measurement. The Company has no Level 3 assets or liabilities.

The fair value measurement level within the fair value hierarchy is based on the lowest level of any input that is significant to the fair value measurement. The Company believes its valuation methods are appropriate and consistent with the guidance in SSAP 100R - Fair value.

Description for each class of asset or liability	Level 1	Level 2	Level 3	Net Asset Value (NAV)	Total
a. Assets at fair value					
Cash Equivalents	\$ 1,701,358	\$	\$	\$	\$ 1,701,358
Total assets at fair value/NAV	\$ 1,701,358	\$	\$	\$	\$ 1,701,358
b. Liabilities at fair value					
Total liabilities at fair value	\$	\$	\$	\$	\$

(2) Fair value measurements in Level 3 of the fair value hierarchy - None

(3) Policy on transfers into and out of Level 3 - None

(4) Inputs and techniques used for Level 2 and Level 3 fair values - None

(5) Derivatives - None

B. Other Fair Value Disclosures - Not Applicable

C. Fair Values for All Financial Instruments by Level 1, 2 and 3

The table below reflect the fair values and admitted values of all admitted assets and liabilities that are financial instruments. The fair values are categorized into the three-level fair value hierarchy as described above in Note 20A.

Type of Financial Instrument	Aggregate Fair Value	Admitted Assets	Level 1	Level 2	Level 3	Net Asset Value (NAV)	Not Practicable (Carrying Value)
Long-Term Bonds	\$ 7,487,640	\$ 7,990,298	\$ 488,905	\$ 6,998,735	\$	\$	\$
Cash Equivalents	1,701,358	1,701,358	1,701,358				

D. Not Practicable to Estimate Fair Value - Not Applicable

E. Nature and Risk of Investments Reported at NAV - Not Applicable

21. Other Items

A. Unusual or Infrequent Items - Not Applicable

B. Troubled Debt Restructuring - Not Applicable

C. Other Disclosures - Not Applicable

D. Business Interruption Insurance Recoveries - Not Applicable

E. State Transferable and Non-Transferable Tax Credits - Not Applicable

F. Subprime-Mortgage-Related Risk Exposure - Not Applicable

G. Retained Assets - Not Applicable

H. Insurance-Linked Securities (ILS) Contracts - Not Applicable

I. The Amount That Could Be Realized on Life Insurance Where the Reporting Entity is Owner and Beneficiary or Has Otherwise Obtained Rights to Control the Policy - Not Applicable

22. Events Subsequent

Type I – Recognized Subsequent Events:

Notes to the Financial Statements

22. Events Subsequent (Continued)

Subsequent events have been considered through March 1, 2023 for the statutory statement issued on March 1, 2023. There were no Type I events.

Type II – Nonrecognized Subsequent Events:

Subsequent events have been considered through March 1, 2023 for the statutory statement issued on March 1, 2023. There were no Type II events.

23. Reinsurance

A. Ceded Reinsurance Report

Section 1 – General Interrogatories

- (1) Are any of the reinsurers, listed in Schedule S as non-affiliated, owned in excess of 10% or controlled, either directly or indirectly, by the company or by any representative, officer, trustee, or director of the company?
Yes () No (X)
- (2) Have any policies issued by the company been reinsured with a company chartered in a country other than the United States (excluding U.S. Branches of such companies) that is owned in excess of 10% or controlled directly or indirectly by an insured, a beneficiary, a creditor or any other person not primarily engaged in the insurance business?
Yes () No (X)

Section 2 – Ceded Reinsurance Report – Part A

- (1) Does the company have any reinsurance agreements in effect under which the reinsurer may unilaterally cancel any reinsurance for reasons other than for nonpayment of premium or other similar credits?
Yes () No (X)
- (2) Does the reporting entity have any reinsurance agreements in effect such that the amount of losses paid or accrued through the statement date may result in a payment to the reinsurer of amounts that, in aggregate and allowing for offset of mutual credits from other reinsurance agreements with the same reinsurer, exceed the total direct premium collected under the reinsured policies?
Yes () No (X)

Section 3 – Ceded Reinsurance Report – Part B

- (1) What is the estimated amount of the aggregate reduction in surplus, (for agreements other than those under which the reinsurer may unilaterally cancel for reasons other than for nonpayment of premium or other similar credits that are reflected in Section 2 above) of termination of ALL reinsurance agreements, by either party, as of the date of this statement? Where necessary, the company may consider the current or anticipated experience of the business reinsured in making this estimate. \$
- (2) Have any new agreements been executed or existing agreements amended, since January 1 of the year of this statement, to include policies or contracts that were in force or which had existing reserves established by the company as of the effective date of the agreement?
Yes () No (X)

B. Uncollectible Reinsurance - Not Applicable

C. Commutation of Reinsurance Reflected in Income and Expenses - Not Applicable

D. Certified Reinsurer Rating Downgraded or Status Subject to Revocation - Not Applicable

E. Reinsurance Credit - Not Applicable

24. Retrospectively Rated Contracts & Contracts Subject to Redetermination

A. Method Used to Estimate

The Company estimates accrued retrospective premium adjustments for its Medicare health insurance business through a model using the CMS models for the Part D Risk Corridor and Risk Adjustment.

B. Method Used to Record

The Company records accrued retrospective premium as an adjustment to earned premiums.

C. Amount and Percent of Net Retrospective Premiums

All direct premiums written are relating to Medicare Advantage plans and therefore subject to retrospective adjustment based in the CMS programs. Premiums for Medicare Advantage plans are adjusted based on the risk score of the enrolled members. The plan accrues revenue for known changes to members risks scores using the model published by CMS.

D. Medical Loss Ratio Rebates Required Pursuant to the Public Health Service Act

The Company is subject to the minimum loss ratio rebate provisions of the Patient Protection and Affordable Care Act (PPACA). PPACA will require payments to customers covered under the Company's comprehensive medical insurance if certain minimum medical loss ratios are met. Since the accrual reflects the amount of the rebate that would be payable based on year-to-date estimated medical loss ratios, the amount of the rebate will fluctuate as actual claim experience develops each calendar quarter.

E. Risk-Sharing Provisions of the Affordable Care Act (ACA) - Not Applicable

25. Change in Incurred Claims and Claim Adjustment Expenses

A. Reasons for Changes in the Provision for Incurred Claim and Claim Adjustment Expenses Attributable to Insured Events of Prior Years

Activity in the liabilities for unpaid claims and unpaid claim adjustment expenses for the years ended December 31, 2022, and December 31, 2021, is summarized as follows (000s omitted):

Notes to the Financial Statements

25. Change in Incurred Claims and Claim Adjustment Expenses (Continued)

	<u>12/31/2022</u>	<u>12/31/2021</u>
Net unpaid claims and CAE at January 1	4,241	2,817
Incurred related to:		
Current year	21,780	15,905
Prior year	<u>(263)</u>	<u>(743)</u>
	21,517	15,162
Paid related to:		
Current year	18,533	12,279
Prior year	<u>3,542</u>	<u>1,459</u>
	22,075	13,738
Balance at period end	<u>3,683</u>	<u>4,241</u>

B. Significant Changes in Methodologies and Assumptions Used in Calculating the Liability for Unpaid Claims and Claim Adjustment Expenses - None

26. Intercompany Pooling Arrangements

- A. Identification of lead entity – Not Applicable
- B. Line and types of business subject to the pooling agreement – Not Applicable
- C. Description of cession to non-affiliated reinsurers – Not Applicable
- D. Identification of all pool members – Not Applicable
- E. Explanation of any discrepancies between entries regarding pooled business – Not Applicable
- F. Description of intercompany sharing – Not Applicable
- G. Amounts due to/from the lead entity – Not Applicable

27. Structured Settlements - Not Applicable

28. Health Care Receivables

- A. Pharmaceutical Rebate Receivables

Quarter	Estimated Pharmacy Rebates as Reported on Financial Statements	Pharmacy Rebates as Billed or Otherwise Confirmed	Actual Rebates Received Within 90 Days of Billing	Actual Rebates Received Within 91 to 180 Days of Billing	Actual Rebates Received More Than 180 Days After Billing
12/31/2022	\$ 202,524	\$ 202,524	\$ -	\$ -	\$ -
09/30/2022	209,602	209,602	209,602	-	-
06/30/2022	223,883	223,883	223,883	-	-
03/31/2022	133,438	133,438	133,438	-	-
12/31/2021	186,154	186,154	98,501	87,653	-
09/30/2021	164,082	164,082	110,708	53,375	-
06/30/2021	145,237	145,237	89,767	55,471	-
03/31/2021	125,311	125,311	92,821	32,490	-
12/31/2020	111,244	111,244	62,554	48,467	224
09/30/2020	93,670	93,670	50,731	42,939	-
06/30/2020	69,807	69,807	29,390	40,416	-
03/31/2020	54,782	54,782	20,137	34,644	-

- B. Risk-Sharing Receivables - Not Applicable

29. Participating Policies - Not Applicable

30. Premium Deficiency Reserves

The Company has determined that no premium deficiency reserve is required. Premium deficiency reserve has been evaluated through December 31, 2022.

31. Anticipated Salvage and Subrogation - Not Applicable

GENERAL INTERROGATORIES
PART 1 - COMMON INTERROGATORIES

GENERAL

- 1.1. Is the reporting entity a member of an Insurance Holding Company System consisting of two or more affiliated persons, one or more of which is an insurer?..... YES
- If yes, complete Schedule Y, Parts 1, 1A, 2, and 3.
- 1.2. If yes, did the reporting entity register and file with its domiciliary State Insurance Commissioner, Director or Superintendent or with such regulatory official of the state of domicile of the principal insurer in the Holding Company System, a registration statement providing disclosure substantially similar to the standards adopted by the National Association of Insurance Commissioners (NAIC) in its Model Insurance Holding Company System Regulatory Act and model regulations pertaining thereto, or is the reporting entity subject to standards and disclosure requirements substantially similar to those required by such Act and regulations?..... YES
- 1.3. State Regulating?..... New Jersey
- 1.4. Is the reporting entity publicly traded or a member of a publicly traded group?..... NO
- 1.5. If the response to 1.4 is yes, provide the CIK (Central Index Key) code issued by the SEC for the entity/group.....
- 2.1. Has any change been made during the year of this statement in the charter, by-laws, articles of incorporation, or deed of settlement of the reporting entity?..... NO
- 2.2. If yes, date of change:.....
- 3.1. State as of what date the latest financial examination of the reporting entity was made or is being made. 12/31/2022
- 3.2. State the as of date that the latest financial examination report became available from either the state of domicile or the reporting entity. This date should be the date of the examined balance sheet and not the date the report was completed or released.....
- 3.3. State as of what date the latest financial examination report became available to other states or the public from either the state of domicile or the reporting entity. This is the release date or completion date of the examination report and not the date of the examination (balance sheet date).....
- 3.4. By what department or departments?
The New York Department of Financial Services is leading a coordinated examination of the Longevity Health Group and will include Longevity Health Plans of New York, Florida, New Jersey, Illinois, Michigan, and North Carolina. The examination will cover the time period from inception to December 31, 2022.
- 3.5. Have all financial statement adjustments within the latest financial examination report been accounted for in a subsequent financial statement filed with Departments?..... N/A
- 3.6. Have all of the recommendations within the latest financial examination report been complied with?..... N/A
- 4.1. During the period covered by this statement, did any agent, broker, sales representative, non-affiliated sales/service organization or any combination thereof under common control (other than salaried employees of the reporting entity) receive credit or commissions for or control a substantial part (more than 20 percent of any major line of business measured on direct premiums) of:.....
- 4.11. sales of new business?..... NO
- 4.12. renewals?..... NO
- 4.2. During the period covered by this statement, did any sales/service organization owned in whole or in part by the reporting entity or an affiliate, receive credit or commissions for or control a substantial part (more than 20 percent of any major line of business measured on direct premiums) of:.....
- 4.21. sales of new business?..... NO
- 4.22. renewals?..... NO
- 5.1. Has the reporting entity been a party to a merger or consolidation during the period covered by this statement?..... NO
- If yes, complete and file the merger history data file with the NAIC.
- 5.2. If yes, provide the name of the entity, NAIC company code, and state of domicile (use two letter state abbreviation) for any entity that has ceased to exist as a result of the merger or consolidation.

1	2	3
Name of Entity	NAIC Company Code	State of Domicile

- 6.1. Has the reporting entity had any Certificates of Authority, licenses or registrations (including corporate registration, if applicable) suspended or revoked by any governmental entity during the reporting period?..... NO
- 6.2. If yes, give full information
- 7.1. Does any foreign (non-United States) person or entity directly or indirectly control 10% or more of the reporting entity?..... NO
- 7.2. If yes,
 - 7.21. State the percentage of foreign control..... %
 - 7.22. State the nationality(s) of the foreign person(s) or entity(s); or if the entity is a mutual or reciprocal, the nationality of its manager or attorney-in-fact and identify the type of entity(s) (e.g., individual, corporation, government, manager or attorney-in-fact).

1	2
Nationality	Type of Entity

- 8.1. Is the company a subsidiary of a depository institution holding company (DIHC) or a DIHC itself, regulated by the Federal Reserve Board?..... NO
- 8.2. If response to 8.1 is yes, please identify the name of the DIHC.....
- 8.3. Is the company affiliated with one or more banks, thrifts or securities firms?..... NO
- 8.4. If response to 8.3 is yes, please provide the names and locations (city and state of the main office) of any affiliates regulated by a federal financial regulatory services agency [i.e. the Federal Reserve Board (FRB), the Office of the Comptroller of the Currency (OCC), the Federal Deposit Insurance Corporation (FDIC) and the Securities Exchange Commission (SEC)] and identify the affiliate's primary federal regulator.

1	2	3	4	5	6
Affiliate Name	Location (City, State)	FRB	OCC	FDIC	SEC

GENERAL INTERROGATORIES
PART 1 - COMMON INTERROGATORIES

- 8.5. Is the reporting entity a depository institution holding company with significant insurance operations as defined by the Board of Governors of Federal Reserve System or a subsidiary of the depository institution holding company?..... NO
- 8.6. If response to 8.5 is no, is the reporting entity a company or subsidiary of a company that has otherwise been made subject to the Federal Reserve Board's capital rule?..... N/A
9. What is the name and address of the independent certified public accountant or accounting firm retained to conduct the annual audit?
LBMC, PC 201 Franklin Road Brentwood, TN 37027
- 10.1. Has the insurer been granted any exemptions to the prohibited non-audit services provided by the certified independent public accountant requirements as allowed in Section 7H of the Annual Financial Reporting Model Regulation (Model Audit Rule), or substantially similar state law or regulation?..... NO
- 10.2. If the response to 10.1 is yes, provide information related to this exemption:
- 10.3. Has the insurer been granted any exemptions related to the other requirements of the Annual Financial Reporting Model Regulation as allowed for in Section 18A of the Model Regulation, or substantially similar state law or regulation?..... NO
- 10.4. If the response to 10.3 is yes, provide information related to this exemption:
- 10.5. Has the reporting entity established an Audit Committee in compliance with the domiciliary state insurance laws?..... No
- 10.6. If the response to 10.5 is no or n/a, please explain.
Due to the size of the insurer, the audit committee is not required.
11. What is the name, address and affiliation (officer/employee of the reporting entity or actuary/consultant associated with an actuarial consulting firm) of the individual providing the statement of actuarial opinion/certification?
Kelly S. Backes, Milliman, Inc, Actuary, 15800 W Bluemound Rd #100, Brookfield, WI 53005
- 12.1. Does the reporting entity own any securities of a real estate holding company or otherwise hold real estate indirectly?..... NO
- 12.11 Name of real estate holding company
- 12.12 Number of parcels involved.....
- 12.13 Total book / adjusted carrying value..... \$
- 12.2. If yes, provide explanation
13. FOR UNITED STATES BRANCHES OF ALIEN REPORTING ENTITIES ONLY:
- 13.1. What changes have been made during the year in the United States manager or the United States trustees of the reporting entity?.....
- 13.2. Does this statement contain all business transacted for the reporting entity through its United States Branch on risks wherever located?..... NO
- 13.3. Have there been any changes made to any of the trust indentures during the year?..... NO
- 13.4. If answer to (13.3) is yes, has the domiciliary or entry state approved the changes?.....
- 14.1. Are the senior officers (principal executive officer, principal financial officer, principal accounting officer or controller, or persons performing similar functions) of the reporting entity subject to a code of ethics, which includes the following standards?..... YES
- a. Honest and ethical conduct, including the ethical handling of actual or apparent conflicts of interest between personal and professional relationships;
 - b. Full, fair, accurate, timely and understandable disclosure in the periodic reports required to be filed by the reporting entity;
 - c. Compliance with applicable governmental laws, rules and regulations;
 - d. The prompt internal reporting of violations to an appropriate person or persons identified in the code; and
 - e. Accountability for adherence to the code.
- 14.11. If the response to 14.1 is no, please explain:
- 14.2. Has the code of ethics for senior managers been amended?..... NO
- 14.21. If the response to 14.2 is yes, provide information related to amendment(s).
- 14.3. Have any provisions of the code of ethics been waived for any of the specified officers?..... NO
- 14.31. If the response to 14.3 is yes, provide the nature of any waiver(s).
- 15.1. Is the reporting entity the beneficiary of a Letter of Credit that is unrelated to reinsurance where the issuing or confirming bank is not on the SVO Bank List?..... NO
- 15.2. If the response to 15.1 is yes, indicate the American Bankers Association (ABA) Routing Number and the name of the issuing or confirming bank of the Letter of Credit and describe the circumstances in which the Letter of Credit is triggered.

1 American Bankers Association (ABA) Routing Number	2 Issuing or Confirming Bank Name	3 Circumstances That Can Trigger the Letter of Credit	4 Amount
.....	\$.....

BOARD OF DIRECTORS

16. Is the purchase or sale of all investments of the reporting entity passed upon either by the board of directors or a subordinate committee thereof?..... YES
17. Does the reporting entity keep a complete permanent record of the proceedings of its board of directors and all subordinate committees thereof?..... YES
18. Has the reporting entity an established procedure for disclosure to its board of directors or trustees of any material interest or affiliation on the part of any of its officers, directors, trustees or responsible employees that is in conflict or is likely to conflict with the official duties of such person?..... YES

GENERAL INTERROGATORIES
PART 1 - COMMON INTERROGATORIES

FINANCIAL

- 19. Has this statement been prepared using a basis of accounting other than Statutory Accounting Principles (e.g., Generally Accepted Accounting Principles)? NO
- 20.1. Total amount loaned during the year (inclusive of Separate Accounts, exclusive of policy loans):
 - 20.11 To directors or other officers \$
 - 20.12 To stockholders not officers \$
 - 20.13 Trustees, supreme or grand (Fraternal only) \$
- 20.2. Total amount of loans outstanding at the end of year (inclusive of Separate Accounts, exclusive of policy loans):
 - 20.21 To directors or other officers \$
 - 20.22 To stockholders not officers \$
 - 20.23 Trustees, supreme or grand (Fraternal only) \$
- 21.1. Were any assets reported in this statement subject to a contractual obligation to transfer to another party without the liability for such obligation being reported in the statement? NO
- 21.2. If yes, state the amount thereof at December 31 of the current year:
 - 21.21 Rented from others \$
 - 21.22 Borrowed from others \$
 - 21.23 Leased from others \$
 - 21.24 Other \$
- 22.1. Does this statement include payments for assessments as described in the *Annual Statement Instructions* other than guaranty fund or guaranty association assessments? NO
- 22.2. If answer is yes:
 - 22.21 Amount paid as losses or risk adjustment \$
 - 22.22 Amount paid as expenses \$
 - 22.23 Other amounts paid \$
- 23.1. Does the reporting entity report any amounts due from parent, subsidiaries or affiliates on Page 2 of this statement? NO
- 23.2. If yes, indicate any amounts receivable from parent included in the Page 2 amount. \$
- 24.1. Does the insurer utilize third parties to pay agent commissions in which the amounts advanced by the third parties are not settled in full within 90 days? NO
- 24.2. If the response to 24.1 is yes, identify the third-party that pays the agents and whether they are a related party.

1	2
Name of Third-Party	Is the Third-Party Agent a Related Party (Yes/No)

INVESTMENT

- 25.01. Were all the stocks, bonds and other securities owned December 31 of current year, over which the reporting entity has exclusive control, in the actual possession of the reporting entity on said date? (other than securities lending programs addressed in 25.03) YES
- 25.02. If no, give full and complete information, relating thereto
- 25.03. For securities lending programs, provide a description of the program including value for collateral and amount of loaned securities, and whether collateral is carried on or off-balance sheet. (an alternative is to reference Note 17 where this information is also provided)
- 25.04. For the reporting entity's securities lending program, report amount of collateral for conforming programs as outlined in the Risk-Based Capital Instructions \$
- 25.05. For the reporting entity's securities lending program, report amount of collateral for other programs \$
- 25.06. Does your securities lending program require 102% (domestic securities) and 105% (foreign securities) from the counterparty at the outset of the contract? N/A
- 25.07. Does the reporting entity non-admit when the collateral received from the counterparty falls below 100%? N/A
- 25.08. Does the reporting entity or the reporting entity's securities lending agent utilize the Master Securities Lending Agreement (MSLA) to conduct securities lending? N/A
- 25.09. For the reporting entity's securities lending program, state the amount of the following as of December 31 of the current year:
 - 25.091. Total fair value of reinvested collateral assets reported on Schedule DL, Parts 1 and 2 \$
 - 25.092. Total book adjusted/carrying value of reinvested collateral assets reported on Schedule DL, Parts 1 and 2 \$
 - 25.093. Total payable for securities lending reported on the liability page \$
- 26.1. Were any of the stocks, bonds or other assets of the reporting entity owned at December 31 of the current year not exclusively under the control of the reporting entity or has the reporting entity sold or transferred any assets subject to a put option contract that is currently in force? (Exclude securities subject to Interrogatory 21.1 and 25.03) YES
- 26.2. If yes, state the amount thereof at December 31 of the current year:
 - 26.21. Subject to repurchase agreements \$
 - 26.22. Subject to reverse repurchase agreements \$
 - 26.23. Subject to dollar repurchase agreements \$
 - 26.24. Subject to reverse dollar repurchase agreements \$
 - 26.25. Placed under option agreements \$
 - 26.26. Letter stock or securities restricted as to sale - excluding FHLB Capital Stock \$
 - 26.27. FHLB Capital Stock \$
 - 26.28. On deposit with states \$ 102,038
 - 26.29. On deposit with other regulatory bodies \$
 - 26.30. Pledged as collateral - excluding collateral pledged to an FHLB \$
 - 26.31. Pledged as collateral to FHLB - including assets backing funding agreements \$
 - 26.32. Other \$
- 26.3. For category (26.26) provide the following:

1	2	3
Nature of Restriction	Description	Amount
		\$

GENERAL INTERROGATORIES
PART 1 - COMMON INTERROGATORIES

- 27.1. Does the reporting entity have any hedging transactions reported on Schedule DB?..... NO
- 27.2. If yes, has a comprehensive description of the hedging program been made available to the domiciliary state? If no, attach a description with this statement..... N/A

LINES 27.3 through 27.5: FOR LIFE/FRATERNAL REPORTING ENTITIES ONLY:

- 27.3. Does the reporting entity utilize derivatives to hedge variable annuity guarantees subject to fluctuations as a result of interest rate sensitivity?..... NO
- 27.4. If the response to 27.3 is YES, does the reporting entity utilize:
- 27.41 Special accounting provision of SSAP No. 108..... NO
- 27.42 Permitted accounting practice..... NO
- 27.43 Other accounting guidance..... NO
- 27.5. By responding YES to 27.41 regarding utilizing the special accounting provisions of SSAP No. 108, the reporting entity attests to the following:..... NO
- The reporting entity has obtained explicit approval from the domiciliary state.
 - Hedging strategy subject to the special accounting provisions is consistent with the requirements of VM-21.
 - Actuarial certification has been obtained which indicates that the hedging strategy is incorporated within the establishment of VM-21 reserves and provides the impact of the hedging strategy within the Actuarial Guideline Conditional Tail Expectation Amount.
 - Financial Officer Certification has been obtained which indicates that the hedging strategy meets the definition of a Clearly Defined Hedging Strategy within VM-21 and that the Clearly Defined Hedging Strategy is the hedging strategy being used by the company in its actual day-to-day risk mitigation efforts.

- 28.1. Were any preferred stocks or bonds owned as of December 31 of the current year mandatorily convertible into equity, or, at the option of the issuer, convertible into equity?..... NO
- 28.2. If yes, state the amount thereof at December 31 of the current year..... \$

29. Excluding items in Schedule E- Part 3 - Special Deposits, real estate, mortgage loans and investments held physically in the reporting entity's offices, vaults or safety deposit boxes, were all stocks, bonds and other securities, owned throughout the current year held pursuant to a custodial agreement with a qualified bank or trust company in accordance with Section 1, III - General Examination Considerations, F. Outsourcing of Critical Functions, Custodial or Safekeeping Agreements of the *NAIC Financial Condition Examiners Handbook*?..... YES

29.01. For agreements that comply with the requirements of the *NAIC Financial Condition Examiners Handbook*, complete the following:

1 Name of Custodian(s)	2 Custodian's Address
US Bank	Two Liberty Place, 50 South Street, Suite 2000 Philadelphia, PA 19102

29.02. For all agreements that do not comply with the requirements of the *NAIC Financial Condition Examiners Handbook*, provide the name, location and a complete explanation:

1 Name(s)	2 Location(s)	3 Complete Explanation(s)

- 29.03. Have there been any changes, including name changes, in the custodian(s) identified in 29.01 during the current year?..... YES

29.04. If yes, give full and complete information relating thereto:

1 Old Custodian	2 New Custodian	3 Date of Change	4 Reason
N/A	US Bank	01/01/2022	New investment portfolio in 2022

29.05. Investment management – Identify all investment advisors, investment managers, broker/dealers, including individuals that have the authority to make investment decisions on behalf of the reporting entity. For assets that are managed internally by employees of the reporting entity, note as such. ["...that have access to the investment accounts"; "...handle securities"]

1 Name of Firm or Individual	2 Affiliation
Vicky Zhai - employee, investment decision Parkway Advisors LP	U

- 29.0597. For those firms/individuals listed in the table for Question 29.05, do any firms/individuals unaffiliated with the reporting entity (i.e., designated with a "U") manage more than 10% of the reporting entity's invested assets?..... YES

- 29.0598. For firms/individuals unaffiliated with the reporting entity (i.e., designated with a "U") listed in the table for Question 29.05, does the total assets under management aggregate to more than 50% of the reporting entity's invested assets?..... YES

29.06. For those firms or individuals listed in the table for 29.05 with an affiliation code of "A" (affiliated) or "U" (unaffiliated), provide the information for the table below.

1 Central Registration Depository Number	2 Name of Firm or Individual	3 Legal Entity Identifier (LEI)	4 Registered With The Securities and Exchange Commission (SEC)	5 Investment Management Agreement (IMA) Filed
112629	Parkway Advisors LP			NO

- 30.1. Does the reporting entity have any diversified mutual funds reported in Schedule D - Part 2 (diversified according to the Securities and Exchange Commission (SEC) in the Investment Company Act of 1940 [Section 5 (b) (1)])?..... NO

30.2. If yes, complete the following schedule:

1 CUSIP #	2 Name of Mutual Fund	3 Book/Adjusted Carrying Value
30.2999 TOTAL		\$

30.3. For each mutual fund listed in the table above, complete the following schedule:

GENERAL INTERROGATORIES
PART 1 - COMMON INTERROGATORIES

1	2	3	4
Name of Mutual Fund (from above table)	Name of Significant Holding of the Mutual Fund	Amount of Mutual Fund's Book / Adjusted Carrying Value Attributable to the Holding	Date of Valuation
		\$	

31. Provide the following information for all short-term and long-term bonds and all preferred stocks. Do not substitute amortized value or statement value for fair value.

	1	2	3
	Statement (Admitted) Value	Fair Value	Excess of Statement over Fair Value (-), or Fair Value over Statement (+)
31.1. Bonds	\$ 7,990,298	\$ 7,487,640	\$ (502,658)
31.2. Preferred Stocks			
31.3. Totals	\$ 7,990,298	\$ 7,487,640	\$ (502,658)

31.4. Describe the sources or methods utilized in determining the fair values:

Custodial statements

32.1. Was the rate used to calculate fair value determined by a broker or custodian for any of the securities in Schedule D? YES

32.2. If the answer to 32.1 is yes, does the reporting entity have a copy of the broker's or custodian's pricing policy (hard copy or electronic copy) for all brokers or custodians used as a pricing source? YES

32.3. If the answer to 32.2 is no, describe the reporting entity's process for determining a reliable pricing source for purposes of disclosure of fair value for Schedule D:

33.1. Have all the filing requirements of the *Purposes and Procedures Manual of the NAIC Investment Analysis Office* been followed? YES

33.2. If no, list exceptions:

34. By self-designating 5GI securities, the reporting entity is certifying the following elements of each self-designated 5GI security:
 a. Documentation necessary to permit a full credit analysis of the security does not exist or an NAIC CRP credit rating for an FE or PL security is not available.
 b. Issuer or obligor is current on all contracted interest and principal payments.
 c. The insurer has an actual expectation of ultimate payment of all contracted interest and principal.
 Has the reporting entity self-designated 5GI securities? NO

35. By self-designating PLGI securities, the reporting entity is certifying the following elements of each self-designated PLGI security:
 a. The security was purchased prior to January 1, 2018.
 b. The reporting entity is holding capital commensurate with the NAIC Designation reported for the security.
 c. The NAIC Designation was derived from the credit rating assigned by an NAIC CRP in its legal capacity as an NRSRO which is shown on a current private letter rating held by the insurer and available for examination by state insurance regulators.
 d. The reporting entity is not permitted to share this credit rating of the PL security with the SVO.
 Has the reporting entity self-designated PLGI securities? NO

36. By assigning FE to a Schedule BA non-registered private fund, the reporting entity is certifying the following elements of each self-designated FE fund:
 a. The shares were purchased prior to January 1, 2019.
 b. The reporting entity is holding capital commensurate with the NAIC Designation reported for the security.
 c. The security had a public credit rating(s) with annual surveillance assigned by an NAIC CRP in its legal capacity as an NRSRO prior to January 1, 2019.
 d. The fund only or predominantly holds bonds in its portfolio.
 e. The current reported NAIC Designation was derived from the public credit rating(s) with annual surveillance assigned by an NAIC CRP in its legal capacity as an NRSRO.
 f. The public credit rating(s) with annual surveillance assigned by an NAIC CRP has not lapsed.
 Has the reporting entity assigned FE to Schedule BA non-registered private funds that complied with the above criteria? NO

37. By rolling/renewing short-term or cash equivalent investments with continued reporting on Schedule DA, Part 1 or Schedule E Part 2 (identified through a code (%) in those investment schedules), the reporting entity is certifying to the following:
 a. The investment is a liquid asset that can be terminated by the reporting entity on the current maturity date.
 b. If the investment is with a nonrelated party or nonaffiliate, then it reflects an arms-length transaction with renewal completed at the discretion of all involved parties.
 c. If the investment is with a related party or affiliate, then the reporting entity has completed robust re-underwriting of the transaction for which documentation is available for regulator review.
 d. Short-term and cash equivalent investments that have been renewed/rolled from the prior period that do not meet the criteria in 37.a - 37.c are reported as long-term investments.
 Has the reporting entity rolled/renewed short-term or cash equivalent investments in accordance with these criteria? N/A

38.1 Does the reporting entity directly hold cryptocurrencies? NO

38.2 If the response to 38.1 is yes, on what schedule are they reported?

39.1 Does the reporting entity directly or indirectly accept cryptocurrencies as payments for premiums on policies? NO

39.2 If the response to 39.1 is yes, are the cryptocurrencies held directly or are they immediately converted to U.S. dollars?

39.21 Held directly

39.22 Immediately converted to U.S. dollars

39.3. If the response to 38.1 or 39.1 is yes, list all cryptocurrencies accepted for payments of premiums or that are held directly.

1	2	3
Name of Cryptocurrency	Immediately Converted to USD, Directly Held, or Both	Accepted for Payment of Premiums

OTHER

40.1. Amount of payments to trade associations, service organizations and statistical or rating bureaus, if any? \$

GENERAL INTERROGATORIES

PART 1 - COMMON INTERROGATORIES

40.2. List the name of the organization and the amount paid if any such payment represented 25% or more of the total payments to trade associations, service organizations, and statistical or rating bureaus during the period covered by this statement.

1	2
Name	Amount Paid
	\$

41.1. Amount of payments for legal expenses, if any?..... \$..... 10,913

41.2. List the name of the firm and the amount paid if any such payment represented 25% or more of the total payments for legal expenses during the period covered by this statement.

1	2
Name	Amount Paid
Bressler Amery and Ross, PC	\$..... 10,913

42.1. Amount of payments for expenditures in connection with matters before legislative bodies, officers, or departments of government, if any?..... \$.....

42.2. List the name of the firm and the amount paid if any such payment represented 25% or more of the total payment expenditures in connection with matters before legislative bodies, officers, or departments of government during the period covered by this statement.

1	2
Name	Amount Paid
	\$

GENERAL INTERROGATORIES
PART 2 - HEALTH INTERROGATORIES

- 1.1 Does the reporting entity have any direct Medicare Supplement Insurance in force? NO
- 1.2 If yes, indicate premium earned on U.S. business only \$
- 1.3 What portion of Item (1.2) is not reported on the Medicare Supplement Insurance Experience Exhibit? \$
- 1.31 Reason for excluding

- 1.4 Indicate amount of earned premium attributable to Canadian and/or Other Alien not included in Item (1.2) above \$
- 1.5 Indicate total incurred claims on all Medicare Supplement insurance \$
- 1.6 Individual policies:
Most current three years:
1.61 Total premium earned \$
1.62 Total incurred claims \$
1.63 Number of covered lives
- All years prior to most current three years:
1.64 Total premium earned \$
1.65 Total incurred claims \$
1.66 Number of covered lives
- 1.7 Group policies:
Most current three years:
1.71 Total premium earned \$
1.72 Total incurred claims \$
1.73 Number of covered lives
- All years prior to most current three years:
1.74 Total premium earned \$
1.75 Total incurred claims \$
1.76 Number of covered lives

2. Health Test:

	1	2
	Current Year	Prior Year
2.1 Premium Numerator	\$ 27,794,522	\$ 18,811,016
2.2 Premium Denominator	\$ 27,794,522	\$ 18,811,016
2.3 Premium Ratio (2.1/2.2)	100.000	100.000
2.4 Reserve Numerator	\$ 5,347,958	\$ 4,453,659
2.5 Reserve Denominator	\$ 5,347,958	\$ 4,453,659
2.6 Reserve Ratio (2.4/2.5)	100.000 %	100.000 %

- 3.1 Has the reporting entity received any endowment or gift from contracting hospitals, physicians, dentists, or others that is agreed will be returned when, as and if the earnings of the reporting entity permits? NO
- 3.2 If yes, give particulars:

- 4.1 Have copies of all agreements stating the period and nature of hospitals', physicians', and dentists' care offered to subscribers and dependents been filed with the appropriate regulatory agency? YES
- 4.2 If not previously filed, furnish herewith a copy(ies) of such agreement(s). Do these agreements include additional benefits offered? NO
- 5.1 Does the reporting entity have stop-loss reinsurance? YES
- 5.2 If no, explain:

- 5.3 Maximum retained risk (see instructions)

 - 5.31 Comprehensive Medical \$ 250,000
 - 5.32 Medical Only \$
 - 5.33 Medicare Supplement \$
 - 5.34 Dental and Vision \$
 - 5.35 Other Limited Benefit Plan \$
 - 5.36 Other \$

- 6. Describe arrangement which the reporting entity may have to protect subscribers and their dependents against the risk of insolvency including hold harmless provisions, conversion privileges with other carriers, agreements with providers to continue rendering services, and any other agreements:
Health Plan protects enrolled members and their dependents via written agreements with providers: (a) mandating continuity of treatment in the event of contract termination, including but not limited to bankruptcy or insolvency; (b) prohibiting providers from seeking payment directly from enrolled members and their dependents in the event of nonpayment by Health Plan, insolvency, or breach of the agreement, except for copayments, coinsurance, and deductibles; and, (c) requiring that such contract terms survive the termination, expiration, or dissolution of the contract.
- 7.1 Does the reporting entity set up its claim liability for provider services on a service date basis? YES
- 7.2 If no, give details

GENERAL INTERROGATORIES
PART 2 - HEALTH INTERROGATORIES

- 8. Provide the following information regarding participating providers:
 - 8.1 Number of providers at start of reporting year 6,383
 - 8.2 Number of providers at end of reporting year 24,716
- 9.1 Does the reporting entity have business subject to premium rate guarantees? NO
- 9.2 If yes, direct premium earned:
 - 9.21 Business with rate guarantees between 15-36 months \$
 - 9.22 Business with rate guarantees over 36 months \$
- 10.1 Does the reporting entity have Incentive Pool, Withhold or Bonus Arrangements in its provider contracts? YES
- 10.2 If yes:
 - 10.21 Maximum amount payable bonuses \$ 1,695,325
 - 10.22 Amount actually paid for year bonuses \$ 815,002
 - 10.23 Maximum amount payable withholds \$
 - 10.24 Amount actually paid for year withholds \$
- 11.1 Is the reporting entity organized as:
 - 11.12 A Medical Group/Staff Model, NO
 - 11.13 An Individual Practice Association (IPA), or, NO
 - 11.14 A Mixed Model (combination of above)? NO
- 11.2 Is the reporting entity subject to Statutory Minimum Capital and Surplus Requirements? YES
- 11.3 If yes, show the name of the state requiring such minimum capital and surplus. New Jersey
- 11.4 If yes, show the amount required. \$ 3,500,000
- 11.5 Is this amount included as part of a contingency reserve in stockholder's equity? NO
- 11.6 If the amount is calculated, show the calculation

12. List service areas in which reporting entity is licensed to operate:

1 Name of Service Area
Atlantic
Bergen
Burlington
Camden
Essex
Mercer
Middlesex
Monmouth
Morris
Ocean
Passaic
Somerset
Union

- 13.1 Do you act as a custodian for health savings accounts? NO
- 13.2 If yes, please provide the amount of custodial funds held as of the reporting date. \$
- 13.3 Do you act as an administrator for health savings accounts? NO
- 13.4 If yes, please provide the balance of the funds administered as of the reporting date. \$
- 14.1 Are any of the captive affiliates reported on Schedule S, Part 3, authorized reinsurers? N/A
- 14.2. If the answer to 14.1 is yes, please provide the following:

1 Company Name	2 NAIC Company Code	3 Domiciliary Jurisdiction	4 Reserve Credit	Assets Supporting Reserve Credit		
				5 Letters of Credit	6 Trust Agreements	7 Other

- 15. Provide the following for individual ordinary life insurance* policies (U.S. business only) for the current year (prior to reinsurance assumed or ceded).
 - 15.1 Direct Premium Written \$
 - 15.2 Total Incurred Claims \$
 - 15.3 Number of Covered Lives

*Ordinary Life Insurance Includes
Term (whether full underwriting, limited underwriting, jet issue, "short form app")
Whole Life (whether full underwriting, limited underwriting, jet issue, "short form app")
Variable Life (with or without secondary guarantee)
Universal Life (with or without secondary guarantee)
Variable Universal Life (with or without secondary guarantee)

- 16. Is the reporting entity licensed or chartered, registered, qualified, eligible or writing business in at least two states? NO
- 16.1 If no, does the reporting entity assume reinsurance business that covers risks residing in at least one state other than the state of domicile of the reporting entity? NO

FIVE-YEAR HISTORICAL DATA

	1	2	3	4	5
	2022	2021	2020	2019	2018
Balance Sheet (Pages 2 and 3)					
1. Total admitted assets (Page 2, Line 28)	13,772,433	10,931,626	7,109,015		
2. Total liabilities (Page 3, Line 24)	7,815,712	5,929,851	3,129,613		
3. Statutory minimum capital and surplus requirement	3,500,000	3,500,000	3,500,000		
4. Total capital and surplus (Page 3, Line 33)	5,956,721	5,001,775	3,979,402		
Income Statement (Page 4)					
5. Total revenues (Line 8)	27,794,522	18,811,016	10,155,309		
6. Total medical and hospital expenses (Line 18)	21,932,527	15,022,594	9,977,541		
7. Claims adjustment expenses (Line 20)	1,843,846	878,224	497,897		
8. Total administrative expenses (Line 21)	3,043,405	2,151,602	1,750,884		
9. Net underwriting gain (loss) (Line 24)	974,744	758,596	(2,071,013)		
10. Net investment gain (loss) (Line 27)	111,480	411	10,698		
11. Total other income (Lines 28 plus 29)					
12. Net income or (loss) (Line 32)	1,086,224	759,007	(2,060,315)		
Cash Flow (Page 6)					
13. Net cash from operations (Line 11)	1,096,941	2,561,901	(43,155)		
Risk-Based Capital Analysis					
14. Total adjusted capital	5,956,721	5,001,775	3,979,402		
15. Authorized control level risk-based capital	1,136,971	777,316	507,500		
Enrollment (Exhibit 1)					
16. Total members at end of period (Column 5, Line 7)	863	752	499		
17. Total members months (Column 6, Line 7)	9,967	7,604	4,300		
Operating Percentage (Page 4) (Item divided by Page 4, sum of Lines 2, 3, and 5) x 100.0					
18. Premiums earned plus risk revenue (Line 2 plus Lines 3 and 5)	100.0 %	100.0 %	100.0 %	100.0 %	100.0 %
19. Total hospital and medical plus other non-health (Lines 18 plus Line 19)	78.9	79.9	98.3		
20. Cost containment expenses	4.9	1.5	2.1		
21. Other claims adjustment expenses	1.8	3.2	2.8		
22. Total underwriting deductions (Line 23)	96.5	96.0	120.4		
23. Total underwriting gain (loss) (Line 24)	3.5	4.0	(20.4)		
Unpaid Claims Analysis (U&I Exhibit, Part 2B)					
24. Total claims incurred for prior years (Line 17, Col. 5)	3,362,319	1,766,855			
25. Estimated liability of unpaid claims-[prior year (Line 17, Col. 6)]	3,667,413	2,566,468			
Investments in Parent, Subsidiaries and Affiliates					
26. Affiliated bonds (Sch. D Summary, Line 12, Col. 1)					
27. Affiliated preferred stocks (Sch. D Summary, Line 18, Col. 1)					
28. Affiliated common stocks (Sch. D Summary, Line 24, Col. 1)					
29. Affiliated short-term investments (subtotal included in Sch. DA Verification, Col. 5, Line 10)					
30. Affiliated mortgage loans on real estate					
31. All other affiliated					
32. Total of above Lines 26 to 31					
33. Total investment in parent included in Lines 26 to 31 above					

NOTE: If a party to a merger, have the two most recent years of this exhibit been restated due to a merger in compliance with the disclosure requirements of SSAP No. 3—Accounting Changes and Correction of Errors?

If no, please explain

SCHEDULE T - PREMIUMS AND OTHER CONSIDERATIONS

Allocated by States and Territories

1	Direct Business Only									
	2	3	4	5	6	7	8	9	10	
States, Etc.	Active Status (a)	Accident & Health Premiums	Medicare Title XVIII	Medicaid Title XIX	CHIP Title XXI	Federal Employees Health Benefits Plan Premiums	Life & Annuity Premiums & Other Considerations	Property / Casualty Premiums	Total Columns 2 Through 8	Deposit-Type Contracts
1. Alabama	AL	N								
2. Alaska	AK	N								
3. Arizona	AZ	N								
4. Arkansas	AR	N								
5. California	CA	N								
6. Colorado	CO	N								
7. Connecticut	CT	N								
8. Delaware	DE	N								
9. District of Columbia	DC	N								
10. Florida	FL	N								
11. Georgia	GA	N								
12. Hawaii	HI	N								
13. Idaho	ID	N								
14. Illinois	IL	N								
15. Indiana	IN	N								
16. Iowa	IA	N								
17. Kansas	KS	N								
18. Kentucky	KY	N								
19. Louisiana	LA	N								
20. Maine	ME	N								
21. Maryland	MD	N								
22. Massachusetts	MA	N								
23. Michigan	MI	N								
24. Minnesota	MN	N								
25. Mississippi	MS	N								
26. Missouri	MO	N								
27. Montana	MT	N								
28. Nebraska	NE	N								
29. Nevada	NV	N								
30. New Hampshire	NH	N								
31. New Jersey	NJ	L	27,847,003						27,847,003	
32. New Mexico	NM	N								
33. New York	NY	N								
34. North Carolina	NC	N								
35. North Dakota	ND	N								
36. Ohio	OH	N								
37. Oklahoma	OK	N								
38. Oregon	OR	N								
39. Pennsylvania	PA	N								
40. Rhode Island	RI	N								
41. South Carolina	SC	N								
42. South Dakota	SD	N								
43. Tennessee	TN	N								
44. Texas	TX	N								
45. Utah	UT	N								
46. Vermont	VT	N								
47. Virginia	VA	N								
48. Washington	WA	N								
49. West Virginia	WV	N								
50. Wisconsin	WI	N								
51. Wyoming	WY	N								
52. American Samoa	AS	N								
53. Guam	GU	N								
54. Puerto Rico	PR	N								
55. US Virgin Islands	VI	N								
56. Northern Mariana Islands	MP	N								
57. Canada	CAN	N								
58. Aggregate Other Alien	OT	XXX								
59. Subtotal	XXX		27,847,003						27,847,003	
60. Reporting entity contributions for Employee Benefit Plans	XXX									
61. Total (Direct Business)	XXX		27,847,003						27,847,003	
Details of Write-Ins										
58001.	XXX									
58002.	XXX									
58003.	XXX									
58998. Summary of remaining write-ins for Line 58 from overflow page	XXX									
58999. Totals (Lines 58001 through 58003 plus 58998) (Line 58 above)	XXX									

(a) Active Status Counts

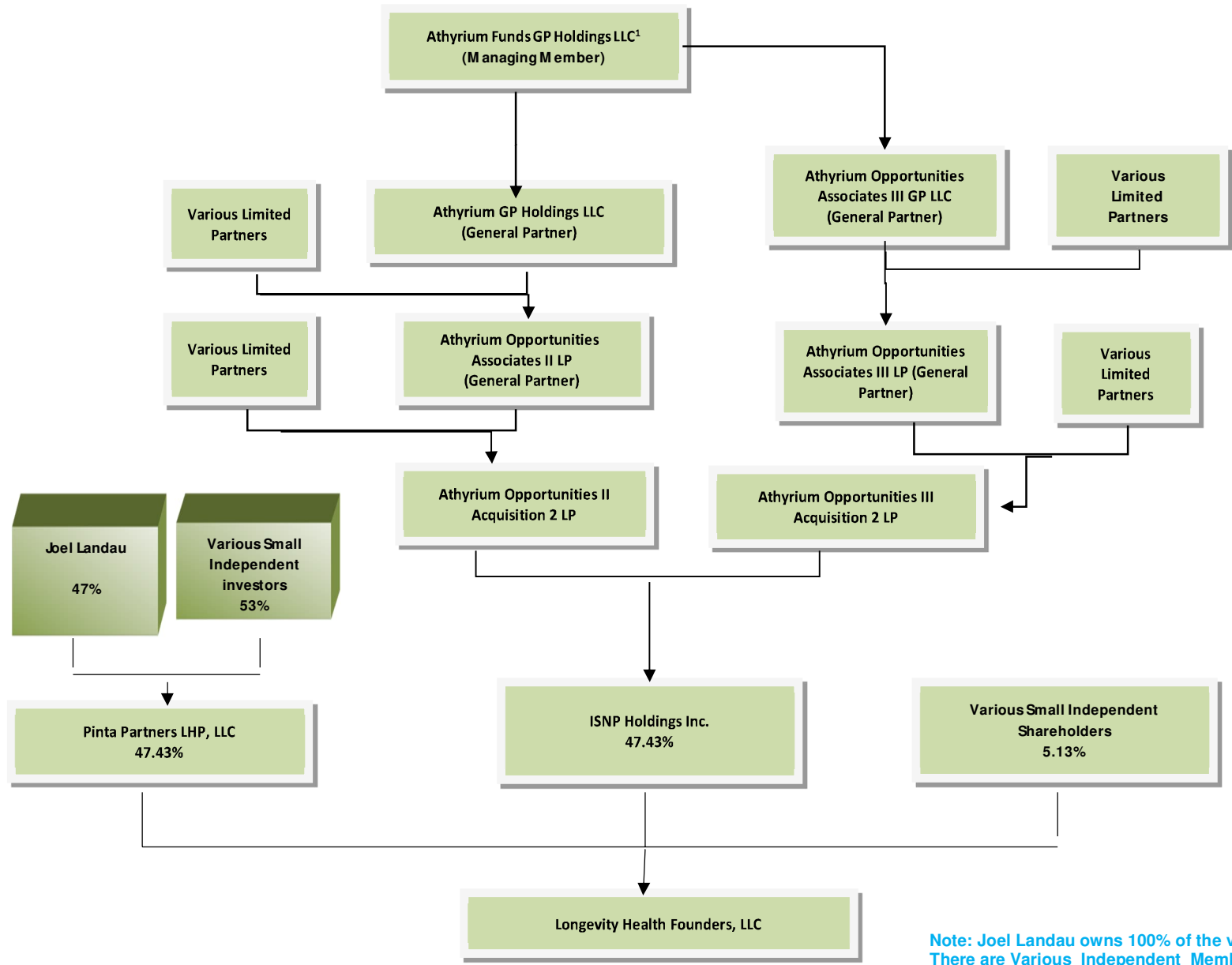
1. L - Licensed or Chartered - Licensed insurance carrier or domiciled RRG 1 4. Q - Qualified - Qualified or accredited reinsurer -
 2. R - Registered - Non-domiciled RRGs - 5. N - None of the above - Not allowed to write business in the state 56
 3. E - Eligible - Reporting entities eligible or approved to write surplus lines in the state -

(b) Explanation of basis of allocation by states, premiums by state, etc

The Company was only licensed in the State of New Jersey at 12/31/2022.

SCHEDULE Y - INFORMATION CONCERNING ACTIVITIES OF INSURER MEMBERS OF A HOLDING COMPANY GROUP

PART 1 - ORGANIZATIONAL CHART



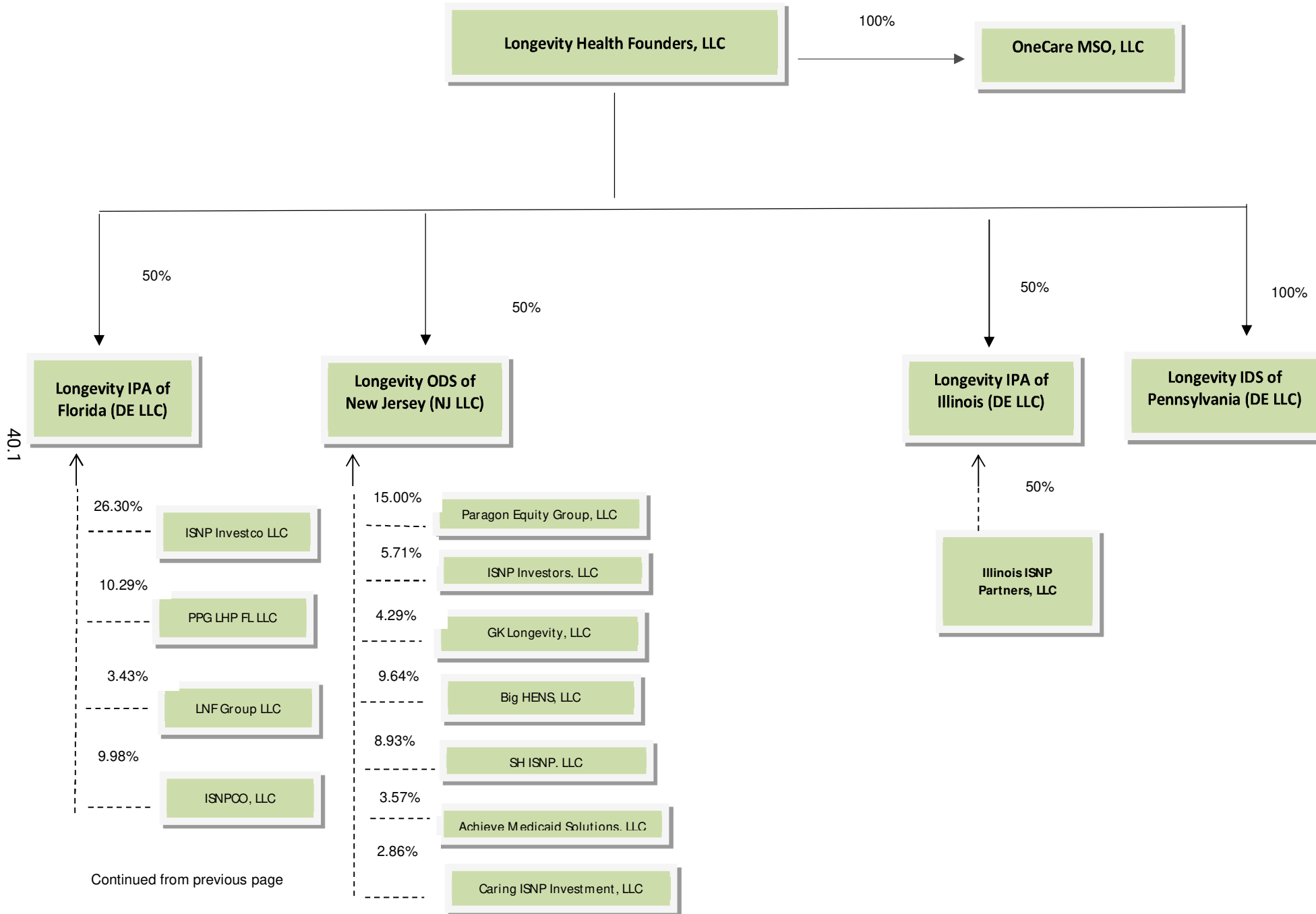
Note: Joel Landau owns 100% of the voting of Pinta. There are Various Independent Members of 53% of Pinta with no votes and no control.

40

To be continued

SCHEDULE Y - INFORMATION CONCERNING ACTIVITIES OF INSURER MEMBERS OF A HOLDING COMPANY GROUP

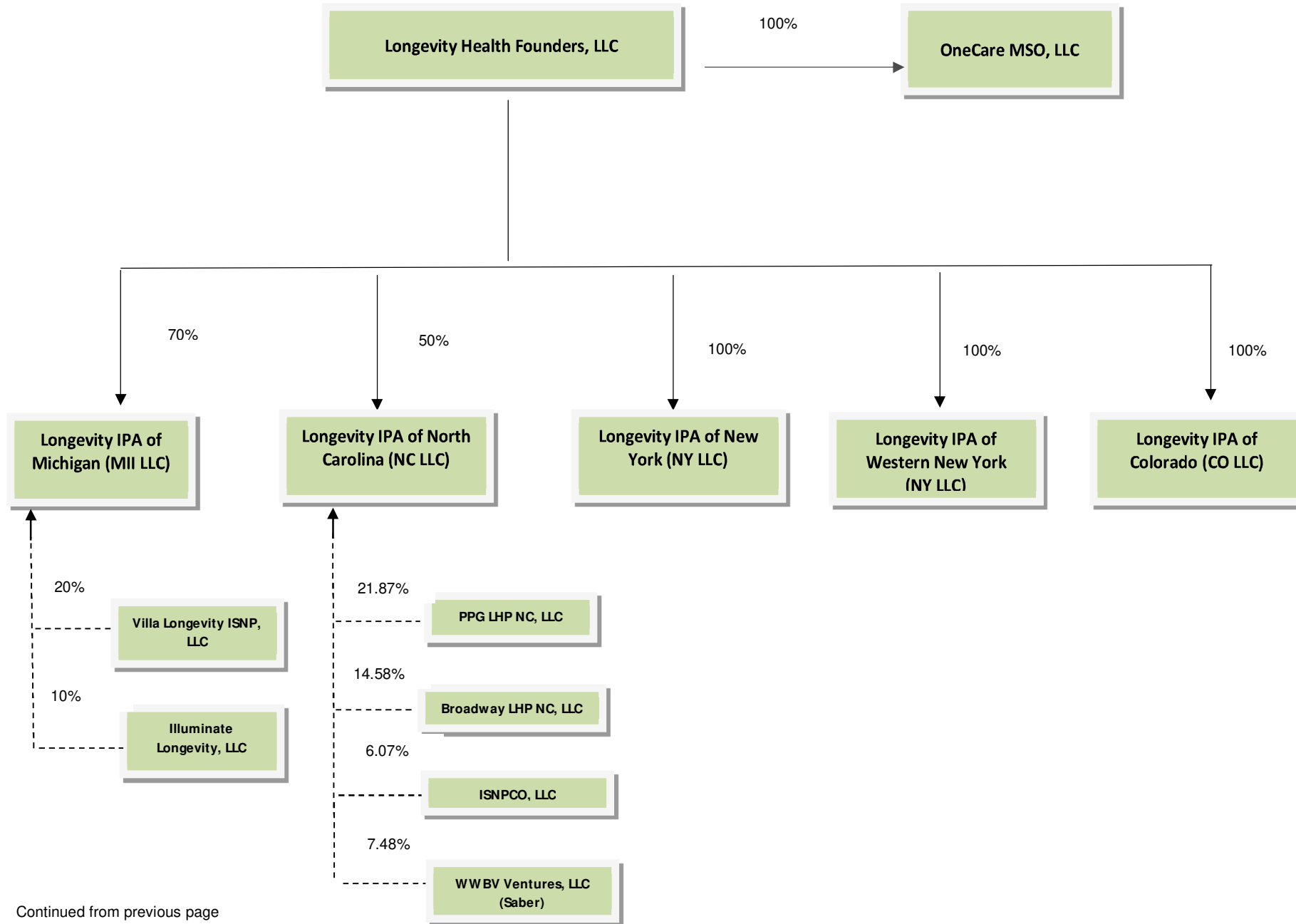
PART 1 - ORGANIZATIONAL CHART



SCHEDULE Y - INFORMATION CONCERNING ACTIVITIES OF INSURER MEMBERS OF A HOLDING COMPANY GROUP

PART 1 - ORGANIZATIONAL CHART

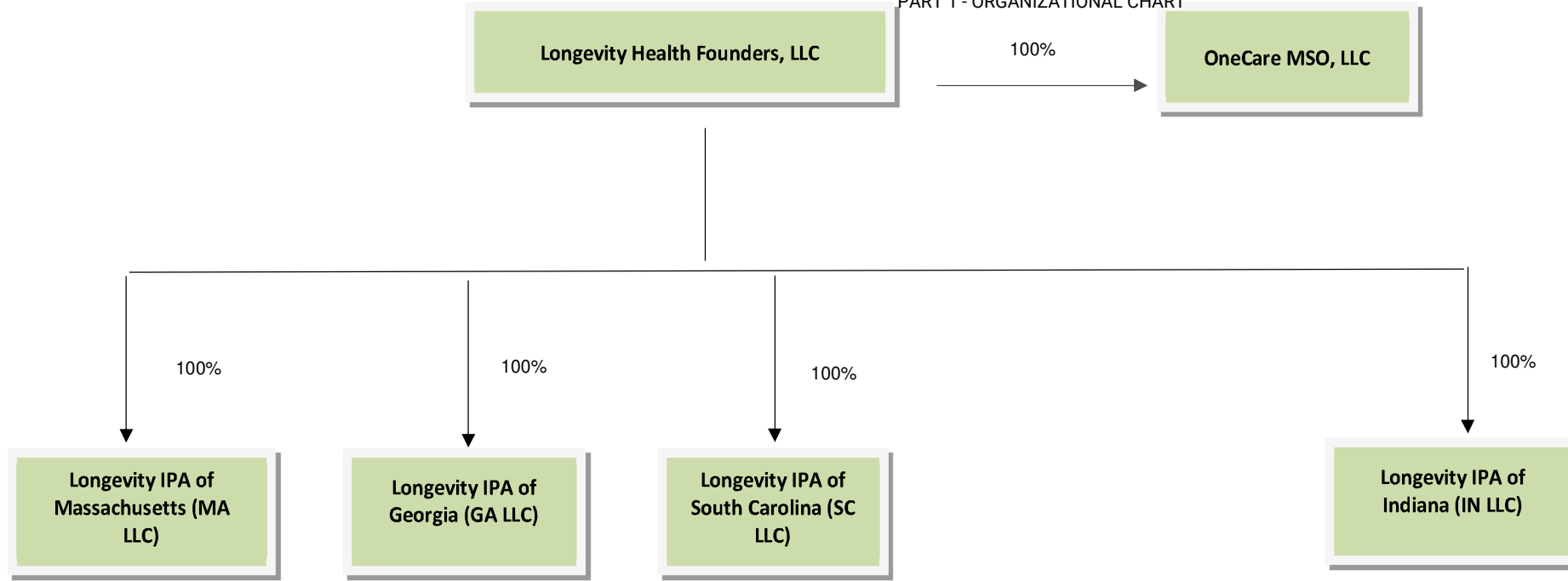
40.2



Continued from previous page

SCHEDULE Y - INFORMATION CONCERNING ACTIVITIES OF INSURER MEMBERS OF A HOLDING COMPANY GROUP

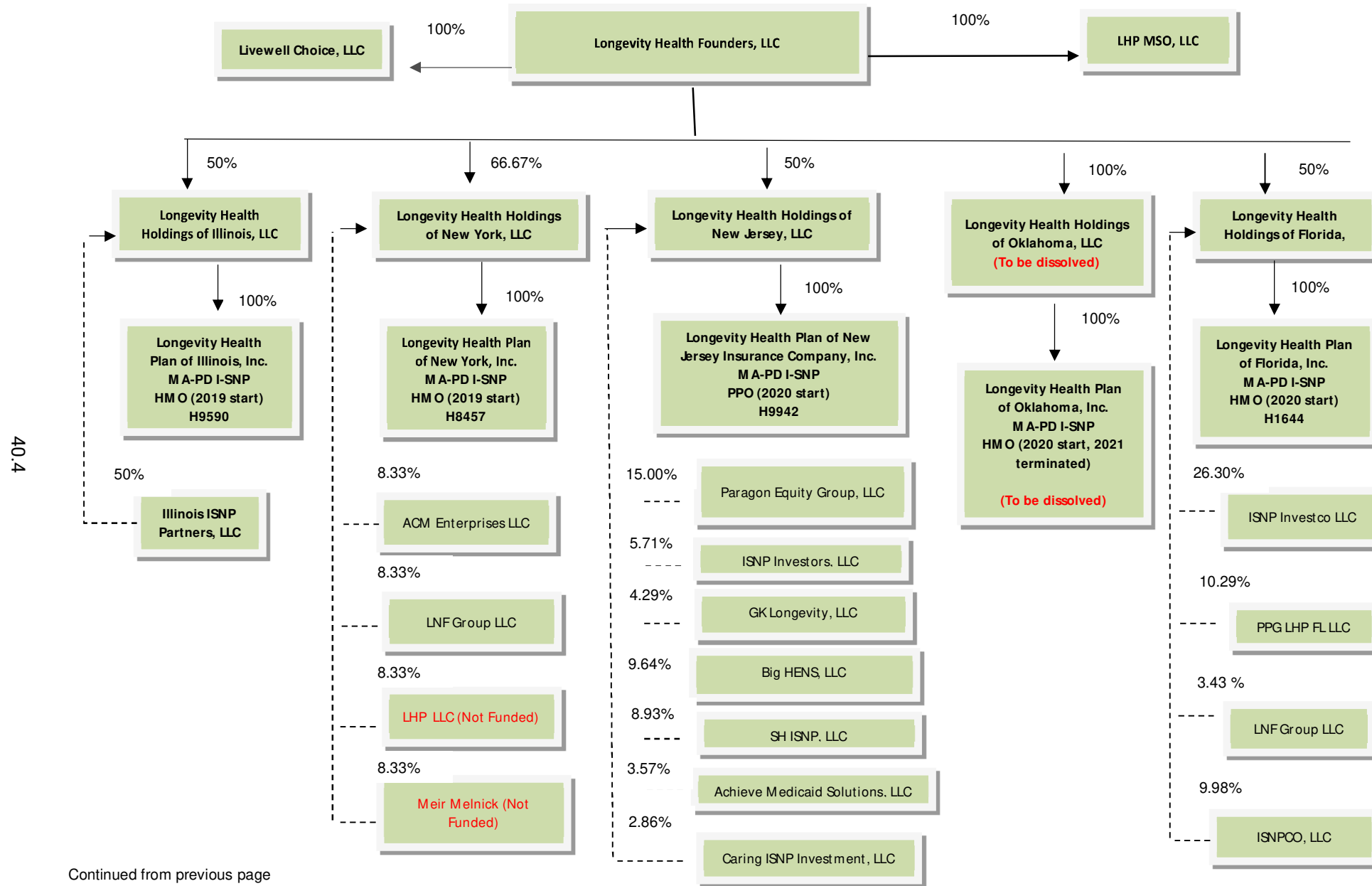
PART 1 - ORGANIZATIONAL CHART



40.3

SCHEDULE Y - INFORMATION CONCERNING ACTIVITIES OF INSURER MEMBERS OF A HOLDING COMPANY GROUP

PART 1 - ORGANIZATIONAL CHART

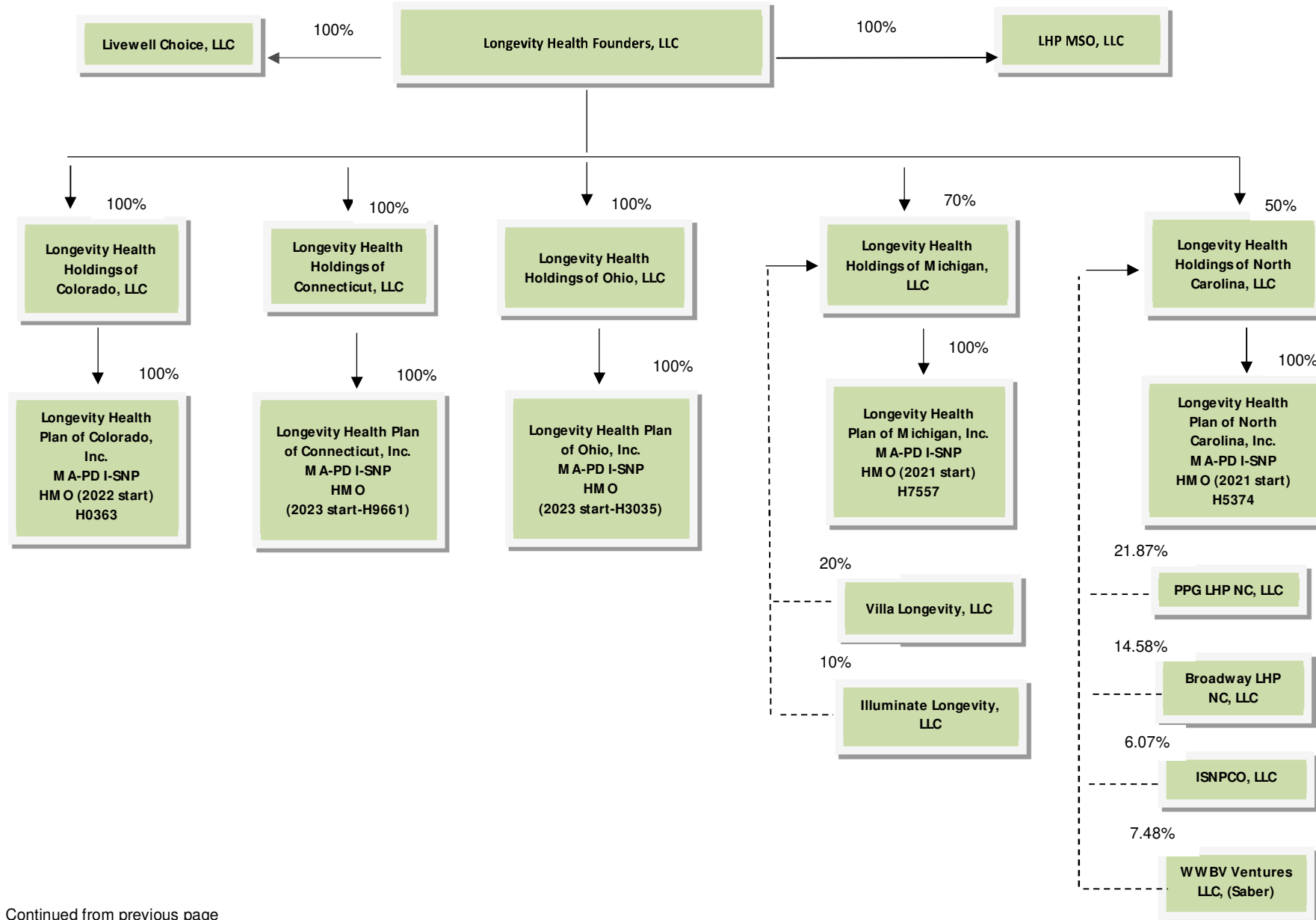


40.4

Continued from previous page

SCHEDULE Y - INFORMATION CONCERNING ACTIVITIES OF INSURER MEMBERS OF A HOLDING COMPANY GROUP

PART 1 - ORGANIZATIONAL CHART



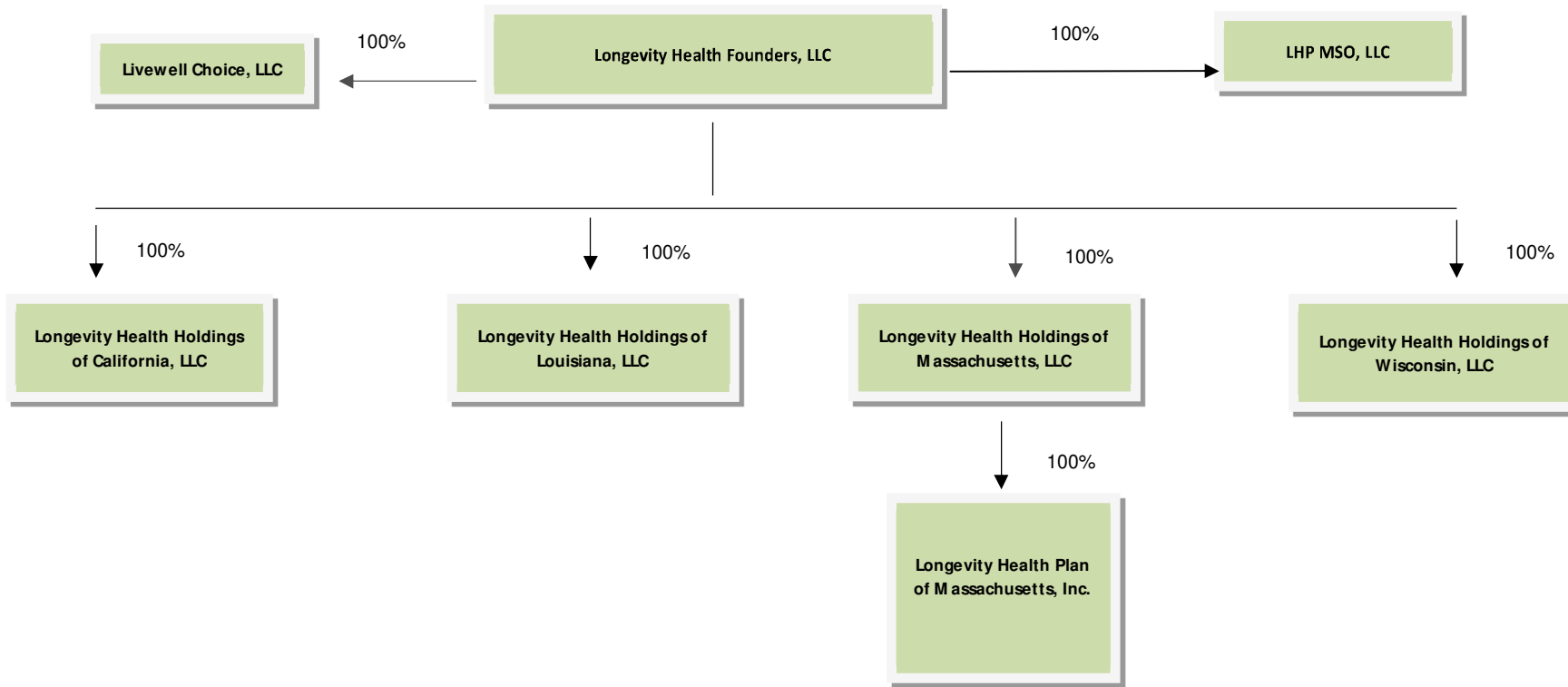
40.5

Continued from previous page

Updated as of December 31, 2022

SCHEDULE Y - INFORMATION CONCERNING ACTIVITIES OF INSURER MEMBERS OF A HOLDING COMPANY GROUP

PART 1 - ORGANIZATIONAL CHART

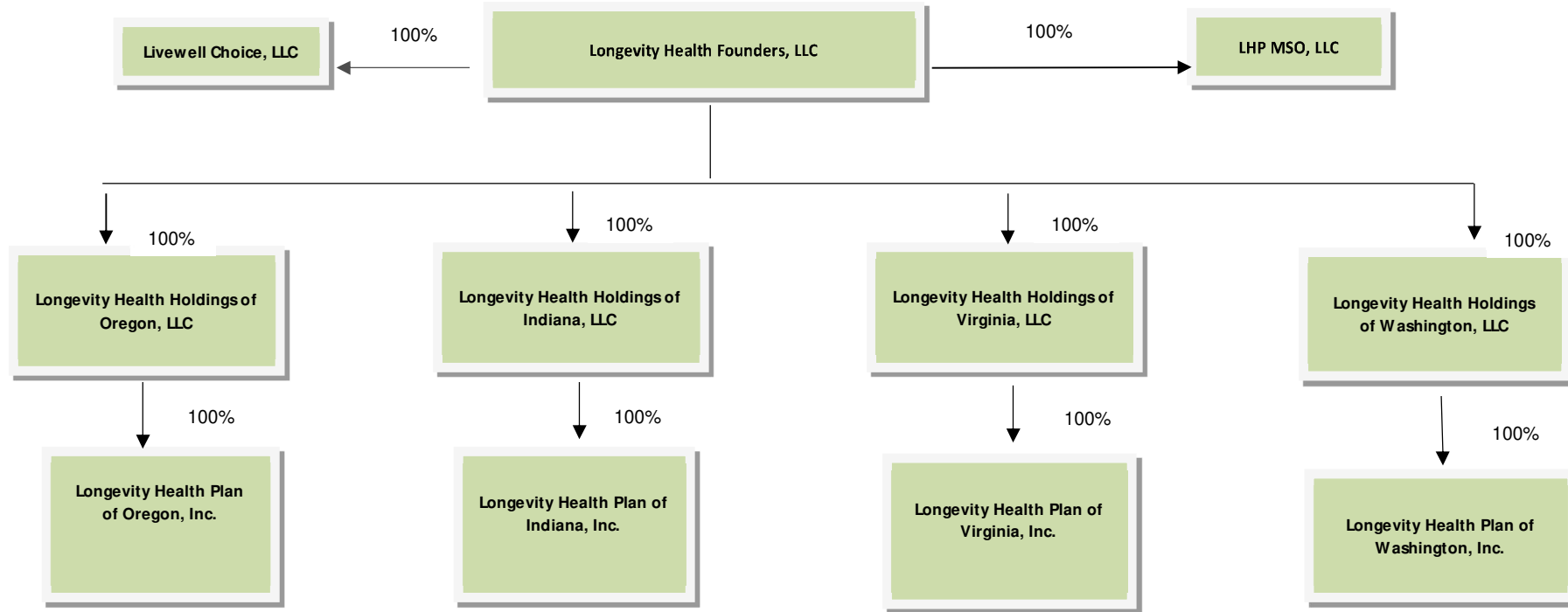


40.6

Continued from previous page

SCHEDULE Y - INFORMATION CONCERNING ACTIVITIES OF INSURER MEMBERS OF A HOLDING COMPANY GROUP

PART 1 - ORGANIZATIONAL CHART



40.7

Continued from previous page