

DRBC CY2012 Water Audit Program Summary

10/22/2013

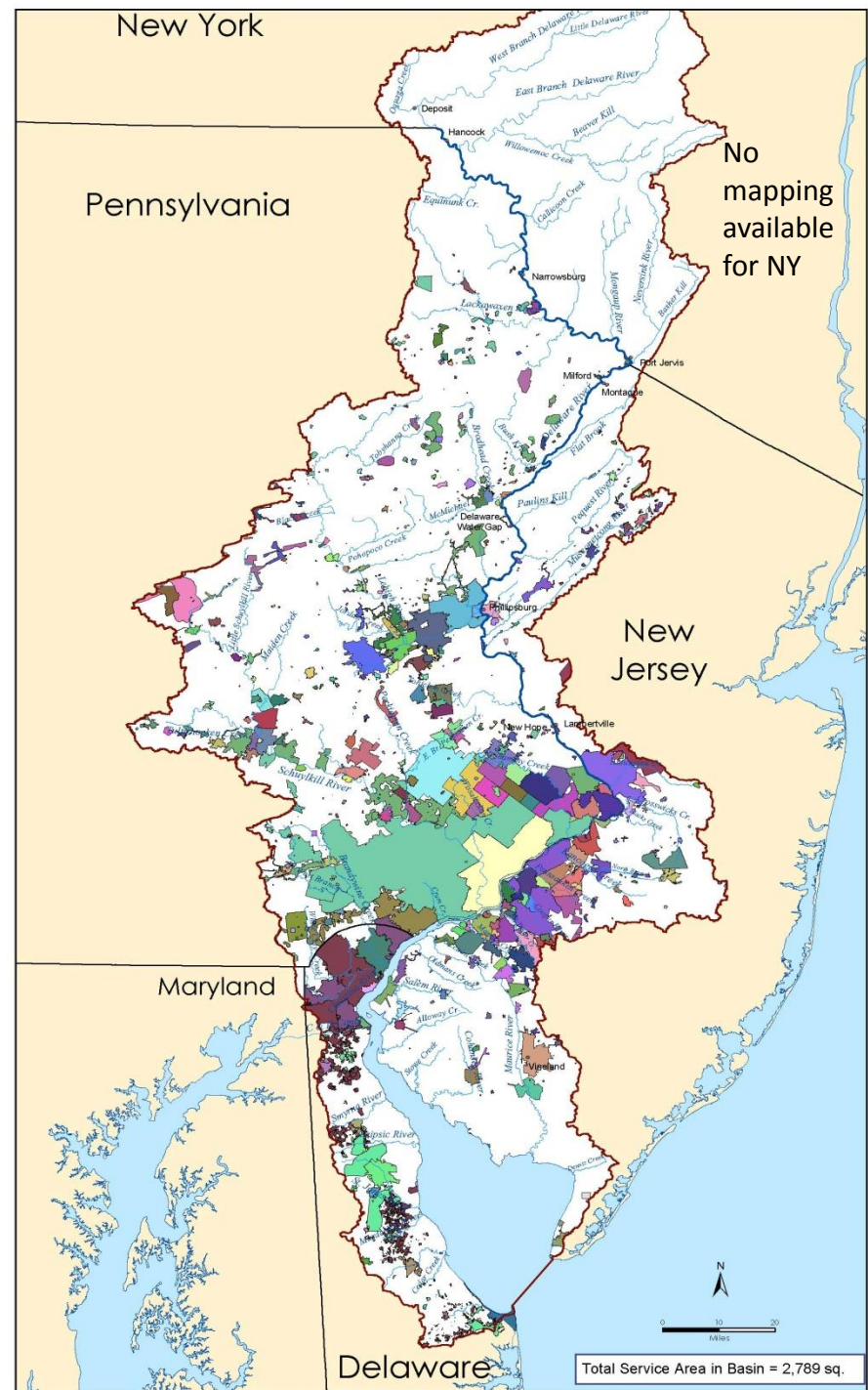
DRBC Water Management
Advisory Committee

David Sayers
Planning and IT Branch

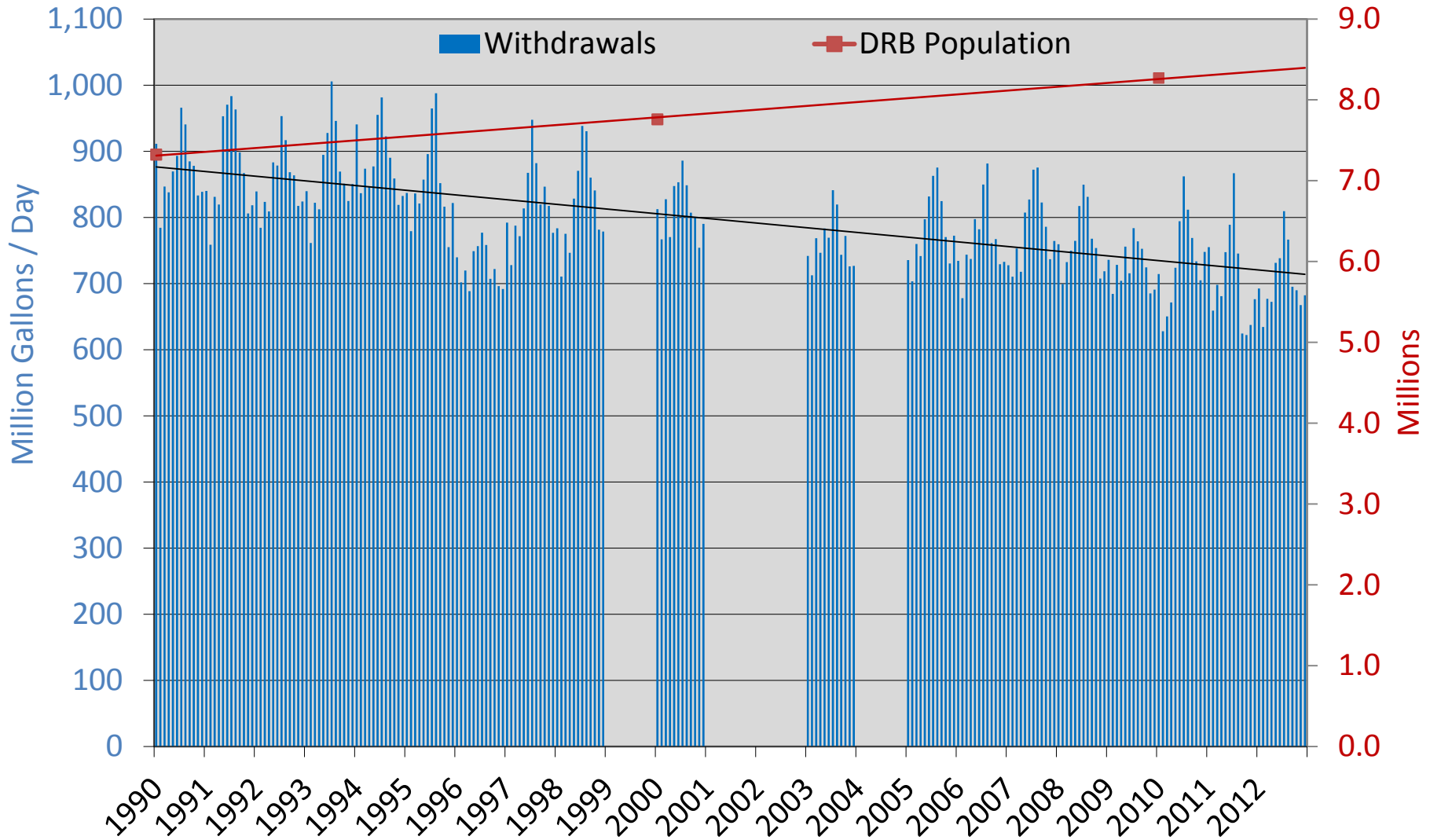


Water Service area in the Delaware River Basin

- Approx. 21% of Basin covered by service area
- 80% of basin residents (6.7 million customers)
- Total PWS withdrawals:
~865 MGD
- 2nd largest water use sector in the Basin
- Approx. 300 systems subject to Water Audit Requirement



Aggregated Withdrawals of 40 Public Water Supply Systems in the DRB (Million Gallons/Day)





DRBC Rule change

~~Unaccounted for Water~~

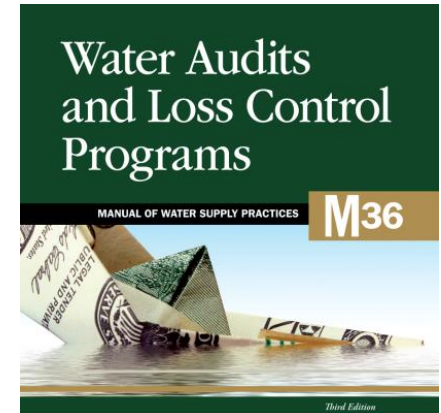
IWA/AWWA Water Audit
Methodology



AWWA Resources

- Recent Water Audit manual published
- Free interactive audit software available
- Data grading capability assesses the validity of the input data
- Instructions, definitions provided in software
- DRBC member of AWWA Water Loss Control Committee

www.awwa.org



American Water Works Association
 The Authoritative Resource on Safe Water™

AWWA WLCC Free Water Audit Software: Reporting Worksheet
 Copyright © 2010, American Water Works Association. All Rights Reserved. WAS v4.2

Water Audit Report For: _____
 Reporting Year: _____

Please enter data in the white cells below. Where available, metered values should be used; if metered values are unavailable please estimate a value. Indicate your confidence in the accuracy of the input data by grading each component (1-10) using the drop-down list to the left of the input cell. Hover the mouse over the cell to obtain a description of the grades

PLEASE CHOOSE REPORTING UNITS FROM THE INSTRUCTIONS SHEET BEFORE ENTERING DATA

WATER SUPPLIED << Enter grading in column 'E'

Volume from own sources:	[7]	
Master meter error adjustment (enter positive value):	[7]	
Water imported:	[7]	
Water exported:	[7]	
WATER SUPPLIED:		0.000

AUTHORIZED CONSUMPTION

Billed metered:	[7]	
Billed unmetered:	[7]	
Unbilled metered:	[7]	
Unbilled unmetered:	[7]	0.000
AUTHORIZED CONSUMPTION:		0.000

Default option selected for Unbilled unmetered - a grading of 5 is applied but not displayed

WATER LOSSES (Water Supplied - Authorized Consumption) 0.000

Apparent Losses

Unauthorized consumption:	[7]	0.000
Customer metering inaccuracies:	[7]	0.000
Systematic data handling errors:	[7]	0.000
Apparent Losses:		0.000

Default option selected for unauthorized consumption - a grading of 5 is applied but not displayed

Real Losses (Current Annual Real Losses or CARL)

Real Losses = Water Losses - Apparent Losses:	[7]	0.000
WATER LOSSES:		0.000

NON-REVENUE WATER 0.000

Click here [?] for help using option buttons below

Use buttons to select percentage of water supplied OR value

Enter a percentage less than 10% in the red cell (J42), or select Value option

Instructions | Reporting Worksheet | Water Balance | Grading Matrix | Service Connection Diagram | Definitions | Loss Control Planning | Ex. Audit 1 (Million Gallons)



Implementation Summary

- 2006-9:** Water Loss Accountability (WMAC)
- 2009:** Resolution 2009-1 Resulting in **water code revisions**
- 2009-11:** Outreach / Voluntary Implementation
DRBC workshop and webpages
- 2012:** DRBC Database preparation
- 2013:** 2012 Calendar year reports received
Initial evaluation of audit results

Audit Data Collection

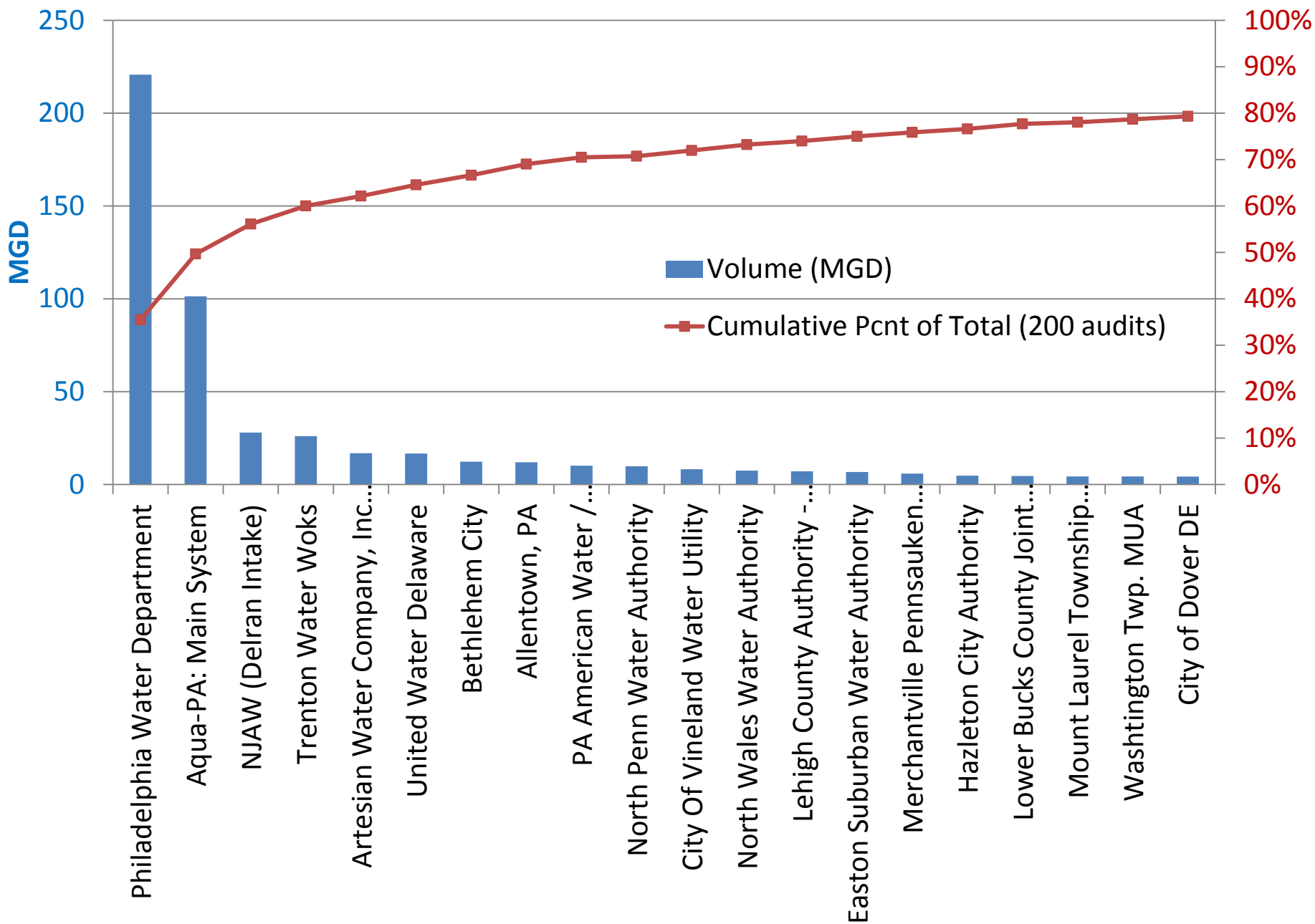
- Team Effort!
- DRBC Database utilized to:
 - Identify regulated entities
 - Track docket requirements
 - Track contact details for outreach
 - Track receipt of audits
- Provided opportunity to clean-up database/dockets
- Electronic reporting required (AWWA audit format)
- Tools developed for audit data management
- Significant staff effort to track down outstanding audits and provide assistance on completing the audit

Water Audit Program Status: Oct 2013

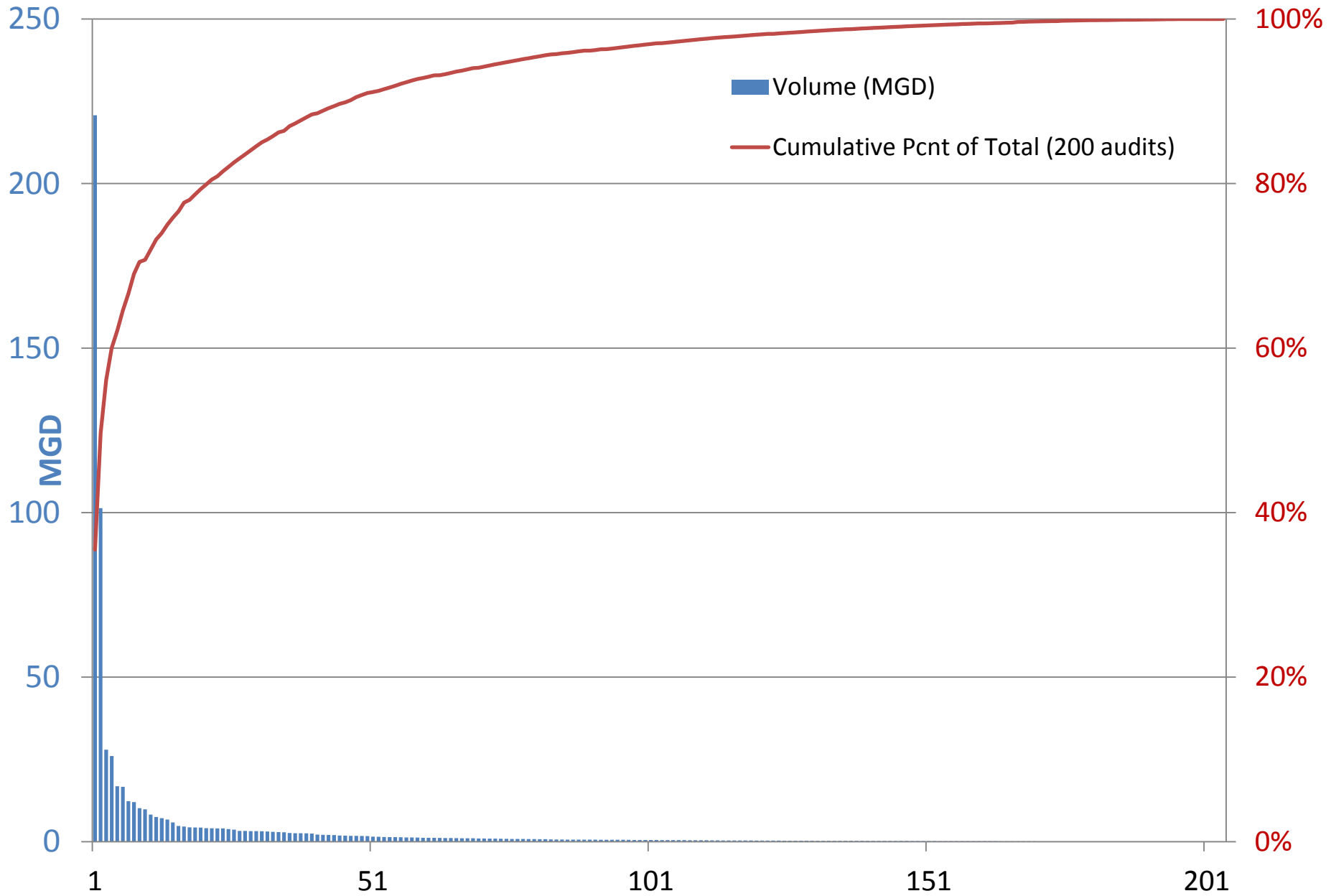
- Reporting deadline: March 31, 2013
- ~ 140 audits submitted by deadline
- Significant follow up required by staff
- ~300 water audits required from docket holders
- ~200 water audits received and suitable for analysis
- Audits received account for ~665MGD (77% of total PWS volume)

Water Audit Data Analysis: CY2012 Results...

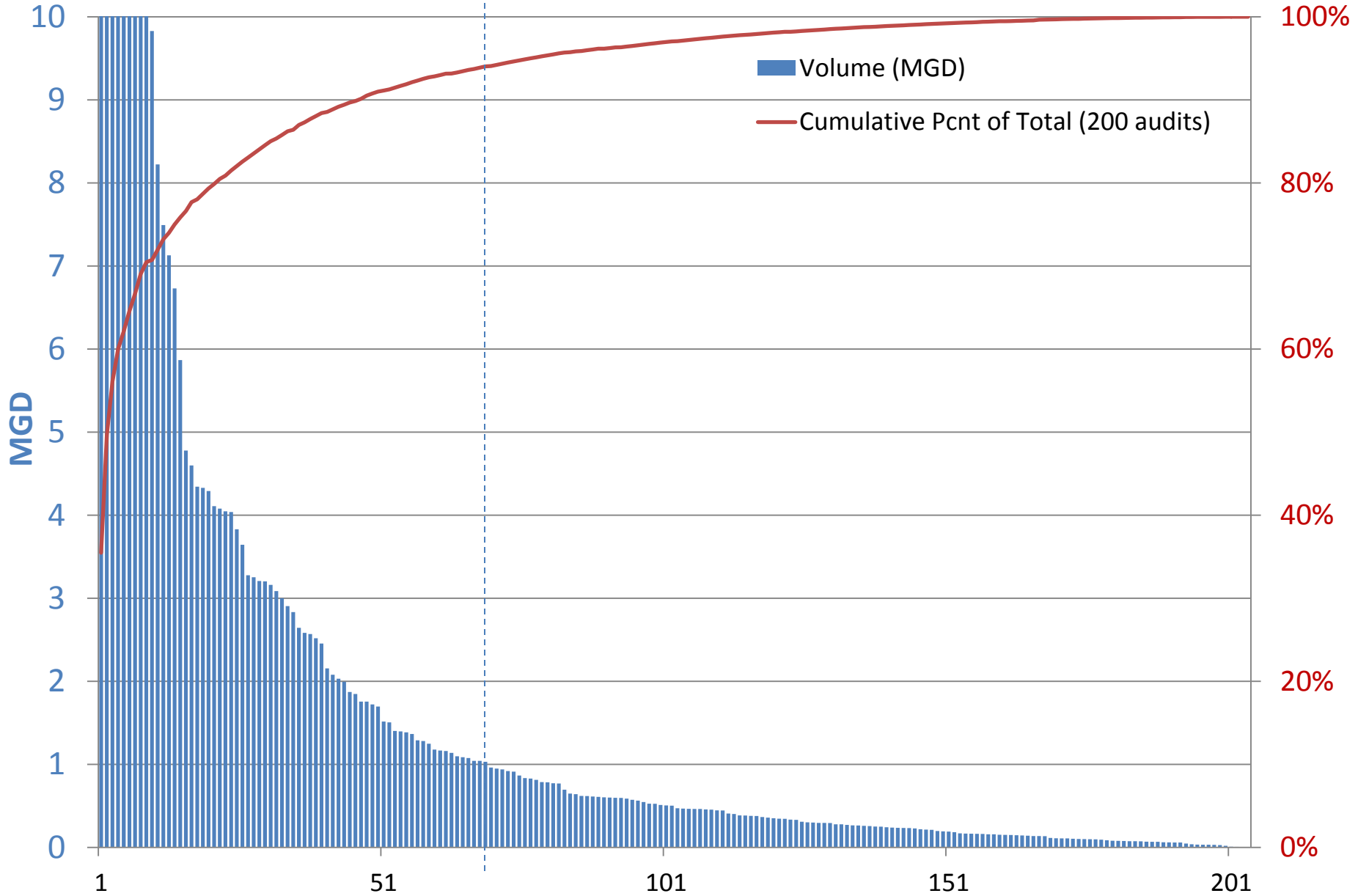
Water Supplied in CY2012 (MGD): Largest 20 systems



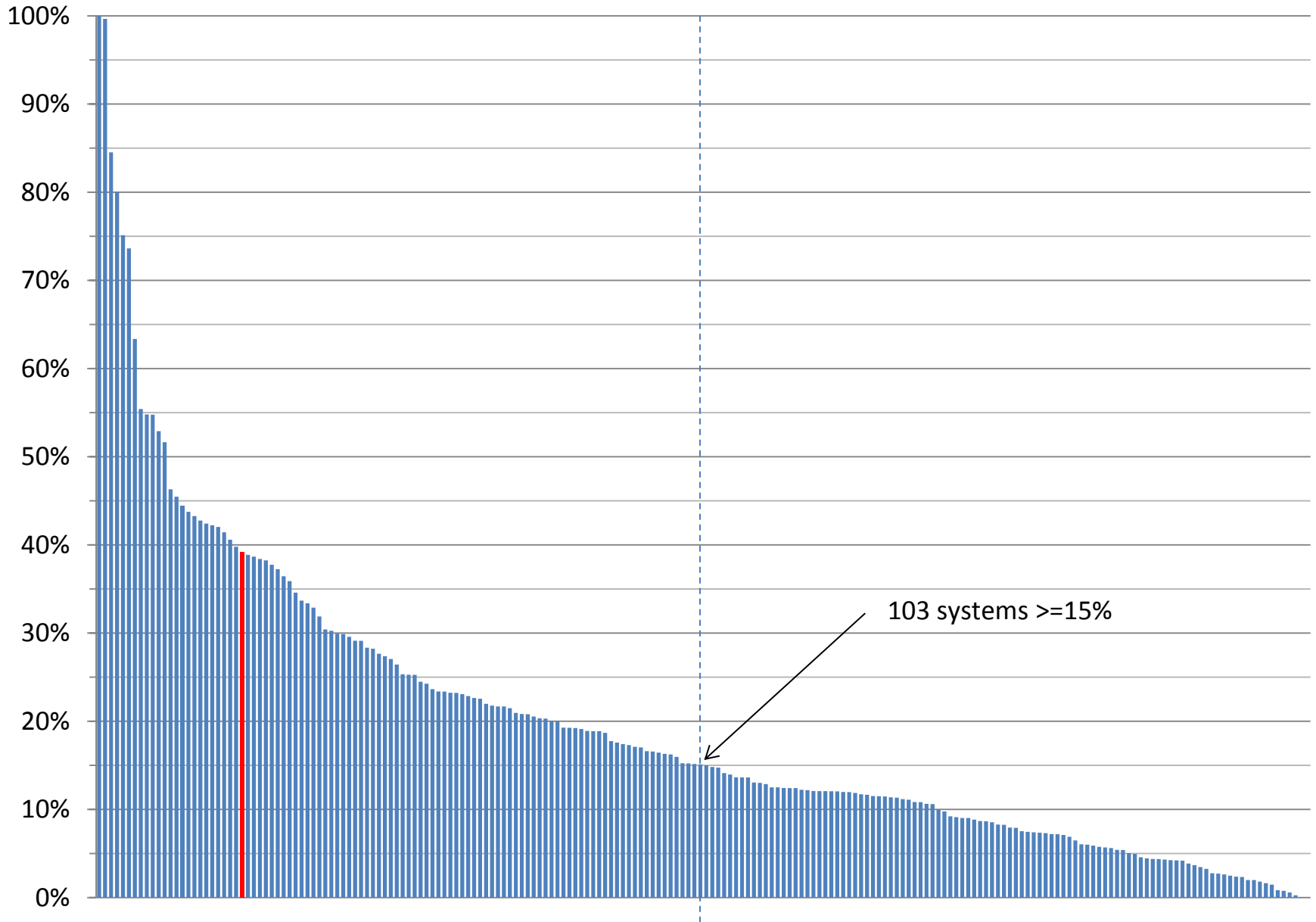
Water Supplied CY2012 (MGD); n of systems = 204



Water Supplied CY2012 (MGD); n of systems = 204

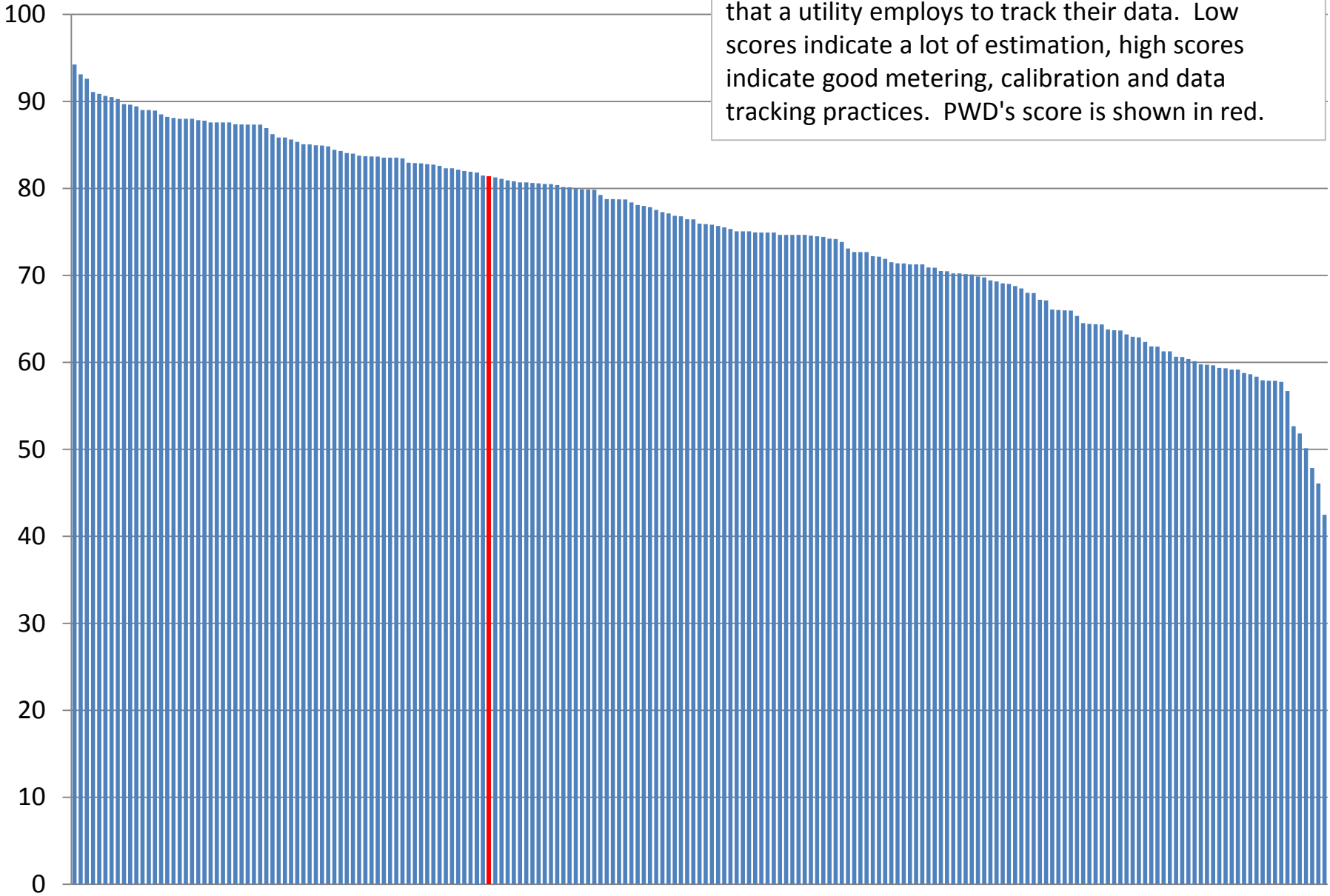


Non-Revenue Water as % of Water Supplied (n=204; CY2012)



Audit Grading Score (n=204; CY2012)

The grading score reflects the kinds of practices that a utility employs to track their data. Low scores indicate a lot of estimation, high scores indicate good metering, calibration and data tracking practices. PWD's score is shown in red.



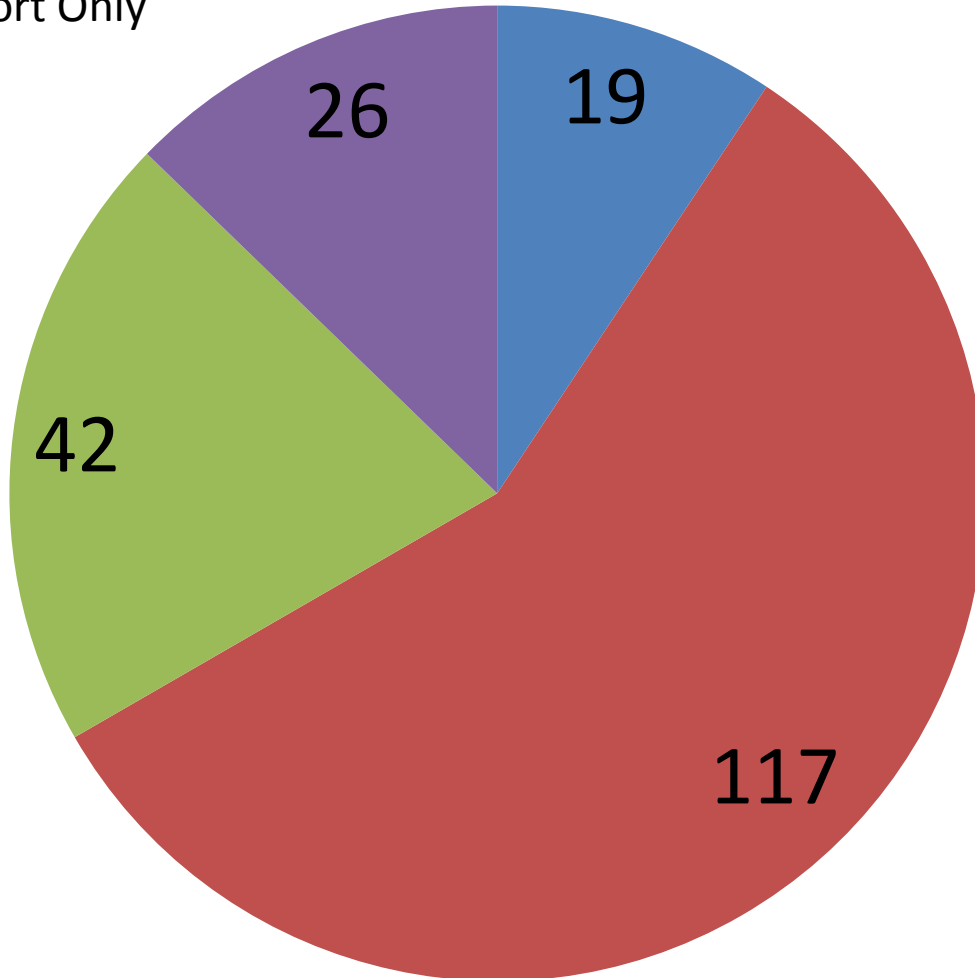
■ Import and Export

■ Neither

■ Import Only

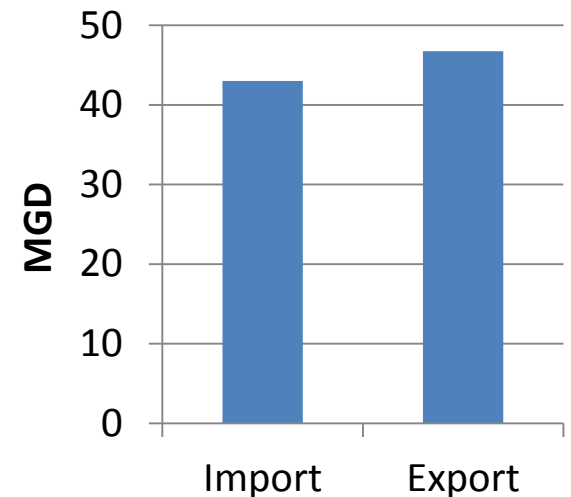
■ Export Only

Interconnections: System Imports and Exports (n=204; CY2012)

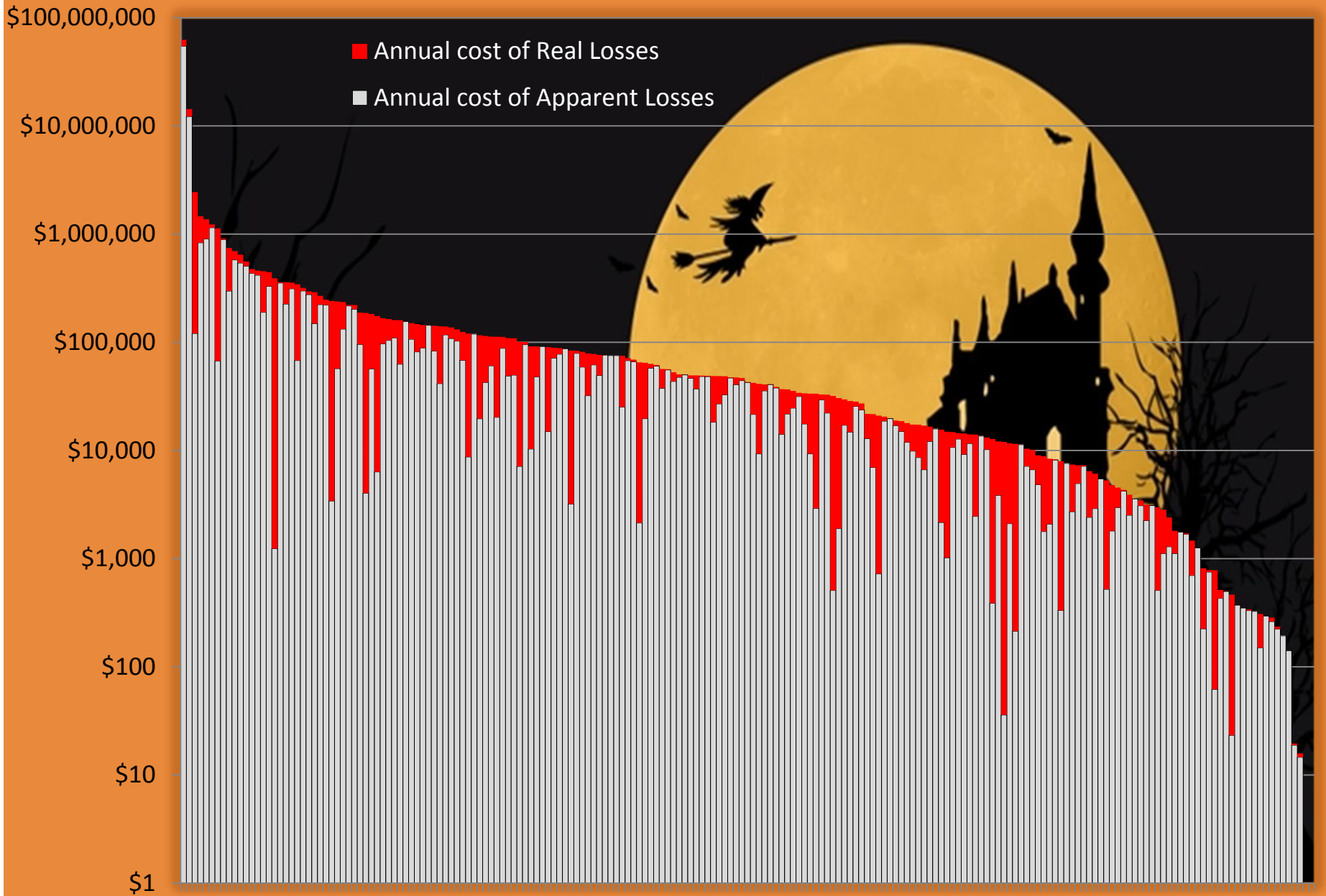


Pie chart shows a count of systems having, or not having, imports and exports (at the system level). This is NOT a basin boundary import / export analysis but indicates degree to which water moves between purveyors' systems (interconnections).

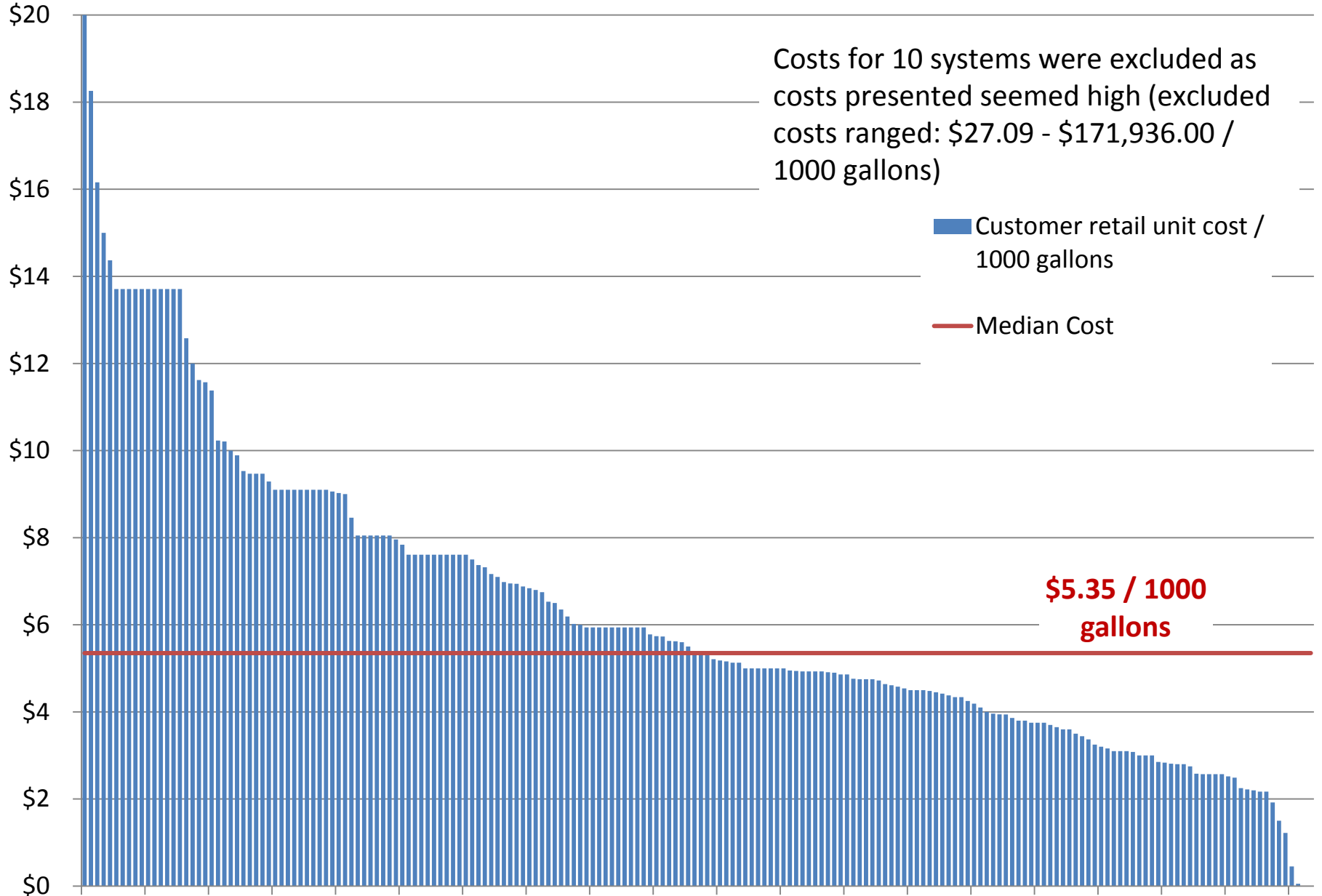
The bar chart shows the data by volume, aggregated for all systems



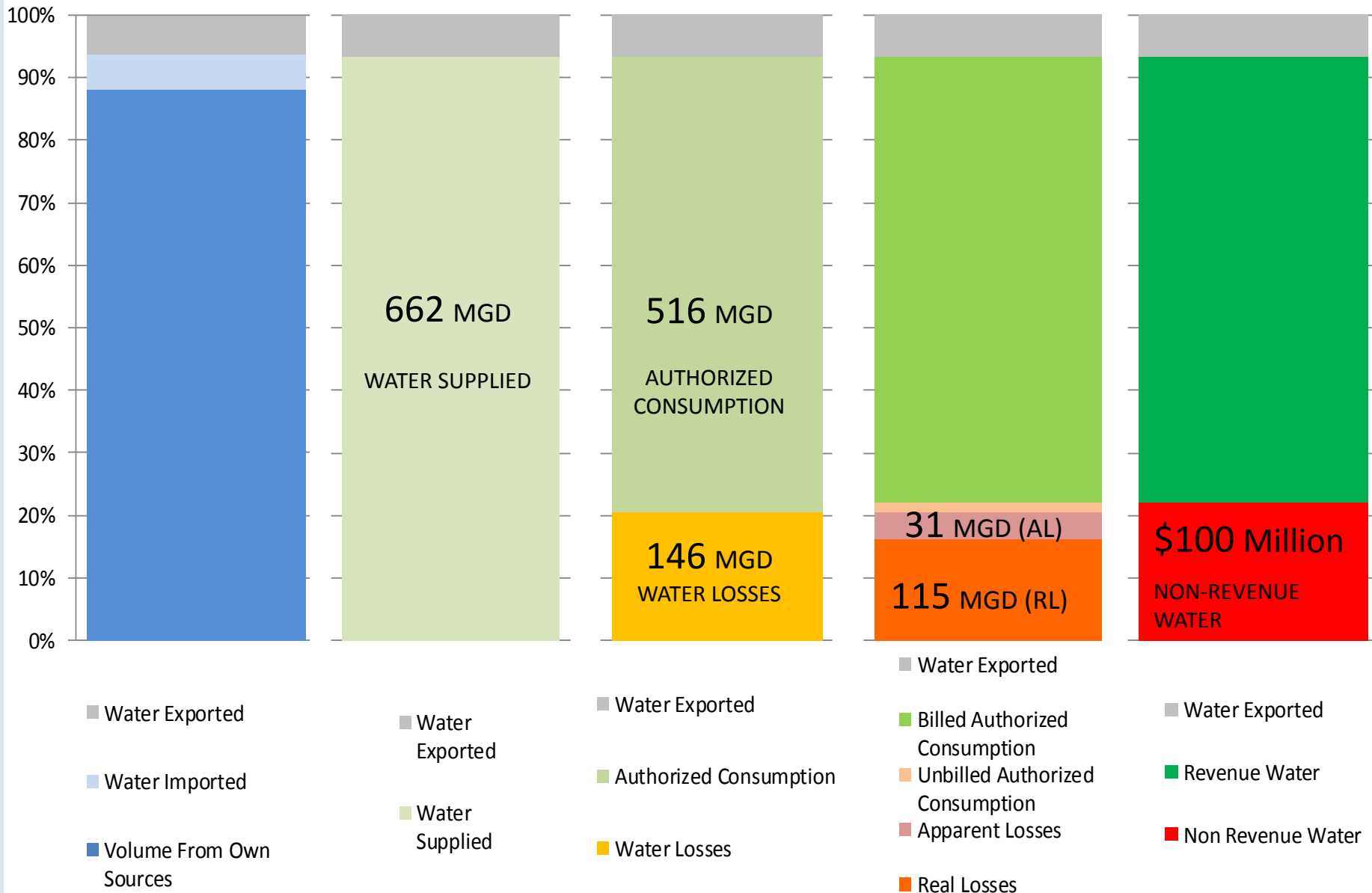
Annual Cost of Water Losses (n=199; CY2012)



Average Customer Retail Unit Cost (\$/1000gallons) (n=194; CY2012)



The CY2012 DRB Water Audit / Water Balance (aggregate of 204 audits)



Water Audits Year One: What did we achieve?

- Evolution not Revolution
- Docket database significantly cleaned up:
 - Expired dockets renewed
 - Better understanding of multi-system utilities
- Systems are performing the AWWA audit
- Docket holders recognize DRBC is looking at this issue
- One utility “found a Marina” (apparent loss)
- DRBC implemented a new program with limited resources

Next steps (short term)

- Conclude data collection for CY2012 reporting
- Prepare an article summarizing results/experience
- Data Validation / follow up for anomalies (how to prioritize?)
- Prepare for CY2013 reporting
- Provide additional guidance for common errors (enhance FAQs / You Tube?)
- Prioritize systems by size (as per EPA / PUC)?

Next steps (longer term)

- Continue annual program / build dataset
- Pursue metrics or best practice?
- WMAC to provide recommendations for cont'd outreach / regulatory follow up
- Funding??? / SRFs / State Partners
- Coordinate with other programs:
 - State Partners
 - PAPUC
 - Georgia model