

# Delaware River Basin Commission

## Groundwater Management- General Basin Areas

*David Kovach*  
*Project Review Section*  
*Supervisor*

10/22/2015



**Delaware River Basin Commission**

DELAWARE • NEW JERSEY  
PENNSYLVANIA • NEW YORK  
UNITED STATES OF AMERICA

# Compact Section 3.8 Review of Projects

**RPP 2.3.2 Concept of 3.8.** Section 3.8 is intended to protect and preserve the integrity of the *Comprehensive Plan*. This section of the *Compact* provides:

“No project having a substantial effect on the water resources of the basin shall hereafter be undertaken by any person, corporation or governmental authority unless it shall have been first submitted to and approved by the Commission, subject to the provisions of Sections 3.3 and 3.5”....

# Rules of Practice and Procedure (RPP) Reviewable Groundwater Projects

**2.3.5.B.2.** Withdrawal of ground water;

**2.3.5.B.6.** Discharge of pollutants into surface or ground waters of the Basin;

**2.3.5.B.10.** Change in land cover on major ground water infiltration areas;



# RPP “No Review” Thresholds

**2.3.5.A.2.** A withdrawal from ground water for any purpose when the daily average gross withdrawal during any 30 consecutive day period does not exceed 100,000 gallons;

**2.3.5.A.5.** The construction of new facilities or alteration or addition to existing facilities for the direct discharge to surface or ground waters of industrial wastewater having design capacity of less than 10,000 gallons per day in the drainage area to Outstanding Basin Waters and Significant Resource Waters or less than 50,000 gallons per day elsewhere in the Basin; except where such wastewater contains toxic concentrations of waste materials;

**2.3.5.A.6.** A change in land cover on major ground water infiltration areas when the amount of land that would be altered is less than three square miles;

# DRBC Groundwater Quality



## **WC 3.40.7.B. Nondegradation of Ground Waters**

It is the policy of the Commission to prevent degradation of ground water quality.



**RPP 2.3.7.A.** The Commission will rely on the appropriate agency in each state to review and regulate the potability of all public water supplies. Applications before the Commission should address the impact of the withdrawal, use and disposal of water on the water resources of the Basin.

# Applicable DRBC Groundwater Regulation 18CFR Part 410

CODE OF FEDERAL REGULATIONS



CFR

Revised as of January 1, 2014

OFFICE OF THE FEDERAL REGISTER

- 2.10 Conservation
- 2.20 Underground Waters
- 2.30 Imports and Exports
- 2.40 Regionalization
- 2.50 Water Metering
- 2.350 Wetlands Protection
- 3.40 Groundwater-Basinwide

# Groundwater Withdrawal Projects

- Require Hydrogeologic Reports, 48 hour pumping tests and monitoring of wells and surface water bodies
- Approvals include Allocation Limits
- Require Well registration, metering, and reporting
- Conservation requirements
  - Drought Management Plans >1 mgd
  - Water Audits, leak detection, etc.
- Require Interference Monitoring and/or Interference condition
- Are approved by Commissioners at Public hearing/meeting



# Pumping Test Protocols

## New York

### **Pumping Test Procedures For Water Withdrawal Applications**

NYSDEC Appendix 10, TOGS 3.2.1  
(Water Withdrawal Supply Permit  
Program Application Processing)  
February 2015

## Pennsylvania

### **Aquifer Testing Guidance for Public Water Systems**

PADEP

Bureau of Safe Drinking Water

Doc. No. 394-2125-001, April 12, 2014

## DRBC

### **Groundwater Withdrawal Application Item 19. Final Hydrogeologic Report**

Includes pumping test procedures  
June, 2012





# Administrative Agreements

DRBC and States entered into administrative agreements where most groundwater withdrawals and discharges are handled through the state process.



Delaware Agreement Effective July 28, 2010 and Amended May 8, 2013



New Jersey Agreement Effective December 18, 2009 and Amended May 8, 2013

# Baseflow Estimates in Watersheds Outside of GWPA

## Estimated Ground-Water Availability in the Delaware River Basin, 1997-2000

U.S. Geological Survey Scientific Investigations Report 2006-5125

By Ronald A. Sloto and Debra E. Buxton

147 DRB Watersheds

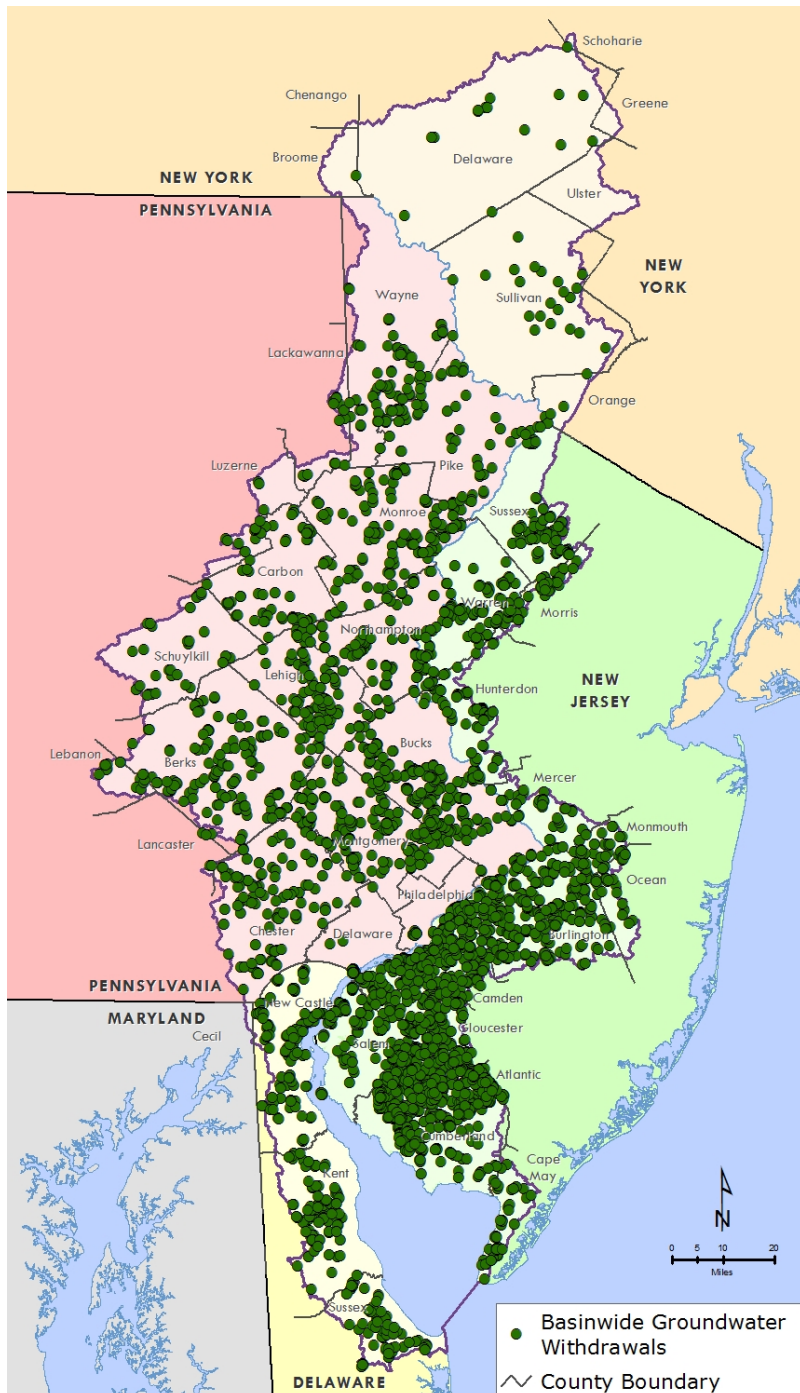
109 underlain by fractured rocks

38 underlain by unconsolidated surficial aquifers of coastal plain

Does not include surficial valley fill aquifers (e.g. NYS principle & primary)

# DRB Groundwater Withdrawals Next Steps

- Re-run Groundwater Sufficiency Analysis with more recent data (2010 data?)
- Revise eApplication for water withdrawal
- Up-date pumping test procedures
- Up-date AA's



# Any Questions?

David Kovach, Project  
Review Section Supervisor

Delaware River Basin  
Commission

[Davidkovach@drbc.nj.gov](mailto:Davidkovach@drbc.nj.gov)

609-477-7264

Photos by Eric Engle

