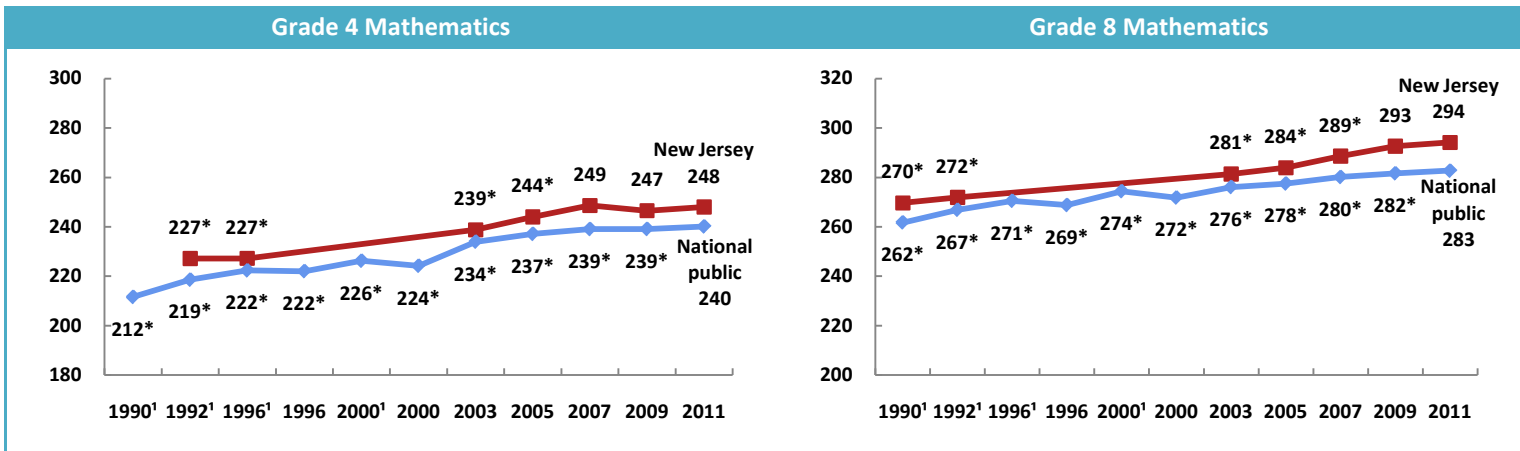


Grades 4 and 8 Mathematics Results: New Jersey

Mathematics score trends



- ★ New Jersey's grade 4 mathematics score was significantly higher in 2011 than in 1992¹; it was not significantly different than in 2009.
- ★ New Jersey's grade 8 mathematics score was significantly higher in 2011 than in 1990¹; it was not significantly different than in 2009.

Achievement-level results

Grade 4	1990 ¹	1992 ¹	1996 ¹	2000 ¹	2000	2003	2005	2007	2009	2011
Below Basic	‡	32*	32*	‡	‡	20*	14*	10	12	11
At or above Basic	‡	68*	68*	‡	‡	80*	86*	90	88	89
At or above Proficient	‡	25*	25*	‡	‡	39*	45*	52	49	51
At Advanced	‡	2*	3*	‡	‡	5*	8	9	9	10
Grade 8	1990 ¹	1992 ¹	1996 ¹	2000 ¹	2000	2003	2005	2007	2009	2011
Below Basic	42*	38*	‡	‡	‡	28*	26*	23*	20	18
At or above Basic	58*	62*	‡	‡	‡	72*	74*	77*	80	82
At or above Proficient	21*	24*	‡	‡	‡	33*	36*	40*	44	47
At Advanced	3*	3*	‡	‡	‡	6*	9*	10*	14	14

- ★ The percentage of New Jersey's grade 4 students who were at or above *Basic* in mathematics was significantly higher in 2011 than in 1992¹; it was not significantly different than in 2009.
- ★ The percentage of New Jersey's grade 4 students who were at or above *Proficient* in mathematics was significantly higher in 2011 than in 1992¹; it was not significantly different than in 2009.
- ★ The percentage of New Jersey's grade 8 students who were at or above *Basic* in mathematics was significantly higher in 2011 than in 1990¹; it was not significantly different than in 2009.
- ★ The percentage of New Jersey's grade 8 students who were at or above *Proficient* in mathematics was significantly higher in 2011 than in 1990¹; it was not significantly different than in 2009.

¹ Accommodations not permitted.

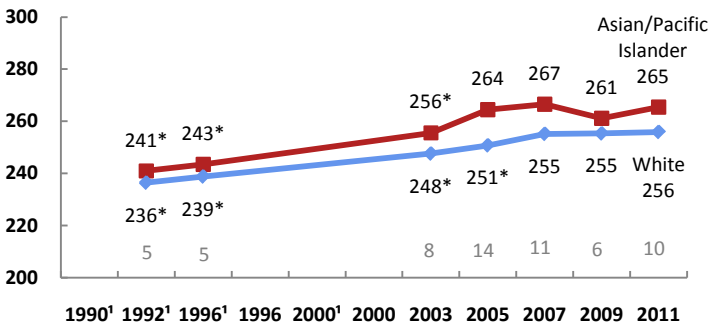
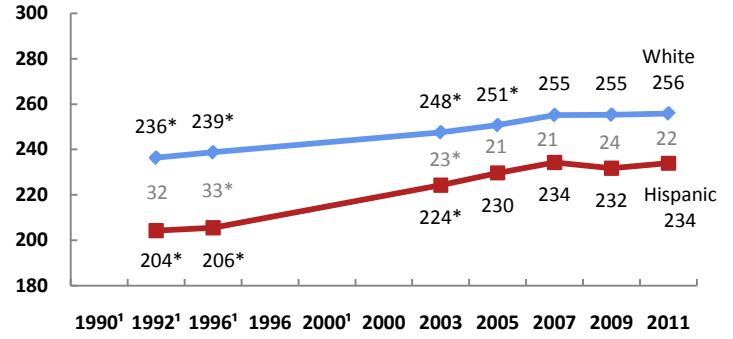
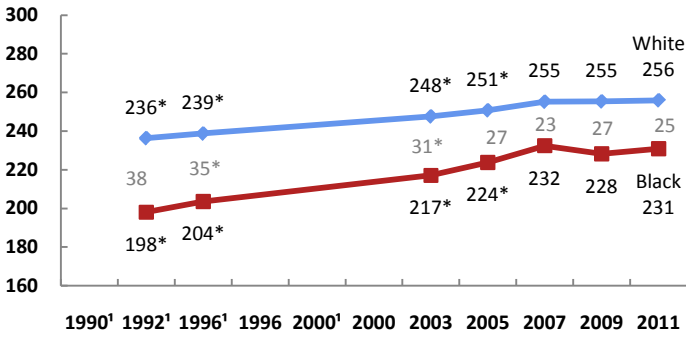
‡ Reporting standards not met.

Rounds to zero.

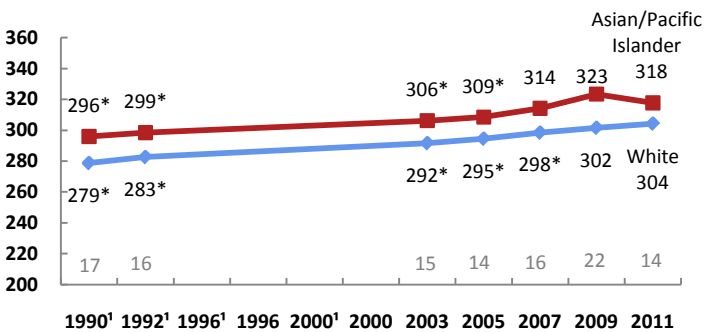
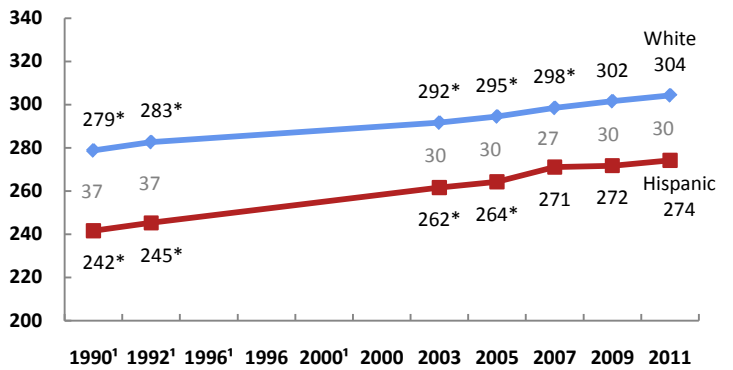
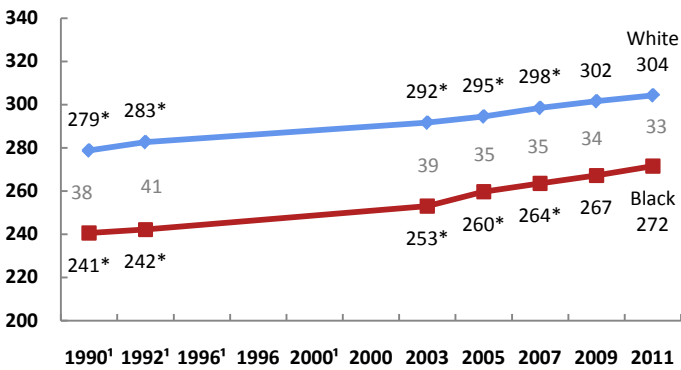
*Significantly different (p < .05) from 2011.

Racial/ethnic group scores and gaps

Grade 4



Grade 8



Grade 4 and 8: No data were available for American Indian/Alaska Native students in this jurisdiction.

¹ Accommodations not permitted.
 ‡ Reporting standards not met.
 # Rounds to zero.
 *Significantly different (p < .05) from 2011.