

NEW JERSEY DEPARTMENT OF EDUCATION

OFFICE OF CHARTER SCHOOLS

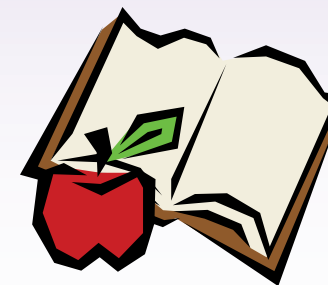
Charter School Happenings



SEPTEMBER 2009 TO SEPTEMBER 2010
SCHOOL CALENDAR

Academy Charter High School
Academy for Urban Leadership Charter High School (Scheduled to open 2010-2011 school year)
Adelaide L. Sanford Charter School
Barack Obama Green Charter High School (Scheduled to open 2010-2011 school year)
Bergen Arts and Science Charter School
Burch Charter School of Excellence
Camden Academy Charter High School
Camden's Pride Charter School
Camden's Promise Charter School
Capital Prep Charter School
Center for Responsible Economic and Technological Excellence (CREATE) Charter School
Central Jersey Arts Charter School
Central Jersey College Prep Charter School
Charter High School for Environmental and Civic Studies (Scheduled to open 2010-2011 school year)
chARTer~TECH High School for Performing Arts
Classical Academy Charter School of Clifton
Community Charter School of Paterson
D.U.E. Season Charter School
Discovery Charter School
Dr. Ellen G. Pressman Charter School
East Orange Community Charter School
Elysian Charter School of Hoboken
Emily Fisher Charter School of Advanced Studies
Englewood on the Palisades Charter School
Environment Community Opportunity (ECO) Charter School
Ethical Community Charter School
Foundation Academy Charter School
Freedom Academy Charter School
Galloway Community Charter School
Gray Charter School
Greater Brunswick Charter School
Greater Newark Charter School
Hoboken Charter School
Hoboken Dual Language Charter School (Scheduled to open 2010-2011 school year)
Hope Academy Charter School
Institute for Excellence Charter School
International Charter School of Trenton
Jersey City Community Charter School
Jersey City Golden Door Charter School
Lady Liberty Academy Charter School
LEAP Academy University Charter School
Learning Community Charter School
Liberty Academy Charter School

Marion P. Thomas Charter School
New Horizons Community Charter School
Newark Educators Community Charter School
Newark Legacy Charter School (Scheduled to open 2010-2011 school year)
North Star Academy Charter School of Newark
Oceanside Charter School
Pace Charter School of Hamilton
Paterson Charter School for Science and Technology
Paul Roberson Charter School for the Humanities
Pleasantech Academy Charter School
Pride Academy Charter School
Princeton Charter School
Queen City Academy Charter School
Raritan Arts and Science Charter School (Scheduled to open 2010-2011 school year)
Red Bank Charter School
Ridge and Valley Charter School
Riverbank Charter School of Excellence
Robert Treat Academy Charter School
Schomburg Charter School
Soaring Heights Charter School
Sussex County Charter School for Technology
TEAM Academy Charter School
Teaneck Community Charter School
Trenton Community Charter School
Trillium Charter School (Scheduled to open 2010-2011 school year)
Union County Technology, Engineering, Architecture, Math & Science (TEAMS) Charter School
Unity Charter School
University Academy Charter High School
University Heights Charter School
Village Charter School
Vineland Public Charter School
Visions Academy Charter High School (Scheduled to open 2010-2011 school year)



New Jersey Department of Education
Lucille E. Davy, Commissioner

Willa Spicer, Deputy Commissioner

Division of District and School Improvement
Rochelle Hendricks, Assistant Commissioner



Division of Finance
Katie Attwood, Assistant Commissioner

Charter Schools Initiative
Kenneth A. Figgs, Manager
Donna Best
Maria Casale
Colleen Eskow
Kimberly James-Wilkerson
Jermaine Page

Charter School Fiscal Unit
Yut'se Thomas, Director
Kathy Ambrosio
Karina Bielaus
Jacqueline Grama
Charles Kahil
Nicole Kane

Back to School



- NJ School Report Card data collection due September 29, 2009
- Applications for National Board Certification available at county office
- Board minutes to county office
- Update enrollment information to district(s)
- Newly approved charter schools announced September 30, 2009

New Jersey Department
of
Education

Charter Schools

September 2009

Sun	Mon	Tue	Wed	Thu	Fri	Sat
		1	2	3	4	5
6	7 Labor Day State Offices Closed	8	9	10	11 Patriot Day	12
13	14	15	16	17	18	19 Rosh Hashanah
20	21	22 First Day of Autumn	23	24	25	26
27	28 Yom Kippur	29	30			

Hispanic Heritage
Month
Sept. 15 to Oct. 15

- October 15, 2009 enrollment count to Office of School Funding (ASSA)
- Renewal Application due October 15, 2009
- Charter amendment to increase enrollment in subsequent school year due by October 15, 2009
- U.S. Senate Youth Program nomination due October 16, 2009
- Presidential Awards for Excellence in Math and Science Teaching nomination (online nomination available on www.paemst.org)
- School to Watch (STW) applications due October 14, 2009
- Update NEW members for the board of trustees administrators list
- Pupil transportation report
- Third week in October is School Violence Awareness Week
- October 15, 2009, Fall Survey enrollment collection open
- October 20, 2009, Certificated Staff collection open
- September financial reports to county office
- Copies of quarterly reports to county office
- Annual Report on aide positions to county office
- FY 2009, Perkins final report
- Board minutes to county office
- Update enrollment information to district(s)



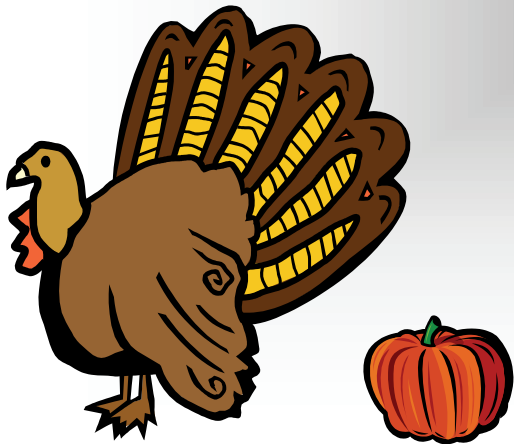
New Jersey Department
of
Education

Charter Schools

October 2009

Sun	Mon	Tue	Wed	Thu	Fri	Sat
				1	2	3
4	5	6	7	8	9	10
11	12 Columbus Day State Offices Closed	13	14	15	16 National Boss Day	17
18	19	20	21	22	23	24
25	26	27	28	29	30	31 Halloween

- . Annual Independent Audit Report to county office and Office of School Funding (due November 5, 2009)
- . Fall Survey report (due November 6, 2009)
- . Certificated Staff report (due November 13, 2009)
- . Renewal visits
- . LEP report
- . November 3, 2009, NJ Report Card narrative open for submissions
- . Title IV Safe/Drug Free performance report
- . Board minutes to county office
- . Update enrollment information to district(s)



New Jersey Department
of
Education

Charter Schools

November 2009

Sun	Mon	Tue	Wed	Thu	Fri	Sat
1 Daylight Saving Time Ends	2	3 Election Day State Offices Closed	4	5	6	7
8	9	10	11 Veterans Day State Offices Closed	12	13	14
15	16	17	18	19	20	21
22	23	24	25	26 Thanksgiving Day	27	28
29	30					

Native American
Heritage Month

- Title I Comparability of Services report
- Revised budget to Office of School Funding
- Special education annual data report
- Professional development plan to county office
- NCLB Final Report/Carry-Over application
- FY IDEA Final Report/Carry-Over application
- IASA/CSR final reports
- Board minutes to county office
- Update enrollment information to district(s)
- Newly approved schools submit bylaws, certificate of incorporation, W-9, EIN, ACH with voided check



New Jersey Department
of
Education

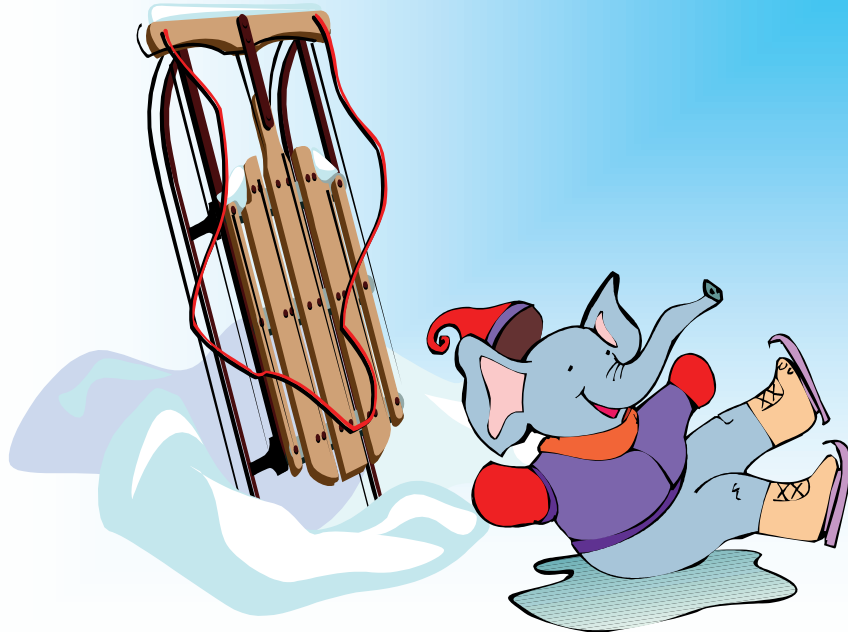
Charter Schools

December 2009

Sun	Mon	Tue	Wed	Thu	Fri	Sat
		1	2	3	4	5
6	7 Pearl Harbor Day	8	9	10	11	12 Hanukkah
13	14	15	16	17	18	19
20	21 Winter Begins	22	23	24	25 Christmas Day	26 Kwanzaa Begins
27	28	29	30	31		



- Enrollment from initial recruitment period
January 15, 2010
- December financial reports to county office
- Quarterly financial reports
- January 9, 2010, last day to submit NJ School Report Card narrative
- Board minutes to county office
- Update enrollment information to district(s)



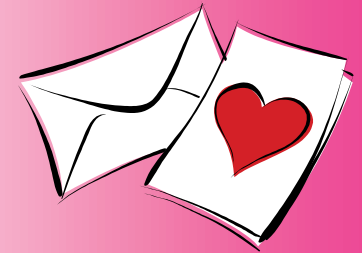
New Jersey Department
of
Education

Charter Schools

January 2010

Sun	Mon	Tue	Wed	Thu	Fri	Sat
					1 New Year's Day State Offices Closed	2
3	4	5	6	7	8	9
10	11	12	13	14	15	16
17	18 Martin Luther King Jr. Day State Offices Closed	19	20	21	22	23
24	25	26	27	28	29	30
31						

- Update NEW hires list
- List of school employees/officials required to file School Ethics form to county office
- Title III, Immigrant Student Count to Office of Bilingual Education
- Title IV, Part A Performance Report (Safe and Drug-Free Schools)
- Title II, Part A Highly Qualified Teachers Survey
- Teacher of the Year Program nomination information available (call county office)
- Talent Pool recognition application available (call county office)
- Program review visits
- NJ School Report Card released
- Bilingual/ESL fall report
- Extra ordinary Cost Aide
- Renewal decisions rendered February 26, 2010
- Board minutes to county office district(s)



New Jersey Department
of
Education

Charter Schools

February 2010

Sun	Mon	Tue	Wed	Thu	Fri	Sat
	1	2	3	4	5	6
7	8	9	10	11	12 Lincoln's Birthday State Offices Closed	13
14 Valentine's Day	15 President's Day State Offices Closed	16	17 Ash Wednesday	18	19	20
21	22 Washington's Birthday	23	24	25	26	27
28						

Black History
Month

- Notify districts of transportation needs
- New charter school applications due March 31, 2010
- Technical assistance sessions—training modules for newly approved and planning-year schools
- SRA Student Profile
- Immigrant count
- Budget summary, narrative, cash flow statement due to Office of School Funding and county offices March 30, 2010
- National Youth Science Camp nominations/National Science Foundation
- Technical assistance sessions for newly approved and planning-year schools
- Talent Pool recognition application available
- Comprehensive Equity Plan
- Robert C. Byrd Scholarship online application available (high school senior)
- Talent Pool nomination due March 31, 2010
- Board minutes to county office
- Update enrollment information to district(s)



New Jersey Department
of
Education

Charter Schools

March 2010

Sun	Mon	Tue	Wed	Thu	Fri	Sat
	1	2	3	4	5	6
7	8	9	10	11	12	13
14 Daylight Savings Time Begins	15	16	17 St. Patrick's Day	18	19	20 Spring Begins
21	22	23	24	25	26	27
28 Palm Sunday	29	30 Passover	31			

- Post-renewal visits Board of Trustees/administrators list for all members
- Board meeting dates
- Governor's Awards in Art Education nomination (ceremony is in May)
- March financial reports to county office
- School ethics disclosure statements to county office
- Schedule of board of trustees meetings for the year to county office
- Enrollment data to district(s) for verification of transportation needs
- Quarterly financial reports
- Requisitions to county office for annual supply of forms
- Board minutes to county office
- Update enrollment information to district(s)



New Jersey Department
of
Education

Charter Schools

April 2010

Sun	Mon	Tue	Wed	Thu	Fri	Sat
				1	2 Good Friday State Offices Closed	3
4 Easter	5	6	7	8	9	10
11	12	13	14	15	16	17
18	19	20	21 Administrative Professionals Day	22	23	24
25	26	27	28	29	30	

- National Charter Schools Week—May 3 to May 7, 2010
- School calendar to districts providing transportation
- Verification of enrollment by district(s) for transportation needs
- Calendar for 2009-10 school year
- Verification of facility description—newly approved schools or, if moving, expanding or renovating, notify county offices to schedule a walk-through
- IDEA-B application
- Summer school applications
- School Ethics
- Board minutes to county office



New Jersey Department
of
Education

Charter Schools

May 2010

Sun	Mon	Tue	Wed	Thu	Fri	Sat
						1
2	3	4	5	6	7	8
9 Mother's Day	10	11	12	13	14	15 Armed Forces Day
16	17	18	19	20	21	22
23	24	25	26	27	28	29
30	31 Memorial Day State Offices Closed					

Asian Pacific
American Heritage
Month

- FY 2010, Title I Comparability of Services report
- Technology plan due to County Coordination Council for Distance Learning & Technology (check with county office)
- End-of-year report for special education
- School Register Summary (SRS) to Office of School Funding due five days after last school day
- Evidence of double-entry bookkeeping with GAAP for new schools to Office of School Funding due June 30, 2010
- EVVRS (Violence & Vandalism) Report
- Facility lease, mortgage or title if newly approved or if moving/renovating or lease expired
- End-of-year enrollment count to Office of School Funding (based on last day of school)
- Schools to Watch (STW) application available
- NCLB Amendment application—online
- IDEA Amendment application—online
- Board minutes to county office
- Update enrollment information to district(s)
- All documentation for new schools due June 30, 2010



New Jersey Department
of
Education

Charter Schools

June 2010

Sun	Mon	Tue	Wed	Thu	Fri	Sat
		1	2	3	4	5
6	7	8	9	10	11	12
13	14 Flag Day	15	16	17	18	19
20 Father's Day	21 Summer Begins	22	23	24	25	26
27	28	29	30			



- Pick up annual supply of forms from the county office
- Verify EVVRS incident data for DOE
- School Register Summary to Office of School Funding five days after last school day
- Commissioner's decision on final charter granting July 15, 2010
- Approved technology plan due by July 1, 2010
- Board minutes to county office



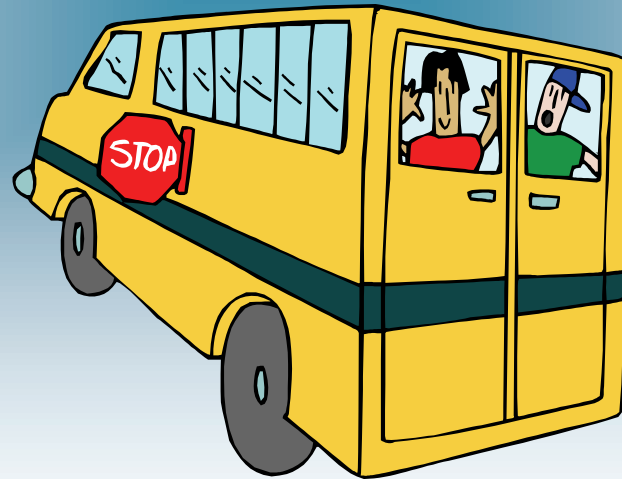
New Jersey Department
of
Education

Charter Schools

July 2010

Sun	Mon	Tue	Wed	Thu	Fri	Sat
				1	2	3
4 Independence Day	5 Independence Day Observed State Offices Closed	6	7	8	9	10
11	12	13	14	15	16	17
18	19	20	21	22	23	24
25	26	27	28	29	30	31

- Charter School Annual Report
- Education management company/consulting firm contracts
- Directory of **ALL staff** with social security numbers and criminal history review forms/approval letters
- NCLB Consolidated Application
- Board minutes to county office
- Update enrollment information to district(s)



New Jersey Department
of
Education

Charter Schools

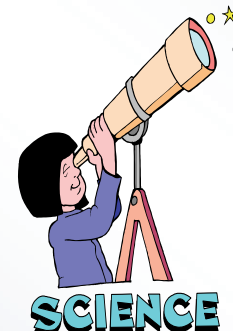
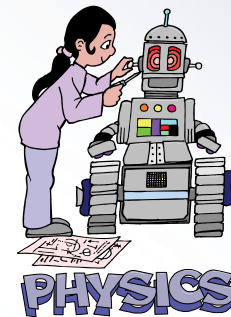
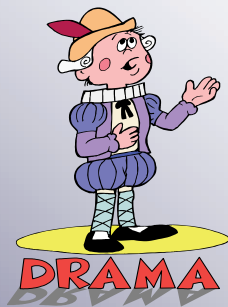
August 2010

Sun	Mon	Tue	Wed	Thu	Fri	Sat
1	2	3	4	5	6	7
8	9	10	11 First of Ramadan	12	13	14
15	16	17	18	19	20	21
22	23	24	25	26	27	28
29	30	31				

Get ready for back to school

Back to School

- Applications for National Board Certification available at county office
- Board minutes to county office
- Update enrollment information to district(s)



New Jersey Department
of
Education

Charter Schools

September 2010

Sun	Mon	Tue	Wed	Thu	Fri	Sat
			1	2	3	4
5	6 Labor Day State Offices Closed	7	8	9 Rosh Hashanah	10	11 Patriot Day
12	13	14	15	16	17	18 Yom Kippur
19	20	21	22	23 First Day of Autumn	24	25
26	27	28	29	30		

Approved Charter Schools

Atlantic County

chARTer~TECH High School for Performing Arts
Galloway Community Charter School
Oceanside Charter School
Pleasantech Academy Charter School

(609) 926-7458
(609) 652-7118 x100
(609) 348-3485
(609) 383-1717

Robert Treat Academy Charter School
TEAM Academy Charter School
University Heights Charter School
Visions Academy Charter High School

(973) 482-8811
(973) 705-8326
(973) 623-1965
(201) 572-1985

Bergen County

Bergen Arts and Science Charter School
Charter High School for Environmental and Civic Studies
Englewood on the Palisades Charter School
Teaneck Community Charter School

(973) 253-0002
(201) 862-1983
(201) 569-9765
(201) 833-9600

Burlington County

Riverbank Charter School of Excellence

(609) 499-1615

Camden County

Camden Academy Charter High School
Camden's Pride Charter School
Camden's Promise Charter School
D.U.E. Season Charter School
Environment Community Opportunity (ECO) Charter School
Freedom Academy Charter School
Institute for Excellence Charter School
LEAP Academy University Charter School

(856) 365-1000 x101
(856) 365-1000 x318
(856) 365-1000 x101
(856) 225-0511
(856) 963-2627
(856) 962-0766
(609) 561-9414
(856) 614-0400

Cumberland County

Vineland Public Charter School

(856) 691-1004

Essex County

Adelaide L. Sanford Charter School
Burch Charter School of Excellence
Discovery Charter School
East Orange Community Charter School
Gray Charter School
Greater Newark Charter School
Lady Liberty Academy Charter School
Maria L. Varisco-Rogers Charter School
Marion P. Thomas Charter School
New Horizons Community Charter School
Newark Educators Community Charter School
Newark Legacy Charter School
North Star Academy Charter School of Newark
Pride Academy Charter School

(973) 297-1275
(973) 373-3223
(973) 623-0222
(973) 996-0400 x120
(973) 824-6661
(973) 242-3543
(973) 623-9005
(973) 484-9001
(973) 621-0060
(973) 848-0400
(973) 273-0020
(973) 932-6532
(973) 642-0101
(973) 991-2410



Approved Charter Schools

Hudson County

Center for Responsible Economic and Technological Excellence (CREATE) Charter School	(201) 413-1500
Elysian Charter School of Hoboken	(201) 876-0102
Ethical Community Charter School	(201) 984-4156
Hoboken Charter School	(201) 963-0222
Hoboken Dual Language Charter School	(201) 792-0966
Jersey City Community Charter School	(201) 433-2288
Jersey City Golden Door Charter School	(201) 795-4400 x3425
Learning Community Charter School	(201) 332-0900
Liberty Academy Charter School	(201) 217-6771
Schomburg Charter School	(201) 451-7770 x121
Soaring Heights Charter School	(201) 434-4800
University Academy Charter High School	(201) 200-3200

Hunterdon County

Trillium Charter School	(609) 773-0035
-------------------------	----------------

Mercer County

Capital Preparatory Charter High School	(609) 393-3220
Emily Fisher Charter School of Advanced Studies	(609) 656-1946
Foundation Academy Charter School	(609) 920-9200
International Charter School of Trenton	(609) 394-3111
Pace Charter School of Hamilton	(609) 587-2288
Paul Roberson Charter School for the Humanities	(609) 394-7727
Princeton Charter School	(609) 924-0575
Trenton Community Charter School	(609) 393-3220
Village Charter School	(609) 695-0110



Middlesex County

Academy for Urban Leadership Charter High School	(732) 932-4727
Central Jersey College Prep Charter School	(732) 302-9991
Greater Brunswick Charter School	(732) 448-1052

Monmouth County

Academy Charter High School	(732) 681-8377
Hope Academy Charter School	(732) 988-4227
Red Bank Charter School	(732) 450-9799

Morris County

Unity Charter School	(973) 292-1808
----------------------	----------------

Passaic County

Classical Academy Charter School of Clifton	(973) 278-7707
Community Charter School of Paterson	(973) 413-1600
Paterson Charter School for Science and Technology	(973) 247-0600

Somerset County

Central Jersey College Prep Charter School	(732) 302-9991
--	----------------

Sussex County

Sussex County Charter School for Technology	(973) 383-6700 x286
---	---------------------

Union County

Barack Obama Green Charter High School	(908) 834-5378
Central Jersey Arts Charter School	(908) 753-0030
Dr. Ellen G. Pressman Charter School	(908) 756-3500 x175
Queen City Academy Charter School	(908) 753-4700
Union County TEAMS (Technology, Engineering, Architecture, Math & Science) Charter School	(908) 754-9043

Warren County

Ridge and Valley Charter School	(908) 362-1114
---------------------------------	----------------

COUNTY OFFICES OF EDUCATION

County	County Superintendent	Office Mailing Address
Atlantic	Mr. Thomas Dowd, Exec. Co. Supt. 609-625-0004 609-625-6539 (fax)	Atlantic County Office of Education 6260 Old Harding Highway Mays Landing, NJ 08330-1559
Bergen	Dr. Aaron R. Graham, Exec. Co. Supt. 201-336-5060 201-336-6880 (fax)	Bergen County Office of Education One Bergen County Plaza 3rd Floor, Room 350 Hackensack, NJ 07601
Burlington	Dr. Lester W. Richens, Exec. Co. Supt. 609-265-5060 609-265-5932 (fax)	Burlington County Office of Education PO Box 6000 Mount Holly, NJ 08060
Camden	Ms. Peggy Nicolosi, Exec. Co. Supt. 856-401-2400 856-401-2410 (fax)	Camden County Office of Education Jefferson Hall, 3rd floor PO Box 2000, College Drive Blackwood, NJ 08012
Cape May	Mr. Terrence J. Crowley, Exec. Co. Supt. 609-465-1283 609-465-2094 (fax)	Cape May County Office of Education 4 Moore Road, DN 701 Cape May Court House, NJ 08210
Cumberland	Dr. Richard Stepura, Exec. Co. Supt. 856-451-0211 856-455-9523 (fax)	Cumberland County Office of Education 19 Landis Avenue Bridgeton, NJ 08302
Essex	Dr. Lawrence S. Feinsod, Exec. Co. Supt. 973-395-4677 973-395-4696 (fax)	Essex County Office of Education 7 Glenwood Avenue, Suite 404 East Orange, NJ 07018
Gloucester	Dr. H. Mark Stanwood, Exec. Co. Supt. 856-468-6500 856-468-9115 (fax)	Gloucester County Office of Education 1492 Tanyard Road Sewell, NJ 08080-4222

COUNTY OFFICES OF EDUCATION

County	County Superintendent	Office Mailing Address
Hudson	Dr. Tim Brennan, Acting Exec. Co. Supt. 201-319-3850 201-319-3650 (fax)	Hudson County Office of Education 595 Newark Avenue Jersey City, NJ 07306
Hunterdon	Dr. Gerald J. Vernotica, Exec. Co. Supt. 908-788-1414 908-788-1457 (fax)	Hunterdon County Office of Education PO Box 2900 Flemington, NJ 08822-2900
Mercer	Dr. Samuel Stewart, Exec. Co. Supt. 609-588-5884 609-588-5849 (fax)	Mercer County Office of Education 1075 Old Trenton Road Trenton, NJ 08690
Middlesex	Dr. Patrick Piegari, Exec. Co. Supt. 732-249-2900 732-296-0683 (fax)	Middlesex County Office of Education 1460 Livingston Avenue Building 400, 2nd Floor North Brunswick, NJ 08902
Monmouth	Mrs. Carole K. Morris, Exec. Co. Supt. 732-431-7810 732-776-7237 (fax)	Monmouth County Office of Education PO Box 1264 Freehold, NJ 07728-1264
Morris	Dr. Kathleen C. Serafino, Acting Exec. Co. Supt. 973-285-8332 973-285-8341 (fax)	Morris County Office of Education PO Box 900 Morristown, NJ 07963-0900
Ocean	Dr. Bruce Greenfield, Exec. Co. Supt. 732-929-2078 732-506-5336 (fax)	Ocean County Office of Education 212 Washington Street. Toms River, NJ 08753
Passaic	Mr. Robert Gilmartin, Acting Exec. Co. Supt. 973-569-2110 973-754-0241 (fax)	Passaic County Office of Education 501 River Street Paterson, NJ 07524

COUNTY OFFICES OF EDUCATION

County	County Superintendent	Office Mailing Address
Salem	Mr. Robert Bumpus, Exec. Co. Supt. 856-339-8611 856-935-6290 (fax)	Salem County Office of Education 164 Route 45 Salem, NJ 08079
Somerset	Mrs. Trudy Doyle, Exec. Co. Supt. 908-541-5700 908-722-6902 (fax)	Somerset County Office of Education PO Box 3000 Somerville, NJ 08876
Sussex	Dr. Rosalie S. Lamonte, Exec. Co. Supt. 973-579-6996 973-579-6476 (fax)	Sussex County Office of Education 262 White Lake Road Sparta, NJ 07871
Union	Dr. Carmen Centuolo, Exec. Co. Supt. 908-654-9860 908-654-9869 (fax)	Union County Office of Education 300 No. Avenue, East Westfield, NJ 07090
Warren	Dr. Kevin Brennan, Exec. Co. Supt. 908-689-0464 908-689-1457 (fax)	Warren County Office of Education 1501 Route 57 Washington, NJ 07882

New Jersey Department of Education

Office of Charter Schools

PO Box 500

Trenton, NJ 08625-0500

Phone: 609-292-5850

Fax: 609-633-9825