

# NEW JERSEY HIV/AIDS REPORT

December 31, 2007



Jon S. Corzine  
Governor

Public Health Services Branch  
Division of HIV/AIDS Services  
...preventing disease with care



Heather Howard  
Commissioner

## Division of HIV/AIDS Services

...preventing disease with care

**Office of the Assistant Commissioner** (609) 984-5874

Medical Director (609) 984-6191  
 Policy and Planning  
 Special Projects and Initiatives

**Administrative Support Services Unit** (609) 984-5888

**Care and Treatment Services Unit** (609) 984-6328

AIDS Drug Distribution Program  
 Corrections Initiative  
 Health Insurance Continuation Program  
 HIV Care Consortia  
 HIV Counseling and Testing Program (609) 984-6125  
 HIV Early Intervention Program  
 HIV Home Health Care Program  
 Housing Opportunities for Persons with AIDS

**Epidemiologic Services Unit** (609) 984-5940

Case Reporting Forms  
 HIV/AIDS Statistics  
 Epidemiologic Studies  
 Notification Assistance Program-Newark (973) 648-7500

**Prevention and Education Services Unit** (609) 984-6050

Community-based HIV Prevention Projects  
 HIV Prevention Community Planning Group  
 HIV-related Training  
 NJ AIDS/STD Hotline 1-800-624-2377  
 Printed Material Distribution

Visit the New Jersey Department of Health and Senior Services' website:  
[www.state.nj.us/health](http://www.state.nj.us/health).

To request to have this report link e-mailed to you, to be added to our mailing list, or to request other information, contact us by telephone or by e-mail.

Telephone (609) 984-5940 e-mail [aids@doh.state.nj.us](mailto:aids@doh.state.nj.us)

**Questions?** Contact New Jersey HIV/AIDS Hotline 1-800-624-2377

## Highlights

- Cumulative HIV/AIDS cases in New Jersey exceeded 70,000 cases by the end of December 2007. Over 50,000 are AIDS cases and over 20,000 are HIV (not AIDS) cases (page 6-7).
- By the end of 2007, 34,470 people are reported living with HIV or AIDS in New Jersey.
- Minorities account for 76% of adult/adolescent cumulative HIV/AIDS cases and 78% of all persons living with HIV/AIDS (Page 8).
- Injection drug use and sexual contact remain the major modes of exposure to HIV infection. The proportion of reported cases with HIV/AIDS who were exposed through injection drug use (IDU) is lower than in the past, while the proportion of cases that were exposed through sexual contact is increasing (Page 10).
- Three of four of persons living with HIV/AIDS are 40 years of age or older (Page 12).
- Thirty-six percent of those living with HIV/AIDS are females; 68% of females are currently 20-49 years old (Page 12).
- The number of annual pediatric infections has dropped over 95% (page 14).

## Featured Articles

This report features an update on the IMPACT initiative.

## Special Features

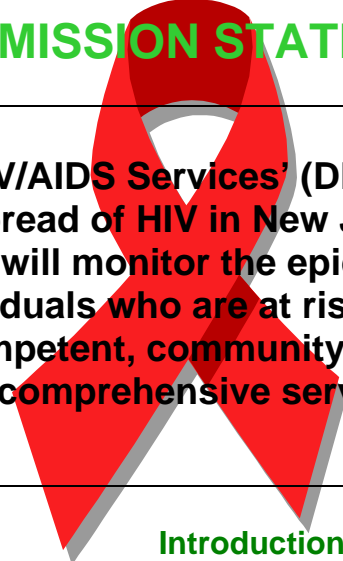
**The map** on page 6-7 features a complete reporting of HIV/AIDS cases, pediatric HIV/AIDS infections, and perinatal exposure by county.

Copies of this report are available on the NJDHSS' website at [www.state.nj.us/health](http://www.state.nj.us/health). The website also contains complete county and municipal reports.



Look for these shoes to help you walk through the data!

## MISSION STATEMENT



**The Division of HIV/AIDS Services' (DHAS) mission is to prevent, treat, and reduce the spread of HIV in New Jersey. In keeping with this mission, the DHAS will monitor the epidemic and assure through its resources that individuals who are at risk or infected with HIV have access to culturally competent, community-based networks that provide qualitative and comprehensive services.**

### Introduction

The purpose of this report is to provide data that can be used for monitoring the epidemic and for planning services and prevention activities. All data in this report are based on cases that were reported to the Division of HIV/AIDS Services (DHAS) through December 31, 2007. A description of how these data are collected can be found in the June 2002 HIV and AIDS Surveillance Report. This is available on the NJDHSS' website at [www.state.nj.us/health](http://www.state.nj.us/health). If you would prefer to receive this report by e-mail contact us at [aids@doh.state.nj.us](mailto:aids@doh.state.nj.us) and we will e-mail you a link to the report.

### What can I find in this report?

#### Epidemiology

**Adult/Adolescent HIV/AIDS cases in each age group, in each racial/ethnic group, and for each HIV/AIDS exposure category by gender for the most recent year, as well as cumulatively.**

These tables show all adult/adolescent persons reported with HIV infection including those who have progressed to AIDS whether living or deceased. As new therapies become available, a larger percentage of cases will remain HIV positive for longer periods of time before developing AIDS. Looking at both HIV and AIDS status provides a more complete picture of the history of infection in the state than does data about AIDS alone. It is also important to note that cases reported in the past 12 months may have been diagnosed in previous years, but due to data transmission were only recently tabulated.

**Persons *living* with HIV or AIDS for each gender by age group, in each racial/ethnic group, and for each exposure category.**

These data show where the epidemic is now and where services are most needed.

## Pediatric HIV/AIDS and Exposures

These data show the number of individuals diagnosed while under the age of 13. The data include information on perinatal exposures and other pediatric infections.

## HIV Prevention Initiatives

Updated data for the 10 cities in which the IMPACT initiative is conducted are presented.

## Modified Risk Exposure Hierarchy

Although we usually cannot determine exactly how or when a person was infected, it is possible to determine which behaviors exposed an individual to HIV infection. In the 1980s the Centers for Disease Control and Prevention (CDC) established a hierarchy to categorize modes of exposure for persons reported with AIDS based on their risk exposures. Behaviors most likely to lead to infection are higher in the hierarchy than those less likely to lead to infection. This hierarchy is described at [www.cdc.gov/hiv/stats/hasr1402/technotes.htm](http://www.cdc.gov/hiv/stats/hasr1402/technotes.htm).

Beginning in the June 2004 report, we began to use a modified risk hierarchy. Heterosexual contact with a person of unknown status was reported as “heterosexual contact with partners of unknown HIV risk.” Prior to that, these cases were reported as persons with unknown risk exposure. Heterosexual contact with persons of known risk are reported by the risk status of the partner. Due to improvements in the screening of donated blood, transfusions have been virtually eliminated as an exposure category for HIV infection. In this report, transfusion and hemophilia cases are reported in the “Other/Unknown” category.

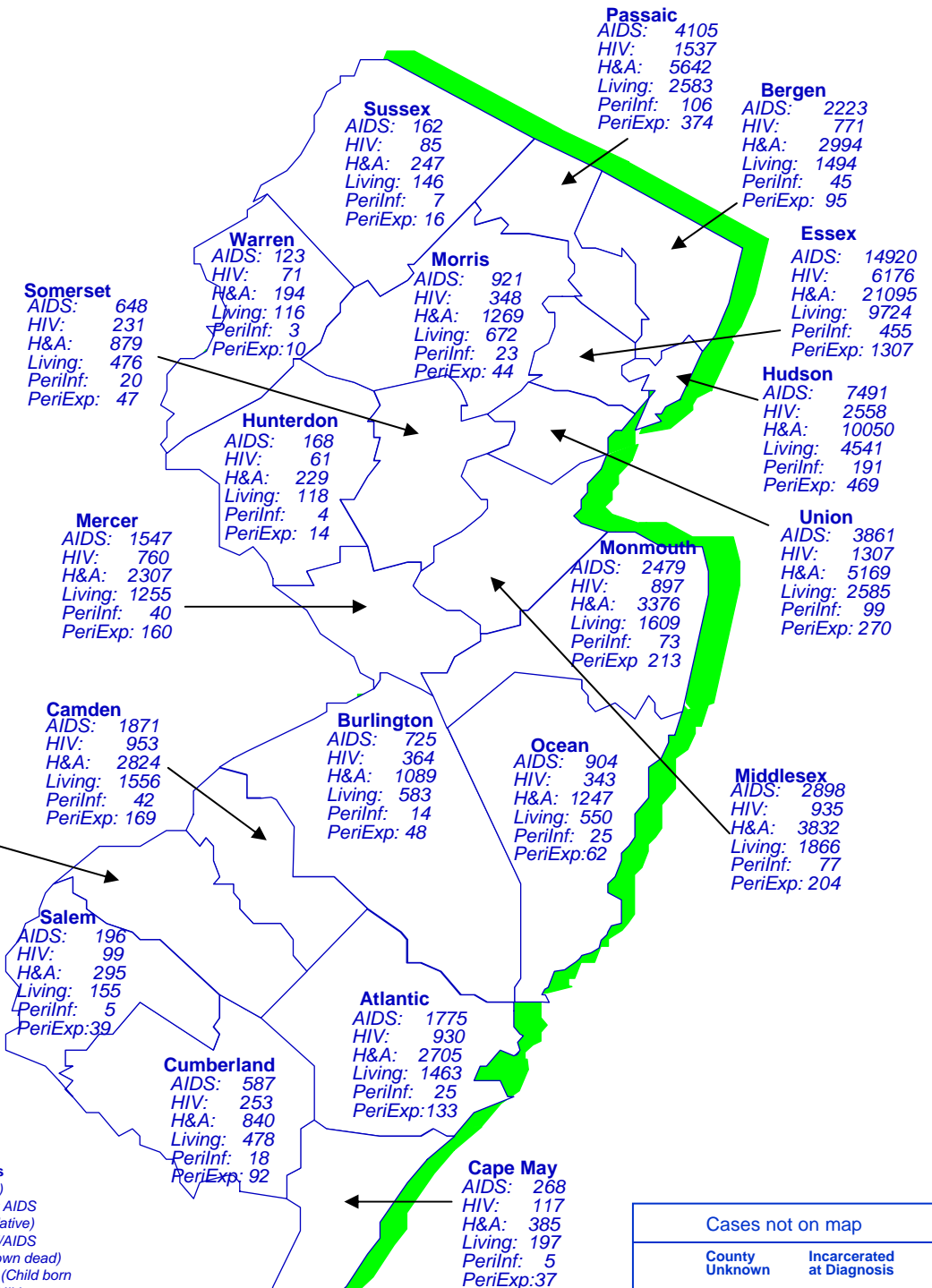
The ascertainment of exposure category is incomplete, especially for cases reported recently. Some cases currently in the “Other/Unknown” category may be categorized later to known exposure categories as follow-up investigations are completed.

## What won't this report tell me?

Due to delays between diagnosis of HIV or AIDS and reporting to the DHAS, cases reported during the last 12 months may have been diagnosed in previous years. Also, many cases diagnosed in 2006 and 2007 may not be in this report. It is also important to note that individuals who are infected but not tested and diagnosed are not included in these reports. It is estimated that undiagnosed and unreported cases comprise approximately one-third of all estimated infections. The number of persons living with HIV/AIDS is only an estimate because of incomplete mortality data due to delays in reporting deaths of HIV/AIDS cases, and migration in or out-of-state. Therefore, the reported data underestimate true incidence, prevalence and mortality rates.

# CASES OF HIV/AIDS AND PERINATAL HIV EXPOSURE REPORTED AS OF DECEMBER 31, 2007

Statewide Summary Case Counts	
AIDS:	50,810
HIV:	20,080
H&A:	70,890
Living:	34,470
PerInf:	1,335
PeriExp:	3,846



**Legend for Summary Case Counts**  
 AIDS = AIDS cases (cumulative)  
 HIV = HIV Positive Cases, not AIDS  
 H&A = HIV/AIDS Cases (cumulative)  
 Living = Persons Living with HIV/AIDS (HIV/AIDS cases not known dead)  
 PerInf = Perinatal HIV Infections (Child born to HIV+ mother, child's HIV serostatus is confirmed HIV Positive; included in HIV/AIDS case counts)  
 PeriExp = Perinatal HIV Exposures (Child born to HIV+ mother, child's HIV serostatus is negative or indeterminate; NOT included in HIV/AIDS case counts)

Cases not on map		
County Unknown	Incarcerated at Diagnosis	
AIDS:	25	2,529
HIV:	42	1,044
H&A:	67	3,573
Living:	63	1,907
PerInf:	52	0
PeriExp:	19	0

RACE/ETHNICITY DATA

**Table 1. New Jersey Adult/Adolescent HIV/AIDS Cases Reported January 2007 - December 2007 (1) and Cumulative Totals as of December 31, 2007 Racial/Ethnic Group by Gender**

Adults/ Adolescents (2)	MALE				FEMALE				TOTAL				Percentage of Cumulative Cases Who Are Female
	Jan. 2007- Dec. 2007		Cumulative Total		Jan. 2007- Dec. 2007		Cumulative Total		Jan. 2007- Dec. 2007		Cumulative Total		
	No.	(%)	No.	(%)	No.	(%)	No.	(%)	No.	(%)	No.	(%)	
White	348	27%	13,149	27%	100	16%	3,730	17%	448	24%	16,879	24%	22%
Black	601	47%	24,688	52%	413	66%	14,067	65%	1,014	53%	38,755	56%	36%
Hispanic	307	24%	9,623	20%	110	18%	3,646	17%	417	22%	13,269	19%	27%
Asian/Pac. Isl.	15	1%	259	1%	5	1%	93	0%	20	1%	352	1%	26%
Other/Unknown	5	0%	203	0%	0	0%	100	0%	5	0%	303	0%	33%
<b>Total</b>	<b>1,276</b>	<b>100%</b>	<b>47,922</b>	<b>100%</b>	<b>628</b>	<b>100%</b>	<b>21,636</b>	<b>100%</b>	<b>1,904</b>	<b>100%</b>	<b>69,558</b>	<b>100%</b>	<b>31%</b>

(1) Includes every new report of HIV infection received during the 12 month period, regardless of stage of disease (HIV or AIDS) at time of first report.

(2) Includes all patients 13 years of age or older at time of first diagnosis. Patients with missing specific age at diagnosis were not included.

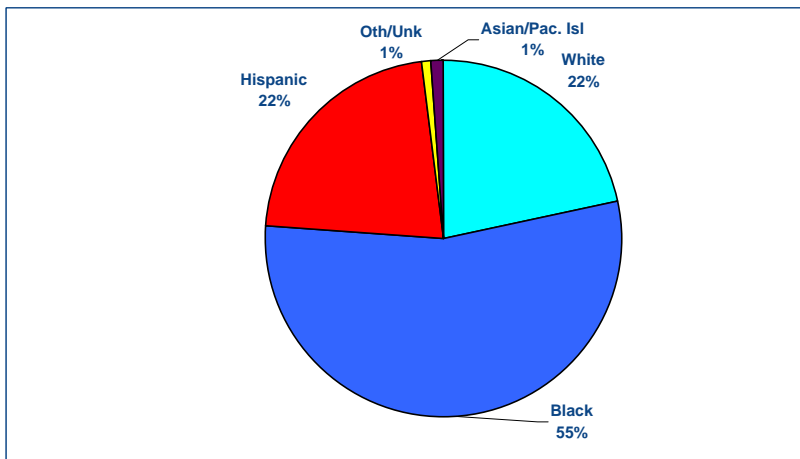
Note: Percentages may not add to 100 due to rounding.

**Table 2. New Jersey Residents Living with HIV/AIDS as of December 31, 2007 Racial/Ethnic Group by Gender**

Race/Ethnicity	MALE		FEMALE		TOTAL		Percentage of Prevalent Cases Who Are Female
	No.	(%)	No.	(%)	No.	(%)	
White	5,550	25%	1,998	16%	7,548	22%	26%
Black	11,129	50%	7,813	64%	18,942	55%	41%
Hispanic	5,138	23%	2,287	19%	7,425	22%	31%
Asian/Pac. Isl.	200	1%	78	1%	278	1%	28%
Other/Unknown	182	1%	95	1%	277	1%	34%
<b>Total</b>	<b>22,199</b>	<b>100%</b>	<b>12,271</b>	<b>100%</b>	<b>34,470</b>	<b>100%</b>	<b>36%</b>

Note: Percentages may not add to 100 due to rounding.

**Figure 1. Percent Living with HIV/AIDS by Ethnicity**



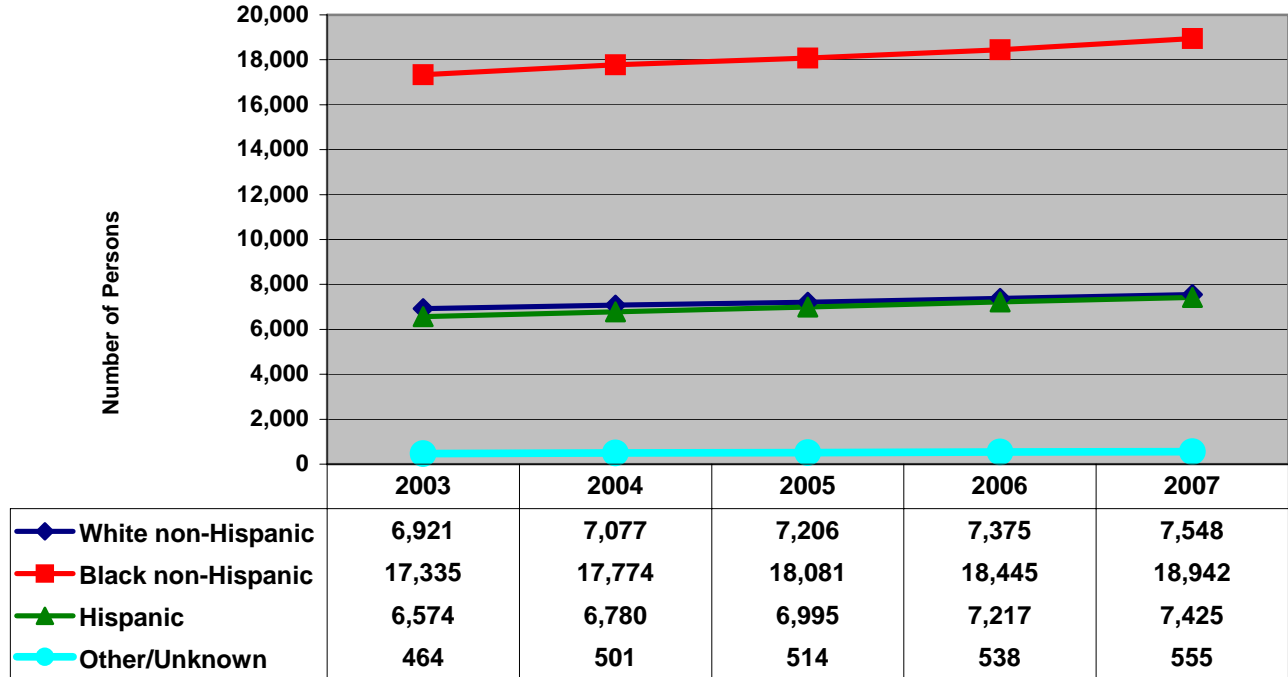
Minorities account for 76% of the cumulative adult/adolescent HIV/AIDS cases, and the disparity is growing.

Thirty-one percent of the cumulative HIV/AIDS cases are women.

Over half of persons living with HIV/AIDS are non-Hispanic Blacks.

Thirty-six percent of those living with HIV/AIDS are females. Over four out of five females living with HIV/AIDS are minorities.

**Figure 2. Estimated Persons Living with HIV/AIDS in New Jersey by Race/Ethnicity 2003-2007**



Source: New Jersey HIV/AIDS Reporting System as of 12/31/2007

**Estimated Rates of Persons Living with HIV/AIDS in New Jersey as of December 31, 2007**

One in 63 Black non-Hispanics were living with HIV/AIDS.

One in 183 Hispanics were living with HIV/AIDS.

One in 728 White non-Hispanics were living with HIV/AIDS.

Source: New Jersey HIV/AIDS Reporting System as of December 31, 2007 and bridged-Race population estimates 2006 (released 8/16/2007).



A pattern of disparity of HIV/AIDS among racial/ethnic groups has been relatively consistent for the past 5 years. The estimated rates of persons living with HIV/AIDS by race/ethnicity in New Jersey as of December 31, 2007, further illustrate this disparity.

## HIV EXPOSURE CATEGORY DATA

**Table 3. New Jersey Adult/Adolescent (1) HIV/AIDS Cases Reported January 2007-December 2007 (2) and Cumulative Totals as of December 31, 2007 Modified Exposure Category by Gender**

Modified Exposure Category (3)	MALE				FEMALE				TOTAL				% of Cum. Cases Female
	Jan. 2007- Dec. 2007		Cumulative Total		Jan. 2007- Dec. 2007		Cumulative Total		Jan. 2007- Dec. 2007		Cumulative Total		
	No.	(%)	No.	(%)	No.	(%)	No.	(%)	No.	(%)	No.	(%)	
MSM (4)	406	32%	13,692	29%	0	0%	0	0%	406	21%	13,692	20%	0%
IDU (4)	126	10%	18,764	39%	62	10%	8,377	39%	188	10%	27,141	39%	31%
MSM/IDU	18	1%	2,227	5%	0	0%	0	0%	18	1%	2,227	3%	0%
Heterosexual contact with partner(s):													
- injection drug user	6	0%	862	2%	24	4%	2,768	13%	30	2%	3,630	5%	76%
- bisexual male	0	0%	0	0%	2	0%	180	1%	2	0%	180	0%	100%
- HIV infection, risk Other/Unknown	75	6%	3,129	7%	124	20%	4,565	21%	199	10%	7,694	11%	59%
- partner(s) of unknown HIV risk (5)	314	25%	5,269	11%	282	45%	4,119	19%	596	31%	9,388	13%	44%
Other/Unknown (6)	331	26%	3,979	8%	134	21%	1,627	8%	465	24%	5,606	8%	29%
<b>Total number of individuals</b>	<b>1,276</b>	<b>100%</b>	<b>47,922</b>	<b>100%</b>	<b>628</b>	<b>100%</b>	<b>21,636</b>	<b>100%</b>	<b>1,904</b>	<b>100%</b>	<b>69,558</b>	<b>100%</b>	<b>31%</b>

- (1) Includes all patients 13 years of age or older at time of diagnosis. Patients with missing specific age at diagnosis were not included.  
 (2) Includes every new report of HIV infection received during the 12 month period, regardless of stage of disease (HIV or AIDS) at time of first report.  
 (3) Cases with more than one risk factor, other than the MSM/IDU combination listed in the table, are tabulated only in the group listed first. The heterosexual contact exposure category has been modified to include contact with partners of unknown HIV risk (see note 5).  
 (4) MSM = male-to-male sex. IDU = injection drug use.  
 (5) Includes patients with no other risk identified who had heterosexual contact with partner(s) whose HIV infection risk is undocumented/unknown.  
 (6) Includes patients who received transfusion, transplant or hemophilia treatment, whether or not blood products were documented to be HIV infected; patients with pediatric HIV exposures; and patients with no reported HIV exposure.

Note: Percentages may not add to 100 due to rounding.

**Table 4. New Jersey Residents Living with HIV or AIDS as of December 31, 2007 Modified Exposure Category by Gender**

Modified Exposure Category (1)	MALE		FEMALE		TOTAL		% of Cases Female
	No.	(%)	No.	(%)	No.	(%)	
MSM (2)	6,836	31%	0	0%	6,836	20%	0%
IDU (2)	5,877	26%	3,296	27%	9,173	27%	36%
MSM/IDU	834	4%	0	0%	834	2%	0%
Heterosexual contact with partner(s):							
- injection drug user	399	2%	1,345	11%	1,744	5%	77%
- bisexual male	0	0%	110	1%	110	0%	100%
- HIV infection, risk Other/Unknown	1,983	9%	3,089	25%	5,072	15%	61%
- partner(s) of unknown HIV risk (3)	3,561	16%	3,033	25%	6,594	19%	46%
Other/Unknown (4)	2,709	12%	1,398	11%	4,107	12%	34%
<b>Total number of individuals</b>	<b>22,199</b>	<b>100%</b>	<b>12,271</b>	<b>100%</b>	<b>34,470</b>	<b>100%</b>	<b>36%</b>

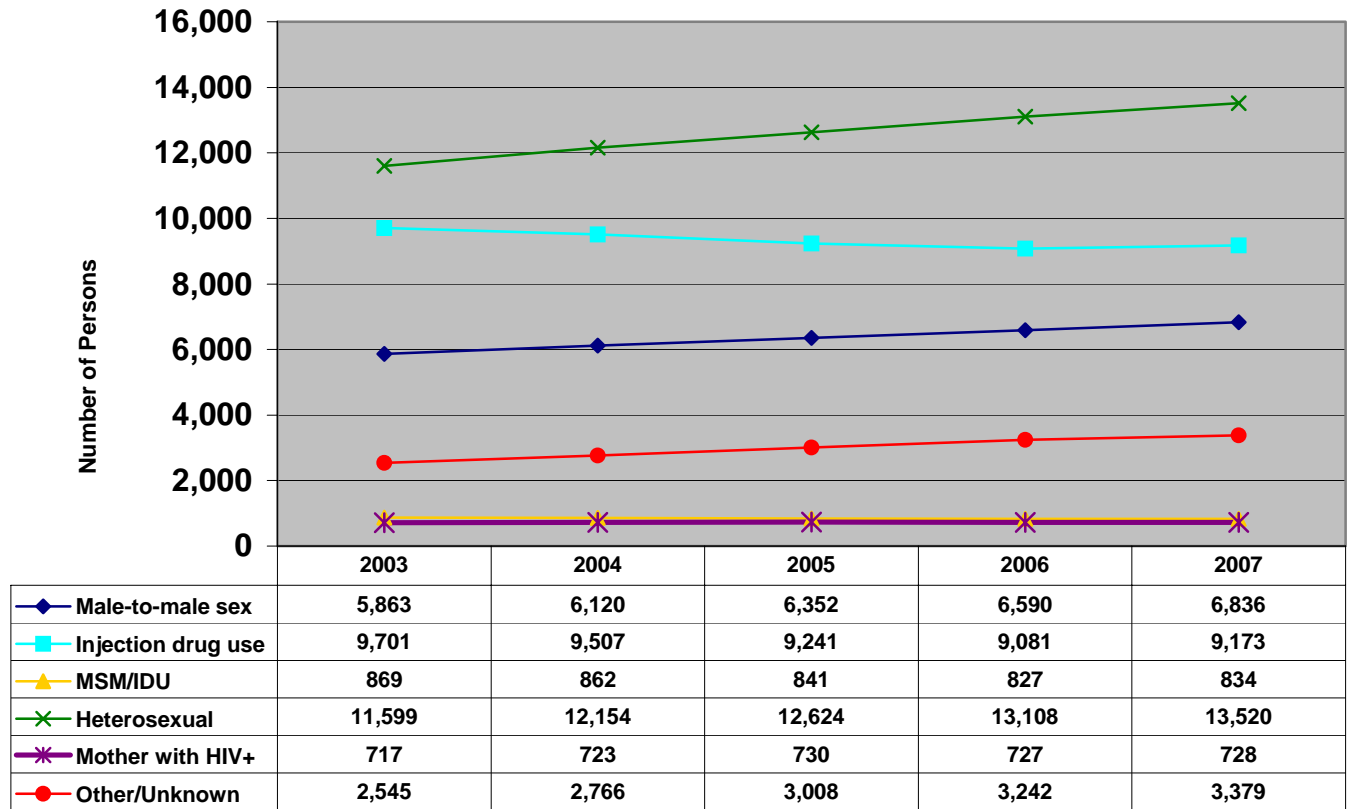
- (1) Cases with more than one risk factor, other than the MSM/IDU combination listed in the table, are tabulated only in the group listed first. The heterosexual contact exposure category has been modified to include contact with partners of unknown HIV risk (see note 3).  
 (2) MSM = male-to-male sex. IDU = injection drug use.  
 (3) Includes patients with no other risk identified who had heterosexual contact with partner(s) whose HIV infection risk is undocumented/unknown.  
 (4) Includes patients who received transfusion, transplant or hemophilia treatment, whether or not blood products were documented to be HIV infected; patients with pediatric HIV exposures; and patients with no reported HIV exposure.

Note: Percentages may not add to 100 due to rounding.



Thirty-nine percent of all cumulative adult/adolescent HIV/AIDS cases were exposed by IDU, 29% by heterosexual contact, and 20% by male-to-male sex. Only 8% of cumulative cases (and 24% of cases recently reported in the last 12 months) were exposed through another risk factor, or had no risk exposure reported.

**Figure 3. Estimated Persons Living with HIV/AIDS in New Jersey by Modified Exposure Category 2003-2007**



Source: New Jersey HIV/AIDS Reporting System as of December 31, 2007.



The number of people living with HIV/AIDS who were exposed through injection drug use (IDU) has shown a downward trend between 2003 and 2006 as the number of people living with HIV/AIDS who were exposed through male-to-male sex (MSM) or heterosexual contact (*modified category – see p. 5*) has continued to increase. The rate of increase for heterosexual contact is steeper. The number of individuals living with HIV/AIDS who were infected perinatally (born to an HIV+ mother) has also remained relatively stable over this period. The number of cases with an unknown mode of exposure is higher in recent years, because data about mode of exposure is often established by investigations years after the original case is reported.

**Table 6. New Jersey Adult/Adolescent HIV/AIDS Cases Reported January 2007 - December 2007 (1) and Cumulative Totals as of December 31, 2007  
Age at Diagnosis by Gender**

Known Age at Diagnosis	MALE				FEMALE				TOTAL				Percentage of Cumulative Cases Who Are Female
	Jan. 2007- Dec. 2007		Cumulative Total		Jan. 2007- Dec. 2007		Cumulative Total		Jan. 2007- Dec. 2007		Cumulative Total		
	No.	(%)	No.	(%)	No.	(%)	No.	(%)	No.	(%)	No.	(%)	
13-19	36	3%	433	1%	20	3%	484	2%	56	3%	917	1%	53%
20-29	236	18%	8,104	17%	119	19%	5,229	24%	355	19%	13,333	19%	39%
30-39	312	24%	20,550	43%	152	24%	9,361	43%	464	24%	29,911	43%	31%
40-49	427	33%	13,308	28%	209	33%	4,665	22%	636	33%	17,973	26%	26%
Over 49	265	21%	5,527	12%	128	20%	1,897	9%	393	21%	7,424	11%	26%
<b>Total</b>	<b>1,276</b>	<b>100%</b>	<b>47,922</b>	<b>100%</b>	<b>628</b>	<b>100%</b>	<b>21,636</b>	<b>100%</b>	<b>1,904</b>	<b>100%</b>	<b>69,558</b>	<b>100%</b>	<b>31%</b>

(1) Includes every new report of HIV infection received during the 12 month period, regardless of stage of disease (HIV or AIDS) at time of first report.

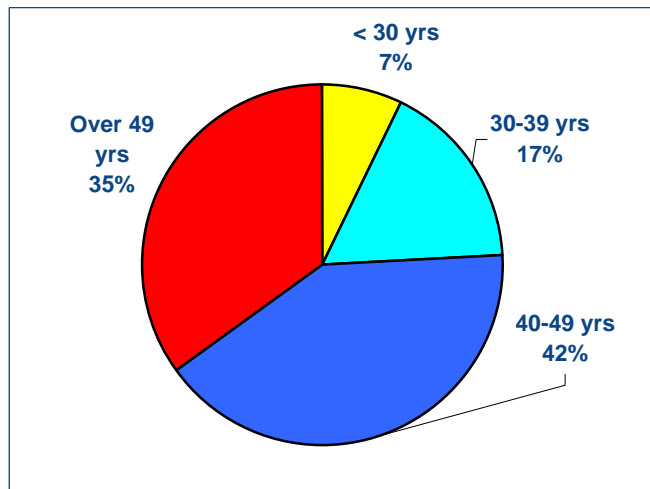
Note: Percentages may not add to 100 due to rounding.

**Table 7. New Jersey Residents Living with HIV/AIDS as of December 31, 2007  
Current Age by Gender**

Current Age	MALE		FEMALE		TOTAL		Percentage of Prevalent Cases Who Are Female
	No.	(%)	No.	(%)	No.	(%)	
0-12	107	0%	113	1%	220	1%	51%
13-19	236	1%	236	2%	472	1%	50%
20-29	1,122	5%	721	6%	1,843	5%	39%
30-39	3,428	15%	2,500	20%	5,928	17%	42%
40-49	8,900	40%	5,111	42%	14,011	41%	36%
Over 49	8,406	38%	3,590	29%	11,996	35%	30%
<b>Total</b>	<b>22,199</b>	<b>100%</b>	<b>12,271</b>	<b>100%</b>	<b>34,470</b>	<b>100%</b>	<b>36%</b>

Note: Percentages may not add to 100 due to rounding.

**Figure 4. Percentage Living with HIV/AIDS by Age Group**



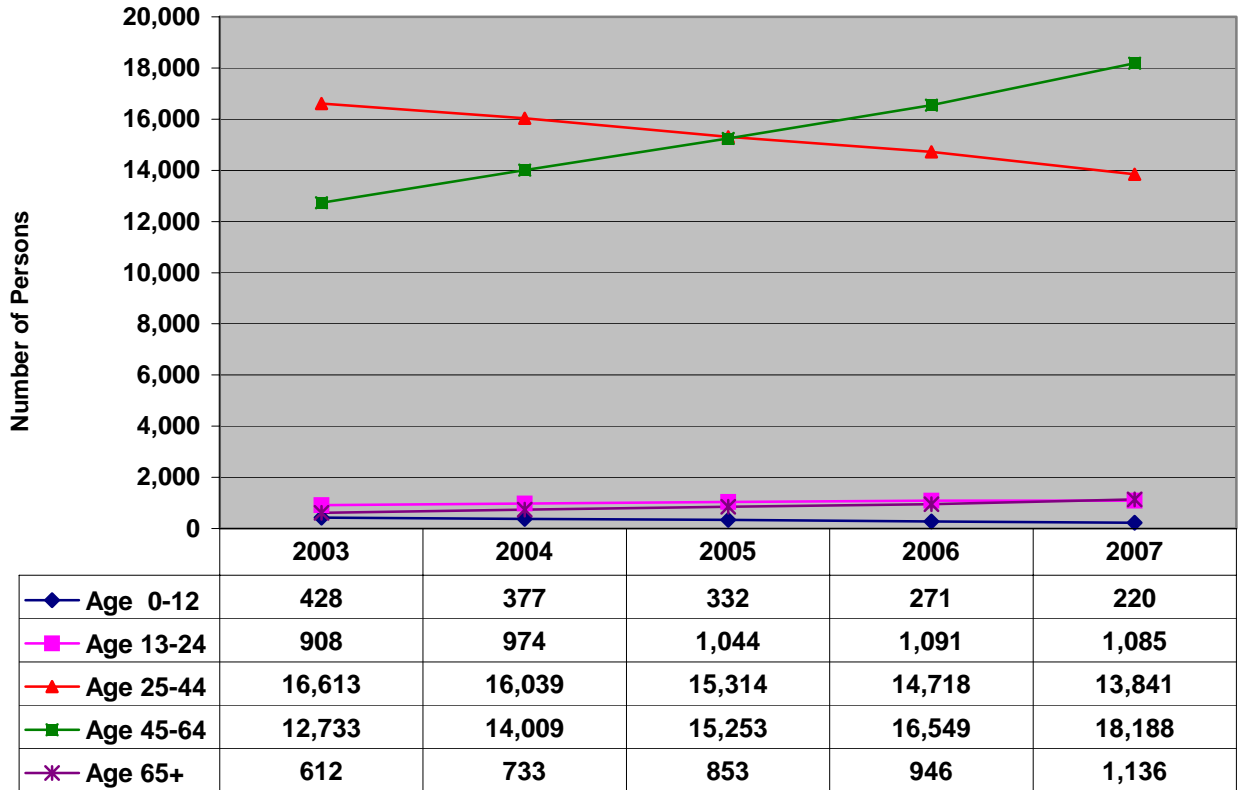
Recently reported cases of adult/adolescent HIV and AIDS are older at diagnosis than previously reported cases.

Seventy-six percent of those living with HIV or AIDS are 40 years of age or older.

Thirty-six percent of those living with HIV/AIDS are females.

Nearly seven out of ten females living with HIV/AIDS are currently 20-49 years old.

**Figure 5. Estimated Number of Persons Living with HIV/AIDS in New Jersey by Age Group 2003-2007**



Source: New Jersey HIV/AIDS Reporting System as of December 31, 2007.



The relative distribution of persons living with HIV/AIDS for ages younger than 25 has not changed significantly within the last five years, while those aged 25-44 declined in the last years, possibly largely by aging into the next older age group. However, there has been a steady increase in the number of persons living with HIV/AIDS who are 45 to 64 years of age. This increase may be due to the fact that people are living longer with HIV/AIDS, and that recently reported cases of HIV/AIDS are older at diagnosis than in the past.

## PEDIATRIC DATA

**Table 8. New Jersey Pediatric (1) Cumulative HIV and AIDS Cases  
Data Reported as of December 31, 2007  
Exposure Category (2) by Race/Ethnicity**

Mode of Transmission (2)	White	Black	Hispanic	Other/Not Reported	Total
Mother With/At Risk of HIV (3)	164	839	240	4	1,247
Hemophilia/Coagulation Disorder	10	7	5	0	22
Transfusion/Blood Components	15	3	4	0	22
Risk Not Reported/Other Risk	7	28	7	2	44
<b>Total</b>	<b>196</b>	<b>877</b>	<b>256</b>	<b>6</b>	<b>1,335</b>
<b>% Perinatally Infected</b>	<b>84%</b>	<b>96%</b>	<b>94%</b>	<b>67%</b>	<b>93%</b>

(1) Includes all patients under 13 years of age at time of HIV infection, who were New Jersey residents or diagnosed in New Jersey.

(2) Cases with more than one risk, other than the combinations listed, are tabulated only in the risk group listed first.

(3) Epidemiologic data suggest transmission from an infected mother to her fetus or infant during the perinatal period.

**Table 9. New Jersey Born HIV Pediatric Exposures (1) by Current Status  
and Year of Birth for Children Born 1993-2007 - Data as of December 31, 2007**

Birth Year	Infected (2)		Indeterminate (3)		Seroreverter (4)		Total Reported
	No.	(%)	No.	(%)	No.	(%)	No.
1993	77	21%	90	25%	197	54%	364
1994	56	17%	118	35%	165	49%	339
1995	50	15%	94	28%	186	56%	330
1996	39	13%	71	24%	182	62%	292
1997	33	12%	80	29%	167	60%	280
1998	23	8%	92	30%	189	62%	304
1999	14	6%	68	28%	161	66%	243
2000	15	6%	71	26%	186	68%	272
2001	10	5%	65	30%	140	65%	215
2002	5	2%	67	29%	156	68%	228
2003	7	3%	52	26%	142	71%	201
2004	8	2%	44	20%	165	76%	217
2005	7	2%	52	26%	138	70%	197
2006*	2	1%	37	27%	98	72%	137
2007*	1	1%	60	73%	21	26%	82

(1) Exposure - Child was exposed to HIV during pregnancy/delivery.

(2) Infected - Child is infected with HIV/AIDS.

(3) Indeterminate - Child was exposed but actual status of infection is unknown.

(4) Seroreverter - Child was perinatally exposed and proven to be uninfected.

\* Year 2006 and 2007 data is incomplete

**Table 10. New Jersey Pediatric Cases Living with HIV/AIDS (1)  
by Race/Ethnicity and Current Age  
December 31, 2007**

Race/Ethnicity	Current Age						Total	
	< 5 Yrs.		5-12 Yrs.		≥ 13 Yrs.		Total	
	No.	(%)	No.	(%)	No.	(%)	No.	(%)
White	0	0%	19	10%	87	15%	106	13%
Black	18	75%	144	73%	367	64%	529	67%
Hispanic	5	21%	33	17%	116	20%	154	19%
Other	1	4%	0	0%	2	0%	3	0%
<b>Total</b>	<b>24</b>	<b>3%</b>	<b>196</b>	<b>25%</b>	<b>572</b>	<b>72%</b>	<b>792</b>	<b>100%</b>

(1) Living Pediatric HIV/AIDS cases who were New Jersey residents or diagnosed in New Jersey.



Most pediatric cases are a result of perinatal transmission.

Perinatal transmission has been reduced to less than 2 percent.

Approximately 250 Individuals infected perinatally in the early 1990's are now approaching adulthood.

Eighty-six percent of pediatric cases living with HIV/AIDS are minorities.

# The IMPACT Initiative

**Intensive Mobilization to Promote AIDS Awareness through Community-based Technologies (IMPACT)** is a city-by-city community mobilization initiative designed to galvanize and support African American leaders to reduce the spread of HIV/AIDS in cities with the highest prevalence of HIV/AIDS.

**Table 11. African Americans Living with HIV/AIDS:  
Number of Cases and Rank  
for Ten IMPACT Cities as of December 31, 2007**

Area of Residence	Rank among 10 IMPACT Cities in African American HIV/AIDS Prevalence Rate	Number of African Americans Living with HIV/AIDS	African American Population	Ratio of African Americans Living with HIV/AIDS to Overall African American Resident Population
Newark	1	4,745	142,083	One in 30
Atlantic City	2	513	17,168	One in 33
Elizabeth	3	537	22,329	One in 42
Jersey City	4	1,502	64,389	One in 43
Paterson	5	1,002	46,882	One in 47
East Orange	6	1,228	61,604	One in 50
Trenton	8	779	43,497	One in 56
Irvington	7	883	48,852	One in 55
Plainfield	9	388	28,698	One in 74
City of Camden	10	431	39,753	One in 92
Ten IMPACT Cities (combined)		12,008	515,255	One in 43

**Note:** Table includes only those persons known to be infected with HIV. Population figures are based on the 2000 United States Census. Municipal population estimates by race/ethnicity are only available for the Census year. Estimates may overstate changes since only numerators are changing. African American includes single race only, not Hispanic.



Sixty-three percent of the state's African Americans living with HIV/AIDS reside in one of the 10 IMPACT cities. However, these cities show wide variation in HIV/AIDS prevalence.

Newark and Atlantic City have the highest prevalence rates of African Americans living with HIV/AIDS. One in 30 African American residents in Newark, and one in 33 African American residents in Atlantic City, are living with HIV/AIDS.

Newark has the highest number of African Americans living with HIV/AIDS among the 10 cities. One in four African Americans living with HIV/AIDS in the state resides in Newark.

For More Information  
go to the  
Division of HIV/AIDS Services  
Website at:

<http://www.state.nj.us/health/aids>

or call the

New Jersey Department of Health and Senior Services  
Division of HIV/AIDS Services  
Epidemiologic Services Unit  
at  
(609) 984-5940