

New Jersey Department of Health and Senior Services
Communicable Disease Service
Influenza Activity Summary
Week Ending April 7, 2007 (MMWR Week 14)

Influenza activity level: **REGIONAL**

No Activity- At least 2 of 3 parameters at or below state baseline **AND** no lab confirmed cases

Sporadic – At least 2 of 3 parameters above state baseline **AND** confirmed laboratory cases anywhere in the state within previous 3 weeks **OR** at least one laboratory confirmed outbreak in an institution anywhere in the state

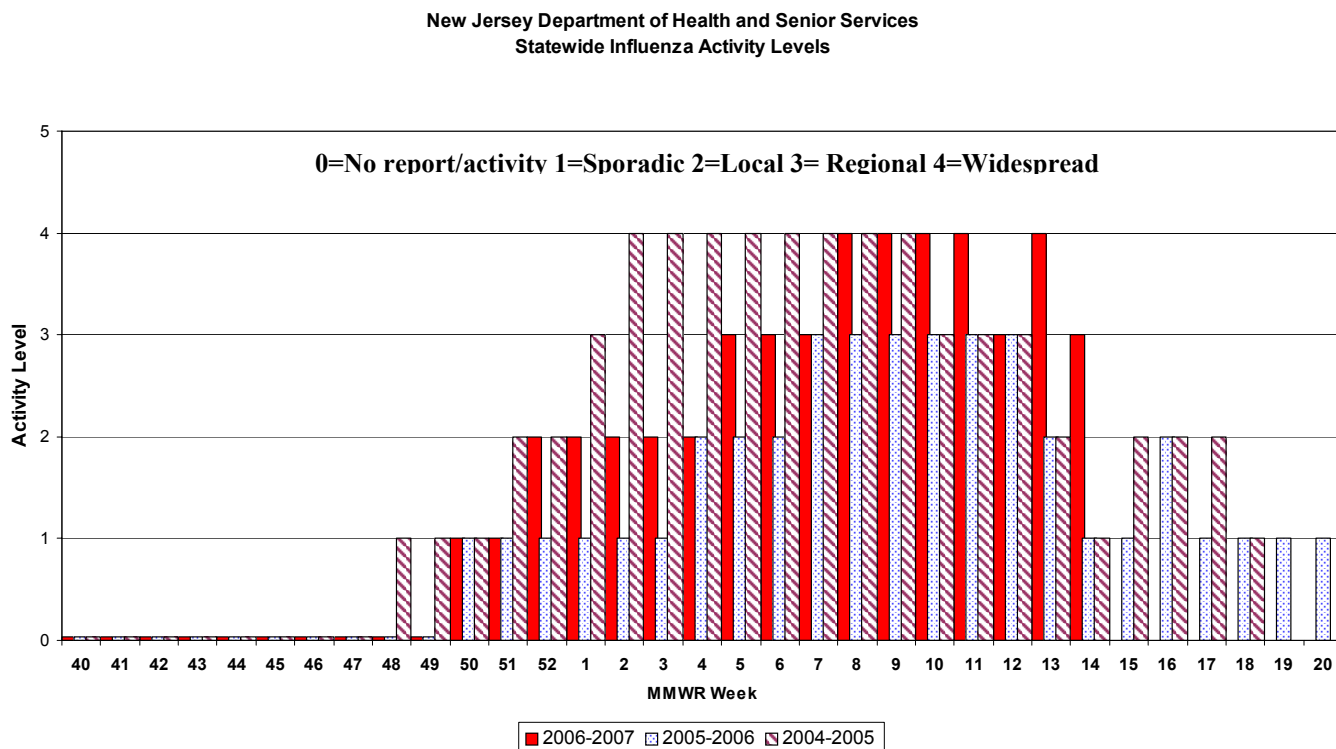
Local – At least 2 of 3 parameters above state baseline in a single county **AND** confirmed laboratory cases from that same county within the previous 3 weeks (other counties may be above baseline without lab confirmed cases) **OR** confirmed outbreaks in 2 or more institutions in a single county

Regional – At least 2 of 3 parameters above state baseline in ≥ 2 but ≤ 10 counties **AND** laboratory confirmed cases from these same counties in past 3 weeks **OR** confirmed outbreaks institutions in ≥ 2 but ≤ 10 counties

Widespread – At least 2 of 3 parameters above state baseline in > 10 counties **OR** institutional outbreaks in > 10 counties **AND** lab confirmed influenza cases in previous 3 weeks.

Parameter = School, emergency department, or long term care weekly surveillance data

Baseline is calculated by taking the average of statewide percentages of ILI for a 3 year (2004, 2005, 2006) period during months when influenza is less likely to be circulating (May-August). Weeks in which less than 4 counties reported were not included in the calculation.



Regional Data

LOCAL ACTIVITY – NE and CW
SPORADIC ACTIVITY – NW and CE
NO ACTIVITY- SOUTH

NOTE: Only one county in the NE and CW public health regions were above state baseline and had laboratories confirmed influenza by viral isolation in the previous three weeks. In the NW and CE public health region no single county had positive laboratories and parameters above state baseline, however, positive laboratory reports were received in these 2 regions. The parameters for the south public health region were not above baseline and no positive laboratories were received in the past 3 weeks.

Public Health Regions

NW Region (Morris, Passaic, Sussex, Warren)

NE Region (Bergen, Essex, Hudson)

CW Region (Hunterdon, Mercer, Somerset)

CE Region (Middlesex, Monmouth, Ocean, Union)

South Region (Atlantic, Burlington, Camden, Cape May, Cumberland, Gloucester, Salem)

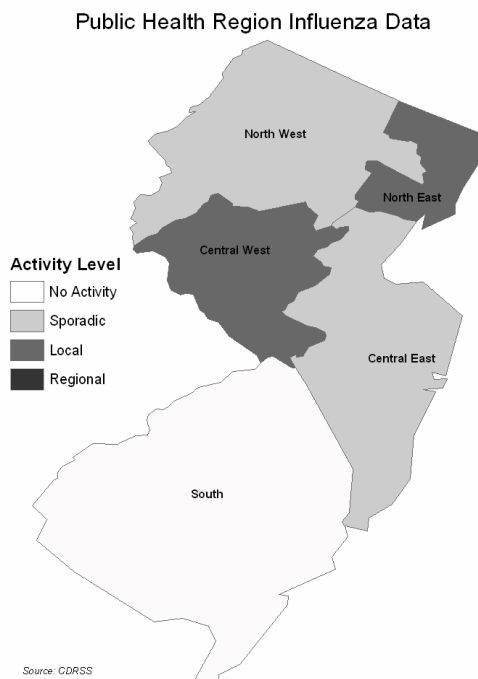
No Activity- At least 2 of 3 parameters at or below state baseline **AND** no lab confirmed cases in the public health region

Sporadic – At least 2 of 3 parameters above state baseline **AND** confirmed laboratory cases anywhere in the public health region **OR** at least one laboratory confirmed outbreak in an institution anywhere in the public health region

Local – At least 2 or 3 parameters above state baseline in a single county of a public health region **AND** confirmed laboratory cases from that same county within the previous 3 weeks (other counties may be above baseline without lab confirmed cases) **OR** confirmed outbreaks in 2 or more institutions in a single county of a public health region

Regional – At least 2 of 3 parameters above state baseline in at least half of counties of public health region **AND** laboratory confirmed cases from these same counties in past 3 weeks **OR** confirmed outbreaks institutions in at least half of counties of public health region counties

Widespread – Not used for public health region data



Laboratory Surveillance

To date, 367 influenza specimens were found to be positive by viral culture. The below chart describes the number and type of influenza by MMWR week and county.

| Influenza Type | Number positive | County Data | | |
|----------------|-----------------|-------------|------------|-----------|
| | | County | # positive | MMWR Week |
| Influenza A H1 | 107 | Camden | 1 | 50 |
| | | Bergen | 1 | 51 |
| | | Morris | 1 | 2 |
| | | Union | 1 | 2 |
| | | Camden | 1 | 4 |
| | | Essex | 2 | 4 |
| | | Middlesex | 2 | 4 |
| | | Mercer | 1 | 5 |
| | | Monmouth | 1 | 5 |
| | | Cape May | 1 | 5 |
| | | Camden | 1 | 5 |
| | | Monmouth | 4 | 6 |
| | | Union | 2 | 6 |
| | | Camden | 1 | 6 |
| | | Middlesex | 1 | 6 |
| | | Essex | 3 | 7 |
| | | Middlesex | 4 | 7 |
| | | Monmouth | 2 | 7 |
| | | Morris | 1 | 7 |
| | | Somerset | 3 | 7 |
| | | Union | 4 | 7 |
| | | Warren | 1 | 7 |
| | | Essex | 4 | 8 |
| | | Hudson | 1 | 8 |
| | | Middlesex | 3 | 8 |
| | | Mercer | 1 | 8 |
| | | Monmouth | 5 | 8 |
| | | Morris | 1 | 8 |
| | | Somerset | 3 | 8 |
| | | Union | 3 | 8 |
| | | Warren | 1 | 8 |
| | | Essex | 2 | 9 |
| | | Gloucester | 1 | 9 |
| | | Mercer | 3 | 9 |
| | | Middlesex | 4 | 9 |
| | | Monmouth | 3 | 9 |
| | | Morris | 1 | 9 |
| | | Passaic | 1 | 9 |
| | | Somerset | 3 | 9 |
| | | Warren | 1 | 9 |
| | | Cape May | 1 | 10 |
| | | Essex | 1 | 10 |
| | | Gloucester | 2 | 10 |
| | | Hunterdon | 2 | 10 |
| | | Middlesex | 7 | 10 |
| | | Monmouth | 2 | 10 |
| | | Ocean | 1 | 10 |
| | | Union | 2 | 10 |
| | | Unknown | 1 | 10 |
| | | Hunterdon | 1 | 11 |
| | | Middlesex | 2 | 11 |
| | | Monmouth | 1 | 11 |
| | | Passaic | 1 | 11 |
| | | Union | 1 | 11 |
| | | Unknown | 1 | 11 |

| Influenza Type | Number positive | County Data | | |
|----------------|-----------------|--------------|------------|-----------|
| | | County | # positive | MMWR Week |
| Influenza A H3 | 117 | Middlesex | 1 | 1 |
| | | Essex | 1 | 3 |
| | | Hunterdon | 1 | 3 |
| | | Monmouth | 1 | 3 |
| | | Monmouth | 1 | 4 |
| | | Passaic | 1 | 4 |
| | | Unknown | 1 | 4 |
| | | Mercer | 1 | 5 |
| | | Sussex | 1 | 5 |
| | | Passaic | 1 | 5 |
| | | Middlesex | 1 | 6 |
| | | Monmouth | 1 | 6 |
| | | Mercer | 1 | 6 |
| | | Passaic | 2 | 6 |
| | | Hudson | 1 | 7 |
| | | Mercer | 4 | 7 |
| | | Middlesex | 6 | 7 |
| | | Monmouth | 1 | 7 |
| | | Morris | 1 | 7 |
| | | Ocean | 1 | 7 |
| | | Passaic | 2 | 7 |
| | | Somerset | 3 | 7 |
| | | Camden | 1 | 8 |
| | | Essex | 1 | 8 |
| | | Gloucester | 2 | 8 |
| | | Mercer | 1 | 8 |
| | | Middlesex | 6 | 8 |
| | | Monmouth | 1 | 8 |
| | | Morris | 2 | 8 |
| | | Passaic | 1 | 8 |
| | | Somerset | 1 | 8 |
| | | Union | 2 | 8 |
| | | Out of state | 1 | 8 |
| | | Bergen | 2 | 9 |
| | | Essex | 2 | 9 |
| | | Gloucester | 8 | 9 |
| | | Hunterdon | 2 | 9 |
| | | Hudson | 1 | 9 |
| | | Mercer | 2 | 9 |
| | | Middlesex | 5 | 9 |
| | | Monmouth | 1 | 9 |
| | | Morris | 1 | 9 |
| | | Somerset | 1 | 9 |
| | | Out of state | 2 | 9 |
| | | Essex | 3 | 10 |
| | | Gloucester | 5 | 10 |
| | | Hudson | 2 | 10 |
| | | Hunterdon | 4 | 10 |
| | | Middlesex | 3 | 10 |
| | | Monmouth | 4 | 10 |
| | | Morris | 1 | 10 |
| | | Passaic | 3 | 10 |
| | | Somerset | 7 | 10 |
| | | Union | 2 | 10 |
| | | Unknown | 2 | 10 |
| | | Out of state | 1 | 10 |
| | | Hunterdon | 1 | 11 |
| | | Passaic | 1 | 11 |

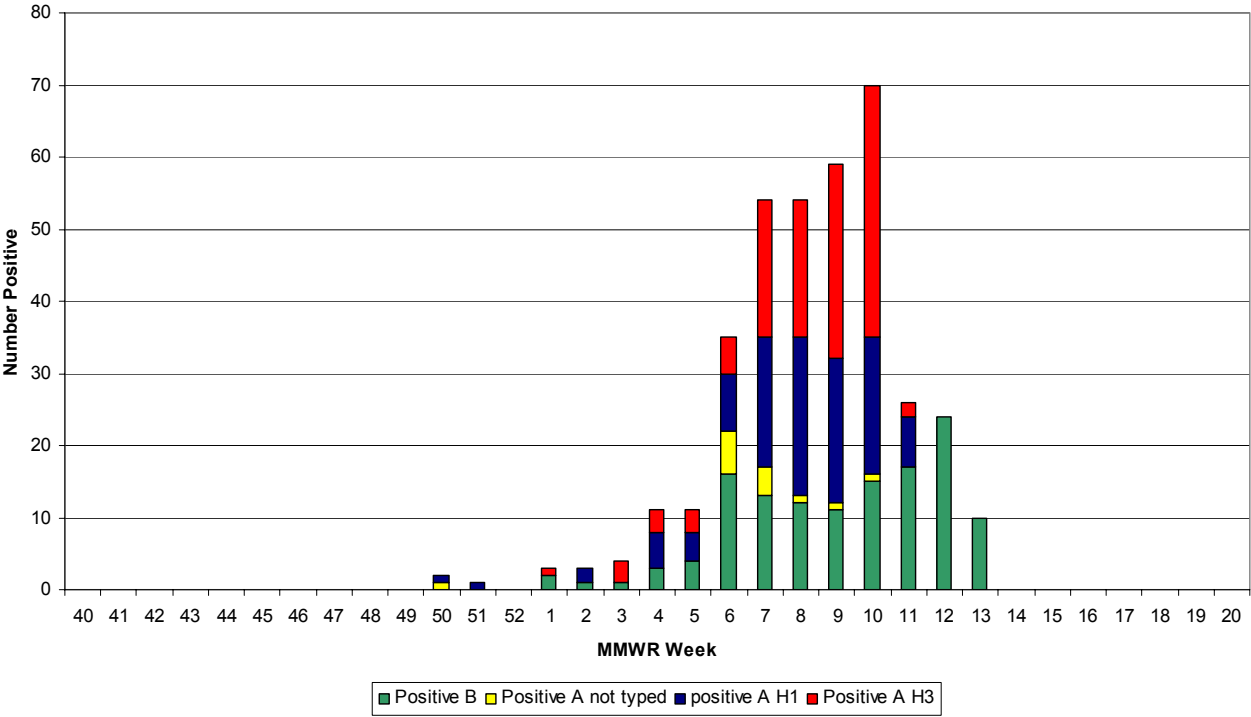
| Influenza Type | Number positive | County Data | | |
|----------------|-----------------|-------------|------------|-----------|
| | | County | # positive | MMWR Week |
| Influenza B | 129 | Somerset | 1 | 1 |
| | | Warren | 1 | 1 |
| | | Passaic | 1 | 2 |
| | | Somerset | 1 | 3 |
| | | Essex | 1 | 4 |
| | | Monmouth | 1 | 4 |
| | | Morris | 1 | 4 |
| | | Monmouth | 3 | 5 |
| | | Sussex | 1 | 5 |
| | | Bergen | 1 | 6 |
| | | Essex | 1 | 6 |
| | | Gloucester | 1 | 6 |
| | | Mercer | 1 | 6 |
| | | Middlesex | 1 | 6 |
| | | Ocean | 2 | 6 |
| | | Monmouth | 7 | 6 |
| | | Morris | 1 | 6 |
| | | Warren | 1 | 6 |
| | | Burlington | 1 | 7 |
| | | Essex | 1 | 7 |
| | | Hudson | 1 | 7 |
| | | Middlesex | 1 | 7 |
| | | Monmouth | 4 | 7 |
| | | Morris | 1 | 7 |
| | | Somerset | 1 | 7 |
| | | Union | 3 | 7 |
| | | Essex | 2 | 8 |
| | | Mercer | 1 | 8 |
| | | Middlesex | 1 | 8 |
| | | Monmouth | 4 | 8 |
| | | Morris | 2 | 8 |
| | | Passaic | 2 | 8 |
| | | Gloucester | 1 | 9 |
| | | Middlesex | 4 | 9 |
| | | Monmouth | 3 | 9 |
| | | Passaic | 1 | 9 |
| | | Somerset | 1 | 9 |
| | | Union | 1 | 9 |
| | | Atlantic | 1 | 10 |
| | | Essex | 2 | 10 |
| | | Gloucester | 1 | 10 |
| | | Hunterdon | 1 | 10 |
| | | Middlesex | 3 | 10 |
| | | Monmouth | 2 | 10 |
| | | Morris | 1 | 10 |
| | | Ocean | 1 | 10 |
| | | Somerset | 1 | 10 |
| | | Union | 2 | 10 |
| | | Bergen | 1 | 11 |
| | | Essex | 1 | 11 |
| | | Hudson | 1 | 11 |
| | | Hunterdon | 1 | 11 |
| | | Mercer | 1 | 11 |
| | | Middlesex | 1 | 11 |
| | | Monmouth | 1 | 11 |
| | | Morris | 1 | 11 |

| | | | |
|-----------------------|-----------|---|----|
| Influenza B Continued | Passaic | 1 | 11 |
| | Somerset | 1 | 11 |
| | Union | 6 | 11 |
| | Unknown | 1 | 11 |
| | Bergen | 1 | 12 |
| | Essex | 2 | 12 |
| | Hunterdon | 1 | 12 |
| | Mercer | 1 | 12 |
| | Middlesex | 4 | 12 |
| | Monmouth | 1 | 12 |
| | Morris | 2 | 12 |
| | Ocean | 1 | 12 |
| | Passaic | 2 | 12 |
| | Somerset | 1 | 12 |
| | Union | 7 | 12 |
| | Unknown | 1 | 12 |
| | Essex | 2 | 13 |
| | Hunterdon | 1 | 13 |
| | Middlesex | 1 | 13 |
| | Passaic | 1 | 13 |
| | Union | 3 | 13 |
| | Unknown | 2 | 13 |

| Influenza Type | Number positive | County Data | | |
|-------------------------|-----------------|-------------|------------|-----------|
| | | County | # positive | MMWR Week |
| Influenza A – Not typed | 14 | Camden | 1 | 50 |
| | | Bergen | 3 | 6 |
| | | Passaic | 2 | 6 |
| | | Sussex | 1 | 6 |
| | | Bergen | 2 | 7 |
| | | Hudson | 1 | 7 |
| | | Union | 1 | 7 |
| | | Bergen | 1 | 8 |
| | | Unknown | 1 | 9 |
| | | Bergen | 1 | 10 |

NOTE: Information on county of residence may be obtained after original laboratory report. The county of residence is updated each week to account the correct information on each case.

New Jersey Department of Health and Senior Services
Influenza Laboratory Report
Viral Culture Positive Specimens by MMWR Week

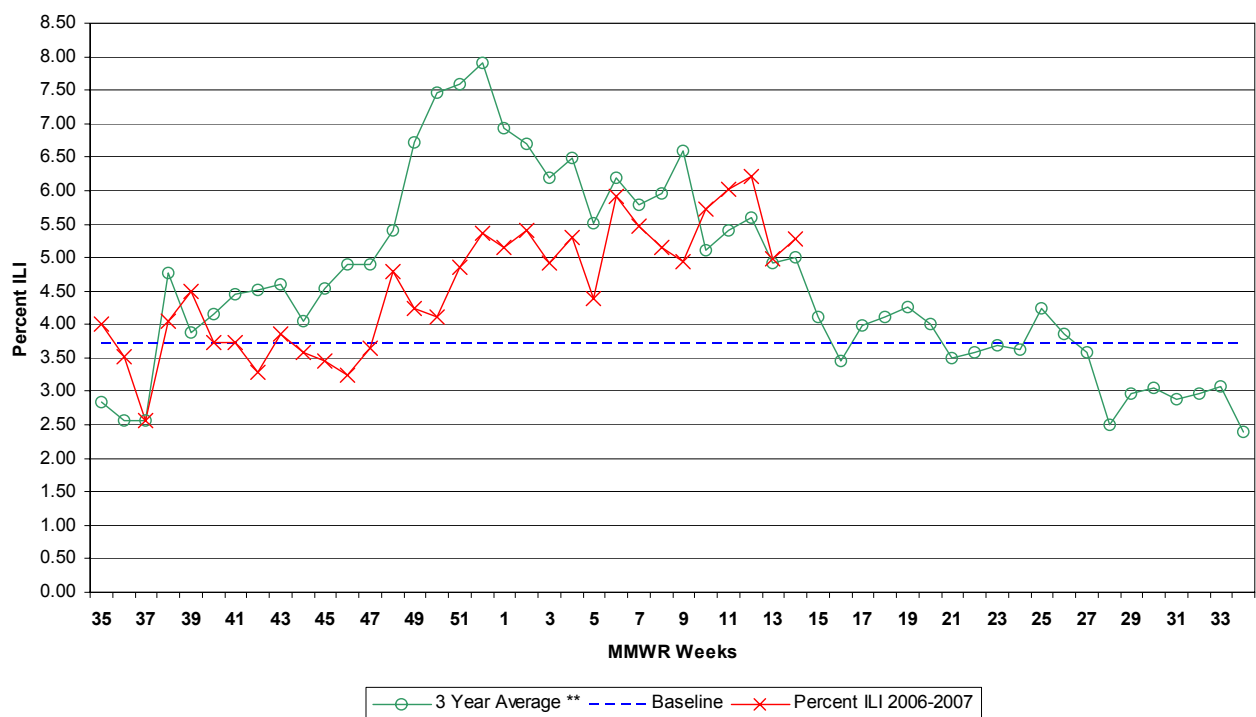


Influenza-like Illness (ILI) Surveillance*

Emergency Departments

During week 14, 5.27% ILI was reported statewide from emergency departments. This is an increase over the previous week (4.98%). The percent ILI for each county ranged from 0.00 to 20.00%. The percent ILI for this same week last year was 3.58% in emergency departments. The percent ILI for the northwest (7.00%), northeast (6.67%), central west (8.56%), and central east (6.10%) public health regions were above state baseline (3.71%).

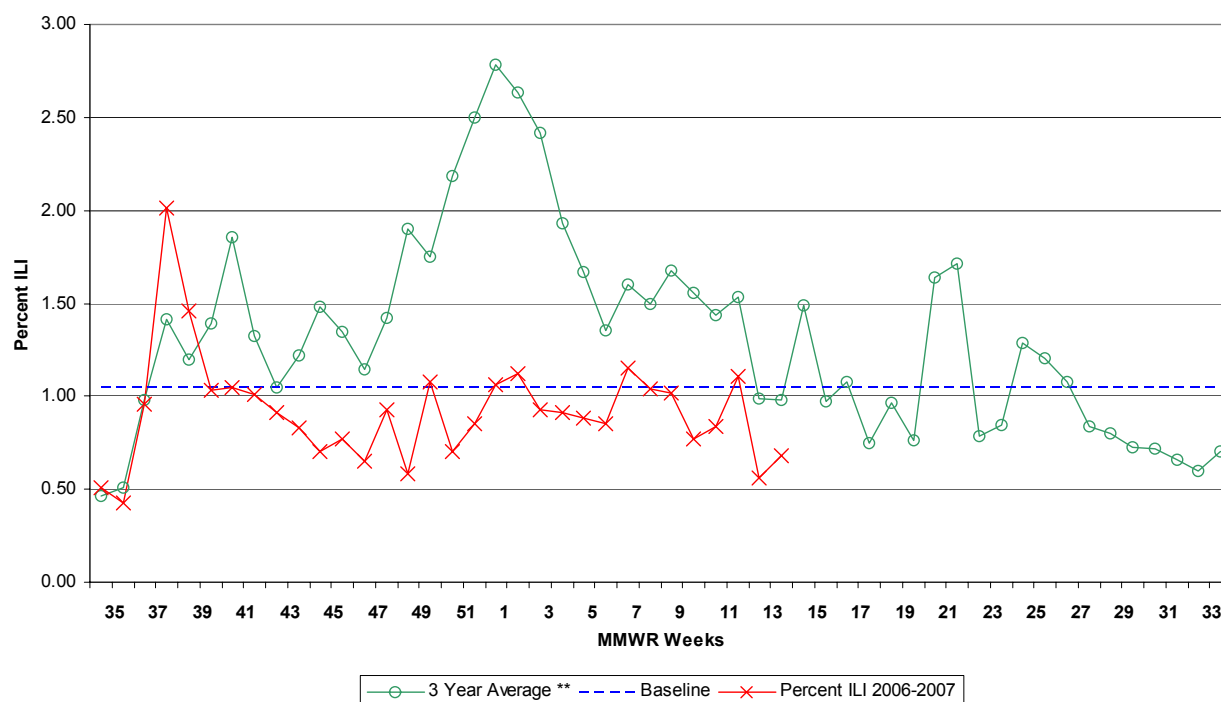
New Jersey Department of Health and Senior Services Influenza-like Activity - Emergency Departments



Long-term Care Facilities

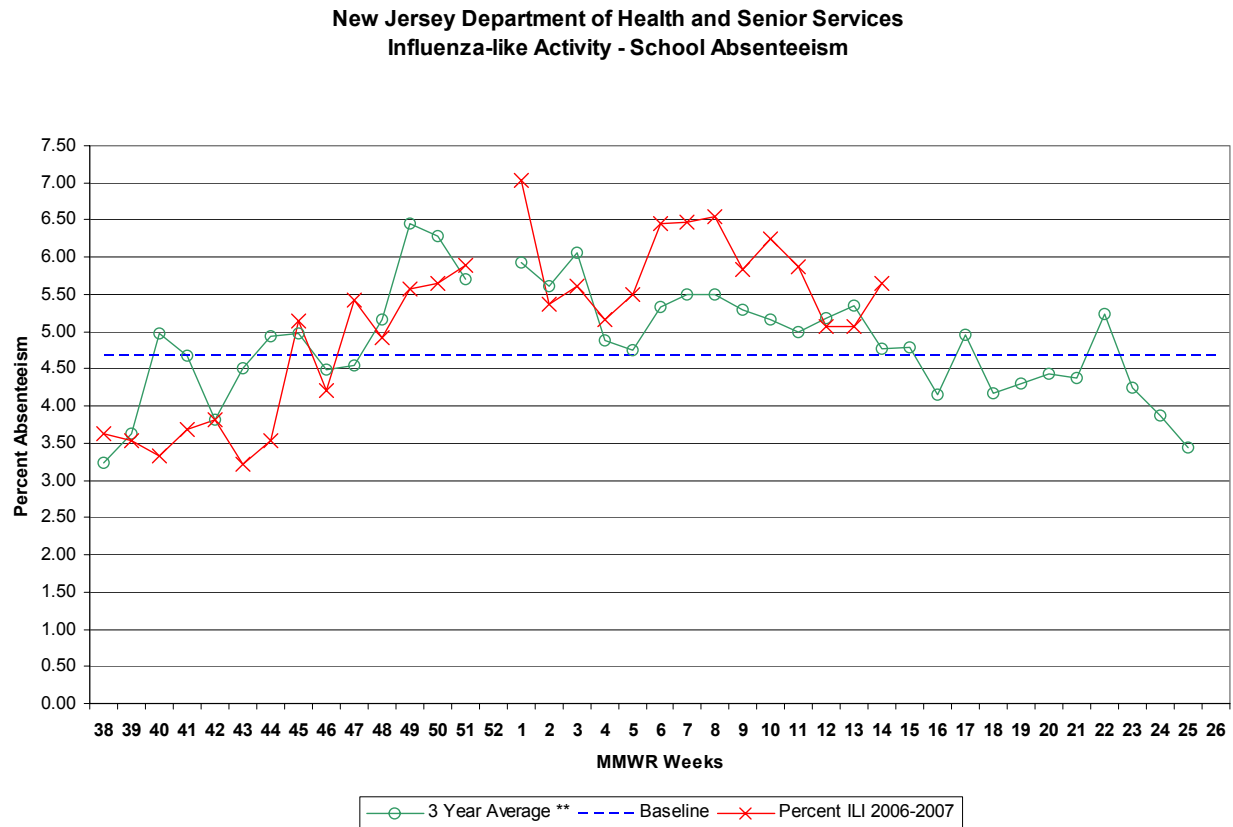
During week 14, 0.68% ILI was reported statewide from long term care facilities. This is an increase over the previous week (0.56%). The percent ILI for each county ranged from 0.00% to 2.42%. The percent ILI for this same week last year was 1.15% in long-term care facilities. The percent ILI was not above baseline (1.05%) in any public health region.

New Jersey Department of Health and Senior Services Influenza-like Activity - Long Term Care Facilities



School Absenteeism

During week 14, schools reported 5.64% absenteeism. This is an increase over the previous week (5.06%). The percent ILI for each county ranged from 2.82 – 8.65%. The percent absent for this same week last year was 5.00%. The percent ILI for the northwest (5.16%), the northeast (5.80%), the central east (5.82%) and the south (6.02%) public health regions were above state baseline (4.68%).



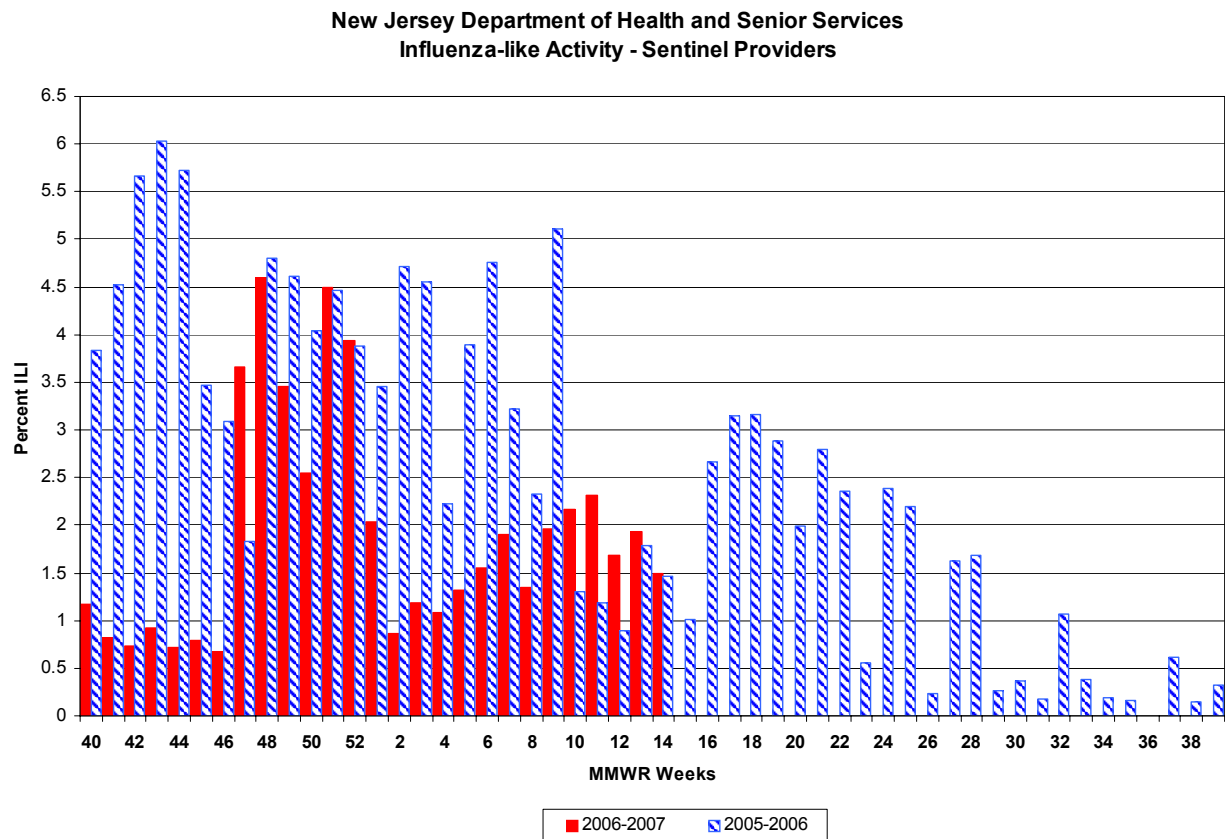
Sentinel Provider Surveillance

During week 14, 1.49% of sentinel provider patient visits were due to ILI. These data reflect reports from three (6%) of the enrolled sentinel providers.

UPDATE

During week 13, 1.93% of sentinel provider patient visits were due to ILI. These data reflect reports from eleven (23%) of the enrolled sentinel providers.

During week 12, 1.68% of sentinel provider patient visits were due to ILI. These data reflect reports from sixteen (34%) of the enrolled sentinel providers.



Pediatric Influenza Surveillance

To date, NJDHSS has received 90 reports of pediatric illness. To date, ten cases have met the case definition for pediatric illness or death associated with influenza.

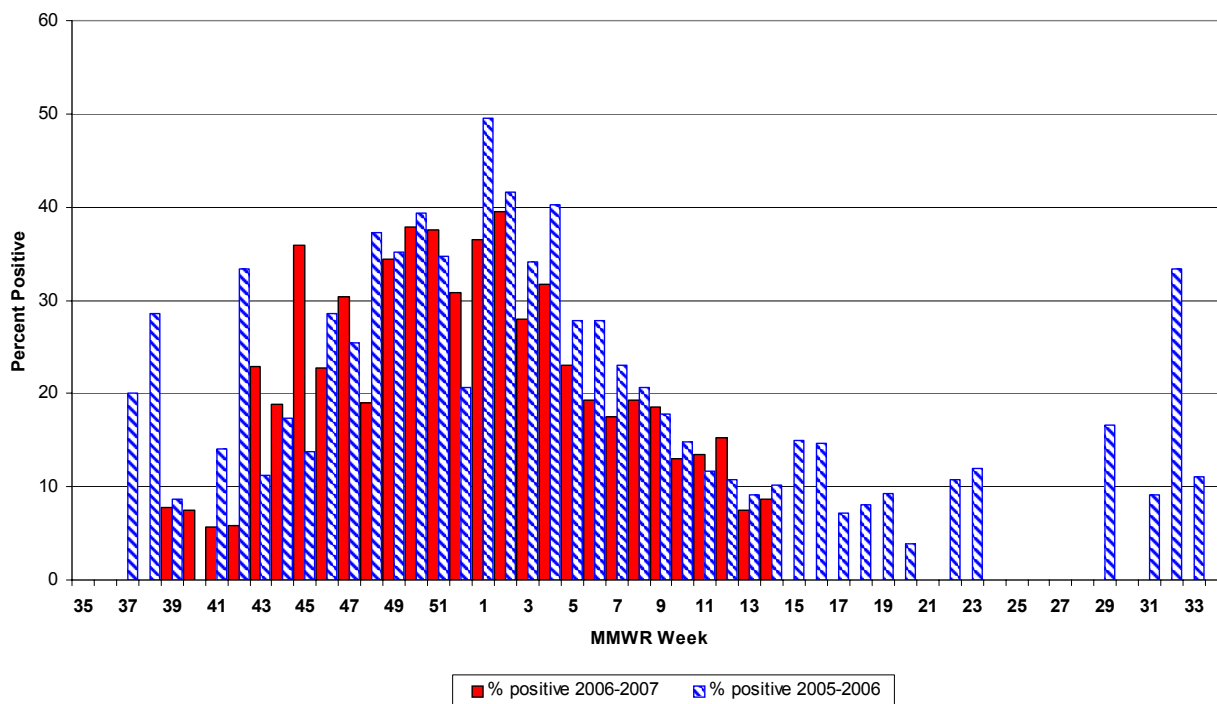
122 City Mortality Report

During week 13, 6.15% of all deaths reported by the vital statistics offices in 6 New Jersey cities (i.e., Camden, Jersey City, Elizabeth, Newark, Paterson, Trenton) were due to pneumonia or influenza. This was an increase over the previous week (5.70%). The percentage of death due to pneumonia or influenza for this same week last year was 5.77%.

RSV Reports

During week 14, 8.74% of all RSV samples tested were positive. This was an increase over the previous week 7.49%. The percent of samples positive RSV for this same week last year was 10.11%.

**New Jersey Department of Health and Senior Services
Respiratory Syncytial Virus (RSV) Surveillance by Week**



Additional Information

For additional information regarding influenza surveillance please visit the following websites.

<http://nj.gov/health/flu/surveillance.shtml>

<http://www.cdc.gov/flu/>

* Baseline is calculated by taking the average of statewide percentages of ILI for a 3 year (2004, 2005, 2006) period during months when influenza is less likely to be circulating (May-August). Weeks in which less than 4 counties reported were not included in the calculation.

**Three year average is an average of the 2003-2004, 2004-2005, and 2005-2006 influenza seasons.



| | Long Term Care | | | Schools | | | Hospital Emergency Department | | | RSV Tests | |
|---------------------|----------------|--------------------|-------------|------------|--------------------|-------------|-------------------------------------|--------------------|-------------|------------|-----------------------------|
| County | # Enrolled | # Reports Rec'd | % ILI | # Enrolled | # Reports Rec'd | % Absent | # Enrolled | # Reports Rec'd | % ILI | # Positive | Total Tests Performed |
| ATLANTIC | 5 | 2 | 2.16 | 16 | 14 | 7.63 | 4 | 4 | 1.22 | 4 | 26 |
| BERGEN | 3 | 0 | 0.00 | 14 | 8 | 4.31 | 6 | 0 | 0.00 | 1 | 1 |
| BURLINGTON | 6 | 2 | 0.00 | 103 | 55 | 5.61 | 3 | 2 | 0.40 | 4 | 13 |
| CAMDEN | 7 | 5 | 0.37 | 17 | 5 | 5.15 | 7 | 6 | 3.69 | 0 | 0 |
| CAPE MAY | 4 | 3 | 0.00 | 11 | 8 | 4.41 | 1 | 1 | 10.10 | 0 | 4 |
| CUMBERLAND | 4 | 2 | 1.39 | 18 | 10 | 7.70 | 3 | 3 | 4.18 | 0 | 1 |
| ESSEX | 14 | 2 | 0.44 | 31 | 5 | 8.65 | 11 | 6 | 6.77 | 5 | 68 |
| GLOUCESTER | 2 | 1 | 0.00 | 4 | 3 | 3.01 | 2 | 2 | 1.64 | 0 | 0 |
| HUDSON | 10 | 2 | 1.95 | 76 | 41 | 5.56 | 8 | 1 | 6.25 | 0 | 12 |
| HUNTERDON | 4 | 4 | 0.44 | 8 | 4 | 2.92 | 1 | 1 | 2.90 | 2 | 5 |
| MERCER | 10 | 4 | 0.20 | 12 | 0 | 0.00 | 5 | 3 | 4.55 | 0 | 2 |
| MIDDLESEX | 2 | 1 | 0.00 | 20 | 2 | 3.54 | 5 | 2 | 15.47 | 1 | 52 |
| MONMOUTH | 6 | 3 | 0.26 | 25 | 2 | 6.67 | 5 | 2 | 0.91 | 0 | 0 |
| MORRIS | 11 | 0 | 0.00 | 14 | 0 | 0.00 | 4 | 0 | 0.00 | 0 | 0 |
| OCEAN | 6 | 2 | 0.00 | 27 | 20 | 5.70 | 4 | 3 | 4.46 | 0 | 0 |
| PASSAIC | 8 | 4 | 0.77 | 22 | 7 | 4.19 | 6 | 1 | 4.81 | 0 | 0 |
| SALEM | 4 | 1 | 0.00 | 5 | 0 | 0.00 | 1 | 1 | 0.00 | 0 | 0 |
| SOMERSET | 5 | 1 | 2.42 | 53 | 6 | 2.82 | 2 | 1 | 20.00 | 0 | 0 |
| SUSSEX | 5 | 5 | 0.85 | 20 | 18 | 5.51 | 2 | 2 | 3.67 | 1 | 4 |
| UNION | 4 | 1 | 0.00 | 82 | 16 | 5.93 | 5 | 5 | 3.51 | 0 | 15 |
| UNKNOWN | 0 | 0 | 0.00 | 0 | 0 | 0.00 | 0 | 0 | 0.00 | 0 | 0 |
| WARREN | 7 | 5 | 1.19 | 21 | 19 | 5.06 | 2 | 2 | 14.07 | 0 | 3 |
| NW Region | 31 | 14 | 0.90 | 77 | 44 | 5.16 | 14 | 5 | 7.00 | 1 | 7 |
| NE Region | 27 | 4 | 0.98 | 121 | 54 | 5.80 | 25 | 7 | 6.67 | 6 | 81 |
| CW Region | 19 | 9 | 0.56 | 73 | 10 | 2.86 | 8 | 5 | 8.56 | 2 | 7 |
| CE Region | 18 | 7 | 0.10 | 154 | 40 | 5.82 | 19 | 12 | 6.10 | 1 | 67 |
| South Region | 32 | 16 | 0.73 | 174 | 95 | 6.02 | 21 | 19 | 2.68 | 8 | 44 |
| State Total | 127 | 50 | 0.68 | 599 | 243 | 5.64 | 87 | 48 | 5.27 | 18 | 206 |