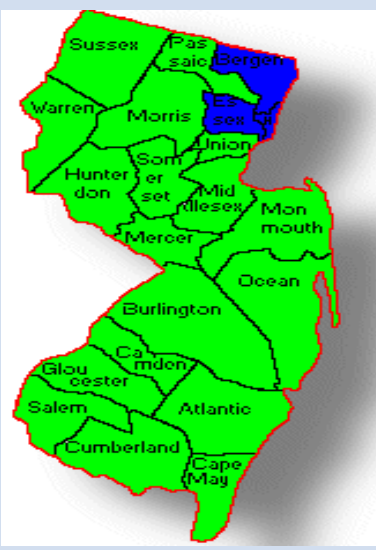


Synopsis

Influenza Activity Level ²	
State Activity Week Ending 10/15: MODERATE	
Current Week Last Year: MODERATE	
Regional³ Data	
Northwest	LOW
Northeast	MODERATE
Central West	LOW
Central East	LOW
South	LOW

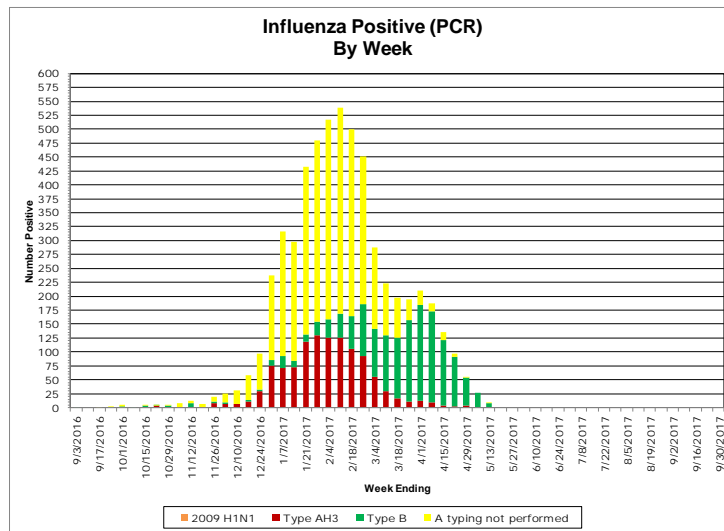


ILI Activity ⁴				
	Percent ILI/Absenteeism			Baselines
	Current Week (range by county)	Last week Current year	Current week Last year	Non-season ⁵ Season ⁶ (3 low, 3 high)
Long Term Care Facilities	0.28 (0.00, 1.32)	0.26	0.53	0.56 (0.52, 0.76)
Schools (Absenteeism)	3.95 (0.41, 5.56)	3.38	4.75	3.42 (4.49, 4.81)
Emergency Departments	2.72 (0.00, 3.81)	2.45	3.12	2.35 (3.17, 3.81)

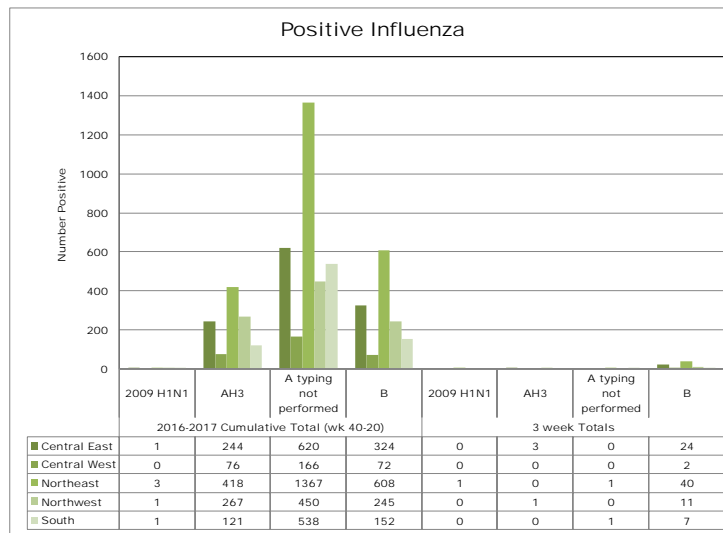
Viral Activity ⁷			
	Current Week	Past 3 Weeks	Cumulative Total
Influenza H1N1 (2009)	0	1	6
Influenza H3N2	1	4	1126
Influenza B	7	84	1399
Respiratory Syncytial Virus (RSV)	8	42	3455
Rapid Influenza Tests	56	368	12628

Virologic Surveillance⁷

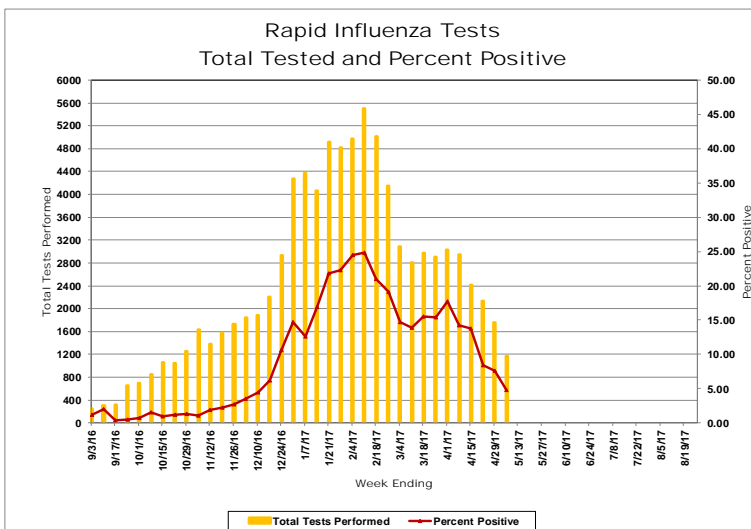
Influenza Positive Specimens (PCR) – Result by Week



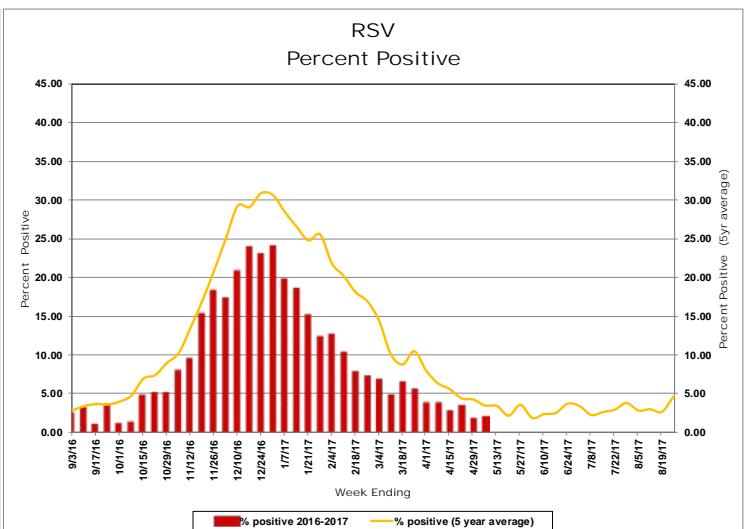
Influenza Positive Specimens (PCR) – Result by Region³



Influenza Rapid Antigen Result by Week



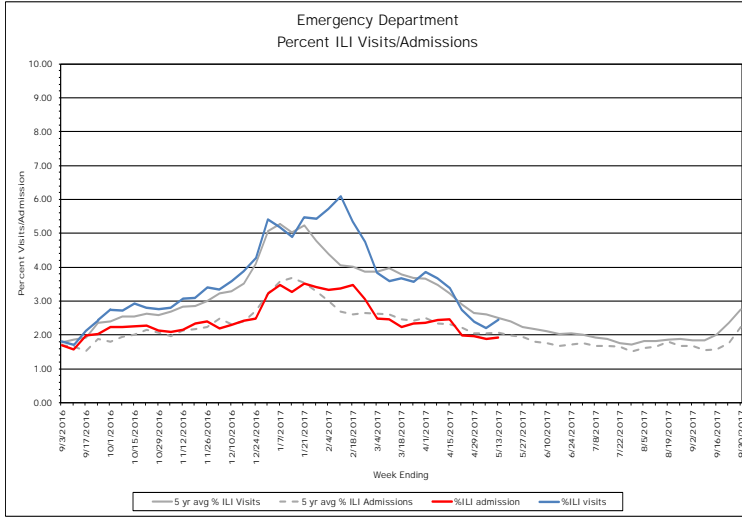
Respiratory Syncytial Virus (RSV) Result by Week



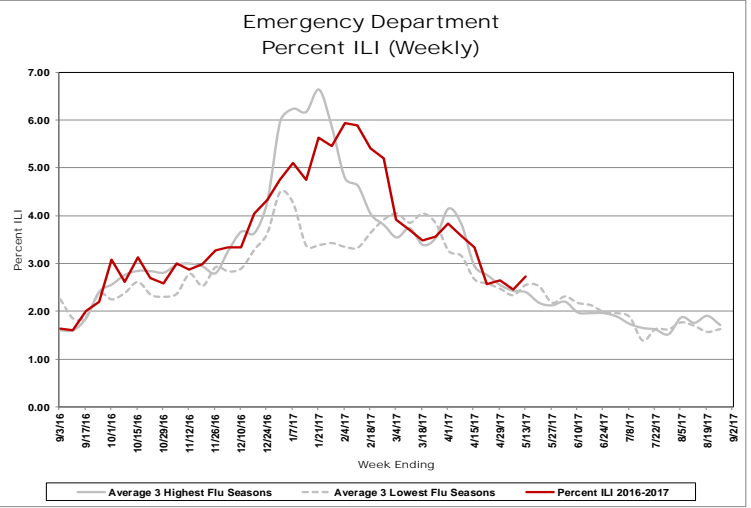
Influenza-Like Illness Surveillance

Emergency Department⁸

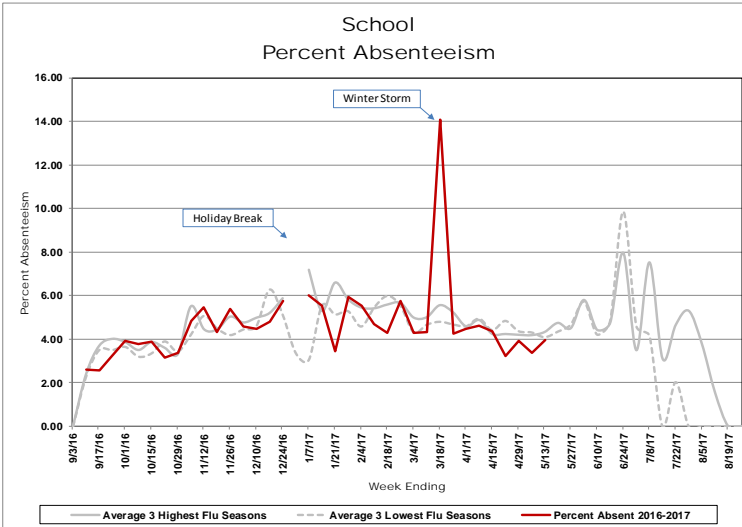
Daily Visits and Admission



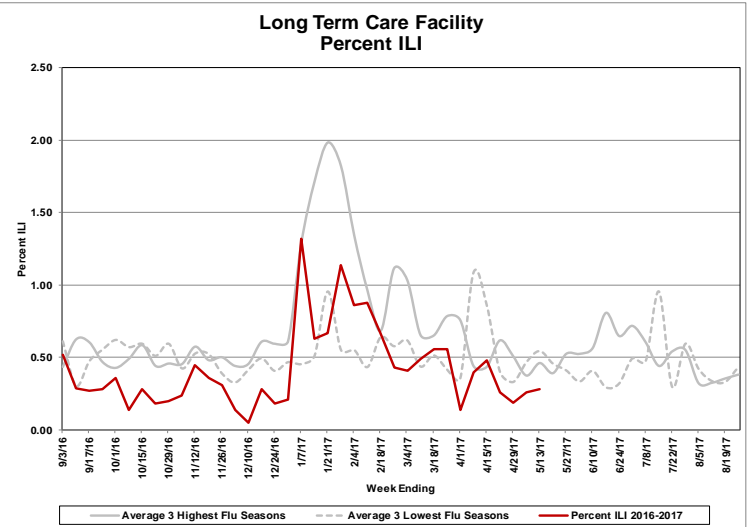
Visits – Tuesday Only



School Absenteeism



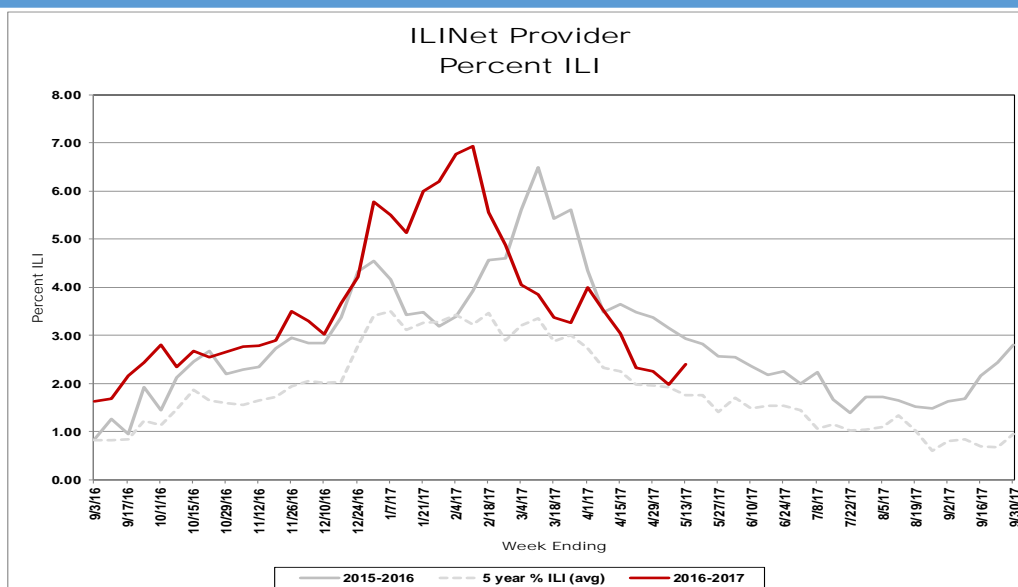
Long Term Care Facilities



Respiratory Outbreaks in Long Term Care Facilities⁹

Cumulative Outbreaks 2016-2017 season	95
No. outbreaks last 3 weeks	0
Regions with recent outbreaks	N/A

ILINet Providers



ILINet Providers			
Current Week		Previous Week	
# of reporters	% ILI	# of reporters	% ILI
25	2.40	29	1.98

Pediatric Influenza Mortality ¹⁰		
Number of Pediatric Influenza Deaths Reported to CDC		
Influenza Season	New Jersey	US (includes NJ)
2010 – 2011	4	123
2011 – 2012	1	35
2012 – 2013	7	171
2013 – 2014	6	108
2014 – 2015	1	146
2015 – 2016	1	85
2016 – 2017	0	91

For additional information regarding influenza surveillance
please visit the following websites.

<http://nj.gov/health/flu/surveillance.shtml>

<http://www.cdc.gov/flu/>

Footnotes:

1. This report represents activity occurring in New Jersey related to influenza and RSV. In addition, reports of other circulating respiratory viruses or regarding illness severity (i.e., hospitalization) will be included when available.
2. Activity levels for the state and region are defined in Table 1 and 2 at the end of this document.
3. The following is a breakdown of counties contained within each public health region: Northwest: Morris, Passaic, Sussex, Warren; Northeast: Bergen, Essex, Hudson; Central west: Hunterdon, Mercer, Somerset; Central East: Middlesex, Monmouth, Ocean, Union; South: Atlantic, Burlington, Camden, Cape May, Salem, Cumberland, Gloucester
4. Influenza-like illness (ILI) is defined as fever ($> 100^{\circ}\text{F}$ [37.8°C], oral or equivalent) and cough and/or sore throat (in the absence of a known cause other than influenza). For long term care facilities, fever is defined as 2°F above baseline temperature.
5. Non-season baseline is calculated by taking the average of statewide percentages of ILI for a 11 year (2006, 2007, 2008, 2009, 2010, 2011, 2012, 2013, 2014, 2015 and 2016) period during months when influenza is less likely to be circulating (May-August).
6. Three year seasonal averages are determined by calculating the average percent ILI/absenteeism for each influenza season (October to May). These averages are ranked and the three highest and lowest overall season averages were selected. The three highest and lowest numbers were then averaged to obtain a single high and single low value. The season which contribute to the high and low value vary by entity type and are as follows : LTCF (High: 10-11, 12-13, 14-15; Low: 11-12, 13-14, 15-16), ED (High: 12-13, 13-14, 14-15; Low: 10-11, 11-12, 15-16) and schools (High: 10-11, 12-13, 15-16; Low: 11-12, 13-14, 14-15). A week by week average was also calculated using the average of the seasons listed above for each entity type.
7. Viral activity: Real-time polymerase chain reaction (PCR) results are obtained from electronic laboratory transmission submitted by acute care, commercial and public health laboratories to CDRSS. Rapid influenza test data and respiratory syncytial virus data are acquired from facilities reporting rapid influenza tests via the National Respiratory and Enteric Virus Surveillance System (NREVSS) or CDRSS ILI module. Counts for cumulative totals begin with week ending October 8, 2016. Three week count data includes current week and two prior weeks. Data presented for RSV and rapid influenza testing represent information for the week prior to the current report week.
8. Daily visits and admissions associated with ILI from emergency department data is collected via EpiCenter and Hippocrates. Prior to these systems, data on ILI visits were only recorded one day per week usually on Tuesday. This system is maintained as a large amount of historical data allows for better seasonal comparisons.
9. Only LTCF outbreaks reported to NJDOH that receive an outbreak number are recorded in this report.
10. Data presented for New Jersey are for cases confirmed as of the current reporting week. Data presented for the United States represent data reported for the prior MMWR week. This data can be viewed at: <http://www.cdc.gov/flu/weekly/>.

Table 1
Influenza Activity Level – Definitions for State Activity

NJ Level	CSTE Level	Definition		
		ILI Activity/Outbreaks		Lab Activity
Low	No Activity	ILI activity at or below baseline AND no detected outbreaks	AND	No lab confirmed cases
	Sporadic	Low ILI activity detected OR one lab confirmed outbreaks anywhere in the state	AND	Sporadic isolation of laboratory confirmed influenza
Moderate	Local	Increase in ILI activity OR two or more lab confirmed outbreaks in one public health region (Other regions not experiencing increased ILI activity)	AND	Recent (within 3 weeks) laboratory activity in the region with increased ILI
	Regional	Increase in ILI activity OR two or more lab confirmed outbreaks in at least 2 public health regions (Other regions not experiencing increased ILI activity)	AND	Recent (within 3 weeks) laboratory activity in the region with increased ILI
High	Widespread	Increase in ILI activity OR two or more lab confirmed outbreaks in > 2 public health regions	AND	Recent (within 3 weeks) laboratory activity in the region with increased ILI

Table 2
Influenza Activity Level – Definitions for Public Health Regions

NJ Level	Definition		
	ILI Activity/Outbreaks		Lab Activity
Low	Low ILI activity detected OR one lab confirmed outbreaks anywhere in the region	AND	Sporadic isolation of laboratory confirmed influenza anywhere in the region
Moderate	Increased ILI activity in less than half of the counties in the region OR two lab confirmed outbreaks in the public health region	AND	Recent (within 3 weeks) laboratory activity in same counties of the region with increased ILI
High	Increased ILI activity in more than half of the counties in the region OR three or more lab confirmed outbreaks in the region	AND	Recent (within 3 weeks) laboratory activity in more than half of the counties in the region with increased ILI

Notes:

ILI activity: Systems used to detect increases in ILI activity include: ILINet (i.e., sentinel providers), school absenteeism data, ED ILI visits and admissions collected via Hippocrates and EpiCenter systems, LTCF ILI data, LTCF outbreak data, and information on influenza mortality (122 city, influenza associated death report).

Lab Activity: Virologic surveillance data from PHEL and commercial laboratories will be used as the primary data source for the above levels. However, rapid influenza test data will also be considered when determining the appropriate activity levels.

INFLUENZA LABORATORY REPORTS BY COUNTY

**Counts represent total positive specimens
from week ending October 7, 2016 to current MMWR week**

Source: CDRSS

Frequency	COUNTY(COUNTY)	RESULT				Total
		Influenza A - Typing not performed	Influenza A 2009 H1N1	Influenza AH3	Influenza B	
	ATLANTIC	594	0	38	195	827
	BERGEN	1480	1	263	562	2306
	BURLINGTON	370	0	9	116	495
	CAMDEN	836	1	37	171	1045
	CAPE MAY	24	0	1	19	44
	CUMBERLAND	16	0	4	4	24
	ESSEX	426	2	75	188	691
	GLOUCESTER	220	0	48	45	313
	HUDSON	639	0	83	238	960
	HUNTERDON	147	0	35	60	242
	MERCER	266	0	25	75	366
	MIDDLESEX	347	0	60	153	560
	MONMOUTH	889	0	27	289	1205
	MORRIS	480	0	95	181	756
	OCEAN	658	0	15	164	837
	PASSAIC	794	0	81	231	1106
	SALEM	6	0	1	2	9
	SOMERSET	84	0	36	38	158
	SUSSEX	74	0	24	35	133
	UNION	521	1	143	236	901
	WARREN	124	1	67	40	232
	Total	8995	6	1167	3042	13210

INFLUENZA LABORATORY REPORTS BY REGION

**Counts represent total positive specimens
from week ending October 7, 2016 to current MMWR week**

Source: CDRSS

Frequency	Table of REGION by RESULT					
REGION	RESULT					Total
	Influenza A - Typing not performed	Influenza A 2009 H1N1	Influenza AH3	Influenza B		
Central East	2415	1	245	842		3503
Central West	497	0	96	173		766
Northeast	2545	3	421	988		3957
Northwest	1472	1	267	487		2227
South	2066	1	138	552		2757
Total	8995	6	1167	3042		13210

***The following is a breakdown of counties contained within each public health region:
Northwest: Morris, Passaic, Sussex, Warren; Northeast: Bergen, Essex, Hudson
Central west: Hunterdon, Mercer, Somerset
Central East: Middlesex, Monmouth, Ocean, Union
South: Atlantic, Burlington, Camden, Cape May, Salem, Cumberland, Gloucester***

SURVEILLANCE DATE: 05/09/2017



COUNTY	Long Term Care			Schools			Hospital Emergency Dept		
	# Enrolled	# Reports Rec'd	% ILI	# Enrolled	# Reports Rec'd	% Absent	# Enrolled	# Reports Rec'd	% ILI
May 9, 2017 MMWR WEEK 19									
ATLANTIC	6	0	0.00	43	23	6.09	4	4	1.51
BERGEN	10	4	0.00	37	13	3.70	6	6	2.38
BURLINGTON	8	3	0.00	96	51	4.44	4	4	2.19
CAMDEN	1	0	0.00	1	0	0.00	7	7	3.79
CAPE MAY	3	1	0.00	14	6	3.62	1	1	2.48
CUMBERLAND	5	4	1.32	12	8	5.29	3	3	2.57
ESSEX	7	2	0.00	4	1	5.56	8	7	3.56
GLOUCESTER	3	0	0.00	4	1	3.13	2	2	2.20
HUDSON	4	2	0.00	14	8	3.74	6	6	3.81
HUNTERDON	4	3	0.82	8	7	2.45	1	1	1.09
MERCER	3	1	0.00	22	14	3.42	5	4	3.09
MIDDLESEX	11	6	0.00	22	17	3.50	6	6	1.99
MONMOUTH	6	2	0.00	16	5	3.71	5	5	2.88
MORRIS	2	0	0.00	9	2	0.41	4	4	1.42
OCEAN	8	1	0.00	5	3	2.96	4	4	2.43
PASSAIC	10	1	0.00	29	9	3.45	3	3	2.16
SALEM	0	0	0.00	3	2	3.40	1	1	1.47
SOMERSET	4	0	0.00	23	12	3.47	1	1	3.40
SUSSEX	3	1	0.00	5	2	4.88	2	2	0.00
UNION	1	0	0.00	51	13	2.59	5	5	3.17
WARREN	5	3	0.00	20	9	3.89	2	2	1.48
NW Region	20	5	0.00	63	22	2.78	11	11	1.67
NE Region	21	8	0.00	55	22	3.74	20	19	3.27
CW Region	11	4	0.63	53	33	3.24	7	6	2.91
CE Region	26	9	0.00	94	38	3.27	20	20	2.56
South Region	26	8	1.02	173	91	4.86	22	22	2.74
State Total	104	34	0.28	438	206	3.95	80	78	2.72

SURVEILLANCE DATE: 05/09/2017



County	RSV Tests		Rapid Flu Tests	
	# Positive	Total Tests Performed	# Positive	Total Tests Performed
May 9, 2017 MMWR WEEK 19				
ATLANTIC	0	8	3	69
BERGEN	0	1	8	97
BURLINGTON	1	7	0	0
CAMDEN	0	2	1	87
CAPE MAY	0	0	0	3
CUMBERLAND	0	0	0	19
ESSEX	1	100	9	251
GLOUCESTER	0	2	0	57
HUDSON	0	1	2	25
HUNTERDON	0	8	1	39
MERCER	0	6	6	65
MIDDLESEX	0	7	0	38
MONMOUTH	3	66	8	171
MORRIS	0	110	1	44
OCEAN	0	2	1	42
PASSAIC	0	19	16	130
SALEM	0	0	0	0
SOMERSET	0	0	0	0
SUSSEX	0	38	0	38
UNION	3	58	0	1
WARREN	0	0	0	0
NW Region	0	167	17	212
NE Region	1	102	19	373
CW Region	0	14	7	104
CE Region	6	133	9	252
South Region	1	19	4	235
State Total	8	435	56	1176