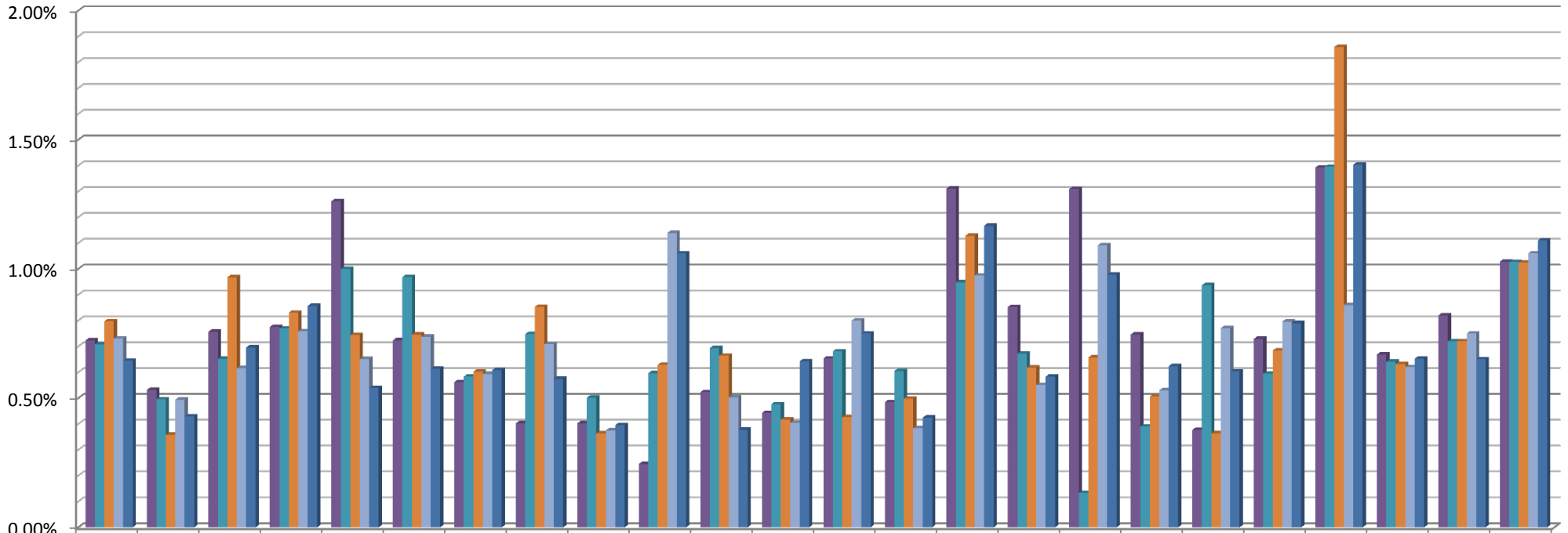


**NJEIS Percent of EI Population Compared to Census Population of
Children 0<1 (Ind #5)
Dec 1 2013 Federal Child Count**



	ATL	BERG	BURL	CAMD	CMAY	CUMB	ESX	GLO	HUD	HUNT	MER	MDSX	MONM	MOR	OC	PAS	SAL	SOM	SUSX	UN	WAR	Grand Total	2012 Target%	National %
■ 2009	0.72%	0.53%	0.76%	0.78%	1.26%	0.72%	0.56%	0.40%	0.40%	0.25%	0.52%	0.44%	0.65%	0.48%	1.31%	0.85%	1.31%	0.75%	0.38%	0.73%	1.39%	0.67%	0.82%	1.03%
■ 2010	0.71%	0.50%	0.65%	0.77%	1.00%	0.97%	0.58%	0.75%	0.50%	0.60%	0.69%	0.48%	0.68%	0.60%	0.95%	0.67%	0.13%	0.39%	0.94%	0.59%	1.40%	0.64%	0.72%	1.03%
■ 2011	0.80%	0.36%	0.97%	0.83%	0.74%	0.75%	0.60%	0.85%	0.36%	0.63%	0.66%	0.42%	0.43%	0.50%	1.13%	0.62%	0.66%	0.51%	0.36%	0.68%	1.86%	0.63%	0.72%	1.02%
■ 2012	0.73%	0.49%	0.62%	0.76%	0.65%	0.74%	0.59%	0.71%	0.38%	1.14%	0.50%	0.40%	0.80%	0.38%	0.97%	0.55%	1.09%	0.53%	0.77%	0.80%	0.86%	0.62%	0.75%	1.06%
■ 2013	0.64%	0.43%	0.70%	0.86%	0.54%	0.61%	0.61%	0.57%	0.40%	1.06%	0.38%	0.64%	0.75%	0.42%	1.17%	0.58%	0.98%	0.62%	0.60%	0.79%	1.40%	0.65%	0.65%	1.11%