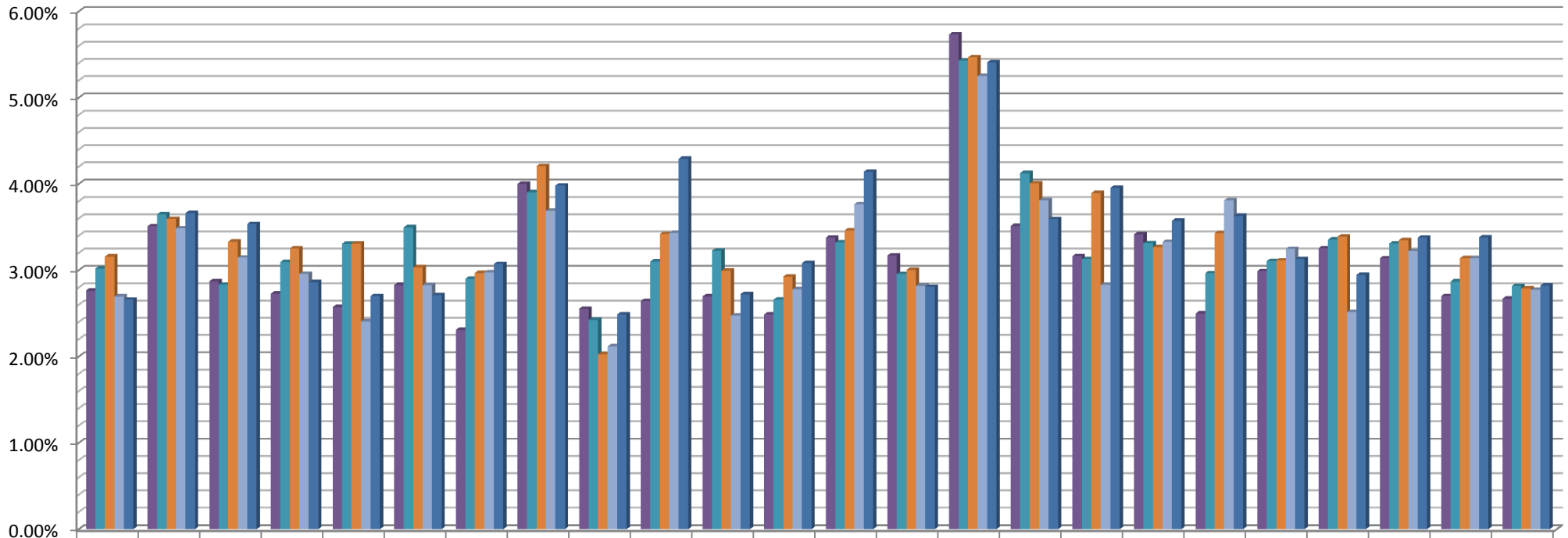


**NJEIS Percent of EI Population Compared to Census Population of
Children 0<3 (Ind #6)
Dec 1 2013 Federal Child Count**



	ATL	BERG	BURL	CAMD	CMAY	CUMB	ESX	GLO	HUD	HUNT	MER	MDSX	MONM	MOR	OC	PAS	SAL	SOM	SUSX	UN	WAR	Grand Total	2012 Target%	National %
■ 2009	2.76%	3.51%	2.87%	2.73%	2.57%	2.83%	2.31%	4.00%	2.55%	2.64%	2.70%	2.49%	3.38%	3.17%	5.73%	3.51%	3.16%	3.42%	2.50%	2.99%	3.25%	3.14%	2.70%	2.67%
■ 2010	3.02%	3.65%	2.83%	3.09%	3.31%	3.50%	2.90%	3.90%	2.42%	3.10%	3.23%	2.66%	3.32%	2.96%	5.43%	4.13%	3.13%	3.31%	2.96%	3.11%	3.36%	3.31%	2.87%	2.82%
■ 2011	3.16%	3.59%	3.33%	3.25%	3.31%	3.03%	2.97%	4.21%	2.03%	3.42%	2.99%	2.93%	3.46%	3.00%	5.47%	4.01%	3.89%	3.27%	3.43%	3.11%	3.39%	3.35%	3.14%	2.79%
■ 2012	2.70%	3.49%	3.15%	2.96%	2.41%	2.83%	2.98%	3.69%	2.12%	3.43%	2.47%	2.78%	3.76%	2.82%	5.25%	3.81%	2.83%	3.33%	3.81%	3.25%	2.52%	3.22%	3.14%	2.77%
■ 2013	2.66%	3.66%	3.54%	2.86%	2.70%	2.71%	3.07%	3.98%	2.49%	4.29%	2.72%	3.08%	4.14%	2.81%	5.41%	3.59%	3.95%	3.57%	3.63%	3.13%	2.94%	3.38%	3.38%	2.82%