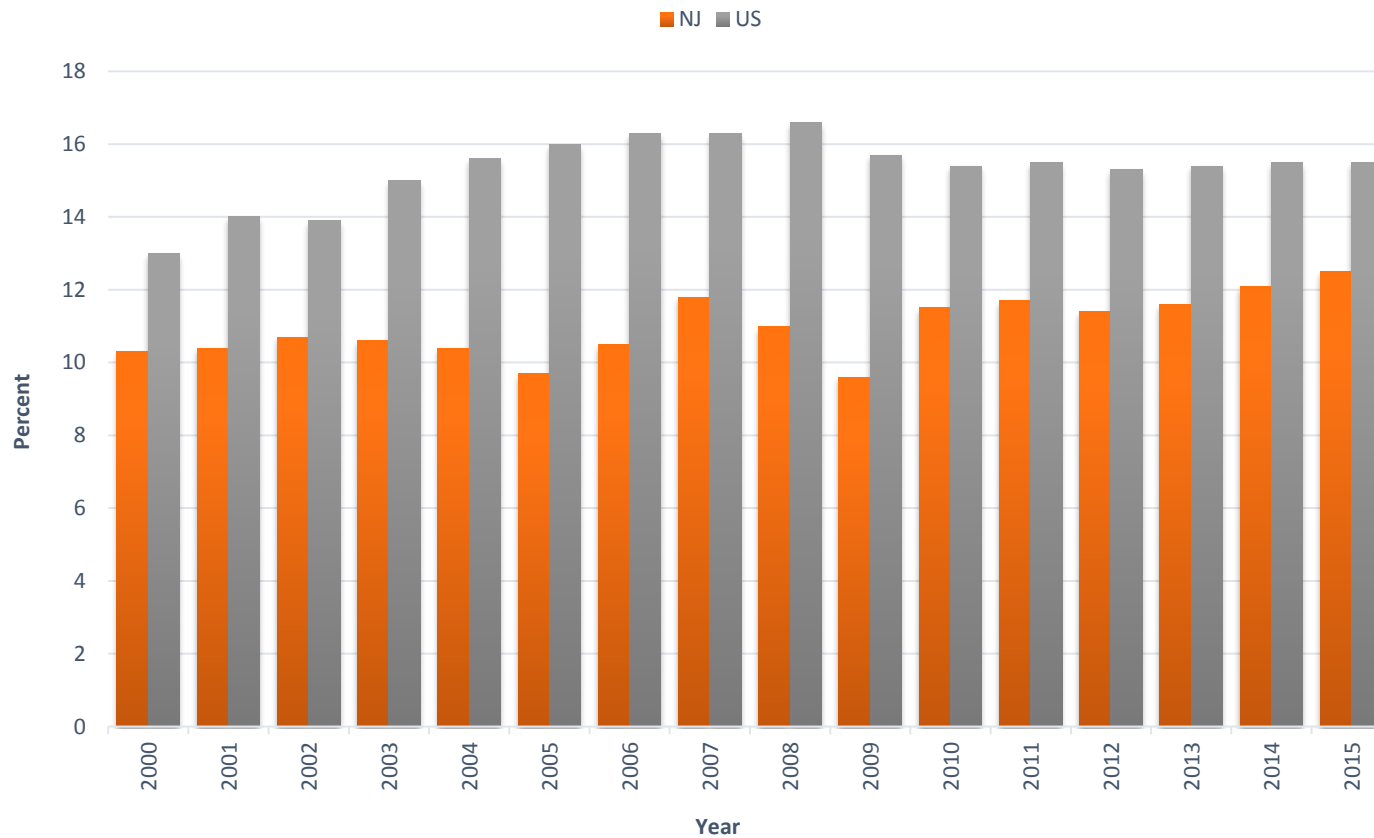


OHI #16: Percentage of Workers Employed in Industries and Occupations at High Risk for Occupational Mortality

Percentage of Workers Employed in Industries at High Risk for Occupational Mortality, New Jersey and United States, 2000-2015



Average Number and Percentage of
Workers Employed in Occupations at High
Risk for Occupational Mortality, New
Jersey and United States, 2000-2015

Year	Number		Percent	
	NJ	US	NJ	US
2000	416,753	18,117,819	10.3	13
2001	418,415	18,021,007	10.4	14.0
2002	426,128	17,891,796	10.7	13.9
2003	442,815	17,922,675	10.6	15.0
2004	437,963	18,724,429	10.4	15.6
2005	452,151	19,391,501	9.7	16.0
2006	360,617	20,224,242	10.5	16.3
2007	508,736	20,390,465	11.8	16.3
2008	469,727	20,643,751	11	16.6
2009	399,865	18,645,204	9.6	15.7
2010	403,012	18,124,738	11.5	15.4
2011	415,702	18,426,657	11.7	15.5
2012	407,068	18,713,621	11.4	15.3
2013	417,224	19,070,007	11.6	15.4
2014	442,819	19,579,754	12.1	15.5
2015	459,433	19,880,868	12.5	15.5

Data Source: US Bureau of Labor Statistics, Current Population Survey, Employed Labor Force (ELF) Query System
[<https://wwwn.cdc.gov/wisards/cps/>]