

Social Service Block Grant (SSBG)

Mental Health and Addictions Providers

Quarterly Meeting

December 12, 2013

Renee Burawski

Director of the Office for Sandy Recovery



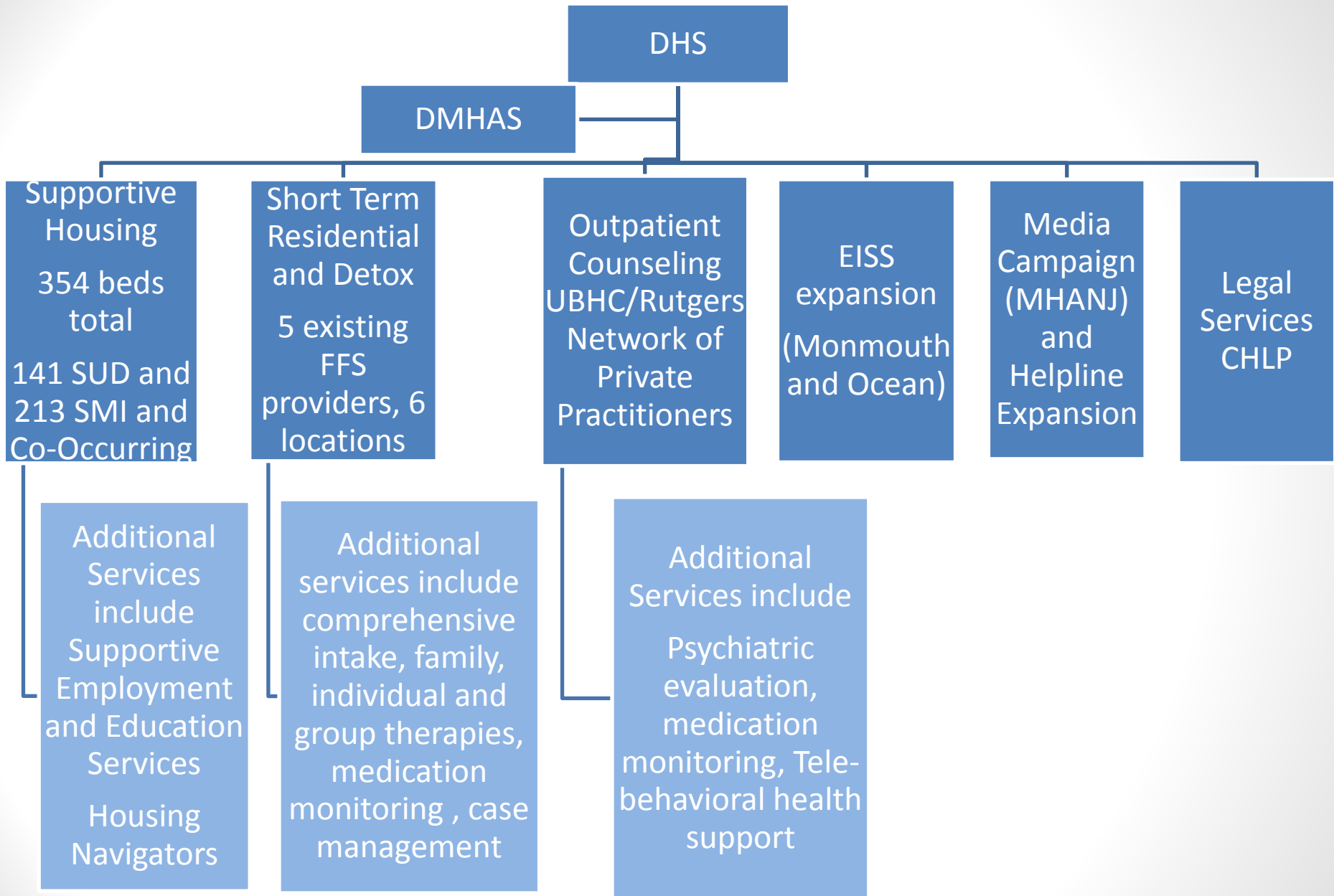
**Division of Mental Health
and Addiction Services**

Social Service Block Grant (SSBG)

- Funds available to states with a Presidential disaster declaration due to Sandy
- NJ received a total allocation of \$226,794,105
- Mental Health and Addiction Services portion is \$49,384,000
- Funding ends September 30, 2015

Who is Eligible?

- 18 years of age or older
- US citizen or legal resident
- No health insurance benefit, either private or public
- Lived in one of the following 10 counties between 10/28/12 and 10/30/12:
 - Atlantic, Bergen, Cape May, Cumberland, Essex
Hudson, Middlesex, Monmouth, Ocean, Union



Detox and Short Term Residential

- Started on November 11, 2013
- To eligible for services in addition to criteria previously outlined, consumers must also meet American Society of Addiction Medicine Patient Placement Criteria
- Using existing Fee-for-Service Providers, who are licensed by the Office of Licensure
- 5 providers in 6 locations:
 - **Maryville** - 1903 Grant Avenue, Williamstown, Gloucester County
 - **Turning Point** - 680 Broadway, Paterson, Passaic County
 - **Sunrise House** - 47 Main Street, Franklin, Sussex County
 - **New Hope Foundation** - 80 Conover Road, Marlboro, Monmouth County
 - **Straight and Narrow (2 locations)** -
 - **Alpha House AND Dismas House** 396 Straight Street, Paterson, Passaic County

Public Education Campaign and Helpline Expansion

- Public education campaign to help connect people to needed treatment, PSAs, bus posters, newspaper ads, web banners, etc.
- Expansion of NJ Mental Health Cares Helpline hours, offering a point of entry to SSBG funded services/programs
 - 8 am to 12 am 7 days a week (started November 20, 2013)



WE CAN HELP YOU DEAL WITH SANDY STRESS.

Call us: 866-202-HELP
TTY: 877-294-4356

If you or a family member is still struggling with stress after the storm, we can help you with the emotional support you need. We can connect you to guidance, counseling and substance abuse services that can help you get back on track.

New Jersey
MentalHealthCares



This message is brought to you by the Mental Health Association in New Jersey with Social Services Block Grant funding from the New Jersey Department of Human Services

njmentalhealthcares.org

Outpatient Counseling

- Rutgers-UBHC offering counseling through a panel of credentialed private practitioners
- Initial intake evaluation
- 10 sessions
- Tele-health services also available

Early Intervention Support Services (EISS)

- Contract expansions of 2 existing EISS programs started on December 1, 2013:
 - Monmouth County
 - Monmouth Medical Center - 300 additional consumers to be served
 - Ocean County
 - Ocean Mental Health - 350 additional consumers to be served

Supportive Housing Vouchers

- Total of 354 vouchers available, will be awarded via RFP process
 - 213 for consumers with mental health and co-occurring disorders
 - 141 for consumers with substance use disorders
- Key elements:
 - Supported employment and education will be provided
 - Housing navigators to assist in locating appropriate, safe, clean housing
 - Providers must work towards assisting consumers to work towards sustain housing after voucher expires

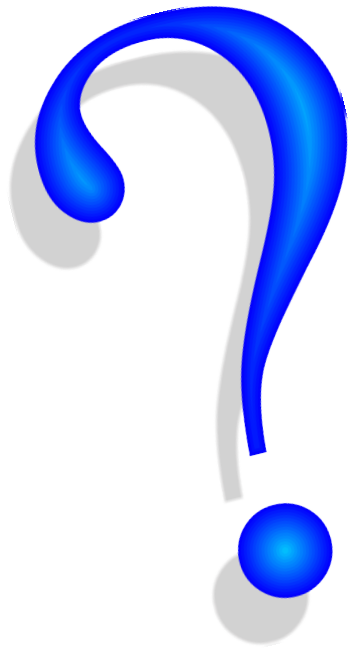
Legal Services

- Community Health Law Project (CHLP) will expand existing services by:
 - Serving an additional 225 individuals
 - Provide services throughout the state
 - Offsite, not just office-based, appointments to meet consumers' needs

How to Access Services

- 211 Information and Referral Hotline
- NJ Mental Health Cares Information and Referral Helpline
866-202-HELP (4357)

Questions



Renee Burawski, LCSW
Office of Sandy Recovery
Renee.Burawski@dhs.state.nj.us
Office 609-341-3599