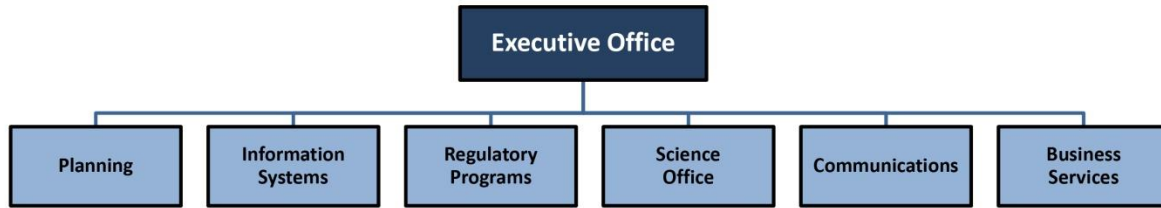




NEW JERSEY PINELANDS COMMISSION

ORGANIZATION CHART BY OFFICE

(Updated 3/2/2023)



Executive Office

Grogan, Susan R.	Executive Director
Cruz, Charleen	Human Resources Manager
Noble, Jessica	Executive Assistant
Roth, Stacey	Chief, Legal and Legislative Affairs

Regulatory Programs

Horner, Charles	Director of Regulatory Programs
Field, April	Chief Permit Administrator
Capella, Timothy	Environmental Specialist
Carter, Keith	Regulatory Programs Specialist
Carter, Ken	Sup. Environmental Specialist
Deman, Ernest	Sup. Environmental Specialist
Ellis, Branwen	Environmental Specialist
Holgerson, Dawn	Office Assistant
Seeber, Fredrick	Environmental Specialist
Szura, Brian	Environmental Specialist
Walker, Devin	Environmental Specialist
Ward, Rhonda	Environmental Specialist
Williams, Bethany	Environmental Specialist

Planning Office

Berg, Gina	Planning Specialist
Elliott, Katherine	Planning Specialist
Lanute, Brad	Planning Specialist
Maxwell, Trent	Technical Assistant
Paalvast, Marc	Cultural Resource Specialist
Simone, Steven	Planning Specialist
Wengrowski, Edward	Environmental Tech. Coordinator

Science Office

Bunnell, John	Chief Scientist
Laidig, Kim	Principal Research Scientist
Burritt, Patrick	Research Scientist
Dragon, Jeffrey	Research Scientist

Information Systems

Bossett, Evan	MIS Manager
DeLorenzo, Mark	GIS Specialist
Martin, Matthew	MIS Specialist I
Paoline, John	MIS Specialist 4
Pierce, Janet	Principal MIS Specialist

Communications

Leakan, Paul	Communications Officer
Mott, Joel	Principal Public Programs Specialist

Business Services

Lynch, Jessica	Business Services Manager
Ebersberger, Carol	Business Specialist
Keys, John	Maintenance Technician
Melodick, Theresa	Principal Clerical Assistant
Spires, Patricia	Principal Business Assistant