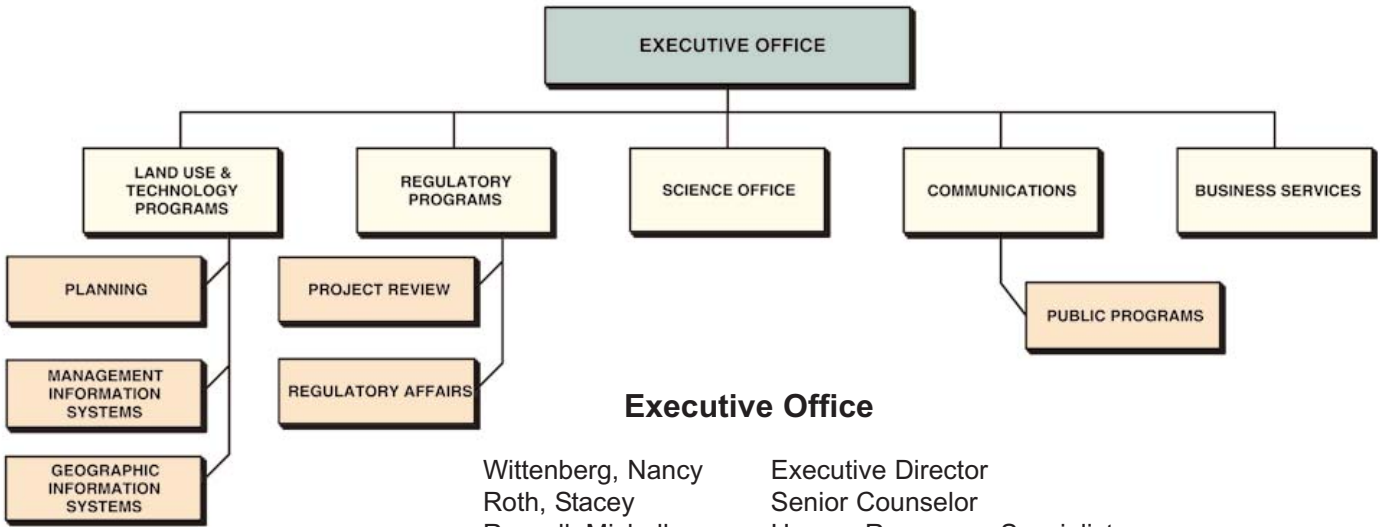




# NEW JERSEY PINELANDS COMMISSION ORGANIZATION CHART BY OFFICE

(As of July 27, 2011)



## Executive Office

Wittenberg, Nancy	Executive Director
Roth, Stacey	Senior Counselor
Russell, Michelle	Human Resources Specialist
Noble, Jessica	Executive Assistant

## Land Use & Technology Programs

Liggett, Larry	Director of Land Use & Technology
Grogan, Susan	Chief Planner
Cook, Maureen	Principal MIS Technician
DeLorenzo Mark	GIS Specialist
LaMacchia, John	MIS Manager
Pierce, Janet	Principal MIS Specialist
Piner, Elizabeth	Principal Planning Assistant
Tietze, Deborah	GIS Specialist
Tyshchenko, Paul	Resource Planner
Wengrowski, Edward	Environmental Technologies Coordinator
Wilson, Rob	MIS Specialist
Yaffe, Michael	Resource Planner
Brady, Barry	Cultural Resource Planner

## Regulatory Programs

Horner, Charles	Director of Regulatory Programs
Young, Karen	Chief Permit Administrator
Carter, Keith	Regulatory Programs Specialist
Carter, Ken	Supervising Environmental Specialist
Demam, Ernest	Supervising Environmental Specialist
Ellis, Branwen	Environmental Specialist
Fijalkowski, April	Environmental Specialist
Gower, Kathryn	Principal Applicant Services Representative
Graham, Donna	Supervising Regulatory Programs Specialist
Jeney, Robyn	Regulatory Programs Specialist
Montgomerie, Jean	Environmental Specialist
Repa, John	Representative
Seeber, Fredrick	Project Support Assistant
Szura, Brian	Environmental Specialist
Ward, Rhonda	Environmental Specialist

## Business Services

Connor, Donna	Business Manager
Keys, John	Maintenance Technician
Luker, Ronnie	Maintenance Custodian
Melodick, Theresa	Principal Clerical Assistant
Rago, Dawn	Business Specialist
Spires, Patricia	Principal Business Assistant
Wood, Melody	Principal Clerical Assistant

## Science Office

Bunnell, John	Chief Scientist
Laidig, Kim	Principal Research Scientist
Procopio, Nicholas	Research Scientist
Burritt, Patrick	Research Technician

## Communications

Leakan, Paul	Communications Officer
Mott, Joel	Public Programs Specialist