

KENNETH J. LUCIANIN
Commissioner



MICHAEL DeFRANCISCI
Executive Director

GREGORY A. TRAMONTOZZI
General Counsel
Acting Clerk

600 Wilson Avenue
Newark, New Jersey 07105
P (973) 344-1800
www.nj.gov/pvsc

"Protecting Public Health and the Environment"

For Immediate Release:
April 21, 2014

Contact Information:

Hollie A. Gilroy
hgilroy@pvsc.nj.gov
Office: 973-817-5735

CONSTRUCTION ADVISORY

PVSC's Main Interceptor Sewer to be Rehabilitated in Parts of the City of Clifton Construction Work Activities on Scribner Place, Hamilton Avenue, Cutler Street, and Hope Avenue within the City of Clifton

(Newark) – The Passaic Valley Sewerage Commission (PVSC) has announced it will be commencing rehabilitation work on its Main Interceptor Sewer within the City of Clifton.

Construction activities are planned to occur in multiple construction phases within the following construction site locations as follows.

1. Scribner Place and Hamilton Avenue within the City of Clifton.
 - Main Interceptor, Clifton, New Jersey – (MH MI-145 to MI-143)
 - 1,610 linear feet of 6'-9" diameter circular concrete pipe from Manhole No. MI-145 (Station No. 729+54.89) to Station No. 713+45

Construction activities are planned on Scribner Place between Mahar Avenue and Clifton Avenue within the City of Clifton. Scribner Place between Mahar Avenue and Clifton Avenue within the City of Clifton will be closed (no thru traffic) and detoured while repairs to the PVSC Main Interceptor Sewer occur until further notice.
2. Cutler Street within the City of Clifton.
 - Main Interceptor, Clifton, New Jersey – (MH MI-142)
 - 620 linear feet of 6'-9" diameter circular concrete pipe from Station No. 707+25 to Station No. 713+45 with cured-in-place liner.

Construction activities are planned on Cutler Street (private property) in the vicinity of Ackerman Avenue within the City of Clifton. It is anticipated that Cutler Street will be opened for local traffic only (no thru traffic) while repairs to the PVSC Main Interceptor Sewer occur until further notice. Parking on Cutler Street will be restricted. No Parking Signs will be coordinated with the City of Clifton Police Department and posted by the Contractor.
3. Cutler Street and Hope Avenue within the City of Clifton.
 - Main Interceptor, Paterson, New Jersey – (MH MI-142 to MI-141)

KENNETH J. LUCIANIN
Commissioner



MICHAEL DeFRANCISCI
Executive Director

GREGORY A. TRAMONTOZZI
General Counsel
Acting Clerk

600 Wilson Avenue
Newark, New Jersey 07105
P (973) 344-1800
www.nj.gov/pvsc

“Protecting Public Health and the Environment”

o 977 linear feet of 6'-9" diameter circular concrete pipe from Station No. 707+25 to Manhole No. MI-141 (Station No. 697+48.09) with slip-lining.

Construction activities are planned on Cutler Street (private property) in the vicinity of Ackerman Avenue within the City of Clifton. It is anticipated that Cutler Street will be opened for local traffic only (no thru traffic) while repairs to the PVSC Main Interceptor Sewer occur until further notice. Parking on Cutler Street will be restricted. No Parking Signs will be coordinated with the City of Clifton Police Department and posted by the Contractor.

The anticipated duration of the construction work activities is estimated to be approximately seven-months for the CIPP/Slip-Lining work and approximately several days for each manhole location based on the contractor’s preliminary construction schedule and resources. Motorists should expect some minor delays within and around the construction work zone and are encouraged to use alternate routes or to plan additional travel time.

Additional construction work activities to be performed and equipment to be provided for this project comprises of the following:

1. Televisé all pipes being repaired prior to and after the rehabilitation.
2. Clean all pipes to be repaired of the debris in them.
3. Provide temporary flow bypass system for all sewer repairs except manhole rehabilitation and slip-lining process.
4. Reconstruction of manhole cones (Enlarged Tops)
5. Installation of temporary CIPP liner discharge/suction pits to facilitate the temporary bypass piping.
6. Installation of temporary pushing pits (slip-lining) to facilitate installation of the composite fiber glass pipe.
7. Rehabilitation of manholes on the main interceptor sewers. Work includes repairing masonry, preparing and coating reinforcing bars, mortaring honeycombs and spalls, resurfacing and coating walls, and resetting frames. Work to include sealing of manholes against ground water infiltration.

Municipality	Manhole Numbers	Location of Work
City of Clifton	MI-149	Route 46 and Route 20 Fork
	MI-153	McLean Boulevard
	MI-154	1st Avenue
	MI-223	5th Street
	MI-235	River Street

8. Restore inlet and lateral sewer connections.
9. Maintain and protect traffic as required by the City of Clifton.

KENNETH J. LUCIANIN
Commissioner



MICHAEL DeFRANCISCI
Executive Director

GREGORY A. TRAMONTOZZI
General Counsel
Acting Clerk

600 Wilson Avenue
Newark, New Jersey 07105
P (973) 344-1800
www.nj.gov/pvsc

“Protecting Public Health and the Environment”

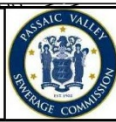
10. Restore any disturbed areas, including roadway pavements, gutters, curbs, sidewalks, driveways, fences, retaining walls, and landscaping. Remove any environmental protection measures employed.
11. Cleanup work areas.

Drawings and Specifications, and other Contract Documents may be examined at the following locations:

- The Main Office of the Engineer, Charles A. Manganaro Consulting Engineers, P.C., 7 West Cross Street, Hawthorne, New York, 10532-1244; or
- The Passaic Valley Sewerage Commission, 600 Wilson Avenue, Newark, New Jersey 07105 offices.

The \$17.9 million infrastructure project consists of rehabilitating 100-year-old sewer lines utilizing trenchless technologies (i.e. cured-in-place pipe and slip-lining). Designed to minimize traffic disturbances and disruptions, trenchless technologies still require smaller excavations and access pits in order to approach a smaller footprint. Also, because PVSC’s Main Interceptor Sewer was also constructed to flow by gravity, the rehabilitations and excavations are more challenging during construction.

As the project advances, PVSC will provide updates. The precise timing of the work is subject to change due to weather or other factors. Motorists are encouraged to check www.511nj.org for real-time travel information.



REHABILITATION OF THE MAIN INTERCEPTING SEWER AND VARIOUS MANHOLES
LOCATION PLAN NO. 3
MAIN INTERCEPTOR
CLIFTON

CHARLES A. MANGANARO
CONSULTING ENGINEERS
A PROFESSIONAL CORPORATION

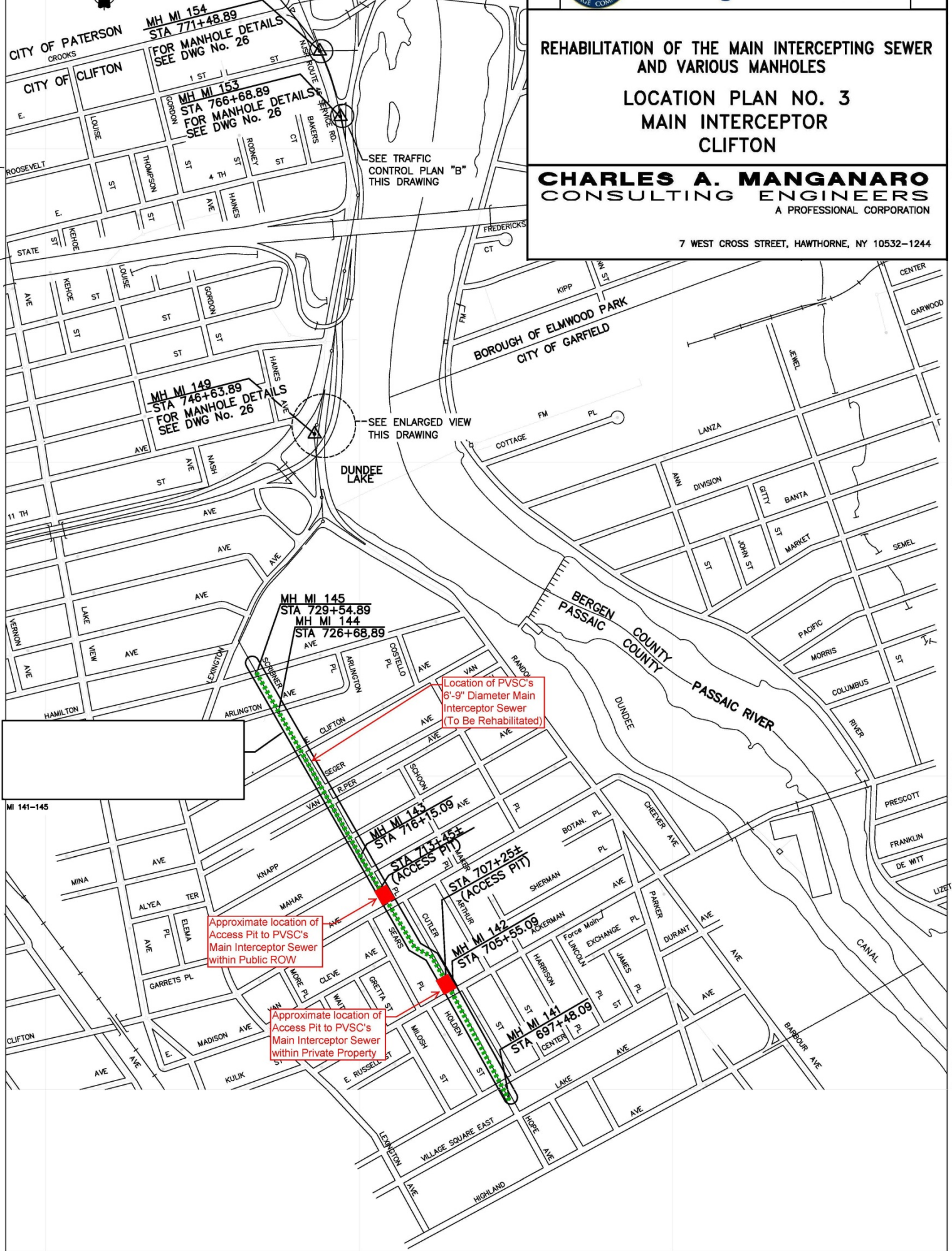
7 WEST CROSS STREET, HAWTHORNE, NY 10532-1244



SEE TRAFFIC CONTROL PLAN "A" THIS DRAWING

SEE TRAFFIC CONTROL PLAN "B" THIS DRAWING

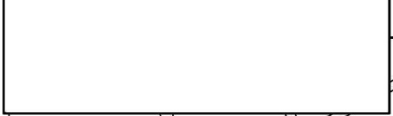
SEE ENLARGED VIEW THIS DRAWING



Location of PVSC's 6'-9" Diameter Main Interceptor Sewer (To Be Rehabilitated)

Approximate location of Access Pit to PVSC's Main Interceptor Sewer within Public ROW

Approximate location of Access Pit to PVSC's Main Interceptor Sewer within Private Property



MI 141-145