



Students mapping a *Leptoceratops* quarry in 2014 in northern Wyoming.



# BIGHORN BASIN DINOSAUR PROJECT



## Join Us For A Dinosaur Hunting Adventure!



Members of the **2014 Field Expedition** team in northern Wyoming.



205 West State Street, PO Box 530  
Trenton, NJ 08625  
Ph (609) 394-5310, Fax (609) 292-7636

[www.statemuseum.nj.gov](http://www.statemuseum.nj.gov)

Join the New Jersey State Museum's paleontologists on a real paleontological expedition to the fossil-rich rocks of Montana and Wyoming!

Experience the natural history of one of the most beautiful regions in the world.

## 2016 Field Expedition

Learn field paleontology by experiencing it! Join the New Jersey State Museum's paleontologists in the foothills of the Rocky Mountains in Montana and Wyoming. We'll collect Jurassic sauropods, Cretaceous aquatic and terrestrial animals (including dinosaurs!), and Devonian fishes in the Bighorn Basin.

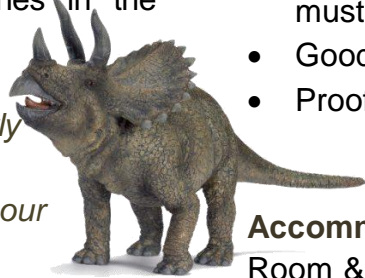
**Teachers:** Complete your yearly continuing education credits by participating. Contact us about our Teacher's Week!

**Students:** Receive undergraduate or graduate credit from the South Dakota School of Mines & Technology.

**General Public:** Anyone can participate in this experience. Do more on your next vacation – be a dinosaur hunter!

The expedition is a serious research project and is more than just a field trip. Your efforts will aid the NJSM's decades-long paleontology research efforts in the region.

The field course is led by David Parris, Curator of Natural History, and Jason Schein, Assistant Curator of Natural History, at the NJ State Museum.



### Dates:

- July 10 – 16, 2016
- July 17 – 23, 2016
- July 24 – July 30, 2016

### Requirements:

- Must be at least 12 yrs old (12 – 17 must be accompanied by an adult)
- Good physical condition
- Proof of health insurance

### Accommodations:

Room & board are provided by the YBRA field station in Red Lodge, Montana. YBRA is a comfortable facility with typical collegiate field camp cabins. Lodging is dormitory-style, with a men's and women's cabin.



### Fees:

- \$1,275 Friends Members
- \$1,350 Non-Friends Members
- \$1,500 Undergraduate Students
- \$1,550 Graduate Students
  - All fees are per week
  - Students seeking credit are required to attend for 2 weeks.
  - 15% deposit due upon registration.

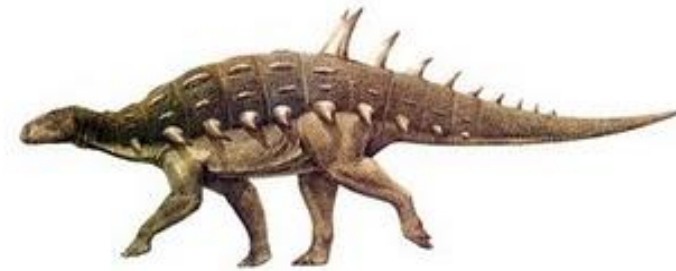
Balance due June 15, 2016.

Fees include registration, tuition, lodging & meals, collecting tools & equipment,

transportation to and from the Billings airport and base camp and to/from all field sites, and all instruction and educational materials.

NOTE: Fees *do not* include transportation to/from your home to Billings, Montana.

Only 20 spots available each week.  
Reserve yours today!



For more information or to request an application package, please contact:

**Jason P. Schein**  
[Jason.Schein@sos.nj.gov](mailto:Jason.Schein@sos.nj.gov)  
(609) 292-7660

Follow the adventures:

