

PIPE DIAMETER (INCHES)	STEEL GA.	ALUM. GA.	DIMENSIONS (INCHES)	
			L	C
12	16	16	21	36
15	16	16	26	44
18	16	16	31	52
21	16	16	36	60
24	16	16	41	68
30	14	14	51	84
36	14	12	60	100
42	12	12	69	116
48	12	12	78	126
54	12	12	84	138
60	12	12	87	150
66	12	12	87	156
72	12	12	87	162
78	12	12	87	168
84	12	12	87	174

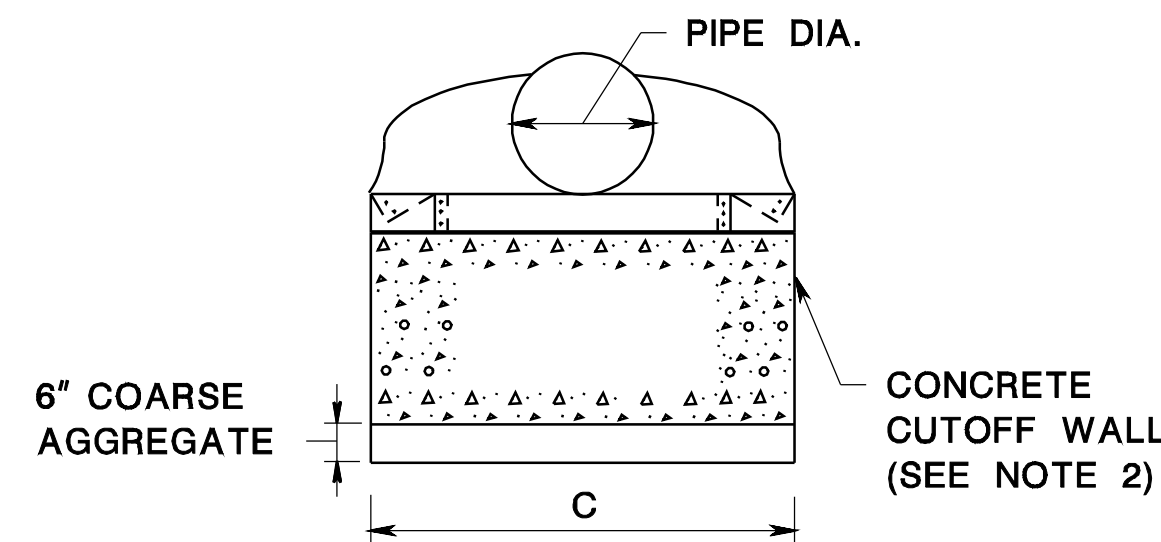
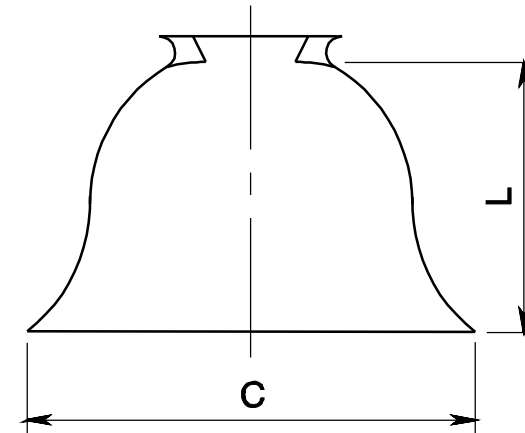
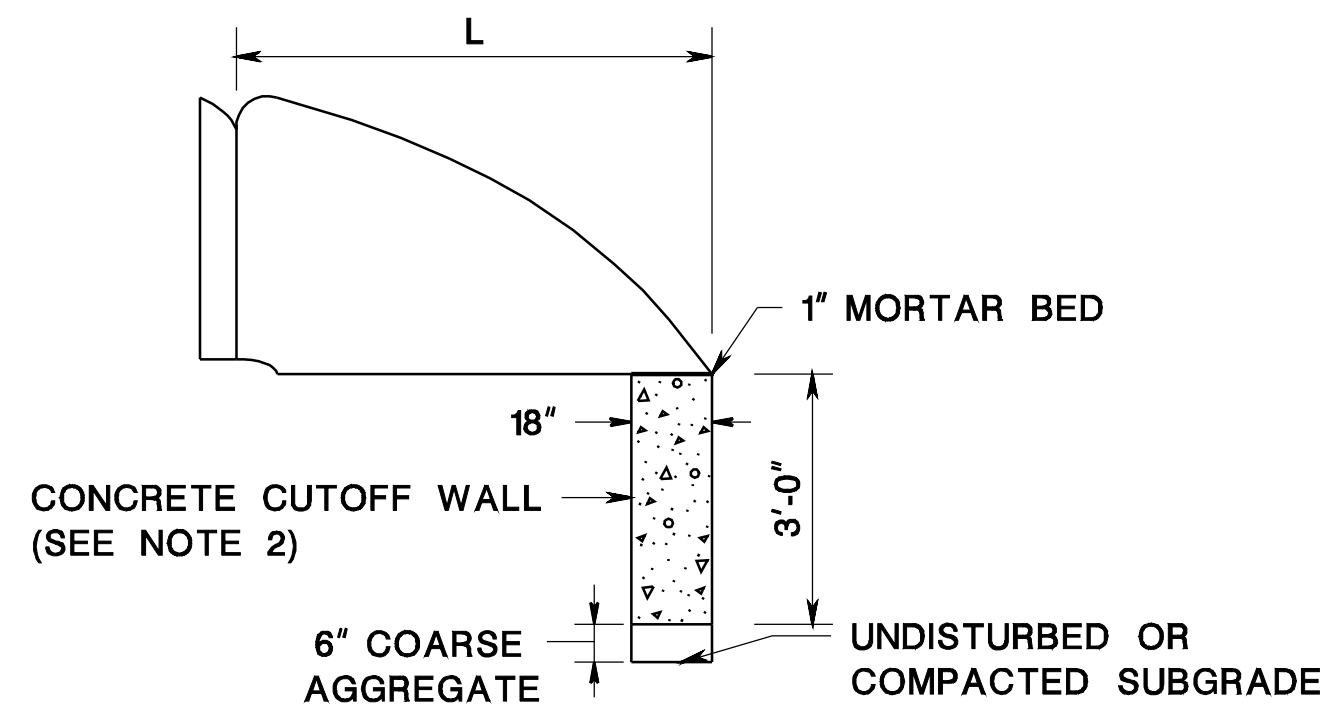
ROUND PIPE

ARCH PIPE DIMENSION (INCHES)		STEEL GA.	ALUM. GA.	DIMENSIONS (INCHES)	
SPAN	RISE			L	C
17	13	16	16	19	44
21	15	16	16	23	50
24	18	16	16	28	58
28	20	16	16	32	66
35	24	14	14	39	80
42	29	14	14	46	99
49	33	12	12	53	111
57	38	12	12	63	126
64	43	12	12	70	138
71	47	12	12	77	150
77	52	12	12	77	162
83	57	12	12	77	174

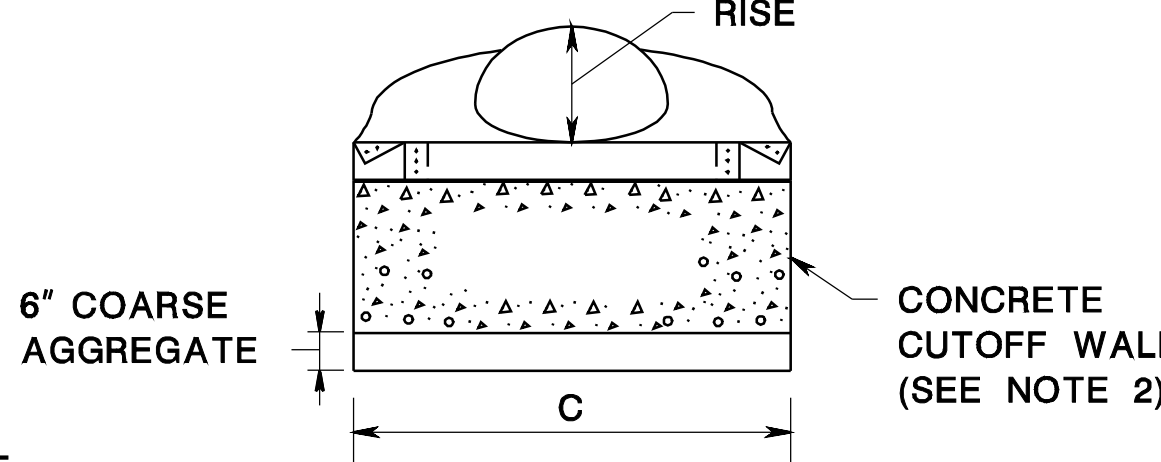
ARCH PIPE

NOTES:

- MINOR VARIATIONS TO THE ABOVE DIMENSIONS ARE ACCEPTABLE WITH THE EXCEPTION OF THE INSIDE DIAMETER DIMENSION.
- A 1 INCH THICK MORTAR BED AND A 6 INCH DEEP LAYER OF COURSE AGGREGATE ARE REQUIRED WHEN A PRECAST CONCRETE CUTOFF WALL IS USED.
- NO SEPARATE PAYMENT WILL BE MADE FOR THE CONCRETE CUTOFF WALL. THE COST OF THE CONCRETE CUTOFF WALL SHALL BE INCLUDED IN THE COST OF THE END SECTION.
- REFER TO NOTE 4, CD-601-2.2 FOR SIZE OF CONCRETE CUTOFF WALL.



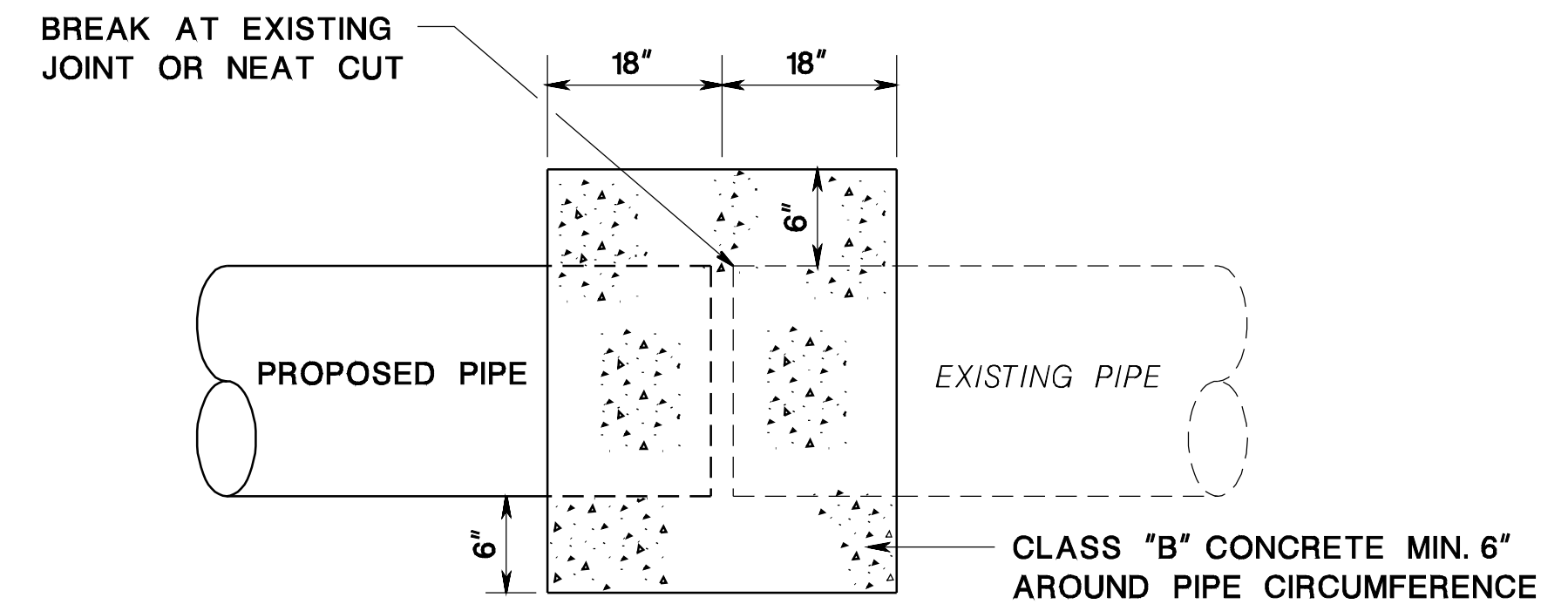
ELEVATION



ELEVATION

END SECTIONS FOR METAL PIPE

CD-601-2.1

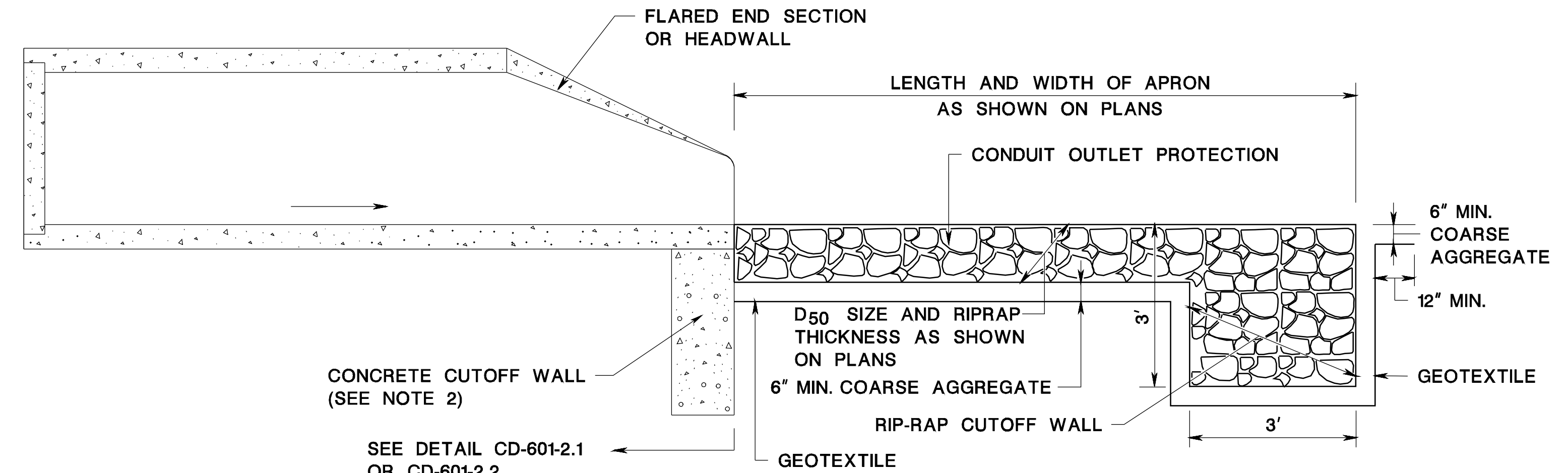


NOTE:

COAT ALL SURFACES TO BE ENCASED IN CONCRETE COLLAR WITH APPROVED EPOXY BONDING COMPOUND. NO SEPARATE PAYMENT WILL BE MADE FOR THE CONCRETE COLLAR. THE COST OF THE CONCRETE COLLAR SHALL BE INCLUDED IN THE COST OF THE VARIOUS PIPE ITEMS ON THE PROJECT.

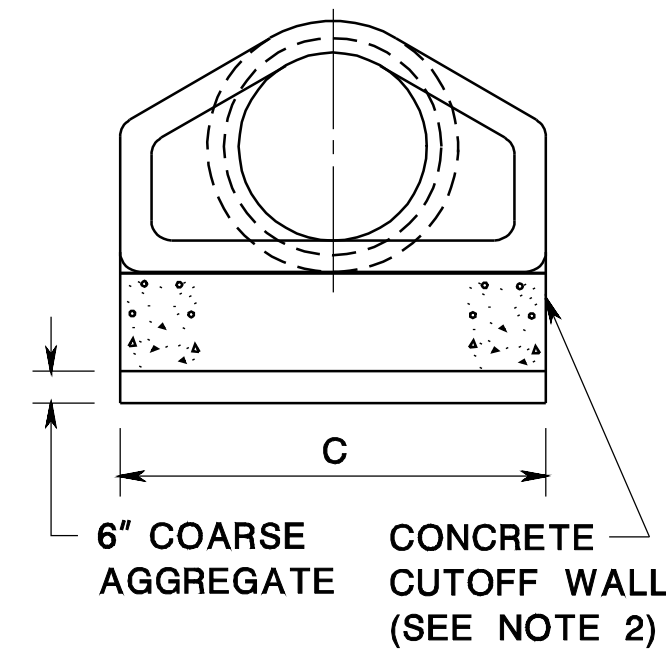
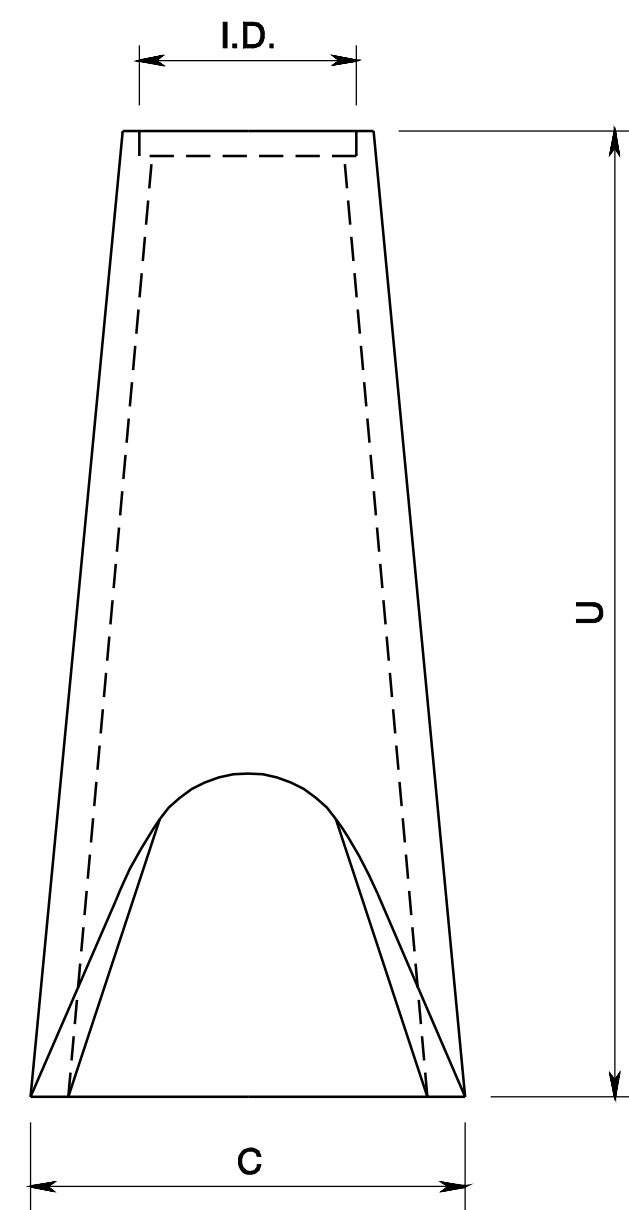
CONCRETE COLLAR
(FOR JOINING PROPOSED PIPE TO EXISTING PIPE)

CD-601-2.3

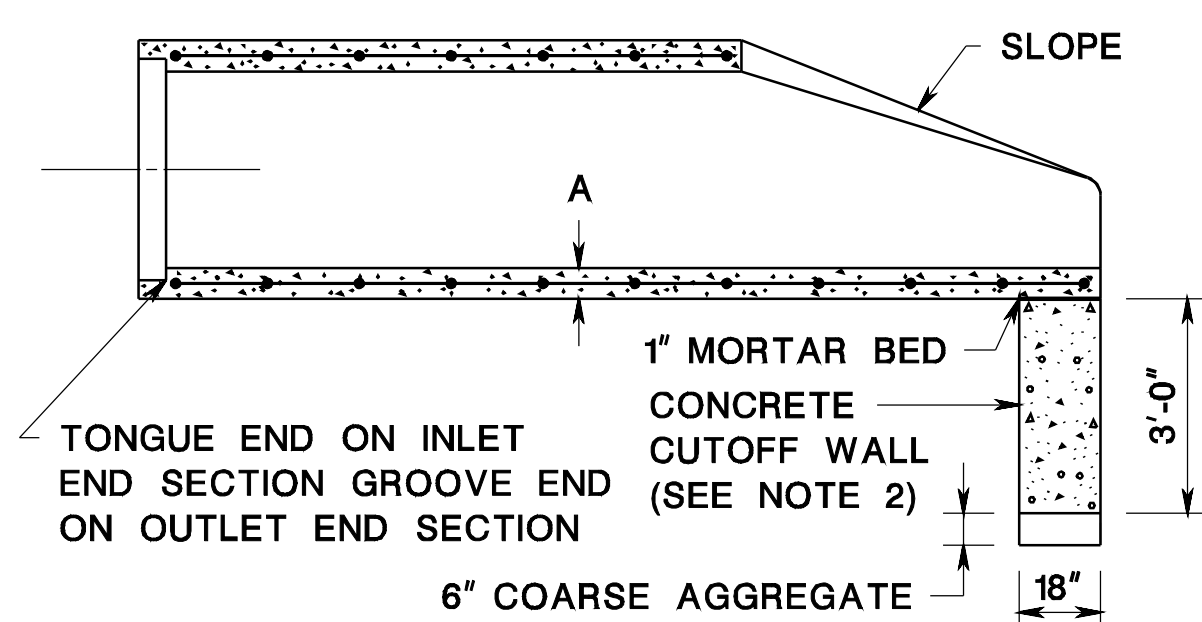


STORMWATER OUTFALL PROTECTION

CD-601-2.4



END SECTIONS FOR CONCRETE PIPE



DIMENSIONS (INCHES)												
I.D.	12	15	18	21	24	27	30	36	42	48	54	60
A	2	2 1/4	2 1/2	2 3/4	3	3 1/4	3 1/2	4	4 1/2	5	5 1/2	6
U	72	72	72	72	72	72	72	96	96	96	96	96
C	28	34.5	41	47.5	54	60.5	67	80	87	94	101	108

NOTES:

- MINOR VARIATIONS TO THE ABOVE DIMENSIONS ARE ACCEPTABLE WITH THE EXCEPTION OF THE INSIDE DIAMETER DIMENSION.
- A 1 INCH THICK MORTAR BED AND A 6 INCH DEEP LAYER OF COURSE AGGREGATE ARE REQUIRED WHEN A PRECAST CONCRETE CUTOFF WALL IS USED.
- NO SEPARATE PAYMENT WILL BE MADE FOR THE CONCRETE CUTOFF WALL. THE COST OF THE CONCRETE CUTOFF WALL SHALL BE INCLUDED IN THE COST OF THE END SECTION.
- THE WIDTH OF THE CONCRETE CUTOFF WALL SHALL BE EQUAL TO THE MAXIMUM WIDTH OF THE END SECTION AS INDICATED ON THE DETAIL BY DIMENSION "C". HOWEVER, IF THE ACTUAL MAXIMUM WIDTH EXCEEDS THE CHART VALUE OF "C", THE WIDTH OF THE CONCRETE CUTOFF WALL SHALL EQUAL THE ACTUAL MAXIMUM WIDTH OF THE END SECTION.

CD-601-2.2

PIPE END SECTIONS

N.T.S.

CD-601-2

NEW JERSEY DEPARTMENT OF TRANSPORTATION

CONSTRUCTION DETAILS