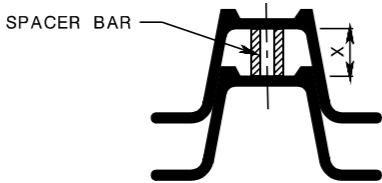
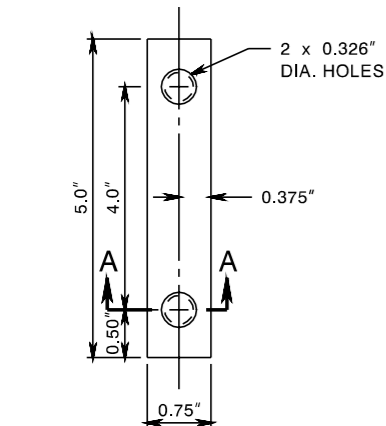


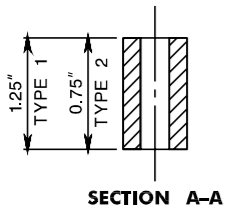
NOTES:

1. DRIVE ANCHOR POST ASSEMBLY TO WITHIN APPROXIMATELY 12 INCHES ABOVE GROUND LEVEL. PLACE BOLT AND WASHER IN FIRST AND FIFTH HOLES FROM THE TOP END, AND SECURE BOLTS ONTO SPACER.
2. DRIVE ANCHOR POST ASSEMBLY TO WITHIN A MAXIMUM OF 4 INCHES ABOVE GROUND LEVEL.
3. DIG OUT AROUND BACK OF ANCHOR POST ASSEMBLY TO ALLOW ROOM FOR TOP POST TO BE ATTACHED.
4. NEST TOP POST ASSEMBLY ONTO PROTRUDING ANCHOR POST ASSEMBLY BOLTS, THROUGH THE FIRST AND FIFTH HOLES FROM THE BOTTOM OF THE TOP POST.
5. PLACE AND TIGHTEN A SELF-LOCKING FLANGE NUT ON EACH BOLT. WHEN INSTALLATION IS COMPLETE, TOP OF GROUND POST SHALL NOT EXCEED 4 INCHES ABOVE GROUND LEVEL.
6. SIZE OF CONNECTOR BOLT FOR TYPE 1, $\frac{5}{16}$ " x $\frac{1}{2}$ "
SIZE OF CONNECTOR BOLT FOR TYPE 2, $\frac{5}{16}$ " x 2"
7. THE CONNECTOR BOLTS SHALL BE FULLY THREADED. EACH CONNECTOR BOLT AND NUT SHALL BE CLEARLY STAMPED WITH MANUFACTURER'S IDENTIFYING MARK.

**ANCHOR POST ASSEMBLY
SIGN SUPPORTS**



WHEN X IS GREATER THAN 0.75", USE TYPE 1 SPACER BAR
WHEN X IS 0.75" OR LESS, USE TYPE 2 SPACER BAR

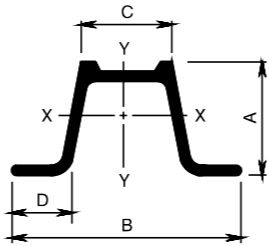


SPACER BAR

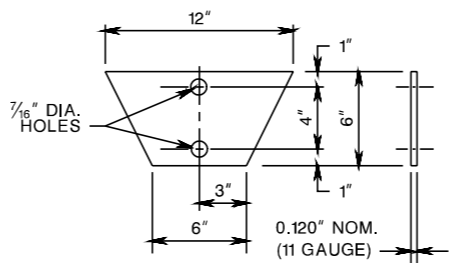
WEIGHT * LBS. / FT.	DIMENSIONS (IN)				AREA IN. ²	X-X AXIS **		Y-Y AXIS	
	"A"	"B"	"C"	"D"		I (IN. ⁴)	S (IN. ³)	I (IN. ⁴)	S (IN. ³)
2.50	1.516	3.062	1.278	0.669	0.760	0.228	0.313	0.539	0.352
4.00	1.968	3.500	1.336	0.834	1.187	0.611	0.707	1.161	0.664

* ± 5%

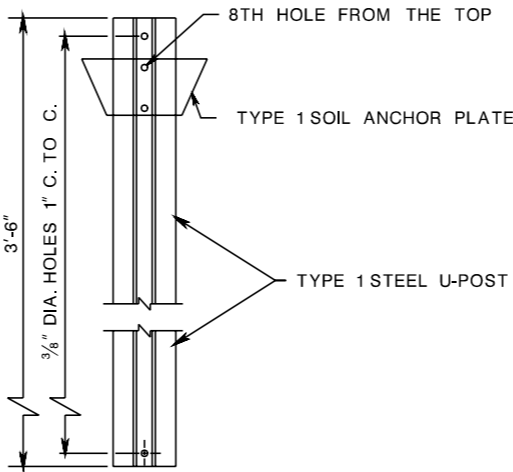
** GOVERNING SECTION



**TYPE 1 STEEL
U-POST**



**TYPE 1
SOIL ANCHOR PLATE**



**TYPE 1
ANCHOR POST
ASSEMBLY**

**STEEL POSTS, POST CLIPS, SPACING, ETC.
AND TWO PIECE STEEL U-POSTS.**

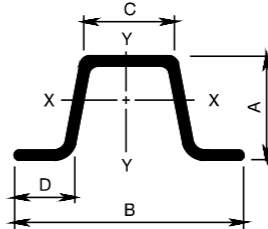
NOTES:

1. ANCHOR POST AND TOP POST SHALL BE OF EQUAL WEIGHT/FEET.
2. SOIL ANCHOR PLATE SHALL BE ATTACHED TO ALL ANCHOR POSTS.
3. THE MATERIAL FOR THE SOIL ANCHOR PLATES SHALL BE CARBON SHEET STEEL.
4. THE STEEL "U" POST SHALL BE GRADE 60.
5. THE STEEL "U" POST MUST MEET THE SAFETY OF NCHRP REPORT 350.

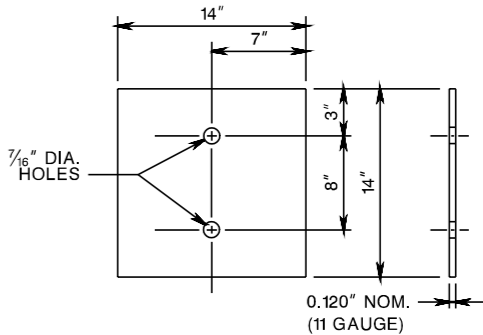
WEIGHT * LBS. / FT.	DIMENSIONS (IN)				AREA IN. ²	X-X AXIS **		Y-Y AXIS	
	"A"	"B"	"C"	"D"		I (IN. ⁴)	S (IN. ³)	I (IN. ⁴)	S (IN. ³)
2.50	1.549	3.125	1.250	0.625	0.748	0.233	0.289	0.551	0.353
4.00	1.845	3.500	1.625	0.718	1.190	0.500	0.560	1.190	0.690

* ± 5%

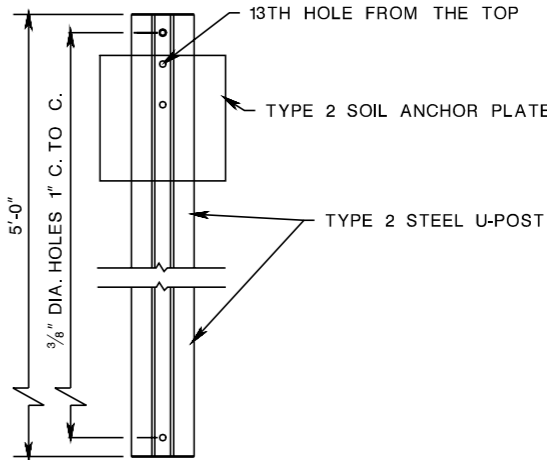
** GOVERNING SECTION



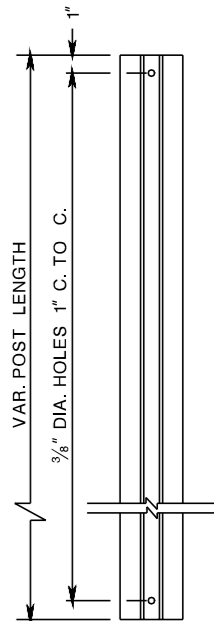
**TYPE 2 STEEL
U-POST**



**TYPE 2
SOIL ANCHOR PLATE**



**TYPE 2
ANCHOR POST
ASSEMBLY**



**TOP POST
U-POST**

**STEEL U-POST SIGN
SUPPORTS**

N.T.S.

NEW JERSEY DEPARTMENT OF TRANSPORTATION

CONSTRUCTION DETAILS

CD-619-5

CD-619-5.1