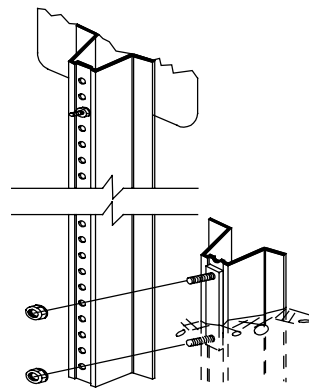
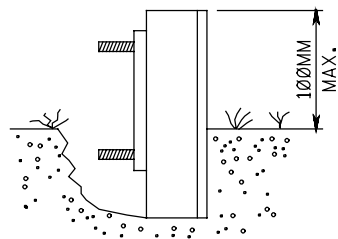
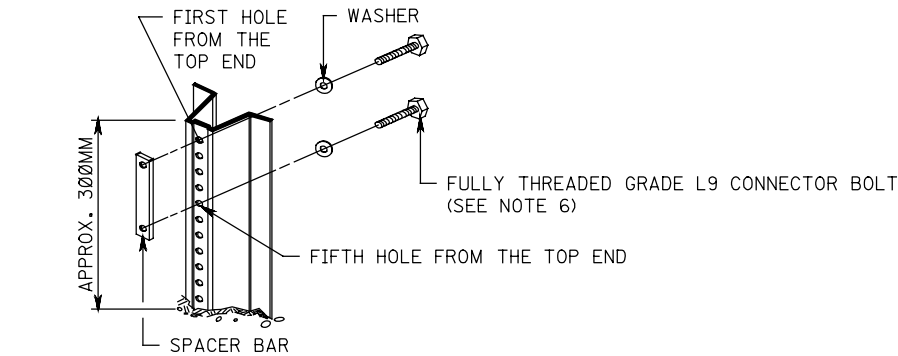
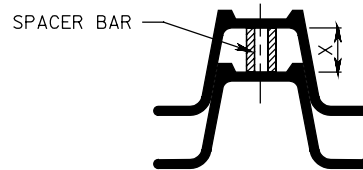
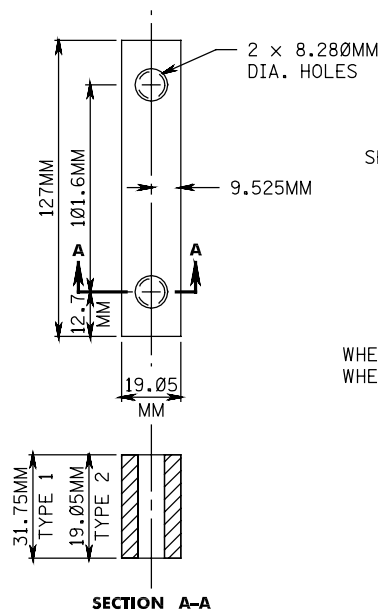


BDC03D-02 - CD-619-5.2 SPACE BAR  
- CD-619-5.1 NOTES ADDED  
BDC01D-4 - ORIGINAL SHEET



ANCHOR POST ASSEMBLY  
SIGN SUPPORTS



WHEN X IS GREATER THAN 19.05MM, USE TYPE 1 SPACER BAR  
WHEN X IS 19.05MM OR LESS, USE TYPE 2 SPACER BAR

SPACER BAR

NOTES:

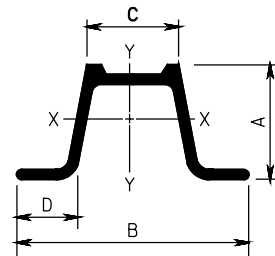
1. DRIVE ANCHOR POST ASSEMBLY TO WITHIN APPROXIMATELY 300MM ABOVE GROUND LEVEL. PLACE BOLT AND WASHER IN FIRST AND FIFTH HOLES FROM THE TOP END, AND SECURE BOLTS ONTO SPACER.
2. DRIVE ANCHOR POST ASSEMBLY TO WITHIN A MAXIMUM OF 100MM ABOVE GROUND LEVEL.
3. DIG OUT AROUND BACK OF ANCHOR POST ASSEMBLY TO ALLOW ROOM FOR TOP POST TO BE ATTACHED.
4. NEST TOP POST ASSEMBLY ONTO PROTRUDING ANCHOR POST ASSEMBLY BOLTS, THROUGH THE FIRST AND FIFTH HOLES FROM THE BOTTOM OF THE TOP POST.
5. PLACE AND TIGHTEN A SELF-LOCKING FLANGE NUT ON EACH BOLT. WHEN INSTALLATION IS COMPLETE, TOP OF GROUND POST SHALL NOT EXCEED 100MM ABOVE GROUND LEVEL.
6. SIZE OF CONNECTOR BOLT FOR TYPE 1, 8 x 38  
SIZE OF CONNECTOR BOLT FOR TYPE 2, 8 x 50
7. THE CONNECTOR BOLTS AND SPACERS SHALL BE FULLY THREADED. EACH CONNECTOR BOLT AND NUT SHALL BE CLEARLY STAMPED WITH MANUFACTURER'S IDENTIFYING MARK.

CD-619-5.2

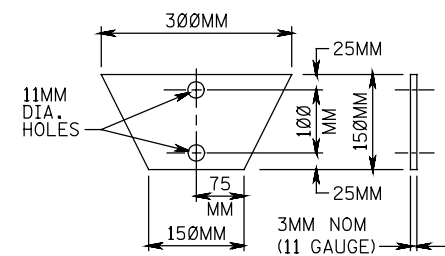
| WEIGHT *<br>KG /M | DIMENSIONS (MM) |        |        |        | AREA<br>MM <sup>2</sup> | X-X AXIS **         |                     | Y-Y AXIS            |                     |
|-------------------|-----------------|--------|--------|--------|-------------------------|---------------------|---------------------|---------------------|---------------------|
|                   | "A"             | "B"    | "C"    | "D"    |                         | I(MM <sup>4</sup> ) | S(MM <sup>3</sup> ) | I(MM <sup>4</sup> ) | S(MM <sup>3</sup> ) |
| 3.7               | 38.506          | 77.775 | 32.461 | 16.993 | 489.7                   | 94900               | 5129                | 224348              | 5768                |
| 6.0               | 49.987          | 88.900 | 33.934 | 21.184 | 765.8                   | 254317              | 11586               | 483244              | 10881               |

\* ± 5%

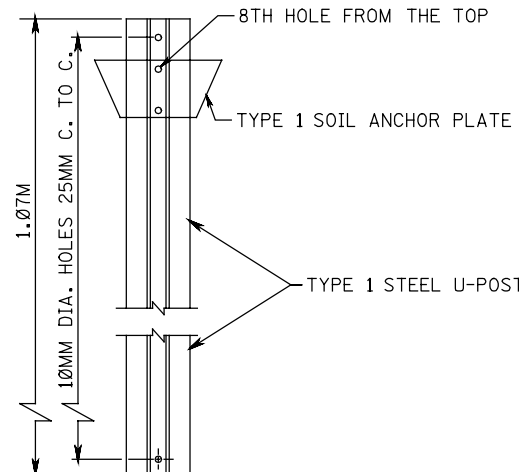
\*\* GOVERNING SECTION



TYPE 1 STEEL  
U-POST



TYPE 1  
SOIL ANCHOR PLATE

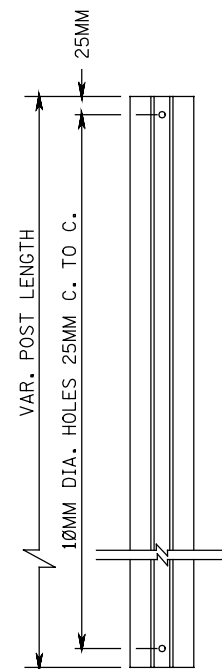


TYPE 1  
ANCHOR POST  
ASSEMBLY

NOTES:

1. ANCHOR POST AND TOP POST SHALL BE OF EQUAL WEIGHT/METER.
2. SOIL ANCHOR PLATE SHALL BE ATTACHED TO ALL ANCHOR POSTS.
3. THE MATERIAL FOR THE SOIL ANCHOR PLATES SHALL BE CARBON SHEET STEEL.
4. THE STEEL "U" POST SHALL BE GRADE 60.
5. THE STEEL "U" POST MUST MEET THE SAFETY OF NCHRP REPORT 350.

STEEL POSTS, POST CLIPS, SPACING, ETC.  
AND TWO PIECE STEEL U-POSTS.

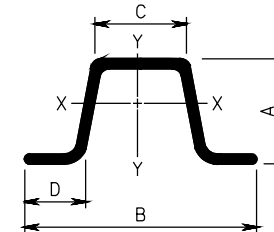


TOP POST  
U-POST

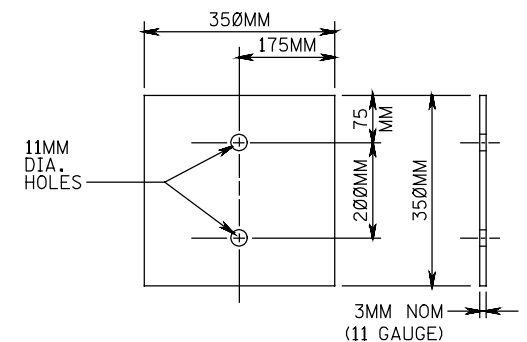
| WEIGHT *<br>KG/M | DIMENSIONS (MM) |        |        |        | AREA<br>MM <sup>2</sup> | X-X AXIS **         |                     | Y-Y AXIS            |                     |
|------------------|-----------------|--------|--------|--------|-------------------------|---------------------|---------------------|---------------------|---------------------|
|                  | "A"             | "B"    | "C"    | "D"    |                         | I(MM <sup>4</sup> ) | S(MM <sup>3</sup> ) | I(MM <sup>4</sup> ) | S(MM <sup>3</sup> ) |
| 3.7              | 39.675          | 79.375 | 31.750 | 15.875 | 482.6                   | 96982               | 4736                | 229343              | 5785                |
| 6.0              | 44.450          | 88.900 | 42.443 | 18.237 | 767.7                   | 208115              | 9177                | 495315              | 11307               |

\* ± 5%

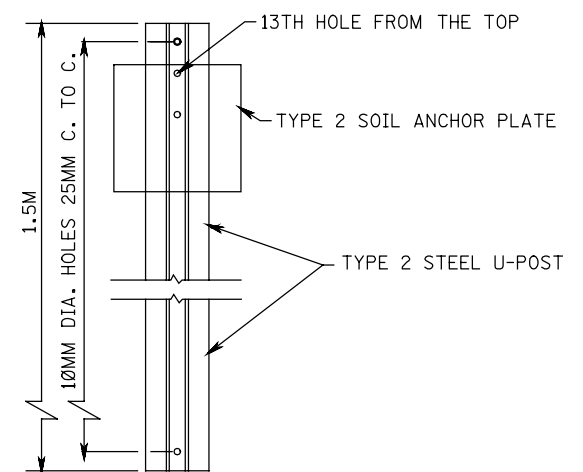
\*\* GOVERNING SECTION



TYPE 2 STEEL  
U-POST



TYPE 2  
SOIL ANCHOR PLATE



TYPE 2  
ANCHOR POST  
ASSEMBLY

STEEL U-POST SIGN  
SUPPORTS

N.T.S.

NEW JERSEY DEPARTMENT OF TRANSPORTATION

CONSTRUCTION DETAILS

CD-619-5.1