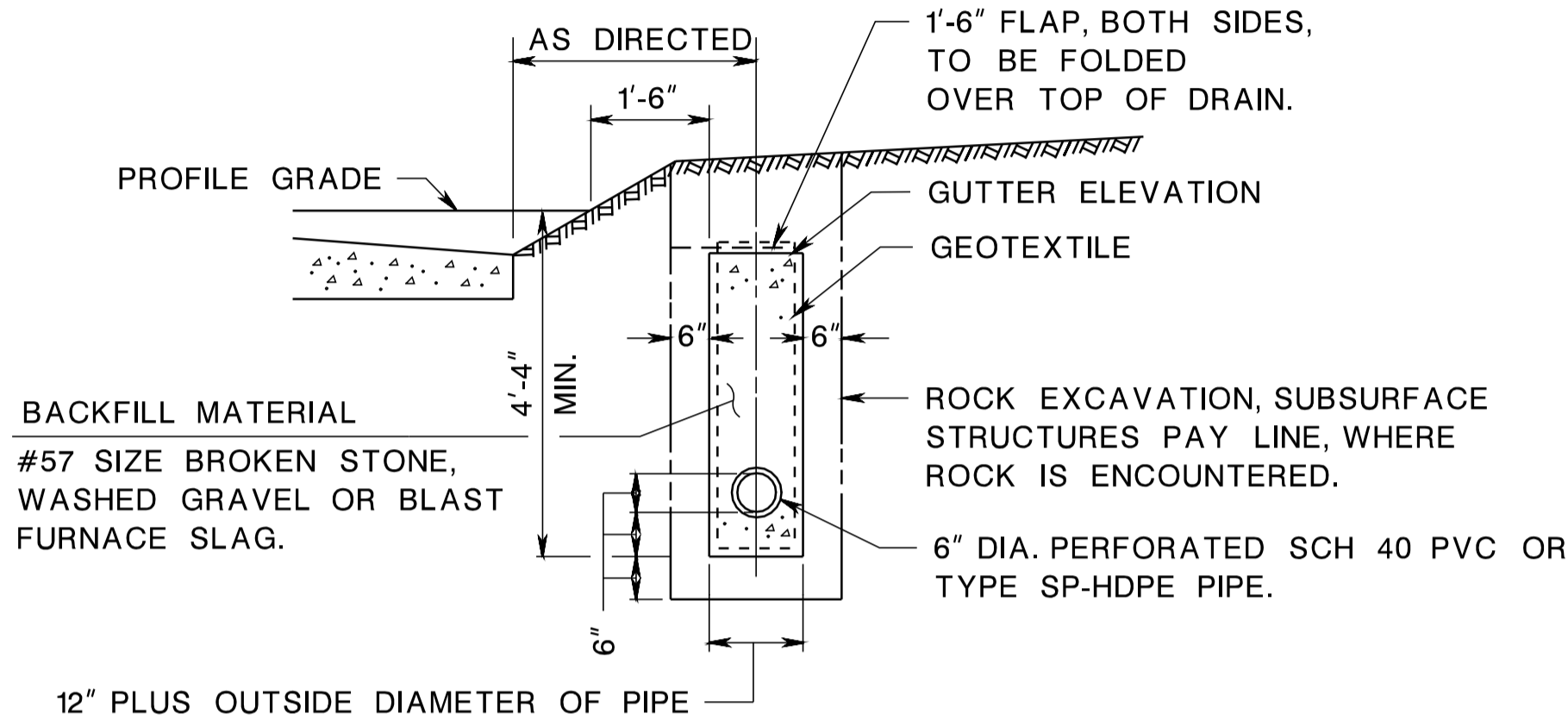


pen table= E:\z_System\pilot\TBLs\Roadway\basic.tbl
scale= 30.00000001.0000000
date= 27-OCT-2004 15:56
ID=TPX01A2
BD004D-03 - CD-601-1.1 POROUS PIPE REMOVED.
CD-601.2 & 3 ARE REVISED
BD000D-1 - ORIGINAL SHEET

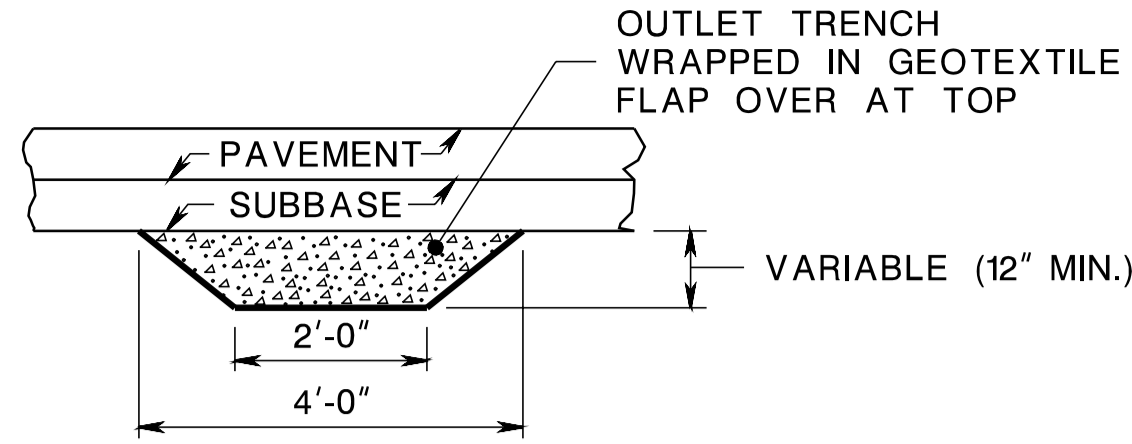
NOTES:

UNDERDRAIN IS SHOWN PARALLEL TO THE EDGE OF PAVEMENT, BUT MAY BE USED IN OTHER LOCATIONS IF SO DIRECTED BY THE ENGINEER.

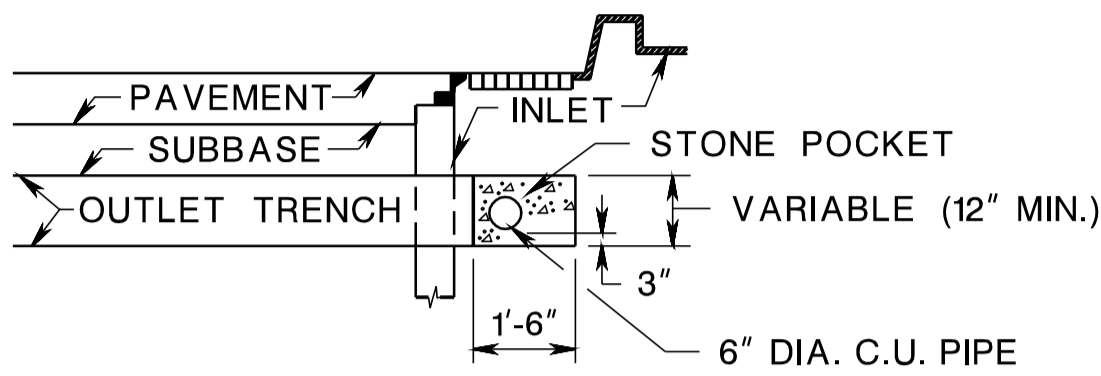


UNDERDRAIN TYPE F

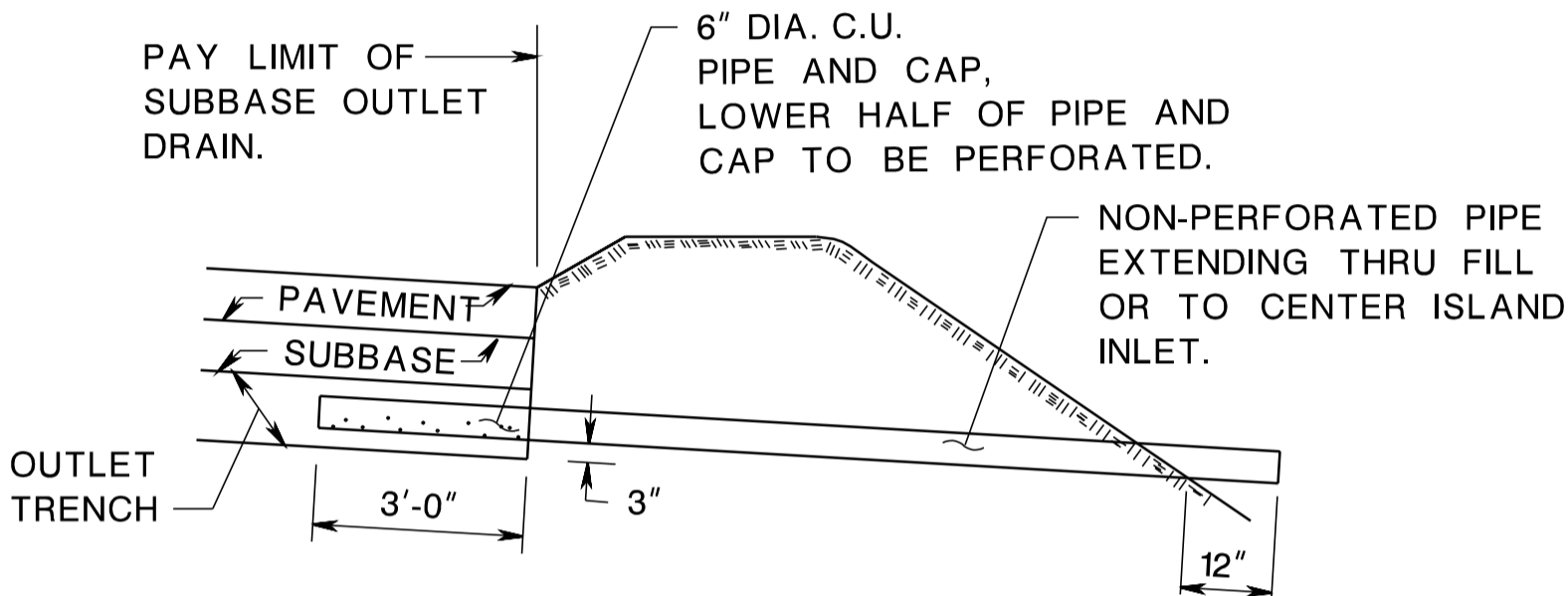
CD-601-1.1



SECTION A-A



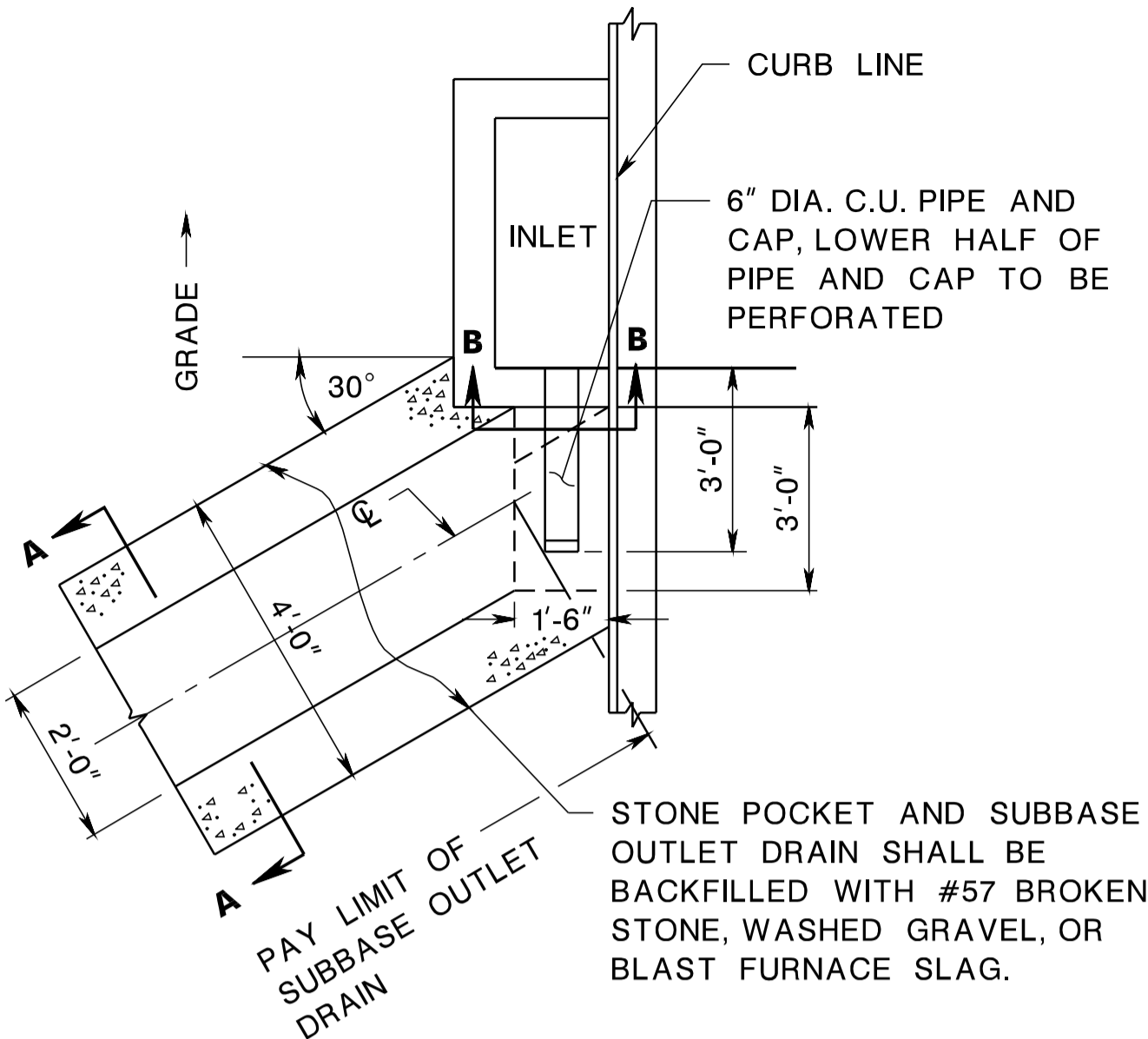
SECTION B-B



SCHEME FOR WATER DISPOSAL WHERE INLETS ARE IN CENTER ISLAND OR ARE NOT AVAILABLE

SUBBASE OUTLET DRAIN WITH 6" CORRUGATED UNDERDRAIN PIPE

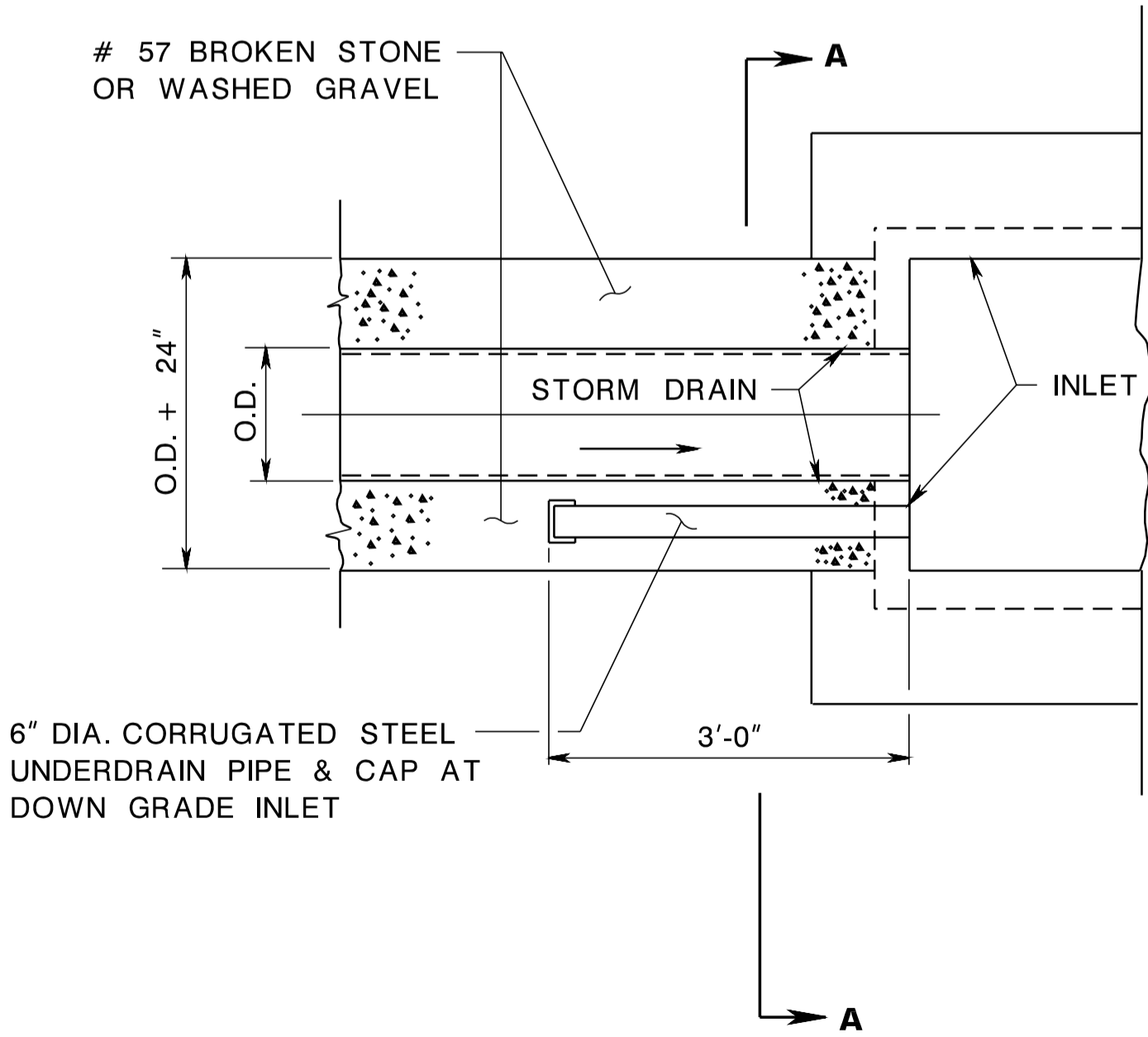
CD-601-1.2



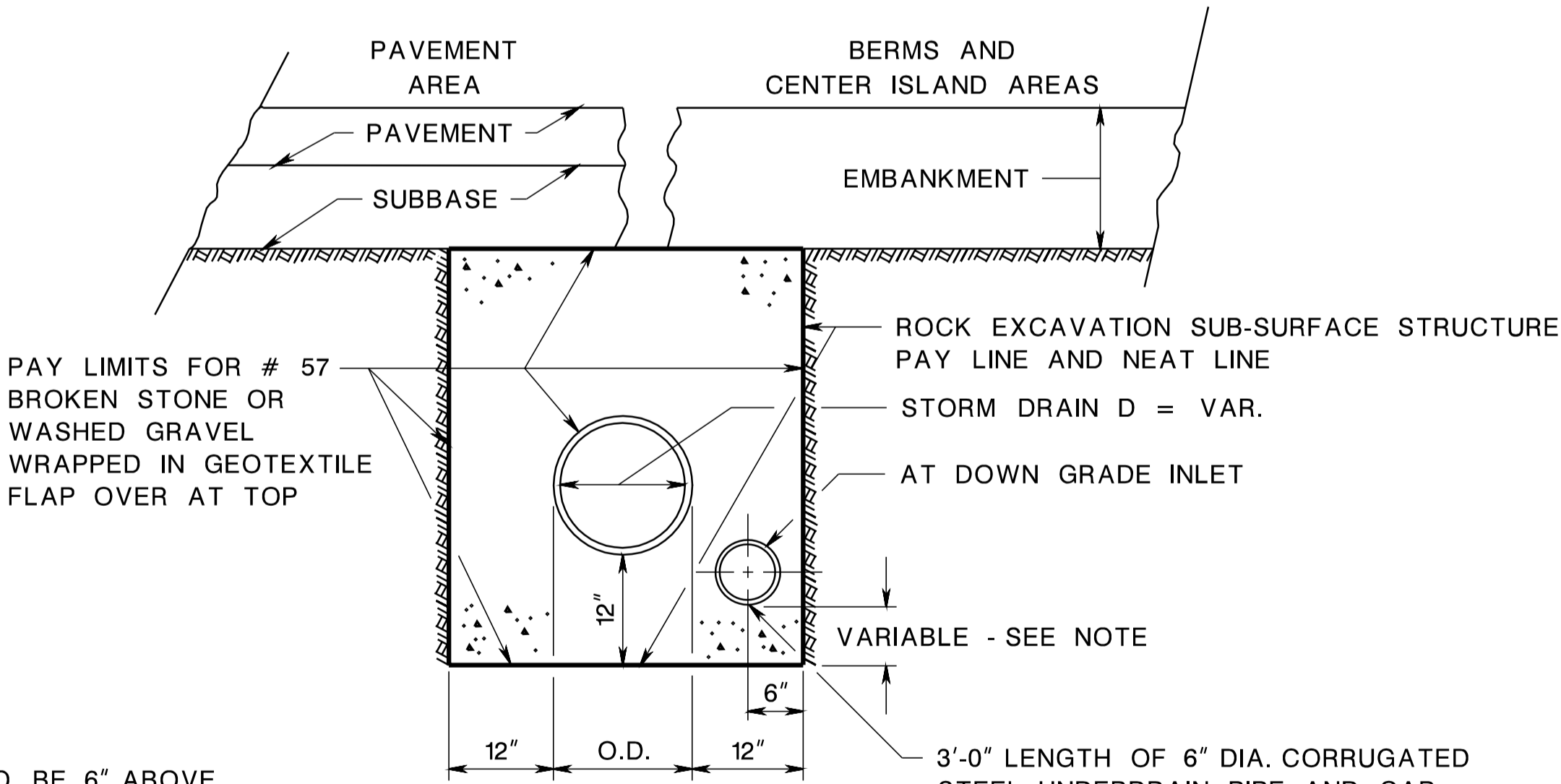
PLAN

NOTE:

DISCHARGED WATER SHALL IN NO CASE VIOLATE DRAINAGE RIGHTS.



COMBINED STORM DRAIN AND OUTLET TRENCH IN ROCK CUTS



SECTION A-A

NOTE:

INVERT OF 6" DIA. STEEL PIPE TO BE 6" ABOVE BOTTOM OF INLET OR 6" ABOVE BOTTOM OF TRENCH WHICHEVER IS HIGHER.

UNDERDRAINS

N.T.S.

CD-601-1

NEW JERSEY DEPARTMENT OF TRANSPORTATION

CONSTRUCTION DETAILS

CD-601-1.3