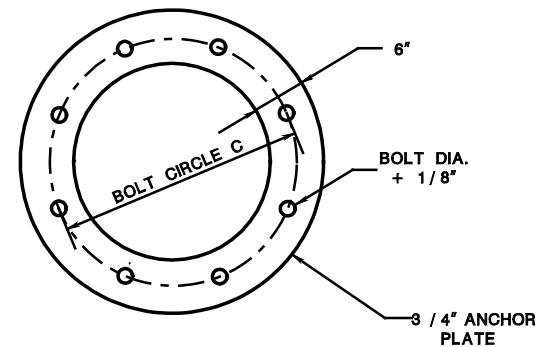
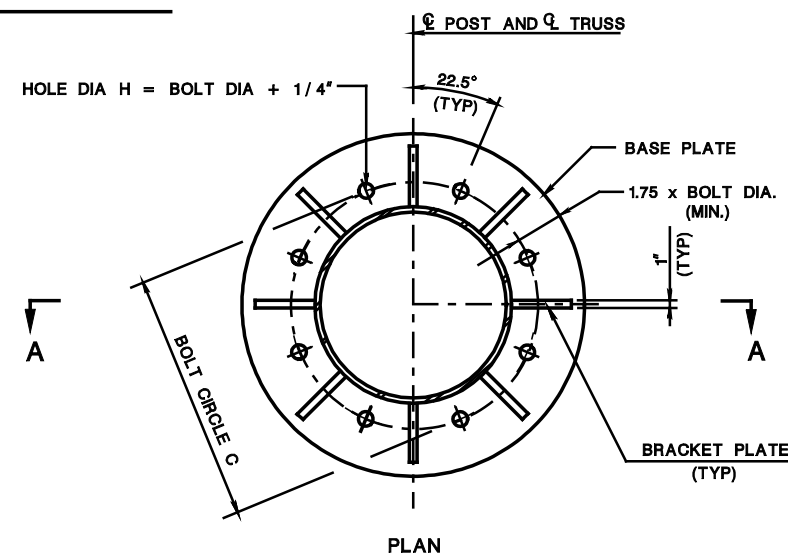


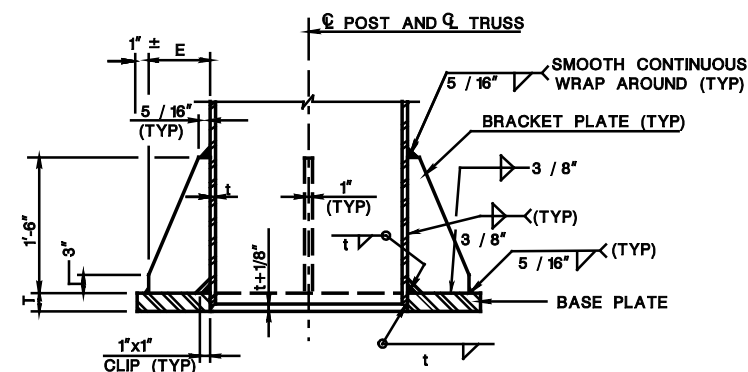
TEMPLATE PLATE DETAIL



ANCHOR PLATE DETAIL

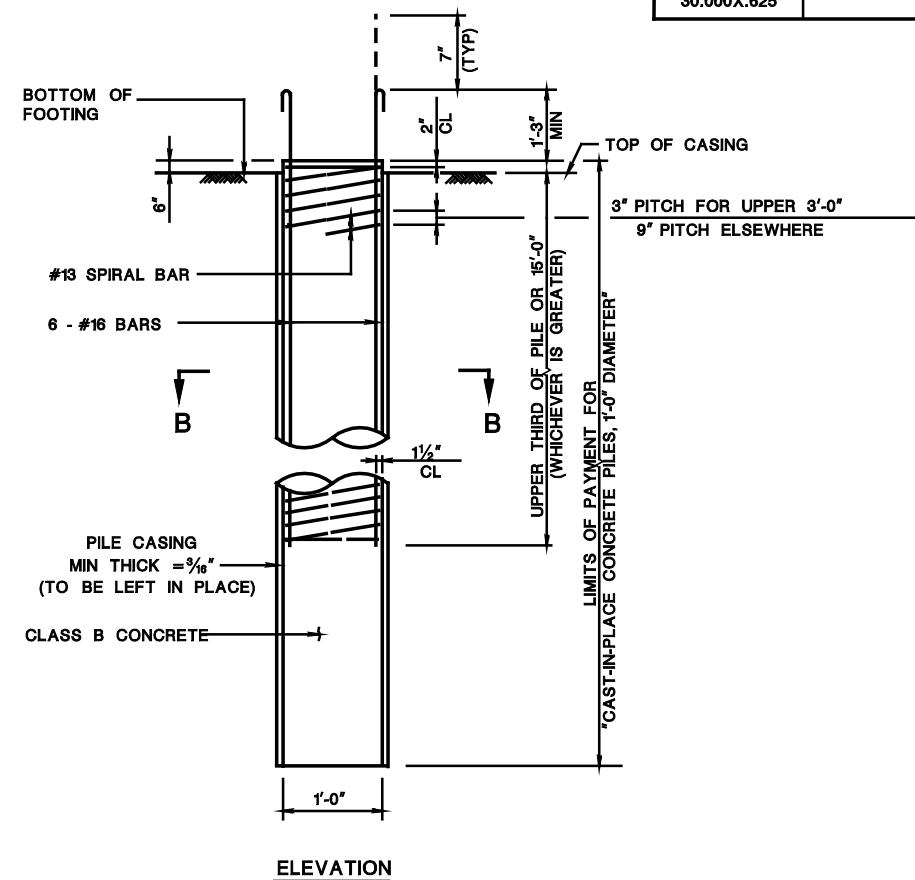


PLAN

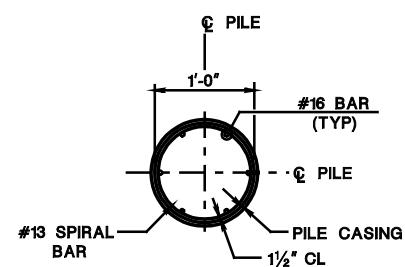


SECTION A-A

POST BASE PLATE DETAIL



ELEVATION



SECTION B-B

CAST-IN-PLACE CONCRETE PILE

POST SHAFT BASE ASSEMBLY						
POST O.D.xTHICK (IN)	BASE PLATE	BRACKET PLATES	ANCHOR BOLTS			
	THICKNESS T (IN)	E (IN)	BOLT CIRCLE C (IN)	SIZE DIAxLGTH (IN)	BOLT TENSION (KIPS)	PROJ* (MIN.) (IN)
14.000X.500	2	7	22	2¼X 57	113	11½
16.000X.500	2¾	7	24	2¼X 57	113	11½
18.000X.500	2¾	7	26	2¼X 57	113	11½
20.000X.500	2¾	7½	28	2½X 67	139	12½
24.000X.500	3	8	32	2¾X 72	172	13½
26.000X.500	3	10	36	3¼X 82	247	15
26.000X.750	3	10	36	3¼X 82	247	15
26.000X.875	3	10	36	3¼X 82	247	15
30.000x.500	3	10	40	3¼X 82	247	15
30.000X.625						

* PROJECTION LENGTH SHOWN IS
BASED ON USING DOUBLE NUTS.

NOTES:

1. BEARING PILES SHALL BE CAST-IN-PLACE CONCRETE PILES. ALL PILES SHALL BE 1'-0" IN DIAMETER OR EQUIVALENT AND SHALL HAVE A MINIMUM BEARING CAPACITY OF 50 KIPS. THE NUMBER AND SPACING OF PILES SHALL BE AS INDICATED ON SIGN STRUCTURE DRG. CA-D3.
2. APPROVED METAL SPACERS SHALL BE ATTACHED TO THE TOP AND BOTTOM SPIRALS TO ENSURE THAT THE REQUIRED CLEAR DISTANCE TO THE CASING IS MAINTAINED.
3. NO CONCRETE SHALL BE PLACED IN CAST-IN-PLACE PILES UNTIL AFTER ALL PILE CASINGS FOR THE FOOTING HAVE BEEN DRIVEN.
4. ANCHOR BOLTS SHALL BE PROVIDED WITH FIVE HEAVY HEXAGON NUTS AND TWO WASHERS AS SHOWN ON THE ANCHOR BOLT DETAIL.
5. ANCHOR BOLTS SHALL BE FULLY GALVANIZED AFTER THREADING.
6. REFER TO THE NJDOT STANDARD SPECIFICATIONS FOR ANCHOR BOLT TIGHTENING PROCEDURES. WHEN CALIBRATED WRENCHES ARE USED FOR BOLT INSTALLATION, THEY SHALL BE SET TO PROVIDE THE TENSION THAT IS SPECIFIED IN THE TABLE ABOVE.
7. TEMPLATE PLATE WITH NUTS ON BOTH SIDES SHALL BE USED TO MAINTAIN THE SPACING AND ALIGNMENT OF ANCHOR RODS.



SIGN STRUCTURE DRG. CA-D6

NEW JERSEY DEPARTMENT OF TRANSPORTATION
BUREAU OF STRUCTURAL ENGINEERING

CANTILEVER SIGN SUPPORT STRUCTURES POST BASE AND FOUNDATION DETAILS

ROUTE: SECTION

SCALE : NONE

BRIDGE SHEET NO. OF

