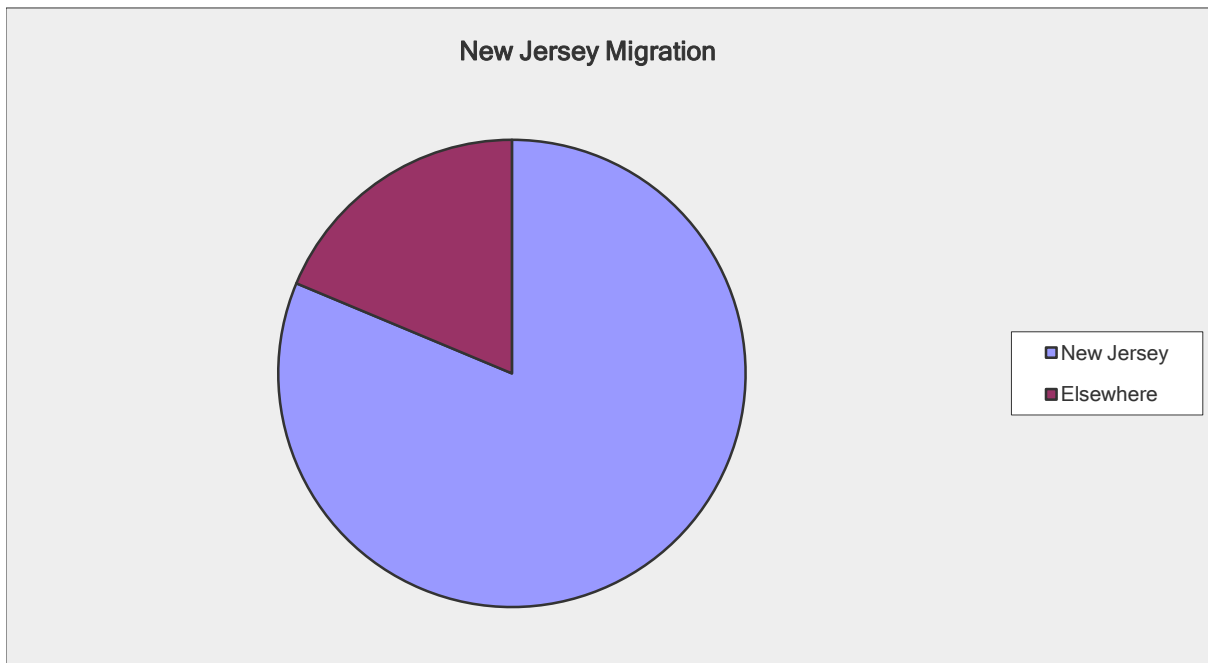


New Jersey Migration: Question 1

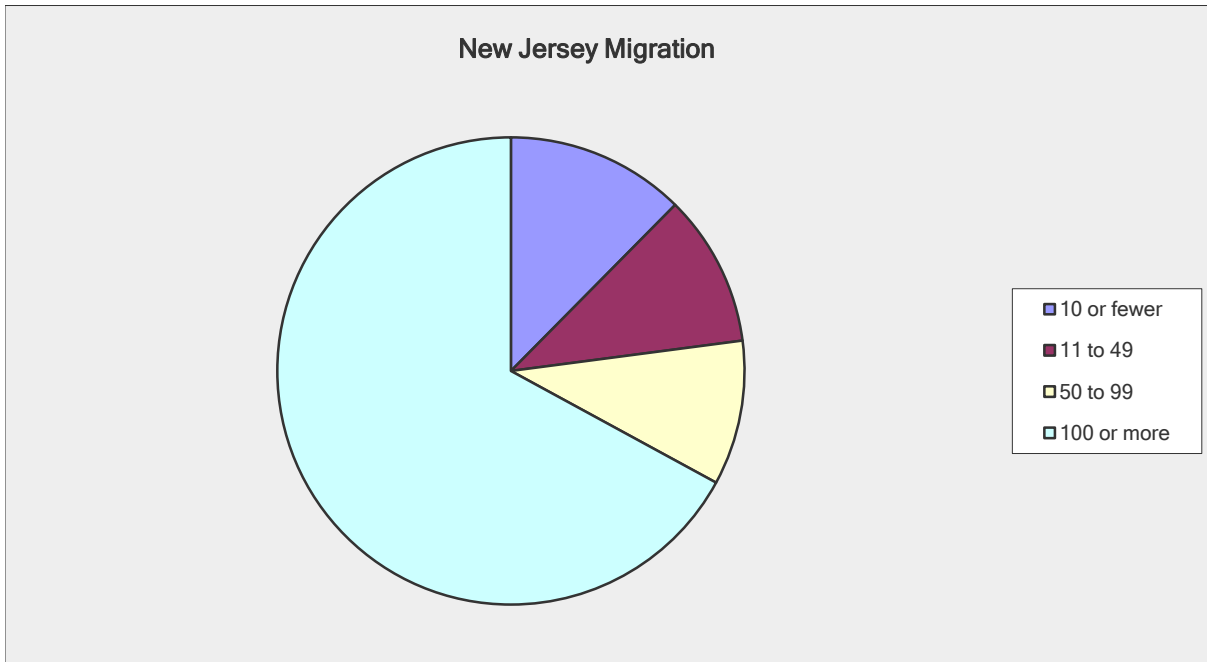
Where is your firm headquartered?		
Answer Options	Response Percent	Response Count
New Jersey	81.3%	170
Elsewhere	18.7%	39
<i>answered question</i>		209
<i>skipped question</i>		7



New Jersey Migration: Question 2

How many clients does your firm have?

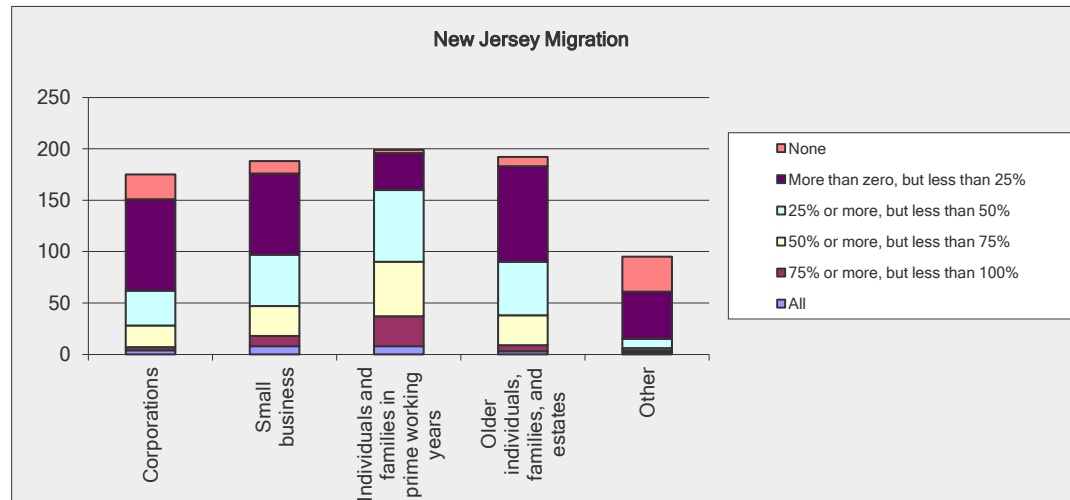
Answer Options	Response Percent	Response Count
10 or fewer	12.4%	26
11 to 49	10.5%	22
50 to 99	10.0%	21
100 or more	67.0%	140
<i>answered question</i>		209
<i>skipped question</i>		7



New Jersey Migration: Question 3

What is the nature of your firm's clientele?

Answer Options	None	More than zero, but less than 25%	25% or more, but less than 50%	50% or more, but less than 75%	75% or more, but less than 100%	All	Response Count	Summary Percentage
Corporations	24	89	34	21	3	4	175	15.8
Small business	12	79	50	29	10	8	188	23.0
Individuals and families in prime working years	3	36	70	53	29	8	199	35.2
Older individuals, families, and estates	9	93	52	29	6	3	192	20.8
Other	34	46	9	2	2	2	95	5.1
<i>answered question</i>							208	
<i>skipped question</i>							8	

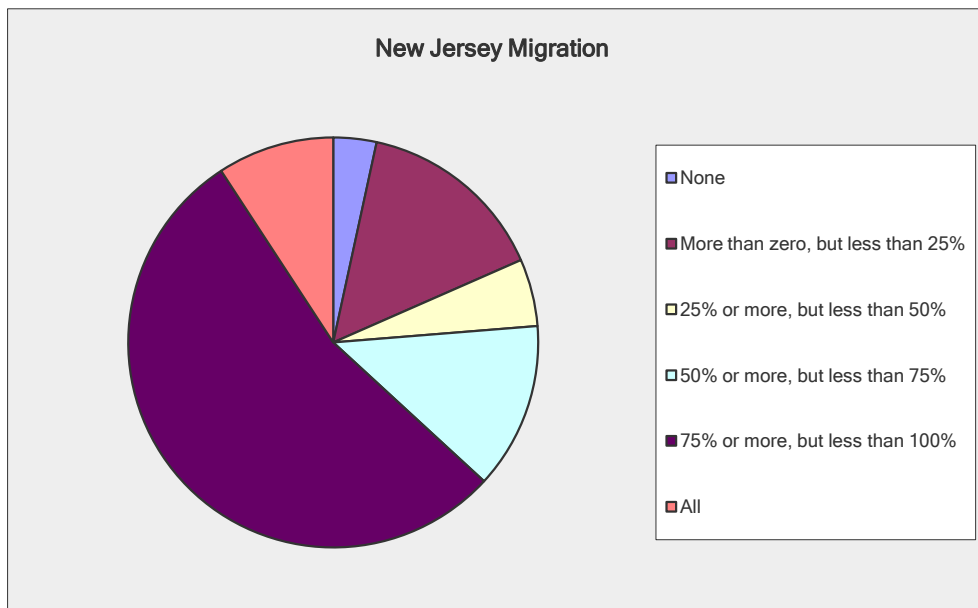


New Jersey Migration: Question 4

What proportion of your firm's clients reside in New Jersey?		
Answer Options	Response Percent	Response Count
None	3.4%	7
More than zero, but less than 25%	15.0%	31
25% or more, but less than 50%	5.3%	11
50% or more, but less than 75%	13.1%	27
75% or more, but less than 100%	53.9%	111
All	9.2%	19
<i>answered question</i>		206
<i>skipped question</i>		10

0.0
1.9
2.0
8.2
47.1
9.2

(summary percentage of New Jersey clientele)

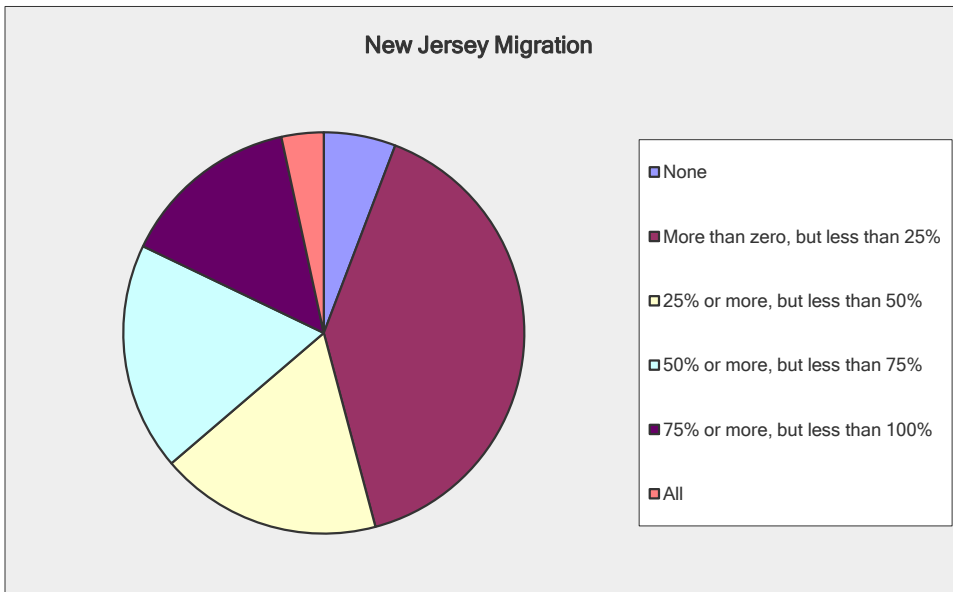


New Jersey Migration: Question 5

What percentage of your firm's New Jersey client base has active ownership interests in New Jersey business(es)? (Please do not include those clients whose New Jersey business participation consists solely of share-holdings in publically-traded corporations)

Answer Options	Response Percent	Response Count	Percentage
None	5.8%	12	0.0
More than zero, but less than 25%	40.1%	83	5.0
25% or more, but less than 50%	17.9%	37	6.7
50% or more, but less than 75%	18.4%	38	11.5
75% or more, but less than 100%	14.5%	30	12.7
All	3.4%	7	3.4
		<i>answered question</i>	207
		<i>skipped question</i>	9

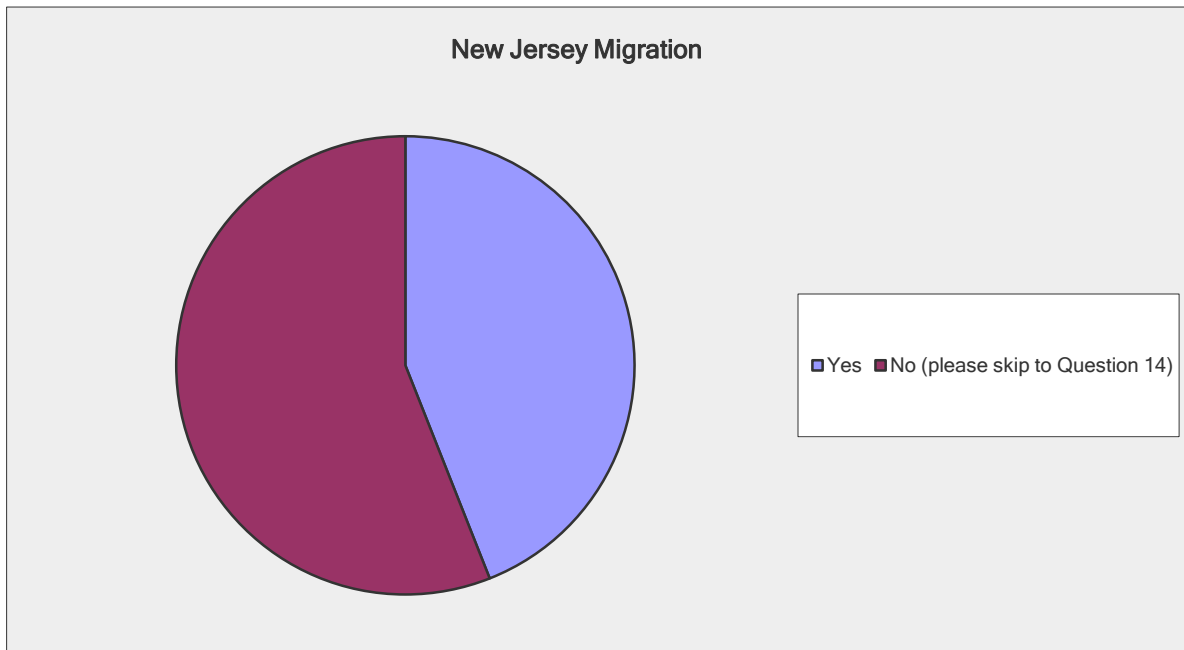
(summary percentage of clients with New Jersey business ownership interests)
39.3



New Jersey Migration: Question 6

Since January 1, 2009, have you advised small business, individual, or household clients about relocating from New Jersey?

Answer Options	Response Percent	Response Count
Yes	44.0%	91
No (please skip to Question 14)	56.0%	116
<i>answered question</i>		207
<i>skipped question</i>		9

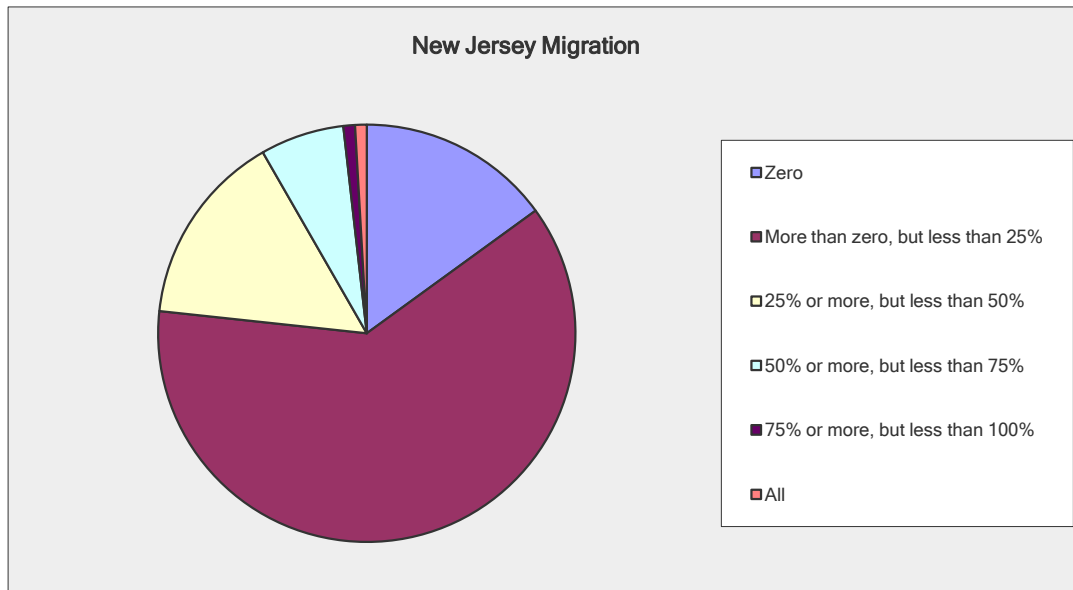


New Jersey Migration: Question 7

Thinking about the period from January 1, 2009 to the present, what percentage of your client base having active ownership interests in New Jersey business(es) have relocated outside New Jersey, or expressed interest in relocating from New Jersey? (Please do not include those clients whose New Jersey business participation consists solely of share-holdings in publically-traded corporations)

Answer Options	Response Percent	Response Count	Percentage
Zero	15.0%	16	0.0
More than zero, but less than 25%	61.7%	66	7.7
25% or more, but less than 50%	15.0%	16	5.6
50% or more, but less than 75%	6.5%	7	4.1
75% or more, but less than 100%	0.9%	1	0.8
All	0.9%	1	0.9
		<i>answered question</i>	107
		<i>skipped question</i>	109

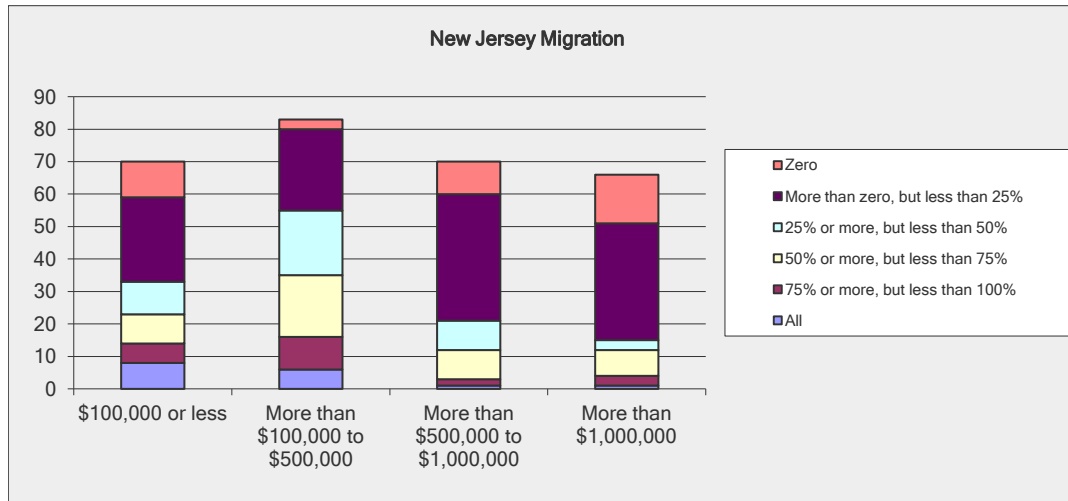
(summary percentage of New Jersey business ownership clients considering out-19.2 migration)



New Jersey Migration: Question 8

What is the percentage breakdown of household income in the group of clients identified in question 6?

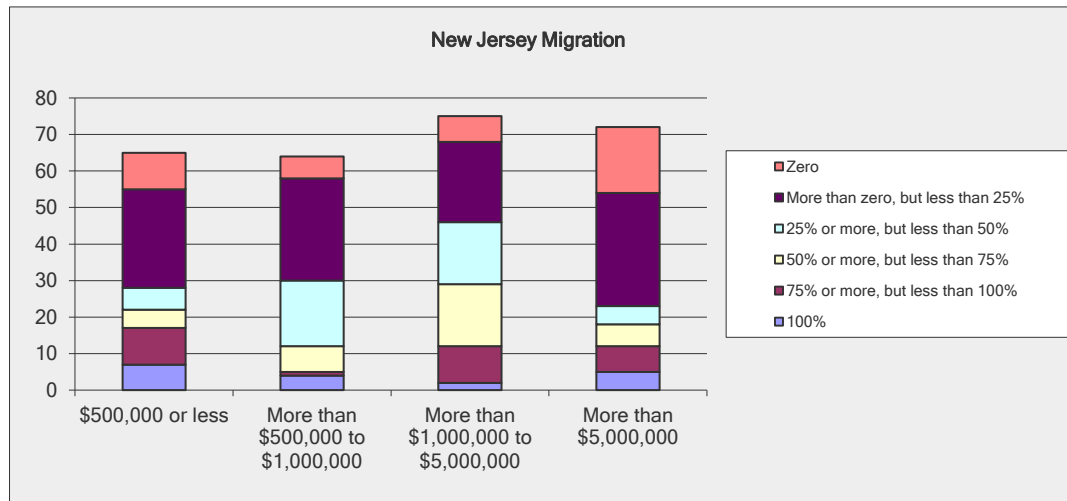
Answer Options	Zero	More than zero, but less than 25%	25% or more, but less than 50%	50% or more, but less than 75%	75% or more, but less than 100%	All	Response Count	Summary Percentage	
\$100,000 or less	11	26	10	9	6	8	70	27.5	
More than \$100,000 to \$500,000	3	25	20	19	10	6	83	39.6	
More than \$500,000 to \$1,000,000	10	39	9	9	2	1	70	17.7	
More than \$1,000,000	15	36	3	8	3	1	66	15.2	
							<i>answered question</i>	102	
							<i>skipped question</i>	114	



New Jersey Migration: Question 9

What is the percentage breakdown of household net worth in the group of clients identified in question 6?

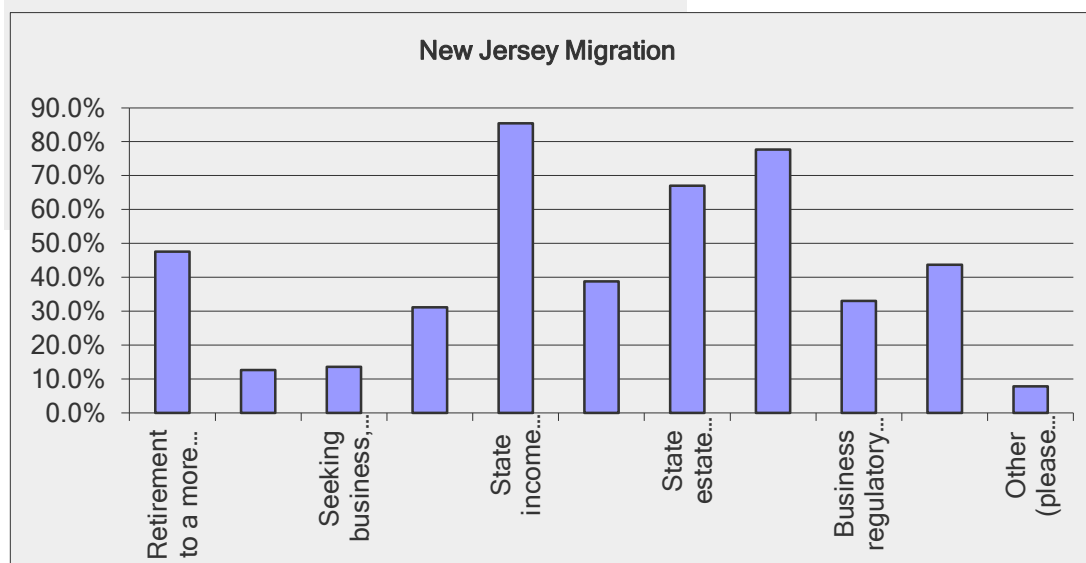
Answer Options	Zero	More than zero, but less than 25%	25% or more, but less than 50%	50% or more, but less than 75%	75% or more, but less than 100%	100%	Response Count	Summary Percentage
\$500,000 or less	10	27	6	5	10	7	65	25.8
More than \$500,000 to \$1,000,000	6	28	18	7	1	4	64	20.5
More than \$1,000,000 to \$5,000,000	7	22	17	17	10	2	75	32.1
More than \$5,000,000	18	31	5	6	7	5	72	21.7
<i>answered question</i>							101	
<i>skipped question</i>							115	



New Jersey Migration: Question 10

Please identify the 5 reasons your clients give most often for relocating from New Jersey (rank 1 as the most important, 2 as the second most important, etc.).

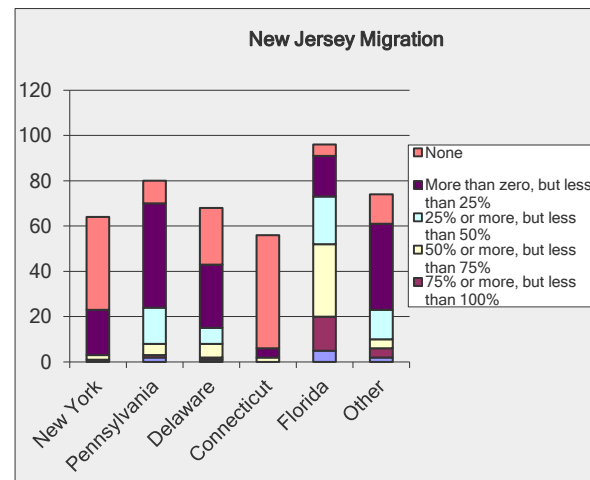
Answer Options	Response Percent	Response Count
Retirement to a more benign climate	47.6%	49
Personal, family ties	12.6%	13
Seeking business, professional opportunities	13.6%	14
Overall quality of life	31.1%	32
State income taxes	85.4%	88
State corporate taxes	38.8%	40
State estate and inheritance taxes	67.0%	69
Local property taxes	77.7%	80
Business regulatory environment	33.0%	34
Housing costs	43.7%	45
Other (please specify)	7.8%	8
<i>answered question</i>		103
<i>skipped question</i>		113



New Jersey Migration: Question 11

Again considering the group identified in Question 6, present, please indicate, by the percentage groupings shown below, client interest in relocating to:

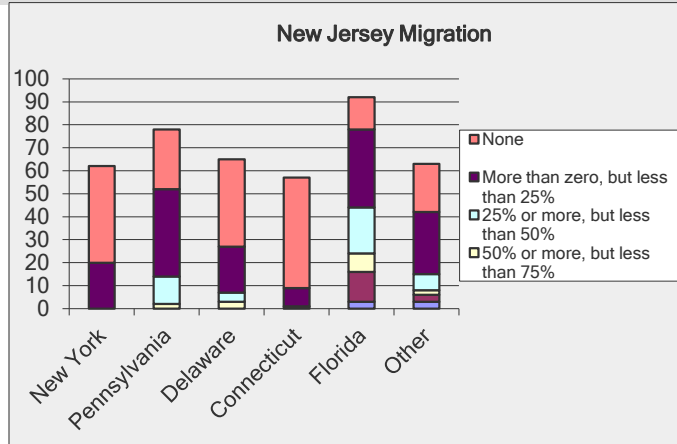
Answer Options	None	More than zero, but less than 25%	25% or more, but less than 50%	50% or more, but less than 75%	75% or more, but less than 100%	100%	Response Count	Summary Percentage
New York	41	20	0	2	1	0	64	4.5
Pennsylvania	10	46	16	5	1	2	80	17.4
Delaware	25	28	7	6	1	1	68	11.5
Connecticut	50	4	0	2	0	0	56	1.7
Florida	5	18	21	32	15	5	96	47.4
Other	13	38	13	4	4	2	74	17.3
Please specify the other states							48	
							<i>answered question</i>	104
							<i>skipped question</i>	112



New Jersey Migration: Question 12

What percentage of this group has relocated to:

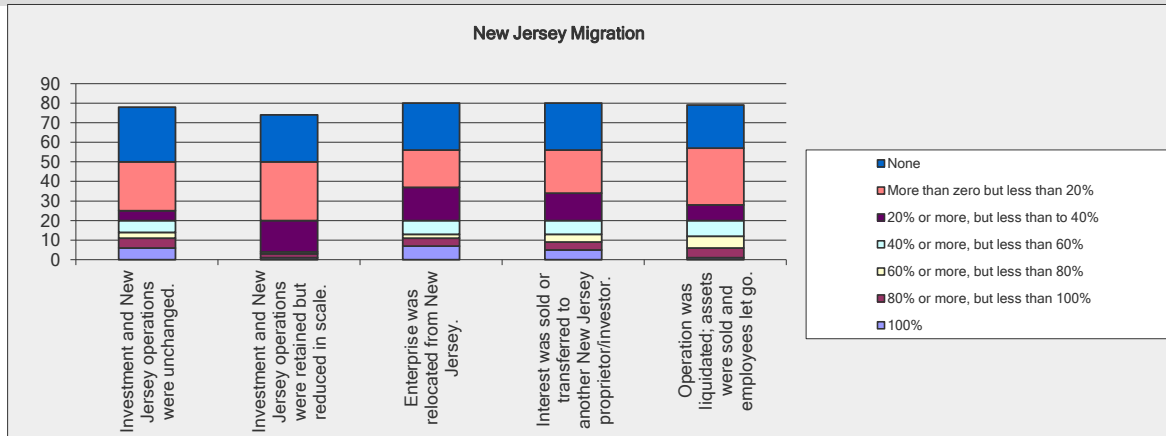
Answer Options	None	More than zero, but less than 25%	25% or more, but less than 50%	50% or more, but less than 75%	75% or more, but less than 100%	100%	Response Count	Summary Percentage
New York	42	20	0	0	0	0	62	3.9
Pennsylvania	26	38	12	2	0	0	78	16.2
Delaware	38	20	4	3	0	0	65	9.1
Connecticut	48	8	0	0	1	0	57	2.9
Florida	14	34	20	8	13	3	92	48.1
Other	21	27	7	2	3	3	63	19.9
Please specify the other states							35	
							<i>answered question</i>	99
							<i>skipped question</i>	117



New Jersey Migration: Question 13

Of your clients with New Jersey business interests who have moved out of state since January 1, 2009, using the scaling shown below, how have those interests changed?

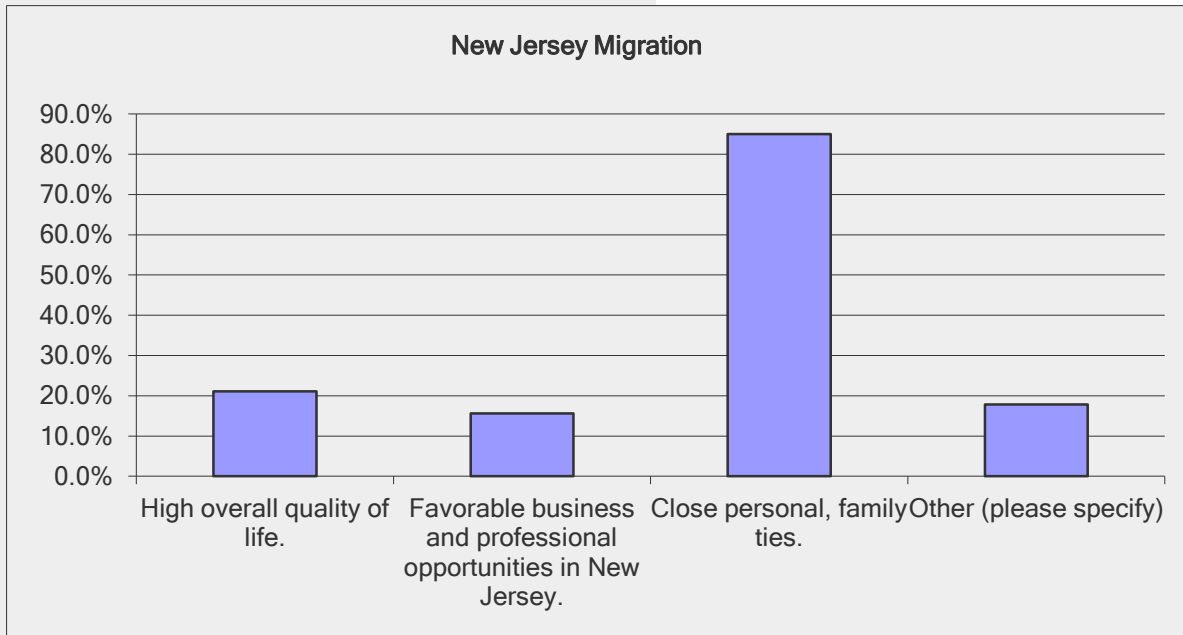
Answer Options	None	More than zero but less than 20%	20% or more, but less than 40%	40% or more, but less than 60%	60% or more, but less than 80%	80% or more, but less than 100%	100%	Response Count	Summary Percentage
Investment and New Jersey operations were unchanged.	28	25	5	6	3	5	6	78	20.9
Investment and New Jersey operations were retained but reduced in scale.	24	30	16	0	1	2	1	74	12.0
Enterprise was relocated from New Jersey.	24	19	17	7	2	4	7	80	23.9
Interest was sold or transferred to another New Jersey proprietor/investor.	24	22	14	7	4	4	5	80	22.7
Operation was liquidated; assets were sold and employees let go.	22	29	8	8	6	5	1	79	20.2
								<i>answered question</i>	94
								<i>skipped question</i>	122



New Jersey Migration: Question 14

Why do your clients remain in, or choose to move to, New Jersey? (please chose no more than 2)

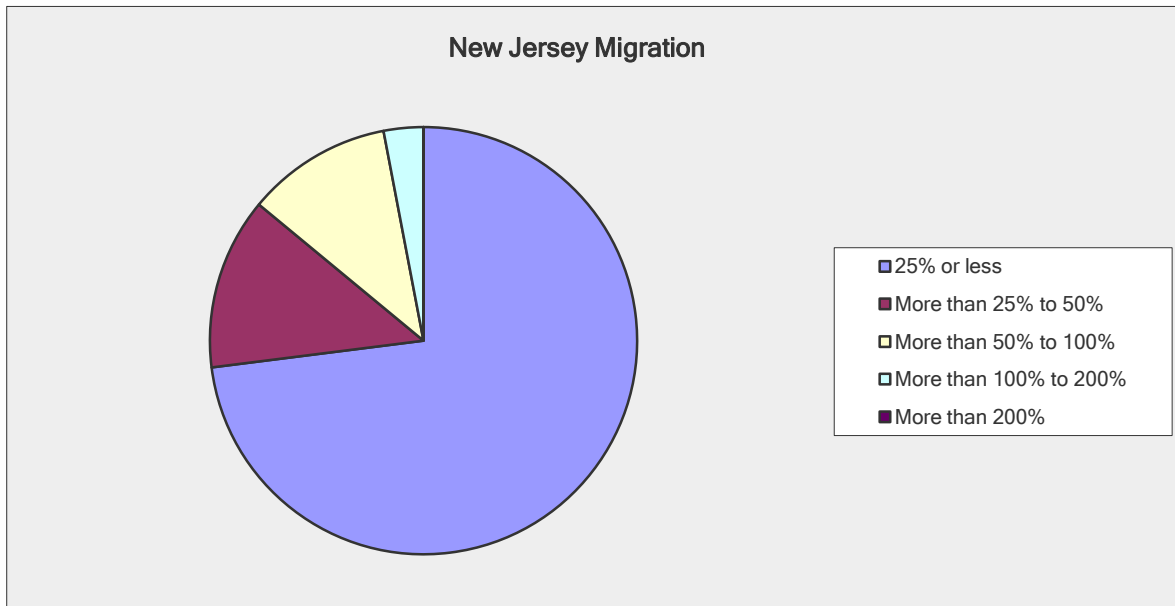
Answer Options	Response Percent	Response Count
High overall quality of life.	21.1%	38
Favorable business and professional opportunities in	15.6%	28
Close personal, family ties.	85.0%	153
Other (please specify)	17.8%	32
<i>answered question</i>		180
<i>skipped question</i>		36



New Jersey Migration: Question 15

How does the number of clients relocating to New Jersey since January 1, 2009 compare to the number who have moved from New Jersey in that period? ("25% or less" means that at least four clients have moved out of state for every one that has moved in, etc.). If no new clients have relocated to New Jersey in this period, please skip to Question 19.

Answer Options	Response Percent	Response Count
25% or less	73.0%	73
More than 25% to 50%	13.0%	13
More than 50% to 100%	11.0%	11
More than 100% to 200%	3.0%	3
More than 200%	0.0%	0
<i>answered question</i>		100
<i>skipped question</i>		116

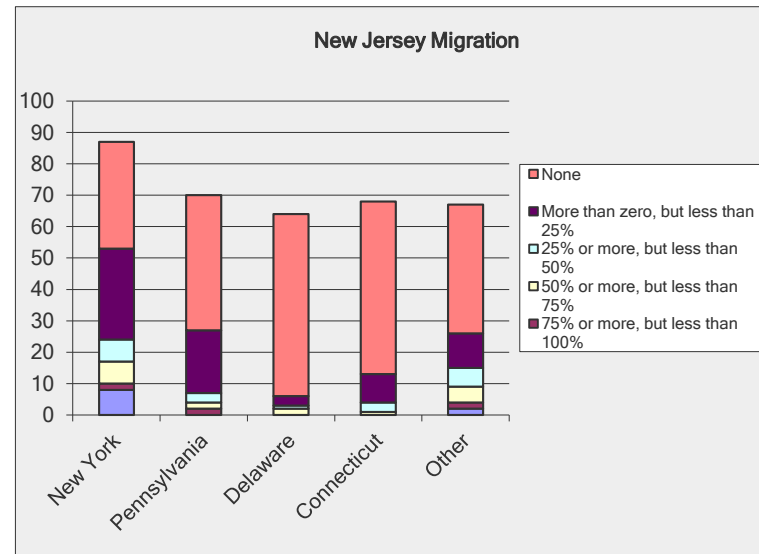


New Jersey Migration: Question 16

Now consider your clients who have relocated to New Jersey in the period beginning January 1, 2009 to the present. Please identify, using the percentage groupings as shown below, those clients coming from:

Answer Options	None	More than zero, but less than 25%	25% or more, but less than 50%	50% or more, but less than 75%	75% or more, but less than 100%	100%	Response Count	Summary Percentage
New York	34	29	7	7	2	8	87	48.1
Pennsylvania	43	20	3	2	2	0	70	15.6
Delaware	58	3	1	2	0	0	64	4.7
Connecticut	55	9	3	1	0	0	68	6.8
Other	41	11	6	5	2	2	67	24.8
Please indicate the other states							19	
							<i>answered question</i>	97
							<i>skipped question</i>	119

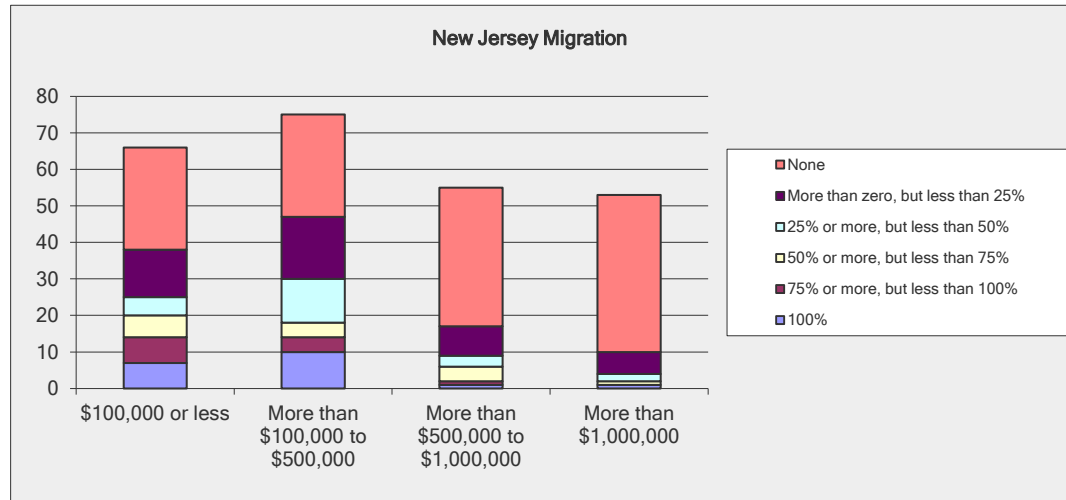
Please indicate the other states	Categories
California, Connecticut.	
Massachusetts	
South Carolina, California	
California	
Washington DC, Virginia	
Texas, California	
Maryland	
Maryland, Florida, North Carolina	
California, Arizona	
Texas, California	
Massachusetts, Vermont, North Carolina	
Florida, North Carolina	
Ohio, Virginia, Michigan	
Missouri, North Carolina	
Massachusetts	
California, Connecticut.	
Washington DC, California	



New Jersey Migration: Question 17

What is the percentage breakdown of household income of your clients who have relocated to New Jersey since January 1, 2009?

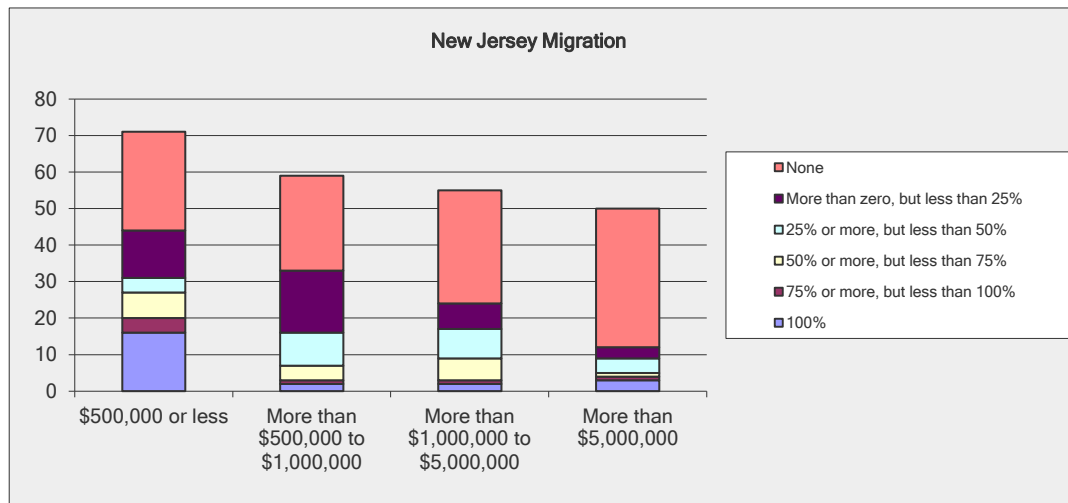
Answer Options	None	More than zero, but less than 25%	25% or more, but less than 50%	50% or more, but less than 75%	75% or more, but less than 100%	100%	Response Count	Summary Percentage
\$100,000 or less	28	13	5	6	7	7	66	38.7
More than \$100,000 to \$500,000	28	17	12	4	4	10	75	43.0
More than \$500,000 to \$1,000,000	38	8	3	4	1	1	55	12.4
More than \$1,000,000	43	6	2	1	0	1	53	5.9
							<i>answered question</i>	91
							<i>skipped question</i>	125



New Jersey Migration: Question 18

What is the percentage breakdown of household net worth in this group?

Answer Options	None	More than zero, but less than 25%	25% or more, but less than 50%	50% or more, but less than 75%	75% or more, but less than 100%	100%	Response Count	Summary Percentage
\$500,000 or less	27	13	4	7	4	16	71	49.3
More than \$500,000 to \$1,000,000	26	17	9	4	1	2	59	19.9
More than \$1,000,000 to \$5,000,000	31	7	8	6	1	2	55	19.2
More than \$5,000,000	38	3	4	1	1	3	50	11.6
							<i>answered question</i>	88
							<i>skipped question</i>	128



New Jersey Migration: Question 19

What is the percentage of this group with active ownership interests in New Jersey business(es)? (please do not take into account share-holdings in publically-traded		
Answer Options	Response Percent	Response Count
None	40.6%	54
More than zero, but less than 25%	31.6%	42
25% or more, but less than 50%	9.0%	12
50% or more, but less than 75%	8.3%	11
75% or more, but less than 100%	5.3%	7
100%	5.3%	7
<i>answered question</i>		133
<i>skipped question</i>		83

0.0
 3.9
 3.4
 5.2
 4.6
 5.3

(percentage of group having New Jersey ownership interests)
 22.4

