



TABLE OF CONTENTS

ACTIVITY TABLES - VARIOUS COLORS	1
ACTIVITY TABLES – GRAY NEBULA, WITH COLOR LEGS & MOLDING	2
FRUITABLES™ - JUVENILE ACTIVITY TABLES	3
SOLID PLYWOOD ACTIVITY TABLES	4
PEDESTAL LEG ACTIVITY TABLES	5
JUVENILE LIBRARY DESKS AND TABLES	6
GAMEBOARD - CENTER PEDESTAL TABLE	7
STUDY CARRELS	8
OPTIONAL EQUIPMENT	9
SCIENCE TABLES - BLACK LAMINATE	10
SCIENCE TABLES - CHEMICAL RESISTANT BLACK LAMINATE	10
SCIENCE TABLES - SOLID PHENOLIC RESIN TOPS	11
SCIENCE TABLES - SOLID EPOXY TOPS	11
ENDURAEDGE™ CHEMICAL RESISTANT LAMINATE SCIENCE TABLE	12
BUDGET SCIENCE TABLE - CHEMICAL RESISTANT LAMINATE	12
LIBRARY TABLES	13
FOLDING SEMINAR TABLES	14
TWO STUDENT DESKS	14
FOLDING TABLES – PLYWOOD, WITH LACQUERED EDGE	15
FOLDING TABLES – WOOD GRAIN COLORS, WITH T-MOLD EDGE	16
FOLDING TABLES – PRIMARY COLORS, WITH T-MOLD EDGE	17
FOLDING TABLES – PLYWOOD, WITH VINYL T-MOLD EDGE	18
ALL PURPOSE UTILITY TABLES	19
ART TABLES	20
FOLDING BENCHES	20
PLANNER TABLES	21
CAFE, LUNCHROOM AND OFFICE TABLES	21

F500 SERIES
1-1/8" THICK PARTICLEBOARD
ACTIVITY TABLES

MODEL #	QUICK SHIP	UPS / LTL	SIZE	QUANTITY PACKED PER CTN	WEIGHT PER TABLE	PRICE PER TABLE
F52436	QS	UPS	24X36	2	45	\$ 123.00
F52448	QS	UPS	24X48	2	55	\$ 144.00
F52460		LTL	24X60	2	65	\$ 155.00
F53048	QS	LTL	30X48	2	65	\$ 155.00
F53060	QS	LTL	30X60	2	80	\$ 170.00
F53072	QS	LTL	30X72	1	95	\$ 193.00
F53660	QS	LTL	36X60	1	95	\$ 198.00
F53672	QS	LTL	36X72	1	110	\$ 228.00
F54260		LTL	42X60	1	100	\$ 259.00
F536CR	QS	LTL	36"CIRCLE	2	45	\$ 132.00
F542CR	QS	LTL	42"CIRCLE	2	65	\$ 170.00
F548CR	QS	LTL	48"CIRCLE	2	80	\$ 191.00
F560CR	QS	LTL	60"CIRCLE	1	120	\$ 261.00
F548HX		LTL	48"HEXAGON	2	80	\$ 200.00
F548OT		LTL	48"OCTAGON	2	80	\$ 200.00
F5472K	QS	LTL	48X72 KIDNEY	1	115	\$ 256.00
F5496K	QS	LTL	48X96 KIDNEY	1	145	\$ 337.00
F5666H	QS	LTL	60X66 HORSESHOE	1	120	\$ 402.00
F53636	QS	LTL	36X36	2	60	\$ 137.00
F54242		LTL	42X42	2	70	\$ 172.00
F54848		LTL	48X48	2	95	\$ 193.00
F548HR	QS	UPS	24X48 HALF ROUND	2	45	\$ 123.00
F524TP	QS	UPS	24X24X48 TRAPEZOID	2	45	\$ 123.00
F530TP	QS	LTL	30X30X60 TRAPEZOID	2	55	\$ 151.00
F540TP		LTL	40X40X80 TRAPEZOID	1	90	\$ 299.00
F548TP		LTL	48X48X96 TRAPEZOID	1	115	\$ 339.00
F548CL		LTL	48"CLOVER	2	80	\$ 203.00
F560FL		LTL	60"FLOWER	1	120	\$ 285.00

- 1.) COLORS AVAILABLE: HIGH PRESSURE LAMINATE - WALNUT, LT. OAK, TEAK, FUSION MAPLE, GREY NEBULA, RED, BLUE, YELLOW, GREEN AND WHITE.
- 2.) ALL PRICES INCLUDE: BLACK UPPERS WITH CHROME INSERTS.
ADJUSTABLE LEGS 20.5" TO 29.5" - STANDARD HEIGHT .
- 3.) FOR LOW RANGE LEGS SPECIFY 15" TO 24.5 " TABLE HEIGHT ON THE PURCHASE ORDER.
- 4.) ADD: \$7.00 FOR BROKEN CARTON CHARGE.
- 5.) ADD 15% FOR WHITE MARKERBOARD LAMINATE (WHMB SUFFIX)
- 6.) ADD: \$23.00 FOR WHEELCHAIR HEIGHT 26.5" TO 35.5" TABLE HEIGHT
- 7.) ADD: \$12.00 FOR FULLY CHROMED LEGS
- 8.) QS = QUICK SHIP - WALNUT AND LT OAK ONLY - SHIPS IN 5 DAYS
- 9.) ALL PRICES ARE: F.O.B. JACKSONVILLE, FLORIDA 32206 / FREIGHT CLASS 70



**F600 SERIES
1-1/8" THICK PARTICLEBOARD
JUVENILE ACTIVITY TABLES**

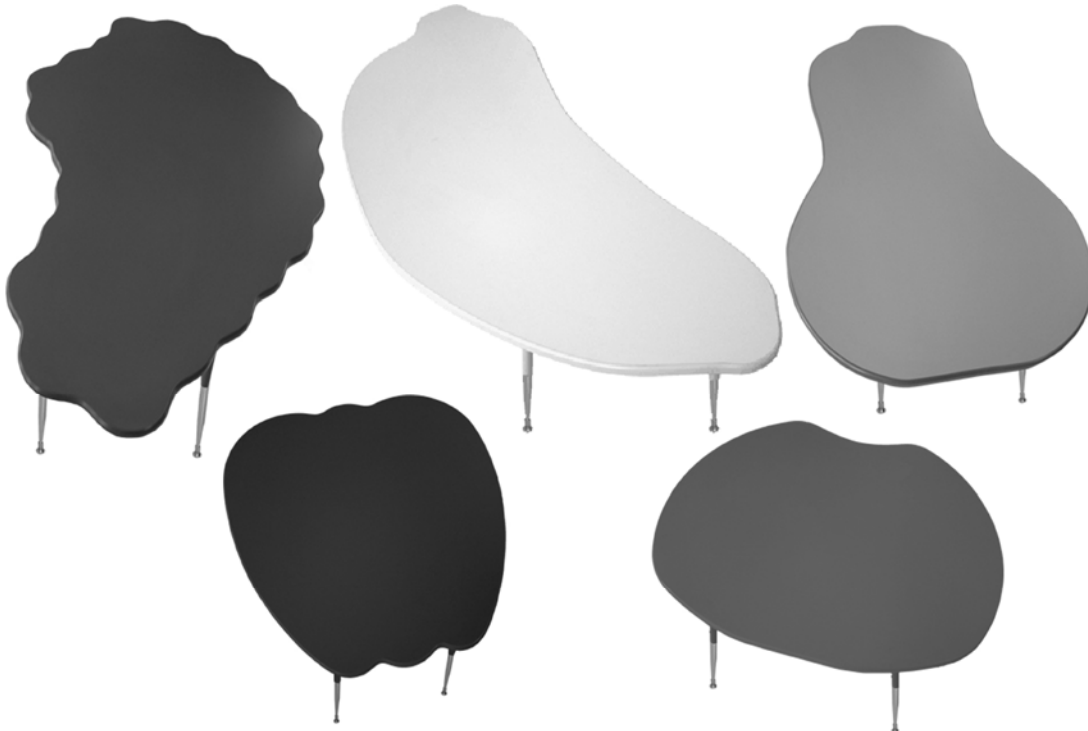
MODEL #	UPS/ LTL	SIZE	QUANTITY PACKED PER CTN	WEIGHT PER TABLE	PRICE PER TABLE
F61832	UPS	18X32	2	35	\$ 118.00
F61836	UPS	18X36	2	40	\$ 118.00
F62436	UPS	24X36	2	45	\$ 156.00
F62442	UPS	24X42	2	50	\$ 167.00
F62448	UPS	24X48	2	55	\$ 179.00
F62460	LTL	24X60	2	65	\$ 191.00
F63030	UPS	30X30	2	45	\$ 177.00
F63036	UPS	30X36	2	50	\$ 179.00
F63048	LTL	30X48	2	65	\$ 205.00
F63060	LTL	30X60	2	80	\$ 212.00
F63072	LTL	30X72	1	95	\$ 240.00
F63636	LTL	36X36	2	60	\$ 179.00
F63648	LTL	36X48	2	70	\$ 200.00
F63672	LTL	36X72	1	110	\$ 271.00
F64260	LTL	42X60	1	100	\$ 271.00
F636CR	LTL	36"CIRCLE	2	45	\$ 184.00
F642CR	LTL	42"CIRCLE	2	65	\$ 221.00
F648CR	LTL	48"CIRCLE	2	80	\$ 240.00
F648CL	LTL	48"CLOVER	2	80	\$ 245.00
F648HX	LTL	48"HEXAGON	2	80	\$ 254.00
F648OT	LTL	48"OCTAGON	2	80	\$ 254.00
F660CR	LTL	60"CIRCLE	1	120	\$ 309.00
F660FL	LTL	60"FLOWER	1	120	\$ 327.00
F624TP	UPS	24X24X48 TRAPEZOID	2	45	\$ 158.00
F630TP	LTL	30X30X60 TRAPEZOID	2	55	\$ 186.00
F6472K	LTL	48X72 KIDNEY	1	115	\$ 315.00
F6496K	LTL	48X96 KIDNEY	1	145	\$ 445.00
F6666H	LTL	60X66 HORSESHOE	1	120	\$ 409.00
F648HR	UPS	24X48 HALF ROUND	2	45	\$ 153.00

- 1.) TOPS: SURFACED WITH A GREY NEBULA HIGH PRESSURE LAMINATE.
- 2.) EDGE COLORS: RED, NAVY, YELLOW, BURGUNDY, TEAL, GREEN, PRIMARY BLUE AND PURPLE.
- 3.) ADD: \$7.00 FOR BROKEN CARTON CHARGE.
- 4.) ADJUSTABLE LEGS: STANDARD 20.5" TO 29.5" TABLE HEIGHT. UPPERS ON LEGS MATCH VINYL EDGING.
- 5.) FOR LOW RANGE LEG SPECIFY 15" TO 24.5" TABLE HEIGHT ON THE PURCHASE ORDER.
- 6.) ADD: \$23.00 FOR WHEELCHAIR HEIGHT - 26.5" TO 35.5" TABLE HEIGHT.
- 7.) DESIGNATE EDGE COLOR BY ADDING THE FOLLOWING SYMBOLS TO THE END OF THE MODEL NUMBER.
RED = RD / NAVY = BL / YELLOW = YL / BURGUNDY = BU / TEAL = TE
GREEN = GN / PRIMARY BLUE = CB / PURPLE = PU.
- 8.) ALL PRICES ARE: F.O.B. JACKSONVILLE, FLORIDA 32206 / FREIGHT CLASS 70



**FRUITABLE SERIES
JUVENILE ACTIVITY TABLES
1-1/8" THICK PARTICLEBOARD**

MODEL #		UPS/ LTL	SIZE	QUANTITY PACKED PER CTN	WEIGHT PER TABLE	PRICE PER TABLE
F6372	BANANA	LTL	30X72	1	73	\$ 219.00
F6360	PEAR	LTL	36X60	1	74	\$ 214.00
F648	APPLE	LTL	48X48	1	79	\$ 210.00
F6472	GRAPE	LTL	48X72	1	108	\$ 287.00
F6460	GRAPE	LTL	42X60	1	102	\$ 271.00
F660	TOMATO	LTL	60X60	1	107	\$ 294.00
F642	TOMATO	LTL	42X42	1	68	\$ 203.00



- 1.) TOPS: PREMIUM QUALITY, SMOOTH SURFACE, STAIN RESISTANT HIGH PRESSURE LAMINATE.
- 2.) TABLE COLORS: APPLE / BURGUNDY, TOMATO / RED, BANANA / YELLOW, GRAPES / PURPLE, PEAR / TEAL
- 3.) ADD: \$7.00 FOR BROKEN CARTON CHARGE.
- 4.) ADJUSTABLE LEGS: STANDARD 20.5" TO 29.5" TABLE HEIGHT. UPPERS ON LEGS MATCH VINYL EDGING.
- 5.) FOR LOW RANGE LEGS SPECIFY 15" TO 24.5" TABLE HEIGHT ON THE PURCHASE ORDER (LR).
- 6.) ADD: \$23.00 FOR WHEELCHAIR HEIGHT - 26.5" TO 35.5" TABLE HEIGHT.
- 7.) ALL PRICES ARE: F.O.B. JACKSONVILLE, FLORIDA 32206 / FREIGHT CLASS 70

ALLIED PLASTICS HAS A CONTINUOUS PRODUCT IMPROVEMENT PROGRAM AND RESERVES THE RIGHT TO MAKE CHANGES IN PRODUCT DESIGN, DETAILS, OR CONSTRUCTION TECHNIQUES, AND TO DISCONTINUE ANY PRODUCT WITHOUT NOTICE.

P500 SERIES
1-1/8" THICK SOLID PLYWOOD LAMINATED ACTIVITY TABLES

MODEL #	UPS / LTL	SIZE	QUANTITY PACKED PER CTN	WEIGHT PER TABLE	PRICE PER TABLE
P52436	UPS	24X36	2	40	\$ 261.00
P52448	UPS	24X48	2	50	\$ 278.00
P53048	LTL	30X48	2	55	\$ 320.00
P53060	LTL	30X60	2	70	\$ 369.00
P53072	LTL	30X72	2	85	\$ 402.00
P53660	LTL	36X60	2	85	\$ 402.00
P53672	LTL	36X72	2	100	\$ 454.00
P536CR	LTL	36" CIRCLE	2	40	\$ 318.00
P542CR	LTL	42" CIRCLE	2	50	\$ 360.00
P548CR	LTL	48" CIRCLE	2	70	\$ 438.00
P5472K	LTL	48X72 KIDNEY	1	85	\$ 586.00
P53636	LTL	36X36	2	50	\$ 586.00
P54242	LTL	42X42	2	60	\$ 346.00
P54848	LTL	48X48	2	80	\$ 395.00
P524TP	UPS	24X24X48 TRAPEZOID	2	35	\$ 268.00
P530TP	LTL	30X30X60 TRAPEZOID	2	50	\$ 322.00
P548HR	UPS	24X48 HALF ROUND	2	35	\$ 250.00

- | | |
|-------------------------|---|
| 1.) COLORS AVAILABLE: | HIGH PRESSURE LAMINATE - WALNUT, LT OAK. TEAK AND FUSION MAPLE. |
| 2.) ALL PRICES INCLUDE: | FULLY CHROMED ADJUSTABLE LEGS 20.5" TO 29.5" TABLE HEIGHT. |
| 3.) FOR LOW RANGE LEGS: | SPECIFY 15" TO 24.5" TABLE HEIGHT ON THE PURCHASE ORDER. |
| 4.) ADD: | \$7.00 FOR BROKEN CARTON CHARGE. |
| 5.) ADD: | \$23.00 FOR WHEELCHAIR HEIGHT - 26.5" TO 35.5" TABLE HEIGHT. |
| 6.) ALL PRICES ARE: | F.O.B. JACKSONVILLE, FLORIDA 32206 / FREIGHT CLASS 70 |



P53672

**T5 SERIES
ACTIVITY TABLES
1-1/8" THICK PARTICLEBOARD
ADJUSTABLE PEDESTALS**

MODEL #	SIZE	UPS / LTL	QUANTITY PACKED PER CTN	WEIGHT PER TABLE	PRICE PER TABLE
T52036	20X36	UPS	2	50	\$ 172.00
T52448	24X48	UPS	2	65	\$ 188.00
T53060	30X60	LTL	2	85	\$ 247.00
T53072	30X72	LTL	2	100	\$ 268.00
T53672	36X72	LTL	1	115	\$ 278.00
T530TP	30X30X60 TRAPEZOID	LTL	2	65	\$ 221.00

- 1.) TOPS: 1-1/8" THICK HIGH DENSITY PARTICLEBOARD
- 2.) COLORS AVAILABLE: HIGH PRESSURE LAMINATE - WALNUT, LT. OAK, TEAK, FUSION MAPLE, GREY NEBULA, RED, BLUE, YELLOW, GREEN AND WHITE.
- 3.) PEDESTALS ARE: ADJUSTABLE 22.75" TO 30.75" TABLE HEIGHT WITH BLACK UPPERS AND CHROME INSERTS ONLY.
- 4.) ADD \$43.00 FOR SET OF (4) CASTERS - (2 LOCKING, 2 STANDARD)
- 5.) ADD: \$7.00 FOR BROKEN CARTON CHARGES.
- 6.) ALL PRICES ARE: F.O.B. JACKSONVILLE, FL 32206 / FRT CLASS 70



T53072

**JD SERIES
JUVENILE LIBRARY DESK AND TABLES**

MODEL #	UPS / LTL	SIZE	QUANTITY PACKED PER CTN	WEIGHT PER TABLE	PRICE PER TABLE
JD2026	UPS	20X26	1	30	\$ 163.00
JD2436	UPS	24X36	1	40	\$ 179.00
JD3048	LTL	30X48	1	50	\$ 259.00
JD30CR	LTL	30"CIRCLE	1	35	\$ 177.00
JD36CR	LTL	36"CIRCLE	1	40	\$ 233.00

- 1.) STANDARD COLORS: HIGH PRESSURE LAMINATED - COLOR - LT. OAK
- 2.) TOPS ARE: 3/4" PARTICLEBOARD WITH A HIGH PRESSURE LAMINATE SURFACE
- 3.) EDGES: PROTECTIVE VINYL T-MOLD
- 4.) APRONS: 3" X 3/4" SOLID HARDWOOD
- 5.) LEGS: 1-3/4" SQUARE HARDWOOD WITH ADJUSTABLE GLIDES.
- 6.) HEIGHTS AVAILABLE: 18", 20", 22" AND 24" TABLE HEIGHT - MUST SPECIFY ON PURCHASE ORDER
- 7.) ADD: \$15.00 FOR LEGS OF 16", OR HIGHER THAN 24", UP TO A MAXIMUM 29.5" TABLE HEIGHT
- NOTE: MAXIMUM TABLE HEIGHT IS 29.5"
- 8.) ALL PRICES ARE: F.O.B. JACKSONVILLE, FLORIDA 32206 / FREIGHT CLASS 70



ALLIED PLASTICS HAS A CONTINUOUS PRODUCT IMPROVEMENT PROGRAM AND RESERVES THE RIGHT TO MAKE CHANG IN PRODUCT DESIGN, DETAILS, OR CONSTRUCTION TECHNIQUES, AND TO DISCONTINUE ANY PRODUCT WITHOUT NOTIC

GB SERIES
***** 1-1/8" THICK - PARTICLE BOARD *****
GAME TABLE

MODEL #	COLOR	SIZE	QUANTITY PACKED PER CTN	WEIGHT PER TABLE	PRICE PER TABLE
503636GB	GAMEBOARD	36X36	1	85	\$ 334.00

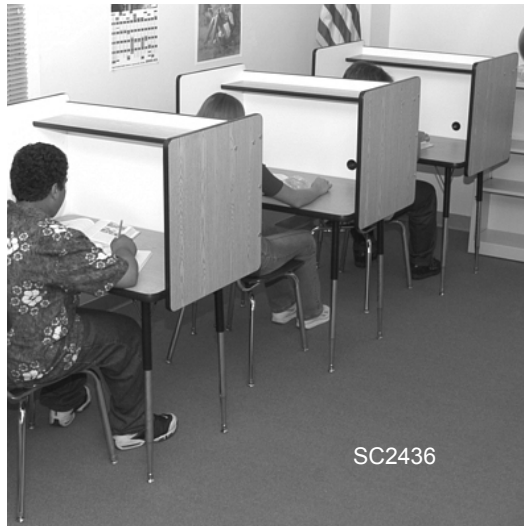
- 2.) TOP: 1-1/8" THICK - HIGH-PRESSURE LAMINATED GAMEBOARD PATTERN ON A MAPLE BACKGROUND
 2.) HEIGHT:
 MODEL - 503636GB STANDARD CENTER COLUMN 30" TABLE HEIGHT
 OPTIONAL ADD \$24.00 WHEELCHAIR HEIGHT 34" TABLE HEIGHT
 OPTIONAL ADD \$24.00 BAR HEIGHT 40" TABLE HEIGHT
 3.) ALL PRICES ARE: F.O.B. JACKSONVILLE, FLORIDA 32206 / FREIGHT CLASS 70



503636GB

SC SERIES
STUDY CARRELS

Model #	Size	Packed	Weight Per	Price
		Per Carto	Carrel	
SC2436	24X36	1	105	\$ 140.00



- 1.) COLORS AVAILABLE: OAK, WALNUT, GREY NEBULA
- 2.) INSIDE COLOR: WHITE
- 3.) 1 GROMMET HOLE: STANDARD
- 4.) SHELF DIMENSION: 8" DEEP BY 36" WIDE
- 5.) HEIGHT ADJUSTMENT: RANGE IS 20.5" TO 29.5"
- 6.) ADD FOR T-LEGS: \$59.00 - ADD SUFFIX LP45 TO MODEL NUMBER
- 7.) PRICE IS: F.O.B. JACKSONVILLE, FL 32206 / FREIGHT CLASS 70

SX SERIES
"CONVERT-A-TABLE"
STUDY CARRELS

Model #	Size	Packed	Weight Per	Price
		Per Carto	Carrel	
SX48CR UPS	FITS 48" ROUND TABLES	1	33	\$ 153.00
SX3072 UPS	FITS 30" X 72" RECTANGULAR TABLES	1	43	\$ 217.00

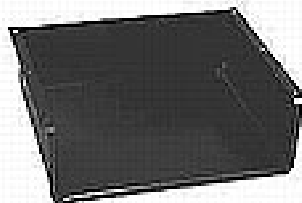
- 1.) Colors Available: RED, BLUE, GREEN, YELLOW, LT. OAK AND GREY NEBULA
- 2.) Construction: HIGH-PRESSURE LAMINATED PANELS OF 3/4" PARTICLE BOARD WITH TOUGH BLACK VINYL T-MOLD EDGES FOR SAFETY
- 3.) Measurements: SX48CR MEASURES 48"W X 48"L X 12"H
 SX3072 MEASURES 30"W X 72"L X 12"H
- 4.) All Prices Are: F.O.B. JACKSONVILLE, FLORIDA 32206 / FREIGHT CLASS 70



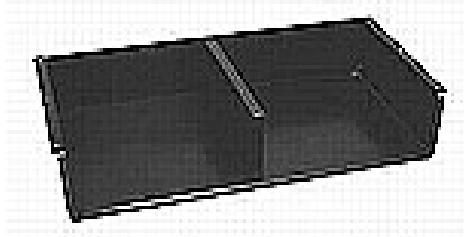
ALLIED PLASTICS HAS A CONTINUOUS PRODUCT IMPROVEMENT PROGRAM AND RESERVES THE RIGHT TO MAKE CHANGES IN PRODUCT DESIGN, DETAILS, OR CONSTRUCTION TECHNIQUES, AND TO DISCONTINUE ANY PRODUCT WITHOUT NOTICE.

OPTIONAL EQUIPMENT

Model #	Description	Weight	Price Per Table
TT14	14" TOTE TRAY RUNNER	2# Per Pair	\$ 9.00
TT17	17" TOTE TRAY RUNNER	3# Per Pair	\$ 11.00
BB1	SINGLE BOOK BOX 15"X12"X4-3/4"	8# Each	\$ 33.00
BB2	DOUBLE BOOK BOX 26"X12"X4-3/4"	10# Each	\$ 38.00



Single Book Box



Double Book Box

WIRE MANAGEMENT PANELS

Model #	Description	Weight	Price
WMCBK36	FOR 36" LENGTH TABLES	5 Lbs.	\$ 123.00
WMCBK48	FOR 48" LENGTH TABLES	8 Lbs.	\$ 130.00
WMCBK60	FOR 60" LENGTH TABLES	10 Lbs.	\$ 144.00
WMCBK72	FOR 72" LENGTH TABLES	12 Lbs.	\$ 158.00
WMCBK80	FOR 80" TARPEZOIDAL TABLES	15 Lbs.	\$ 191.00

- 1.) AVAILABLE IN BLACK ONLY
- 2.) PANEL IS 7" HIGH
- 3.) WIRE STORAGE CHANNEL IS 3" WIDE BY 2" HIGH
- 4.) WIRE MANagements ASSEMBLE TO TABLE WITH NEW SURELOCK MECHANISM
- 5.) ALL PRICES ARE F.O.B. JACKSONVILLE, FLORIDA 32206 / FREIGHT CLASS 70

Wire Management Panel



ALLIED PLASTICS HAS A CONTINUOUS PRODUCT IMPROVEMENT PROGRAM AND RESERVES THE RIGHT TO MAKE CHANGES IN PRODUCT DESIGN, DETAILS, OR CONSTRUCTION TECHNIQUES, AND TO DISCONTINUE ANY PRODUCT WITHOUT NOTICE.

**BS-BK SERIES
SCIENCE TABLES
HIGH-PRESSURE LAMINATE TOP**

MODEL #	SIZE	QUANTITY PACKED PER CTN	WEIGHT PER TABLE	PRICE PER TABLE
BS2448BK	24X48	1	75	\$ 344.00
BS2454BK	24X54	1	85	\$ 376.00
BS2460BK	24X60	1	90	\$ 376.00
BS2472BK	24X72	1	105	\$ 395.00
BS3060BK	30X60	1	110	\$ 395.00
BS3072BK	30X72	1	120	\$ 426.00
BS4260BK	42X60	1	140	\$ 456.00
BS4272BK	42X72	1	170	\$ 534.00

- 1.) TOPS ARE STANDARD: 1-1/8" THICK, WITH A HIGH-PRESSURE BLACK LAMINATE SURFACE
- 2.) BLACK BOOTS: STANDARD
- 3.) ADD: \$57.00 FOR TWO BOOK COMPARTMENTS (ADD "BB" TO THE END OF THE MODEL NUMBER LISTED ABOVE) .
- 4.) ADD: \$52.00 FOR LEGS OTHER THAN STANDARD 29.5" HEIGHT UP TO 35.75" TABLE HEIGHT.
- 5.) ADD: \$12.00 FOR ADJUSTABLE GLIDES.
- 6.) APRONS AND LEGS ARE: SOLID HARDWOOD
- 7.) EDGES HAVE: BLACK VINYL BULLNOSE T-MOLDING.
- 8.) ALL PRICES ARE: F.O.B. JACKSONVILLE, FLORIDA 32206 / FREIGHT CLASS 70



**BS-BA SERIES
SCIENCE TABLES
CHEMICAL RESISTANT, HIGH-PRESSURE LAMINATE TOP**

MODEL #	SIZE	QUANTITY PACKED PER CTN	WEIGHT PER TABLE	PRICE PER TABLE
BS2448BA	24X48	1	75	\$ 393.00
BS2454BA	24X54	1	85	\$ 435.00
BS2460BA	24X60	1	90	\$ 435.00
BS2472BA	24X72	1	105	\$ 466.00
BS3060BA	30X60	1	110	\$ 470.00
BS3072BA	30X72	1	120	\$ 513.00
BS4260BA	42X60	1	140	\$ 555.00
BS4272BA	42X72	1	170	\$ 642.00

- 1.) TOPS ARE STANDARD: 1-1/8" THICK, WITH A BLACK CHEMICAL RESISTANT HIGH PRESSURE LAMINATE SURFACE.
- 2.) BLACK BOOTS: STANDARD
- 3.) ADD: \$57.00 FOR TWO BOOK COMPARTMENTS (ADD "BB" TO THE END OF THE MODEL NUMBER LISTED ABOVE) .
- 4.) ADD: \$52.00 FOR LEGS OTHER THAN STANDARD 29.5" HEIGHT UP TO 35.75" TABLE HEIGHT.
- 5.) ADD: \$12.00 FOR ADJUSTABLE GLIDES.
- 6.) APRONS AND LEGS ARE: SOLID HARDWOOD
- 7.) EDGES HAVE: BLACK VINYL BULLNOSE T-MOLDING.
- 8.) ALL PRICES ARE: F.O.B. JACKSONVILLE, FLORIDA 32206 / FREIGHT CLASS 70



BS-PH SERIES
SCIENCE TABLES
CHEMICAL RESISTANT "TRESPA" TOP LAB PLUS
SOLID PHENOLIC RESIN TOP

MODEL #	SIZE	QUANTITY PACKED PER CTN	WEIGHT PER TABLE	PRICE PER TABLE
BS2448PH	24X48	1	140	\$ 494.00
BS2454PH	24X54	1	160	\$ 564.00
BS2460PH	24X60	1	170	\$ 609.00
BS2472PH	24X72	1	180	\$ 792.00
BS3060PH	30X60	1	185	\$ 729.00
BS3072PH	30X72	1	210	\$ 814.00
BS4260PH	42X60	1	245	\$ 1,016.00

- 1.) TOPS ARE STANDARD: 3/4" THICK, CHEMICAL RESISTANT "TRESPA" TOP LAB PLUS SOLID PHENOLIC RESIN.
- 2.) BLACK BOOTS: STANDARD
- 3.) ADD: \$57.00 FOR TWO BOOK COMPARTMENT (ADD "BB" TO THE END OF THE MODEL NUMBER LISTED ABOVE) .
- 4.) ADD: \$52.00 FOR LEGS OTHER THAN STANDARD 29" HEIGHT UP TO 35.25" TABLE HEIGHT.
- 5.) ADD: \$12.00 FOR ADJUSTABLE GLIDES.
- 6.) APRONS AND LEGS ARE SOLID HARDWOOD
- 7.) EDGES: RADIUS CORNERS, BEVELED EDGES
- 8.) ALL PRICES ARE: F.O.B. JACKSONVILLE, FLORIDA 32206 / FREIGHT CLASS 70



BS2460PHBB

BS-EP SERIES
SCIENCE TABLES
CHEMICAL RESISTANT SOLID EPOXY RESIN TOP

MODEL #	SIZE	QUANTITY PACKED PER CTN	WEIGHT PER TABLE	PRICE PER TABLE
BS2448EP	24X48	1	140	\$ 628.00
BS2454EP	24X54	1	160	\$ 687.00
BS2460EP	24X60	1	170	\$ 750.00
BS2472EP	24X72	1	180	\$ 879.00
BS3060EP	30X60	1	185	\$ 901.00
BS3072EP	30X72	1	210	\$ 1,039.00
BS4260EP	42X60	1	275	\$ 1,230.00

- 1.) TOPS ARE: STANDARD 1" THICK CHEMICAL RESISTANT SOLID EPOXY RESIN. 3/4" THICK EPOXY IS AVAILABLE. CALL FOR DETAILS.
- 2.) BLACK BOOTS: STANDARD
- 3.) ADD: \$57.00 FOR BOOK COMPARTMENT (ADD "BB" TO THE END OF THE MODEL NUMBER LISTED ABOVE) .
- 4.) ADD: \$52.00 FOR LEGS OTHER THAN STANDARD 29.75" HEIGHT UP TO 35.5" TABLE HEIGHT.
- 5.) ADD: \$12.00 FOR ADJUSTABLE GLIDES.
- 6.) APRONS AND LEGS ARE SOLID HARDWOOD
- 7.) EDGES: RADIUS CORNERS, BEVELED EDGES
- 8.) ALL PRICES ARE: F.O.B. JACKSONVILLE, FLORIDA 32206 / FREIGHT CLASS 70



BS2460EPBB

ALLIED PLASTICS HAS A CONTINUOUS PRODUCT IMPROVEMENT PROGRAM AND RESERVES THE RIGHT TO MAKE CHANGES IN PRODUCT DESIGN, DETAILS, OR CONSTRUCTION TECHNIQUES, AND TO DISCONTINUE ANY PRODUCT WITHOUT NOTICE.

**BE-BA SERIES
ENDURAEDGE SCIENCE TABLES
HIGH-PRESSURE CHEMICAL RESISTANT LAMINATE TOP**

	UPS / LTL	SIZE	PACKED PER CTN	TABLE WEIGHT	PRICE PER TABLE
BE2448BA	LTL	24X48	1	75	\$ 454.00
BE2454BA	LTL	24X54	1	85	\$ 513.00
BE2460BA	LTL	24X60	1	90	\$ 536.00

- 1.) TOPS ARE STANDARD: 1-1/8" THICK MDF, WITH BLACK HIGH-PRESSURE CHEMSURF CHEMICAL RESISTENT LAMINATE.
- 2.) BLACK BOOTS: STANDARD
- 3.) ENDURAEDGE: POLYURETHANE/POLYUREA BONDED EDGE FOR EXTRAORDINARY EDGE PROTECTION
- 3.) ADD: \$57.00 FOR TWO BOOK COMPARTMENTS (ADD "BB" TO THE END OF THE MODEL NUMBER) .
- 4.) ADD: \$52.00 FOR LEGS OTHER THAN STANDARD 30" HEIGHT UP TO 36" TABLE HEIGHT.
- 5.) ADD: \$12.00 FOR ADJUSTABLE GLIDES.
- 6.) APRONS AND LEGS ARE SOLID HARDWOOD - APRONS 5" X 3/4" , LEGS - 2-1/4" SQUARE
- 7.) ALL PRICES ARE: F.O.B. JACKSONVILLE, FLORIDA 32206 / FREIGHT CLASS 70



BE2460BA

**BUDGET SCIENCE TABLES
CHEMICAL RESISTANT HIGH PRESSURE LAMINATE**

MODEL #	UPS / LTL	SIZE	QUANTITY PACKED PER CTN	WEIGHT PER TABLE	PRICE PER TABLE
802448BABBV	UPS	24X48	1	70	\$ 280.00
802454BABBV	UPS	24X54	1	75	\$ 306.00
802460BABBV	LTL	24X60	1	80	\$ 306.00
802472BABBV	LTL	24X72	1	95	\$ 327.00
803060BABBV	LTL	30X60	1	95	\$ 327.00
803072BABBV	LTL	30X72	1	110	\$ 360.00
804260BABBV	LTL	42X60	1	140	\$ 414.00
804272BABBV	LTL	42X72	1	160	\$ 478.00

- 1.) TOPS: 1-1/8" THICK PARTICLEBOARD WITH CHEMICAL RESISTANT HIGH-PRESSURE LAMINATE
- 2.) EDGE: BLACK VINYL T-MOLDING
- 3.) APRONS: 16 GAUGE STEEL CHANNEL - 3" WIDE WITH DOUBLE FLANGE, PAINTED BLACK.
- 4.) LEGS: 1-1/4" - SQUARE 16 GAUGE - PAINTED BLACK - WITH A PLASTIC INSERT IN THE BOTTOM OF THE LEG TO ACCOMMODATE ADJUSTABLE GLIDES.
- 5.) HEIGHT: 29.5" TABLE HEIGHT
- 6.) ADD: \$52.00 FOR LEGS UP TO 35.75" FINISHED TABLE HEIGHT
- 7.) ALL PRICES ARE: F.O.B. JACKSONVILLE, FLORIDA 32206 FREIGHT CLASS 70



802472BABBV

**LB SERIES
LIBRARY TABLES**

MODEL #	UPS / LTL	SIZE	QUANTITY PACKED PER CTN	WEIGHT PER TABLE	PRICE PER TABLE
LB2048	UPS	20X48	1	40	\$ 250.00
LB2060	UPS	20X60	1	50	\$ 322.00
LB2424	UPS	24X24	1	35	\$ 210.00
LB2436	UPS	24X36	1	40	\$ 240.00
LB2448	UPS	24X48	1	45	\$ 320.00
LB3048	LTL	30X48	1	50	\$ 346.00
LB3060	LTL	30X60	1	60	\$ 381.00
LB3072	LTL	30X72	1	80	\$ 463.00
LB3660	LTL	36X60	1	80	\$ 463.00
LB3672	LTL	36X72	1	95	\$ 515.00
LB36CR	LTL	36"CIRCLE	1	40	\$ 322.00
LB42CR	LTL	42"CIRCLE	1	45	\$ 386.00
LB48CR	LTL	48"CIRCLE	1	55	\$ 475.00

- 1.) STANDARD COLORS: HIGH PRESSURE LAMINATED - LT. OAK OR WALNUT
- 2.) TOPS ARE: 3/4" PLYWOOD WITH A HIGH PRESSURE LAMINATE SURFACE
- 3.) EDGES: LACQUERED BULLNOSE
- 4.) APRONS: 3" X 3/4" SOLID HARDWOOD
- 5.) LEGS: 1-3/4" SQUARE HARDWOOD WITH ADJUSTABLE GLIDES.
- 6.) STANDARD HEIGHT: 29.5" TABLE HEIGHT
- 7.) ADD 10% FOR WHITE MARKERBOARD LAMINATE (WHMB SUFFIX)
- 8.) ADD: \$15.00 FOR LEGS OTHER THAN 29.5" TABLE HEIGHT
- NOTE: MAXIMUM TABLE HEIGHT IS 29.5"
MINIMUM TABLE HEIGHT IS 16"
- 9.) ALL PRICES ARE: F.O.B. JACKSONVILLE, FLORIDA 32206 / FREIGHT CLASS 70



LB36CR



LB2448

F9 SERIES
***** 3/4" THICK - PARTICLE BOARD *****
FOLDING SEMINAR TABLES

MODEL #	COLOR	SIZE	QUANTITY PACKED PER CTN	WEIGHT PER TABLE	PRICE PER TABLE
F92460WABK	WALNUT/BLACK	24X60	1	70	\$ 308.00
F92460TKBK	TEAK/BLACK	24X60	1	70	\$ 308.00
F92490WABK	WALNUT/BLACK	24X90	1	95	\$ 400.00
F92490TKBK	TEAK/BLACK	24X90	1	95	\$ 400.00

- 1.) HEIGHT: STANDARD 29" TABLE HEIG
- 2.) TOP/MODESTY PAN 3/4" THICK - HIGH PRESSURE LAMINATED TOP AND MODESTY PANEL. VINYL BULLNOSE EDGE.
- 3.) STANDARD COLOR: HIGH PRESSURE LAMINATE - WALNUT OR TEAK ONLY.
- 4.) LEGS AND FRAMES BLACK ENAMEL FINISH WITH ADJUSTABLE GLIDES.
- 5.) TABLE HEIGHT: STANDARD HEIGHT - 29.5"
- 6.) ALL PRICES ARE: F.O.B. JACKSONVILLE, FLORIDA 32206 / FREIGHT CLASS



F92460WABK

F700 SERIES
TWO STUDENT DESK

MODEL #	SIZE	QUANTITY PACKED PER CTN	WEIGHT PER TABLE	PRICE PER TABLE
F72448	24X48	1	70	\$235.00

TOP COLORS	COLOR SYMBOL	FRAME COLOR	COLOR SYMBOL
WALNUT	WA	BLACK	BK
TEAK	TK	GRAY	DG
LT OAK	OK	PUTTY	PT
GREY NEBULA	10	BLUE	BL
		RED	RD

- 1.) ABOVE DESKS: ARE SHIPPED KD EXCEPT FOR THE QUICK MOUNT PLATES. MINIMUM EASY ASSEMBLY REQUIRED.
- 2.) TOPS: TOPS ARE 1-1/8" THICK, SURFACED WITH A HIGH-PRESSURE LAMINATE. VINYL BULLNOSE EDGE.
- 3.) DESK HEIGHT: ADJUSTABLE - 20.5" TO 29.5"
- 4.) ALL PRICES ARE: F.O.B. JACKSONVILLE, FLORIDA / FREIGHT CLASS 70



F72448

11000 SERIES
******* 3/4" THICK PLYWOOD*******
LACQUERED EDGE
HIGH PRESSURE LAMINATED FOLDING TABLES

MODEL #	SIZE	QUANTITY PACKED PER CTN	WEIGHT PER TABLE	PRICE PER TABLE
111872	18x72	2	37.5	\$ 181.00
111896	18x96	2	60	\$ 226.00
112448	24x48	2	40	\$ 193.00
112460	24x60	2	45	\$ 207.00
112472	24x72	2	55	\$ 231.00
112496	24x96	2	70	\$ 254.00
113060	30x60	2	55	\$ 231.00
113072	30x72	2	65	\$ 231.00
113096	30x96	1	80	\$ 285.00
113672	36x72	1	70	\$ 285.00
113696	36x96	1	100	\$ 351.00
1148CR	48" CIRCLE	1	60	\$ 294.00
1160CR	60" CIRCLE	1	80	\$ 447.00

- 1.) COLORS AVAILABLE: HIGH PRESSURE LAMINATE - WALNUT, LT. OAK, TEAK AND FUSION MAPLE, GREY NEBULA
- 2.) APRONS AND LEGS: MOCHA BROWN ON ALL WOODGRAINS, GREY ON GREY NEBULA
- 3.) TABLE HEIGHT: FIXED HEIGHT LEGS - 29.5"
- 4.) ADD: \$38.00 FOR ADJUSTABLE LEGS. MUST SPECIFY HIGH OR LOW RANGE ON PURCHASE ORDER (LR) =18.5" TO 28.25" HEIGHT OR (HR) = 23" TO 34.25" HEIGHT.
- 5.) NOTE: HIGHER RANGE LEGS ARE NOT AVAILABE ON THE 18" AND 24" WIDE TABLES.
- 6.) ADD: \$ 10.00 FOR BROKEN CARTON CHARGE.
- 7.) ALL PRICES ARE: F.O.B. JACKSONVILLE, FL 32206 / FREIGHT CLASS 70



113672

ALLIED PLASTICS HAS A CONTINUOUS PRODUCT IMPROVEMENT PROGRAM AND RESERVES THE RIGHT TO MAKE CHANGES IN PRODUCT DESIGN, DETAILS, OR CONSTRUCTION TECHNIQUES, AND TO DISCONTINUE ANY PRODUCT WITHOUT NOTICE.

12000 SERIES
****** 3/4" THICK - PARTICLE BOARD ******
HIGH PRESSURE LAMINATED FOLDING TABLES

MODEL #	SIZE	QUANTITY PACKED PER CTN	WEIGHT PER TABLE	PRICE PER TABLE
121860	18X60	2	35	\$ 153.00
121872	18X72	2	42.5	\$ 158.00
121896	18X96	2	65	\$ 174.00
122448	24X48	2	45	\$ 139.00
122460	24X60	2	50	\$ 170.00
122472	24X72	2	57.5	\$ 172.00
122496	24X96	2	75	\$ 203.00
123060	30X60	2	60	\$ 156.00
123072	30X72	2	70	\$ 170.00
123096	30X96	1	90	\$ 188.00
123672	36X72	1	80	\$ 186.00
123696	36X96	1	110	\$ 231.00
1242CR **	42" CIRCLE WITH ADJUSTABLE LEGS	1	50	\$ 224.00
1248CR	48" CIRCLE	1	65	\$ 203.00
1260CR	60" CIRCLE	1	85	\$ 278.00

- 1.) COLORS AVAILABLE HIGH PRESSURE LAMINATED - WALNUT, LT. OAK, TEAK, FUSION MAPLE AND GREY NEBULA.
- 2.) APRONS AND LEGS: MOCHA BROWN ON ALL WOODGRAINS, GREY ON GREY NEBULA
- 3.) TABLE HEIGHT: FIXED HEIGHT LEGS - 29.5"
- 4.) ADD: \$38.00 FOR ADJUSTABLE LEGS. MUST SPECIFY HIGH OR LOW RANGE ON PURCHASE ORDER.
(LR) = 18.5" TO 28.25" HEIGHT OR (HR) = 23" TO 34.25" HEIGHT
- 5.) NOTE: ** 42" CIRCLE IS ONLY AVAILABLE WITH ADJUSTABLE HEIGHT LEGS AND PRICED ACCORDINGLY ABOVE.
- 5.) NOTE: HIGHER RANGE LEGS ARE NOT AVAILABE ON THE 18" AND 24" WIDE TABLES.
- 6.) ADD: \$ 10.00 FOR BROKEN CARTON CHARGE.
- 7.) ALL PRICES ARE: F.O.B. JACKSONVILLE, FL 32206 / FRT CLASS 70



123672

12000 SERIES
***** 3/4" THICK - PARTICLE BOARD *****
******* SOLID PRIMARY COLORS *******
HIGH PRESSURE LAMINATED FOLDING TABLES

MODEL #	SIZE	QUANTITY PACKED PER CTN	WEIGHT PER TABLE	PRICE PER TABLE
121860	18X60	2	35	\$ 158.00
121872	18X72	2	42.5	\$ 163.00
121896	18X96	2	65	\$ 179.00
122448	24X48	2	45	\$ 144.00
122460	24X60	2	50	\$ 172.00
122472	24X72	2	57.5	\$ 179.00
122496	24X96	2	75	\$ 214.00
123060	30X60	2	60	\$ 158.00
123072	30X72	2	70	\$ 177.00
123096	30X96	1	90	\$ 207.00
123672	36X72	1	80	\$ 203.00
123696	36X96	1	110	\$ 243.00
1242CR **	42" CIRCLE WITH ADJUSTABLE LEGS	1	50	\$ 226.00
1248CR	48" CIRCLE	1	65	\$ 214.00
1260CR	60" CIRCLE	1	85	\$ 287.00

- 1.) COLORS AVAILABLE: HIGH PRESSURE LAMINATE - RED, BLUE, YELLOW, WHITE AND GREEN. VINYL T-MOLD EDGE.
 2.) APRONS AND LEGS: MOCHA BROWN
 3.) TABLE HEIGHT: FIXED HEIGHT LEGS - 29.5"
 4.) ADD: \$38.00 FOR ADJUSTABLE LEGS. MUST SPECIFY HIGH OR LOW RANGE ON PURCHASE ORDER.
 (LR) = 18.5" TO 28.25" HEIGHT OR (HR) = 23" TO 34.25" HEIGHT
 5.) NOTE: ** 42" CIRCLE IS ONLY AVAILABLE WITH ADJUSTABLE HEIGHT LEGS AND PRICED ACCORDINGLY ABOVE.
 5.) NOTE: HIGHER RANGE LEGS ARE NOT AVAILABE ON THE 18" AND 24" WIDE TABLES.
 6.) ADD: \$ 10.00 FOR BROKEN CARTON CHARGE.
 7.) ALL PRICES ARE: F.O.B. JACKSONVILLE, FL 32206 / FRT CLASS 70



1260CR
SHOWN WITH LOW RANGE ADJUSTABLE LEGS

13000 SERIES
******* 3/4" THICK PLYWOOD *******
VINYL EDGE
HIGH PRESSURE LAMINATED FOLDING TABLES

MODEL #	SIZE	QUANTITY PACKED PER CTN	WEIGHT PER TABLE	PRICE PER TABLE
131872	18X72	2	37.5	\$ 179.00
131896	18X96	2	60	\$ 226.00
132448	24X48	2	40	\$ 193.00
132460	24X60	2	45	\$ 207.00
132472	24X72	2	55	\$ 231.00
132496	24X96	2	70	\$ 254.00
133060	30X60	2	55	\$ 231.00
133072	30X72	2	65	\$ 231.00
133096	30X96	1	80	\$ 290.00
133672	36X72	1	70	\$ 285.00
133696	36X96	1	100	\$ 348.00
1348CR	48" CIRCLE	1	60	\$ 294.00
1360CR	60" CIRCLE	1	80	\$ 449.00

- 1.) COLORS AVAILABLE: HIGH PRESSURE LAMINATE - WALNUT, LT. OAK, TEAK, FUSION MAPLE, GREY NEBULA AND GREY NEBULA. VINYL T-MOLD EDGE.
- 2.) APRONS AND LEGS: MOCHA BROWN ON ALL WOODGRAINS, GREY ON GREY NEBULA
- 3.) TABLE HEIGHT: FIXED HEIGHT LEGS - 29.5"
- 4.) ADD: 38.00 FOR ADJUSTABLE LEGS. MUST SPECIFY HIGH OR LOW RANGE ON PURCHASE ORDER.
(LR) = 18.5" TO 28.25" HEIGHT OR (HR) = 23" TO 34.25"
- 5.) NOTE: HIGHER RANGE LEGS ARE NOT AVAILABE ON THE 18" AND 24" WIDE TABLES.
- 6.) ADD: \$ 10.00 FOR BROKEN CARTON CHARGE.
- 7.) ALL PRICES ARE: F.O.B. JACKSONVILLE, FL 32206 / FRT CLASS 70



132672

8000 SERIES
***** 1-1/8" THICK PARTICLE BOARD *****
ALL PURPOSE UTILITY TABLES

MODEL #	QUICK SHIP	UPS / LTL	SIZE	QUANTITY PACKED PER CTN	WEIGHT PER TABLE	PRICE PER TABLE
801848		UPS	18X48	1	55	\$ 196.00
801860		UPS	18X60	1	70	\$ 203.00
801872		LTL	18X72	1	85	\$ 231.00
802040	QS	UPS	20X40	1	50	\$ 193.00
802054		UPS	20X54	1	65	\$ 210.00
802060	QS	UPS	20X60	1	75	\$ 210.00
802448		UPS	24X48	1	70	\$ 205.00
802454		UPS	24X54	1	75	\$ 210.00
802460		LTL	24X60	1	80	\$ 219.00
802472		LTL	24X72	1	95	\$ 250.00
803048	QS	LTL	30X48	1	80	\$ 214.00
803060	QS	LTL	30X60	1	95	\$ 240.00
803072		LTL	30X72	1	110	\$ 290.00
803096		LTL	30X96	1	140	\$ 416.00
803672	QS	LTL	36X72	1	120	\$ 322.00
803696		LTL	36X96	1	160	\$ 470.00
803636		LTL	36X36	1	70	\$ 219.00
804848		LTL	48X48	1	100	\$ 355.00
8036CR		LTL	36" CIRCLE	1	70	\$ 226.00
8048CR		LTL	48" CIRCLE	1	90	\$ 358.00
8060CR		LTL	60" CIRCLE	1	140	\$ 478.00

COLORS AVAILABLE:
APRON COLORS:
LEGS:
ADD:
COLORS SYMBOLS:

HIGH PRESSURE LAMINATE - WALNUT, LT. OAK AND GREY NEBULA
BLACK, PUTTY AND GRAY
FULLY CHROMED - FINISHED STANDARD TABLE HEIGHT IS 29.5"
\$52.00 FOR FINISHED TABLE HEIGHT UP TO 35.5"
WABC = WALNUT/ BLACK / CHROME
OKPC = LT OAK/ PUTTY / CHROME
10GC = GREY NEBULA / GRAY / CHROME
QUICK SHIP - SHIPS IN 5 DAYS
1-1/4" SQUARE CHROMED LEGS
F.O.B. JACKSONVILLE, FLORIDA 32206 / FREIGHT CLASS 70

- 1.) QS =
- 2.) LEGS:
- 3.) ALL PRICES ARE:



802448



803060

**AT SERIES
ART / CUTTING TABLE**

MODEL #	QUICK SHIP	UPS / LTL	SIZE	QUANTITY PACKED PER CTN	WEIGHT PER TABLE	PRICE PER TABLE
AT3060FM		LTL	30X60 LAMINATED TOP	1	125	\$ 602.00
AT4260FM	QS	LTL	42X60 LAMINATED TOP	1	139	\$ 703.00
AT4272FM	QS	LTL	42X72 LAMINATED TOP	1	150	\$ 823.00
AT4260SW	QS	LTL	42X60 1-3/4" SOLID HARDWOOD TOP	1	164	\$ 1,164.00
AT4272SW	QS	LTL	42X72 1-3/4" SOLID HARDWOOD TOP	1	180	\$ 1,307.00

TOPS: A. HIGH PRESSURE FUSION MAPLE LAMINATE ON 1-1/8" PARTICLEBOARD WITH MATCHING WOODGRAIN VINYL "T" MOLD EDGE (FM)
B. OTHER HIGH PRESSURE LAMINATE COLORS ARE AVAILABLE UPON REQUEST (WB) CALL FOR DETAILS.
C. SOLID HARDWOOD 1-3/4" THICK (SW)

ENDURAEDGE: ADD \$118.00 TO WB PRICE TO SUBSTITUTE POLYURETHANE-POLYUREA EDGE COATING FOR T-MOLDING

FRAMES/LEGS: SOLID HARDWOOD BASE WITH MORTISE / TENON BOLT AND BARREL REINFORCED JOINT CONNECTION.

ASSEMBLY: BASE ASSEMBLES TO LAMINATED TOP WITH MACHINE SCREWS WHICH TIGHTEN INTO PRE-INSTALLED TEE-NUTS.

HEIGHT: 30" TABLE HEIGHT - STANDARD

OPTIONAL: 26" TABLE HEIGHT AVAILABLE - ADD AN "LR" TO THE END OF THE MODEL NUMBER.

QUICK SHIP: SHIPS IN 5 DAYS OR LESS

SHIPS: K/D - FREIGHT CLASS 70

ALL PRICES ARE: F.O.B. JACKSONVILLE, FLORIDA 32206



AT4260SW

**15000 SERIES
*** 3/4" THICK - PARTICLE BOARD ***
HIGH PRESSURE LAMINATED
FOLDING BENCHES**

MODEL #	SIZE	QUANTITY PACKED PER CTN	WEIGHT PER BENCH	PRICE PER TABLE
121572	15X72	2	60	\$123.00
121596	15X96	2	70	\$149.00

- 1.) COLORS: WALNUT, LT. OAK, TEAK, BIRCH AND GREY NEBULA.
- 2.) BENCH HEIGHT: FINISHED BENCH HEIGHT IS 17.75"
- 2.) APRONS AND LEGS: MOCHA BROWN
- 3.) ADD: \$ 10.00 FOR BROKEN CARTON CHARGE.
- 4.) ALL PRICES ARE: F.O.B. JACKSONVILLE, FL 32206 / FREIGHT CLASS 70

ALLIED PLASTICS HAS A CONTINUOUS PRODUCT IMPROVEMENT PROGRAM AND RESERVES THE RIGHT TO MAKE CHANGES IN PRODUCT DESIGN, DETAILS, OR CONSTRUCTION TECHNIQUES, AND TO DISCONTINUE ANY PRODUCT WITHOUT NOTICE.

K5 PLANNER TABLE
1-1/8" THICK PARTICLEBOARD

MODEL #	UPS / LTL	SIZE	QUANTITY PACKED PER CTN	WEIGHT PER TABLE	PRICE PER TABLE
K52448	LTL	24X48	1	80	\$ 320.00
K53048	LTL	30X48	1	95	\$ 332.00
K53060	LTL	30X60	1	110	\$ 369.00
K53072	LTL	30X72	1	125	\$ 416.00
K53672	LTL	36X72	1	145	\$ 440.00
K548CR	LTL	48" CIRCLE	1	90	\$ 388.00

STANDARD COLORS: GREY NEBU A HIGH PRESSURE LAMINAT
 NAVY MOLDING / NAVY FRAMES OR
 LT OAK / BLACK MOLDING / BLACK FRAM
 ADJUSTABILIT 23.5" TO 33.5" TABLE HEIGHT - ADA COMPATIB
 OPTIONS: 29.5" FIXED TABLE HEIGHT - MUST BE SPECIFI
 ON THE PURCHASE ORDER.
 ALL PRICES ARE: F.O.B. JACKSONVILLE, FLORIDA 32206
 FREIGHT CLASS 70



TB SERIES
1-1/8" THICK PARTICLEBOARD
LUNCHROOM AND OFFICE TABLES

MODEL #	UPS / LTL	QUICK SHIP	SIZE	QUANTITY PACKED PER CTN	WEIGHT PER TABLE	PRICE PER TABLE
TB2424	UPS	QS	24X24	2	37	\$ 139.00
TB2430	UPS	QS	24X30	2	40	\$ 156.00
TB2442	UPS	QS	24X42	2	57	\$ 193.00
TB3030	UPS	QS	30X30	2	49	\$ 167.00
TB3042	LTL	QS	30X42	2	66	\$ 238.00
TB3636	LTL	QS	36X36	2	70	\$ 238.00
TB3048	LTL	QS	30X48	2	80	\$ 297.00
TB3060	LTL		30X60 **	2	105	\$ 353.00
TB3072	LTL		30X72 **	1	120	\$ 365.00
TB3096	LTL		30X96 ***	1	165	\$ 426.00
TB3660	LTL		36X60 **	2	105	\$ 372.00
TB3672	LTL		36X72 **	1	120	\$ 426.00
TB3696	LTL		36X96 **	1	165	\$ 569.00
TB24CR	UPS	QS	24" CIRCLE	2	32	\$ 139.00
TB30CR	UPS	QS	30" CIRCLE	2	35	\$ 167.00
TB36CR	LTL	QS	36" CIRCLE	2	50	\$ 238.00
TB42CR	LTL	QS	42" CIRCLE	2	65	\$ 257.00
TB48CR	LTL	QS	48" CIRCLE	2	90	\$ 348.00

LEGEND: ** = TABLES USE (2) BASES *** = TABLES USE (3) BASES QS = SHIPS IN 5 DAYS ARO
 1.) COLORS: WALNUT AND LT OAK
 2.) EDGE: BROWN VINYL T-MOLDING
 3.) COLUMN: BLACK OR CHROME
 (MUST SPECIFY ON PURCHASE ORDER)
 4.) ADD: \$ 10.00 FOR BROKEN CARTON CHARGE
 5.) ADD: \$29.00 FOR BAR HEIGHT COLUMNS
 6.) ADD: \$29.00 FOR ROUND BASES FOR THE
 24" TO 30" ROUND OR SQUARE TOPS
 7.) ADD: \$33.00 FOR ROUND BASES FOR THE
 36" TO 48" ROUND OR SQUARE TOPS
 8.) ALL PRICES ARE: F.O.B. JACKSONVILLE, FLORIDA 32206 FREIGHT CLASS 70

ALLIED PLASTICS HAS A CONTINUOUS PRODUCT IMPROVEMENT PROGRAM AND RESERVES THE RIGHT TO MAKE CHANGES
 IN PRODUCT DESIGN, DETAILS, OR CONSTRUCTION TECHNIQUES, AND TO DISCONTINUE ANY PRODUCT WITHOUT NOTICE.

**M500 SERIES
1-1/8" THICK PARTICLEBOARD
MARKERBOARD ACTIVITY TABLES**

MODEL #	QUICK SHIP	UPS / LTL	SIZE	QUANTITY PACKED PER CTN	WEIGHT PER TABLE	PRICE PER TABLE
M52436		UPS	24X36	2	45	\$ 141.00
M52448		UPS	24X48	2	55	\$ 165.00
M52460		LTL	24X60	2	65	\$ 179.00
M53048		LTL	30X48	2	65	\$ 186.00
M53060		LTL	30X60	2	80	\$ 214.00
M53072		LTL	30X72	1	95	\$ 231.00
M53660		LTL	36X60	1	95	\$ 237.00
M53672		LTL	36X72	1	110	\$ 273.00
M54260		LTL	42X60	1	100	\$ 299.00
M536CR		LTL	36"CIRCLE	2	45	\$ 158.00
M542CR		LTL	42"CIRCLE	2	65	\$ 202.00
M548CR		LTL	48"CIRCLE	2	80	\$ 219.00
M548HX		LTL	48"HEXAGON	2	80	\$ 231.00
M548OT		LTL	48"OCTAGON	2	80	\$ 231.00
M5472K		LTL	48X72 KIDNEY	1	115	\$ 322.00
M5496K		LTL	48X96 KIDNEY	1	145	\$ 388.00
M53636		LTL	36X36	2	60	\$ 165.00
M54242		LTL	42X42	2	70	\$ 207.00
M54848		LTL	48X48	2	95	\$ 221.00
M548HR		UPS	24X48 HALF ROUND	2	45	\$ 141.00
M524TP		UPS	24X24X48 TRAPEZOID	2	45	\$ 141.00
M530TP		LTL	30X30X60 TRAPEZOID	2	55	\$ 193.00
M548CL		LTL	48"CLOVER	2	80	\$ 233.00



M53072

- 1.) COLORS AVAILABLE: HIGH PRESSURE LAMINATE - MARKERBOARD DRY-ERASE WRITE ON / WIPE OFF
BLACK VINYL T-MOLD EDGE
- 2.) ALL PRICES INCLUDE: BLACK UPPERS WITH CHROME INSERTS.
ADJUSTABLE LEGS 20.5" TO 29.5" - STANDARD HEIGHT .
- 3.) FOR LOW RANGE LEGS SPECIFY 15" TO 24.5 " TABLE HEIGHT ON THE PURCHASE ORDER.
- 4.) ADD: \$5.00 FOR BROKEN CARTON CHARGE.
- 5.) ADD 25% FOR ENDURAEDGE EDGE GUARD COATING - BLACK ONLY - PREFIX ME
- 6.) ADD: \$24.00 FOR WHEELCHAIR HEIGHT 26.5" TO 35.5" TABLE HEIGHT
- 7.) ADD: \$12.00 FOR FULLY CHROMED LEGS
- 8.) ALL PRICES ARE: F.O.B. JACKSONVILLE, FLORIDA 32206 / FREIGHT CLASS 70

CHANGES
NOTICE.