

Final/Accepted Fee Proposal

ORIGINAL

PROFESSIONAL SERVICES FEE PROPOSAL DIVISION OF PROPERTY MANAGEMENT & CONSTRUCTION

THIS FEE PROPOSAL TO BE RETURNED
IN A SEPARATELY SEALED ENVELOPE TO:

Division of Property Management & Construction
33 WEST STATE ST 9TH FLOOR, PLAN ROOM
P.O. Box 034
Trenton, NJ 08625-0034
Attention: SHAWN TAYLOR

DATE: September 11, 2018
PROJECT NO.: P1187-00

RECEIVED
2018 SEP 20 A 10 07
TREASURY DIV
PROCUREMENT

THIS PROPOSAL DUE DATE, NO LATER THAN 2:00 PM, TUESDAY, SEPTEMBER 11, 2018

FIRM NAME AECOM Technical Services

THE UNDERSIGNED PROPOSES TO PROVIDE ALL PROFESSIONAL SERVICES AS STATED
IN THE REQUEST FOR PROPOSAL AND SCOPE OF WORK

| | CONSULTANT FEES | SUB-CONSULTANT FEES |
|--|-----------------|---------------------|
| BACKGROUND RESEARCH/FIELDWORK | \$ \$53,117.76 | \$ \$0.00 |
| SUBMISSION OF DRAFT PRODUCT | \$ \$177,856.72 | \$ \$0.00 |
| SUBMISSION OF FINAL PRODUCT | \$ \$7,760.08 | \$ \$0.00 |
| PROJECT CLOSE-OUT PHASE | \$ \$1,190.96 | \$ \$0.00 |
| ALLOWANCE FOR WORK SPECIFIED BY THE CONSULTANT | \$ \$0.00 | \$ \$0.00 |
| TOTALS | \$ \$239,925.52 | \$ \$0.00 |
| TOTAL CONTRACT AMOUNT | \$ \$239,925.52 | |

PROPOSAL TO HOLD GOOD FOR 60 DAYS AFTER THE DUE DATE.

Signature and Title of Principle or Individual of the firm authorized to sign contractual documents:

Signature of the consultant below attests that the Consultant has read, understands and agrees to all terms, conditions and specifications set forth in the Request for Proposal (RFP) and Consultant Proposal Package.

Signature: Stephen W. Tull Print Name: STEPHEN W. TULL

Title: VICE PRESIDENT Date: 9/11/18

Witness Signature: Emily P. Everett Print Name: Emily P. Everett

ATTACH PROOF OF REQUIRED INSURANCE COVERAGE

See attached requirements per "General Conditions to Consultant Agreement" Section 27, pp. 18-19

PROFESSIONAL LIABILITY INSURANCE

(\$100,000 MIN LIMIT/\$25,000 MAX DEDUCTIBLE)

Final/Accepted Fee Proposal

ORIGINAL

CONSULTANT TASK/LABOR/FEE SHEET A/E: AECOM Technical Services

Project # P1187-00

Project Name: Intensive-Level Architectural Survey

Project Location: Hoboken Historic District

Hoboken, Hudson County, NJ

| PROJECT PHASE OR TASK | CONSULTANTS LEVEL OF EFFORT IN HOURS/FEE | | | | | | | | REPROD. COST | TOTALS |
|-----------------------------------|--|--------|--------|------------|-------------|--------------|-------------|--------|-----------------------------|--------------------|
| | LEVEL | 7 | 6 | 5 | 4 | 3 | 2 | 1 | PER PHASE INCLUD | PER TASK |
| | *HOURLY RATE | \$ | \$ | \$117.98 | \$98.00 | \$67.50 | \$47.52 | \$ | SUB CONSULTANT DOCUMENTS | HOURS \$ AMOUNT |
| BACKGROUND RESEARCH/ FIELDWORK | HOURS | 0 | 0 | 12 | 125 | 400 | 100 | 0 | | 637 |
| | AMOUNT | \$0.00 | \$0.00 | \$1,415.76 | \$12,250.00 | \$27,000.00 | \$4,752.00 | \$0.00 | \$7,700.00 | \$53,117.76 |
| SUBMISSION OF DRAFT PRODUCT | HOURS | 0 | 0 | 64 | 290 | 1700 | 550 | 0 | | 2604 |
| | AMOUNT | \$0.00 | \$0.00 | \$7,550.72 | \$28,420.00 | \$114,750.00 | \$26,136.00 | \$0.00 | \$1,000.00 | \$177,856.72 |
| SUBMISSION OF FINAL PRODUCT | HOURS | 0 | 0 | 4 | 6 | 64 | 8 | 0 | | 82 |
| | AMOUNT | \$0.00 | \$0.00 | \$471.92 | \$588.00 | \$4,320.00 | \$380.16 | \$0.00 | \$2,000.00 | \$7,760.08 |
| PROJECT CLOSE-OUT PHASE | HOURS | 0 | 0 | 2 | 0 | 8 | 0 | 0 | | 10 |
| | AMOUNT | \$0.00 | \$0.00 | \$235.96 | \$0.00 | \$540.00 | \$0.00 | \$0.00 | \$415.00 | \$1,190.96 |
| TOTAL | HOURS | 0 | 0 | 83 | 487 | 2278 | 719 | 0 | | 3567 |
| | AMOUNT | \$0.00 | \$0.00 | \$9,674.36 | \$41,258.00 | \$146,610.00 | \$31,268.16 | \$0.00 | \$11,115.00 | \$239,925.52 |
| PROFESSIONAL SERVICES | | | | | | | | | HOURS | 3567 |
| GRAND TOTALS | | | | | | | | | AMOUNT | \$239,925.52 |



TECHNICAL PROPOSAL

Intensive-Level Architectural Survey
Hoboken Historic District (P1187-00)

Submitted to:
State of New Jersey Department of Treasury
Division of Property Management and Construction

11 September 2018

AECOM Imagine it.
Delivered.

Prepared for:

State of New Jersey, Department of Treasury
Division of Property Management and Construction
33 West State Street
9th Floor, Plan Room
PO Box 043
Trenton, NJ 08625-0034

Prepared by:

AECOM
Northeast Region, Cultural Resources Department
The Historic Preservation Group
437 High Street
Burlington
NJ, 08016
T: 1-609-386-5444

Copyright © 2018 by AECOM

All rights reserved. No part of this copyrighted work may be reproduced, distributed, or transmitted in any form or by any means without the prior written permission of AECOM.

Cover Image. *City of Hoboken, New Jersey 1904*. Hughes & Bailey. Library of Congress, Geography and Map Division, <https://www.loc.gov/item/75694727>.

Table of Contents

Cover Letter

| | |
|--|----|
| Table of Contents | 3 |
| A Firm Profile + Experience | 1 |
| B Organization Chart..... | 6 |
| C Key Team Members Summary..... | 7 |
| D Key Team Members Project Experience Data Sheet | 10 |
| E Project Key Personnel List | 12 |
| F Project Approach | 22 |
| G Project Schedule | 27 |
| H Certificate of Employee Information Report | 29 |
| I Certification of Public Law 2005, Chapter 92 | 30 |

| | |
|------------|--------------------------|
| Appendix A | Key Staff Resumes |
| Appendix B | Project Fact Sheets |
| Appendix C | Additional Documentation |

September 11, 2018

Reference
P1187-00

Shawn Taylor
Department of Treasury
Division of Property Management and Construction
Contracts & Procurement Unit
33 West State Street, 9th Floor, Plan Room
PO Box 304
Trenton, NJ 08625

Subject: Intensive-Level Architectural Survey, Hoboken Historic District, City of Hoboken, Hudson County, NJ

Dear Mr. Taylor:

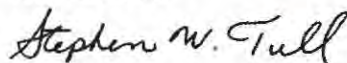
The Historic Preservation Group at AECOM Technical Services, Inc. (AECOM) is pleased to submit this proposal to complete the Intensive-Level Architectural Survey of the Hoboken Historic District in the City of Hoboken, New Jersey for the New Jersey Department of Treasury, Division of Property Management and Construction (DPMC). The Historic Preservation Group embodies the full range of experience required to successfully complete this vital project. We specialize in complex large-scale surveys, architectural survey form production, and data management. Our highly-skilled staff routinely works on both regulatory and planning architectural surveys for State Historic Preservation Offices, local municipalities, the National Park Service, and the Federal Emergency Management Association, among other clients. As such, AECOM is uniquely positioned to handle the complexities of surveying over 1,600 properties in a compressed timeframe while maintaining a comprehensive database that links architectural documentation with geospatial data for future planning and analysis.

In addition, the Historic Preservation Group has been at the forefront of integrating historic preservation into resiliency and hazard mitigation planning. We have surveyed over two thousand historic properties located within flood-prone historic districts, using advanced technology to efficiently record elevation data and assess vulnerability alongside character-defining features. From conducting the first flood vulnerability and historic preservation study for a major US city to serving on disaster response teams, we recognize the importance of identifying vulnerable historic resources in order to plan, mitigate, and preserve in an era of climate change. Based on our recent experience working with the New Jersey Department of Environmental Protection on Hurricane Sandy recovery efforts and subsequent *Rebuild by Design*, and on the pioneering *Disaster Planning for Historic Properties Initiative* for the Pennsylvania State Historic Preservation Office, we understand the value of a historic resource inventory completed prior to major storm events. Our team is ready to assist the State of New Jersey in inventorying Hoboken's historic resources and laying the groundwork for future preservation efforts.

In summary, the Historic Preservation Group at AECOM offers immediately available seasoned staff, extensive regional project experience conducting flood vulnerability assessments in historic communities, and a record of successful collaboration with various State Historic Preservation Offices. As such, our team is confident in our ability to complete this significant task within the necessary timeframe and provide the City of Hoboken and its Historic Preservation Commission with expert analysis and recommendations on New Jersey and National Register eligibility, district boundaries, building typologies, character-defining features, and the effects of flood mitigation and climate change adaptations measures on the character and integrity of its historic districts.

We place a very high value on the opportunity to submit a proposal for this project and assist DPMC in the execution of these tasks. Therefore, you can be sure we will focus on this project and take whatever actions are needed to make certain we exceed your expectations. If you have any questions, please reach out to Sophia Jones, Director of Historic Preservation, at sophia.jones@aecom.com or 609.386.5444 x111.

Yours sincerely,



Stephen W. Tull, MSA, RPA
Vice President

A Firm Profile + Experience

Firm Profile

AECOM Technical Services, Inc.

AECOM is a full-service, multidisciplinary firm with capabilities in all areas of environmental permitting and compliance, transportation planning, engineering, construction, and management. As an integrated component of a full-service engineering firm, our cultural resource specialists have an unparalleled understanding of the needs of state and federal agencies faced with cultural resource compliance issues. With our experience, staff resources, and knowledge of state and federal regulations, we can complete projects quickly, thoroughly, and to the satisfaction of our clients. AECOM first launched in 1990 as an employee-owned company and has since grown into a Fortune 500 company that is one of the largest and most respected providers of professional, technical, and management support services in the world.

The Historic Preservation Group at Burlington

Headquartered in Burlington, New Jersey, the Historic Preservation Group at AECOM-Burlington provides professional and technical support to state and local municipalities and government agencies in the areas of architectural history, history, historic architecture, preservation planning, archaeology, public outreach, and geospatial analysis/GIS. Unlike standard cultural resources management firms, the Historic Preservation Group merges Historic Architecture, Architectural History, Preservation Planning, and GIS expertise under one roof in order to provide effective and impactful assistance to our clients.



Our team specializes in urban architectural investigations that include a diverse range of property types and styles

We are led by a robust management team with an average of 20 years of experience and backgrounds in both the public and private sectors. With over 75 professionals in offices throughout the Mid-Atlantic and Northeast regions, we offer a well-established small firm approach with large firm support. Our staff routinely works on a wide variety of historic preservation, documentation, and revitalization projects for the National Park Service, Federal Emergency Management Administration, the New Jersey, New York, and Pennsylvania State Historic Preservation Offices and Departments of Transportation, and municipalities throughout the Mid-Atlantic region.

Our comprehensive historic preservation services include:

- Historic architectural surveys
- HABS/HAER recordation
- National Register Determinations of Eligibility
- National Register of Historic Places Nominations
- Preservation Plans and Historic Structure Reports
- Assistance with Federal and State Rehabilitation Tax Credit Applications
- Flood Vulnerability Assessments
- Building Condition Assessments
- Adaptive Use and Building Restoration / Rehabilitation Design
- Public Outreach
- Educational and exhibit materials
- Consultation and coordination of National Historic Preservation Act (NHPA) and National Environmental Policy Act (NEPA) requirements and procedures
- Archaeological data recovery programs
- Development of mitigation alternatives

We offer a full range of technical expertise for regulatory compliance projects under Section 106 of the National Historic Preservation Act and related environmental regulations. We have a diverse portfolio of clients and projects that reach across multiple industries including transportation, energy, public utilities, and government. Our staff routinely performs historic architectural surveys and are

experts at evaluating the significance and eligibility of architectural resources using the National Register of Historic Places (NRHP) criteria. We also have extensive experience assessing effects and preparing agreement documents to resolve adverse effects.

Our professionals understand the importance of engaging the public on cultural resource issues and recognize the value of stakeholder input. Each of our professionals has unique educational and professional backgrounds that have combined to give us a keen understanding of resource types in a variety of settings. All Architectural History staff meets the Secretary of the Interior's Professional Qualification Standards for Architectural History, History, or Historic Architecture [36 CFR 61].

Resiliency Planning for Historic Resources

In recent years, the Historic Preservation Group at AECOM has been at the forefront of integrating historic preservation into resiliency and hazard mitigation planning. From conducting the first flood vulnerability and historic preservation study for a major US city to serving on disaster response teams, we recognize the importance of identifying vulnerable historic resources in order to plan, mitigate, and preserve in an era of climate change. Based on our recent experience working with the New Jersey Department of Environmental Protection on Hurricane Sandy recovery efforts and subsequent *Rebuild by Design*, and on the pioneering *Disaster Planning for Historic Properties Initiative* for the Pennsylvania State Historic Preservation Office, we understand the value of a historic resource inventory completed prior to major storm events.



Surveying rowhouses located in a flood-prone historic district

Indeed, having an accurate, up-to-date inventory of historic resources (identified and predicted) in vulnerable areas is the key to building resilience and reducing flood related damage in historic communities.

Key team members have worked on historic preservation and flood vulnerability analyses in rural and urban as well as inland and coastal contexts and have served on FEMA deployments and disaster response teams to assess damage to historic and cultural resources in the aftermath of Superstorm Sandy and Hurricanes Matthew, Irma, and Maria.

Technological and Geospatial Services



AECOM employs tablet technology to efficiently survey historic properties

From field surveyors to geospatial analysts to project leaders, the AECOM team is trained to efficiently process, map, and analyze data as daily geospatial data packages come in from the field, allowing for timely turnaround of survey coverage and results. AECOM utilizes a cloud-based mobile data collection platform for all levels of cultural resource survey to capture geospatial and architectural survey data via LTE/WiFi-enabled Android tablets. This streamlines our data management approach and allows for real-time viewing of survey progress and faster data integration into GIS, report tables, and state survey forms.

Additionally, the use of mobile data collection technology allows for more efficient integration of data into existing State Historic Preservation Office (SHPO) databases. AECOM has extensive experience translating data to fit a wide variety of platforms used by individual SHPOs. Not only does this enable AECOM to meet stringent data submission requirements, it unlocks opportunities for future data interpretation and public outreach using web-based mapping applications.

Firm Experience

Our team embodies the full range of experience required to successfully facilitate the Hoboken Historic District Intensive-Level Architectural Survey project. Our cultural resources staff routinely works on both

regulatory and planning architectural surveys for State Historic Preservation Offices, local municipalities, the National Park Service, and the Federal Emergency Management Association, among other clients. We specialize in intricate, large-scale surveys and architectural survey form production. In addition, our in-house team of qualified Architectural Historians, Preservation Planners, and Historic Architects has extensive experience conducting reconnaissance and intensive-level surveys for submission to the New Jersey Historic Preservation Office (NJ HPO).

AECOM understands the complexities of surveying over 1,600 properties while maintaining a proficient database that links architectural documentation with geospatial data for future analysis. For the purposes of this project, we have compiled five projects that demonstrate our experience working with hundreds of thousands of historic resources. These projects are summarized below.

For detailed Project Sheets on these projects, see **Appendix A**.

[Tappan Zee Bridge Historic Resource Survey](#) **Rockland, Westchester Counties, NY (2002-2011)**

AECOM was retained by the New York State Department of Transportation (NYSDOT) to prepare environmental screening and impact analysis for the Tappan Zee Bridge/I-287 Corridor. The goal of the project was to explore methods to replace the Tappan Zee Bridge, and improve mobility in the I-287 corridor through the potential introduction of highway improvements and mass transit.

AECOM coordinated with the New York State Historic Preservation Office (NYS HPO) and dozens of municipalities within the 30-mile corridor to determine the nature and extent of protected properties near I-287 and the Tappan Zee Bridge. AECOM also assisted NYSDOT in coordinating with NYS SHPO to determine the Tappan Zee Bridge National Register-eligibility, and conducted a reconnaissance survey to identify areas where large clusters of historic properties existed that may be eligible for listing in the National Register. In addition to collecting cultural resources data, AECOM assisted in rating the impact of over 100 alternatives on cultural resources.

During fieldwork, architectural historians documented over 1,900 historic resources over 50 years old on

maps produced using ArcGIS. Each resource was digitally photographed and evaluated according to the National Register Criteria for Historic Significance. 57 of the over 1,900 resources possessed adequate significance and integrity to be recommended eligible for listing in the National Register, and as a result, AECOM intensively surveyed those resources.

AECOM produced a multi-volume report that included a detailed project description and characterization of the 30-mile project area, historic context, methodology, and survey results. AECOM also met with federal, state, and local stakeholders to explain the report findings. The final report documented 57 potentially National Register-eligible resources on Historic Resource Inventory Forms and Historic and Natural Districts Inventory Forms.

[Disaster Planning for Historic Properties Initiative](#) **Multi-County, PA (2015-2018)**

AECOM was contracted by the Pennsylvania State Historic Preservation Office (PA SHPO) to conduct a Historic Resource Survey in Monroe, Bedford, Cameron, and Philadelphia Counties, Pennsylvania for Phase 1 of the Disaster Planning for Historic Properties Initiative pilot project. The project was initiated to assist the counties with updating their state and federally-approved hazard mitigation plans to include historic properties. This project was awarded by the US Department of the Interior, National Park Service and funded by the Disaster Relief Appropriations Act of 2013.

The goal of the \$460,000 project was to gather up-to-date information on historic properties in hazard-affected areas to facilitate more accurate damage assessments and make recommendations on whether the resources surveyed are eligible for listing in the NRHP or are significant as community landmarks, and to assess the vulnerability of each resource to be damaged by a flood event. This survey focused on documenting buildings, structures, objects, and historic districts over 45 years of age within the 100-year and 500-year floodplains that had not been previously documented, but also consisted of updating records for previously surveyed resources that may have changed since they were last surveyed. Flood hazard-specific data was captured for historic properties listed, eligible for listing, and recommended eligible for listing in the NRHP, and for those recommended as community landmarks.

Snapshot: Number of Resources Surveyed in Recent Large-Scale Architectural Surveys



In total, **1,655 historic resources** – newly identified, previously identified, and previously listed on the NRHP – were documented on PA SHPO historic resource survey forms in Phase 1 of the Disaster Planning for Historic Properties Initiative for these four counties. AECOM architectural historians and preservation planners have presented findings from this initiative in PA SHPO guest blog posts and at several conferences, including the 2017 Pennsylvania Statewide Conference on Heritage in Carlisle, Pennsylvania, the international 2017 Keeping History above Water conference in Annapolis, Maryland, and the 2018 Building a Place for History, New Jersey History and Historic Preservation Conference in Paterson, New Jersey.¹ In 2017, the Philadelphia County survey received the Preservation Education Award from the Preservation Alliance for Greater Philadelphia.

In order to efficiently capture data in the field and minimize desktop analysis, AECOM utilized LTE/Wi-Fi-connected hand-held tablets to record property specific information using a web-based application that was custom designed for the project. Since information from the PA SHPO's Cultural Resource Geographic Information System (CRGIS) was pre-loaded into the database, the teams were also able to update physical and locational information of previously recorded resources that was incorrect or had changed since they were last surveyed.

**Sharswood-Blumberg Historic Resources Survey
Philadelphia, PA (2017-Ongoing)**

In 2017, the Philadelphia Housing Authority (PHA) contracted AECOM to serve as their on-call Section 106 consultant in order to satisfy the cultural resource requirements of the Sharswood-Blumberg Neighborhood Transformation Plan. AECOM's Historic Preservation Team was specifically tasked with conducting reconnaissance-level historic architecture survey of all properties in the dense, urban neighborhood, as well as initiating consultation with the PA SHPO, developing Historic Resource Survey Forms for **over 700 resources**, and preparing a reconnaissance-level historic architectural report for review by the PA SHPO.

The \$117,000 project was funded by a US Department of Housing and Urban Development (HUD) Choice Neighborhoods Initiative Planning Grant and driven by the PHA's 2015 *Sharswood-Blumberg Choice Neighborhoods Transformation Plan*, which outlines the strategies for neighborhood revitalization based on a collaborative planning process. The overarching goal of AECOM's work was to gather up-to-date information on historic properties, adequate background and physical information to make recommendations on whether properties over 50 years of age located in close proximity to PHA's revitalization areas are eligible for listing in the NRHP.

AECOM employed the same digital recordation platform used for the Disaster Planning Initiative with a custom-built data collection app to efficiently document a large number of resources in a short period of time – **completing fieldwork for all 700 properties in less than four standard workdays.**

¹ For more information, see <https://pahistoricpreservation.com/disaster-planning-historic-properties-world-heritage-city/> and <https://forum.savingplaces.org/blogs/special-contributor/2017/11/29/keeping-history-above-water-in-annapolis>

The application allowed the teams to toggle between GIS maps and aerial images of the project area and a pre-designed form based on the PA SHPO's required documentation to record important physical information about the properties, including the exact location of the historic buildings and structures on the property. The historic, physical, and spatial data captured during the survey will be packaged into a deliverable specifically suited to PA SHPO's Cultural Resource Geospatial Information System (CRGIS) so that it will be available for future studies. This data was also made available to the client as a dynamic web application to be used for their own planning purposes.

Rebuild By Design: Meadowlands Bergen County, NJ (2017-Ongoing)

Rebuild by Design: Meadowlands is an urban water management strategy designed to reduce the risk of floods from coastal storm surges and/or systemic inland flooding from large rainfall events within the Meadowlands District – an area prone to chronic flooding due to the nature of the landscape, elevation above sea level, complexity of tidal influence, and inadequate stormwater management systems.

The majority of the Project Area (greater than 90 percent) is located within the 100-year floodplain of the Hackensack River and has been severely impacted by three major hurricanes since 1999. The most recent of these, Hurricane Sandy, significantly impacted the Project Area, highlighting existing deficiencies in the Project Area's resiliency and ability to adequately protect vulnerable populations and critical infrastructure and facilities from flooding during major storm events. The goal of the \$1M project is to reduce flood risk and increase the resiliency of the communities and ecosystems in the Project Area.

Members of the Historic Preservation Group contributed to an Alternatives Assessment to assess impacts to historic resources for the Draft Environmental Impact Statement (DEIS) and initiated Section 106 consultation with NJ HPO. Staff members conducted a reconnaissance-level field survey in the vicinity of proposed flood risk reduction improvements and developed intensive-level survey forms for resources determined potentially eligible for inclusion in the New Jersey and National Registers of Historic Places. AECOM architectural historians assessed **more than 80 resources** over 50 years of age in the Project Area, developing intensive-level survey forms for a select number of properties for review by the NJ HPO.

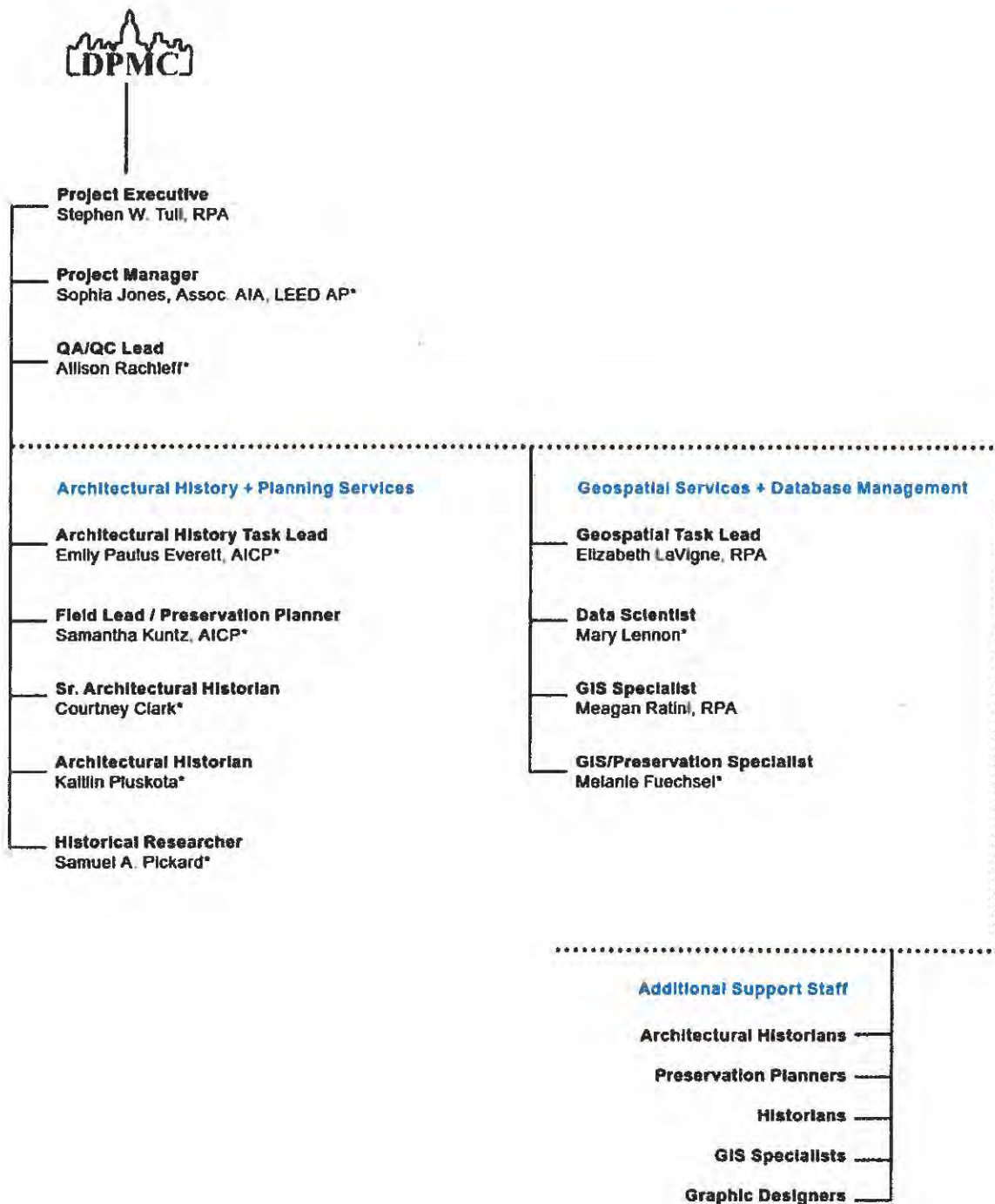
Inventory of Historical and Archaeological Collections Dover, DE (2017-2018)

The Delaware Division of Historical and Cultural Affairs (DHCA) tasked AECOM with conducting a full inventory of the main storage locations for the state historical and archaeological collections. As part of the \$639,000 project, AECOM inventoried **more than 90,000 museum objects**, over 7,000 boxes of archaeological material containing **over 4.5 million artifacts**, and an additional **16,000 archaeological artifacts** at an individual level. Staff identified, photographed, and conducted basic conditions assessments of individual objects and their housing. To address this vast amount of complex and interconnected data, AECOM developed mobile applications for field data collection which were then incorporated into the DHCA's existing collections databases.

In utilizing the mobile collections app, the field team was able to efficiently work through documentation while data specialists in the office reviewed the submitted records in real time. This streamlined the data collections process and ensured a controlled and organized approach for over a hundred thousand records.

In addition to the management of the physical collections, AECOM also addressed some of the digital aspects of curation. This included tracking and organizing information about accessions, archaeological provenience, archival documentation, and other elements of the collections beyond the objects themselves. Existing collections databases were merged into one overarching system which connected disparate aspects of the collections in order to allow the DHCA curators to better track, study, and care for the collections under their supervision. As part of this process, AECOM also developed a data standards manual to guide future cataloging efforts within the DHCA.

B Organization Chart



*Key Team Members (See Sections C, D, and E)

C Key Team Members Summary

Project Management

The project team assembled for this proposal was selected to fit the specific needs of the project scope. Key Team Members were chosen for their experience with large-scale architectural history surveys and preparation of New Jersey reconnaissance- and intensive-level forms and reports, as well as their involvement in projects documenting historic resources in flood vulnerable areas. AECOM also understands the need to prioritize data management for this project in order to efficiently manage the large number of resources and the data submission requirements. As such, the project team includes geospatial and database specialists with experience managing extensive databases of thousands of resources. This ability to match staff members to a specific set of skills demanded by a project is one of the strengths of hiring a large and diverse company such as AECOM. The assembled team will be dedicated to this project and the tasks for which they are assigned. Any changes in staffing will be made only in consultation with DPMC. Roles and responsibilities of the Key Team Members are described below.

Sophia Jones, MS, AIA, LEED AP Project Manager

Trained in both architecture and historic preservation, Ms. Jones will oversee and manage staff and ensure that all deliverables are completed in accordance with the scope of work, within the budget, and on time. Her broad range of experience includes preservation planning and historic research through the development of Preservation Plans, Historic Structure Reports, Vision Plans and National Register Nominations. She also manages all phases of building assessment, documentation and treatment implementation, as well as all phases of construction ranging from Schematic Design through Construction Administration. Ms. Jones has been a LEED Accredited Professional since 2011 and meets the Secretary of the Interior's Professional Qualification Standards for Historic Architecture and Historic Preservation [36 CFR61]. A New Jersey native and resident who joined AECOM in 2016, Ms. Jones' Commission experience includes serving as Chair of the New Jersey Historic Sites Council since 2006. Ms. Jones has extensive historic architecture and preservation planning project experience in New Jersey. She is currently completing a condition

assessment survey for the Bard How House in Burlington County and is also managing Amtrak projects for historic buildings addressing ADA issues.

Allison Rachleff, MA QA/QC Manager

As the QA/QC Manager, Ms. Rachleff will review deliverables for consistency and quality. Quality control is one of the most critical and fundamental objectives of effective project design and are intended to assure the quality of the historic investigations and completion of all required forms adheres to required guidelines as well as national preservation standards and best practices. Ms. Rachleff has 24 years of experience providing cultural resource management and historic architectural expertise, including supervising and conducting fieldwork and historic research for architectural resource surveys, National Register nominations, preservation plans, and historic structures reports. Ms. Rachleff is currently involved in the Lincoln Tunnel Helix replacement project in Weehawken that is situated in a historic urban environment surrounded by significant buildings and structures. As a New York City resident, Ms. Rachleff sits on the Board of the New York Landmarks Preservation Foundation, a non-profit whose goal is to support the outreach mission of the New York City Landmarks Preservation Commission. She meets the Secretary of Interior's Professional Qualification Standards for Architectural Historian and Historian.

Architectural History and Planning Services

Emily Paulus Everett, MA, AICP Architectural History Task Lead

Ms. Everett manages the Preservation Planning team at AECOM's Historic Preservation Group and will serve as the Architectural History Team Leader, overseeing the preparation of survey forms, identification of key contributing resources, and boundary and eligibility recommendations. She has over 17 years of experience in historic preservation and community planning, including as Architectural Historian for the DC Office of Planning and the New Hampshire State Historic Preservation Office. Ms. Everett has authored National Register nominations and conducted cultural resource surveys, rehabilitation tax credit reviews, and Section 106 reviews throughout the Mid-Atlantic region. She has

served as professional staff for several large urban historic districts, including the Capitol Hill Historic District in Washington, DC where she worked with property owners, developers, architects, and community organizations to ensure appropriate preservation treatments and compatibility with historic character. As such, Ms. Everett understands firsthand the importance of thorough and up-to-date survey information to Historic Preservation Commissions in making justifiable and consistent decisions. She recently served as Principal Investigator and Team Leader on numerous historic preservation studies and reports, including two innovative flood vulnerability assessments of historic resources in Pennsylvania. She meets the Secretary of the Interior's Professional Qualification Standards for Architectural History and Preservation Planning.

Samantha Kuntz, MCP/MS, AICP

Field Survey Lead / Preservation Planner

Ms. Kuntz will serve as the Architectural History Field Survey Leader and oversee daily management of the architectural survey work. Since joining AECOM in 2015, Ms. Kuntz's work has prioritized resiliency planning for historic resources, gaining experience in large-scale survey projects documenting flood vulnerable historic resources and speaking about the importance of integrating resiliency planning into standard preservation reviews at conferences, including Keeping History above Water (2017) and the New Jersey History and Historic Preservation Conference (2018). Her background in urban development and experience with both planning and preservation provides a foundation for cultural resource management within the context of complex, challenging, and ever-changing landscapes. Ms. Kuntz holds master's degrees in both City and Regional Planning and Historic Preservation from the University of Pennsylvania and she meets the Secretary of the Interior's Professional Qualification Standards for Architectural History and Preservation Planning. Ms. Kuntz currently serves as co-chair of the Young Friends of the Preservation Alliance in Philadelphia. She recently served as Field Survey Lead for the successful recordation of over 700 properties in the Blumberg-Sharswood neighborhood of Philadelphia for the Philadelphia Housing Authority – a project that also employed tablet technology.

Courtney Clark, MFA

Senior Architectural Historian

Ms. Clark joined AECOM in 2013 as an Architectural Historian. For the past 15 years, Ms. Clark has gained work experience throughout much of the southern, Mid-Atlantic, and New England states. Her

involvement includes a wide variety of cultural resources projects for both the governmental and private sectors including public outreach, historical research, historic resource surveys, recordations, Section 106, Section 4(f), preservation planning, and telecommunication projects. She recently completed a FEMA deployment in West Virginia in the wake of the June 2016 flood, where she assisted a School Task Force with Section 106 consultation for two historic schools damaged by flood waters. She will serve as Senior Architectural Historian on this project and will participate in field survey as well as oversee the development of survey forms pursuant to NJ HPO standards. Ms. Clark meets the Secretary of the Interior's Professional Qualification Standards for Architectural History.

Kaitlin Pluskota, MS

Architectural Historian

Ms. Pluskota will serve as Architectural Historian, contributing to the field survey and documentation efforts. Ms. Pluskota joined AECOM Corporation in 2015 and has three years' experience in historic preservation and cultural resources management. With her background in conservation science and site management, her cultural resource management practices focuses on the revitalization and protection of historic resources and communication of their importance to our culture and communities. She has participated in numerous tablet-based field surveys throughout the Mid-Atlantic and New England region. She meets the Secretary of Interior's Professional Qualification Standards for Architectural Historian and Historian.

Samuel A. Pickard, BA

Historical Researcher

Mr. Pickard will serve as the team's Historical Researcher, conducting research and developing the Historical Development Narrative for the project area. He has five years of experience as a historian and meets the Secretary of the Interior's Professional Qualification Standards for History. His experience includes fieldwork and historic research for historic architectural resource surveys, archaeology reports, and historic structures reports. He has extensive experience conducting research using primary and secondary sources and has authored contextual and site-specific histories for cultural resource reports in Pennsylvania, New Jersey, and Delaware. Mr. Pickard recently authored a detailed and well-received Historic Development Summary Report for the Sharswood-Blumberg neighborhood in Philadelphia.

Geospatial Services and Database Management

Elizabeth LaVigne, MS, RPA Geospatial Task Lead

Ms. LaVigne will serve as the Geospatial Task Lead. Since joining AECOM in 2016, Ms. LaVigne has managed the Geoarchaeological and Geospatial team, broadening the team's technological capabilities and supporting archaeological surveys with supplemental geophysical and geomorphological investigations. Her geospatial work has included the collection and processing of sub-meter accurate GPS field data, the construction of project specific data collection applications, the creation and population of GIS cultural resources geodatabases for Federal and State agencies, modeling viewsheds and archaeological sensitivity, and other spatial analysis. As the Geospatial Task Lead, Ms. LaVigne is also responsible for deliverable quality and accuracy. She is a Registered Professional Archaeologist and meets the Secretary of the Interior's Professional Qualifications Standards for Archaeologists.

Mary Lennon, MS Data Scientist

Ms. Lennon has nearly 7 years of experience in Cultural Resource Management (CRM) and will serve as Data Scientist for this project, supervising the influx of data and monitoring the incorporation of new data into the client's existing database. Ms. Lennon has held positions spanning from archaeological field technician to archival researcher, giving her in depth knowledge of important touch points in CRM projects. She has four years of experience in her current role where she manages geo-spatial data for large projects. Her primary duties include engineering data storage solutions and quality assurance procedures for large data intensive projects as well as providing descriptive and predictive analysis on final data sets. She uses both open source and propriety software and is proficient several programming languages; these include but are not limited to ArcGIS, QGIS, SQL, R, and Python. She recently obtained a Master's degree (MSc) in Geographic Data Science, graduated December 2017, and spent 9 months working in industry as a Data Scientist, developing skills in advanced spatial and non-spatial analytical techniques.

Meagan Ratini, MA, RPA GIS Specialist

Ms. Ratini will serve as the team's GIS Specialist and will take the lead in developing the digital collections application to document architectural resources in

Hoboken. Ms. Ratini specializes in combining traditional archaeological methodology, geophysics, and geographic information systems (GIS) to create fuller understandings of the past. She has experience in managing and interpreting complex datasets for both GIS and collections work. Recently, she served as the Data Manager for AECOM's inventory of State of Delaware's collections, designing mobile data collection applications and improving the databases for over 90,000 historical objects and 4.5 million archaeological artifacts. Since joining AECOM in 2016, her primary duties have included producing, managing, and analyzing geospatial data for above and below-ground cultural resource investigations as well as conducting geophysical surveys. Outside of archaeology, Ms. Ratini's professional experience within museums and other heritage organizations lends a nuanced understanding of concerns related to public interpretation and the preservation of cultural heritage. Ms. Ratini is a Registered Professional Archaeologist and meets the Secretary of Interior's Professional Qualification Standards for both Archaeology and History.

Melanie Fuechsel, BA GIS/Preservation Specialist

Ms. Fuechsel brings organization, data management, and GIS online skills to complex projects. At AECOM, her work has focused on the integration of cultural resource documentation data into user friendly online applications from local, state, and federal repositories via ArcGIS Online – resulting in a valuable planning tool for clients. Ms. Fuechsel has experience in a range of cultural resource management areas, including architectural survey, HABS documentation, National Register criteria, museum studies, archaeological field and laboratory work, preservation theory, urban planning and public outreach. She will work with both the Geospatial Services and Data Management team and the Architectural History team, applying diverse experience to the data management and field survey sides of this project.

Support Staff

In addition to our named staff above, AECOM employs architectural historians, preservation planners (AICP certified), historians, and geospatial analysts. Our coordination with these allied professionals allows our work to clearly connect with the federal, state, and municipal requirements. Should the need arise to provide additional staff, AECOM has the ability to "scale up" and provide additional staff on an as-needed basis.

D Key Team Members Project Experience Data Sheet

See Attachment.

KEY TEAM MEMBER PROJECT EXPERIENCE DATA SHEET

NAME Sophia Jones, MS, Assoc AIA, LEED AP

TITLE Project Manager

FIRM AECOM

| PROJECT TITLE LOCATION AND TOTAL CONSTRUCTION COST OR FEE | A/E OF RECORD FOR THIS REFERENCED PROJECT | SPECIFIC TYPE OF WORK EXPERIENCE (STUDY, SCHEMATIC, CONSTRUCTION ADMINISTRATION) | TEAM MEMBERS SPECIFIC ROLE OR TITLE ON THE REFERENCED PROJECT | DURATION OF TEAM MEMBER'S INVOLVEMENT OF THE REFERENCED PROJECT (IN MONTHS) | % OF TIME DURING DURATION BASED UPON A 40 HOUR WEEK | DATES OF THE TEAM MEMBER'S INVOLVEMENT IN THE REFERENCED PROJECT | CLIENT NAME CONTRACT PERSON AND PHONE NUMBER |
|--|---|--|---|---|--|--|---|
| Sharswood- Blumberg Neighborhood Redevelopment, Philadelphia, PA | N/A | Study (Section 106 Review and Compliance) | Project Coordinator | 12 months | 10% | 8/2017 - Present | Philadelphia Housing Authority/ [REDACTED] |
| Bard How House Condition Assessment | N/A | Study (Conditions Assessment) | Project Coordinator | Ongoing | 25% | 4/2017 - 6/2018 | Burlington County Historical Society/ [REDACTED] |
| 9-19 Halsey Street, Newark, NJ | N/A | Study (Design Consultation) | Historic Designer | 6 months | 25% | 4/2017 - 10/2017 | L&M Development Partners/ [REDACTED] |
| Rehabilitation of the Necco Court Pedestrian Bridge, Boston, MA | Gensler | Study (Design Consultation) | Historic Designer | 4 months | 30% | 2/2017 - 6/2017 | General Electric/ [REDACTED] |

* A KEY TEAM MEMBER IS A TECHNICAL OR MANAGEMENT PERSON DEVOTING 20% OR MORE OF THEIR TIME TO ANY PHASE OF THE PROJECT

KEY TEAM MEMBER PROJECT EXPERIENCE DATA SHEET

NAME Allison Rachleff, MA

TITLE QA/QC Manager

FIRM AECOM

| PROJECT TITLE LOCATION AND TOTAL CONSTRUCTION COST OR FEE | A/E OF RECORD FOR THIS REFERENCED PROJECT | SPECIFIC TYPE OF WORK EXPERIENCE (STUDY, SCHEMATIC, CONSTRUCTION ADMINISTRATION) | TEAM MEMBERS SPECIFIC ROLE OR TITLE ON THE REFERENCED PROJECT | DURATION OF TEAM MEMBER'S INVOLVEMENT OF THE REFERENCED PROJECT (IN MONTHS) | % OF TIME DURING DURATION BASED UPON A 40 HOUR WEEK | DATES OF THE TEAM MEMBER'S INVOLVEMENT IN THE REFERENCED PROJECT | CLIENT NAME CONTRACT PERSON AND PHONE NUMBER |
|---|--|--|---|---|--|--|--|
| I-84 Hartford Project | TranSystems: Engineer AECOM: Environmental Studies | Study (Environmental Impact Statement, Section 4(f) Evaluation, and Section 106 Consultation) | Senior Architectural Historian | 12 months | 50% | 9/2013 - Present | Connecticut Department of Transportation/ [REDACTED] [REDACTED] [REDACTED] [REDACTED] |
| Lincoln Tunnel Helix Replacement Project | AECOM | Study (Cultural Resources Consultation) | Senior Architectural Historian | 8 months | 20% | 5/2018 - Present | Port Authority of New York & New Jersey/ [REDACTED] [REDACTED] [REDACTED] |
| South Broad Street (Route 206) Bridge Rehabilitation Project | AECOM | Study (Cultural Resources Study, Section 4(f) Evaluation) | Senior Architectural Historian | 6 months | 20% | 1/2008 - Present | New Jersey Department of Transportation/ [REDACTED] [REDACTED] |

* A KEY TEAM MEMBER IS A TECHNICAL OR MANAGEMENT PERSON DEVOTING 20% OR MORE OF THEIR TIME TO ANY PHASE OF THE PROJECT

KEY TEAM MEMBER PROJECT EXPERIENCE DATA SHEET

NAME Emily Paulus Everett, MA, AICP

TITLE Architectural History Task Lead

FIRM AECOM

| PROJECT TITLE LOCATION AND TOTAL CONSTRUCTION COST OR FEE | A/E OF RECORD FOR THIS REFERENCED PROJECT | SPECIFIC TYPE OF WORK EXPERIENCE (STUDY, SCHEMATIC, CONSTRUCTION ADMINISTRATION) | TEAM MEMBERS SPECIFIC ROLE OR TITLE ON THE REFERENCED PROJECT | DURATION OF TEAM MEMBER'S INVOLVEMENT OF THE REFERENCED PROJECT (IN MONTHS) | % OF TIME DURING DURATION BASED UPON A 40 HOUR WEEK | DATES OF THE TEAM MEMBER'S INVOLVEMENT IN THE REFERENCED PROJECT | CLIENT NAME CONTRACT PERSON AND PHONE NUMBER |
|---|---|--|---|---|--|--|---|
| Rebuild by Design (RBD) Meadowlands Flood Protection Project | AECOM | Study (Environmental Impact Statement and Section 106 Consultation) | Senior Preservation Planner | 15 months | 20% | 6/2017 - 7/2018 | New Jersey Department of Environmental Protection, [REDACTED] [REDACTED] [REDACTED] [REDACTED] |
| Sharswood- Blumberg Neighborhood Redevelopment | N/A | Study (Section 106 Review and Compliance) | Preservation Planning Manager | 12 months | 30% | 8/2017 - Present | Philadelphia Housing Authority/ [REDACTED] [REDACTED] [REDACTED] [REDACTED] |
| Fair Lawn Avenue Bridge Mitigation | AECOM | Study (Section 106 Mitigation) | Senior Architectural Historian | 18 months | 20% | 11/2016 - 4/2018 | New Jersey Department of Transportation/ [REDACTED] [REDACTED] [REDACTED] [REDACTED] |
| Disaster Planning for Historic Properties - Cameron Co., PA | N/A | Study (Flood Vulnerability Survey and Assessment) | Survey Team Leader | 12 months | 60% | 5/2016 - 4/2017 | Pennsylvania State Historic Preservation Office (PA SHPO)/ [REDACTED] [REDACTED] [REDACTED] |
| Disaster Planning for Historic Properties - Philadelphia, PA | N/A | Study (Flood Vulnerability Survey and Assessment) | Survey Team Leader | 15 months | 60% | 12/2015 - 2/2017 | Pennsylvania State Historic Preservation Office (PA SHPO)/ [REDACTED] [REDACTED] [REDACTED] |

* A KEY TEAM MEMBER IS A TECHNICAL OR MANAGEMENT PERSON DEVOTING 20% OR MORE OF THEIR TIME TO ANY PHASE OF THE PROJECT

KEY TEAM MEMBER PROJECT EXPERIENCE DATA SHEET

NAME Samantha Kuntz, MCP/MS, AICP

TITLE Field Lead/Preservation Planner

FIRM AECOM

| PROJECT TITLE LOCATION AND TOTAL CONSTRUCTION COST OR FEE | A/E OF RECORD FOR THIS REFERENCED PROJECT | SPECIFIC TYPE OF WORK EXPERIENCE (STUDY, SCHEMATIC, CONSTRUCTION ADMINISTRATION) | TEAM MEMBERS SPECIFIC ROLE OR TITLE ON THE REFERENCED PROJECT | DURATION OF TEAM MEMBER'S INVOLVEMENT OF THE REFERENCED PROJECT (IN MONTHS) | % OF TIME DURING DURATION BASED UPON A 40 HOUR WEEK | DATES OF THE TEAM MEMBER'S INVOLVEMENT IN THE REFERENCED PROJECT | CLIENT NAME CONTRACT PERSON AND PHONE NUMBER |
|---|---|--|---|---|--|--|---|
| Sharswood- Blumberg Neighborhood Redevelopment | N/A | Study (Section 106 Review and Compliance) | Field Lead / Preservation Planner | 12 months | 100% | 8/2017 - Present | Philadelphia Housing Authority, [REDACTED] [REDACTED] [REDACTED] |
| Rebuild by Design Meadowlands Flood Protection Project | AECOM | Study (Environmental Impact Statement and Section 106 Consultation) | Preservation Planner | 15 months | 40% | 6/2017 - 7/2018 | New Jersey Department of Environmental Protection, [REDACTED] [REDACTED] [REDACTED] [REDACTED] |
| Inventory of Historical and Archaeological Collections, Dover, DE | N/A | Inventory and Database Management | Data Technician | 4 months | 10% | 2/2018 - 5/2018 | Delaware Division of Historical and Cultural Affairs, [REDACTED] [REDACTED] |
| Fair Lawn Avenue Bridge Mitigation | AECOM | Study (Section 106 Mitigation) | Architectural Historian | 18 months | 50% | 11/2016 - 4/2018 | New Jersey Department of Transportation, [REDACTED] [REDACTED] [REDACTED] |
| Disaster Planning for Historic Properties - Philadelphia, PA | N/A | Study (Flood Vulnerability Survey and Assessment) | Architectural Historian | 15 months | 100% | 12/2015 - 2/2017 | Pennsylvania State Historic Preservation Office (PA SHPO), [REDACTED] [REDACTED] |

* A KEY TEAM MEMBER IS A TECHNICAL OR MANAGEMENT PERSON DEVOTING 20% OR MORE OF THEIR TIME TO ANY PHASE OF THE PROJECT

KEY TEAM MEMBER PROJECT EXPERIENCE DATA SHEET

NAME Courtney Clark, MFA

TITLE Senior Architectural Historian

FIRM AECOM

| PROJECT TITLE LOCATION AND TOTAL CONSTRUCTION COST OR FEE | A/E OF RECORD FOR THIS REFERENCED PROJECT | SPECIFIC TYPE OF WORK EXPERIENCE (STUDY, SCHEMATIC, CONSTRUCTION ADMINISTRATION) | TEAM MEMBERS SPECIFIC ROLE OR TITLE ON THE REFERENCED PROJECT | DURATION OF TEAM MEMBER'S INVOLVEMENT OF THE REFERENCED PROJECT (IN MONTHS) | % OF TIME DURING DURATION BASED UPON A 40 HOUR WEEK | DATES OF THE TEAM MEMBER'S INVOLVEMENT IN THE REFERENCED PROJECT | CLIENT NAME CONTRACT PERSON AND PHONE NUMBER |
|---|---|--|---|---|--|--|--|
| Abington Township Historic Resources Survey Project | N/A | Study (Historic Resources Survey) | Architectural Historian | 30 months | 20% | 2015 - Present | Heritage Conservancy, [REDACTED] |
| Park Avenue Reroute Project & US 13 Lochmeath Way to Puncheon Run Project, DE | AECOM | Study (Section 106 Review and Compliance) | Architectural Historian | 13 months | 60% | 7/2017 - Present | Delaware Department of Transportation/ [REDACTED] |
| Disaster Planning for Historic Properties - Bedford Co., PA | N/A | Study (Flood Vulnerability Survey and Assessment) | Architectural Historian | 12 months | 40% | 5/2016 - 4/2017 | Pennsylvania State Historic Preservation Office (PA SHPO)/ [REDACTED] |

* A KEY TEAM MEMBER IS A TECHNICAL OR MANAGEMENT PERSON DEVOTING 20% OR MORE OF THEIR TIME TO ANY PHASE OF THE PROJECT

KEY TEAM MEMBER PROJECT EXPERIENCE DATA SHEET

NAME Mary Lennon

TITLE Data Scientist

FIRM AECOM

| PROJECT TITLE LOCATION AND TOTAL CONSTRUCTION COST OR FEE | A/E OF RECORD FOR THIS REFERENCED PROJECT | SPECIFIC TYPE OF WORK EXPERIENCE (STUDY, SCHEMATIC, CONSTRUCTION ADMINISTRATION) | TEAM MEMBERS SPECIFIC ROLE OR TITLE ON THE REFERENCED PROJECT | DURATION OF TEAM MEMBER'S INVOLVEMENT OF THE REFERENCED PROJECT (IN MONTHS) | % OF TIME DURING DURATION BASED UPON A 40 HOUR WEEK | DATES OF THE TEAM MEMBER'S INVOLVEMENT IN THE REFERENCED PROJECT | CLIENT NAME CONTRACT PERSON AND PHONE NUMBER |
|---|---|--|---|---|--|--|---|
| Disaster Planning for Historic Properties - Cameron Co., PA | N/A | Study (Flood Vulnerability Survey and Assessment) | Geospatial Lead - QA/QC | 6 months | 20% | 5/2016 - 4/2017 | Pennsylvania State Historic Preservation Office (PA SHPO)/ [REDACTED] |
| Disaster Planning for Historic Properties - Philadelphia, PA | N/A | Study (Flood Vulnerability Survey and Assessment) | Geospatial Lead - QA/QC | 6 months | 20% | 12/2015 - 2/2017 | Pennsylvania State Historic Preservation Office (PA SHPO)/ [REDACTED] |
| SEPTA Cultural Resource Online Database - Philadelphia, PA | N/A | GIS Application | Geospatial Lead - QA/QC | 24 months | 5% | 1/2015 - Present | Southeastern Pennsylvania Transportation Authority (SEPTA)/ [REDACTED] |

* A KEY TEAM MEMBER IS A TECHNICAL OR MANAGEMENT PERSON DEVOTING 20% OR MORE OF THEIR TIME TO ANY PHASE OF THE PROJECT

KEY TEAM MEMBER PROJECT EXPERIENCE DATA SHEET

NAME Melanie Fuechsel, BA

TITLE GIS / Preservation Specialist

FIRM AECOM

| PROJECT TITLE LOCATION AND TOTAL CONSTRUCTION COST OR FEE | A/E OF RECORD FOR THIS REFERENCED PROJECT | SPECIFIC TYPE OF WORK EXPERIENCE (STUDY, SCHEMATIC, CONSTRUCTION ADMINISTRATION) | TEAM MEMBERS SPECIFIC ROLE OR TITLE ON THE REFERENCED PROJECT | DURATION OF TEAM MEMBER'S INVOLVEMENT OF THE REFERENCED PROJECT (IN MONTHS) | % OF TIME DURING DURATION BASED UPON A 40 HOUR WEEK | DATES OF THE TEAM MEMBER'S INVOLVEMENT IN THE REFERENCED PROJECT | CLIENT NAME CONTRACT PERSON AND PHONE NUMBER |
|---|---|--|---|---|--|--|---|
| SEPTA Cultural Resource Online Database - Philadelphia, PA | N/A | GIS Application | GIS Co-Lead | 27 months | 100% | 6/2017 - Present | Southeastern Pennsylvania Transportation Authority (SEPTA)/ [REDACTED] |
| I-95 Girard Avenue Interchange Improvements Project | N/A | Study (Section 106 Review and Compliance) | GIS Specialist, Data Manager | 28 months | 100% | 5/2017- Present | Pennsylvania Department of Transportation/ [REDACTED] |
| Inventory of Historical and Archaeological Collections, Dover, DE | N/A | Inventory and Database Management | Museum Technician | 1 month | 10% | 6/2017 - 6/2017 | Delaware Division of Historical and Cultural Affairs, [REDACTED] |
| | | | | | | | |
| | | | | | | | |
| | | | | | | | |
| | | | | | | | |

* A KEY TEAM MEMBER IS A TECHNICAL OR MANAGEMENT PERSON DEVOTING 20% OR MORE OF THEIR TIME TO ANY PHASE OF THE PROJECT

KEY TEAM MEMBER PROJECT EXPERIENCE DATA SHEET

NAME Kaitlin Pluskota, MS

TITLE Architectural Historian

FIRM AECOM

| PROJECT TITLE LOCATION AND TOTAL CONSTRUCTION COST OR FEE | A/E OF RECORD FOR THIS REFERENCED PROJECT | SPECIFIC TYPE OF WORK EXPERIENCE (STUDY, SCHEMATIC, CONSTRUCTION ADMINISTRATION) | TEAM MEMBERS SPECIFIC ROLE OR TITLE ON THE REFERENCED PROJECT | DURATION OF TEAM MEMBER'S INVOLVEMENT OF THE REFERENCED PROJECT (IN MONTHS) | % OF TIME DURING DURATION BASED UPON A 40 HOUR WEEK | DATES OF THE TEAM MEMBER'S INVOLVEMENT IN THE REFERENCED PROJECT | CLIENT NAME CONTRACT PERSON AND PHONE NUMBER |
|---|---|--|---|---|--|--|--|
| Disaster Planning for Historic Properties - Philadelphia, PA | N/A | Study (Flood Vulnerability Survey and Assessment) | Architectural Historian | 14 months | 20% | 1/2016 - 2/2017 | Pennsylvania State Historic Preservation Office (PA SHPO)/ [REDACTED] |
| Disaster Planning for Historic Properties - Bedford Co., PA | N/A | Study (Flood Vulnerability Survey and Assessment) | Architectural Historian | 12 months | 80% | 5/2016 - 4/2017 | Pennsylvania State Historic Preservation Office (PA SHPO)/ [REDACTED] |
| NYSEG Transmission Project 871/872 - Clinton Co., NY | N/A | Study (Section 106 Review and Compliance) | Survey Lead/ Architectural Historian | 7 months | 70% | 4/2017 - 11/2017 | New York State Electric and Gas Corp./ [REDACTED] |
| Barton & Broad Street Bridge Replacement Project - Pawtucket, RI | N/A | Study (Section 106 Review and Compliance) | Architectural Historian | 6 months | 40% | 3/2018 - Present | Rhode Island Department of Transportation/ [REDACTED] |
| | | | | | | | |
| | | | | | | | |

* A KEY TEAM MEMBER IS A TECHNICAL OR MANAGEMENT PERSON DEVOTING 20% OR MORE OF THEIR TIME TO ANY PHASE OF THE PROJECT

KEY TEAM MEMBER PROJECT EXPERIENCE DATA SHEET

NAME Samuel A. Pickard, BA

TITLE Historian

FIRM AECOM

| PROJECT TITLE LOCATION AND TOTAL CONSTRUCTION COST OR FEE | A/E OF RECORD FOR THIS REFERENCED PROJECT | SPECIFIC TYPE OF WORK EXPERIENCE (STUDY, SCHEMATIC, CONSTRUCTION ADMINISTRATION) | TEAM MEMBERS SPECIFIC ROLE OR TITLE ON THE REFERENCED PROJECT | DURATION OF TEAM MEMBER'S INVOLVEMENT OF THE REFERENCED PROJECT (IN MONTHS) | % OF TIME DURING DURATION BASED UPON A 40 HOUR WEEK | DATES OF THE TEAM MEMBER'S INVOLVEMENT IN THE REFERENCED PROJECT | CLIENT NAME CONTRACT PERSON AND PHONE NUMBER |
|---|---|--|---|---|--|--|---|
| Sharswood- Blumberg Neighborhood Redevelopment | N/A | Study (Section 106 Review and Compliance) | Historian / Field Surveyor | 3 months | 60% | 9/2017 - 1/2018 | Philadelphia Housing Authority/ [REDACTED] |
| I-95 Girard Avenue Interchange Improvements Project | N/A | Study (Section 106 Review and Compliance) | Historian | 61 months | 100% | 8/2013 - Present | Pennsylvania Department of Transportation/ [REDACTED] |
| Rebuild by Design Meadowlands Flood Protection Project | AECOM | Study (Environmental Impact Statement and Section 106 Consultation) | Historian | 1 month | 40% | 11/2017 - 12/2017 | New Jersey Department of Environmental Protection/ [REDACTED] |
| SEPTA Cultural Resource Online Database - Philadelphia, PA | N/A | GIS Application | Historian | 5 months | 30% | 5/2015 - Present | Southeastern Pennsylvania Transportation Authority (SEPTA)/ [REDACTED] |
| Park Avenue Reroute Project - Georgetown, DE | AECOM | Study (Section 106 Review and Compliance) | Historian/Field Surveyor | 2 months | 60% | 12/2017-1/2018 | Delaware Department of Transportation/ [REDACTED] |

* A KEY TEAM MEMBER IS A TECHNICAL OR MANAGEMENT PERSON DEVOTING 20% OR MORE OF THEIR TIME TO ANY PHASE OF THE PROJECT

E Project Key Personnel List

See Attachment.

| FIRM NAME | KEY PERSONNEL & TITLE | | | | | |
|-----------|---|-----------------------------------|-----------------------------------|-----------------------------------|-------------------------------|-----------------------------|
| | | BACKGROUND RESEARCH/ FIELDWORK | SUBMISSION OF DRAFT PRODUCT | SUBMISSION OF FINAL PRODUCT | PROJECT CLOSE-OUT PHASE | HOURLY WAGE LEVEL 1-7 |
| AECOM | Sophia Jones, MS, Assoc. AIA, LEED AP Project Manager | 20% | 2% | 5% | 2% | 5 |
| AECOM | Allison Rachleff, MA QA/QC Manager | 0% | 30% | 0% | 0% | 5 |
| AECOM | Emily Paulus Everett, MA, AICP Architectural History Task Lead | 20% | 30% | 5% | 0% | 4 |
| AECOM | Samantha Kuntz, MCP/MS, AICP Survey Team Lead / Preservation Planner | 75% | 100% | 35% | 20% | 3 |
| AECOM | Courtney Clark, MFA Senior Architectural Historian | 40% | 45% | 0% | 0% | 4 |
| AECOM | Kaitlin Pluskota, MS Architectural Historian | 40% | 100% | 0% | 0% | 3 |
| AECOM | Samuel A. Pickard, BA Historical Researcher | 40% | 100% | 0% | 0% | 3 |
| AECOM | Mary Lennon, MS Data Scientist | 10% | 40% | 20% | 0% | 2 |
| AECOM | Melanie Fuechsel, BA GIS/Preservation Specialist | 40% | 100% | 0% | 0% | 2 |

F Project Approach

AECOM understands that intensive-level architectural survey of Hoboken's historic districts is more than a standard architectural survey. We envision this project as a foundation on which the City of Hoboken and its Historic Preservation Commission can base reasonable, consistent, and justifiable decisions and further their holistic approach to preservation within and adjacent to its historic districts. We aim to assist in that endeavor by providing expert analysis and recommendations on New Jersey and National Register eligibility, district boundaries, building typologies, character-defining features, and the effects of recent flood mitigation measures on the character of historic districts and streetscapes.

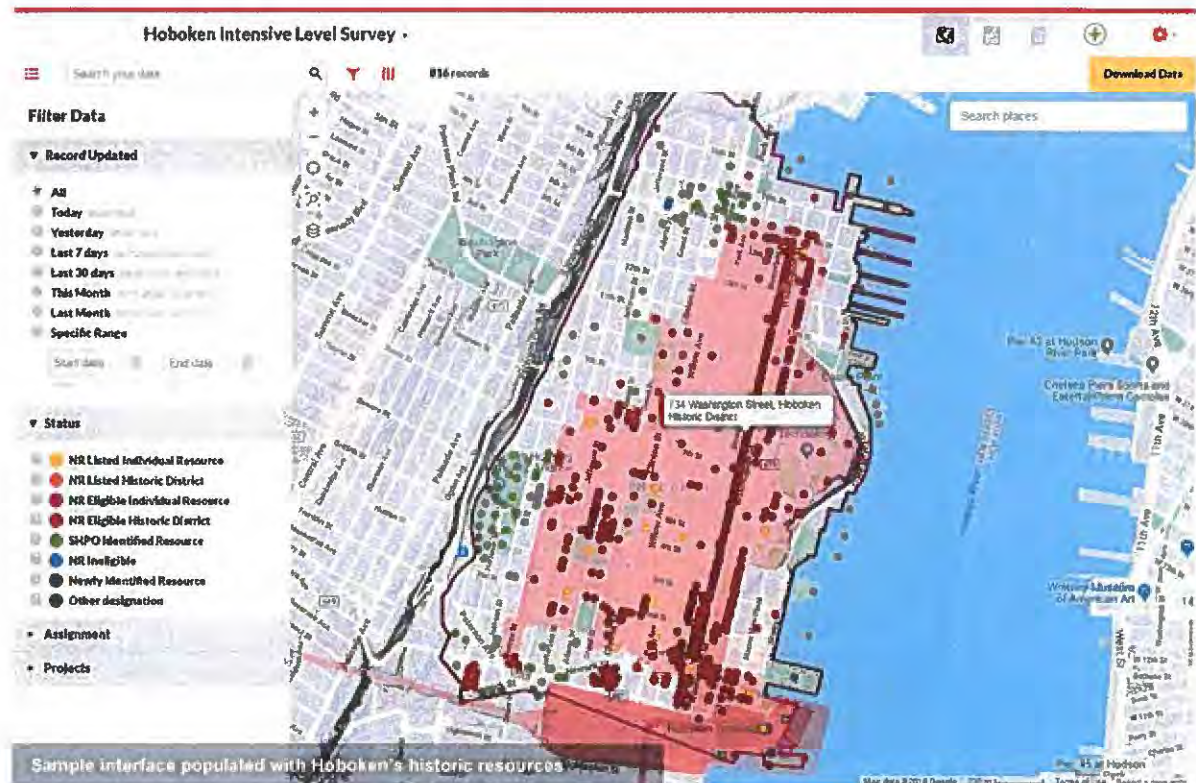
Preliminary Methodology

Survey

All fieldwork will be conducted by qualified, professional staff from the Historic Preservation Group. Using our proven fieldwork strategy for large-scale survey projects, AECOM will deploy a field team of four surveyors who will work in pairs within the survey area in a safe and efficient manner. Each member of the field team will be equipped with their

own LTE/Wi-Fi-connected hand-held tablet preloaded with a data collection app designed to mirror the NJ HPO intensive-level survey form. Surveyed properties will be color-coded, allowing office-based team members to track survey progress in real time. All data collected to the tablet will be stored locally and synced to a web-based database after each point is collected. It is also our practice to save backup data exported from the web-based database to AECOM's local Burlington sever at the end of each day, at which point a Senior Architectural Historian will conduct desktop QA/QC reviews for completeness and accuracy.

Well-framed digital, color photographs for the Base Survey Forms will be taken with the tablet by each surveyor, at a minimum size that exceeds required resolution standards. Each tablet has sufficient storage space to allow for multiple views of each resource where needed. In addition to the tablet, two surveyors will also be equipped with a DSLR camera featuring an optical zoom lens for taking architectural detail shots when needed (particularly for key contributing resources); each DSLR has built-in GPS for geotagging the image location. Based on our experience surveying in similar contexts, AECOM



anticipates completing an average of 150 properties per day in fewer than three weeks.

Data Management

Data management is critical for a project of this scale to succeed in both budget and schedule. As such, our Geospatial Services and Database Management team has already begun work developing the tools for this project (*see sample interface*).

Our team will use a cloud-based data collection app to survey the 1,607 resources. Due to previous survey work in New Jersey that utilized this platform, our team has already developed an intensive-level survey application for NJ HPO survey forms. We will expand on this existing program to ensure additional data unique to this project is collected, including: additions and modifications; flood vulnerable details (projections, basements, openings, etc.), if desired; visible flood mitigation interventions; and contextual details such as streetscape elements. This information will be folded into the three-paragraph architectural description on each Base Survey Form.

Utilizing a mobile app with data entry requirements and restrictions minimizes error and allows our team to increase efficiency for multiple aspects of the project, including field survey, form production and reporting. In addition, the geospatial database created from this data will then be integrated into the NJ HPO's existing Microsoft Access database – eliminating extraneous transcription time.

Scope of Work

Survey is a critical preservation tool that ensures consistent identification, documentation, and evaluation of important cultural and historic resources. Thorough and up-to-date surveys also play a crucial role in effective planning by federal, state, and local stakeholders by identifying key historic themes, building types and styles, and character-defining features that should be protected, as well as identify areas or buildings vulnerable to natural or manmade threats. They also provide a foundation for reasonable, consistent, and justifiable decision-making for both public and private pursuits. A comprehensive survey of the 1,607 historic properties identified by the NJ HPO will provide a thorough evaluation of key-contributing, contributing and non-contributing resources; updated boundary recommendations; and ultimately a more nuanced understanding of how these resources have evolved since the last comprehensive historic resource survey in 1979 and how they are prepared to face the future.

Phase 1

Kickoff Meeting

The initial phase of this project is designed to build-in efficiencies from the start. The first step is establishing communication between AECOM, DPMC, and the NJ HPO to thoroughly understand expectations, goals and objectives. AECOM task leaders will meet with representatives of DPMC and NJ HPO in Trenton, New Jersey for a three-hour kickoff meeting during Week One, immediately following the Notice to Proceed. A written summary of the proposed research design and survey methodology will be provided at that time and a demonstration of the mobile data collection app can be provided, if desired. Adjustments to the survey methodology will be made as needed, based on the feedback provided.

While the communicative aspect of the project is underway, AECOM data specialists will begin working on mapping to support anticipated fieldwork (using the property data provided by NJ HPO) and finalize the data collection app described in the "Preliminary Methodology" section. Specifically, our data team will populate the data collection app with geospatial data points of all 1,607 properties prior to the start of fieldwork. This reduces time in the field traditionally spent by architectural historians locating and mapping properties and improves the field data organization instantaneously. Historic district boundaries and flood hazard areas can also be added for additional analysis and inclusion in the reporting phase (i.e. number of key contributing properties in flood hazard areas).

Though the shortest of all seven phases, AECOM believes Phase 1 is one of the most significant phases of the project. Based on our recent experience surveying 500+ resources, a well-designed and organized project at the onset lays the foundation for well-managed project throughout.

Deliverables

- Survey Methodology (NJ HPO Review)
- Kickoff Meeting Minutes

Phase 2

Background Research / Fieldwork

Hudson County and Hoboken, in particular, has a rich assortment of cartographic and historical source material available. Digital and paper collections held by the New Jersey Room of the Jersey City Free Public Library, the Hoboken Historical Museum,

the New Jersey State Archives, and New Jersey State Library, in addition to numerous on-line sources, will be synthesized into a narrative detailing the development of the survey area from the earliest settlement to the present day, including major flood events. The narrative, prepared by a qualified Historian, will provide a context for identifying and discussing contributing resources and building typologies within the historic districts as well as various preservation, revitalization, and resiliency efforts to date. Known and anticipated key contributing buildings will be highlighted.

The field survey of the initial 100 resources will be undertaken by the Architectural History Task Lead and the Field Survey Lead during Week 1. The initial survey area will be chosen in consultation with the client and NJ HPO at the kickoff meeting. The purpose of deploying a smaller team for the initial 100 resources is to "set the stage" for the remainder of the survey. At this time, the team leaders will 1) test and refine the tailored data collection app; 2) preview the entire survey area in order to anticipate field conditions, locate any obvious site access limitations, security restrictions or needed safety precautions, observe resource types and identify any unique or specialized building types or features; and 3) preliminarily identify key contributing resources throughout the survey area. We anticipate this task to take 1-2 days.

While part of Phase 3, AECOM proposes to submit the draft forms to NJ HPO for the first 100 surveyed resources at the beginning of Week 3. Doing so will allow us to incorporate any comments that effect the remainder of the field survey as well as test and confirm the integration of field-collected data to the NJ HPO database. While awaiting comments on the 100 draft forms, we will hold an internal field survey training session for all field staff, covering an overview of Hoboken's historical development, common resource types and styles, preferred terminology, common flood mitigation measures, field safety protocol, and other logistics.

Incorporating "lessons learned" and NJ HPO comments from the initial 100 properties, the full, four-person field survey team will be deployed to conduct the remainder of the survey, using the survey methodology described in the "Preliminary Methodology" section." Field survey of the remaining 1,507 resources is expected to be complete in 10-12 days, by the end of Week 5. The team's Historical Researcher will join the field survey team during the second week of survey in Hoboken, in order to

complete research for intensively-surveyed properties.

As part of the public outreach effort, AECOM also proposes that survey team members carry Q&A sheets (approved or prepared by the client) containing information on the project for dissemination to curious citizens, as we are always eager to help build support within the communities in which we work.

Deliverables

- Digital Survey Photography (CD)
- Public Meeting I Minutes
- Draft Survey Forms (1-100)

Phase 3

Submission of draft product (100 forms)

As stated, AECOM proposes to submit draft survey forms 1-100 to NJ HPO by the end of Week 3. Doing so will allow us to incorporate any comments that affect the remainder of the field survey as well as test and confirm the integration of field-collected data into the NJ HPO database.

Phase 4

Submission of draft product including historical narrative report, 500 survey draft forms, and revision of initial 100 forms

Upon conclusion of the field survey, team members will turn their attention to completing revisions to survey forms 1-100 and the Historical Narrative Report as well as producing draft survey forms 101-600. We anticipate submitting the Final Historical Narrative Report, revised survey forms 1-100, and draft survey forms 101-600 by the end of Weeks 4 and 9, respectively.

As stipulated in the RFP, an Interim Expenditure Report and request for reimbursement will be submitted upon review and approval of these items.

Deliverables

- Revised Survey Forms (1-100)
- Draft Survey Forms (101-600)
- Final Historical Narrative Report
- Interim Expenditure Report

Phase 5

Submission of draft product (500 forms)

Upon receiving comments from NJ HPO, the team will work to immediately complete revisions to survey forms 101-600 as well as producing draft survey forms 601-1,100. We anticipate submitting draft survey forms 601-1,100 by the end of Week 10.

While team members are completing revised and draft survey forms, the Architectural History Task Lead and Field Team Lead will begin work on the Draft Intensive-Level Survey Report.

Deliverables

- Revised Survey Forms (101-600)
- Draft Survey Forms (601-1,100)

Phase 6

Submission of draft product (500 forms)

Upon receiving comments from NJ HPO, the team will work to immediately complete revisions to survey forms 601-1,100 as well as producing the final draft survey forms 1,101-1,607. We anticipate submitting draft survey forms 1,101-1,607 by the end of Week 16

Likewise, the Draft Intensive-Level Survey Report will be submitted to NJ HPO for review by the end of Week 16. The Report will be prepared in accordance with Section 3.5 of the *Guidelines for Architectural Survey*. It will include the following sections: title page, abstract, table of contents, list of illustrations, introduction, background research including historic overview and contexts, research design, descriptions of architectural survey, interpretations and conclusions, and recommendations. It will be illustrated with historic photographs and will be accompanied by a bibliography. Appropriate period of significance will be discussed and justified, as will historic district boundaries. A separate section of the report will be devoted to a written and illustrated analysis of the impact of recorded flood mitigation measures and other climate change adaptations and their impact on the character and integrity of the historic districts. Tables and maps showing properties in each historic district that are located within a flood hazard area can also be included, if useful to the client and City. Appendices will include additional mapping, resumes of project personnel, the scope of work and accepted proposal, and survey forms.

Deliverables

- Revised Survey Forms (601-1,100)

- Draft Survey Forms (1,101-1,607)
- Draft Intensive-Level Architectural Survey Report

Phase 7

Submission of final product

Upon receiving comments from NJ HPO, the team will work to immediately complete revisions to survey forms 1,101-1,607. Likewise, staff will simultaneously address revisions to the Draft Intensive-Level Survey Report. Revised survey forms 1,101-1,607 and the Final Intensive-Level Survey Report will be submitted at the end of Week 21.

Upon submission and acceptance of these items, AECOM will turn their attention to completing the close-out documentation and preparing the GIS/Data geodatabase deliverable package in accordance with the RFP.

Deliverables

- Revised Survey Forms (1,101-1,607+)
- Final Intensive-Level Architectural Survey Report
- ArcGIS Geodatabase with GIS Mapping Data (CD)
- NJ HPO Access Database (CD)
- Public Meeting II Minutes
- Close Out Documentation
- Submission Forms

Meetings

AECOM will participate in two public meetings held in the City of Hoboken, taking place during Phases 1 and 7 of the project. Our team is well equipped to conduct outreach to members of the community and will prepare a concise presentation and handouts as determined by the client at the kickoff meeting. Any and all feedback from the community at these meetings will be incorporated into the survey work and deliverables in order to facilitate an open planning process to best benefit historic resources and cultural heritage in the City of Hoboken.

Additionally, AECOM team leaders will be available to attend three in-person meetings at critical junctures throughout the course of the project, including the kick-off meeting immediately following award of the contract, at the conclusion of the Part 1 survey effort and review of 100 survey forms to confirm expectations with DPMC and the NJ HPO prior to launching Part 2 of the survey and developing 1500+ forms, and following the full identification level survey component. In addition to these meetings, team members can also be available for regularly-scheduled project update phone calls or virtual meetings with DMPC and NJ HPO staff to discuss progress, coordination, and any other issues that require attention. DMPC and NJ HPO will be welcome to join survey team members on location at any point during the field survey effort.

Representatives of the City of Hoboken are welcome to participate in these meetings at the client's discretion.

Safety

Safety is the highest priority at AECOM and will be an important part of our survey preparation efforts.



Before going into the field, employees are required to complete a field-safety training course and a four-hour defensive driving course offered by the National Safety Council. Survey team members hold morning meetings before beginning each day of survey to discuss potential hazards and review emergency procedures. We use sport utility fleet vehicles marked with the company name and equipped with a flashing light. As teams will be on foot for much of the field survey effort, each team member will be outfitted with

a high-vis traffic safety vest that will make them visible and recognizable while in the field.

Assumptions and Exclusions

- AECOM will conduct architectural survey of a maximum of 1,607 properties.
- AECOM will prepare intensive-level architectural survey forms (base form and relevant attachments) for no more than twenty-five (25) potentially individually eligible historic resources.
- GIS property and parcel data will be provided to AECOM by the NJ HPO (or the appropriate government agency) at the start of the project.
- All draft survey forms, narratives, and report documents shall be submitted digitally via an approved file sharing program and as black and white hardcopy to the identified state and local representatives.
- All final survey forms, narratives, and report shall be submitted as an electronic copy on CD and/or approved file sharing program and as a color hardcopy to the identified state and local representatives.
- AECOM assumes a set amount of time for each NJ HPO review and comment, predetermined at the kickoff meeting. Exhibit B has already stated that the survey methodology will have a one (1) week turn around. As such, AECOM has assumed for this proposal a one (1) week turn around by NJ HPO for submissions concerning 100 or fewer properties, a two (2) week turn around by NJ HPO for submissions concerning 500 or more properties, and two (2) week turn around by NJ HPO for draft and final report submissions.
- AECOM assumes DPMC's permission to communicate and consult directly with NJ HPO staff throughout the duration of this project.
- The ArcGIS Geodatabase and NJ HPO Access database will only be submitted at the end of the project, not at any intermediate point.
- No non-digital photography submissions are required for the surveyed properties.
- AECOM will conduct no more than three (3) in-person meetings with the client.
- AECOM will participate in no more than two (2) public meetings.
- AECOM assumes that the client (DPMC), in conjunction with the City of Hoboken, will secure venues for the two public meetings, advertise to the community, and assist with the presentation.

G Project Schedule



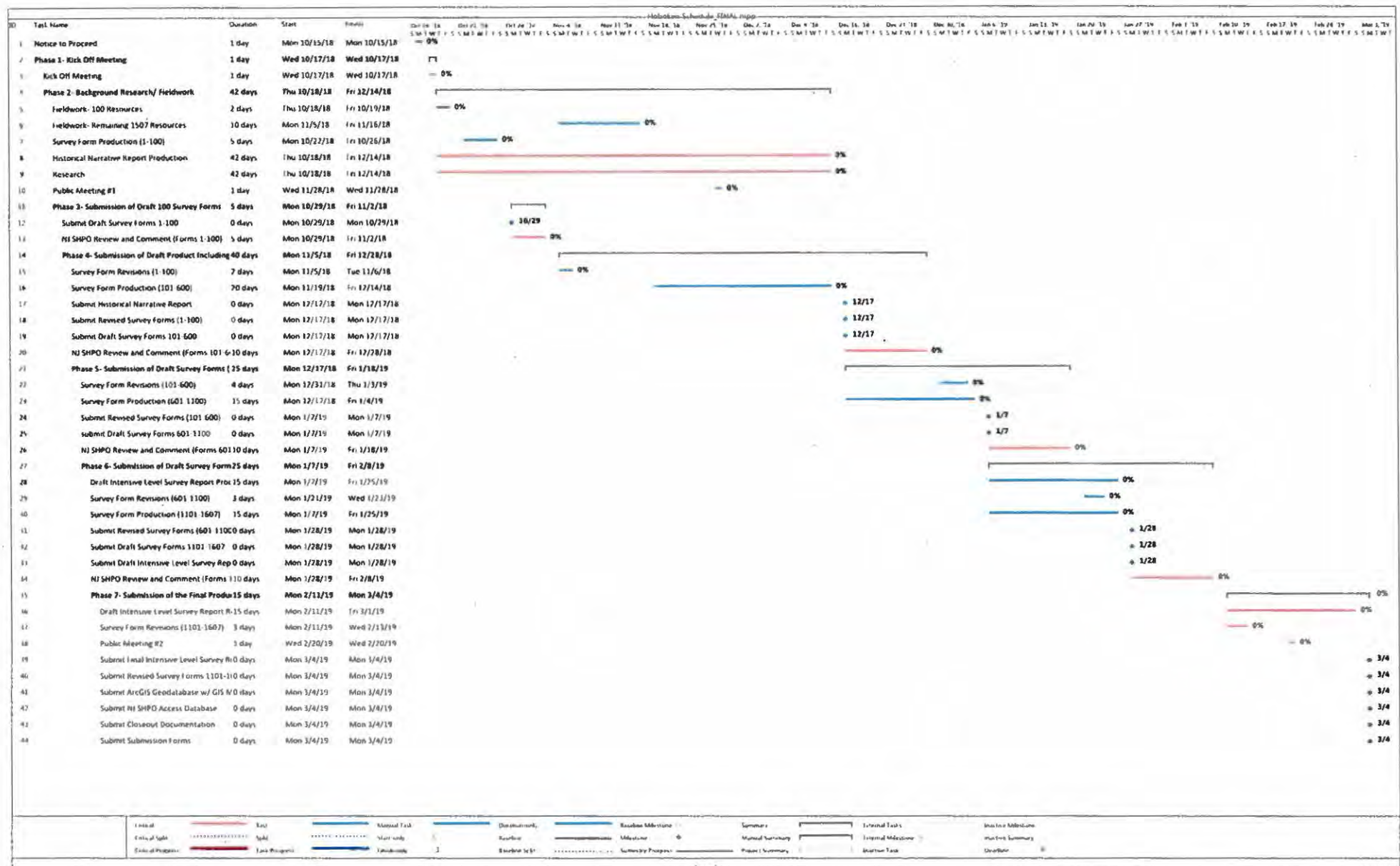
AECOM can initiate this work immediately on **October 15, 2018** upon receipt of DPMC's Notice to Proceed and receipt of a signed and fully executed contract. Given the timeframe provided for this project, our team understands the need for efficiency in every phase of the project while maintaining a high-quality work product throughout. We envision a highly organized and strategic approach to researching, documenting, and reporting on the 1,607 identified resources in Hoboken.

Schedule Narrative

DPMC's proposed Scope of Work covers seven phases within a span of 23 weeks. AECOM has reviewed the estimated duration per phase and is in agreement that the time allocated for each task is sufficient to conduct a thorough and detailed intensive-level survey for the 1,607 properties. Due to anticipated overlap between Phases 1 and 2, AECOM is proposing a 22-week timeline in lieu of the 23-week schedule outlined in the RFP.

AECOM has a proven track record of meeting aggressive project schedules for our clients and is confident in our team's ability to deliver a high-quality project within this 22-week timeframe, based on:

- Our **experience** conducting successful large-scale survey projects throughout the Mid-Atlantic Region, including New Jersey.
- Our ample **in-house personnel**, which includes a "deep bench" of highly-skilled preservation professionals in the areas of architectural history, preservation planning, history, and geospatial analysis. The team selected for this project will be dedicated throughout the duration of the project.
- Our strategic **preparation** and proven **field survey methodology**, which will incorporate efficiencies from the start in order to complete the field survey of the 1,607 properties in fewer than three weeks.
- Our use of **mobile data collection technology** to efficiently capture data in the field. Such use has proven critical to the success of large-scale survey efforts because it allows for greater accuracy in the field while minimizing error and the need for desktop analysis.



H Certificate of Employee Information Report

Certification 3838

**CERTIFICATE OF EMPLOYEE INFORMATION REPORT
RENEWAL**

This is to certify that the contractor listed below has submitted an Employee Information Report pursuant to N.J.A.C. 17:27-1.1 et. seq. and the State Treasurer has approved said report. This approval will remain in effect for the period of **15-JUL-2018** to **15-JUL-2021**

AECOM TECHNICAL SERVICES, INC.
1999 AVENUE OF THE STARS
LOS ANGELES CA 90071



Elizabeth Maher Muoio
ELIZABETH MAHER MUOIO
State Treasurer

I Certification of Public Law 2005, Chapter 92

Public Law 2005, Chapter 92
Formerly: Executive Order 129

SOURCE DISCLOSURE CERTIFICATION FORM

Bidder: AECOM Technical Services, Inc.

I hereby certify and say:

I have personal knowledge of the facts set forth herein and am authorized to make this Certification on behalf of the Bidder.

The Bidder submits this Certification as part of a bid proposal in response to the referenced solicitation issued by the State of New Jersey, Department of Treasury, Division of Property Management and Construction (DPMC), in accordance with the requirements of Public Law 2005, Chapter 92, (N.J.S.A. 52:34-13.2 et seq., superseding Executive Order 129 (2004)).

The following is a list of every location where services will be performed by the bidder and all subcontractors.

| <u>Bidder or Subcontractor</u> | <u>Description of Services</u> | <u>Performance Location(s) by Country</u> |
|--------------------------------|-----------------------------------|---|
| AECOM Technical Services, Inc. | Cultural Resources Investigations | 437 High Street Burlington, NJ 08016 |

Any changes to the information set forth in this Certification during the term of any contract awarded under the referenced Project Number will be immediately reported by the Bidder to the Contract Compliance Unit in the DPMC, Department of Treasury, State of New Jersey, PO Box 034, Trenton, NJ 08625.

I understand that, after award of a contract to the Bidder, it is determined that the Bidder has shifted services declared above to be provided within the United States to sources outside the United States, prior to a written determination by the Director, Division of Property Management and Construction, that extraordinary circumstances require the shift of services or that the failure to shift the services would result in economic hardship to the State of New Jersey, the Bidder shall be deemed in breach of contract, which contract will be subject to termination for cause under its contract with DPMC.

I further understand that this Certification is submitted on behalf of the Bidder in order to induce DPMC to accept a bid proposal, with knowledge that the State of New Jersey and DPMC are relying upon the truth of the statements contained herein.

I certify that, to the best of my knowledge and belief, the foregoing statements by me are true. I am aware that if any of the statements are willfully false, I am subject to punishment.

Bidder: AECOM Technical Services, Inc.
[Name of Organization or Entity]

By: Stephen W. Tull Title: Vice President

Print Name: Stephen W. Tull Date: September 5, 2018

Appendix A Key Staff Resumes

Sophia Jones, Assoc. AIA, LEED AP

Director of Historic Preservation

Education

MS, Historic Preservation, University of Pennsylvania, 2005
Bachelor of Architecture, University of Miami, 2003

Years of experience

13

Years with AECOM

2

Training

NSC Defensive Driving Course (9th Edition)
AECOM Field Safety
OSHA 40hr HAZWOPER
LEED Accredited Professional

Professional Affiliations

NJ Historic Sites Council, Chair, American Institute of Architects, Association for Preservation Technology



Professional history

Trained in both architecture and historic preservation, Sophia Jones has over 13 years of experience focused on the preservation of the built environment. Her broad range of experience includes preservation planning and historic research through the development of Preservation Plans, Historic Structure Reports, Vision Plans and National Register Nominations. She also manages all phases of building assessment, documentation and treatment implementation; as well as all phases of construction ranging from Schematic Design through Construction Administration. Ms. Jones has been a LEED Accredited Professional since 2011 and meets the Secretary of the Interior's Professional Qualification Standards for Historic Architecture and Historic Preservation [36 CFR61]. She is also a member of the New Jersey Historic Sites Council, a state advisory board, and currently serves as chair.

Selected project experience

West 127th Street Construction Protection Plan, New York City, NY

Date: Ongoing. **Role:** Project Coordinator. The project includes the development of a Construction Protection Plan for a 1916 Beaux Arts style Bank building that currently houses a church congregation. The project team is responsible for documenting the existing conditions of the historic structure. After noting the conditions, the team worked with the client, owner and general contractor to recommend protective measures that will prevent damage to the building while a multi-story housing structure is constructed immediately adjacent to the building.

Brumbaugh-Kendle Grove Farmstead Demolition, Airport Design Consultants, Hagerstown, MD

Date: 2017-2018. **Role:** Project Coordinator. The project included the recordation of eight structures at the Brumbaugh-Kendle-Grove Farmstead at Hagerstown Regional Airport, to document current conditions of the site and structures prior to demolition. The interiors and exteriors of all structures were thoroughly photographed and building footprints were documented through measured drawings. Archival documentation was completed and printed as required by the Maryland Historical Trust (SHPO).

Sharswood-Blumberg Redevelopment Open End, Philadelphia Housing Authority, General Electric, Philadelphia, PA

Date: 2017-Ongoing. **Role:** Project Coordinator. This project focuses on assisting the Philadelphia Housing Authority (PHA) with Section 106 review and compliance for historic architectural resources in the Sharswood-Blumberg neighborhood, as part of its Sharswood-Blumberg Choice Neighborhoods Transformation Plan. Work includes reconnaissance-level

documentation of the project area, select intensive-level survey, preparation of a cultural resource report, and facilitation of consulting party meetings. The AECOM team is also assisting the client with identifying local preservation priorities potentially eligible for inclusion on the Philadelphia Register of Historic Places. As Project Coordinator, Ms. Jones coordinated communication with the Client and facilitated the development and completion of project deliverables.

Bard How House Condition Assessment Report, Burlington County Historical Society, Burlington, NJ

Date: 2018-Ongoing. **Role:** Project Coordinator. The Bard-How house was constructed c.1743 and is currently owned by the Burlington County Historical Society. The team completed an interior and exterior condition assessment and documented the current condition of this historic structure by using hand-held tablet computers and illustration the conditions through photographs and annotated floor plans to identify areas of deterioration and damage. As Project Coordinator, Ms. Jones coordinated communication with the Client and facilitated the development and completion of project deliverables.

Rehabilitation of Necco Court Pedestrian Bridge, General Electric, Boston, MA

Date: 2017. **Role:** Historic Designer. The project includes working with GE and their design team to identify a preservation philosophy for the rehabilitation of the pedestrian bridge and to help guide the design of a new west elevation. A building chronology was completed to outline changes made to the structure over time to aid in the development in a preservation approach for the structure. A visual assessment of the structure was completed to identify the level of intact character-defining features available for rehabilitation. Recommendations were developed outlining elements to be restored that will contribute to the overall preservation of the structure.

U.S. Army Corps of Engineers, Remedial Design Services at the Roebling Steel Site, Roebling, NJ.

Date: 2017-Ongoing. **Role:** Project Coordinator. The project includes the completed interior and exterior rehabilitation of an existing structure that is proposed to be used as the new ticket office for the museum. The project also includes the design of a new structure to house and display artifacts.

Broad Brook Mill Site Environment Review, United Technologies Corporation Aerospace Systems (UTAS), East Windsor, CT

Date: 2017-Ongoing. **Role:** Historic Designer. Project consists of assistance in the completion of the Section 106 Connecticut Environmental Review Process for structures located at the National Register-listed Broad Brook Mill Site in East Windsor, Connecticut. Ms. Jones completed an interior and exterior building assessment of the structure.

DC Department of Transportation (DDOT) and National Park Service, 31st Street Bridge, C & O Canal, Rehabilitation Design, Washington, DC

Date: 2016-Ongoing. **Role:** Project Coordinator. The bridge project includes the rehabilitation of historic cast iron and wrought iron columns and cross bracing which required coordination with Structural and Civil Engineers to produce detailed drawings and specifications that are in compliance with the Secretary of Interior's Standards to ensure that pertinent character-defining features were retained during the rehabilitation process.

Amtrak, ADA Stations Program, Nationwide

Date: 2016-Ongoing. **Role:** Project Manager. The Amtrak ADA Stations Program manages the process of collaborative assessment, design, and construction of physical improvements to provide passengers with barrier-free access to Amtrak's intercity rail transportation throughout the US and Canada. A large number of the stations are either listed or eligible for listing on the National Register of Historic Places. Ongoing projects include managing the preparation of design documents and completion of construction for various ADA improvements at select train stations.

Historic Preservation Consulting Services for 9-19 Halsey Street, L+M Development Partners, Newark, NJ

Date: 2017. **Role:** Historic Designer. The project included providing historic design consultation for a ca. 1927 Art Deco commercial building site identified for redevelopment and new construction as an urban infill development project within the city of Newark.

Philadelphia Airport, Pavements and Grounds Facility, Philadelphia, PA

Date: 2016- Ongoing. **Role:** Project Coordinator. The project includes the design, programming, space planning, selection of finishes and furnishings, and preparation of bid drawings and specifications for three new structures to support the maintenance and repair program. The new Pavements and Grounds building includes new staff offices, locker rooms,

restroom, kitchen, and sleeping facilities. The additional two structures are designed for the storage and maintenance of large and small equipment and vehicles.

Additional project experience

Cedar Bridge Tavern, Preservation Plan and Rehabilitation Project, Barnegat NJ (Historic Building Architects)

Date: 2013-2016. **Role:** Project Manager. The Preservation Plan was completed in 2013 for the 1816 tavern building and site, providing Ocean County with a plan and vision for future public use and preservation of the structure and site. Design documents for the Restoration Project were completed 2013-2016 and included programming, space planning, product research, selection of finishes, site design, and preparation of bid drawings and specifications.

Museum of Early Trades and Crafts, Preservation Plan and Phases 1A and 2A Restoration Projects, Madison, NJ (Historic Building Architects)

Date: 2012-2016. **Role:** Project Manager. The Preservation Plan was completed in 2012, which focused on historic research as well as a condition assessment which identified locations of moisture ingress into the building through the use of non-destructive evaluation using infrared technology and visual condition assessment. Phases 1A and 2A Restoration Projects focused on the restoration of the exterior envelope including masonry repointing, new cold liquid applied roofs, slate roofing repairs, new copper gutters, downspouts, and associated flashing.

Saint Francis de Sales, Investigation Phase and Building Rehabilitation Phases 1-3, Philadelphia, PA (Historic Building Architects)

Date: 2012-2016. **Role:** Project Manager. An interior and exterior building condition assessment was completed for the 1907 building in 2007. The assessment used non-destructive evaluation to identify moisture ingress into the building, which included thermal imaging and visual condition assessment. All building leaks were mapped and masonry issues identified such as cracking and spalling. Inappropriate repairs were identified. Following the identification of deteriorated conditions, design drawings and specifications were prepared and construction completed through multiple phases to address masonry repairs and pointing, installation of new flat pan metal roofs, standing seam metal roofs, gutters and downspouts.

Phase I Exterior Roof and Window Project at the Present Day Club, Princeton, NJ (Historic Building Architects)

Date: 2015-2016. **Role:** Project Manager. The project included managing the building restoration of an 1834 early colonial dwelling, which included the installation of new cold liquid applied roofs, asphalt shingle roofs, standing seam metal roofs, sheet metal fabrication, restoration and painting of wood clapboard and repair and restoration of windows and shutters.

Bayada Interior Renovation Project, Moorestown, NJ (Historic Building Architects)

Date: 2015. **Role:** Project Manager. The interior renovation project transformed the early Italianate Victorian dwelling into a corporate headquarters. Careful detailing addressed the contemporary needs of the client while respecting and restoring the historic interior. The project included historic research, product research, selection of interior finishes and the development of bid drawings and specifications.

Camp Evans NHL Historic District Preservation Master Plan, Wall Township, NJ (Historic Building Architects)

Date: 2012-2015. **Role:** Project Manager. Camp Evans has a long and varied history with a large complex of buildings dating from 1914-1970. An exterior condition assessment was completed on over 80 buildings on the site. A complete interior and exterior assessment was completed on the main museum building, the Marconi Hotel. The plan provided prioritized recommendations for repairs based on identified safety issues, potential loss of building fabric, and the client's future plan for building usage on the site. Also identified were volunteer opportunities for each building, which will enable limited repairs and maintenance to be made until the structures can be completely restored.

Publications + Conferences

New Jersey History & Historic Preservation Conference Workshop - Camp Evans: Revealing the History and Preservation, 2014

Association for Preservation Technology Conference Tour - Restoring Urban Churches in Crisis, 2013

Association for Preservation Technology Conference Presenter - Linking Collaboration and Investigation to Achieve Successful Preservation Treatments, 2012

New Jersey Historic Preservation Conference Workshop - The "CSI" of Historic Preservation Field Workshop, 2011

Allison S. Rachleff

Architectural Historian

Education

MA, Historic Preservation Planning, Cornell University, 1994
BA, Comparative Literature, Smith College, 1987

Years of experience

24

Years with AECOM

20

Training

Photo-Documentation of Historic Structures
Oral History Workshop
Safety Trained for Roadway Worker Procedures for Conductor Flags/Contract Employees Working on Metr
North Property
AECOM Field Safety Training and Speak Up Listen Up Training, 2018

Professional Affiliations

New York Landmarks Preservation Foundation -- Board Secretary
Society for Industrial Archaeology
Cornell University - Historic Preservation Planning Alumni

Professional history

Ms. Rachleff has 24 years of experience providing cultural resource management and historic architectural expertise, including supervising and conducting fieldwork and historic research for architectural resource surveys, National Register nominations, preservation plans, and historic structures reports. She has prepared numerous cultural resource documents in compliance with federal, state, and local preservation regulations including Sections 106 and 110 of the National Historic Preservation Act reviews and agreement documents; Historic American Buildings Survey, Historic American Engineering Record, and Historic American Landscapes Survey reports; state-level documentation reports; integrated cultural resources management plans; historic building reuse studies; and maintenance plans. Ms. Rachleff has also prepared environmental assessments and environmental impact statements in compliance with the National Environmental Policy Act and other state and local environmental regulations. She meets the Secretary of Interior's Professional Qualification Standards for Architectural Historian and Historian (36 CFR Part 61). As a New York City resident, Ms. Rachleff sits on the Board of the New York Landmarks Preservation Foundation, a non-profit whose goal is to support the outreach mission of the New York City Landmarks Preservation Commission.

Selected project experience

Connecticut Department of Transportation, I-84 Hartford Project, Hartford, CT

Date: 2013-ongoing. **Role:** Oversaw collection of historic architectural resources data in central Hartford study area. Information collected included National Register-listed and eligible resources from Connecticut State Historic Preservation Office. Field view also conducted to identify potentially eligible resources. Prepared Cultural Resources Technical Report, and currently preparing Draft Environmental Impact Statement, Section 4(f) Evaluation, and Memorandum of Agreement (MOA).

New York City Police Department, Bomb Squad Headquarters, Environmental Assessment Survey (EAS) and Supplemental Studies to the EAS, New York, NY

Date: 2018 **Role:** Architectural Historian. Conducted intensive-level interior and exterior survey of National Register-eligible parking garage constructed in 1930; purpose of survey was to identify historic character-defining features worthy of preservation that should be retained by NYPD when they convert the building into the Bomb Squad Headquarters. Assessment conducted at request of NYPD, New York Landmarks Preservation Commission (LPC) and New York State Historic Preservation Office (SHPO).

New York City Economic Development Corporation, Lower Manhattan Coastal Resiliency Project, New York, NY

Date: 2017-2018 **Role:** Architectural Historian. Identified National Register-listed, National Register-eligible, and New York City Landmarks within study areas in Lower Manhattan that are slated for flood control projects. Baseline studies may form basis of environmental documentation.

New Jersey Department of Transportation, South Broad Street (US Route 206) Bridge Rehabilitation Project, Historic Bridge Alternatives Analysis, Trenton, NJ

Date: 2018 **Role:** Architectural Historian. Coordinated with engineers to prepare bridge alternatives analysis for National Register-eligible bridge at request of New Jersey Historic Preservation Office (NJHPO). Bridge is oldest crossing in City of Trenton, and goal of project is to rehabilitate bridge in a historically sensitive manner.

Port Authority of New York and New Jersey, Lincoln Tunnel Helix Replacement, Environmental Studies, Weehawken Township, Hudson County, NJ

Date: 2018 **Role:** Architectural Historian. Assisted with identifying National Register-listed, National Register-eligible and locally designated resources within study area, including National Register-eligible Lincoln Tunnel Helix; also assisted in initiating consultation with New Jersey Historic Preservation Office (NJHPO) in accordance with Section 106; upcoming tasks include delineation of area of potential effect (APE) and historic architectural resources survey within APE, assessment of effects and mitigation recommendations if necessary.

New York State Department of Transportation, Hutchinson Parkway and I-95 Mobility Improvements, Design Report and Individual Section 4(f) Evaluation, Bronx, NY

Date: 2016-2018. **Role:** Architectural Historian. Analyzed impacts of highway improvements on National Register-eligible resources in accordance with Section 106; oversaw preparation of individual Section 4(f) statement to justify use of parkland from Pelham Bay Park and Hutchinson River Parkway.

Metropolitan Transportation Authority - Bridges & Tunnels, Governors Island Ventilation Building Proposed Raised Seawall Scoping Study, New York, NY

Date: 2016 **Role:** Architectural Historian. Coordinated Section 106 consultation with SHPO regarding installation of flood protection wall at Governors Island vent building, a contributing resource to National Register-eligible Hugh L. Carey Tunnel. Vent building also located adjacent to Governors Island Historic District, a National Historic Landmark and New York City Landmarks Preservation Commission-designated historic district.

New York State Department of Transportation, Cross Bronx Expressway – Six Bridge Rehabilitations Between Boston Road and Bronx River Parkway Historic Architectural Resources Survey, PIN X727.07, Bronx, NY

Date: 2015-2017 **Role:** Architectural Historian. Managed preparation of cultural resources survey that National Register-eligibility of resources within project area, and identified contributing bridges to National Register-eligible Cross Bronx Expressway. Report prepared to assist client in complying with Section 106 of NHPA prior to project implementation.

US Navy, Building 1 and 12 Preservation Plan, Manchester, WA

Date: 2014-2015 **Role:** Architectural Historian. Led a multidisciplinary team of architects, engineers, and architectural historians in preparation of preservation plan for two World War II-era National Register-eligible industrial buildings. The plan was prepared in accordance with the Secretary of the Interior's standards for rehabilitation, and included historic overview, documentation of changes over time, existing conditions, identification of building problems, and remedies that would be implemented in a historically appropriate manner.

Naval Facilities Engineering Command Atlantic, Marine Corps Reserve Centers Cultural Resources Surveys, Various Locations in United States

Date: 2011-2014 **Role:** Architectural Historian. Oversaw team of architectural historians and archaeologists engaged in updating cultural resources surveys of MCRCs initially surveyed in 2004. Goal of surveys is to determine whether architectural and archaeological resources qualify as National Register eligible in accordance with Section 110 of the National Historic Preservation Act, and obtain concurrence from various State Historic Preservation Offices (SHPOs) on findings.

New York City Department of Parks and Recreation, Great Kills Park/Cedar Grove Beach Rehabilitation - Draft Environmental Impact Statement, Staten Island, NY

Date: 2013 **Role:** Architectural Historian. Assessed impacts of beach rehabilitation alternatives on National Register-eligible historic district characterized by early-20th-century beach bungalows and support buildings. Recommended mitigation measures, and coordinated with the New York State Historic Preservation Office.

New York City Economic Development Corporation, East Midtown Waterfront Esplanade Cultural Resources Survey, New York, NY

Date: 2012 **Role:** Architectural Historian. Oversaw and participated in preparation of historic architectural resources portion of cultural resources survey. Purpose of survey was to document historic architectural resources within proposed waterfront esplanade project area. Survey identified National Register-eligible resources, analyzed impact of project on resources, and recommended mitigation measures.

New York State Department of Transportation, New York State Thruway Authority, and Metro-North Railroad, Tappan Zee Bridge/I-287 Environmental Review, Rockland and Westchester Counties, NY

Date: 2003-2011 **Role:** Architectural Historian. Supervised collection of cultural resources data within the 30-mile project area at state and local repositories. Oversaw preparation of historic context for background report. Screened impacts of 150 alternatives on cultural resources within the project area and assisted in development of a shortlist of six alternatives for further study in draft environmental impact statement (EIS). Conducted an intensive-level cultural resources survey within the project area, including identification and documentation of National Register-eligible resources on New York SHPO blue forms; prepared detailed impacts analyses; and identified preliminary mitigation measures.

New Jersey Department of Transportation, US Route 30 (White Horse Pike), Egg Harbor City, NJ

Date: 2010 **Role:** Architectural Historian. Oversaw preparation of historic architectural resources survey within area of potential effect that would be impacted by drainage improvement. Identified National Register-eligible and potentially National Register-eligible historic district and assessed impacts.

New Jersey Department of Transportation, South Broad Street (US Route 206) Bridge over Assunpink Creek Rehabilitation - Historic Architectural Resources Survey, Trenton, NJ

Date: 2008-2009 **Role:** Architectural Historian. Managed survey that identified and evaluated historic bridge, buildings and districts in the area of potential effect (APE). Assessed impacts of project on historically significant resources and recommended mitigation measures.

New Jersey Department of Transportation, Pulaski Skyway Concept Development Study, Hudson and Bergen Counties, NJ

Date: 2008 **Role:** Architectural Historian. Oversaw collection of cultural resources data. Assisted NJDOT coordinate with the New Jersey State Historic Preservation Office to devise context-sensitive design for replacement of the National Register-listed Pulaski Skyway.

Westchester County Department of Planning, Proposed Water Quality Buffer Area, Reuse of Former Air National Guard Site, and New Deicing Facility - Draft Environmental Impact Statement, Westchester County, NY

Date: 2004 **Role:** Architectural Historian. Assessed the National Register eligibility of Westchester County Airport and surrounding properties in conjunction with the master plan update. Evaluated impacts of proposed action in accordance with the New York State Environmental Quality Review Act.

Connecticut Department of Transportation, Railroad Avenue Industrial District - Historic District Assessment, Bridgeport, CT

Date: 2001 **Role:** Architectural Historian. Reassessed boundaries of National Register-listed industrial district.

US Navy - Atlantic Division, National Register of Historic Places Nomination Form, Norfolk Naval Shipyard, VA

Date: 2001 **Role:** Architectural Historian. Managed and coordinated fieldwork and conducted research on the shipyard historic district with approximately 250 resources. Assisted the Navy in presenting nomination package to Virginia State Historic Preservation Office for eventual recommendation for listing the district in the National Register of Historic Places.

Emily Paulus Everett, AICP Senior Preservation Planner

Education

MA, Urban Affairs + Public Policy (Concentration in Historic Preservation), University of Delaware, 2001
BA, Art History, University at Rhode Island, 1997

Years of experience

17

Years with AECOM

3



Training

AECOM Field Safety, 2018
Section 106 Essentials Course, Advisory Council on Historic Preservation (Washington, DC), 2006
Tax Credit Workshop for State Reviewers, National Park Service, (Washington, DC) 2005
Preservation Leadership Training, National Trust for Historic Preservation (San Antonio, TX) 2005
Introduction to Section 106 Review: A Two-Day Training Course, Advisory Council on Historic Preservation (Washington, DC) 2003

Professional Affiliations

American Institute of Certified Planners (Certified Planner #29629)
American Planning Association
National Trust for Historic Preservation

Professional history

Ms. Everett manages the Preservation Planning team at AECOM's Historic Preservation Group and meets the Secretary of the Interior's Professional Qualification Standards for Architectural History and Preservation Planning. She has over 17 years of experience in historic preservation and community planning, including as Preservation Planner for the DC Office of Planning and the New Hampshire State Historic Preservation Office. Ms. Everett has authored National Register nominations and conducted cultural resource surveys, rehabilitation tax credit reviews, and Section 106 reviews throughout the Mid-Atlantic and New England regions. Ms. Everett's public-sector work focused on historic district administration and design review in both residential and commercial contexts. She has served as professional staff for several large urban historic districts, including the Capitol Hill Historic District in Washington, DC where she worked with property owners, developers, architects, and community organizations to ensure appropriate preservation treatments and compatibility with historic character. In her more recent private-sector work, she has served as Principal Investigator and Team Leader on numerous historic preservation studies and reports, including two innovative flood vulnerability assessments of historic resources in Pennsylvania.

Selected project experience

Rebuild by Design Meadowlands Flood Protection Project, Environmental Impact Statement and Section 106 Consultation, New Jersey Department of Environmental Protection (NJDEP), Bergen County, NJ

Date: 2017 (ongoing). **Role:** Senior Preservation Planner. The goal of this project is to reduce flood risk and increase the resiliency of the communities and ecosystems in the Meadowlands District utilizing a combination of green and grey infrastructure, flood walls, tide gates, closure gates, and a surge barrier and pump station. Ms. Everett drafted an Alternatives Assessments to assess impacts to historic resources for the Draft Environmental Impact Statement (DEIS) and initiated Section 106 consultation with the New Jersey State Historic Preservation Office (NJ SHPO). She also oversaw a reconnaissance-level field survey in the vicinity of proposed flood risk reduction improvements and managed staff developing intensive-level survey forms for resources determined potentially eligible for inclusion in the New Jersey and National Registers of Historic Places. Future work may include an assessment of effects for New Jersey and National Register-listed or eligible resources and coordination with Consulting Parties.

Philadelphia Housing Authority, Sharswood-Blumberg Neighborhood Redevelopment, Philadelphia, PA

Date: 2017 (ongoing). **Role:** Preservation Planning Manager. This project focuses on Section 106 compliance for historic architectural resources in the Sharswood neighborhood as part of the Sharswood-Blumberg Choice Neighborhoods Transformation Plan. Ms. Everett oversaw the field survey and identification effort of over 600 historic resources within the neighborhood and their evaluation of eligibility for both the National and Philadelphia Register of Historic Places. In addition, she is assisting PHA in establishing preservation priorities and applying various preservation tools to the project.

9 Halsey Street, L+M Development Partners, Newark, NJ

Date: 2017. **Role:** Preservation Planning Manager. The project includes assisting L+M Development Partners with their application to the Newark Landmarks and Historic Preservation Commission (LHPC). Ms. Everett oversaw the preparation of a property history and analysis report. She analyzed the proposed project's compliance with the Newark Zoning and Land Use Regulations and LHPC standards and provided technical assistance to the client in addition to public testimony at the LHPC workshop and public hearing.

Rehabilitation of the Necco Court Pedestrian Bridge, General Electric, Boston, MA

Date: 2017. **Role:** Senior Architectural Historian. The project includes working with General Electric (GE) and their design team to identify a preservation philosophy for the rehabilitation of a former pedestrian bridge at the former New England Confectionary Company complex in South Boston. Ms. Everett provided professional expertise and counsel to GE with regard to adherence of the proposed rehabilitation with the *Secretary of the Interior's Standards for Rehabilitation*. She also helped to guide GE through the regulatory review and approval process, which included reviews by the Massachusetts Historical Commission (MHC) and the Fort Point Channel Landmark District Commission (FPCLDC).

Fair Lawn Avenue Bridge Mitigation, New Jersey Department of Transportation, Paterson, NJ

Date: 2016-2017. **Role:** Senior Architectural Historian. Directed effort to satisfy the stipulations of a Memorandum of Agreement (MOA) between the Federal Highway Administration and the New Jersey State Historic Preservation Office, most notably the documentation of the county's last remaining through truss bridges. Prepared a National Register of Historic Places Nomination form for the Straight Street Bridge and developed a Preservation Plan for the Arch Street Bridge and Straight Street Bridge pursuant to the MOA.

Historic Building Flood Vulnerability Assessment Data Collection, Disaster Planning for Historic Properties, Pennsylvania State Historic Preservation Office, Cameron County, PA

Date: 2016-2017. **Role:** Survey Team Leader. Oversaw and participated in field survey of flood-prone properties throughout one of Pennsylvania's smallest and most remote counties, using a cloud-based mobile data collection platform. Recorded architectural details and flood-prone character-defining features for all surveyed properties in order to evaluate flood vulnerability and facilitate historically-sensitive mitigation measures.

Historic Building Flood Vulnerability Assessment Data Collection, Disaster Planning for Historic Properties, Pennsylvania State Historic Preservation Office, City of Philadelphia, PA

Date: 2015-2017. **Role:** Survey Team Leader. Collected building construction data citywide for 600 flood-prone buildings listed in the National Register of Historic Places and the Philadelphia Register of Historic Places. Oversaw and participated in field survey of all flood-prone properties, using a cloud-based mobile data collection platform accessed on Android tablets. Recorded architectural details and flood-prone, character-defining features for all surveyed properties in order to evaluate flood vulnerability and facilitate historically-sensitive mitigation measures. Coordinated with the Army Corps of Engineers to capture elevation data for flood-prone historic resources and authored final project report that analyzed flood-prone buildings by age, style, condition, integrity, and building typologies as well as intensity of flood risk.

Additional project experience

Neighborhood Heritage Districts: A Handbook for New Hampshire Municipalities, New Hampshire Division of Historical Resources, NH

Conceived, oversaw, and wrote a successful Johanna Favrot grant for the completion of a handbook for establishing Neighborhood Heritage (Conservation Overlay) Districts in New Hampshire. The handbook included criteria for establishing the district, detailed guidance on administering it, and a model ordinance.

Historic Design Standards for the Clinton Street Historic Commercial District, Town of Delaware City, DE

Co-authored design standards for the town's historic district following the approach developed by the National Main Street Center. Standards were focused on the Clinton Street commercial district in an effort to support economic revitalization.

Threatened Buildings Documented in Delaware, Delaware State Historic Preservation Office, DE

Directed intensive-level documentation of 13 threatened historic structures through measured drawings, historical research, and photographs. Organized field crews, directed and undertook documentation, translated measured drawings into CAD, conducted primary and secondary research, and wrote architectural descriptions.

Minute Man National Historical Park National Register of Historic Places Registration Form, National Park Service, Lincoln, Lexington, and Concord, MA

Co-authored an updated NR form for Minute Man National Historical Park. Defined new areas of significance and criteria under which the park is eligible for listing, and provided an accurate accounting of contributing and non-contributing resources to aid in the subsequent management of the park.

Community-Wide Historic and Architectural Survey of Aquinnah, Town of Aquinnah, Martha's Vineyard, MA

Served as Architectural Historian for a reconnaissance level survey, including research and recordation of all historical resources 50 years or older in the town of Aquinnah on Martha's Vineyard. Project involved historic and architectural context development and preliminary eligibility determinations.

Community-Wide Historic and Architectural Survey of Taftville and Occum Villages, Norwich, Connecticut

Served as Architectural Historian for a reconnaissance level survey, including research, and recordation of all historical resources 50 years or older in the historic mill villages of Taftville and Occum. Project involved historic and architectural context development and preliminary eligibility determinations.

Great Road National Register of Historic Places Registration Form, National Park Service, Lincoln, RI

Co-authored an NR form for a significant remnant of the historic Great Road, which ran from Providence, Rhode Island to Mendon, Massachusetts and remained in active use from 1683 until the 1940s.

Publications + Conferences

"Disaster Planning in the City of Philadelphia." Presented at the Keeping History Above Water Conference, Annapolis, MD, October 2017.

"Preservation and Preparedness: Identifying and Surveying Flood-Vulnerable Historic Resources." Presented at the Pennsylvania Statewide Conference on Heritage, Carlisle, PA, June 2017.

"A History of the Fredericktown Historic District." Presented to the City of Frederick Neighborhood Action Committee, Frederick, MD, September 2009.

"Introduction to Neighborhood Conservation Districts." Presented to the Atlantic Heights Neighborhood Association, Portsmouth, NH, February 2007.

"Local Historic Districts: Debunking the Myths." Presented at the Annual New Hampshire State Planning Conference, Manchester, NH, March 2006.

"Planning for Historic Preservation: Tools for Protecting Historic Resources." Presented at the New Hampshire Main Street Conference, Portsmouth, NH, October 2006.

"Preservation Planning Training for New Hampshire Regional Planning Commissions." Organized and delivered one-day training for state planners, Concord, NH, July 2006.

"Preserving Community Character." Workshop developed for the Nashua Regional Planning Commission, Nashua, NH, July 2006.

Guest Lecturer, Historic Preservation Graduate Program, George Washington Univ., Washington, DC, April 2005.

"Historic District Design Review: Case Studies in Context, Contrast, and Compatibility." Presented to the Historic Preservation Certificate Program, Goucher College, Towson, Maryland, November 2004.

"Ask the Staff: Owning a Property in a Washington, DC Historic District." Presented at "City as Home" Citywide Preservation Conference, Washington, DC, September 2004.

"The Role of Historic Preservation in the Redevelopment of Urban Brownfields." Presented at the National Brownfields Conference, Atlantic City, NJ, October 2000.

Samantha Kuntz, AICP

Preservation Planner

Education

MSHP, Historic Preservation, University of Pennsylvania, 2014
MCP, City and Regional Planning, University of Pennsylvania, 2014
BA, Sociology, Boston University, 2009
BS, Journalism Boston University, 2009

Years of experience

4.5

Years with AECOM

3

Training

Vermont Division for Historic Preservation Consultant Training (Burlington, VT), 2017
Section 106 Essentials Course, Advisory Council on Historic Preservation (Philadelphia, PA), 2016
OSHA 10 Hour General Industry Outreach Training

Professional Affiliations

American Planning Association (APA) - PA, Preservation Alliance for Greater Philadelphia, National Trust for Historic Preservation, The Urban Land Institute (ULI), Young Friends of the Preservation Alliance (Co-Chair)



Professional history

Since joining AECOM in 2015, Ms. Kuntz's work has prioritized resiliency planning for historic resources. Her background in urban development and experience with both planning and preservation provides a foundation for cultural resource management within the context of complex, challenging, and ever-changing landscapes. Ms. Kuntz holds master's degrees in both City and Regional Planning and Historic Preservation from the University of Pennsylvania, and is a certified planner under the American Planning Association's American Institute of Certified Planners. She meets the Secretary of the Interior's Professional Qualification Standards for Architectural History [36 CFR 61]. Ms. Kuntz currently serves as co-chair of the Young Friends of the Preservation Alliance in Philadelphia.

Selected project experience

Cultural Resources Online Database, Southeastern Pennsylvania Transportation Authority (SEPTA), Multi-Municipality, PA

Date: 2017-2018 **Role:** Preservation Planner. Provided research and project review for the creation of a GIS database and associated web application for historic resources, to be used as a proactive development planning tool. Responsible for comprehensive review of historic preservation recommendations identified within local comprehensive planning documents and associated planning reports for municipalities located along the SEPTA Regional Rail for inclusion in the database.

Sharswood-Blumberg Neighborhood, Philadelphia Housing Authority (PHA), Philadelphia, PA

Date: 2017-*Ongoing*. **Role:** Preservation Planner; Field Manager. This project focuses on Section 106 Compliance of above-ground cultural resources in the Sharswood-Blumberg Neighborhood of Philadelphia for the Philadelphia Housing Authority (PHA) as part of its Sharswood-Blumberg Choice Neighborhoods Transformation Plan. Work includes reconnaissance-level documentation of over 600 resources over 50 years of age in the project area and preparation of a cultural resource report. As Field Manager, Ms. Kuntz established priorities for the field survey, organized the survey methodology, and led the architectural historian field crews through the documentation of historic resources. Ms. Kuntz also contributed to data management and GIS mapping of this project, which included the development of the digital collection application used by the field crew to document the structures. The AECOM team is also assisting the client with identifying local preservation priorities potentially eligible for inclusion on the Philadelphia Register of Historic Places.

Inventory of Historical and Archaeological Collections, Delaware Division of Historical and Cultural Affairs, Dover, DE

Date: 2018 **Role:** Data Technician. Assist with data management efforts associated with upgrading collections data and outlining inventory procedures for over 90,000 historic objects and 7000 boxes of archaeological material, containing over 4.5 million artifacts. Responsible for desktop inventory data review that helped ensure data completeness for field crew.

William Tennent House (William Tennent House Association), Warminster, Bucks County, PA

Date: 2018. **Role:** Architectural Historian. Ms. Kuntz assessed the condition and National Register eligibility of an 18th century timber-frame home associated with prominent Presbyterian educator William Tennent and documented the dwelling in a Pennsylvania State Historic Preservation Office Historic Resource Inventory Form.

Rebuild by Design Meadowlands Flood Protection Project EIS and Section 106 Consultation, New Jersey Department of Environmental Protection (NJDEP), Bergen County, NJ

Date: 2017-2018. **Role:** Preservation Planner. This project seeks to implement a flood risk reduction strategy in the Meadowlands District using hard and infrastructure and soft landscaping to reduce the type of damage incurred by Super Storm Sandy in 2012. Responsibilities include crafting an Alternatives Assessments for to assess impact on above-ground cultural resources for the Draft Environmental Impact Statement (DEIS), as well as initiating the Section 106 process with the New Jersey State Historic Preservation Office (NJ SHPO). Ms. Kuntz also developed intensive-level survey forms for resources in the project area that are potentially eligible for inclusion in the New Jersey and National Registers of Historic Places.

Route 45 Bridge over Woodbury Creek Replacement, New Jersey Department of Transportation (NJDOT), Gloucester, NJ

Date: 2017-2018. **Role:** Architectural Historian. This project involves a reconnaissance-level survey of an 1892 stone bridge that is to be replaced, as well as identification and documentation of historic resources within a selected Area of Potential Effects of the proposed bridge replacement. Responsibilities include development of a survey report for review and concurrence by the New Jersey State Historic Preservation Office (NJHPO). Ms. Kuntz also wrote intensive-level survey forms for resources to further explore eligibility of resources in the project area, including one mid-20th century historic district.

Broad Brook Mill Site Environment Review, United Technologies Corporation Aerospace Systems (UTAS), East Windsor, CT

Date: 2017. **Role:** Architectural Historian. Project consists of assistance in the completion of the Section 106 Connecticut Environmental Review Process for structures located at the National Register listed Broad Brook Mill Site in East Windsor, Connecticut. Ms. Kuntz conducted background research and assisted in the preparation of a Building Assessment. Future work includes consultation with the State Historic Preservation Office (SHPO), East Windsor Township, and the public to discuss potential effects to the property.

Louisquisset Bridge Replacement, Rhode Island Department of Transportation (RIDOT), Lincoln, RI

Date: 2017. **Role:** Architectural Historian. This project involves documentation of a National Register-eligible bridge that is to be replaced and identification and documentation of historic resources within a selected Area of Potential Effects of the proposed bridge replacement.

Rehabilitation of Necco Court Pedestrian Bridge, General Electric, Boston, MA

Date: 2016-2017. **Role:** Architectural Historian. The project includes working with GE and their design team to identify a preservation philosophy for the rehabilitation of the pedestrian bridge and to help guide the design of a new west elevation. Ms. Kuntz conducted background research on the historic industrial property and contributed to the development of recommendations outlining elements to be restored that will contribute to the overall preservation of the structure.

Pennsylvania Turnpike Total Reconstruction & Widening Project MP 312-319, Pennsylvania Turnpike Commission (PTC), Chester County, PA

Date: 2014-2017. **Role:** Architectural Historian. A seven-mile corridor of roadway widening and reconstruction for the Pennsylvania Turnpike (I-76) through Charlestown, Upper Uwchlan, Uwchlan, and West Pikeland Townships in Chester County. Field survey work and background research were conducted for a Section 106 Effects Assessment of resources located within the project area.

Historic Preservation Consulting Services for 9-19 Halsey Street, L+M Development Partners, Newark, NJ

Date: 2017. **Role:** Architectural Historian. Conducted a Precedent Study for urban infill development projects in historic districts as a means of consultation for a ca. 1927 Art Deco commercial building facing redevelopment in Newark.

Beaver County Almshouse Documentation, Shell Chemicals Appalachia LLC, Beaver County, PA

Date: 2017. **Role:** Architectural Historian. This project involved significant resource documentation to offset adverse effects on three historic resources – Beaver County Almshouse, St. Joseph Lead Company Zinc Smelting Plant, and Merrill Lock No. 6 – as outlined in the Programmatic Agreement (PA) between the clients, US Army Corps of Engineers, and the Pennsylvania State Historic Preservation Office. Ms. Kuntz reviewed primary and secondary sources in order to prepare a historic context for the publication of the site's heritage for the local community.

Fair Lawn Avenue Bridge Mitigation, New Jersey Department of Transportation (NJDOT), Paterson, NJ

Date: 2017. **Role:** Preservation Planner. The project was undertaken to satisfy the stipulations of a Memorandum of Agreement (MOA) between the client (via the Federal Highway Administration) and the New Jersey State Historic Preservation Office, most notably the documentation of the county's last remaining through truss bridges. Ms. Kuntz prepared a National Register nomination form for the Arch Street Bridge and developed the historic preservation plan for Arch Street Bridge and Straight Street Bridge pursuant to the MOA.

Reconnaissance-Level Historic Architectural Survey for the PennEast Pipeline Project, UGI, NJ and PA

Date: 2016-Ongoing. **Role:** Architectural Historian. The project consists of Section 106 studies and the FERC review for a 114-mile natural gas pipeline in New Jersey and Pennsylvania. Ongoing coordination and development of reconnaissance-level survey for properties intersected by the alignment, as well as agency and client consultation. Responsibilities include the preparation of Pennsylvania Historic Resource Survey Forms and New Jersey Intensive-Level Survey Forms for properties within the Area of Potential Effect for Section 106 review.

Historic Building Flood Vulnerability Assessment Data Collection, Disaster Planning for Historic Properties, Pennsylvania State Historic Preservation Office (PA SHPO), Cameron County, PA

Date: 2016-2017. **Role:** Architectural Historian. Participant in the Commonwealth Disaster Planning for Historic Properties Initiative to identify historic assets and document all hazard-prone historic buildings in Cameron County for integration into a countywide FEMA-approved Hazard Mitigation Plan. Ms. Kuntz contributed to development of a carefully defined reconnaissance-level survey and recordation of hazard-specific information.

Historic Building Flood Vulnerability Assessment Data Collection, Disaster Planning for Historic Properties, Pennsylvania State Historic Preservation Office (PA SHPO), City of Philadelphia, PA

Date: 2015-2017. **Role:** Architectural Historian. Another project of the Commonwealth Disaster Planning for Historic Properties Initiative to produce a comprehensive inventory of documented flood-prone historic buildings in Philadelphia County for integration into a citywide FEMA-approved Hazard Mitigation Plan. Ms. Kuntz participated in surveying over 500 designated, vulnerable properties found within the 100-year and 500-year flood hazard areas, as well as providing background research and planning for an additional, non-disaster related historic resource survey for two planning districts in Philadelphia to advance the Philadelphia City Planning Commission's Citywide Vision. In 2017, the project was awarded the Preservation Education Award for Public Advancement of Preservation Knowledge by the Preservation Alliance of Greater Philadelphia.

Publications + Conferences

Building a Place For History, New Jersey History and Historic Preservation Conference. "Resiliency Planning for Flood Vulnerable Historic Resources," Paterson, NJ, June 2018.

Keeping History Above Water, "Considering Codes: Fairmount Water Works Case Study," Annapolis, MD, October 2017.

Pennsylvania Statewide Conference on Heritage, "Preservation Generation: How Young Preservation Organizations are Training Tomorrow's Preservationists." Carlisle, PA, June 2017.

Courtney Clark

Architectural Historian

Education

M.F.A., Historic Preservation, Savannah College of Art and Design, 2000

B.A., Art Studio major with Concentration in Design, University of South Carolina, 1998

Years of experience

18

Years with AECOM

5

Training

Federal Highway Administration/ Applying the Program Comment for Post-1945 Bridges.
PA Bureau for Historic Preservation/Cultural Resources Essentials Course,
Amtrak Contractor Safety and Security Training,
NJ DEP Internet Mapping,
NJ Historic Preservation Office Research Training

Professional Affiliations

National Trust for Historic Preservation, member
Vernacular Architecture Forum, member
Old York Road Historical Society, member

Professional history

Ms. Clark joined URS in November 2013. Previously, her work in the field of preservation included a position as Architectural Historian for John Milner Associates, Inc. in West Chester, Pennsylvania, a position as Architectural Historian for Cultural Heritage Research Services, Inc. in North Wales, Pennsylvania, and a position as Program Coordinator for Historic Wilmington Foundation in Wilmington, North Carolina. For the past 18 years Ms. Clark has had the ability to gain work experience throughout the much of the southern, Mid-Atlantic and New England states. Her involvement includes a wide variety of cultural resource projects for both the governmental and private sectors including public outreach, historical research, historic resource surveys, recordation, Section 106, Section 4(f), preservation planning, emergency management, and telecommunication projects.

Selected project experience

White Clay Creek Bridge Cultural Resources Project, Delaware Department of Transportation (DelDOT), New Castle County, DE

Date: 2018-ongoing. **Role:** Architectural Historian. Project included a Phase I archaeological survey and architectural evaluation for the proposed construction of a pedestrian bridge over White Clay Creek adjacent to Paper Mill Road providing a direct connection for pedestrians and bicyclists between Curtis Mill Park and Olan Thomas Park. A report was prepared on the archaeological survey within the APE and the architectural National Register eligibility documentation of White Clay Creek Dam 4 in order to meet Section 106 compliance responsibilities.

Upland 230-13KV Substation Energy Company Environmental Review, PECO Energy Company, Philadelphia, PA

Date: 2018-ongoing. **Role:** Architectural Historian. Conducted windshield survey and assisted with the completion of a Project Review Form for the Pennsylvania Historical & Museum Commission (PHMC) State Historic Office (SHPO), Environmental Review Division. The review included background research of previously recorded resources as well as the assessment of unidentified or potential historic resources that bordered the site of the proposed substation.

US 13 Lochmeath Way to Puncheon Run Project, DelDOT, Kent County, DE

Date: 2017-ongoing. **Role:** Architectural Historian. Performed reconnaissance survey and assisted in preparations of a Management Summary, then assisted in the preparations of an intensive-level survey and preparation of National Register eligibility documentation and report in order to meet Section 106 compliance responsibilities. Project included

intensive-level documentation and preparation of DE SHPO Cultural Resources Survey (CRS) forms for 40 resources and reconnaissance-level survey documentation on 86 resources, totalling recordation of 116 resources.

Park Avenue Relocation Project, DelDOT, Sussex County, DE

Date: 2017-ongoing. **Role:** Architectural Historian. Conducted reconnaissance survey and assisted with the completion of a Management Summary, then assisted in the preparations of an intensive-level survey and preparation of National Register eligibility documentation and report in order to meet Section 106 compliance responsibilities. Project has included the documentation and preparation of DE SHPO Cultural Resources Survey (CRS) forms for 67 resources.

Historic Resources Survey Project, Heritage Conservancy, Abington Township, Montgomery County, PA

Date: 2015-ongoing. **Role:** Architectural Historian (volunteer). This on-going project has entailed conducting an inventory of all historic buildings throughout Abington Township, gathering data on resources through research using public records, historic maps and written material, and field survey. The HRS Project has increased public awareness and education, but also will be used to direct future studies, inform planning processes, and make decisions about development activities that might affect those resources. Once completed, this information will be compiled and entered into a database, which will be available to the public through the PHMC/BHP website.

Historic Architectural Survey, PennEast Pipeline Project, UGI, NJ and PA

Date: 2014-ongoing. **Role:** Architectural Historian. The project consists of Section 106 studies and the FERC review for a 114-mile natural gas pipeline in New Jersey and Pennsylvania, involving survey of over 200 properties. Ongoing support with historic architectural survey for properties intersected by the alignment, as well as agency and client consultation. Section 106 documentation is currently under SHPO review. Panasonic ToughPads and Trimble YUMA GPS units used to capture locational data and fill out PHMC Abbreviated Historic Resource Survey Forms and NJHPO Base Forms directly in the field.

Proposed Petrochemicals Complex, Shell Chemicals Appalachia LLC, Beaver County, PA

Date: 2013-ongoing. **Role:** Architectural Historian. Prepared a Pennsylvania Historic Resource Survey Form for a mid-19th century county poor house. Also worked on a three-dimensional digital model of the re-creation of historic interiors of the poor house. Most recently have been assisting in the organizational efforts of interviews by local residents about the property and general area.

Disaster Planning for Historic Properties: Historic Resource Survey, Pennsylvania Bureau of Historic Preservation (PA SHPO), Monroe, Bedford, and Cameron Counties, PA

Date: 2015-2017. **Role:** Architectural Historian. A project of the Commonwealth Disaster Planning for Historic Properties Initiative to produce a comprehensive inventory of documented flood-prone historic buildings in for integration into a countywide FEMA-approved Hazard Mitigation Plans. Work included identification and data collection of architectural resources in flood-zone identified areas and collecting information about their hazard-prone character defining features (in the event of floods, wildfires, and severe wind events).

FEMA-NISTAC Deployment, Charleston, WV

Date: 2017. **Role:** Architectural Historian. This deployment pertained to long term recovery efforts to local communities resulting from severe storms, flooding, landslides and mudslides that occurred in June of 2016. Responsibilities included working with a School Task Force on two historic schools planned for demolition. Memorandum of Agreements were drafted, historic contexts for both schools were created, as well as, documentation of both schools. Consultation with local, state, and federal agencies was involved.

King of Prussia Rail Project, SEPTA, Delaware and Montgomery Counties, PA

Date: 2016. **Role:** Architectural Historian. This project is a proposed extension of the Norristown High Speed Line into King of Prussia in Upper Merion Township, Montgomery County, and related improvements at the 69th Street Transit Center in Upper Darby Township, Delaware County. Work included research, intensive-level survey, and assistance in the preparation of Pennsylvania Historic Resource Survey Forms.

Pennsylvania Turnpike/I-95 Interchange Project (Stage 2), KCI Technologies, Bucks County, PA

Date: 2016. **Role:** Architectural Historian. This project entailed the construction of a new interchange and related improvements in Bucks County, Pennsylvania and Burlington County, New Jersey. The Section 106 evaluation of Stage 2 construction activities included research, intensive-level survey, and preparation of Pennsylvania Historic Resource Survey Forms.

Intensive-Level Architectural History Survey, Sanitary Sewer and Potable Water Lines Project, Deepwater Generating Station, Environmental Consulting & Technology, Inc., Pennsville Township, Salem County, NJ

Date: 2015-2016. **Role:** Architectural Historian. Worked conducted for Environmental Consulting & Technology, Inc. Responsibilities included research at various state and local repositories to research the history of the 86 Church Landing Road property. A site visit was performed and a NJHPO architectural survey form was completed for the 86 Church Landing Road Property recommending eligibility for listing on the National Register of Historic Places.

New Jersey Hurricane Sandy Rehabilitation, Reconstruction, Elevation and Mitigation (RREM) program, New Jersey Department of Environmental Protection, Multiple Counties, NJ

Date: 2013-2016 **Role:** Architectural Historian. Responsibilities included detailed review and assessment of Hurricane Sandy Community Development Block Grant applications. Documentation included physical descriptions, National Register Eligibility determinations, and effects assessments for historic buildings.

Kaitlin Pluskota

Architectural Historian

Education

MSHP, Historic Preservation, University of Pennsylvania, 2015
BA, History, University at Buffalo, 2013

Years of experience

3

Years with AECOM

2

Training

Section 106 Essentials Course, Advisory Council on Historic Preservation (Philadelphia, PA), 2016
OSHA 10 Hour General Industry Outreach Training

Professional Affiliations

APT New England Chapter

Professional history

Ms. Pluskota joined AECOM Corporation in 2015 and has three years' experience in historic preservation and cultural resources management. She recently moved to New Hampshire to join AECOM's New England Cultural Resources Group, located in Chelmsford, Massachusetts. Prior to joining AECOM Ms. Pluskota's work focused on conservation science and historic site management. With her background in conservation science and site management, her cultural resource management practices focuses on the revival and protection of historic resources and communication of their importance to our culture and communities.

Her current responsibilities include the survey, research, assessment, evaluation and documentation of historic buildings and neighborhoods. She has surveyed and evaluated hundreds of historic properties and evaluated eligibility in accordance with National Register criteria. Ms. Pluskota has extensive experience with effects assessments, especially as they pertain to energy and transmission projects and has experience executing mitigation documents. She is proficient in historical research using primary and secondary sources, such as deeds, wills, tax records, atlases and maps, newspapers, and published histories and is trained in the use of digital devices for large scale project survey. She meets the Secretary of Interior's Professional Qualification Standards for Architectural Historian and Historian [36 CFR 61].

Selected project experience

Town of Stockbridge Stormwater Improvements, Stockbridge, MA

Date: *Ongoing*. **Role:** Researcher & field crew. This project includes archaeological investigations for a FERC-funded drainage improvement project in the Town of Stockbridge. Ms. Pluskota conducted historical research on Stockbridge Academy building as part of background studies and assisted with archaeological field work.

Barton & Broad Street Bridge Replacement, RIDOT, Pawtucket, RI

Date: *Ongoing*. **Role:** Architectural Historian. This project involves documentation of two NR-eligible bridges that are slated to be demolished and replaced. The project process will involve identification and documentation of historic resources, and a Phase I/II Archaeological Survey within a selected APE of the proposed bridge replacements and mitigation procedures. Ms. Pluskota will lead architectural history field survey and documentation efforts for the bridges.

Louisquisset Bridge Replacement, RIDOT, Lincoln, RI

Date: *2017-ongoing*. **Role:** Architectural Historian. This project involves documentation of a NR-eligible bridge that is to be replaced and identification and documentation of historic resources, and a Phase I/II Archaeological Survey within a selected APE of the proposed bridge replacement. Ms. Pluskota led above-ground field survey efforts and completed a Due Diligence

Report on the findings of the field survey. Future steps will involve mitigation activities including the completion of a Section 106 Documentation Report, Draft MOA, and NEPA and 4(f) evaluation.

Natick Center Station Accessibility Improvements, MBTA, Natick, MA

Date: 2017-ongoing. **Role:** Architectural Historian. This project includes improvement of station to include new accessible platforms within a NR-eligible Historic District and documentation as assessment of possible historic resources within the project APE. Ms. Pluskota completed initial investigations using field survey and desktop research methods to identify historic resources within the APE and completed a report with her findings.

Park Avenue Relocation Project, Delaware Department of Transportation, Sussex County, DE

Date: 2017-ongoing. **Role:** Architectural Historian. This project includes reconnaissance survey, intensive-level survey, and National Register eligibility recommendations. Ms. Pluskota assisted with survey data management and completion of descriptions of surveyed resources.

Farnum Pike Bridge Replacement, RIDOT, North Smithfield, RI

Date: 2016-ongoing. **Role:** Architectural Historian. This project involves documentation of a NR-eligible bridge that is to be replaced and identification and documentation of historic resources within a selected APE of the proposed bridge replacement. Current work for Ms. Pluskota involves the completion of a Section 106 Documentation Report and MOA for the mitigation of adverse effects to the NR-eligible Farnum Pike Bridge. Future steps will include further mitigation activities, NEPA and 4(f) evaluation.

Sheldon Springs Hydroelectric Project, Missisquoi, LLC, Sheldon Springs, VT

Date: 2017. **Role:** Principal Architectural Historian. This project included the examination of several historic structures and sites for the completion of a yearly Cultural Resources Management Plan Assessment for Missisquoi, LLC for the hydroelectric plant located on the Missisquoi River in Sheldon Springs. As the Architectural Historian Ms. Pluskota performed in-field assessments of the conditions and integrity of eleven contributing historic structures and completed a report with her findings.

Route 45 Bridge over Woodbury Creek Replacement, New Jersey Department of Transportation (NJDOT), Gloucester, NJ

Date: 2017-Ongoing. **Role:** Architectural Historian. This project involves a reconnaissance-level survey of an 1892 stone bridge that is to be replaced, as well as identification and documentation of historic resources within a selected Area of Potential Effects of the proposed bridge replacement. Ms. Pluskota has assisted with field survey and research efforts.

Williams Gateway Expansion Project, NJ

Date: 2017. **Role:** Architectural Historian. This project included field survey, reporting, and SHPO coordination for proposed updates to multiple energy stations in New Jersey. Ms. Pluskota was involved in field survey, effects assessment, and report writing efforts for this project.

Reconnaissance-Level Historic Architectural Survey for the 871/872 Transmission Line Rebuild, NYSEG, Clinton County, NY

Date: 2017. **Role:** Architectural Historian. This project included survey, documentation, and identification of all historic resources within a one-mile APE of the proposed transmission line work with an emphasis on potential visual effects the rebuilt line may have on those resources that may be eligible for the NRHP. Ms. Pluskota performed background research and led field work during survey efforts of historic properties and is a co-writer of the final report.

Roebbing OU4 Historic Artifact Mitigation, Roebbing, NJ

Date: 2017-Ongoing. **Role:** Conservator. The project involves documentation of artifacts related to the Roebbing Steel Plant and preparation of a conservation plan for each object. Ms. Pluskota was responsible for performing background research and documenting over 100 objects and their conditions on site and for making preliminary recommendations for their conservation.

Bedford North Central Visual Effects Assessment Study, FirstEgnergy, Bedford County & Somerset County, PA

Date: 2017-2018. **Role:** Architectural Historian. This project involved preparation of a Cultural Resources Notice and Visual Effects Assessment in relation to a project that proposed to rebuild a ten-mile portion of transmission line and build a new

five-mile stretch of line through Bedford and Somerset Counties. Ms. Pluskota performed background research, identified historic resources in the project area, prepared a Cultural Resources Notice for the proposed transmission line work, and led field survey efforts to identify historic resources within the APE with an emphasis on potential visual effects the proposed work may have on resources that may be eligible for the NRHP.

Columbia City Visual Assessment Study, NYSEG, Columbia County, NY

Date: 2017. **Role:** Architectural Historian. This project involved documentation of twenty previously identified NRHP-eligible resources within a one-mile APE of proposed transmission line work in Columbia County, New York. Documentation included photographs and information about each resource in addition to views toward the proposed transmission line work to document potential effects the proposed work may have on those resources. Ms. Pluskota led field the field survey effort and co-wrote the final report.

Breinigsville to Albutis Visual Assessment Study, PPL, Lehigh County, PA

Date: 2017-Ongoing. **Role:** Architectural Historian. This project involved preparation of a Cultural Resources Notice and Visual Effects Assessment in relation to a project that proposed rebuild a portion of transmission line through Lehigh County. Ms. Pluskota performed background research, identified historic resources in the project area, prepared a Cultural Resources Notice for the proposed transmission line work, led field survey efforts to identify historic resources within the APE with an emphasis on potential visual effects the proposed work may have on resources that may be eligible for the NRHP, and prepared a Visual Effects Report for the proposed work.

Stanton to Brookside, PPL, Northampton County, PA

Date: 2016-2017. **Role:** Architectural Historian. This project involved preparation of a Cultural Resources Notice and Visual Effects Assessment in relation to a project that proposed rebuild a portion of transmission line through Northampton County. Ms. Pluskota performed background research, identified historic resources in the project area, prepared a Cultural Resources Notice for the proposed transmission line work, led field survey efforts to identify historic resources within the APE with an emphasis on potential visual effects the proposed work may have on resources that may be eligible for the NRHP, and prepared a Visual Effects Report for the proposed work.

Elwyn to Wawa, Septa, Delaware County, PA

Date: 2016. **Role:** Architectural Historian. AECOM is providing services for a new station at Wawa, Pennsylvania and an adjacent maintenance support building at Lenni, Pennsylvania for the western expansion of the R3 - Elwyn line. This project involved identification and documentation of historic resources along a portion of rail line, the West Chester & Philadelphia, originally established in 1858. Ms. Pluskota was responsible for portions of the field survey, preparation of an HRSF form, and contributed to the final report.

Pennsylvania Turnpike Northeast Extension Milepost A38-A44, PA DOT, Montgomery and Bucks Counties, PA

Date: 2016. **Role:** Architectural Historian. This project consisted of cultural resource evaluations needed to determine the extent of any potential impacts to historic and archeological resources related to the proposed alteration of the Pennsylvania Turnpike through Montgomery and Bucks Counties. Ms. Pluskota completed an effects analysis on a NR-eligible farm property within the project's APE.

Chester County Bridge 175 (Creek Road over Pickering Creek), PA DOT, Chester County, PA

Date: 2016-Ongoing. **Role:** Architectural Historian. An ongoing project to complete cultural resource evaluations of three historic resources within the APE of the proposed replacement of Chester County Bridge 175 on Creek Road in Phoenixville. Ms. Pluskota completed background research on three already identified historic resources, formation of property histories, field survey, figure creation, preparation of a Cultural Resources Assessment and National Register Eligibility Forms.

I-95 Central & South Philadelphia, PA DOT, Philadelphia County, PA

Date: 2016-Ongoing. **Role:** Architectural Historian. An ongoing project to complete cultural resource evaluations needed to determine the extent of any potential impacts to historic and archeological resources related to the proposed alteration of I-95 through Philadelphia. Ms. Pluskota aided in the field survey effort of over 100 NRHP-eligible and newly identified properties and Historic Districts throughout several neighborhoods in Philadelphia, evaluation of potentially eligible buildings and the preparation of a report to document what was found.

Reconnaissance-Level Historic Architectural Survey for the PennEast Pipeline Project, UGI, NJ and PA

Date: 2014-*Ongoing*. **Role:** Architectural Historian. The project consists of Section 106 studies and the FERC review for a 114-mile natural gas pipeline in New Jersey and Pennsylvania. Ongoing support with reconnaissance-level survey for properties intersected by the alignment, as well as agency and client consultation. Section 106 documentation is currently under SHPO review. Ms. Pluskota completed reconnaissance level surveys of properties intersected by the alignment and completed PA and NJ HRSF forms.

Historic Building Flood Vulnerability Assessment Data Collection, Disaster Planning for Historic Properties, Pennsylvania State Historic Preservation Office (PA SHPO), City of Philadelphia, PA

Date: 2016-2017. **Role:** Architectural Historian. Another project of the Commonwealth Disaster Planning for Historic Properties Initiative to produce a comprehensive inventory of documented flood-prone historic buildings in Philadelphia County for integration into a citywide FEMA-approved Hazard Mitigation Plan. Ms. Pluskota participated in surveying designated, vulnerable properties found within the 100-year and 500-year flood hazard areas, and resources within two planning districts in Philadelphia to advance the Philadelphia City Planning Commission's Citywide Vision. In 2017, the project was awarded the Preservation Education Award for Public Advancement of Preservation Knowledge by the Preservation Alliance of Greater Philadelphia.

I-84 State Project No. 63-644, Connecticut Department of Transportation, Hartford, CT

Date: 2016-*Ongoing*. **Role:** Architectural Historian. An ongoing project to complete cultural resource evaluations needed to determine the extent of any potential impacts to historic and archeological resources related to the proposed alteration of I-84 through Hartford that will address the highway's structural deficiencies, improve traffic operations and safety, reduce congestion, all while maintaining access for the City of Hartford and adjacent communities. Ms. Pluskota aided in the field survey effort of over 100 properties, evaluation of potentially eligible buildings and the completion of Historic Resource Forms.

Historic Properties Disaster Plan, Pennsylvania Historical & Museum Commission, Monroe County, Bedford County, & Cameron County, PA

Date: 2015-2017. **Role:** Architectural Historian. A project of the Commonwealth Disaster Planning for Historic Properties Initiative to produce a comprehensive inventory of documented flood-prone historic buildings in for integration into a countywide FEMA-approved Hazard Mitigation Plans. Work included identification and data collection of architectural resources in flood-zone identified areas and collecting information about their hazard-prone character defining features (in the event of floods, wildfires, and severe wind events. Ms. Pluskota contributed to survey efforts and recordation of hazard-specific information as well as preparation of the final deliverables.

Samuel A. Pickard

Historian

Education

BA, History, La Salle University, 2013
Certificate in Historic Preservation, Bucks County Community College,
2017

Years of experience

5

Years with AECOM

5

**Training**

Section 106 Essentials Course, Advisory Council on Historic Preservation (Philadelphia, PA), 2016
OSHA 10 Hour General Industry Outreach Training, 2017
AECOM 2-Hour Field Safety
Williams LLC, E & C East Safety & Environmental Training

Professional Affiliations

Young Friends of the Preservation Alliance (Steering Committee), Vernacular Architecture Forum, Historical Society of Pennsylvania, Pennsylvania Railroad Technical & Historical Society (Philadelphia Chapter), Reading Company Technical & Historical Society, Railroad Station Historical Society

Professional history

Mr. Pickard has five years of experience as a historian and meets the Secretary of the Interior's Professional Qualification Standards for History. His experience includes fieldwork and historic research for historic architectural resource surveys, archaeology reports, and historic structures reports. He has extensive experience conducting research using primary and secondary sources and has authored contextual and site-specific histories for cultural resource reports in Pennsylvania, New Jersey, and Delaware. Mr. Pickard has conducted research at state historic preservation offices as well as county and municipal repositories, local historical and genealogical societies, and archives of various religious organizations and universities.

Selected project experience

Archaeological Investigations for the I-95/Girard Ave. Improvements Project, Pennsylvania Department of Transportation, Philadelphia, PA

Date: 2013–*Ongoing*. **Role:** Historian. Researching and authoring property histories for roughly 100 urban properties and historic contexts on the neighborhoods in which they were located, for ongoing Phase III archaeological investigations along a three-mile linear project area undertaken for the Pennsylvania Department of Transportation. Mr. Pickard has participated in numerous public outreaches across the greater Philadelphia metropolitan area.

US 13 Lochmeath Way to Puncheon Run Project, Delaware Department of Transportation (DelDOT), Kent County, DE

Date: 2018. **Role:** Historian. The project involves Section 106 compliance for above-ground cultural resources as part of studies for widening and intersection improvements to U.S. 13 in Dover and Camden, Delaware. Mr. Pickard researched and authored a historic overview and property histories for the cultural resources report, with particular attention paid to the African-American communities of Brinkley Hill and Star Hill, a Methodist camp meeting ground, and post-World War II developments to house military personnel stationed at Dover Air Force Base.

SEPTA Cultural Resource Database, Southeastern Pennsylvania Transportation Authority (SEPTA), Bucks, Chester, Delaware, Montgomery, and Philadelphia Counties, PA

Date: 2015–*Ongoing*. **Role:** Historical Researcher. Conducted research for a Cultural Resource GIS Database developed for SEPTA. Collected data and from numerous repositories including the Pennsylvania Historical and Museum Commission, the

Historical Society of Pennsylvania, and county, municipal, and neighborhood historical societies. Mr. Pickard also cataloged and described stations and junctions in the system abandoned since SEPTA's founding in 1965.

SEPTA Elwyn-Wawa Extension, Southeastern Pennsylvania Transportation Authority (SEPTA), Delaware County, PA

Date: 2018. **Role:** Historian. Project involves cultural resources investigations along a former railroad line which SEPTA is preparing to return to regular commuter service. Mr. Pickard researched and authored a brief history of the abandoned Pennsylvania Railroad Octoraro Branch, as a portion of its right of way will be used to create an access road for the new Wawa Station.

Route 45 Bridge over Woodbury Creek Replacement, New Jersey Department of Transportation (NJDOT), Gloucester County, NJ

Date: 2018. **Role:** Historical Researcher. This project involves a reconnaissance-level survey of an 1892 stone bridge that is to be replaced, as well as identification and documentation of historic resources within the Area of Potential Effects of the proposed bridge replacement. Mr. Pickard constructed chains of title for a number of historic resources in the APE and contributed to further property history research.

Park Avenue Reroute Project, Delaware Department of Transportation (DelDOT), Georgetown, DE

Date: 2017–2018. **Role:** Historian/Historic Resources Surveyor. The project involves Section 106 Compliance for above-ground cultural resources as part of studies for rerouting Park Avenue in Georgetown, Delaware. Mr. Pickard participated in intensive-level documentation of resources in the APE constructed before 1972 and authored a historic overview and property histories for the cultural resources report.

Sharswood-Blumberg Redevelopment Open End, Philadelphia Housing Authority, Philadelphia, PA

Date: 2017–2018. **Role:** Historian/Historic Resources Surveyor. This project focuses on Section 106 Compliance of above-ground cultural resources in the Sharswood-Blumberg Neighborhood of Philadelphia for the Philadelphia Housing Authority (PHA) as part of its Sharswood-Blumberg Choice Neighborhoods Transformation. Mr. Pickard researched and authored a contextual history and development narrative of the Sharswood neighborhood, paying particular attention to its enduring legacy as a center of Philadelphia's early jazz culture and its importance to baseball history. He also participated in the reconnaissance-level documentation of resources over 50 years of age in the project area.

Rebuild by Design Meadowlands Flood Protection Project, New Jersey Department of Environmental Protection (NJDEP), Bergen County, NJ

Date: 2017. **Role:** Historian. This project seeks to implement a flood risk reduction strategy in the Meadowlands District using hard and infrastructure and soft landscaping to reduce the type of damage incurred by Hurricane Sandy in 2012. Mr. Pickard researched and developed an intensive-level survey form for resource in the project area that is potentially eligible for inclusion in the New Jersey and National Registers of Historic Places.

Phase I Cultural Resource Investigation for Rio Grande–Cape May Transmission Line Rebuild & Upgrade Projects, Atlantic City Electric, Cape May County, NJ

Date: 2017. **Role:** Historical Researcher. Collected and summarized cultural resources data of known archaeological and historic architectural resources within the project area at the New Jersey Historic Preservation Office and New Jersey State Museum for a Phase IA archaeological investigation.

Reconnaissance-Level Historic Architectural Survey for Atlantic Sunrise Pipeline Project, Williams Transco, PA

Date: 2014–2017. **Role:** Historian/Historic Resources Surveyor. Participated in a reconnaissance-level historic architectural survey throughout central and northern Pennsylvania. Was a member of a team using Trimble YUMA GPS units to capture locational data and record basic physical information and preliminary eligibility assessments on the properties. Assisted in processing survey data and obtained maps of resource locations for Historic Resource Inventory Forms being completed for the Pennsylvania Bureau of Historic Preservation. Researched and authored historic agricultural contexts for the various agricultural regions crossed by the historic architectural survey corridor, and conducted deed research for properties in Columbia and Schuylkill Counties.

Disaster Planning for Historic Properties, Pennsylvania Historical & Museum Commission, Bedford, Monroe, and Cameron Counties, PA

Date: 2015–2017. **Role:** Historian. Collected cultural resources data on known historic architectural resources located within the project area for each county at the Pennsylvania Historical & Museum Commission. Researched and authored background histories for Monroe County municipalities and historic contexts for Bedford and Monroe Counties. Managed correspondence related to public outreach for Monroe County.

Fair Lawn Avenue Bridge Mitigation, New Jersey Department of Transportation, Paterson, NJ

Date: 2017. **Role:** Historian. The project was undertaken to satisfy the stipulations of a Memorandum of Agreement (MOA) between the client (via the Federal Highway Administration) and the New Jersey State Historic Preservation Office, most notably the documentation of the county's last remaining through truss bridges. Mr. Pickard authored a historic context on the effects of early 20th century floods on the City of Paterson, particularly its bridges, for a bridge replacement project.

CSXT over Overpeck Creek, CSX Transportation, Ridgefield Borough and Ridgefield Park Village, NJ

Date: 2016. **Role:** Historical Researcher. Conducted background research and collected cultural resources data on known historic architectural resources located within the APE of a proposed railroad bridge replacement at the New Jersey Historic Preservation Office.

Cultural Resources Investigations for the King of Prussia Rail Project, Southeastern Pennsylvania Transportation Authority (SEPTA), Montgomery County, PA

Date: 2016. **Role:** Historical Researcher. Collected cultural resources data on known historic architectural resources located within the project area at the Pennsylvania Historical & Museum Commission for study relating to the construction of a new commuter rail line in Montgomery County, Pennsylvania.

Reconnaissance-Level Historic Architectural Survey for the Sunbury Pipeline Project, UGI, Lycoming, Montour, Northumberland, Union, and Snyder Counties, PA

Date: 2016. **Role:** Historian/ Historic Resources Surveyor. Participated in a reconnaissance-level survey of residential and rural environments for the identification, documentation and evaluation of historic aboveground resources along a proposed 30-mile gas pipeline. Conducted research at Lycoming and Montour Counties' recorder's offices to establish chains of title for multiple properties crossed by the proposed pipeline's right-of-way. Researched and co-authored histories for multiple properties.

Disaster Planning for Historic Properties, Pennsylvania Historical & Museum Commission, Philadelphia, PA

Date: 2016. **Role:** Historical Researcher. Collected cultural resources data on known historic architectural resources within the project area at the Pennsylvania Historical & Museum Commission for an architectural survey of historic structures within flood zones.

Reconnaissance-Level Historic Architectural Survey for the PennEast Pipeline Project, UGI, PA and NJ

Date: 2014–2016. **Role:** Historical Researcher/Historic Resources Surveyor. The project consists of Section 106 studies and the FERC review for a 114-mile natural gas pipeline in New Jersey and Pennsylvania. Participated in a reconnaissance-level historic architectural survey throughout northern Pennsylvania and New Jersey. Mr. Pickard also collected cultural resources data on known archaeological and historic architectural resources within the project area at the New Jersey Historic Preservation Office and New Jersey State Museum, and conducted background and deed research on properties within the project area.

Historic Architectural Survey for Pennsylvania Turnpike Northeast Extension Full Depth Roadway Reconstruction, Pennsylvania Turnpike Commission, Bucks County, PA

Date: 2014–2015. **Role:** Historian. Researched and authored histories for numerous properties within the project area and co-authored a historic context on the northern region of Bucks County.

Cultural Resources Investigation for Southern Reliability Link Project, New Jersey Natural Gas, Burlington, Monmouth, and Ocean Counties, NJ

Date: 2014–2015. **Role:** Historian/ Historic Resources Surveyor. Participated in an ongoing reconnaissance-level historic architectural survey in central New Jersey for New Jersey Natural Gas. Collected cultural resources data on known archaeological and historic architectural resources within the project area at the New Jersey Historic Preservation Office and New Jersey State Museum. Authored property histories for numerous properties within the project area.

Linden Generation Station Demolition of Retired Generating Facilities, PSEG Fossil, Linden, NJ

Date: 2015. **Role:** Historical Researcher. Collected cultural resources data on known archaeological resources located within and near the project area at the New Jersey State Museum.

Phase I Archaeological Investigation, Cedar Substation Expansion Project, Atlantic City Electric, Ocean County, NJ

Date: 2014. **Role:** Historical Researcher. Collected cultural resources data on known archaeological and historic architectural resources within the project area at the New Jersey Historic Preservation Office and New Jersey State Museum for a Phase IA archaeological investigation.

Archaeological Study & Reconnaissance-Level Historic Architectural Survey for Existing Transmission Line Rebuild and Upgrade Lewis-Moss Mill, Atlantic City Electric, Atlantic County, NJ

Date: 2014. **Role:** Historian. Researched and co-authored historic context for the coastal region of Atlantic County, New Jersey.

Cultural Resources Investigations for Leidy Southeast Expansion, Transcontinental Gas Pipe Line Company, Mercer and Somerset Counties, NJ

Date: 2014. **Role:** Historical Researcher. Collected cultural resources data in Phase I Cultural Resources investigations. Data was collected and chains of title were established for historic architectural resources within the project area at the New Jersey State Archives and Mercer County Courthouse.

Publications + Conferences

Upcoming. Society for Historical Archaeology (SHA), "Bottles to Bankruptcy: The Failure of Eagle Glass Works, 1845–1849," (With Thomas J. Kutys). St. Charles, MO, January 2019.

Upcoming. (With Thomas J. Kutys). "Bottles to Bankruptcy: Claridge & Rudolph's Enigmatic Eagle Glass Works." *River Chronicles* 3 (2018): 26–31.

Upcoming. (With George Cress, Thomas J. Kutys, Rebecca L. White, and Meta F. Janowitz). "Domestic Queensware in Kensington-Fishtown: Excavating Philadelphia's Waterfront Neighborhoods." *Northeast Historical Archaeology* 46 (2018).

(With Thomas J. Kutys). "An Unbrotherly Seal: A Family Divide Preserved in Glass." *River Chronicles* 2 (2017): 50–51.

Pennsylvania Statewide Conference on Heritage, "Personalizing History: Connecting People Across Time with Technology." Carlisle, PA, June 2017.

Eastern States Archaeological Federation (ESAF), "Portraits of Life in the River Wards: Histories of Fishtown and Port Richmond," Langhorne, PA, November 2016.

(With Thomas J. Kutys). "'Good for a Drink or Segar': A Story of One Family, Two Saloons, and a Prizefighter." *River Chronicles* 1 (2016): 30–38.

Society for Historical Archaeology (SHA), "Life in the River Wards: The History of Kensington and Port Richmond," Washington, DC, January 2016.

Council for Northeast Historical Archaeology (CNEHA), "'Where Filthy Streets Abound': The History of the Port Richmond Site," Long Branch, NJ, November 2014.

Elisabeth LaVigne RPA

Senior Geoarchaeologist and GIS Supervisor

Education

M.A in Geoarchaeology, Boston University, 2009
B.A. in Archaeology, Wheaton College, 2004

Years of experience

8 years in CRM

Years with AECOM

2

Training

HAZWOPER 40-Hour Certification, 2011, updated
10-Hour Construction Industry Training, 2015
8-Hour OSHA Training for Supervisors, 2001
NPS American Battlefield Protection Program workshop, 2016
Section 106 Review Process workshop, 2011

Professional memberships

Archaeological Society of New Jersey, Council for Northeast Historical Archaeology, Eastern States Archaeological Federation
Geological Society of America, Register of Professional Archaeologists

Professional history

Elisabeth LaVigne has been working in cultural resources management in North American archaeology for the past eight years, primarily in New England and the Mid-Atlantic. Prior to that, her experience ranged outside of the U.S., working in Italy, Israel, and Belize. She specializes in archaeological applications of micro- and macro-geomorphology, geophysical remote sensing technology, and geospatial technology. Ms. LaVigne joined AECOM in 2016 and has been managing the Geoarchaeological and Geospatial team, broadening the team's technological capabilities, and supporting archaeological surveys with supplemental geophysical and geomorphological investigations. Her geospatial work has included the collection and processing of sub-meter accurate GPS field data, the construction of project specific data collection applications, the creation and population of GIS cultural resources geodatabases for Federal and State agencies, modeling viewsheds and archaeological sensitivity, and other spatial analysis. Everyday GIS tasks include supporting field staff with pre-plotted testing areas and locations based on archaeological sensitivity, georeferencing historic maps and aeriels, field data analysis, and report figure production. As the Geospatial team manager, Ms. LaVigne is also responsible for deliverable quality and accuracy. She has served on projects for DOT's, the National Park Service, the United States Army Corps of Engineers, the PA Army National Guard, large utility companies, and various other federal, state, county, municipal, and private parties. She is a Registered Professional Archaeologist and meets the Secretary of the Interior's Professional Qualifications Standards for Archaeologists.

Selected project experience

Park Avenue Relocation Project, Delaware Department of Transportation, Sussex County, DE

Date: 2017-present. **Role:** Cultural Resource Geospatial Lead. Set up cloud-based data collection application for field documentation of reconnaissance and intensive-level historic architecture survey. Delaware CRS forms were set up to automatically import data for efficiency and expediency.

Sharswood/Blumberg Revitalization Project, Philadelphia Housing Authority, Philadelphia, PA

Date: 2017-present **Role:** Cultural Resource Geospatial Lead. Responsibilities have included oversight of the data collection application for use on tablets in the field as well as the geospatial deliverables for the Philadelphia Housing Authority. Through the use of a customized data collection application we were able to cut the field time schedule in half. The resulting database was utilized to auto-generate compliance forms, saving time during the reporting phase of the project.

Transource, Siting Study: Independence Energy Connection, PA and MD

Date: 2017 **Role:** Cultural Resource Geospatial Lead. Tasks included gathering locational and attribute data concerning cultural resources within a 930 square mile area from two states for two proposed transmission lines, compiling them into a GIS layers for planning purposes, and assessing Alternatives for potential impact to resources. The client has been able to choose a route which will pre-emptively avoid impact to previously identified cultural resources utilizing this planning tool.

Phase I, II, and III Archaeological Investigations of the I-95/Girard Ave. Improvements Project, PennDOT, Philadelphia, PA

Date: 2016-present **Role:** Cultural Resource Geospatial Lead and Senior Geoarchaeologist. AECOM is conducting a long-term, multi-phase archaeological survey along three miles of I-95. As part of the overall Phase I, II, and III investigations, data management tasks have included geospatial data collection and processing, developing a field archive, and collaborating with other teams to develop a geospatial database incorporating historic research and lab data. This archaeological project has yielded a wealth of information about 17th-20th century inhabitants of Philadelphia.

Naval Weapons Station Earle Lippincott Hill Phase I Archaeological Survey, Naval Facilities Engineering Command, Monmouth County, NJ

Date: 2016-2017 **Role:** Cultural Resource Geospatial Lead and Senior Geoarchaeologist. All Phase I testing was pre-plotted within GIS prior to survey and then laid out utilizing sub-meter GPS units in order to verify accuracy of less than a meter. The results of all testing and site identification were compiled into an SDSFIE compliant cultural resource geodatabase. As part of this Phase I project we conducted a geomorphological survey in order to inform the overall survey and determine that there were no buried surfaces covered by eolian deposits.

Saratoga Springs Housing Site and MWR Area, Naval Facilities Engineering Command, Saratoga County, NY

Date: 2016-2017 **Role:** Cultural Resource Geospatial Lead. All Phase I testing was pre-plotted within GIS prior to survey and then laid out utilizing sub-meter GPS units in order to verify accuracy of less than a meter. The results of all testing and site identification were compiled into an SDSFIE compliant cultural resource geodatabase.

Disaster Planning for Historic Properties, Pennsylvania Historical & Museum Commission, Bedford, Monroe, and Cameron Counties, PA

Date: 2016-2017. **Role:** Cultural Resource Geospatial Specialist. Field survey results for resources located within flood prone areas of these counties were documented using a cloud-based mobile data collection platform. Responsibilities included packaging cultural resource data for inclusion in GIS deliverables, PA SHPO forms, and the PA SHPO database.

2014-2018 Integrated Cultural Resources Management Plan (ICRMP) and Geodatabase Development for Installations of the Pennsylvania Army National Guard, PA

Date: 2014 **Role:** Cultural Resource Geospatial Specialist. Responsibilities for this project included creating and populating a SDSFIE compliant cultural resource geodatabase for the Pennsylvania Army National Guard (PAANG). This geospatial database contained data for each PAANG installation along with the related above and below ground cultural resources. Additionally, the ICRMP was updated for the 2014-2018 report which is required every five years.

NHPA Section 110 Compliance, Cultural Resources Investigations and GIS Database Development (American Recovery & Reinvestment Act 2009), U.S. Army Corps of Engineers, 17 USACE Districts

Date: 2010-2011 **Role:** GIS Specialist. As part of the team that surveyed 17 Districts for the USACE, responsibilities included populating SDSFIE compliant cultural resource geodatabases containing thousands of historic resources for both the USACE and the Louisiana SHPO office. Additional responsibilities included quality assurance and writing metadata in conjunction with deliverables.

Publications + Conferences

Annual Society for Historic Archaeology Conference. "The Brandywine Creek has two branches which are very good for crossing: The Search for Trimble's Ford," with William Chadwick. Washington D.C., 2016.

Annual Society for Historic Archaeology Conference. "Regional Synthesis and Best Practices for the Application of Geophysics to Archaeological Projects in the Middle Atlantic Regions," with William Chadwick. Washington D.C., 2016.

Council for Northeast Historical Archaeology 375th New Sweden Anniversary Conference. "The Impermanent Fort Christina," with Craig Lukezic and William Chadwick. Newark, Delaware 2013.

Geological Society of America Annual Meeting. "Geological Foundations of Ancient Seaport Ashkelon, Israel," with M. Moshier, D. Master, J. Lepori, and D. Wheatly. Minneapolis, MN, 2011.

Mary Lennon

GIS Specialist II

Education

MSc in Geographic Data Science, University of Liverpool, 2017
B.A. in Art History & Anthropology, Temple University, 2012

Years of experience

6.5 years in CRM

Years with AECOM

6.5

Training

Consultant Research Training at the NJ Historic Preservation Office

Consultant Research Training at the NY Historic Preservation Office

CRM Institute: Section 106/ NEPA /NAGPRA/ Antiquities Act Workshops, 2011

Professional memberships

Society for American Archaeology, Philadelphia Archaeological Forum, GeoPhilly, Data Philly, R-Ladies Philadelphia

Professional history

Ms. Lennon joined AECOM, formerly URS, in 2012 and has nearly 7 years of experience in Cultural Resource Management (CRM). She's held positions spanning from archaeological field technician to archival researcher, giving her in depth knowledge of important touch points in CRM projects. She has four years of experience in her current role where she manages geo-spatial data for large projects. Her primary duties include engineering data storage solutions and quality assurance procedures for large data intensive projects as well as providing descriptive and predictive analysis on final data sets. She additionally conducts spatial analysis to determine archaeological site suitability, provides Total Station and GPS support, produces map and atlases for field use and reporting, manages cloud storage solutions, and develops web applications. She uses both open source and propriety softwares and is proficient several programming languages; these include but are not limited to ArcGIS, QGIS, SQL, R, and Python. She recently obtained a Master's degree (MSc) in Geographic Data Science, graduated December 2017, and spent 9 months working in industry as a Data Scientist. During that time she developed skills in advanced spatial and non-spatial analytical techniques including machine learning algorithms that she is applying to a variety of projects at AECOM.

Selected project experience

Federal & Aviation Exploratory Data Analysis Task

Date: *Pending*. **Role:** Data Scientist & GIS Specialist. Extending an existing web-based analytics platform with analysis and machine learning techniques (ML) for better understanding of historical safety data. Duties include: cataloging and assessing the quality of existing spatial and non-spatial data sources, analyzing the contributions of the data to understanding current safety risks, visualizing and exploring existing data to uncover insights and find conditional relationships, and building predictive models to identify safety hazards using standard statistical and advanced machine learning techniques.

Archaeological Investigations of the I-95/Girard Ave. Improvements Project, Philadelphia, PA

Date: 2018-*ongoing*. **Role:** Data Engineer. Developing and maintaining an overarching architecture that stores, processes, and analyzes field, lab, and historic research data compiled during the I-95/Girard Ave. Improvement project. Duties include: liaising with departments to assess needs, creating and implementing developments through short and long term wins, creating a relational database structure linking both spatial and non-spatial data, discovering opportunities for new systems and environments, recommending ways to improve data reliability and quality, testing and maintaining existing architecture.

PAModel Analysis for ASR, Archaeological Predictive Model Assessment

Date: 2018-*ongoing*. **Role:** Technical Reviewer. Reviewed and commented upon existing data, processes, and write-up as a technical expert for the PAModel and ASR comparative analysis to assure quality.

SEPTA, Cultural Resources GIS Pilot Project, PA

Date: 2015-*ongoing*. **Role:** GIS Lead & Data Manager. Designed a GIS database and associated web application, of historic resources, for use in pro-active development planning. Database includes previously identified resources from both state and local repositories, related tables, attachments, and hyperlinks to associated documents, photos, and websites.

Shell Falcon Ethane Pipeline, Beaver, PA

Date: 2016. **Role:** Data Manager & GIS Specialist. Tracked and locally archived changes to the pipeline; designed shovel test strategies; quality checked and archived incoming field data; created and applied prehistoric and historic sensitivity models; mapped newly identified archaeological resources; calculated and compiled statistics for pertinent federal reports.

PHMC Disaster Planning Initiative, PA

Date: 2016. **Role:** Data Manager & GIS Specialist. Assisted in developing a partnership between FEMA, the US Army Corps of Engineers, PHMC, and AECOM to create flood depth grids for select Pennsylvania counties as well as map and assess impact of potential flooding events on historic resources. Duties included: Building a flood depth grid following FEMA regulations and guidelines. Co-managing a web application for data collection with an interactive and dynamic client facing portal. Preparing and quality checked incoming field data. Creating field maps as well as maps and atlases for final reports.

UGI Corporation, PennEast Pipeline, Phase I Archaeological Survey, NJ and PA

Date: 2014-2016. **Role:** Data Manager & GIS Specialist. Tracked and locally archived changes to the pipeline; designed shovel test strategies; quality checked and archived incoming field data; created and applied prehistoric and historic sensitivity models; mapped newly identified archaeological resources; calculated and compiled statistics for RR4, FERC, and other technical reports.

New Jersey Natural Gas, Phase I Cultural Resources Investigation, Southern Reliability Link, Burlington, Phase I Archaeological Survey, Monmouth, and Ocean Counties, NJ

Date: 2014-2016. **Role:** GIS Specialist. Geo-referenced historic maps and created Trimble GPS data for field reconnaissance. Ms. Lennon also created field and final report maps for both the Pineland Commission and NJ DEP reports. Additionally, created the requisite report graphics for the stand-alone Architectural Survey reports.

UGI Corporation, Sunbury Pipeline Project, Phase I Archaeological Survey, PA

Date: 2014-2015. **Role:** GIS Technician. Project consists of archaeological and historic architectural studies as part of Section 106 and the FERC review process for a 33-mile pipeline. Ms. Lennon acted as one of two GIS technicians who mapped and calculated survey coverage for both above-ground and below ground resources for RR4, FERC, and technical reports.

Chemours Company FC, LCC, Washington Works Island Cable Project, Phase I/II Archaeological Survey, WV

Date: 2015. **Role:** GIS Technician. Mapped field results, created archaeological site boundaries, and functioned as the project's Geo-Spatial liaison with the West Virginia Historic Preservation Office. Ms. Lennon also generated maps for both the final Phase I & II testing reports.

Shell Chemical Appalachia and Horsehead Corporation, Phase I/II Archaeological Investigations for Proposed Petrochemicals Complex, Beaver County, PA

Date: 2015. **Role:** GIS Technician, Field Technician, & Laboratory Technician. Generated on-going progress maps, field maps, and final reporting materials as well as Trimble GPS data for field use. Ms. Lennon also worked as an archaeological field technician for a month doing both Phase I & II excavations as well as cataloged the artifacts for site 36BV0384.

CONSOL Energy Inc., Phase I Archaeological Investigations

Date: 2015. **Role:** GIS Technician. Conducted raster spatial analysis for site suitability for multiple projects as well as designed the field shovel test models, GPS data for Trimble in the field, imported field GPS data upon project completion, and created final report graphics.

PPL, P3 Program, Phase IA Archaeological Investigation, PA

Date: 2015. **Role:** GIS Technician. Researched and mapped historic resources along multiple PPL lines as a pro-active measure to assist in project planning.

Annapolis Quarry, Phase I Archaeological Investigations, MO

Date: 2014. **Role:** GIS Technician. Conducted raster spatial analysis for site suitability.

Lake Lenape Dam, Phase I Archaeological Investigations, New NJ

Date: 2014. **Role:** GIS Technician & Archival Researcher. Assisted the Principal Investigator in conducting archival research, geo-referencing historic maps and aerials, as well as final report mapping.

Archaeological Investigations of the 195/Girard Ave. Improvements Project, PA

Date: 2014. **Role:** Laboratory Technician & Field Technician. Worked in the lab and field for both Phase II/III excavations. In the field, Ms. Lennon excavated and mapped features, trenches, test units, and STPs. In the lab she processed and cataloged over 50,000 historic and prehistoric artifacts. She has assisted in multiple public outreach events where she educated community groups in the methodological and procedural aspects of archaeology as well as the history of the artifacts.

Meagan Ratini, MA, RPA

GIS Specialist/Archaeologist

Education

MA, Historical Archaeology, University of Massachusetts Boston
BA, Anthropology/English, Rutgers University
Certificate, Historic Preservation, Bucks County Community College

Years of experience

6 (archaeology)
3 (other heritage fields)

Years with AECOM

2

Training and Certifications

Registered Professional Archaeologist, Reg. No. 32614225
Meets Secretary of the Interior's Professional Qualifications Standards for Archaeologists (36 CFR Part 61, Appendix A)
OSHA 10-Hour Outreach Training for the Construction Industry
AECOM 2-Hour Field Safety
Conservation Center for Art & Historic Artifacts (CCAHA) workshops: "Digitization for Small Institutions," "Environmental Management: Stewardship and Sustainability for Cultural Collections"

Professional Affiliations

Register of Professional Archaeologists
Society for Historical Archaeology
Council for Northeastern Historical Archaeology

Professional history

Meagan Ratini has recently joined AECOM and brings over six years' experience in archaeological investigations. She has participated in excavations, geophysical surveys, laboratory analyses, and collections projects across the Mid-Atlantic region and New England, and has worked in cultural resources management, academia, and for institutions both public and private. Ms. Ratini specializes in combining traditional archaeological methodology, archaeological geophysics, and geographic information systems (GIS) to create fuller understandings of the past. Through both GIS and collections work, Ms. Ratini has experience in managing and interpreting complex datasets. She has also supervised traditional archaeological field and lab work as well as remote sensing surveys and has authored and co-authored technical reports and conference papers. Currently, her primary duties include producing, managing, and analyzing geospatial data for above and below-ground cultural resource investigations as well as conducting geophysical surveys. Outside of archaeology, Ms. Ratini's professional experience within museums and other heritage organizations lends a nuanced understanding of concerns related to public interpretation and the preservation of cultural heritage.

Selected project experience

Delaware Division of Historical and Cultural Affairs Collections Inventory, Dover, DE

Date: 2017-2018 **Role:** Data Manager. Merged existing collections databases, upgraded collections data into PastPerfect collections management software, and outlined inventory procedures for over 90,000 historic objects and 7000 boxes of archaeological material, containing over 4.5 million artifacts. Responsible for creating and maintaining mobile apps to collect inventory data for incorporation into PastPerfect databases in order to aid in the progress of the team conducting the inventory on-site.

Historic Architectural Survey and Determination of Eligibility, Park Avenue Reroute Project, Sussex County, DE , & U.S. 13 Lochmeath Way to Puncheon Run Project, Kent County, DE

Date: 2017-*ongoing* **Role:** GIS Specialist. Designed, implemented, and maintained mobile apps to record Delaware SHPO-compliant architectural and geospatial information in a database format both during the field effort and as part of the subsequent analysis

PennEast Pipeline, PA and NJ

Date: 2016-*ongoing* **Role:** GIS Specialist. Assist with reporting on above-ground resources with the creation of dynamic maps that track properties, standing buildings, and other survey data.

I-95 Girard Interchange Sector B Archaeological Data Recovery. Philadelphia, PA

Date: 2016-*ongoing* **Role:** GIS Specialist. Large-scale multi-year data recovery project. Construct maps and analyze spatial data from Phases I-III of the site of Gunnars Run and other excavations. Survey on-going excavations using a total station.

Lippincott Hill Phase IB Archaeological Survey, US Navy Weapons Station Earle, NJ

Date: 2016-2017 **Role:** Lead GIS Specialist. Responsible for creating and managing spatial data, including creating protocols for submeter GPS data collection and producing deliverables including a geodatabase created to client's specifications.

Transcontinental Gas Williams New York Bay Expansion, NJ

Date: 2016 **Role:** Lead GIS Specialist. 17-acre Phase I survey. Responsibilities included producing maps and data based on project specifications as well as uploading, downloading, and analyzing field data from a web-based mobile app in real time as areas were surveyed.

PHMC Disaster Planning Initiative, PA

Date: 2016-2017 **Role:** GIS Specialist. Three-county architectural survey to identify properties threatened by flooding. Responsibilities include assembling FEMA flood data, known historic properties, and other survey data to create maps for fieldwork, and analyzing data to create maps for reports.

Shell Falcon Ethane Pipeline, Beaver, Washington, and Allegheny Counties, PA

Date: 2016-2017 **Role:** Lead GIS Specialist, Pennsylvania Cultural Resources. Approximately forty-eight miles of linear survey in Pennsylvania. Tasks included producing and analyzing field maps and GPS data, synthesizing data for report maps for both above- and below-ground resources, and adapting to frequent reroutes.

Archaeological Data Recovery at the site of the Museum of the American Revolution, Third and Chestnut Streets, Philadelphia, PA

Date: 2014-2016 **Role:** Assistant Project Archaeologist. Responsibilities included fieldwork, laboratory analysis, extensive historical research, GIS analysis, and writing chapters of the final report. Work in the field included monitoring an active urban construction site as well as excavating and documenting approximately fifty building and shaft features dating from the early 18th century through the early 20th century, including domestic, mercantile, and industrial sites. As part of laboratory processing, over 80,000 artifacts were processed and analyzed. Report was approved by client and the National Park Service. (Previous employer.)

Cortlandt Crossing Supplemental Phase II Archeological Site Evaluation, Town of Cortlandt, Westchester County, NY

Date: 2015 **Role:** Assistant Project Archaeologist. Phase II Excavation of known prehistoric site locus. Responsible for GIS analysis of site, which was found to have very low density of artifacts. (Previous employer.)

Phase IB Survey for Proposed Exelon Handsome Lake Lateral Pipeline Project, Rockland Township, Venango County, PA

Date: 2015 **Role:** Field Director. Linear Phase IB archaeological survey, including creating a survey strategy in GIS using sensitivity areas defined from landscape features, known sites, and historic maps. Two historic sites were identified, including some remains of the state's early oil industry. Primary author on report approved by client. (Previous employer.)

Melanie Fuechsel GIS Specialist I

Years with AECOM
2 years

Education
University of Mary Washington
B.A., Historic Preservation, 2017
Certificate, Geographic Information Science (GISc), 2017

Northern Virginia Community College
Certificate, Public History/ Historic Preservation, 2016
A.S., General Science, 2015

Language skills
English, German



Professional Memberships:

Vernacular Architecture Forum, Young Friends of the Preservation Alliance

Professional history

During her two years at AECOM Melanie has worked as a GIS Specialist, bringing organization, data management, and GIS online skills to two complex projects. She has been able to integrate both archaeological and architectural data in user friendly online applications from local, state, and federal repositories using ArcGIS Online resulting in a valuable planning tool for clients. Her primary responsibility has been undertaking the data management of 10 years' worth of archaeological field and mapping data for the I-95 Improvements Project in order to assist in the synthesis and analysis of such a valuable data set. Prior to working with AECOM Melanie gained experience in a number of Cultural Resource Management areas including architectural survey, HABS documentation, National Register criteria, museum studies, archaeological field and laboratory work, preservation theory, urban planning and public outreach.

Selected project experience

Historical Documentation and GIS Database, Southeastern Pennsylvania Transportation Authority (SEPTA), Multiple Municipalities, PA

Date: 2017- ongoing **Role:** *GIS Co-Lead* – Responsibilities included updating and enabling interactivity and ease of use via a GIS-web application; yearly collecting and synthesizing previously identified local, state, and federal cultural resources; and adding value through the finding of publically available historic photographs, maps, and news articles in order to link this information to the GIS web application. The database and associated web application are currently in use for pro-active development planning. Resource documentation consulted included local planning documents, Pennsylvania Historical & Museum Commission (PHMC), Philadelphia Register, and the National Register.

Archaeological Investigations for the I-95/Girard Ave. Improvements Project, PennDOT District 6-0, Philadelphia, PA

Date: 2017- ongoing **Role:** *GIS Specialist/Data Manager* – Responsibility as the I-95 Data Manager has included maintaining physical and digital field paperwork produced over 10 years of archaeological excavations, processing and mapping field data in ArcGIS, georeferencing historic maps to aid in feature analysis, updating an internal GIS database application for report authors to view up-to-date excavation information, and overall project progress tracking. Melanie has worked with report authors to outline, organize, and track report writing progress for over 20 eligible archaeological sites.

Quakertown Interchange Phase IB Archaeological Survey – PA Turnpike Commission, Quakertown, Pennsylvania

Date: 2018 **Role:** *Field Technician* – Responsibilities included excavating shovel test transects during a Phase IB survey across multiple agricultural fields. Testing was conducted based on specialized prehistoric and historic probability models.

Collections Inventory, Delaware Division of Historical and Cultural Affairs, Dover, DE

Date: 2017 **Role:** *Intern* - Responsibilities included artifact and cultural object handling, cataloging state collections, and inventory database quality checking within a cloud-based custom-built database for the project.

I-84 Hartford, Connecticut Department of Transportation, Hartford, CT

Date: 2017 **Role:** *Intern* – Responsibilities included GIS analysis of historic maps to supplement property history research as part of Phase IA archaeological report.

Other experience

Freelance Artist

Date: 2010 - ongoing **Role:** *Artist* – Responsibilities included collaborating with clients on educational focused commissions. Published works include coloring/activity pages, technical illustrations, and advertisements. Preferred mediums are traditional, mixed-media, and digital.

Volunteer First Responder

Date: 2011-2016 **Role:** *Convention Staffer* – Responsibilities included first aid and public safety response. **Role:** *Emergency Responder*– Responsibilities included responding to community incidents as a firefighter (ProBoard certified) and EMT-B (Virginia State certified exp. 2019).

Mosby Heritage Area Association

Date: 2015-2016 **Role:** *Intern* – Responsibilities included creating family focused public outreach material for a local historic preservation group. The final activity pages highlighted historic resources and engaged younger audience with a coloring page, simple poetry, and short historic summaries.

Publications + Conferences

Middle Atlantic Archaeological Conference "Bitters and Libations: Bottle Glass and Sherwood Forest Plantation's Union Encampment," Virginia Beach, VA, 2017.

Student Research and Creativity Symposium. "Slave Housing versus Population: A Look into the Disparity Through Data Analysis," Fredericksburg, VA, 2016.

Annual UMW Donor Appreciation Luncheon. "The Evolution of Segregation: The Changing Demographics of Fredericksburg, Virginia," with Andrea Livi Smith and Christine Henry. Fredericksburg, Virginia., ND. *Pending Publication*

Appendix B Project Fact Sheets

Historic Resources Survey for Tappan Zee Bridge

Rockland and Westchester Counties, New York

Client

New York State Department of Transportation

Completed

2011

Services

Historic Resources Survey, NEPA, SEQRA, Effects Analysis, Section 4(f)

Between 2002 and 2011, AECOM was retained by the New York State Department of Transportation (NYSDOT) to prepare environmental screening and impact analysis for the Tappan Zee Bridge/I-287 Corridor. Other client team members included the New York State Thruway Authority (NYSTA), Metro-North Railroad, Federal Highway Administration (FHWA), and the Federal Transit Administration (FTA). The goal of the project was to explore methods to replace the Tappan Zee Bridge, and improve mobility in the I-287 corridor through the potential introduction of highway improvements and mass transit.

In accordance with Section 106 of the National Historic Preservation Act (NHPA), Section 14.09 of the New York State Historic Preservation Act, the National Environmental Policy Act (NEPA), and the New York State Environmental Quality Review Act (SEQRA), AECOM coordinated with the New York State Historic Preservation Office (SHPO) and dozens of municipalities within the 30-mile corridor to determine the nature and extent of protected properties near I-287 and the Tappan Zee Bridge. AECOM also assisted NYSDOT in coordinating with SHPO to determine the Tappan Zee Bridge National Register-eligibility, and conducted a reconnaissance survey to identify areas where large clusters of historic properties existed that may be eligible for listing in the National Register. In addition to collecting cultural resources data, AECOM assisted in rating the impact of over 100 alternatives on cultural resources.

Following selection of five viable project alternatives, AECOM conducted archaeological and historic resources surveys within the two-county, 30-mile project area. AECOM coordinated with NYSDOT to delineate the area of potential effect (APE) for architectural resources, including a complex indirect APE along the Hudson River to take into account potential visual and audible impacts of bridge replacement on waterfront historic resources. A historic context was also developed, which enabled the AECOM cultural resources team to understand prehistoric and historic development within the Lower Hudson River Valley and the proposed APE, and provided baseline information to guide survey field work.

During fieldwork, architectural historians documented over 1,900 historic resources over 50 years old on maps produced using ArcGIS. Each resource was digitally photographed and evaluated according to the National Register Criteria for Historic Significance. Fifty-seven of the over 1,900 resources possessed adequate significance and integrity to be recommended eligible for listing in the National Register, and as a result, AECOM intensively surveyed those resources.

AECOM a multi-volume report that included a detailed project description and characterization of the 30-mile project area, historic context, methodology, and survey results. AECOM also met with federal, state, and local stakeholders to explain the report findings. The final report documented 57 potentially National Register-eligible resources on Historic Resource Inventory Forms and Historic and Natural Districts Inventory Forms. AECOM also prepared a preliminary draft criteria of effects report, which disclosed potential adverse effects, and recommended mitigation measures in accordance with Section 106. In addition, AECOM prepared a Section 4(f) evaluation that indicated that there is no prudent and feasible alternative to replacing the National Register-eligible Tappan Zee Bridge.



Disaster Planning for Historic Properties Initiative Philadelphia, PA

Client
Pennsylvania Historical and
Museum Commission

Services
Historic Survey, Geospatial
Analysis, NR Recommendations

Dates of Service
2015-2017

Overall Value
\$160,000

Awards
Preservation Alliance
for Greater Philadelphia
Preservation Education Award
2017

Key contact details
Jeremy R. Young
Former Project Manager, PHMC
Community and Economic
Development Manager
jyoung@teamlanc.org
717.394.0783

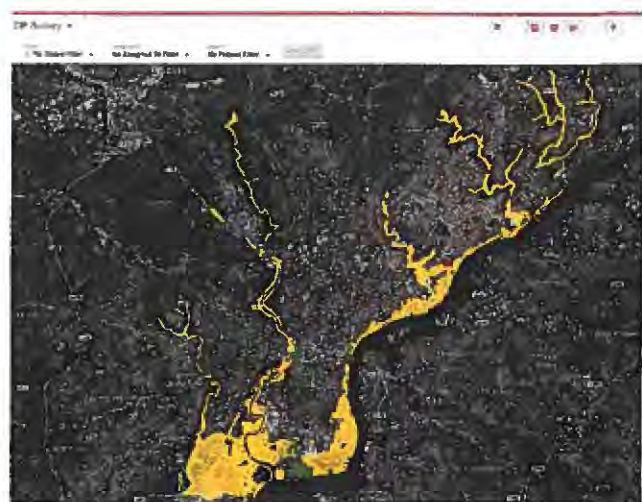
"This represents the first time that a U.S. city will integrate hazard mitigation planning with historic preservation considerations"

As consultants to the PA SHPO, AECOM completed a two-phase survey of historic properties in Philadelphia. Phase One consisted of flood vulnerability assessment data collection for approximately 600 registered historic buildings in flood-prone areas citywide. The project was initiated to assist the City with updating their state and federally-approved hazard mitigation plan to include historic properties. Hand-held tablets were used to capture flood-prone architectural details and character-defining features for each property. Specialized data forms were generated and serve to update existing records as well as present information in a methodical, searchable, and consistent manner.

Phase Two was a non-disaster related, reconnaissance-level historic resource survey within two City of Philadelphia planning districts. Survey supported the Philadelphia City Planning Commission's ongoing comprehensive plan update

by recording information on previously undocumented historic resources and implementing historic preservation goals and objectives. AECOM Architectural Historians developed an approach that prioritized approximately 4,400 resources identified as potentially eligible and/or worthy of further study by key community stakeholders in tandem with evidence-based methods that utilize digital tools in concert with windshield survey techniques to identify groupings of historic resources with high integrity. Particular emphasis will be placed on potentially eligible historic districts, community landmarks, and thematic resources. AECOM surveyed and assessed all resources for NR eligibility or significance as a community landmark, recording them on Pennsylvania Historic Resources Survey Forms.

Both phases are utilizing a geospatial database to plan for and execute this large-scale historic resources study. Relevant shape files and data were imported into a cloud-based mobile data collection platform so that survey teams could reference the GIS maps in the field as well as capture data via LTE/WiFi-enabled Android tablets, allowing a team of surveyors to record an average of 30-40 properties per day in the City's dense rowhouse neighborhoods.



Sharswood-Blumberg Historic Resources Survey

Philadelphia, PA

Client

Philadelphia Housing Authority
(PHA)

Services

Historic Survey, Determinations
of Eligibility, Cultural Resource
Survey Forms, Digital Collection
Design, GIS Mapping

Project Date

2017-2018

Overall Value

\$117,000

Key contact details

Ken Granderson
Capital Design and Development
Philadelphia Housing Authority
215.684.4216

In 2017, the Philadelphia Housing Authority (PHA) contracted AECOM to serve as their on-call Section 106 consultant in order to satisfy the cultural resource requirements of the Sharswood-Blumberg Neighborhood Transformation Plan. AECOM's Historic Preservation Team was specifically tasked with conducting a year-long reconnaissance-level historic architecture survey of all properties in the dense, urban neighborhood, as well as initiating consultation with the Pennsylvania State Historic Preservation Office (PA SHPO), developing Historic Resource Survey Forms for all surveyed resources, and preparing a reconnaissance-level historic architectural report for review by the PA SHPO.

The overarching goal of the project was to gather up-to-date information on historic properties, adequate background and physical information to make recommendations on whether properties over 50 years of age located in close proximity to PHA's revitalization areas are eligible for listing in the National Register of Historic Places (NRHP). In order to efficiently capture data in the field and minimize desktop analysis, AECOM utilized Wi-Fi-connected hand-held tablets in the field to record property specific information using a web-based application called Fulcrum that was custom designed for the project. The application allowed the teams to toggle between GIS maps and aerial images of the project area and a pre-designed form (made up of drop-down menus and free text fields) to record important physical information about the historic properties, including the exact location of the historic buildings and structures on the property. The historic, physical, and spatial data captured during the survey will be packaged into a deliverable specifically suited to PA SHPO's Cultural Resource Geospatial Information System (CRGIS) so that it will be available for future studies.

As of November 2017, over 700 resources in the Sharswood-Blumberg Neighborhood were inventoried by AECOM as part of this initiative. AECOM also identified several potentially eligible resources for the Philadelphia Register of Historic Places to assist the client with the identification of and sensitivity to local preservation priorities.



Rebuild by Design: Meadowlands Flood Protection Project

Bergen County, NJ

Client

New Jersey Department of
Environmental Protection
(NJDEP)

Services

Archival Research, Intensive
and Reconnaissance Level
Cultural Resource Survey,
Determinations of Eligibility,
Determinations of Effect, NEPA
Consultation, GIS Mapping

Project Date

2017-Ongoing

Overall Value

\$1,000,000

Key contact details

Kimberly McEvoy
RBD Environmental Team Leader
Bureau of Flood Resilience
NJDEP
609.292.0307

Rebuild by Design: Meadowlands is an urban water management strategy designed to reduce the risk of floods from coastal storm surges and/or systemic inland flooding from large rainfall events within the Meadowlands District - an area prone to chronic flooding due to the nature of the landscape, elevation above sea level, complexity of tidal influence, and inadequate stormwater management systems. The majority of the Project Area (greater than 90 percent) is located within the 100-year floodplain of the Hackensack River and has been severely impacted by three major hurricanes since 1999. The most recent of these, Hurricane Sandy, significantly impacted the Project Area, highlighting existing deficiencies in the Project Area's resiliency and ability to adequately protect vulnerable populations and critical infrastructure and facilities from flooding during major storm events. The goal of the project is to reduce flood risk and increase the resiliency of the communities and ecosystems in the Project Area utilizing a combination of green and grey infrastructure, flood walls, tide gates, closure gates, and a surge barrier and pump station.

Members of the Historic Preservation Group contributed to an Alternatives Assessment to assess impacts to historic resources for the Draft Environmental Impact Statement (DEIS) and initiated Section 106 consultation with the New Jersey State Historic Preservation Office (NJ SHPO). Staff members conducted a reconnaissance-level field survey in the vicinity of proposed flood risk reduction improvements and developed intensive-level survey forms for resources determined potentially eligible for inclusion in the New Jersey and National Registers of Historic Places. Future work may include an assessment of effects for New Jersey and National Register-listed or eligible resources and coordination with Consulting Parties.



Inventory of Historical and Archaeological Collections

Dover, DE

Client

Division of Historical and Cultural Affairs of the State of Delaware (DHCA)

Services

Collections Management; Collections Inventory and Documentation; Photo Documentation; Database Management

Dates of Service

2017-2018

Overall Value

\$639,000

Key contact details

Suzanne Savery
Deputy Director, DHCA
suzanne.savery@state.de.us
302.736.7400



The Delaware Division of Historical and Cultural Affairs (DHCA) tasked AECOM with conducting a full inventory of the main storage locations for the state historical and archaeological collections. As part of the process, AECOM inventoried more than 90,000 museum objects, over 7,000 boxes of archaeological material containing over 4.5 million artifacts, and an additional 16,000 archaeological artifacts at an individual level. Staff identified, photographed, and conducted basic conditions assessments of individual objects and their housing. For archaeological collections, all boxes were barcoded and all inventories were linked to databases of site and project information to aid in future research and cultural resources management needs. To address this vast amount of complex and interconnected data, AECOM developed mobile applications for field data

collection which were then incorporated into the DHCA's existing collections databases.

In addition to the management of the physical collections, AECOM also addressed some of the digital aspects of curation. This included tracking and organizing information about accessions, archaeological provenience, archival documentation, and other elements of the collections beyond the objects themselves. Existing collections databases were merged into one overarching system which connected disparate aspects of the collections in order to allow the DHCA curators to better track, study, and care for the collections under their supervision. As part of this process, AECOM also developed a data standards manual to guide future cataloging efforts within the DHCA.

Appendix C Additional Documentation



State of New Jersey

DEPARTMENT OF TREASURY
DIVISION OF PROPERTY MANAGEMENT & CONSTRUCTION
P O Box 034
TRENTON NJ 08625-0034

PHILIP D. MURPHY
Governor

ELIZABETH MAHER MUOIO
State Treasurer

SHEILA Y. OLIVER
Lt. Governor

CHRISTOPHER CHIANESE
Director

DATE: August 13, 2018
TO: All Participating Firms
FROM: Richard M. Ferrara, Assistant Deputy Director
Contracts & Procurement Unit
SUBJECT: Addendum "A" dated August 13, 2018
Project P1187-00, Intensive-Level Architectural Survey – Hoboken
Historic District, City of Hoboken, NJ – Hudson County

Enclosed is the above referenced addendum. All competing firms shall acknowledge receipt by returning this form to:

Division of Property Management & Construction
Contracts and Procurement Unit
Attention: Shawn Taylor
P.O. Box 034
Trenton, NJ 08625-0034
Fax #: (609) 777-1970
Email: shawn.taylor@treas.nj.gov

8/20/18

Date Received

AECOM

Firm Name

437 High Street, Burlington, NJ 08016

Address

Emily P. Givens

Signature

Senior Preservation Planner

Title



State of New Jersey

DEPARTMENT OF TREASURY
DIVISION OF PROPERTY MANAGEMENT & CONSTRUCTION
P O BOX 034
TRENTON NJ 08625-0034

PHILIP D. MURPHY
Governor

ELIZABETH MAHER MUOIO
State Treasurer

SHEILA Y. OLIVER
Lt. Governor

CHRISTOPHER CHIANESE
Director

DATE: August 31, 2018

TO: Historic Building Architects, LLC
Gilsanz Murray Steficek, LLP
E2 Project Management, LLC
AECOM Architects & Engineers (NJ), Inc.
Dewberry Engineers, Inc.
NV5, Inc.
Connolly & Hickey Historical Architects
Johnson, Mirmiran & Thompson, Inc.
Netta Architects

FROM: Richard M. Ferrara, Assistant Deputy Director *RF*
Contracts & Procurement Unit

SUBJECT: Addendum "B" dated August 31, 2018
Project P1187-00, Intensive-Level Architectural Survey - Hoboken
Historic District, City of Hoboken, NJ - Hudson County

Enclosed is the above referenced addendum. All competing firms shall acknowledge receipt by returning this form to:

Division of Property Management & Construction
Contracts and Procurement Unit
Attention: Shawn Taylor
P.O. Box 034
Trenton, NJ 08625-0034
Fax #: (609) 777-1970
Email: shawn.taylor@treas.nj.gov

08/31/2018
Date Received

AECOM Architects & Engineers (NJ) Inc.
Firm Name

437 High Street, Burlington, NJ 08016
Address

[Signature]
Signature

Samantha Kuntz, Preservation Planner
Title

Statement of Commitment from AECOM's Chief Executive Officer

It is the policy of AECOM not to discriminate or allow the harassment of employees or applicants on the basis of sex, gender identity, sexual orientation, race, color, religious creed, national origin, physical or mental disability, protected veteran status, or any other characteristic protected by law with regard to any employment practices, including recruitment, advertising, job application procedures, hiring, training, promotion, transfer, compensation, job assignments, benefits, and/or other terms, conditions of employment, provided the individual is qualified, with or without reasonable accommodations, to perform the essential functions of the job. This policy applies to all jobs at the Company. The Company will continue to ensure that individuals are employed, and that employees are treated during employment, without regard to their sex, gender identity, sexual orientation, race, color, religious creed, national origin, physical or mental disability, protected veteran status, or any other characteristic protected by law in all employment practices as follows:

Employment decisions at the Company are based on legitimate job-related criteria. All personnel actions or programs that affect qualified individuals, such as employment, promotion, demotion, transfer, recruitment, advertising, termination, rate of pay or other forms of compensation, and selection for training, are made without discrimination because of any basis protected by law. Employees may choose to voluntarily disclose their sex, race, national origin, disability and protected veteran status at any time by contacting Human Resources. Such information will be maintained in a confidential manner and will not be used against an individual when making any employment decisions. Employees and applicants with disabilities and disabled veterans are encouraged to inform Human Resources if they need a reasonable accommodation to perform a job for which they are otherwise qualified. The Company makes, and will continue to make, reasonable accommodations to the known physical or mental limitations of an otherwise qualified applicant or employee to promote the employment of qualified individuals with disabilities and disabled veterans, unless such accommodations would impose an undue hardship on the operations of the Company's business.

As AECOM's Chairman and Chief Executive Officer, I am fully committed to the principles of equal employment opportunity and affirmative action. I have appointed EEO Officers responsible for supporting the successful implementation of the Company's Affirmative Action Plans (AAPs). Those EEO Officers work with Affirmative Action Coordinators at various locations of the Company, with joint responsibility for implementation of the Company's affirmative action activities. The EEO Officers and Affirmative Action Coordinators have the full support of top management and the staff necessary to fully implement this Program. All managers and supervisors will take an active part in the Company's AAPs to ensure qualified employees and prospective employees are considered and treated in a nondiscriminatory manner with respect to all employment decisions. Furthermore, AECOM will solicit the cooperation and support of all employees for the Company's Equal Employment Opportunity and Affirmative Action Policy.

Our Affirmative Action Plans include an audit and reporting system, which, among other things, uses metrics and other information to measure the effectiveness of our Programs. The Affirmative Action Coordinator is responsible for periodically reviewing progress in the compliance and implementation of the policy of affirmative action. In accordance with public law, the Company's program of affirmative action for qualified individuals with disabilities and the program of affirmative action for protected veterans are available for inspection in the Human Resources Department, Monday through Friday, from 9:00 a.m. to 5:00 p.m. upon request.

In addition, employees and applicants will not be subjected to harassment, intimidation, threats, coercion, or discrimination because they have engaged in, or may have engaged in, filing a complaint, assisting or participating in an investigation, compliance review or hearing, or other activity related to the administration of Section 503 of the Rehabilitation Act of 1973, the Vietnam Era Veterans' Readjustment Assistance Act of 1974, Executive Order 11246, all as amended, and/or any other federal, state, or local law or regulation regarding Equal Employment Opportunity, opposing any act or practice made unlawful, or exercising any other right protected by such laws or regulations. AECOM will not discharge or in any other manner discriminate against employees or applicants because they have inquired about, discussed, or disclosed their own pay or the pay of another employee or applicant. However, employees who have access to the compensation information of other employees or applicants as part of their essential job functions cannot disclose the pay of other employees or applicants to individuals who do not otherwise have access to compensation information, unless the disclosure is (a) in response to a formal complaint or charge, (b) in furtherance of an investigation, proceeding, hearing, or action, including an investigation conducted by the employer, or (c) consistent with the contractor's legal duty to furnish information.



Michael S. Burke
January 2017