



ENGINEERING • PLANNING • ARCHITECTURE • SURVEYING, INC.
445 GODWIN AVE. STE. 9, MIDLAND PARK, NEW JERSEY 07432
P. 201-447-6400 • F. 201-447-1233 • WWW.LANASSOCIATES.COM

SINCE 1965

March 8, 2019

N.J. Department of the Treasury
Division of Property Management and Construction
Contracts & Procurement Unit
33 West State Street, 9th Floor
Trenton, NJ 08608

Attention: Ms. Catherine Douglass

Subject: Request for Proposal
Demolition Consultant
Term Contract TC-004
DPMC Project P1194-00
LAN Ref. #2.80076.0 - #3532

Dear Ms. Douglass,

In accordance with your Request for Proposal, LAN Associates Engineering, Planning, Architecture, Surveying, Inc. (LAN) is pleased to submit this proposal to provide demolition consulting services for projects throughout the state.

It is our understanding that these services will include multiple assignments on an as-needed, rotating basis. The scope of work consists of providing demolition design and construction administration services for the New Jersey Department of Environmental Protection (DEP) Sandy Blue Acres Acquisition Program and other statewide demolition projects, as necessary. The consulting services may be used to develop preliminary surveys, assessments, scopes of work and/or design documents and specifications for the demolition, proper disposal and disposition of buildings and structures. The design documents and specifications will address disconnecting all utilities, the closing of all wells, pumping and filling of all septic systems/cesspools, removal and testing of aboveground and underground storage tanks and removal of hazardous materials from the properties. The Consultant firm will prepare necessary design/bid documents, and provide permit coordination, bidding support, and construction administration services.

LAN is thoroughly familiar with the requirements of this contract, as we have successfully been a Demolition Consultant to the DPMC under a similar term contract for the past five (5) years. LAN has performed nearly over a dozen similar projects under our existing contract. LAN has been working with the DPMC and other State agencies that include the DEP Division of Parks and Forestry, Department of Transportation, Department of Military and Veterans Affairs, Department of Education, Schools Development Authority, and Juvenile Justice Commission for decades, and has performed work at numerous state facility locations. LAN's existing long-term task contracts demonstrate our proven track record of providing superior client services, client satisfaction, responsiveness, and an ability to complete projects on time and within budget.

We appreciate having this opportunity to present our qualifications to you and look forward to continuing to work with you.

Respectfully submitted,

LAN Associates, Engineering, Planning
Architecture, Surveying, Inc.



Steven Ramiza, PE, LEED AP
Vice President
steven.ramiza@lanassociates.com

Table of Contents

01	Organization Chart/Staffing Plan
02	Project Key Personnel List
03	Resumes of Project Key Personnel
04	Project Experience
13	Key Team Member Project Experience Data Sheets
14	Project Approach
17	Summation

List of Attachments

1	Term Contract Rate Schedule by Personnel Level
2	Consultant Affidavit
3	Required Administrative Forms
4	DPMC Prequalifications
5	Certificates

ORGANIZATION CHART/ STAFFING PLAN

Team Qualifications

LAN's team includes nearly one hundred architects, engineers, design professionals, scientists, and other technical staff; and is organized into two major segments: Building and Site.

Our Building segment includes skilled architects, MEP engineers, and construction administrators; each experienced to tackle all project needs within the building envelope. LAN's Site segment includes environmental and regulatory compliance professionals, land use professionals, civil engineers, land surveying, as well as construction administrators. Our Site development team focuses on identifying and creatively resolving development concerns.

Building and site design are essential elements to how we approach every project and ultimately allow our design teams to focus on providing transformative designs that positively affect our clients and their surrounding communities.

Specifically, our team of professionals offers the following credentials to this project:

- Sixteen (16) Professional Engineers (PEs)
- Fourteen (14) Registered Architects (RAs)
- Four (4) Professional Planners (PPs)
- Two (2) Professional Land Surveyors (PLSs)
- Three (3) Certified Municipal Engineers (CMEs)
- Two (2) NJDEP Licensed Site Remediation Professionals (LSRPs)
- Five (5) NJDEP-Certified UST Personnel
- One (1) Certified Industrial Hygienist (CIH)
- One (1) Certified Safety Professional (CSP)
- Four (4) AHERA Building Inspectors
- One (1) AHERA Management Planner
- One (1) AHERA Supervisor/Contractor
- One (1) AHERA Project Designer
- Four (4) Wetlands Professionals
- Twenty-Two (22) LEED Accredited Professionals

As required by this Request for Proposal, LAN is prequalified by DPMC to perform work in the following disciplines:

- Civil Engineering (with a rating of \$25 million)
- Environmental Engineering
- Estimating/Cost Analysis

LAN plans to use Environmental Connection, Inc. of Trenton, New Jersey as a subconsultant to perform hazardous building material evaluations, and to prepare asbestos abatement specifications. As required by this Request for Proposal, Environmental Connection, Inc. is prequalified by DPMC to perform work in the following disciplines:

- Asbestos Design
- Lead Paint Evaluation

LAN also plans to use Richard Grubb and Associates, Inc. as a subconsultant to perform cultural resources screening, as necessary, to identify known historic properties and archaeologically sensitive areas.

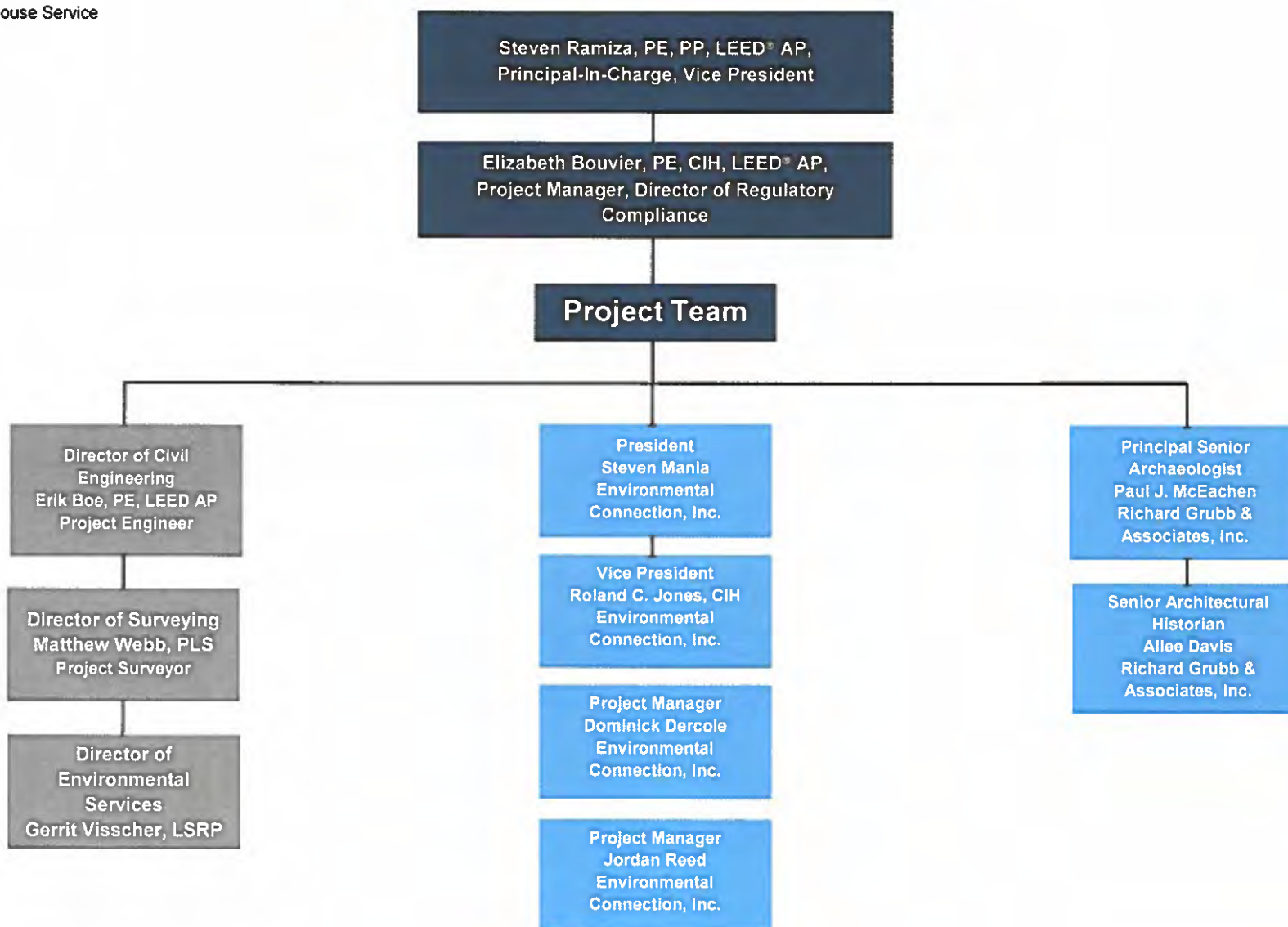
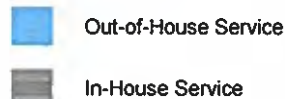
An organization chart showing the professional and technical personnel from LAN and our subconsultants that will be assigned to projects completed under this term contract is provided on the following page. Copies of the DPMC prequalifications for LAN and Environmental Connection, Inc. are included as an attachment to this proposal.



Project Team



ORGANIZATIONAL CHART



PROJECT KEY PERSONNEL LIST

PROJECT KEY PERSONNEL LIST

FIRM NAME	KEY PERSONNEL & TITLE	PERCENTAGE OF TIME ASSIGNED TO PROJECT							
		DESIGN DEVELOPMENT PHASE	FINAL DESIGN PHASE	PERMIT APPLICATION PHASE	BIDDING & AWARD PHASE	CONSTRUCTION		CLOSE OUT PHASE	HOURLY WAGE LEVEL 1-7
LAN Associates, Engineering, Planning, Architecture, Surveying, Inc.	Steven J. Ramiza, PE Vice President	2	2	0	0	2	0	2	7
LAN Associates, Engineering, Planning, Architecture, Surveying, Inc.	Elizabeth Bouvier, PE Project Manager	70	70	40	20	20	20	20	6
LAN Associates, Engineering, Planning, Architecture, Surveying, Inc.	Erik Boe, PE Director of Civil Engineering	20	20	10	10	10	10	10	5
LAN Associates, Engineering, Planning, Architecture, Surveying, Inc.	Matthew Webb, PLS Director of Surveying	20	0	0	0	0	0	5	5
LAN Associates, Engineering, Planning, Architecture, Surveying, Inc.	Gerrit Visscher, LSRP Director of Environmental Services	20	20	20	0	10	10	10	5
Environmental Connection, Inc.	Steven Mania President	5	3	2	2	0	0	0	7
Environmental Connection, Inc.	Roland C. Jones, CIH Vice President	20	20	5	3	0	0	0	6
Environmental Connection, Inc.	Dominick Dercole Project Manager	50	50	20	10	0	0	0	5
Environmental Connection, Inc.	Jordan Reed Project Manager	50	50	20	10	0	0	0	5
Richard Grubb & Associates, Inc.	Paul J. McEachen Principal Senior Archaeologist	10	10	20	0	0	0	0	6
Richard Grubb & Associates, Inc.	Allee Davis Senior Architectural Historian	10	10	20	0	0	0	0	5

INSERT THE WAGE LEVEL FROM 1 TO 7 OF EACH KEY PERSON. **DO NOT** INSERT ANY HOURLY RATE

RESUMES OF PROJECT KEY PERSONNEL

LAN

LAN ASSOCIATES

ENGINEERING PLANNING ARCHITECTURE SURVEYING

LICENSES & CERTIFICATIONS

Licensed Professional Engineer
(NJ, DC, GA, NY, PA, DE, MD, VA, TX)

40 Hour OSHA Hazardous Waste Site Worker

AHERA/Asbestos Building Inspector

Underground Storage Tanks - All Categories
NJDEP, License #177427

LEED® Accredited Professional
License #10311895

NWS SKYWARN® Spotter
License #13-399NYC

ORGANIZATIONS/AFFILIATIONS

ACECNJ, Executive Committee, Director

ACECNJ, Legislative & Policy Committee, Member

American Society of Safety Engineers (ASSE)

ANSI Z136 Standards Committee, Alternate Member

US Green Building Council (USGBC)

Build with Purpose, Board Chair

Lead New Jersey, Class of 2016

PRESENTATIONS/PUBLICATIONS

Indoor Environmental Hazards, NJAA Conference,
May 2018.

Submission Denied! Overcoming Common Property
Development Constraints, NJAC Conference,
May 2018.

Laboratory Safety: An Overview of the
Ever-Changing Hazards, Professional Safety
Magazine, July 2017.

Pitfalls and Opportunities: How Multifamily Owners
and Developers Can Stay Ahead of Environmental
Issues, NJAA Conference, May 2017.

Stay Ahead of the Game: Conquering Regulatory
Challenges for Development, NJAC Conference,
May 2017.

Underground Storage Tanks: Regulations,
Permitting, the Removal Process, and the Cost,
April 2017.

Laboratory Safety: The Unique Challenges,
ASSE Conference, June 2016.

EDUCATION

New Jersey Institute of Technology
Newark, NJ
Master of Science, Engineering Management

Rowan University,
Glassboro, NJ
Bachelor of Science, Physics

Steven Ramiza

VICE PRESIDENT
PE, LEED® AP

EXPERIENCE

As Vice President of the corporation, Mr. Ramiza currently has overall management of the Environmental Services, Regulatory Affairs, and Civil Engineering & Land Use departments, as well as business development and corporate responsibilities.

Mr. Ramiza has twenty years of experience providing consulting services to a variety of public and private clients. His expertise focuses mainly on environmental compliance, due diligence, and planning/feasibility studies. He also provides occupational safety services relative to hazard communication, industrial hygiene, personal protective equipment, emergency response, hearing conservation, fire prevention, electrical safety, machine guarding, process safety, storage tanks, mold, asbestos, lead, & PCB's, and hazardous waste. Mr. Ramiza has been recognized as an expert witness for several litigation cases involving mold, indoor air quality (IAQ), and water infiltration.

His rich experience has allowed for him to present on a variety of environmental and safety topics at national conferences, local and professional organizations, and to commercial lenders and brokers. He has also audited dozens of facilities for both environmental and occupational safety compliance, prepared hundreds of written safety and environmental programs, and provided training to thousands of employees from LAN's industrial client base.

PARTIAL CLIENT LISTING

Industrial:

- Actavis (Amide) Pharmaceuticals
- Alvogen
- AMPAC Fine Chemicals
- Balchem Corporation
- Bayer HealthCare Diabetes Care
- Burrows Paper Corp.
- Chromalloy
- Clearwater Paper
- Nice-Pak Products
- Pratt & Whitney
- Quaker Oats Company
- Schering Plough Corporation
- Siemens Healthcare Diagnostics
- Sodexo
- Tilcon New York
- Unilever

Non-Profits:

- Access: Supports For Living
- Boys & Girls Club of Hawthorne
- Build With Purpose
- Elizabeth Coalition to House the Homeless
- Greater Bergen Community Action
- Occupations/New Dynamics
- New Jersey Community Development Corporation

Lenders:

- Atlantic Stewardship Bank
- Columbia Bank
- Sun National Bank

Charter Schools:

- Academy Charter High
- Barack Obama Green Charter High
- Central Jersey Arts
- Elysian Charter
- Golden Door Charter
- Greater Brunswick Charter
- Hope Academy Charter
- Jersey City Community Charter
- Lady Liberty Charter
- Learning Community Charter
- Marion P. Thomas
- Pride Academy Charter
- Sussex County Community Charter
- Teaneck Community Charter
- Uncommon Charter
- University Heights Charter

Educational K-12:

- Fair Lawn
- Newark
- Paramus
- Paterson
- Ramsey
- West Milford
- West Orange

State/County:

- NJ Schools & Development Authority
- NJ Division of Parks & Forestry
- NJ Division of Property Management & Construction
- NJ Juvenile Justice Commission
- Passaic County Brownfields Commission

LAN

LAN ASSOCIATES

ENGINEERING PLANNING ARCHITECTURE SURVEYING

LICENSES & CERTIFICATIONS

Licensed Professional Engineer
NJ #24GE04808800
NY #087899-1
CT #PEN.0027442

Certified Industrial Hygienist
#9813 CP

OSHA 40-Hour Health and Safety Training for
Hazardous Operations

Vegetation Identification for Wetlands
Delineation, Rutgers University

Methodology for Delineating Wetlands, Rutgers
University

Hydric Soils, Rutgers University

ORGANIZATIONS/AFFILIATIONS

American Industrial Hygiene Association

EDUCATION

Steven Institute of Technology,
Hoboken, NJ
Bachelor and Master of Engineering
Environmental Engineering

Tulane University
New Orleans, LA
Graduate Certificate in Industrial Hygiene

Elizabeth M. Bouvier

DIRECTOR OF REGULATORY COMPLIANCE
PE, CIH, LEED® AP

EXPERIENCE

Ms. Elizabeth Bouvier is an experienced Environmental Engineer and Industrial Hygienist for LAN's Environmental and Facilities Engineering Division. As Director of Regulatory Compliance, Ms. Bouvier's responsibilities include industrial hygiene, regulatory compliance, environmental permitting, monitoring and reporting.

Her experience includes developing and implementing industrial hygiene sampling and monitoring plans for volatile organic compounds (VOC's), chromium, mold, formaldehyde, electromagnetic fields (EMF), noise, carbon monoxide and total and respirable dust. Ms. Bouvier has prepared numerous written safety and environmental programs that are required by the Occupational Safety and Health Administration (OSHA) and the Environmental Protection Agency (EPA). Additionally, Ms. Bouvier has provided training on a variety of environmental, health, and safety topics including hazard communication, chemical hygiene, personal protective equipment, emergency response, electrical safety, and hazardous waste.

Ms. Bouvier prepares air permit applications, air emission calculations, emission statements, annual combustion adjustment reports, stormwater discharge permit applications, and stormwater no exposure certification forms. She has collected stormwater discharge samples, and prepared stormwater discharge monitoring reports. Additionally, Ms. Bouvier prepares Spill Prevention, Control, and Countermeasure (SPCC) Plans for facilities with aboveground oil storage.

Ms. Bouvier has authored Safety Data Sheets (SDS's) for a variety of products, and managed the SDS database for raw materials for several research and development facilities.

Additionally, Ms. Bouvier performs site inspections and environmental assessments for both private and public clients, and prepares Preliminary Assessment, Site Investigation, and Remedial Action Reports for submission to the New Jersey Department of Environmental Protection (NJDEP). Ms. Bouvier also performs Indoor Environmental Health Assessments (IEHA's) for child care and educational facilities for submission to the New Jersey Department of Health (NJDOH).

She also prepares plans and specifications for aboveground and underground storage tank installations and removals, and has prepared plans and specifications for demolition projects. Ms. Bouvier's experience also includes performing environmental feasibility studies, which included environmental site assessments, utility investigations, hazardous building material identification, property acquisition cost estimates, review of local zoning/construction ordinances, and environmental impact statements pursuant to Executive Order 215.

PARTIAL CLIENT LISTING

- Pratt & Whitney
- Unilever
- Nice-Pak Products, Inc.
- Clearwater Paper
- Chromalloy
- State of New Jersey Division of Parks & Forestry
- Columbia Bank, Sun National Bank & Atlantic Stewardship Bank
- NJ Schools Development Authority
- Tilcon New York, Inc.
- Actavis (Amide) Pharmaceuticals
- Alvogen
- Siemens HealthCare Diagnostics
- Over 150 Private Child Care Facilities
- Municipalities, Attorneys, Schools & Private Clients

LAN

LAN ASSOCIATES

ENGINEERING PLANNING ARCHITECTURE SURVEYING

LICENSES & CERTIFICATIONS

Professional Engineer
NJ #24GE04669100
NY #089208-1

LEED® Accredited Professional

ORGANIZATIONS/AFFILIATIONS

Stormwater Management for Engineers,
Cook College

Regulatory Training UST's, Cook College

AutoCAD Civil 3D Training

LEED® AP

EDUCATION

Cornell University,
Ithaca, NY
Bachelor of Science in Civil Engineering

Erik E. Boe

DIRECTOR OF CIVIL ENGINEERING
PE, LEED® AP

EXPERIENCE

Mr. Boe is an experienced Civil Engineer and Associate for LAN's Facilities Engineering and Site Development Division. As Director of Civil Engineering, Mr. Boe's responsibilities includes design development and permitting for a variety of public and private civil engineering projects.

His experience includes site design, site work redevelopment, road resurfacing, road realignments, parking lot design, recreational facilities, stormwater drainage, water main, sanitary sewer extensions, and streetscape projects. Mr. Boe is also experienced in NJDEP permitting, wetlands, stream encroachment, highlands permitting, soil erosion, and sediment control permitting.

Mr. Boe works extensively with The State of New Jersey for various projects within the New Jersey State parkland and Division of Parks & Forestry. He provides site designs, septic systems for new and existing facilities, trail and drainage improvements, parking facilities, as well as, boat ramps and fishing piers.

Mr. Boe has experience with various municipal, state, educational, private, and commercial projects.

PARTIAL CLIENT LISTING

Municipal:

- Corson's Inlet ADA, Dock Installation
- Marianne Place Extension, Road, Site & Drainage Design, Parsippany, NJ

State/Parks & Recreation:

- Aqueduct Park, Boat Ramp and Park Improvements, Lincoln Park, NJ
- Batsto Village Water Supply Study, Wharton State Forest
- Cedar @ Black Creek Reserve, Road, Site, & Drainage Design, Vernon, NJ
- High Point State Park, Beach Facility Septic System
- Liberty State Park, Phase I Grading & SESC Plan, Jersey City, NJ
- Swartwood Lakes State Park, Phase II Drainage Analysis

Educational K-12:

- Irvington BOE, Full Campus Drainage Analysis, Irvington, NY
- Manalapan-Englishtown BOE, Clark Mills Elementary Site Design
- Northern Highlands BOE, East Parking Lot & Softball Field Design
- Ramapo College, Track & Turf Field Drainage Design, Mahwah, NJ
- Ramsey BOE, Ramsey High School Track & Turf Field Design
- Ramsey BOE, Dator School Site, Drainage, & Parking Design

Commercial:

- Christian Health Care Center, Site & Stormwater Design, Wyckoff, NJ
- Holiday Mountain Ski Area, Parking & Drainage Design, Holiday Mountain, NY
- Shiloh Bible Camp, Highlands, Wetlands, FHA, TWA Municipal Permitting for New Gymnasium Facility, West Milford, NJ

LAN

LAN ASSOCIATES

ENGINEERING PLANNING ARCHITECTURE SURVEYING

LICENSES & CERTIFICATIONS

Professional Land Surveyor
NJ #24GS04330200
NY #050851-1

40-Hour OSHA Hazardous Waste Site Worker
Training

ORGANIZATIONS/AFFILIATIONS

New Jersey Society of Professional Surveyors
New York State Association of Professional
Surveyors

EDUCATION

New Jersey Institute of Technology
Newark, NJ
Bachelor of Science, Surveying Engineering
Technology

New Jersey Institute of Technology
Newark, NJ
Master of Science, Civil Engineering
(Expected Spring 2018)

Matthew M. Webb

DIRECTOR OF LAND SURVEYING
PLS

EXPERIENCE

Mr. Matthew Webb is an experienced Land Surveyor and currently serves as the Director of Land Surveying at LAN Associates.

Mr. Webb manages surveying services conducted by LAN. As such, he is responsible for all survey control, boundary closure, metes and bounds descriptions, review of drawings and certifications. Mr. Webb's duties include drafting, deed research, property line analysis, as well as the collection and manipulation of raw field data brought into the office.

Mr. Webb is skilled in the utilization of total station and GPS equipment as well as the procedures necessary for data collection in the field. He is experienced in performing construction stakeouts, topographic surveys, and boundary surveys.

Mr. Webb is proficient in AutoDesk software including AutoCAD Land Development Desktop and Civil 3D. Additionally, Mr. Webb is knowledgeable in Total Station and GPS data processing and manipulation using Leica Geo Office, as well as other related programs.

PARTIAL CLIENT LISTING

- Property line analysis and drafting of various schools in the Ridgewood Public System.
- Property line analysis and drafting of Lot 20.03, Block 55, 48.22 acres, for the County of Monmouth adhering to standards for the New Jersey Farmland Preservation Program, Upper Freehold, NJ
- Drafting and property line analysis of various surveys for the Monmouth County Park System
- Centerline and right of way determination for 30 miles of county roadway, Cumberland County, NJ
- Drafting and property line analysis of various large surveys adhering to ALTA/NSPS standards
- Construction layout for World War II Memorial, Trenton, NJ
- Construction layout for Ewing-Lawrence Sewerage Authority (ELSA), Lawrence, NJ
- Data collection and drafting for the Richfield Trunk Sanitary Sewer, Clifton, NJ

LAN

LAN ASSOCIATES

ENGINEERING PLANNING ARCHITECTURE SURVEYING

LICENSES & CERTIFICATIONS

Licensed Site Remediation Professional
582876

OSHA-40 Hour Health and Safety Training for
Hazardous Operations

OSHA-8 Hour Health and Safety Training
Refresher

Regulatory Training in Underground Storage
Tanks (UST's)

OSHA-8 Hour Supervisor Training
Requirements for 29 CFR 1910.120 and
1926.65

Vegetation Identification for Wetlands
Delineation

Methodology for Delineating Wetlands

Practical Applications in Hydrogeology

Hydric Soils

ORGANIZATIONS/AFFILIATIONS

NJ Licensed Site Remediation Professional
Association

National Association of Environmental
Professionals

NJDEP Certified Underground Storage Tank
Subsurface Evaluator

National Groundwater Association

EDUCATION

Montclair State University,
Montclair, NJ
Master of Arts in Environmental Management

University of Mary Washington,
Fredericksburg, VA
Bachelor of Science in Biology and
Environmental Science

Gerrit Visscher

DIRECTOR OF ENVIRONMENTAL SERVICES
LSRP

EXPERIENCE

Mr. Gerrit Visscher is an experienced Licensed Site Remediation Professional (LSRP) and serves as the Director of Environmental Services at LAN Associates. Mr. Visscher has advanced degrees in Biology, Environmental Science, and Environmental Management. Mr. Visscher has worked with various private clients, local municipalities and state agencies within NJ, NY, PA and VA. His experience includes complete project management from due diligence to Remedial Action Reporting, that include; proposal and bid document preparation, environmental investigations, historical research, due diligence investigations environmental report writing (PA, SI, RI, RAWP, RAR), implementing environmental drilling, soil sampling, groundwater sampling, air sampling, hydrogeologic investigations, pump tests and slug tests, natural attenuation investigations for Classification Exception Areas (CEA), Deed Notice investigations and preparations, monitoring well installations, air quality monitoring, underground storage tanks (UST) removal oversight, investigations and remediation, wetlands investigations, and delineation of subsurface soil and groundwater contamination. He is experienced in environmental field operations including regulatory requirements, sample collection and handling, documentation, equipment operation and decontamination, health and safety plan enforcement and sub-contractor management.

Mr. Visscher manages and oversees report writing and preparation to meet New Jersey Department of Environmental Protection (NJDEP) regulations. Report writing has included numerous Hazardous Waste Screenings, Preliminary Assessments (PA), Site Investigations (SI), Remedial Action Workplans (RAW), Remedial Investigation Reports (RIR), and Remedial Action Reports (RAR) along with development and implementation of soil and groundwater sampling plans and remediation strategies. Mr. Visscher has also prepared and negotiated proposals and bid documents, remediation cost estimates, and subcontractor work orders.

Mr. Visscher has served as a sub-consultant to the New Jersey Schools Development Authority (NJSDA) (formerly NJSCC) – Land Acquisition Group as project officer/ environmental specialist managing contractors performing environmental feasibility activities related to the construction of schools. In this capacity, Gerrit was responsible for requesting and reviewing proposals prepared by contractors, reviewing technical reports for consistency with the NJDEP technical requirements for site remediation prior to submission to the NJDEP, reporting to NJSDA/NJSCC upper management on project status, tracking project progress and discuss and resolve problematic issues through bi-weekly and weekly meetings with contractors and the project management firms.

PARTIAL CLIENT LISTING

- New Jersey Schools Development Authority (NJSDA) former New Jersey Schools Construction Corporation (NJSCC)
- New Jersey Parks and Forestry (NJDEP DP&F)
- New Jersey Department of Transportation (NJDOT)
- New York State Department of Transportation (NYSDOT)
- Pennsylvania Department of Transportation (PENNDOT)
- Jersey City Redevelopment Agency (JCRA)
- Archdiocese of Newark
- City of Newark
- Various Private Clients (Developers, Home Owners, Private Industry)
- Passaic County Brown Fields Commission
- Daycares and Educational Facilities
- Mining and Quarry Industry
- Financial Institutions
- Boards of Education
- Housing Authorities
- Ecclesiastical



ENVIRONMENTAL CONNECTION INC

A Vertical Technologies Corporation

W. STEVEN MANIA
PRESIDENT

AREAS OF EXPERTISE:

Mr. Mania is the founder and President of Vertical Technologies, Inc., (VTI) a leader in environmental management and consulting. Mr. Mania has been involved in all phases of environmental consulting in various capacities since 1987. In addition to his administrative responsibilities, Mr. Mania is Principal-In-Charge of growth, development, budgeting and quality control for VTI and its associated environmental consulting firms, Environmental Connection, Inc., (EC) in New Jersey and Contamination Control Engineering, Inc., (CCE) in New York. In addition to oversight and management of Corporate resources, his responsibilities include the development and implementation of Corporate management systems aimed at sustainable delivery of value to VTI's clients, staff and community with the highest standards of integrity.

Much of Mr. Mania's efforts are related to projects involving complex and innovative design; specification-contract development and direct project management; environmental auditing; investigations and public presentations; and projects that, due to legal or attorney client privilege issues, are sensitive in nature. Mr. Mania's management and development of project specific integrated teams, program analysis and design resulted in VTI receiving the recognition of achievement in a variety of high profile projects. Under Mr. Mania's direction, VTI participated in pioneering professional and environmental movement efforts in areas such as sustainability, green construction and resource protection; moisture mitigation and mold prevention; environmental and integrity risk assessments and development of mitigation strategies; and the development of a comprehensive management and policy development program.

PROJECT EXPERIENCE:

The following is an abridged synopsis representing a sample of Mr. Mania's professional experience:

- In accordance with the Mayor's Directive, Mr. Mania was the overall manager for VTI/CCE's environmental investigation services at Ground Zero during rescue/recovery and clean-up operations, in accordance with the City of New York, Department of Investigation, (DOI) monitorship program. Mr. Mania's involvement revolved around integrity assurance associated with the review and evaluation of remediation protocols, regulatory compliance, and environmental forensics; payment submittal analysis and fraud/corruption investigations relative to Contractors and Consultants working at the site and perimeter structures impacted from the September 11, 2001, attack on the World Trade Center. Mr. Mania also co-authored a series of environmental reports for all environmental related site activities and findings submitted to the DOI.
- Mr. Mania's experience also includes: Environmental Health and Safety as well as general construction litigation investigations and Contract analysis for various City of New York, Offices of the Inspector General offices under the City of New York, Department of Investigation. Mr. Mania also conducted investigations for various legal firms in New Jersey and New York.
- Under the direction of Mr. Mania, Contamination Control Engineering, Inc. (CCE) assisted the City of New York Housing Authority, Office of the Inspector General, (OIG) with its Roofing Contractor investigation. Through Mr. Mania's program development and management, CCE provided the analysis of performance on various New York City Housing Authority roof replacement projects. CCE's analytical services were utilized to forensically determine Contract compliance following the completion of the work, and develop supporting documentation to demonstrate findings and present formal reports to the OIG.
- Mr. Mania was involved in the State of New Jersey's Department of Human Services (DHS) response to the Governor's directive related to the September 11, 2001, WTC attack, regarding Liberty State Park.

120 North Warren Street • Trenton, New Jersey 08608 • tel: 609-392-4200

5 Penn Plaza, Suite 1972 • New York, New York 10001 • tel: 212-952-7300



ENVIRONMENTAL CONNECTION INC

A Vertical Technologies Corporation

- Mr. Mania was integrally involved, from a management perspective, with assisting the State of New Jersey, Department of Human Services, (NJ DHS) with its July of 2002 response to the Haines Building Fire at Trenton Psychiatric Hospital, West Trenton, New Jersey. In this regard Mr. Mania attended all pertinent site meetings and facilitated the management, in conjunction with the Department of Human Services (DHS) and Division of Property Management and Construction (DPMC) personnel, in coordinating the activity of the Contractors, to restore buildings impacted by the fire.
- Mr. Mania was involved as the Principal in charge on CCE's integrity risk monitoring efforts on the World Trade Center Reconstruction Project in conjunction with the NY/NJ Port Authority, Office of the Inspector General. Mr. Mania's environmental responsibilities included systems analysis, supervision of the CCE team's monitoring compliance with all aspects of environmental and Environmental Performance Commitments (EPCs), with particular emphasis on identifying, monitoring and reporting potential integrity risks and program deficiencies.

EDUCATION:

Mercer County Community College-1987

AAS

CERTIFICATIONS AND ASSOCIATIONS:

During his extensive career in the environmental sciences, Mr. Mania has received certifications of proficiency as follows:

- AIHA, Building Sciences, Building Construction & Moisture Prevention
- New Jersey Asbestos Safety Technician
- AHERA Asbestos Project Designer, Asbestos Building Inspector and Management Planner
- Phase Contrast Microscopy NIOSH 582 Certified
- Polarized Light Microscopy (PLM) analysis and X-Ray Fluorescence Analysis
- OSHA 10 Hour Training
- Sub-surface Evaluator Certificate of Completion
- Threat and Risk Assessment
- Health, Safety and Welfare, Sustainable Design

120 North Warren Street • Trenton, New Jersey 08608 • tel: 609-392-4200

5 Penn Plaza, Suite 1972 • New York, New York 10001 • tel: 212-952-7300



ENVIRONMENTAL CONNECTION INC

A Vertical Technologies Corporation

ROLAND C. JONES, CIH, LEED GA

VICE PRESIDENT

AREAS OF EXPERTISE:

Mr. Jones, joined Vertical Technologies, Inc., and its subsidiary corporations, Environmental Connection, Inc., (EC) and Contamination Control Engineering, Inc., (CCE) in 1999, and has been involved in all aspects of environmental consulting performed by the firm. Mr. Jones has gained considerable expertise in the field of Industrial Hygiene through rigorous technical course work and study. During his tenure on the World Trade Center Transit Hub and Memorial projects Mr. Jones has demonstrated proficiency in sustainable building initiatives on assignments related to review and monitoring of the projects' Environmental Performance Commitments, Sustainable Design Guidelines and Leadership in Energy and Environmental Design (LEED) requirements.

Mr. Jones is a Certified Industrial Hygienist (CIH) and is responsible for managing all industrial hygiene operations for the company, including asbestos and lead-based paint management services, indoor air quality, moisture and mold services, health and safety and OSHA monitoring services. Mr. Jones has extensive experience investigating environmental issues and managing environmental remediation projects for both public and private clients.

PROJECT EXPERIENCE:

- As a Senior Project Manager for the firm's Integrity Monitoring team at the World Trade Center Hub, Central Chiller Plant and Memorial Projects, Mr. Jones, in concert with the project team, evaluated the environmental and sustainable design programs/components and as a result identified, investigated and reported on integrity risks posed by inadequate planning, Contractor malfeasance, unidentified hazards, overbilling, fraud and poor oversight. His findings have resulted in program improvements, the reduction of liability and monetary savings for the Client.
- As an environmental consultant for the New York City School Construction Authority, Industrial and Environmental Health Department, Mr. Jones and the project team developed and implemented the Laboratory Quality Assurance (QA) program involving the on-site procedural review of asbestos and chemistry laboratories. Mr. Jones also conducted on site asbestos and chemistry laboratory QA investigations; on site compliance inspections for asbestos abatement and PCB remediation projects; forensic compliance audits of reports for remediation projects; and review of abatement Survey/Design Documents to assist the Authority in the elimination of potential change order issues and fraudulent activities.
- Mr. Jones has been the Senior Project Manager for numerous large scale environmental remediation projects throughout New York, New Jersey, Pennsylvania, Maryland and Connecticut. The projects have typically demanded intricate, fast tracked design and high levels of coordination with multiple parties (i.e., project management firms, architects, prime contractors, school board representatives, etc.). In this regard, Mr. Jones coordinated the projects from inception with original assessment activities through design of the Plans and Specifications to the management of the remedial oversight and the preparation of the final report and project close-out.
- Mr. Jones has provided comprehensive environmental audits for numerous facilities including schools, banks, office buildings and hotels. The audits typically encompassed industrial hygiene concerns such as asbestos containing building materials, lead based paint, lead in potable water, HV/AC evaluations, microbial contamination, radon, PCBs and hazardous materials. As a result of these audits, Mr. Jones was responsible for the design of Plans and Specifications for the remediation of the environmental impacts identified. Additionally, Mr. Jones provided the project management of assigned field personnel and completed all project related tasks.

120 North Warren Street • Trenton, New Jersey 08608 • tel: 609-392-4200

5 Penn Plaza, Suite 1972 • New York, New York 10001 • tel: 212-952-7300



ENVIRONMENTAL CONNECTION INC

A Vertical Technologies Corporation

EDUCATION:

Richard Stockton College of New Jersey
Bachelor of Arts (Biology) 1995-2000

CERTIFICATIONS AND ASSOCIATIONS:

- ABIH, Certified Industrial Hygienist (CIH)
- USEPA AHERA accredited Project Designer
- USEPA AHERA accredited Asbestos Building Inspector
- New Jersey Asbestos Safety Technician (AST)
- New Jersey Lead Inspector/Risk Assessor
- Phase Contrast Microscopy NIOSH 582 Equivalence Trained
- Registered and proficient in the Asbestos Analyst Testing (AAT) Program
- OSHA 10 Hour Training
- OSHA 4 Hour Scaffolding Training

120 North Warren Street • Trenton, New Jersey 08608 • tel: 609-392-4200

5 Penn Plaza, Suite 1972 • New York, New York 10001 • tel: 212-952-7300



ENVIRONMENTAL CONNECTION INC

A Vertical Technologies Corporation

DOMINICK DERCOLE
PROJECT MANAGER

AREAS OF EXPERTISE:

Mr. Dercole is a Project Manager and Industrial Hygienist for Vertical Technologies, Inc., (VTI) and its subsidiaries Environmental Connection, Inc., (EC) and Contamination Control Engineering, Inc., (CCE) whose background encompasses more than 20 years of experience in environmental safety and health.

Mr. Dercole has an extensive background in environmental investigations - including environmental site assessment; microbial remediation project design and implementation; indoor air quality; construction practices; development and implementation of site specific health and safety plans and AHERA management plans; lead project inspections and monitoring; and coordination of both large and small scale Asbestos Hazard Abatement Projects in a variety of jurisdictions. Mr. Dercole has been involved in the environmental field since 1996.

As a Project Manager, Mr. Dercole is directly responsible for overseeing a staff of technicians that monitor on-site activities of remediation/survey projects, while serving as a project point of contact on an administrative level and working in concert with key corporate personnel.

PROJECT EXPERIENCE:

The following is a listing of Mr. Dercole's key project experience:

- Mr. Dercole has provided hazardous material inspections, remediation design, bid administration and remediation oversight for numerous facilities owned by the Township of Woodbridge, New Jersey. Remediation has included asbestos containing materials, lead based paint, Polychlorinated Biphenyls, universal waste, mold and above ground storage tanks.
- Worked as Project Manager overseeing clean-up, performing microbial inspections and preparing remediation protocols for more than 150 buildings, both public and private, post Hurricane Charley, Frances, Ivan and Jean. Mr. Dercole coordinated activities between building owners, insurance adjusters and remediation contractors. He has served as Project Manager overseeing a 3 month Asbestos Abatement project of a 16 story building scheduled for implosion in the city of Coral Gables. Mr. Dercole coordinated re-inspections of the building for missed Asbestos Materials, supervised contractor activities during abatement, oversaw technicians on site performing daily monitoring and coordinated safety monitoring during implosion operations.
- As a Project Manager, Mr. Dercole also worked on projects at various hospital locations throughout South Florida. He performed Asbestos inspections, lead based paint assessments and water intrusion/microbial inspections. Facilities included Jackson Memorial Hospital, Sylvester Comprehensive Cancer Center, Miami VA Hospital, Mercy Hospital, Baptist Hospital, Doctors Hospital and Homestead Hospital. Mr. Dercole interacted with all levels of hospital staff including administrators, medical personnel and facilities personnel to ensure all activities were carried out in a safe manner and affected hospital operations as little as possible.
- Worked as a site safety monitor for the Army Corps of Engineers at the Fresh Kills Landfill after the September 11 World Trade Center disaster. Duties included conducting daily site safety audits and Perform Activity Hazard

120 North Warren Street • Trenton, New Jersey 08608 • tel: 609-392-4200

5 Penn Plaza, Suite 1972 • New York, New York 10001 • tel: 212-952-7300



ENVIRONMENTAL CONNECTION INC

A Vertical Technologies Corporation

Analysis of the following: Hand Sorters, Grappler/Track hoe Operators, Front-end Loader Operators, Dozer Operators, Truck Operators, Mechanical Separators/Sorters, Torch Cutters, and Mechanical Cutters. Provide Respiratory Fit Testing, Site Safety Orientations and Personal Protective Equipment use compliance monitoring for the following agencies and contractors: National Guard, FEMA, NYPD, FDNY, FBI, CIA, FAA, EPA, ATF, NTSB, LAPD, OSHA, NY State Department of Health, U.S. Customs, Coast Guard, Army Corps of Engineers, Secret Service, Salvation Army, Red Cross, NY State Department of Occupational Safety and Health, NY Department of Sanitation, NY Port Authority, NY Department of Environmental Conservation, Winston Salem PD, Boston PD, various Clergy Organizations, POPPA, NY and NJ Department of Corrections, Department of Transportation, NY City Morgue, California Crime Lab, and California Department of Justice-Bureau of Forensic Services. Contractors included Phillips and Jordan, Yannuzzi, Mazzocchi, Garner, Taylor, Adeco, Big East, Hugo Trucking, and IT Group.

EDUCATION:

B.S. Degree Major in Biology, Minor in Chemistry
The University of Miami 1993-1998

CERTIFICATIONS AND ASSOCIATIONS:

Mr. Dercole has received certifications of completion/licensure as follows:

- National Institute for Occupational Safety and Health (NIOSH) 582 Sampling and Analysis
- USEPA Accreditation as an AHERA Asbestos Abatement Supervisor, (Florida)
- USEPA AHERA accredited Project Designer and Asbestos Building Inspector
- New Jersey Asbestos Safety Technician (AST)
- New Jersey Lead Inspector/Risk Assessor
- USEPA Lead Inspector

120 North Warren Street • Trenton, New Jersey 08608 • tel: 609-392-4200

5 Penn Plaza, Suite 1972 • New York, New York 10001 • tel: 212-952-7300



ENVIRONMENTAL CONNECTION INC

A Vertical Technologies Corporation

JORDAN J. REED

PROJECT MANAGER

AREAS OF EXPERTISE:

Mr. Reed is a Project Manager at Environmental Connection, Inc., (EC). With a strong background in Biology and Biochemistry, Mr. Reed is a knowledgeable client liaison, with direct responsibilities for overall project coordination and management on matters involving microbial and biological agents geared toward indoor air quality studies, Polychlorinated Biphenyls, lead and asbestos. Mr. Reed possesses a broad range of experience in a variety of environmental consulting areas, including environmental assessments, development of technical specifications and Auto CAD generated plans, preparation of construction cost estimates and bid administration, and contract management, from project inception to close-out.

EXPERIENCE:

Mr. Reed has engaged in dozens of environmental health and safety related projects addressing a variety of contaminants, including Indoor Air Quality and microbial investigations, polychlorinated biphenyls, lead based paint, asbestos, Phase I Environmental Site Assessments, etc. In this capacity, Mr. Reed completed a significant amount of assignments for prominent clients including higher education, K-12 schools, medical facilities, financial institutions, top retail, military vessels, law enforcement and judicial facilities, and many others.

EDUCATION:

Bachelor of Science, Rutgers University

CERTIFICATIONS AND AFFILIATIONS:

Mr. Reed has received certifications of proficiency as follows:

- Asbestos Building Inspector, Pennsylvania and New Jersey
- Asbestos Investigator, City of Philadelphia
- Asbestos Project Investigator, City of Philadelphia
- New Jersey Asbestos Safety Technician
- New Jersey Lead Inspector and Risk Assessor

120 North Warren Street • Trenton, New Jersey 08608 • tel: 609-392-4200

5 Penn Plaza, Suite 1972 • New York, New York 10001 • tel: 212-952-7300



CULTURAL
RESOURCE
CONSULTANTS

PAUL J. McEACHEN
PRINCIPAL SENIOR ARCHAEOLOGIST (36 CFR 61)

YEARS OF EXPERIENCE:

With this firm:
1998-Present
With other firms: 5

EDUCATION:

MA 1996
Memorial University
Anthropology

BA 1993

University of Windsor
Anthropology and
Classics

PROFESSIONAL

TRAINING:

Section 106 Workshop,
Albany, NY,
November 2008

Section 106: Principles
and Practice,
Philadelphia, PA,
July 2014

Advanced National
Register Workshop,
Iwing, NJ, June 2012

PROFESSIONAL

REGISTRATION:

Register of Professional
Archaeologists

PROFESSIONAL

SOCIETIES:

Archaeological Society of
New Jersey

Society for American
Archaeology

Eastern States
Archaeological
Federation

Professional Experience Summary:

Paul J. McEachen, Director of Archaeological Services, has served as a Principal Investigator on all phases of archaeological investigations, and specializes in prehistoric archaeology. Mr. McEachen has prepared and directed cultural resources surveys in accordance with Section 106 of the National Historic Preservation Act, NEPA, and various municipal and state cultural resource regulations. He exceeds the qualifications set forth in the Secretary of Interior's Standards for Archaeologists [36 CFR 61].

Representative Project Experience:

NJDOT, Folsom Maintenance Yard, Borough of Folsom, Atlantic County, NJ (Sponsor: State of New Jersey, Division of Property Management and Construction [NJDPMC]) Provided oversight for the Phase IA historical and archaeological survey for NJDOT's proposed Folsom Maintenance Yard. The purpose of the survey was to determine if documented archaeological resources existed within Area of Potential Effects (APE), to assess the potential for the APE to contain undocumented prehistoric and historic archaeological sites. Background research and a pedestrian survey determined that the APE had a low sensitivity for prehistoric and historic archaeological resources due to previous disturbance from prior mining activities and the subsequent use of the property as a maintenance yard. No additional archaeological survey was recommended.

NJDOT Winter Yard, Old Bridge Township, Middlesex County, NJ (Sponsor: State of New Jersey, Division of Property Management and Construction) Provided oversight to the Principal Investigator, Senior Archaeologist for a Phase IA historical and archaeological survey in connection with the NJDOT's proposed Winter Yard in Old Bridge Township. Background research and a pedestrian survey determined that portions of the APE had a high sensitivity for prehistoric archaeological resources and a low potential to contain historic archaeological resources. A Phase IB archaeological survey was recommended within undisturbed portions of the APE proposed for ground disturbance.

New Sanitary Sewer, Island Beach State Park, Berkeley and Ocean Townships, Ocean County, NJ (Sponsor: NJDPMC) Provided oversight for a Phase IA historical and archaeological survey within the APE for a proposed new sanitary sewer located on Island Beach State Park within a 7.9-mile stretch of Shore Road. The purpose of the survey, which included background research, consultation with interested parties, and an archaeological field reconnaissance, was to assess the potential for significant archaeological resources to be affected by the proposed undertaking.

DeMott Lane Bridge, Delaware & Raritan Canal State Park, Franklin Township, Somerset County, NJ (Sponsor: NJDPMC) Provided oversight for the Phase IA and IB archaeological surveys for the replacement of the DeMott Lane Bridge over the Delaware and Raritan Canal. No significant prehistoric or historic archaeological resources were identified during the archaeological surveys. Since the proposed bridge was located within the New Jersey and National Register-listed Delaware and Raritan Canal Historic District, RGA also prepared of an Application for Project Authorization in accordance with the New Jersey Register of Historic Places Act.



CULTURAL
RESOURCE
CONSULTANTS

ALLEE DAVIS

SENIOR ARCHITECTURAL HISTORIAN (36 CFR 61)

YEARS OF EXPERIENCE:

With this firm:

2013-Present

With other firms: 3

EDUCATION:

MS 2013

University of

Pennsylvania

Historic Preservation

BS 2010

Philadelphia University

Architectural Studies

PROFESSIONAL

TRAINING:

NJ TRANSIT Safety

Training, December 2013

PROFESSIONAL

ORGANIZATIONS:

Board Member of the

DOCOMOMO

Philadelphia Chapter

Member of the

Philadelphia Chapter for

the Society of

Architectural Historians

Member of the National

Trust for Historic

Preservation

Professional Experience Summary:

Allee Davis' experience includes historical research and writing, architectural surveys and analysis, preparation of National Register of Historic Places nominations, and Historic American Buildings Survey (HABS)/Historic American Engineering Record (HAER) recordation. Ms. Davis has experience using computer-aided mapping programs including ArcGIS, ArcView, and AutoCAD. She has prepared and directed cultural resources surveys in accordance with Section 106 of the National Historic Preservation Act, as amended, NEPA, and other municipal and state cultural resource regulations. Ms. Davis' educational and professional experience exceed the qualifications set forth in the Secretary of Interior's Standards for an Architectural Historian [36 CFR 61].

Representative Project Experience:

Marlboro Psychiatric Hospital, Marlboro Township, Monmouth County, NJ (Sponsor: NJ Division of Property Management and Construction) As Architectural Historian assisted with the preparation of the written historical and descriptive data, and photographic components of HABS documentation of the Marlboro Psychiatric Hospital. In one of the largest projects of its type, the interior and exterior of approximately 85 structures were comprehensively photographed in accordance with the standards and guidelines set forth by the National Park Service for HABS recordation. Approximately 1,400 images of the hospital have been taken. Primary and secondary sources were also consulted as part of the research, including original plans prepared by the State of New Jersey's Division of Architecture and Construction, Department of Institutions and Agencies.

Building 11 (Dining Facility), Sea Girt National Guard Training Center, Borough of Sea Girt, Monmouth County, NJ (Sponsor: NJ Department of Military and Veterans Affairs) Prepared an intensive-level architectural survey of mid-twentieth-century Building 11 (Dining Facility) at the Sea Girt National Guard Training Center. As a result of the survey the building was recommended not eligible for listing on the National Register of Historic Places.

Port Authority Administration Building (Building 260), Port Newark/Elizabeth Marine Terminal, City of Newark, Essex County, NJ (Sponsor: Port Authority of New York and New Jersey) Principal Investigator, Senior Architectural Historian for an intensive-level historic architectural survey for the proposed repairs and reconstruction of the Port Authority Administration Building. The intensive-level historic architectural survey identified and surveyed one property more than 50 years of age within the APE-Architecture: Port Authority Administration Building itself constructed in 1967. As a result of the survey, the NJ Historic Preservation Office (NJHPO) determined that the building was potentially eligible for listing on the National Register.

Warren Street Elementary School, 200 Warren Street, City of Newark, Essex County, NJ (Sponsor: City of Newark) Provided oversight for the HABS recordation of the late nineteenth-century Warren Street Elementary School. The work was performed as a mitigation measure prior to the redevelopment of the property. The school was determined eligible for listing on the National Register of Historic Places by the NJHPO as an unusual example of a Queen Anne-style school.

HEADQUARTERS | 259 Prospect Plains Road | Building D | Cranbury, New Jersey 08512 | 609-655-0692 | www.rgaincorporated.com

DBE/WBE/SBE CERTIFIED

PROJECT EXPERIENCE

Who We Are

LAN Associates is one of the most dynamic full-service architectural and engineering firms in the Metropolitan area. LAN has been providing its clients with superior professional services for more than fifty years. With a staff of skilled and experienced professionals, we provide our community with sustainable, practical, and inspirational solutions. Our core philosophy is dedicated to three principles: expertise in design, dedication to our clients, and innovation that serves our clients' needs and transcends future generations.

We employ nearly one hundred architects, engineers, design professionals, field observers, and administrative staff. LAN is responsible for over \$250 million worth of construction per year for educational, healthcare, municipal, housing, industrial, ecclesiastical, and private clients.

LAN prides itself on its diversity while demonstrating a transparent social and environmental approach to acquiring talent. LAN is an employee owned company and a category 6 Small Business Enterprise (SBE) with offices located in Midland Park, NJ; Goshen, NY; and Philadelphia, PA. While LAN is not a Minority/Women Business Enterprise (MWBE), our technical staff exceed 40% MWBE professionals and our annual MWBE growth has been over 50%. Our full-service team is organized into two major segments:

Building

Our team of architects, MEP engineers, and construction administrators implement a wealth of design experience and knowledge to tackle all project needs within the building envelope. With a focus on holistic design and increased energy efficiency, our designs augment productivity and enhance the living, learning, and working environments, while also maximizing the life-cycle cost.



Site

LAN's team of environmental and regulatory compliance and land use professionals, civil engineers, and land surveyors work together to ensure a site can support development in accordance to applicable regulations. By following the proper due diligence, environmental concerns and planning techniques can be identified and resolved before design begins, often reducing the development lifecycle.

Community Service Priority

Giving back to the community has always been a priority for LAN. Our team supports several non-profit organizations. Our experienced professionals use their design background and knowledge to benefit surrounding residents and communities, offer pro-bono design services, and orchestrate multiple blood drives a year.

Whether we are volunteering on construction projects or providing educational programs to our school districts, we believe we can use our talents to make our communities better places to live and inspire the next generation of architects and engineers. Our commitment to our communities was demonstrated by LAN receiving the David F. Bolger Award for Service and Leadership.

Our Commitment to You

LAN is committed to providing our clients with superior professional services. Our senior design professionals use their twenty to forty years' experience early in the conceptual design process to bring value engineering benefits as a proactive rather than reactive benefit to our clients. Using a two layered approach of quality control and quality assurance, our team identifies key decisions throughout the entire design process by implementing milestone reviews and involving our construction litigation experts and skilled construction administrators. Our multi-disciplinary team, adept problem solving capabilities, and passion for design help us exceed client's expectations.

Why LAN?

LAN has successfully been serving as a Demolition Consultant to the DPMC for the past five (5) years. As a result, LAN is thoroughly familiar with the requirements of this contract, and our multidisciplinary staff is organized to efficiently complete task order work.

LAN also has a significant amount of experience in providing engineering services for public entities, including counties, municipalities, boards of education, and state agencies. A partial listing of public clients that LAN has provided architectural, engineering, surveying, and/or environmental consulting services for is provided below:

Municipalities	Educational		Other Agencies/Counties
Byram	Alpine	Oradell	Monmouth County
Clifton	Bloomingtondale	Paramus	New Jersey Community Development Corporation
Hawthorne	Boonton	Passaic	
Little Falls	Cliffside Park	Passaic County Vo-Tech	New Jersey Department of Environmental Protection (NJDEP) Division of Parks & Forestry
Midland Park	Cranford	Passaic Valley Regional	
Montvale	Cresskill	Paterson	New Jersey Department of Property Management and Construction (NJDPMC)
New Brunswick	Demarest	Pompton Lakes	
Newark	Denville	Prospect Park	New Jersey Schools Development Authority
North Haledon	Fair Lawn	Ramapo Indian Hills	North Jersey Developmental Center
Passaic	Florham Park	Ridgewood	Passaic County
Paterson	Hamburg	Ringwood	Passaic County Brownfields Commission
Prospect Park	Hawthorne	River Vale	Passaic County Department of Economic Development
Wanaque	Hopatcong	Rutherford	
Wayne	Lakeland Regional	Saddle River	Passaic Valley Sewerage Commissioners
West Milford	Long Beach Island	Sayreville	Paterson Parking Authority
	Madison	Totowa	Salvation Army
	Manalapan-Englishtown	Verona	
	Manchester Regional	Wanaque	
	Maywood	Wayne	
	North Haledon	West Milford	
	Norwood	West Orange	

LAN's experience relevant to this task order contract includes:

- Design services for demolition projects, including field investigation, review of existing conditions, and preparation of plans and specifications for bidding;
- Soil erosion and sediment control plans;
- Preparation of construction cost estimates;
- Bidding and award assistance, including pre-bid meetings, responses to Requests for Information, etc.;
- Construction administration services for demolition projects;
- Design plans and specifications for the removal of underground storage tanks;
- Licensed Site Remediation Professional (LSRP) services, including Preliminary Assessments, Site Investigations, Remedial Investigations, Remedial Action Workplans, Response Action Outcome letters, and other DEP reporting;
- Land use services, including freshwater wetlands, flood hazard area, Pinelands, and CAFRA; and
- Boundary and topographic surveys.

This experience is demonstrated in the case studies included herein.

New Jersey Department of Property Management and Construction



LAN has been providing architectural and engineering services to the NJ DPMC through various contracts since the 1990s. Specifically, LAN has provided design services for renovations, HVAC, sanitary sewer, emergency generators, fire alarm and fire suppression systems, roof replacements, and trail improvements. LAN has also provided land surveying services. Further, LAN has served as the design consultant for demolition projects, including a 7-acre farm in Lumberton, New Jersey and numerous residential properties demolished as part of the NJDEP Blue Acres Acquisition Program.

LAN Project Manager:

Stephen Secora, PE, PP, LEED^(R) AP, Vice President
Steven Ramiza, PE, LEED^(R) AP, Vice President

New Jersey Department of Environmental Protection (NJDEP) Division of Parks & Forestry



Contact:



LAN has been providing a range of services under a task order contract with the NJDEP Division of Parks and Forestry since 1995, and has worked on over 170 projects from High Point to Cape May. Projects have included architectural, engineering, surveying, wetlands identification and delineation, and environmental investigations and designs. Design projects have included the preparation of drawings and specifications, permitting, and construction administration. The most recent projects that LAN has performed under this task order contract have included the design of new aboveground storage tank installations at the Green Bank Maintenance Area in Wharton State Forest and Hackettstown Fish Hatchery.

LAN Project Manager:

Steven Ramiza, PE, LEED^(R) AP
Vice President

Case Studies

The following selection of case studies touch on LAN's capabilities, design innovation, and depth of experience relevant to the needs of NJDPMC.



ENR New York



2018



Experience

- New Jersey Department of Property Management and Construction
- NJDEP Division of Parks & Forestry

Case Studies

1. Blue Acres NJDPMC
2. New Union Ave Middle School (Don Bosco Tech)
3. Newark Housing Authority



BLUE ACRES DEMOLITIONS

NEW JERSEY DIVISION OF PROPERTY MANAGEMENT & CONSTRUCTION

ENVIRONMENTAL



BEFORE



AFTER

LAN has provided design consultant services for the demolition of residential properties as part of the NJDEP Blue Acres Acquisition Program since 2014.

These services have included preparing plans and specifications for demolition, preparing construction cost estimates, providing bid and award assistance, and providing construction administration. As part of these services, LAN subcontracted asbestos surveys and sampling for the properties to be demolished. These demolition projects included asbestos abatement.

Reference:



Completion Date:

Ongoing Since 2014

Project Manager:

Steven Ramiza, PE, LEEP AP

Project Number: 2.80076.0

LAN
LAN ASSOCIATES

ENGINEERING
PLANNING
ARCHITECTURE
SURVEYING
SINCE 1965

NEW UNION AVENUE MIDDLE SCHOOL (DON BOSCO TECH)

NEW JERSEY SCHOOLS DEVELOPMENT AUTHORITY

ENVIRONMENTAL / SITE FEASIBILITY



LAN was initially retained in 2005 by the New Jersey Schools Construction Corporation (NJSCC), now the New Jersey Schools Development Authority (NJSDA), to perform a variety of services on a task order basis for the former Don Bosco Tech campus in Paterson, New Jersey. As part of task order contracts, LAN performed site feasibility services, environmental investigations, underground storage tank removals, soil and groundwater investigations, hazardous building materials surveys, utility investigations, boundary and topographic surveys, and prepared a Level I Environmental Assessment Report pursuant to Executive Order 215.

A new \$58 million construction project was recently announced to replace the aging campus with a state of the art middle school for the neighborhood. As part of this project, LAN was responsible for the \$7.5 million abatement and demolition of all structures, as well as civil and environmental engineering in support of the Design-Build project to construct the new Union Avenue Middle School.

Reference:



Project Manager:
Steven J. Ramiza, PE, LEED® AP

Gerrit Visscher, LSRP

Project Number:
2.3606.03.7,
2.3606.04.1,
2.3606.05.1,
2.3606.05.2

LAN
LAN ASSOCIATES

ENGINEERING
PLANNING
ARCHITECTURE
SURVEYING
SINCE 1965

NEWARK HOUSING AUTHORITY

NEWARK HOUSING AUTHORITY

HOUSING AUTHORITY



LAN was retained by the Newark Housing Authority to prepare demolition drawings of the Ludlow Facility office and central boiler plant building located at 71 Ludlow Avenue. The existing building to be demolished consisted of a two and one half story structure which were used as a community center and boiler plant as part of a larger complex that had previously been demolished.

LAN services included providing specification and drawings for the building demolition and site work. A boundary and topographic survey of the property was performed to show any site improvements and to develop the proposed site plan. LAN provided a grading and drainage plan for the site for after the building was demolished. LAN prepared the submission to the Hudson Essex Passaic Soil Conservation District which included the Soil Erosion & Sediment Control Plan for the project. A pre-demolition survey of the building was performed along with reviewing the available reports regarding the underground storage tank, asbestos containing materials, and lead-based paint. Phase II reports and Remedial Action Work Plan documents were reviewed and incorporated into the demolition drawings. The drawings and specifications provided building and site demolition information including building elevations, floor plans, site and utility plan, site plan, and captioned photographs of the existing building. Underground utilities were addressed including heating and hot water piping, gas, water, electric, sanitary sewers, and storm sewers. After the building was demolished, the site was left to be top soiled and seeded. After completion of the site grading, LAN performed an as-built conditions survey of the project area in anticipation of the Newark Housing Authority's next phase of construction for the site which was going to be a Training, Recreation, Educational Center for the Dayton neighborhood in the South Ward of Newark.

Reference:

Cost: \$388,000

Completion Date: February 2015

Project Manager: Kenneth H. Karle,
RA, PP, PE, LEED AP

Project Number: 2.2851.08.05

LAN
LAN ASSOCIATES

ENGINEERING
PLANNING
ARCHITECTURE
SURVEYING INC.
SINCE 1965

Experience of LAN's Subconsultants

As discussed above, LAN plans to use Environmental Connection, Inc. of Trenton, New Jersey as a subconsultant to perform hazardous building material evaluations, and to prepare asbestos abatement specifications. LAN also plans to use Richard Grubb and Associates, Inc. as a subconsultant to perform cultural resources screening, as necessary, to identify known historic properties and archaeologically sensitive areas.

LAN has been working collaboratively with both of these subconsultants for many years, and has a good working relationship with them. These firms both have extensive experience in performing the tasks that LAN plans to subcontract to them. Their experience is summarized below.

Firm Experience



Environmental Connection, Inc., (EC) a subsidiary of Vertical Technologies, Inc., (VTI) was established in May of 1983 for the purpose of serving as a multi-dimensional Environmental Management Corporation. Our corporate headquarters are located at 120 North Warren Street in Trenton, New Jersey. The majority of the firm's efforts have been directed to serving clients in the State of New Jersey, State of New York, State of Connecticut and the Commonwealth of Pennsylvania. EC's central location in the Capital City of Trenton, New Jersey, allows for immediate response to clients in these States within two (2) hours, or less. With our headquarters in the City of Trenton, Central Offices of various State Agencies are accessible within minutes to attend meetings (scheduled or emergency) and obtain construction permits from the State of New Jersey, Department of Community Affairs (DCA). Additionally, EC can arrive at most sites within the State of New Jersey within no more than two (2) hours from leaving its offices.

EC has successfully executed numerous term contracts with entities such as the State of New Jersey, Department of Treasury, Division of Property Management and Construction, (DPMC); the State of New Jersey, Department of Law and Public Safety, Juvenile Justice Commission, (JJC); the State of New Jersey, Department of Corrections; the State of New

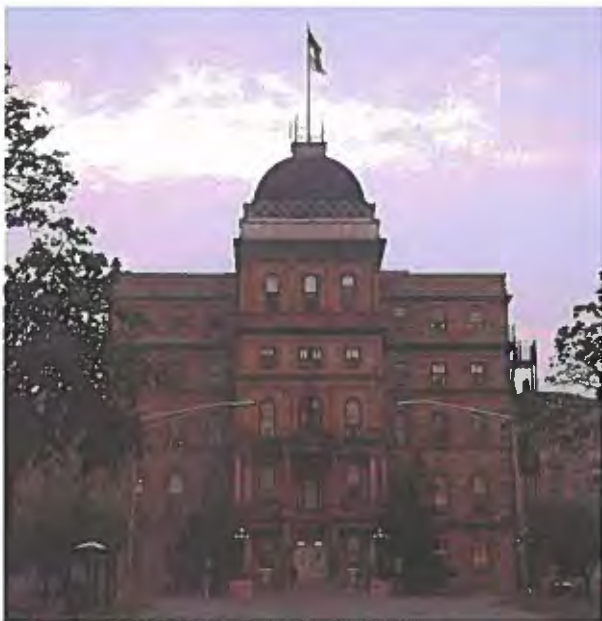
Jersey, Department of Human Services, (DHS); the State of New Jersey, Department of Children and Families, (DCF); the State of New Jersey, Department of Transportation, (DOT); the State of New Jersey, Department of Environmental Protection, (DEP); the State of New Jersey, Department of Education, (DOE); the City of New York, School Construction Authority, (SCA); Lucent Technologies, Inc.; Wells Fargo Bank; etc. Our staff has extensive experience in working closely with State and Federal agencies. This experience allows us to effectively and expeditiously process permit applications, variances, and project close-out documentation, as required. In addition, we service many other entities on an as needed basis, including Universities, Colleges and Elementary and Secondary School Districts. Upon request, EC will be pleased to submit additional listings of clients and completed projects as deemed appropriate.

EC has an extensive background and has amassed a lengthy list of qualifications in the Management of Asbestos Containing Materials; Construction Cost Estimating (CCE) for Abatement; Operations and Maintenance (O&M) Program Design; United States Department of Labor, Occupational Safety and Health Administration, (OSHA) Compliance Consultation; Environmental Sampling; Compliance Consultation with respect to the Asbestos Hazard Emergency Response Act, (AHERA); Polarized Light Microscopy (PLM) and Phase Contrast Microscopy (PCM) on-site Analysis; Lead Hazard Management, X-ray Fluorescence (XRF) Lead Based Paint (LBP) Inspections/Risk Assessments; Facilitation of Job Meetings; in-house Computer Aid Design (CAD) services, Regulatory Compliance Assessment, Property Transfer Audits, Phase I Environmental Site Assessments, Phase II Testing, Phase III Design and Monitoring, Hazardous Materials (HAZMAT) and Polychlorinated Biphenyls (PCB) Assessments, Sampling and Waste Management; Potable Water Collection and Analysis, Organic Vapor Surveys; Fugitive Emissions Monitoring; Regulatory Compliance Audits; Geo-Technical Services; Lyme Disease Consultations; Indoor Air Quality (IAQ) Studies and Microbial Contamination Investigations; Waste Management Plan Developments and/or Audits; Development of Environmental Remediation Technical Specifications, Contract Development Bid Administration, Contract Award Recommendations and Contract Management.

Environmental Connection, Inc., (EC) is an Agency Consultant for the State of New Jersey, Department of Property Management and Construction (DPMC), and has completed hundreds of projects at most of the State's Departmental facilities. The projects include, but are not limited to, surveys, designs and project monitoring associated with asbestos containing materials, lead based paint, universal waste; emergency responses to identify, monitor, perform clearance sampling and prepare project close-out documents associated with potential and/or confirmed asbestos fiber release episodes; indoor air quality investigations; and microbial and water incursion investigations, remediation design and project oversight.

Project Experience:

Greystone Park Psychiatric Hospital



As a team member to the Architect of Record, EC was tasked with the survey for hazardous building materials for the Main Building and associated outlying structures of the old campus to the Greystone Park Psychiatric Hospital (GPPH) in Morris County, New Jersey.

The survey presented unique obstacles relative to site safety, including; confined spaces, live electric, and structural hazards. EC was able to complete the assessment and issue a report on our findings in a timely and efficient manner.

EC's report addressed the regulatory implications to the remediation design as part of our report's recommendations, as well as identified the aforementioned obstacles, that will also affect the remediation design. Although the main building's ultimate fate is yet to be determined, EC is currently finalizing the development of design documents for the remediation of hazardous building materials in conjunction with the team's demolition, environmental and universal waste remediation specifications for the eighteen (18) outlying facilities as well as designing remediation alternatives for the Main Building.

Essex County Hospital



As a consultant hired by the County of Essex, EC worked in conjunction with the overall cognizant consultant for the subject site, Hatch Mott MacDonald, to perform the assessment of asbestos containing materials within the former Essex County Hospital. The purpose of the assessment was to determine those materials within the twelve (12) site buildings which were asbestos containing and would require abatement in advance of the demolition of these facilities. EC, working in conjunction with Hatch Mott MacDonald, provided assessment and sampling activities within those facilities where additional work was required.

EC collected samples in sufficient quantity having them analyzed via Polarized Light Microscopy (PLM) in accordance with the Asbestos Hazard Emergency Response Act/Asbestos School Hazard Abatement Reauthorization Act (ASHERA/ASHARA) regulations.

In addition, where necessary, EC also forwarded samples which were Non-friable Organically Bound (NOB) materials, for Transmission Electron Microscopy (TEM) methodology as mandated by the State of New Jersey's Departments of Health and Labor regulations. Upon receipt of the laboratory results, EC prepared a tabular report which summarized all of the materials identified, assessed and sampled. EC reported those materials which were identified as being asbestos containing and the materials locations in the various facilities. These tabular reports were sent to the County as well as a copy given to Hatch Mott MacDonald for inclusion into their design documents for the razing of the facilities.

**Blue Acres - Woodbridge and South River
Residential Properties**

EC was contracted as a team member to the Demolition Consultant, LAN, to perform the assessments of eleven (11) residential properties in Woodbridge, New Jersey and sixteen (16) residential properties in South River, New Jersey. The properties are slated to be demolished under the Blue Acres program of the New Jersey Department of Environmental Protection (NJDEP) as a result of being damaged during the course of Hurricane Sandy. Accordingly, EC in conjunction with the Demolition Consultant provided inspection of the residential properties. EC provided an inspection for asbestos containing materials in each of the properties and then prepared a report of the findings which was sent to the Demolition Consultant. EC has recently prepared a Specification section which is to be incorporated into the overall demolition bid package for the State of New Jersey.



Richard Grubb & Associates, Inc. (RGA) was established in 1988 as a full-service cultural resource management firm and has since grown to become one of the largest, independent archaeological and historic preservation

consulting companies in the Mid-Atlantic, Midwest, and Northeast regions. RGA's goal is to assist public and private clients through the process of complying with federal, state, county, and municipal cultural resource and historic preservation regulations. RGA has a multi-disciplinary staff of cultural resource professionals that meet or exceed the Secretary of Interior's Qualifications Standards (36CFR61) for archaeology, architectural history, and history. The Principal Investigators for archaeology have performed or supervised site assessments and screenings, Phase IA, Phase I and Phase II archaeological surveys and Phase III data recovery investigations of prehistoric and historic sites. The Principal Investigators for architectural history and history have performed or supervised reconnaissance and intensive-level architectural surveys and have successfully completed cultural resource mitigation, including Historic American Buildings Survey (HABS)/ Historic American Engineering Record (HAER) documentation, interpretive displays, educational brochures, preservation plans, and bridge preservation covenants. All Principal Investigators routinely undertake assessments of National Register eligibility and effects, assess projects for adherence to the Secretary of the Interior's Standards for the Treatment of Historic Properties, and consult and coordinate with the various State Historic Preservation Offices for the preparation and completion of Memorandum of Agreement stipulations and other mitigation measures. RGA also has a full-scale archaeological laboratory and qualified staff to ensure compliance with 36CFR79, Curation of Federally-Owned and Administered Archaeological Collections.

RGA has a current staff size of 36 including Alice Domm, Chief Executive Officer and President; Richard Grubb, Vice President; 7 full-time principal investigators for archaeology; 13 full-time principal investigators for architectural history and history; and 14 field directors, field technicians, material culture specialists, GIS and CADD technicians, and administrative staff. Fifteen RGA principal investigators and field directors hold current OSHA and Hazwoper training certifications. RGA is a prequalified consultant with the NJDPMC under Archaeology and as a Historic Preservation Consultant,

and has successfully completed cultural resource surveys for several NJDPMC-sponsored projects.

Projects conducted within the last five years include Phase IA historical and archaeological surveys for proposed improvements to two NJDOT maintenance yards, one in Old Bridge Township, Middlesex County and the other in Folsom Township, Atlantic County (2017-2018). In 2015-2016, RGA completed similar survey for a proposed new sanitary sewer located on Island Beach State Park within a 7.9-mile stretch of Shore Road in Ocean County. In 2016, the firm provided archaeological monitoring services for the Stow Creek State Park Boat Ramp and Parking Rehabilitation project at Stow Creek State Park in Stow Creek Township, Cumberland County. In 2014, RGA completed the written historical and descriptive data, and photographic components of an Historic American Buildings Survey of the Marlboro Psychiatric Hospital prior to its demolition. Additional experience includes a Phase IA/IB archaeological survey and Application for Project Authorization for the replacement of the DeMott Lane Bridge over the Delaware and Raritan Canal in Franklin Township, Somerset County (2013), and archaeological monitoring during construction in connection with the rehabilitation Elmer Lake Dam, Borough of Elmer, Salem County (2011-2012).

Richard Grubb & Associates, Inc. (RGA) project samples related to the scope of work are included below.

Project Experience:

New Jersey Department of Transportation Winter Yard, Old Bridge Township, Middlesex County, New Jersey (NJDPMC)

New Jersey Department of Transportation's proposed Winter Yard in Old Bridge Township, Middlesex County. Project plans called for the construction of new salt storage facilities within an approximately 5.5-acre area. All work was performed in compliance with the NJDEP's Freshwater Wetlands Protection Act (N.J.A.C. 7:7A) and New Jersey Executive Order No. 215. The purpose of the Phase IA historical and archaeological survey was to determine if documented archaeological resources existed within Area of Potential Effects (APE), to assess the potential for the APE to contain undocumented prehistoric and historic archaeological sites, and to make management recommendations for further study if necessary. Background research and a pedestrian survey determined that portions of the APE had a high sensitivity for prehistoric archaeological resources and a low potential to contain historic archaeological resources. A Phase IB archaeological survey was recommended within undisturbed portions of the APE proposed for ground disturbance and having a high prehistoric sensitivity.

Richard Grubb & Associates, Inc. (RGA) will also be a sub-consultant on this project. A sample of projects related to the scope of work are included below.

New Sanitary Sewer, Island Beach State Park, Berkeley and Ocean Townships, Ocean County, New Jersey (NJDPMC)

RGA completed a Phase IA historical and archaeological survey within the Area of Potential Effects for a proposed new sanitary sewer at Island Beach State Park within a 7.9-mile stretch of Shore Road. The survey was carried out in compliance with the requirements of a Coastal Area Facility Review Act permit from the New Jersey Department of Environmental Protection under the New Jersey Division of Land Use Regulation Program. The purpose of the survey, which included background

research, consultation with interested parties, and an archaeological field reconnaissance, was to assess the potential for significant archaeological resources to be affected by the proposed undertaking. The survey determined that since the proposed improvements would take place beneath the existing roadway, parking lots and walkways, it was not anticipated that any significant archaeological resources would be impacted due to previous disturbance. No further archaeological survey was recommended.

Marlboro Psychiatric Hospital, Marlboro Township, Monmouth County, New Jersey (NJDPMC)

RGA completed the written historical and descriptive data, and photographic components of an Historic American Buildings Survey (HABS) of the Marlboro Psychiatric Hospital. In one of the largest projects of its type, the interior and exterior of approximately 85 structures were comprehensively photographed in accordance with the standards and guidelines set forth by the National Park Service for HABS recordation. Approximately 1400 images of the hospital have been taken. Primary and secondary sources were also consulted as part of the research, including original plans prepared by the State of New Jersey's Division of Architecture and Construction, Department of Institutions and Agencies. The Marlboro Psychiatric Hospital was New Jersey's third state hospital for the mentally ill. With design consultation from Ernest F. Guilbert and James O. Betelle, the hospital was largely built in stages during the early 1930s.

Since the Marlboro Psychiatric Hospital operated as a self-sufficient institution for the majority of its operating years it included a farm located adjacent to the complex, which was also documented as part of the HABS recordation. Additionally, the hospital's setting, designed by the landscape architects, Brinley and Holbrook, was extensively photographed. This work was conducted at the behest of the State of New Jersey to record and document the architectural and historical significance of the complex prior to its demolition.

KEYTEAM MEMBER PROJECT EXPERIENCE DATA SHEETS

KEY TEAM MEMBER PROJECT EXPERIENCE DATA SHEET

NAME Steven J. Ramiza, PE

TITLE Vice President

FIRM LAN Assoc., Engineering, Planning, Arch., Surveying, Inc.

PROJECT TITLE LOCATION AND TOTAL CONSTRUCTION COST OR FEE	A/E OF RECORD FOR THIS REFERENCED PROJECT	SPECIFIC TYPE OF WORK EXPERIENCE (STUDY, SCHEMATIC, CONSTRUCTION ADMINISTRATION)	TEAM MEMBERS SPECIFIC ROLE OR TITLE ON THE REFERENCED PROJECT	DURATION OF TEAM MEMBER'S INVOLVEMENT OF THE REFERENCED PROJECT (IN MONTHS)	% OF TIME DURING DURATION BASED UPON A 40 HOUR WEEK	DATES OF THE TEAM MEMBER'S INVOLVEMENT IN THE REFERENCED PROJECT	CLIENT NAME CONTRACT PERSON AND PHONE NUMBER
DPMC/DEP Blue Acres Program (\$300,000 in Fees)	LAN Associates, Engineering, Planning, Architecture, Surveying, Inc.	Design, Construction Documents, Permitting, Contract Administration	Principal in Charge	10	10	May 2018 - Present	
NJSDA New Union Ave Middle School (\$1.8M in Fees)	LAN Associates, Engineering, Planning, Architecture, Surveying, Inc.	Design, Contract Administration	Principal in Charge	35	30	August 2015 - Present	
NJDEP Division of Parks & Forestry (\$3M in Fees)	LAN Associates, Engineering, Planning, Architecture, Surveying, Inc.	Study, Design, Construction Administartion	Project Manager	20 Years (term contract)	20	July 1999 - Present	
Hazardous Building Materials Abatement at the Paterson Armory Paterson, NJ (\$25,000 in Fees)	LAN Associates, Engineering, Planning, Architecture, Surveying, Inc.	Plans & Specifications for the Removal of Hazardous Building Materials	Principal in Charge	4	20	May 2014 - November 2015	
NJDOT Statewide Maintance Yard UST Study (\$2.5M)	LAN Associates, Engineering, Planning, Architecture, Surveying, Inc.	Study, Preliminary Design	Principal in Charge	2	75	April 2017 - June 2017	

* A KEY TEAM MEMBER IS A TECHNICAL OR MANAGEMENT PERSON DEVOTING 20% OR MORE OF THEIR TIME TO ANY PHASE OF THE PROJECT

KEY TEAM MEMBER PROJECT EXPERIENCE DATA SHEET

NAME Elizabeth Bouvier, PE, CIH

TITLE Director of Regulatory Compliance

FIRM LAN Assoc., Engineering, Planning, Arch. Surveying, Inc.

PROJECT TITLE LOCATION AND TOTAL CONSTRUCTION COST OR FEE	A/E OF RECORD FOR THIS REFERENCED PROJECT	SPECIFIC TYPE OF WORK EXPERIENCE (STUDY, SCHEMATIC, CONSTRUCTION ADMINISTRATION)	TEAM MEMBERS SPECIFIC ROLE OR TITLE ON THE REFERENCED PROJECT	DURATION OF TEAM MEMBER'S INVOLVEMENT OF THE REFERENCED PROJECT (IN MONTHS)	% OF TIME DURING DURATION BASED UPON A 40 HOUR WEEK	DATES OF THE TEAM MEMBER'S INVOLVEMENT IN THE REFERENCED PROJECT	CLIENT NAME CONTRACT PERSON AND PHONE NUMBER
DPMC/DEP Blue Acres Program LAN Fees: \$300,000	LAN Associates, Engineering, Planning, Architecture, Surveying, Inc.	Design, Construction Documents, Permitting, Contract Administration	Engineer/ Project Manager	10	20	5/18 - Present	
New Union Ave Middle School (Former Don Bosco Academy/Technical High School) Paterson, NJ LAN Fee: Approx. \$1.8M	LAN Associates, Engineering, Planning, Architecture, Surveying, Inc.	Demolition Plans & Specifications, Plans & Specifications for Asbestos Abatement, Site Feasibility Investigation Services, Site Remediation Services	Engineer	Approx. 36	20	7/05 - 2/19	
Hazardous Building Materials Abatement at the Paterson Armory Paterson, NJ LAN Fee: \$25,000	LAN Associates, Engineering, Planning, Architecture, Surveying, Inc.	Plans & Specifications for the Removal of Hazardous Building Materials	Engineer	4	20	5/14 - 11/15	
NJDEP Division of Parks & Forestry LAN Fee: Approx. \$3M	LAN Associates, Engineering, Planning, Architecture, Surveying, Inc.	Study, Design	Engineer	14 Years (term contract)	20	2005 - Present	
The Vista at Christian Health Care Center, Wyckoff, NJ \$90,000,000	LAN Associates, Engineering, Planning, Architecture, Surveying, Inc.	Demolition Plans & Specifications	Engineer	5	10	7/18 - 12/18	

* A KEY TEAM MEMBER IS A TECHNICAL OR MANAGEMENT PERSON DEVOTING 20% OR MORE OF THEIR TIME TO ANY PHASE OF THE PROJECT

KEY TEAM MEMBER PROJECT EXPERIENCE DATA SHEET

NAME Erik Boe, PE, LEED AP

TITLE Director of Civil Engineering

FIRM LAN Associates, Engineering, Planning, Architecture, Surveying, Inc.

PROJECT TITLE LOCATION AND TOTAL CONSTRUCTION COST OR FEE	A/E OF RECORD FOR THIS REFERENCED PROJECT	SPECIFIC TYPE OF WORK EXPERIENCE (STUDY, SCHEMATIC, CONSTRUCTION ADMINISTRATION)	TEAM MEMBERS SPECIFIC ROLE OR TITLE ON THE REFERENCED PROJECT	DURATION OF TEAM MEMBER'S INVOLVEMENT OF THE REFERENCED PROJECT (IN MONTHS)	% OF TIME DURING DURATION BASED UPON A 40 HOUR WEEK	DATES OF THE TEAM MEMBER'S INVOLVEMENT IN THE REFERENCED PROJECT	CLIENT NAME CONTRACT PERSON AND PHONE NUMBER
Edison Board of Education James Monroe School \$21,000,000	LAN Associates, Inc. Kenneth H. Karle, RA, PE	Design, Construction Documents	Civil Engineer	41	10%	4/14 - 9/17	
Shiloh Bible Camp Gymnasium Building, West Milford, NJ \$625,000	LAN Associates, Inc. Erik E. Boe, PE	Design, Construction Documents, Permitting, Contract Administration	Civil Engineer	48	10%	2008-2014	
Chester Union Free School District Athletic Field Improvements at Maple Ave School, Chester, NY \$488,000	LAN Associates, Inc. Erik E. Boe, PE	Design & Contract Administration	Civil Engineer	29	10%	12/15 - Present	
Valley Middle School Site Improvements, Oakland, NJ \$540,000	LAN Associates, Inc. Erik E. Boe, PE	Design & Contract Administration	Civil Engineer	5	20%	4/15 - 9/15	
Goshen High School Additions & Site Improvements, Goshen, NY \$30,400,000	LAN Associates, Inc. Erik E. Boe, PE	Design & Contract Administration	Civil Engineer	39	20%	2015-Present	
The Vista at Christian Health Care Center, Wyckoff, NJ \$90,000,000	LAN Associates, Inc. Kenneth H. Karle, RA, PE	Design & Contract Administration	Civil Engineer	108	20%	2009-Present	

* A KEY TEAM MEMBER IS A PERSON WITH A CRITICAL ROLE IN THE PROJECT AND/OR DEVOTING 20% OR MORE OF THEIR TIME TO ANY PHASE OF THE PROJECT

KEY TEAM MEMBER PROJECT EXPERIENCE DATA SHEET

NAME Matthew Webb, PLS

TITLE Director of Surveying

FIRM LAN Assoc., Engineering, Planning, Arch., Surveying, Inc.

PROJECT TITLE LOCATION AND TOTAL CONSTRUCTION COST OR FEE	A/E OF RECORD FOR THIS REFERENCED PROJECT	SPECIFIC TYPE OF WORK EXPERIENCE (STUDY, SCHEMATIC, CONSTRUCTION ADMINISTRATION)	TEAM MEMBERS SPECIFIC ROLE OR TITLE ON THE REFERENCED PROJECT	DURATION OF TEAM MEMBER'S INVOLVEMENT OF THE REFERENCED PROJECT (IN MONTHS)	% OF TIME DURING DURATION BASED UPON A 40 HOUR WEEK	DATES OF THE TEAM MEMBER'S INVOLVEMENT IN THE REFERENCED PROJECT	CLIENT NAME CONTRACT PERSON AND PHONE NUMBER
NJSDA New Union Ave Middle School (\$1.8M in Fees)	LAN Associates, Engineering, Planning, Architecture, Surveying, Inc.	Boundary, Topographic, & Utility Surveys	Professional Land Surveyor	35	10%	August 2015 - Present	
DPMC/DEP Blue Acres Program LAN Fees: \$300,000	LAN Associates, Engineering, Planning, Architecture, Surveying, Inc.	Survey Fieldwork, Drafting and Final Review	Professional Land Surveyor	12	20%	2/14-4/17	
Edison Board of Education James Monroe School \$21,000,000	LAN Associates, Engineering, Planning, Architecture, Surveying, Inc.	Survey Fieldwork, Drafting and Final Review	Professional Land Surveyor	41	20%	4/14 - 9/17	
NJDEP - Parks & Forestry Stokes State Forest – Maintenance Bldg. Septic Replacement \$11,194	LAN Associates, Engineering, Planning, Architecture, Surveying, Inc.	Survey Fieldwork and Drafting	Survey Technician/ Draftsman	1	25%	1/05 - 1/05	
NJDEP - Parks & Forestry Colliers Mills WMA Above Ground Storage Tank Installation Survey - \$2,466	LAN Associates, Engineering, Planning, Architecture, Surveying, Inc.	Coordination of Survey Work	Project Manager	1	5%	11/10 - 12/10	

* A KEY TEAM MEMBER IS A TECHNICAL OR MANAGEMENT PERSON DEVOTING 20% OR MORE OF THEIR TIME TO ANY PHASE OF THE PROJECT

KEY TEAM MEMBER PROJECT EXPERIENCE DATA SHEET

NAME Gerrit Visscher, LSRP

TITLE Director of Environmental Services

FIRM LAN Assoc., Engineering, Planning, Arch., Surveying, Inc.

PROJECT TITLE LOCATION AND TOTAL CONSTRUCTION COST OR FEE	A/E OF RECORD FOR THIS REFERENCED PROJECT	SPECIFIC TYPE OF WORK EXPERIENCE (STUDY, SCHEMATIC, CONSTRUCTION ADMINISTRATION)	TEAM MEMBERS SPECIFIC ROLE OR TITLE ON THE REFERENCED PROJECT	DURATION OF TEAM MEMBER'S INVOLVEMENT OF THE REFERENCED PROJECT (IN MONTHS)	% OF TIME DURING DURATION BASED UPON A 40 HOUR WEEK	DATES OF THE TEAM MEMBER'S INVOLVEMENT IN THE REFERENCED PROJECT	CLIENT NAME CONTRACT PERSON AND PHONE NUMBER
New Union Ave Middle School (Former Don Bosco Academy/Technical High School) Paterson, NJ LAN Fee: Approx. \$1.8M	LAN Associates, Engineering, Planning, Architecture, Surveying, Inc.	Soil & Groundwater Investigations, Historic Fill, Tank Closures	LSRP of Record	7 years	5	2012-Present	
NJDEP Division of Parks & Forestry LAN Fee: Approx. \$3M	LAN Associates, Engineering, Planning, Architecture, Surveying, Inc.	Soil & Groundwater Investigations, Tank Closures	LSRP of Record	14 Years (term contract)	20	2005 - Present	
NJ Department of Treasury DPMC: Farm Building Demolition, Lumberton, NJ	LAN Associates, Engineering, Planning, Architecture, Surveying, Inc.	Farm Buildings Demolition, UST & AST removals, asbestos, hazardous material removal	LSRP Oversight	6 months	5%	2015-2017	
West Milford BOE Tank Closures & Remedial Investigations at Bus Garage 51 Highlander Ave, West Milford, NJ	LAN Associates, Engineering, Planning, Architecture, Surveying, Inc.	Tank/Site Closure	LSRP of Record	36	2%	6/12 - 12/15	
Manalapan- Englishtown Reg. School District, Tank Closures(s), Site Investigations	LAN Associates, Engineering, Planning, Architecture, Surveying, Inc.	Tank/Site Closure	LSRP of Record	12	2%	12/14 - 12/15	

* A KEY TEAM MEMBER IS A TECHNICAL OR MANAGEMENT PERSON DEVOTING 20% OR MORE OF THEIR TIME TO ANY PHASE OF THE PROJECT

KEY TEAM MEMBER PROJECT EXPERIENCE DATA SHEET

NAME Steven Mania

TITLE President

FIRM Environmental Connection, Inc.

PROJECT TITLE LOCATION AND TOTAL CONSTRUCTION COST OR FEE	AGE OF RECORD FOR THIS REFERENCED PROJECT	SPECIFIC TYPE OF WORK EXPERIENCE (STUDY, SCHEMATIC, CONSTRUCTION ADMINISTRATION)	TEAM MEMBERS SPECIFIC ROLE OR TITLE ON THE REFERENCED PROJECT	DURATION OF TEAM MEMBER'S INVOLVEMENT OF THE REFERENCED PROJECT (IN MONTHS)	% OF TIME DURING DURATION BASED UPON A 40 HOUR WEEK	DATES OF THE TEAM MEMBER'S INVOLVEMENT IN THE REFERENCED PROJECT	CLIENT NAME CONTRACT PERSON AND PHONE NUMBER
New Jersey Department of Human Services Liberty State Park 9/11 Relief Project Jersey City, New Jersey \$2,000,000.00	Environmental Connection, Inc.	Assisted NJDHS in Facilitating Site Preparations for 9/11 Victim Families	Coordinator	< 1 Month	20%	10/2001	
New Jersey State House Complex Trenton, New Jersey \$100,000.00	Environmental Connection, Inc.	Air Handler Modifications Pilot Project	Project Management, Quality Control	6 Months	4%	7/2005 - 12/2008	
New Jersey Department of Human Services New Lisbon Developmental Center Food Services New Lisbon, New Jersey \$+70,000.00	Environmental Connection, Inc.	Asbestos Fiber Release Episode Management	Project Management, Quality Control & Coordinator	<1 Month	10%	10/1/2008 - 10/3/2008	
Woodbine Developmental Center Boiler Replacement Woodbine, NJ \$1,200,000.00	Miller-Remick Corporation	Environmental Survey, Design and Construction Administration	Project Management, Quality Control & Coordinator	18 months	1%	11/2009 - 5/2011	
New Lisbon Developmental Center, Gas Fired Heating Boilers New Lisbon, NJ \$2,000,000.00	Miller-Remick Corporation	Environmental Survey, Design and Construction Administration	Project Management, Quality Control & Coordinator	17 months	2%	11/2010 - 4/2012	
Greystone Park Psychiatric Hospital Demolition and Site Restoration Morris Plains, NJ \$25,000,000.00	The RBA Group	Feasibility Study, Environmental Survey and Design for Demolition of 20+ Buildings on 90 acre site	Project Management, Quality Control & Coordinator	43 Months	5%	2/2011 - 9/2014	
Johnstone Training Center School, Tramburg Building Laboratory Dissassembly & Asbestos Abatement Burlington County, NJ \$150,000.00	NJ Dept. of Treasury DPMC	Environmental Survey, Design and Construction Administration	Project Management, Quality Control & Coordinator	10 months	2%	7/2015-5/2016	

* A KEY TEAM MEMBER IS A PERSON WITH A CRITICAL ROLE IN THE PROJECT AND/OR DEVOTING 20% OR MORE OF THEIR TIME TO ANY PHASE OF THE PROJECT

KEY TEAM MEMBER PROJECT EXPERIENCE DATA SHEET

NAME Roland C. Jones, CIH

TITLE Vice President

FIRM Environmental Connection, Inc.

PROJECT TITLE LOCATION AND TOTAL CONSTRUCTION COST OR FEE	A/E OF RECORD FOR THIS REFERENCED PROJECT	SPECIFIC TYPE OF WORK EXPERIENCE (STUDY, SCHEMATIC, CONSTRUCTION ADMINISTRATION)	TEAM MEMBERS SPECIFIC ROLE OR TITLE ON THE REFERENCED PROJECT	DURATION OF TEAM MEMBER'S INVOLVEMENT OF THE REFERENCED PROJECT (IN MONTHS)	% OF TIME DURING DURATION BASED UPON A 40 HOUR WEEK	DATES OF THE TEAM MEMBER'S INVOLVEMENT IN THE REFERENCED PROJECT	CLIENT NAME CONTRACT PERSON AND PHONE NUMBER
Vineland Developmental Center, Chiller Replacements for Residential Cottages Vineland, NJ \$10,000,000.00	Princeton Engineering Group	Asbestos Containing Material, LBP Survey, Design and Construction Administration	Project Manager, Project Designer	18 months	10%	6/2007 - 12/2008	
Port Authority of NY & NJ World Trade Center Redevelopment New York, NY \$16,000,000,000.00	Thacher Associates	Quality Control for Soil Characterization, Asbestos Abatement & Environmental Controls	Integrity Monitor	42 months	75%	9/2007 - 4/2011	
Garfield Board of Education, Garfield High School, Laboratory Renovations, Garfield, NJ \$500,000.00	DiCara Rubino Architects	Asbestos Containing Material, Heavy Metals Survey, Remediation Design & Construction Administration	Project Manager, Project Designer	3 Months	10%	4/2011 - 7/2011	
Temple B'nai Jeshurun Asbestos Abatement & Disposal Short Hills, NJ \$750,000.00	Environmental Connection, Inc.	Asbestos Containing Material Survey, Design & Construction Administration	Project Manager, Project Designer	11 Months	20%	9/2012 - 8/2013	
Matawan-Aberdeen Regional School District 5 Boiler Rooms Asbestos Abatement & Disposal, Aberdeen, NJ \$80,000.00	Environmental Connection, Inc.	Asbestos Containing Material Survey, Design & Construction Administration	Project Manager, Project Designer	3 Months	20%	5/2014 - 8/2014	
Johnstone Training Center School, Tramburg Building Laboratory Dissassembly & Asbestos Abatement Burlington County, NJ \$150,000.00	NJ Dept. of Treasury DPMC	Environmental Survey, Design and Construction Administration	Project Manager, Quality Control & Coordinator	10 Months	20%	7/2015-5/2016	
Edna Mahon Correctional Facility Asbestos Abatement & Disposal, Clinton, NJ \$20,000.00	NJ Dept. of Corrections	Asbestos Abatement Design & Construction Administration	Project Manager, Project Designer	6 Months	20%	4/2016-10/2016	

* A KEY TEAM MEMBER IS A PERSON WITH A CRITICAL ROLE IN THE PROJECT AND/OR DEVOTING 20% OR MORE OF THEIR TIME TO ANY PHASE OF THE PROJECT

KEY TEAM MEMBER PROJECT EXPERIENCE DATA SHEET

NAME Dominick Dercole

TITLE Project Manager

FIRM Environmental Connection, Inc.

PROJECT TITLE LOCATION AND TOTAL CONSTRUCTION COST OR FEE	A/E OF RECORD FOR THIS REFERENCED PROJECT	SPECIFIC TYPE OF WORK EXPERIENCE (STUDY, SCHEMATIC, CONSTRUCTION ADMINISTRATION)	TEAM MEMBERS SPECIFIC ROLE OR TITLE ON THE REFERENCED PROJECT	DURATION OF TEAM MEMBER'S INVOLVEMENT OF THE REFERENCED PROJECT (IN MONTHS)	% OF TIME DURING DURATION BASED UPON A 40 HOUR WEEK	DATES OF THE TEAM MEMBER'S INVOLVEMENT IN THE REFERENCED PROJECT	CLIENT NAME CONTRACT PERSON AND PHONE NUMBER
Woodbridge School	Environmental Connection, Inc.	Asbestos Inspection, NJAC 5'23-8. Asbestos Abatement Design & Monitoring	Project Manager Building Inspector Project Designer	2 years	20%	03/2014-08/2015	
Township of Woodbridge \$50,000.00	Environmental Connection, Inc.	Asbestos Inspections, Abatement Design & Monitoring	Project Manager Building Inspector Project Designer	5 Years	20%	12/2013-ongoing	
NJ Dept. of Treasury, DPMC, Blue Acres Project \$500,000.00	Environmental Connection, Inc.	Asbestos Assessments and Reporting	Project Manager Building Inspector	4 Years	10%	03/2014-02/2019	
NJDOT Maintenance Yards \$200,000.00	Environmental Connection, Inc.	Asbestos, Lead Based Paint & PCB Assessments	Project Manager Building Inspector Project Designer	5 years	25%	03/2013-ongoing	
Garden State Correctional & Wagner Youth Correctional Facilities \$25,000.00	Environmental Connection, Inc.	Asbestos Monitoring	Project Manager Building Inspector	1 month	50%	09/2014-10/2014	
Mercer County Courthouse Annex Bldg \$50,000.00	Environmental Connection, Inc.	Asbestos Inspection and Project Designer	Project Designer Project Manager Building Inspector	12 Months	20%	12/2013-1/2014	

* A KEY TEAM MEMBER IS A PERSON WITH A CRITICAL ROLE IN THE PROJECT AND/OR DEVOTING 20% OR MORE OF THEIR TIME TO ANY PHASE OF THE PROJECT

KEY TEAM MEMBER PROJECT EXPERIENCE DATA SHEET

NAME Jordan Reed

TITLE Project Manager

FIRM Environmental Connection, Inc.

PROJECT TITLE LOCATION AND TOTAL CONSTRUCTION COST OR FEE	A/E OF RECORD FOR THIS REFERENCED PROJECT	SPECIFIC TYPE OF WORK EXPERIENCE (STUDY, SCHEMATIC, CONSTRUCTION ADMINISTRATION)	TEAM MEMBERS SPECIFIC ROLE OR TITLE ON THE REFERENCED PROJECT	DURATION OF TEAM MEMBER'S INVOLVEMENT OF THE REFERENCED PROJECT (IN MONTHS)	% OF TIME DURING DURATION BASED UPON A 40 HOUR WEEK	DATES OF THE TEAM MEMBER'S INVOLVEMENT IN THE REFERENCED PROJECT	CLIENT NAME CONTRACT PERSON AND PHONE NUMBER
NJ Dept. of Treasury, DPMC, Blue Acres Project \$500,000.00	Environmental Connection, Inc.	Asbestos Assessments and Reporting. Project Design	Project Manager Building Inspector	3 Months	20%	12/2018-02/2019	
Hunterdon Developmental Center \$68,000.00	Environmental Connection, Inc.	Legionella Investigation	Project Manager Industrial Hygienist	13 Months	20%	12/2017-8/2018	
Stockton University \$43,000.00	Environmental Connection, Inc.	ACM Investigation and Asbestos Management Plan Development	Project Manager Project Designer Building Inspector	6 Months	30%	2/2018-8/2018	
NJ DOC-Edna Mahan Correctional Facility for Women Security System Upgrades \$71,400.00	Environmental Connection, Inc.	Asbestos and Lead Based Paint Inspections Project Design and Abatement Oversight	Project Manager Building Inspector Project Designer	8 Months	25%	6/2018-current	
Adult Diagnostic & Treatment Center Legionella Investigation \$14,000.00	Environmental Connection, Inc.	Legionella Investigation	Project Manager Building Inspector	3 Months	50%	8/2018-10/2018	
NJ Department of the Treasury, Woodbine Developmental Center \$33,550.00	Environmental Connection, Inc.	Asbestos Assessments and Reporting Project Design	Project Manager Building Inspector Project Designer	10 Months	20%	4/2018-ongoing	
NJ Department of Corrections Mountainview Youth Correctional Facility \$18,660.00	Environmental Connection, Inc.	Asbestos Containing and Lead Based Paint Inspections	Project Manager Building Inspector	6 Months	15%	4/2018-10/2018	
NJ Department of Corrections Bayside Farms Prison \$14,700.00	Environmental Connection, Inc.	ACM Investigation and Asbestos Management Plan Development	Project Manager Building Inspector Project Designer	9 Months	25%	7/2017-3/2018	

* A KEY TEAM MEMBER IS A PERSON WITH A CRITICAL ROLE IN THE PROJECT AND/OR DEVOTING 20% OR MORE OF THEIR TIME TO ANY PHASE OF THE PROJECT

KEY TEAM MEMBER PROJECT EXPERIENCE DATA SHEET

NAME Paul McEachen

TITLE Principal Senior Archaeologist

FIRM Richard Grubb & Associates, Inc.

PROJECT TITLE LOCATION AND TOTAL CONSTRUCTION COST OR FEE	A/E OF RECORD FOR THIS REFERENCED PROJECT	SPECIFIC TYPE OF WORK EXPERIENCE (STUDY, SCHEMATIC, CONSTRUCTION ADMINISTRATION)	TEAM MEMBERS SPECIFIC ROLE OR TITLE ON THE REFERENCED PROJECT	DURATION OF TEAM MEMBER'S INVOLVEMENT OF THE REFERENCED PROJECT (IN MONTHS)	% OF TIME DURING DURATION BASED UPON A 40 HOUR WEEK	DATES OF THE TEAM MEMBER'S INVOLVEMENT IN THE REFERENCED PROJECT	CLIENT NAME CONTRACT PERSON AND PHONE NUMBER
NJDOT, Folsom Maintenance Yard, Folsom, Atlantic County, NJ: \$7,863.00	Churchill Engineers (Prime to NJDPMC)	Phase IA Historical and Archaeological Survey	Principal Senior Archaeologist	3 Months	4%	2017-2018	
NJDOT, Winter Yard, Old Bridge Township, Middlesex County, NJ: \$8,480.00	Mott MacDonald (Prime to NJDPMC)	Phase IA Historical and Archaeological Survey	Principal Senior Archaeologist	1 Month	4%	2017	
Stow Creek Boat Ramp Rehabilitation, Stow Creek, Cumberland County, NJ: \$7,301.00	Thomas Barry Marine Construction, Inc. (Prime to NJDPMC)	Archaeological Monitoring	Principal Senior Archaeologist	5 Months	2%	2016-2017	
Island Beach Sanitary Sewer, Berkeley and Ocean Twp., Ocean County, NJ: \$4,989.00	LAN Associates (Prime to NJDPMC)	Phase IA Historical and Archaeological Survey	Principal Senior Archaeologist	12 Months	3%	2015-2016	
DeMott Lane Bridge, Franklin Township, Somerset County, NJ: \$15,829.00	LAN Associates (Prime to NJDPMC)	Phase IA/IB Archaeological Survey	Principal Senior Archaeologist	3 Months	4%	2013	

KEY TEAM MEMBER PROJECT EXPERIENCE DATA SHEET

NAME Allee Davis

TITLE Senior Architectural Historian

FIRM Richard Grubb & Associates, Inc.

PROJECT TITLE LOCATION AND TOTAL CONSTRUCTION COST OR FEE	A/E OF RECORD FOR THIS REFERENCED PROJECT	SPECIFIC TYPE OF WORK EXPERIENCE (STUDY, SCHEMATIC, CONSTRUCTION ADMINISTRATION)	TEAM MEMBERS SPECIFIC ROLE OR TITLE ON THE REFERENCED PROJECT	DURATION OF TEAM MEMBER'S INVOLVEMENT OF THE REFERENCED PROJECT (IN MONTHS)	% OF TIME DURING DURATION BASED UPON A 40 HOUR WEEK	DATES OF THE TEAM MEMBER'S INVOLVEMENT IN THE REFERENCED PROJECT	CLIENT NAME CONTRACT PERSON AND PHONE NUMBER
Marlboro Psychiatric Hospital, Marlboro Township, Monmouth County, NJ. \$30,007	Mott MacDonald (Prime to NJDPMC)	Historic American Buildings Survey Documentation	Architectural Historian	3 Months	25%	2014	
PANYNJ Administration Building, City of Newark, Essex County, NJ: \$7,557.00	Gannett Flemming, Inc. (Prime to PANYNJ)	Intensive-level Historic Architectural Survey	Senior Architectural Historian	4 Months	15%	2018	
Warren Street Elementary School, City of Newark, Essex County, NJ: \$9,545.00	Netta Architects (Prime to City of Newark)	Historic American Buildings Survey Documentation	Senior Architectural Historian	2 Months	10%	2018	
Building 11, Sea Girt National Guard Training Center, Monmouth County, NJ : \$4,587.00	New Jersey Department of Military and Veterans Affairs	Intensive-level Historic Architectural Survey	Senior Architectural Historian	2 Months	20%	2017	
GSP Facilities Impt, Maintenance Districts 5-8, Various Counties, NJ: \$36,548.00	T.Y. Lin International Group (Prime to NJ Turnpike Authority)	Reconnaissance-level historic architectural surveys	Architectural Historian	3 Months	20%	2016	

* A KEY TEAM MEMBER IS A TECHNICAL OR MANAGEMENT PERSON DEVOTING 20% OR MORE OF THEIR TIME TO ANY PHASE OF THE PROJECT

PROJECT APPROACH

Project Methodology

Having served as a Demolition Consultant to the DPMC for the last five (5) years, LAN is thoroughly familiar with DPMC, FEMA, and HUD project requirements. Most importantly, LAN understands the fast-paced nature of the DPMC demolition projects. LAN understands the ways in which DPMC has streamlined the scope, and how to complete the work in an efficient manner.

The result is that LAN can meet the timelines set by DPMC, which typically include a ninety (90) day requirement for the completion of site demolition. Of this time period, forty-five (45) days are typically allocated for the Design Consultant to prepare their documents and obtain permit approvals.

Upon receipt of a new work order, LAN will immediately begin the field investigation. This will include a site visit by LAN personnel to gather information about the properties. It will also include coordination with our subconsultant, Environmental Connection Inc., to have them begin the survey and sampling for suspect asbestos containing materials (ACM) right away.

Upon completion of the field investigation, LAN will prepare plans and specifications for demolition of the properties included in the work order. The plans and specifications will include site specific information gathered during the site visit, as well as information regarding the properties provided by DPMC. In addition to specifying demolition of all manmade structures on the properties, site specific concerns, such as septic systems, wells, and historic fill, will be addressed in the demolition plans and specifications. The plans and specifications will also contain requirements for backfill and grading.

Environmental Connection Inc. will prepare specifications for asbestos abatement. These specifications will include the quantities to be abated, acceptable abatement methods for each type of material, and disposal requirements. Construction requirements for the demolition and disposal of lead-based paint will also be addressed in the specifications.

Once the plans and specifications are complete, LAN will prepare a construction cost estimate for demolition, and UCC demolition permits will be requested from DPMC/DCA. If any other permits or approvals are required, these would also be obtained.

Once permits have been obtained, LAN's team will assist the DPMC with the bidding process by attending a pre-proposal meeting, responding to bidder questions, reviewing bids, and making a recommendation of award.

LAN understands that the DPMC will provide construction administration/construction management oversight on a daily basis during the construction period. However, LAN will chair a project kickoff meeting at the beginning of the demolition project. LAN will also review submittals, contractor invoices, and change order requests. LAN understands the importance of reviewing and responding to these items promptly in order to keep the fast-paced projects on schedule. LAN personnel are experienced in performing construction administration.

LAN will also prepare close-out documentation at the completion of the project.

LAN understands that underground storage tanks (UST's) will be removed prior to property acquisition. However, LAN is prequalified as an environmental consultant with two Licensed Site Remediation Professionals (LSRP's) on staff who could address unforeseen conditions should they arise. LAN also has a surveying department including Licensed Professional Land Surveyors, who are capable of performing boundary, topographic and utility surveys should the need arise.

Additionally, if historic and cultural resources screening is required and/or if artifacts are identified during construction, LAN will use the services of Richard Grubb & Associates, Inc. (RGA) as a subconsultant. RGA would conduct any necessary review and be responsible for coordination with the New Jersey Historic Preservation Office.

The Principal-In-Charge and Project Manager identified in this proposal will serve as liaison to the State. The Principal-In-Charge will also oversee work performed on this contract.

LAN's experience with the project requirements and dedicated team ensure that key project milestones can be met, and the project can proceed on schedule.

Additional information regarding the approach to be taken by our subconsultant Environmental Connection Inc. is provided on the following page.

Project Methodology

Environmental Assessment:

Environmental Connection, Inc., (EC) shall work in concert with LAN Associates, Inc. when conducting an inspection relative to any of the residential properties assigned through the State of New Jersey. EC shall perform the testing of all suspect asbestos containing materials (ACM) at the interior and exterior of the facility.

EC's inspection team shall consist of qualified and experienced individuals that maintain the following credentials to complete the project objectives:

- USEPA Accredited Asbestos Building Inspectors;
- American Board of Industrial Hygiene, Certified Industrial Hygienist;

At the completion of the assessment activities, EC shall generate a report, summarizing the survey activities performed, existing site conditions, a listing of all of the materials tested and their associated quantities. All of the assessment work performed shall be compliant with applicable regulations/guidelines. The report shall also include recommendations for the remediation of any materials identified during the course of the assessment work, so as to coincide with the demolition design as well as the design documents prepared by LAN Associates, Inc. The report shall include all sampling and analytical data that was necessary, and all appropriate personnel, firm and laboratory accreditations, certifications and licenses. A copy of the survey report shall be submitted to LAN Associates, Inc. for inclusion with its Schematic Design and/or Design Development submission.

Environmental Remediation Design:

A concise, accurate and detailed Scope of Work will be developed in strict accordance with N.J.A.C. 8:60 and 12:120 (the New Jersey Health and Labor Law, relative to asbestos abatement); USEPA and United States Department of Transportation (USDOT) requirements for the extraction, packaging, disposal/recycling, and transport of hazardous materials, and other applicable OSHA requirements; the New Jersey Public Employee Occupational Safety and Health (PEOSH) Program, including indoor air quality standards associated with construction related work; State of New Jersey, Department of Environmental Protection, (NJDEP) requirements N.J.A.C. 7:26, 7:26A and 7:26G, inclusive of identification, characterization and management of waste; DHSS

and DPMC standard operating procedures. EC will incorporate these regulatory requirements/guidelines within the Design Documents to identify specific environmental remediation methods and engineering controls, inclusive of quantities, locations, construction cost estimates and schedules, as directed.

EC shall work in concert with LAN Associates, Inc. so that environmental remediation activities compliment their design and are completed in compliance with all applicable regulations/guidelines and within specified timeframes. All design work shall be completed by a USEPA accredited AHERA/ASHA Asbestos Project Designer. EC shall prepare Technical Specification Sections for inclusion with the AOR Demolition Design Documents including, but not limited to, personal protection equipment, engineering controls, work practices, hygiene facilities and disposal.

The Technical Specification Section(s) will be developed and written in an exacting and concise manner so that it can be readily understood by all Contractors for the purpose of bid preparation. In addition, EC's extensive familiarity with the DPMC will significantly advance the project design and reduce project costs. EC will work closely with LAN Associates, Inc. and DPMC to provide requested document format and software, such as Auto CAD, Microsoft Word and Microsoft Excel to meet the DPMC's software compatibility requirements, as required. EC possesses the technology to communicate with all project participants electronically. Design documents shall be developed utilizing the Construction Specifications Institute (CSI) "Master Format," that compliments the version requested by DPMC.

The environmental remediation design shall encompass all identified issues reflected in the assessment report, where these environmental concerns will be impacted as a result of LAN Associates, Inc.'s demolition design, and reflected remediation work. EC's project approach will be that of effectively mitigating environmental issues while minimizing any delay for work to be completed by other trades, while maintaining regulatory compliance and protecting the environment of adjacent properties during the course of the remedial activities. The documents generated by EC shall also consider a cost effective approach while implementing state of the art technologies.

Upon completion of the Technical Specification Sections and, where applicable, Contract Drawings review and subsequent approval by all appropriate parties (i.e., Project AOR, DPMC, DEP, etc.), upon request, EC will be present for a pre-bid site inspection with prospective Contractors for the purpose of

explaining the aspects of the Technical Specifications in relation to existing site conditions. EC will answer any questions concerning the environmental remediation aspect of the project and will also prepare any and all bulletins and/or addenda required should site conditions or project requirements change.

In-House Quality Assurance/Quality Control (QA/QC)

All documents prepared by EC shall undergo an in-house QA/QC review by Corporate principal and/or an American Board of Industrial Hygiene (ABIH), Certified Industrial Hygienist (CIH). The QA/QC review is part of EC's Standard Operating Procedure (SOP) to ensure the Client receives documents that are concise, accurate and compliant with all applicable regulations. Analytical data prepared by any third party laboratories utilized for this project shall also be subject to an in-house QA/QC review for discrepancies and/or inaccuracies that could potentially be reported by the laboratory.



SUMMATION

Every effort has been made to address the requirements of this RFP and to present our staffing, qualifications, experience and our approach. We offer the following:

- A multi-disciplined employee-owned company with experience in most disciplines of engineering and architecture.
- Management and staff who are client-oriented with an objective to complete the project within scope, time schedule, and budget.
- A stable, qualified, diversified and highly motivated staff.

LAN is organized to accommodate small and large projects alike, tackle complex tasks successfully, and provide principal-level attention. The depth of resources provided by our team enables flexibility in project staffing and the availability of specialists to meet project requirements.

Based on our history of providing similar services to both private clients and public agencies, and the depth of our expertise, we are confident our team of professionals will contribute to the success of your project. LAN appreciates the opportunity to explain our capabilities and how they match your needs



**TC-004 TERM CONTRACT RATE SCHEDULE
BY PERSONNEL LEVEL**

NAME OF FIRM: LAN Associates, Engineering, Planning, Architecture, Surveying, Inc.

INSTRUCTIONS

Provide a **LOADED** hourly rate (\$ per hour; no cents please) below for all **Personnel** included in each of the **Levels** listed. Please refer to page 3 of these instructions for a description of each of the personnel types by level. Your proposal may be considered unresponsive if you leave blanks.

PERSONNEL TYPE/DISCIPLINE	TERM CONTRACT HOURLY RATES PER CONTRACT PERIOD		
	BASE (3 YEARS)	EXTENSION OPTION – YR 4	EXTENSION OPTION – YR 5
LEVEL 7	\$ 210	\$ 220	\$ 220
LEVEL 6	\$ 165	\$ 175	\$ 175
LEVEL 5	\$ 155	\$ 165	\$ 165
LEVEL 4	\$ 150	\$ 160	\$ 160
LEVEL 3	\$ 110	\$ 115	\$ 115
LEVEL 2	\$ 90	\$ 95	\$ 95
LEVEL 1	\$ 70	\$ 75	\$ 75
AVERAGE RATE (ALL LEVELS) Please calculate for Levels 7 -1	\$ 136	\$ 144	\$ 144

Authorized Signature: 

Steven Ramiza

Title: Vice President

RETURN THIS COMPLETED DOCUMENT TO DPMC

(PAGE 2 OF 3)

**TC - 004
DEMOLITION CONSULTANT
MULTIPLE AWARD TERM CONTRACT**

CONSULTANT AFFIDAVIT


IMPORTANT - PLEASE READ, SIGN AND PROVIDE INFORMATION REQUESTED BELOW

Affidavit: I, being duly sworn upon my oath, hereby represent and state the foregoing information contained in the Term contract Proposal and any attachments thereto the best of my knowledge are true and complete. I acknowledge that the State of New Jersey (Owner) is relying on the information contained herein and thereby acknowledge that I am under a continuing obligation from the date of this certification through the completion of any contracts with the Owner, or its contractors, to notify the Owner in writing of any changes to the answers or information contained herein. I acknowledge that I am aware that it is a criminal offense to make a false statement or misrepresentation in this certification, and if I do so, I recognize that I am subject to criminal prosecution under the law and that it will also constitute a material breach of my agreements(s) with the Owner and that the Owner, at its option, may declare any contract(s) or sub-contract(s) resulting from this certification void and unenforceable.

Signature of the Consultant below attests that the Consultant has read, understands and agrees to all terms, conditions and specifications set forth and referenced in the TC - 004 Term Contract Request for Proposal (RFP) including the General Conditions to the Demolition Consultant Term Contract TC-004 and the Statement of Assurances for Contractor/Consultant - Additional Federally Funded Agreement Provisions. Signature of the Consultant signifies that a contract is established immediately upon notice of award by the State of New Jersey for any or all of the items and the length of time indicated in the proposal. Failure to accept a contract award, to hold prices or to meet any other terms or conditions as defined in the Request for Proposal and subsequently the Notice of Award, during the term of the contract, shall constitute a breach of contract and may result in termination, suspension or debarment from further contractual agreements with the Owner.


Signature and Title of Principle or Individual of the firm authorized to sign contractual documents:

Firm Name: LAN Associates, Engineering, Planning, Architecture, Surveying, Inc.

Signature:  Print Name: Steven Ramiza

Title: Vice President Date: March 8, 2019

ATTESTED: Sworn and subscribed to before me on the 8th day of March, 2019.

Signature: 
(Notary Public-Not an Officer of the Firm)

**JOANN C VAN SPLINTER
NOTARY PUBLIC
State of New Jersey
ID #2047850**

My Commission Expires 7/19/2023

RETURN THIS COMPLETED DOCUMENT TO DPMC

(PAGE 1 OF 3)