

**OFFENDERS IN NEW JERSEY CORRECTIONAL INSTITUTIONS  
ON JANUARY 1, 2021, BY BASE OFFENSE**

In these tabulations, the base offense is the most serious offense at the time of admission. These figures reflect base or controlling offenses at admission only and do not include any offenses in addition to the base offense in the case of multiple sentences at admission. Additional sentences imposed following initial admission to the state correctional system are not included in these data.

- Violent offenses include homicide, sexual assault, aggravated and simple assault, robbery, kidnapping, other sex offenses and other person offenses (i.e. terroristic threats, coercion, larceny from a person, death by auto and negligent manslaughter). Violent offenses grouped as “Other Sex” include: Criminal Sexual Attempt, Child Pornography, Endangering the Welfare of a Child, Prostitution, and Registration Sex Offender.
- Property offenses include burglary, arson, theft, forgery, embezzlement, and receiving / possessing stolen property.
- Public policy offenses include racketeering, gambling, corruption, perjury, escape, bail jumping, juvenile and family related offenses, and conspiracy.
- Weapons offenses include weapon possession and operation.
- Drug violations include distribution, manufacture, possession, and use of drugs. Virtually all drug offenses are for sale and distribution rather than for mere possession.

**OFFENDERS IN CORRECTIONAL INSTITUTIONS BY BASE OFFENSE**

Base Offense	Total		Male Offenders in Other Facilities		Youth Complex		ADTC		Edna Mahan		*Halfway Houses, County Jails, EMHCF, St. Francis	
	#	%	#	%	#	%	#	%	#	%	#	%
TOTAL OFFENDERS	12,808	100%	9,358	100%	1,321	100%	406	100%	404	100%	1,319	100%
Violent Offenses	8,973	70%	6,964	74%	887	67%	406	100%	307	76%	409	31%
Property Offenses	559	4%	362	4%	47	4%	0	0%	25	6%	125	9%
Public Policy	313	2%	216	2%	30	2%	0	0%	10	2%	57	4%
Weapons	1,440	11%	856	9%	296	22%	0	0%	20	5%	268	20%
Drugs	1,389	11%	957	10%	61	5%	0	0%	32	8%	339	26%
Not Coded	134	1%	3	0%	0	0%	0	0%	10	2%	121	9%

- Inmates with violent offenses comprise 74% of Male Offenders in Other Facilities, 67% of the Youth Complex, 100% of ADTC, 76% of Edna Mahan, and 31% of Halfway Houses, County Jails, EMHCF, and St. Francis.
- \* Halfway Houses, Emergency Medical Home Confinement Furlough (EMHCF), County Jails, and Central Medical Unit (Saint Francis Hospital).

### Prison Complex Offenders By Base Offense

Institution	Total	Violent Offenses	Homicide	Sexual Assault	Assault	Robbery	Kidnap	Other Sex	Other Person	Property	Public Policy	Weapons	Drugs	Not Coded
<b>Bayside Main</b>	651 100%	447 69%	160 25%	41 6%	69 11%	158 24%	6 1%	11 2%	2 0%	22 3%	24 4%	88 14%	70 11%	0 0%
<b>Bayside Farm</b>	239 100%	123 51%	44 18%	0 0%	22 9%	55 23%	2 1%	0 0%	0 0%	11 5%	5 2%	38 16%	62 26%	0 0%
<b>Bayside Total</b>	890 100%	570 64%	204 23%	41 5%	91 10%	213 24%	8 1%	11 1%	2 0%	33 4%	29 3%	126 14%	132 15%	0 0%
<b>CRAF Jones Farm</b>	64 100%	6 9%	1 2%	0 0%	0 0%	3 5%	0 0%	1 2%	1 2%	22 34%	4 6%	5 8%	27 42%	0 0%
<b>CRAF Reception</b>	279 100%	136 49%	17 6%	17 6%	29 10%	47 17%	1 0%	22 8%	3 1%	38 14%	12 4%	50 18%	43 15%	0 0%
<b>CRAF Total</b>	343 100%	142 41%	18 5%	17 5%	29 8%	50 15%	1 0%	23 7%	4 1%	60 17%	16 5%	55 16%	70 20%	0 0%
<b>East Jersey Main</b>	1,103 100%	1,050 95%	699 63%	94 9%	34 3%	174 16%	42 4%	4 0%	3 0%	6 1%	6 1%	12 1%	29 3%	0 0%
<b>East Jersey Camp</b>	45 100%	29 64%	3 7%	0 0%	2 4%	22 49%	2 4%	0 0%	0 0%	0 0%	2 4%	4 9%	10 22%	0 0%
<b>East Jersey Total</b>	1,148 100%	1,079 94%	702 61%	94 8%	36 3%	196 17%	44 4%	4 0%	3 0%	6 1%	8 1%	16 1%	39 3%	0 0%

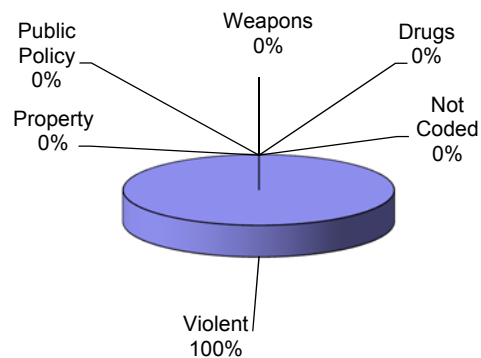
### Prison Complex Offenders By Base Offense

Institution	Total	Violent Offenses	Homicide	Sexual Assault	Assault	Robbery	Kidnap	Other Sex	Other Person	Property	Public Policy	Weapons	Drugs	Not Coded
Midstate	429 100%	228 53%	65 15%	7 2%	33 8%	115 27%	2 0%	4 1%	2 0%	25 6%	12 3%	83 19%	81 19%	0 0%
NJ State Prison	1,291 100%	1,218 94%	912 71%	78 6%	32 2%	148 11%	39 3%	6 0%	3 0%	11 1%	15 1%	18 1%	28 2%	1 0%
Northern Main	1,704 100%	1,307 77%	558 33%	93 5%	140 8%	436 26%	47 3%	26 2%	7 0%	60 4%	43 3%	145 9%	149 9%	0 0%
Northern Ad. Seg. Male	102 100%	50 49%	7 7%	3 3%	11 11%	25 25%	0 0%	3 3%	1 1%	13 13%	8 8%	15 15%	16 16%	0 0%
Northern Total	1,806 100%	1,357 75%	565 31%	96 5%	151 8%	461 26%	47 3%	29 2%	8 0%	73 4%	51 3%	160 9%	165 9%	0 0%
Southern	972 100%	436 45%	64 7%	78 8%	119 12%	110 11%	4 0%	57 6%	4 0%	85 9%	31 3%	200 21%	220 23%	0 0%
South Woods	2,479 100%	1,934 78%	658 27%	326 13%	235 9%	584 24%	51 2%	70 3%	10 0%	69 3%	54 2%	198 8%	222 9%	2 0%
<b>Subtotal Male Offenders in Other Facilities</b>	<b>9,358 100%</b>	<b>6,964 74%</b>	<b>3,188 34%</b>	<b>737 8%</b>	<b>726 8%</b>	<b>1,877 20%</b>	<b>196 2%</b>	<b>204 2%</b>	<b>36 0%</b>	<b>362 4%</b>	<b>216 2%</b>	<b>856 9%</b>	<b>957 10%</b>	<b>3 0%</b>

## Prison Complex Offenders By Base Offense

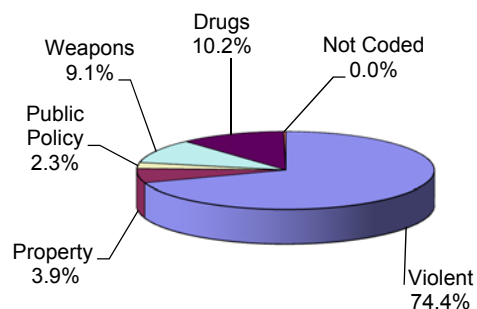
Institution	Total	Violent Offenses	Homicide	Sexual Assault	Assault	Robbery	Kidnap	Other Sex	Other Person	Property	Public Policy	Weapons	Drugs	Not Coded
ADTC	406 100%	406 100%	2 0%	323 80%	0 0%	2 0%	5 1%	71 17%	3 1%	0 0%	0 0%	0 0%	0 0%	0 0%
<b>Subtotal</b>	<b>9,764 100%</b>	<b>7,370 75%</b>	<b>3,190 33%</b>	<b>1,060 11%</b>	<b>726 7%</b>	<b>1,879 19%</b>	<b>201 2%</b>	<b>275 3%</b>	<b>39 0%</b>	<b>362 4%</b>	<b>216 2%</b>	<b>856 9%</b>	<b>957 10%</b>	<b>3 0%</b>
Mahan - Female Prison	404 100%	307 76%	170 42%	12 3%	39 10%	66 16%	8 2%	11 3%	1 0%	25 6%	10 2%	20 5%	32 8%	10 2%
<b>Total Prison Complex</b>	<b>10,168 100%</b>	<b>7,677 76%</b>	<b>3,360 33%</b>	<b>1,072 11%</b>	<b>765 8%</b>	<b>1,945 19%</b>	<b>209 2%</b>	<b>286 3%</b>	<b>40 0%</b>	<b>387 4%</b>	<b>226 2%</b>	<b>876 9%</b>	<b>989 10%</b>	<b>13 0%</b>

**ADTC**



Virtually all offenders at ADTC were committed for violent offenses.

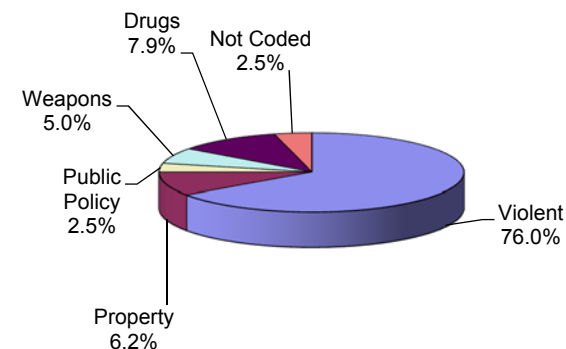
**MALE OFFENDERS IN OTHER FACILITIES**



Seventy-four percent (74.4%) of Male Offenders in Other Facilities were convicted of a violent offense.

Ten percent (10.2%) of all Male Offenders in Other Facilities were convicted of drug offenses.

**FEMALE OFFENDERS**



Violent offenses were the most frequent commitment-offenses at Edna Mahan (76.0%).

Seven percent (7.9%) of female inmates were committed for drug offenses.

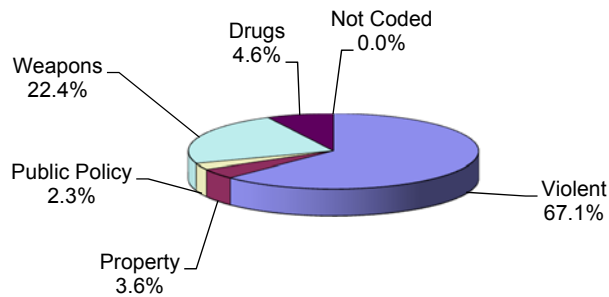
### Youth Complex Offenders By Base Offense

Institution	Total	Violent Offenses	Homicide	Sexual Assault	Assault	Robbery	Kidnap	Other Sex	Other Person	Property	Public Policy	Weapons	Drugs	Not Coded
Garden State	1,011 100%	722 71%	153 15%	24 2%	160 16%	370 37%	3 0%	9 1%	3 0%	29 3%	22 2%	198 20%	40 4%	0 0%
Mountainview	310 100%	165 53%	12 4%	17 5%	37 12%	86 28%	1 0%	12 4%	0 0%	18 6%	8 3%	98 32%	21 7%	0 0%
<b>Total Youth Complex</b>	<b>1,321</b> <b>100%</b>	<b>887</b> <b>67%</b>	<b>165</b> <b>12%</b>	<b>41</b> <b>3%</b>	<b>197</b> <b>15%</b>	<b>456</b> <b>35%</b>	<b>4</b> <b>0%</b>	<b>21</b> <b>2%</b>	<b>3</b> <b>0%</b>	<b>47</b> <b>4%</b>	<b>30</b> <b>2%</b>	<b>296</b> <b>22%</b>	<b>61</b> <b>5%</b>	<b>0</b> <b>0%</b>

### Offenders In Halfway Houses, County Jails, EMHCF, and St. Francis By Base Offense

Institution	Total	Violent Offenses	Homicide	Sexual Assault	Assault	Robbery	Kidnap	Other Sex	Other Person	Property	Public Policy	Weapons	Drugs	Not Coded
Central Medical Unit	2	1	0	0	1	0	0	0	0	0	0	0	1	0
	100%	50%	0%	0%	50%	0%	0%	0%	0%	0%	0%	0%	50%	0%
County Jail	753	286	32	38	80	78	1	50	7	82	30	96	138	121
	100%	38%	4%	5%	11%	10%	0%	7%	1%	11%	4%	13%	18%	16%
EMHCF	16	0	0	0	0	0	0	0	0	4	1	2	9	0
	100%	0%	0%	0%	0%	0%	0%	0%	0%	25%	6%	13%	56%	0%
Halfway House	548	122	32	0	27	59	1	0	3	39	26	170	191	0
	100%	22%	6%	0%	5%	11%	0%	0%	1%	7%	5%	31%	35%	0%
<b>Total Halfway Houses, County Jails, EMHCF, St. Francis</b>	<b>1,319</b>	<b>409</b>	<b>64</b>	<b>38</b>	<b>108</b>	<b>137</b>	<b>2</b>	<b>50</b>	<b>10</b>	<b>125</b>	<b>57</b>	<b>268</b>	<b>339</b>	<b>121</b>
	<b>100%</b>	<b>31%</b>	<b>5%</b>	<b>3%</b>	<b>8%</b>	<b>10%</b>	<b>0%</b>	<b>4%</b>	<b>1%</b>	<b>9%</b>	<b>4%</b>	<b>20%</b>	<b>26%</b>	<b>9%</b>

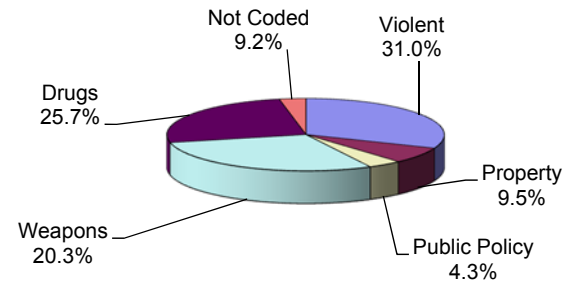
#### YOUTH COMPLEX



Sixty-seven percent (67.1%) of offenders housed in the youth complex were incarcerated for violent offenses.

Twenty-two percent (22.4%) of offenders housed in the youth complex were incarcerated for weapons offenses and 4.6% for drug offenses.

#### HALWAY HOUSES, COUNTY JAILS, EMHCF, ST. FRANCIS



Offenders housed in county jails, halfway houses, EMHCF, and St. Francis are less serious offenders than the Male Offenders in Other Facilities (i.e. 31.0% violent offenders vs. 74.4% Male Offenders in Other Facilities with violent offenses).

Twenty-five percent (25.7%) of offenders housed in Halfway Houses, County Jails, EMHCF, and St. Francis were committed for drug offenses.