



State of New Jersey
Department of Community Affairs
Division of Fire Safety

FIRE IN NEW JERSEY 2001 TO 2003

people. places. progress.



NEW JERSEY DEPARTMENT OF
COMMUNITY AFFAIRS
Programs Book



DEDICATION

This report is dedicated to the memory of the following firefighters who gave their lives while protecting the citizens of their communities.



James Heenan
Verga Fire and Rescue Company
2001

Alberto Tirado
Passaic Fire Department
2001

Lawrence Webb
Newark Fire Department
2001

Willie Barns
Country Lakes Volunteer Fire Company #1
2001

George F. Danielson, Jr.
Mine Hill Fire Department
2001

George Batelli
Garfield Fire Department
2002

Robert Feeney
Long Branch Fire Department
2002

Thomas G. Stewart III
Gloucester City Fire Department
2002

James E. Sylvester
Mt. Ephraim Fire Department
2002

John D. West
Mt. Ephraim Fire Department
2002

Woodrow Pinkerton
Union Fire Company, Station 251
2003

Roy Prouty
Country Lakes Fire Company
2003

George Petrosky
Matawan Borough Fire Department
2003

Ronald W. Fitzpatrick
Long Branch Fire Department
2003





Fire in New Jersey 2001 to 2003

Division of Fire Safety

Lawrence Petrillo, State Fire Marshal/Director
William Kramer, Deputy State Fire Marshal/Deputy Director

Prepared By:

Heather Puskar, Supervisor
Fire Incident Reporting Unit

For Further Information Contact:

Division of Fire Safety
P.O. Box 809
Trenton, N.J. 08625
(609) 633-6145





Table of Contents

Introduction	9
NFIRS Background	9
Uses of NFIRS	10
Fire Incident Reporting in New Jersey	10
Fire Department Responses	13
Incident Types	13
Fires by Type	15
Structure Fires by Property Type	16
Residential Property Use Fires	18
Areas of Fire Origin	20
Residential Properties	20
Heat Sources	23
Vehicle Fires	24
Cause of Ignition	26
Detector Performance	28
Civilian Fire Casualties	29
Cause of Injuries	29
Cause of Fatalities	29
Age Group	31
Detector Performance	31
Fire Service Casualties	32
Activity at Time of Injury	32
Cause of Casualties	33
Firefighter Fatalities	35
Thermal Imaging Camera Special Study	38
Reporting Fire Departments	39





Introduction

FIRE IN NEW JERSEY 2001-2003 summarizes the last three years of fire incident data in New Jersey as reported by fire departments that participate in the National Fire Incident Reporting System (NFIRS). The data presented in this report reflect the pain and sacrifice experienced by the victims of fire, the loss of jobs, and the destruction in our communities where the fires occurred. The purpose of this report is to raise our awareness of the impact that fire has on our state. Once the problems are identified steps can be taken to solve them. In addition to describing the fire problem, the data in this report show that fire department personnel respond to a wide range of emergencies. In many communities throughout the state, fire departments are first responders to emergency medical calls, motor vehicle and industrial accidents, hazardous materials incidents, and other potential life threatening emergencies.

Firefighters and fire officers, both career and volunteer, are responsible for the data in this report. They are the ones who complete the necessary reports documenting the incidents to which their fire department responds. The Division of Fire Safety is grateful to these dedicated individuals.

The Fire Incident Reporting Unit Staff should be acknowledged for their work in processing the incident data, assisting fire departments with technical support, and fire department training.

NFIRS Background

The Federal Fire Prevention and Control Act of 1974 (P.L. 93-948) authorized the National Fire Data Center in the United States Fire Administration (USFA) to gather and analyze information on the frequency, causes, spread, and extinguishment of fires; on the number, nature and causes of injuries and deaths resulting from fires and on property loss. The National Fire Information Council (NFIC) was organized to promote and manage the data collection effort through a cooperative agreement with the USFA. The NFIC is made up of representatives of participating states and metropolitan cities as well as individuals and organizations who support the NFIRS. In New Jersey, the Division of Fire Safety in the Department of Community Affairs has the responsibility for coordinating the data collection effort and is the representative to the NFIC.



Uses of NFIRS Data

The NFIRS data are useful in helping fire departments assess their fire prevention efforts, improve their training and education, and assist with the justification of budget requests. Fire departments have been able to secure funding to offset the cost of apparatus using the NFIRS by identifying where fires occurred in their jurisdictions.

States can use the data to justify changes to the fire prevention code, identify firefighter training needs, and provide information for public fire education programs. The data can be analyzed to identify trends that are not apparent at the local fire department level.

In addition to providing an excellent source of data to evaluate the fire problem on the local and state level, data from the NFIRS are used extensively at the federal level. The USFA uses the data to set program priorities and target fire prevention campaigns. The Consumer Products Safety Commission (CPSC) uses the data to identify possible product defects. Some examples of areas that have been targeted for special studies by the CPSC are products such as portable space heaters, wood stoves, upholstered furniture and cigarette lighters.

Fire Incident Reporting in New Jersey

The data used in this report were provided by fire departments that participate in the NFIRS. The statutes that created the Division of Fire Safety (formerly the Bureau of Fire Safety) call for the Division to administer a fire incident reporting system. To encourage participation, the Division of Fire Safety provides training, reference materials, incident field notes, and software to fire departments. The incident data that fire departments submit to the Division are forwarded to the National Fire Data Center at the United States Fire Administration.

The Division of Fire Safety began implementation of NFIRS 5.0 in 1999 and most of the data used in this report is from NFIRS 5.0. This version of the NFIRS is an all-incident based reporting system that better and more accurately describes the types of incidents to which fire departments respond. NFIRS 5.0 enables fire departments to accurately report how fires started, including the involvement of juveniles. The system includes an optional arson module, which can be used with law enforcement reports to better identify intentionally set fires. NFIRS 5.0 includes optional modules that enable fire departments to document their response to EMS, hazardous materials, and wildland fire incidents. Optional modules are included, which allow documentation of all apparatus and personnel that respond to incidents. The Division encourages fire departments to take full advantage of NFIRS 5.0 and to complete all appropriate modules depending on the incident.



Fires in New Jersey continue to kill and injure residents in the state. These fires also result in the destruction of property, the loss of jobs, and the loss of revenue. The men and women who make up New Jersey's fire departments are also at risk when they respond to these incidents. Unfortunately many victims of fire suffer because of someone else's careless attitude toward fire. This report identifies and analyzes the causes of fire in our state. Its purpose is to raise the awareness of our constituents and elected officials to the dangers of fire. The statistics used in this report come from the fire departments in New Jersey that participate in the National Fire Incident Reporting System (NFIRS).

Contact Information

NFIRS Staff is available to assist fire departments with NFIRS training and technical support. Please feel free to contact your NFIRS Field Representative.

Heather Puskar, *Supervisor*
609 633-6145
hpuskar@dca.state.nj.us

Ronald Svrcek, *Field Representative*
609 943-5852
rsvrcek@dca.state.nj.us

Ron serves fire departments in Bergen, Essex, Hudson, Middlesex, Morris, Passaic, Somerset, Sussex, Union, and Warren County.

Steven Hearn, *Field Representative*
609 984-6958
shearn@dca.state.nj.us

Steve serves fire departments in Atlantic, Burlington, Camden, Cape May, Cumberland, Gloucester, Hunterdon, Mercer, Monmouth, Ocean, and Salem County.

Fred Connin, *Field Representative*
609 943-5851
fconnin@dca.state.nj.us

Fred serves fire departments Statewide.



Report Contents

The data presented in this report is representative of all the incident data that has been submitted to the Division of Fire Safety's NFIRS Unit. At the end of this report is a breakdown by county, showing the individual fire departments that submitted data and the fire departments that did not.

Data submission response ratio is broken down as follows:

- 2001** Out of **754** fire departments, **586** submitted data, equalling **78%**.
Note: **48** fire departments (**7%** of **78%**) submitted less than six months of data.
- 2002** Out of **755** fire departments, **594** submitted data, equalling **79%**.
Note: **72** fire departments (**10%** of **79%**) submitted less than six months of data.
- 2003** Out of **749** fire departments, **576** submitted data, equalling **77%**.
Note: **61** fire departments (**8%** of **77%**) submitted less than six months of data.

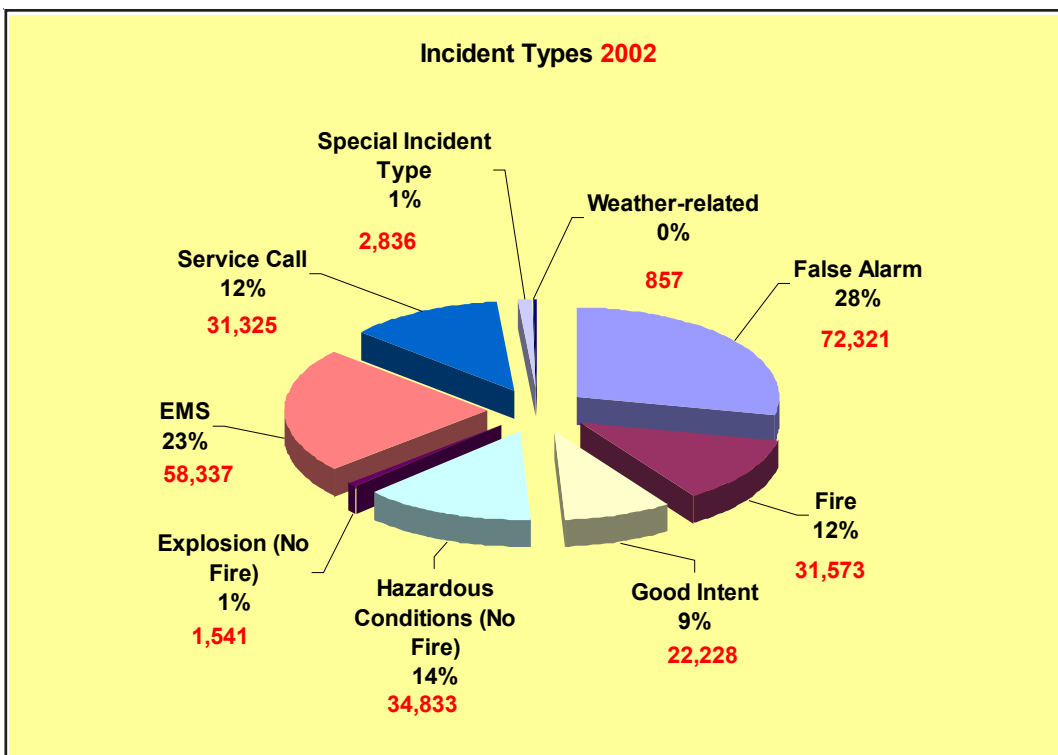
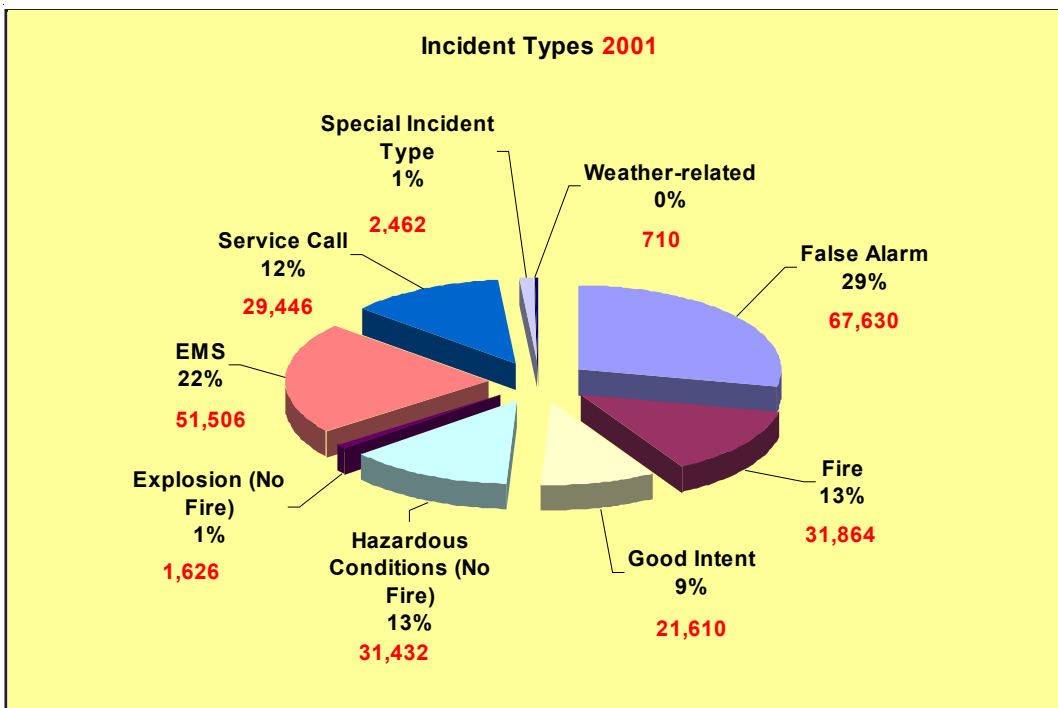
The number of fire departments in the state has changed each year, due to the addition of a fire department to the reporting system (Meadowlands FD, Bergen County) and several individual fire departments merging into one (Winslow FD, Camden County).

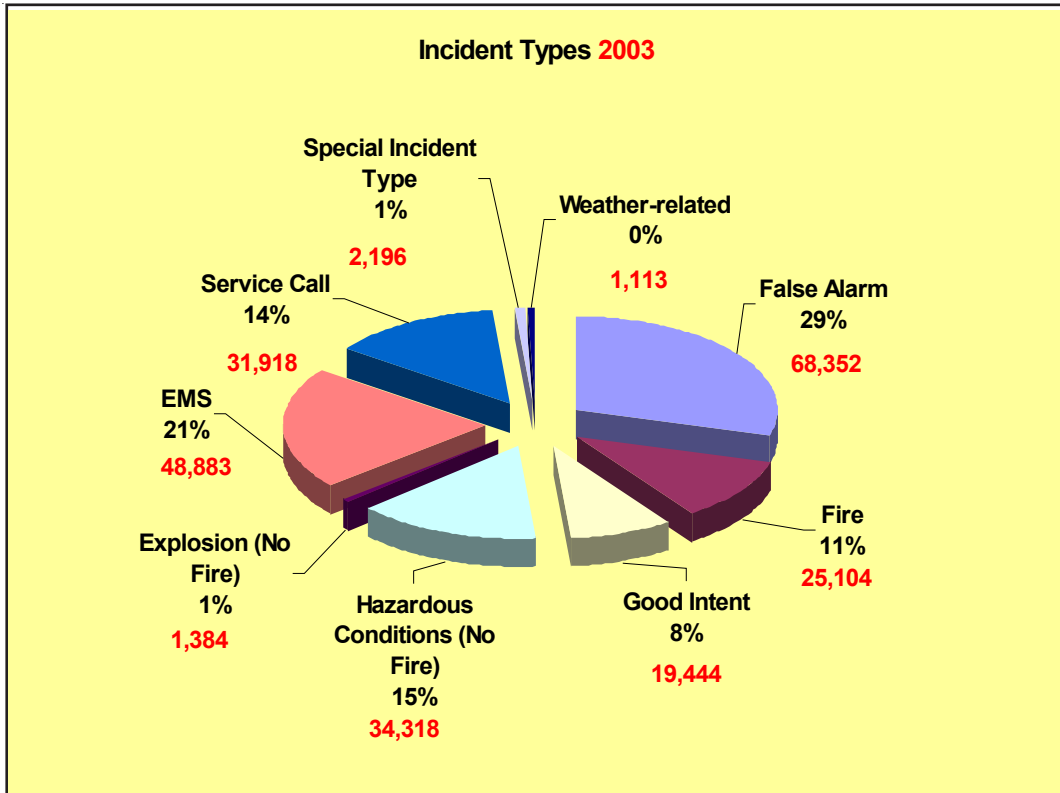
Note: Data does not include Military Installation Fire Department data, with the exception of the U.S. Coast Guard Fire Department. Military Fire Departments report to the Department of Defense. The U.S. Coast Guard Fire Department will begin reporting to the D.O.D. in January 2005.



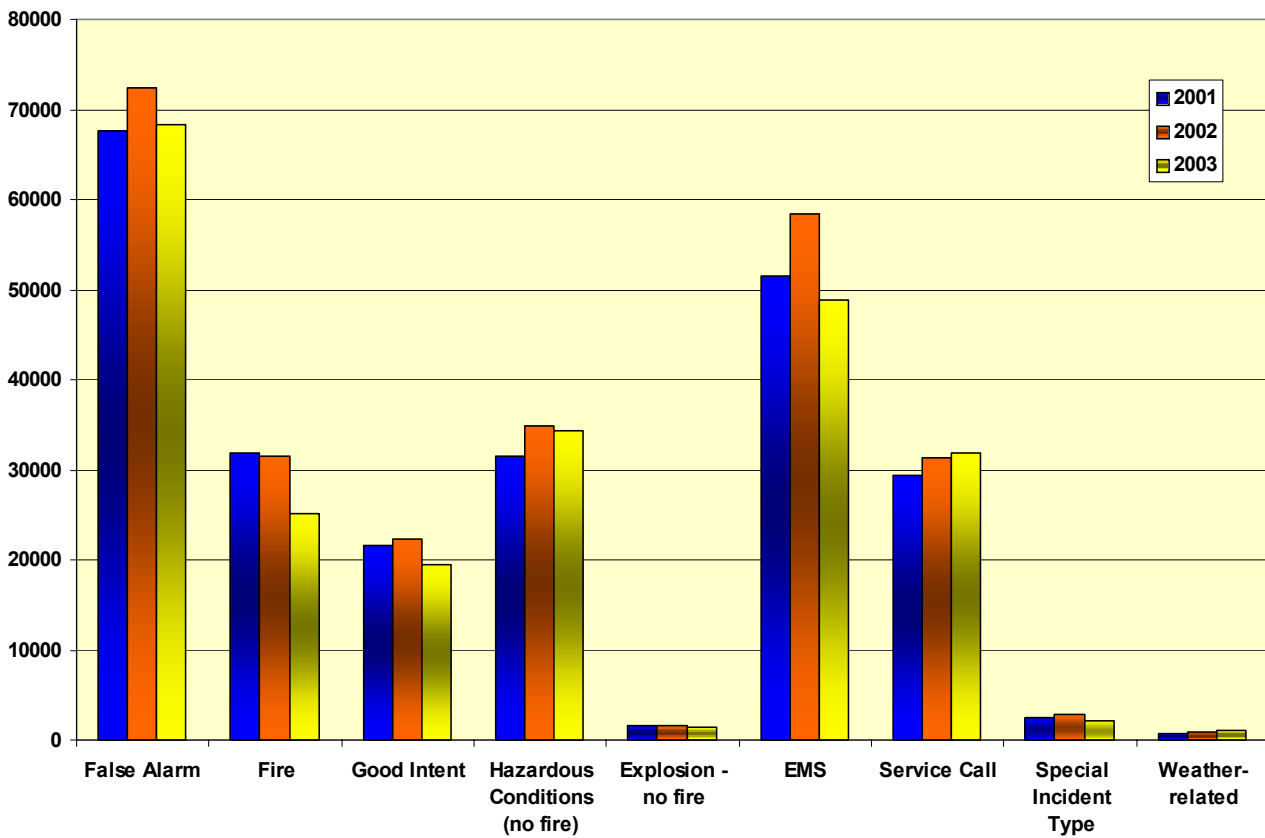
Fire Department Responses

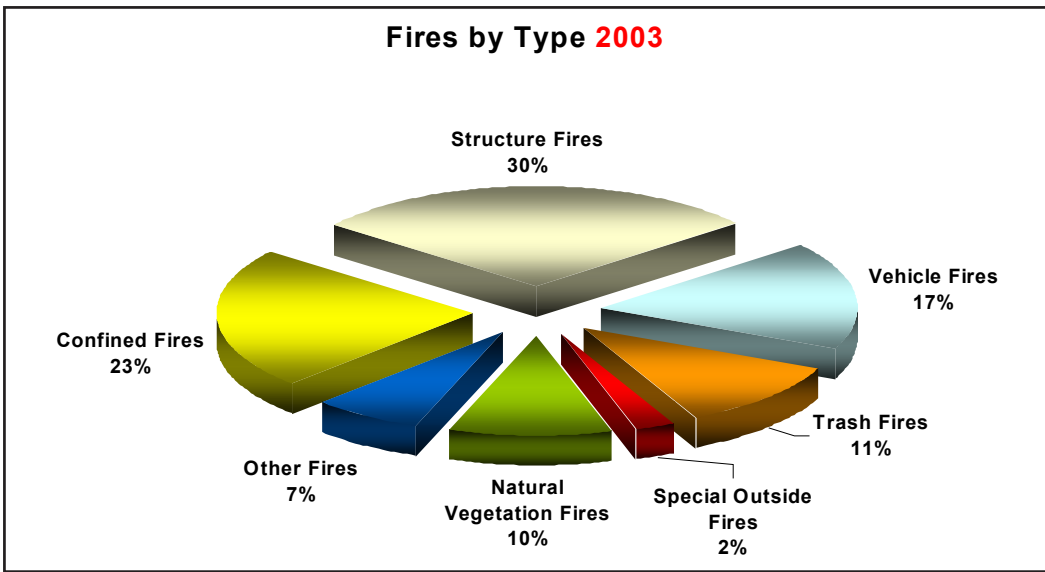
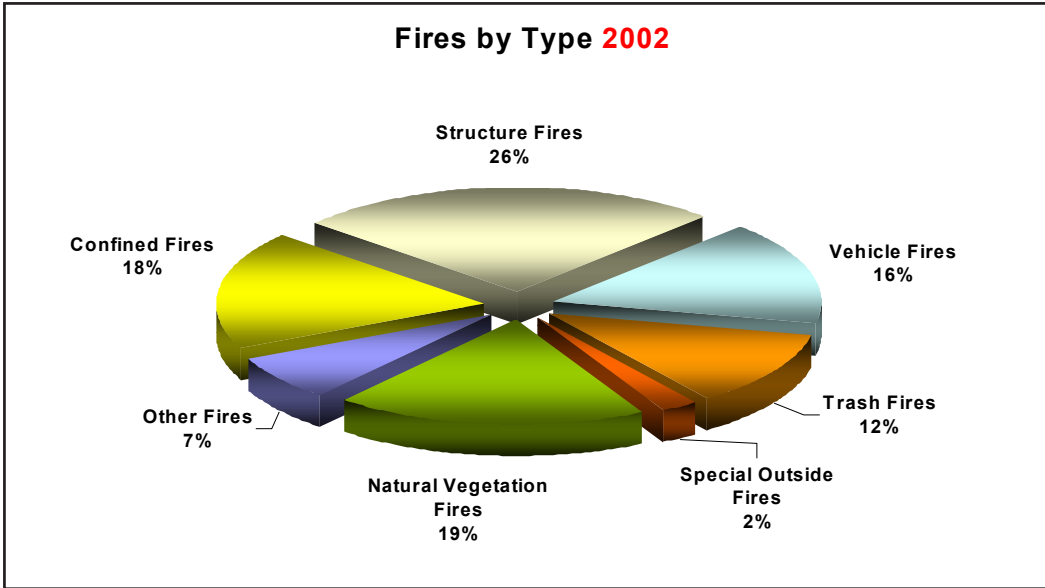
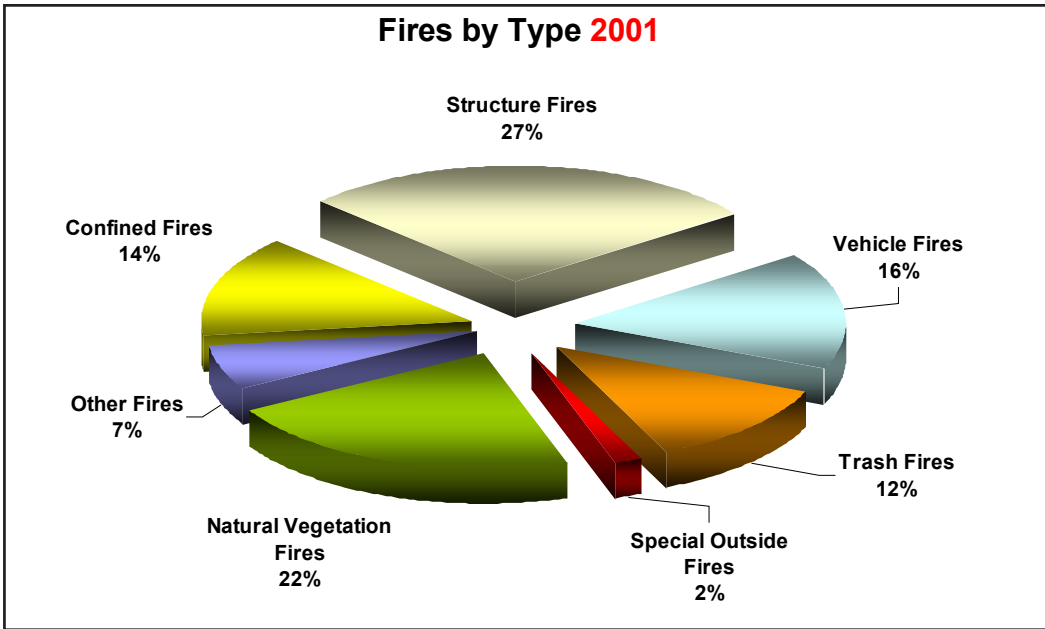
The following tables represent the number of incidents that fire departments responded to in 2001, 2002, and 2003.





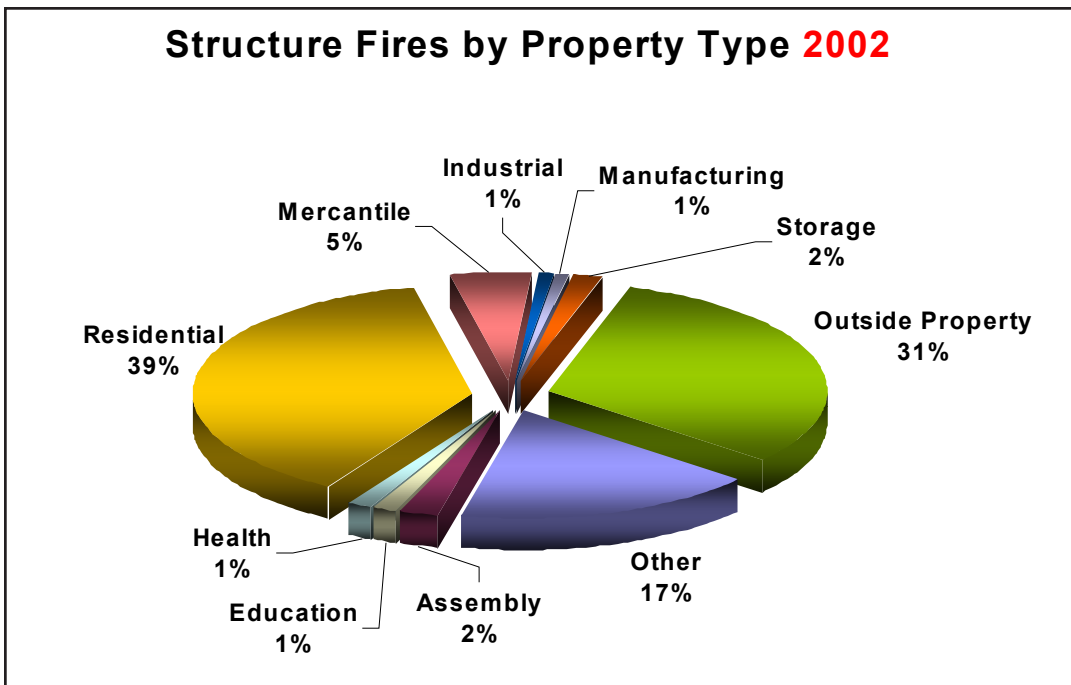
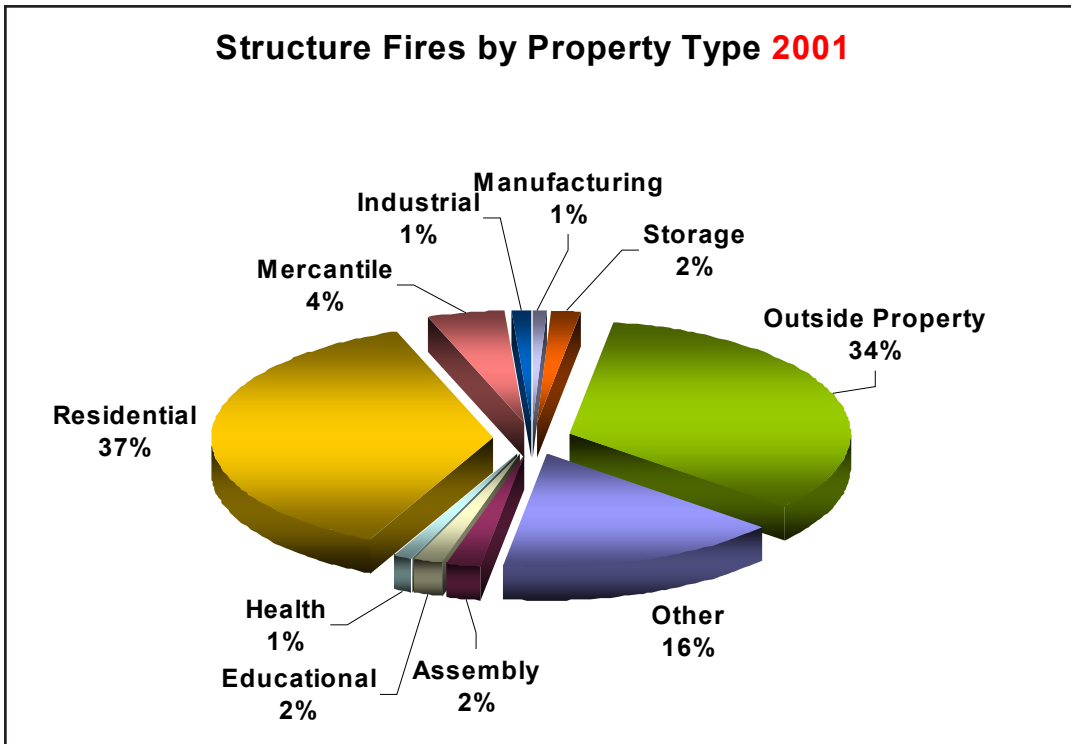
Incident Types 2001 to 2003





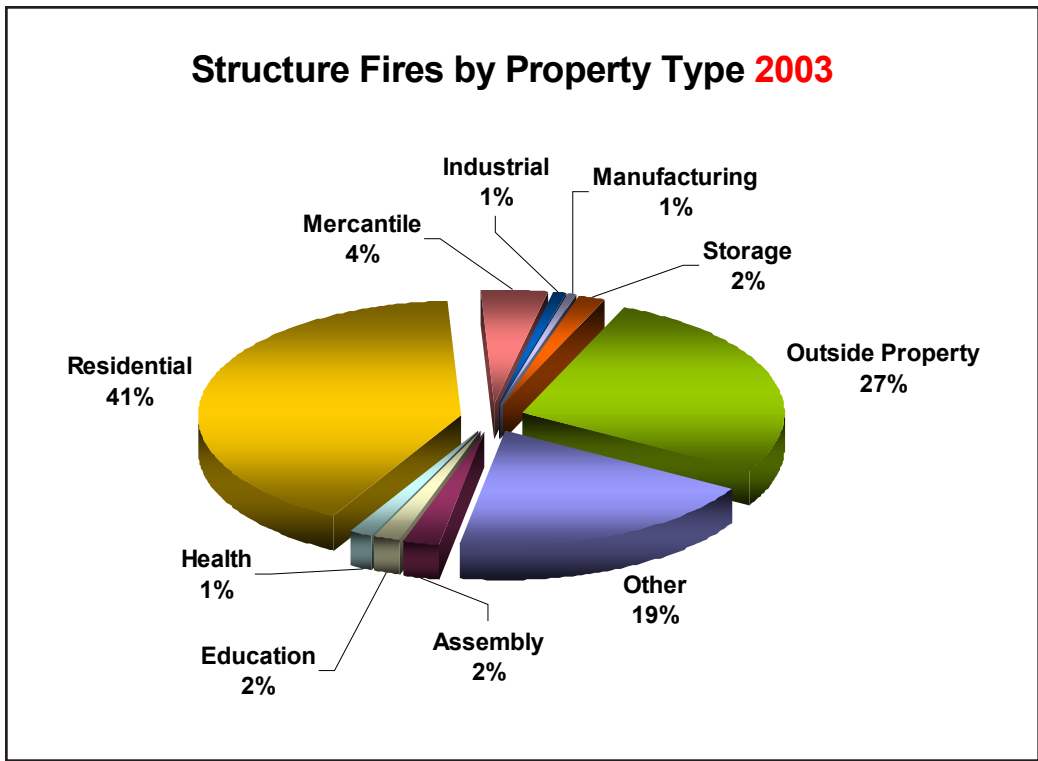


Figures show frequency of structure fires by property type.

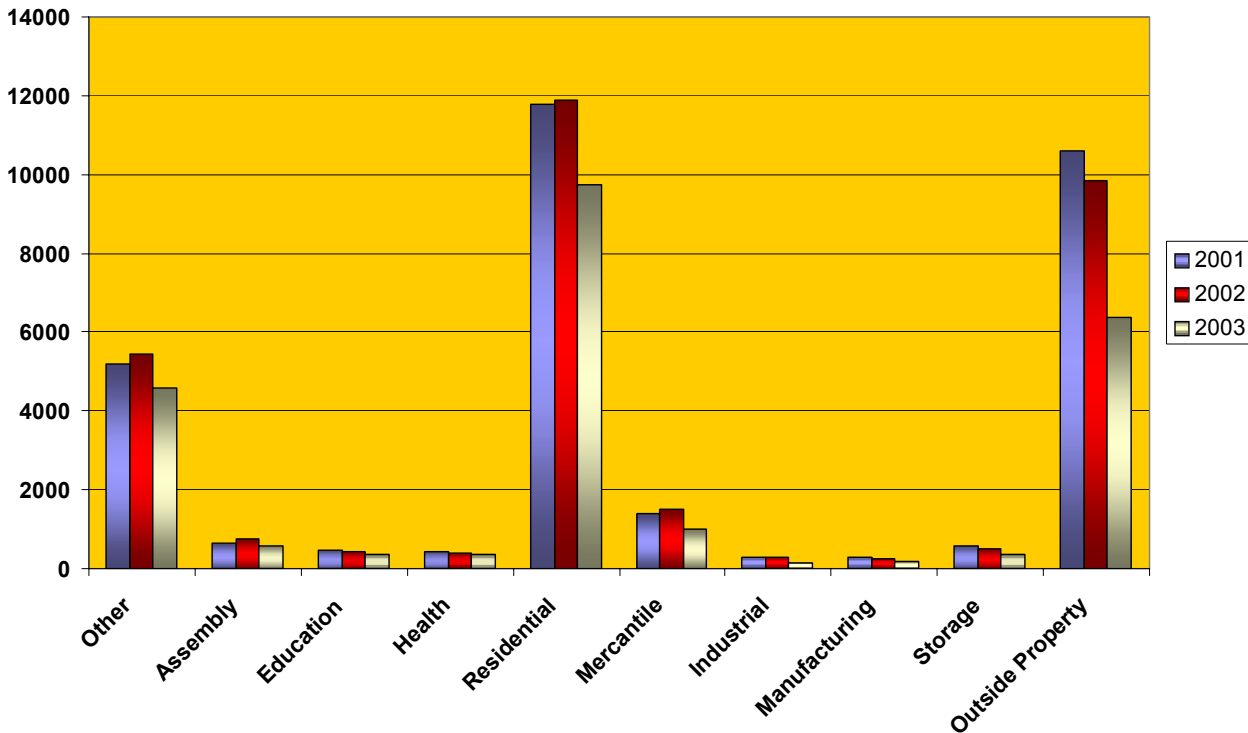




Structure Fires by Property Type 2003



Structure Fires by Property Type 2001 to 2003

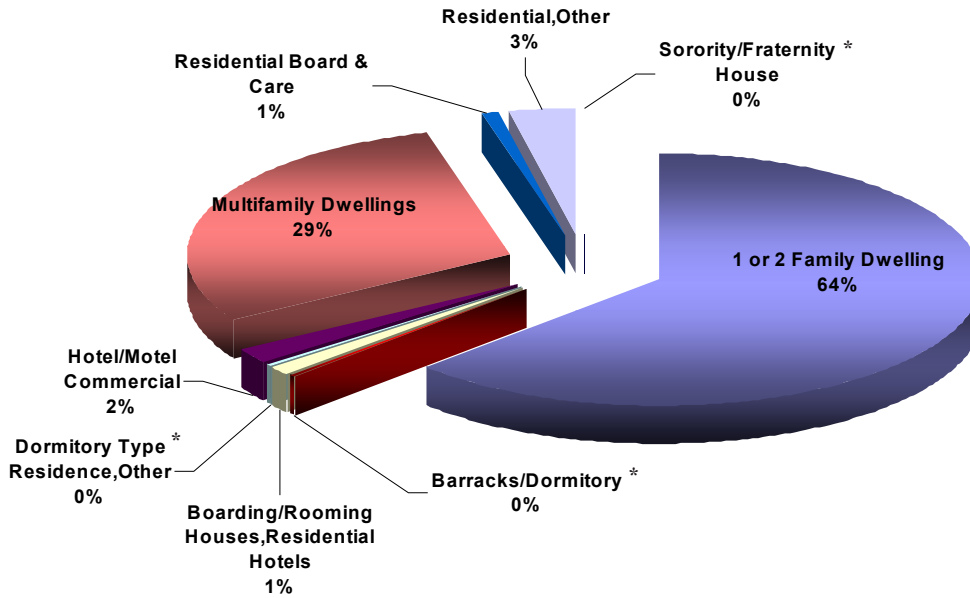




Residential Property Use Fires

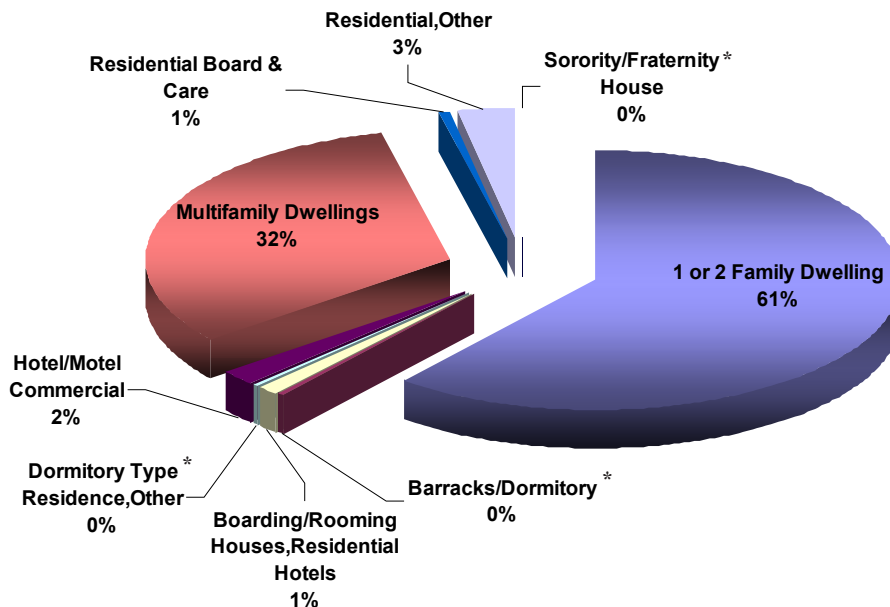
Figures show the frequency of fires in residential property uses.

Fires in Residential Property Uses 2001

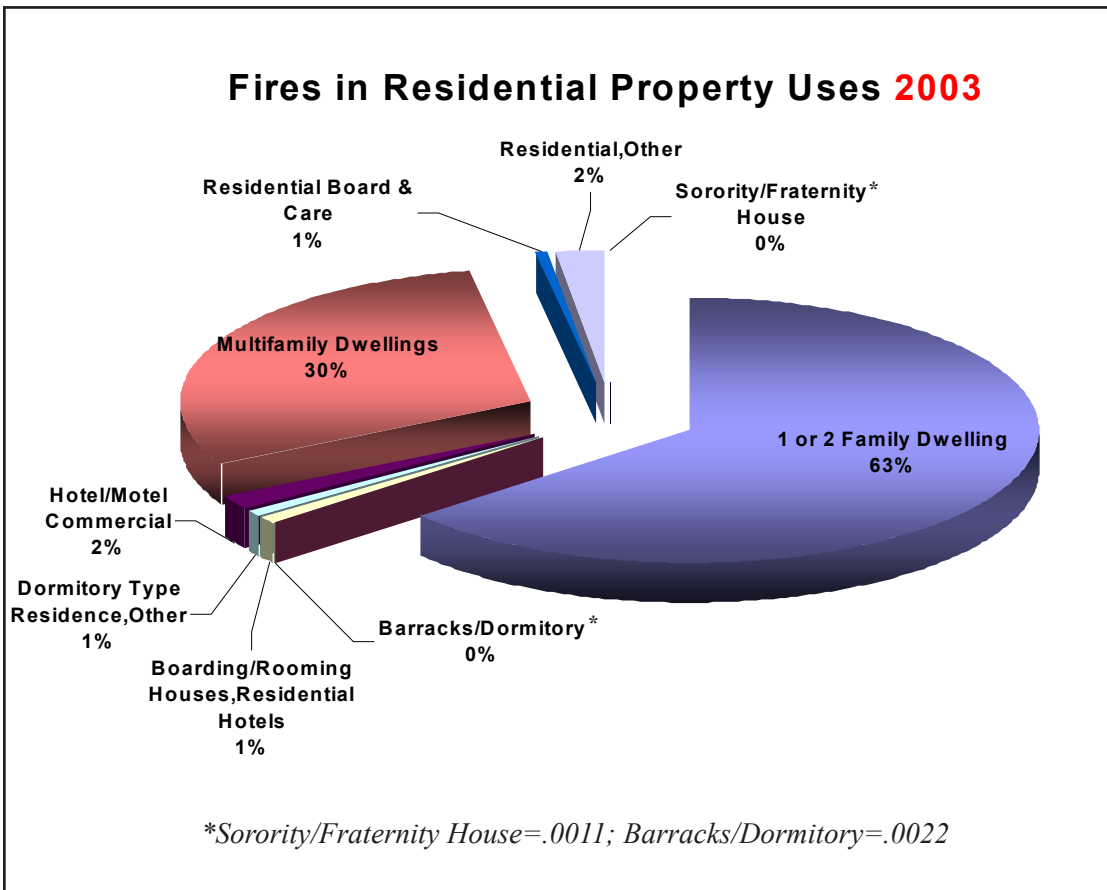


*Sorority/Fraternity House=.0002; Barracks/Dormitory=.0028; Dormitory Type Res., Other=.0047

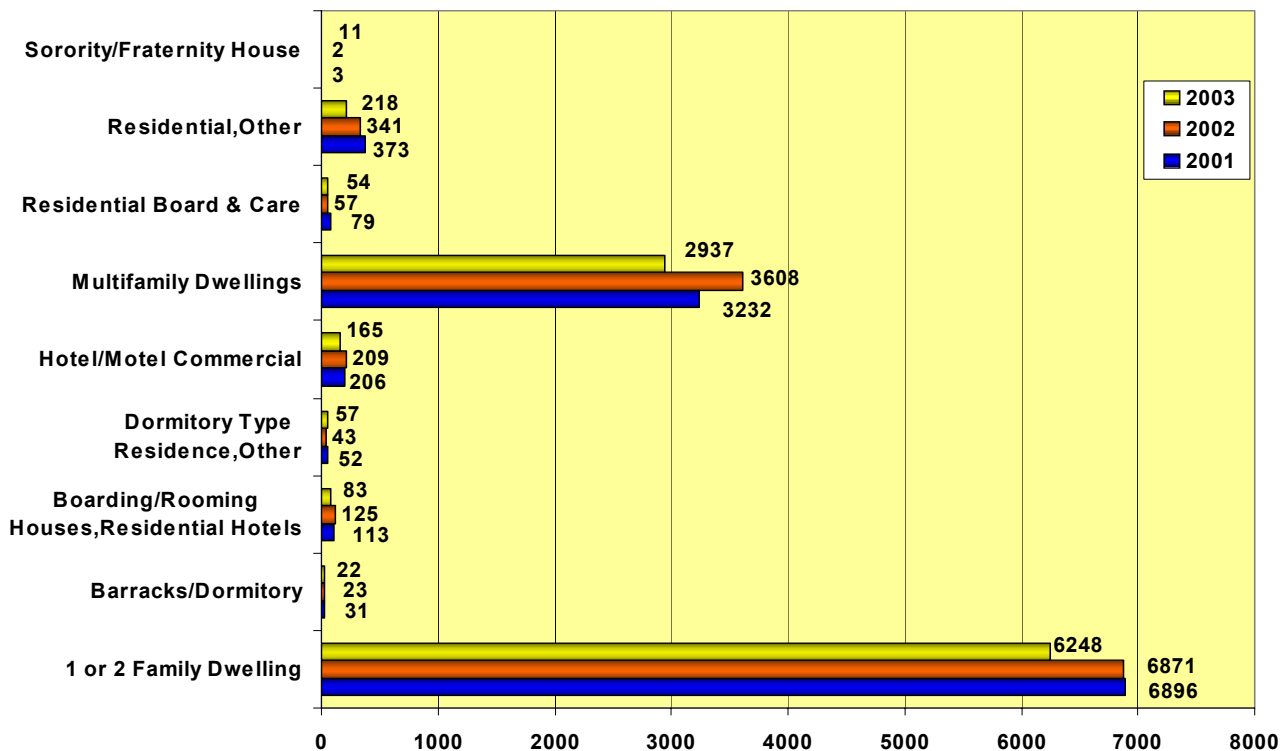
Fires in Residential Property Uses 2002



*Sorority/Fraternity House=.0001; Barracks/Dormitory=.0020; Dormitory Type Res., Other=.0038

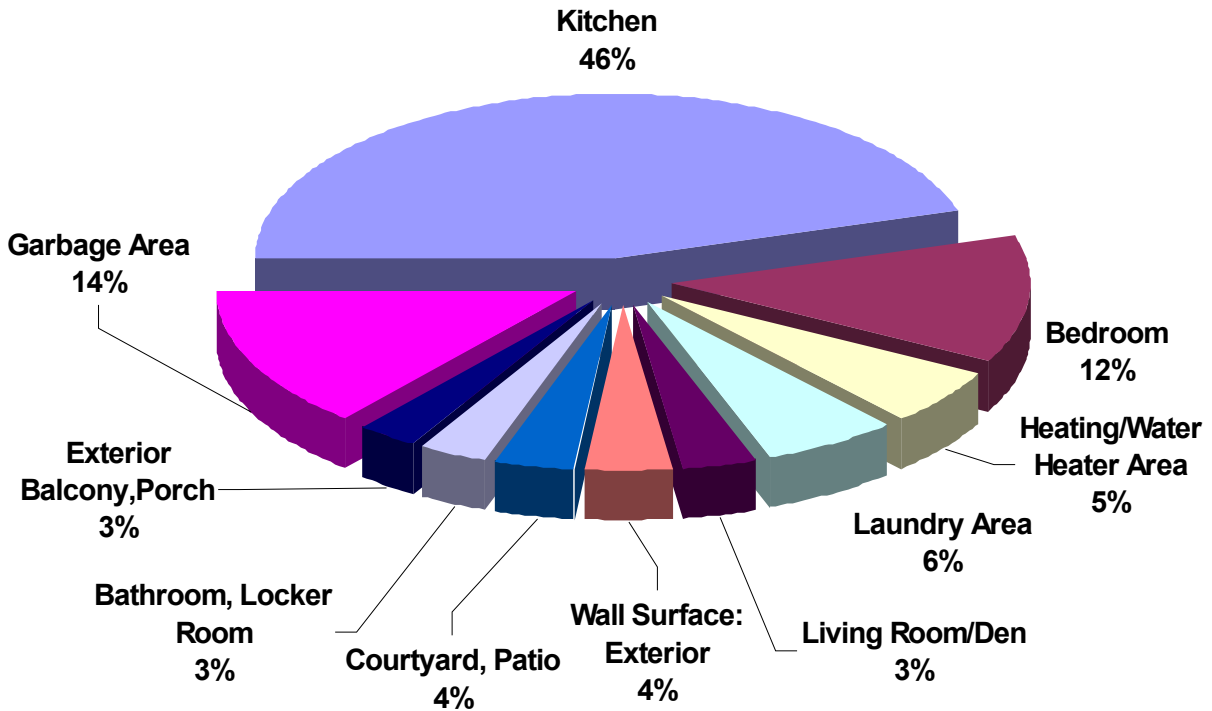


Fires in Residential Property Uses 2001 to 2003





Top Ten Areas of Fire Origin in Residential Properties 2001



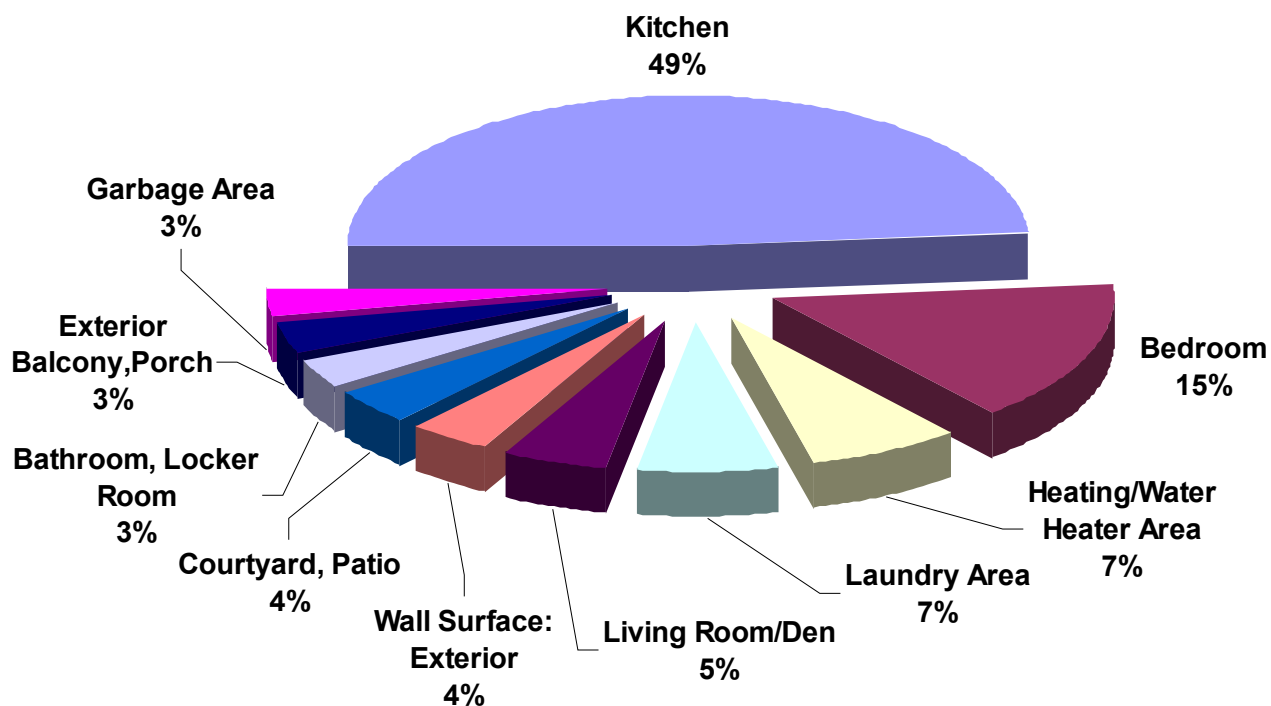
Photograph by Heather Puskar

Area of Fire Origin - 2001	Total #	Property Loss	Contents Loss
Cooking area, kitchen	1992	\$2,949,790.00	\$640,981.00
Chute/container - trash, rubbish, waste	610	\$1,356.00	\$0.00
* Bedroom - < 5 people; included are jail or prison	547	\$4,179,479.00	\$1,055,736.00
Laundry area, wash house (laundry)	275	\$547,436.00	\$65,650.00
Heating room or area, water heater area	238	\$598,672.00	\$93,800.00
Wall surface: exterior	165	\$161,849,532.00	\$220,700.00
Courtyard, patio, porch, terrace	163	\$98,352.00	\$27,211.00
Common room, den, family room, living room, lounge	146	\$2,422,270.00	\$457,575.00
Bathroom, checkroom, lavatory, locker room	137	\$445,431.00	\$188,800.00
Exterior balcony, unenclosed porch	121	\$590,901.00	\$84,300.00
	4394	\$173,683,219.00	\$2,834,753.00

* Bedroom for less than five people. Includes jail cells, patient rooms, sleeping areas.



Top Ten Areas of Fire Origin in Residential Properties 2002



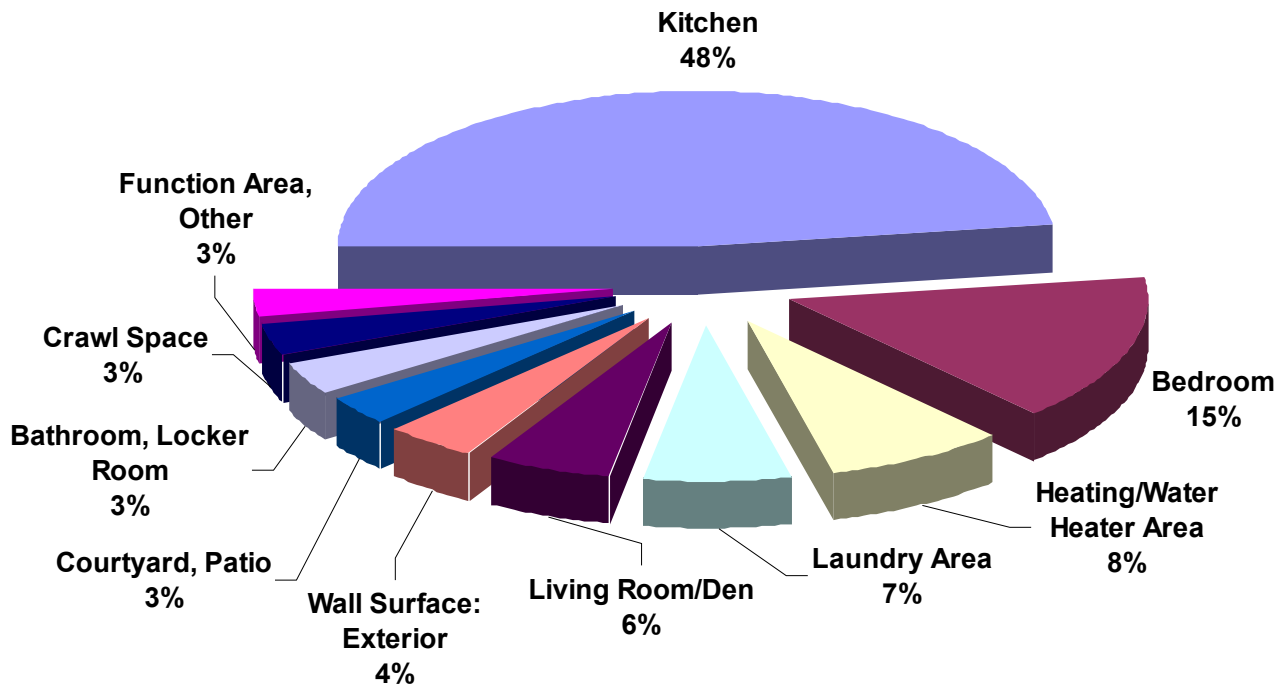
Photograph by Heather Puskar

Area of Fire Origin - 2002	Total #	Property Loss	Contents Loss
Cooking area, kitchen	1778	\$612,268,051.00	\$844,518.00
* Bedroom - < 5 people; included are jail or prison	555	\$4,390,867.00	\$991,999.00
Heating room or area, water heater area	260	\$1,413,383.00	\$541,251.00
Laundry area, wash house (laundry)	249	\$331,973.00	\$152,572.00
Common room, den, family room, living room, lounge	181	\$2,808,043.00	\$966,348.00
Function area, Other	148	\$800,000.00	\$318,980.00
Courtyard, patio, porch, terrace	148	\$84,645.00	\$36,525.00
Wall surface: exterior	137	\$961,865.00	\$105,751.00
Exterior balcony, unenclosed porch	118	\$755,762.00	\$233,520.00
Chute/container - trash, rubbish, waste	115	\$19,480.00	\$0.00
	3689	\$623,834,069.00	\$4,191,464.00

* Bedroom for less than five people. Includes jail cells, patient rooms, sleeping areas.



Top Ten Areas of Fire Origin in Residential Properties 2003



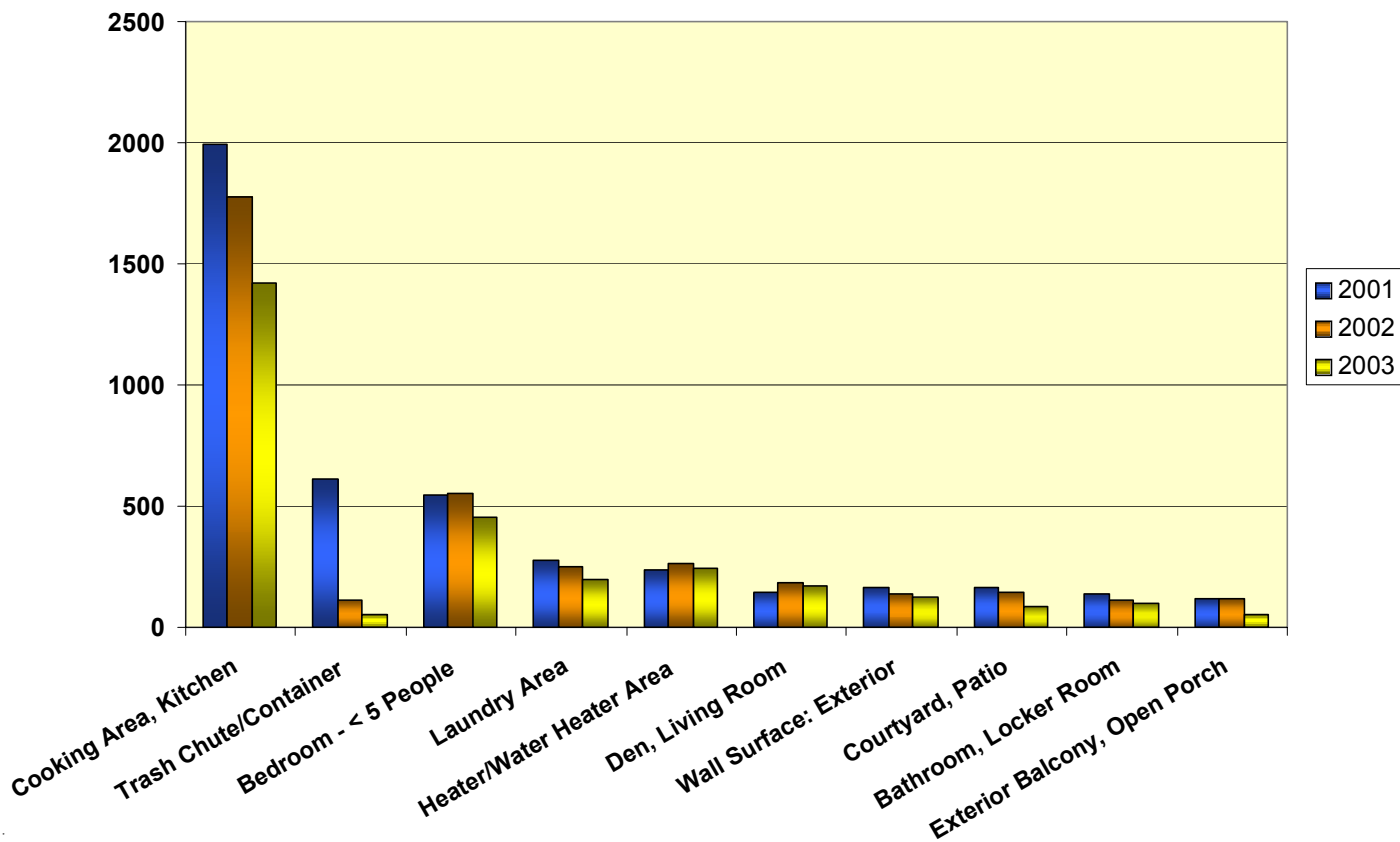
Photograph courtesy of Paul Allen

Area of Fire Origin - 2003	Total #	Property Loss	Contents Loss
Cooking area, kitchen	1423	\$2,095,415.00	\$766,373.00
* Bedroom - < 5 people; included are jail or prison	454	\$3,924,401.00	\$805,261.00
Heating room or area, water heater area	242	\$844,055.00	\$406,200.00
Laundry area, wash house (laundry)	196	\$474,580.00	\$522,240.00
Common room, den, family room, living room, lounge	168	\$2,244,500.00	\$851,870.00
Wall surface: exterior	124	\$167,850.00	\$11,000.00
Substructure area or space, crawl space	99	\$1,331,701.00	\$168,600.00
Bathroom, checkroom, lavatory, locker room	97	\$1,957,855.00	\$386,728.00
Courtyard, patio, porch, terrace	88	\$311,861.00	\$50,220.00
Function area, Other	85	\$736,000.00	\$144,100.00
	2976	\$14,088,218.00	\$4,112,592.00

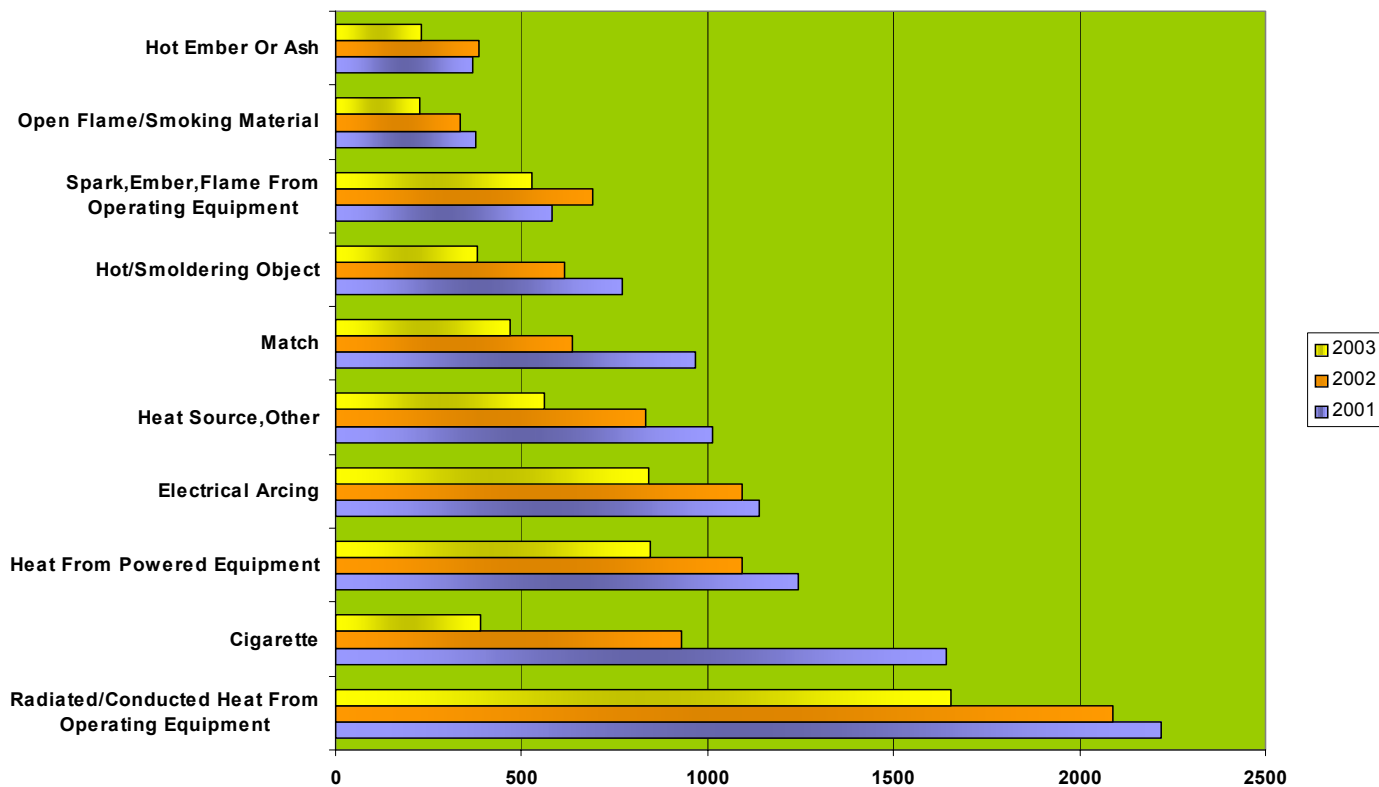
* Bedroom for less than five people. Includes jail cells, patient rooms, sleeping areas.



Top Ten Areas of Fire Origin in Residential Properties 2001-2003



Top Ten Heat Sources 2001 to 2003 *



*Represents all reported fires.



Vehicle Fires

Top ten areas of fire origin in vehicle fires.

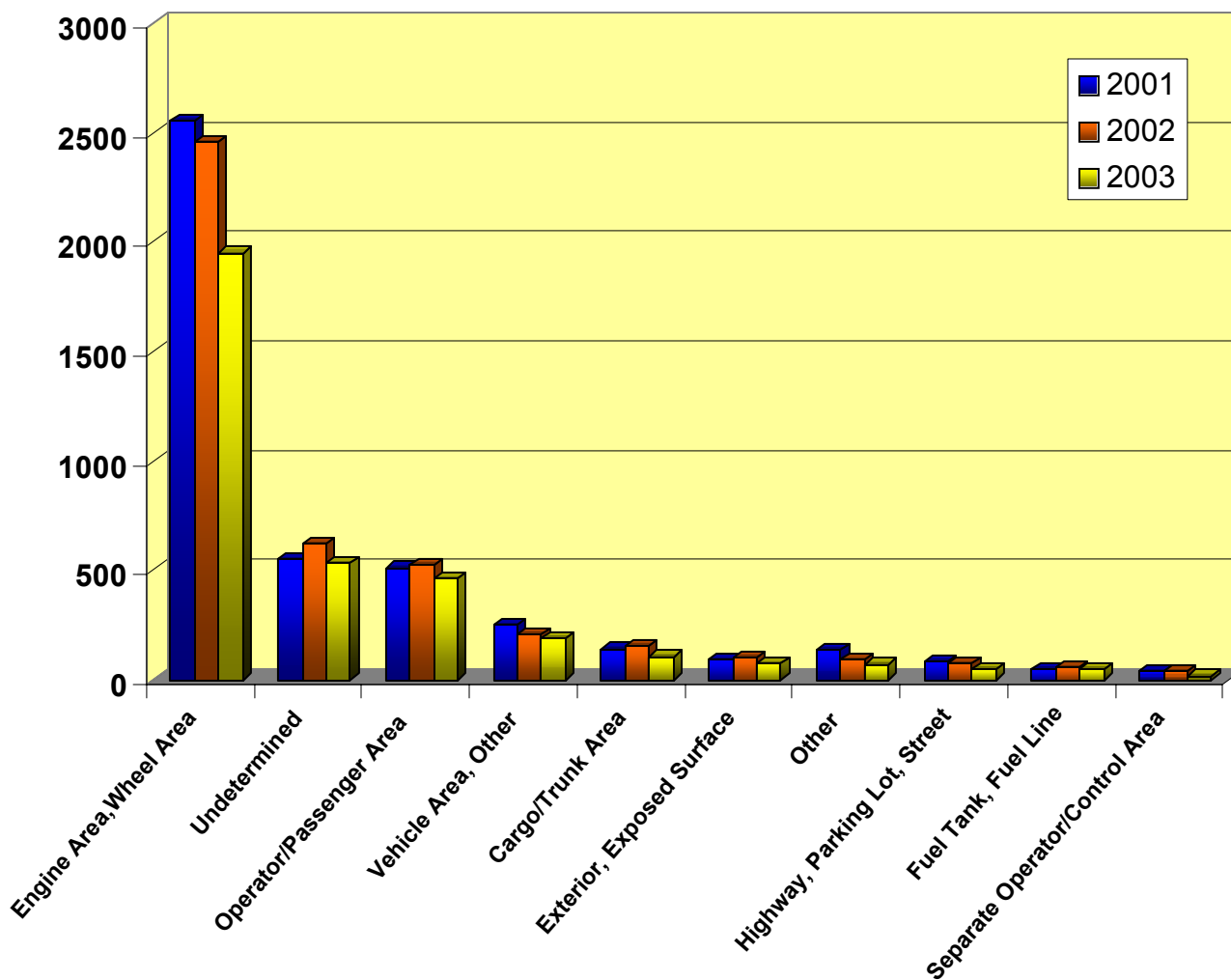
Area of Fire Origin - 2001	Total #	Property Loss	Contents Loss
Engine area, running gear, wheel area	2551	\$612,583,181.00	\$178,887.00
Undetermined	551	\$273,007,293.00	\$41,965.00
Operator/passenger area of transportation equip.	511	\$1,808,458.00	\$78,336.00
Vehicle area, Other	390	\$387,553.00	\$35,596.00
Cargo/trunk area - all vehicles	142	\$241,770.00	\$27,642.00
Exterior, exposed surface	95	\$107,505.00	\$206.00
Highway, parking lot, street: on or near	82	\$92,401.00	\$1,600.00
Fuel tank, fuel line	49	\$104,600.00	\$5,510.00
Separate operator/control area of transportation	42	\$123,417.00	\$200.00
	4413	\$888,456,178.00	\$369,942.00

Area of Fire Origin - 2002	Total #	Property Loss	Contents Loss
Engine area, running gear, wheel area	2459	\$3,553,727.00	\$151,283.00
Undetermined	624	\$924,111.00	\$162,967.00
Operator/passenger area of transportation equip.	525	\$1,648,502.00	\$129,653.00
Vehicle area, Other	304	\$375,112.00	\$12,515.00
Cargo/trunk area - all vehicles	151	\$368,350.00	\$83,710.00
Exterior, exposed surface	104	\$239,051.00	\$10,901.00
Highway, parking lot, street: on or near	75	\$148,800.00	\$28,510.00
Fuel tank, fuel line	54	\$66,546.00	\$1,369.00
Separate operator/control area of transportation	37	\$22,900.00	\$700.00
	4333	\$7,347,099.00	\$581,608.00

Area of Fire Origin - 2003	Total #	Property Loss	Contents Loss
Engine area, running gear, wheel area	1950	\$2,746,431.00	\$227,344.00
Undetermined	535	\$316,815.00	\$44,871.00
Operator/passenger area of transportation equip.	466	\$640,724.00	\$77,401.00
Vehicle area, Other	259	\$143,100.00	\$72,700.00
Cargo/trunk area - all vehicles	106	\$113,550.00	\$91,550.00
Exterior, exposed surface	75	\$90,000.00	\$1,100.00
Fuel tank, fuel line	48	\$8,000.00	\$100.00
Highway, parking lot, street: on or near	48	\$25,000.00	\$1,500.00
Outside area, Other	20	\$15,201.00	\$526.00
	3507	\$4,098,821.00	\$517,092.00



Top Ten Areas of Fire Origin in Vehicles 2001 to 2003

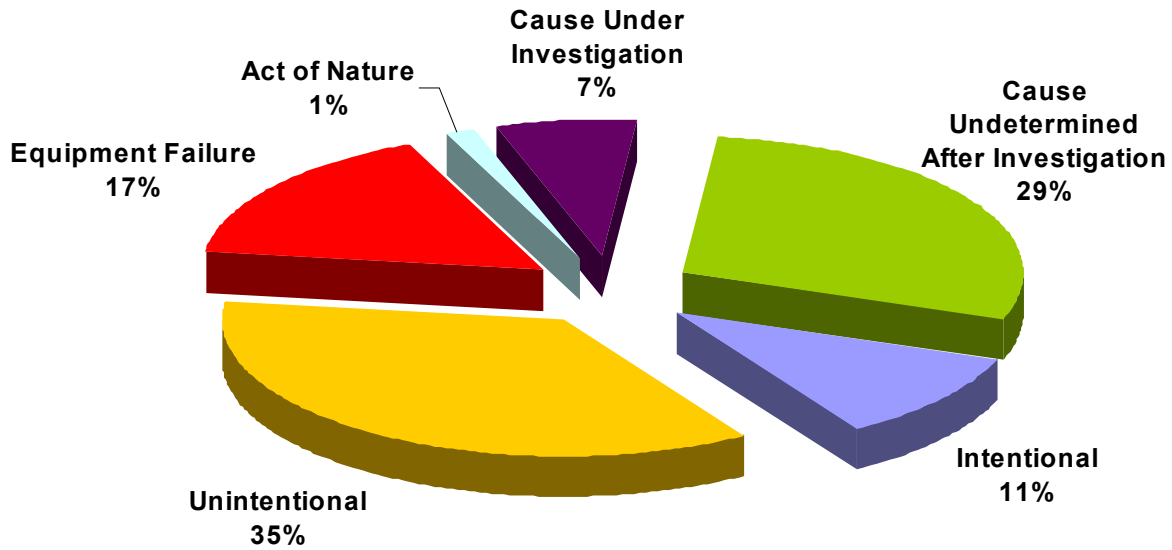


Photograph courtesy of Paul Allen

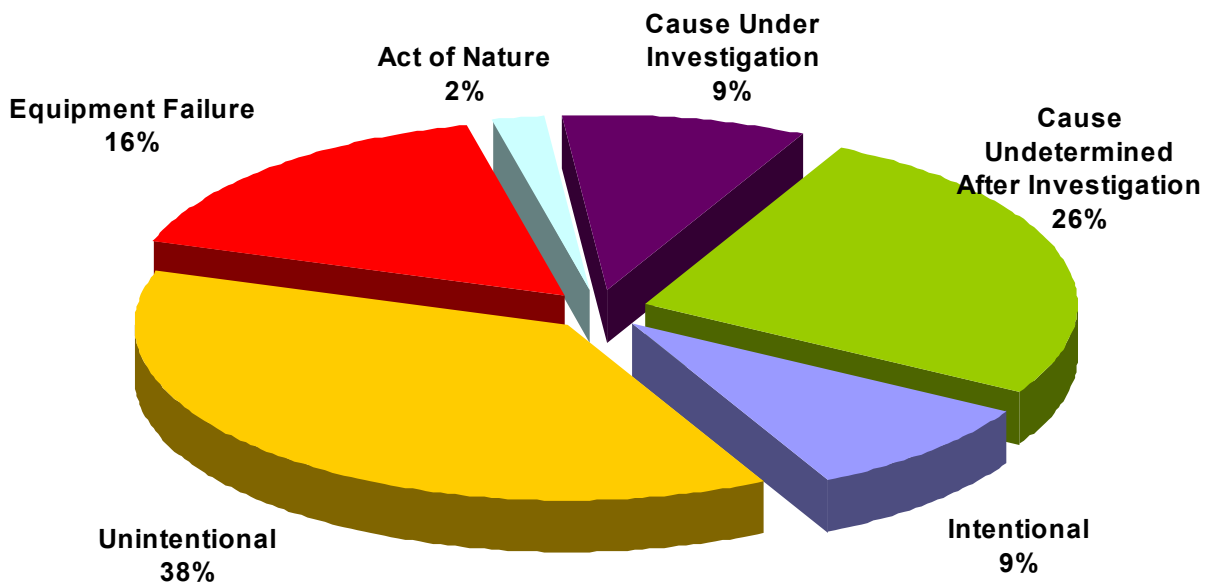


Figures represent cause of ignition for all reported fires.

Cause of Ignition 2001

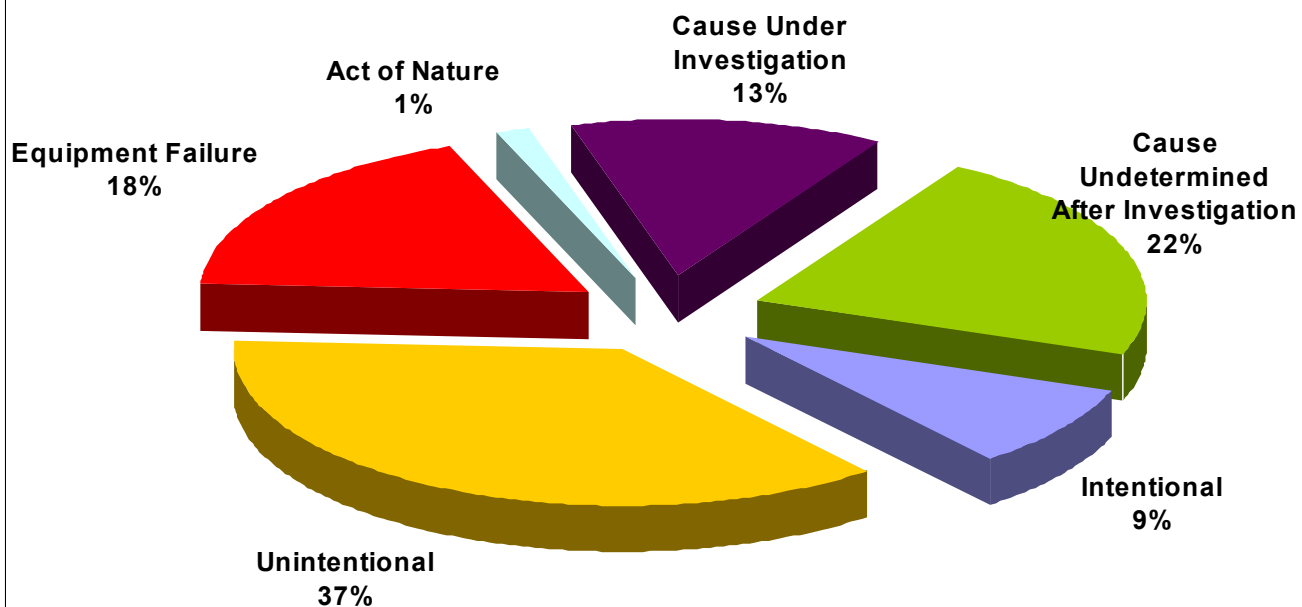


Cause of Ignition 2002

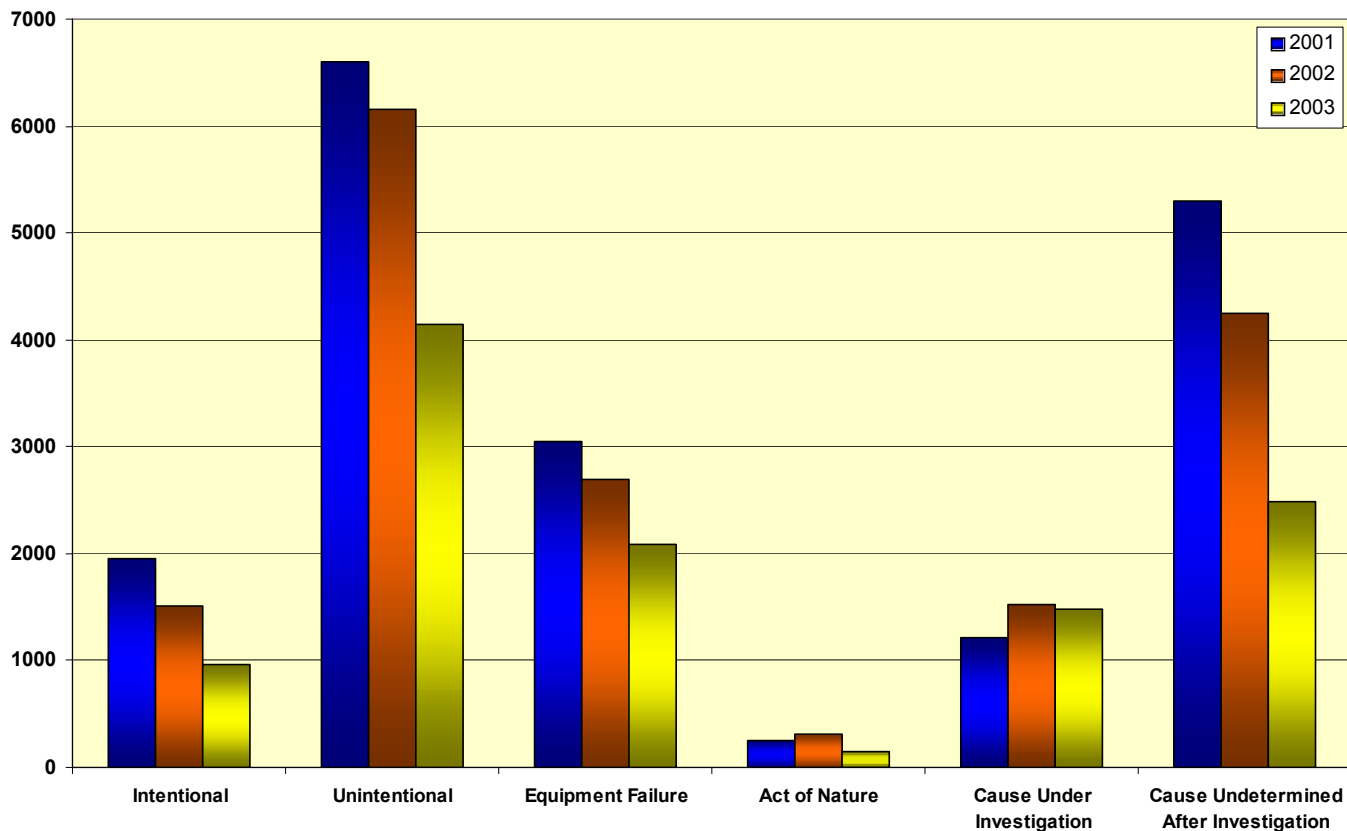




Cause of Ignition 2003

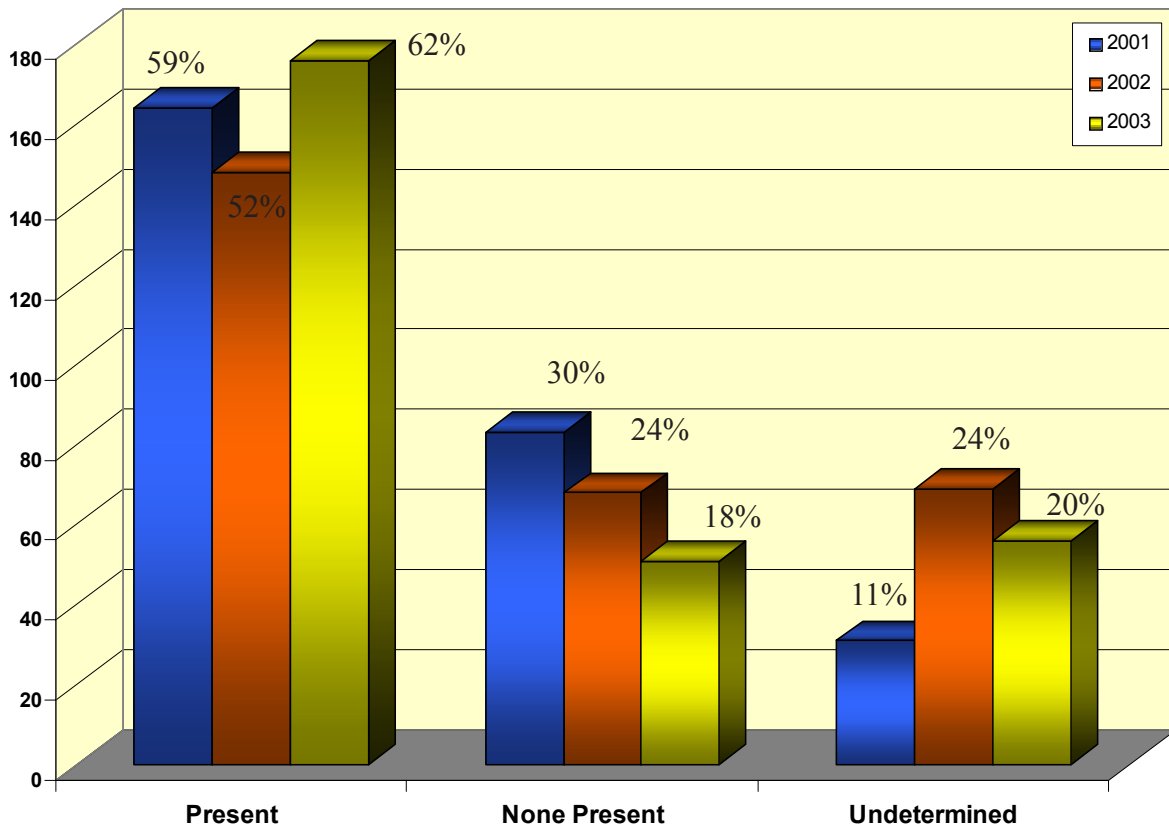


Cause of Ignition 2001 to 2003

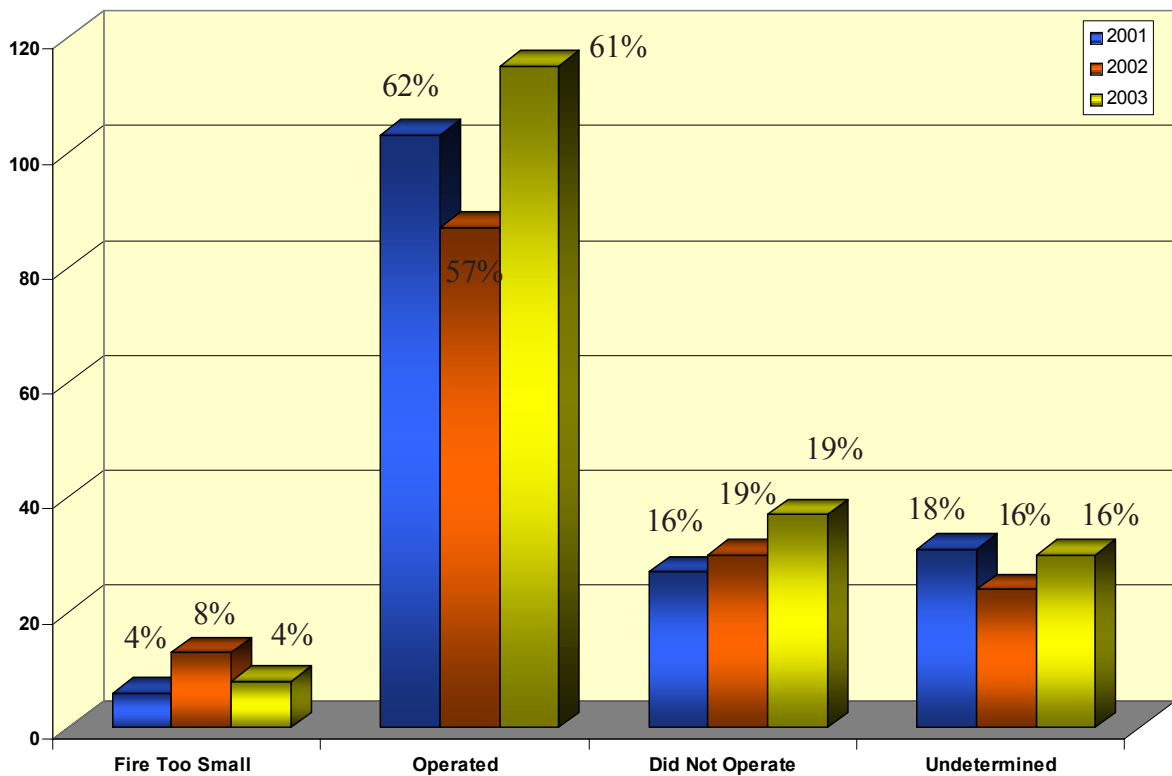




Detector Presence 2001 to 2003 *



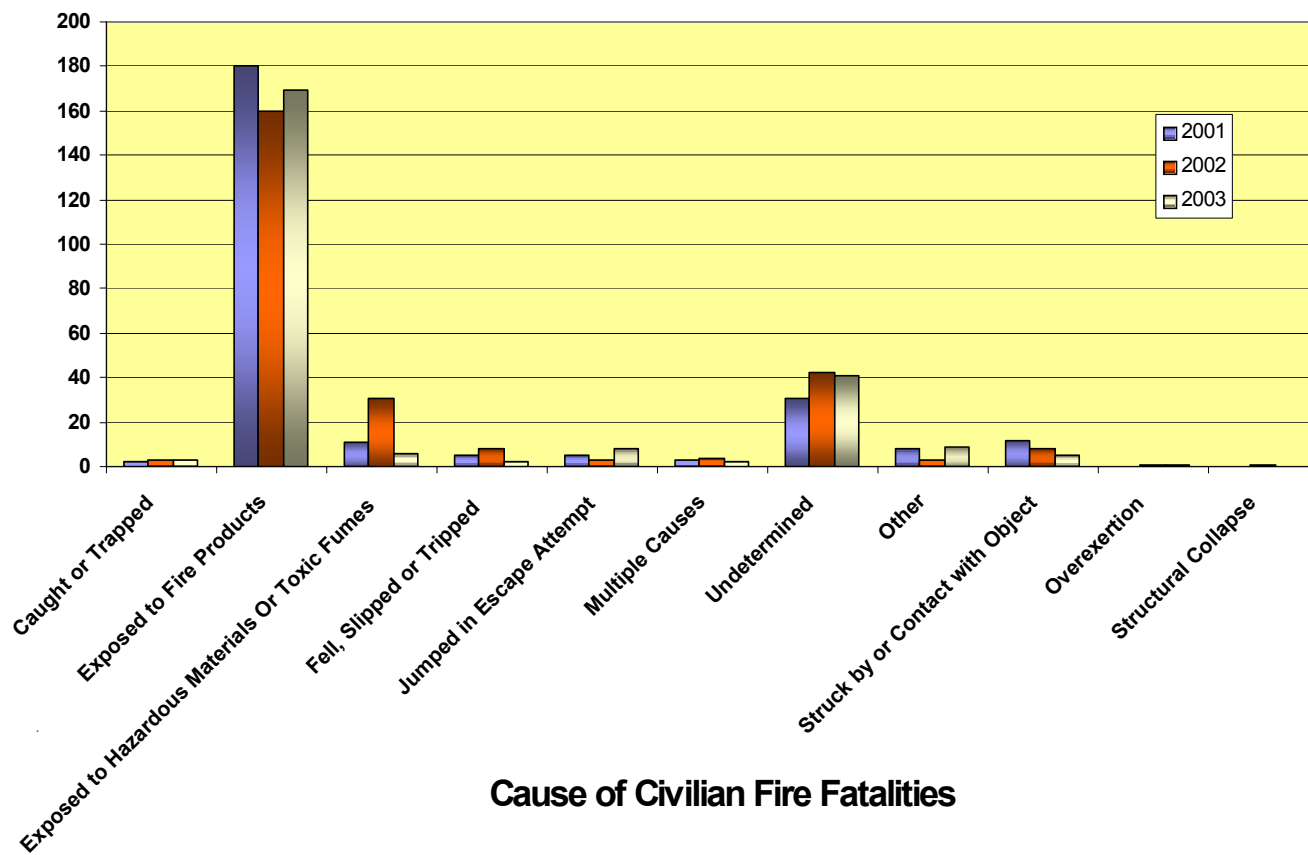
Detector Performance 2001 to 2003 *



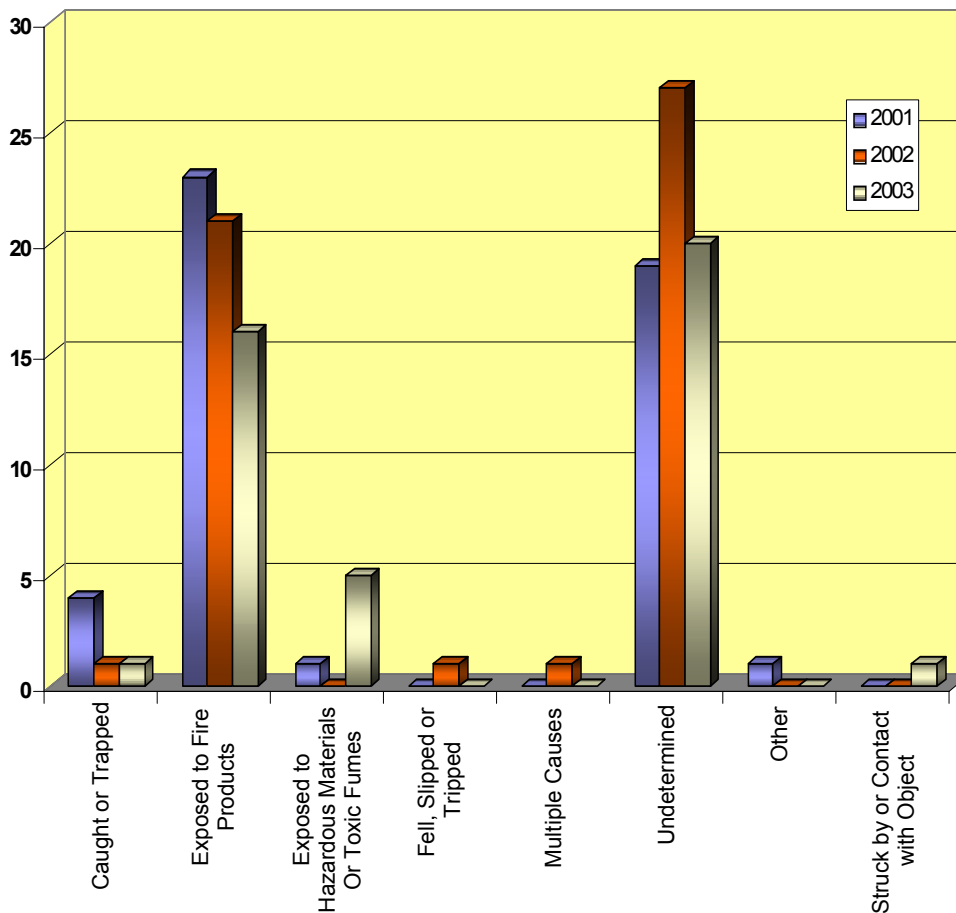
* Percentages reflect the year, not the category.



Cause of Civilian Fire Injuries

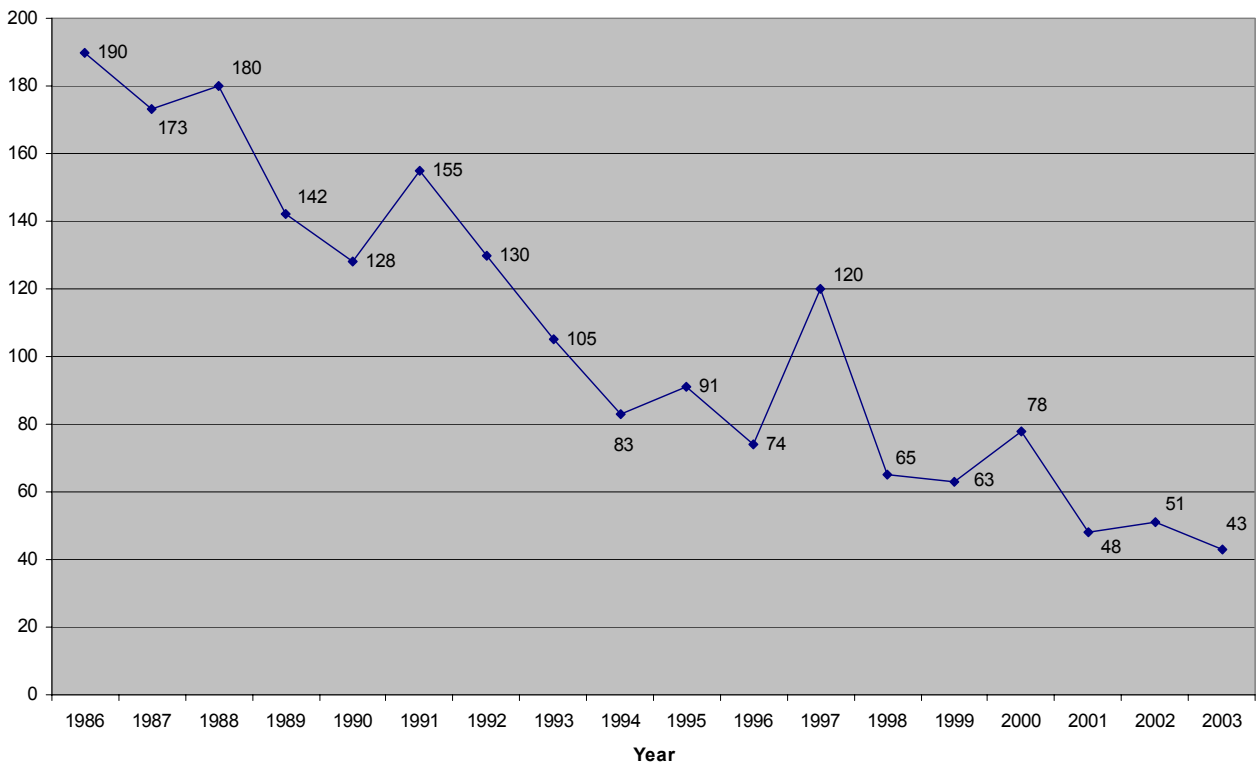
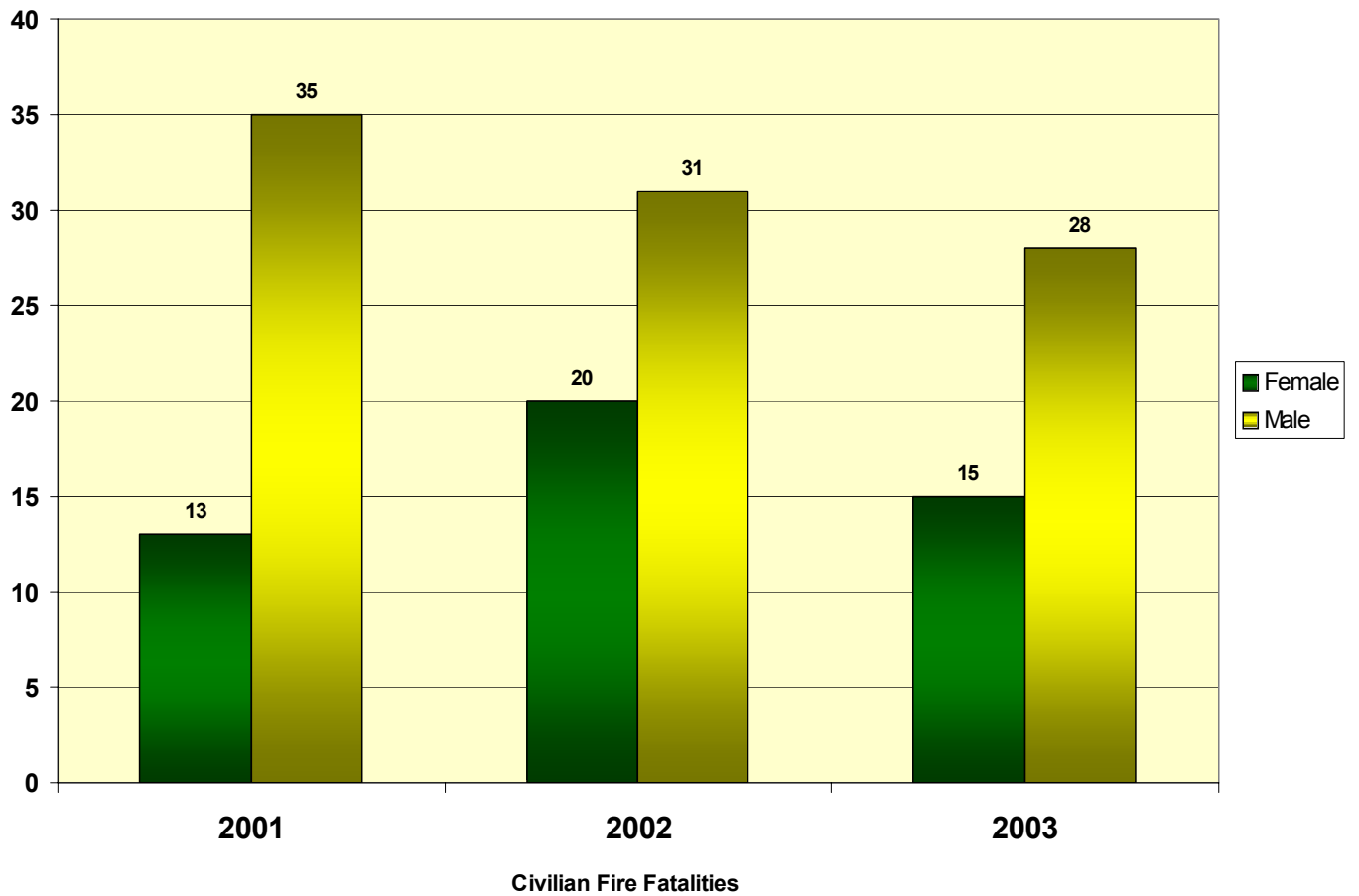


Cause of Civilian Fire Fatalities



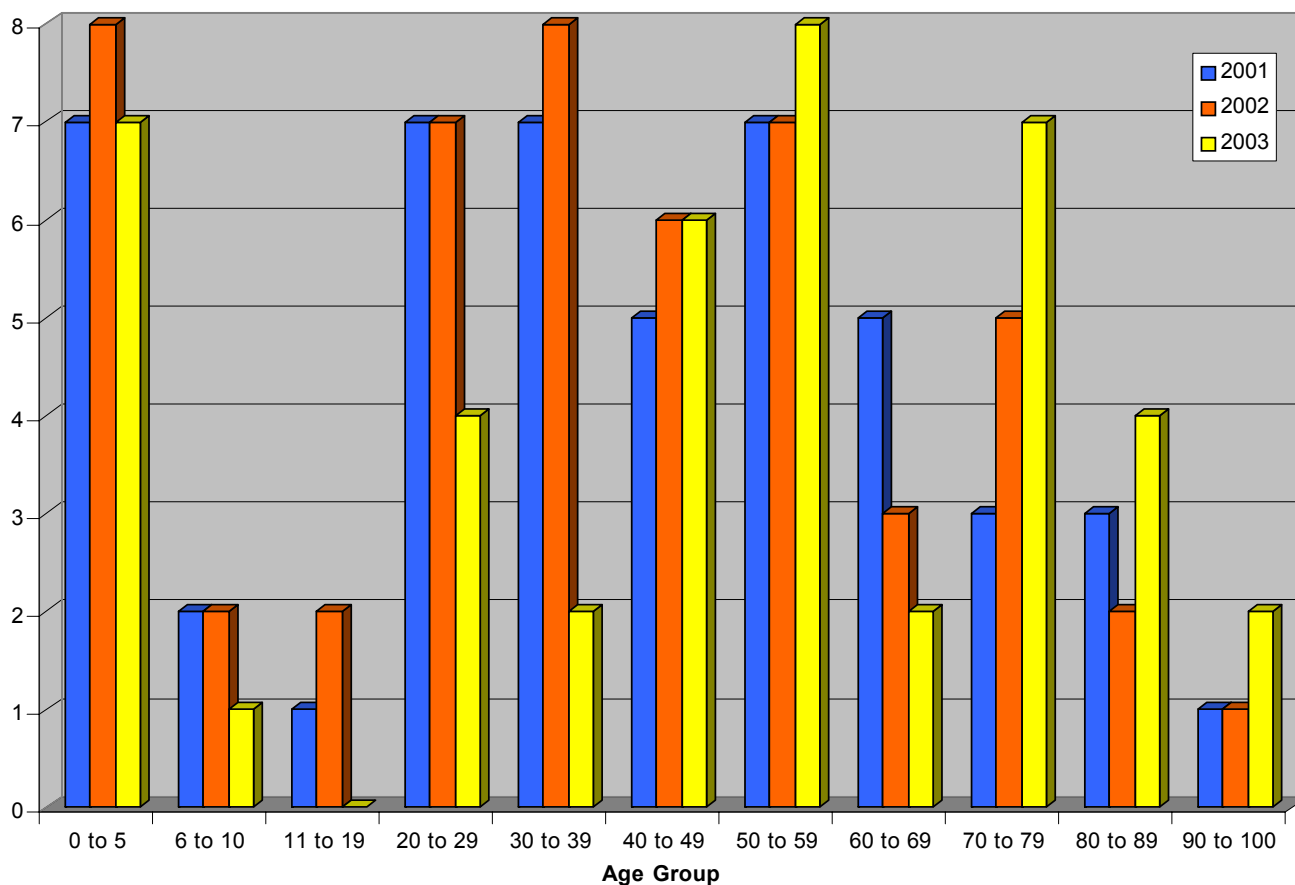


Civilian Fire Fatalities 2001 - 2003

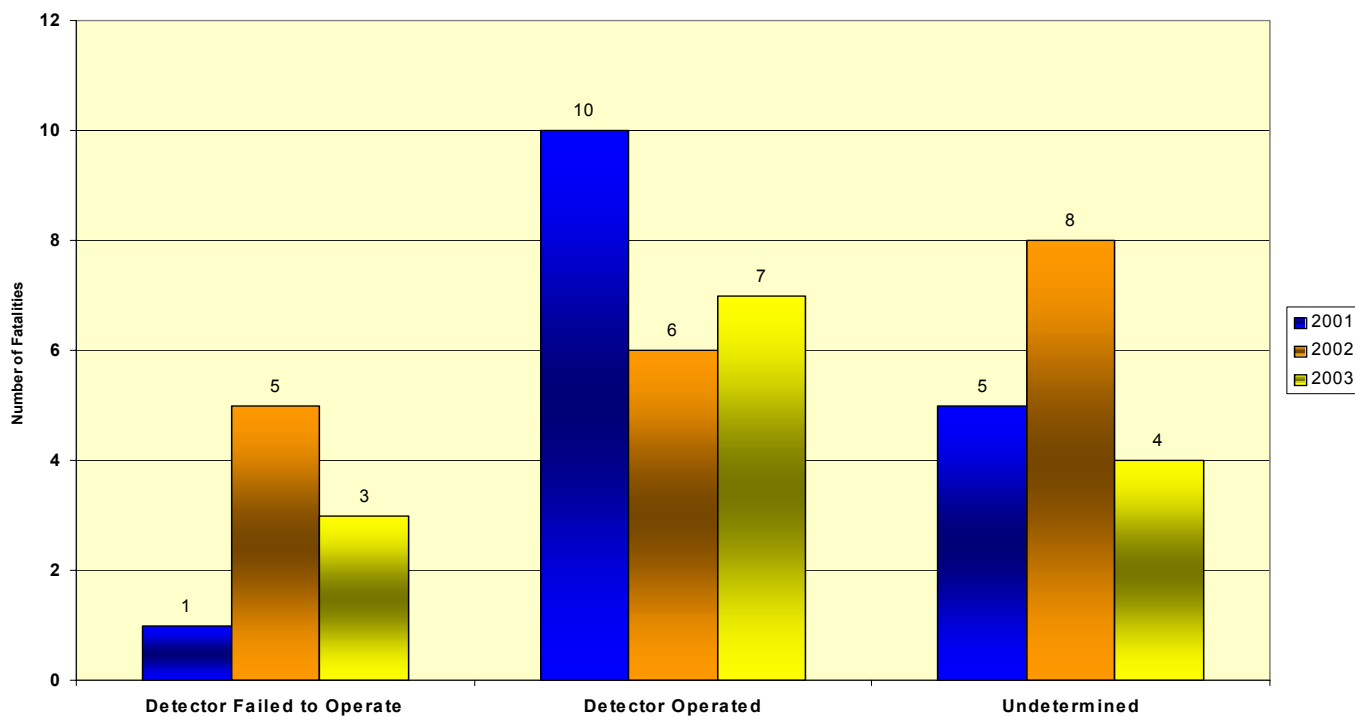




Civilian Fire Fatalities by Age Group 2001-2003

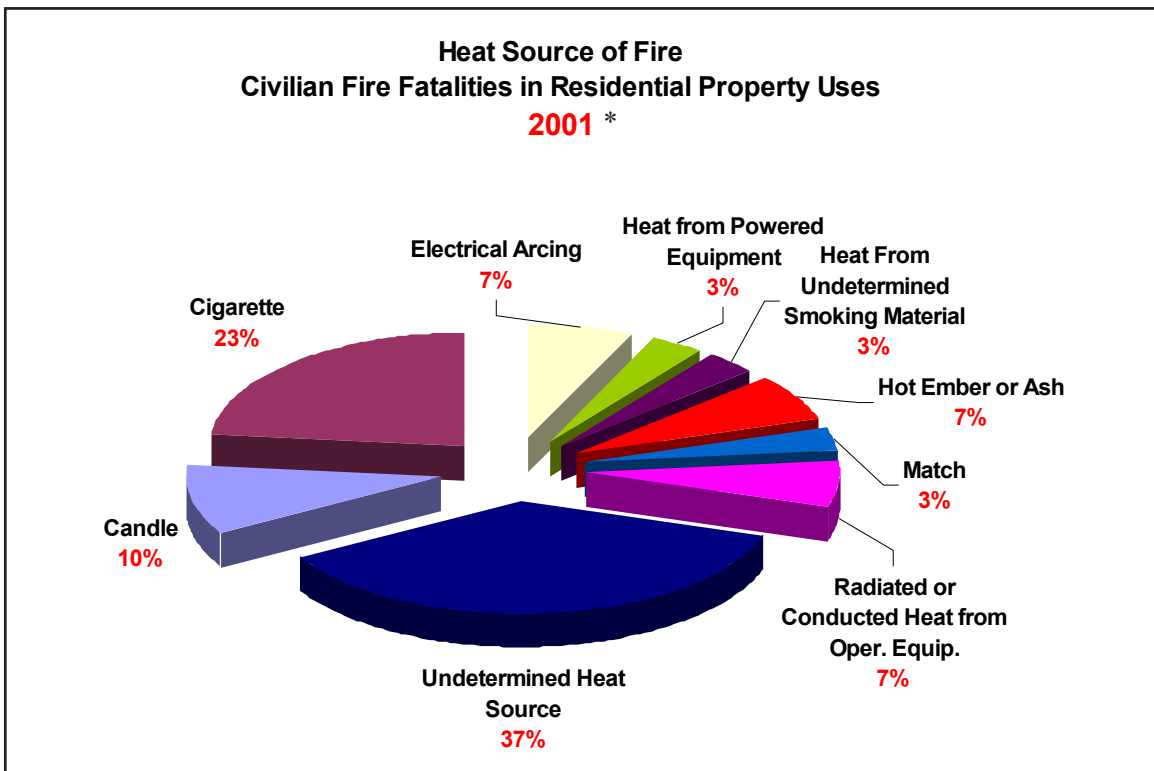
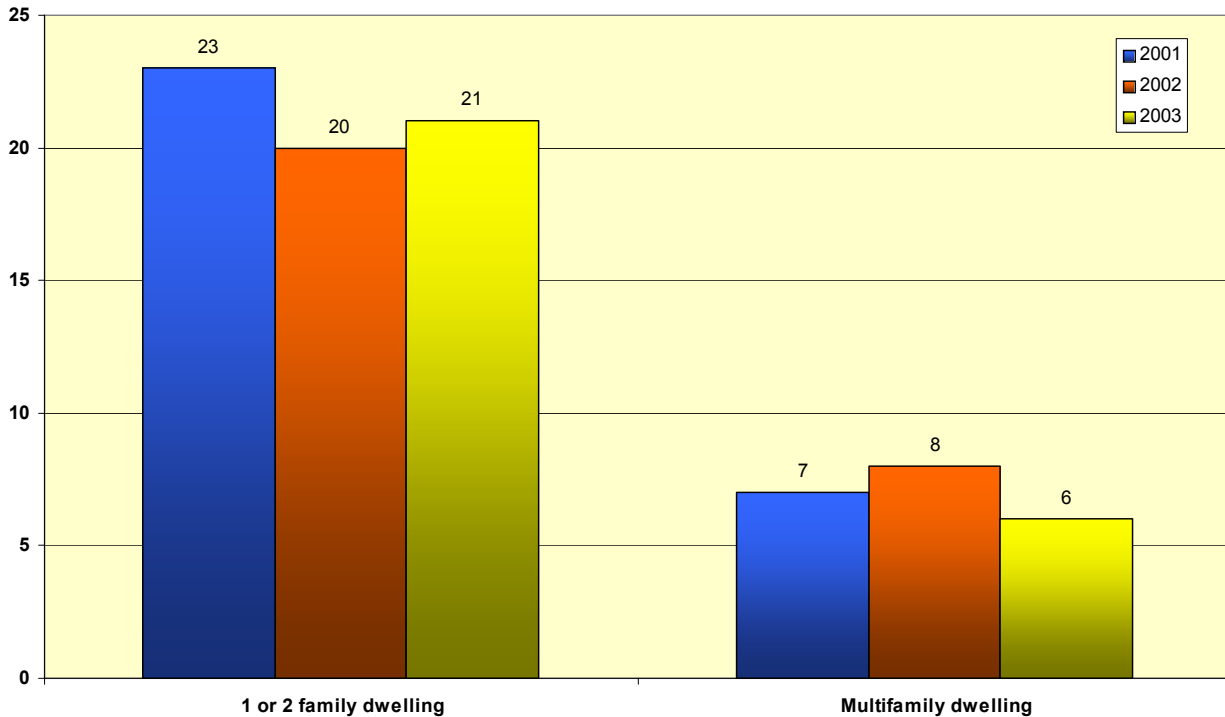


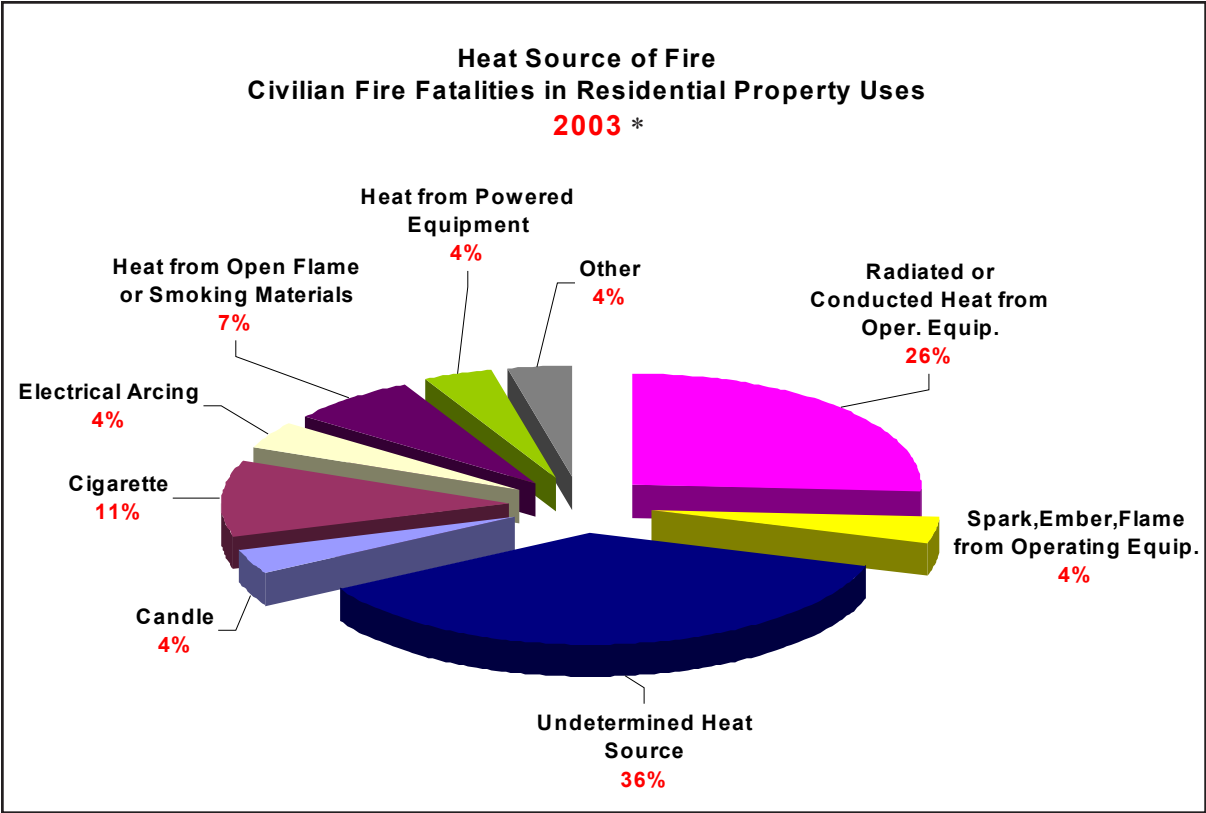
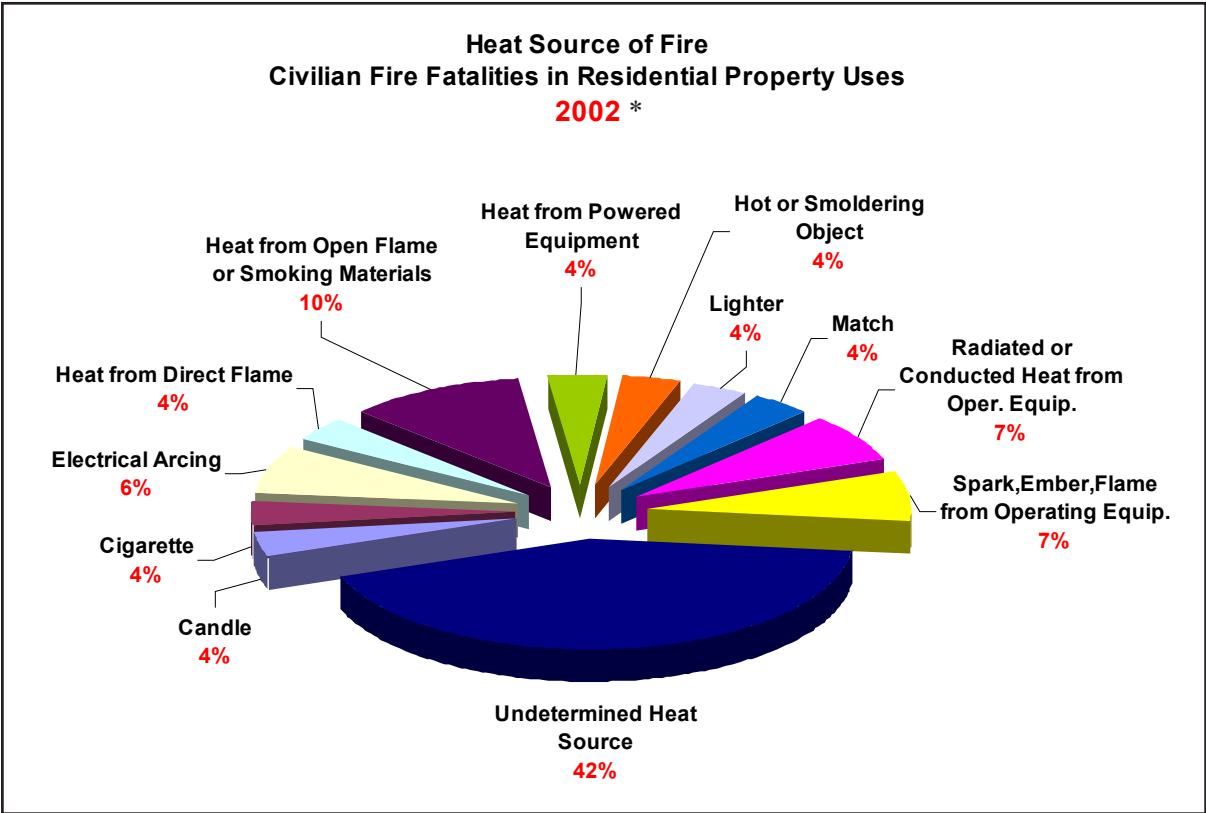
Civilian Fire Fatalities & Detector Performance 2001 to 2003





Civilian Fire Fatalities Occurring in Residential Property Uses 2001 to 2003





* Not all categories contain data for each year.



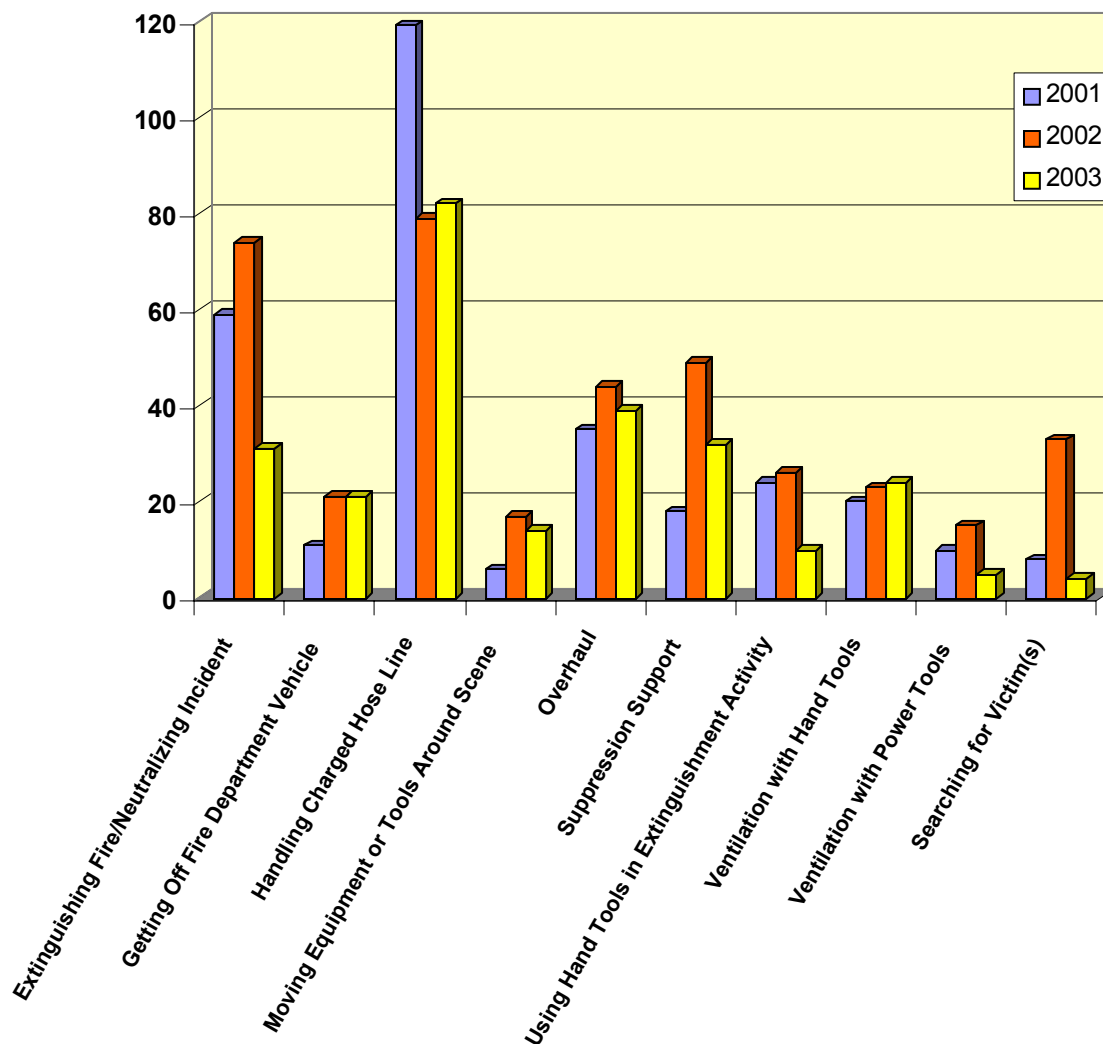
Firefighter Casualties Firefighter Fatalities

Firefighters risk their lives every time they respond to an incident. It is the responsibility of fire service managers to be aware of the dangers associated with firefighting and make firefighter safety a top priority.

The Division of Fire Safety investigates serious injuries and fatalities to firefighters. Reports of these investigations are available from the Division’s publication section, (609) 633-6120.

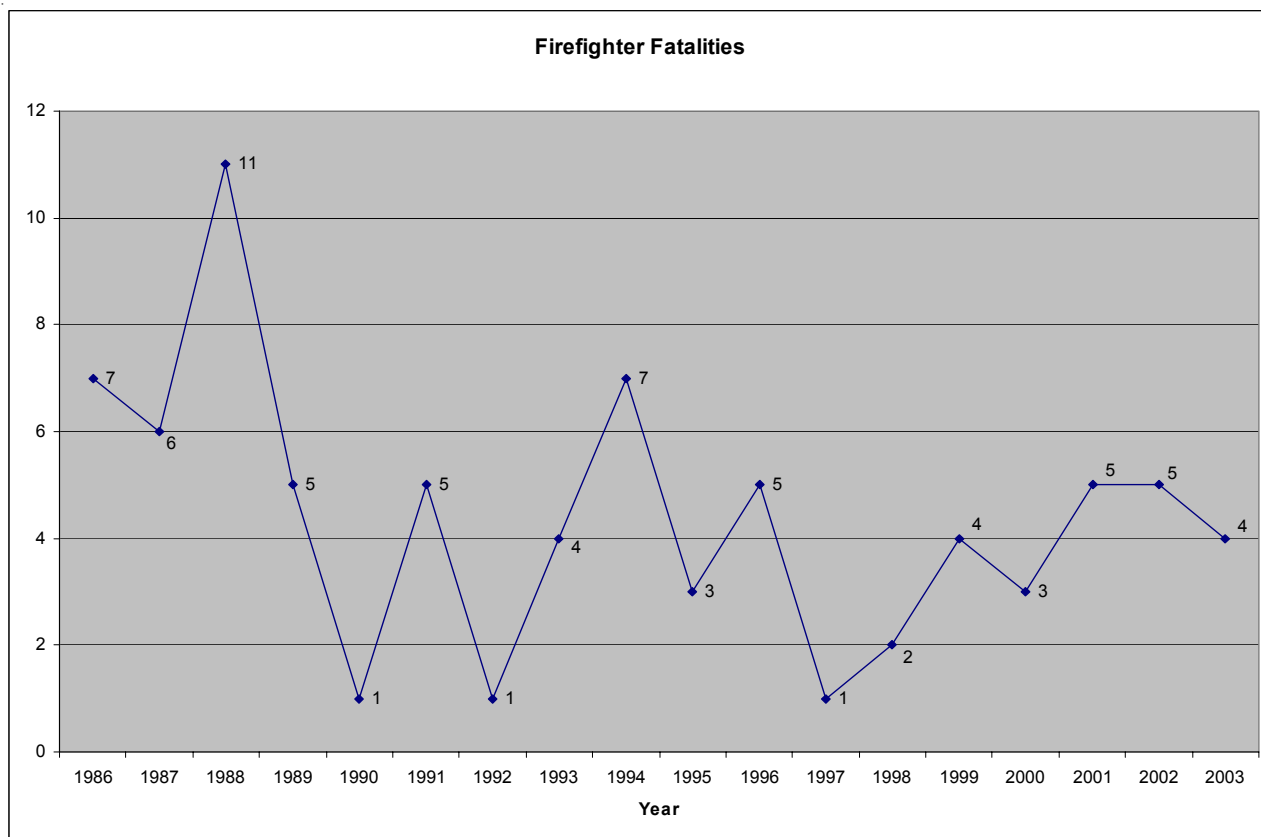
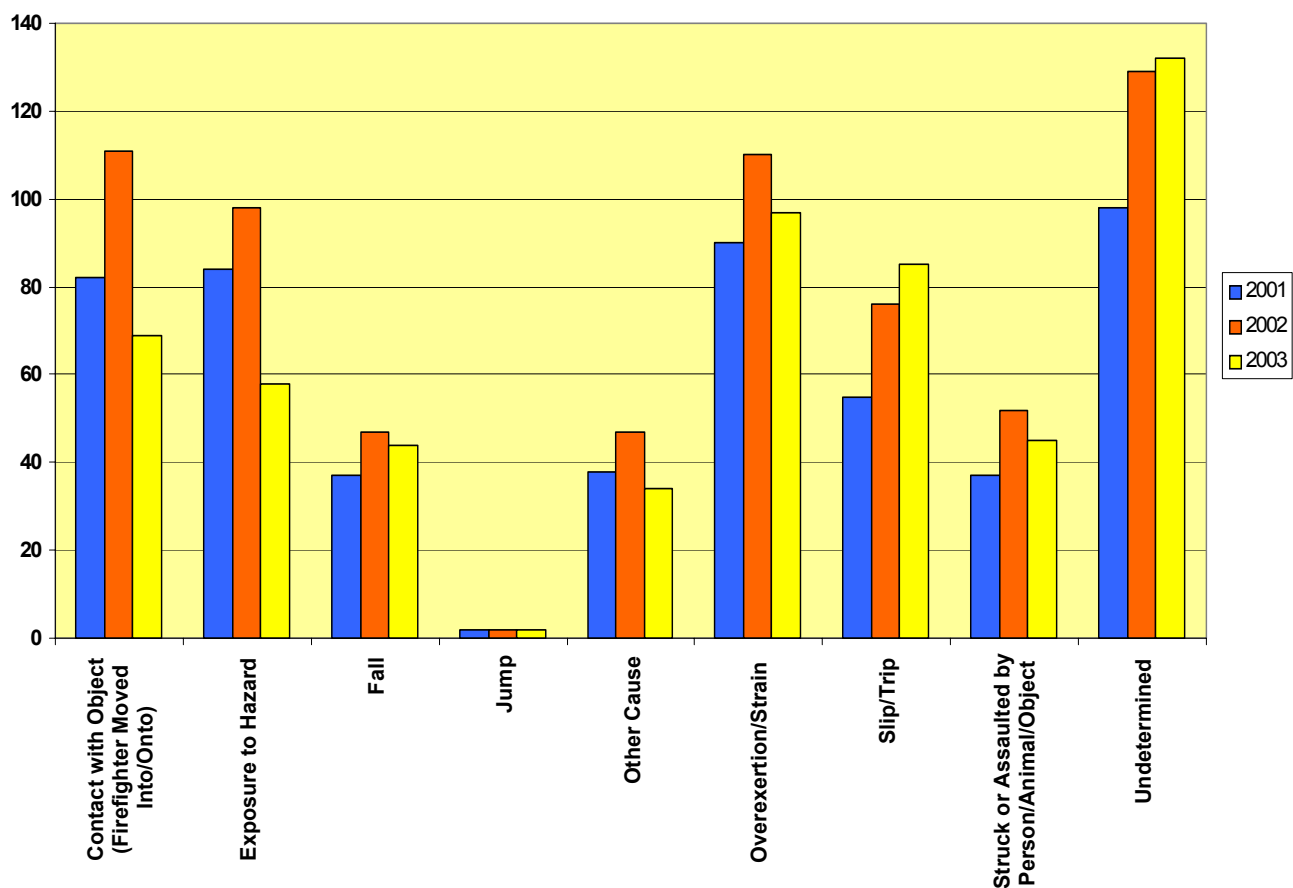
Note: The term “casualties” refers to injuries and fatalities.

Top Ten Activities of Fire Service Casualties 2001 to 2003



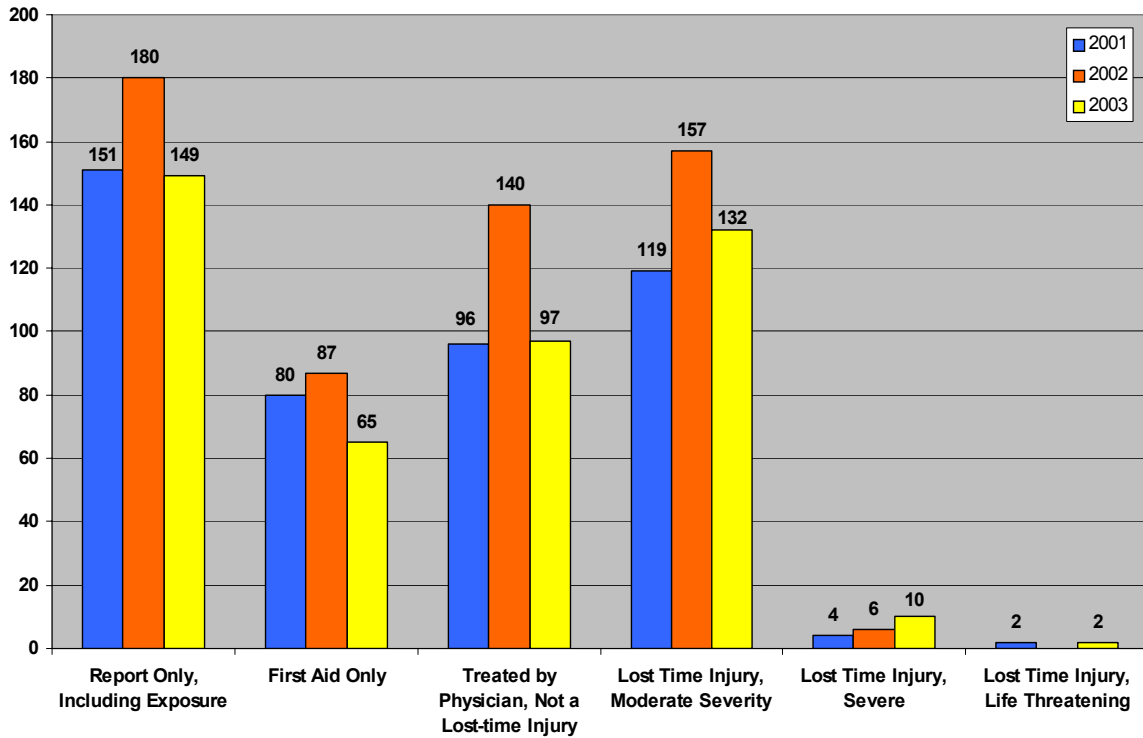


Cause of Fire Service Casualties

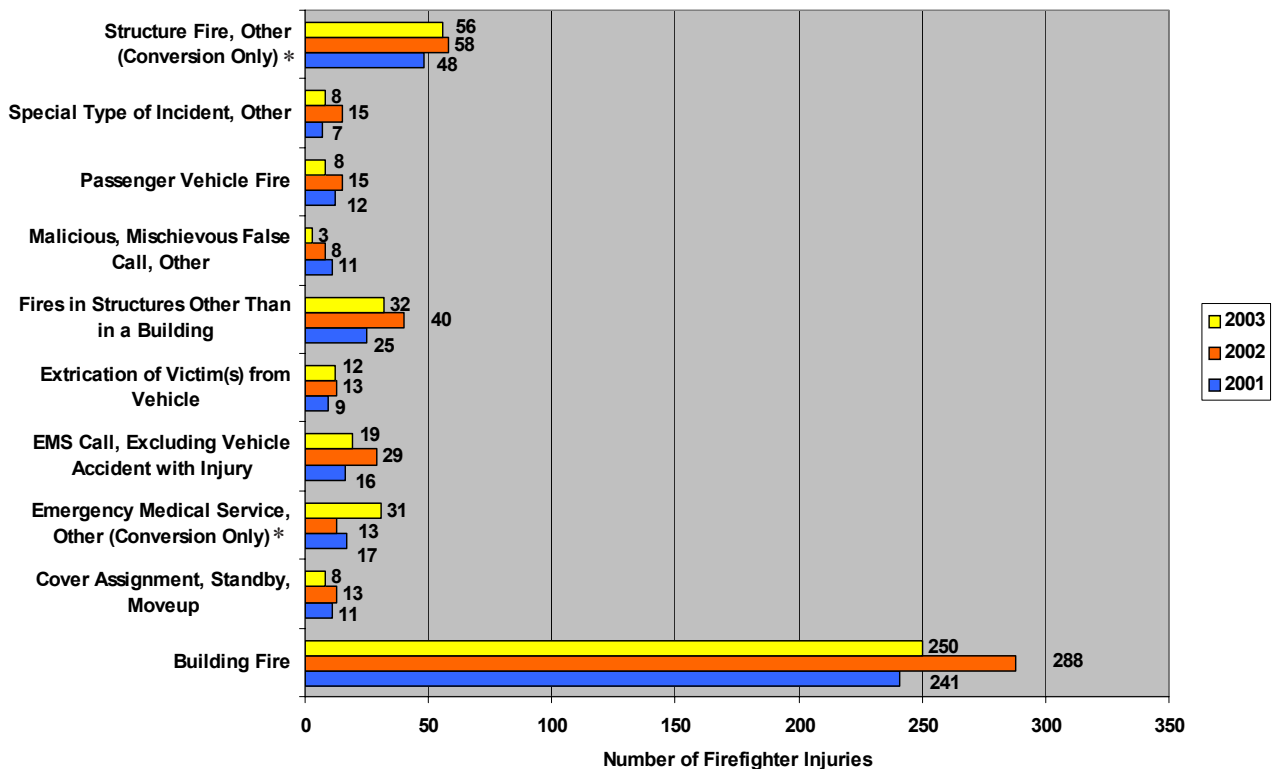




Severity of Firefighter Injuries 2001 to 2003



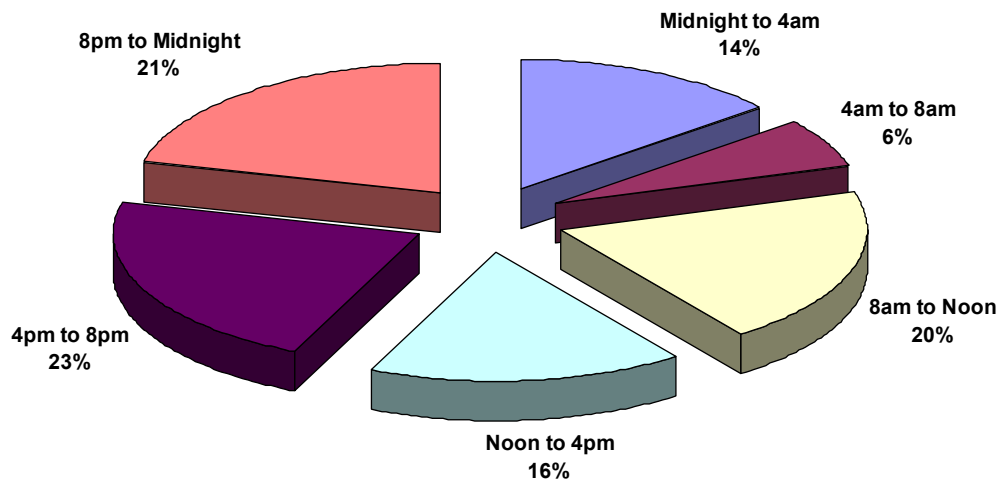
Firefighter Injuries 2001 to 2003 Top Ten Incident Types



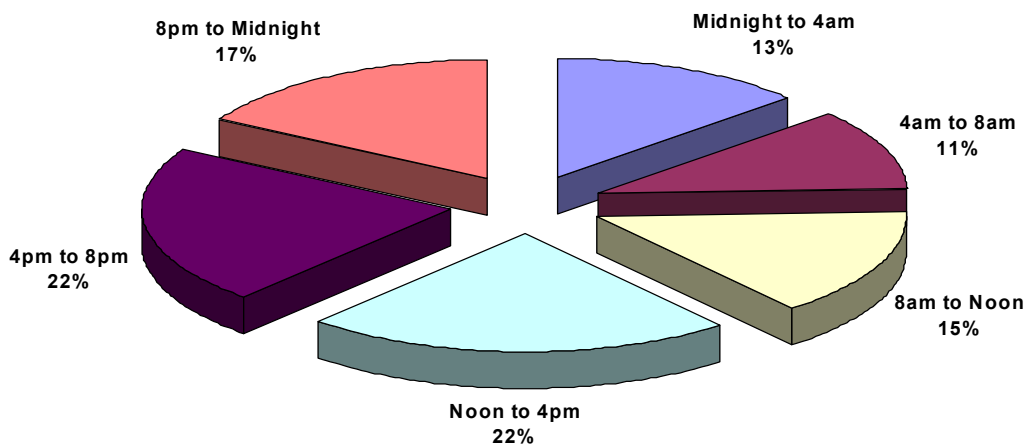
* Incident types converted from NFIRS version 4.1 to NFIRS version 5.0.



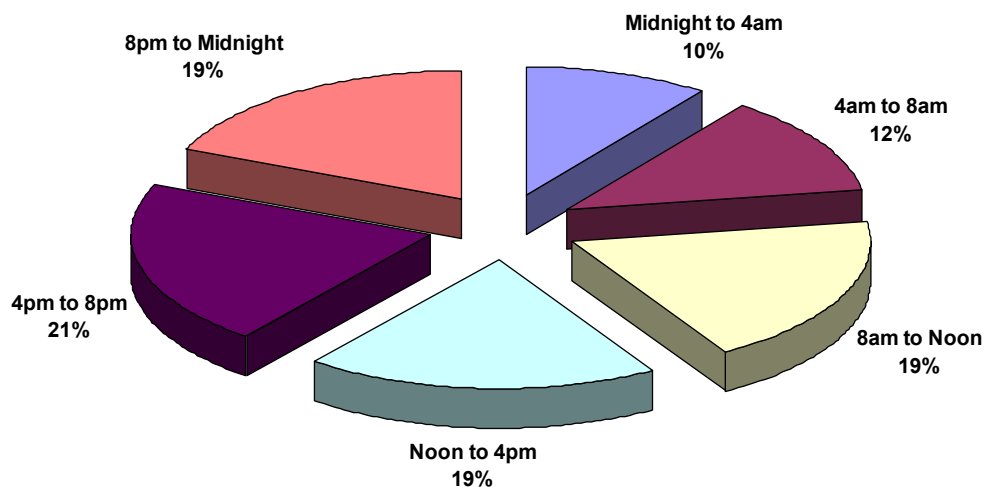
Time of Day Firefighter Injuries Occurred 2001



Time of Day Firefighter Injuries Occurred 2002



Time of Day Firefighter Injuries Occurred 2003





Thermal Imaging Camera Special Study

In April 2000, the Division of Fire Safety began the Thermal Imaging Camera Giveaway Program. Every fire department in the state received a Thermal Imaging Camera.

Through the great success of this program, the Division was able to set up a Thermal Imaging Camera Special Study in cooperation with NFIRS 5.0 vendors throughout the state. The figure below shows the results of participation of reporting fire departments in the Special Study.

The code used for this study is “6000 -Thermal Imaging Camera” and there are nine values associated with the study.

THERMAL IMAGING CAMERA SPECIAL STUDY

Values	Year		
	2001	2002	2003
Not used	31666	52394	127736
Used to locate primary fire	1219	2646	6895
Used to locate fire extension	1520	2742	5306
Used to conduct primary search/no victims present	62	125	1241
Used to conduct primary search/victims found	4	14	104
Used to conduct primary search/victims not found	22	27	75
Used to search for missing firefighter(s)/firefighter(s) found	0	0	0
Used to search for missing firefighter(s)/firefighter(s) not found	3	1	0
Other	1476	3141	9437





Reporting Fire Departments

The following fire departments have made this report possible by participating in the NFIRS program.

ATLANTIC COUNTY

FD NAME	FDID	2003	2002	2001
Absecon Fire Dept	01011	X	X	X
Atlantic City Fire Dept	01020			*
So. Jersey Trans. Auth. FD	01024		X	*
Brigantine Fire Dept	01031	X	X	X
Landisville Vol Fire Co #1	01041	X		
Minotola Fire Co	01042	X	*	X
Richland Vol Fire Co #1	01051	X	X	
East Vineland Fire Co #2	01052			
Newtownville Fire Co	01053			*
Milmay Vol Fire Co	01054			
Collings Lakes Fire Dept	01055	X	X	X
Egg Harbor City Fire Dept	01071	X	X	X
Cardiff Vol Fire Co	01081		X	X
Bargaintown Vol Fire Co #2	01082	X	X	X
Scullville Fire Co #3	01083	X	X	X
Farmington Vol Fire Co #4	01084			*
West Atlantic City Fire Dept	01085			
Estell Manor Vol Fire Co	01091			X
Folsom Vol Fire Co	01101		X	X
Oceanville Vol Fire Co #1	01111	X	X	X
Germania Vol Fire Co #2	01112	X	X	
Pomona Vol Fire Co #3	01113	X	X	X
Bayview Fire Co #4	01114	X	X	X
South Egg Harbor Vol Fire Co	01115	X	X	X
Mays Landing Fire Dept	01121	X	*	X
Mizpah Vol Fire Co	01122			
Laureldale Fire/Rescue Co	01123	X	X	X
Weymouth Vol Fire Co	01124			
Cologne Vol Fire Co	01125	X	X	X
Hammonton Fire Dept	01131			*
Linwood Fire Dept	01141	*	X	X
Longport Vol Fire Dept	01151	X	X	X
Margate City Fire Dept	01161	X	X	X
Elwood Vol Fire Co	01171	X	X	X
Nesco Vol Fire Co	01172		X	X
Weekstown Vol Fire Co	01173	X	X	X
Sweetwater Vol Fire Co	01174	X	X	X
Northfield Fire Department	01181	X	X	X
Pleasantville Fire Dept	01191	X	X	X
Port Republic Vol Fire Co	01201			
Somers Point City Fire Dept	01211	X	X	X
Ventnor City Fire Dept	01221	X	X	X
Dorothy Vol Fire Co	01232		*	X

BERGEN COUNTY

FD NAME	FDID	2003	2002	2001
Allendale Boro Fire Dept	02010	X	X	X
Alpine Fire Dept	02020	X	X	X
Bergenfield Boro Fire Dept	02030	X	X	X
Bogota Fire Dept	02040	X	X	X

FD NAME	FDID	2003	2002	2001
Carlstadt Fire Dept	02050	X	X	X
Cliffside Park Fire Dept	02060		X	
Closter Fire Dept	02070	X	X	X
Cresskill Fire Dept	02080		X	X
Demarest Boro Fire Dept	02090	X	X	X
Dumont Fire Dept	02100		X	X
Elmwood Park Fire Dept	02110	X	X	X
East Rutherford Fire Dept	02120	X	X	X
Edgewater Fire Dept	02130		X	X
Emerson Fire Dept	02140	X	X	X
Englewood City Fire Dept	02150	X	X	X
Englewood Cliffs Fire Dept	02160	X	X	X
Fair Lawn Fire Dept	02170	X	X	X
Fairview Vol Fire Dept	02180			
Fort Lee Fire Dept	02190	X	X	
Franklin Lakes Boro Fire Dept	02200	X	*	X
Garfield Fire Dept	02210	X	X	X
Glen Rock Fire Dept	02220	X	X	X
Hackensack Fire Dept	02230	X	X	X
Harrington Park Fire Dept	02240	X	*	X
Hasbrouck Hgts Fire Dept	02250	X		
Haworth Fire Dept	02260		X	
Hillsdale Vol Fire Dept	02270	X	*	*
Ho Ho Kus Fire Dept	02280	X	X	X
Leonia Boro Fire Dept	02290	X	X	X
Little Ferry Fire Dept	02300		X	X
Lodi Boro Fire Dept	02310	X	X	X
Lyndhurst Vol Fire Dept	02320	X	X	*
Mahwah Fire Dept	02330	X	X	X
Maywood Fire Dept	02340	*	*	X
Meadowlands Fire Dept	02900			N/A
Midland Park Fire Dept	02350		X	X
Montvale Boro Fire Dept	02360	X		
Moonachie Fire Dept	02370	X	X	X
New Milford Fire Dept	02380	X	X	X
North Arlington Fire Dept	02390	X	X	X
Northvale Fire Dept	02400		*	X
Norwood Fire Dept	02410	X	X	X
Oakland Boro Vol Fire Dept	02420			X
Old Tappan Boro Fire Co #1	02430	X	X	X
Oradell Vol Fire Dept	02440	X	X	X
Palisades Park Fire Dept	02450			
Paramus Fire Dept	02460			
Park Ridge Fire Dept	02470	X	X	X
Ramsey Boro Fire Dept	02480	X	X	X
Ridgefield Fire Dept	02490	X	X	X
Ridgefield Park Village FD	02500	X	X	X
Ridgewood Fire Dept	02510	X	X	X
River Edge Vol Fire Dept	02520	*		
River Vale Twp Fire Dept	02530	X	X	X
Rochelle Park Twp Fire Dept	02540		X	X
Rockleigh Fire Dept	02550	X		
Rutherford Fire Dept	02560	X	X	X
Saddle Brook Twp Fire Dept	02570	X	X	X
Saddle River Fire Dept	02580	X	X	X

* Less than six months of data submitted.



FD NAME	FDID	2003	2002	2001
South Hackensack Twp Fire Dept	02590	X	X	X
Teaneck Fire Dept	02600	X	X	X
Tenafly Fire Dept	02610	X	X	X
Upper Saddle River Fire Dept	02630	X	X	X
Waldwick Boro Fire Dept	02640	*	*	X
Wallington Boro Fire Dept	02650	X	X	X
Twp of Washington Fire Dept	02660	X	X	X
Westwood Vol Fire Dept	02670	X	X	X
Woodcliff Lake Fire Dept	02680			
Wood Ridge Fire Dept	02690	X	X	X
Wyckoff Twp Vol Fire Dept	02700	X	X	X

BURLINGTON COUNTY

FD NAME	FDID	2003	2002	2001
Maple Shade Fire Dept	03101	X	X	X
Washington Fire Co #1	03111	X	X	*
Beverly Fire Dept	03120	X	*	
Lumberton Fire Dept	03131	X	X	X
Willingboro Vol Fire Co #1	03161	X	X	X
Vincent Fire Co	03171	X	X	X
Hampton Lakes Vol Co #1	03172	X	X	X
Browns Mills Fire Dept	03181	X	X	X
Country Lakes Vol Fire Co	03183	*	X	X
Presidential Lakes Fire & Res	03184			X
Magnolia Road Fire Co #2	03185	X	X	X
Goodwill Fire Co #1	03191	X	X	X
Cinnaminson Fire Dept #1	03200	X	X	X
Juliestown Vol Fire Co	03211			X
Jacksonville Fire Co	03212			
Springfield Twp Fire Co	03213	X	X	*
Evesham Fire-Rescue	03220	X	X	X
Delran Fire Dept	03230	X	X	X
Riverton Fire Dept	03241	X	X	X
Medford Fire Division	03250	X	X	X
Union Fire Co #1	03261			
Chesterfield Hose Co	03262	*	X	
Westampton Twp Fire Dept	03272		X	*
Indian Mills Vol Fire Co	03281		X	
Chatsworth Fire Co	03291	X	X	
Lebanon Lakes Vol Fire Co	03292	X	X	X
Burlington Twp Fire Dept #1	03300		X	X
Moorestown Fire Dept Dist #1	03310	X	*	X
Lenola Vol Fire Co #1	03313	X		*
Bordentown Twp Fire Dist #1	03321	X	X	X
Bordentown Twp Fire Dist #2	03322	X	*	X
Franklin Fire Co #1	03331	X	X	X
Eastampton Twp Fire & Rescue	03340			
Mt Laurel Fire Dept	03360	X	X	
Medford Lakes Fire Dept	03371	X	*	X
Cookstown Vol Fire Co #1	03381	*	*	X
Hainesport Vol Fire Co	03391	X	X	X
Florence Twp Fire Dept	03400	X	X	X
Wrightstown Vol Fire Co	03411	X	X	X
New Gretna Fire Co	03421			
Medford Farms Vol Fire Co	03431	X	X	
Green Bank Fire Co	03451			
Lower Bank Vol Fire Co	03452	X	X	X
Jacobstown Vol Fire Co	03461	X	X	X
Mt Holly Fire Dist #1	03500			X

* Less than six months of data submitted.

FD NAME	FDID	2003	2002	2001
Consolidated Fire Assn	03601			
Bordentown City Fire Dept	03602	*	X	X
Riverside Fire Co #1	03701	X	*	*
Palmyra Fire Dept	03801	X	X	X
City of Burlington Fire Dept	03900	X	X	X

CAMDEN COUNTY

FD NAME	FDID	2003	2002	2001
Audubon Boro Fire Co #1	04011	X	X	*
Haddon Heights Fire Dept	04021	X	X	X
Bellmawr Fire Dept	04032	X	X	X
Bellmawr Park Vol Fire Co	04033	X	X	*
Mt Ephraim Fire Department	04040	X	X	X
Gloucester City Fire Dept	04051	X	X	X
Runnemede Fire Dept	04075	*	*	X
Glendora Vol Fire Co	04081	*	X	X
Chews Landing Fire Dept	04082	X	X	X
Blenheim Fire Co #1	04083	*	X	X
Blackwood Fire Co	04084	*	X	X
Gloucester Twp Fire Dist #5	04085			
Erial Vol Fire Co	04086	X	X	X
Barrington Fire Co #1	04091	X	*	X
City of Camden Fire Dept	04100	X	X	X
Pennsauken Fire Dept	04110	X		
Niagara Fire Co	04129		*	X
Cherry Hill Fire Dept	04130	X	X	X
Haddon Fire Co #1	04141	X	*	X
Westmont Fire Co	04151	X	X	
West Collingswood Hgts FD	04152	X	*	X
Collingswood Fire Dept	04161	X	X	X
Woodlynne Fire Co #1	04173	X		X
Oaklyn Fire Dept	04183	X	X	X
Audubon Park Fire Dept	04193	X	X	X
Berlin Boro Fire Co	04211	X	X	X
West Berlin Fire-Rescue	04222	*	X	X
Waterford Twp Fire Dept	04230	X	X	X
Chesilhurst Vol Fire Co #1	04241			
Winslow Twp Fire Dist #1	04250	X	N/A	N/A
Winslow Fire Co	04251	N/A	X	X
Cedar Brook Vol Fire Co	04253	N/A	X	X
Tansboro Fire Co #1	04254	N/A	X	X
Albion Vol Fire Co	04256	N/A	X	X
Sicklerville Fire Co	04257	N/A	X	X
Waterford Vol Fire Co	04258	N/A	X	X
Elm Vol Fire Dept	04259	N/A	X	X
Ancora Fire Dept	04261	X	X	X
Lawnside Fire Co #1	04272	X	X	X
Camden County Div of Fire	04281	*	X	X
Magnolia Boro Fire Co	04291	X	X	X
Brooklawn Boro Fire Co	04344	X	X	*
Laurel Springs Fire Dept	04602			
Clementon Fire Dept	04611	X	*	X
Pine Hill Fire Dept	04620	X	X	X
Lindenwold Boro Fire Co #1	04631	X	X	X
Lindenwold Fire Co #2	04632	X	X	X
Lindenwold Fire Co #3	04633	X	X	
Stratford Fire Dept	04641	X	X	X
Somerdale Fire Dept	04652	X	*	X
Voorhees Fire Dist	04663	X	X	X



FD NAME	FDID	2003	2002	2001
Gibbsboro Fire Co #1	04681	X	X	X
Hi-Nella Fire Co #1	04691	X	X	X

CAPE MAY COUNTY

FD NAME	FDID	2003	2002	2001
Ocean City Fire Dept	05001	X	X	X
North Wildwood City Fire Dept	05002	X	X	X
City of Wildwood Fire Dept	05003	X	X	X
Wildwood Crest Fire Co #1	05004	X	X	X
Cape May City Fire Dept	05005	X		X
Strathmere Vol Fire Co	05009	X	X	X
Sea Isle City Fire Dept	05010	X		
Avalon Boro Vol Fire Dept	05011	*	*	*
Stone Harbor Vol Fire Co #1	05013	X	X	X
Marmora Volunteer Fire Co	05015	X	X	X
Ocean View Vol Fire Co Inc	05017	X	X	X
Seaville Vol Fire Rescue	05019	*	X	X
West Wildwood Vol Fire Co	05021	X	X	X
West Cape May Vol Fire Co	05057	*	X	X
Cape May Point Vol Fire Co #1	05058	X	X	X
U.S. Coast Guard Fire Dept	05059	X	X	X
Villas Vol Fire Co	05060	X	X	X
Town Bank Vol Fire Co	05061	X	X	X
Erma Vol Fire Co	05062	X	X	X
Middle Twp Vol Fire Co #1	05071	X	X	X
Rio Grande Vol Fire Co	05072	X	X	X
Green Creek Vol Fire Co	05073	X	*	X
Goshen Vol Fire Co	05074	X	X	X
Woodbine Vol Fire Co	05161	*	*	X
Dennis Twp Vol Fire Co	05162	X	X	X
Tuckahoe Vol Fire Co	05163	X	X	*
Belleplaine Vol Fire Co	05164	X	X	X

CUMBERLAND COUNTY

FD NAME	FDID	2003	2002	2001
Vineland Fire Dept	06011	X	X	X
Bridgeton Fire Dept	06070	X	X	X
Port Norris Fire Dept	06110	X		
Mauricetown Fire Dept	06120			X
Laurel Lake Vol Fire Co	06130	X	X	X
Greenwich Fire Dept	06140		X	*
Fairfield Twp Fire Co #2	06150	X	X	X
Fairton Fire Dept	06160	X	X	X
Cedarville Fire Dept	06170	X	X	X
Dividing Creek Fire Co	06180	X	X	X
Newport Fire Dept	06190	X	X	X
Fortescue Fire Co #1	06200	X	X	X
Hopewell-Stow Creek Fire Co	06210	X	X	X
Cumberland Vol Fire Co	06230			
Delmont Vol Fire Dept	06240			
Heislerville Vol Fire Co	06250	X	X	X
Leesburg Vol Fire Co #1	06260			
Port Elizabeth Fire Dept	06270			
Carmel Vol Fire Co	06280			
Rosenhayn Vol Fire Co	06290	X		
Millville Fire Dept.	06300	X	X	X
Upper Deerfield Fire Co #1	06310	*	*	X
Seabrook Fire & Rescue	06320	X	X	X

FD NAME	FDID	2003	2002	2001
Upper Deerfield Fire Co #3	06330	*	X	X
Shiloh Boro Fire Dept	06350	X	X	*

ESSEX COUNTY

FD NAME	FDID	2003	2002	2001
Belleville Fire Dept	07010	X	X	X
Bloomfield Fire Dept	07020	X	X	X
Caldwell Vol Fire Dept	07030	X		
Cedar Grove Twp Vol Fire	07040	X	X	X
East Orange Fire Dept	07050	*	X	X
Essex Fells Fire Dept	07060			
Fairfield Fire Dept	07070	X	X	X
Irvington Fire Dept	07090	X	X	X
Livingston Fire Dept	07100	X	X	X
Maplewood Fire Dept	07110	X	X	X
Millburn Twp Fire Dept	07120	X	X	X
Montclair Fire Dept	07130	X	X	X
Newark Fire Dept	07140	X	X	X
North Caldwell Fire Dept	07150		X	
Nutley Fire Dept	07160		X	
City of Orange Fire Dept	07170	X	X	X
Roseland Vol Fire Dept	07180	X	X	X
South Orange Fire Dept	07190	X	X	X
Verona Boro Fire Dept	07200	*	X	
West Caldwell Twp Fire Dept	07210		X	X
West Orange Fire Dept	07220	*	X	X

GLOUCESTER COUNTY

FD NAME	FDID	2003	2002	2001
Woodbury Fire Dept	08005	X	X	X
Westville Fire Dept	08007	X	X	X
Wenonah Fire Dept	08013	X	X	X
Woodbury Hgts Boro Fire Dept	08015	X	X	X
Gibbstown Vol Fire Co	08021	X	X	X
Woolwich Fire Dept	08025	X	X	X
Glassboro Fire Dept #1	08026	X	*	X
Pitman Fire Department	08028	X	X	X
Harrisonville Fire Co	08036			*
Clayton Vol Fire Co #1	08041		*	X
Newfield Fire Co #1	08048	X	X	
Thorofare Fire Co	08061	X		X
Verga Fire Co	08062	X	*	X
Colonial Manor Fire Assn	08063	X	X	X
Greenfields Fire Co	08066	X	*	
National Park Boro Dept #1	08081			
Deptford Fire Dept	08090	X	X	X
Washington Twp Fire Dept	08100			
Paulsboro Fire Dept	08172			X
Bridgeport Vol Fire Dept	08181	X	X	X
Repaupo Vol Fire Rescue #1	08182	*	X	X
East Greenwich Fire Dept	08191			X
Mt Royal Fire Co	08192	X	X	X
Barnsboro Vol Fire Co	08221	X	X	
Mantua Vol Fire Co #1	08222	X	X	
Centre City Vol Fire Co	08223	X	X	X
Sewell Fire Co	08224	*	X	*
Harmony Vol Fire Dept	08231	*	*	
Ewan Vol Fire Co	08232	X	X	*

* Less than six months of data submitted.



FD NAME	FDID	2003	2002	2001
Williamstown Fire Dept Co #1	08291	X	X	X
Cecil Fire Co #1 Inc	08295	X	X	X
Aura Vol Fire Co #1	08391	X	*	X
Ferrell Vol Fire Co #1	08392			
Lawns Vol Fire Co #3	08393			
Franklinville Fire Co	08431	*	X	X
Janvier Vol Fire Co	08432			
Star Cross Vol Fire Co	08433	*	X	X
Malaga Vol Fire Co	08434	X	X	X
Forest Grove Vol Fire Co	08435	X	*	X

HUDSON COUNTY

FD NAME	FDID	2003	2002	2001
Bayonne Fire Dept	09001	*	X	X
East Newark Fire Dept	09002			
Harrison Fire Dept	09004		*	*
Hoboken Fire Dept	09005	X	X	X
Jersey City Fire Dept	09006	X	X	X
Kearny Fire Dept	09007	X	X	
Secaucus Fire Dept	09009			*
North Hudson Reg FD	09013	*	X	X

HUNTERDON COUNTY

FD NAME	FDID	2003	2002	2001
Frenchtown Fire Dept	10110	X	X	X
Glen Gardner Fire Co #1	10120	X	X	X
Hampton Boro Fire Co	10130	X	X	*
High Bridge Fire Dept	10140	X	X	X
Holland Twp Vol Fire Co	10150			
Kingwood Twp Vol Fire Co	10160	X		X
Lambertville Boro Fire Dept #1	10170	X	X	
Lebanon Fire Co	10180	X	X	X
Lebanon Twp Vol Fire Dept Inc	10190	X	X	X
Raritan Twp Fire Co	10210	X	X	X
Whitehouse Station Fire Dept	10220	X	X	X
Stockton Fire Co	10230	X	X	X
Oldwick Fire Co	10240			
Pattensburg Vol Fire Co	10250	X	X	X
West Amwell Twp Fire Dept	10260	*		*
East Whitehouse Fire Dept	10310	X	X	X
Readington Vol Fire Co	10320	X	X	X
Three Bridges Vol Fire Co	10330	X	X	X
Bloomsbury Hose Fire Dept	10430	X	X	X
Califon Boro Fire Co	10440	X		X
Clinton Fire Dept	10450	X	X	*
Annandale Hose Co #1	10460	X	X	X
Sergeantsville Vol Fire Co	10470	X	*	X
Amwell Valley Fire Co	10480	X	X	X
Flemington Boro Fire Dept	10490	X	X	X
Quakertown Fire Co	10910	X	X	X
Milford Fire Co	10920	X	X	X

MERCER COUNTY

FD NAME	FDID	2003	2002	2001
Hamilton Twp Fire Dist #2	11012	X	X	X
Hamilton Twp Fire Dist #3	11013	X	X	*
Hamilton Fire Co #4	11014	X	X	X
DeCou Fire Company	11015	X	X	X
White Horse Fire Co #1	11016	X	X	*

FD NAME	FDID	2003	2002	2001
Nottingham Vol Fire Co	11017	X	X	X
Colonial Vol Fire Co	11018	X	X	X
Hamilton Twp Fire Dist #9	11019	X	X	X
Slackwood Vol Fire Co	11021	X	X	X
Lawrence Rd Fire Dept	11022	X	X	X
Lawrenceville Fire Co	11023	X	X	X
Prospect Hgts Vol Fire Co #1	11031	X	X	X
Pennington Road Fire Co	11032	X	X	X
West Trenton Vol Fire Co	11033	X	X	X
Trenton-Mercer Airport FD	11034			
Washington Vol Fire Dept	11040	X	X	X
Hightstown Eng Co #1	11041	X	X	X
East Windsor Fire Co #1	11042	X	X	X
West Windsor Twp Vol FC #1	11043		X	X
Princeton Junction Fire Dept	11044			
East Windsor Vol Fire Co #2	11046		X	X
Pennington Boro Fire Dept	11051			*
Hopewell Boro Fire Dept	11052	X	X	X
Hopewell Twp Fire Dist #1	11053	X	X	X
Princeton Fire Dept	11060	X	*	X
Trenton Fire Dept	11070	X	X	X

MIDDLESEX COUNTY

FD NAME	FDID	2003	2002	2001
Carteret Fire Dept	12001	X	X	X
Cranbury Twp FD	12002			
Dunellen Fire Dept	12003	X	X	X
Edison Division of Fire	12005	*	X	X
Helmetta Boro FD	12006			
Highland Park Boro FD	12007	X	X	X
Jamesburg Vol Fire Co	12008		X	X
Middlesex Fire Dept	12011	X		X
Milltown Boro Fire Dept	12012	X	X	X
New Brunswick FD	12014	*	X	
North Brunswick Co #1	12015	X	X	X
Perth Amboy Fire Dept	12016	X	X	X
Plainsboro Fire Co	12018	X	X	X
Sayreville Fire Dept	12019	X	X	X
South Plainfield VFC	12022	X	X	X
South River Fire Dept	12023	X		
Spotswood Fire Dept	12024	X	X	X
E Brunswick Twp FC	12042	X		X
Metuchen Fire Dept	12100	X	X	X
Old Bridge Vol Fire Co	12104	X	X	X
Laurence Harbor FC	12109			
Monroe Twp Fire Dept	12113	X	X	X
New Market Fire Co	12117	X	*	
Kendall Park Fire Dept	12121			*
Woodbridge Fire Dept	12125	X	X	X
South Amboy Fire Dept	12200	*	X	X
Cheesequake Vol FC	12209	X	X	*
Applegarth FD #2	12213		X	X
North Stelton VFC	12217	X		
Monmouth Junction VFD	12221	X	X	X
Port Reading Fire Dept	12225	X	*	
Brookview VFC #3	12304			
South Old Bridge VFC	12309	X	X	X
Monroe Twp Fire Dist #3	12313	X	X	X
Arbor Hose Co #1	12317	X	X	X
Kingston Vol Fire Co #1	12321	X	X	X

* Less than six months of data submitted.



FD NAME	FDID	2003	2002	2001
Iselin Hook/Ladder 11	12325	X	*	*
Madison Park Fire Dist #4	12409	X	X	X
River Road Fire Co	12417	X	X	X
Keasbey Fire Dept	12425	X	X	X
Holmes Marshall VFC	12517			
Avenel Fire Dist #5	12525	X	X	X
Poossumtown VFC#2	12617	*	*	*
Colonia Hook/Ladder	12625	X	X	X
Fords Fire Co #7	12725	X	X	X
Hopelawn Engine #1	12825	X	X	X
Iselin Vol Fire Co #1	12925			*
Princeton Plasma Phys. Lab FD	12066	X		

MONMOUTH COUNTY

FD NAME	FDID	2003	2002	2001
Allenhurst Fire Dept	13010			
Hope Fire Co #1	13020	X	X	
Asbury Park Fire Dept	13030		*	X
Tinton Falls Fire Co	13036		*	
Pinebrook Fire Co	13037			
North Side Engine Co #4	13038			
Colts Neck Vol Fire Dept	13040	X	X	X
West Keansburg Fire Co	13041			
Hazlet Twp Fire Dept	13042	X	*	
Atlantic Highlands Fire Dept	13050	X	X	X
Avon By The Sea Fire Dept	13060			
Belmar Boro Fire Dept	13070	X	*	*
Bradley Beach Vol Fire Dept	13080	*	X	X
Brielle Fire Co #1	13090			
Deal Fire Co #2	13100		X	X
Eatontown Fire Dept	13110	*		*
Englishtown Fire Dept	13120	X	X	X
Fair Haven Boro Fire Dept	13130			
Farmingdale Fire Dept #1	13140	X	X	X
Freehold Boro Fire Dept	13150	X	*	*
East Freehold Fire Co	13160	X	X	X
Independent Fire Co #1	13161			
Highlands Fire Department	13170	X	X	X
Holmdel Fire Co #1	13181	X	X	X
Howell Twp Fire Dist #1	13191	*		X
Adelphia Fire Co	13192	X	X	X
Southard Fire Dept	13193	X	X	X
Ramtown-Howell Fire Co #2	13194	*	*	X
Freewood Acres Fire Co	13195		X	X
Keansburg Fire Dept	13210			*
Keyport Fire Dept	13220	*	*	
Little Silver Fire Dept	13230	X	X	X
Long Branch Fire Dept	13250	X	X	X
Manalapan Twp Fire Co #1	13261			
Gordons Corner Fire Co	13260	X	X	X
Manasquan Fire Dept	13270			
Marlboro Vol Fire Co	13281	X	X	X
Robertsville Fire Co #1	13282	*		*
Morganville Vol Fire Co#1	13283	X	X	X
Matawan Vol Fire Dept	13290			
Aberdeen Twp Hose/Chem #1	13301	X	X	X
Cliffwood Vol #1	13302	X	X	X
Middletown Twp Fire Dept	13310		*	X
Millstone Twp Fire Co	13320	X	X	X
Monmouth Beach Fire Dept	13330	X	X	X

FD NAME	FDID	2003	2002	2001
Neptune Twp Fire Bureau	13340	X	X	*
Ocean Grove Fire Dept	13341	X		
Neptune City Fire Dept	13350	X		
Oakhurst Fire Dept	13371	X	X	X
Wanamassa Fire Co #1	13372	X	X	X
Oceanport Fire Dept	13380	X	X	*
Red Bank Fire Dept	13400	X	X	X
Roosevelt Vol Fire Dept	13410			
Rumson Boro Fire Dept	13420	X	X	X
Sea Bright Boro Fire Dept	13430			
Sea Girt Fire Co #1	13440	X	X	*
Shrewsbury Hose Co #1	13450			
South Belmar Fire Co #1	13470			
Spring Lake Boro Fire Dept	13480	*	X	
Independent Fire Co #1	13490	X	X	X
Union Beach Boro Fire Dept	13500			
Wall Fire Co #1	13521	*	X	X
Glendola Fire Co #1	13522	X	X	X
South Wall Fire Co #3	13523	X	X	X
West Long Branch Fire Dept	13530			
Wayside Fire Co	13035			
Hazlet Fire Co #1	13039	X	X	X

MORRIS COUNTY

FD NAME	FDID	2003	2002	2001
Town of Boonton Fire Dept	14010	X	X	
Boonton Twp Fire Dept	14020		*	
Butler Fire Dept	14030		X	X
Fairmount Fire Co #1	14034	X	X	X
Chatham Boro Fire Dept	14040	X		
Green Village Vol Fire Dept	14041			
Chatham Twp Vol Fire Dept	14050	X	*	X
Chester Vol Fire Co #1	14060			
Denville Vol Fire Dept	14080	X	*	X
Dover Fire Dept	14090	X	X	X
Morristown Aircraft Rescue	14099	*	X	X
East Hanover Fire Dept	14100	X	X	X
Florham Park Vol Fire Dept	14110	X	X	X
Whippany Fire Dept	14122	X	X	X
Cedar Knolls Fire District	14123		X	*
New Vernon Vol Fire Dept	14130	X	X	X
Jefferson Twp Fire Co #2	14140	X	X	X
Kinnelon Vol Fire Co	14150	X	X	X
Lincoln Park Boro Fire Dept	14160	X	X	
Madison Fire Dept	14170	X	X	X
Mendham Boro Fire Dept	14180	X	X	X
Brookside Twp Fire Dept	14190			
Mendham Twp Fire Dept	14191			
Mine Hill Fire Department	14200	X	X	X
Pine Brook Vol Fire Dept	14210	X	X	X
Towaco Vol Fire Dept	14211	X	X	X
Montville Fire Department	14212			
Morris Twp Fire Dept	14220	X	X	X
Morris Plains Fire Dept	14230	X	X	X
Morristown Twp Fire Dept	14240	X	*	*
Mountain Lakes Fire Dept	14250	X	X	X
Mt Arlington Fire Dept	14260			
Flanders Fire & Rescue	14270			
Budd Lake Fire Dept	14271	X	X	
Netcong Fire Dept	14280	*	*	X
Mt Tabor Fire Dept	14291	X	X	X

* Less than six months of data submitted.



FD NAME	FDID	2003	2002	2001
Rainbow Lakes Vol Dist #2	14292	X	X	X
Lake Parsippany Vol Co #3	14293	X	X	X
Lake Hiawatha Vol Fire Dept	14294	X	X	X
Parsippany Troy Hills Dept #5	14295	X	X	
Parsippany Troy Hill Dist #6	14296	X	X	
Millington Vol Fire Co	14300	X	X	
Stirling Vol Fire Co #1	14301	X	X	
Pequannock Twp Fire Dept	14310	X	X	X
Randolph Twp Fire Dept	14320	X	X	X
Riverdale Fire Dept	14330	X	X	X
Rockaway Boro Fire Dept	14340	X	X	X
Rockaway Twp Fire Dept	14350	X	X	X
Roxbury Twp Fire Dept	14360	X	X	X
Victory Gardens Fire Dept	14370			
Long Valley Vol Fire Co	14380	*	X	X
Schooley's Mountain Fire Co	14381	X		X
Wharton Fire Dept	14390	X	*	X
Greystone Park Fire Dept	14400	*		X

OCEAN COUNTY

FD NAME	FDID	2003	2002	2001
Lakewood Fire Dept	15006			
Barneгат Fire Co #1	15011	X	X	X
Pinewood Estates Fire Dept	15012			*
Barneгат Light Vol Fire Co	15013			
Bay Head Fire Co #1	15014		*	
Beach Haven Vol Fire Co #1	15015	*		
Beachwood Vol Fire Co #1	15016	X	X	X
Bayville Vol Fire Co	15017	X	X	X
Manitou Park Vol Fire Co	15018	X	X	X
Pinewald Pioneer Vol Fire Co	15020	X	X	X
Twp of Brick Fire Dist #1	15021	X	X	X
Pioneer Hose Co #1	15022	X	X	X
Brick Twp Fire Dist #2	15023	X	X	X
Herbertsville Fire Co #1	15024	X	X	X
Dover Twp Fire Dept	15025	*	*	X
Manchester Vol Fire Co #1	15032	X	X	
Whiting Vol Fire Co #1	15033	X	X	X
Ridgeway Vol Fire Co #1	15034	X	*	X
Mantoloking Fire Co #1	15035			
Waretown Vol Fire Co #1	15036	X	X	X
Ocean Gate Vol Fire Co	15037	X	X	X
Pine Beach Fire Dept	15038	X	X	X
New Egypt Fire Co #1	15039			X
Point Pleasant Boro Co #1	15040	X	X	X
Point Pleasant Beach Fire Co	15042	X	X	X
Seaside Heights Fire Dept	15044	X	X	*
Seaside Park Vol Fire Dept	15045	X	X	X
Ship Bottom Vol Fire Co	15046	X	X	X
Stafford Twp Fire Co #1	15047	X	X	X
Warren Grove Fire Co	15048			
Surf City Vol Fire Co #1	15049	X		X
Tuckerton Fire Co #1 Inc	15050	X	X	X
High Point Vol Fire Co	15051			
Eagleswood Fire Co	15052	X	X	X
Island Heights Vol Fire Co	15053	*		
Jackson Mills Vol Fire Co	15054	X	X	X
Jackson Twp Vol Fire Co #1	15055	X	X	X
Cassville Vol Fire Co #1	15056	X		*

* Less than six months of data submitted.

FD NAME	FDID	2003	2002	2001
Whitesville Vol Fire Co #1	15057		*	X
Bamber Lakes Fire Dept	15059	X	X	X
Forked River Fire Dept	15060	X	*	
Lanoka Harbor Fire Dept	15061	X	X	X
Lakehurst Fire Dept	15062			
Lavallette Fire Co #1	15069	*	X	
Parkertown Fire Co	15070			X
West Tuckerton Fire Co	15071	X	X	X
Little Egg Harbor Fire Dist #2	15072			

PASSAIC COUNTY

FD NAME	FDID	2003	2002	2001
Bloomington Fire Dept	16010	X	X	
Clifton Fire Dept	16020	X	X	X
Haledon Fire Department	16030	*	X	X
Hawthorne Fire Dept	16040			
Little Falls Fire Dept	16050	X	X	X
North Haledon Vol Fire Dept	16060	X		X
Passaic Fire Dept	16070	X	X	X
Paterson Fire Dept	16080	X	X	X
Pompton Lakes Fire Dept	16090	X	*	X
Prospect Park Fire Dept	16100			X
Erskine Lakes Vol Co #1	16110	*	X	*
Ringwood Vol Fire Co #1	16111			X
Skyline Lakes Fire	16112	X	*	
Totowa Fire Dept	16120	X		
Wanaque Boro Vol Fire Dept	16130	X	X	X
Twp of Wayne Fire Dept	16140	X	X	X
Aphsawa Fire Co #1	16151	*	X	X
Community Fire Co # Inc	16152	X	X	X
Greenwood Forest Fire Co #3	16153	X	X	X
Macopin Valley Fire Co #4	16154	X	X	X
Upper Greenwood Lake Co 5	16155	*	X	X
West Milford Fire Co #6	16156	X	X	X
West Paterson Fire Dept	16160	*		X

SALEM COUNTY

FD NAME	FDID	2003	2002	2001
Alloway Twp Fire Co	17010	X	X	X
Elmer Fire Dept	17020	X	X	X
Elsinboro Fire Co	17030	X	*	
Lower Alloways Creek Fire/Res	17040			X
Pennsville Fire/Rescue #1	17051		X	X
Deepwater Fire Co	17052	X	X	X
Mannington Fire Co #1	17060	X	X	X
Logan Vol Fire Co	17071	X	X	X
Auburn Vol Fire Co	17072	X	X	*
Penns Grove Liberty #1	17080	X	X	X
Willow Grove Vol Fire Co	17101	X	X	X
Norma-Alliance Fire & Rescue	17102	X	*	
Centerton Fire Co	17103	X	X	X
Quinton Fire Co	17110		*	X
Salem City Fire Dept	17121	X	X	
Carneys Point Fire & Rescue	17130	X	X	X
Daretown Fire Co	17141	X	X	X
Monroeville VFC	17142	X	X	X
Reliance Fire Co	17150	X	X	X



SOMERSET COUNTY

FD NAME	FDID	2003	2002	2001
Far Hills-Bedminster Fire Dept	18010	X	X	X
Pottersville Vol Fire Co	18011			
Basking Ridge Fire #1	18020	X	X	X
Liberty Corner Fire Co	18021			X
Bernardsville Fire Co #1	18030	X		*
Bound Brook Fire Dept	18040	*	X	X
Neshanic Vol Fire Co	18050	X	X	X
North Branch Vol Fire Co	18051	X	X	X
Country Hills Vol Fire Co	18052			
Bradley Gardens Vol Fire Co	18060	X	X	
Finderne Fire Dept	18063	X	X	
Green Knoll Vol Fire Co	18064		X	X
Martinsville Vol Fire Dept	18065			
Millstone Valley Fire Co	18080	X	X	X
Somerset Vol Fire/Rescue #1	18081	X	X	X
Elizabeth Av Vol Fire Co	18082	X	X	X
East Franklin Twp Fire Co	18083			
Community Vol Fire Co #1	18084			
Franklin Park Fire Co #2	18085			*
Little Rocky Hill Fire Dept	18087			
Middlebush Vol Fire Dept	18088	X	X	X
Griggstown Vol Fire Co	18089			
Green Brook Vol Fire Dept	18090		X	
Hillsborough Vol Fire Co #1	18101	X	X	X
Hillsborough Fire Co #2	18102	X	X	X
Hillsborough Vol Fire Co #3	18103	X	X	X
Manville Fire Dept	18110	X	X	
Montgomery Fire Co #1	18130	X	X	X
Montgomery Fire Co #2	18131	X	*	
North Plainfield Fire Dept	18140	X	X	X
Peapack Gladstone Fire Co	18150	X	X	X
Raritan Fire Dept	18160	X	X	X
Rocky Hill Hook & Ladder #1	18170		*	X
Somerville Fire Dept	18180		X	X
South Bound Brook Co #1	18190	X	X	X
Warren Twp Vol Fire Dept	18200	X	X	X
Watchung Fire Dept	18210		X	X

SUSSEX COUNTY

FD NAME	FDID	2003	2002	2001
Andover Borough Fire Co	19010			X
Frankford Twp Fire Dept	19031	X	X	X
Branchville Hose Co #1	19032	X	X	X
Sandyston Twp Fire Dept	19033		X	X
Franklin Fire Dept	19060	X	X	X
Green Twp Vol Fire Dept	19080			X
Hamburg Boro Fire Dept	19090	X	X	X
Hampton Twp Vol Fire Dept	19100	X	X	X
Hardyston Twp Fire Dept	19110	X	X	X
Lafayette Twp Fire Dept	19130		*	X
Montague Vol Fire Dept	19140	X	X	X
Newton Fire Dept	19151	X	X	X
Stillwater Twp Fire Dept	19152	X	X	X
Swartwood Vol Fire Dept	19153	X	X	X
Fredon Vol Fire Co	19154	*	*	X
Andover Twp Fire Dept	19155	X	X	X
Ogdensburg Fire Dept	19160	X	X	X
Sparta Twp Fire Dept	19180	X	X	X
Vernon Vol. Fire Co #1	19221	X	X	X
Walpack Twp. VFD	19230			

FD NAME	FDID	2003	2002	2001
Byram Twp Fire Dept	19191	X	X	X
Stanhope Fire Dept	19192			
Hopatcong Fire Dept	19193	*	X	X
Pochuck Valley Fire Dept	19211	X	X	X
Wantage Fire Dept	19212	X	*	X
Sussex Fire Dept	19214	X	X	X
Highland Lakes Fire Dept	19222	X	X	X
Mc Afee Vol Fire Co	19223	X	X	X

UNION COUNTY

FD NAME	FDID	2003	2002	2001
Berkeley Hgts Fire Dept	20001	X	X	X
Clark Vol Fire Dept	20002			
Cranford Fire Dept	20003	X	X	X
Elizabeth Fire Dept	20004	X	X	X
Fanwood Fire Dept	20005			X
Garwood Fire Dept	20006	X	X	X
Hillside Fire Dept	20007	X	X	X
Kenilworth Fire Dept	20008	X		X
Linden Fire Dept	20009	X	X	X
Mountainside Fire Dept	20010	X	X	X
New Providence Fire Dept	20011	X	X	X
Plainfield Fire Division	20012			X
Rahway Fire Dept	20013			*
Roselle Fire Dept	20014	X	X	X
Roselle Park Fire Dept	20015		*	
Scotch Plains Fire Dept	20016	X	X	X
Springfield Fire Dept	20017	X	X	X
Summit Fire Dept	20018	X	X	X
Twp of Union Fire Dept	20019	X	X	X
Westfield Fire Dept	20020	X	X	X
Winfield Fire Dept	20021			

WARREN COUNTY

FD NAME	FDID	2003	2002	2001
Allamuchy Twp Fire Dept	21010	X	X	
Alpha Vol Fire Co	21020			
Mountain Lake Fire Co	21031	X	*	X
Good Will Fire Co #1	21032	X	X	X
Blairstown Hose Co #1	21040	X	X	
Franklin Twp Fire Co	21051	X	X	X
Asbury Fire Co #1	21058		X	X
Stewartsville Vol Fire Co	21072	X	X	X
Hackettstown Fire Dept	21081			
Tri County Fire Co	21082	X	X	X
Hope Twp Vol Fire Dept	21110			
Independence Vol Fire Co	21120			
Knowlton Twp Fire/Rescue #1	21130	*	X	X
Lopatcong Fire Dept	21150	X	X	X
Mansfield Twp Fire Co	21160	*	X	X
Mt Bethel Vol Fire Co	21171			
Oxford Vol Fire Dept	21172	X	X	X
Phillipsburg Fire Dept	21191	X	X	X
Harmony Twp Vol Fire Dept	21194			
Pohatcong Twp Fire Dept	21200	X	X	X
Washington Boro Fire Dept	21210	X	X	X
Washington Twp Vol Fire Dept	21221	X	X	X
Butler Park Vol Fire Co	21222			

* Less than six months of data submitted.





Telephone Directory - NJ Division of Fire Safety

Administration

<i>Director, Lawrence Petrillo</i>	609-633-6106
<i>Deputy Director, William Kramer</i>	609-633-6106
<i>Fiscal Services</i>	609-633-6105
<i>Office of Fire Department Preparedness</i>	609-777-3209

Legislative & Regulatory Services

<i>Supervisor</i>	609-984-1947
-------------------------	--------------

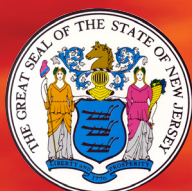
Bureau of Fire Department Services

<i>Bureau Chief</i>	609-633-6121
<i>Training & Certification</i>	609-633-6321
<i>Firefighter I Testing</i>	609-633-6122
<i>Public Education</i>	609-633-6107
<i>Fire Investigations</i>	609-633-6316
<i>NFIRS</i>	609-633-6145
<i>Publications</i>	609-633-6120
<i>Fire Equip. Contractor & Emblems Unit</i>	609-633-6737

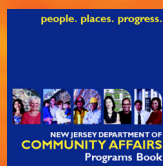
Bureau of Fire Code Enforcement

<i>Bureau Chief</i>	609-633-6110
<i>Supervisor, Local Assistance</i>	609-633-6132
<i>Inspections</i>	609-633-6132
<i>Life Hazard Unit</i>	609-633-6132

State of New Jersey
Richard J. Codey
Acting Governor



Department of Community Affairs
Susan Bass Levin, Commissioner



Division of Fire Safety
Lawrence Petrillo
Director, State Fire Marshal

