



NEW JERSEY DEPARTMENT OF
CHILDREN AND FAMILIES

Commissioner's Monthly Report November-24

Christine Beyer
Commissioner

Monthly Report

Table of Contents

TABLE OF CONTENTS	2
KEY PERFORMANCE INDICATORS	3
DCF AT A GLANCE - DASHBOARD	4
SECTION I: CHILD PROTECTION & PERMANENCY	5-7
SECTION II: ADOLESCENT SERVICES	8
SECTION III: INSTITUTIONAL ABUSE INVESTIGATION UNIT	8
SECTION IV: CHILDREN'S SYSTEM OF CARE	9
SECTION V: FAMILY & COMMUNITY PARTNERSHIPS	10
SECTION VI: DIVISION ON WOMEN	10-11
ADDENDUM 1: CASELOADS	12
ADDENDUM 2: CP&P KEY PERFORMANCE INDICATORS BY LOCAL OFFICE	13

¹Key Performance Indicators On or About September 30th, 2024

	Observed Month	Rolling 12 Month Average	Performance	% Difference
Investigation Timeliness CP&P 60 Days	July '24	82%	82%	0%
Investigation Timeliness CP&P 90 Days	July '24	94%	94%	0%
CW Visits Child 2x/Month for first 2 Months in Placement	July '24	85%	81%	-4%
CW Visits Child Monthly (at placement site) ³	September '24	93%	93%	0%
CW Visits with Parent 2x/Month - Goal of Reunification	September '24	65%	67%	2%
Parent-Child Weekly Visit ²	September '24	67%	67%	0%
Parent-Child Visits Bi-weekly	September '24	70%	75%	5%
Child Visit with Siblings	September '24	85%	82%	-3%
Initial Case Plans	September '24	90%	82%	-8%
Ongoing Case Plans	September '24	96%	96%	0%
Initial FTMs within 45 days	August '24	66%	70%	4%
Subsequent FTMs within 12 Months	September '24	71%	66%	-5%
Subsequent FTMs after 12 Months - Reunification Goal (n=21)	September '24	70%	57%	-13%
Subsequent FTMs after 12 Months - Other than Reunification Goal	September '24	83%	88%	5%
Ind. Living Assessments 14-18 Years Old	September '24	82%	83%	1%
Caseloads: Intake	September '24	91%	97%	6%
Caseloads: Permanency	September '24	100%	100%	0%
Caseloads: Adoption	September '24	99%	99%	0%
Supervisor Worker Ratio	September '24	100%	100%	0%
Investigation Timeliness IAIU 60 Days	September '24	72%	71%	-1%
Caseloads: IAIU Investigators	September '24	99%	96%	-3%
<div style="display: flex; align-items: center; margin-bottom: 5px;"> <div style="width: 20px; height: 10px; background-color: #d4edda; border: 1px solid #c3e6cb; margin-right: 5px;"></div> Performance is similar to or above the 12 months rolling average </div> <div style="display: flex; align-items: center;"> <div style="width: 20px; height: 10px; background-color: #fff3cd; border: 1px solid #ffeeba; margin-right: 5px;"></div> Performance is below the 12 months rolling average </div>				

¹ In certain measures, performance excludes appropriate instances as per policy where events such as visits or family team meetings did not occur.

² Performance for Parent-Child Weekly Visits is calculated based on the average number of children with weekly visits over the average total number of eligible children for weekly visits.

³ Caseworker visits with Children in Placement (all locations) **September 2024: 97%.**



DCF At A Glance Dashboard

On or About September 30th, 2024

DCF At A Glance		CSOC ⁴ Quick Facts	
DCF: Total Children Served in the Month ¹	67,671	Youth Open with CSOC ⁵ (unduplicated count)	36,492
CP&P: Children/Youth Served	31,179	DD Eligible Children (unduplicated count)	13,865
Children Under 18	29,362	MRSS: Dispatches in the month	2,395
OOH Setting (<18)	2,885	MRSS: Interventions ⁶ (May 2024)	2,984
In-Home Setting (<18)	26,477	Remained in Same Living Situation	96%
Youth 18-21	1,817	Unable to Stabilize in home	1%
OOH Setting (>18)	201	Unknown (Plan not received)	3%
In-Home Setting (>18)	1,616	Care Management: Children Served	17,072
FCP: Total Clients Served ² (August)	8,115	OOH Settings : Children Served ⁷ (BH, I/DD, and SU)	1,036
DOW: Total Clients Served (August) (Excludes Displaced Homemaker)	3,588	Behavioral Health Placed out of State	0
DCF: Families Served in the Month ³	23,781	Intellectual /Developmental Disabilities Placed out of State	36
CP&P	15,762	PerformCare Calls	8,546
FCP (Family Success Centers & Home Visiting) (August)	8,019	DD Related Calls	1,951

CP&P Quick Facts		FCP & DoW Quick Facts ⁹	
Hotline Referrals	14,229	FSCs: Families Served (August 2024)	4,584
CPS Reports	37%	Home Visiting: Families Served (August 2024)	3,435
CWS Referrals	7%	SBYSP: Students Receiving Evidence-Based Prevention Programs (August 2024)	96
Number of Human Trafficking Referrals ⁸ (September 2024)	8		
Response Timeliness	98%	DV Services: Clients Served (August 2024)	2,064
Monthly Staff Contacts/Children OOH-Placement Site	93%	Residential	15%
Entries to Care	133	Non-Residential	85%
Exits from Care	93		
Subsidized Adoptions/KLG (Includes Subsidized Adoptions and subsidized KLGs)	12,000	SAARC: Clients Served (August 2024)	1,524

¹ Some children may be served by both CP&P and CSOC and are over-represented in the final count of children served in the month.

² FCP measures clients served in SBYSP and DV Services. Since Family Success Centers and Home Visitation programs report data in terms of families served, each family is assumed to have at least one client.

³ Families served by DCF includes CP&P families and FCP families. FCP families served data has a one month lag.

⁴ CSOC Children may receive multiple services and are counted multiple times.

⁵ The definition for "Youth Open with CSOC" reflects youth who are involved and eligible to receive services through CSOC.

⁶ Mobile Response Interventions has a five month lag to allow for the data to settle for accurate reporting.

⁷ As of October 2022, the CSOC OOH sections will now include all CSOC Out of Home Treatment Settings (Behavioral Health, Intellectual/Developmentally Disabled, and Substance Use). This includes updating the totals reported, a new 3-year OOH trend report, and a monthly OOH report grouped by similar treatment settings.

⁸ The cumulative number of human trafficking referrals between **November 2013 and September 2024 was 1,454**. This figure could change depending on when the data is extracted.

⁹ FCP quick facts are based on new families for FSCs, but both new and ongoing clients for Home Visiting and SBYSP. DoW quick facts are based on new clients for DV Services, but both new and ongoing clients served for SAARC, Displaced Homemakers and Rape Prevention Education.

Note: OOH Behavioral Health Settings: Children Served - Excludes Youth in Detention Alternatives and Diagnostic Settings.

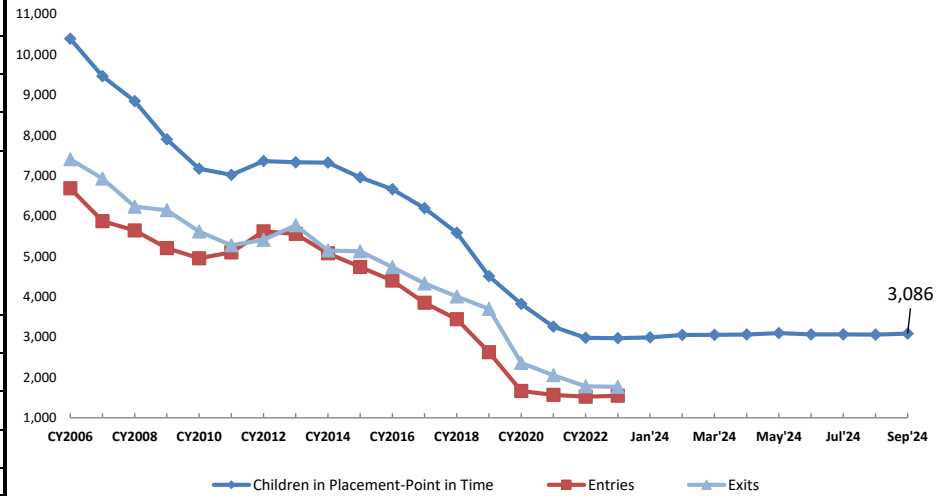
Effective June 2017, All DoW data is reported Monthly except for Residential DV shelters and Unmet Needs Data.

Note: Due to system upgrades within DCF, Displaced Homemaker data will not be available beginning November 2021. DCF will resume reporting on these data after the new systems have been updated with these data.

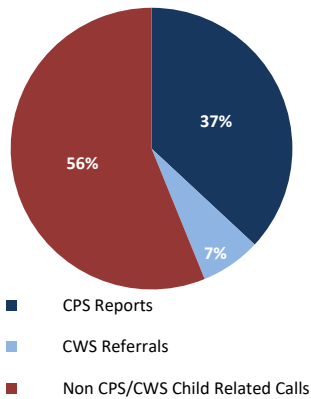
Section I: Child Protection & Permanency

CP&P Quick Facts					
				As of Sep 30th 2024	Δ from Sep '23
Families Under CP&P Supervision				15,762	-1%
Children Under CP&P Supervision				31,179	0%
Children Receiving CP&P In-Home Services				28,093	0%
Children in CP&P Out-of-Home Placement				3,086	1%
Resource Family (non-Kin)	41%	1,279			
Resource Family Kinship	46%	1,429			
Group and Residential	11%	332			
Independent Living	1%	46			
Children Legally Free for Adoption (Excludes TPR Appeals)				450	-7%
Finalized Adoptions to date (CY2024) - As of 9/30/2024				238	-11%
Children in Subsidized Kinship Legal Guardianship				1,261	0%
Children in Subsidized Adoptions				10,739	-7%
Entries to Care				133	-5%
Exits from Care				93	-18%

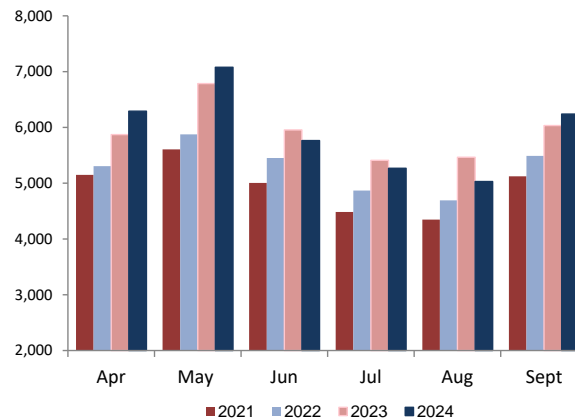
Children in Out-of-Home Placement:
Annual Entries, Exits and Monthly Point in Time Children in Placement



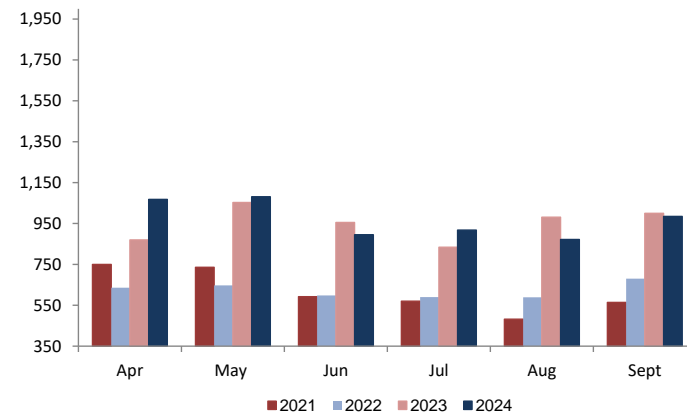
Total SCR Intakes
n = 14,229
September 2024



CPS & CWS Referrals

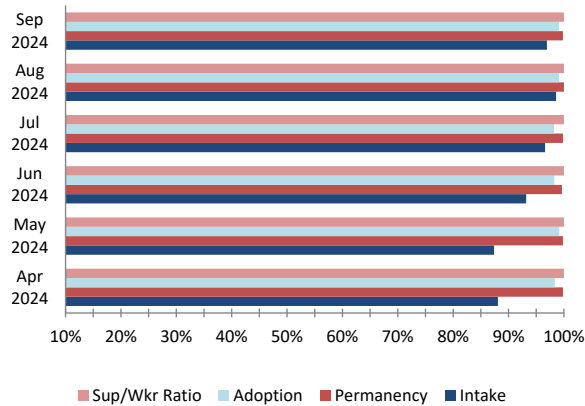


CWS Referrals Assigned to Local Offices

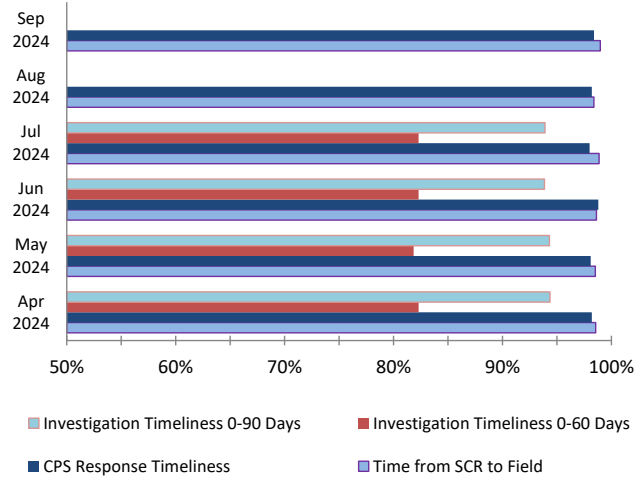


Section I: Child Protection & Permanency

**Caseload Compliance
(Individual Worker Level)**

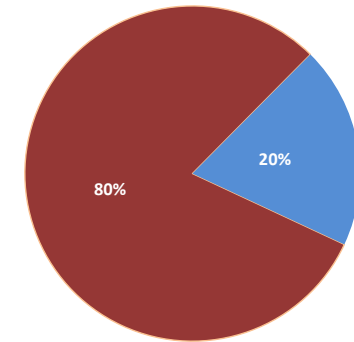


Response and Investigation Timeliness

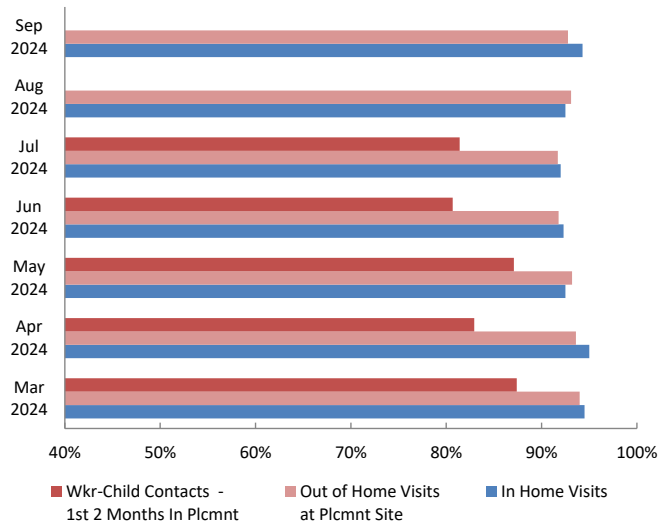


Referrals to Early Intervention

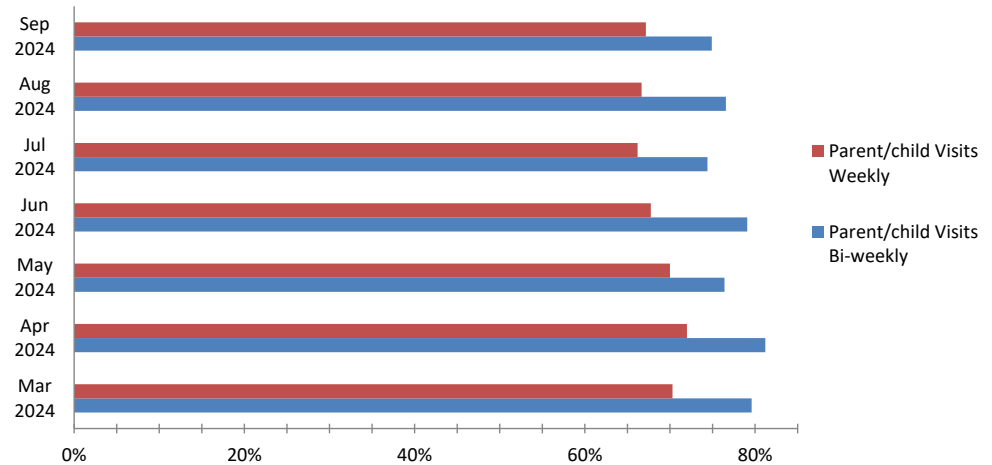
Oct 2023 - Sep 2024
n = 543



Worker - Child Visits

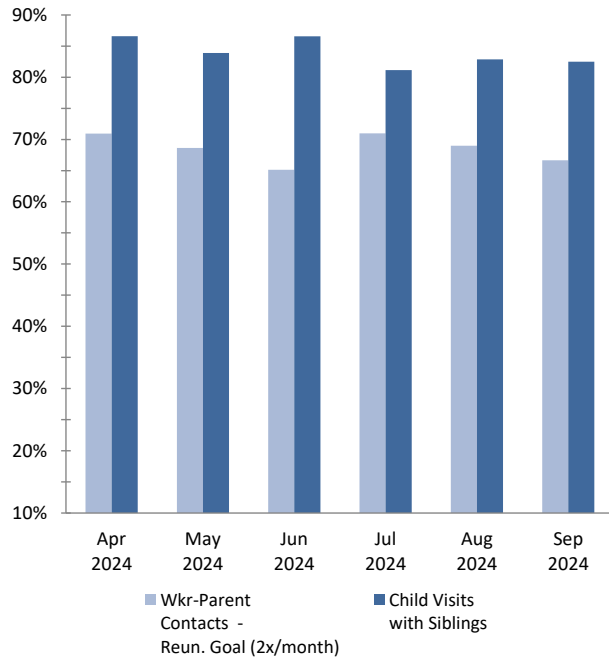


Parent - Child Visits

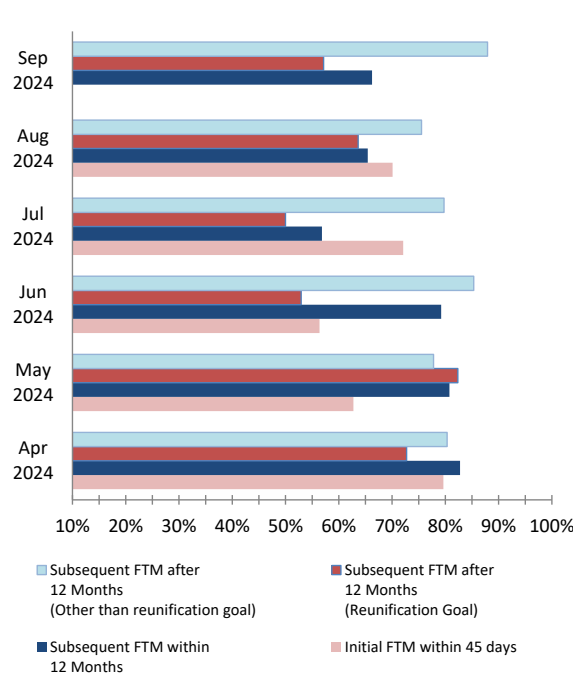


Section I: Child Protection & Permanency

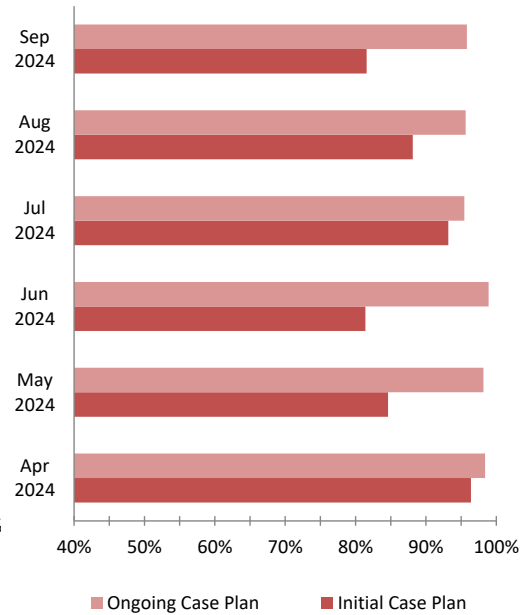
Worker- Parent Visits & Sibling Visits



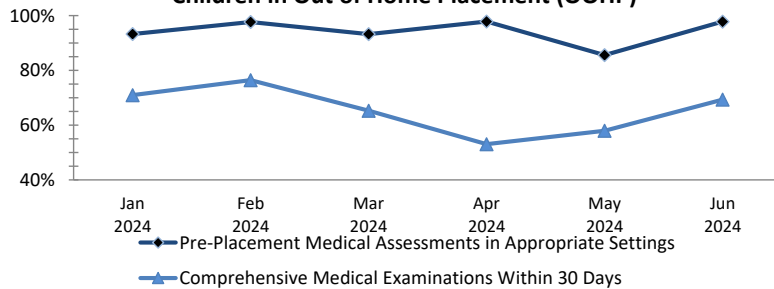
Initial & Subsequent Family Team Meetings



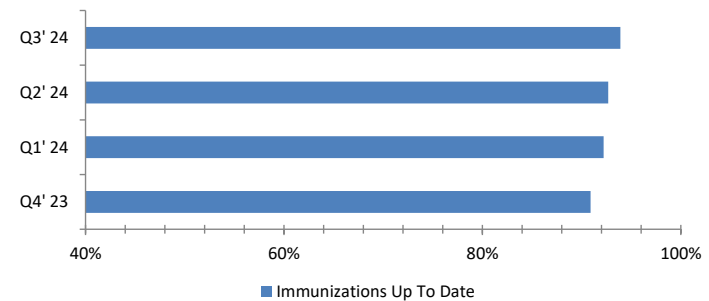
Initial & Ongoing Case Plans



Medical Assessments for
Children in Out of Home Placement (OOHP)



Immunizations for
Children in OOHP



Section II: Adolescent Services

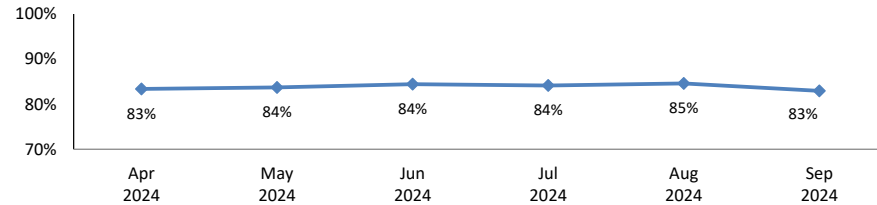
OAS Quick Facts (September 2024)
Youth 18-23

Youth 18-23 years old served by CP&P¹			1,817
Youth served "In Home" living with a parent/relative or living independently²			1,616
Youth served "Out-of-Home"			201
Resource Family (non-Kin)	(37.8%)	76	
Resource Family Kinship	(13.9%)	28	
Congregate Care Setting	(27.9%)	56	
Independent Living	(20.4%)	41	
Youth Receiving Adoption or KLG Subsidy			522

¹ The data includes all 18-21 year olds who are active participants in an open CP&P case as of the end of the month.

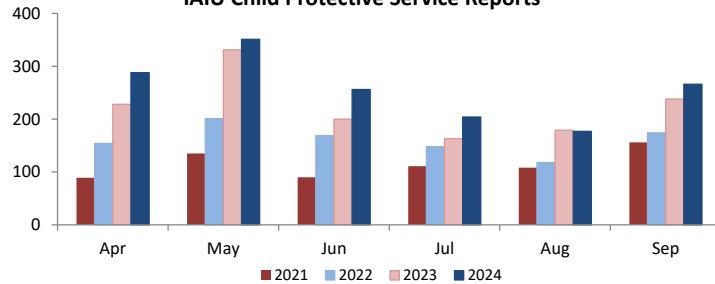
² The terms "out-of-home" and "in-home" may not be appropriate for all 18-21 year olds. Youth identified as "in-home" can either be residing with a parent/relative, or living independently. Any of these youth may be receiving services. These definitions are currently being reviewed to better understand how we capture DCF's work with this population. The goal of this ongoing work is to create three meaningful categories for 18-21 year olds 1) Youth in a formal out-of-home placement setting, 2) Youth that achieved permanency, and 3) Youth that never achieved permanency.

Completed Independent Living Assessments
of Youth Ages 14-18 years

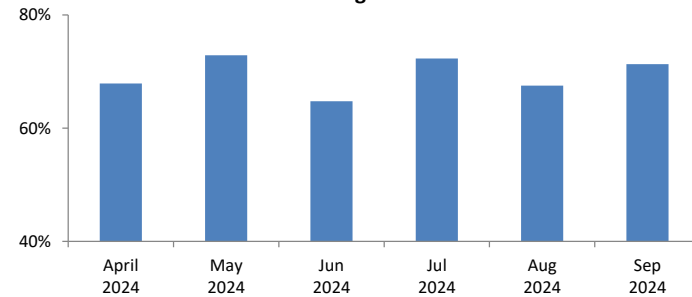


Section III: Institutional Abuse Investigation Unit

IAIU Child Protective Service Reports

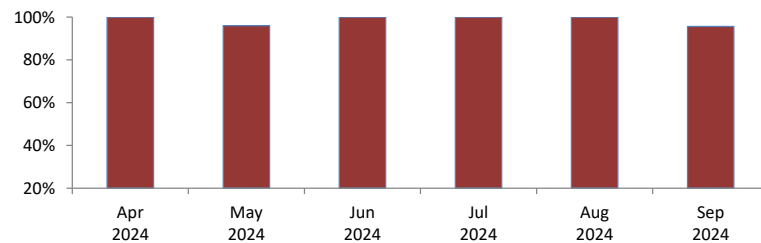


IAIU Investigation Timeliness

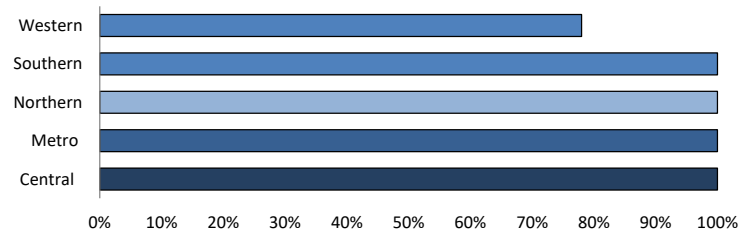


IAIU Caseload Report
Statewide

No more than 8 new investigations and 12 cases/month

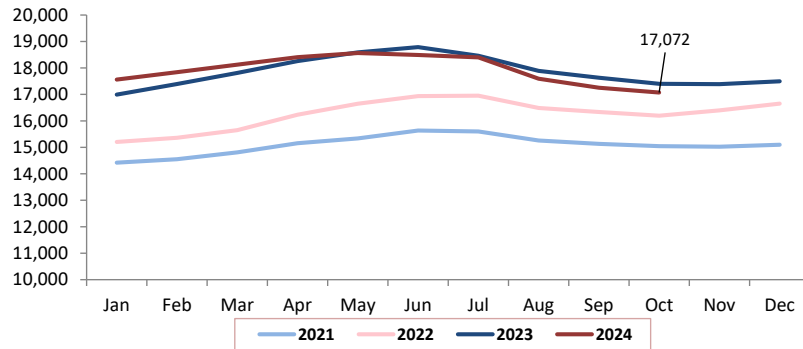


IAIU Caseload Report by Region
September 2024

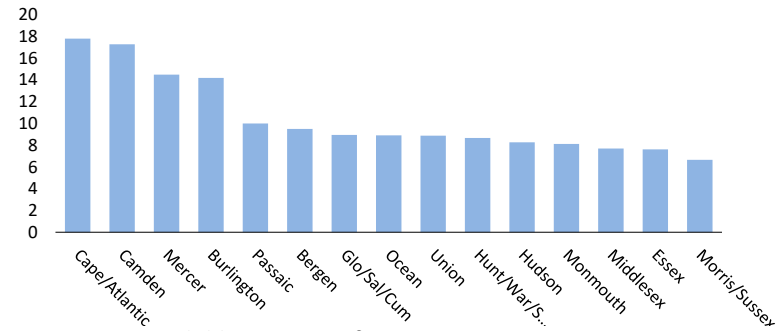


Section IV: Children's System of Care

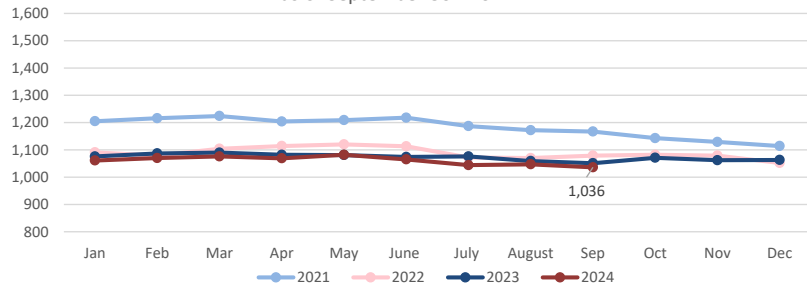
Children in Care Management
as of October 1st 2024



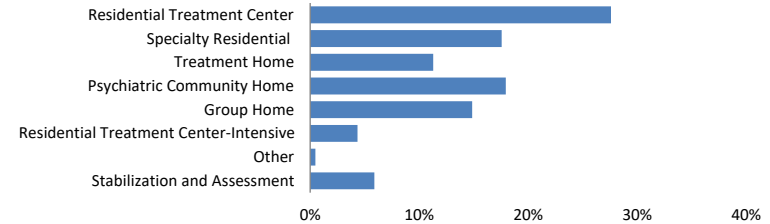
Rate of Children in Care Management by Service Area
as of October 1st 2024
n=17,072



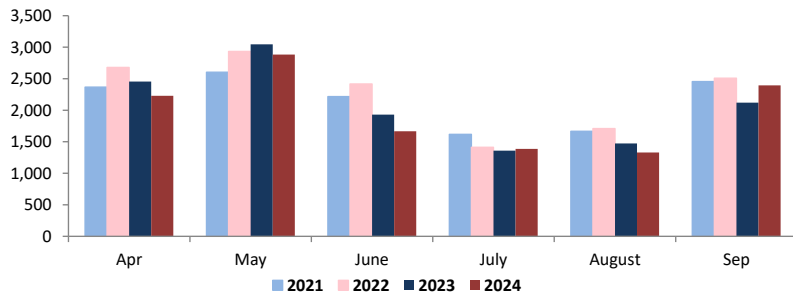
Children in Out of Home Treatment Settings
as of September 30th 2024



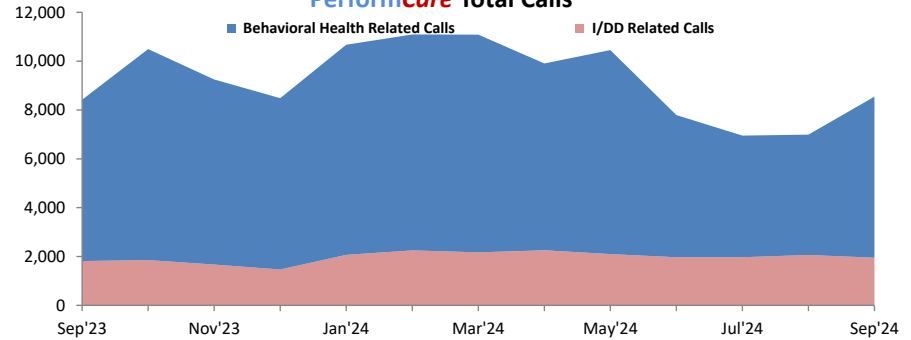
Children in Out-of-Home Treatment Settings
as of September 30th 2024
n= 1,036



Mobile Response Stabilization Services (MRSS) Dispatched

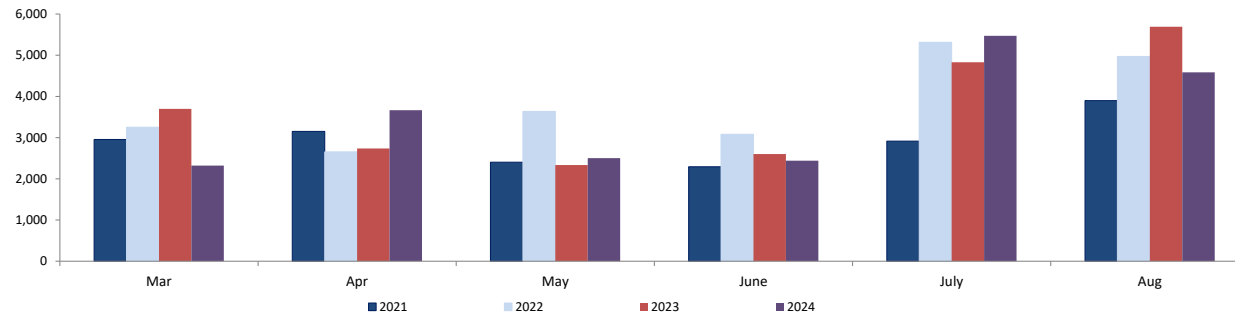


PerformCare Total Calls



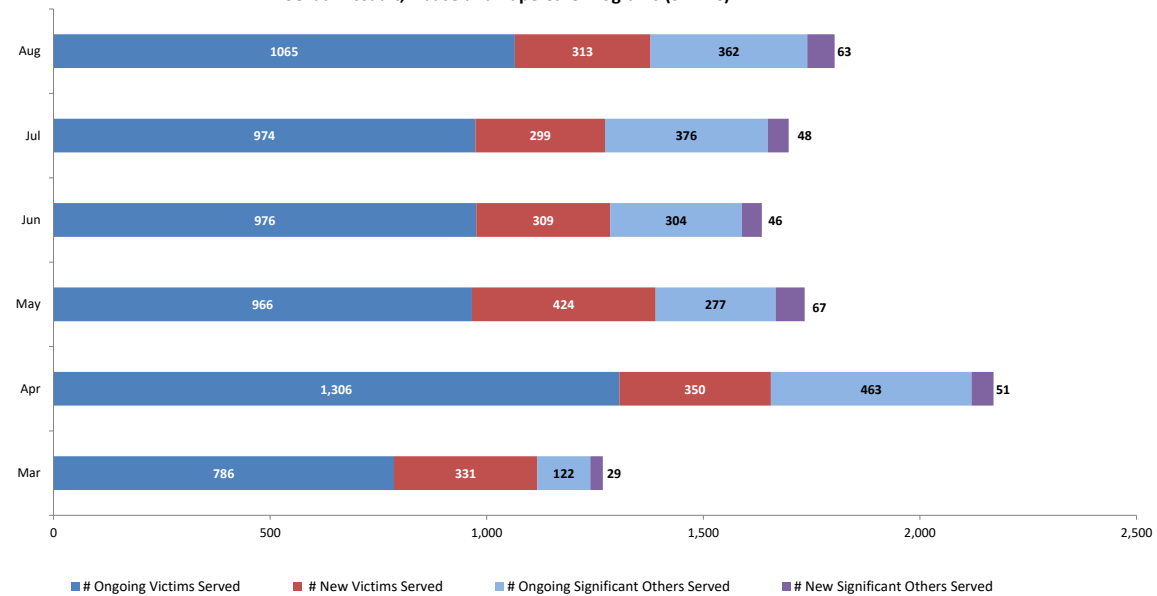
Section V: Family & Community Partnerships

Family Success Centers - Families Served



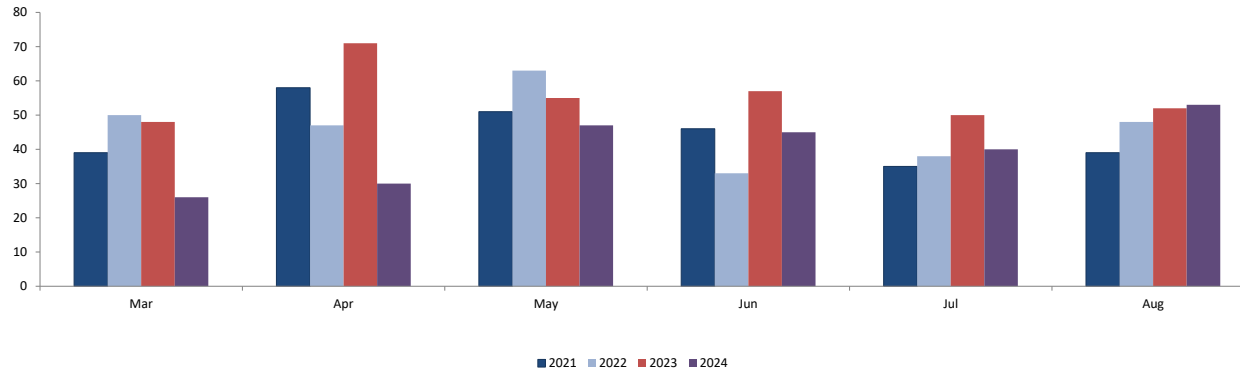
Section VI: Division of Women

Sexual Assault, Abuse and Rape Care Programs (SAARC)

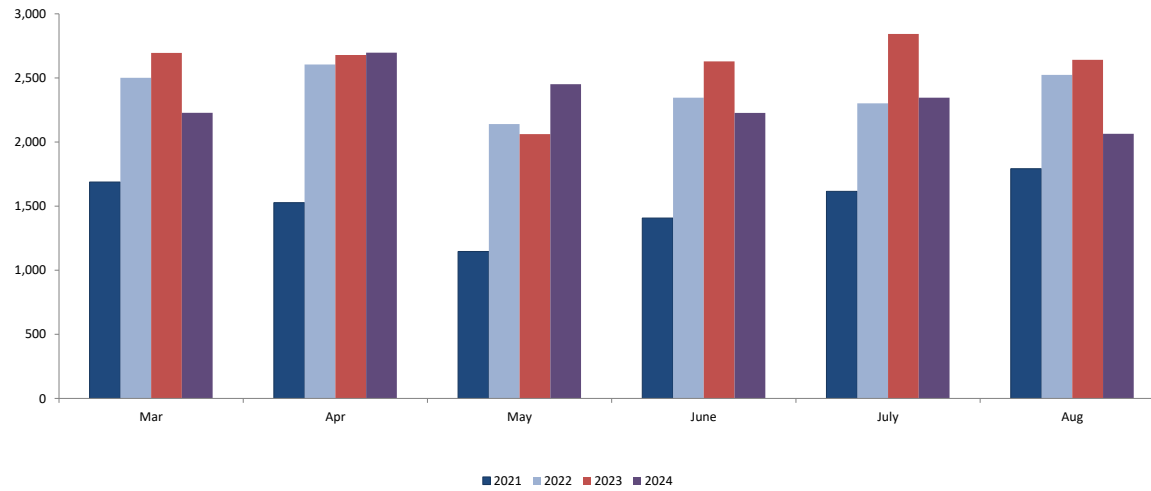


Section VI: Division on Women

**Residential Domestic Violence Programs:
Victims' Average Length of Stay (days)**



**Domestic Violence Services - Adults and Children
Admitted to Residential and Non-Residential Services
Total New Clients**



Worker and Office Caseloads by Worker Type and by Local Office - September 2024

Local Office	<div><div></div> At or Above Statewide Performance</div>		<div><div></div> Below Statewide Performance</div>			
	¹ Intake		² Permanency		³ Adoption	
	Worker Compliance	Office Compliant? Yes/No	Worker Compliance	Office Compliant? Yes/No	Worker Compliance	Office Compliant? Yes/No
Atlantic East	100%	Yes	100%	Yes	100%	Yes
Atlantic West	100%	Yes	100%	Yes	100%	Yes
Bergen Central	100%	Yes	100%	Yes	100%	Yes
Bergen South	94%	Yes	100%	Yes	100%	Yes
Burlington East	100%	Yes	100%	Yes	100%	Yes
Burlington West	86%	No	94%	No	100%	Yes
Camden Central	76%	No	100%	Yes	100%	Yes
Camden East	72%	No	100%	Yes	100%	Yes
Camden North	100%	Yes	100%	Yes	100%	Yes
Camden South	100%	Yes	100%	Yes	100%	Yes
Cape May	100%	Yes	100%	Yes	100%	Yes
Cumberland East	93%	Yes	100%	Yes	100%	Yes
Cumberland West	100%	Yes	100%	Yes	100%	Yes
Essex Central	100%	Yes	100%	Yes	100%	Yes
Essex North	95%	Yes	100%	Yes	100%	Yes
Essex South	94%	Yes	100%	Yes	100%	Yes
Gloucester East	88%	No	100%	Yes	100%	Yes
Gloucester West	100%	Yes	100%	Yes	100%	Yes
Hudson Central	100%	Yes	100%	Yes	100%	Yes
Hudson North	100%	Yes	100%	Yes	100%	Yes
Hudson South	100%	Yes	100%	Yes	100%	Yes
Hudson West	100%	Yes	100%	Yes	100%	Yes
Hunterdon	100%	Yes	100%	Yes	100%	Yes
Mercer North	90%	Yes	100%	Yes	100%	Yes
Mercer South	100%	Yes	100%	Yes	100%	Yes
Middlesex Central	88%	No	100%	Yes	100%	Yes
Middlesex Coastal	100%	Yes	100%	Yes	100%	Yes
Middlesex West	100%	Yes	100%	Yes	100%	Yes
Monmouth North	100%	Yes	100%	Yes	100%	Yes
Monmouth South	100%	Yes	100%	Yes	100%	Yes
Morris East	100%	Yes	100%	Yes	100%	Yes
Morris West	94%	Yes	100%	Yes	100%	Yes
Newark Center City	100%	Yes	100%	Yes	100%	Yes
Newark Northeast	100%	Yes	100%	Yes	100%	Yes
Newark South	100%	Yes	100%	Yes	100%	Yes
Ocean North	100%	Yes	100%	Yes	100%	Yes
Ocean South	100%	Yes	100%	Yes	100%	Yes
Passaic Central	100%	Yes	100%	Yes	100%	Yes
Passaic North	97%	Yes	100%	Yes	67%	No
Salem	92%	Yes	100%	Yes	100%	Yes
Somerset	100%	Yes	100%	Yes	100%	Yes
Sussex	100%	Yes	100%	Yes	100%	Yes
Union Central	89%	No	100%	Yes	100%	Yes
Union East	100%	Yes	100%	Yes	100%	Yes
Union West	100%	Yes	100%	Yes	100%	Yes
Warren	100%	Yes	100%	Yes	100%	Yes
Statewide ⁴	97%	Yes	100%	Yes	99%	Yes

1 Intake

- Intake worker compliance: % of workers with no more than 8 new intakes in the month, no more than 12 Primary families and no more than a total of 14 families.
- Office Compliance: % of offices that meet the caseload standards of no more than 8 new intakes and 12 total families.

2 Permanency

- Permanency worker compliance: % of workers who meet the caseload standards of no more than 15 families and 10 children in placement.
- Office Compliance: % of offices that meet the caseload standards of no more than 15 families and 10 children in placement.

3 Adoption

- Adoption worker compliance: % of adoption workers who meet the caseload standards of 15 or fewer children.
- Office Compliance: % of offices that meet the caseload standards of 15 or fewer children.
- Offices with blank data do not carry adoption caseloads, however adoption cases in those offices are handled by other offices in that area.

4 Statewide

- Performance is based on total workers in compliance for the month, not an average. Percentages are rounded to the whole number.

CP&P Key Performance Indicators by Local Office - 6 Months View

Local Office	CPS Investigations Completed w/ 60 Days	CPS Investigations Completed w/ 90 Days	Monthly Staff Visits w/Children in Placement	Visits w/Children in Placement 2x/Month for 2 Months	Visits with Parents of Children in Placement 2x/Month	Weekly Parent/Child Visits-Children with Goal of Reunification	Bi-weekly Parent-Child Visits-Children with Goal of Reunification	Monthly Sibling Visits	Initial Case Plans w/ 30 Days of Placement	6 Months Review of Case Plans for Children in Placement	Initial Family Team Meetings w/ 45 days of Placement	3 Family Team Meetings in the first 12 months of Placement	3 Family Team Meetings after 12 months in Placement	2 Family Team Meeting after 12 months in Placement
Atlantic East	89%	97%	96%	82%	69%	61%	73%	74%	100%	99%	71%	75%	57%	93%
Atlantic West	87%	96%	95%	100%	62%	87%	81%	64%	80%	97%	73%	88%		83%
Bergen Central	94%	98%	98%	100%	85%	91%	89%	72%	100%	100%	86%	100%		100%
Bergen South	84%	94%	98%	80%	64%	55%	68%	86%	100%	100%	63%	75%	50%	69%
Burlington East	84%	95%	98%	88%	77%	58%	72%	91%	100%	95%	89%	70%	0%	100%
Burlington West	69%	91%	87%	58%	68%	72%	80%	86%	95%	99%	24%	3%	0%	33%
Camden Central	79%	93%	87%	91%	79%	68%	81%	84%	85%	98%	60%	50%	70%	100%
Camden East	71%	88%	92%	81%	64%	64%	76%	80%	84%	94%	70%	86%		86%
Camden North	76%	93%	96%	76%	75%	66%	76%	91%	100%	100%	47%	53%	100%	100%
Camden South	74%	97%	93%	89%	73%	61%	76%	95%	86%	94%	56%	85%	80%	88%
Cape May	89%	96%	95%	70%	64%	47%	75%	83%	100%	100%	65%	83%	100%	100%
Cumberland East	64%	85%	91%	100%	87%	79%	88%	96%	95%	100%	94%	100%		92%
Cumberland West	64%	93%	98%	100%	82%	85%	88%	94%	100%	100%	73%	100%		100%
Essex Central	85%	95%	93%	78%	69%	57%	75%	92%	100%	100%	67%	83%	75%	63%
Essex North	88%	95%	98%	92%	69%	51%	70%	55%	100%	100%	50%	0%	0%	75%
Essex South	84%	95%	94%	66%	45%	35%	61%	88%	96%	100%	52%	63%	100%	100%
Gloucester East	92%	98%	95%	97%	53%	66%	74%	81%	70%	87%	71%	69%	25%	83%
Gloucester West	80%	94%	94%	96%	70%	76%	80%	95%	63%	100%	92%	100%	100%	100%
Hudson Central	77%	90%	93%	72%	81%	73%	86%	83%	71%	96%	92%	50%	50%	57%
Hudson North	80%	96%	99%	100%	97%	92%	95%	71%	50%	100%	50%		0%	100%
Hudson South	86%	93%	90%	63%	54%	28%	61%	80%	100%	90%	0%		0%	75%
Hudson West	86%	97%	94%	80%	99%	97%	82%	88%	63%	100%	86%	50%	0%	44%
Hunterdon	91%	96%	100%	100%	100%	78%	100%	100%	100%	100%	50%			0%
Mercer North	70%	91%	92%	83%	64%	51%	78%	65%	92%	85%	59%	37%	50%	81%
Mercer South	80%	93%	98%	70%	54%	65%	63%	75%	100%	100%	69%	60%	50%	77%
Middlesex Central	67%	89%	95%	87%	70%	60%	80%	82%	75%	100%	86%	100%	0%	0%
Middlesex Coastal	85%	96%	94%	64%	81%	70%	79%	85%	100%	95%	60%	63%	63%	44%
Middlesex West	78%	92%	93%	82%	53%	76%	79%	82%	100%	100%	86%	100%	100%	75%
Monmouth North	97%	99%	94%	86%	68%	73%	83%	98%	95%	100%	30%	86%		40%
Monmouth South	93%	98%	95%	87%	69%	69%	76%	80%	100%	96%	82%	92%	100%	90%
Morris East	86%	97%	93%	100%	97%	100%	94%	98%	100%	100%	95%	88%		
Morris West	90%	98%	96%	88%	92%	100%	94%	98%	100%	100%	100%		100%	89%
Newark Center City	87%	95%	99%	100%	87%	65%	78%	95%	100%	100%	100%	100%	100%	100%
Newark Northeast	70%	85%	82%	100%	32%	58%	64%	75%	100%	100%	55%	53%	25%	78%
Newark South	87%	93%	100%	86%	89%	51%	75%	95%	100%	100%	73%	100%	100%	100%
Ocean North	93%	97%	98%	100%	72%	70%	82%	91%	85%	93%	31%	80%	100%	100%
Ocean South	95%	98%	94%	88%	71%	64%	82%	87%	100%	99%	53%	80%	60%	67%
Passaic Central	90%	97%	97%	100%	79%	100%	78%	86%	100%	100%	93%	100%	100%	100%
Passaic North	92%	97%	95%	100%	90%	99%	90%	97%	100%	100%	93%	100%	100%	100%
Salem	62%	83%	97%	95%	88%	77%	83%	91%	100%	100%	92%	100%		100%
Somerset	82%	95%	80%	65%	63%	70%	86%	99%	100%	100%	67%	100%		33%
Sussex	97%	98%	98%	100%	90%	100%	92%	87%	100%	100%	100%	100%		100%
Union Central	71%	91%	97%	100%	59%	96%	82%	100%	100%	100%	100%	100%		85%
Union East	93%	97%	97%	100%	71%	71%	81%	89%	78%	100%	100%	55%		57%
Union West	72%	95%	90%	82%	67%	78%	85%	76%	100%	100%	83%	42%	100%	36%
Warren	55%	84%	84%	58%	47%	43%	69%	77%	90%	90%	22%	67%		100%
Statewide	83%	94%	94%	86%	71%	67%	78%	86%	92%	97%	69%	71%	63%	81%

Blank cells mean that the office did not have any children eligible for that measure during that period.

Description of the Measure	Time Period Analyzed
CPS Investigations Completed w/ 60 Days	February 24 - July 24
CPS Investigations Completed w/ 90 Days	February 24 - July 24
Monthly Staff Visits w/Children in Placement	April 24 - September 24
Visits w/Children in Placement 2x/Month for 2 Months	February 24 - July 24
Visits with Parents of Children in Placement 2x/Month	April 24 - September 24
Weekly Parent/Child Visits-Children with Goal of Reunification	8/24/2024 - 9/28/2024
Bi-weekly Parent-Child Visits-Children with Goal of Reunification	April 24 - September 24
Monthly Sibling Visits	April 24 - September 24
Initial Case Plans w/ 30 Days of Placement	April 24 - September 24
6 Months Review of Case Plans for Children in Placement	April 24 - September 24
Initial Family Team Meetings w/ 45 days of Placement	March 24 - August 24
3 Family Team Meetings in the first 12 months of Placement	April 24 - September 24
3 Family Team Meetings after 12 months in Placement	April 24 - September 24
2 Family Team Meeting after 12 months in Placement	April 24 - September 24