



NEW JERSEY DEPARTMENT OF  
CHILDREN AND FAMILIES

## Commissioner's Monthly Report May-25

Christine Beyer  
Commissioner

## Monthly Report

### Table of Contents

<b>TABLE OF CONTENTS</b>	<b>2</b>
<b>KEY PERFORMANCE INDICATORS</b>	<b>3</b>
<b>DCF AT A GLANCE - DASHBOARD</b>	<b>4</b>
<b>SECTION I: CHILD PROTECTION &amp; PERMANENCY</b>	<b>5-7</b>
<b>SECTION II: ADOLESCENT SERVICES</b>	<b>8</b>
<b>SECTION III: INSTITUTIONAL ABUSE INVESTIGATION UNIT</b>	<b>8</b>
<b>SECTION IV: CHILDREN'S SYSTEM OF CARE</b>	<b>9</b>
<b>SECTION V: FAMILY &amp; COMMUNITY PARTNERSHIPS</b>	<b>10</b>
<b>SECTION VI: DIVISION ON WOMEN</b>	<b>10-11</b>
<b>ADDENDUM 1: CASELOADS</b>	<b>12</b>
<b>ADDENDUM 2: CP&amp;P KEY PERFORMANCE INDICATORS BY LOCAL OFFICE</b>	<b>13</b>

<sup>1</sup>Key Performance Indicators  
On or About March 31<sup>st</sup>, 2025

	Observed Month	Rolling 12 Month Average	Performance	% Difference
Investigation Timeliness CP&P 60 Days	January '25	82%	84%	2%
Investigation Timeliness CP&P 90 Days	January '25	94%	94%	0%
CW Visits Child 2x/Month for first 2 Months in Placement	January '25	83%	80%	-3%
CW Visits Child Monthly (at placement site) <sup>3</sup>	March '25	92%	93%	1%
CW Visits with Parent 2x/Month - Goal of Reunification	March '25	67%	69%	2%
Parent-Child Weekly Visit <sup>2</sup>	March '25	67%	69%	2%
Parent-Child Visits Bi-weekly	March '25	76%	77%	1%
Child Visit with Siblings	March '25	83%	83%	0%
Initial Case Plans	March '25	89%	91%	2%
Ongoing Case Plans	March '25	96%	97%	1%
Initial FTMs within 45 days	February '25	65%	56%	-9%
Subsequent FTMs within 12 Months	March '25	66%	71%	5%
Subsequent FTMs after 12 Months - Reunification Goal (n=30)	March '25	67%	40%	-27%
Subsequent FTMs after 12 Months - Other than Reunification Goal	March '25	84%	80%	-4%
Ind. Living Assessments 14-18 Years Old	March '25	83%	82%	-1%
Caseloads: Intake	March '25	94%	94%	0%
Caseloads: Permanency	March '25	100%	100%	0%
Caseloads: Adoption	March '25	99%	99%	0%
Supervisor Worker Ratio	March '25	100%	100%	0%
Investigation Timeliness IAIU 60 Days	March '25	71%	84%	13%
Caseloads: IAIU Investigators	March '25	99%	100%	1%
<div> <div></div> Performance is similar to or above the 12 months rolling average </div> <div> <div></div> Performance is below the 12 months rolling average </div>				

<sup>1</sup> In certain measures, performance excludes appropriate instances as per policy where events such as visits or family team meetings did not occur.

<sup>2</sup> Performance for Parent-Child Weekly Visits is calculated based on the average number of children with weekly visits over the average total number of eligible children for weekly visits.

<sup>3</sup> Caseworker visits with Children in Placement (all locations) **March 2025: 98%.**

## DCF At A Glance Dashboard

On or About March 31<sup>st</sup>, 2025

DCF At A Glance		CSOC <sup>4</sup> Quick Facts	
DCF: Total Children Served in the Month <sup>1</sup>	73,160	Youth Open with CSOC <sup>5</sup> (unduplicated count)	40,247
CP&P: Children/Youth Served	32,913	DD Eligible Children (unduplicated count)	14,007
Children Under 18	31,084	MRSS: Dispatches in the month	3,278
OOH Setting (<18)	2,788	MRSS: Interventions <sup>6</sup> (November 2024)	2,412
In-Home Setting (<18)	28,296	Remained in Same Living Situation	96%
Youth 18-21	1,829	Unable to Stabilize in home	1%
OOH Setting (>18)	215	Unknown (Plan not received)	3%
In-Home Setting (>18)	1,614	Care Management: Children Served	17,670
FCP: Total Clients Served <sup>2</sup> (February)	7,075	OOH Settings : Children Served <sup>7</sup> (BH, I/DD, and SU)	1,057
DOW: Total Clients Served (February) (Excludes Displaced Homemaker)	4,257	Behavioral Health Placed out of State	0
DCF: Families Served in the Month <sup>3</sup>	22,060	Intellectual/Developmental Disabilities Placed out of State	44
CP&P	16,344	PerformCare Calls	10,710
FCP (Family Success Centers & Home Visiting) (February)	5,716	DD Related Calls	2,330

CP&P Quick Facts		FCP & DoW Quick Facts <sup>9</sup>	
Hotline Referrals	18,861	FSCs: Families Served (February 2025)	2,044
CPS Reports	30%	Home Visiting: Families Served (February 2025)	3,672
CWS Referrals	6%	SBYSP: Students Receiving Evidence-Based Prevention Programs (Feb 2025)	1,359
Number of Human Trafficking Referrals <sup>8</sup> (March 2025)	2		
Response Timeliness	98%	DV Services: Clients Served (February 2025)	2,146
Monthly Staff Contacts/Children OOH-Placement Site	93%	Residential	12%
Entries to Care	133	Non-Residential	88%
Exits from Care	125		
Subsidized Adoptions/KLG (Includes Subsidized Adoptions and subsidized KLGs)	11,989	SAARC: Clients Served (February 2025)	2,111

<sup>1</sup> Some children may be served by both CP&P and CSOC and are over-represented in the final count of children served in the month.

<sup>2</sup> FCP measures clients served in SBYSP and DV Services. Since Family Success Centers and Home Visitation programs report data in terms of families served, each family is assumed to have at least one client.

<sup>3</sup> Families served by DCF includes CP&P families and FCP families. FCP families served data has a one month lag.

<sup>4</sup> CSOC Children may receive multiple services and are counted multiple times.

<sup>5</sup> The definition for "Youth Open with CSOC" reflects youth who are involved and eligible to receive services through CSOC.

<sup>6</sup> Mobile Response Interventions has a five month lag to allow for the data to settle for accurate reporting.

<sup>7</sup> As of October 2022, the CSOC OOH sections will now include all CSOC Out of Home Treatment Settings (Behavioral Health, Intellectual/Developmentally Disabled, and Substance Use). This includes updating the totals reported, a new 3-year OOH trend report, and a monthly OOH report grouped by similar treatment settings.

<sup>8</sup> The cumulative number of human trafficking referrals between November 2013 and March 2025 was 1,489. This figure could change depending on when the data is extracted.

<sup>9</sup> FCP quick facts are based on new families for FSCs, but both new and ongoing clients for Home Visiting and SBYSP. DoW quick facts are based on new clients for DV Services, but both new and ongoing clients served for SAARC, Displaced Homemakers and Rape Prevention Education.

Note: OOH Behavioral Health Settings: Children Served - Excludes Youth in Detention Alternatives and Diagnostic Settings.

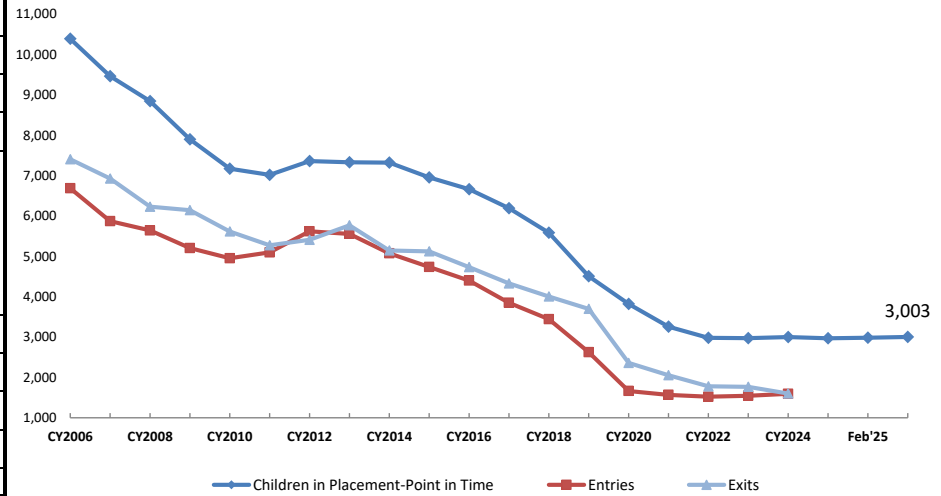
Effective June 2017, All DoW data is reported Monthly except for Residential DV shelters and Unmet Needs Data.

Note: Due to system upgrades within DCF, Displaced Homemaker data will not be available beginning November 2021. DCF will resume reporting on these data after the new systems have been updated with these data.

## Section I: Child Protection & Permanency

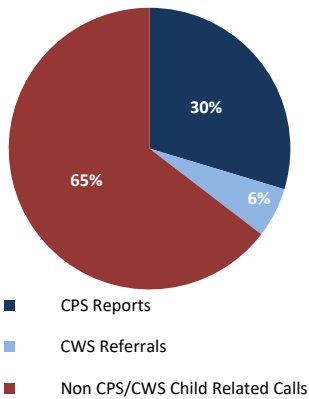
CP&P Quick Facts					
				As of Mar 31st 2025	Δ from Mar '24
Families Under CP&P Supervision				16,344	-2%
Children Under CP&P Supervision				32,913	0%
Children Receiving CP&P In-Home Services				29,910	0%
Children in CP&P Out-of-Home Placement				3,003	-2%
Resource Family (non-Kin)	39%	1,180			
Resource Family Kinship	46%	1,375			
Group and Residential	13%	402			
Independent Living	2%	46			
Children Legally Free for Adoption (Excludes TPR Appeals)				432	-2%
Finalized Adoptions to date (CY2025) - As of 03/31/2025				49	-16%
Children in Subsidized Kinship Legal Guardianship				1,294	0%
Children in Subsidized Adoptions				10,695	-7%
Entries to Care				133	2%
Exits from Care				125	24%

Children in Out-of-Home Placement:  
Annual Entries, Exits and Monthly Point in Time Children in Placement

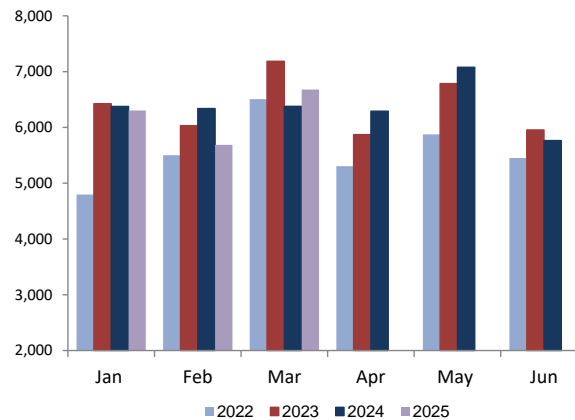


Total SCR Intakes

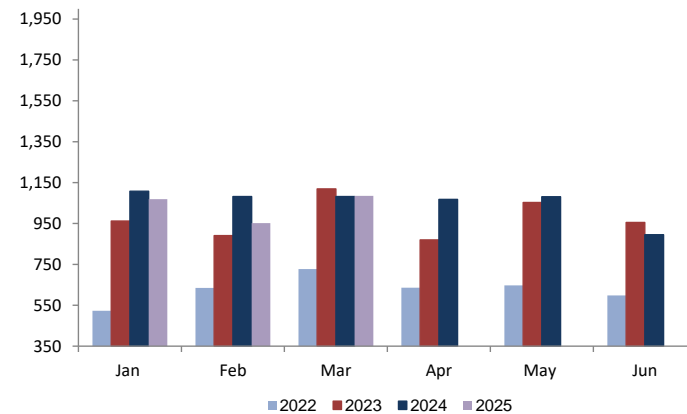
n = 18,861  
March 2025



CPS & CWS Referrals

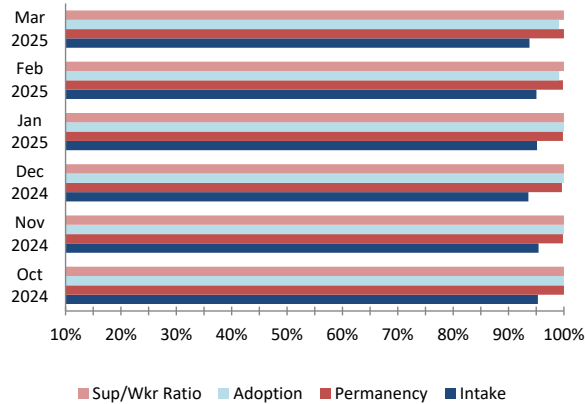


CWS Referrals Assigned to Local Offices

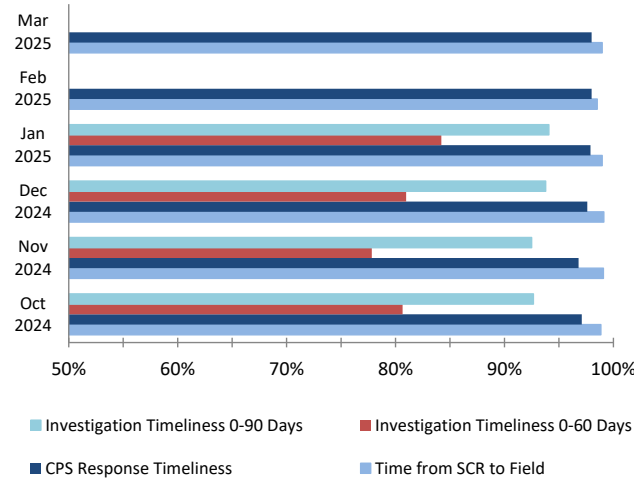


## Section I: Child Protection & Permanency

**Caseload Compliance  
(Individual Worker Level)**



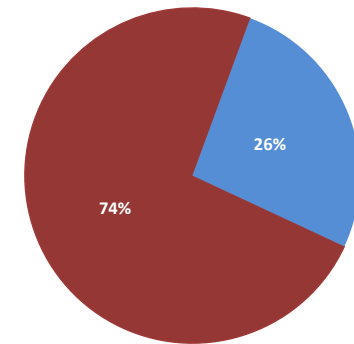
**Response and Investigation Timeliness**



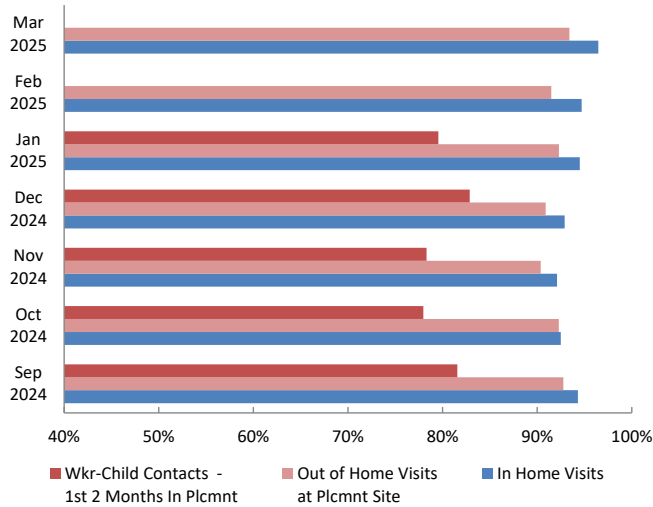
**Referrals to Early Intervention**

Oct 2024 - Mar 2025

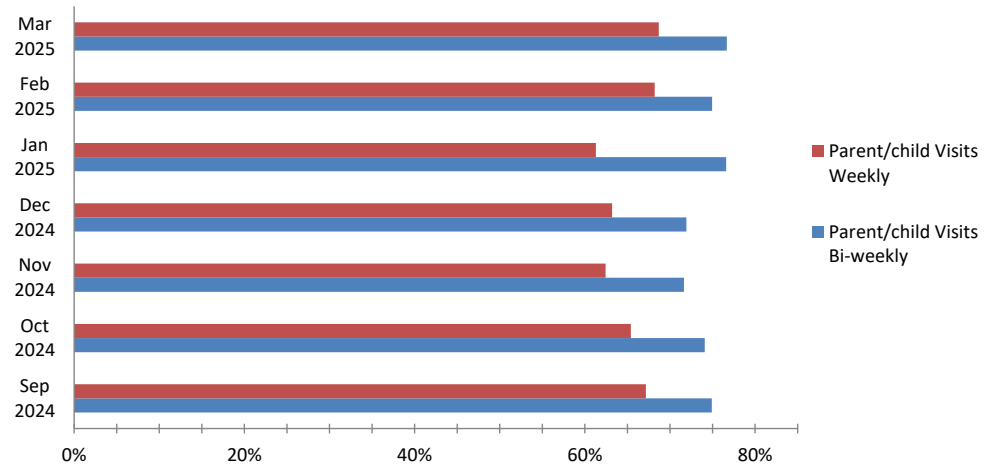
n = 205



**Worker - Child Visits**

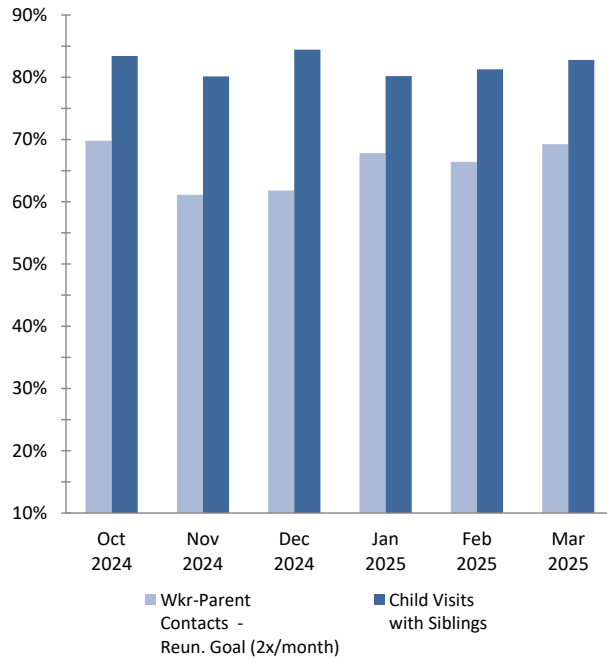


**Parent - Child Visits**

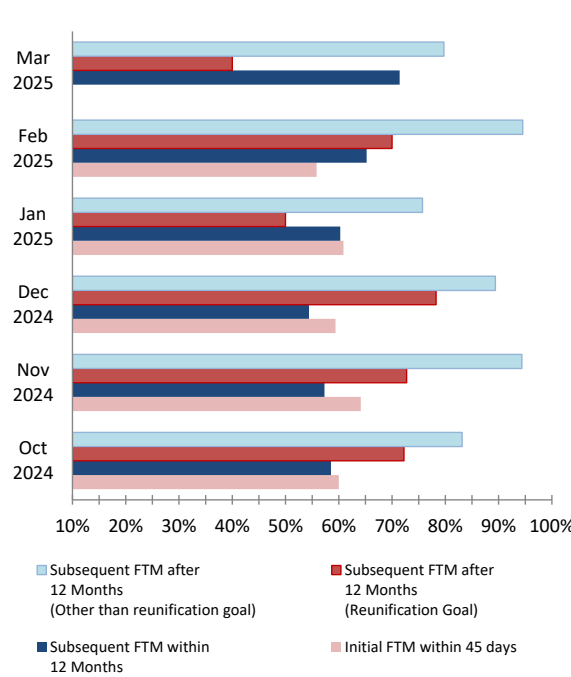


## Section I: Child Protection & Permanency

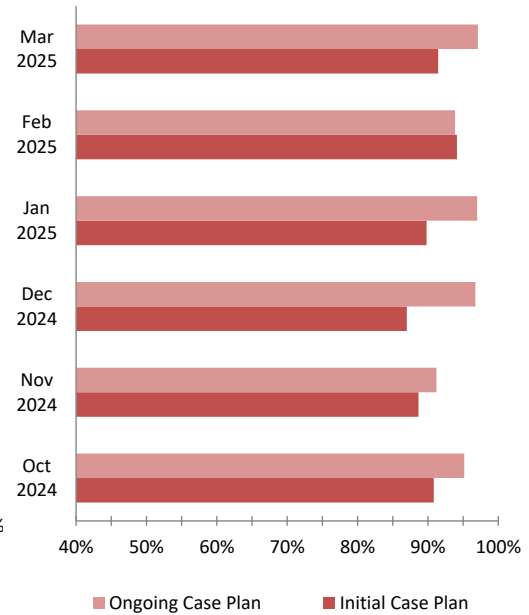
Worker- Parent Visits & Sibling Visits



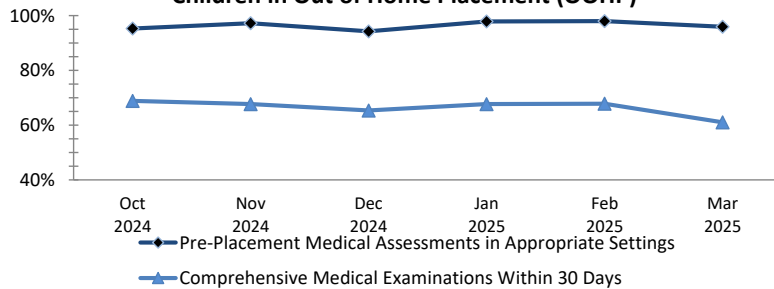
Initial & Subsequent Family Team Meetings



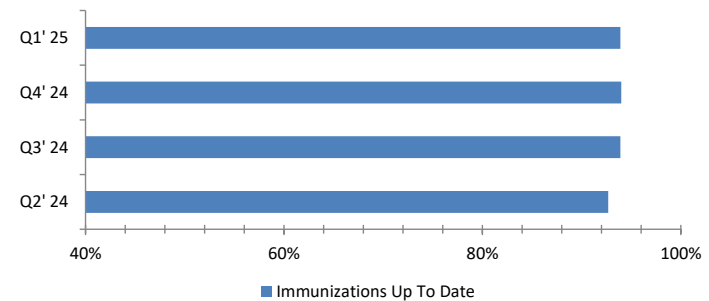
Initial & Ongoing Case Plans



Medical Assessments for  
Children in Out of Home Placement (OOHP)



Immunizations for  
Children in OOHP



## Section II: Adolescent Services

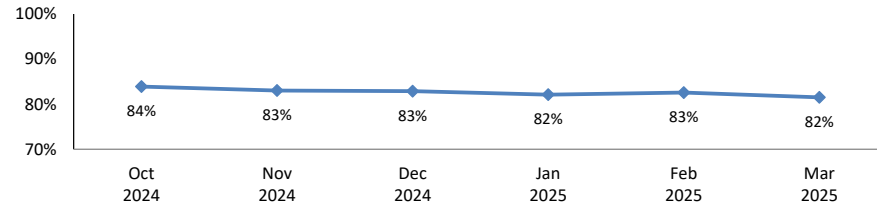
OAS Quick Facts (March 2025)  
Youth 18-23

<b>Youth 18-23 years old served by CP&amp;P<sup>1</sup></b>			<b>1,829</b>
<b>Youth served "In Home" living with a parent/relative or living independently<sup>2</sup></b>			<b>1,614</b>
<b>Youth served "Out-of-Home"</b>			<b>215</b>
Resource Family (non-Kin)	(31.6%)	68	
Resource Family Kinship	(18.1%)	39	
Congregate Care Setting	(30.7%)	66	
Independent Living	(19.5%)	42	
<b>Youth Receiving Adoption or KLG Subsidy</b>			<b>860</b>

<sup>1</sup> The data includes all 18-21 year olds who are active participants in an open CP&P case as of the end of the month.

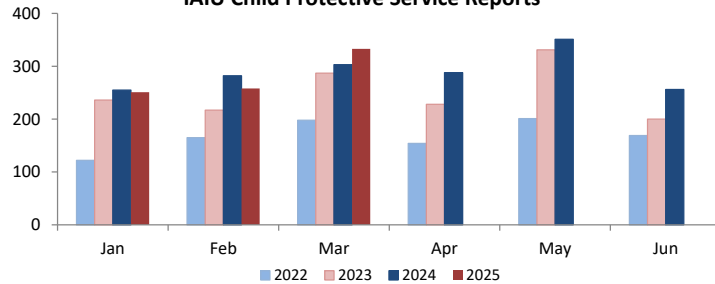
<sup>2</sup> The terms "out-of-home" and "in-home" may not be appropriate for all 18-21 year olds. Youth identified as "in-home" can either be residing with a parent/relative, or living independently. Any of these youth may be receiving services. These definitions are currently being reviewed to better understand how we capture DCF's work with this population. The goal of this ongoing work is to create three meaningful categories for 18-21 year olds 1) Youth in a formal out-of-home placement setting, 2) Youth that achieved permanency, and 3) Youth that never achieved permanency.

Completed Independent Living Assessments  
of Youth Ages 14-18 years

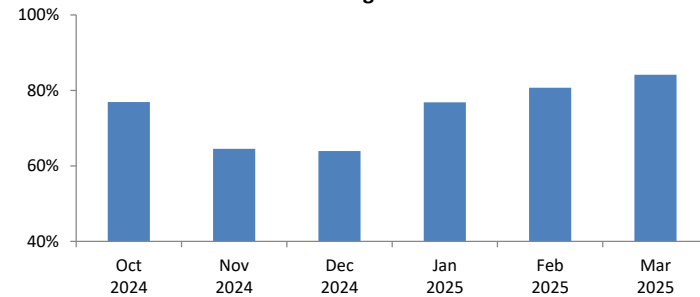


## Section III: Institutional Abuse Investigation Unit

IAIU Child Protective Service Reports

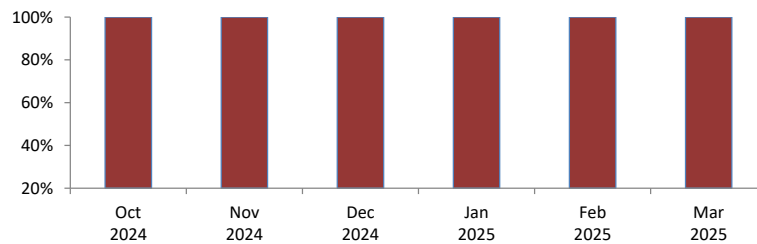


IAIU Investigation Timeliness

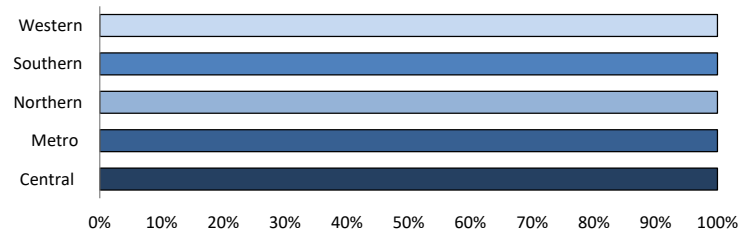


IAIU Caseload Report  
Statewide

No more than 8 new investigations and 12 cases/month



IAIU Caseload Report by Region  
March 2025

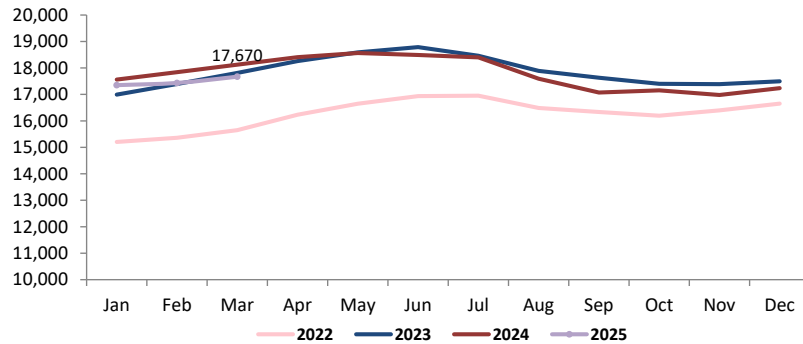




## Section IV: Children's System of Care

**Children in Care Management**

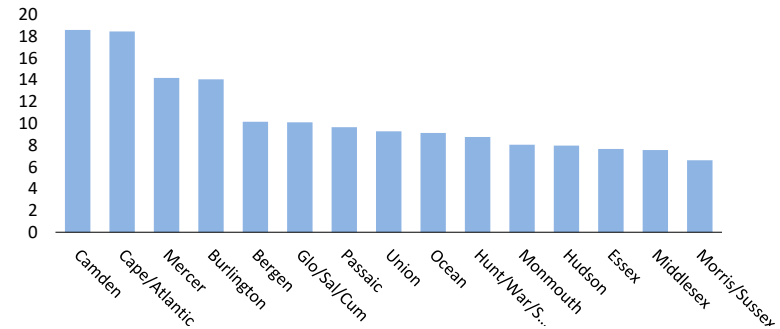
as of March 31<sup>st</sup> 2025



**Rate of Children in Care Management by Service Area**

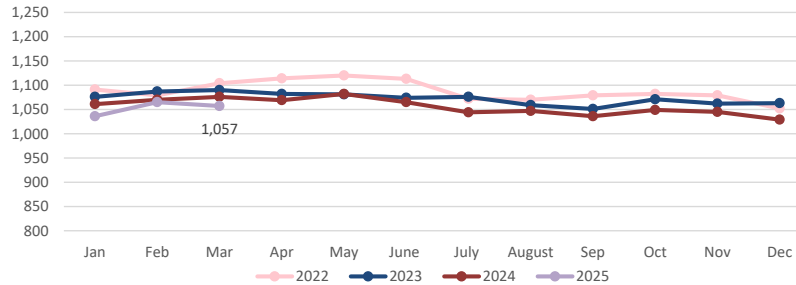
as of March 31<sup>st</sup> 2025

n=17,670



**Children in Out of Home Treatment Settings**

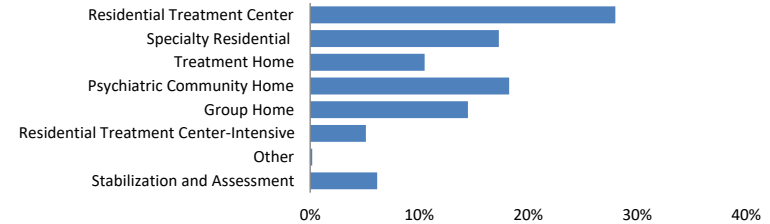
as of March 31<sup>st</sup> 2025



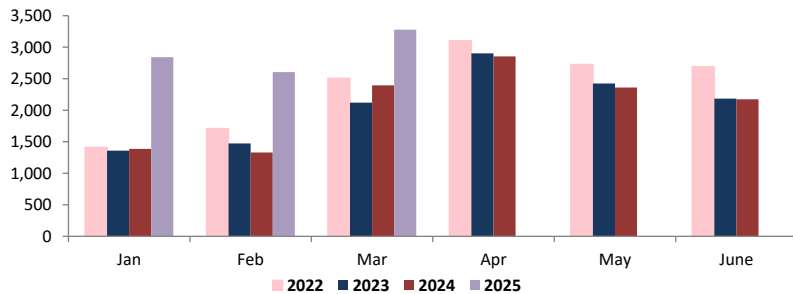
**Children in Out-of-Home Treatment Settings**

as of March 31<sup>st</sup> 2025

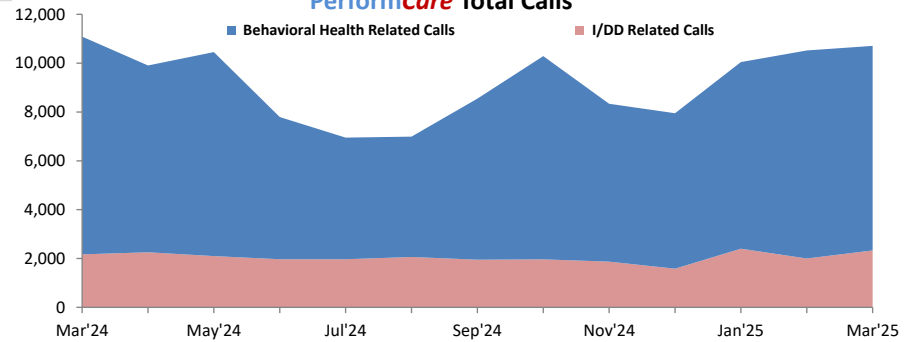
n= 1,057



**Mobile Response Stabilization Services (MRSS) Dispatched**

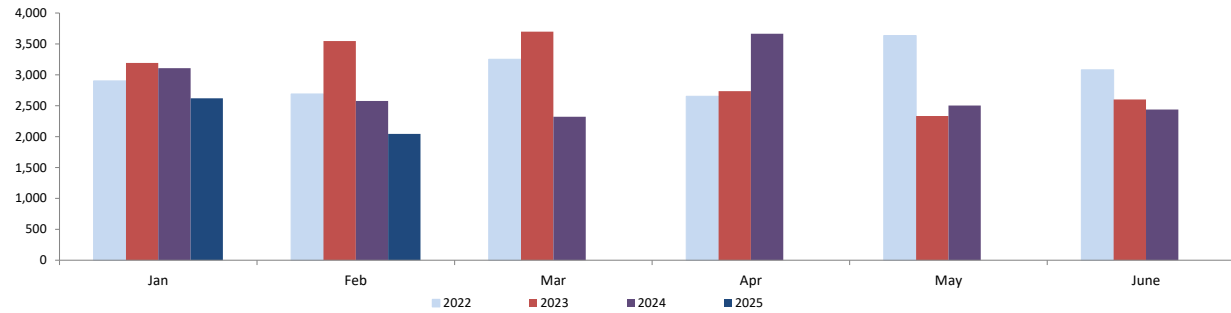


**PerformCare Total Calls**



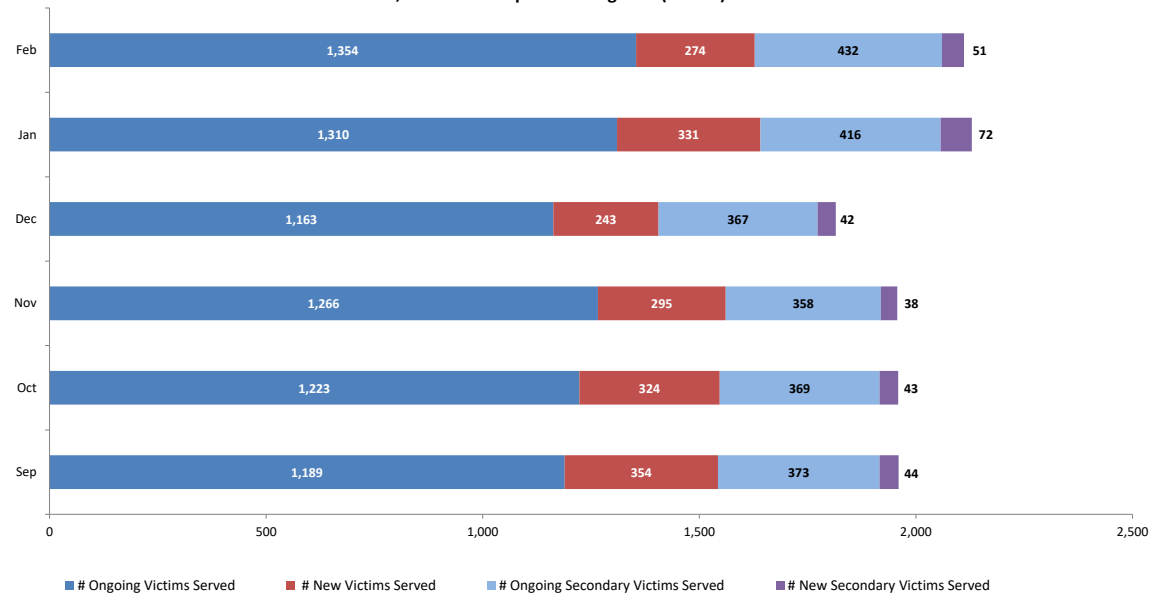
## Section V: Family & Community Partnerships

Family Success Centers - Families Served



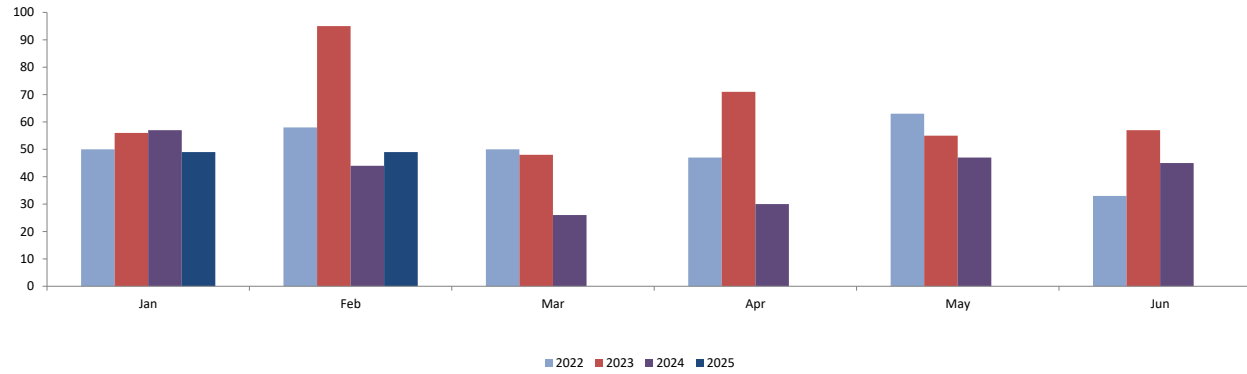
## Section VI: Division on Women

Sexual Assault, Abuse and Rape Care Programs (SAARC)

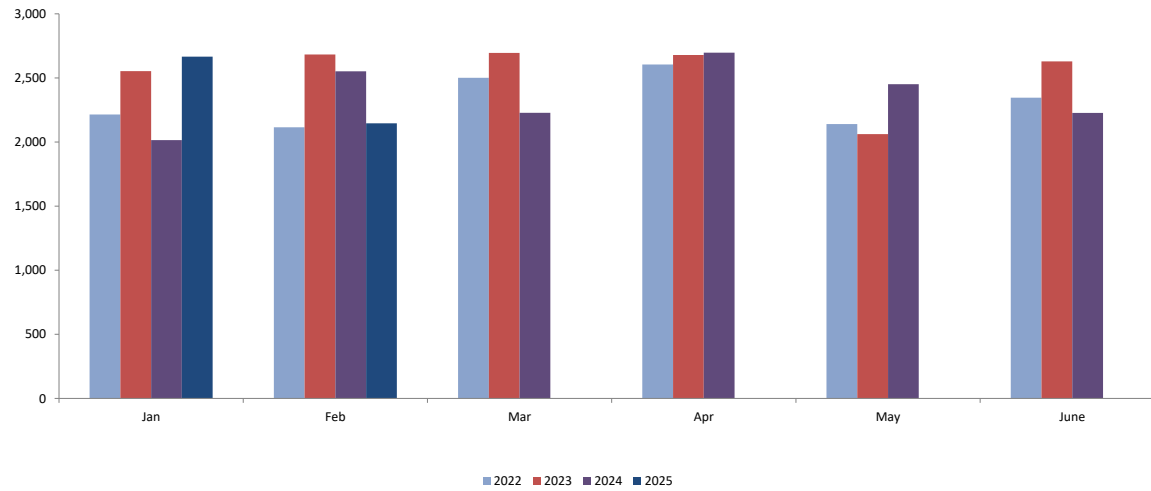


## Section VI: Division on Women

**Residential Domestic Violence Programs:  
Victims' Average Length of Stay (days)**



**Domestic Violence Services - Adults and Children  
Admitted to Residential and Non-Residential Services  
Total New Clients**



## Worker and Office Caseloads by Worker Type and by Local Office - March 2025

	<div><div></div> At or Above Statewide Performance</div>		<div><div></div> Below Statewide Performance</div>			
Local Office	<sup>1</sup> Intake		<sup>2</sup> Permanency		<sup>3</sup> Adoption	
	Worker Compliance	Office Compliant? Yes/No	Worker Compliance	Office Compliant? Yes/No	Worker Compliance	Office Compliant? Yes/No
Atlantic East	100%	Yes	100%	Yes	100%	Yes
Atlantic West	100%	Yes	100%	Yes	100%	Yes
Bergen Central	96%	Yes	100%	Yes	100%	Yes
Bergen South	100%	Yes	100%	Yes	100%	Yes
Burlington East	100%	Yes	100%	Yes	100%	Yes
Burlington West	60%	No	100%	Yes	50%	No
Camden Central	61%	No	100%	Yes	100%	Yes
Camden East	77%	No	100%	Yes	100%	Yes
Camden North	92%	Yes	100%	Yes	100%	Yes
Camden South	95%	Yes	100%	Yes	100%	Yes
Cape May	100%	Yes	100%	Yes	100%	Yes
Cumberland East	100%	Yes	100%	Yes	100%	Yes
Cumberland West	85%	No	100%	Yes	100%	Yes
Essex Central	100%	Yes	100%	Yes	100%	Yes
Essex North	73%	No	100%	Yes	100%	Yes
Essex South	100%	Yes	100%	Yes	100%	Yes
Gloucester East	95%	Yes	100%	Yes	100%	Yes
Gloucester West	96%	Yes	100%	Yes	100%	Yes
Hudson Central	95%	Yes	100%	Yes	100%	Yes
Hudson North	100%	Yes	100%	Yes	100%	Yes
Hudson South	100%	Yes	100%	Yes	100%	Yes
Hudson West	100%	Yes	100%	Yes	100%	Yes
Hunterdon	100%	Yes	100%	Yes	100%	Yes
Mercer North	86%	No	100%	Yes	100%	Yes
Mercer South	100%	Yes	100%	Yes	100%	Yes
Middlesex Central	81%	No	100%	Yes	100%	Yes
Middlesex Coastal	96%	Yes	100%	Yes	100%	Yes
Middlesex West	97%	Yes	100%	Yes	100%	Yes
Monmouth North	100%	Yes	100%	Yes	100%	Yes
Monmouth South	100%	Yes	100%	Yes	100%	Yes
Morris East	100%	Yes	100%	Yes	100%	Yes
Morris West	100%	Yes	100%	Yes	100%	Yes
Newark Center City	95%	Yes	100%	Yes	100%	Yes
Newark Northeast	92%	Yes	100%	Yes	100%	Yes
Newark South	95%	Yes	100%	Yes	100%	Yes
Ocean North	100%	Yes	100%	Yes	100%	Yes
Ocean South	97%	Yes	100%	Yes	100%	Yes
Passaic Central	100%	Yes	100%	Yes	100%	Yes
Passaic North	97%	Yes	100%	Yes	100%	Yes
Salem	71%	No	100%	Yes	100%	Yes
Somerset	80%	No	100%	Yes	100%	Yes
Sussex	100%	Yes	100%	Yes	100%	Yes
Union Central	100%	Yes	100%	Yes	100%	Yes
Union East	100%	Yes	100%	Yes	100%	Yes
Union West	82%	No	100%	Yes	100%	Yes
Warren	100%	Yes	100%	Yes	100%	Yes
Statewide <sup>4</sup>	94%	Yes	100%	Yes	99%	Yes

### 1 Intake

- Intake worker compliance: % of workers with no more than 8 new intakes in the month, no more than 12 Primary families and no more than a total of 14 families.
- Office Compliance: % of offices that meet the caseload standards of no more than 8 new intakes and 12 total families.

### 2 Permanency

- Permanency worker compliance: % of workers who meet the caseload standards of no more than 15 families and 10 children in placement.
- Office Compliance: % of offices that meet the caseload standards of no more than 15 families and 10 children in placement.

### 3 Adoption

- Adoption worker compliance: % of adoption workers who meet the caseload standards of 15 or fewer children.
- Office Compliance: % of offices that meet the caseload standards of 15 or fewer children.
- Offices with blank data do not carry adoption caseloads, however adoption cases in those offices are handled by other offices in that area.

### 4 Statewide

- Performance is based on total workers in compliance for the month, not an average. Percentages are rounded to the whole number.

### CP&P Key Performance Indicators by Local Office - 6 Months View

Local Office	CPS Investigations Completed w/ 60 Days	CPS Investigations Completed w/ 90 Days	Monthly Staff Visits w/ Children in Placement	Visits w/Children in Placement 2x/Month for 2 Months	Visits with Parents of Children in Placement 2x/Month	Weekly Parent/Child Visits-Children with Goal of Reunification	Bi-weekly Parent-Child Visits-Children with Goal of Reunification	Monthly Sibling Visits	Initial Case Plans w/ 30 Days of Placement	6 Months Review of Case Plans for Children in Placement	Initial Family Team Meetings w/ 45 days of Placement	3 Family Team Meetings in the first 12 months of Placement	3 Family Team Meetings after 12 months in Placement	2 Family Team Meeting after 12 months in Placement
Atlantic East	89%	95%	93%	87%	63%	65%	71%	78%	100%	100%	82%	67%	50%	100%
Atlantic West	90%	97%	93%	76%	58%	71%	79%	71%	100%	100%	71%	79%	100%	93%
Bergen Central	91%	97%	97%	100%	91%	90%	93%	98%	60%	100%	100%	100%		
Bergen South	87%	94%	98%	80%	81%	94%	83%	78%	78%	94%	67%	77%		100%
Burlington East	79%	94%	97%	56%	70%	69%	74%	71%	92%	100%	47%	64%	0%	67%
Burlington West	68%	90%	86%	65%	52%	50%	68%	72%	74%	87%	21%	3%	50%	40%
Camden Central	81%	91%	85%	63%	57%	68%	80%	87%	90%	90%	28%	58%	83%	94%
Camden East	63%	85%	90%	77%	72%	69%	76%	80%	100%	90%	26%	80%	50%	96%
Camden North	75%	92%	95%	80%	64%	73%	79%	91%	100%	96%	83%	39%	57%	100%
Camden South	70%	97%	93%	81%	74%	71%	79%	90%	90%	90%	53%	78%	0%	100%
Cape May	88%	94%	93%	90%	64%	55%	62%	81%	80%	100%	90%	67%	100%	100%
Cumberland East	68%	86%	92%	80%	80%	99%	86%	90%	100%	100%	54%	100%		100%
Cumberland West	60%	90%	94%	100%	90%	94%	92%	100%	100%	100%	90%	100%		100%
Essex Central	84%	96%	92%	86%	71%	59%	70%	91%	100%	98%	11%	56%	100%	89%
Essex North	84%	93%	92%	100%	74%	43%	33%	90%	100%	100%	20%	0%		50%
Essex South	82%	92%	94%	67%	34%	41%	51%	81%	100%	93%	56%	27%	0%	11%
Gloucester East	93%	97%	92%	85%	46%	70%	74%	83%	100%	94%	71%	44%	67%	100%
Gloucester West	77%	89%	97%	90%	77%	75%	82%	80%	100%	100%	45%	92%	100%	63%
Hudson Central	71%	89%	97%	88%	78%	78%	83%	52%	100%	90%	75%	67%	40%	78%
Hudson North	83%	96%	100%	100%	93%	89%	76%	90%	100%	100%	67%	100%		100%
Hudson South	83%	94%	95%	89%	71%	61%	75%	86%	86%	96%	0%	50%	0%	83%
Hudson West	89%	96%	93%	90%	81%	44%	76%	85%	67%	93%	57%	0%	100%	71%
Hunterdon	89%	98%	100%	100%	75%	75%	77%	98%	100%	100%	25%	0%		100%
Mercer North	67%	89%	91%	81%	64%	55%	74%	54%	83%	87%	20%	33%	83%	70%
Mercer South	79%	91%	96%	65%	70%	60%	83%	76%	100%	84%	60%	71%	75%	57%
Middlesex Central	68%	89%	90%	75%	59%	73%	78%	72%	100%	100%	75%	86%	0%	0%
Middlesex Coastal	82%	95%	89%	82%	82%	78%	75%	84%	80%	95%	91%	54%		43%
Middlesex West	80%	95%	96%	90%	58%	77%	76%	84%	100%	100%	67%	67%	0%	83%
Monmouth North	98%	99%	96%	94%	75%	89%	87%	94%	96%	98%	78%	40%	100%	73%
Monmouth South	90%	98%	96%	93%	75%	74%	80%	88%	89%	100%	73%	100%	100%	100%
Morris East	75%	95%	94%	100%	92%	94%	89%	93%	100%	100%	100%	100%		100%
Morris West	86%	97%	93%	100%	94%	100%	86%	93%	100%	100%	100%	100%		100%
Newark Center City	83%	95%	91%	80%	91%	46%	65%	93%	100%	100%	43%	89%	100%	71%
Newark Northeast	76%	84%	77%	53%	27%	46%	58%	78%	100%	100%	0%	9%	0%	79%
Newark South	92%	96%	99%	83%	89%	68%	70%	77%	100%	100%	67%	43%	75%	100%
Ocean North	92%	98%	99%	73%	78%	72%	82%	91%	100%	95%	50%	67%	50%	100%
Ocean South	95%	98%	96%	83%	61%	76%	85%	93%	93%	92%	83%	92%	100%	100%
Passaic Central	89%	97%	96%	100%	85%	99%	87%	94%	100%	100%	100%	100%	100%	100%
Passaic North	92%	96%	95%	98%	92%	100%	85%	92%	100%	100%	100%	100%	100%	100%
Salem	54%	83%	96%	100%	86%	74%	85%	88%	100%	100%	100%	100%		100%
Somerset	75%	90%	92%	60%	60%	87%	88%	95%	100%	100%	67%	18%	0%	75%
Sussex	94%	99%	93%	100%	90%	100%	88%	96%	100%	100%	100%	100%		100%
Union Central	72%	90%	96%	86%	38%	69%	85%	100%	100%	100%	100%		0%	100%
Union East	92%	98%	100%	100%	84%	100%	83%	90%	100%	100%	100%	75%	100%	80%
Union West	77%	95%	90%	67%	49%	55%	56%	79%	100%	98%	88%	80%		89%
Warren	59%	81%	82%	63%	53%	63%	70%	81%	100%	85%	39%	71%		60%
Statewide	82%	94%	93%	82%	67%	69%	76%	83%	94%	96%	60%	61%	62%	86%

Blank cells mean that the office did not have any children eligible for that measure during that period.

These data points are preliminary and subject to change based on user data entry.

Description of the Measure	Time Period Analyzed
CPS Investigations Completed w/ 60 Days	August 24 - January 25
CPS Investigations Completed w/ 90 Days	August 24 - January 25
Monthly Staff Visits w/Children in Placement	October 24 - March 25
Visits w/Children in Placement 2x/Month for 2 Months	August 24 - January 25
Visits with Parents of Children in Placement 2x/Month	October 24 - March 25
Weekly Parent/Child Visits-Children with Goal of Reunification	02/22/2025 - 03/29/2025
Bi-weekly Parent-Child Visits-Children with Goal of Reunification	Octoberr 24 - March 25
Monthly Sibling Visits	October 24 - March 25
Initial Case Plans w/ 30 Days of Placement	October 24 - March 25
6 Months Review of Case Plans for Children in Placement	October 24 - March 25
Initial Family Team Meetings w/ 45 days of Placement	October 24 - March 25
3 Family Team Meetings in the first 12 months of Placement	September 24 - February 25
3 Family Team Meetings after 12 months in Placement	October 24 - March 25
2 Family Team Meeting after 12 months in Placement	October 24 - March 25